

## SPEED READ

- Loads on wheels fell overnight, reflecting a decline in both CN and CP volumes. On a net basis, volumes fell due to lower volumes across all corridors other than Vancouver.
- Network fluidity deteriorated overnight, led by an increase in idle car counts on both CN and CP by 61% (+236) and 8% (+51), respectively. The total count of cars for 4+ days on both railways rose significantly by 65% (+298) overnight and have now increased for the fourth consecutive day - now at 760 cars.
- Two days in Week 53 unloads now ahead of prior week's performance by 1,000 unloads, marking improved week over week performance at Thunder Bay and Vancouver offset by lower unloads at Prince Rupert.

## Loads on Wheels

- Loads on wheels fell 2% (-181) overnight, due to lower traffic on both CN and CP - combined total at 7,140 and 8% below the trailing 30-day average.
- On a net basis, the decline in loads on wheels reflects lower volumes across all corridors other than Vancouver.
- CN volumes fell 3% (-92) overnight, with reduced volumes across all corridors other than Vancouver. System wide CN loads on wheels now at 3,408 and 16% below the trailing 30-day average.
- CP volumes fell 3% (-109) overnight, driven by a decline in volumes across all corridors other than Thunder Bay. CP system wide loads on wheels now at 3,596 and in line with the trailing 30-day average.
- Vancouver now at 4,809, increased 2% (+110) overnight, now 7% above the trailing 30-day average.
- The Prince Rupert pipeline now at 348, the lowest seen in the last 30 days, fell for the fifth consecutive day, down 36% (-193) overnight, and 68% below the trailing 30-day average.
- Thunder Bay volumes fell slightly by 1% (-9) overnight - now at 1,234 and 10% below the trailing 30-day average, with 79% of traffic moving on CP.

## Hopper Car Rationing

- No hopper cars were rationed by either CN or CP in week 51.

## Loads Not Moving

- **The count of cars not moving for 48+ hours rose 27% (+287) overnight, reflecting higher counts on both CN and CP. Idle car counts now at 1,354 and 15% above the trailing 30-day average.**
- CN
  - **The count of idle cars for 48+ hours increased significantly by 61% (+236) overnight - now at 624 cars.**
  - The number of cars idle for 4+ days increased for the third consecutive day, up 34% (+82) overnight - now at 321 cars.
  - The count of cars not moving for 7+ days increased significantly by 217% (+52) overnight - now at 76 cars.
  - Vancouver represents 82% of all idle cars.
  - In total 41% of all idle cars are dwelling at origin locations.
- CP
  - **CP idle car counts for 48+ hours rose for the fourth consecutive day, up 8% (+51) overnight - now at 730 cars.**
  - The number of cars idle for 4+ days increased significantly by 97% (+216) overnight - now at 439 cars.
  - The number of cars idle for 7+ days increased 28% (+29) overnight - now at 132 cars.
  - Vancouver accounts for 71% of all idle cars.

- In total 15% of all idle cars are dwelling at origin locations.

### **Port Performance**

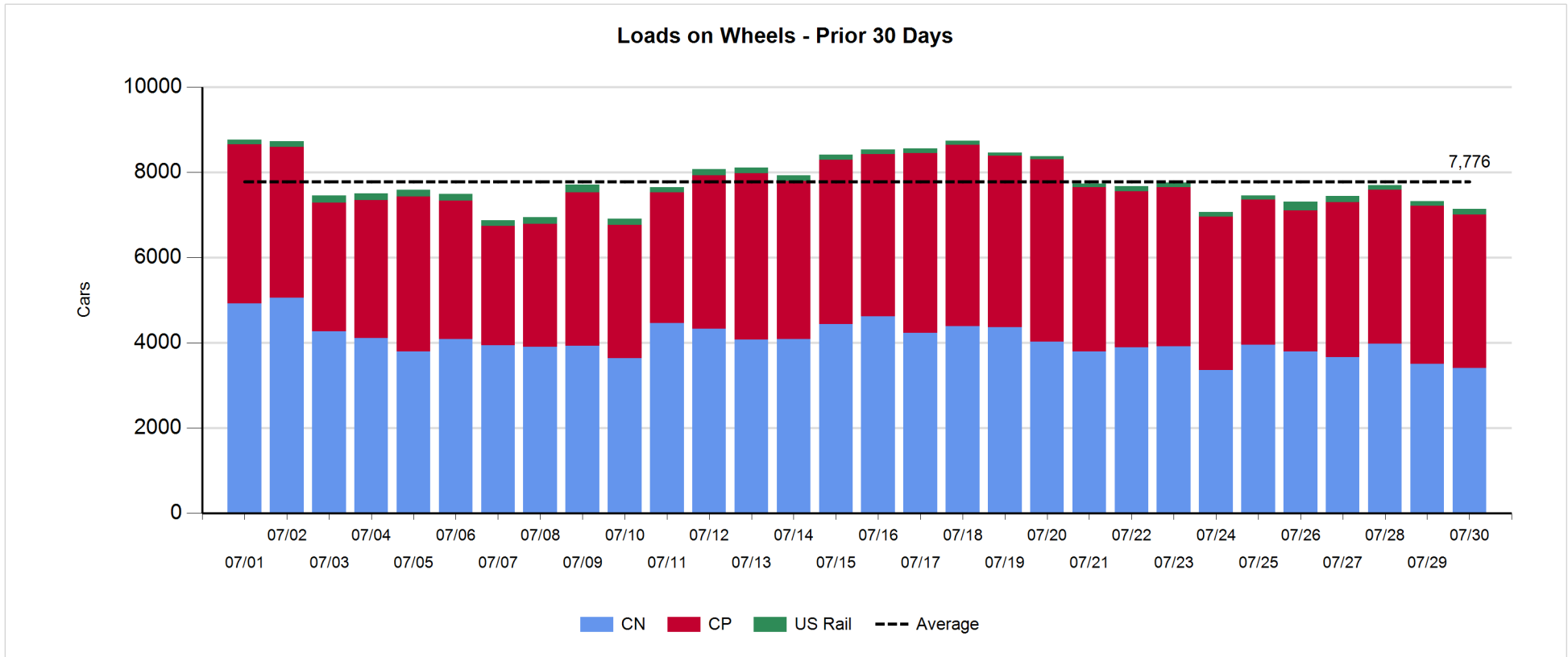
- CN and CP reported a total of 1,925 cars unloaded at the three major ports, the highest seen in the last 30 days, now 94% above the trailing 30-day average. Two days in Week 53 unloads now ahead of last week's pace by 1,000 unloads, marking higher unloads at Thunder Bay and Vancouver offset by lower unloads at Prince Rupert.
- Vancouver
  - 786 unloads reported by CN and CP at the Port of Vancouver; CN - 304 and CP - 482. Two days in Week 53 unloads are tracking ahead of last week's performance by more than 450 unloads.
  - There are more than 1,400 cars on site at Vancouver with 400 cars arriving at the port in the last 24 hours.
  - CN and CP have 600 cars in British Columbia en route to Vancouver, with 450 cars at Kamloops and west, and 63% of traffic moving on CP.
- Prince Rupert
  - Prince Rupert reported 197 unloads, now behind last week's unloads after two days by 100 unloads.
  - Loads on wheels now below 1,000 cars - now at 348 cars.
  - There are 50 cars west of Jasper en route to Prince Rupert.
  - There are more than 250 cars on site at Prince Rupert with around 450 cars arriving at the port in the last 24 hours.
- Thunder Bay
  - 942 unloads, the highest seen in the last 30 days, were reported at Thunder Bay yesterday. Two days in Week 53 unloads are tracking ahead of last week's pace by around 650 unloads.
  - There are more than 350 cars on site at Thunder Bay with 100 cars arriving at the port in the prior 24 hours.
  - There are 450 cars en route to Thunder Bay from Winnipeg and east.

**Daily Loads on Wheels - 7/30/2019**

	E Canada	Prince Rupert	Thunder Bay	USA/MEX	Vancouver	Total
CN	478	348	262	117	2,203	3,408
CP	61		972	5	2,558	3,596
Short Line	21				48	69
US Rail				67		67
	560	348	1,234	189	4,809	7,140

**Change in Loads on Wheels - Prior 24 Hours**

	E Canada	Prince Rupert	Thunder Bay	USA/MEX	Vancouver	Total
CN	-75	-193	-20	-9	205	-92
CP	-12		11	-2	-106	-109
Short Line	-1				11	10
US Rail				10		10
	-88	-193	-9	-1	110	-181

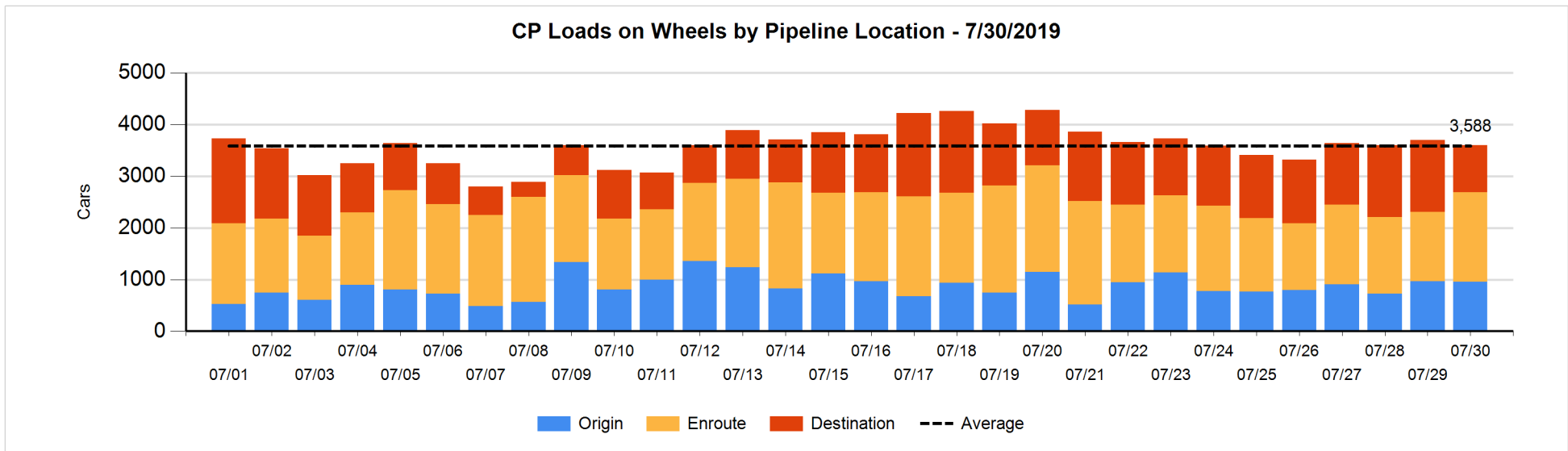
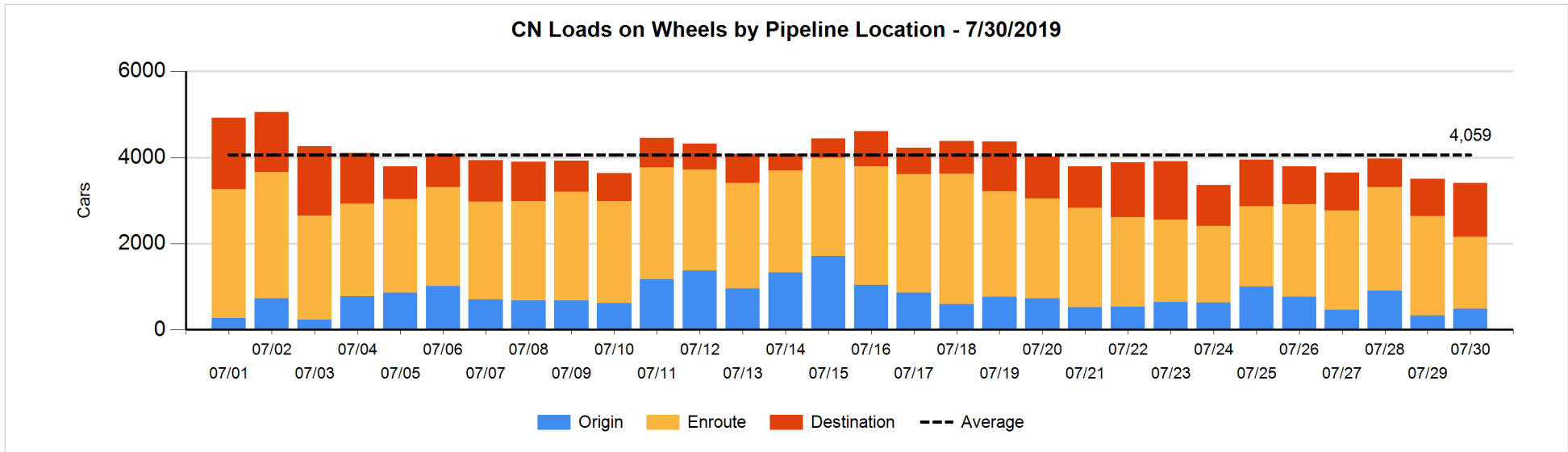


**Daily Loads on Wheels By Pipeline Location - 7/30/2019**

	E Canada	Prince Rupert	Thunder Bay	USA/MEX	Vancouver	Total
CN						
Origin	1	4		5	477	487
Enroute	358	79	2	92	1,140	1,671
Destination	119	265	260	20	586	1,250
	478	348	262	117	2,203	3,408
CP						
Origin	7		126	1	821	955
Enroute	50		733	4	943	1,730
Destination	4		113		794	911
	61		972	5	2,558	3,596
US Rail / Short Line						
Origin						
Enroute				49		49
Destination	21			18	48	87
	21			67	48	136

**Change in Daily Loads on Wheels By Pipeline Location - Prior 24 Hours**

	E Canada	Prince Rupert	Thunder Bay	USA/MEX	Vancouver	Total
CN						
Origin	0	4		-7	161	158
Enroute	-88	-439	-100	-7	-3	-637
Destination	13	242	80	5	47	387
	-75	-193	-20	-9	205	-92
CP						
Origin	-10		-114	-2	119	-7
Enroute	-2		279	0	102	379
Destination	0		-154		-327	-481
	-12		11	-2	-106	-109
US Rail / Short Line						
Origin						
Enroute				9		9
Destination	-1			1	11	11
	-1			10	11	20

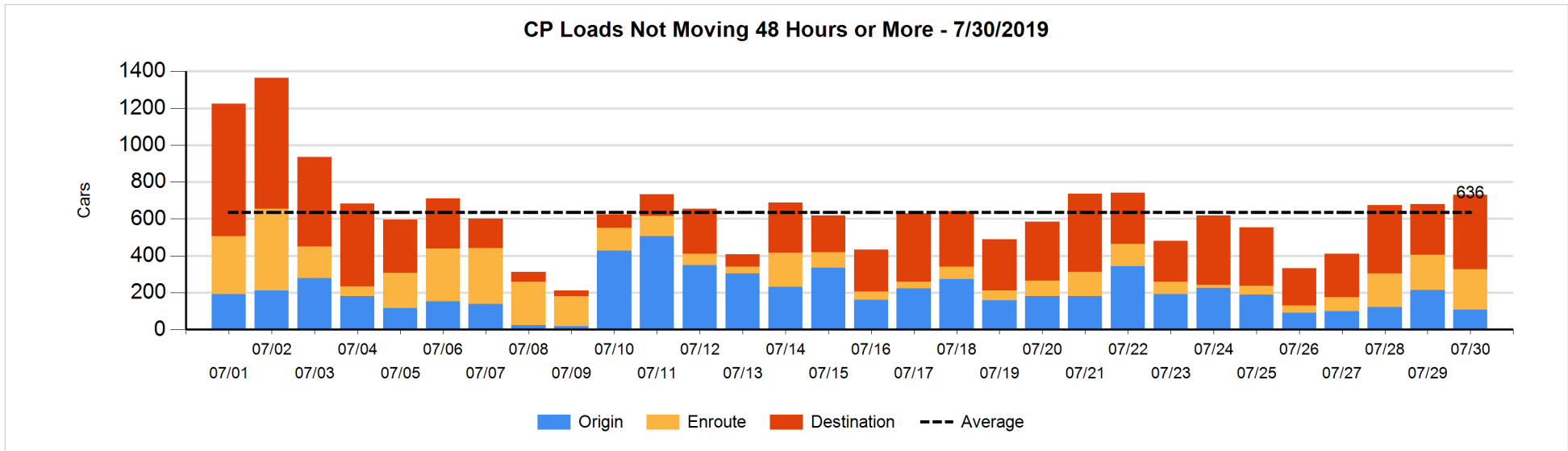
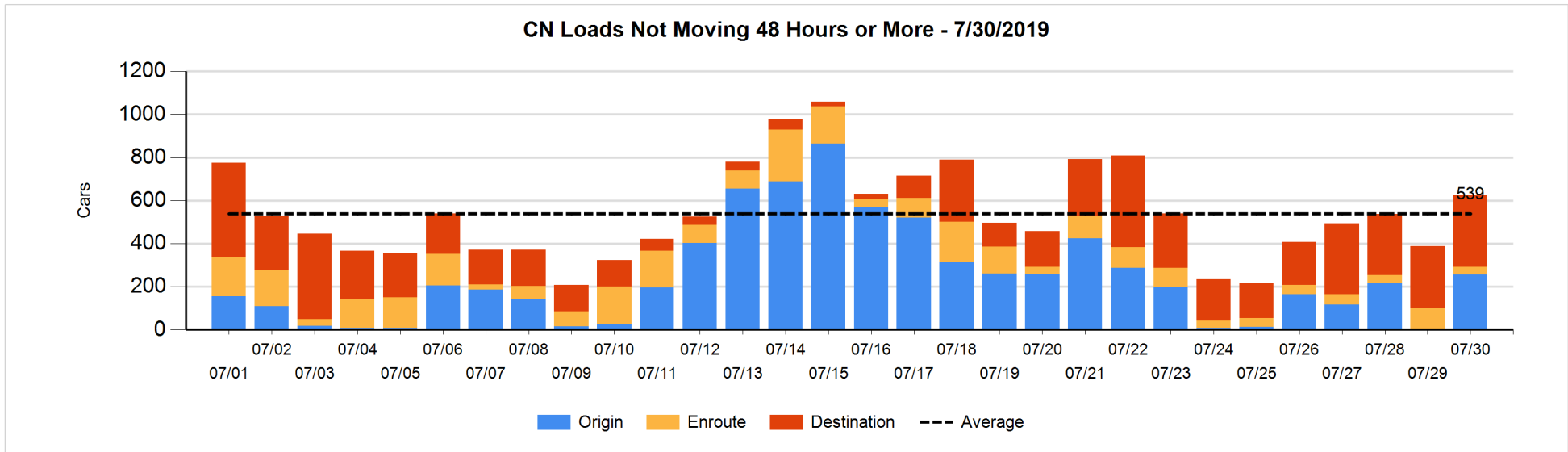


**Loads Not Moving 48 Hours or More - 7/30/2019**

	E Canada	Prince Rupert	Thunder Bay	USA/MEX	Vancouver	Total
CN						
Origin					255	255
Enroute	16	12		1	7	36
Destination	15	7	58	6	247	333
	31	19	58	7	509	624
CP						
Origin	1		74	1	32	108
Enroute	14		38	1	166	219
Destination	4		78		321	403
	19		190	2	519	730
US Rail / Short Line						
Origin						
Enroute				14		14
Destination	6			3	33	42
	6			17	33	56

**Change in Loads Not Moving 48 Hours or More - 7/30/2019**

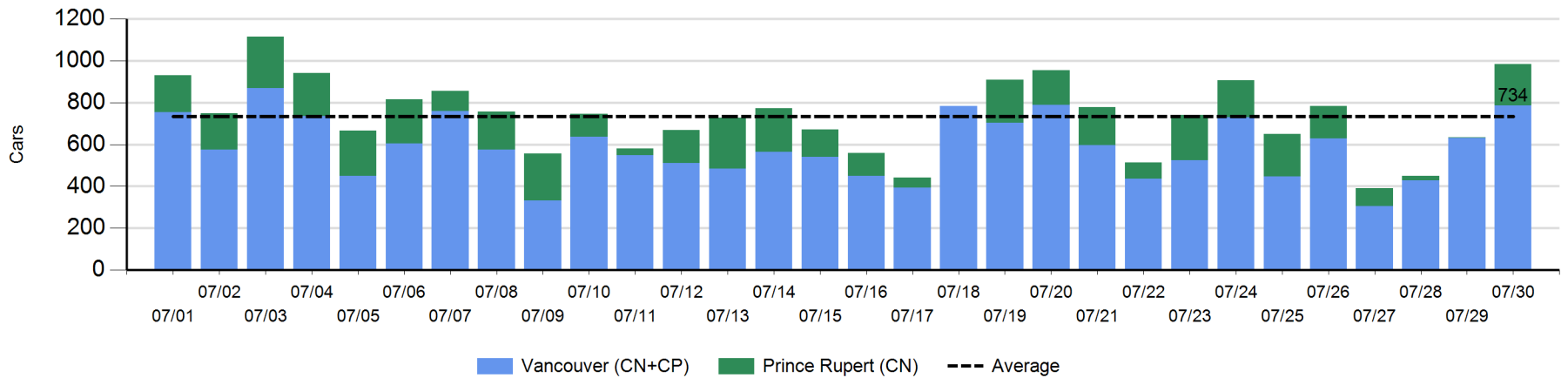
	E Canada	Prince Rupert	Thunder Bay	USA/MEX	Vancouver	Total
CN						
Origin					255	255
Enroute	-18	-49	-1	-2	5	-65
Destination	7	0	28	-3	14	46
	-11	-49	27	-5	274	236
CP						
Origin	0		0	0	-105	-105
Enroute	-12		28	0	12	28
Destination	0		-19		147	128
	-12		9	0	54	51
US Rail / Short Line						
Origin						
Enroute				-2		-2
Destination	-1			-4	-1	-6
	-1			-6	-1	-8



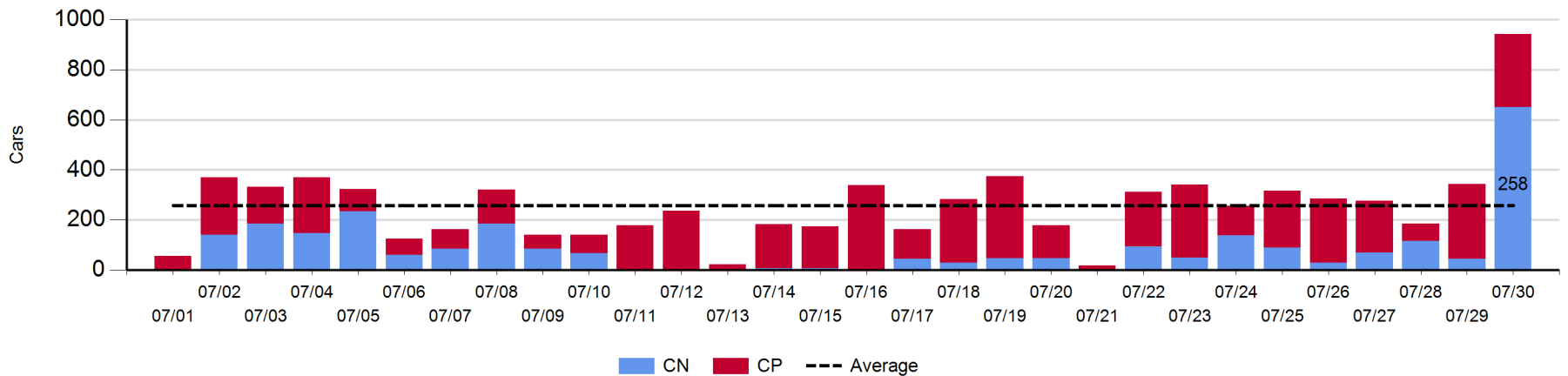
Port Unloads - 7/30/2019

	Prince Rupert	Vancouver	West Coast Total	Thunder Bay	Total
CN	197	304	501	650	1,151
CP		482	482	292	774
	197	786	983	942	1,925

West Coast Port Unloads - Prior 30 Days



Thunder Bay Port Unloads - Prior 30 Days





**Port Terminal Status**

**Vancouver**

Daily Activity for 7/30/2019

	Cars Arrived	Cars Received in Interchange	Cars Delivered in Interchange	Cars Placed for Unloading	Loads on Wheels at Destination As of 7/30/2019
CN	101	129	121	156	586
CP	302	119	137	376	794
SRY		10		4	48

**Port Unloads**

	07/30	07/29	Week To Date	Last Week
CN	304	153	457	1,272
CP	482	477	959	2,223
SRY	7	18	25	58

**Age Profile of Loaded Cars Waiting Placement for Unloading**

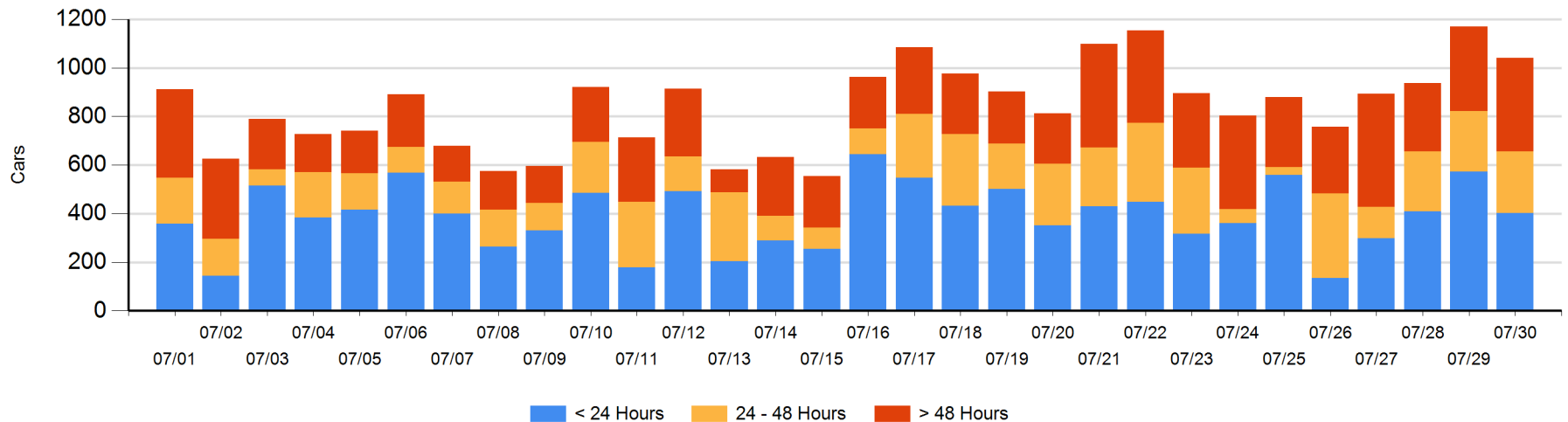
**Today**

	< 24 Hrs	24 - 48 Hrs	> 48-72 Hrs	> 72 Hrs	Total On Hand
CN	101	20	108	70	299
CP	301	235	33	173	742
SRY					0

**Change in Last 24 Hours**

	< 24 Hrs	24-48 Hrs	48 - 72 Hrs	> 72 Hrs
CN	-115	-155	64	38
CP	-56	161	-109	43
SRY				

**Loaded Cars on Hand Vancouver Waiting for Placement - Last 30 Days All Railways**



**Port Terminal Status**

**Prince Rupert**

Daily Activity for 7/30/2019

	Cars Arrived	Cars Received in Interchange	Cars Delivered in Interchange	Cars Placed for Unloading	Loads on Wheels at Destination As of 7/30/2019
CN	439			439	265

**Port Unloads**

	07/30	07/29	Week To Date	Last Week
CN	197	3	200	939

**Age Profile of Loaded Cars Waiting Placement for Unloading**

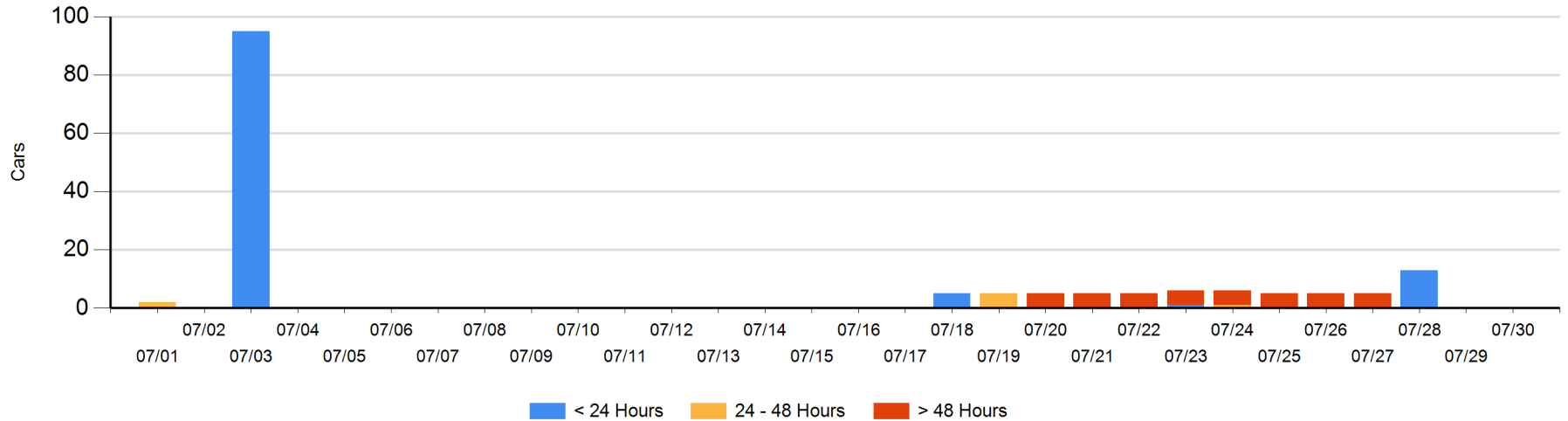
**Today**

	< 24 Hrs	24 - 48 Hrs	> 48-72 Hrs	> 72 Hrs	Total On Hand
CN					0

**Change in Last 24 Hours**

	< 24 Hrs	24-48 Hrs	48 - 72 Hrs	> 72 Hrs
CN				

Loaded Cars on Hand Prince Rupert Waiting for Placement - Last 30 Days All Railways



**Port Terminal Status**

**Thunder Bay**

Daily Activity for 7/30/2019

	Cars Arrived	Cars Received in Interchange	Cars Delivered in Interchange	Cars Placed for Unloading	Loads on Wheels at Destination As of 7/30/2019
CN	100			97	260
CP				103	113

**Port Unloads**

	07/30	07/29	Week To Date	Last Week
CN	650	45	695	587
CP	292	299	591	1,383

**Age Profile of Loaded Cars Waiting Placement for Unloading**

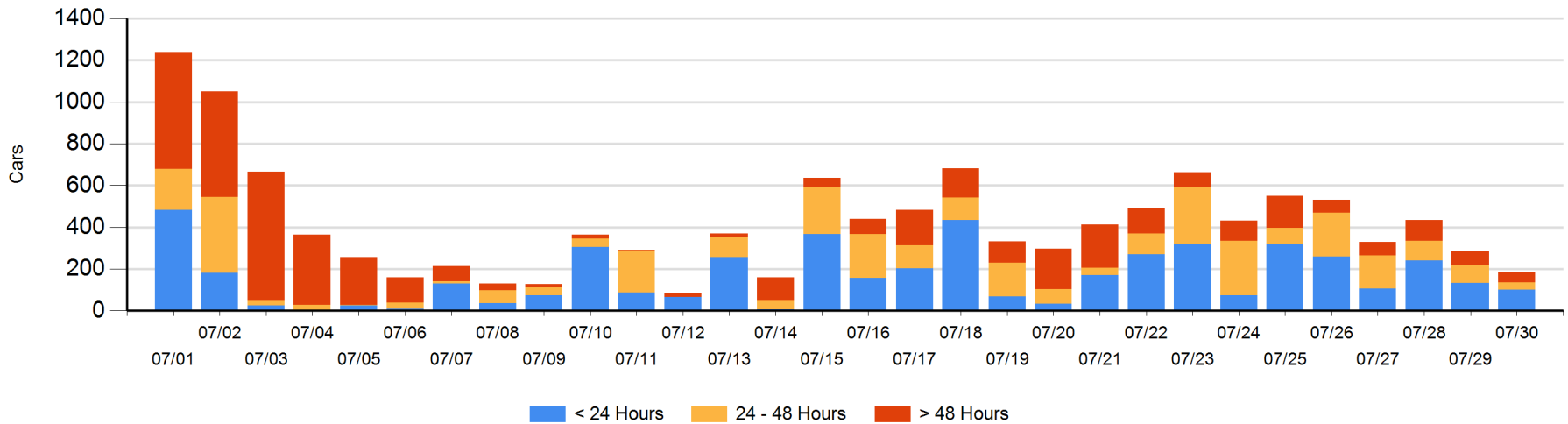
**Today**

	< 24 Hrs	24 - 48 Hrs	> 48-72 Hrs	> 72 Hrs	Total On Hand
CN	100			6	106
CP		35	40	2	77

**Change in Last 24 Hours**

	< 24 Hrs	24-48 Hrs	48 - 72 Hrs	> 72 Hrs
CN	3		-5	5
CP	-35	-50	0	-18

Loaded Cars on Hand Thunder Bay Waiting for Placement - Last 30 Days All Railways



## Measurement Definitions

Loads on Wheels	<p>Count of loaded rail cars including all rail cars that have been released loaded at origin and have not been reported by the railway as unloaded at destination.</p> <p>Counts include all rail cars (hopper cars and boxcars) moving within a pipeline.</p>
Loads Not Moving	<p>Loaded rail cars for which the railways have not reported a movement event for 48 hours or more whether the rail car is at origin, enroute or at destination.</p>
Port Unloads	<p>Count of rail cars reported by railways as unloaded at the western port destinations of Vancouver, Prince Rupert and Thunder Bay.</p> <p>Unload counts include all rail cars (hopper cars and boxcars) unloaded by all receivers including major port terminals, transloaders and other receivers.</p>
Cars Arrived	<p>Count of rail cars reported as arrived at the destination railway terminal.</p>
Cars Received in Interchange	<p>Count of rail cars received in interchange by each railway within a destination railway terminal. Interchange activity is tracked for the Vancouver and Thunder Bay pipelines as applicable.</p>
Cars Delivered in Interchange	<p>Count of rail cars delivered in interchange by each railway within a destination railway terminal. Interchange activity is tracked for the Vancouver and Thunder Bay pipelines as applicable.</p>
Cars Placed for Unloading	<p>Count of rail cars reported by the railways as placed loaded at the receiver's facility for unloading.</p>
Loads on Wheels at Destination	<p>Count of rail cars that remain under load within the destination railway terminal including rail cars that have been reported as placed for unloading but not yet reported as unloaded.</p>
Waiting Placement for Unloading	<p>Count of rail cars that have been reported as arrived at the destination railway terminal but not reported as placed for unloading by the railway.</p> <p>For the Ports of Vancouver, Prince Rupert and Thunder Bay the count of rail cars waiting placement for unloading is categorized by age – i.e. the elapsed time from arrival at destination to the current report date.</p>