

## SPEED READ

- Loads on wheels declined slightly overnight, reflecting a decline in CN volumes offset by higher CP volumes. On a net basis, volumes declined due to reduced volumes in the Prince Rupert, E. Canada and Vancouver corridors offset by higher traffic in the USA/MEX and Thunder Bay corridors.
- Network fluidity deteriorated overnight, led by an increase in idle car counts on CP by 9% (+73) offset by a decline in idle car counts on CN by 10% (-63). The total count of cars for 4+ days on both railways increased for the fifth consecutive day, up 6% (+46) overnight - presently at 806 cars.
- Three days in Week 53 unloads now ahead of prior week's performance by 850 unloads, reflecting improved week over week performance at Thunder Bay and Vancouver offset by reduced unloads at Prince Rupert.

=====

## Loads on Wheels

- Loads on wheels declined slightly by 1% (-82) overnight and have now decreased for the third consecutive day, due to lower volumes on CN offset by higher volumes on CP - combined total at 7,110 and 8% below the trailing 30-day average.
- On a net basis, the decline in loads on wheels reflects reduced volumes in the Prince Rupert, E. Canada and Vancouver corridors offset by higher traffic in the USA/MEX and Thunder Bay corridors.
- CN volumes declined 5% (-162) overnight and have now decreased for the third consecutive day, with lower volumes in the Prince Rupert, E. Canada and Thunder Bay corridors offset by higher traffic in the Vancouver and USA/MEX corridors. System wide CN loads on wheels now at 3,246, the lowest seen in the last 30 days, and 19% below the trailing 30-day average.
- CP volumes rose 2% (+76) overnight, driven by an increase in volumes across all corridors other than Vancouver. CP system wide loads on wheels presently at 3,724 and 4% above the trailing 30-day average.
- Vancouver presently at 4,802, declined slightly by 1% (-59) overnight, now 6% above the trailing 30-day average.
- The Prince Rupert pipeline presently at 172, the lowest seen in the last 30 days, declined significantly by 51% (-176) overnight and have now decreased for the sixth consecutive day, and 84% below the trailing 30-day average.
- Thunder Bay volumes rose 7% (+90) overnight - presently at 1,324 and 3% below the trailing 30-day average, with 81% of traffic moving on CP.

## Hopper Car Rationing

- No hopper cars were rationed by either CN or CP in week 51.

## Loads Not Moving

- **The count of cars not moving for 48+ hours increased marginally by 1% (+10) overnight, reflecting higher counts on CP offset by reduced counts on CN. Idle car counts presently at 1,420 and 23% above the trailing 30-day average.**
- CN
  - **The count of idle cars for 48+ hours fell 10% (-63) overnight - presently at 561 cars.**
  - The number of cars idle for 4+ days rose slightly by (+1) overnight and have now increased for the fourth consecutive day - now at 322 cars.
  - The count of cars not moving for 7+ days rose significantly by 133% (+101) overnight - presently at 177 cars.
  - Vancouver represents 83% of all idle cars.
  - In total 18% of all idle cars are dwelling at origin locations.
- CP
  - **CP idle car counts for 48+ hours rose 9% (+73) overnight and have now increased for the fifth consecutive day - presently at 859 cars.**

- The number of cars idle for 4+ days increased for the third consecutive day, up 10% (+45) overnight - presently at 484 cars.
- The number of cars idle for 7+ days declined 4% (-5) overnight - presently at 127 cars.
- Vancouver accounts for 77% of all idle cars.
- In total 43% of all idle cars are dwelling at origin locations.

### **Port Performance**

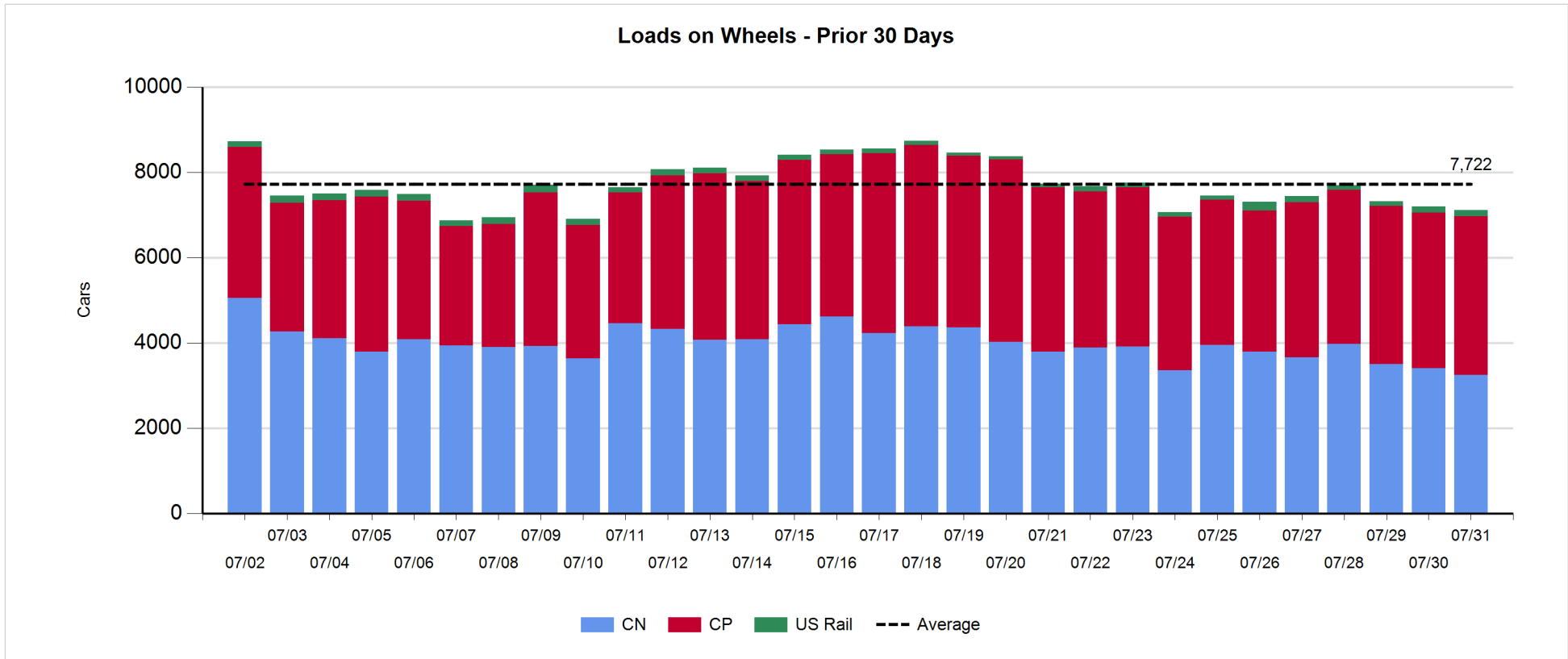
- CN and CP reported a total of 1,008 cars unloaded at the three major ports, now 2% above the trailing 30-day average. Three days in Week 53 unloads now ahead of last week's pace by 850 unloads, reflecting higher unloads at Thunder Bay and Vancouver offset by reduced unloads at Prince Rupert.
- Vancouver
  - 604 unloads reported by CN and CP at the Port of Vancouver; CN - 143 and CP - 461. Three days in Week 53 unloads are tracking ahead of last week's performance by 350 unloads.
  - There are more than 1,150 cars on site at Vancouver with fewer than 350 cars arriving at the port in the last 24 hours.
  - CN and CP have more than 900 cars in British Columbia en route to Vancouver, with 250 cars at Kamloops and west, and 63% of traffic moving on CP.
- Prince Rupert
  - Prince Rupert reported 192 unloads, now behind last week's unloads after three days by more than 50 unloads.
  - Loads on wheels now below 1,000 cars - now at 172 cars.
  - There are 50 cars west of Jasper en route to Prince Rupert.
  - There are more than 50 cars on site at Prince Rupert with 1 cars arriving at the port in the last 24 hours.
- Thunder Bay
  - 212 unloads were reported at Thunder Bay yesterday. Three days in Week 53 unloads are tracking ahead of last week's pace by fewer than 600 unloads.
  - There are more than 650 cars on site at Thunder Bay with 450 cars arriving at the port in the prior 24 hours.
  - There are fewer than 300 cars en route to Thunder Bay from Winnipeg and east.

**Daily Loads on Wheels - 7/31/2019**

	E Canada	Prince Rupert	Thunder Bay	USA/MEX	Vancouver	Total
CN	407	172	255	132	2,280	3,246
CP	72		1,069	107	2,476	3,724
Short Line	19				46	65
US Rail				75		75
	498	172	1,324	314	4,802	7,110

**Change in Loads on Wheels - Prior 24 Hours**

	E Canada	Prince Rupert	Thunder Bay	USA/MEX	Vancouver	Total
CN	-71	-176	-7	15	77	-162
CP	11		97	102	-134	76
Short Line	-2				-2	-4
US Rail				8		8
	-62	-176	90	125	-59	-82

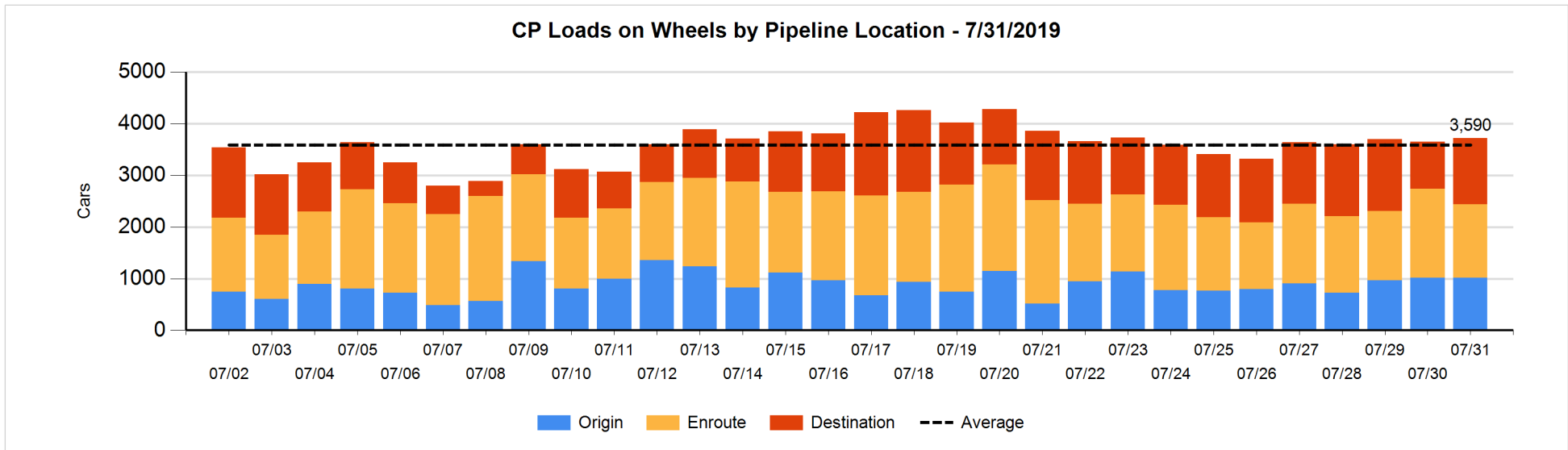
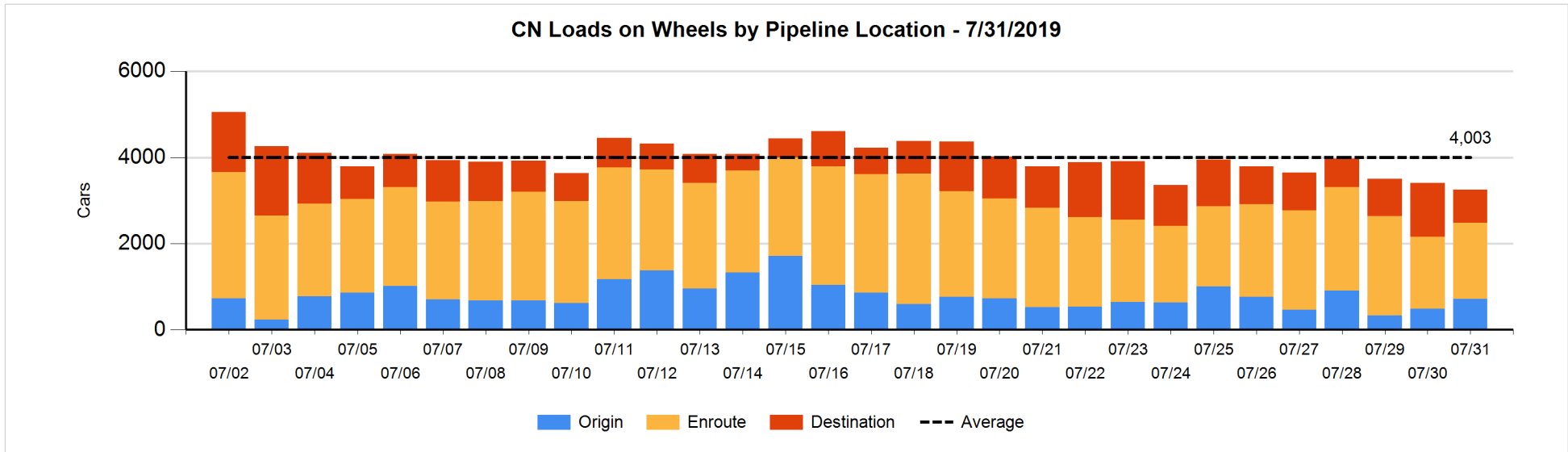


**Daily Loads on Wheels By Pipeline Location - 7/31/2019**

	E Canada	Prince Rupert	Thunder Bay	USA/MEX	Vancouver	Total
CN						
Origin	26		99	29	554	708
Enroute	229	95	3	84	1,366	1,777
Destination	152	77	153	19	360	761
	407	172	255	132	2,280	3,246
CP						
Origin	31		237	103	645	1,016
Enroute	37		314	4	1,068	1,423
Destination	4		518		763	1,285
	72		1,069	107	2,476	3,724
US Rail / Short Line						
Origin						
Enroute				60		60
Destination	19			15	46	80
	19			75	46	140

**Change in Daily Loads on Wheels By Pipeline Location - Prior 24 Hours**

	E Canada	Prince Rupert	Thunder Bay	USA/MEX	Vancouver	Total
CN						
Origin	25	-4	99	24	77	221
Enroute	-129	16	1	-8	226	106
Destination	33	-188	-107	-1	-226	-489
	-71	-176	-7	15	77	-162
CP						
Origin	24		111	102	-233	4
Enroute	-13		-419	0	125	-307
Destination	0		405		-26	379
	11		97	102	-134	76
US Rail / Short Line						
Origin						
Enroute				11		11
Destination	-2			-3	-2	-7
	-2			8	-2	4

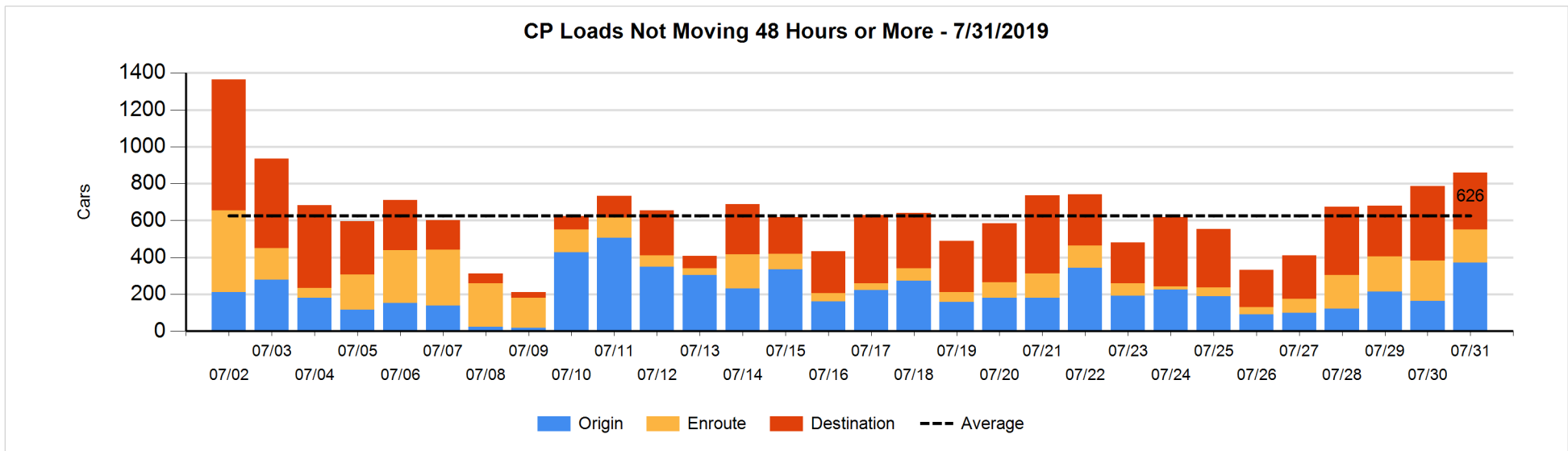
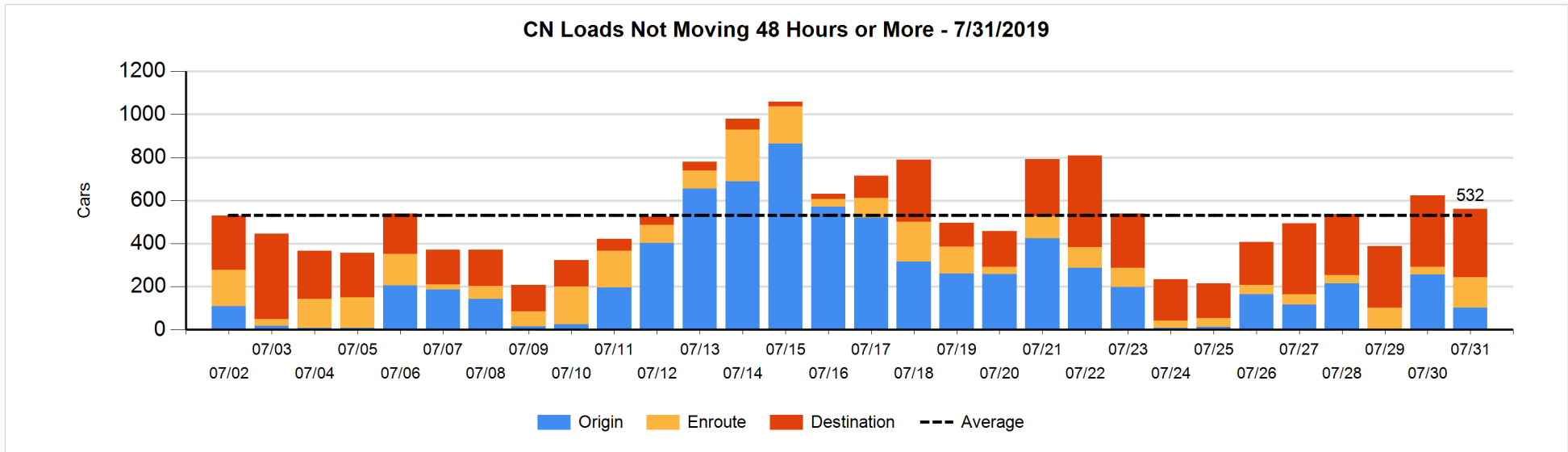


**Loads Not Moving 48 Hours or More - 7/31/2019**

	E Canada	Prince Rupert	Thunder Bay	USA/MEX	Vancouver	Total
CN						
Origin					103	103
Enroute	6	18		1	116	141
Destination	13	6	50	2	246	317
	19	24	50	3	465	561
CP						
Origin	7		74	1	288	370
Enroute	1		30	1	149	181
Destination	4		76		228	308
	12		180	2	665	859
US Rail / Short Line						
Origin						
Enroute				13		13
Destination	3			3	30	36
	3			16	30	49

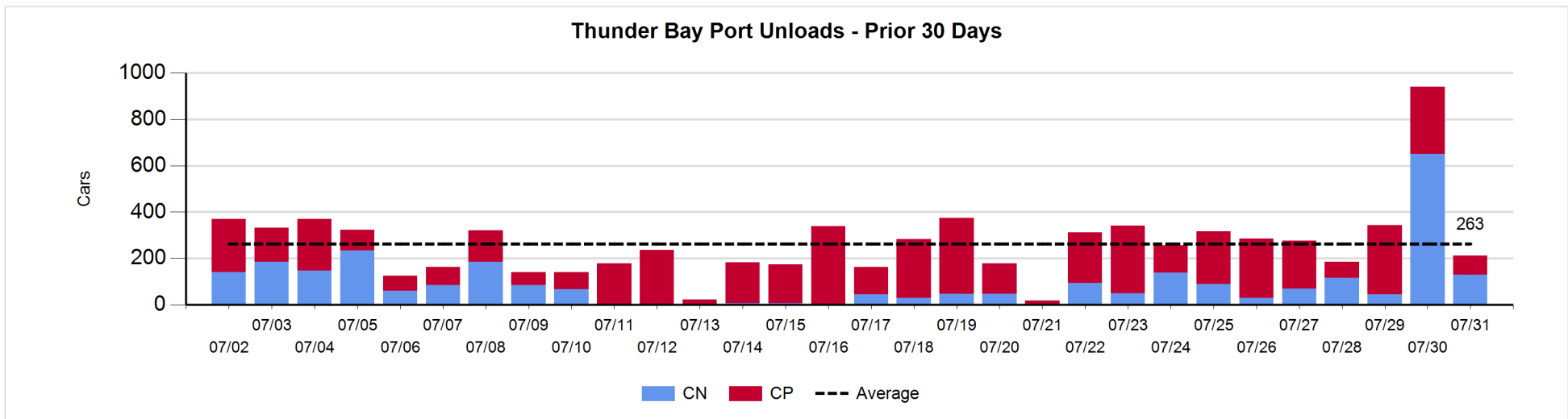
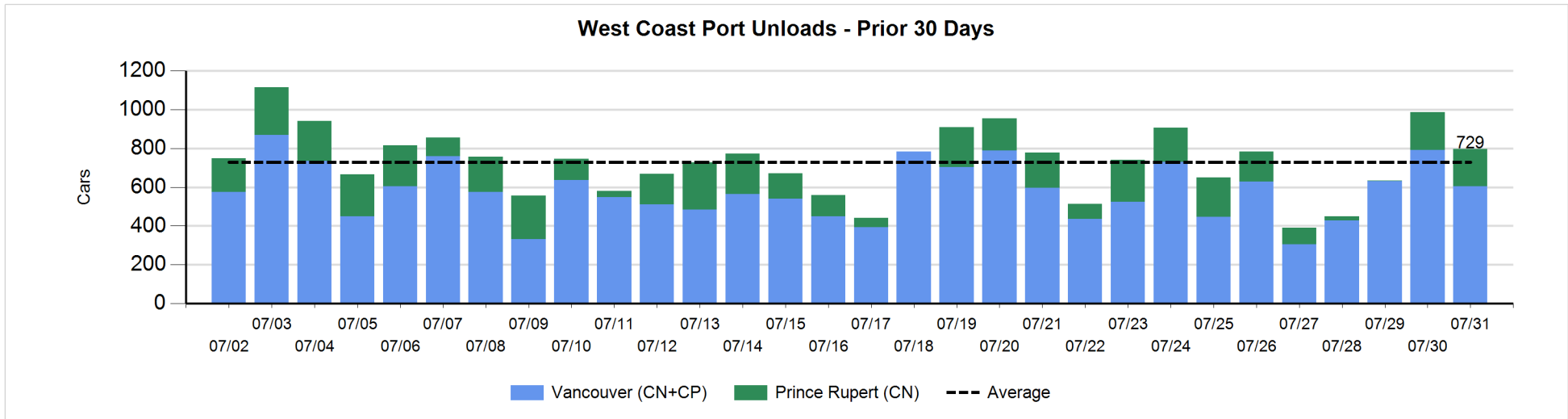
**Change in Loads Not Moving 48 Hours or More - 7/31/2019**

	E Canada	Prince Rupert	Thunder Bay	USA/MEX	Vancouver	Total
CN						
Origin					-152	-152
Enroute	-10	6		0	109	105
Destination	-2	-1	-8	-4	-1	-16
	-12	5	-8	-4	-44	-63
CP						
Origin	6		0	0	200	206
Enroute	-13		-8	0	-17	-38
Destination	0		-2		-93	-95
	-7		-10	0	90	73
US Rail / Short Line						
Origin						
Enroute				-1		-1
Destination	-3			0	-3	-6
	-3			-1	-3	-7



**Port Unloads - 7/31/2019**

	Prince Rupert	Vancouver	West Coast Total	Thunder Bay	Total
CN	192	143	335	130	465
CP		461	461	82	543
	192	604	796	212	1,008





**Port Terminal Status**

**Vancouver**

Daily Activity for 7/31/2019

	Cars Arrived	Cars Received in Interchange	Cars Delivered in Interchange	Cars Placed for Unloading	Loads on Wheels at Destination As of 7/31/2019
CN	145	5	183	113	360
CP	194	183	9	605	763
SRY		4		12	46

**Port Unloads**

	07/31	07/30	Week To Date	Last Week
CN	143	304	600	1,272
CP	461	486	1,424	2,223
SRY	6	7	31	58

**Age Profile of Loaded Cars Waiting Placement for Unloading**

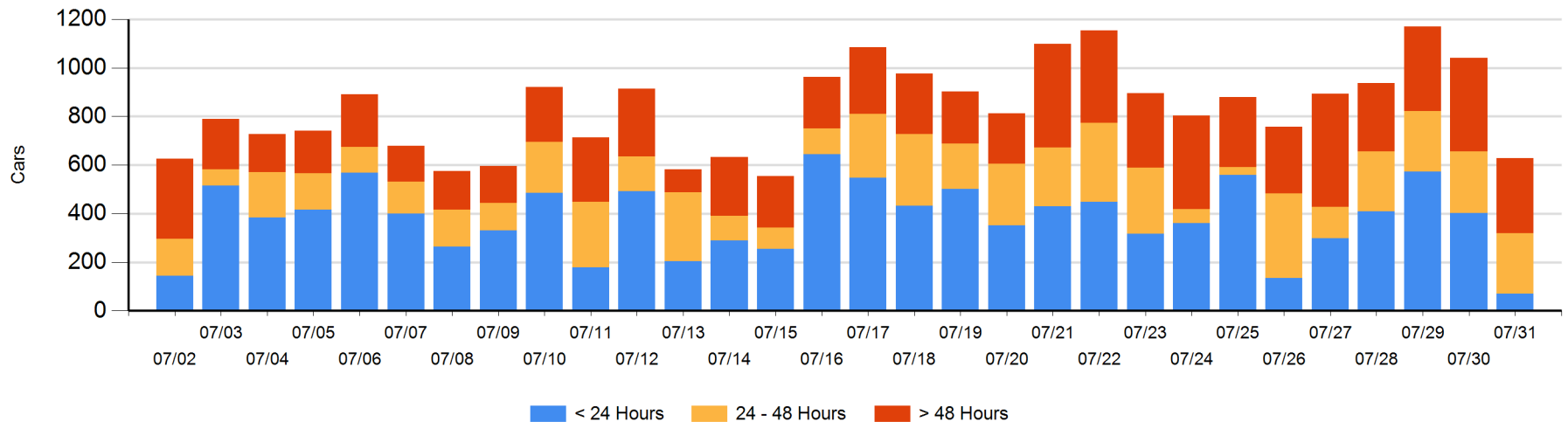
**Today**

	< 24 Hrs	24 - 48 Hrs	> 48-72 Hrs	> 72 Hrs	Total On Hand
CN	24	90		74	188
CP	46	159	33	202	440
SRY					0

**Change in Last 24 Hours**

	< 24 Hrs	24-48 Hrs	48 - 72 Hrs	> 72 Hrs
CN	-77	70	-108	4
CP	-255	-76	0	29
SRY				

**Loaded Cars on Hand Vancouver Waiting for Placement - Last 30 Days All Railways**



**Port Terminal Status**

**Prince Rupert**

Daily Activity for 7/31/2019

	Cars Arrived	Cars Received in Interchange	Cars Delivered in Interchange	Cars Placed for Unloading	Loads on Wheels at Destination As of 7/31/2019
CN		1		3	77

**Port Unloads**

	07/31	07/30	Week To Date	Last Week
CN	192	197	392	939

**Age Profile of Loaded Cars Waiting Placement for Unloading**

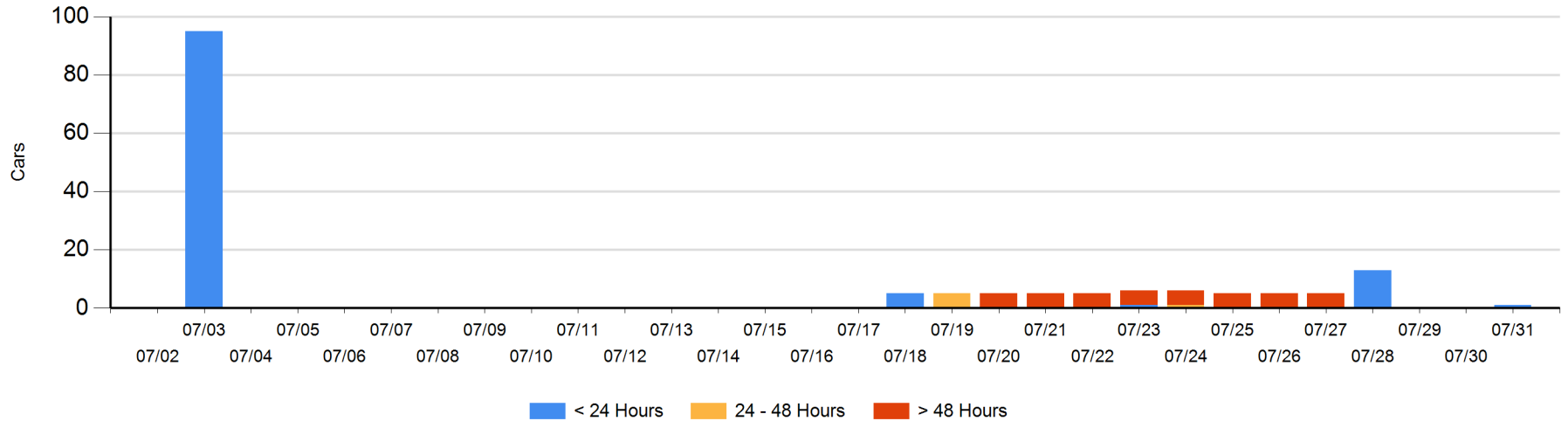
**Today**

	< 24 Hrs	24 - 48 Hrs	> 48-72 Hrs	> 72 Hrs	Total On Hand
CN	1				1

**Change in Last 24 Hours**

	< 24 Hrs	24-48 Hrs	48 - 72 Hrs	> 72 Hrs
CN	1			

Loaded Cars on Hand Prince Rupert Waiting for Placement - Last 30 Days All Railways



**Port Terminal Status**

**Thunder Bay**

Daily Activity for 7/31/2019

	Cars Arrived	Cars Received in Interchange	Cars Delivered in Interchange	Cars Placed for Unloading	Loads on Wheels at Destination As of 7/31/2019
CN				100	153
CP	442			41	518

**Port Unloads**

	07/31	07/30	Week To Date	Last Week
CN	130	650	825	587
CP	82	291	672	1,383

**Age Profile of Loaded Cars Waiting Placement for Unloading**

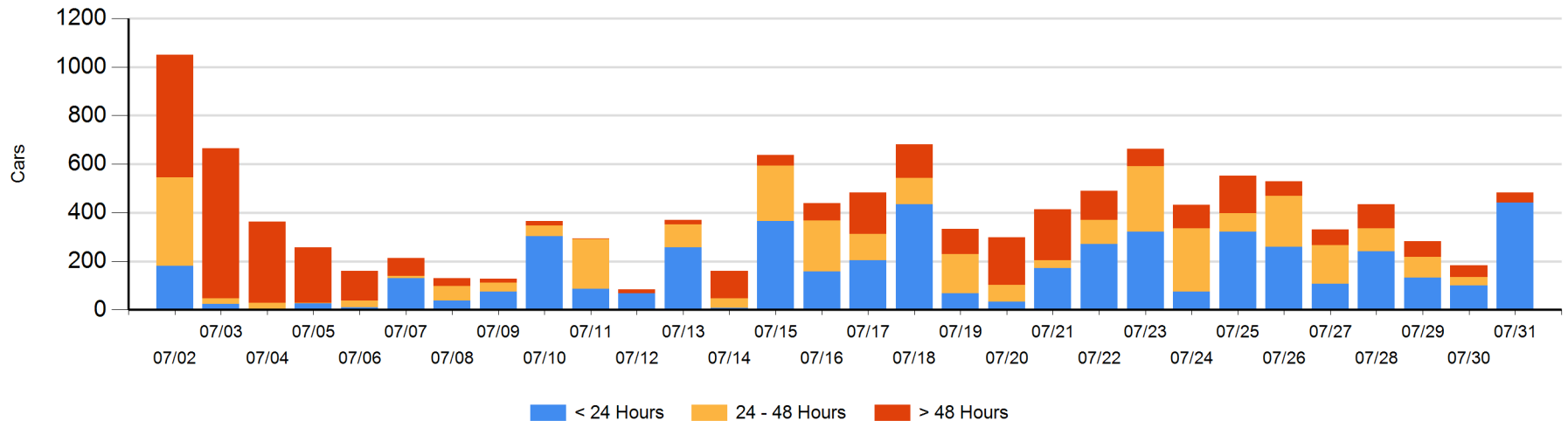
**Today**

	< 24 Hrs	24 - 48 Hrs	> 48-72 Hrs	> 72 Hrs	Total On Hand
CN				5	5
CP	442		35	1	478

**Change in Last 24 Hours**

	< 24 Hrs	24-48 Hrs	48 - 72 Hrs	> 72 Hrs
CN	-100			-1
CP	442	-35	-5	-1

**Loaded Cars on Hand Thunder Bay Waiting for Placement - Last 30 Days All Railways**



## Measurement Definitions

Loads on Wheels	<p>Count of loaded rail cars including all rail cars that have been released loaded at origin and have not been reported by the railway as unloaded at destination.</p> <p>Counts include all rail cars (hopper cars and boxcars) moving within a pipeline.</p>
Loads Not Moving	<p>Loaded rail cars for which the railways have not reported a movement event for 48 hours or more whether the rail car is at origin, enroute or at destination.</p>
Port Unloads	<p>Count of rail cars reported by railways as unloaded at the western port destinations of Vancouver, Prince Rupert and Thunder Bay.</p> <p>Unload counts include all rail cars (hopper cars and boxcars) unloaded by all receivers including major port terminals, transloaders and other receivers.</p>
Cars Arrived	<p>Count of rail cars reported as arrived at the destination railway terminal.</p>
Cars Received in Interchange	<p>Count of rail cars received in interchange by each railway within a destination railway terminal. Interchange activity is tracked for the Vancouver and Thunder Bay pipelines as applicable.</p>
Cars Delivered in Interchange	<p>Count of rail cars delivered in interchange by each railway within a destination railway terminal. Interchange activity is tracked for the Vancouver and Thunder Bay pipelines as applicable.</p>
Cars Placed for Unloading	<p>Count of rail cars reported by the railways as placed loaded at the receiver's facility for unloading.</p>
Loads on Wheels at Destination	<p>Count of rail cars that remain under load within the destination railway terminal including rail cars that have been reported as placed for unloading but not yet reported as unloaded.</p>
Waiting Placement for Unloading	<p>Count of rail cars that have been reported as arrived at the destination railway terminal but not reported as placed for unloading by the railway.</p> <p>For the Ports of Vancouver, Prince Rupert and Thunder Bay the count of rail cars waiting placement for unloading is categorized by age – i.e. the elapsed time from arrival at destination to the current report date.</p>