

SPEED READ

- Loads on wheels increased marginally overnight, reflecting an increase in CN volumes offset by lower CP volumes. On a net basis, volumes rose due to higher traffic in the Prince Rupert, Thunder Bay and USA/MEX corridors offset by lower traffic in the Vancouver and E. Canada corridors.
- Network fluidity deteriorated overnight, led by a rise in idle car counts on both CN and CP by 3% (+14) and 35% (+239), respectively. The total count of cars for 4+ days on both railways rose significantly by 127% (+226) overnight - presently at 404 cars.
- Week 44 unloads concluded behind prior week's performance by more than 900 unloads, marking lower unloads at Vancouver and Prince Rupert offset by improved week over week performance at Thunder Bay.

Loads on Wheels

- Loads on wheels increased marginally by 1% (+96) overnight and have now increased for the eighth consecutive day, due to higher volumes on CN offset by lower volumes on CP - combined total at 8,780 and 1% above the trailing 30-day average.
- On a net basis, the increase in loads on wheels reflects higher traffic in the Prince Rupert, Thunder Bay and USA/MEX corridors offset by lower traffic in the Vancouver and E. Canada corridors.
- CN volumes increased 6% (+233) overnight, with higher traffic in the Prince Rupert, Thunder Bay and E. Canada corridors offset by reduced volumes in the Vancouver and USA/MEX corridors. System wide CN loads on wheels currently at 4,187 and 2% below the trailing 30-day average.
- CP volumes fell 3% (-158) overnight, driven by a decline in traffic in three of four corridors - Vancouver, USA/MEX and E. Canada. CP system wide loads on wheels presently at 4,362 and 2% above the trailing 30-day average.
- Vancouver presently at 5,104, fell 6% (-298) overnight, now 2% below the trailing 30-day average.
- The Prince Rupert pipeline currently at 1,490, increased significantly by 23% (+277) overnight, and 17% above the trailing 30-day average.
- Thunder Bay volumes increased 9% (+103) overnight - currently at 1,218 and 5% below the trailing 30-day average, with 62% of traffic moving on CP.

Hopper Car Rationing

- CN rationed no hopper cars in week 43.

Loads Not Moving

- **The count of cars not moving for 48+ hours gained 22% (+253) overnight and have now increased for the third consecutive day, marking higher counts on both CN and CP. Idle car counts presently at 1,416 and 1% above the trailing 30-day average.**
- CN
 - **The count of idle cars for 48+ hours increased 3% (+14) overnight - presently at 489 cars.**
 - The number of cars idle for 4+ days increased significantly by 184% (+103) overnight - currently at 159 cars.
 - The count of cars not moving for 7+ days rose 3% (+1) overnight - presently at 40 cars.
 - Vancouver represents 75% of all idle cars.
 - In total 44% of all idle cars are dwelling at origin locations.
- CP
 - **CP idle car counts for 48+ hours gained 35% (+239) overnight and have now increased for the third consecutive day - currently at 927 cars.**
 - The number of cars idle for 4+ days increased significantly by 101% (+123) overnight - presently at 245 cars.
 - The number of cars idle for 7+ days rose 29% (+5) overnight - currently at 22 cars.

- Vancouver accounts for 84% of all idle cars.
- In total 22% of all idle cars are dwelling at origin locations.

Port Performance

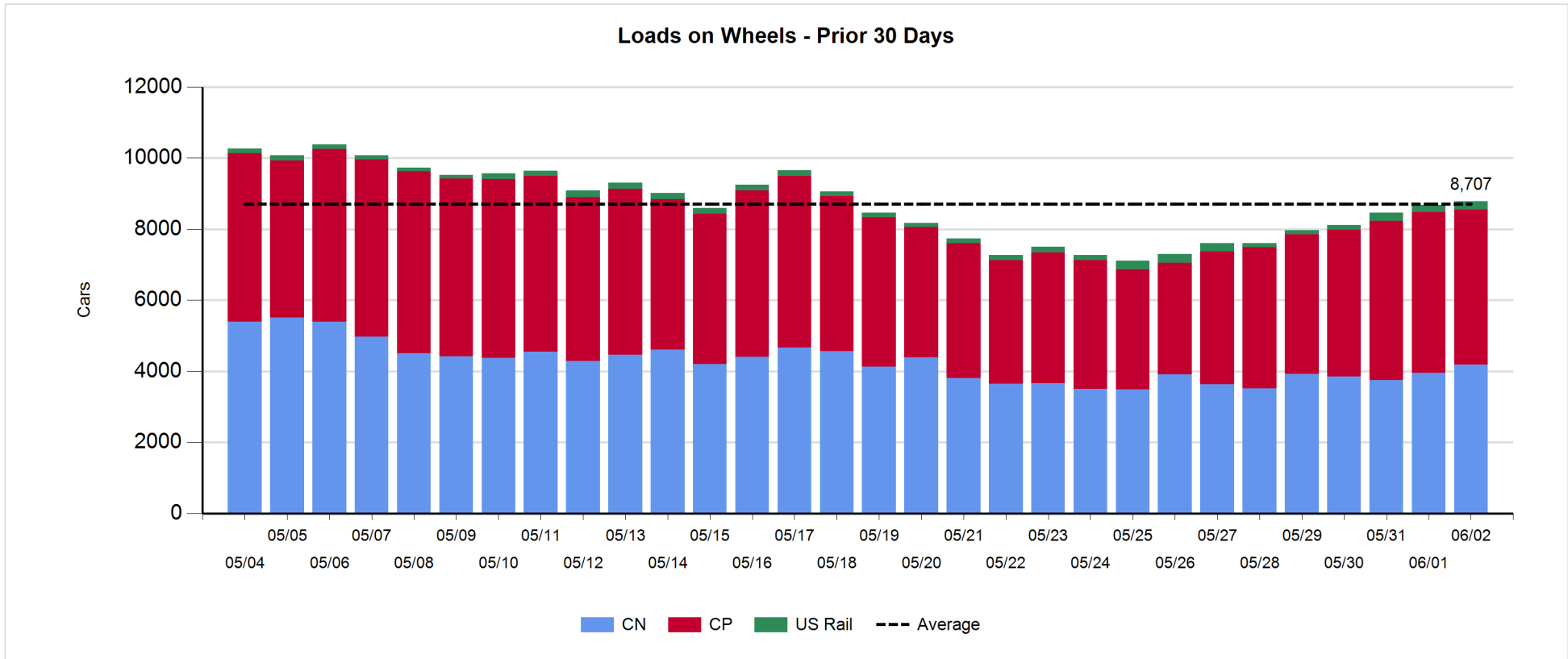
- CN and CP reported a total of 734 cars unloaded at the three major ports, the lowest seen in the last 30 days, now 33% below the trailing 30-day average. Week 44 unloads concluded behind last week's pace by more than 900 unloads, marking lower unloads at Vancouver and Prince Rupert offset by higher unloads at Thunder Bay.
- Vancouver
 - 723 unloads reported by CN and CP at the Port of Vancouver; CN - 314 and CP - 409. Week 44 unloads ended behind last week's performance by more than 900 unloads.
 - There are about 1,450 cars on site at Vancouver with more than 300 cars arriving at the port in the last 24 hours.
 - CN and CP have 1,150 cars in British Columbia en route to Vancouver, with about 350 cars at Kamloops and west, and 69% of traffic moving on CP.
- Prince Rupert
 - Prince Rupert reported 10 unloads, concluded behind last week's unloads by fewer than 200 unloads.
 - Loads on wheels now above 1,000 cars - presently at 1,490 cars.
 - There are more than 400 cars west of Jasper en route to Prince Rupert.
 - There are 6 cars on site at Prince Rupert with 1 car arriving at the port in the last 24 hours.
- Thunder Bay
 - 1 unloads, the lowest seen in the last 30 days, were reported at Thunder Bay yesterday. Week 44 unloads concluded ahead of last week's pace by around 200 unloads.
 - There are 550 cars on site at Thunder Bay with less than 100 cars arriving at the port in the prior 24 hours.
 - There are 450 cars en route to Thunder Bay from Winnipeg and east.

Daily Loads on Wheels - 6/2/2019

	E Canada	Prince Rupert	Thunder Bay	USA/MEX	Vancouver	Total
CN	331	1,490	463	213	1,690	4,187
CP	99		755	165	3,343	4,362
Short Line	8				71	79
US Rail				152		152
	438	1,490	1,218	530	5,104	8,780

Change in Loads on Wheels - Prior 24 Hours

	E Canada	Prince Rupert	Thunder Bay	USA/MEX	Vancouver	Total
CN	4	277	103	-2	-149	233
CP	-6		0	-4	-148	-158
Short Line	0				-1	-1
US Rail				22		22
	-2	277	103	16	-298	96

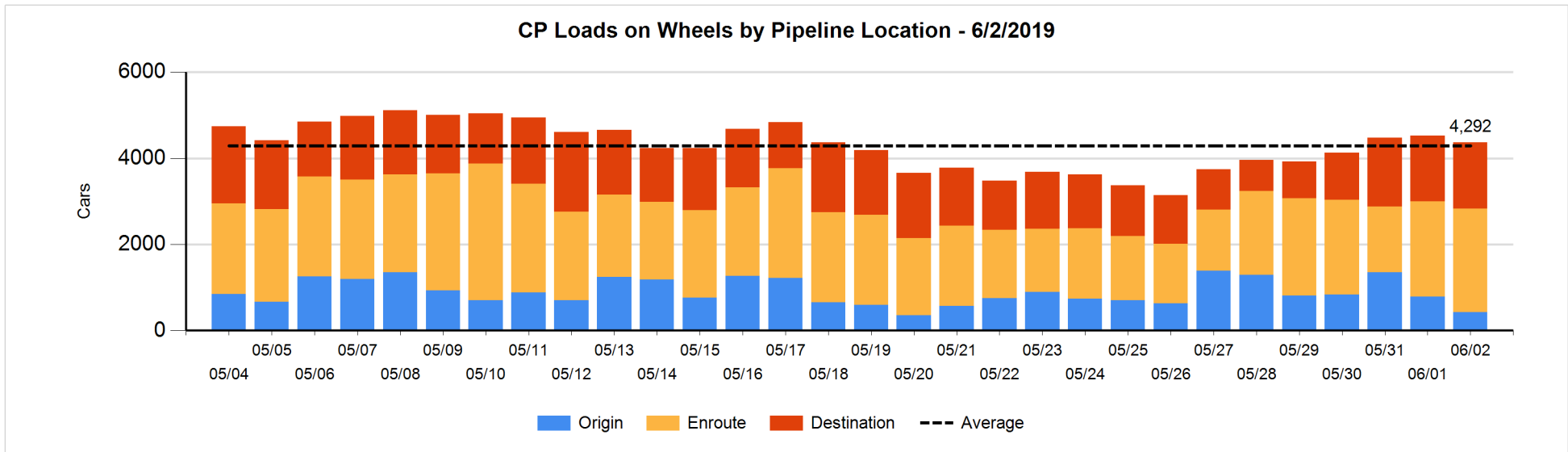
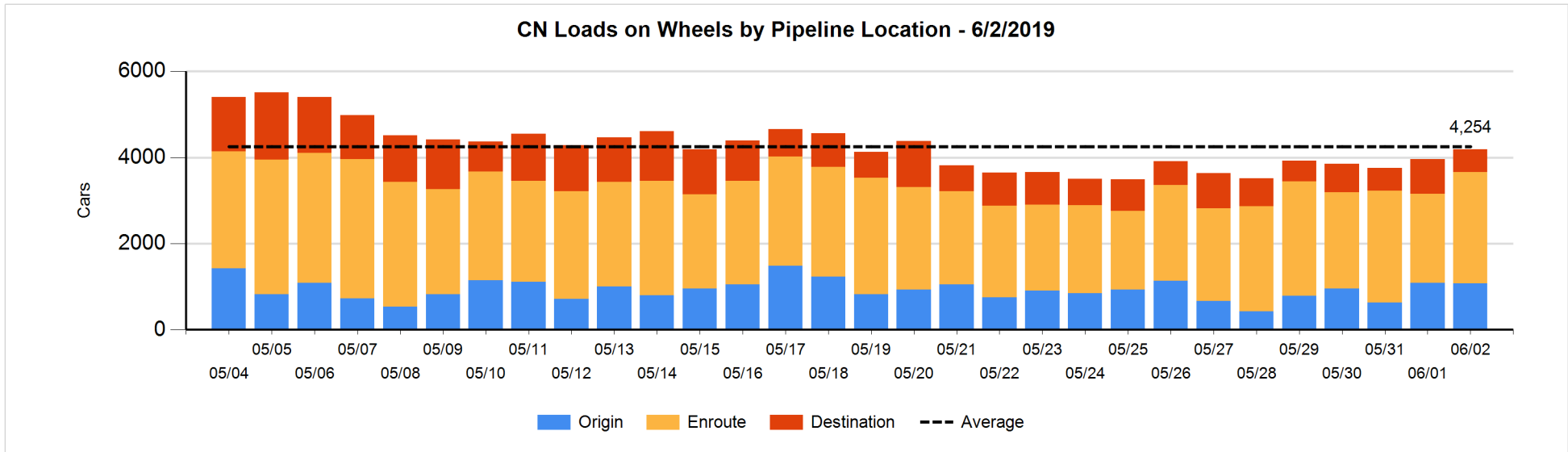


Daily Loads on Wheels By Pipeline Location - 6/2/2019

	E Canada	Prince Rupert	Thunder Bay	USA/MEX	Vancouver	Total
CN						
Origin	1	394	201		480	1,076
Enroute	303	1,090	156	199	830	2,578
Destination	27	6	106	14	380	533
	331	1,490	463	213	1,690	4,187
CP						
Origin	2		3	2	413	420
Enroute	41		305	116	1,950	2,412
Destination	56		447	47	981	1,531
	99		755	165	3,344	4,363
US Rail / Short Line						
Origin						
Enroute				94		94
Destination	8			58	71	137
	8			152	71	231

Change in Daily Loads on Wheels By Pipeline Location - Prior 24 Hours

	E Canada	Prince Rupert	Thunder Bay	USA/MEX	Vancouver	Total
CN						
Origin	-100	38	1	-68	116	-13
Enroute	106	235	102	66	6	515
Destination	-2	4	0	0	-271	-269
	4	277	103	-2	-149	233
CP						
Origin	-12		-71	0	-286	-369
Enroute	-36		-9	-19	266	202
Destination	42		80	15	-128	9
	-6		0	-4	-148	-158
US Rail / Short Line						
Origin						
Enroute				24		24
Destination	0			-2	-1	-3
	0			22	-1	21

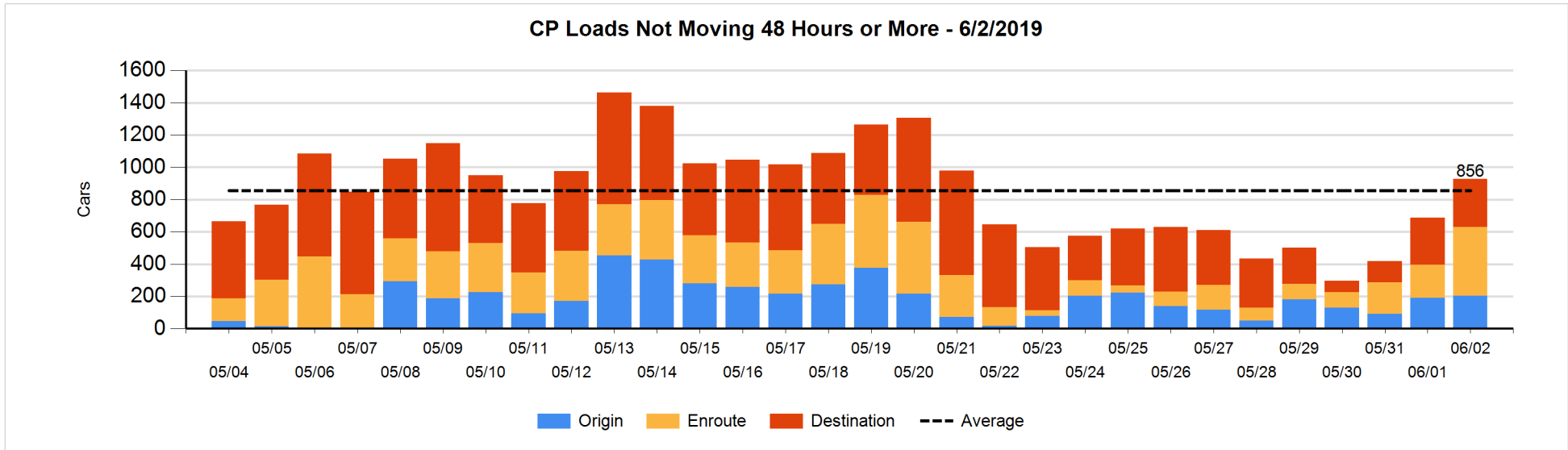
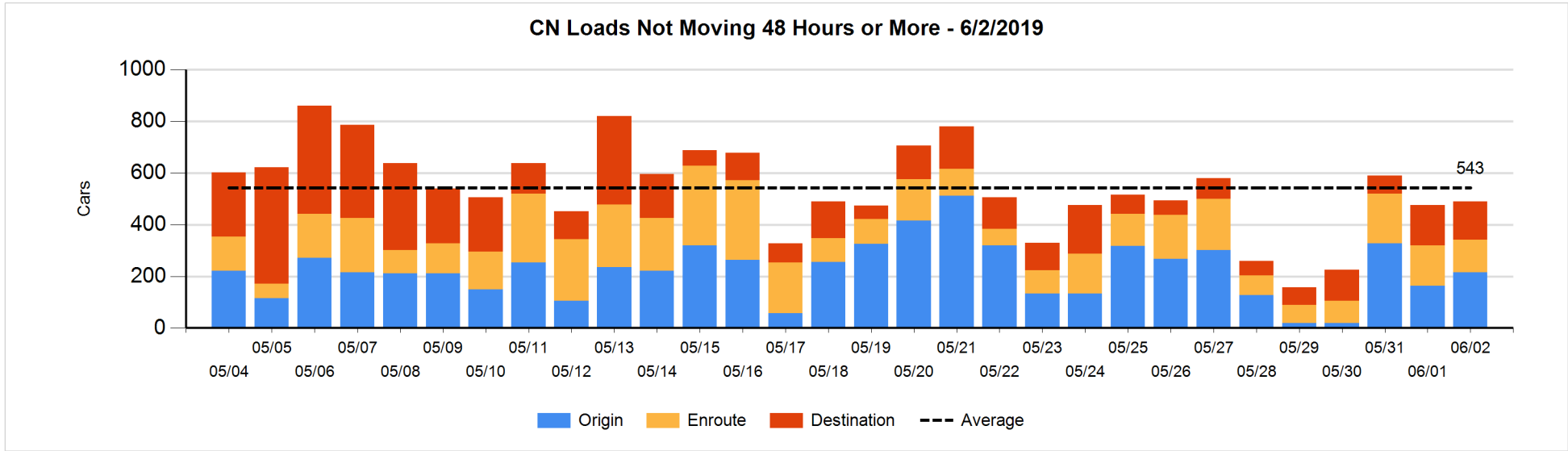


Loads Not Moving 48 Hours or More - 6/2/2019

	E Canada	Prince Rupert	Thunder Bay	USA/MEX	Vancouver	Total
CN						
Origin	1	7			207	215
Enroute	22	56	1	13	34	126
Destination	4	2	6	11	125	148
	27	65	7	24	366	489
CP						
Origin	2		3	2	195	202
Enroute	4		1	63	361	429
Destination	7		60	6	223	296
	13		64	71	779	927
US Rail / Short Line						
Origin						
Enroute				28		28
Destination	8			53	37	98
	8			81	37	126

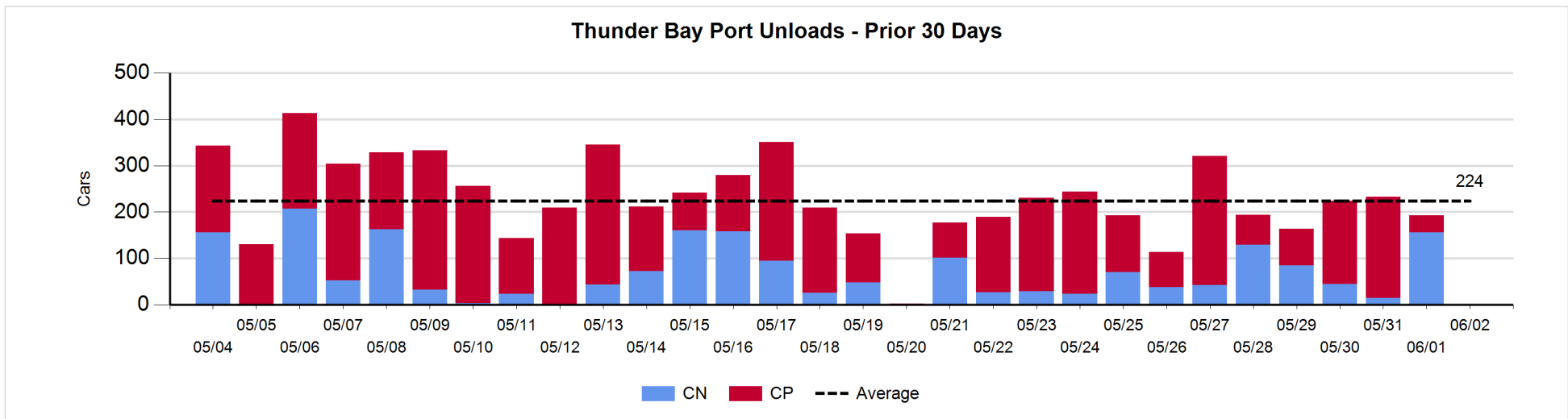
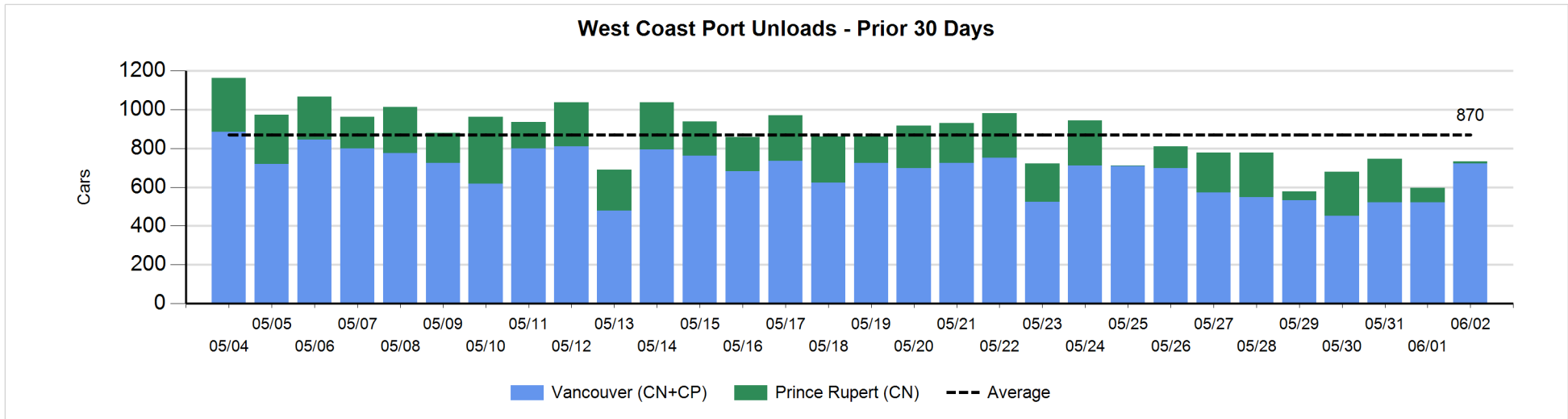
Change in Loads Not Moving 48 Hours or More - 6/2/2019

	E Canada	Prince Rupert	Thunder Bay	USA/MEX	Vancouver	Total
CN						
Origin	1	0		-53	103	51
Enroute	11	-50	0	0	9	-30
Destination	-18	0	0	-1	12	-7
	-6	-50	0	-54	124	14
CP						
Origin	-6		-40	2	56	12
Enroute	1		-1	13	212	225
Destination	0		14	0	-12	2
	-5		-27	15	256	239
US Rail / Short Line						
Origin						
Enroute				-4		-4
Destination	8			36	24	68
	8			32	24	64



Port Unloads - 6/2/2019

	Prince Rupert	Vancouver	West Coast Total	Thunder Bay	Total
CN	10	314	324		324
CP		409	409	1	410
	10	723	733	1	734



Port Terminal Status

Vancouver

Daily Activity for 6/2/2019

	Cars Arrived	Cars Received in Interchange	Cars Delivered in Interchange	Cars Placed for Unloading	Loads on Wheels at Destination As of 6/2/2019
CN	11		80	262	380
CP	318	80	1	405	981
SRY		1		2	71

Port Unloads

	06/02	06/01	Week To Date	Last Week
CN	314	239	1,083	1,751
CP	409	283	2,788	3,063
SRY	6	7	63	43

Age Profile of Loaded Cars Waiting Placement for Unloading

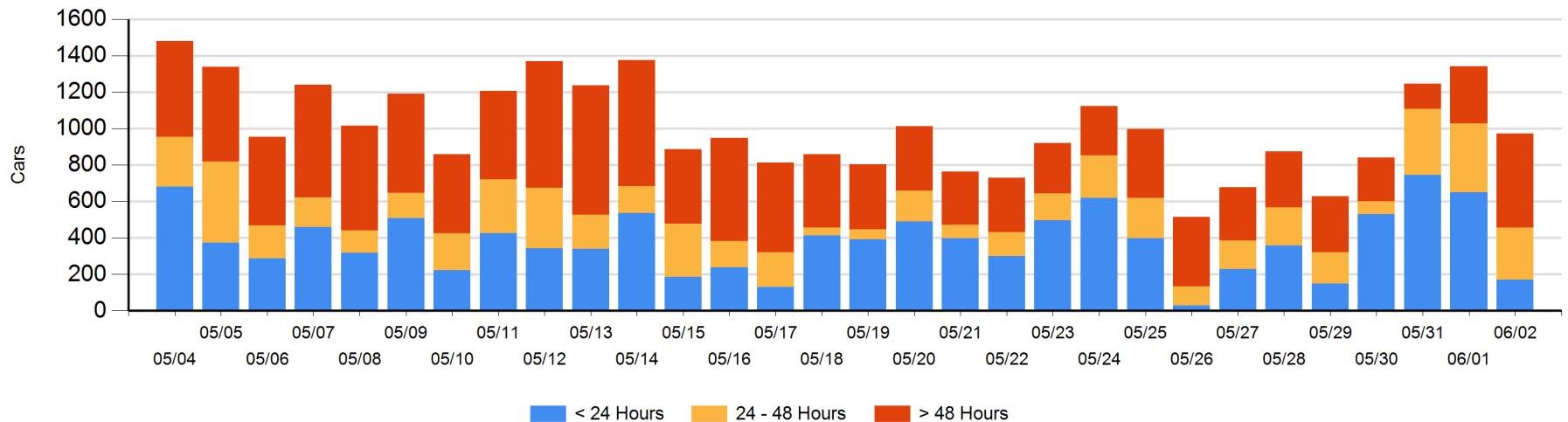
Today

	< 24 Hrs	24 - 48 Hrs	> 48-72 Hrs	> 72 Hrs	Total On Hand
CN	11	211		10	232
CP	160	74	264	244	742
SRY					0

Change in Last 24 Hours

	< 24 Hrs	24-48 Hrs	48 - 72 Hrs	> 72 Hrs
CN	-472	211	-2	-5
CP	-6	-306	31	181
SRY				

Loaded Cars on Hand Vancouver Waiting for Placement - Last 30 Days All Railways



Port Terminal Status

Prince Rupert

Daily Activity for 6/2/2019

	Cars Arrived	Cars Received in Interchange	Cars Delivered in Interchange	Cars Placed for Unloading	Loads on Wheels at Destination As of 6/2/2019
CN		1		3	6

Port Unloads

	06/02	06/01	Week To Date	Last Week
CN	10	73	1,016	1,201

Age Profile of Loaded Cars Waiting Placement for Unloading

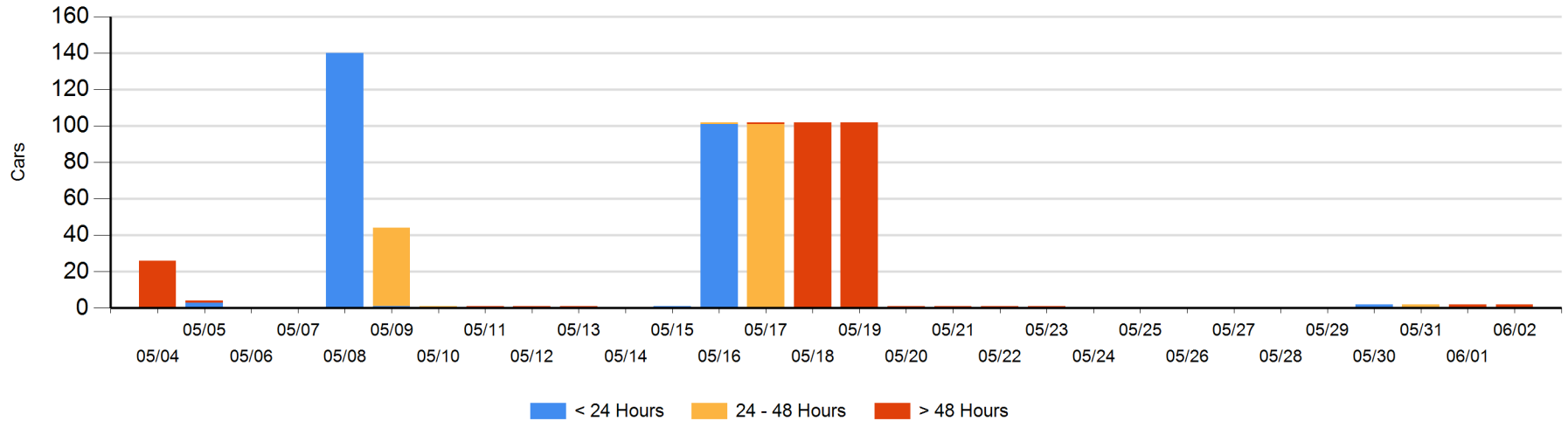
Today

	< 24 Hrs	24 - 48 Hrs	> 48-72 Hrs	> 72 Hrs	Total On Hand
CN				2	2

Change in Last 24 Hours

	< 24 Hrs	24-48 Hrs	48 - 72 Hrs	> 72 Hrs
CN			-2	2

Loaded Cars on Hand Prince Rupert Waiting for Placement - Last 30 Days All Railways



Port Terminal Status

Thunder Bay

Daily Activity for 6/2/2019

	Cars Arrived	Cars Received in Interchange	Cars Delivered in Interchange	Cars Placed for Unloading	Loads on Wheels at Destination As of 6/2/2019
CN					106
CP	81			154	447

Port Unloads

	06/02	06/01	Week To Date	Last Week
CN		156	473	288
CP	1	37	857	862

Age Profile of Loaded Cars Waiting Placement for Unloading

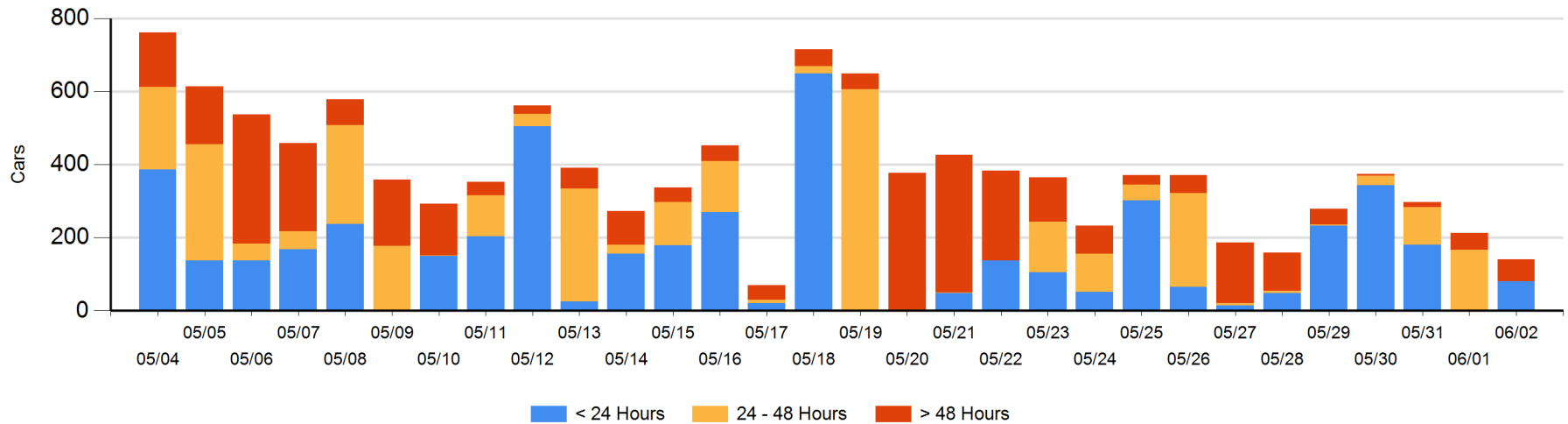
Today

	< 24 Hrs	24 - 48 Hrs	> 48-72 Hrs	> 72 Hrs	Total On Hand
CN					0
CP	80		18	42	140

Change in Last 24 Hours

	< 24 Hrs	24-48 Hrs	48 - 72 Hrs	> 72 Hrs
CN				
CP	80	-167	-23	37

Loaded Cars on Hand Thunder Bay Waiting for Placement - Last 30 Days All Railways



Measurement Definitions

Loads on Wheels	<p>Count of loaded rail cars including all rail cars that have been released loaded at origin and have not been reported by the railway as unloaded at destination.</p> <p>Counts include all rail cars (hopper cars and boxcars) moving within a pipeline.</p>
Loads Not Moving	<p>Loaded rail cars for which the railways have not reported a movement event for 48 hours or more whether the rail car is at origin, enroute or at destination.</p>
Port Unloads	<p>Count of rail cars reported by railways as unloaded at the western port destinations of Vancouver, Prince Rupert and Thunder Bay.</p> <p>Unload counts include all rail cars (hopper cars and boxcars) unloaded by all receivers including major port terminals, transloaders and other receivers.</p>
Cars Arrived	<p>Count of rail cars reported as arrived at the destination railway terminal.</p>
Cars Received in Interchange	<p>Count of rail cars received in interchange by each railway within a destination railway terminal. Interchange activity is tracked for the Vancouver and Thunder Bay pipelines as applicable.</p>
Cars Delivered in Interchange	<p>Count of rail cars delivered in interchange by each railway within a destination railway terminal. Interchange activity is tracked for the Vancouver and Thunder Bay pipelines as applicable.</p>
Cars Placed for Unloading	<p>Count of rail cars reported by the railways as placed loaded at the receiver's facility for unloading.</p>
Loads on Wheels at Destination	<p>Count of rail cars that remain under load within the destination railway terminal including rail cars that have been reported as placed for unloading but not yet reported as unloaded.</p>
Waiting Placement for Unloading	<p>Count of rail cars that have been reported as arrived at the destination railway terminal but not reported as placed for unloading by the railway.</p> <p>For the Ports of Vancouver, Prince Rupert and Thunder Bay the count of rail cars waiting placement for unloading is categorized by age – i.e. the elapsed time from arrival at destination to the current report date.</p>