

SPEED READ

- Loads on wheels gained overnight, marking an increase in both CN and CP volumes. On a net basis, volumes increased due to higher volumes across all corridors other than Thunder Bay.
- Network fluidity improved overnight, led by a decline in idle car counts on both CN and CP by 17% (-56) and 16% (-98), respectively. The total count of cars for 4+ days on both railways fell 19% (-80) overnight - presently at 349 cars.
- Two days in Week 45 unloads now ahead of prior week's performance by more than 500 unloads, reflecting improved week over week performance at Vancouver and Thunder Bay offset by reduced unloads at Prince Rupert.

Loads on Wheels

- Loads on wheels gained for the tenth consecutive day, up 4% (+384) overnight, due to higher volumes on both CN and CP - combined total at 9,317 and 8% above the trailing 30-day average.
- On a net basis, the rise in loads on wheels reflects higher volumes across all corridors other than Thunder Bay.
- CN volumes increased 8% (+323) overnight and have now increased for the fourth consecutive day, with higher traffic in the Vancouver, Prince Rupert and E. Canada corridors offset by lower traffic in the Thunder Bay and USA/MEX corridors. System wide CN loads on wheels presently at 4,528 and 8% above the trailing 30-day average.
- CP volumes increased slightly by 1% (+62) overnight, driven by a rise in traffic across all corridors other than Vancouver. CP system wide loads on wheels now at 4,598 and 7% above the trailing 30-day average.
- Vancouver now at 5,303, gained 4% (+205) overnight, now 3% above the trailing 30-day average.
- The Prince Rupert pipeline presently at 1,543, increased 7% (+98) overnight, and 22% above the trailing 30-day average.
- Thunder Bay volumes fell 4% (-48) overnight - presently at 1,270 and 1% above the trailing 30-day average, with 73% of traffic moving on CP.

Hopper Car Rationing

- CN rationed no hopper cars in week 43.

Loads Not Moving

- **The count of cars not moving for 48+ hours fell 16% (-154) overnight, reflecting lower counts on both CN and CP. Idle car counts now at 785 and 43% below the trailing 30-day average.**
- CN
 - **The count of idle cars for 48+ hours declined 17% (-56) overnight - now at 276 cars.**
 - The number of cars idle for 4+ days gained significantly by 65% (+40) overnight - presently at 102 cars.
 - The count of cars not moving for 7+ days declined 2% (-1) overnight - now at 42 cars.
 - Vancouver represents 13% of all idle cars.
 - In total 31% of all idle cars are dwelling at origin locations.
- CP
 - **CP idle car counts for 48+ hours decreased 16% (-98) overnight - now at 509 cars.**
 - The number of cars idle for 4+ days decreased 33% (-120) overnight - currently at 247 cars.
 - The number of cars idle for 7+ days fell 12% (-4) overnight - currently at 29 cars.
 - Vancouver accounts for 73% of all idle cars.

- In total 12% of all idle cars are dwelling at origin locations.

Port Performance

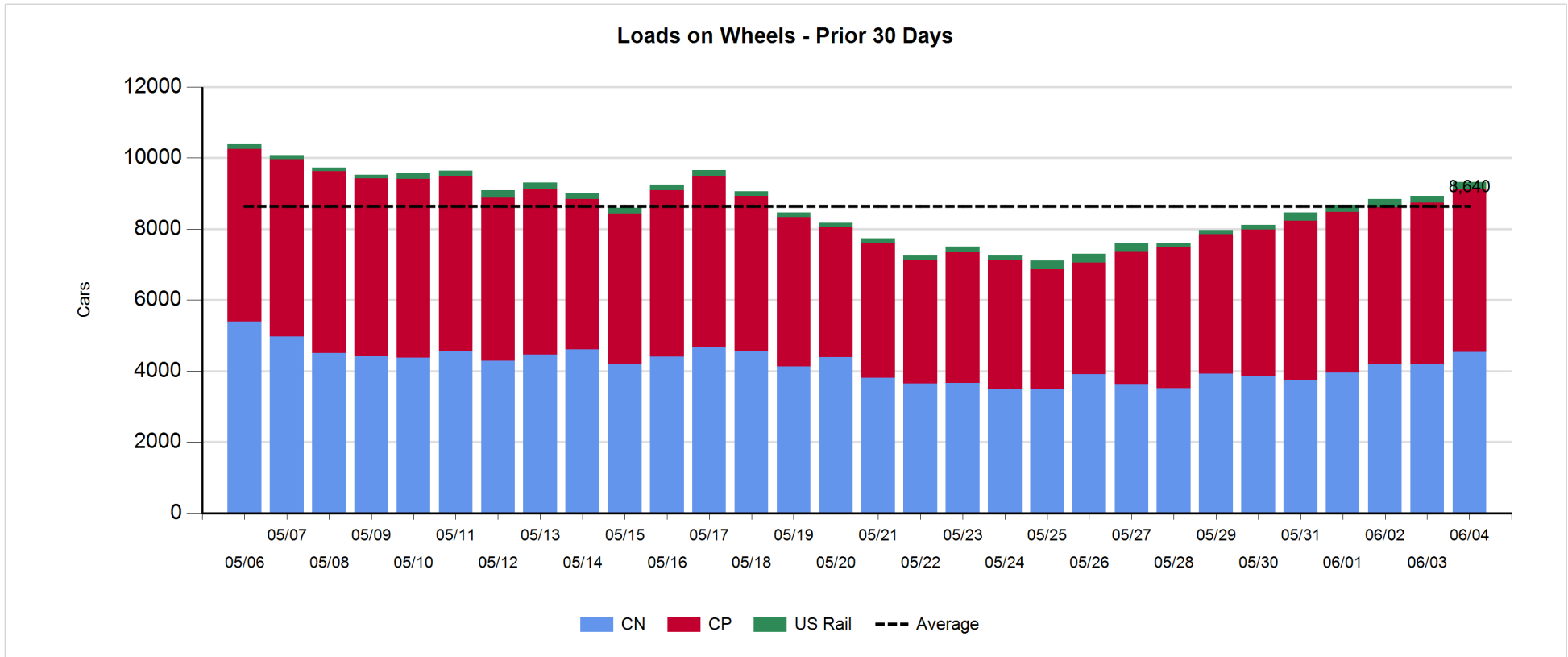
- CN and CP reported a total of 1,438 cars unloaded at the three major ports, now 32% above the trailing 30-day average. Two days in Week 45 unloads now ahead of last week's pace by more than 500 unloads, reflecting higher unloads at Vancouver and Thunder Bay offset by reduced unloads at Prince Rupert.
- Vancouver
 - 834 unloads reported by CN and CP at the Port of Vancouver; CN - 377 and CP - 457. Two days in Week 45 unloads are tracking ahead of last week's performance by more than 450 unloads.
 - There are nearly 1,400 cars on site at Vancouver with 950 cars arriving at the port in the last 24 hours.
 - CN and CP have nearly 1,250 cars in British Columbia en route to Vancouver, with more than 250 cars at Kamloops and west, and 79% of traffic moving on CP.
- Prince Rupert
 - Prince Rupert reported 204 unloads, now behind last week's unloads after two days by around 150 unloads.
 - Loads on wheels now above 1,000 cars - presently at 1,543 cars.
 - There are 600 cars west of Jasper en route to Prince Rupert.
 - There are nearly 150 cars on site at Prince Rupert with 300 cars arriving at the port in the last 24 hours.
- Thunder Bay
 - 400 unloads were reported at Thunder Bay yesterday. Two days in Week 45 unloads are tracking ahead of last week's pace by nearly 200 unloads.
 - There are nearly 450 cars on site at Thunder Bay with more than 100 cars arriving at the port in the prior 24 hours.
 - There are more than 100 cars en route to Thunder Bay from Winnipeg and east.

Daily Loads on Wheels - 6/4/2019

	E Canada	Prince Rupert	Thunder Bay	USA/MEX	Vancouver	Total
CN	501	1,543	337	197	1,950	4,528
CP	194		933	167	3,304	4,598
Short Line	12				49	61
US Rail				130		130
	707	1,543	1,270	494	5,303	9,317

Change in Loads on Wheels - Prior 24 Hours

	E Canada	Prince Rupert	Thunder Bay	USA/MEX	Vancouver	Total
CN	77	98	-116	-17	281	323
CP	2		68	57	-65	62
Short Line	4				-11	-7
US Rail				6		6
	83	98	-48	46	205	384

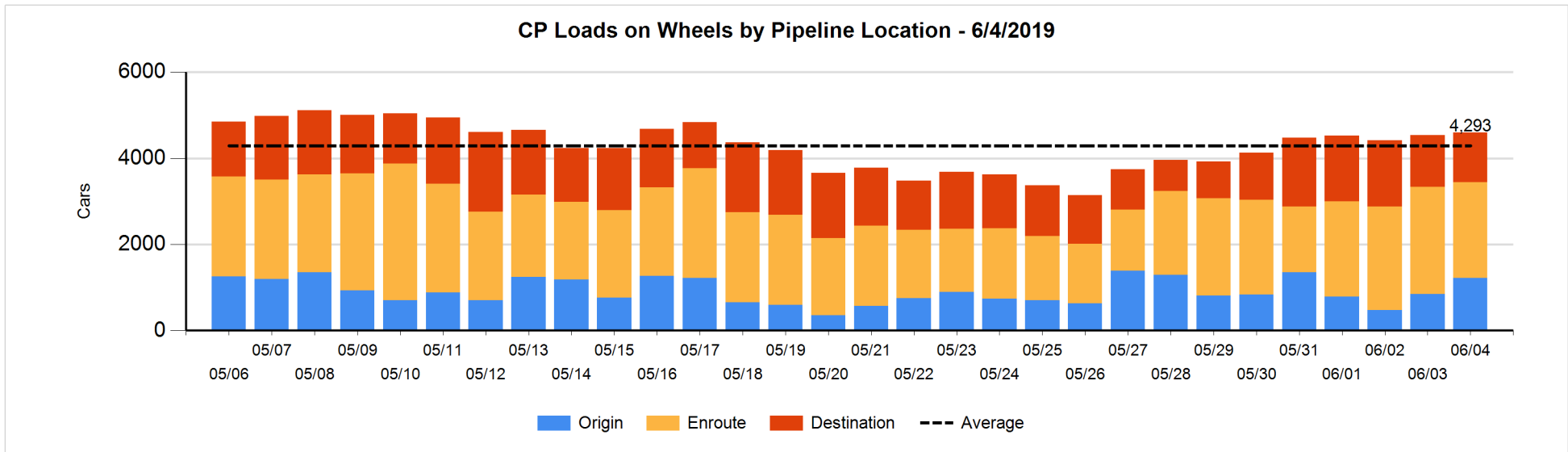
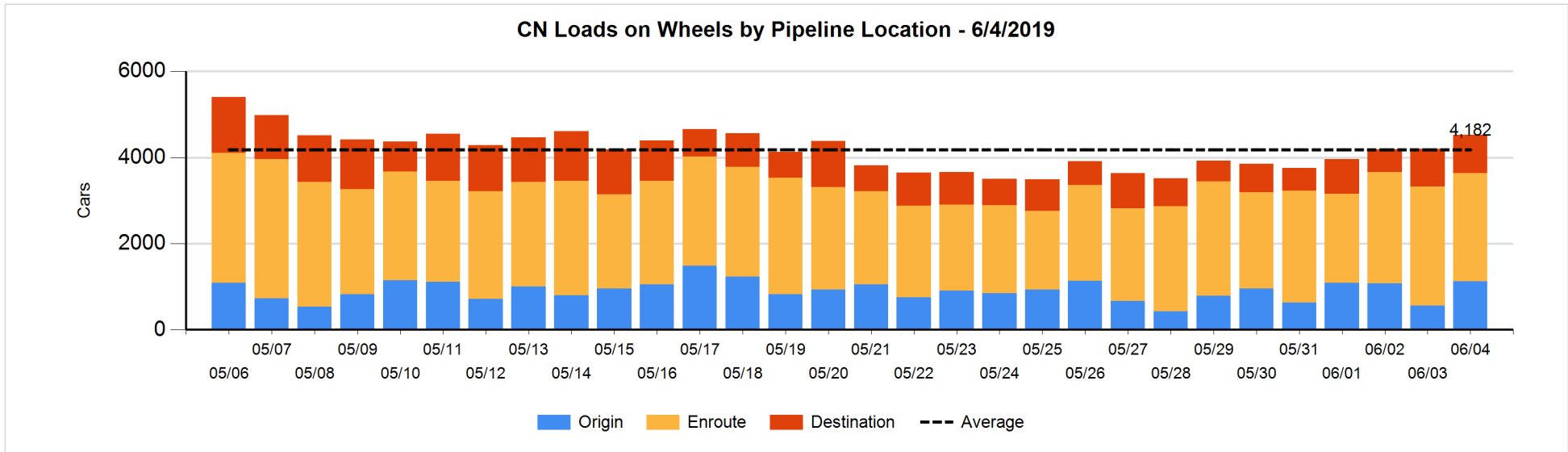


Daily Loads on Wheels By Pipeline Location - 6/4/2019

	E Canada	Prince Rupert	Thunder Bay	USA/MEX	Vancouver	Total
CN						
Origin	226	437		10	453	1,126
Enroute	245	975	104	138	1,048	2,510
Destination	30	131	233	49	449	892
	501	1,543	337	197	1,950	4,528
CP						
Origin	63		342	97	721	1,223
Enroute	87		394	49	1,693	2,223
Destination	44		197	21	891	1,153
	194		933	167	3,305	4,599
US Rail / Short Line						
Origin	5					5
Enroute				87		87
Destination	7			43	49	99
	12			130	49	191

Change in Daily Loads on Wheels By Pipeline Location - Prior 24 Hours

	E Canada	Prince Rupert	Thunder Bay	USA/MEX	Vancouver	Total
CN						
Origin	118	302	-103	4	243	564
Enroute	-55	-301	5	-8	112	-247
Destination	14	97	-18	-13	-74	6
	77	98	-116	-17	281	323
CP						
Origin	-50		49	97	281	377
Enroute	55		251	-49	-518	-261
Destination	-3		-232	9	172	-54
	2		68	57	-65	62
US Rail / Short Line						
Origin	5					5
Enroute				-10		-10
Destination	-1			16	-11	4
	4			6	-11	-1

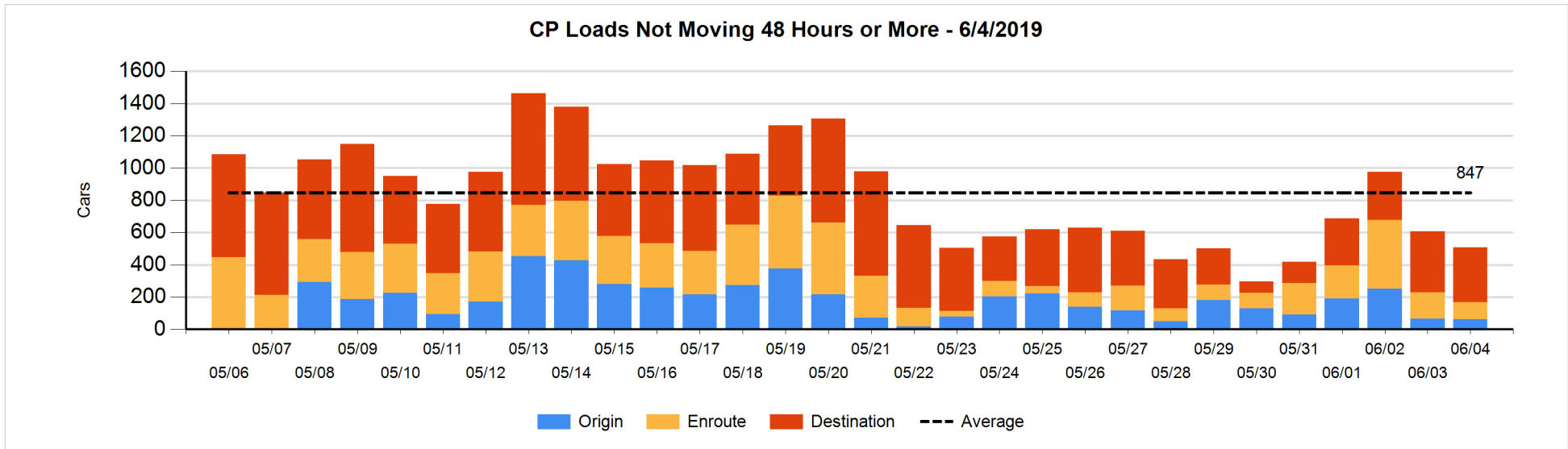
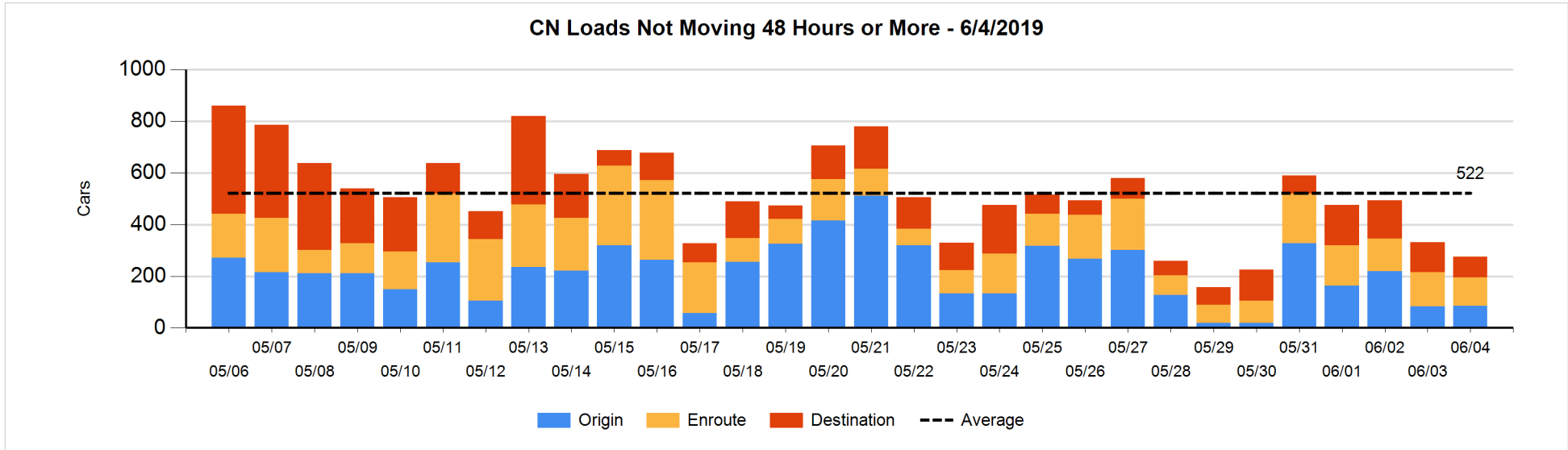


Loads Not Moving 48 Hours or More - 6/4/2019

	E Canada	Prince Rupert	Thunder Bay	USA/MEX	Vancouver	Total
CN						
Origin		85				85
Enroute	14	53	1	28	14	110
Destination	1	4	51	3	22	81
	15	142	52	31	36	276
CP						
Origin	2		3		57	62
Enroute			2	17	86	105
Destination	34		78		230	342
	36		83	17	373	509
US Rail / Short Line						
Origin						
Enroute				26		26
Destination	7			19	5	31
	7			45	5	57

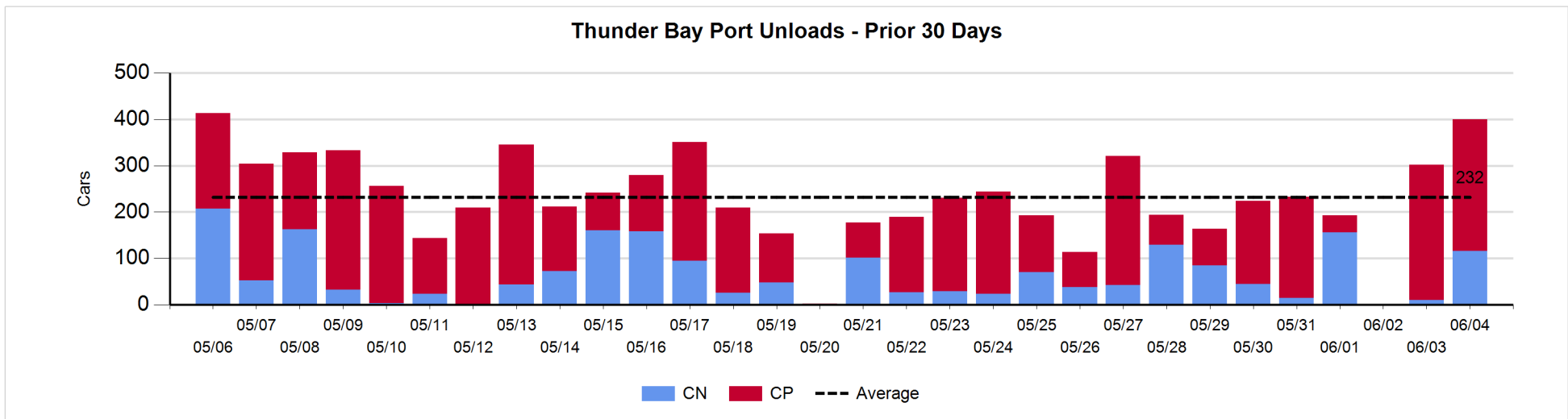
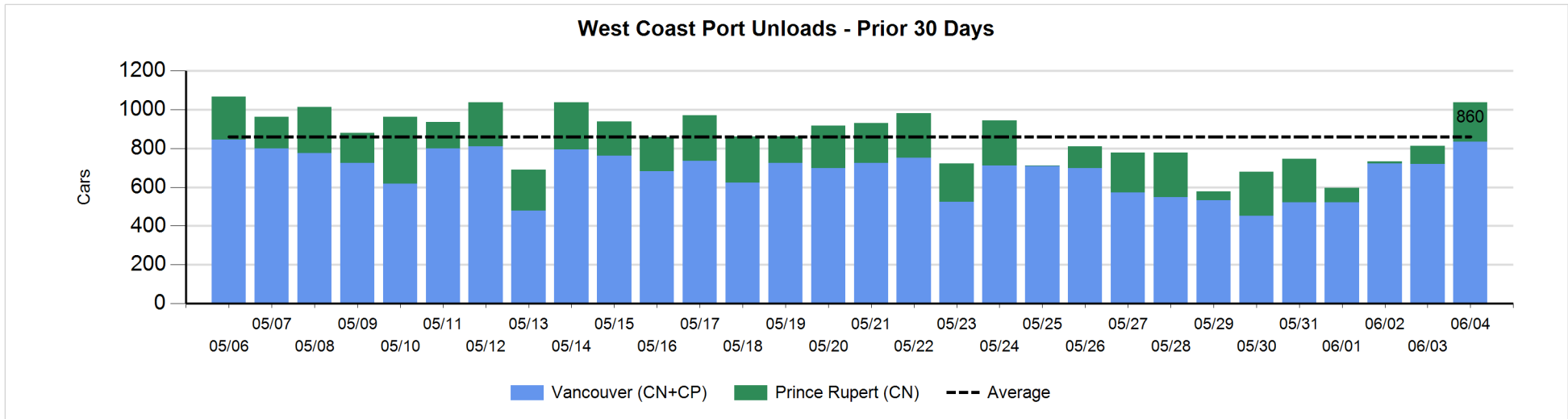
Change in Loads Not Moving 48 Hours or More - 6/4/2019

	E Canada	Prince Rupert	Thunder Bay	USA/MEX	Vancouver	Total
CN						
Origin		76			-74	2
Enroute	-28	0	0	15	-10	-23
Destination	-2	2	-45	-7	17	-35
	-30	78	-45	8	-67	-56
CP						
Origin	0		0		-4	-4
Enroute	-22		1	-4	-33	-58
Destination	28		19		-83	-36
	6		20	-4	-120	-98
US Rail / Short Line						
Origin						
Enroute				0		0
Destination	0			-7	-13	-20
	0			-7	-13	-20



Port Unloads - 6/4/2019

	Prince Rupert	Vancouver	West Coast Total	Thunder Bay	Total
CN	204	377	581	116	697
CP		457	457	284	741
	204	834	1,038	400	1,438



Port Terminal Status

Vancouver

Daily Activity for 6/4/2019

	Cars Arrived	Cars Received in Interchange	Cars Delivered in Interchange	Cars Placed for Unloading	Loads on Wheels at Destination As of 6/4/2019
CN	195	9	9	379	449
CP	749		12	464	891
SRY		12		24	49

Port Unloads

	06/04	06/03	Week To Date	Last Week
CN	377	248	625	1,083
CP	457	470	927	2,788
SRY	23	24	47	63

Age Profile of Loaded Cars Waiting Placement for Unloading

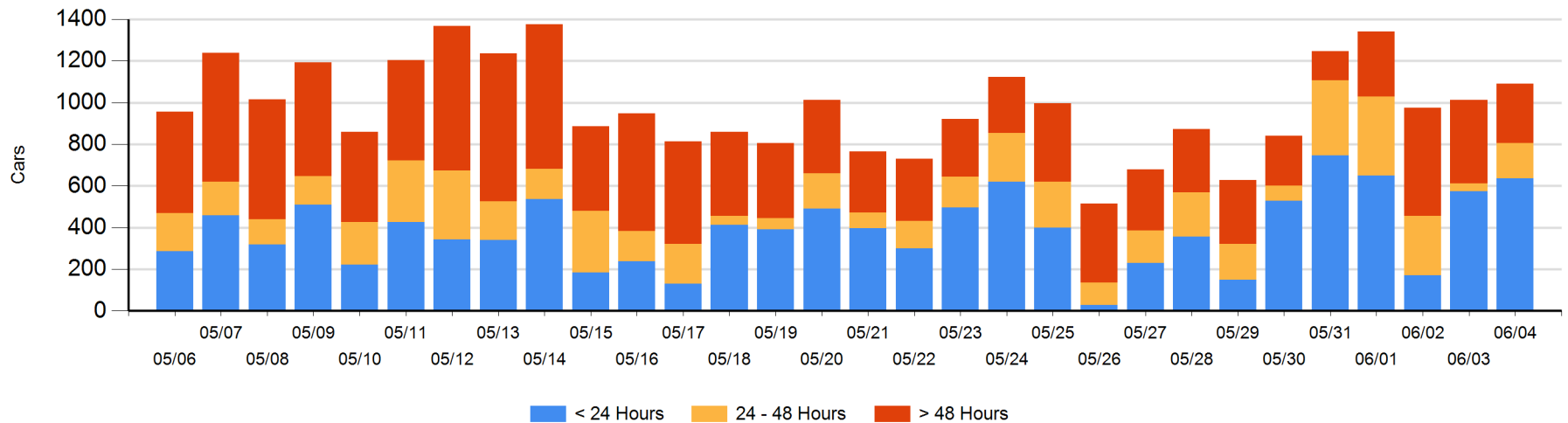
Today

	< 24 Hrs	24 - 48 Hrs	> 48-72 Hrs	> 72 Hrs	Total On Hand
CN	195	80	3	7	285
CP	441	90	35	240	806
SRY					0

Change in Last 24 Hours

	< 24 Hrs	24-48 Hrs	48 - 72 Hrs	> 72 Hrs
CN	-161	77	3	0
CP	224	53	25	-143
SRY				

Loaded Cars on Hand Vancouver Waiting for Placement - Last 30 Days All Railways



Port Terminal Status

Prince Rupert

Daily Activity for 6/4/2019

	Cars Arrived	Cars Received in Interchange	Cars Delivered in Interchange	Cars Placed for Unloading	Loads on Wheels at Destination As of 6/4/2019
CN	301			301	131

Port Unloads

	06/04	06/03	Week To Date	Last Week
CN	204	95	299	1,016

Age Profile of Loaded Cars Waiting Placement for Unloading

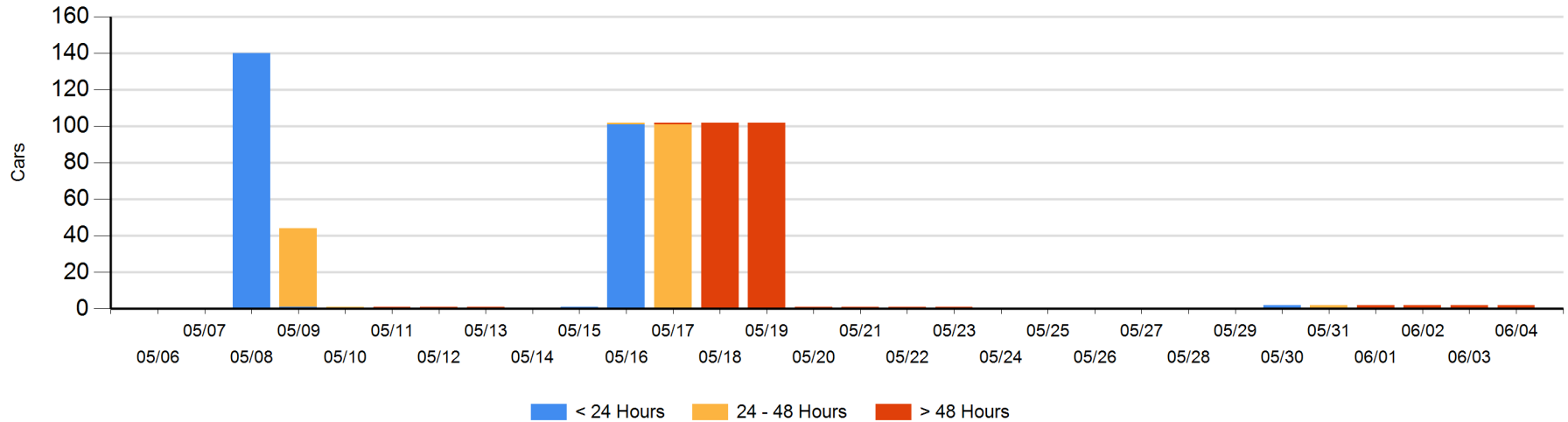
Today

	< 24 Hrs	24 - 48 Hrs	> 48-72 Hrs	> 72 Hrs	Total On Hand
CN				2	2

Change in Last 24 Hours

	< 24 Hrs	24-48 Hrs	48 - 72 Hrs	> 72 Hrs
CN				0

Loaded Cars on Hand Prince Rupert Waiting for Placement - Last 30 Days All Railways



Port Terminal Status

Thunder Bay

Daily Activity for 6/4/2019

	Cars Arrived	Cars Received in Interchange	Cars Delivered in Interchange	Cars Placed for Unloading	Loads on Wheels at Destination As of 6/4/2019
CN	98			53	233
CP	28			257	197

Port Unloads

	06/04	06/03	Week To Date	Last Week
CN	116	10	126	473
CP	284	292	576	857

Age Profile of Loaded Cars Waiting Placement for Unloading

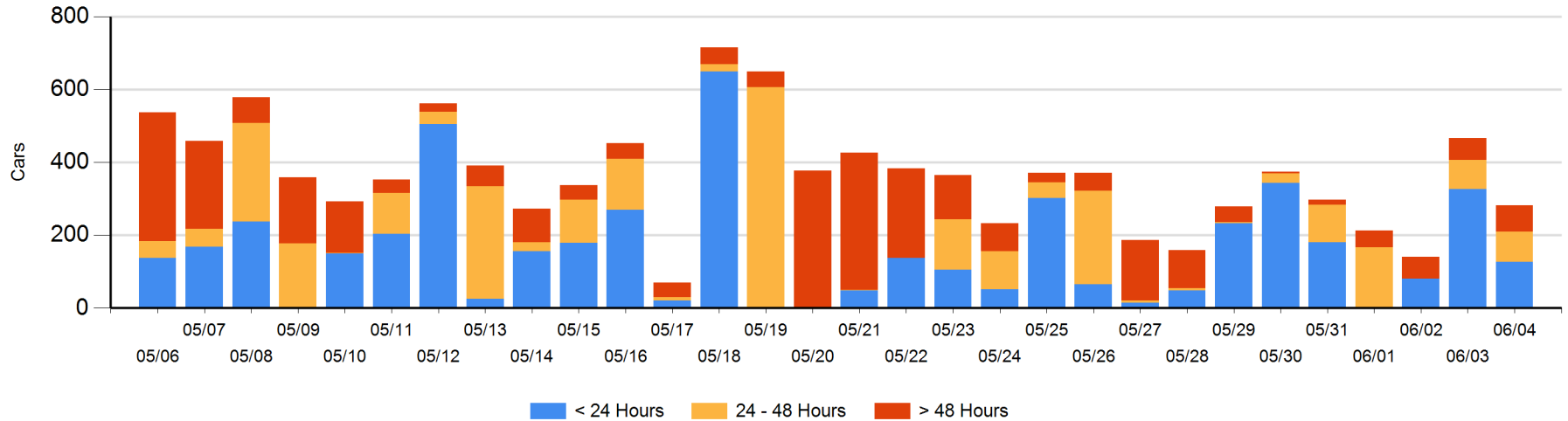
Today

	< 24 Hrs	24 - 48 Hrs	> 48-72 Hrs	> 72 Hrs	Total On Hand
CN	98				98
CP	28	84	14	58	184

Change in Last 24 Hours

	< 24 Hrs	24-48 Hrs	48 - 72 Hrs	> 72 Hrs
CN	45			
CP	-246	4	14	-1

Loaded Cars on Hand Thunder Bay Waiting for Placement - Last 30 Days All Railways



Measurement Definitions

Loads on Wheels	<p>Count of loaded rail cars including all rail cars that have been released loaded at origin and have not been reported by the railway as unloaded at destination.</p> <p>Counts include all rail cars (hopper cars and boxcars) moving within a pipeline.</p>
Loads Not Moving	<p>Loaded rail cars for which the railways have not reported a movement event for 48 hours or more whether the rail car is at origin, enroute or at destination.</p>
Port Unloads	<p>Count of rail cars reported by railways as unloaded at the western port destinations of Vancouver, Prince Rupert and Thunder Bay.</p> <p>Unload counts include all rail cars (hopper cars and boxcars) unloaded by all receivers including major port terminals, transloaders and other receivers.</p>
Cars Arrived	<p>Count of rail cars reported as arrived at the destination railway terminal.</p>
Cars Received in Interchange	<p>Count of rail cars received in interchange by each railway within a destination railway terminal. Interchange activity is tracked for the Vancouver and Thunder Bay pipelines as applicable.</p>
Cars Delivered in Interchange	<p>Count of rail cars delivered in interchange by each railway within a destination railway terminal. Interchange activity is tracked for the Vancouver and Thunder Bay pipelines as applicable.</p>
Cars Placed for Unloading	<p>Count of rail cars reported by the railways as placed loaded at the receiver's facility for unloading.</p>
Loads on Wheels at Destination	<p>Count of rail cars that remain under load within the destination railway terminal including rail cars that have been reported as placed for unloading but not yet reported as unloaded.</p>
Waiting Placement for Unloading	<p>Count of rail cars that have been reported as arrived at the destination railway terminal but not reported as placed for unloading by the railway.</p> <p>For the Ports of Vancouver, Prince Rupert and Thunder Bay the count of rail cars waiting placement for unloading is categorized by age – i.e. the elapsed time from arrival at destination to the current report date.</p>