

SPEED READ

- Loads on wheels increased overnight, marking an increase in both CN and CP volumes. On a net basis, volumes increased due to higher volumes in the Vancouver, Prince Rupert and Thunder Bay corridors offset by reduced volumes in the E. Canada and USA/MEX corridors.
- Network fluidity improved overnight, led by a decline in idle car counts on both CN and CP by 39% (-201) and 43% (-471), respectively. The total count of cars for 4+ days on both railways increased significantly by 71% (+169) overnight - presently at 407 cars.
- One day in Week 46 unloads now ahead of prior week's performance by more than 250 unloads, reflecting improved week over week performance across all three major ports - Vancouver, Thunder Bay and Prince Rupert.

Loads on Wheels

- Loads on wheels increased 5% (+410) overnight, due to higher traffic on both CN and CP - combined total at 9,098 and 7% above the trailing 30-day average.
- On a net basis, the increase in loads on wheels reflects higher volumes in the Vancouver, Prince Rupert and Thunder Bay corridors offset by reduced volumes in the E. Canada and USA/MEX corridors.
- CN volumes gained slightly by (+11) overnight and have now increased for the third consecutive day, with higher volumes in the Prince Rupert and Vancouver corridors offset by lower volumes in the Thunder Bay, E. Canada and USA/MEX corridors. System wide CN loads on wheels now at 4,540 and 11% above the trailing 30-day average.
- CP volumes increased significantly by 11% (+428) overnight, driven by an increase in traffic in the Vancouver and Thunder Bay corridors offset by a decline in traffic in the USA/MEX and E. Canada corridors. CP system wide loads on wheels currently at 4,427 and 5% above the trailing 30-day average.
- Vancouver currently at 5,212, gained 5% (+269) overnight, now 4% above the trailing 30-day average.
- The Prince Rupert pipeline currently at 1,260, gained significantly by 17% (+182) overnight, and 6% above the trailing 30-day average.
- Thunder Bay volumes increased 9% (+128) overnight - currently at 1,561 and 24% above the trailing 30-day average, with 80% of traffic moving on CP.

Hopper Car Rationing

- CN rationed no hopper cars in week 44.

Loads Not Moving

- **The count of cars not moving for 48+ hours fell 42% (-672) overnight, marking lower counts on both CN and CP. Idle car counts currently at 933 and 25% below the trailing 30-day average.**
- CN
 - **The count of idle cars for 48+ hours fell 39% (-201) overnight - currently at 316 cars.**
 - The number of cars idle for 4+ days increased significantly by 64% (+87) overnight and have now increased for the fourth consecutive day - currently at 222 cars.
 - The count of cars not moving for 7+ days increased 10% (+2) overnight - presently at 22 cars.
 - Vancouver represents 47% of all idle cars.
 - In total 42% of all idle cars are dwelling at origin locations.
- CP
 - **CP idle car counts for 48+ hours declined 43% (-471) overnight - now at 617 cars.**
 - The number of cars idle for 4+ days increased significantly by 80% (+82) overnight - presently at 185 cars.

- The number of cars idle for 7+ days fell significantly by 57% (-27) overnight - currently at 20 cars.
- Vancouver accounts for 74% of all idle cars.
- In total 12% of all idle cars are dwelling at origin locations.

Port Performance

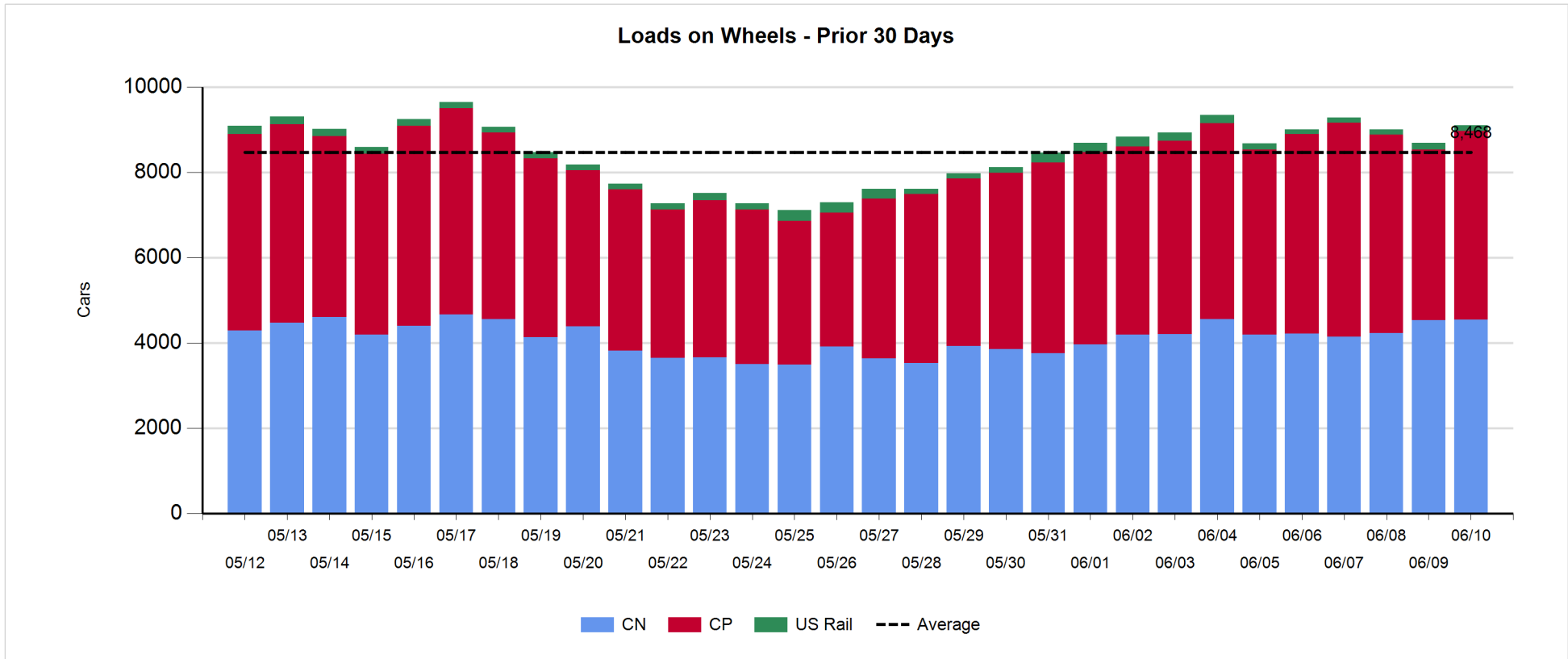
- CN and CP reported a total of 1,411 cars unloaded at the three major ports, now 31% above the trailing 30-day average. One day in Week 46 unloads now ahead of last week's pace by more than 250 unloads, reflecting higher unloads across all three major ports - Vancouver, Thunder Bay and Prince Rupert.
- Vancouver
 - 835 unloads reported by CN and CP at the Port of Vancouver; CN - 344 and CP - 491. One day in Week 46 unloads are tracking ahead of last week's performance by 100 unloads.
 - There are 1,100 cars on site at Vancouver with more than 600 cars arriving at the port in the last 24 hours.
 - CN and CP have more than 550 cars in British Columbia en route to Vancouver, with 350 cars at Kamloops and west, and 87% of traffic moving on CP.
- Prince Rupert
 - Prince Rupert reported 230 unloads, now ahead of last week's unloads after one day by fewer than 150 unloads.
 - Loads on wheels now above 1,000 cars - currently at 1,260 cars.
 - There are 200 cars west of Jasper en route to Prince Rupert.
 - There are 200 cars on site at Prince Rupert with more than 300 cars arriving at the port in the last 24 hours.
- Thunder Bay
 - 346 unloads were reported at Thunder Bay yesterday. One day in Week 46 unloads are tracking ahead of last week's pace by 50 unloads.
 - There are 850 cars on site at Thunder Bay with fewer than 550 cars arriving at the port in the prior 24 hours.
 - There are zero cars enroute to Thunder Bay from Winnipeg and east.

Daily Loads on Wheels - 6/10/2019

	E Canada	Prince Rupert	Thunder Bay	USA/MEX	Vancouver	Total
CN	437	1,260	320	221	2,302	4,540
CP	114		1,241	180	2,892	4,427
Short Line	11				18	29
US Rail				102		102
	562	1,260	1,561	503	5,212	9,098

Change in Loads on Wheels - Prior 24 Hours

	E Canada	Prince Rupert	Thunder Bay	USA/MEX	Vancouver	Total
CN	-93	182	-100	-4	26	11
CP	-1		228	-44	245	428
Short Line	1				-2	-1
US Rail				-28		-28
	-93	182	128	-76	269	410

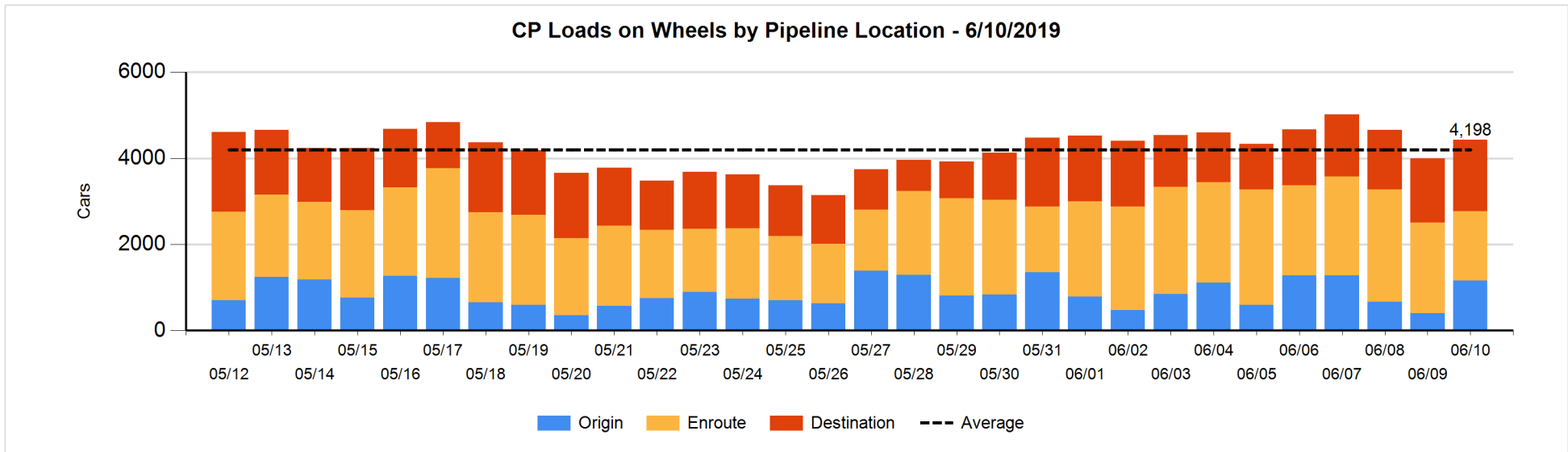
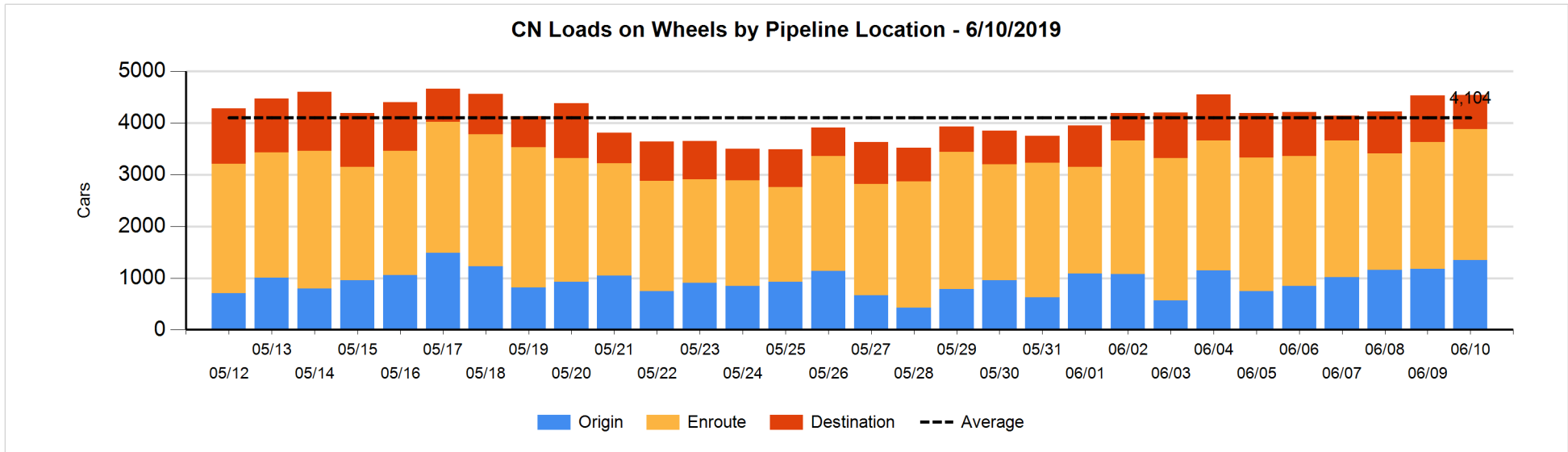


Daily Loads on Wheels By Pipeline Location - 6/10/2019

	E Canada	Prince Rupert	Thunder Bay	USA/MEX	Vancouver	Total
CN						
Origin		715	49	5	576	1,345
Enroute	360	348	100	205	1,518	2,531
Destination	77	197	171	11	208	664
	437	1,260	320	221	2,302	4,540
CP						
Origin			437	75	648	1,160
Enroute	43		124	68	1,369	1,604
Destination	71		680	37	875	1,663
	114		1,241	180	2,892	4,427
US Rail / Short Line						
Origin						
Enroute				64		64
Destination	11			38	18	67
	11			102	18	131

Change in Daily Loads on Wheels By Pipeline Location - Prior 24 Hours

	E Canada	Prince Rupert	Thunder Bay	USA/MEX	Vancouver	Total
CN						
Origin	-104	312	49	5	-92	170
Enroute	110	-239	-102	8	295	72
Destination	-99	109	-47	-17	-177	-231
	-93	182	-100	-4	26	11
CP						
Origin			410	42	306	758
Enroute	-32		-415	-20	-28	-495
Destination	31		233	-66	-33	165
	-1		228	-44	245	428
US Rail / Short Line						
Origin						
Enroute				2		2
Destination	1			-30	-2	-31
	1			-28	-2	-29

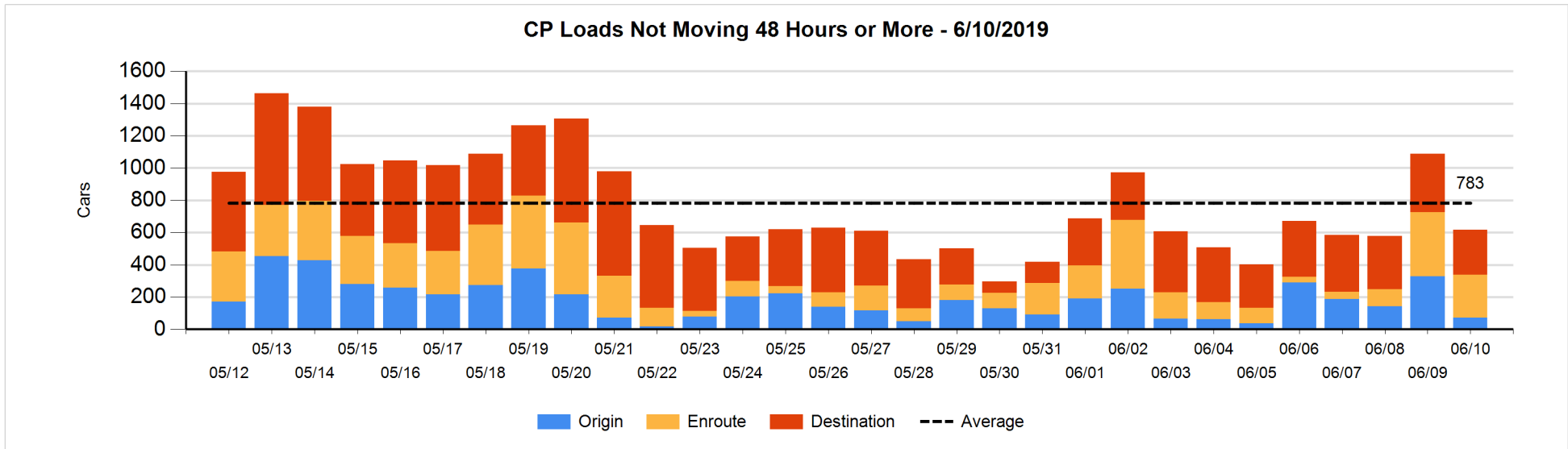
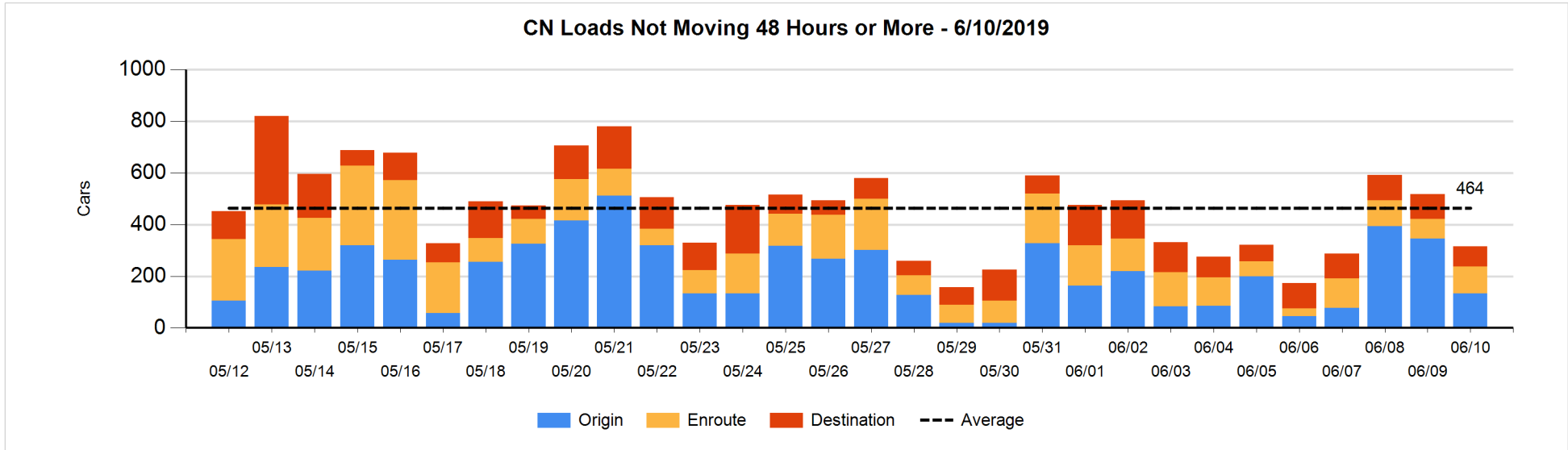


Loads Not Moving 48 Hours or More - 6/10/2019

	E Canada	Prince Rupert	Thunder Bay	USA/MEX	Vancouver	Total
CN						
Origin		18			116	134
Enroute	34	2		44	24	104
Destination	63		1	6	8	78
	97	20	1	50	148	316
CP						
Origin			12		60	72
Enroute	12		9	26	220	267
Destination	1		93	6	178	278
	13		114	32	458	617
US Rail / Short Line						
Origin						
Enroute				31		31
Destination	9			16	13	38
	9			47	13	69

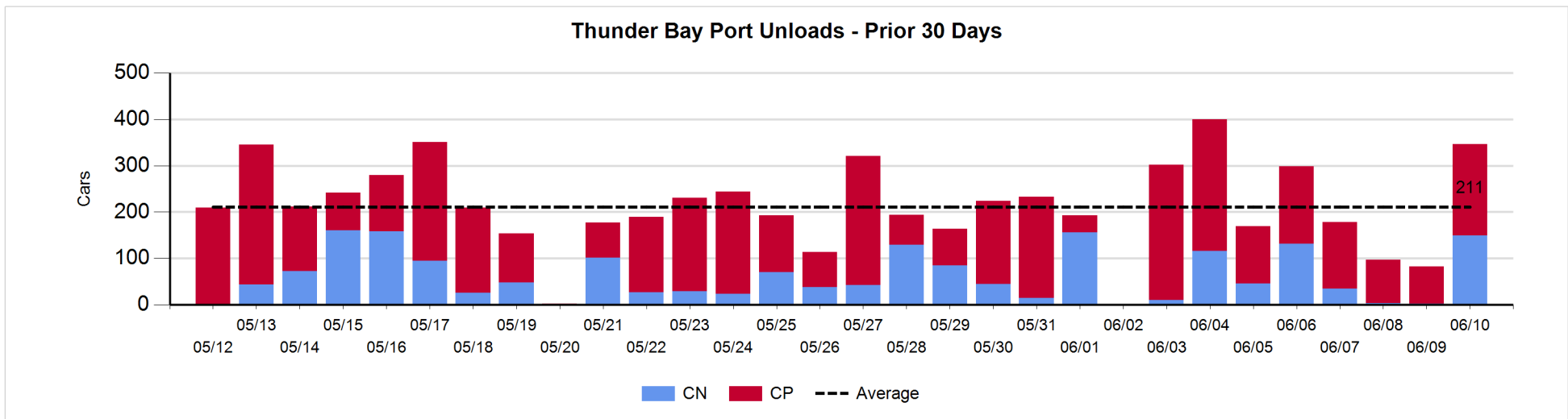
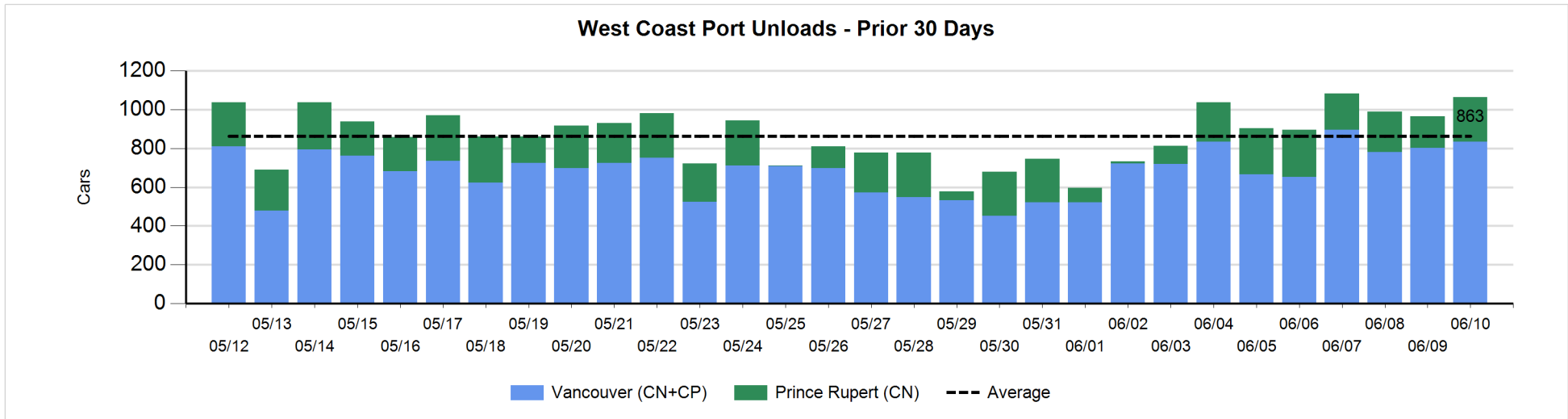
Change in Loads Not Moving 48 Hours or More - 6/10/2019

	E Canada	Prince Rupert	Thunder Bay	USA/MEX	Vancouver	Total
CN						
Origin		-50			-162	-212
Enroute	28	-2		5	-2	29
Destination	16		-14	-21	1	-18
	44	-52	-14	-16	-163	-201
CP						
Origin			-15	-10	-231	-256
Enroute	4		0	5	-141	-132
Destination	0		-9	0	-74	-83
	4		-24	-5	-446	-471
US Rail / Short Line						
Origin						
Enroute				1		1
Destination	-1			-13	0	-14
	-1			-12	0	-13



Port Unloads - 6/10/2019

	Prince Rupert	Vancouver	West Coast Total	Thunder Bay	Total
CN	230	344	574	149	723
CP		491	491	197	688
	230	835	1,065	346	1,411



Port Terminal Status

Vancouver

Daily Activity for 6/10/2019

	Cars Arrived	Cars Received in Interchange	Cars Delivered in Interchange	Cars Placed for Unloading	Loads on Wheels at Destination As of 6/10/2019
CN	211		13	341	208
CP	413	13		435	875
SRY	1			2	18

Port Unloads

	06/10	06/09	Week To Date	Last Week
CN	344	340	344	2,064
CP	491	462	491	3,286
SRY	2		2	93

Age Profile of Loaded Cars Waiting Placement for Unloading

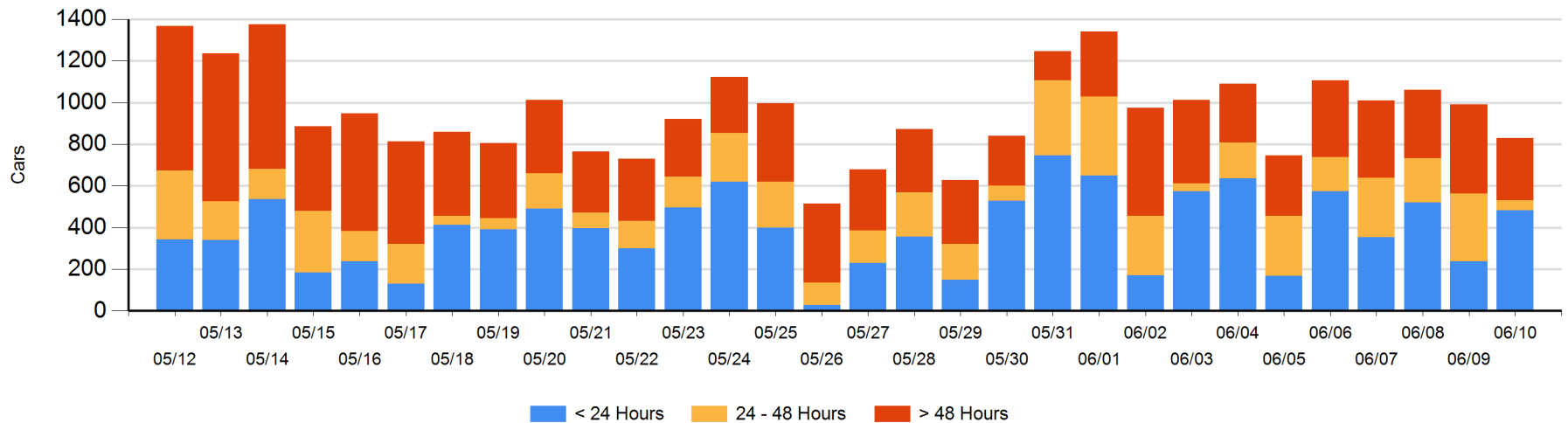
Today

	< 24 Hrs	24 - 48 Hrs	> 48-72 Hrs	> 72 Hrs	Total On Hand
CN	71	20	98	19	208
CP	413	26	36	148	623
SRY					0

Change in Last 24 Hours

	< 24 Hrs	24-48 Hrs	48 - 72 Hrs	> 72 Hrs
CN	67	-182	57	-4
CP	180	-99	-129	-50
SRY				

Loaded Cars on Hand Vancouver Waiting for Placement - Last 30 Days All Railways



Port Terminal Status

Prince Rupert

Daily Activity for 6/10/2019

	Cars Arrived	Cars Received in Interchange	Cars Delivered in Interchange	Cars Placed for Unloading	Loads on Wheels at Destination As of 6/10/2019
CN	315			315	197

Port Unloads

	06/10	06/09	Week To Date	Last Week
CN	230	163	230	1,337

Age Profile of Loaded Cars Waiting Placement for Unloading

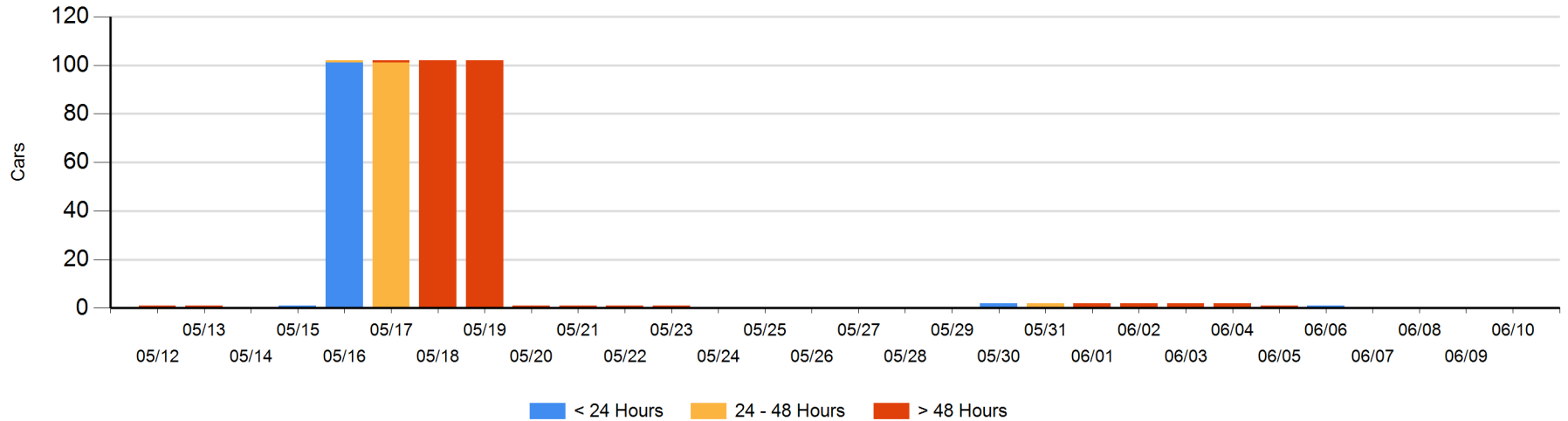
Today

	< 24 Hrs	24 - 48 Hrs	> 48-72 Hrs	> 72 Hrs	Total On Hand
CN					0

Change in Last 24 Hours

	< 24 Hrs	24-48 Hrs	48 - 72 Hrs	> 72 Hrs
CN				

Loaded Cars on Hand Prince Rupert Waiting for Placement - Last 30 Days All Railways



Port Terminal Status

Thunder Bay

Daily Activity for 6/10/2019

	Cars Arrived	Cars Received in Interchange	Cars Delivered in Interchange	Cars Placed for Unloading	Loads on Wheels at Destination As of 6/10/2019
CN	102				171
CP	430			45	680

Port Unloads

	06/10	06/09	Week To Date	Last Week
CN	149	2	149	345
CP	197	81	197	1,182

Age Profile of Loaded Cars Waiting Placement for Unloading

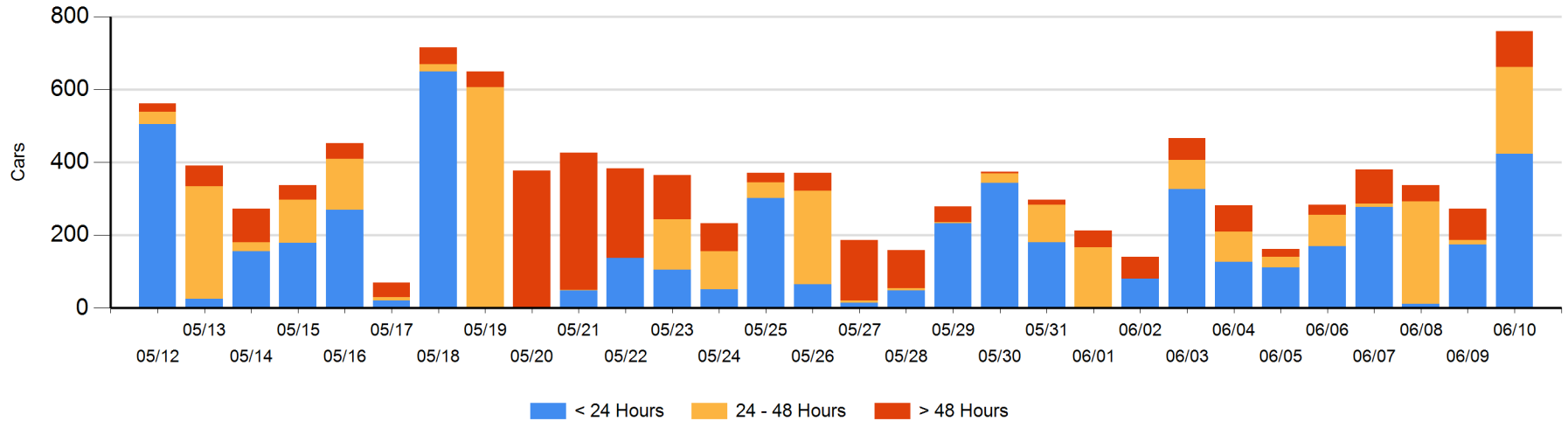
Today

	< 24 Hrs	24 - 48 Hrs	> 48-72 Hrs	> 72 Hrs	Total On Hand
CN	102				102
CP	322	238	11	87	658

Change in Last 24 Hours

	< 24 Hrs	24-48 Hrs	48 - 72 Hrs	> 72 Hrs
CN	102			
CP	147	227	-46	57

Loaded Cars on Hand Thunder Bay Waiting for Placement - Last 30 Days All Railways



Measurement Definitions

Loads on Wheels	<p>Count of loaded rail cars including all rail cars that have been released loaded at origin and have not been reported by the railway as unloaded at destination.</p> <p>Counts include all rail cars (hopper cars and boxcars) moving within a pipeline.</p>
Loads Not Moving	<p>Loaded rail cars for which the railways have not reported a movement event for 48 hours or more whether the rail car is at origin, enroute or at destination.</p>
Port Unloads	<p>Count of rail cars reported by railways as unloaded at the western port destinations of Vancouver, Prince Rupert and Thunder Bay.</p> <p>Unload counts include all rail cars (hopper cars and boxcars) unloaded by all receivers including major port terminals, transloaders and other receivers.</p>
Cars Arrived	<p>Count of rail cars reported as arrived at the destination railway terminal.</p>
Cars Received in Interchange	<p>Count of rail cars received in interchange by each railway within a destination railway terminal. Interchange activity is tracked for the Vancouver and Thunder Bay pipelines as applicable.</p>
Cars Delivered in Interchange	<p>Count of rail cars delivered in interchange by each railway within a destination railway terminal. Interchange activity is tracked for the Vancouver and Thunder Bay pipelines as applicable.</p>
Cars Placed for Unloading	<p>Count of rail cars reported by the railways as placed loaded at the receiver's facility for unloading.</p>
Loads on Wheels at Destination	<p>Count of rail cars that remain under load within the destination railway terminal including rail cars that have been reported as placed for unloading but not yet reported as unloaded.</p>
Waiting Placement for Unloading	<p>Count of rail cars that have been reported as arrived at the destination railway terminal but not reported as placed for unloading by the railway.</p> <p>For the Ports of Vancouver, Prince Rupert and Thunder Bay the count of rail cars waiting placement for unloading is categorized by age – i.e. the elapsed time from arrival at destination to the current report date.</p>