

SPEED READ

- Loads on wheels fell marginally overnight, marking lower CP volumes offset by an increase in CN volumes. On a net basis, volumes fell due to lower traffic in the Thunder Bay, Vancouver and USA/MEX corridors offset by higher traffic in the Prince Rupert and E. Canada corridors.
- Network fluidity improved overnight, led by a decline in idle car counts on CP by 21% (-109) offset by a rise in idle car counts on CN by 18% (+97). The total count of cars for 4+ days on both railways increased significantly by 52% (+110) overnight and have now increased for the third consecutive day - currently at 322 cars.
- One day in Week 47 unloads now behind prior week's performance by 50 unloads, marking lower unloads at Thunder Bay and Vancouver offset by improved week over week performance at Prince Rupert.

Loads on Wheels

- Loads on wheels fell marginally by 1% (-115) overnight, due to lower traffic on CP offset by higher traffic on CN - combined total at 8,234 and 1% below the trailing 30-day average.
- On a net basis, the decline in loads on wheels reflects lower traffic in the Thunder Bay, Vancouver and USA/MEX corridors offset by higher traffic in the Prince Rupert and E. Canada corridors.
- CN volumes increased 3% (+153) overnight and have now increased for the fourth consecutive day, with higher traffic in the Thunder Bay, Prince Rupert and Vancouver corridors offset by reduced volumes in the USA/MEX and E. Canada corridors. System wide CN loads on wheels currently at 4,985 and 19% above the trailing 30-day average.
- CP volumes fell 10% (-334) overnight, driven by a decline in traffic across all corridors other than E. Canada. CP system wide loads on wheels now at 3,071, the lowest seen in the last 30 days, and 24% below the trailing 30-day average.
- Vancouver now at 4,583, declined 2% (-89) overnight, now 7% below the trailing 30-day average.
- The Prince Rupert pipeline now at 1,351, gained 5% (+70) overnight, and 14% above the trailing 30-day average.
- Thunder Bay volumes decreased 7% (-102) overnight - now at 1,441 and 16% above the trailing 30-day average, with 64% of traffic moving on CP.

Hopper Car Rationing

- CN rationed 25 hopper cars in week 45 - none yet reported for week 46.

Loads Not Moving

- **The count of cars not moving for 48+ hours declined marginally by 1% (-12) overnight, marking lower counts on CP offset by higher counts on CN. Idle car counts currently at 1,039 and 1% below the trailing 30-day average.**
- CN
 - **The count of idle cars for 48+ hours gained for the fourth consecutive day, up 18% (+97) overnight - now at 628 cars.**
 - The number of cars idle for 4+ days gained 14% (+9) overnight and have now increased for the third consecutive day - now at 75 cars.
 - The count of cars not moving for 7+ days declined 15% (-2) overnight - currently at 11 cars, the lowest seen in the last 30 days.
 - Vancouver represents 60% of all idle cars.
 - In total 39% of all idle cars are dwelling at origin locations.
- CP
 - **CP idle car counts for 48+ hours declined 21% (-109) overnight - now at 411 cars.**

- The number of cars idle for 4+ days gained significantly by 69% (+101) overnight - now at 247 cars.
- The number of cars idle for 7+ days increased 10% (+4) overnight and have now increased for the fifth consecutive day - currently at 45 cars.
- Vancouver accounts for 74% of all idle cars.
- In total 22% of all idle cars are dwelling at origin locations.

Port Performance

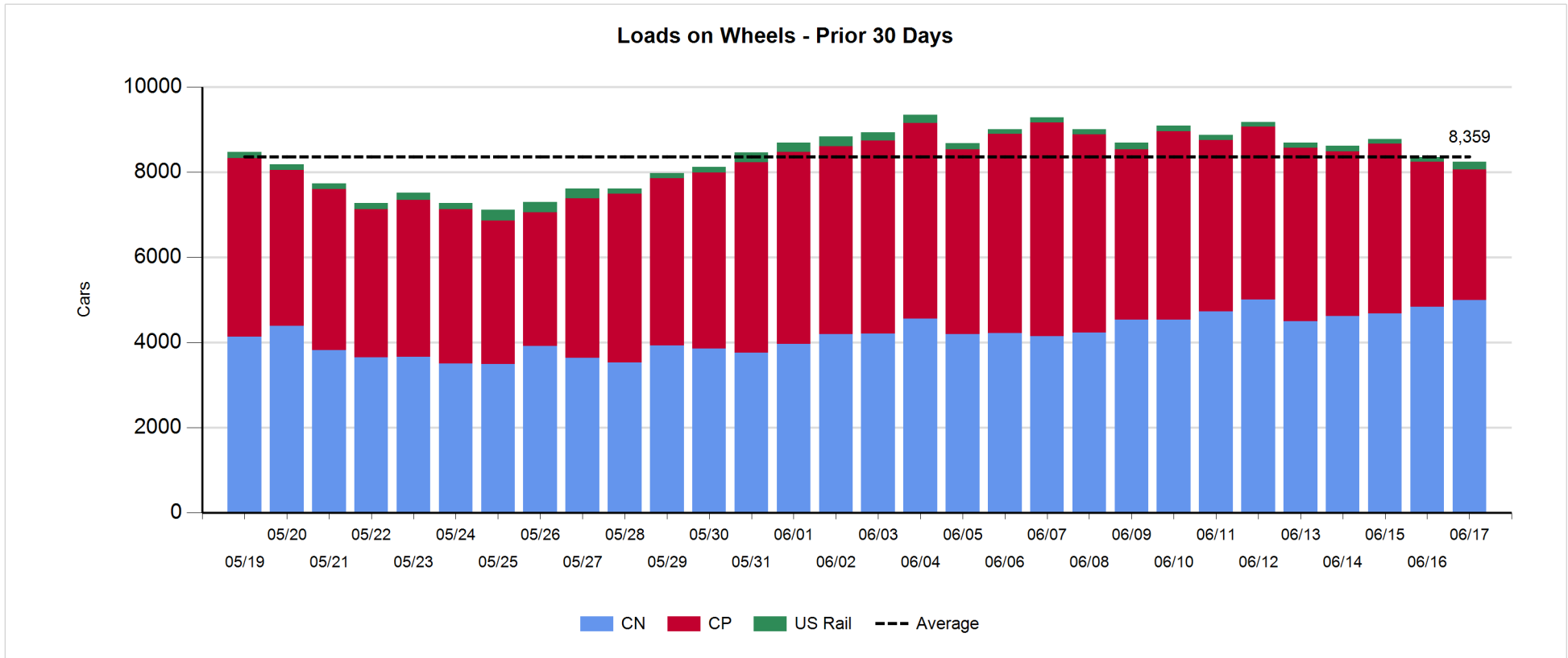
- CN and CP reported a total of 1,352 cars unloaded at the three major ports, now 27% above the trailing 30-day average. One day in Week 47 unloads now behind last week's pace by 50 unloads, marking lower unloads at Thunder Bay and Vancouver offset by higher unloads at Prince Rupert.
- Vancouver
 - 808 unloads reported by CN and CP at the Port of Vancouver; CN - 276 and CP - 532. One day in Week 47 unloads are tracking behind last week's performance by 13 unloads.
 - There are 1,100 cars on site at Vancouver with more than 500 cars arriving at the port in the last 24 hours.
 - CN and CP have 1,400 cars in British Columbia en route to Vancouver, with 950 cars at Kamloops and west, and 58% of traffic moving on CN.
- Prince Rupert
 - Prince Rupert reported 234 unloads, now ahead of last week's unloads after one day by 4 unloads.
 - Loads on wheels now above 1,000 cars - now at 1,351 cars.
 - There are 450 cars west of Jasper en route to Prince Rupert.
 - There are less than 250 cars on site at Prince Rupert with 200 cars arriving at the port in the last 24 hours.
- Thunder Bay
 - 310 unloads were reported at Thunder Bay yesterday. One day in Week 47 unloads are tracking behind last week's pace by less than 50 unloads.
 - There are 400 cars on site at Thunder Bay with 200 cars arriving at the port in the prior 24 hours.
 - There are more than 300 cars en route to Thunder Bay from Winnipeg and east.

Daily Loads on Wheels - 6/17/2019

	E Canada	Prince Rupert	Thunder Bay	USA/MEX	Vancouver	Total
CN	514	1,351	525	74	2,521	4,985
CP	50		916	60	2,045	3,071
Short Line	24				17	41
US Rail				137		137
	588	1,351	1,441	271	4,583	8,234

Change in Loads on Wheels - Prior 24 Hours

	E Canada	Prince Rupert	Thunder Bay	USA/MEX	Vancouver	Total
CN	-16	70	84	-50	65	153
CP	25		-186	-9	-164	-334
Short Line	22				10	32
US Rail				34		34
	31	70	-102	-25	-89	-115

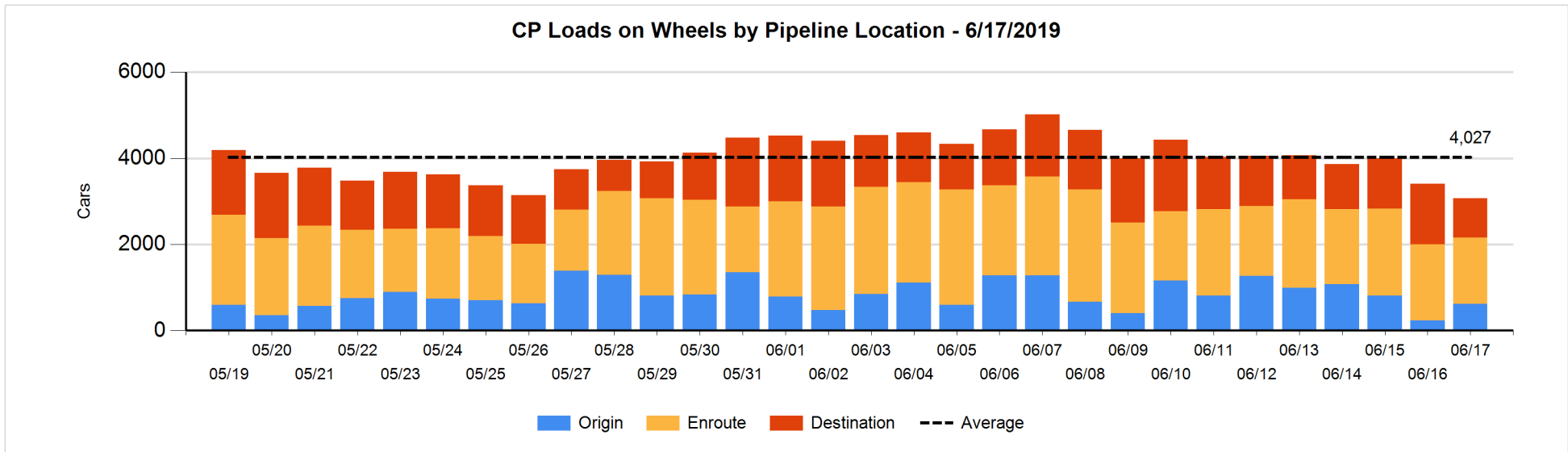
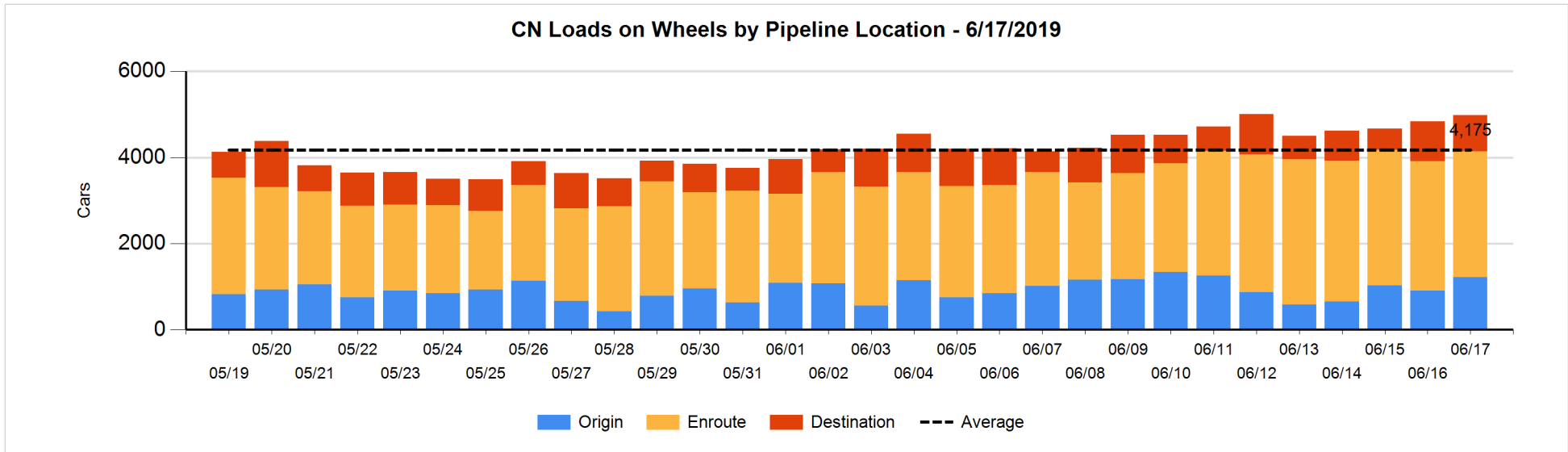


Daily Loads on Wheels By Pipeline Location - 6/17/2019

	E Canada	Prince Rupert	Thunder Bay	USA/MEX	Vancouver	Total
CN						
Origin		404	275	2	543	1,224
Enroute	481	712	105	59	1,555	2,912
Destination	33	235	145	13	423	849
	514	1,351	525	74	2,521	4,985
CP						
Origin	31		112	2	470	615
Enroute	19		544	58	917	1,538
Destination			260		658	918
	50		916	60	2,045	3,071
US Rail / Short Line						
Origin						
Enroute				50		50
Destination	24			87	17	128
	24			137	17	178

Change in Daily Loads on Wheels By Pipeline Location - Prior 24 Hours

	E Canada	Prince Rupert	Thunder Bay	USA/MEX	Vancouver	Total
CN						
Origin	-124	304	96	2	44	322
Enroute	99	-204	-40	-50	103	-92
Destination	9	-30	28	-2	-82	-77
	-16	70	84	-50	65	153
CP						
Origin	26		0	-33	384	377
Enroute	-1		1	24	-245	-221
Destination			-187		-303	-490
	25		-186	-9	-164	-334
US Rail / Short Line						
Origin						
Enroute				-21		-21
Destination	22			55	10	87
	22			34	10	66

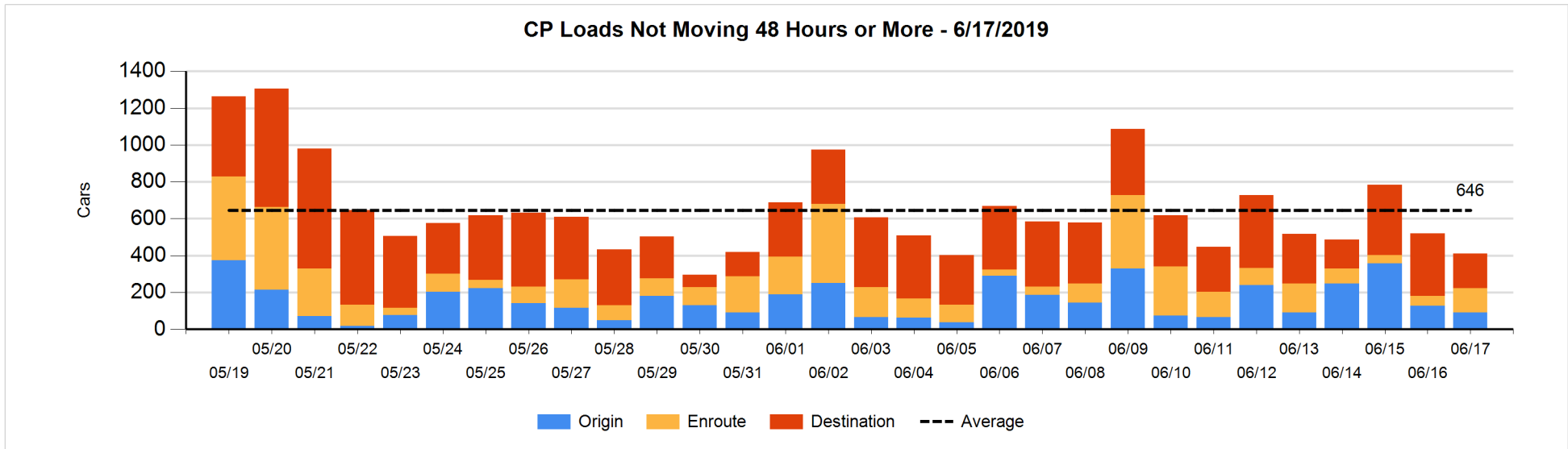
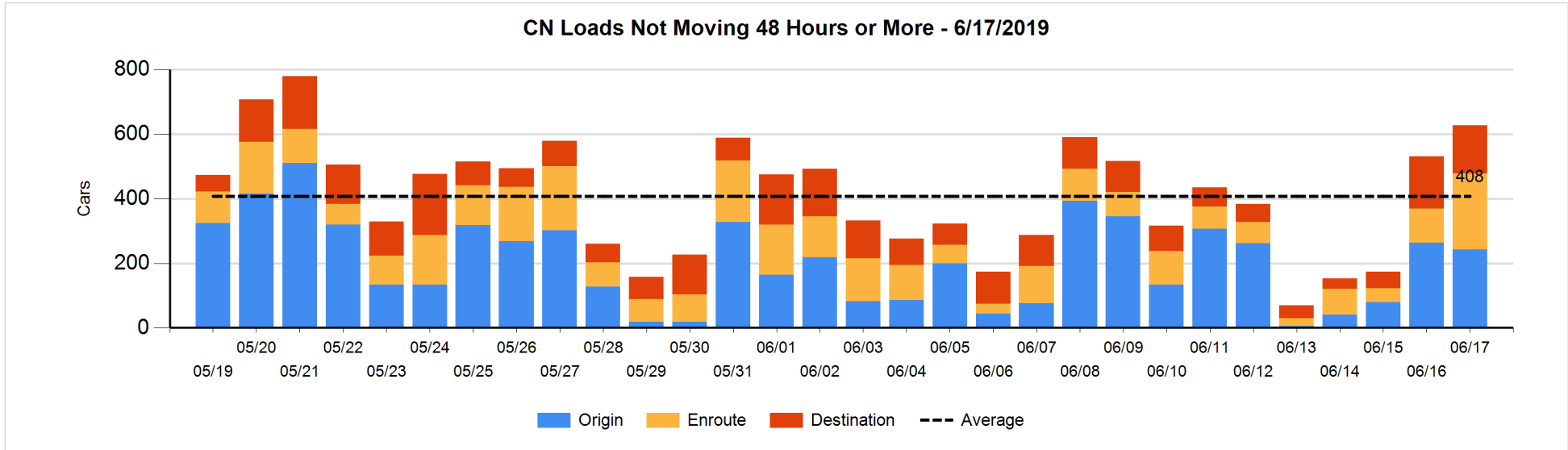


Loads Not Moving 48 Hours or More - 6/17/2019

	E Canada	Prince Rupert	Thunder Bay	USA/MEX	Vancouver	Total
CN						
Origin		1	130		112	243
Enroute	78	4		6	148	236
Destination	20	2	1	12	114	149
	98	7	131	18	374	628
CP						
Origin	5			1	85	91
Enroute	9		62	11	49	131
Destination			20		169	189
	14		82	12	303	411
US Rail / Short Line						
Origin						
Enroute				29		29
Destination	2			21	4	27
	2			50	4	56

Change in Loads Not Moving 48 Hours or More - 6/17/2019

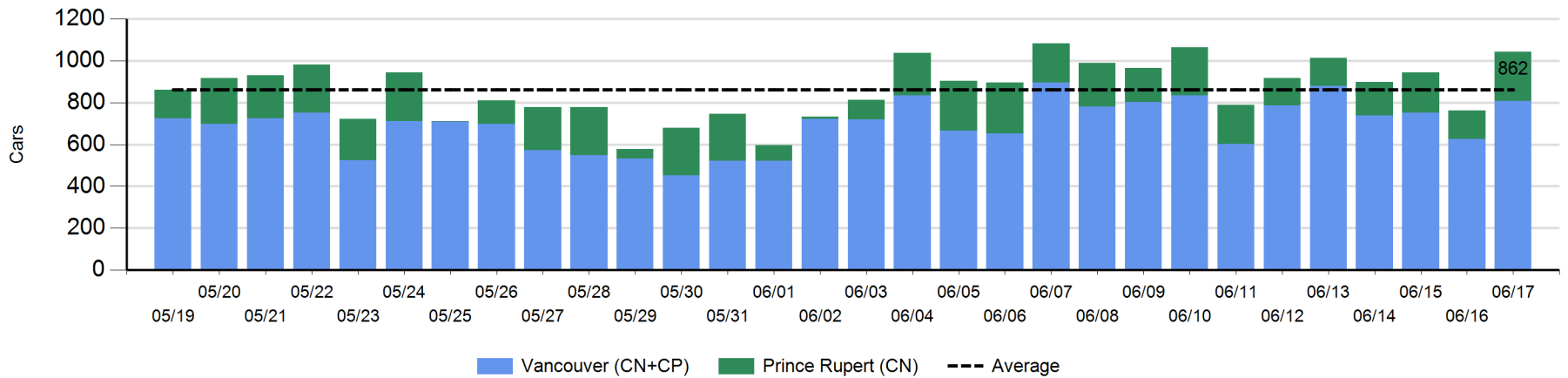
	E Canada	Prince Rupert	Thunder Bay	USA/MEX	Vancouver	Total
CN						
Origin		0	98		-118	-20
Enroute	-4	-2		1	135	130
Destination	4	0	-12	-2	-3	-13
	0	-2	86	-1	14	97
CP						
Origin	0			-34	-1	-35
Enroute	6		51	9	10	76
Destination			-37		-113	-150
	6		14	-25	-104	-109
US Rail / Short Line						
Origin						
Enroute				-6		-6
Destination	0			4	1	5
	0			-2	1	-1



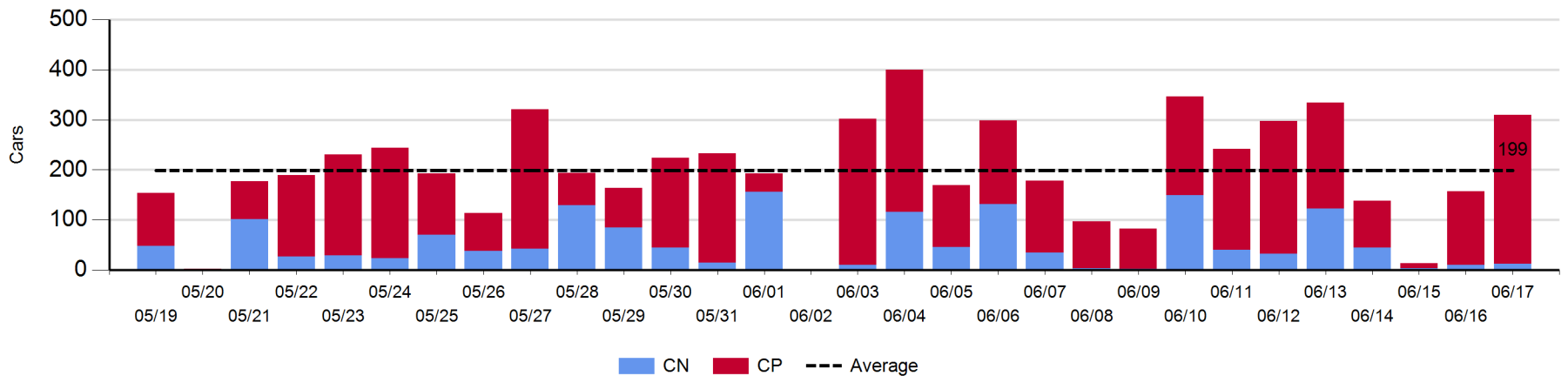
Port Unloads - 6/17/2019

	Prince Rupert	Vancouver	West Coast Total	Thunder Bay	Total
CN	234	276	510	12	522
CP		532	532	298	830
	234	808	1,042	310	1,352

West Coast Port Unloads - Prior 30 Days



Thunder Bay Port Unloads - Prior 30 Days



Port Terminal Status

Vancouver

Daily Activity for 6/17/2019

	Cars Arrived	Cars Received in Interchange	Cars Delivered in Interchange	Cars Placed for Unloading	Loads on Wheels at Destination As of 6/17/2019
CN	267		12	258	423
CP	245		4	581	658
SRY	1	16		16	17

Port Unloads

	06/17	06/16	Week To Date	Last Week
CN	276	147	276	2,106
CP	532	478	532	3,113
SRY	16		16	32

Age Profile of Loaded Cars Waiting Placement for Unloading

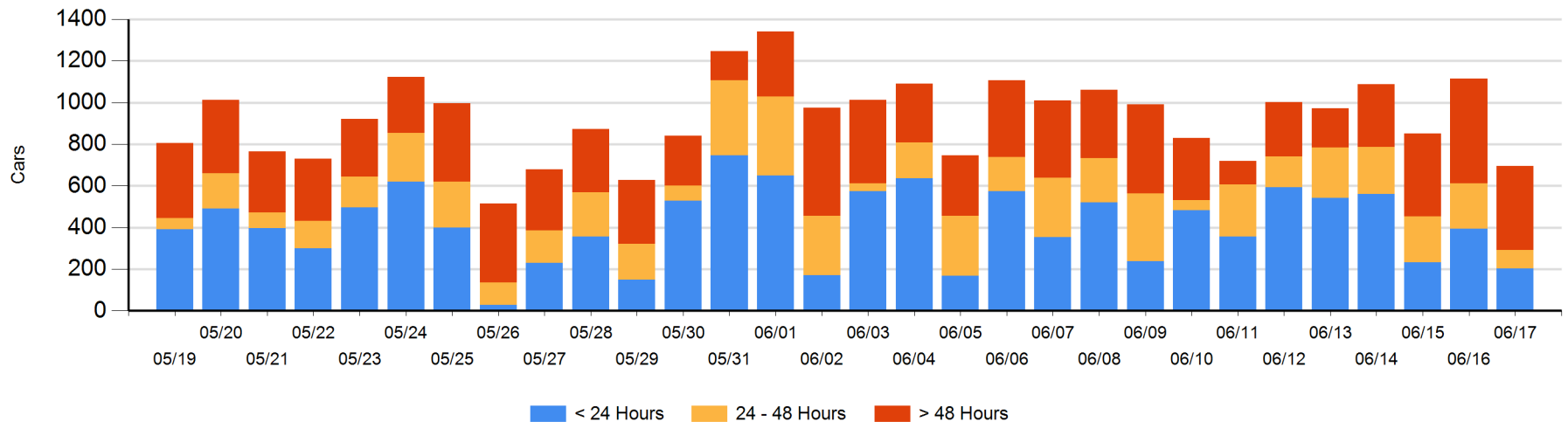
Today

	< 24 Hrs	24 - 48 Hrs	> 48-72 Hrs	> 72 Hrs	Total On Hand
CN	68	38	18	143	267
CP	136	49	56	188	429
SRY					0

Change in Last 24 Hours

	< 24 Hrs	24-48 Hrs	48 - 72 Hrs	> 72 Hrs
CN	-52	11	-100	18
CP	-137	-143	8	-24
SRY				

Loaded Cars on Hand Vancouver Waiting for Placement - Last 30 Days All Railways



Port Terminal Status

Prince Rupert

Daily Activity for 6/17/2019

	Cars Arrived	Cars Received in Interchange	Cars Delivered in Interchange	Cars Placed for Unloading	Loads on Wheels at Destination As of 6/17/2019
CN	204			205	235

Port Unloads

	06/17	06/16	Week To Date	Last Week
CN	234	138	234	1,171

Age Profile of Loaded Cars Waiting Placement for Unloading

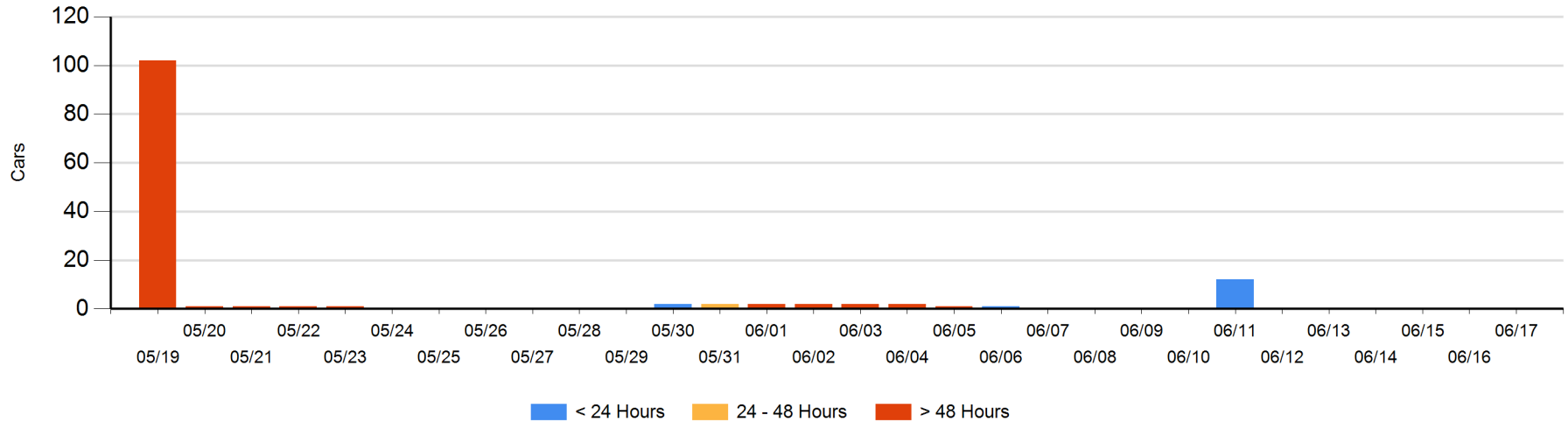
Today

	< 24 Hrs	24 - 48 Hrs	> 48-72 Hrs	> 72 Hrs	Total On Hand
CN					0

Change in Last 24 Hours

	< 24 Hrs	24-48 Hrs	48 - 72 Hrs	> 72 Hrs
CN				

Loaded Cars on Hand Prince Rupert Waiting for Placement - Last 30 Days All Railways



Port Terminal Status

Thunder Bay

Daily Activity for 6/17/2019

	Cars Arrived	Cars Received in Interchange	Cars Delivered in Interchange	Cars Placed for Unloading	Loads on Wheels at Destination As of 6/17/2019
CN	96			144	145
CP	111			294	260

Port Unloads

	06/17	06/16	Week To Date	Last Week
CN	12	10	12	402
CP	298	147	298	1,125

Age Profile of Loaded Cars Waiting Placement for Unloading

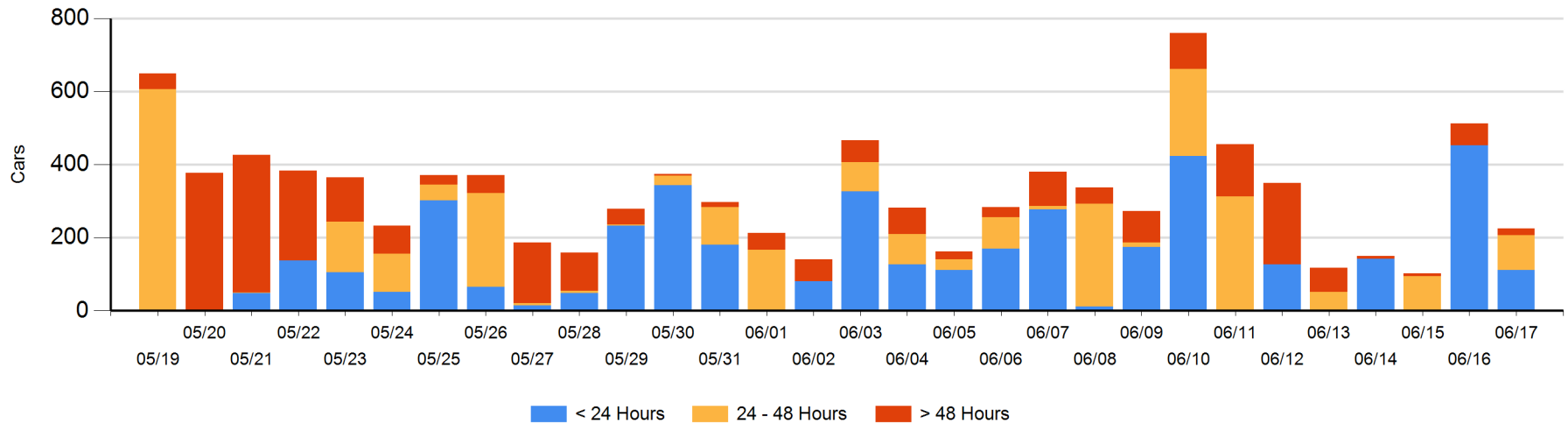
Today

	< 24 Hrs	24 - 48 Hrs	> 48-72 Hrs	> 72 Hrs	Total On Hand
CN					0
CP	111	96		18	225

Change in Last 24 Hours

	< 24 Hrs	24-48 Hrs	48 - 72 Hrs	> 72 Hrs
CN	-99			-5
CP	-242	96	-52	15

Loaded Cars on Hand Thunder Bay Waiting for Placement - Last 30 Days All Railways



Measurement Definitions

Loads on Wheels	<p>Count of loaded rail cars including all rail cars that have been released loaded at origin and have not been reported by the railway as unloaded at destination.</p> <p>Counts include all rail cars (hopper cars and boxcars) moving within a pipeline.</p>
Loads Not Moving	<p>Loaded rail cars for which the railways have not reported a movement event for 48 hours or more whether the rail car is at origin, enroute or at destination.</p>
Port Unloads	<p>Count of rail cars reported by railways as unloaded at the western port destinations of Vancouver, Prince Rupert and Thunder Bay.</p> <p>Unload counts include all rail cars (hopper cars and boxcars) unloaded by all receivers including major port terminals, transloaders and other receivers.</p>
Cars Arrived	<p>Count of rail cars reported as arrived at the destination railway terminal.</p>
Cars Received in Interchange	<p>Count of rail cars received in interchange by each railway within a destination railway terminal. Interchange activity is tracked for the Vancouver and Thunder Bay pipelines as applicable.</p>
Cars Delivered in Interchange	<p>Count of rail cars delivered in interchange by each railway within a destination railway terminal. Interchange activity is tracked for the Vancouver and Thunder Bay pipelines as applicable.</p>
Cars Placed for Unloading	<p>Count of rail cars reported by the railways as placed loaded at the receiver's facility for unloading.</p>
Loads on Wheels at Destination	<p>Count of rail cars that remain under load within the destination railway terminal including rail cars that have been reported as placed for unloading but not yet reported as unloaded.</p>
Waiting Placement for Unloading	<p>Count of rail cars that have been reported as arrived at the destination railway terminal but not reported as placed for unloading by the railway.</p> <p>For the Ports of Vancouver, Prince Rupert and Thunder Bay the count of rail cars waiting placement for unloading is categorized by age – i.e. the elapsed time from arrival at destination to the current report date.</p>