

SPEED READ

- Loads on wheels decreased overnight, marking a decline in CN traffic offset by higher CP volumes. On a net basis, volumes declined due to reduced traffic across all corridors other than Prince Rupert and E. Canada.
- Network fluidity improved overnight, led by a decline in idle car counts on both CN and CP by 42% (-237) and 23% (-169), respectively. The total count of cars for 4+ days on both railways declined 24% (-127) overnight - presently at 406 cars.
- Three days in Week 47 unloads now ahead of prior week's performance by about 50 unloads, marking improved week over week performance at Prince Rupert offset by reduced unloads at Thunder Bay and Vancouver.

Loads on Wheels

- Loads on wheels declined for the fourth consecutive day, down 2% (-138) overnight, due to reduced traffic on CN offset by higher traffic on CP - combined total at 7,837 and 6% below the trailing 30-day average.
- On a net basis, the decline in loads on wheels indicates reduced traffic across all corridors other than Prince Rupert and E. Canada.
- CN volumes decreased 8% (-340) overnight, with reduced traffic in the Vancouver and Thunder Bay corridors offset by higher traffic in the E. Canada, Prince Rupert and USA/Mex corridors. System wide CN loads on wheels currently at 4,127 and 1% below the trailing 30-day average.
- CP volumes increased 8% (+252) overnight, driven by an increase in traffic in the Vancouver and Thunder Bay corridors offset by a decline in volumes in the USA/MEX corridor. CP system wide loads on wheels presently at 3,610 and 10% below the trailing 30-day average.
- Vancouver currently at 4,439, decreased 2% (-72) overnight and have now decreased for the fourth consecutive day, now 9% below the trailing 30-day average.
- The Prince Rupert pipeline currently at 1,123, rose slightly by 1% (+11) overnight, and 5% below the trailing 30-day average.
- Thunder Bay volumes fell for the third consecutive day, down 2% (-30) overnight - currently at 1,408 and 12% above the trailing 30-day average, with 75% of traffic moving on CP.

Hopper Car Rationing

- CN rationed 104 hopper cars in week 46.

Loads Not Moving

- **The count of cars not moving for 48+ hours decreased 31% (-406) overnight, reflecting reduced counts on both CN and CP. Idle car counts presently at 892 and 11% below the trailing 30-day average.**
- CN
 - **The count of idle cars for 48+ hours decreased 42% (-237) overnight - currently at 326 cars.**
 - The number of cars idle for 4+ days decreased significantly by 47% (-131) overnight - currently at 147 cars.
 - The count of cars not moving for 7+ days rose significantly by 186% (+13) overnight - currently at 20 cars.
 - Vancouver represents 78% of all idle cars.
 - In total 46% of all idle cars are dwelling at origin locations.
- CP
 - **CP idle car counts for 48+ hours declined 23% (-169) overnight - currently at 566 cars.**
 - The number of cars idle for 4+ days rose 2% (+4) overnight and have now increased for the third consecutive day - currently at 259 cars.
 - The number of cars idle for 7+ days decreased 33% (-15) overnight - currently at 30 cars.

- Vancouver accounts for 65% of all idle cars.
- In total 36% of all idle cars are dwelling at origin locations.

Port Performance

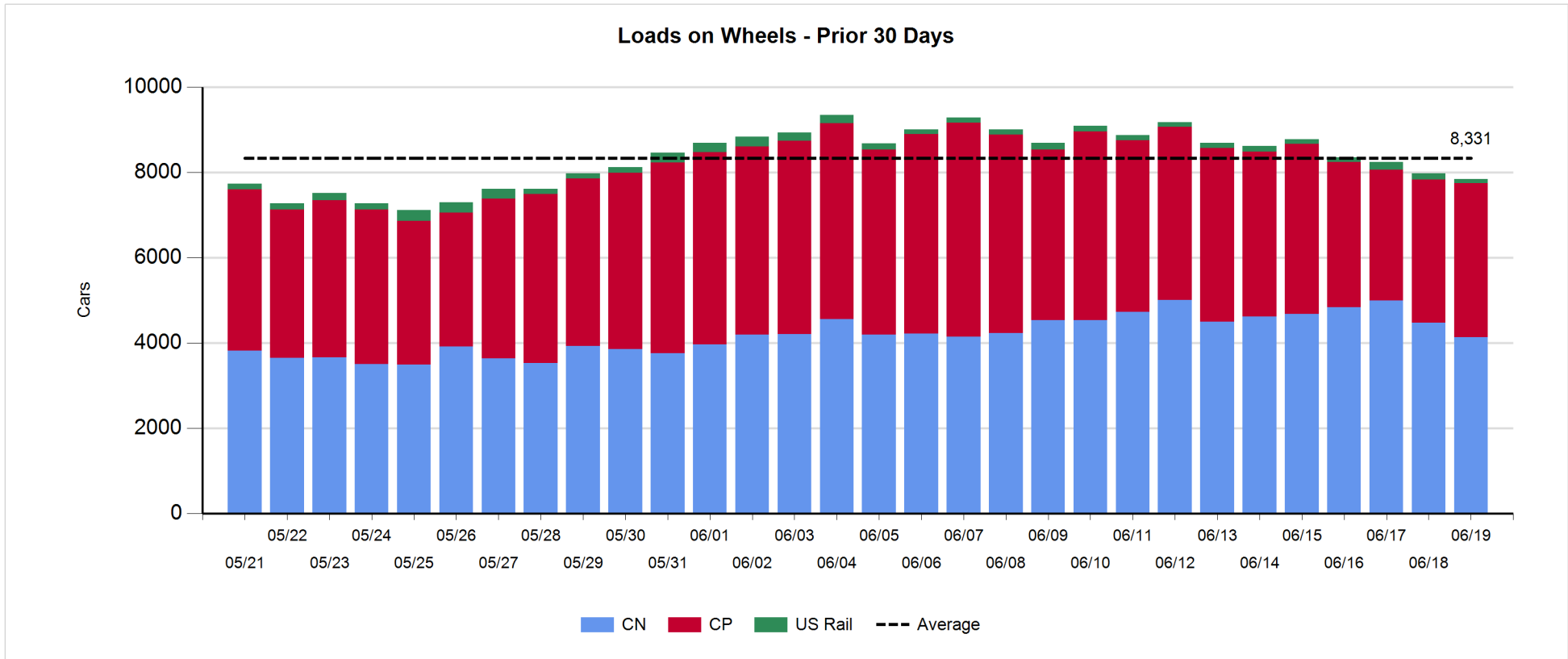
- CN and CP reported a total of 1,036 cars unloaded at the three major ports, now 4% below the trailing 30-day average. Three days in Week 47 unloads now ahead of last week's pace by nearly 50 unloads, marking higher unloads at Prince Rupert offset by reduced unloads at Thunder Bay and Vancouver.
- Vancouver
 - 542 unloads reported by CN and CP at the Port of Vancouver; CN - 209 and CP - 333. Three days in Week 47 unloads are tracking behind last week's performance by 26 unloads.
 - There are 1,550 cars on site at Vancouver with more than 800 cars arriving at the port in the last 24 hours.
 - CN and CP have more than 300 cars in British Columbia en route to Vancouver, with 150 cars at Kamloops and west, and 64% of traffic moving on CN.
- Prince Rupert
 - Prince Rupert reported 197 unloads, now ahead of last week's unloads after three days by more than 100 unloads.
 - Loads on wheels now above 1,000 cars - presently at 1,123 cars.
 - There are around 350 cars west of Jasper en route to Prince Rupert.
 - There are more than 100 cars on site at Prince Rupert with 100 cars arriving at the port in the last 24 hours.
- Thunder Bay
 - 297 unloads were reported at Thunder Bay yesterday. Three days in Week 47 unloads are tracking behind last week's pace by more than 50 unloads.
 - There are 450 cars on site at Thunder Bay with more than 350 cars arriving at the port in the prior 24 hours.
 - There are around 200 cars en route to Thunder Bay from Winnipeg and east.

Daily Loads on Wheels - 6/19/2019

	E Canada	Prince Rupert	Thunder Bay	USA/MEX	Vancouver	Total
CN	505	1,123	359	87	2,053	4,127
CP	167		1,049	26	2,368	3,610
Short Line	2				18	20
US Rail				80		80
	674	1,123	1,408	193	4,439	7,837

Change in Loads on Wheels - Prior 24 Hours

	E Canada	Prince Rupert	Thunder Bay	USA/MEX	Vancouver	Total
CN	13	11	-78	11	-297	-340
CP	0		48	-23	227	252
Short Line	-13				-2	-15
US Rail				-35		-35
	0	11	-30	-47	-72	-138

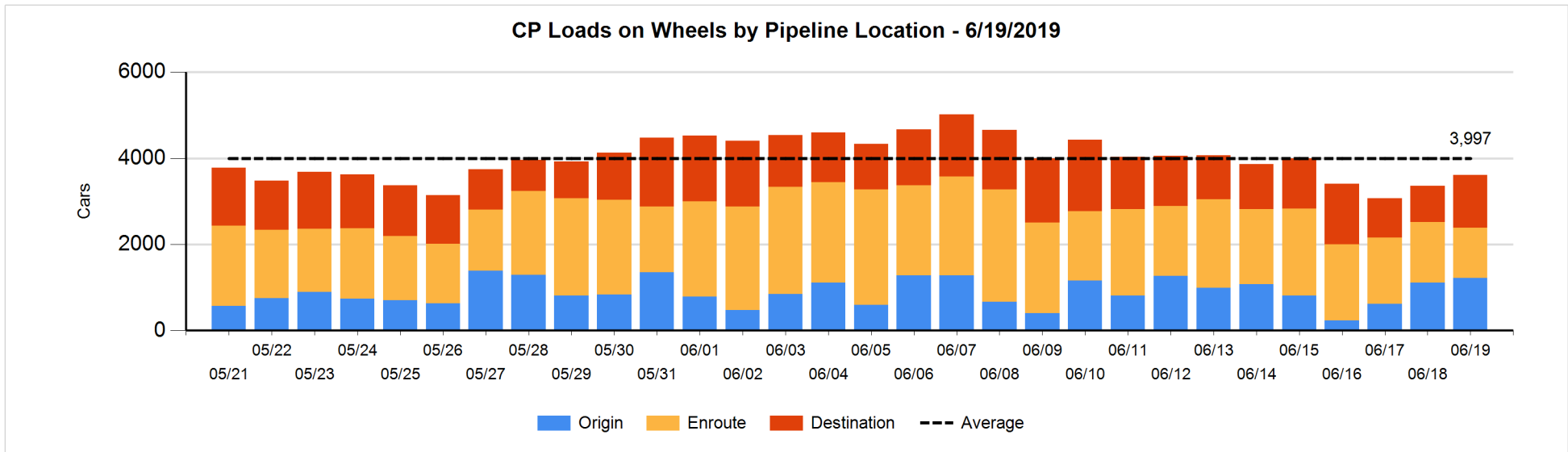
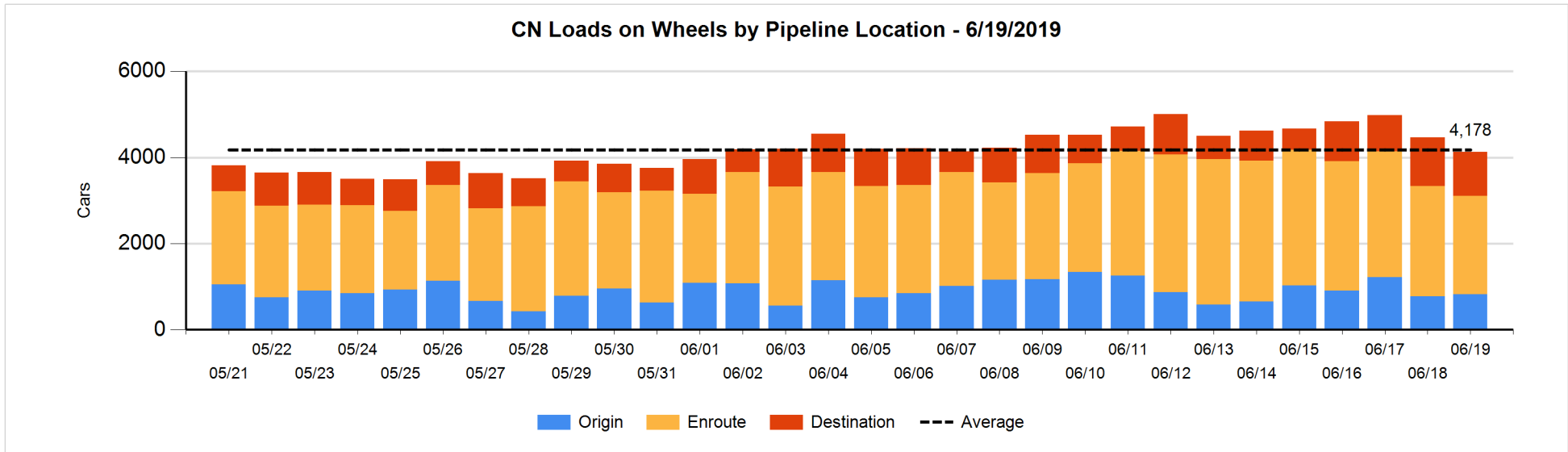


Daily Loads on Wheels By Pipeline Location - 6/19/2019

	E Canada	Prince Rupert	Thunder Bay	USA/MEX	Vancouver	Total
CN						
Origin	25	211		36	553	825
Enroute	366	800	178	22	919	2,285
Destination	114	112	181	29	581	1,017
	505	1,123	359	87	2,053	4,127
CP						
Origin	149		279	1	791	1,220
Enroute	14		503	25	618	1,160
Destination	4		267		959	1,230
	167		1,049	26	2,368	3,610
US Rail / Short Line						
Origin						
Enroute				39		39
Destination	2			41	18	61
	2			80	18	100

Change in Daily Loads on Wheels By Pipeline Location - Prior 24 Hours

	E Canada	Prince Rupert	Thunder Bay	USA/MEX	Vancouver	Total
CN						
Origin	21	2		22	1	46
Enroute	-26	101	-118	-5	-219	-267
Destination	18	-92	40	-6	-79	-119
	13	11	-78	11	-297	-340
CP						
Origin	3		-45	-1	157	114
Enroute	-1		54	-21	-288	-256
Destination	-2		39	-1	358	394
	0		48	-23	227	252
US Rail / Short Line						
Origin						
Enroute				-3		-3
Destination	-13			-32	-2	-47
	-13			-35	-2	-50

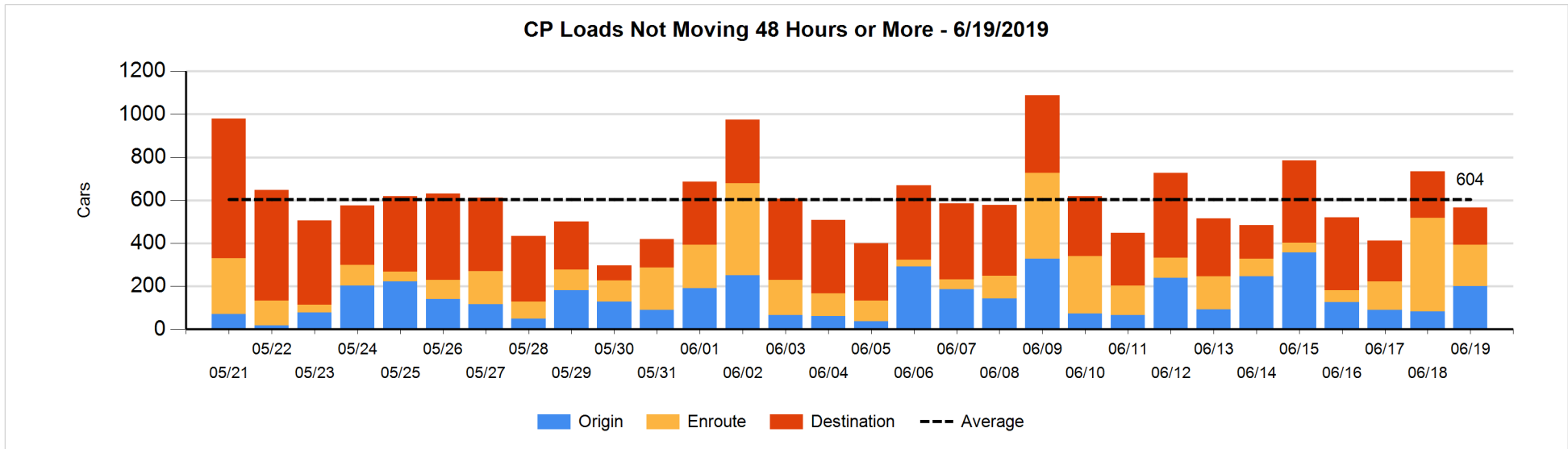
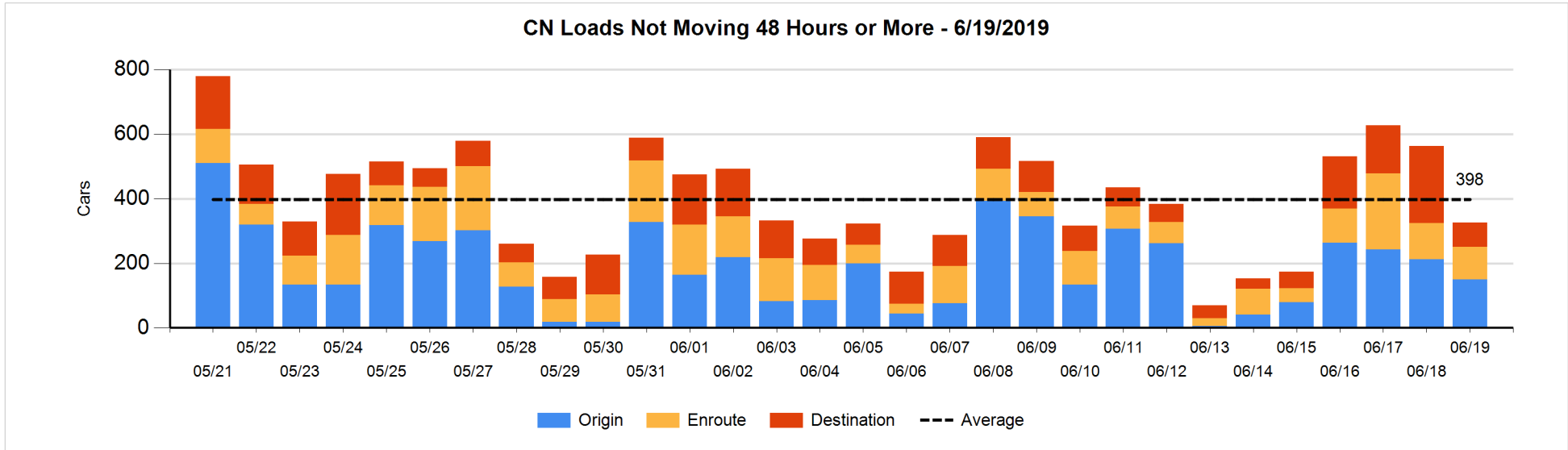


Loads Not Moving 48 Hours or More - 6/19/2019

	E Canada	Prince Rupert	Thunder Bay	USA/MEX	Vancouver	Total
CN						
Origin		4		1	144	149
Enroute	31	7		6	58	102
Destination	14	6		2	53	75
	45	17		9	255	326
CP						
Origin	26		1	1	173	201
Enroute			169	1	23	193
Destination			1		171	172
	26		171	2	367	566
US Rail / Short Line						
Origin						
Enroute				23		23
Destination	1			21	2	24
	1			44	2	47

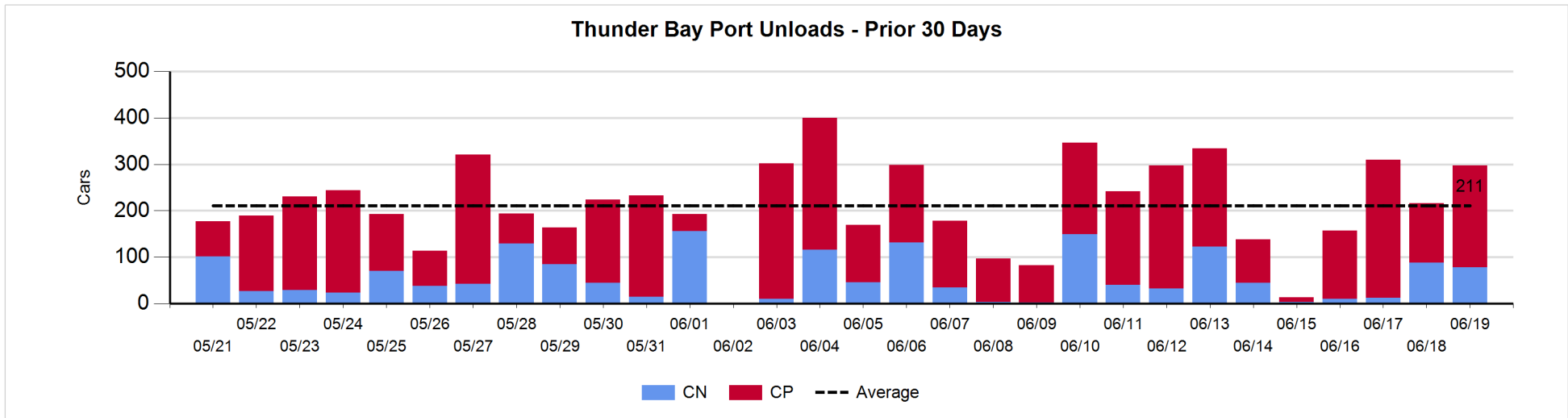
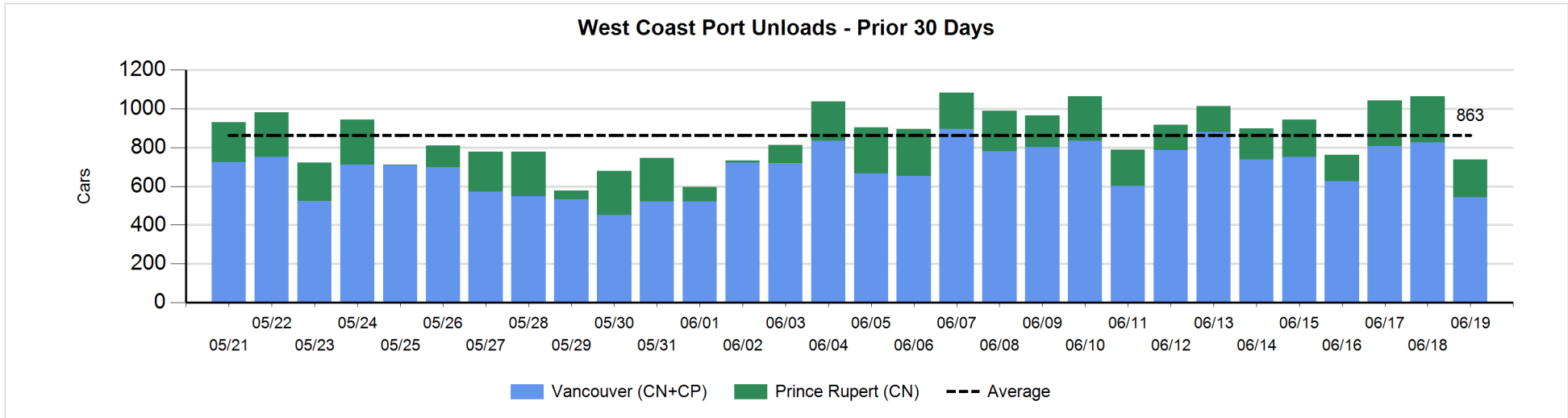
Change in Loads Not Moving 48 Hours or More - 6/19/2019

	E Canada	Prince Rupert	Thunder Bay	USA/MEX	Vancouver	Total
CN						
Origin		-96		1	32	-63
Enroute	-18	6		0	1	-11
Destination	9	-102	-1	-2	-67	-163
	-9	-192	-1	-1	-34	-237
CP						
Origin	26		1	0	91	118
Enroute			1	0	-243	-242
Destination			-29		-16	-45
	26		-27	0	-168	-169
US Rail / Short Line						
Origin						
Enroute				-2		-2
Destination	0			2	1	3
	0			0	1	1



Port Unloads - 6/19/2019

	Prince Rupert	Vancouver	West Coast Total	Thunder Bay	Total
CN	197	209	406	78	484
CP		333	333	219	552
	197	542	739	297	1,036



Port Terminal Status

Vancouver

Daily Activity for 6/19/2019

	Cars Arrived	Cars Received in Interchange	Cars Delivered in Interchange	Cars Placed for Unloading	Loads on Wheels at Destination As of 6/19/2019
CN	351	30	6	159	581
CP	473	6	31	408	959
SRY	1	1		5	18

Port Unloads

	06/19	06/18	Week To Date	Last Week
CN	209	380	865	2,106
CP	333	446	1,311	3,113
SRY	5	14	35	32

Age Profile of Loaded Cars Waiting Placement for Unloading

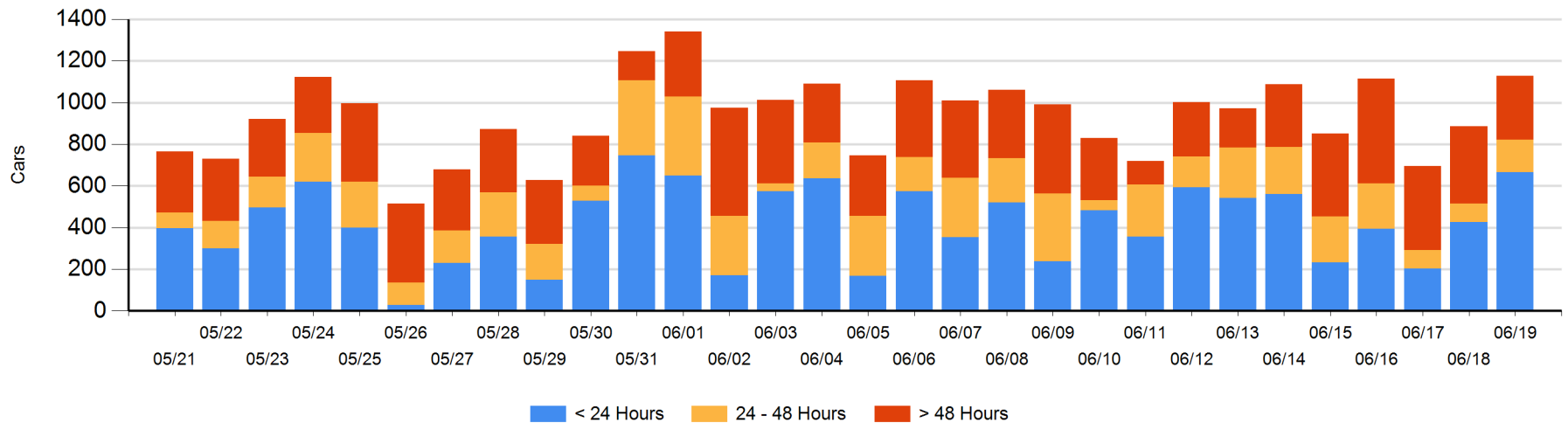
Today

	< 24 Hrs	24 - 48 Hrs	> 48-72 Hrs	> 72 Hrs	Total On Hand
CN	304	72	64	40	480
CP	361	81	26	178	646
SRY		3			3

Change in Last 24 Hours

	< 24 Hrs	24-48 Hrs	48 - 72 Hrs	> 72 Hrs
CN	71	8	52	-113
CP	172	55	14	-17
SRY	-3	3		

Loaded Cars on Hand Vancouver Waiting for Placement - Last 30 Days All Railways



Port Terminal Status

Prince Rupert

Daily Activity for 6/19/2019

	Cars Arrived	Cars Received in Interchange	Cars Delivered in Interchange	Cars Placed for Unloading	Loads on Wheels at Destination As of 6/19/2019
CN	105			105	112

Port Unloads

	06/19	06/18	Week To Date	Last Week
CN	197	239	670	1,171

Age Profile of Loaded Cars Waiting Placement for Unloading

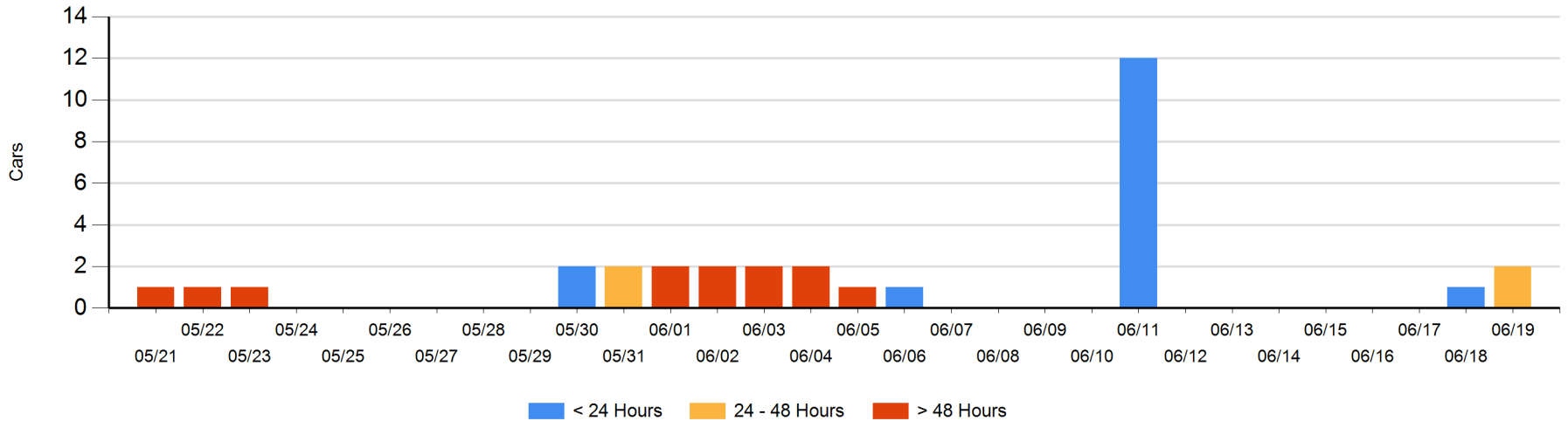
Today

	< 24 Hrs	24 - 48 Hrs	> 48-72 Hrs	> 72 Hrs	Total On Hand
CN		2			2

Change in Last 24 Hours

	< 24 Hrs	24-48 Hrs	48 - 72 Hrs	> 72 Hrs
CN	-1	2		

Loaded Cars on Hand Prince Rupert Waiting for Placement - Last 30 Days All Railways



Port Terminal Status

Thunder Bay

Daily Activity for 6/19/2019

	Cars Arrived	Cars Received in Interchange	Cars Delivered in Interchange	Cars Placed for Unloading	Loads on Wheels at Destination As of 6/19/2019
CN	118				181
CP	259			191	267

Port Unloads

	06/19	06/18	Week To Date	Last Week
CN	78	88	178	402
CP	219	128	645	1,125

Age Profile of Loaded Cars Waiting Placement for Unloading

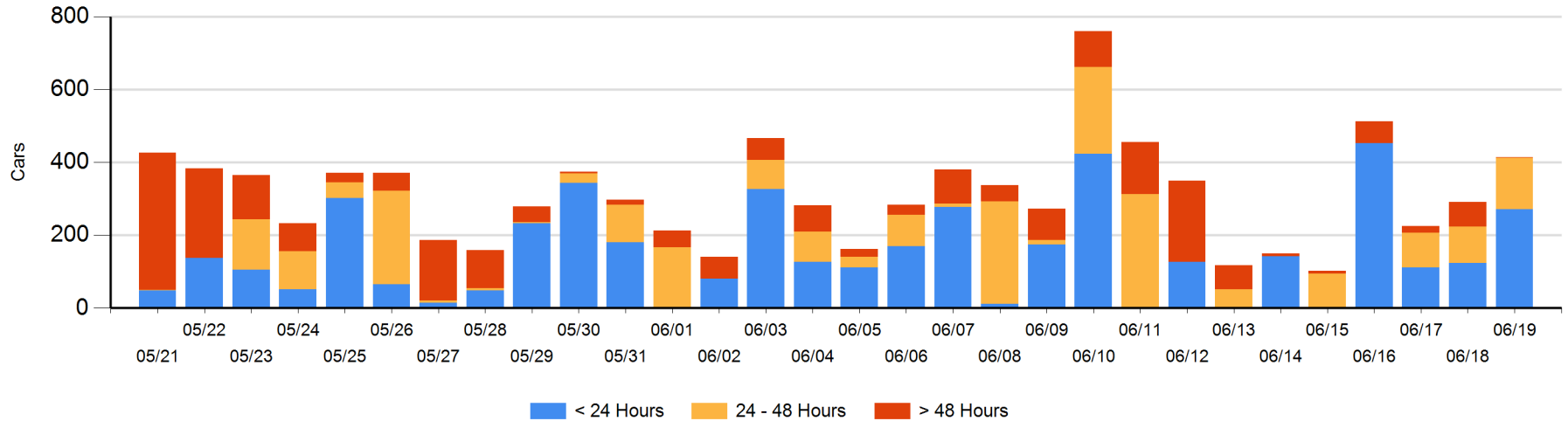
Today

	< 24 Hrs	24 - 48 Hrs	> 48-72 Hrs	> 72 Hrs	Total On Hand
CN	118	28			146
CP	153	113		2	268

Change in Last 24 Hours

	< 24 Hrs	24-48 Hrs	48 - 72 Hrs	> 72 Hrs
CN	90	28		
CP	58	12	-59	-6

Loaded Cars on Hand Thunder Bay Waiting for Placement - Last 30 Days All Railways



Measurement Definitions

Loads on Wheels	<p>Count of loaded rail cars including all rail cars that have been released loaded at origin and have not been reported by the railway as unloaded at destination.</p> <p>Counts include all rail cars (hopper cars and boxcars) moving within a pipeline.</p>
Loads Not Moving	<p>Loaded rail cars for which the railways have not reported a movement event for 48 hours or more whether the rail car is at origin, enroute or at destination.</p>
Port Unloads	<p>Count of rail cars reported by railways as unloaded at the western port destinations of Vancouver, Prince Rupert and Thunder Bay.</p> <p>Unload counts include all rail cars (hopper cars and boxcars) unloaded by all receivers including major port terminals, transloaders and other receivers.</p>
Cars Arrived	<p>Count of rail cars reported as arrived at the destination railway terminal.</p>
Cars Received in Interchange	<p>Count of rail cars received in interchange by each railway within a destination railway terminal. Interchange activity is tracked for the Vancouver and Thunder Bay pipelines as applicable.</p>
Cars Delivered in Interchange	<p>Count of rail cars delivered in interchange by each railway within a destination railway terminal. Interchange activity is tracked for the Vancouver and Thunder Bay pipelines as applicable.</p>
Cars Placed for Unloading	<p>Count of rail cars reported by the railways as placed loaded at the receiver's facility for unloading.</p>
Loads on Wheels at Destination	<p>Count of rail cars that remain under load within the destination railway terminal including rail cars that have been reported as placed for unloading but not yet reported as unloaded.</p>
Waiting Placement for Unloading	<p>Count of rail cars that have been reported as arrived at the destination railway terminal but not reported as placed for unloading by the railway.</p> <p>For the Ports of Vancouver, Prince Rupert and Thunder Bay the count of rail cars waiting placement for unloading is categorized by age – i.e. the elapsed time from arrival at destination to the current report date.</p>