

**SPEED READ**

- Loads on wheels rose overnight, marking a rise in both CN and CP volumes. On a net basis, volumes rose due to higher traffic in the Vancouver, Prince Rupert and USA/MEX corridors offset by lower volumes in the Thunder Bay and E. Canada corridors.
- Network fluidity improved overnight, led by a decline in idle car counts on CN by 25% (-148) offset by a rise in idle car counts on CP by 1% (+8). The total count of cars for 4+ days on both railways rose 15% (+39) overnight and have now increased for the fourth consecutive day - now at 302 cars.
- One day in Week 48 unloads now behind prior week's performance by 150 unloads, marking lower unloads across all three major ports - Vancouver, Thunder Bay and Prince Rupert.

=====

**Loads on Wheels**

- Loads on wheels rose 4% (+371) overnight, due to higher volumes on both CN and CP - combined total at 8,755 and 3% above the trailing 30-day average.
- On a net basis, the increase in loads on wheels reflects higher traffic in the Vancouver, Prince Rupert and USA/MEX corridors offset by lower volumes in the Thunder Bay and E. Canada corridors.
- CN volumes rose 7% (+331) overnight, with higher traffic in the Prince Rupert, Vancouver and USA/MEX corridors offset by lower traffic in the E. Canada and Thunder Bay corridors. System wide CN loads on wheels now at 4,807 and 11% above the trailing 30-day average.
- CP volumes rose slightly by 1% (+41) overnight, driven by a rise in volumes across all corridors other than Thunder Bay. CP system wide loads on wheels now at 3,832 and 5% below the trailing 30-day average.
- Vancouver now at 5,225, increased 6% (+306) overnight, now 4% above the trailing 30-day average.
- The Prince Rupert pipeline now at 1,099, increased significantly by 31% (+263) overnight, and 8% below the trailing 30-day average.
- Thunder Bay volumes decreased significantly by 10% (-186) overnight - now at 1,600 and 19% above the trailing 30-day average, with 65% of traffic moving on CP.

**Hopper Car Rationing**

- CN rationed 104 hopper cars in week 46.

**Loads Not Moving**

- **The count of cars not moving for 48+ hours decreased 12% (-140) overnight, reflecting lower counts on CN offset by higher counts on CP. Idle car counts now at 1,048 and 10% above the trailing 30-day average.**
- CN
  - **The count of idle cars for 48+ hours fell 25% (-148) overnight - currently at 433 cars.**
  - The number of cars idle for 4+ days fell 7% (-10) overnight - now at 132 cars.
  - The count of cars not moving for 7+ days gained for the third consecutive day, up 271% (+46) overnight - currently at 63 cars.
  - Vancouver represents 36% of all idle cars.
  - In total 4% of all idle cars are dwelling at origin locations.
- CP
  - **CP idle car counts for 48+ hours rose slightly by 1% (+8) overnight - presently at 615 cars.**
  - The number of cars idle for 4+ days rose 40% (+49) overnight - now at 170 cars.
  - The number of cars idle for 7+ days gained 6% (+1) overnight - now at 19 cars.

- Vancouver accounts for 60% of all idle cars.
- In total 44% of all idle cars are dwelling at origin locations.

### **Port Performance**

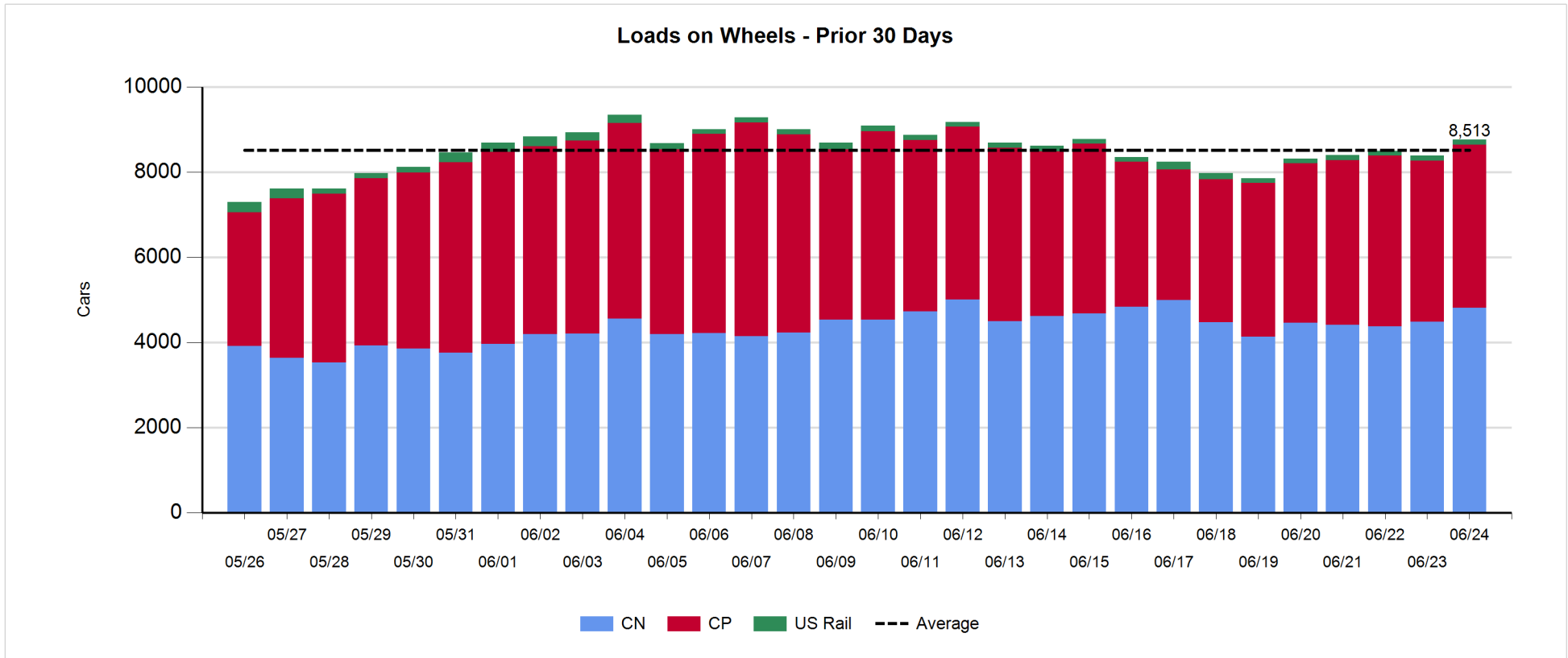
- CN and CP reported a total of 1,211 cars unloaded at the three major ports, now 13% above the trailing 30-day average. One day in Week 48 unloads now behind last week's pace by 150 unloads, marking lower unloads across all three major ports - Vancouver, Thunder Bay and Prince Rupert.
- Vancouver
  - 766 unloads reported by CN and CP at the Port of Vancouver; CN - 337 and CP - 429. One day in Week 48 unloads are tracking behind last week's performance by 50 unloads.
  - There are more than 1,050 cars on site at Vancouver with about 900 cars arriving at the port in the last 24 hours.
  - CN and CP have 700 cars in British Columbia en route to Vancouver, with 350 cars at Kamloops and west, and 67% of traffic moving on CP.
- Prince Rupert
  - Prince Rupert reported 184 unloads, now behind last week's unloads after one day by 50 unloads.
  - Loads on wheels now above 1,000 cars - now at 1,099 cars.
  - There are more than 200 cars west of Jasper en route to Prince Rupert.
  - There are more than 100 cars on site at Prince Rupert with 300 cars arriving at the port in the last 24 hours.
- Thunder Bay
  - 261 unloads were reported at Thunder Bay yesterday. One day in Week 48 unloads are tracking behind last week's pace by 50 unloads.
  - There are 1,000 cars on site at Thunder Bay with 550 cars arriving at the port in the prior 24 hours.
  - There are 150 cars en route to Thunder Bay from Winnipeg and east.

**Daily Loads on Wheels - 6/24/2019**

	E Canada	Prince Rupert	Thunder Bay	USA/MEX	Vancouver	Total
CN	431	1,099	561	84	2,632	4,807
CP	140		1,039	106	2,547	3,832
Short Line	8				46	54
US Rail				62		62
	579	1,099	1,600	252	5,225	8,755

**Change in Loads on Wheels - Prior 24 Hours**

	E Canada	Prince Rupert	Thunder Bay	USA/MEX	Vancouver	Total
CN	-109	263	-43	6	214	331
CP	1		-143	100	83	41
Short Line	-3				9	6
US Rail				-7		-7
	-111	263	-186	99	306	371

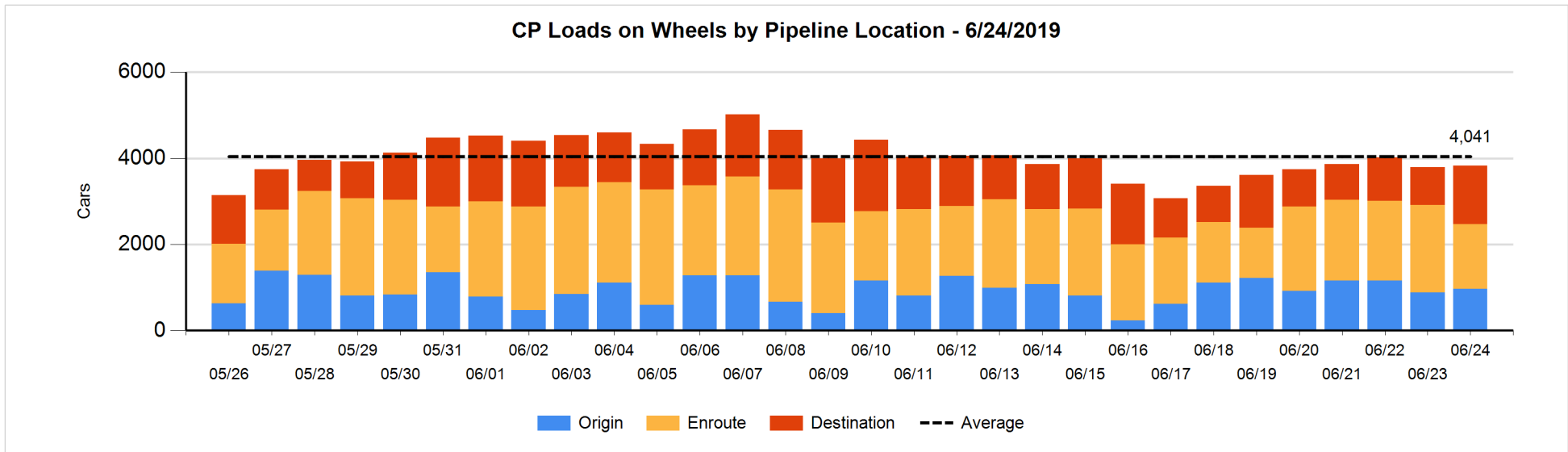
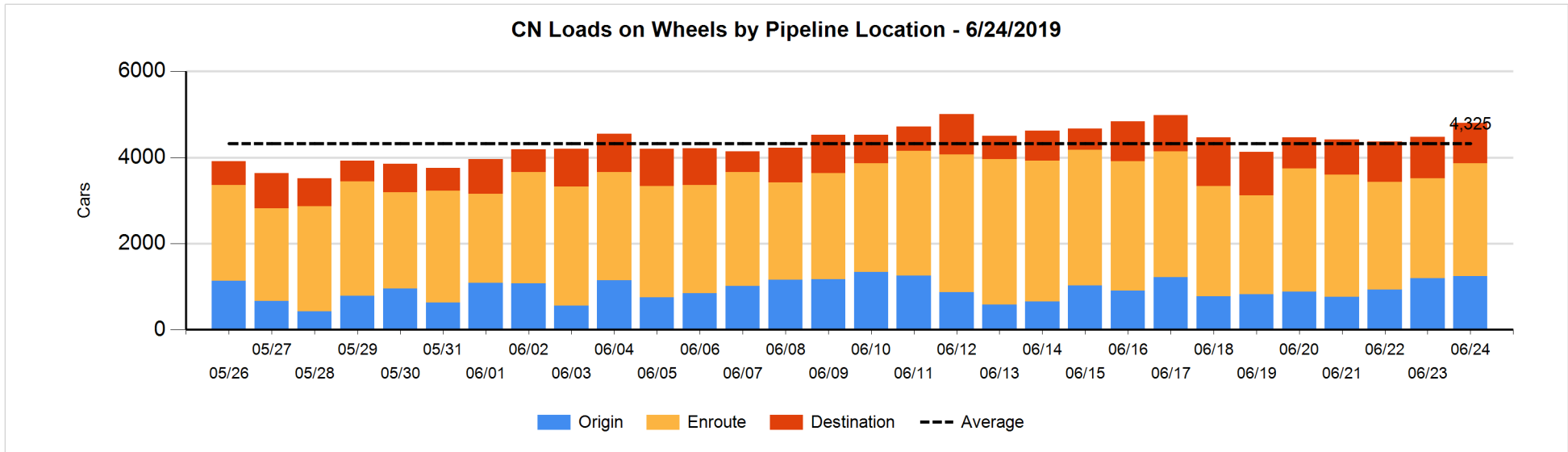


**Daily Loads on Wheels By Pipeline Location - 6/24/2019**

	E Canada	Prince Rupert	Thunder Bay	USA/MEX	Vancouver	Total
CN						
Origin	1	347	75	22	803	1,248
Enroute	286	625	228	52	1,419	2,610
Destination	144	127	258	10	410	949
	431	1,099	561	84	2,632	4,807
CP						
Origin	1		69	101	791	962
Enroute	135		237	5	1,135	1,512
Destination	4		733		621	1,358
	140		1,039	106	2,547	3,832
US Rail / Short Line						
Origin						
Enroute				35		35
Destination	8			27	46	81
	8			62	46	116

**Change in Daily Loads on Wheels By Pipeline Location - Prior 24 Hours**

	E Canada	Prince Rupert	Thunder Bay	USA/MEX	Vancouver	Total
CN						
Origin	-33	150	-151	8	83	57
Enroute	-29	-10	196	0	125	282
Destination	-47	123	-88	-2	6	-8
	-109	263	-43	6	214	331
CP						
Origin	1		-112	100	92	81
Enroute	0		-411	0	-104	-515
Destination	0		380		95	475
	1		-143	100	83	41
US Rail / Short Line						
Origin						
Enroute				-3		-3
Destination	-3			-4	9	2
	-3			-7	9	-1

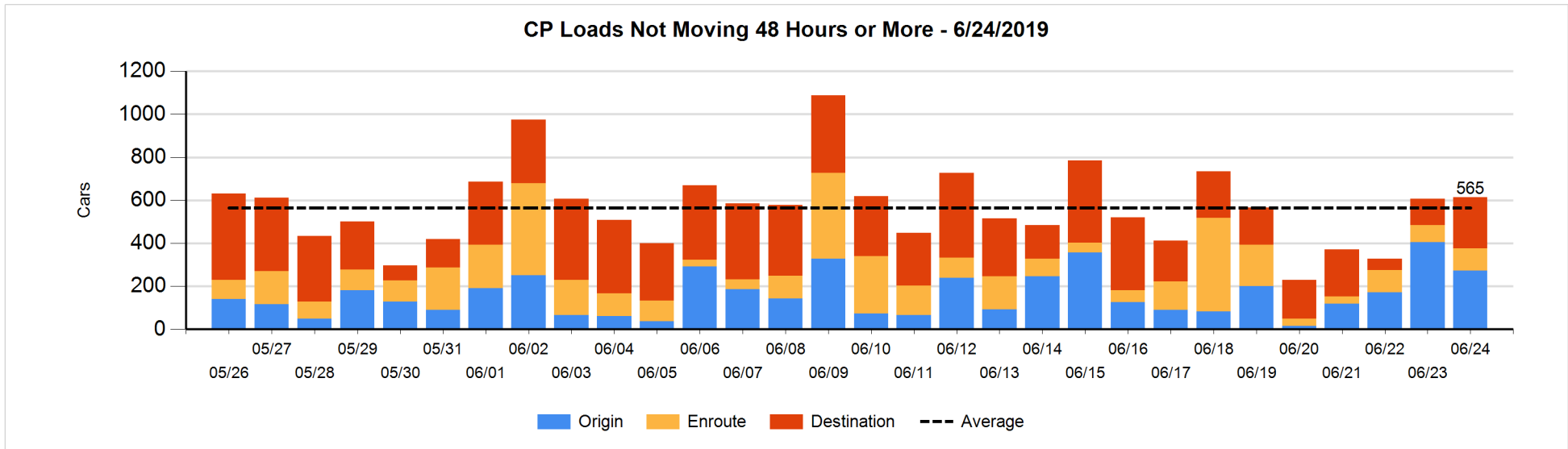
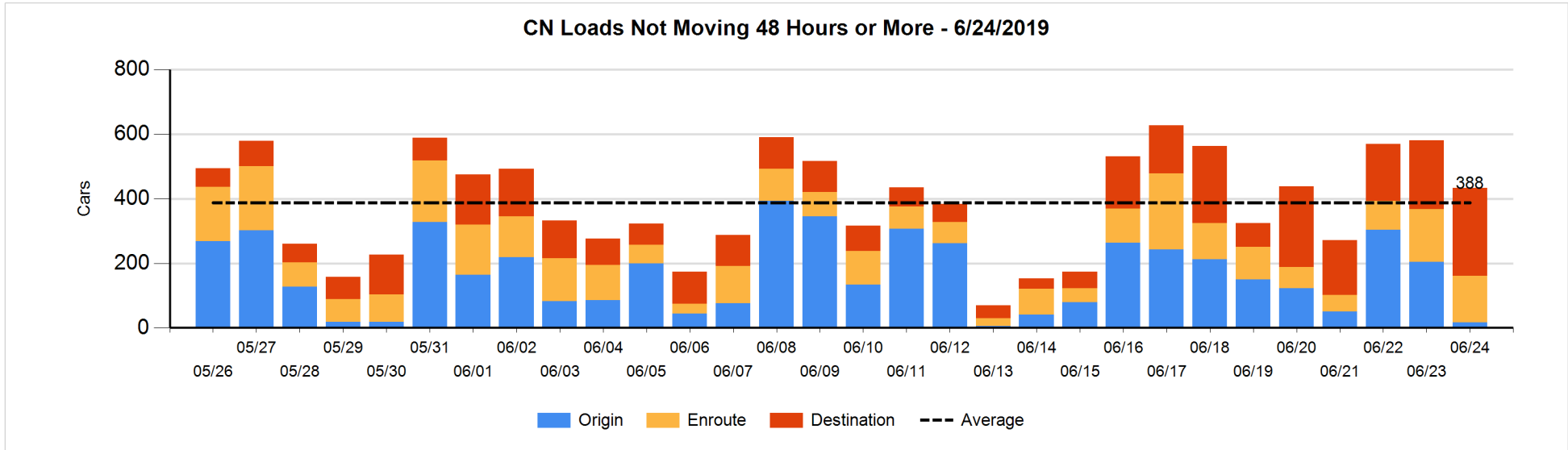


**Loads Not Moving 48 Hours or More - 6/24/2019**

	E Canada	Prince Rupert	Thunder Bay	USA/MEX	Vancouver	Total
<b>CN</b>						
Origin		2		14		16
Enroute	43	11	2	4	85	145
Destination	64	2	127	10	69	272
	107	15	129	28	154	433
<b>CP</b>						
Origin			69	1	203	273
Enroute	1		3	2	97	103
Destination	4		163		72	239
	5		235	3	372	615
<b>US Rail / Short Line</b>						
Origin						
Enroute				19		19
Destination	2			18	18	38
	2			37	18	57

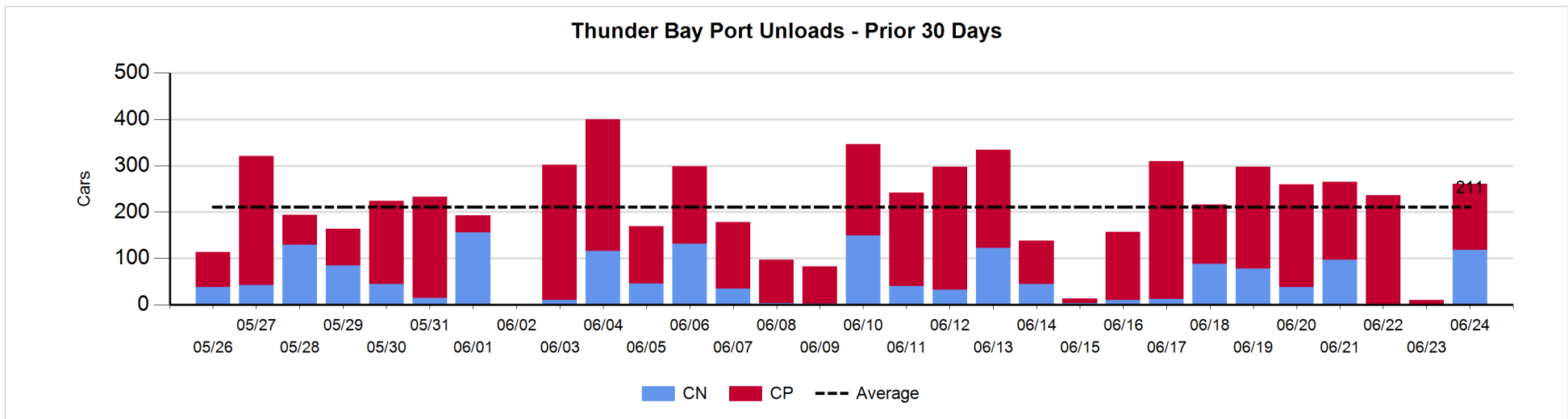
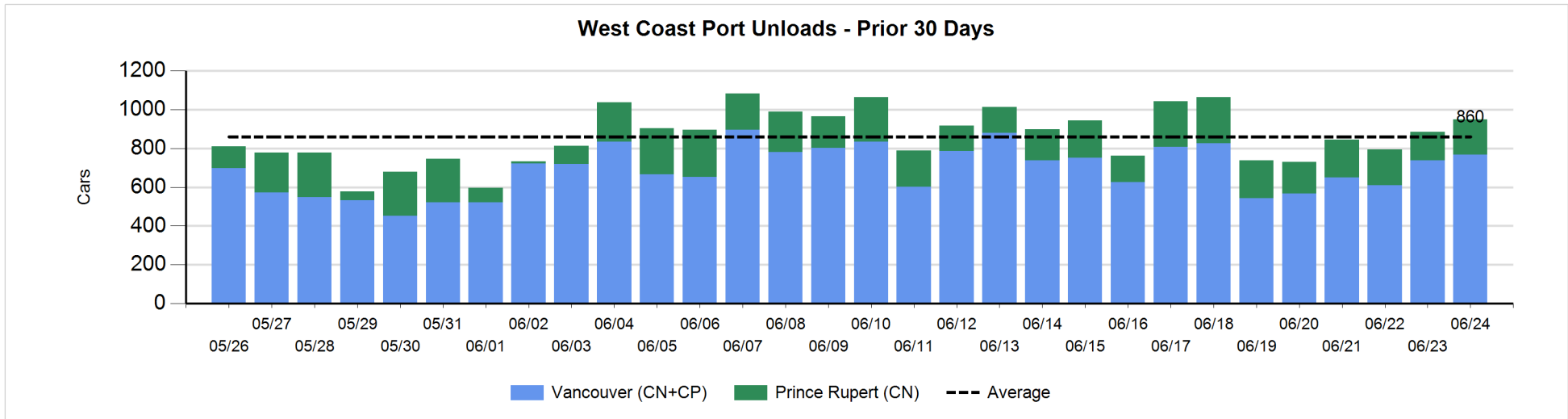
**Change in Loads Not Moving 48 Hours or More - 6/24/2019**

	E Canada	Prince Rupert	Thunder Bay	USA/MEX	Vancouver	Total
<b>CN</b>						
Origin		0	-127	14	-75	-188
Enroute	3	-49	0	1	27	-18
Destination	21	-1	34	-2	6	58
	24	-50	-93	13	-42	-148
<b>CP</b>						
Origin			0	0	-133	-133
Enroute	-5		1	1	27	24
Destination	0		121		-4	117
	-5		122	1	-110	8
<b>US Rail / Short Line</b>						
Origin						
Enroute				-2		-2
Destination	-9			-3	-4	-16
	-9			-5	-4	-18



Port Unloads - 6/24/2019

	Prince Rupert	Vancouver	West Coast Total	Thunder Bay	Total
CN	184	337	521	118	639
CP		429	429	143	572
	184	766	950	261	1,211





**Port Terminal Status**

**Vancouver**

Daily Activity for 6/24/2019

	Cars Arrived	Cars Received in Interchange	Cars Delivered in Interchange	Cars Placed for Unloading	Loads on Wheels at Destination As of 6/24/2019
CN	214	129	126	354	410
CP	670	126	146	436	621
SRY		17		3	46

**Port Unloads**

	06/24	06/23	Week To Date	Last Week
CN	337	403	337	2,013
CP	429	336	429	2,729
SRY	8		8	65

**Age Profile of Loaded Cars Waiting Placement for Unloading**

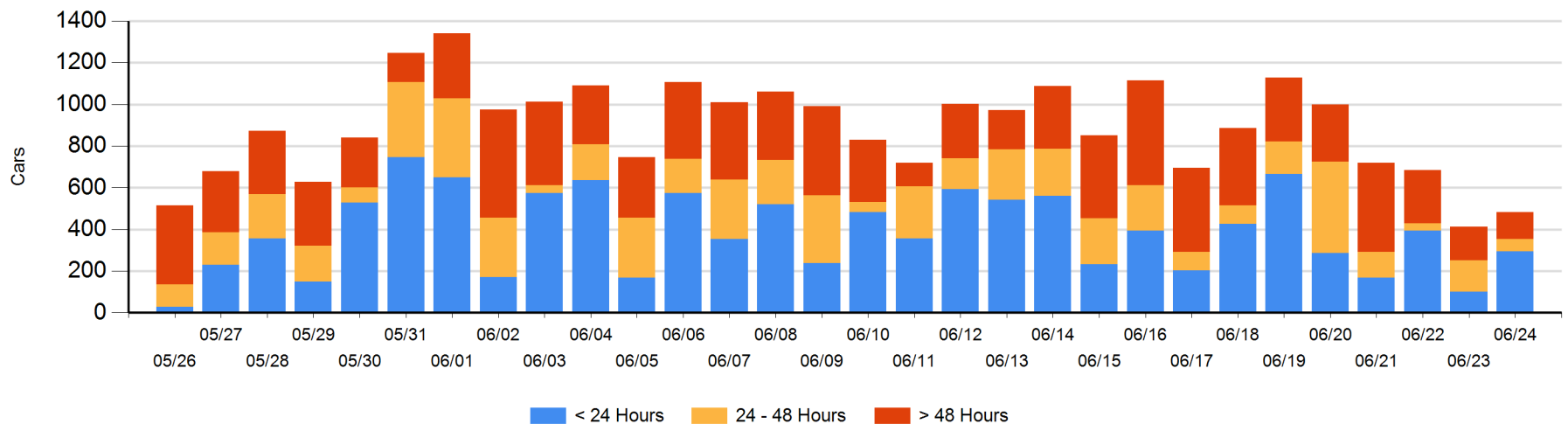
**Today**

	< 24 Hrs	24 - 48 Hrs	> 48-72 Hrs	> 72 Hrs	Total On Hand
CN	56	19		24	99
CP	238	40	30	76	384
SRY				1	1

**Change in Last 24 Hours**

	< 24 Hrs	24-48 Hrs	48 - 72 Hrs	> 72 Hrs
CN	-4	-34		-10
CP	198	-59	22	-41
SRY				-1

**Loaded Cars on Hand Vancouver Waiting for Placement - Last 30 Days All Railways**



**Port Terminal Status**

**Prince Rupert**

**Daily Activity for 6/24/2019**

	Cars Arrived	Cars Received in Interchange	Cars Delivered in Interchange	Cars Placed for Unloading	Loads on Wheels at Destination As of 6/24/2019
CN	307			307	127

**Port Unloads**

	06/24	06/23	Week To Date	Last Week
CN	184	146	184	1,357

**Age Profile of Loaded Cars Waiting Placement for Unloading**

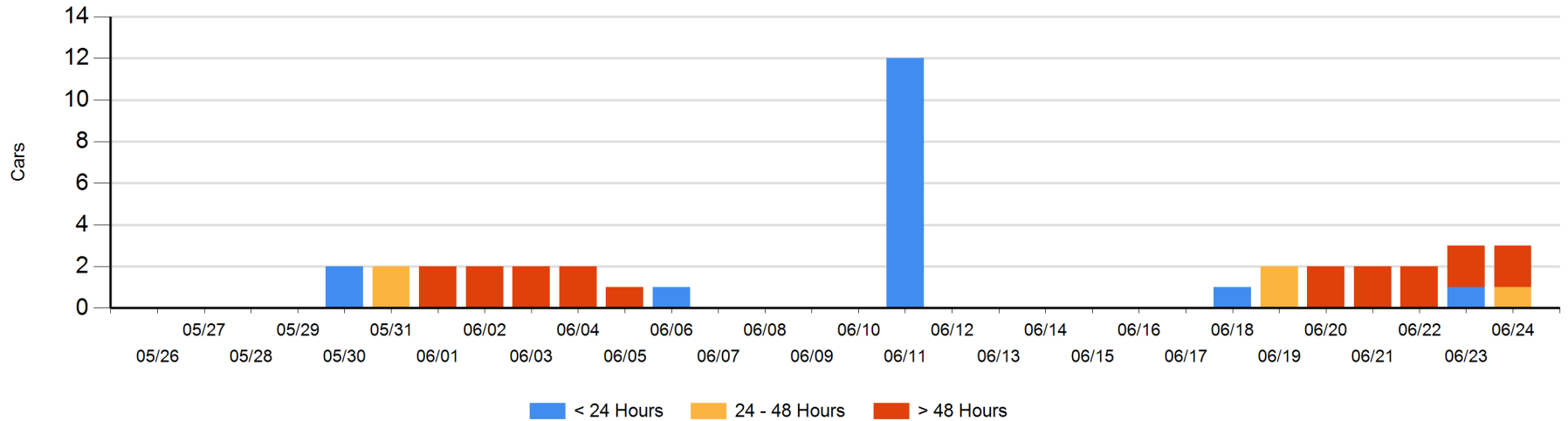
**Today**

	< 24 Hrs	24 - 48 Hrs	> 48-72 Hrs	> 72 Hrs	Total On Hand
CN		1		2	3

**Change in Last 24 Hours**

	< 24 Hrs	24-48 Hrs	48 - 72 Hrs	> 72 Hrs
CN	-1	1		0

**Loaded Cars on Hand Prince Rupert Waiting for Placement - Last 30 Days All Railways**



**Port Terminal Status**

**Thunder Bay**

Daily Activity for 6/24/2019

	Cars Arrived	Cars Received in Interchange	Cars Delivered in Interchange	Cars Placed for Unloading	Loads on Wheels at Destination As of 6/24/2019
CN	30				258
CP	523			123	733

**Port Unloads**

	06/24	06/23	Week To Date	Last Week
CN	118		118	313
CP	143	10	143	1,281

**Age Profile of Loaded Cars Waiting Placement for Unloading**

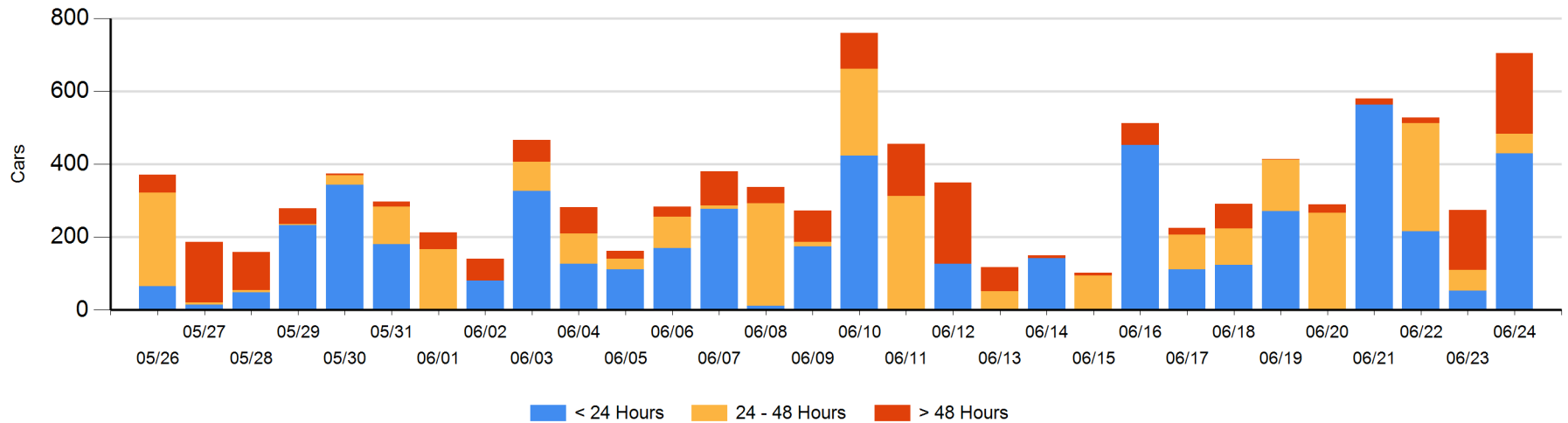
**Today**

	< 24 Hrs	24 - 48 Hrs	> 48-72 Hrs	> 72 Hrs	Total On Hand
CN	30	53		61	144
CP	400		57	104	561

**Change in Last 24 Hours**

	< 24 Hrs	24-48 Hrs	48 - 72 Hrs	> 72 Hrs
CN	-23	53	-47	47
CP	400	-57	-46	103

**Loaded Cars on Hand Thunder Bay Waiting for Placement - Last 30 Days All Railways**



## Measurement Definitions

Loads on Wheels	<p>Count of loaded rail cars including all rail cars that have been released loaded at origin and have not been reported by the railway as unloaded at destination.</p> <p>Counts include all rail cars (hopper cars and boxcars) moving within a pipeline.</p>
Loads Not Moving	<p>Loaded rail cars for which the railways have not reported a movement event for 48 hours or more whether the rail car is at origin, enroute or at destination.</p>
Port Unloads	<p>Count of rail cars reported by railways as unloaded at the western port destinations of Vancouver, Prince Rupert and Thunder Bay.</p> <p>Unload counts include all rail cars (hopper cars and boxcars) unloaded by all receivers including major port terminals, transloaders and other receivers.</p>
Cars Arrived	<p>Count of rail cars reported as arrived at the destination railway terminal.</p>
Cars Received in Interchange	<p>Count of rail cars received in interchange by each railway within a destination railway terminal. Interchange activity is tracked for the Vancouver and Thunder Bay pipelines as applicable.</p>
Cars Delivered in Interchange	<p>Count of rail cars delivered in interchange by each railway within a destination railway terminal. Interchange activity is tracked for the Vancouver and Thunder Bay pipelines as applicable.</p>
Cars Placed for Unloading	<p>Count of rail cars reported by the railways as placed loaded at the receiver's facility for unloading.</p>
Loads on Wheels at Destination	<p>Count of rail cars that remain under load within the destination railway terminal including rail cars that have been reported as placed for unloading but not yet reported as unloaded.</p>
Waiting Placement for Unloading	<p>Count of rail cars that have been reported as arrived at the destination railway terminal but not reported as placed for unloading by the railway.</p> <p>For the Ports of Vancouver, Prince Rupert and Thunder Bay the count of rail cars waiting placement for unloading is categorized by age – i.e. the elapsed time from arrival at destination to the current report date.</p>