

SPEED READ

- Loads on wheels increased overnight, reflecting higher CP traffic offset by a decline in CN volumes. On a net basis, volumes gained due to higher volumes in the Thunder Bay, USA/MEX and Vancouver corridors offset by reduced volumes in the Prince Rupert and E. Canada corridors.
- Network fluidity improved overnight, led by a decline in idle car counts on CP by 38% (-232) offset by an increase in idle car counts on CN by 11% (+47). The total count of cars for 4+ days on both railways decreased 8% (-25) overnight - presently at 277 cars.
- Two days in Week 48 unloads now behind prior week's performance by 100 unloads, marking reduced unloads at Prince Rupert offset by improved week over week performance at Thunder Bay and Vancouver.

Loads on Wheels

- Loads on wheels increased 2% (+185) overnight, due to higher traffic on CP offset by reduced traffic on CN - combined total at 8,940 and 4% above the trailing 30-day average.
- On a net basis, the increase in loads on wheels reflects higher volumes in the Thunder Bay, USA/MEX and Vancouver corridors offset by reduced volumes in the Prince Rupert and E. Canada corridors.
- CN volumes declined 3% (-161) overnight, with reduced traffic across all corridors other than Vancouver. System wide CN loads on wheels now at 4,646 and 7% above the trailing 30-day average.
- CP volumes increased 9% (+347) overnight, driven by a rise in volumes across all corridors - Vancouver, Thunder Bay, USA/MEX and E. Canada. CP system wide loads on wheels presently at 4,179 and 3% above the trailing 30-day average.
- Vancouver currently at 5,320, increased 2% (+95) overnight, now 5% above the trailing 30-day average.
- The Prince Rupert pipeline currently at 992, decreased 10% (-107) overnight, and 16% below the trailing 30-day average.
- Thunder Bay volumes increased significantly by 12% (+188) overnight - now at 1,788, the highest seen in the last 30 days, and 30% above the trailing 30-day average, with 69% of traffic moving on CP.

Hopper Car Rationing

- CN rationed 104 hopper cars in week 46.

Loads Not Moving

- **The count of cars not moving for 48+ hours decreased 18% (-185) overnight, marking reduced counts on CP offset by higher counts on CN. Idle car counts currently at 863 and 9% below the trailing 30-day average.**
- CN
 - **The count of idle cars for 48+ hours increased 11% (+47) overnight - presently at 480 cars.**
 - The number of cars idle for 4+ days increased 8% (+11) overnight - presently at 143 cars.
 - The count of cars not moving for 7+ days increased for the fourth consecutive day, up 19% (+12) overnight - now at 75 cars.
 - Vancouver represents 45% of all idle cars.
 - In total 22% of all idle cars are dwelling at origin locations.
- CP
 - **CP idle car counts for 48+ hours declined 38% (-232) overnight - now at 383 cars.**
 - The number of cars idle for 4+ days declined 21% (-36) overnight - currently at 134 cars.

- The number of cars idle for 7+ days remained unchanged (0) overnight - presently at 19 cars.
- Vancouver accounts for 15% of all idle cars.
- In total 19% of all idle cars are dwelling at origin locations.

Port Performance

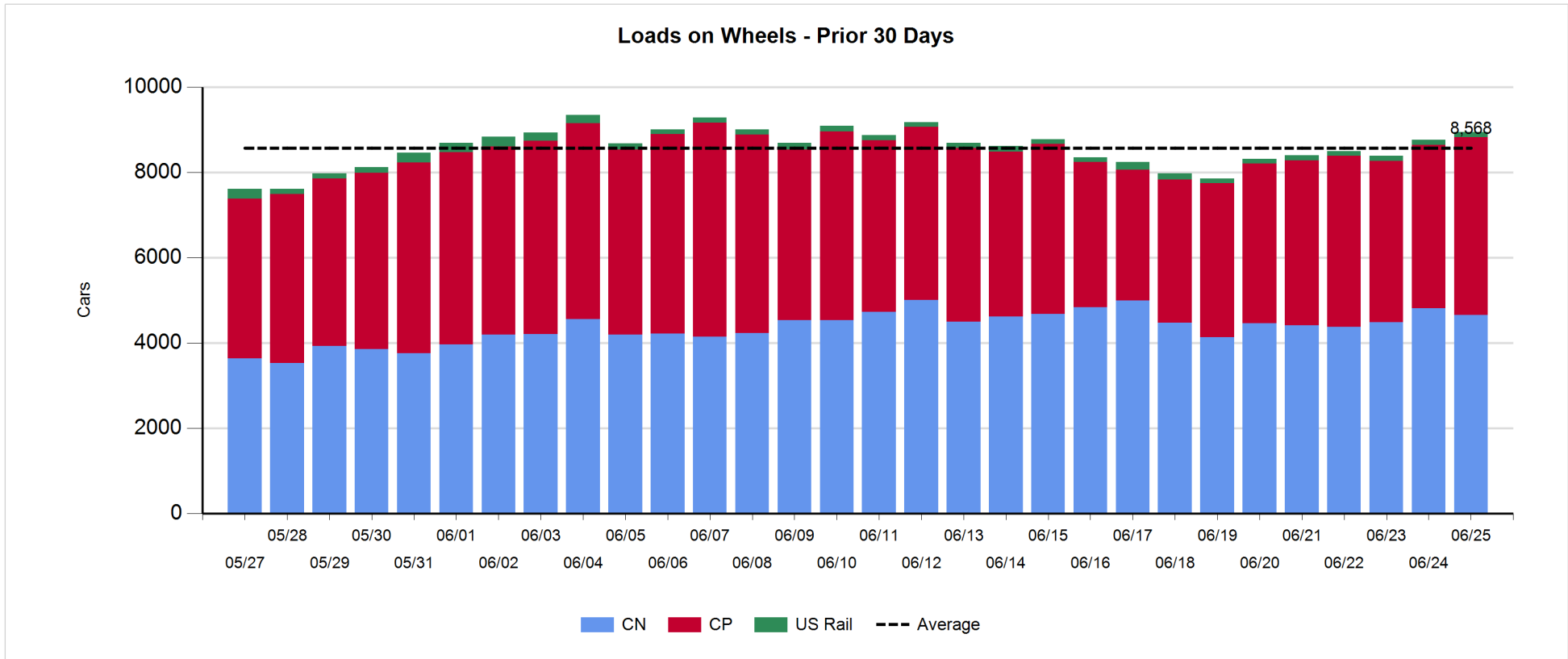
- CN and CP reported a total of 1,350 cars unloaded at the three major ports, now 24% above the trailing 30-day average. Two days in Week 48 unloads now behind last week's pace by 100 unloads, marking reduced unloads at Prince Rupert offset by higher unloads at Thunder Bay and Vancouver.
- Vancouver
 - 916 unloads, the highest seen in the last 30 days, was reported by CN and CP at the Port of Vancouver; CN - 417 and CP - 499. Two days in Week 48 unloads are tracking ahead of last week's performance by 28 unloads.
 - There are more than 650 cars on site at Vancouver with 500 cars arriving at the port in the last 24 hours.
 - CN and CP have more than 1,050 cars in British Columbia en route to Vancouver, with more than 450 cars at Kamloops and west, and 54% of traffic moving on CP.
- Prince Rupert
 - Prince Rupert reported 119 unloads, now behind last week's unloads after two days by more than 150 unloads.
 - Loads on wheels now below 1,000 cars - now at 992 cars.
 - There are more than 200 cars west of Jasper en route to Prince Rupert.
 - There are 8 cars on site at Prince Rupert with 1 cars arriving at the port in the last 24 hours.
- Thunder Bay
 - 315 unloads were reported at Thunder Bay yesterday. Two days in Week 48 unloads are tracking ahead of last week's pace by 50 unloads.
 - There are nearly 950 cars on site at Thunder Bay with more than 250 cars arriving at the port in the prior 24 hours.
 - There are around 250 cars en route to Thunder Bay from Winnipeg and east.

Daily Loads on Wheels - 6/25/2019

	E Canada	Prince Rupert	Thunder Bay	USA/MEX	Vancouver	Total
CN	345	992	548	83	2,678	4,646
CP	141		1,240	206	2,592	4,179
Short Line	6				50	56
US Rail				59		59
	492	992	1,788	348	5,320	8,940

Change in Loads on Wheels - Prior 24 Hours

	E Canada	Prince Rupert	Thunder Bay	USA/MEX	Vancouver	Total
CN	-86	-107	-13	-1	46	-161
CP	1		201	100	45	347
Short Line	-2				4	2
US Rail				-3		-3
	-87	-107	188	96	95	185

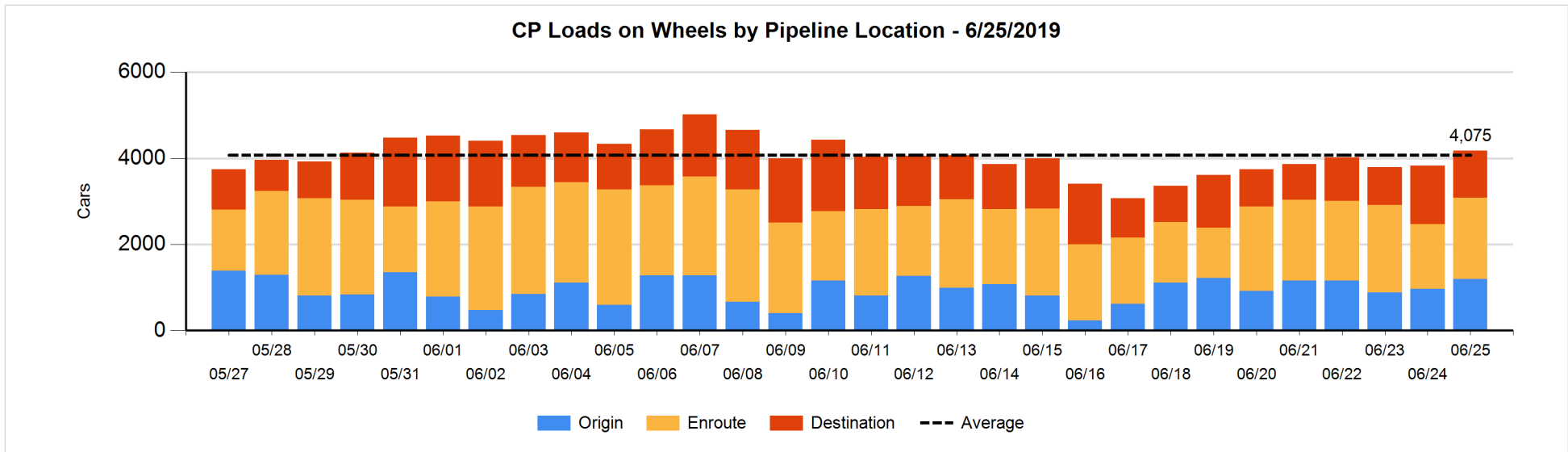
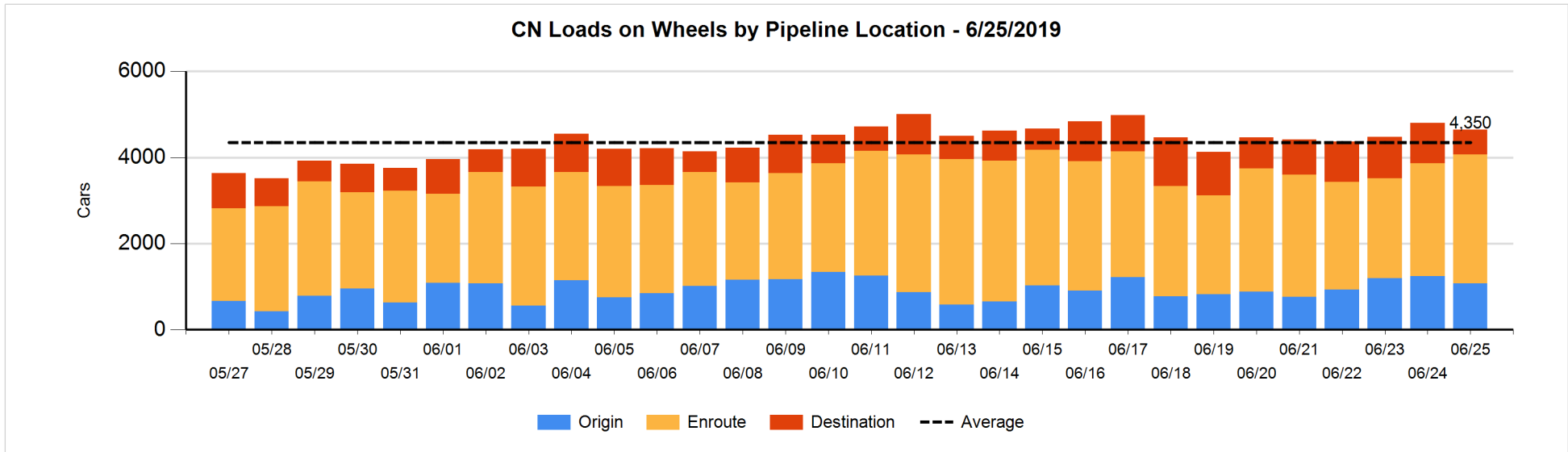


Daily Loads on Wheels By Pipeline Location - 6/25/2019

	E Canada	Prince Rupert	Thunder Bay	USA/MEX	Vancouver	Total
CN						
Origin	1	225		9	839	1,074
Enroute	252	759	230	59	1,697	2,997
Destination	92	8	318	15	142	575
	345	992	548	83	2,678	4,646
CP						
Origin	2		435	2	756	1,195
Enroute	130		186	204	1,363	1,883
Destination	9		619		473	1,101
	141		1,240	206	2,592	4,179
US Rail / Short Line						
Origin						
Enroute				33		33
Destination	6			26	50	82
	6			59	50	115

Change in Daily Loads on Wheels By Pipeline Location - Prior 24 Hours

	E Canada	Prince Rupert	Thunder Bay	USA/MEX	Vancouver	Total
CN						
Origin	0	-122	-75	-13	36	-174
Enroute	-34	134	2	7	278	387
Destination	-52	-119	60	5	-268	-374
	-86	-107	-13	-1	46	-161
CP						
Origin	1		366	-99	-35	233
Enroute	-5		-51	199	228	371
Destination	5		-114		-148	-257
	1		201	100	45	347
US Rail / Short Line						
Origin						
Enroute				-2		-2
Destination	-2			-1	4	1
	-2			-3	4	-1

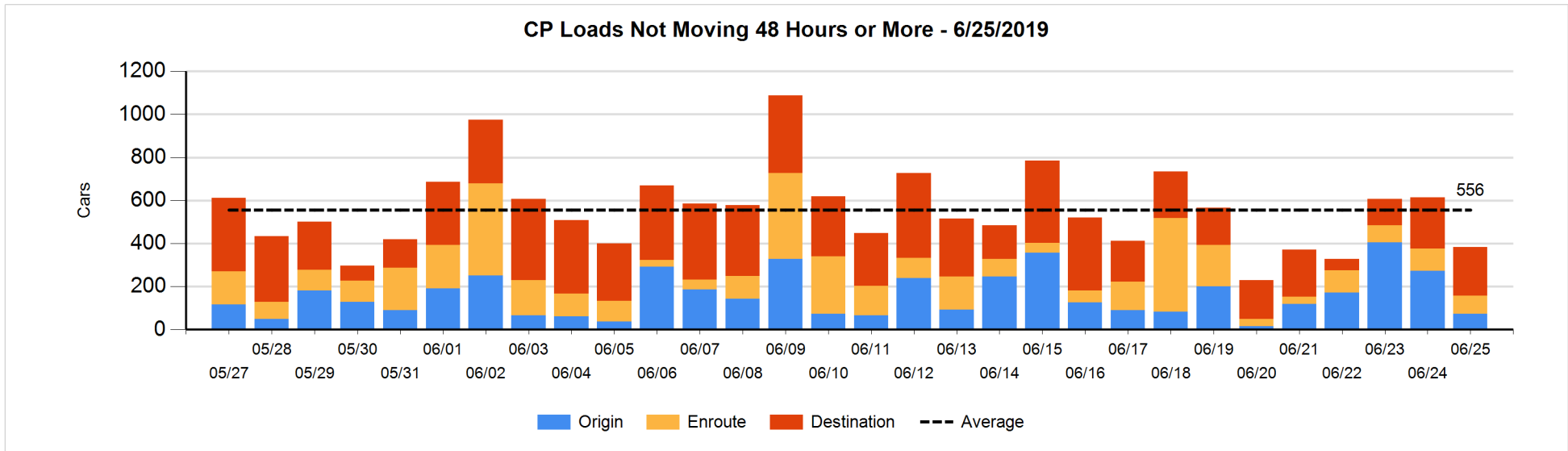
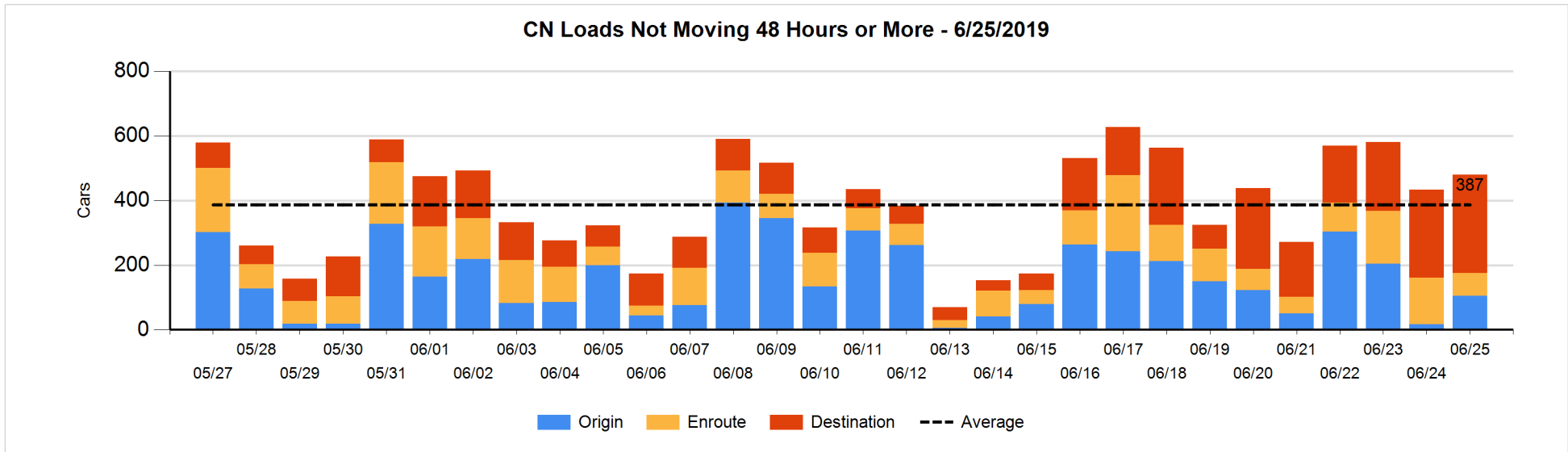


Loads Not Moving 48 Hours or More - 6/25/2019

	E Canada	Prince Rupert	Thunder Bay	USA/MEX	Vancouver	Total
CN						
Origin		2			103	105
Enroute	8	16	2	4	41	71
Destination	56		171	7	70	304
	64	18	173	11	214	480
CP						
Origin			69		3	72
Enroute	2		74		10	86
Destination	4		177		44	225
	6		320		57	383
US Rail / Short Line						
Origin						
Enroute				16		16
Destination	2			17	17	36
	2			33	17	52

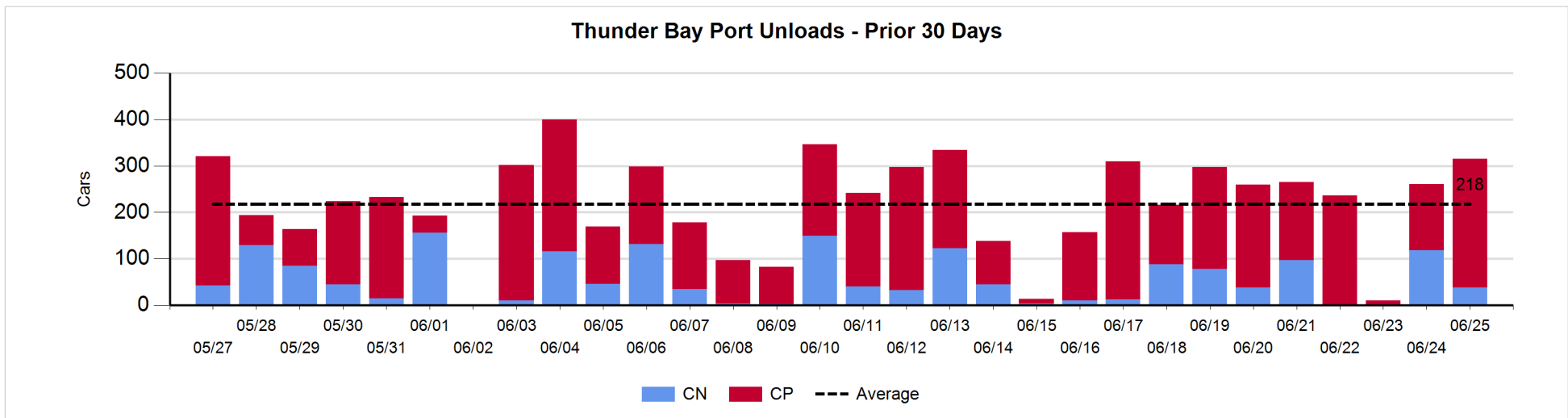
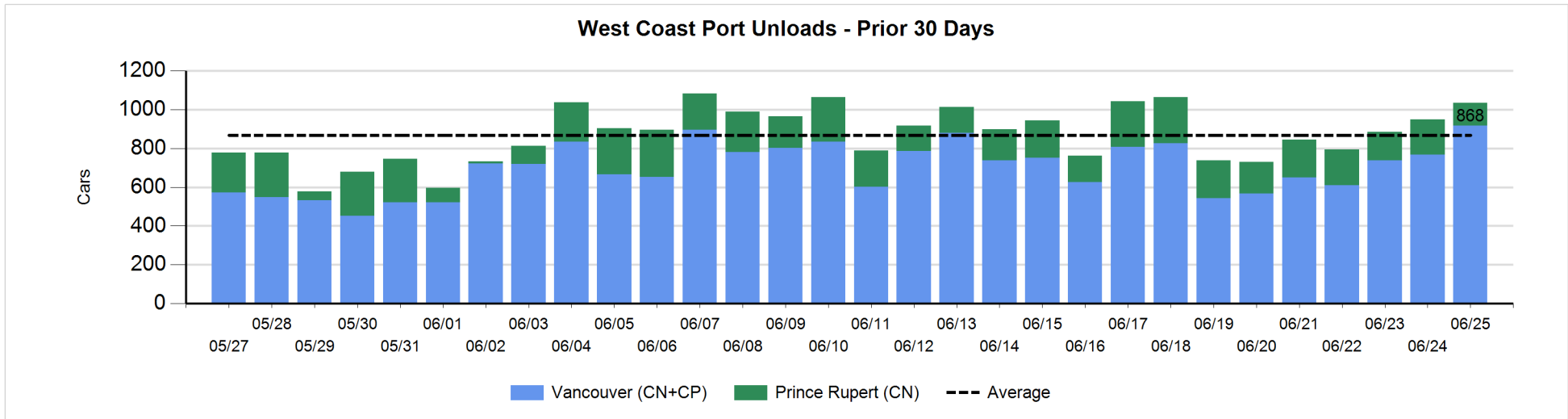
Change in Loads Not Moving 48 Hours or More - 6/25/2019

	E Canada	Prince Rupert	Thunder Bay	USA/MEX	Vancouver	Total
CN						
Origin		0		-14	103	89
Enroute	-35	5	0	0	-44	-74
Destination	-8	-2	44	-3	1	32
	-43	3	44	-17	60	47
CP						
Origin			0	-1	-200	-201
Enroute	1		71	-2	-87	-17
Destination	0		14		-28	-14
	1		85	-3	-315	-232
US Rail / Short Line						
Origin						
Enroute				-3		-3
Destination	0			-1	-1	-2
	0			-4	-1	-5



Port Unloads - 6/25/2019

	Prince Rupert	Vancouver	West Coast Total	Thunder Bay	Total
CN	119	417	536	38	574
CP		499	499	277	776
	119	916	1,035	315	1,350



Port Terminal Status

Vancouver

Daily Activity for 6/25/2019

	Cars Arrived	Cars Received in Interchange	Cars Delivered in Interchange	Cars Placed for Unloading	Loads on Wheels at Destination As of 6/25/2019
CN	155		6	201	142
CP	351			399	473
SRY		6		2	50

Port Unloads

	06/25	06/24	Week To Date	Last Week
CN	417	337	754	2,013
CP	499	429	928	2,729
SRY	2	8	10	65

Age Profile of Loaded Cars Waiting Placement for Unloading

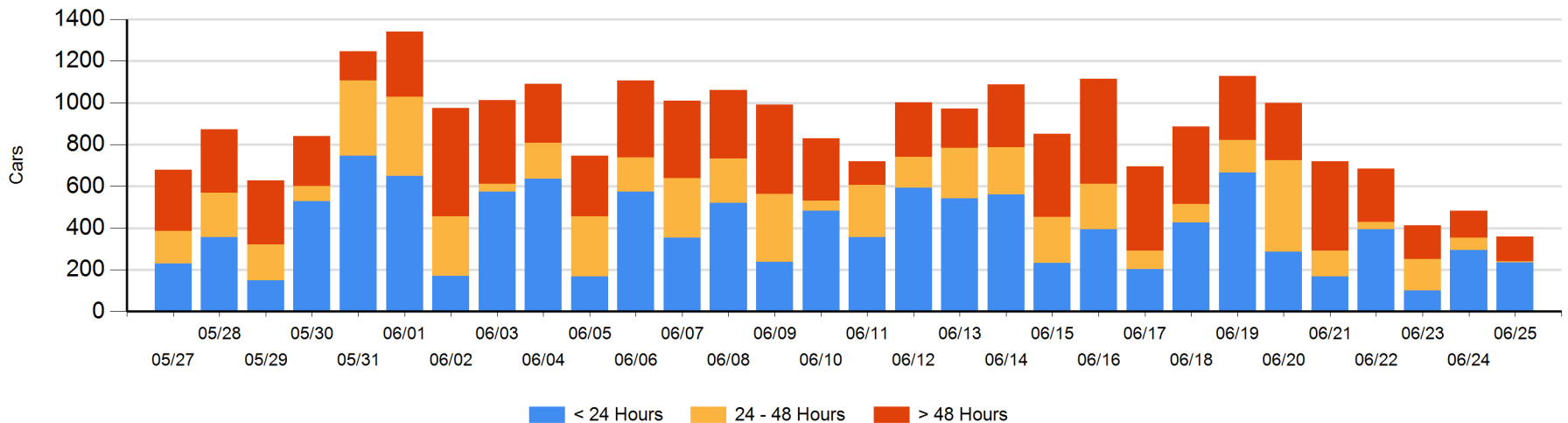
Today

	< 24 Hrs	24 - 48 Hrs	> 48-72 Hrs	> 72 Hrs	Total On Hand
CN	28		14	21	63
CP	206	6	40	43	295
SRY				1	1

Change in Last 24 Hours

	< 24 Hrs	24-48 Hrs	48 - 72 Hrs	> 72 Hrs
CN	-28	-19	14	-3
CP	-32	-34	10	-33
SRY				0

Loaded Cars on Hand Vancouver Waiting for Placement - Last 30 Days All Railways



Port Terminal Status

Prince Rupert

Daily Activity for 6/25/2019

	Cars Arrived	Cars Received in Interchange	Cars Delivered in Interchange	Cars Placed for Unloading	Loads on Wheels at Destination As of 6/25/2019
CN	1			2	8

Port Unloads

	06/25	06/24	Week To Date	Last Week
CN	119	184	303	1,357

Age Profile of Loaded Cars Waiting Placement for Unloading

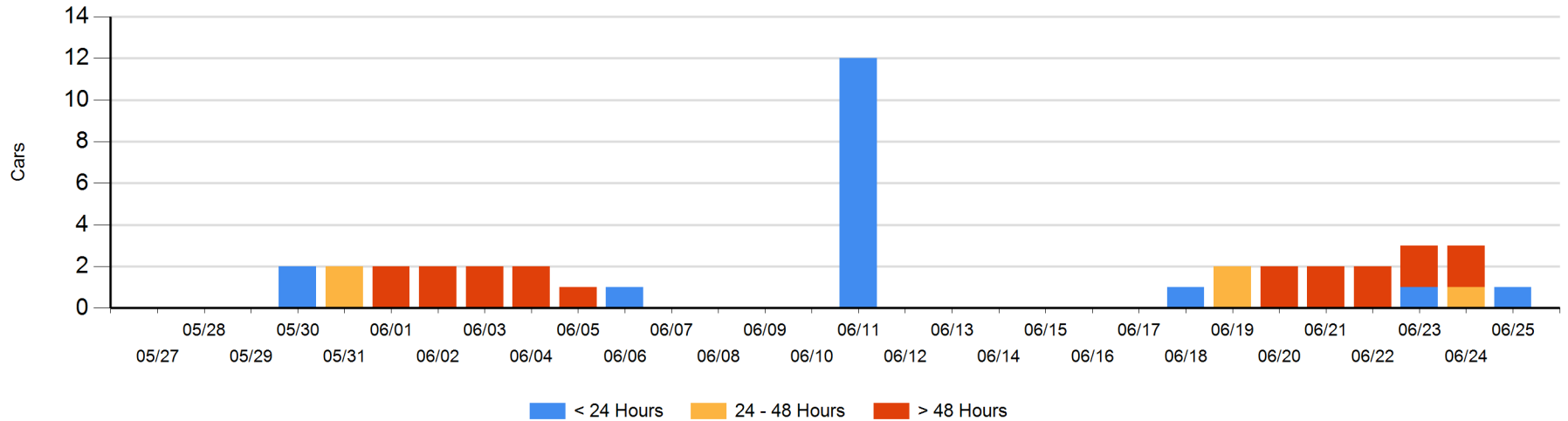
Today

	< 24 Hrs	24 - 48 Hrs	> 48-72 Hrs	> 72 Hrs	Total On Hand
CN	1				1

Change in Last 24 Hours

	< 24 Hrs	24-48 Hrs	48 - 72 Hrs	> 72 Hrs
CN	1	-1		-2

Loaded Cars on Hand Prince Rupert Waiting for Placement - Last 30 Days All Railways



Port Terminal Status

Thunder Bay

Daily Activity for 6/25/2019

	Cars Arrived	Cars Received in Interchange	Cars Delivered in Interchange	Cars Placed for Unloading	Loads on Wheels at Destination As of 6/25/2019
CN	98			37	318
CP	163			284	619

Port Unloads

	06/25	06/24	Week To Date	Last Week
CN	38	118	156	313
CP	277	143	420	1,281

Age Profile of Loaded Cars Waiting Placement for Unloading

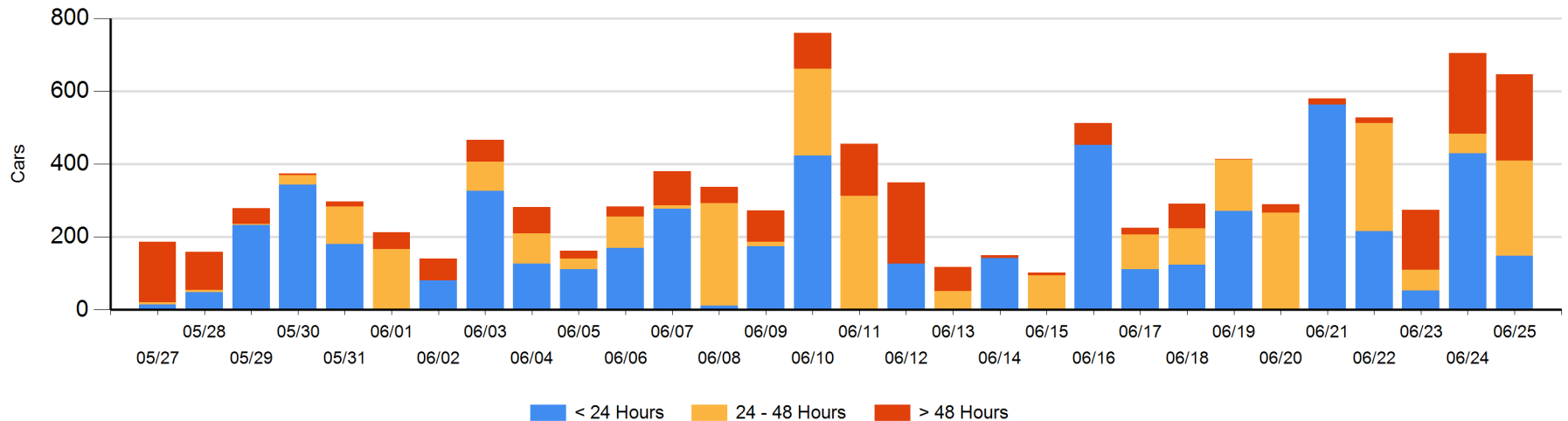
Today

	< 24 Hrs	24 - 48 Hrs	> 48-72 Hrs	> 72 Hrs	Total On Hand
CN	98		53	54	205
CP	51	261		129	441

Change in Last 24 Hours

	< 24 Hrs	24-48 Hrs	48 - 72 Hrs	> 72 Hrs
CN	68	-53	53	-7
CP	-349	261	-57	25

Loaded Cars on Hand Thunder Bay Waiting for Placement - Last 30 Days All Railways



Measurement Definitions

Loads on Wheels	<p>Count of loaded rail cars including all rail cars that have been released loaded at origin and have not been reported by the railway as unloaded at destination.</p> <p>Counts include all rail cars (hopper cars and boxcars) moving within a pipeline.</p>
Loads Not Moving	<p>Loaded rail cars for which the railways have not reported a movement event for 48 hours or more whether the rail car is at origin, enroute or at destination.</p>
Port Unloads	<p>Count of rail cars reported by railways as unloaded at the western port destinations of Vancouver, Prince Rupert and Thunder Bay.</p> <p>Unload counts include all rail cars (hopper cars and boxcars) unloaded by all receivers including major port terminals, transloaders and other receivers.</p>
Cars Arrived	<p>Count of rail cars reported as arrived at the destination railway terminal.</p>
Cars Received in Interchange	<p>Count of rail cars received in interchange by each railway within a destination railway terminal. Interchange activity is tracked for the Vancouver and Thunder Bay pipelines as applicable.</p>
Cars Delivered in Interchange	<p>Count of rail cars delivered in interchange by each railway within a destination railway terminal. Interchange activity is tracked for the Vancouver and Thunder Bay pipelines as applicable.</p>
Cars Placed for Unloading	<p>Count of rail cars reported by the railways as placed loaded at the receiver's facility for unloading.</p>
Loads on Wheels at Destination	<p>Count of rail cars that remain under load within the destination railway terminal including rail cars that have been reported as placed for unloading but not yet reported as unloaded.</p>
Waiting Placement for Unloading	<p>Count of rail cars that have been reported as arrived at the destination railway terminal but not reported as placed for unloading by the railway.</p> <p>For the Ports of Vancouver, Prince Rupert and Thunder Bay the count of rail cars waiting placement for unloading is categorized by age – i.e. the elapsed time from arrival at destination to the current report date.</p>