

SPEED READ

- Loads on wheels increased overnight, reflecting a rise in CN volumes offset by lower CP volumes. On a net basis, volumes rose due to higher traffic in the Prince Rupert and Vancouver corridors offset by lower volumes in the USA/MEX and E. Canada corridors.
- Network fluidity improved overnight, led by a decline in idle car counts on both CN and CP by 26% (-682) and 12% (-351), respectively. The total count of cars for 4+ days on both railways increased 5% (+145) overnight - presently at 3,180 cars.
- One day in Week 32 unloads now behind prior week's performance by less than 250 unloads, marking lower unloads across all three major ports - Vancouver, Thunder Bay and Prince Rupert.

Loads on Wheels

- Loads on wheels increased 3% (+321) overnight, due to higher volumes on CN offset by lower traffic on CP - combined total at 10,858 and 3% above the trailing 30-day average.
- On a net basis, the increase in loads on wheels indicates higher volumes in the Prince Rupert and Vancouver corridors offset by lower volumes in the USA/MEX and E. Canada corridors.
- CN volumes increased significantly by 11% (+599) overnight, with higher traffic in the Vancouver, Prince Rupert and USA/MEX corridors offset by lower volumes in the E. Canada corridor. System wide CN loads on wheels currently at 5,923 and 6% above the trailing 30-day average.
- CP volumes declined 5% (-242) overnight, driven by a decline in traffic across all corridors other than E. Canada. CP system wide loads on wheels currently at 4,705 and 1% below the trailing 30-day average.
- Vancouver presently at 6,632, rose 3% (+166) overnight, now 1% above the trailing 30-day average.
- The Prince Rupert pipeline presently at 1,944, increased significantly by 16% (+267) overnight, and 20% above the trailing 30-day average.
- Thunder Bay volumes remained unchanged (0) overnight - presently at 121, the highest seen in the last 30 days, and 162% above the trailing 30-day average., with 96% of traffic moving on CP.

Hopper Car Rationing

- CN rationed 637 hopper cars in week 30.

Loads Not Moving

- **The count of cars not moving for 48+ hours declined 19% (-1,033) overnight, reflecting lower counts on both CN and CP. Idle car counts presently at 4,433 and 10% above the trailing 30-day average.**
- CN
 - **The count of idle cars for 48+ hours decreased 26% (-682) overnight - presently at 1,899 cars.**
 - The number of cars idle for 4+ days declined 11% (-195) overnight - presently at 1,595 cars.
 - The count of cars not moving for 7+ days rose 4% (+34) overnight - presently at 895 cars.
 - Vancouver represents 47% of all idle cars.
 - In total 75% of all idle cars are dwelling at origin locations.
- CP
 - **CP idle car counts for 48+ hours fell 12% (-351) overnight - presently at 2,534 cars.**
 - The number of cars idle for 4+ days increased 27% (+340) overnight - presently at 1,585 cars.

- The number of cars idle for 7+ days declined 18% (-137) overnight - presently at 638 cars.
- Vancouver accounts for 81% of all idle cars.
- In total 76% of all idle cars are dwelling at origin locations.

Port Performance

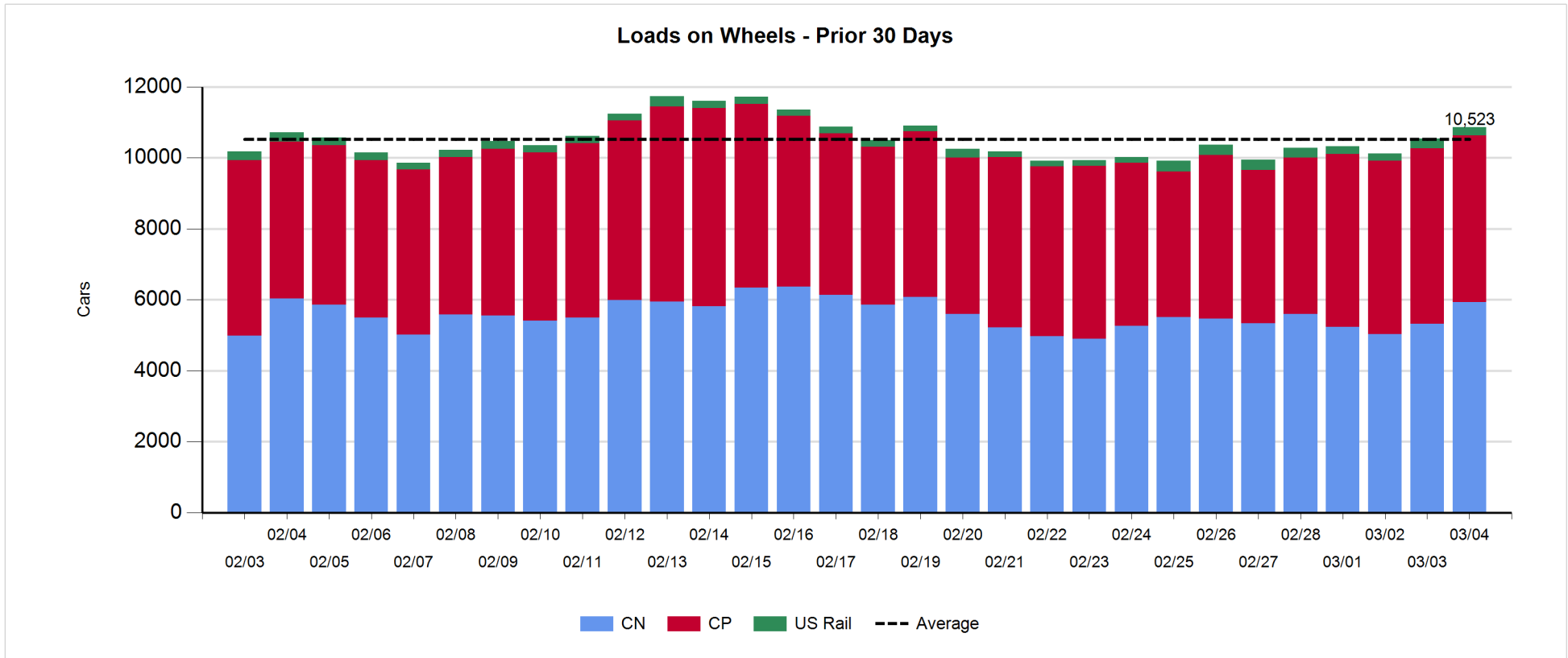
- CN and CP reported a total of 533 cars unloaded at the three major ports, now 30% below the trailing 30-day average. One day in Week 32 unloads now behind last week's pace by fewer than 250 unloads, marking lower unloads across all three major ports - Vancouver, Thunder Bay and Prince Rupert.
- Vancouver
 - 533 unloads reported by CN and CP at the Port of Vancouver; CN - 268 and CP - 265. One day in Week 32 unloads are tracking behind last week's performance by more than 50 unloads.
 - There are more than 150 cars on site at Vancouver with 400 cars arriving at the port in the last 24 hours.
 - CN and CP have more than 900 cars in British Columbia en route to Vancouver, with fewer than 300 cars at Kamloops and west, and 62% of traffic moving on CP.
- Prince Rupert
 - Prince Rupert reported zero unloads, now behind last week's unloads after one day by more than 150 unloads.
 - Loads on wheels now above 1,000 cars - presently at 1,944 cars.
 - There are 500 cars west of Jasper en route to Prince Rupert.
 - There are 24 cars on site at Prince Rupert with zero cars arriving at the port in the last 24 hours.
- Thunder Bay
 - Zero unloads were reported at Thunder Bay yesterday. One day in Week 32 unloads are tracking behind last week's pace by 2 unloads.
 - There are more than 50 cars on site at Thunder Bay with 50 cars arriving at the port in the prior 24 hours.
 - There are zero cars en route to Thunder Bay from Winnipeg and east.

Daily Loads on Wheels - 3/4/2019

	E Canada	Prince Rupert	Thunder Bay	USA/MEX	Vancouver	Total
CN	635	1,944	5	251	3,088	5,923
CP	496		116	601	3,492	4,705
Short Line	5				52	57
US Rail				173		173
	1,136	1,944	121	1,025	6,632	10,858

Change in Loads on Wheels - Prior 24 Hours

	E Canada	Prince Rupert	Thunder Bay	USA/MEX	Vancouver	Total
CN	-77	267	0	6	403	599
CP	24		0	-37	-229	-242
Short Line	1				-8	-7
US Rail				-29		-29
	-52	267	0	-60	166	321

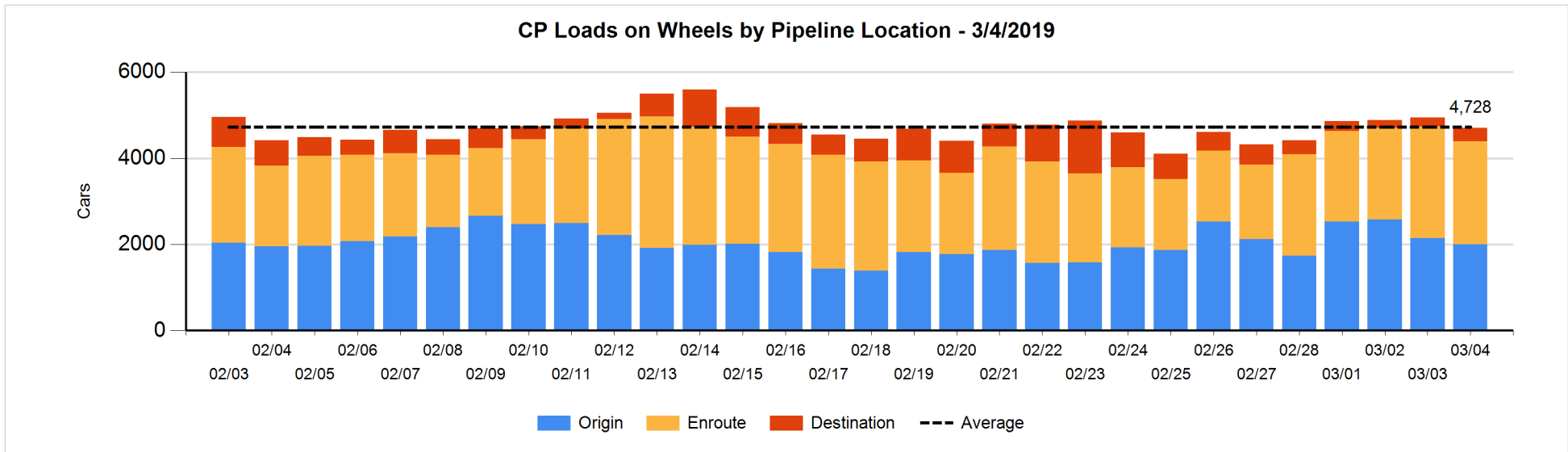
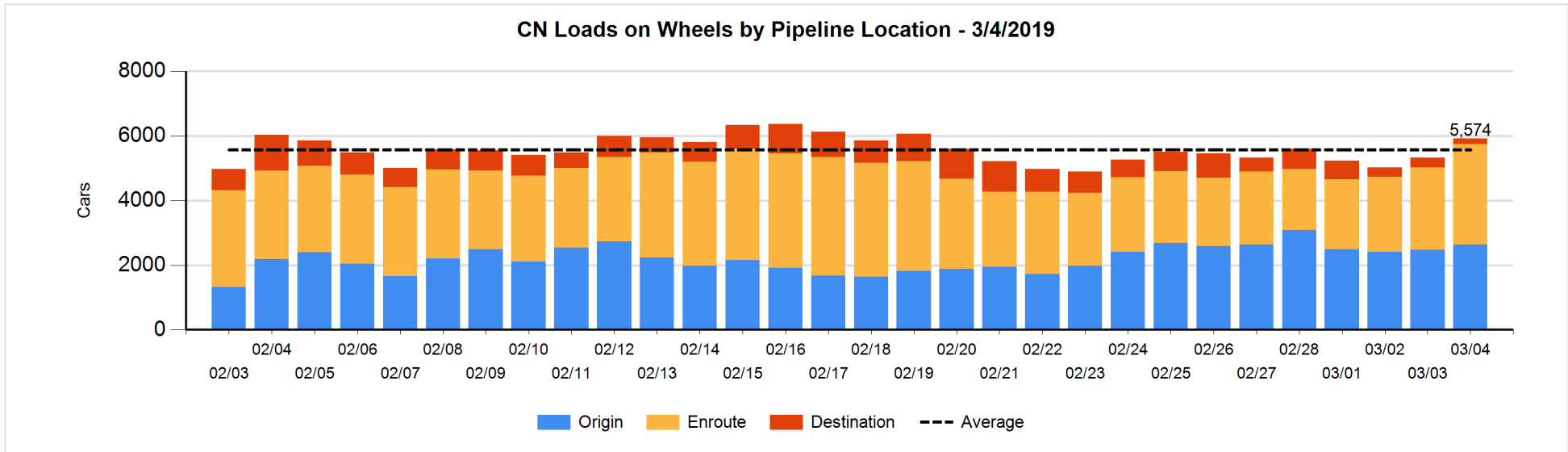


Daily Loads on Wheels By Pipeline Location - 3/4/2019

	E Canada	Prince Rupert	Thunder Bay	USA/MEX	Vancouver	Total
CN						
Origin	138	842		62	1,589	2,631
Enroute	434	1,078		153	1,446	3,111
Destination	63	24	5	36	53	181
	635	1,944	5	251	3,088	5,923
CP						
Origin	29			229	1,740	1,998
Enroute	342		55	313	1,679	2,389
Destination	125		61	59	73	318
	496		116	601	3,492	4,705
US Rail / Short Line						
Origin						
Enroute	5			100		105
Destination				73	52	125
	5			173	52	230

Change in Daily Loads on Wheels By Pipeline Location - Prior 24 Hours

	E Canada	Prince Rupert	Thunder Bay	USA/MEX	Vancouver	Total
CN						
Origin	-48	-93		4	287	150
Enroute	16	360		-19	209	566
Destination	-45	0	0	21	-93	-117
	-77	267	0	6	403	599
CP						
Origin	25			0	-167	-142
Enroute	-119		-56	-37	-6	-218
Destination	118		56	0	-56	118
	24		0	-37	-229	-242
US Rail / Short Line						
Origin						
Enroute	1			-24		-23
Destination				-5	-8	-13
	1			-29	-8	-36

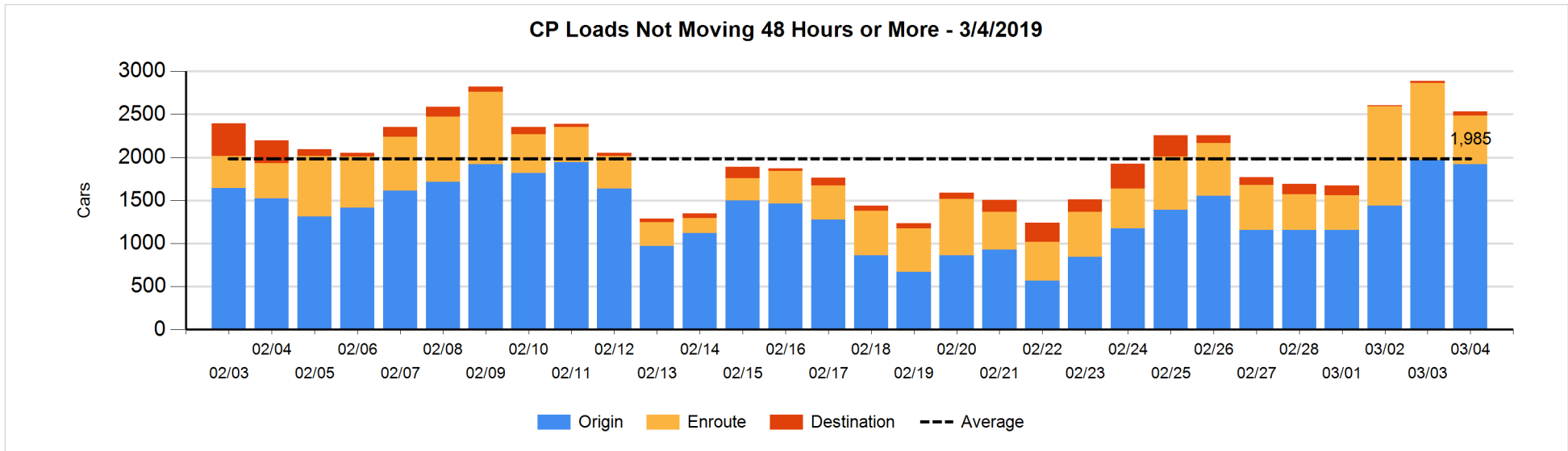
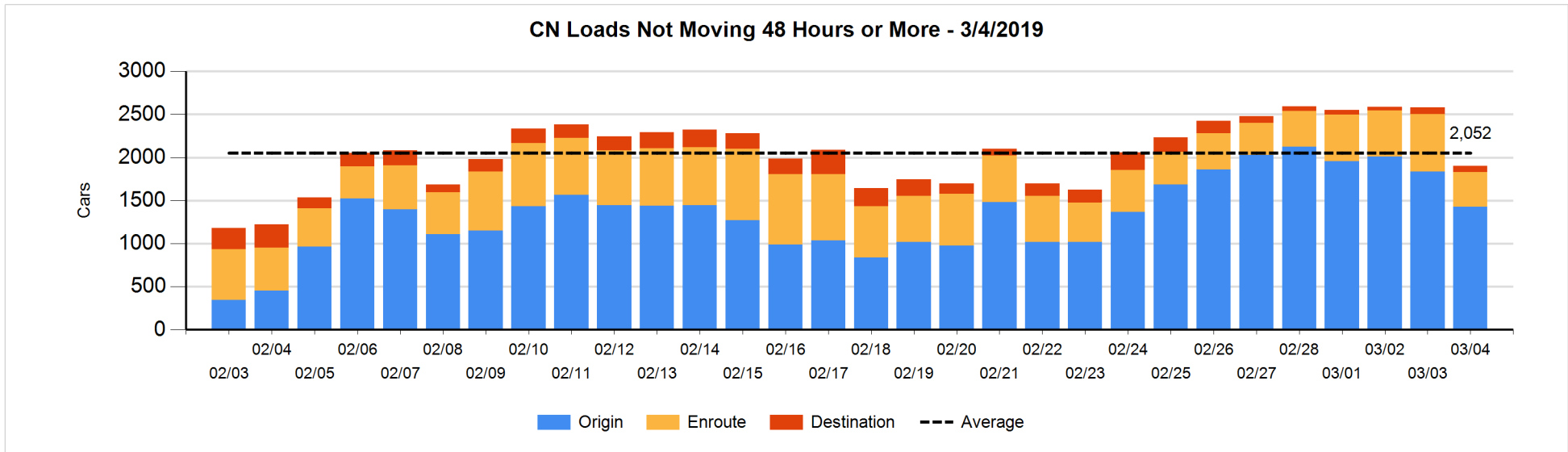


Loads Not Moving 48 Hours or More - 3/4/2019

	E Canada	Prince Rupert	Thunder Bay	USA/MEX	Vancouver	Total
CN						
Origin	51	524		57	794	1426
Enroute	134	134		43	94	405
Destination	21	14	5	15	13	68
	206	672	5	115	901	1899
CP						
Origin	4			229	1688	1921
Enroute	100			143	318	561
Destination	7		5		40	52
	111		5	372	2046	2534
US Rail / Short Line						
Origin						
Enroute				24		24
Destination				44	24	68
				68	24	92

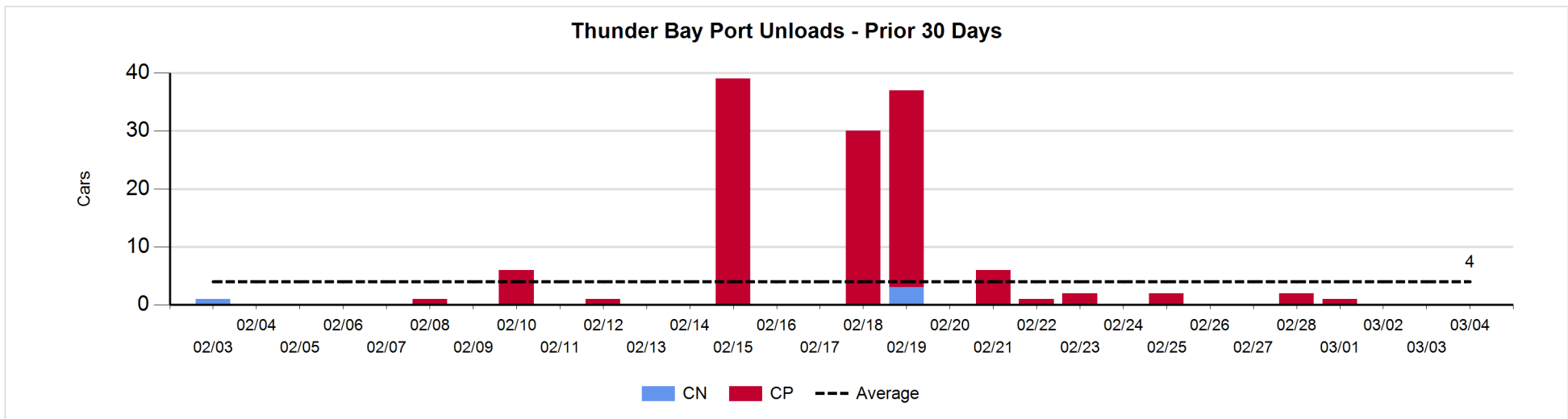
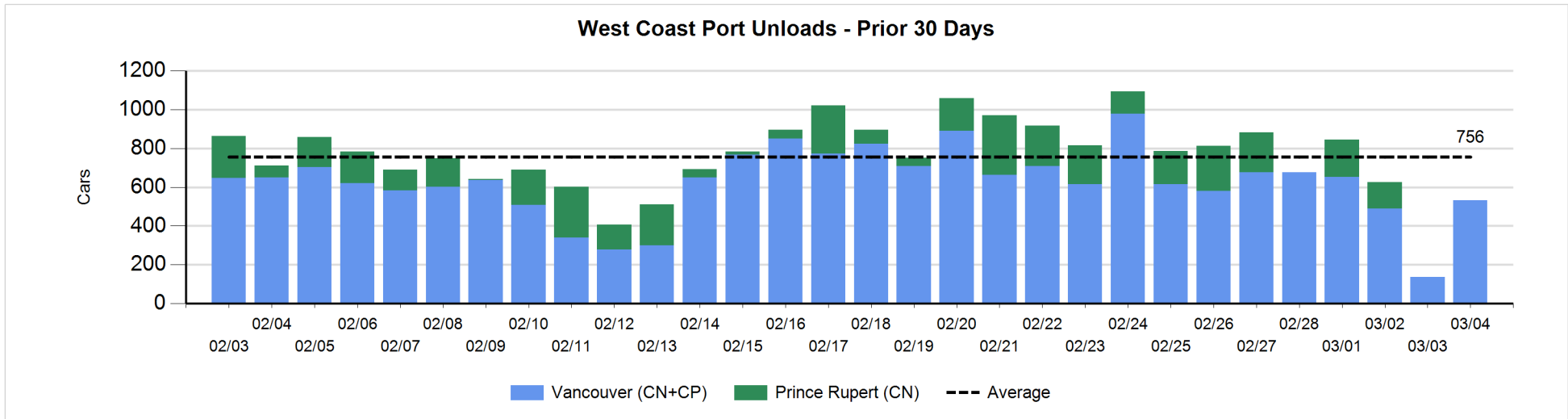
Change in Loads Not Moving 48 Hours or More - 3/4/2019

	E Canada	Prince Rupert	Thunder Bay	USA/MEX	Vancouver	Total
CN						
Origin	-49	-150		-1	-208	-408
Enroute	-124	0		-46	-95	-265
Destination	-10	0	5	0	-4	-9
	-183	-150	5	-47	-307	-682
CP						
Origin	1			8	-58	-49
Enroute	1			-3	-328	-330
Destination	6		0		22	28
	8		0	5	-364	-351
US Rail / Short Line						
Origin						
Enroute				8		8
Destination				16	8	24
				24	8	32



Port Unloads - 3/4/2019

	Prince Rupert	Vancouver	West Coast Total	Thunder Bay	Total
CN		268	268		268
CP		265	265		265
		533	533		533



Port Terminal Status

Vancouver

Daily Activity for 3/4/2019

	Cars Arrived	Cars Received in Interchange	Cars Delivered in Interchange	Cars Placed for Unloading	Loads on Wheels at Destination As of 3/4/2019
CN	175		14	186	53
CP	223	2	15	213	73
SRY		27		20	52

Port Unloads

	03/04	03/03	Week To Date	Last Week
CN	268	136	268	2,127
CP	265	1	265	1,698
SRY	23		23	63

Age Profile of Loaded Cars Waiting Placement for Unloading

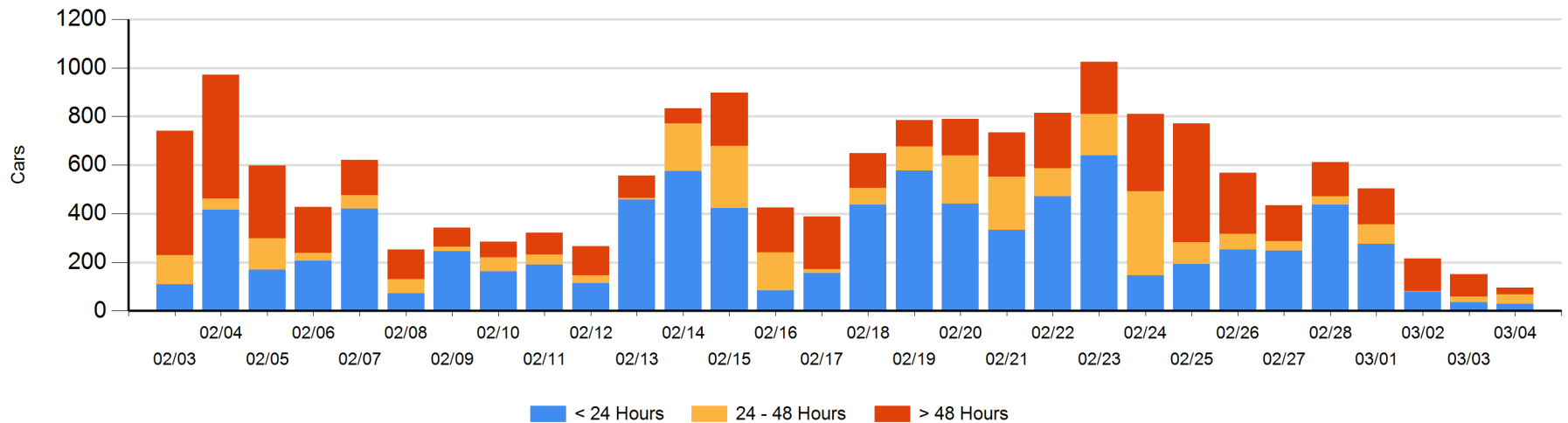
Today

	< 24 Hrs	24 - 48 Hrs	> 48-72 Hrs	> 72 Hrs	Total On Hand
CN	21	12	1	4	38
CP	7	27		24	58
SRY					0

Change in Last 24 Hours

	< 24 Hrs	24-48 Hrs	48 - 72 Hrs	> 72 Hrs
CN	9	-8	0	-3
CP	-17	24		-60
SRY				

Loaded Cars on Hand Vancouver Waiting for Placement - Last 30 Days All Railways



Port Terminal Status

Prince Rupert

Daily Activity for 3/4/2019

Cars Arrived	Cars Received in Interchange	Cars Delivered in Interchange	Cars Placed for Unloading	Loads on Wheels at Destination As of 3/4/2019
CN				24

Port Unloads

	03/04	03/03	Week To Date	Last Week
CN				940

Age Profile of Loaded Cars Waiting Placement for Unloading

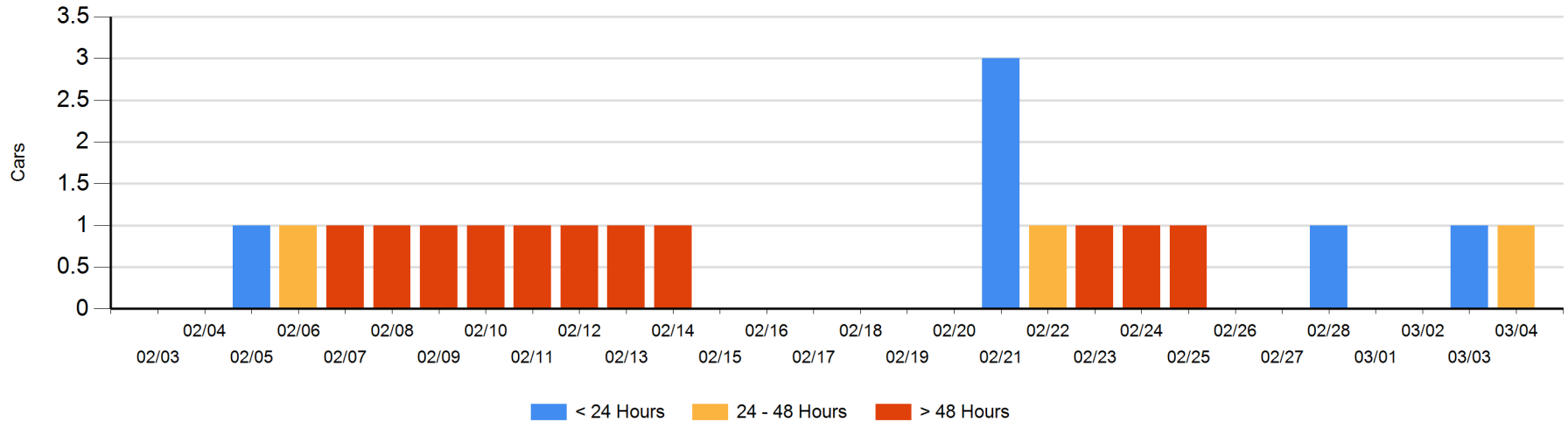
Today

	< 24 Hrs	24 - 48 Hrs	> 48-72 Hrs	> 72 Hrs	Total On Hand
CN		1			1

Change in Last 24 Hours

	< 24 Hrs	24-48 Hrs	48 - 72 Hrs	> 72 Hrs
CN	-1	1		

Loaded Cars on Hand Prince Rupert Waiting for Placement - Last 30 Days All Railways



Port Terminal Status

Thunder Bay

Daily Activity for 3/4/2019

	Cars Arrived	Cars Received in Interchange	Cars Delivered in Interchange	Cars Placed for Unloading	Loads on Wheels at Destination As of 3/4/2019
CN					5
CP	56				61

Port Unloads

	03/04	03/03	Week To Date	Last Week
CN				
CP				5

Age Profile of Loaded Cars Waiting Placement for Unloading

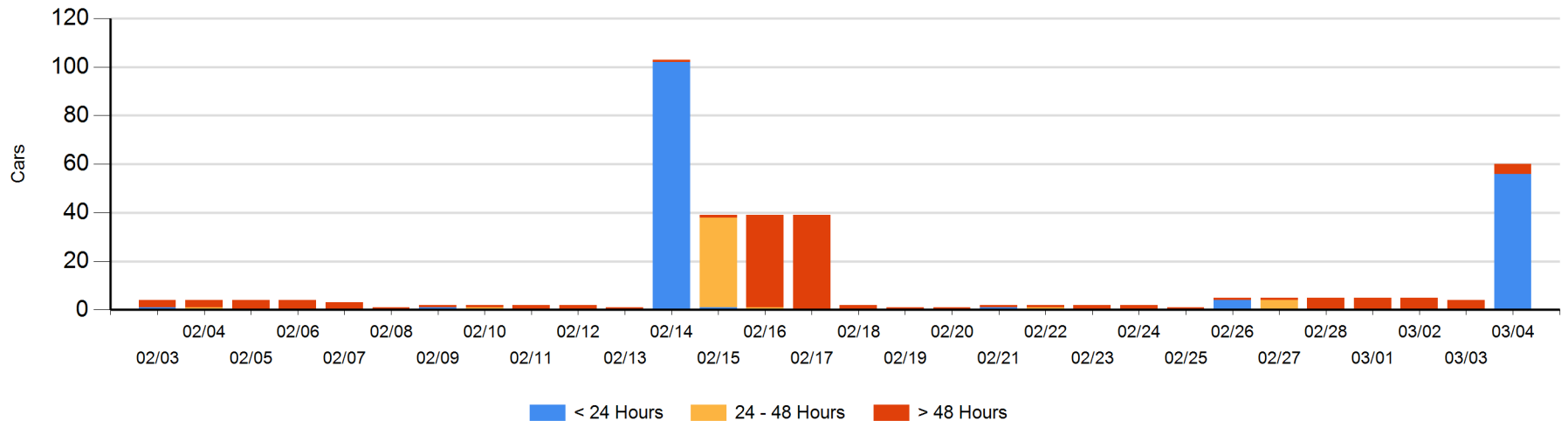
Today

	< 24 Hrs	24 - 48 Hrs	> 48-72 Hrs	> 72 Hrs	Total On Hand
CN				4	4
CP	56				56

Change in Last 24 Hours

	< 24 Hrs	24-48 Hrs	48 - 72 Hrs	> 72 Hrs
CN				0
CP	56			

Loaded Cars on Hand Thunder Bay Waiting for Placement - Last 30 Days All Railways



Measurement Definitions

Loads on Wheels	<p>Count of loaded rail cars including all rail cars that have been released loaded at origin and have not been reported by the railway as unloaded at destination.</p> <p>Counts include all rail cars (hopper cars and boxcars) moving within a pipeline.</p>
Loads Not Moving	<p>Loaded rail cars for which the railways have not reported a movement event for 48 hours or more whether the rail car is at origin, enroute or at destination.</p>
Port Unloads	<p>Count of rail cars reported by railways as unloaded at the western port destinations of Vancouver, Prince Rupert and Thunder Bay.</p> <p>Unload counts include all rail cars (hopper cars and boxcars) unloaded by all receivers including major port terminals, transloaders and other receivers.</p>
Cars Arrived	<p>Count of rail cars reported as arrived at the destination railway terminal.</p>
Cars Received in Interchange	<p>Count of rail cars received in interchange by each railway within a destination railway terminal. Interchange activity is tracked for the Vancouver and Thunder Bay pipelines as applicable.</p>
Cars Delivered in Interchange	<p>Count of rail cars delivered in interchange by each railway within a destination railway terminal. Interchange activity is tracked for the Vancouver and Thunder Bay pipelines as applicable.</p>
Cars Placed for Unloading	<p>Count of rail cars reported by the railways as placed loaded at the receiver's facility for unloading.</p>
Loads on Wheels at Destination	<p>Count of rail cars that remain under load within the destination railway terminal including rail cars that have been reported as placed for unloading but not yet reported as unloaded.</p>
Waiting Placement for Unloading	<p>Count of rail cars that have been reported as arrived at the destination railway terminal but not reported as placed for unloading by the railway.</p> <p>For the Ports of Vancouver, Prince Rupert and Thunder Bay the count of rail cars waiting placement for unloading is categorized by age – i.e. the elapsed time from arrival at destination to the current report date.</p>