

SPEED READ

- Loads on wheels increased overnight, marking an increase in CN traffic offset by reduced CP volumes. On a net basis, volumes rose due to higher traffic in the E. Canada and Prince Rupert corridors offset by lower traffic in the Vancouver, Thunder Bay and USA/MEX corridors.
- Network fluidity improved overnight, led by a decline in idle car counts on both CN and CP by 2% (-48) and 21% (-427), respectively. The total count of cars for 4+ days on both railways decreased 27% (-907) overnight - presently at 2,416 cars.
- Three days in Week 32 unloads now behind prior week's performance by 550 unloads, marking lower unloads at Vancouver and Prince Rupert offset by improved week over week performance at Thunder Bay.

Loads on Wheels

- Loads on wheels increased for the fourth consecutive day, up 3% (+313) overnight, due to higher traffic on CN offset by reduced traffic on CP - combined total at 11,759, the highest seen in the last 30 days, and 11% above the trailing 30-day average.
- On a net basis, the rise in loads on wheels reflects higher volumes in the E. Canada and Prince Rupert corridors offset by lower traffic in the Vancouver, Thunder Bay and USA/MEX corridors.
- CN volumes rose 9% (+514) overnight, with higher volumes in the Vancouver, E. Canada and Prince Rupert corridors offset by lower traffic in the USA/MEX corridor. System wide CN loads on wheels presently at 6,396, the highest seen in the last 30 days, and 14% above the trailing 30-day average.
- CP volumes decreased 4% (-201) overnight, driven by a decline in traffic in the Vancouver and Thunder Bay corridors offset by a rise in volumes in the E. Canada and USA/MEX corridors. CP system wide loads on wheels presently at 5,176 and 8% above the trailing 30-day average.
- Vancouver currently at 7,044, decreased marginally by 1% (-83) overnight, now 6% above the trailing 30-day average.
- The Prince Rupert pipeline currently at 2,066, the highest seen in the last 30 days, increased 6% (+120) overnight, and 25% above the trailing 30-day average.
- Thunder Bay volumes declined significantly by 16% (-32) overnight - currently at 174 and 197% above the trailing 30-day average., with 97% of traffic moving on CP.

Hopper Car Rationing

- CN rationed 637 hopper cars in week 30.

Loads Not Moving

- **The count of cars not moving for 48+ hours fell 12% (-475) overnight and have now decreased for the third consecutive day, reflecting reduced counts on both CN and CP. Idle car counts currently at 3,518 and 13% below the trailing 30-day average.**
- CN
 - **The count of idle cars for 48+ hours decreased 2% (-48) overnight and have now decreased for the fourth consecutive day - now at 1,881 cars.**
 - The number of cars idle for 4+ days declined for the third consecutive day, down 38% (-522) overnight - presently at 859 cars.
 - The count of cars not moving for 7+ days decreased 35% (-284) overnight - presently at 537 cars.
 - Vancouver represents 50% of all idle cars.
 - In total 84% of all idle cars are dwelling at origin locations.
- CP
 - **CP idle car counts for 48+ hours decreased for the third consecutive day, down 21% (-427) overnight - presently at 1,637 cars.**

- The number of cars idle for 4+ days fell 20% (-385) overnight - presently at 1,557 cars.
- The number of cars idle for 7+ days decreased 11% (-90) overnight - now at 752 cars.
- Vancouver accounts for 90% of all idle cars.
- In total 78% of all idle cars are dwelling at origin locations.

Port Performance

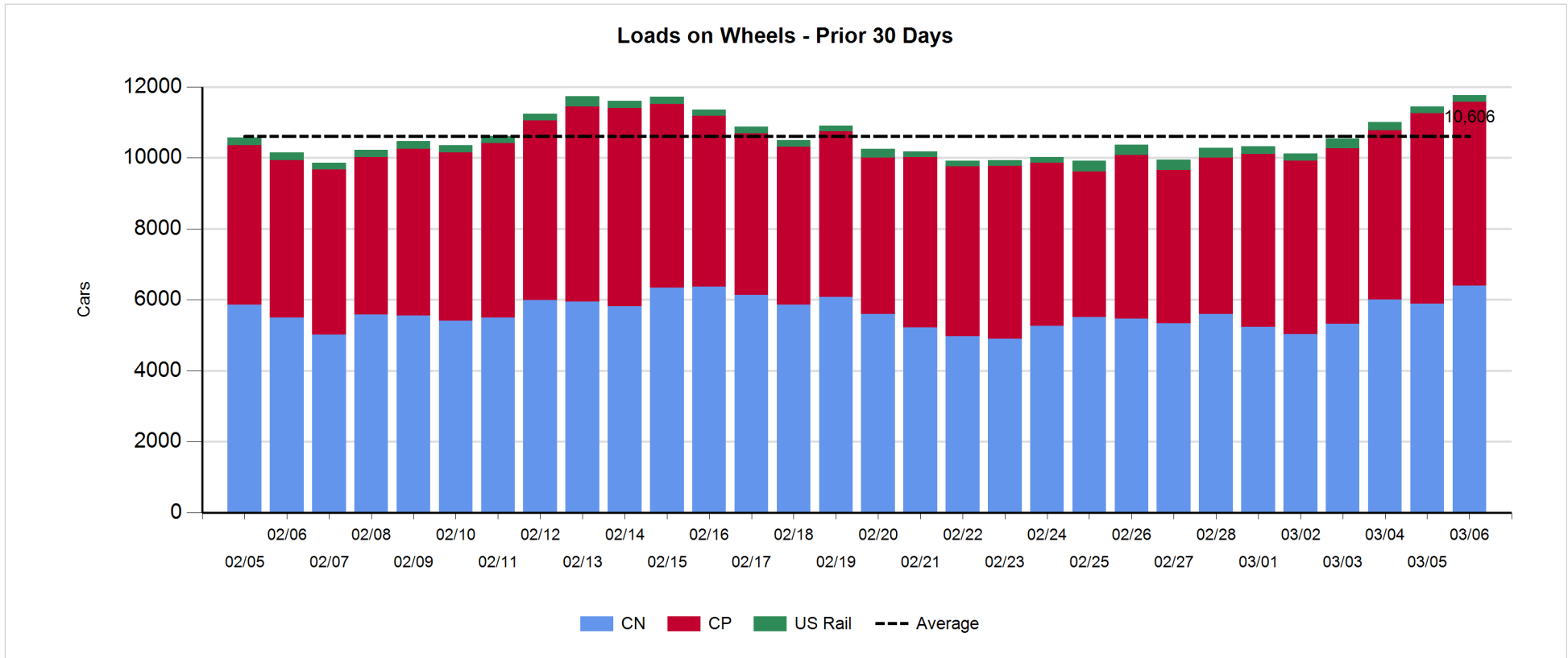
- CN and CP reported a total of 819 cars unloaded at the three major ports, now 9% above the trailing 30-day average. Three days in Week 32 unloads now behind last week's pace by 550 unloads, marking lower unloads at Vancouver and Prince Rupert offset by higher unloads at Thunder Bay.
- Vancouver
 - 710 unloads reported by CN and CP at the Port of Vancouver; CN - 214 and CP - 496. Three days in Week 32 unloads are tracking behind last week's performance by 300 unloads.
 - There are 450 cars on site at Vancouver with more than 500 cars arriving at the port in the last 24 hours.
 - CN and CP have more than 1,000 cars in British Columbia en route to Vancouver, with 650 cars at Kamloops and west, and 55% of traffic moving on CP.
- Prince Rupert
 - Prince Rupert reported 77 unloads, now behind last week's unloads after three days by 300 unloads.
 - Loads on wheels now above 1,000 cars - now at 2,066 cars.
 - There are 650 cars west of Jasper en route to Prince Rupert.
 - There are 15 cars on site at Prince Rupert with 6 cars arriving at the port in the last 24 hours.
- Thunder Bay
 - 32 unloads were reported at Thunder Bay yesterday. Three days in Week 32 unloads are tracking ahead of last week's pace by 50 unloads.
 - There are 9 cars on site at Thunder Bay with zero cars arriving at the port in the prior 24 hours.
 - There are 50 cars en route to Thunder Bay from Winnipeg and east.

Daily Loads on Wheels - 3/6/2019

	E Canada	Prince Rupert	Thunder Bay	USA/MEX	Vancouver	Total
CN	883	2,066	5	201	3,241	6,396
CP	647		169	595	3,765	5,176
Short Line	5				38	43
US Rail				144		144
	1,535	2,066	174	940	7,044	11,759

Change in Loads on Wheels - Prior 24 Hours

	E Canada	Prince Rupert	Thunder Bay	USA/MEX	Vancouver	Total
CN	181	120	0	-45	258	514
CP	146		-32	18	-333	-201
Short Line	0				-8	-8
US Rail				8		8
	327	120	-32	-19	-83	313

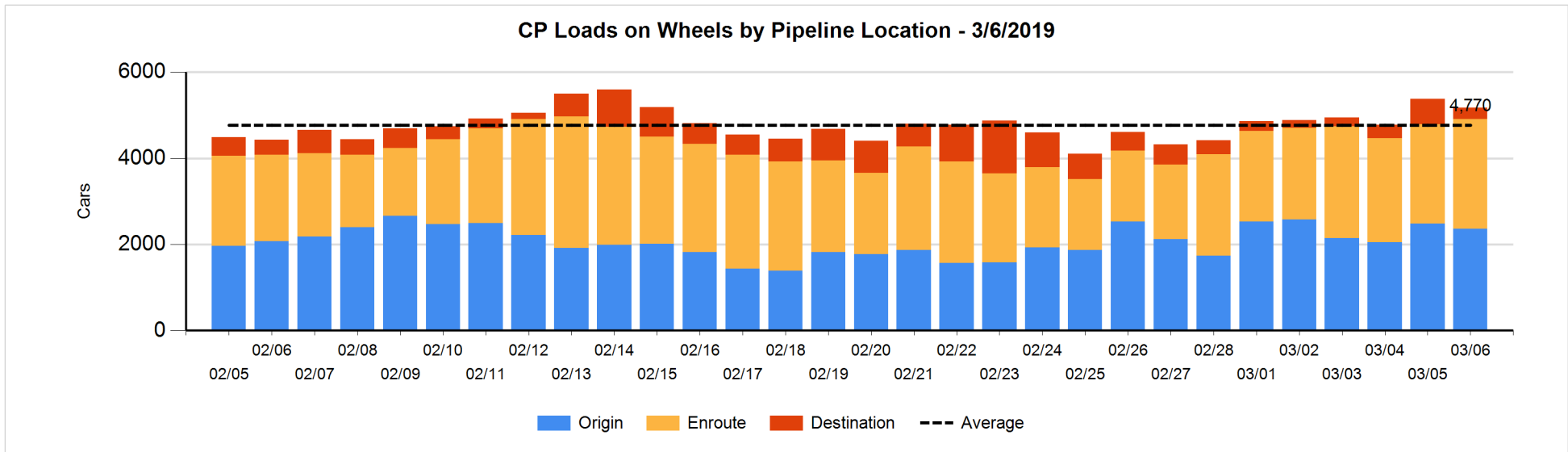
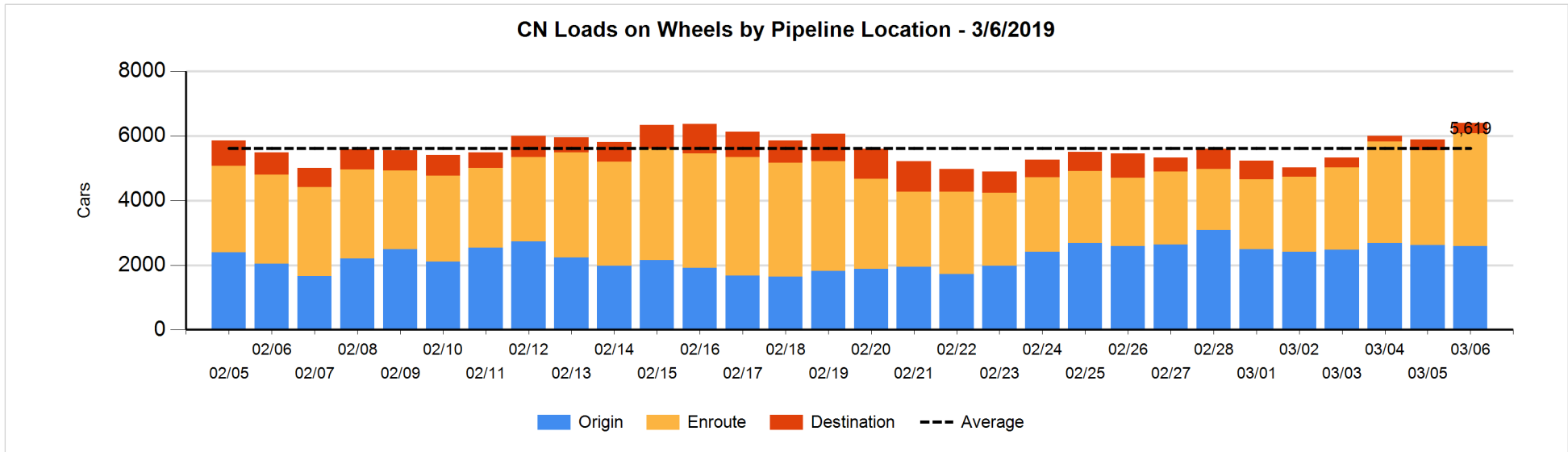


Daily Loads on Wheels By Pipeline Location - 3/6/2019

	E Canada	Prince Rupert	Thunder Bay	USA/MEX	Vancouver	Total
CN						
Origin	391	909		60	1,221	2,581
Enroute	382	1,142		115	1,867	3,506
Destination	110	15	5	26	153	309
	883	2,066	5	201	3,241	6,396
CP						
Origin	232		1	206	1,926	2,365
Enroute	414		164	389	1,578	2,545
Destination	1		4		261	266
	647		169	595	3,765	5,176
US Rail / Short Line						
Origin						
Enroute	4			50		54
Destination	1			94	38	133
	5			144	38	187

Change in Daily Loads on Wheels By Pipeline Location - Prior 24 Hours

	E Canada	Prince Rupert	Thunder Bay	USA/MEX	Vancouver	Total
CN						
Origin	195	78		4	-312	-35
Enroute	-66	113		-48	573	572
Destination	52	-71	0	-1	-3	-23
	181	120	0	-45	258	514
CP						
Origin	120		-109	-26	-101	-116
Enroute	88		109	79	-42	234
Destination	-62		-32	-35	-190	-319
	146		-32	18	-333	-201
US Rail / Short Line						
Origin						
Enroute	-1			-21		-22
Destination	1			29	-8	22
	0			8	-8	0

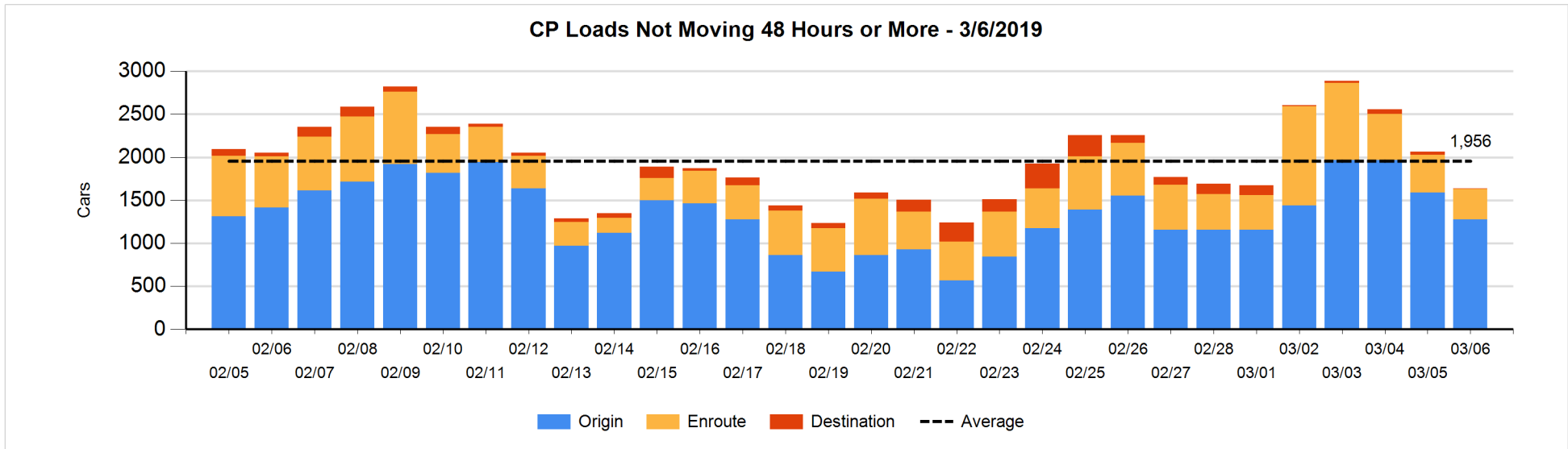
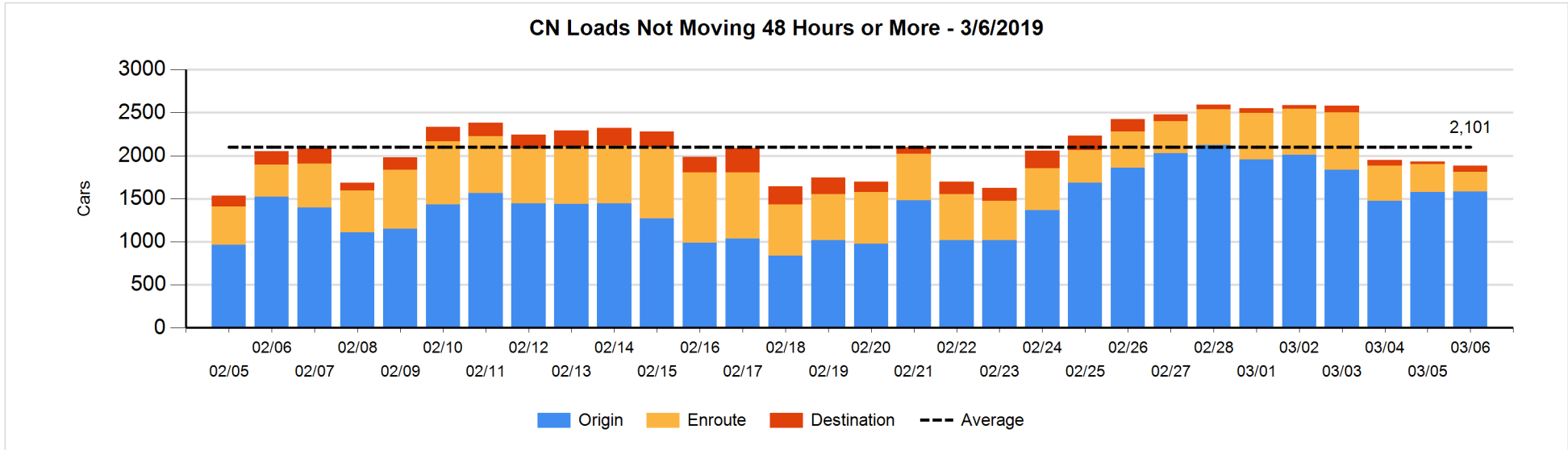


Loads Not Moving 48 Hours or More - 3/6/2019

	E Canada	Prince Rupert	Thunder Bay	USA/MEX	Vancouver	Total
CN						
Origin	137	526		50	869	1582
Enroute	116	43		9	62	230
Destination	35	9		13	12	69
	288	578		72	943	1881
CP						
Origin	7			84	1183	1274
Enroute	28			43	288	359
Destination			4			4
	35		4	127	1471	1637
US Rail / Short Line						
Origin						
Enroute	4			19		23
Destination				46	28	74
	4			65	28	97

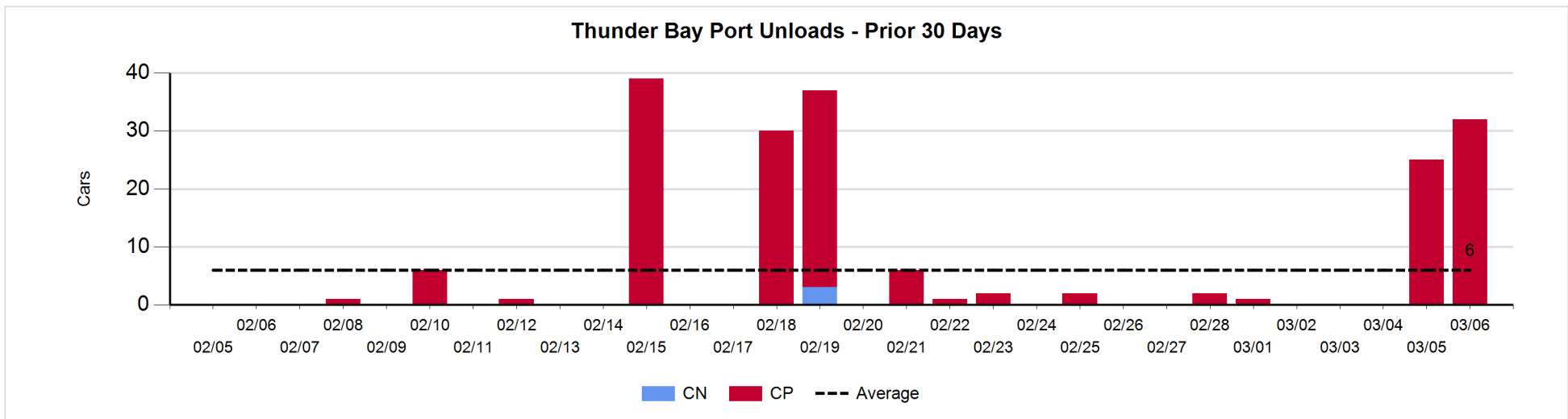
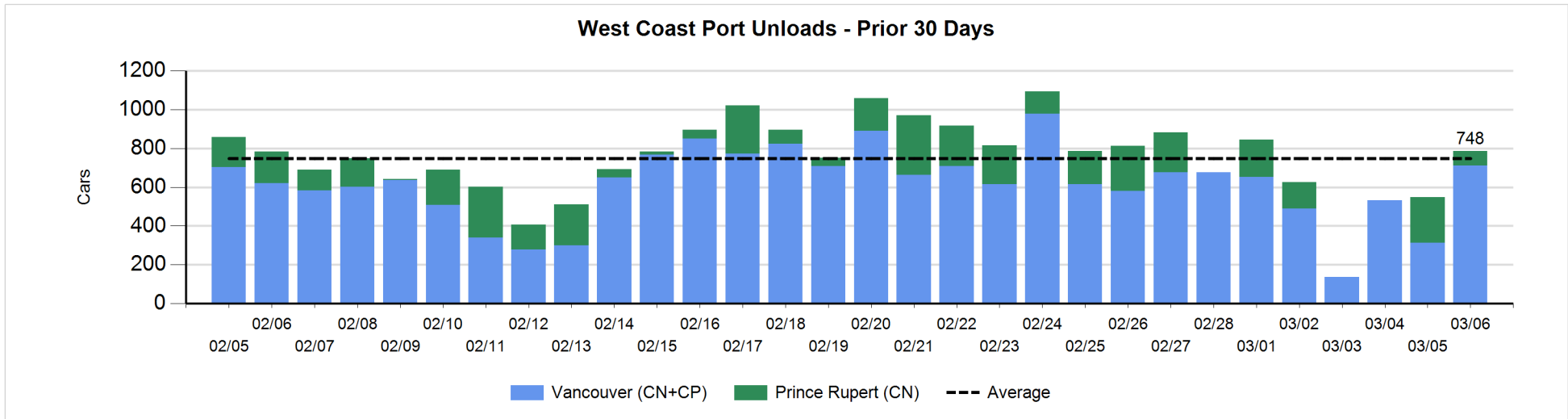
Change in Loads Not Moving 48 Hours or More - 3/6/2019

	E Canada	Prince Rupert	Thunder Bay	USA/MEX	Vancouver	Total
CN						
Origin	0	49		0	-47	2
Enroute	11	-53		-18	-29	-89
Destination	30	0		7	2	39
	41	-4		-11	-74	-48
CP						
Origin	-100			-119	-95	-314
Enroute	-45			-8	-30	-83
Destination			0	-13	-17	-30
	-145		0	-140	-142	-427
US Rail / Short Line						
Origin						
Enroute	0			-27		-27
Destination				6	18	24
	0			-21	18	-3



Port Unloads - 3/6/2019

	Prince Rupert	Vancouver	West Coast Total	Thunder Bay	Total
CN	77	214	291		291
CP		496	496	32	528
	77	710	787	32	819



Port Terminal Status

Vancouver

Daily Activity for 3/6/2019

	Cars Arrived	Cars Received in Interchange	Cars Delivered in Interchange	Cars Placed for Unloading	Loads on Wheels at Destination As of 3/6/2019
CN	202	111		242	153
CP	313		115	369	261
SRY		4		17	38

Port Unloads

	03/06	03/05	Week To Date	Last Week
CN	214	121	603	2,127
CP	496	192	953	1,698
SRY	9	6	38	63

Age Profile of Loaded Cars Waiting Placement for Unloading

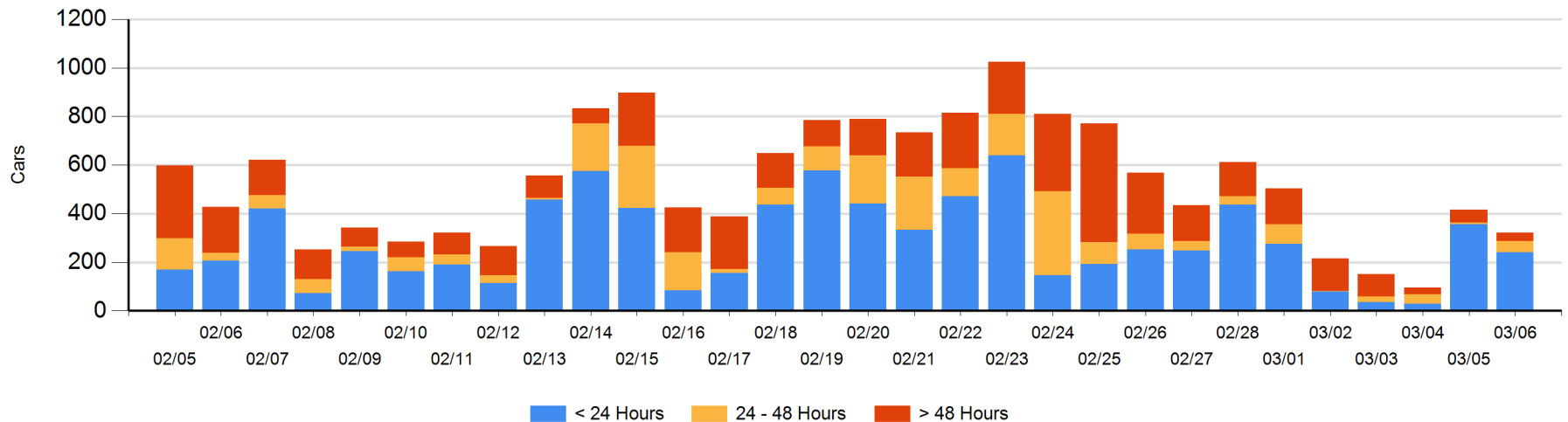
Today

	< 24 Hrs	24 - 48 Hrs	> 48-72 Hrs	> 72 Hrs	Total On Hand
CN	68	7		10	85
CP	172	41		24	237
SRY					0

Change in Last 24 Hours

	< 24 Hrs	24-48 Hrs	48 - 72 Hrs	> 72 Hrs
CN	52	7	-12	5
CP	-169	34	-15	5
SRY				

Loaded Cars on Hand Vancouver Waiting for Placement - Last 30 Days All Railways



Port Terminal Status

Prince Rupert

Daily Activity for 3/6/2019

	Cars Arrived	Cars Received in Interchange	Cars Delivered in Interchange	Cars Placed for Unloading	Loads on Wheels at Destination As of 3/6/2019
CN	6				15

Port Unloads

	03/06	03/05	Week To Date	Last Week
CN	77	235	312	940

Age Profile of Loaded Cars Waiting Placement for Unloading

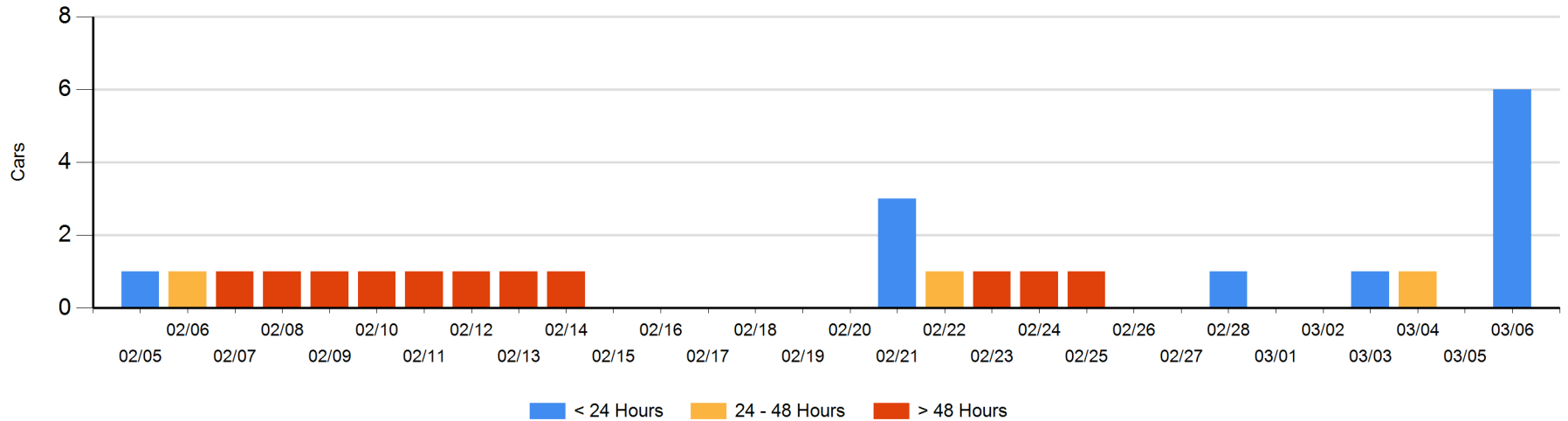
Today

	< 24 Hrs	24 - 48 Hrs	> 48-72 Hrs	> 72 Hrs	Total On Hand
CN	6				6

Change in Last 24 Hours

	< 24 Hrs	24-48 Hrs	48 - 72 Hrs	> 72 Hrs
CN	6			

Loaded Cars on Hand Prince Rupert Waiting for Placement - Last 30 Days All Railways



Port Terminal Status

Thunder Bay

Daily Activity for 3/6/2019

	Cars Arrived	Cars Received in Interchange	Cars Delivered in Interchange	Cars Placed for Unloading	Loads on Wheels at Destination As of 3/6/2019
CN					5
CP					4

Port Unloads

	03/06	03/05	Week To Date	Last Week
CN				
CP	32	25	57	5

Age Profile of Loaded Cars Waiting Placement for Unloading

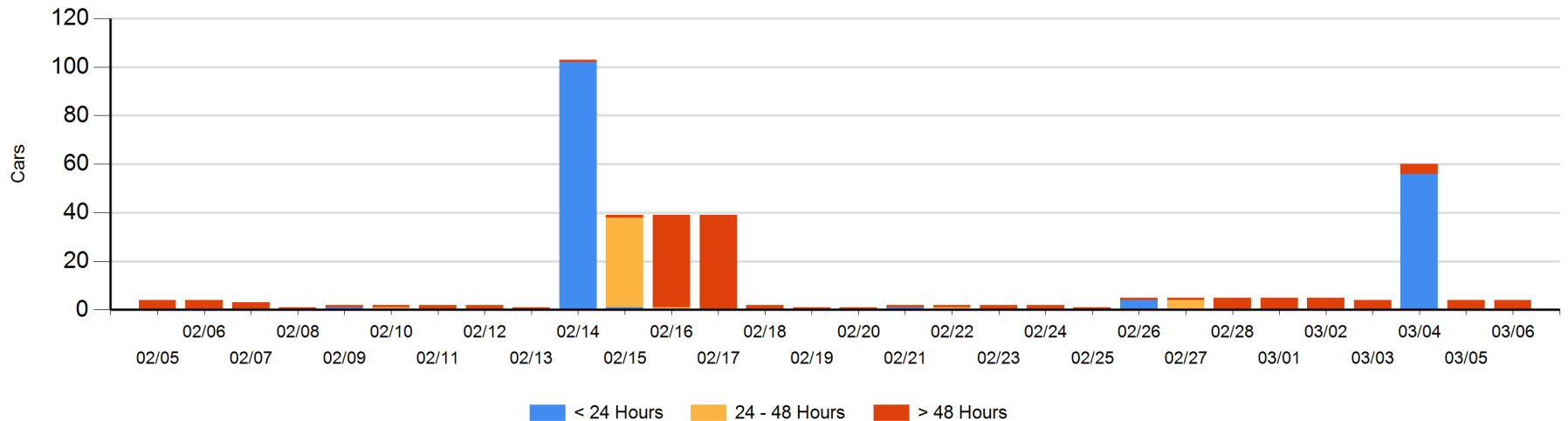
Today

	< 24 Hrs	24 - 48 Hrs	> 48-72 Hrs	> 72 Hrs	Total On Hand
CN				4	4
CP					0

Change in Last 24 Hours

	< 24 Hrs	24-48 Hrs	48 - 72 Hrs	> 72 Hrs
CN				0
CP				

Loaded Cars on Hand Thunder Bay Waiting for Placement - Last 30 Days All Railways



Measurement Definitions

Loads on Wheels	<p>Count of loaded rail cars including all rail cars that have been released loaded at origin and have not been reported by the railway as unloaded at destination.</p> <p>Counts include all rail cars (hopper cars and boxcars) moving within a pipeline.</p>
Loads Not Moving	<p>Loaded rail cars for which the railways have not reported a movement event for 48 hours or more whether the rail car is at origin, enroute or at destination.</p>
Port Unloads	<p>Count of rail cars reported by railways as unloaded at the western port destinations of Vancouver, Prince Rupert and Thunder Bay.</p> <p>Unload counts include all rail cars (hopper cars and boxcars) unloaded by all receivers including major port terminals, transloaders and other receivers.</p>
Cars Arrived	<p>Count of rail cars reported as arrived at the destination railway terminal.</p>
Cars Received in Interchange	<p>Count of rail cars received in interchange by each railway within a destination railway terminal. Interchange activity is tracked for the Vancouver and Thunder Bay pipelines as applicable.</p>
Cars Delivered in Interchange	<p>Count of rail cars delivered in interchange by each railway within a destination railway terminal. Interchange activity is tracked for the Vancouver and Thunder Bay pipelines as applicable.</p>
Cars Placed for Unloading	<p>Count of rail cars reported by the railways as placed loaded at the receiver's facility for unloading.</p>
Loads on Wheels at Destination	<p>Count of rail cars that remain under load within the destination railway terminal including rail cars that have been reported as placed for unloading but not yet reported as unloaded.</p>
Waiting Placement for Unloading	<p>Count of rail cars that have been reported as arrived at the destination railway terminal but not reported as placed for unloading by the railway.</p> <p>For the Ports of Vancouver, Prince Rupert and Thunder Bay the count of rail cars waiting placement for unloading is categorized by age – i.e. the elapsed time from arrival at destination to the current report date.</p>