

SPEED READ

- Loads on wheels increased overnight, reflecting an increase in both CN and CP volumes. On a net basis, volumes increased due to higher traffic in the Prince Rupert, Vancouver and USA/MEX corridors offset by lower traffic in the E. Canada and Thunder Bay corridors.
- Network fluidity improved overnight, led by a decline in idle car counts on both CN and CP by 4% (-64) and 14% (-113), respectively. The total count of cars for 4+ days on both railways gained 22% (+208) overnight - now at 1,150 cars.
- One day in Week 35 unloads now ahead of prior week's performance by 250 unloads, reflecting improved week over week performance at Vancouver and Thunder Bay offset by lower unloads at Prince Rupert.

Loads on Wheels

- Loads on wheels increased 3% (+329) overnight, due to higher traffic on both CN and CP - combined total at 10,419 and 2% below the trailing 30-day average.
- On a net basis, the rise in loads on wheels reflects higher traffic in the Prince Rupert, Vancouver and USA/MEX corridors offset by lower traffic in the E. Canada and Thunder Bay corridors.
- CN volumes increased marginally by 1% (+57) overnight, with higher traffic in the Prince Rupert corridor offset by lower traffic in the Vancouver, E. Canada, Thunder Bay and USA/MEX corridors. System wide CN loads on wheels currently at 5,856 and in line with the trailing 30-day average.
- CP volumes gained 7% (+272) overnight and have now increased for the fourth consecutive day, driven by an increase in volumes in the Vancouver and USA/MEX corridors offset by a decline in traffic in the Thunder Bay and E. Canada corridors. CP system wide loads on wheels currently at 4,236 and 7% below the trailing 30-day average.
- Vancouver presently at 5,489, rose 3% (+146) overnight, now 12% below the trailing 30-day average.
- The Prince Rupert pipeline now at 2,195, the highest seen in the last 30 days, increased significantly by 29% (+490) overnight, and 25% above the trailing 30-day average.
- Thunder Bay volumes fell significantly by 38% (-110) overnight - now at 179 and 11% below the trailing 30-day average, with 82% of traffic moving on CP.

Hopper Car Rationing

- CN rationed 1,370 hopper cars in week 33.

Loads Not Moving

- **The count of cars not moving for 48+ hours decreased 7% (-177) overnight, reflecting lower counts on both CN and CP. Idle car counts currently at 2,343 and 35% below the trailing 30-day average.**
- CN
 - **The count of idle cars for 48+ hours fell 4% (-64) overnight - presently at 1,621 cars.**
 - The number of cars idle for 4+ days surged by 73% (+312) overnight - currently at 739 cars.
 - The count of cars not moving for 7+ days increased significantly by 167% (+154) overnight - presently at 246 cars.
 - Vancouver represents 31% of all idle cars.
 - In total 76% of all idle cars are dwelling at origin locations.
- CP
 - **CP idle car counts for 48+ hours declined 14% (-113) overnight - currently at 722 cars.**
 - The number of cars idle for 4+ days decreased 20% (-104) overnight and have now decreased for the third consecutive day - presently at 411 cars.

- The number of cars idle for 7+ days rose 30% (+78) overnight - currently at 338 cars.
- Vancouver accounts for 54% of all idle cars.
- In total 37% of all idle cars are dwelling at origin locations.

Port Performance

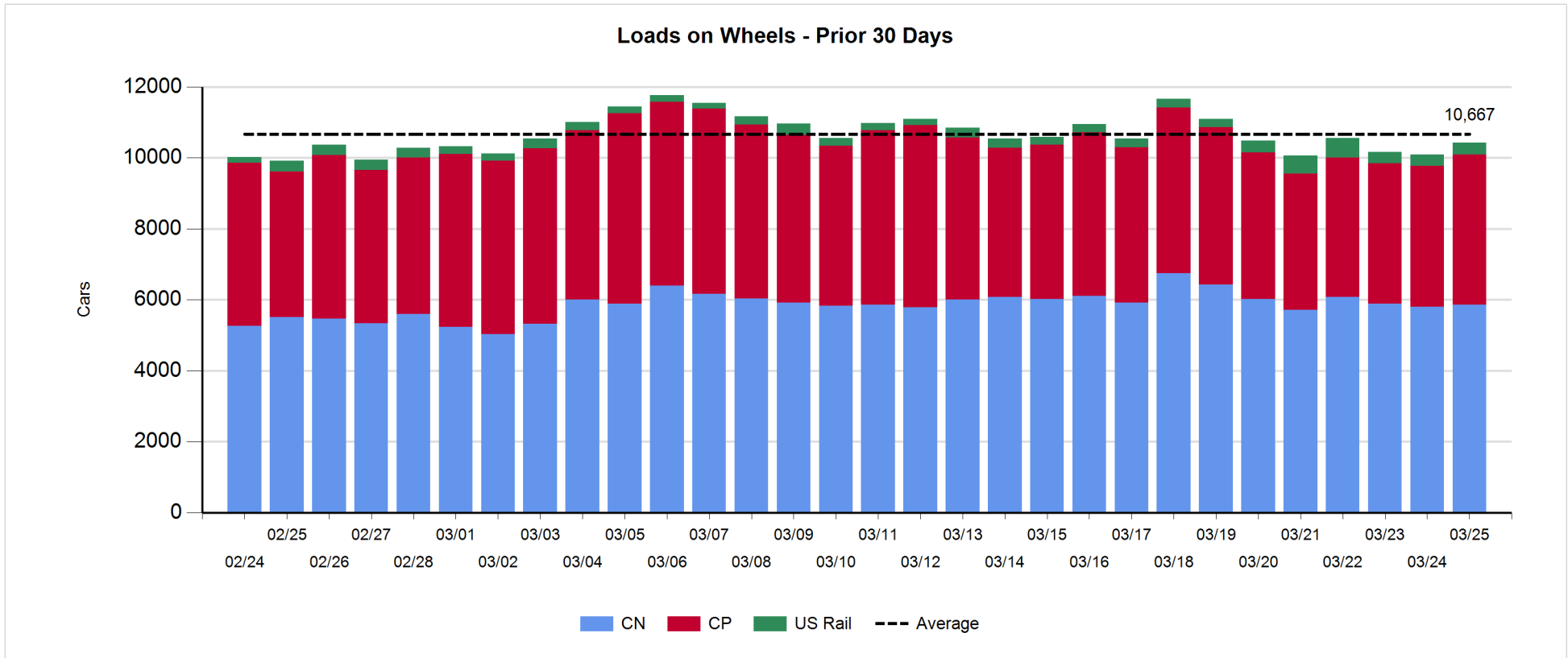
- CN and CP reported a total of 1,002 cars unloaded at the three major ports, now 22% above the trailing 30-day average. One day in Week 35 unloads now ahead of last week's pace by 250 unloads, reflecting higher unloads at Vancouver and Thunder Bay offset by lower unloads at Prince Rupert.
- Vancouver
 - 810 unloads reported by CN and CP at the Port of Vancouver; CN - 297 and CP - 513. One day in Week 35 unloads are tracking ahead of last week's performance by 350 unloads.
 - There are 1,000 cars on site at Vancouver with more than 600 cars arriving at the port in the last 24 hours.
 - CN and CP have 1,600 cars in British Columbia en route to Vancouver, with 800 cars at Kamloops and west, and 57% of traffic moving on CP.
- Prince Rupert
 - Prince Rupert reported 66 unloads, now behind last week's unloads after one day by 150 unloads.
 - Loads on wheels now above 1,000 cars - currently at 2,195 cars.
 - There are fewer than 600 cars west of Jasper en route to Prince Rupert.
 - There are more than 50 cars on site at Prince Rupert with 100 cars arriving at the port in the last 24 hours.
- Thunder Bay
 - 126 unloads, the highest seen in the last 30 days, were reported at Thunder Bay yesterday. One day in Week 35 unloads are tracking ahead of last week's pace by 50 unloads.
 - There are nearly 150 cars on site at Thunder Bay with 100 cars arriving at the port in the prior 24 hours.
 - There are zero cars en route to Thunder Bay from Winnipeg and east.

Daily Loads on Wheels - 3/25/2019

	E Canada	Prince Rupert	Thunder Bay	USA/MEX	Vancouver	Total
CN	1,058	2,195	33	254	2,316	5,856
CP	398		146	571	3,121	4,236
Short Line	5				52	57
US Rail				270		270
	1,461	2,195	179	1,095	5,489	10,419

Change in Loads on Wheels - Prior 24 Hours

	E Canada	Prince Rupert	Thunder Bay	USA/MEX	Vancouver	Total
CN	-172	490	-27	-6	-228	57
CP	-42		-83	21	376	272
Short Line	2				-2	0
US Rail				0		0
	-212	490	-110	15	146	329

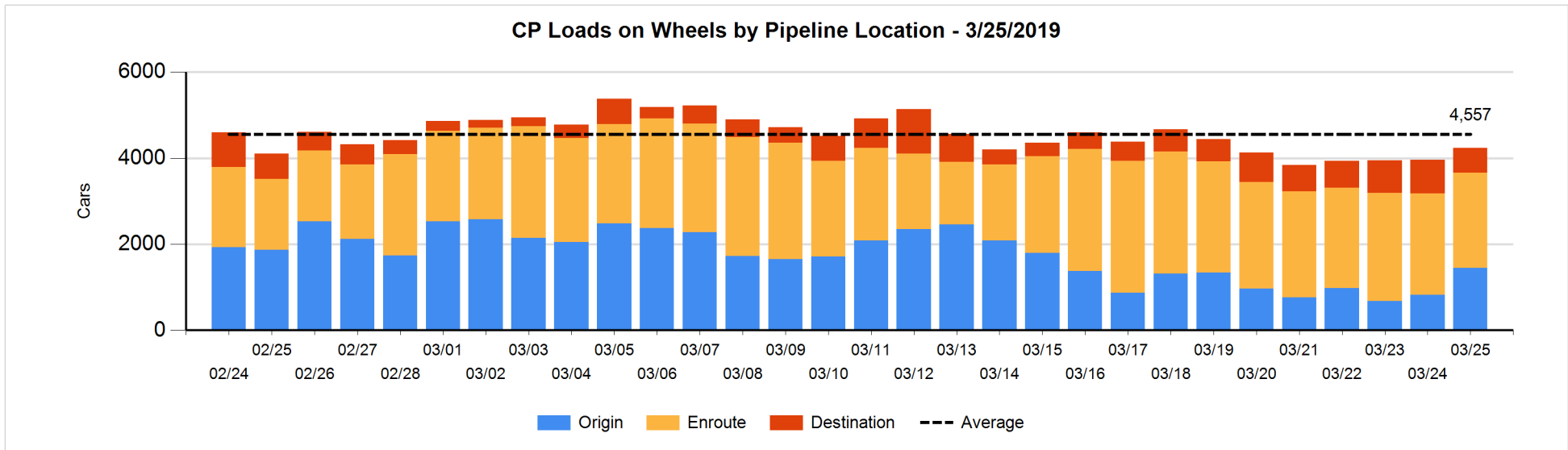
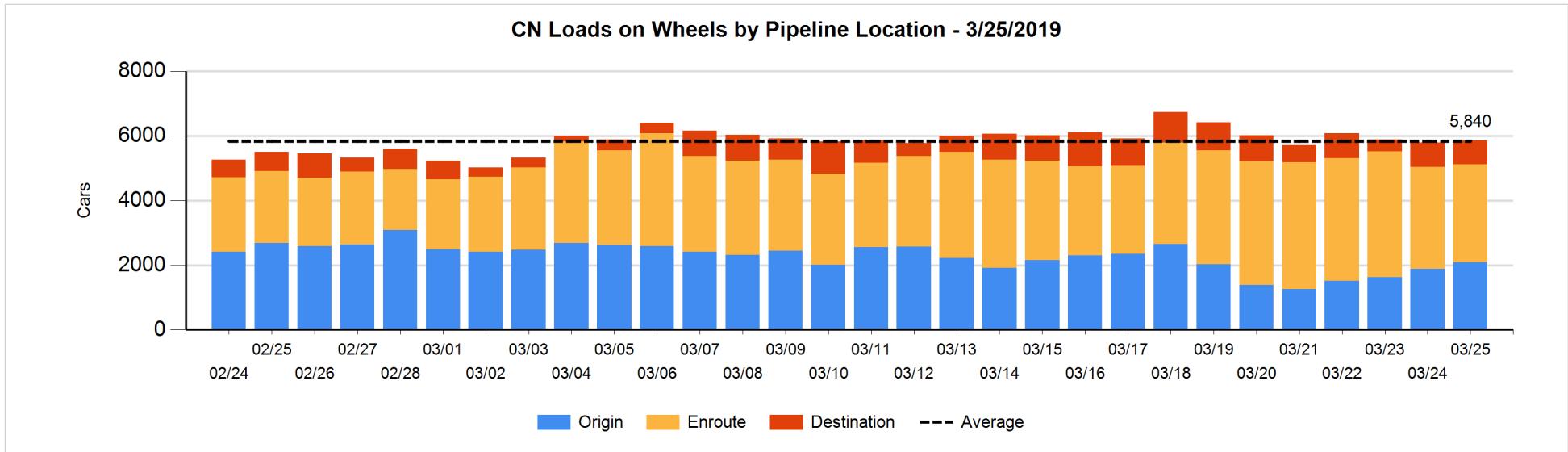


Daily Loads on Wheels By Pipeline Location - 3/25/2019

	E Canada	Prince Rupert	Thunder Bay	USA/MEX	Vancouver	Total
CN						
Origin	179	1,157		72	681	2,089
Enroute	756	973		159	1,138	3,026
Destination	123	65	33	23	497	741
	1,058	2,195	33	254	2,316	5,856
CP						
Origin	138		40	259	1,011	1,448
Enroute	249		2	310	1,653	2,214
Destination	11		104	2	457	574
	398		146	571	3,121	4,236
US Rail / Short Line						
Origin						
Enroute				194		194
Destination	5			76	52	133
	5			270	52	327

Change in Daily Loads on Wheels By Pipeline Location - Prior 24 Hours

	E Canada	Prince Rupert	Thunder Bay	USA/MEX	Vancouver	Total
CN						
Origin	-102	453		-6	-142	203
Enroute	-53	7		-11	-71	-128
Destination	-17	30	-27	11	-15	-18
	-172	490	-27	-6	-228	57
CP						
Origin	25		16	-73	655	623
Enroute	-16		-91	94	-123	-136
Destination	-51		-8	0	-156	-215
	-42		-83	21	376	272
US Rail / Short Line						
Origin						
Enroute				23		23
Destination	2			-23	-2	-23
	2			0	-2	0

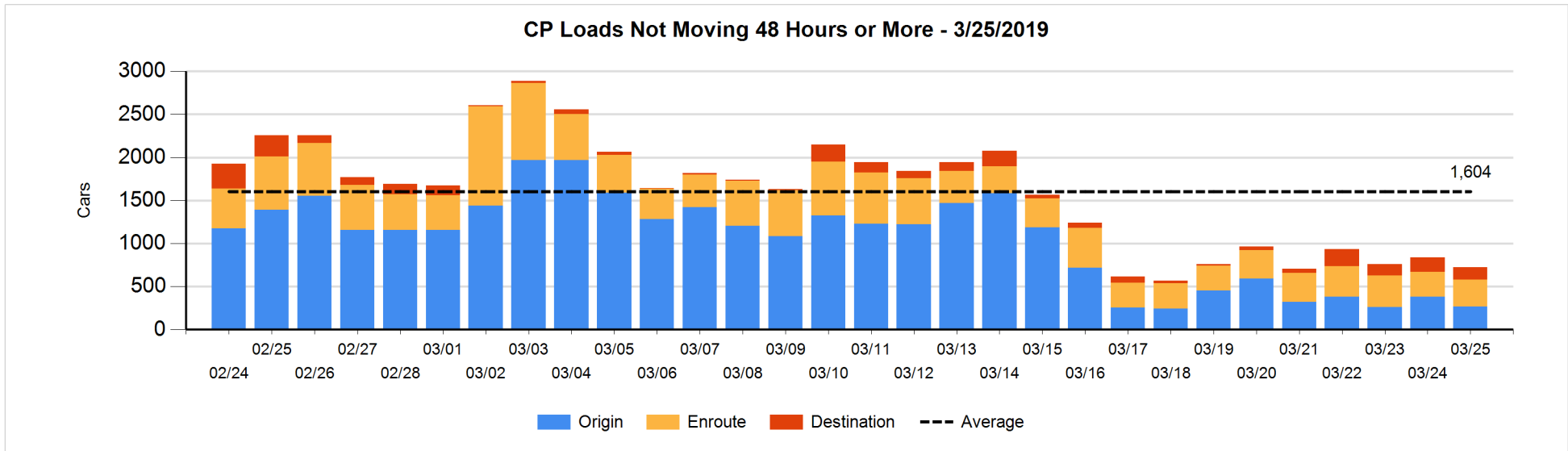
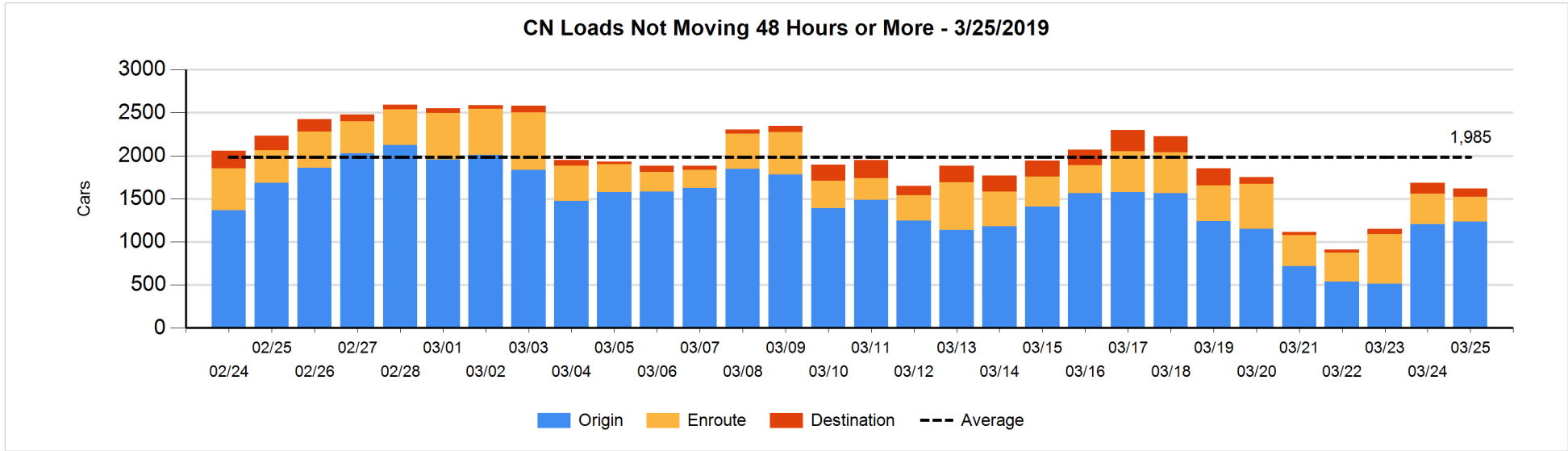


Loads Not Moving 48 Hours or More - 3/25/2019

	E Canada	Prince Rupert	Thunder Bay	USA/MEX	Vancouver	Total
CN						
Origin	79	652		45	459	1235
Enroute	248	10		2	28	288
Destination	33	8	33	10	14	98
	360	670	33	57	501	1621
CP						
Origin	113		24	106	24	267
Enroute	48		1	32	230	311
Destination	8		1		135	144
	169		26	138	389	722
US Rail / Short Line						
Origin						
Enroute				26		26
Destination	2			54	30	86
	2			80	30	112

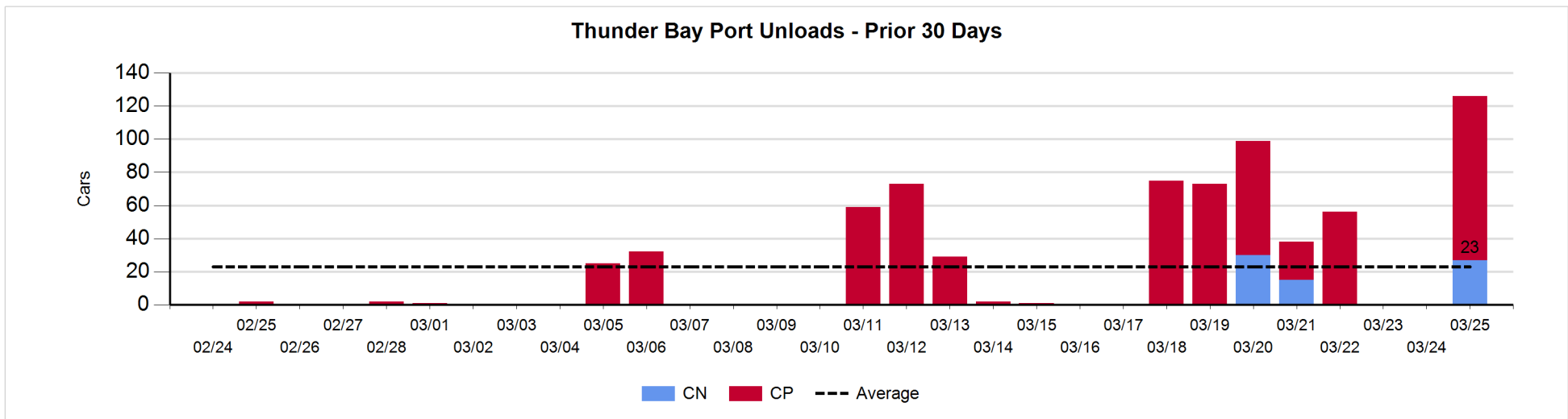
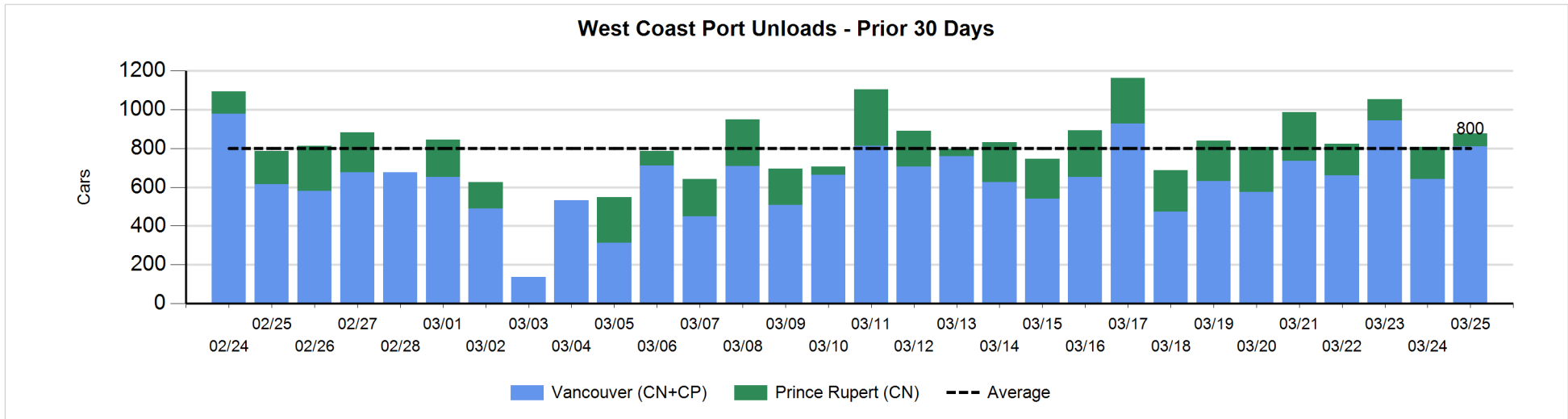
Change in Loads Not Moving 48 Hours or More - 3/25/2019

	E Canada	Prince Rupert	Thunder Bay	USA/MEX	Vancouver	Total
CN						
Origin	45	0		0	-15	30
Enroute	-39	-2		-25	1	-65
Destination	0	0	-27	-2	0	-29
	6	-2	-27	-27	-14	-64
CP						
Origin	0		0	0	-117	-117
Enroute	-26		-1	-46	98	25
Destination	-54		0		33	-21
	-80		-1	-46	14	-113
US Rail / Short Line						
Origin						
Enroute				-25		-25
Destination	-1			-18	-3	-22
	-1			-43	-3	-47



Port Unloads - 3/25/2019

	Prince Rupert	Vancouver	West Coast Total	Thunder Bay	Total
CN	66	297	363	27	390
CP		513	513	99	612
	66	810	876	126	1,002



Port Terminal Status

Vancouver

Daily Activity for 3/25/2019

	Cars Arrived	Cars Received in Interchange	Cars Delivered in Interchange	Cars Placed for Unloading	Loads on Wheels at Destination As of 3/25/2019
CN	273	23		206	497
CP	345		23	387	457
SRY	11			13	52

Port Unloads

	03/25	03/24	Week To Date	Last Week
CN	297	205	297	2,358
CP	513	436	513	2,302
SRY	16	2	16	78

Age Profile of Loaded Cars Waiting Placement for Unloading

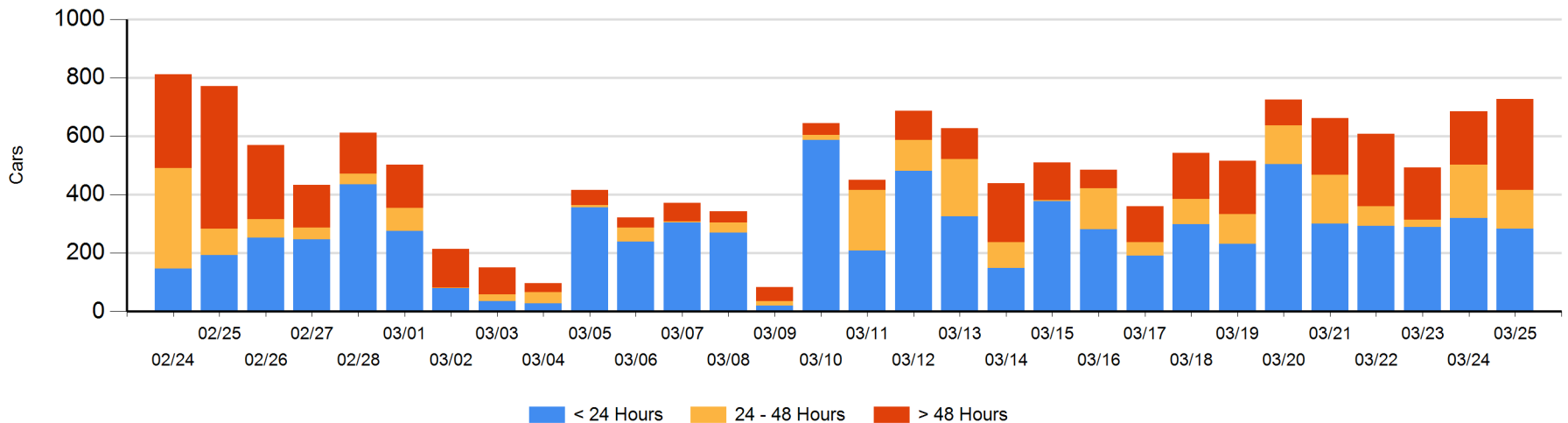
Today

	< 24 Hrs	24 - 48 Hrs	> 48-72 Hrs	> 72 Hrs	Total On Hand
CN	214	74	88	64	440
CP	70	58	54	105	287
SRY					0

Change in Last 24 Hours

	< 24 Hrs	24-48 Hrs	48 - 72 Hrs	> 72 Hrs
CN	17	-14	71	22
CP	-53	-36	47	-11
SRY				

Loaded Cars on Hand Vancouver Waiting for Placement - Last 30 Days All Railways



Port Terminal Status

Prince Rupert

Daily Activity for 3/25/2019

	Cars Arrived	Cars Received in Interchange	Cars Delivered in Interchange	Cars Placed for Unloading	Loads on Wheels at Destination As of 3/25/2019
CN	96			97	65

Port Unloads

	03/25	03/24	Week To Date	Last Week
CN	66	166	66	1,343

Age Profile of Loaded Cars Waiting Placement for Unloading

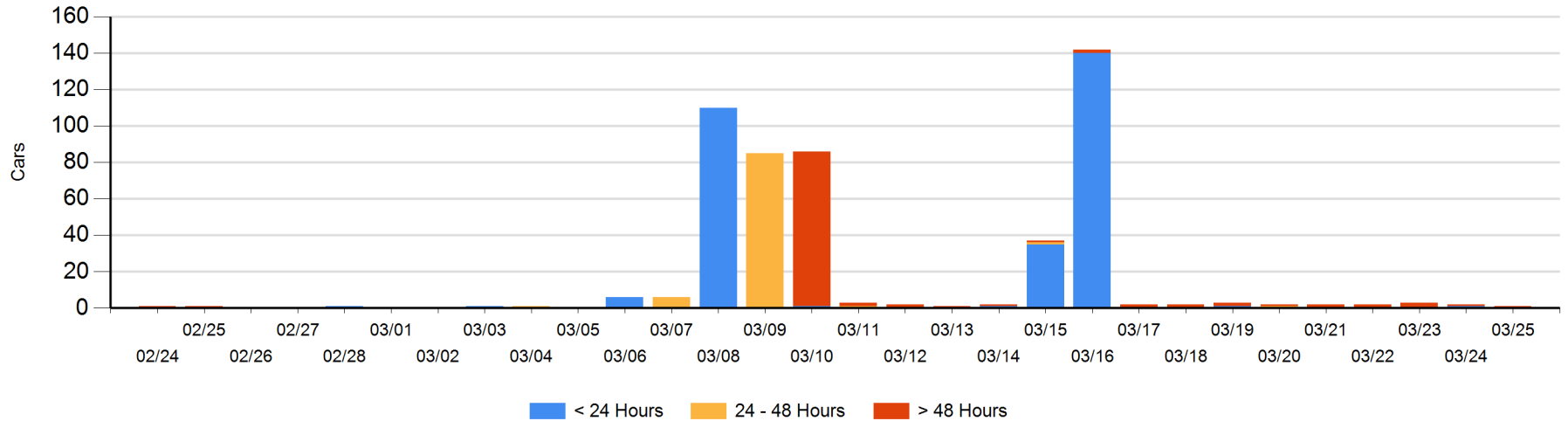
Today

	< 24 Hrs	24 - 48 Hrs	> 48-72 Hrs	> 72 Hrs	Total On Hand
CN			1		1

Change in Last 24 Hours

	< 24 Hrs	24-48 Hrs	48 - 72 Hrs	> 72 Hrs
CN	-1		1	-1

Loaded Cars on Hand Prince Rupert Waiting for Placement - Last 30 Days All Railways



Port Terminal Status

Thunder Bay

Daily Activity for 3/25/2019

	Cars Arrived	Cars Received in Interchange	Cars Delivered in Interchange	Cars Placed for Unloading	Loads on Wheels at Destination As of 3/25/2019
CN					33
CP	91			63	104

Port Unloads

	03/25	03/24	Week To Date	Last Week
CN	27		27	45
CP	99		99	296

Age Profile of Loaded Cars Waiting Placement for Unloading

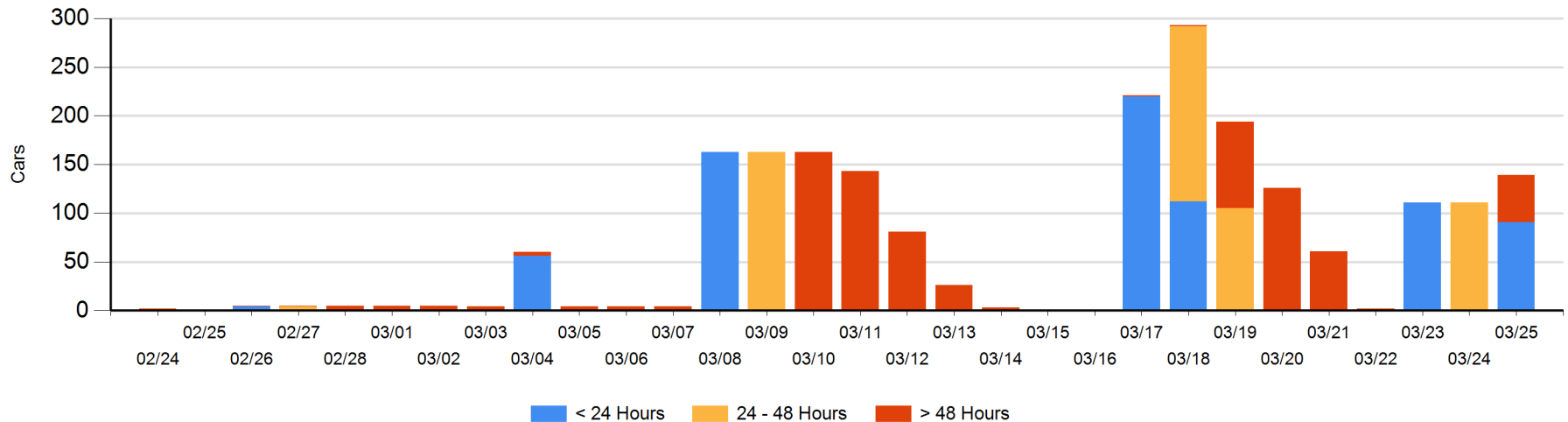
Today

	< 24 Hrs	24 - 48 Hrs	> 48-72 Hrs	> 72 Hrs	Total On Hand
CN					0
CP	91		48		139

Change in Last 24 Hours

	< 24 Hrs	24-48 Hrs	48 - 72 Hrs	> 72 Hrs
CN				
CP	91	-111	48	

Loaded Cars on Hand Thunder Bay Waiting for Placement - Last 30 Days All Railways



Measurement Definitions

Loads on Wheels	<p>Count of loaded rail cars including all rail cars that have been released loaded at origin and have not been reported by the railway as unloaded at destination.</p> <p>Counts include all rail cars (hopper cars and boxcars) moving within a pipeline.</p>
Loads Not Moving	<p>Loaded rail cars for which the railways have not reported a movement event for 48 hours or more whether the rail car is at origin, enroute or at destination.</p>
Port Unloads	<p>Count of rail cars reported by railways as unloaded at the western port destinations of Vancouver, Prince Rupert and Thunder Bay.</p> <p>Unload counts include all rail cars (hopper cars and boxcars) unloaded by all receivers including major port terminals, transloaders and other receivers.</p>
Cars Arrived	<p>Count of rail cars reported as arrived at the destination railway terminal.</p>
Cars Received in Interchange	<p>Count of rail cars received in interchange by each railway within a destination railway terminal. Interchange activity is tracked for the Vancouver and Thunder Bay pipelines as applicable.</p>
Cars Delivered in Interchange	<p>Count of rail cars delivered in interchange by each railway within a destination railway terminal. Interchange activity is tracked for the Vancouver and Thunder Bay pipelines as applicable.</p>
Cars Placed for Unloading	<p>Count of rail cars reported by the railways as placed loaded at the receiver's facility for unloading.</p>
Loads on Wheels at Destination	<p>Count of rail cars that remain under load within the destination railway terminal including rail cars that have been reported as placed for unloading but not yet reported as unloaded.</p>
Waiting Placement for Unloading	<p>Count of rail cars that have been reported as arrived at the destination railway terminal but not reported as placed for unloading by the railway.</p> <p>For the Ports of Vancouver, Prince Rupert and Thunder Bay the count of rail cars waiting placement for unloading is categorized by age – i.e. the elapsed time from arrival at destination to the current report date.</p>