

SPEED READ

- Loads on wheels decreased overnight, marking a decline in both CN and CP volumes. On a net basis, volumes fell due to reduced traffic across all corridors other than Thunder Bay.
- Network fluidity improved overnight, led by a decline in idle car counts on CN by 25% (-327) offset by a rise in idle car counts on CP by 16% (+159). The total count of cars for 4+ days on both railways increased slightly by 1% (+7) overnight - now at 601 cars.
- Four days in Week 40 unloads now ahead of prior week's performance by 950 unloads, marking improved week over week performance across all three major ports - Vancouver, Thunder Bay and Prince Rupert.

Loads on Wheels

- Loads on wheels declined for the fourth consecutive day, down 4% (-481) overnight, due to lower volumes on both CN and CP - combined total at 10,625 and 5% below the trailing 30-day average.
- On a net basis, the decline in loads on wheels indicates reduced traffic across all corridors other than Thunder Bay.
- CN volumes decreased for the fourth consecutive day, down 5% (-293) overnight, with lower volumes across all corridors other than Thunder Bay. System wide CN loads on wheels currently at 5,409 and 11% below the trailing 30-day average.
- CP volumes decreased 3% (-164) overnight, driven by a decline in traffic in the Thunder Bay and USA/MEX corridors offset by a rise in traffic in the Vancouver and E. Canada corridors. CP system wide loads on wheels currently at 5,088 and 4% above the trailing 30-day average.
- Vancouver currently at 6,388, declined 3% (-183) overnight and have now decreased for the fourth consecutive day, now 6% below the trailing 30-day average.
- The Prince Rupert pipeline now at 1,424, declined significantly by 11% (-174) overnight, and 9% below the trailing 30-day average.
- Thunder Bay volumes increased marginally by 1% (+16) overnight and have now increased for the third consecutive day - now at 2,030, the highest seen in the last 30 days, and 51% above the trailing 30-day average, with 64% of traffic moving on CP.

Hopper Car Rationing

- CN rationed 100 hopper cars in week 38.

Loads Not Moving

- **The count of cars not moving for 48+ hours declined 7% (-168) overnight, marking lower counts on CN offset by higher counts on CP. Idle car counts currently at 2,138 and 20% above the trailing 30-day average.**
- CN
 - **The count of idle cars for 48+ hours decreased 25% (-327) overnight - currently at 982 cars.**
 - The number of cars idle for 4+ days declined 33% (-127) overnight - currently at 257 cars.
 - The count of cars not moving for 7+ days decreased significantly by 80% (-231) overnight - currently at 57 cars.
 - Vancouver represents 78% of all idle cars.
 - In total 55% of all idle cars are dwelling at origin locations.
- CP
 - **CP idle car counts for 48+ hours increased for the third consecutive day, up 16% (+159) overnight - now at 1,156 cars.**
 - The number of cars idle for 4+ days increased significantly by 64% (+134) overnight - currently at 344 cars.

- The number of cars idle for 7+ days increased significantly by 100% (+38) overnight - currently at 76 cars.
- Vancouver accounts for 83% of all idle cars.
- In total 31% of all idle cars are dwelling at origin locations.

Port Performance

- CN and CP reported a total of 1,681 cars unloaded at the three major ports, the highest seen in the last 30 days, now 37% above the trailing 30-day average. Four days in Week 40 unloads now ahead of last week's pace by 950 unloads, marking higher unloads across all three major ports - Vancouver, Thunder Bay and Prince Rupert.
- Vancouver
 - 1,107 unloads reported by CN and CP at the Port of Vancouver; CN - 550 and CP - 557. Four days in Week 40 unloads are tracking ahead of last week's performance by more than 900 unloads.
 - There are 1,550 cars on site at Vancouver with around 1,250 cars arriving at the port in the last 24 hours.
 - CN and CP have 2,000 cars in British Columbia en route to Vancouver, with 1,350 cars at Kamloops and west, and 62% of traffic moving on CP.
- Prince Rupert
 - Prince Rupert reported 287 unloads, now ahead of last week's unloads after four days by 3 unloads.
 - Loads on wheels now above 1,000 cars - currently at 1,424 cars.
 - There are more than 500 cars west of Jasper en route to Prince Rupert.
 - There are 100 cars on site at Prince Rupert with 150 cars arriving at the port in the last 24 hours.
- Thunder Bay
 - 287 unloads were reported at Thunder Bay yesterday. Four days in Week 40 unloads are tracking ahead of last week's pace by nearly 50 unloads.
 - There are more than 850 cars on site at Thunder Bay with around 500 cars arriving at the port in the prior 24 hours.
 - There are around 450 cars en route to Thunder Bay from Winnipeg and east.

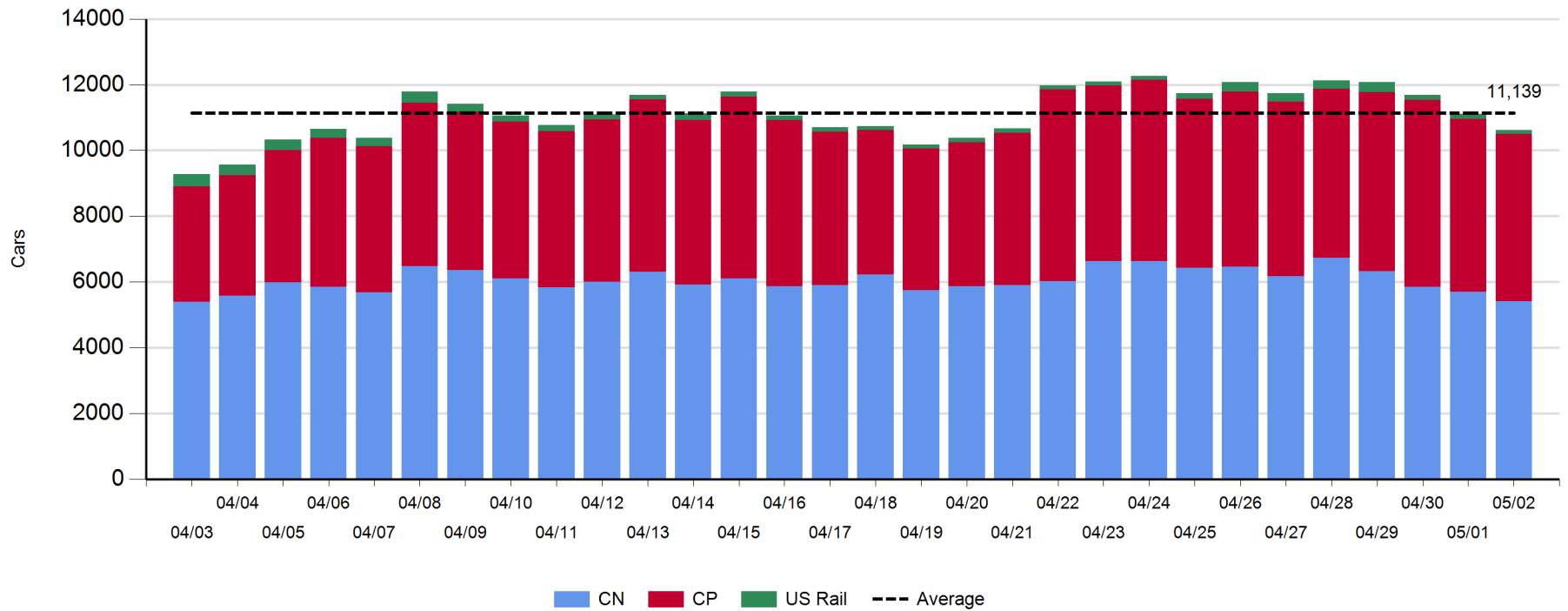
Daily Loads on Wheels - 5/2/2019

| | E Canada | Prince Rupert | Thunder Bay | USA/MEX | Vancouver | Total |
|------------|----------|---------------|-------------|---------|-----------|--------|
| CN | 318 | 1,424 | 722 | 165 | 2,780 | 5,409 |
| CP | 150 | | 1,308 | 55 | 3,575 | 5,088 |
| Short Line | 7 | | | | 33 | 40 |
| US Rail | | | | 88 | | 88 |
| | 475 | 1,424 | 2,030 | 308 | 6,388 | 10,625 |

Change in Loads on Wheels - Prior 24 Hours

| | E Canada | Prince Rupert | Thunder Bay | USA/MEX | Vancouver | Total |
|------------|----------|---------------|-------------|---------|-----------|-------|
| CN | -101 | -174 | 227 | -2 | -243 | -293 |
| CP | 10 | | -211 | -29 | 66 | -164 |
| Short Line | -13 | | | | -6 | -19 |
| US Rail | | | | -5 | | -5 |
| | -104 | -174 | 16 | -36 | -183 | -481 |

Loads on Wheels - Prior 30 Days

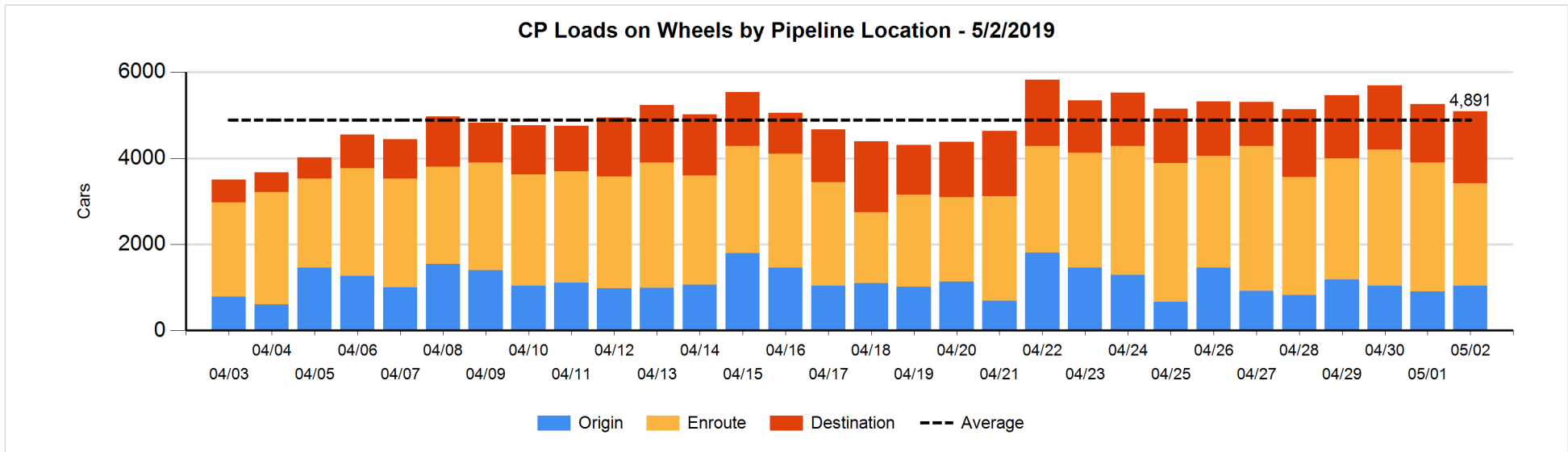
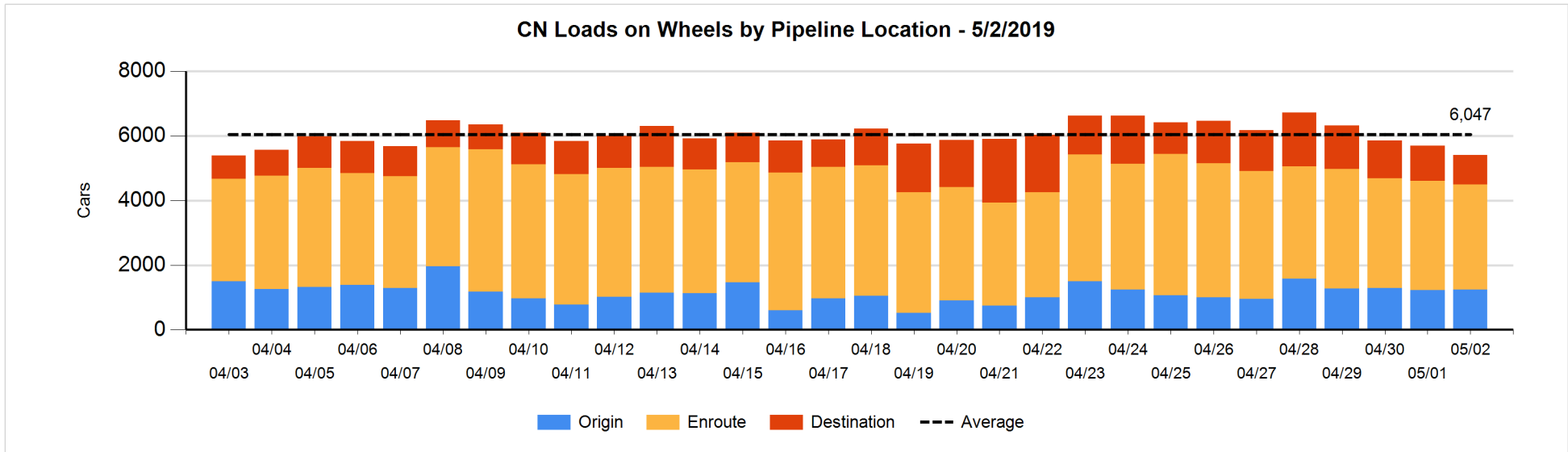


Daily Loads on Wheels By Pipeline Location - 5/2/2019

| | E Canada | Prince Rupert | Thunder Bay | USA/MEX | Vancouver | Total |
|----------------------|----------|---------------|-------------|---------|-----------|-------|
| CN | | | | | | |
| Origin | | 214 | 303 | 35 | 694 | 1,246 |
| Enroute | 287 | 1,108 | 306 | 114 | 1,433 | 3,248 |
| Destination | 31 | 102 | 113 | 16 | 653 | 915 |
| | 318 | 1,424 | 722 | 165 | 2,780 | 5,409 |
| CP | | | | | | |
| Origin | 38 | | 178 | 5 | 820 | 1,041 |
| Enroute | 111 | | 370 | 17 | 1,884 | 2,382 |
| Destination | 1 | | 760 | 33 | 871 | 1,665 |
| | 150 | | 1,308 | 55 | 3,575 | 5,088 |
| US Rail / Short Line | | | | | | |
| Origin | | | | | | |
| Enroute | | | | 47 | | 47 |
| Destination | 7 | | | 41 | 33 | 81 |
| | 7 | | | 88 | 33 | 128 |

Change in Daily Loads on Wheels By Pipeline Location - Prior 24 Hours

| | E Canada | Prince Rupert | Thunder Bay | USA/MEX | Vancouver | Total |
|----------------------|----------|---------------|-------------|---------|-----------|-------|
| CN | | | | | | |
| Origin | | -271 | 204 | 20 | 70 | 23 |
| Enroute | -50 | 222 | 98 | -7 | -399 | -136 |
| Destination | -51 | -125 | -75 | -15 | 86 | -180 |
| | -101 | -174 | 227 | -2 | -243 | -293 |
| CP | | | | | | |
| Origin | -26 | | -71 | 4 | 222 | 129 |
| Enroute | 40 | | -411 | -3 | -232 | -606 |
| Destination | -4 | | 271 | -30 | 76 | 313 |
| | 10 | | -211 | -29 | 66 | -164 |
| US Rail / Short Line | | | | | | |
| Origin | | | | | | |
| Enroute | | | | 0 | | 0 |
| Destination | -13 | | | -5 | -6 | -24 |
| | -13 | | | -5 | -6 | -24 |

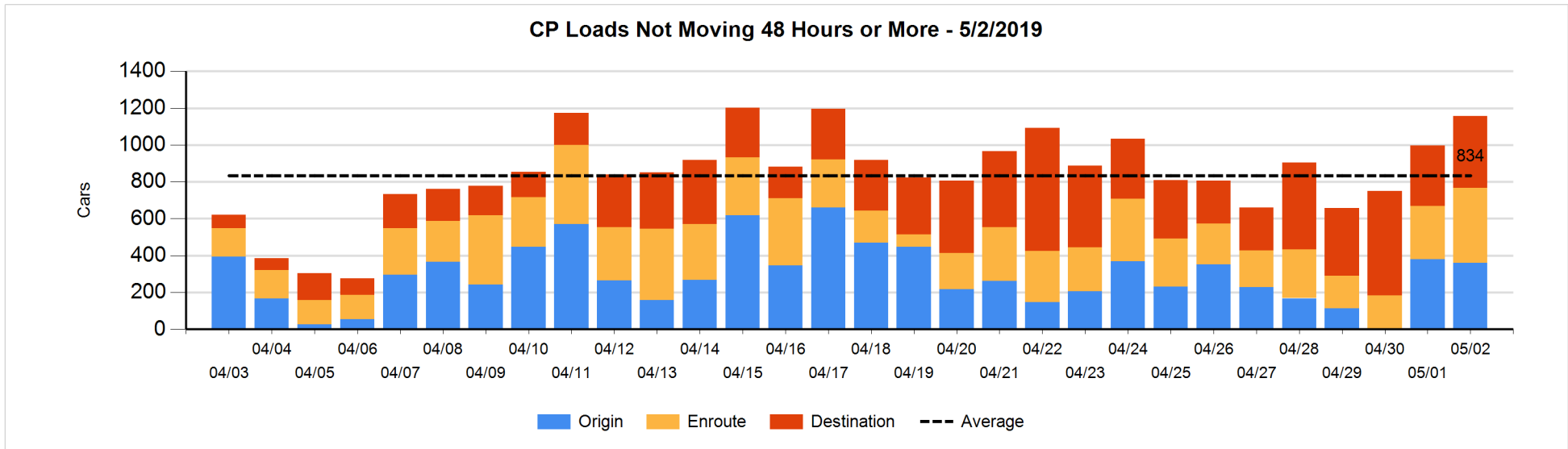
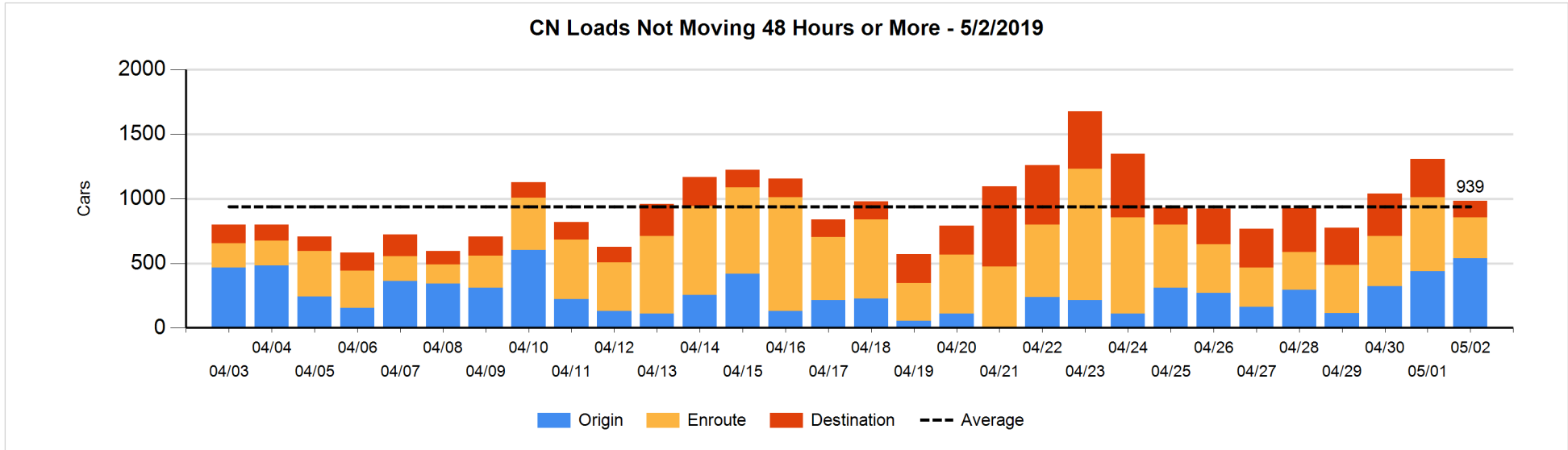


Loads Not Moving 48 Hours or More - 5/2/2019

| | E Canada | Prince Rupert | Thunder Bay | USA/MEX | Vancouver | Total |
|-----------------------------|----------|---------------|-------------|---------|-----------|-------|
| CN | | | | | | |
| Origin | | 101 | | 8 | 428 | 537 |
| Enroute | 19 | 10 | | 62 | 227 | 318 |
| Destination | 10 | 2 | 2 | 6 | 107 | 127 |
| | 29 | 113 | 2 | 76 | 762 | 982 |
| CP | | | | | | |
| Origin | 10 | | 15 | 1 | 335 | 361 |
| Enroute | | | 6 | 7 | 393 | 406 |
| Destination | 1 | | 132 | 21 | 235 | 389 |
| | 11 | | 153 | 29 | 963 | 1156 |
| US Rail / Short Line | | | | | | |
| Origin | | | | | | |
| Enroute | | | | 21 | | 21 |
| Destination | | | | 33 | 12 | 45 |
| | | | | 54 | 12 | 66 |

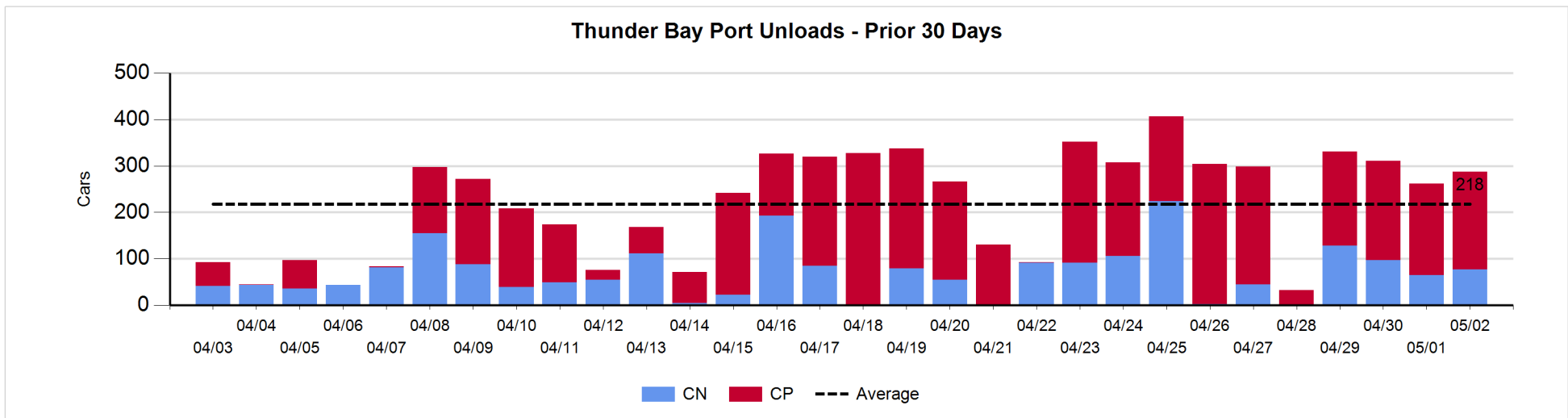
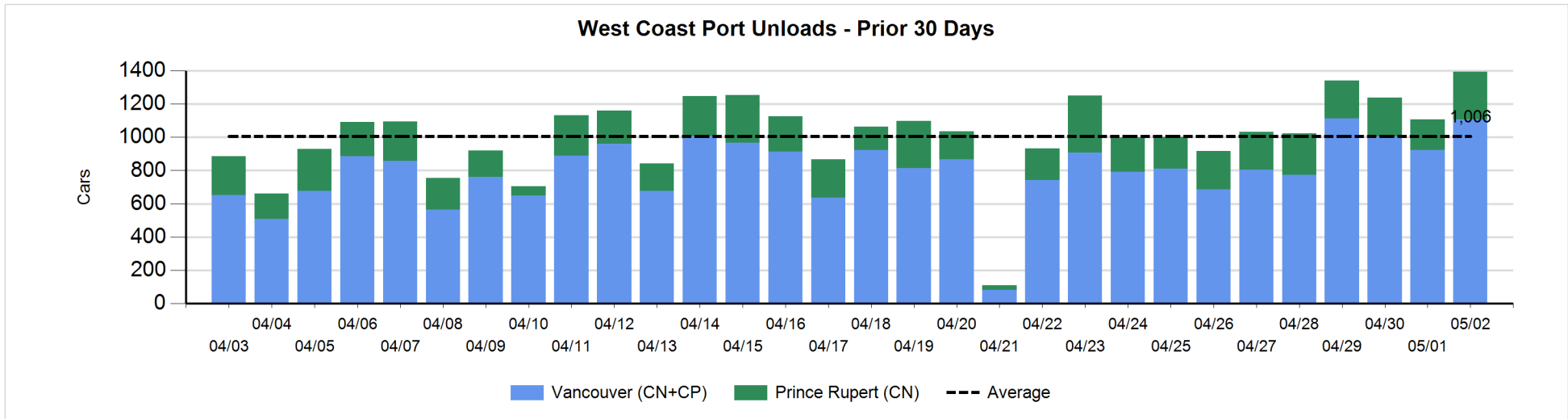
Change in Loads Not Moving 48 Hours or More - 5/2/2019

| | E Canada | Prince Rupert | Thunder Bay | USA/MEX | Vancouver | Total |
|-----------------------------|----------|---------------|-------------|---------|-----------|-------|
| CN | | | | | | |
| Origin | | -104 | | 5 | 196 | 97 |
| Enroute | -42 | -30 | | 1 | -183 | -254 |
| Destination | -56 | -101 | -1 | -8 | -4 | -170 |
| | -98 | -235 | -1 | -2 | 9 | -327 |
| CP | | | | | | |
| Origin | -26 | | 0 | 1 | 6 | -19 |
| Enroute | -1 | | 5 | -5 | 118 | 117 |
| Destination | 0 | | 30 | -10 | 41 | 61 |
| | -27 | | 35 | -14 | 165 | 159 |
| US Rail / Short Line | | | | | | |
| Origin | | | | | | |
| Enroute | | | | -2 | | -2 |
| Destination | | | | 12 | -1 | 11 |
| | | | | 10 | -1 | 9 |



Port Unloads - 5/2/2019

| | Prince Rupert | Vancouver | West Coast Total | Thunder Bay | Total |
|----|---------------|-----------|------------------|-------------|-------|
| CN | 287 | 550 | 837 | 77 | 914 |
| CP | | 557 | 557 | 210 | 767 |
| | 287 | 1,107 | 1,394 | 287 | 1,681 |



Port Terminal Status

Vancouver

Daily Activity for 5/2/2019

| | Cars Arrived | Cars Received in Interchange | Cars Delivered in Interchange | Cars Placed for Unloading | Loads on Wheels at Destination As of 5/2/2019 |
|-----|--------------|------------------------------|-------------------------------|---------------------------|---|
| CN | 641 | 134 | 212 | 452 | 653 |
| CP | 591 | 212 | 136 | 593 | 871 |
| SRY | | 2 | | 7 | 33 |

Port Unloads

| | 05/02 | 05/01 | Week To Date | Last Week |
|-----|-------|-------|--------------|-----------|
| CN | 550 | 365 | 2,000 | 2,384 |
| CP | 557 | 557 | 2,144 | 3,132 |
| SRY | 7 | 12 | 59 | 42 |

Age Profile of Loaded Cars Waiting Placement for Unloading

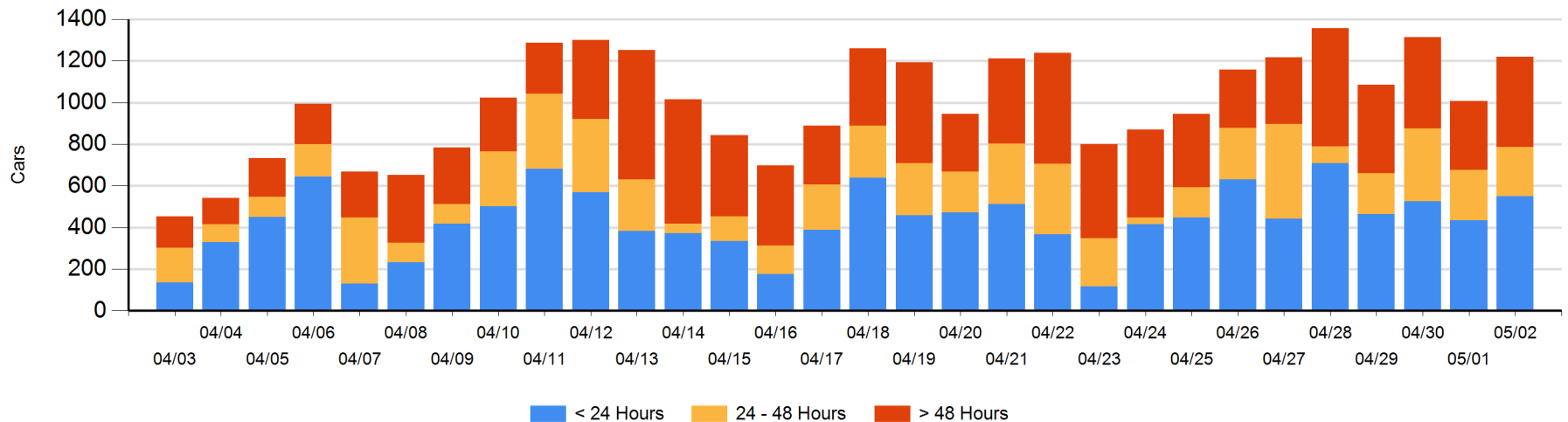
Today

| | < 24 Hrs | 24 - 48 Hrs | > 48-72 Hrs | > 72 Hrs | Total On Hand |
|-----|----------|-------------|-------------|----------|---------------|
| CN | 307 | 114 | 42 | 85 | 548 |
| CP | 242 | 125 | 194 | 110 | 671 |
| SRY | | | | | 0 |

Change in Last 24 Hours

| | < 24 Hrs | 24-48 Hrs | 48 - 72 Hrs | > 72 Hrs |
|-----|----------|-----------|-------------|----------|
| CN | 86 | 36 | 15 | 14 |
| CP | 29 | -40 | 163 | -90 |
| SRY | | | | |

Loaded Cars on Hand Vancouver Waiting for Placement - Last 30 Days All Railways



Port Terminal Status

Prince Rupert

Daily Activity for 5/2/2019

| | Cars Arrived | Cars Received in Interchange | Cars Delivered in Interchange | Cars Placed for Unloading | Loads on Wheels at Destination As of 5/2/2019 |
|----|--------------|------------------------------|-------------------------------|---------------------------|---|
| CN | 159 | | | 65 | 102 |

Port Unloads

| | 05/02 | 05/01 | Week To Date | Last Week |
|----|-------|-------|--------------|-----------|
| CN | 287 | 186 | 936 | 1,640 |

Age Profile of Loaded Cars Waiting Placement for Unloading

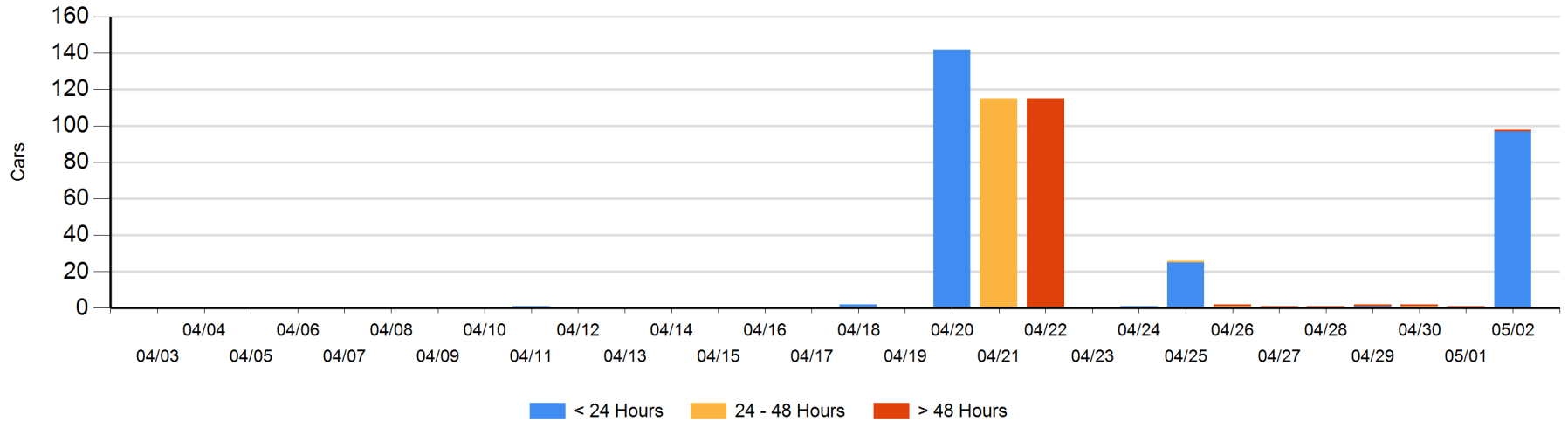
Today

| | < 24 Hrs | 24 - 48 Hrs | > 48-72 Hrs | > 72 Hrs | Total On Hand |
|----|----------|-------------|-------------|----------|---------------|
| CN | 97 | | | 1 | 98 |

Change in Last 24 Hours

| | < 24 Hrs | 24-48 Hrs | 48 - 72 Hrs | > 72 Hrs |
|----|----------|-----------|-------------|----------|
| CN | 97 | | | 0 |

Loaded Cars on Hand Prince Rupert Waiting for Placement - Last 30 Days All Railways



Port Terminal Status

Thunder Bay

Daily Activity for 5/2/2019

| | Cars Arrived | Cars Received in Interchange | Cars Delivered in Interchange | Cars Placed for Unloading | Loads on Wheels at Destination As of 5/2/2019 |
|----|--------------|------------------------------|-------------------------------|---------------------------|---|
| CN | 1 | | | 92 | 113 |
| CP | 482 | | | 109 | 760 |

Port Unloads

| | 05/02 | 05/01 | Week To Date | Last Week |
|----|-------|-------|--------------|-----------|
| CN | 77 | 65 | 367 | 559 |
| CP | 210 | 197 | 824 | 1,233 |

Age Profile of Loaded Cars Waiting Placement for Unloading

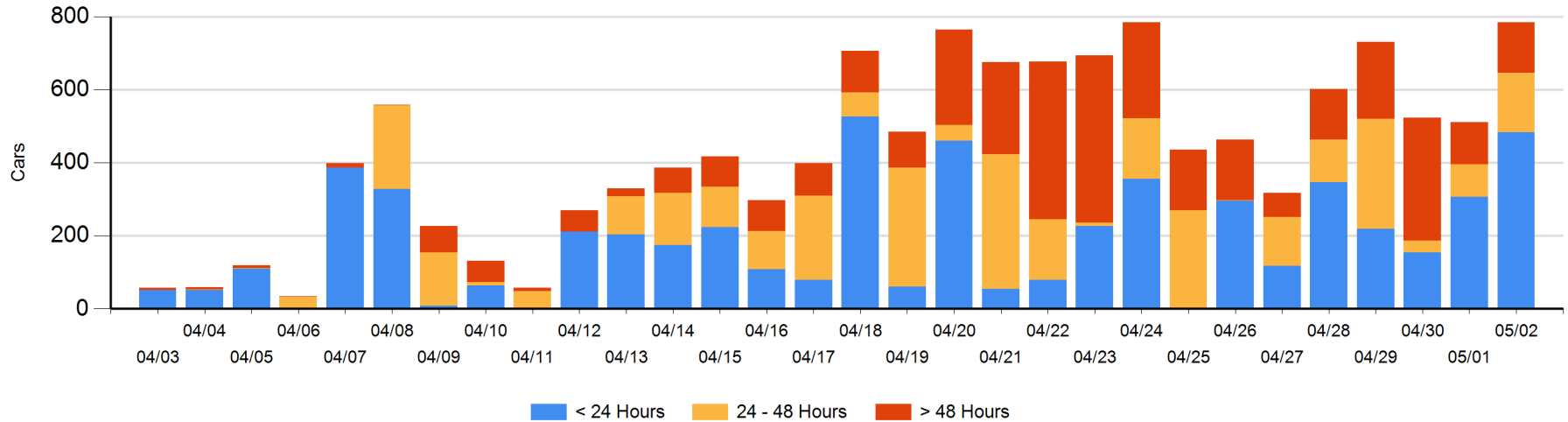
Today

| | < 24 Hrs | 24 - 48 Hrs | > 48-72 Hrs | > 72 Hrs | Total On Hand |
|----|----------|-------------|-------------|----------|---------------|
| CN | 1 | 61 | | 6 | 68 |
| CP | 482 | 102 | 49 | 83 | 716 |

Change in Last 24 Hours

| | < 24 Hrs | 24-48 Hrs | 48 - 72 Hrs | > 72 Hrs |
|----|----------|-----------|-------------|----------|
| CN | -152 | 61 | | 0 |
| CP | 328 | 14 | 40 | -18 |

Loaded Cars on Hand Thunder Bay Waiting for Placement - Last 30 Days All Railways



Measurement Definitions

| | |
|---------------------------------|---|
| Loads on Wheels | <p>Count of loaded rail cars including all rail cars that have been released loaded at origin and have not been reported by the railway as unloaded at destination.</p> <p>Counts include all rail cars (hopper cars and boxcars) moving within a pipeline.</p> |
| Loads Not Moving | <p>Loaded rail cars for which the railways have not reported a movement event for 48 hours or more whether the rail car is at origin, enroute or at destination.</p> |
| Port Unloads | <p>Count of rail cars reported by railways as unloaded at the western port destinations of Vancouver, Prince Rupert and Thunder Bay.</p> <p>Unload counts include all rail cars (hopper cars and boxcars) unloaded by all receivers including major port terminals, transloaders and other receivers.</p> |
| Cars Arrived | <p>Count of rail cars reported as arrived at the destination railway terminal.</p> |
| Cars Received in Interchange | <p>Count of rail cars received in interchange by each railway within a destination railway terminal. Interchange activity is tracked for the Vancouver and Thunder Bay pipelines as applicable.</p> |
| Cars Delivered in Interchange | <p>Count of rail cars delivered in interchange by each railway within a destination railway terminal. Interchange activity is tracked for the Vancouver and Thunder Bay pipelines as applicable.</p> |
| Cars Placed for Unloading | <p>Count of rail cars reported by the railways as placed loaded at the receiver's facility for unloading.</p> |
| Loads on Wheels at Destination | <p>Count of rail cars that remain under load within the destination railway terminal including rail cars that have been reported as placed for unloading but not yet reported as unloaded.</p> |
| Waiting Placement for Unloading | <p>Count of rail cars that have been reported as arrived at the destination railway terminal but not reported as placed for unloading by the railway.</p> <p>For the Ports of Vancouver, Prince Rupert and Thunder Bay the count of rail cars waiting placement for unloading is categorized by age – i.e. the elapsed time from arrival at destination to the current report date.</p> |