

SPEED READ

- Loads on wheels increased overnight, marking higher CP volumes offset by a decline in CN volumes. On a net basis, volumes gained due to higher traffic in the Vancouver and USA/MEX corridors offset by reduced traffic in the Thunder Bay, E. Canada and Prince Rupert corridors.
- Network fluidity deteriorated overnight, led by an increase in idle car counts on both CN and CP by 38% (+239) and 45% (+344), respectively. The total count of cars for 4+ days on both railways increased 14% (+65) overnight - now at 528 cars.
- One day in Week 41 unloads now behind prior week's performance by around 200 unloads, marking reduced unloads at Vancouver and Prince Rupert offset by improved week over week performance at Thunder Bay.

Loads on Wheels

- Loads on wheels increased 3% (+300) overnight, due to higher traffic on CP offset by reduced traffic on CN - combined total at 10,379 and 7% below the trailing 30-day average.
- On a net basis, the rise in loads on wheels indicates higher traffic in the Vancouver and USA/MEX corridors offset by reduced traffic in the Thunder Bay, E. Canada and Prince Rupert corridors.
- CN volumes fell 2% (-114) overnight, with lower traffic in the Thunder Bay, E. Canada and Prince Rupert corridors offset by higher traffic in the Vancouver and USA/MEX corridors. System wide CN loads on wheels now at 5,397, the lowest seen in the last 30 days, and 10% below the trailing 30-day average.
- CP volumes increased 9% (+418) overnight, driven by an increase in traffic across all corridors other than Thunder Bay. CP system wide loads on wheels currently at 4,839 and 3% below the trailing 30-day average.
- Vancouver presently at 6,452, increased 9% (+540) overnight, now 5% below the trailing 30-day average.
- The Prince Rupert pipeline presently at 1,567, decreased for the third consecutive day, down 1% (-13) overnight, and 4% below the trailing 30-day average.
- Thunder Bay volumes declined significantly by 14% (-245) overnight - now at 1,497 and 3% above the trailing 30-day average, with 81% of traffic moving on CP.

Hopper Car Rationing

- CN rationed 104 hopper cars in week 39.

Loads Not Moving

- **The count of cars not moving for 48+ hours increased 42% (+583) overnight, marking higher counts on both CN and CP. Idle car counts now at 1,970 and 7% above the trailing 30-day average.**
- CN
 - **The count of idle cars for 48+ hours increased 38% (+239) overnight - currently at 860 cars.**
 - The number of cars idle for 4+ days increased 25% (+30) overnight - currently at 149 cars.
 - The count of cars not moving for 7+ days increased significantly by 46% (+21) overnight - now at 67 cars.
 - Vancouver represents 57% of all idle cars.
 - In total 32% of all idle cars are dwelling at origin locations.
- CP
 - **CP idle car counts for 48+ hours rose 45% (+344) overnight - currently at 1,110 cars.**
 - The number of cars idle for 4+ days increased 10% (+35) overnight - now at 379 cars.

- The number of cars idle for 7+ days gained 7% (+11) overnight - now at 168 cars.
- Vancouver accounts for 61% of all idle cars.
- In total 0% of all idle cars are dwelling at origin locations.

Port Performance

- CN and CP reported a total of 1,480 cars unloaded at the three major ports, now 15% above the trailing 30-day average. One day in Week 41 unloads now behind last week's pace by fewer than 200 unloads, marking reduced unloads at Vancouver and Prince Rupert offset by higher unloads at Thunder Bay.
- Vancouver
 - 845 unloads reported by CN and CP at the Port of Vancouver; CN - 461 and CP - 384. One day in Week 41 unloads are tracking behind last week's performance by more than 250 unloads.
 - There are less than 1,500 cars on site at Vancouver with 500 cars arriving at the port in the last 24 hours.
 - CN and CP have more than 1,650 cars in British Columbia en route to Vancouver, with 1,050 cars at Kamloops and west, and 69% of traffic moving on CP.
- Prince Rupert
 - Prince Rupert reported 222 unloads, now behind last week's unloads after one day by 7 unloads.
 - Loads on wheels now above 1,000 cars - presently at 1,567 cars.
 - There are 600 cars west of Jasper en route to Prince Rupert.
 - There are 200 cars on site at Prince Rupert with more than 250 cars arriving at the port in the last 24 hours.
- Thunder Bay
 - 413 unloads were reported at Thunder Bay yesterday. One day in Week 41 unloads are tracking ahead of last week's pace by less than 100 unloads.
 - There are around 750 cars on site at Thunder Bay with about 150 cars arriving at the port in the prior 24 hours.
 - There are 250 cars en route to Thunder Bay from Winnipeg and east.

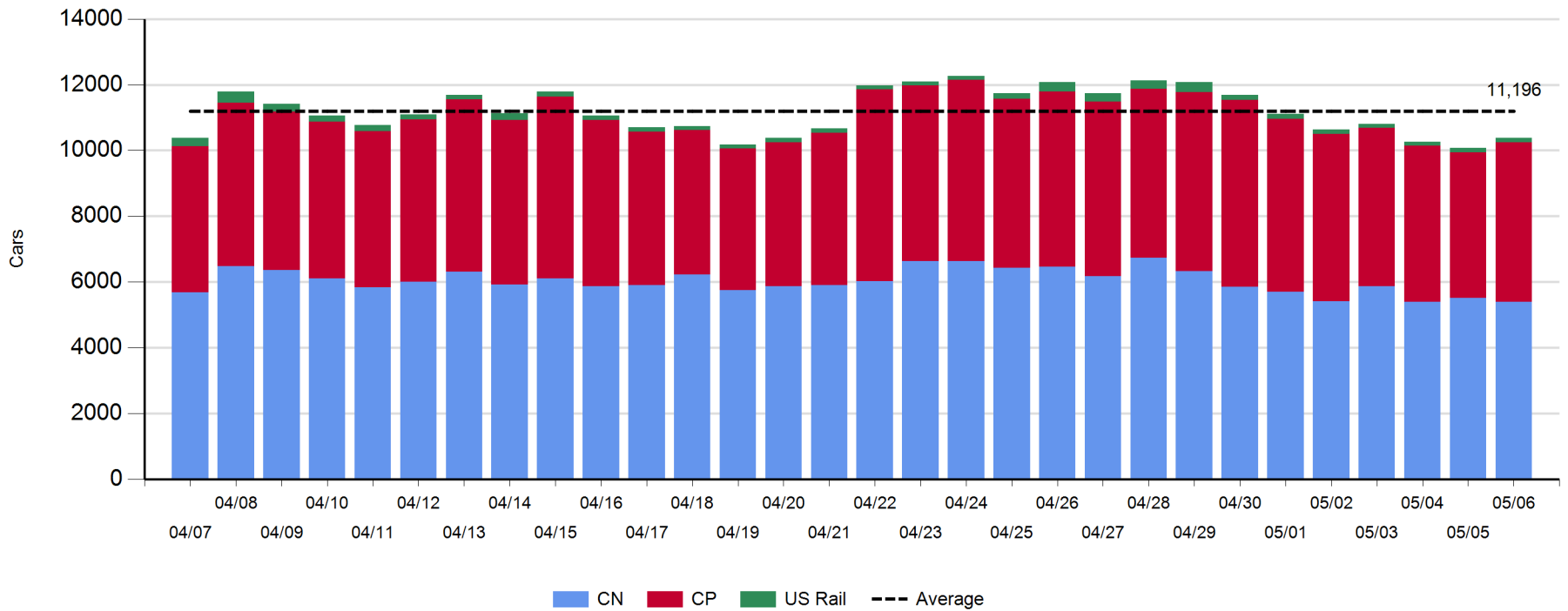
Daily Loads on Wheels - 5/6/2019

	E Canada	Prince Rupert	Thunder Bay	USA/MEX	Vancouver	Total
CN	430	1,567	288	141	2,971	5,397
CP	119		1,209	82	3,429	4,839
Short Line	12				52	64
US Rail				79		79
	561	1,567	1,497	302	6,452	10,379

Change in Loads on Wheels - Prior 24 Hours

	E Canada	Prince Rupert	Thunder Bay	USA/MEX	Vancouver	Total
CN	-53	-13	-207	14	145	-114
CP	15		-38	42	399	418
Short Line	4				-4	0
US Rail				-4		-4
	-34	-13	-245	52	540	300

Loads on Wheels - Prior 30 Days

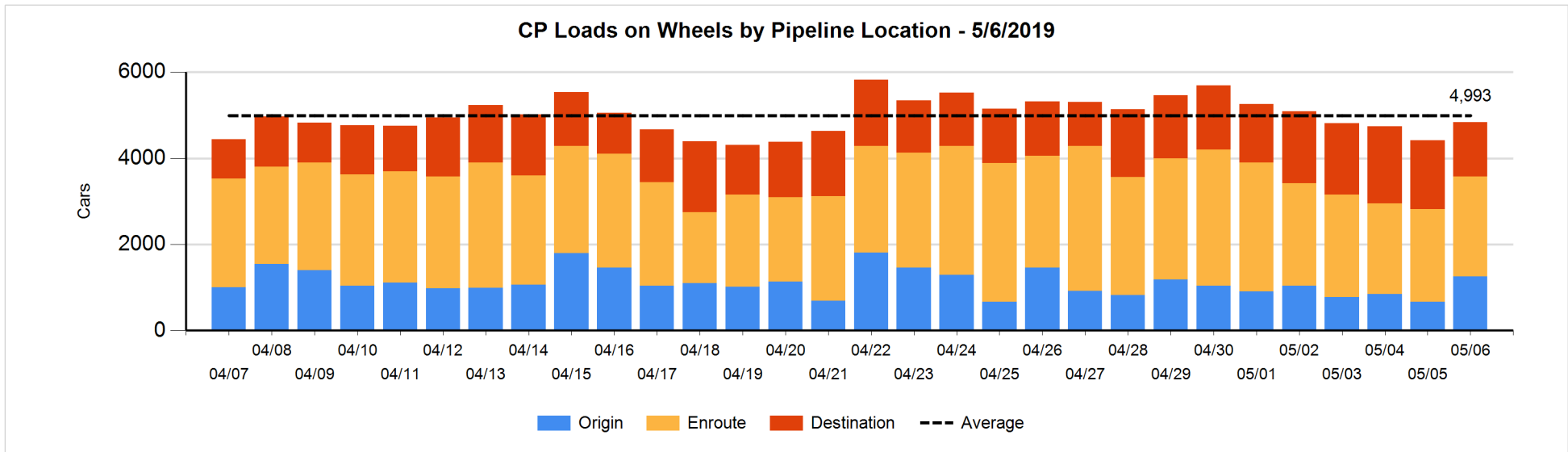
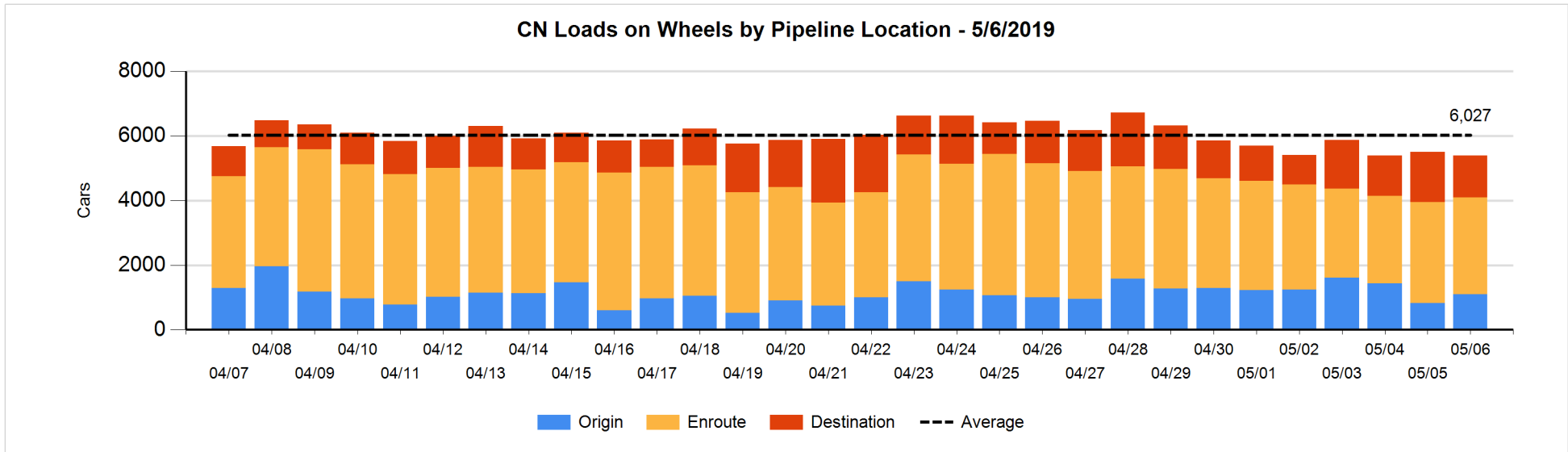


Daily Loads on Wheels By Pipeline Location - 5/6/2019

	E Canada	Prince Rupert	Thunder Bay	USA/MEX	Vancouver	Total
CN						
Origin		411		29	652	1,092
Enroute	295	963	148	85	1,517	3,008
Destination	135	193	140	27	802	1,297
	430	1,567	288	141	2,971	5,397
CP						
Origin	15		163	52	1,021	1,251
Enroute	89		450	8	1,778	2,325
Destination	15		596	22	630	1,263
	119		1,209	82	3,429	4,839
US Rail / Short Line						
Origin						
Enroute				63		63
Destination	12			16	52	80
	12			79	52	143

Change in Daily Loads on Wheels By Pipeline Location - Prior 24 Hours

	E Canada	Prince Rupert	Thunder Bay	USA/MEX	Vancouver	Total
CN						
Origin	-2	93	-25	28	180	274
Enroute	-22	-156	24	-11	43	-122
Destination	-29	50	-206	-3	-78	-266
	-53	-13	-207	14	145	-114
CP						
Origin	15		-166	50	686	585
Enroute	-1		197	-4	-18	174
Destination	1		-69	-4	-269	-341
	15		-38	42	399	418
US Rail / Short Line						
Origin						
Enroute	-5			-3		-8
Destination	9			-1	-4	4
	4			-4	-4	-4

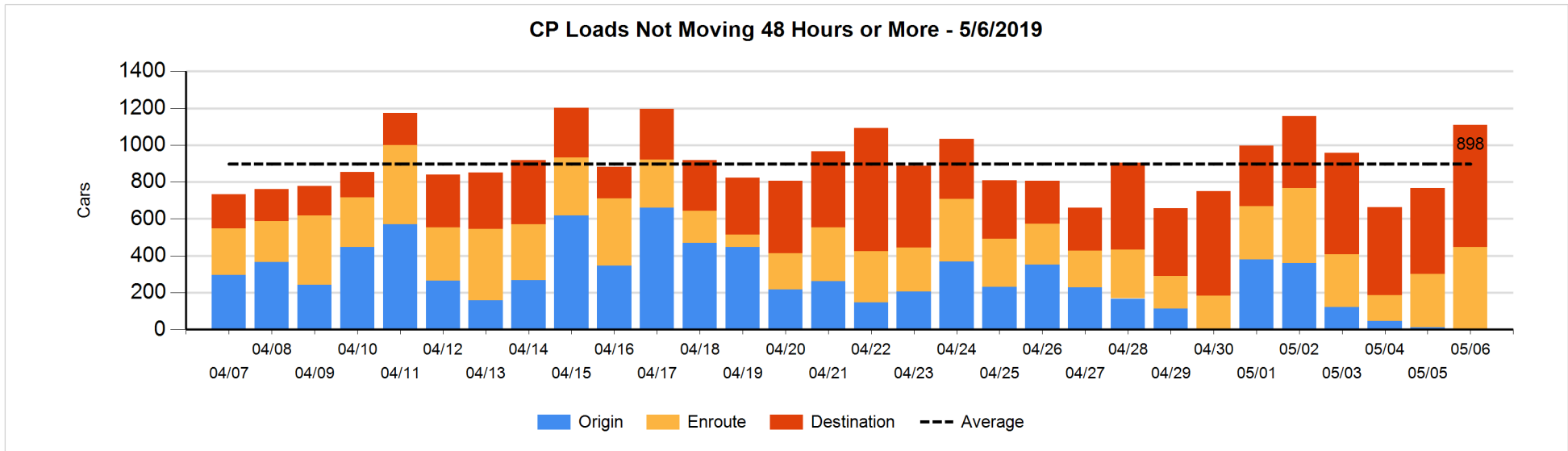
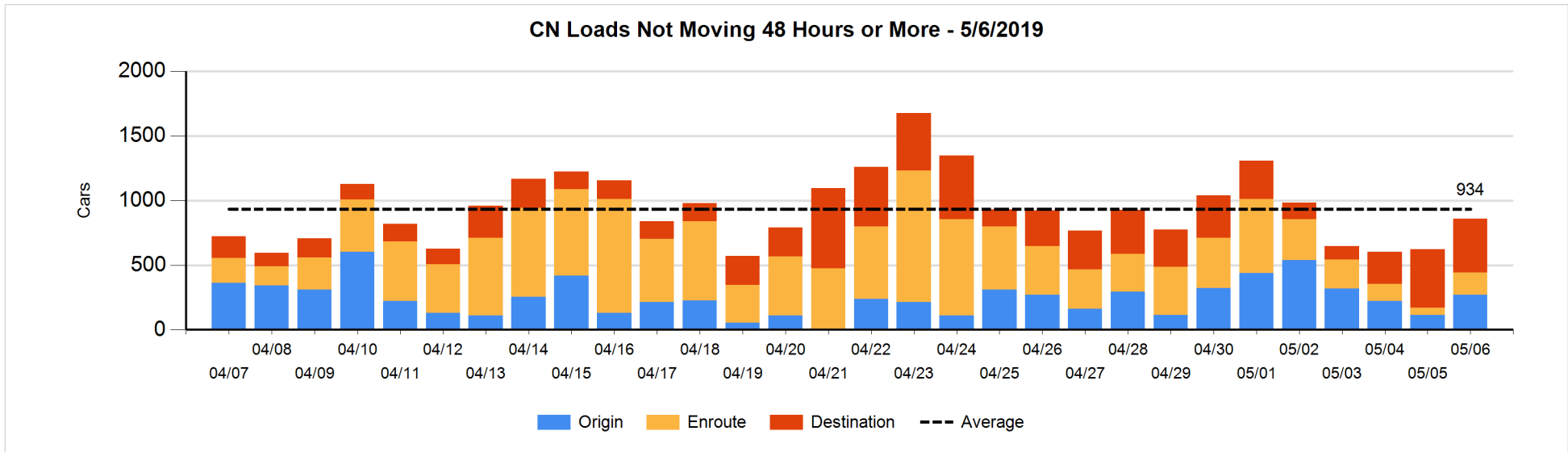


Loads Not Moving 48 Hours or More - 5/6/2019

	E Canada	Prince Rupert	Thunder Bay	USA/MEX	Vancouver	Total
CN						
Origin		102		1	169	272
Enroute	4	22		35	109	170
Destination	130	1	65	11	211	418
	134	125	65	47	489	860
CP						
Origin					4	4
Enroute	3		1	4	435	443
Destination			409	17	237	663
	3		410	21	676	1110
US Rail / Short Line						
Origin						
Enroute				20		20
Destination	1			6	20	27
	1			26	20	47

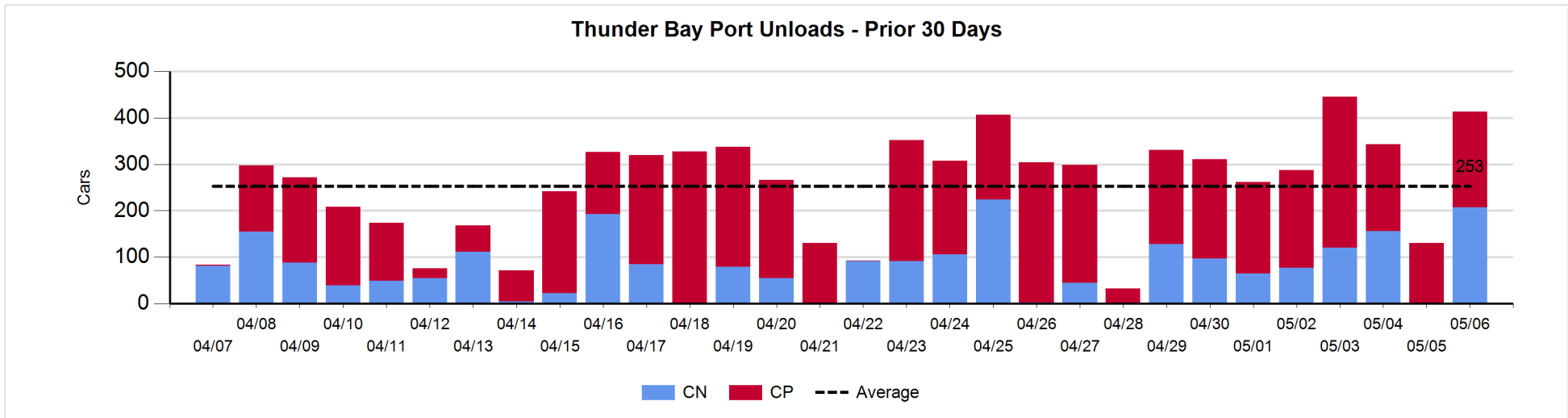
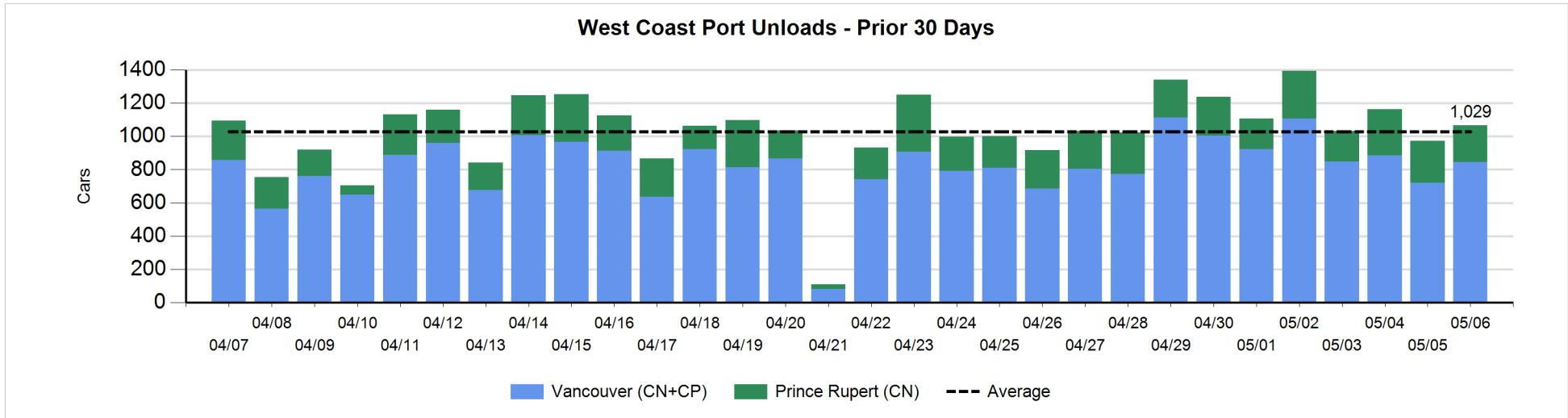
Change in Loads Not Moving 48 Hours or More - 5/6/2019

	E Canada	Prince Rupert	Thunder Bay	USA/MEX	Vancouver	Total
CN						
Origin		98		0	60	158
Enroute	-3	11		-2	107	113
Destination	-1	-3	40	-18	-50	-32
	-4	106	40	-20	117	239
CP						
Origin				-2	-7	-9
Enroute	3		-2	1	152	154
Destination			226	-9	-18	199
	3		224	-10	127	344
US Rail / Short Line						
Origin						
Enroute				-2		-2
Destination	-2			-10	-6	-18
	-2			-12	-6	-20



Port Unloads - 5/6/2019

	Prince Rupert	Vancouver	West Coast Total	Thunder Bay	Total
CN	222	461	683	207	890
CP		384	384	206	590
	222	845	1,067	413	1,480



Port Terminal Status

Vancouver

Daily Activity for 5/6/2019

	Cars Arrived	Cars Received in Interchange	Cars Delivered in Interchange	Cars Placed for Unloading	Loads on Wheels at Destination As of 5/6/2019
CN	276	109	110	454	802
CP	231	110	109	421	630
SRY	1			13	52

Port Unloads

	05/06	05/05	Week To Date	Last Week
CN	461	251	461	3,072
CP	384	468	384	3,523
SRY	16		16	73

Age Profile of Loaded Cars Waiting Placement for Unloading

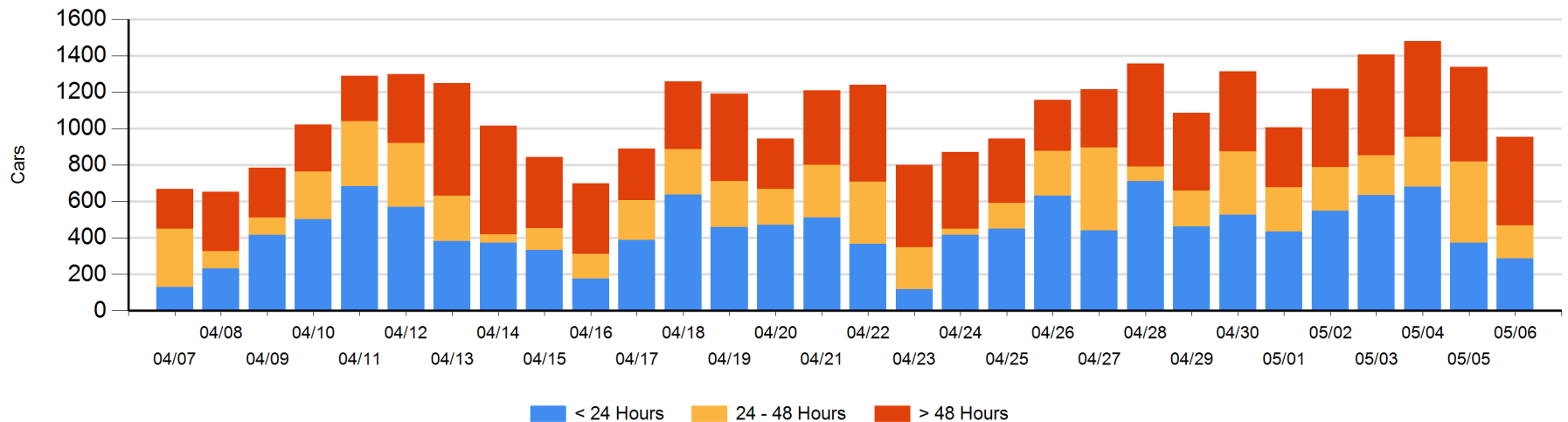
Today

	< 24 Hrs	24 - 48 Hrs	> 48-72 Hrs	> 72 Hrs	Total On Hand
CN	168	57	156	89	470
CP	119	126	20	220	485
SRY					0

Change in Last 24 Hours

	< 24 Hrs	24-48 Hrs	48 - 72 Hrs	> 72 Hrs
CN	-23	-255	114	-94
CP	-62	-8	-35	-22
SRY				

Loaded Cars on Hand Vancouver Waiting for Placement - Last 30 Days All Railways



Port Terminal Status

Prince Rupert

Daily Activity for 5/6/2019

	Cars Arrived	Cars Received in Interchange	Cars Delivered in Interchange	Cars Placed for Unloading	Loads on Wheels at Destination As of 5/6/2019
CN	275			275	193

Port Unloads

	05/06	05/05	Week To Date	Last Week
CN	222	253	222	1,652

Age Profile of Loaded Cars Waiting Placement for Unloading

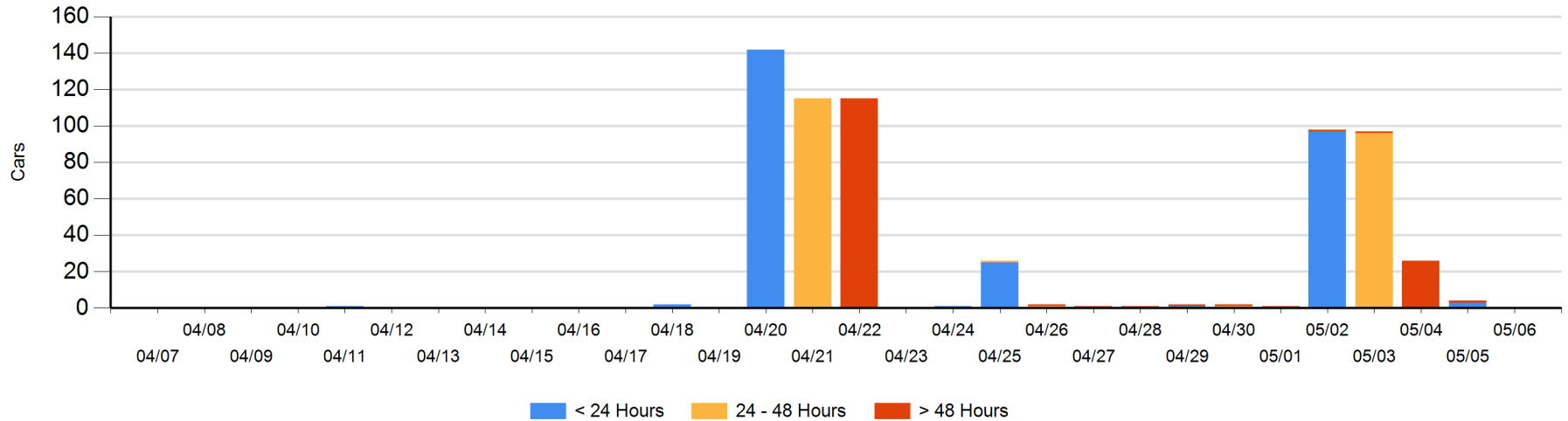
Today

	< 24 Hrs	24 - 48 Hrs	> 48-72 Hrs	> 72 Hrs	Total On Hand
CN					0

Change in Last 24 Hours

	< 24 Hrs	24-48 Hrs	48 - 72 Hrs	> 72 Hrs
CN	-3			-1

Loaded Cars on Hand Prince Rupert Waiting for Placement - Last 30 Days All Railways



Port Terminal Status

Thunder Bay

Daily Activity for 5/6/2019

	Cars Arrived	Cars Received in Interchange	Cars Delivered in Interchange	Cars Placed for Unloading	Loads on Wheels at Destination As of 5/6/2019
CN	1			87	140
CP	137			123	596

Port Unloads

	05/06	05/05	Week To Date	Last Week
CN	207	1	207	644
CP	206	129	206	1,466

Age Profile of Loaded Cars Waiting Placement for Unloading

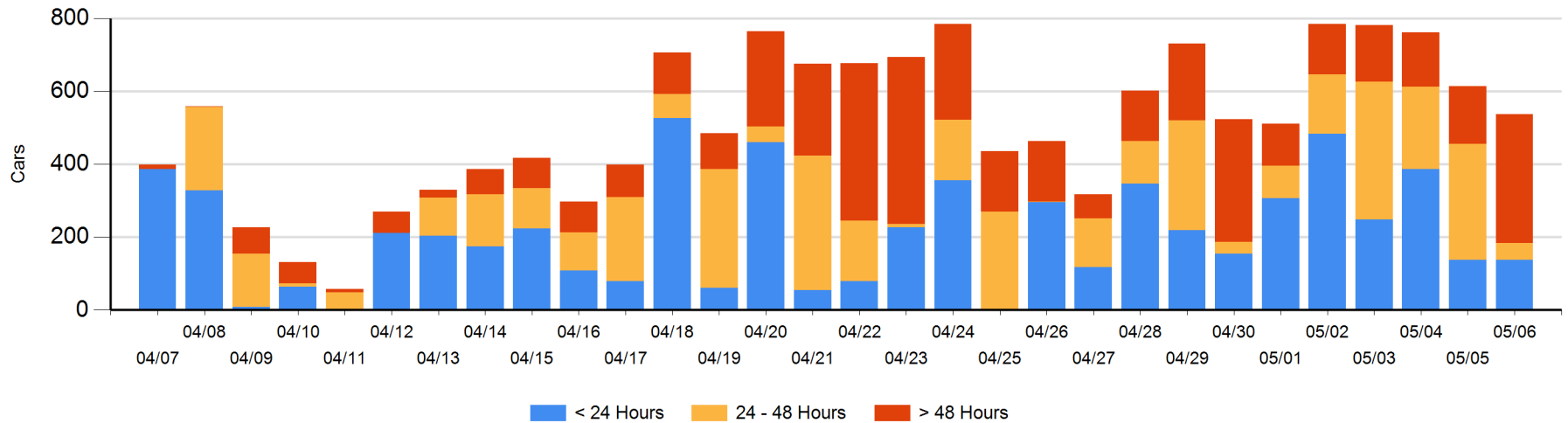
Today

	< 24 Hrs	24 - 48 Hrs	> 48-72 Hrs	> 72 Hrs	Total On Hand
CN	1	3			4
CP	137	43	220	133	533

Change in Last 24 Hours

	< 24 Hrs	24-48 Hrs	48 - 72 Hrs	> 72 Hrs
CN	-2	-64	-6	-14
CP	3	-209	143	72

Loaded Cars on Hand Thunder Bay Waiting for Placement - Last 30 Days All Railways



Measurement Definitions

Loads on Wheels	<p>Count of loaded rail cars including all rail cars that have been released loaded at origin and have not been reported by the railway as unloaded at destination.</p> <p>Counts include all rail cars (hopper cars and boxcars) moving within a pipeline.</p>
Loads Not Moving	<p>Loaded rail cars for which the railways have not reported a movement event for 48 hours or more whether the rail car is at origin, enroute or at destination.</p>
Port Unloads	<p>Count of rail cars reported by railways as unloaded at the western port destinations of Vancouver, Prince Rupert and Thunder Bay.</p> <p>Unload counts include all rail cars (hopper cars and boxcars) unloaded by all receivers including major port terminals, transloaders and other receivers.</p>
Cars Arrived	<p>Count of rail cars reported as arrived at the destination railway terminal.</p>
Cars Received in Interchange	<p>Count of rail cars received in interchange by each railway within a destination railway terminal. Interchange activity is tracked for the Vancouver and Thunder Bay pipelines as applicable.</p>
Cars Delivered in Interchange	<p>Count of rail cars delivered in interchange by each railway within a destination railway terminal. Interchange activity is tracked for the Vancouver and Thunder Bay pipelines as applicable.</p>
Cars Placed for Unloading	<p>Count of rail cars reported by the railways as placed loaded at the receiver's facility for unloading.</p>
Loads on Wheels at Destination	<p>Count of rail cars that remain under load within the destination railway terminal including rail cars that have been reported as placed for unloading but not yet reported as unloaded.</p>
Waiting Placement for Unloading	<p>Count of rail cars that have been reported as arrived at the destination railway terminal but not reported as placed for unloading by the railway.</p> <p>For the Ports of Vancouver, Prince Rupert and Thunder Bay the count of rail cars waiting placement for unloading is categorized by age – i.e. the elapsed time from arrival at destination to the current report date.</p>