

SPEED READ

- Loads on wheels fell overnight, marking a decline in both CN and CP volumes. On a net basis, volumes declined due to reduced volumes across all corridors other than Thunder Bay.
- Network fluidity improved overnight, led by a decline in idle car counts on CN by 15% (-98) offset by a rise in idle car counts on CP by 9% (+96). The total count of cars for 4+ days on both railways gained 22% (+131) overnight - now at 720 cars.
- Four days in Week 41 unloads now behind prior week's performance by more than 950 unloads, marking reduced unloads at Vancouver and Prince Rupert offset by improved week over week performance at Thunder Bay.

Loads on Wheels

- Loads on wheels decreased for the third consecutive day, down 3% (-285) overnight, due to reduced traffic on both CN and CP - combined total at 9,447, the lowest seen in the last 30 days, and 15% below the trailing 30-day average.
- On a net basis, the decline in loads on wheels indicates reduced volumes across all corridors other than Thunder Bay.
- CN volumes decreased for the fourth consecutive day, down 2% (-98) overnight, with reduced volumes across all corridors other than Thunder Bay. System wide CN loads on wheels now at 4,412, the lowest seen in the last 30 days, and 25% below the trailing 30-day average.
- CP volumes decreased 4% (-182) overnight, driven by a decline in traffic across all corridors other than E. Canada. CP system wide loads on wheels now at 4,930 and 2% below the trailing 30-day average.
- Vancouver now at 5,721, the lowest seen in the last 30 days, fell 5% (-294) overnight and have now decreased for the third consecutive day, now 14% below the trailing 30-day average.
- The Prince Rupert pipeline currently at 1,472, fell 7% (-108) overnight, and 10% below the trailing 30-day average.
- Thunder Bay volumes rose significantly by 13% (+161) overnight - currently at 1,446 and 4% below the trailing 30-day average, with 76% of traffic moving on CP.

Hopper Car Rationing

- CN rationed 104 hopper cars in week 39. No rationing reported to date for week 40.

Loads Not Moving

- **The count of cars not moving for 48+ hours remained unchanged (-2) overnight, reflecting reduced counts on CN offset by higher counts on CP. Idle car counts now at 1,689 and 9% below the trailing 30-day average.**
- CN
 - **The count of idle cars for 48+ hours decreased for the third consecutive day, down 15% (-98) overnight - now at 539 cars, the lowest seen in the last 30 days.**
 - The number of cars idle for 4+ days declined 22% (-55) overnight - currently at 197 cars.
 - The count of cars not moving for 7+ days rose 20% (+10) overnight - now at 59 cars.
 - Vancouver represents 41% of all idle cars.
 - In total 39% of all idle cars are dwelling at origin locations.
- CP
 - **CP idle car counts for 48+ hours gained 9% (+96) overnight - now at 1,150 cars.**
 - The number of cars idle for 4+ days increased significantly by 55% (+186) overnight - now at 523 cars.

- The number of cars idle for 7+ days increased 7% (+10) overnight - currently at 148 cars.
- Vancouver accounts for 79% of all idle cars.
- In total 16% of all idle cars are dwelling at origin locations.

Port Performance

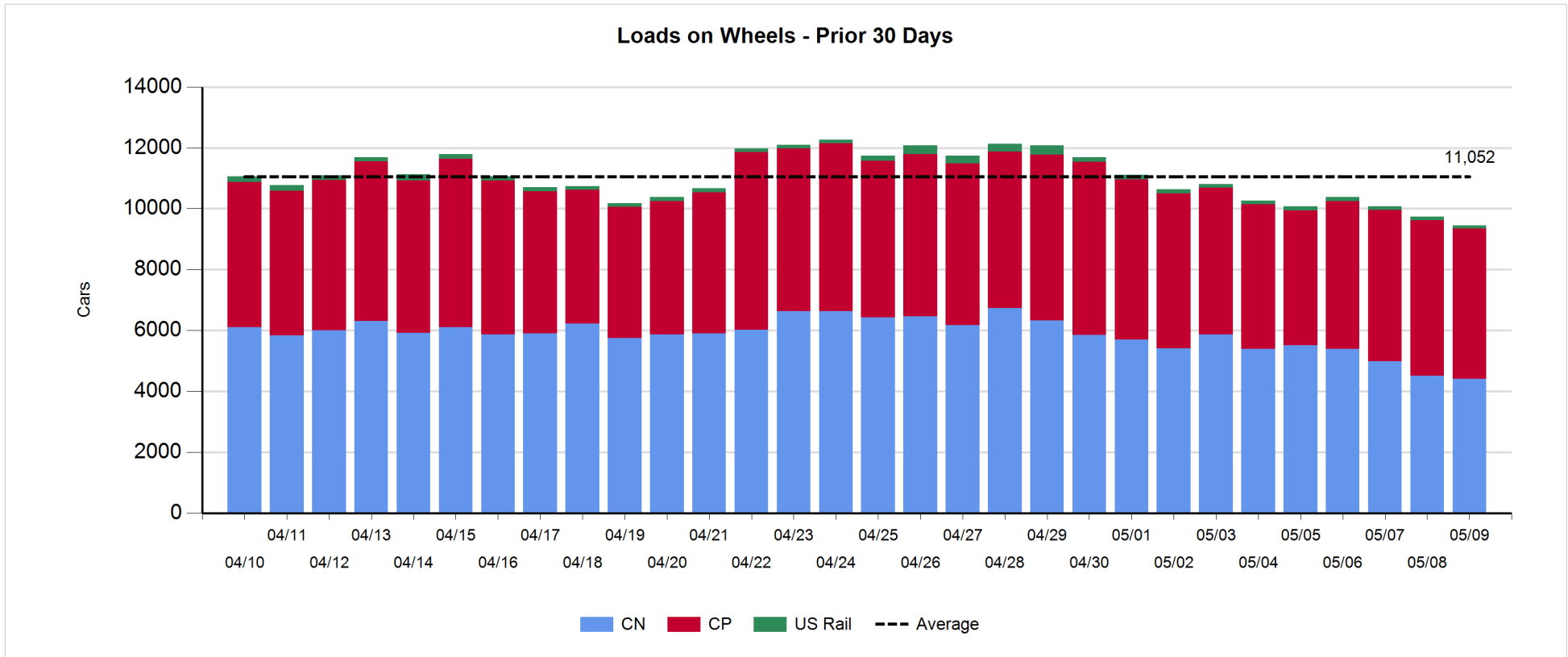
- CN and CP reported a total of 1,213 cars unloaded at the three major ports, now 6% below the trailing 30-day average. Four days in Week 41 unloads now behind last week's pace by more than 950 unloads, marking reduced unloads at Vancouver and Prince Rupert offset by higher unloads at Thunder Bay.
- Vancouver
 - 724 unloads reported by CN and CP at the Port of Vancouver; CN - 351 and CP - 373. Four days in Week 41 unloads are tracking behind last week's performance by 1,000 unloads.
 - There are more than 1,600 cars on site at Vancouver with more than 850 cars arriving at the port in the last 24 hours.
 - CN and CP have more than 1,900 cars in British Columbia en route to Vancouver, with 800 cars at Kamloops and west, and 68% of traffic moving on CP.
- Prince Rupert
 - Prince Rupert reported 156 unloads, now behind last week's unloads after four days by 150 unloads.
 - Loads on wheels now above 1,000 cars - now at 1,472 cars.
 - There are more than 350 cars west of Jasper en route to Prince Rupert.
 - There are 300 cars on site at Prince Rupert with 200 cars arriving at the port in the last 24 hours.
- Thunder Bay
 - 333 unloads were reported at Thunder Bay yesterday. Four days in Week 41 unloads are tracking ahead of last week's pace by fewer than 200 unloads.
 - There are 400 cars on site at Thunder Bay with 1 car arriving at the port in the prior 24 hours.
 - There are more than 150 cars en route to Thunder Bay from Winnipeg and east.

Daily Loads on Wheels - 5/9/2019

	E Canada	Prince Rupert	Thunder Bay	USA/MEX	Vancouver	Total
CN	312	1,472	344	191	2,093	4,412
CP	160		1,102	60	3,608	4,930
Short Line	4				20	24
US Rail				81		81
	476	1,472	1,446	332	5,721	9,447

Change in Loads on Wheels - Prior 24 Hours

	E Canada	Prince Rupert	Thunder Bay	USA/MEX	Vancouver	Total
CN	-32		170	-3	-125	-98
CP	5		-9	-15	-163	-182
Short Line	0				-6	-6
US Rail				1		1
	-27	-108	161	-17	-294	-285



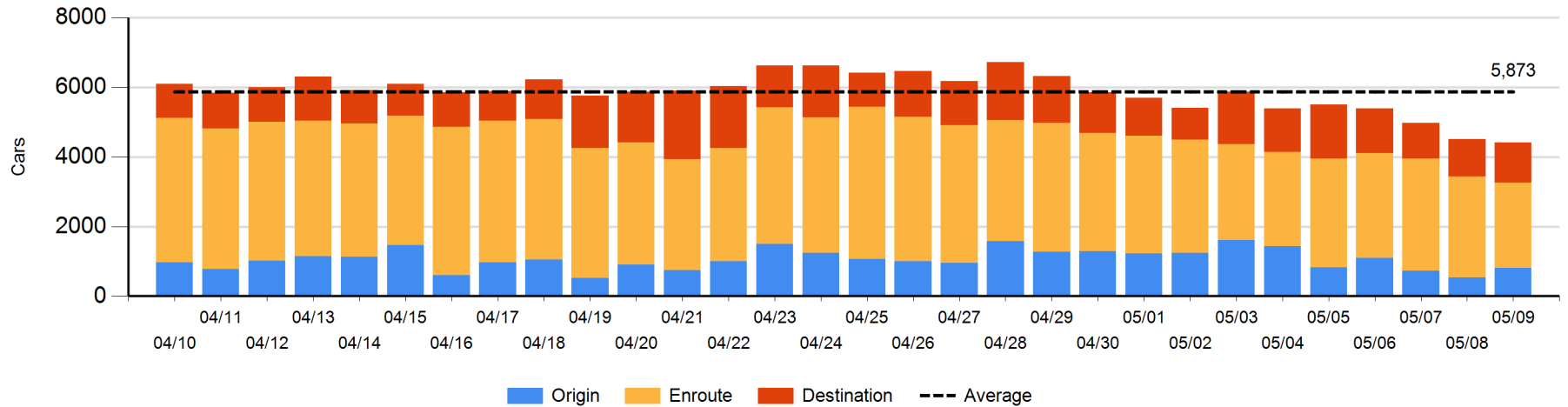
Daily Loads on Wheels By Pipeline Location - 5/9/2019

	E Canada	Prince Rupert	Thunder Bay	USA/MEX	Vancouver	Total
CN						
Origin	1	353	100	19	342	815
Enroute	163	812	229	149	1,098	2,451
Destination	148	307	15	23	653	1,146
	312	1,472	344	191	2,093	4,412
CP						
Origin	38		252	3	559	852
Enroute	110		459	55	2,100	2,724
Destination	12		391	2	949	1,354
	160		1,102	60	3,608	4,930
US Rail / Short Line						
Origin						
Enroute				57		57
Destination	4			24	20	48
	4			81	20	105

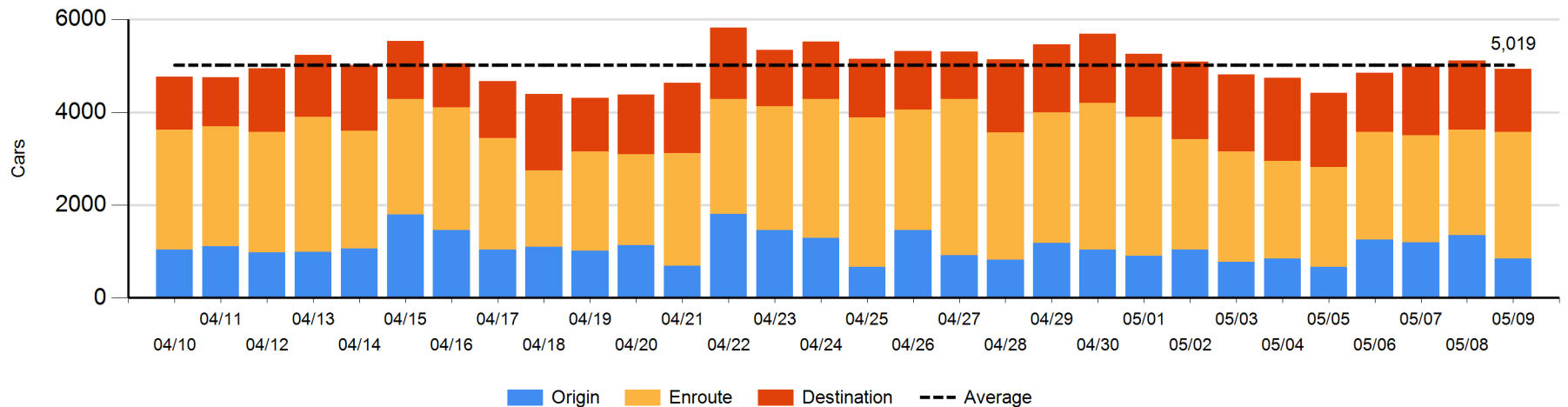
Change in Daily Loads on Wheels By Pipeline Location - Prior 24 Hours

	E Canada	Prince Rupert	Thunder Bay	USA/MEX	Vancouver	Total
CN						
Origin	1	-50	100	-4	230	277
Enroute	-123	-100	102	-1	-322	-444
Destination	90	42	-32	2	-33	69
	-32	-108	170	-3	-125	-98
CP						
Origin	-20		-13	1	-462	-494
Enroute	20		304	-6	128	446
Destination	5		-300	-10	171	-134
	5		-9	-15	-163	-182
US Rail / Short Line						
Origin						
Enroute				1		1
Destination	0			0	-6	-6
	0			1	-6	-5

CN Loads on Wheels by Pipeline Location - 5/9/2019



CP Loads on Wheels by Pipeline Location - 5/9/2019

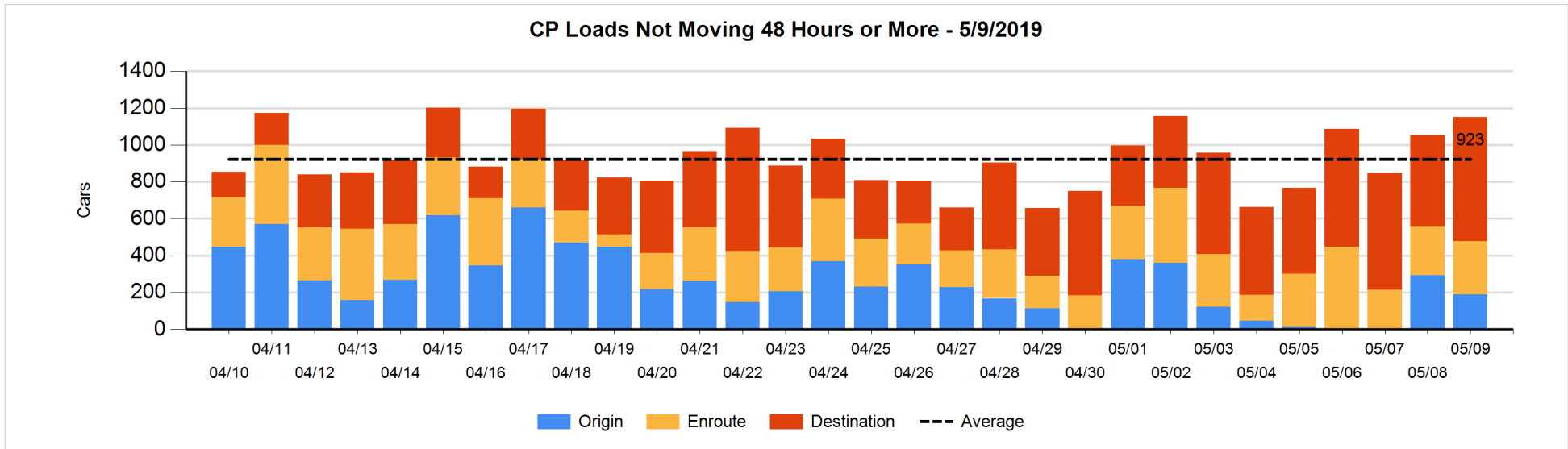
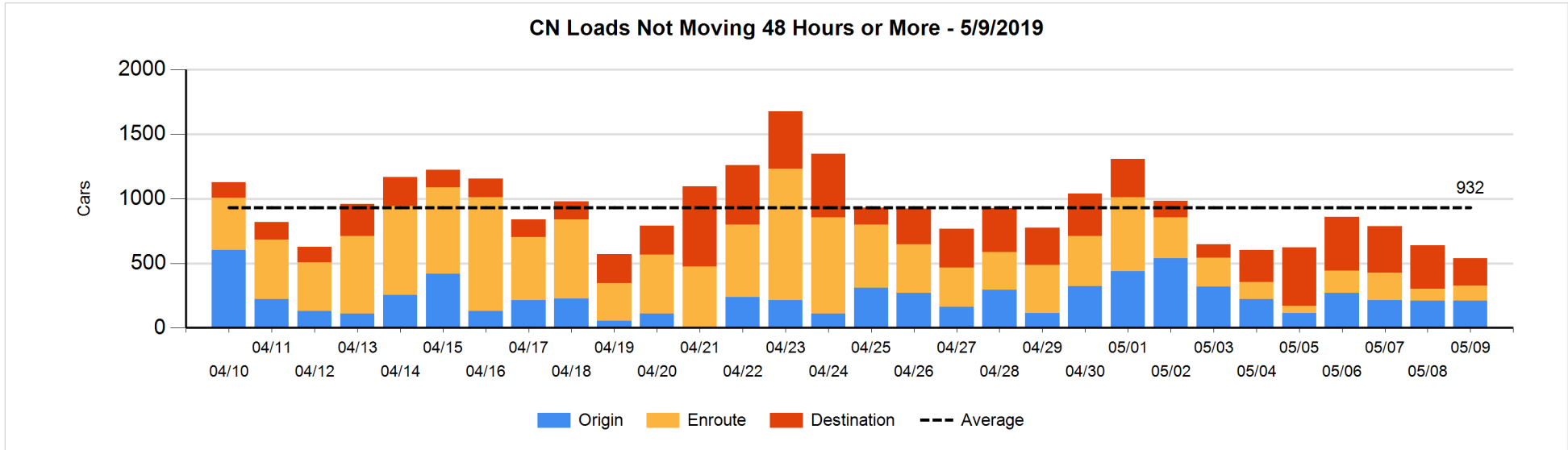


Loads Not Moving 48 Hours or More - 5/9/2019

	E Canada	Prince Rupert	Thunder Bay	USA/MEX	Vancouver	Total
CN						
Origin		105		1	104	210
Enroute	10	10	26	34	37	117
Destination	6	105	14	6	81	212
	16	220	40	41	222	539
CP						
Origin			62		126	188
Enroute	1		3	3	284	291
Destination	6		160	2	503	671
	7		225	5	913	1150
US Rail / Short Line						
Origin						
Enroute				17		17
Destination	1			19	14	34
	1			36	14	51

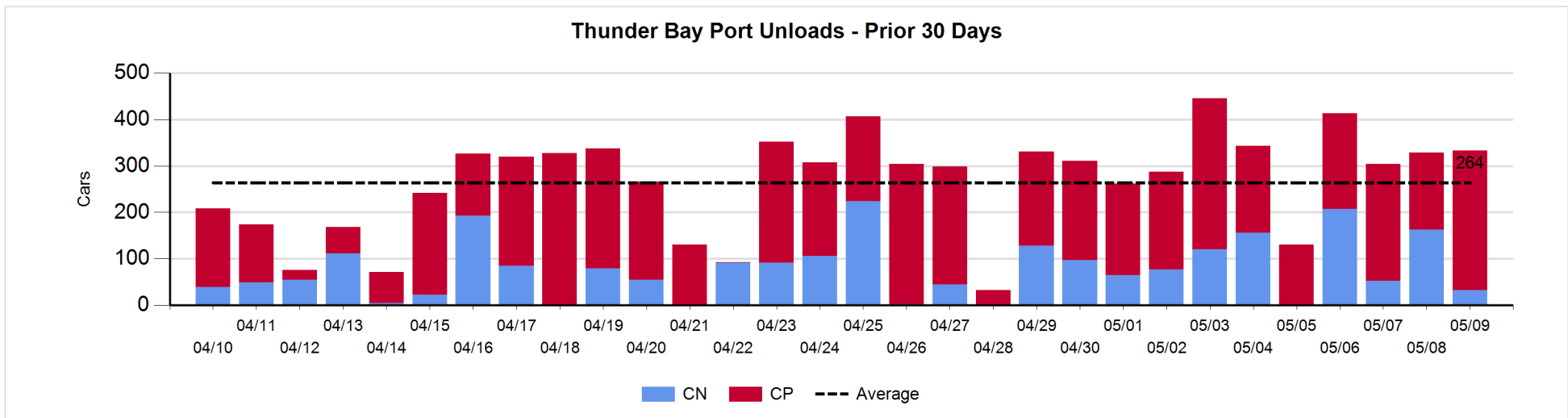
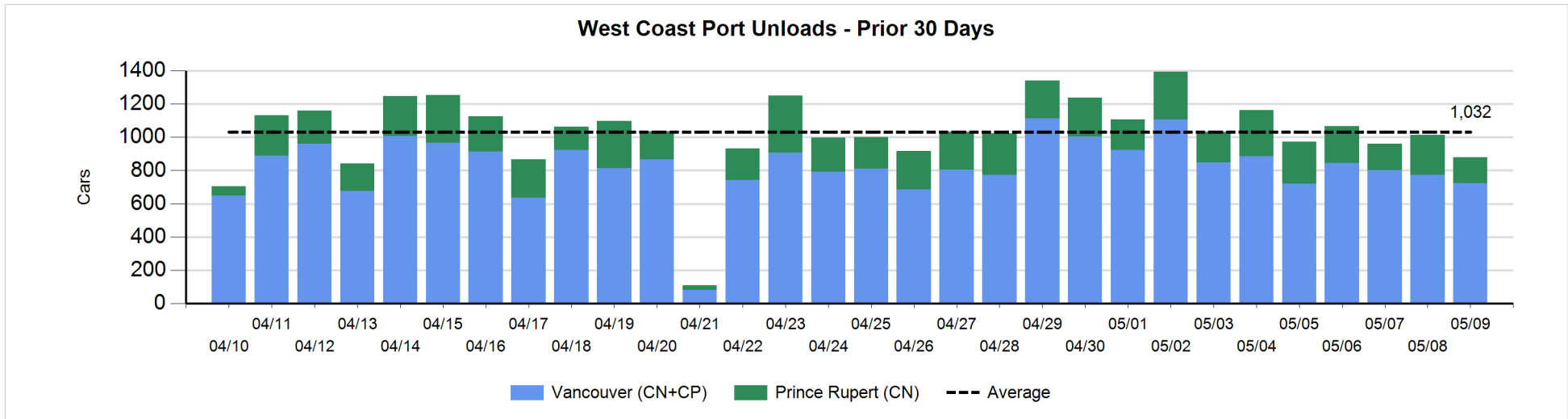
Change in Loads Not Moving 48 Hours or More - 5/9/2019

	E Canada	Prince Rupert	Thunder Bay	USA/MEX	Vancouver	Total
CN						
Origin		0		0	-1	-1
Enroute	-3	-7	25	-1	13	27
Destination	5	0	-27	-1	-101	-124
	2	-7	-2	-2	-89	-98
CP						
Origin			0		-105	-105
Enroute	1		-1	1	24	25
Destination	6		63	-10	117	176
	7		62	-9	36	96
US Rail / Short Line						
Origin						
Enroute				-5		-5
Destination	0			7	1	8
	0			2	1	3



Port Unloads - 5/9/2019

	Prince Rupert	Vancouver	West Coast Total	Thunder Bay	Total
CN	156	351	507	32	539
CP		373	373	301	674
	156	724	880	333	1,213



Port Terminal Status

Vancouver

Daily Activity for 5/9/2019

	Cars Arrived	Cars Received in Interchange	Cars Delivered in Interchange	Cars Placed for Unloading	Loads on Wheels at Destination As of 5/9/2019
CN	288	17	89	432	653
CP	573	89	34	240	949
SRY	1	17		7	20

Port Unloads

	05/09	05/08	Week To Date	Last Week
CN	351	365	1,535	3,072
CP	373	410	1,609	3,523
SRY	7	15	63	73

Age Profile of Loaded Cars Waiting Placement for Unloading

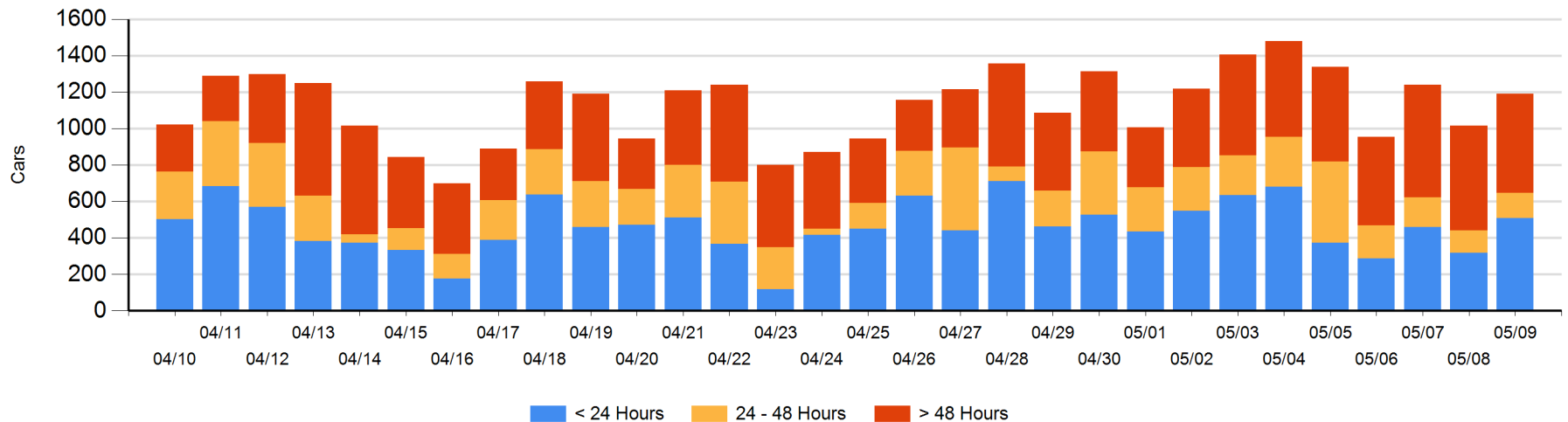
Today

	< 24 Hrs	24 - 48 Hrs	> 48-72 Hrs	> 72 Hrs	Total On Hand
CN	176	108	8	105	397
CP	334	28	86	347	795
SRY					0

Change in Last 24 Hours

	< 24 Hrs	24-48 Hrs	48 - 72 Hrs	> 72 Hrs
CN	-129	71	-20	-58
CP	321	-58	-32	81
SRY				

Loaded Cars on Hand Vancouver Waiting for Placement - Last 30 Days All Railways



Port Terminal Status

Prince Rupert

Daily Activity for 5/9/2019

	Cars Arrived	Cars Received in Interchange	Cars Delivered in Interchange	Cars Placed for Unloading	Loads on Wheels at Destination As of 5/9/2019
CN	199			198	307

Port Unloads

	05/09	05/08	Week To Date	Last Week
CN	156	239	779	1,652

Age Profile of Loaded Cars Waiting Placement for Unloading

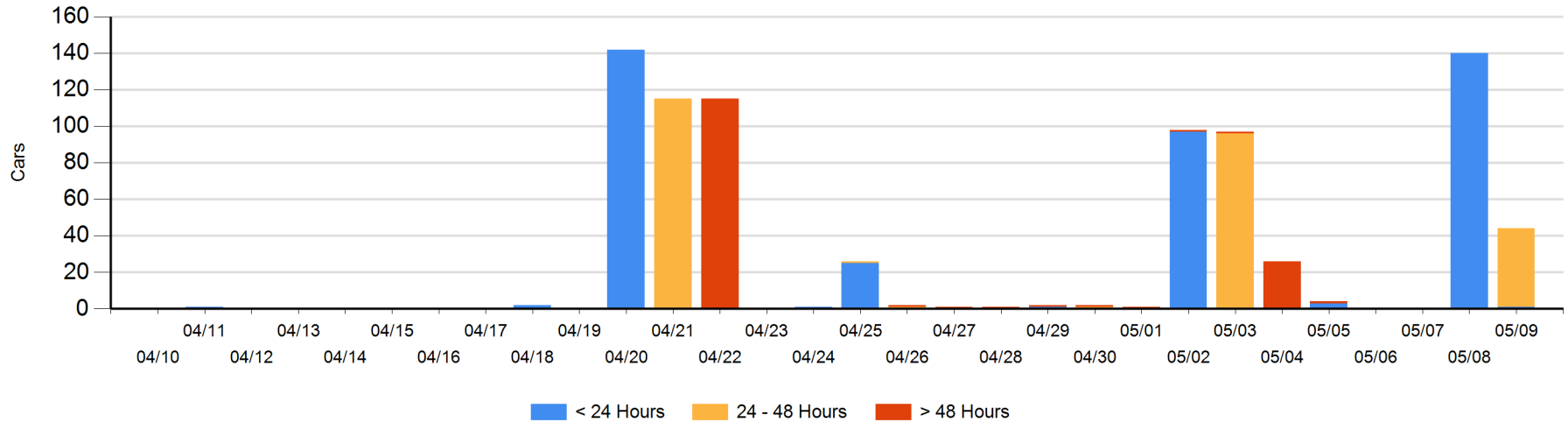
Today

	< 24 Hrs	24 - 48 Hrs	> 48-72 Hrs	> 72 Hrs	Total On Hand
CN	1	43			44

Change in Last 24 Hours

	< 24 Hrs	24-48 Hrs	48 - 72 Hrs	> 72 Hrs
CN	-139	43		

Loaded Cars on Hand Prince Rupert Waiting for Placement - Last 30 Days All Railways



Port Terminal Status

Thunder Bay

Daily Activity for 5/9/2019

	Cars Arrived	Cars Received in Interchange	Cars Delivered in Interchange	Cars Placed for Unloading	Loads on Wheels at Destination As of 5/9/2019
CN					15
CP	1			220	391

Port Unloads

	05/09	05/08	Week To Date	Last Week
CN	32	163	454	644
CP	301	166	925	1,466

Age Profile of Loaded Cars Waiting Placement for Unloading

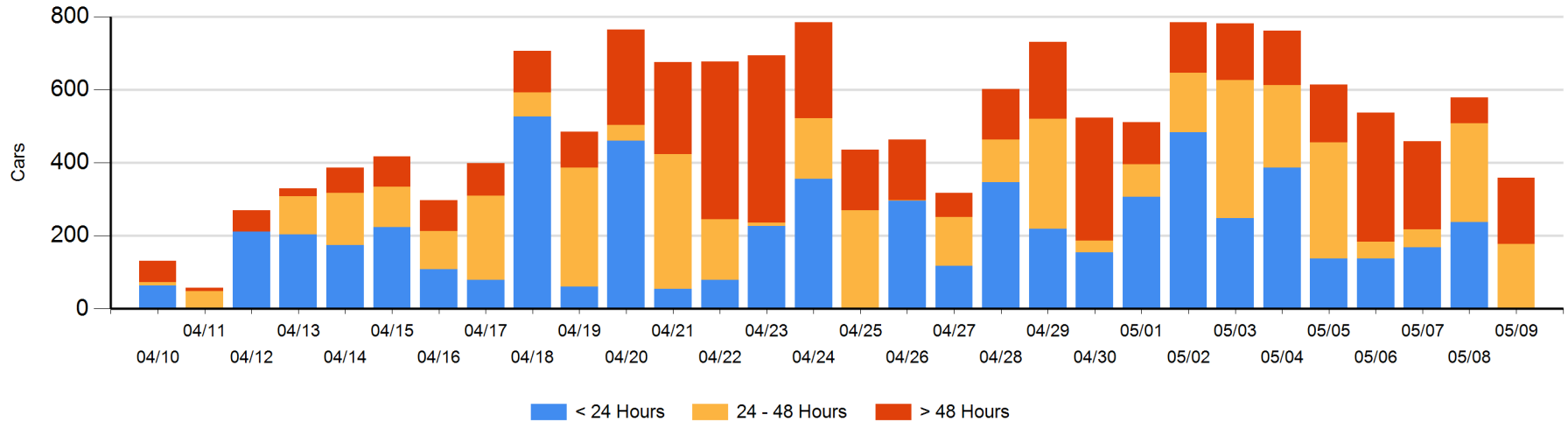
Today

	< 24 Hrs	24 - 48 Hrs	> 48-72 Hrs	> 72 Hrs	Total On Hand
CN				2	2
CP	1	176	112	68	357

Change in Last 24 Hours

	< 24 Hrs	24-48 Hrs	48 - 72 Hrs	> 72 Hrs
CN				0
CP	-236	-95	83	29

Loaded Cars on Hand Thunder Bay Waiting for Placement - Last 30 Days All Railways



Measurement Definitions

Loads on Wheels	<p>Count of loaded rail cars including all rail cars that have been released loaded at origin and have not been reported by the railway as unloaded at destination.</p> <p>Counts include all rail cars (hopper cars and boxcars) moving within a pipeline.</p>
Loads Not Moving	<p>Loaded rail cars for which the railways have not reported a movement event for 48 hours or more whether the rail car is at origin, enroute or at destination.</p>
Port Unloads	<p>Count of rail cars reported by railways as unloaded at the western port destinations of Vancouver, Prince Rupert and Thunder Bay.</p> <p>Unload counts include all rail cars (hopper cars and boxcars) unloaded by all receivers including major port terminals, transloaders and other receivers.</p>
Cars Arrived	<p>Count of rail cars reported as arrived at the destination railway terminal.</p>
Cars Received in Interchange	<p>Count of rail cars received in interchange by each railway within a destination railway terminal. Interchange activity is tracked for the Vancouver and Thunder Bay pipelines as applicable.</p>
Cars Delivered in Interchange	<p>Count of rail cars delivered in interchange by each railway within a destination railway terminal. Interchange activity is tracked for the Vancouver and Thunder Bay pipelines as applicable.</p>
Cars Placed for Unloading	<p>Count of rail cars reported by the railways as placed loaded at the receiver's facility for unloading.</p>
Loads on Wheels at Destination	<p>Count of rail cars that remain under load within the destination railway terminal including rail cars that have been reported as placed for unloading but not yet reported as unloaded.</p>
Waiting Placement for Unloading	<p>Count of rail cars that have been reported as arrived at the destination railway terminal but not reported as placed for unloading by the railway.</p> <p>For the Ports of Vancouver, Prince Rupert and Thunder Bay the count of rail cars waiting placement for unloading is categorized by age – i.e. the elapsed time from arrival at destination to the current report date.</p>