

SPEED READ

- Loads on wheels increased overnight, marking a rise in both CN and CP volumes. On a net basis, volumes increased due to higher volumes across all corridors other than Thunder Bay.
- Network fluidity deteriorated overnight, led by an increase in idle car counts on CP by 2% (+22) offset by a decline in idle car counts on CN by 1% (-10). The total count of cars for 4+ days on both railways declined slightly by 1% (-12) overnight - currently at 941 cars.
- Four days in Week 42 unloads now behind prior week's performance by nearly 700 unloads, marking lower unloads at Vancouver and Thunder Bay offset by improved week over week performance at Prince Rupert.

Loads on Wheels

- Loads on wheels increased 7% (+640) overnight, due to higher volumes on both CN and CP - combined total at 9,235 and 13% below the trailing 30-day average.
- On a net basis, the rise in loads on wheels reflects higher volumes across all corridors other than Thunder Bay.
- CN volumes increased 5% (+203) overnight, with higher traffic across all corridors other than Thunder Bay. System wide CN loads on wheels presently at 4,396 and 20% below the trailing 30-day average.
- CP volumes increased significantly by 10% (+442) overnight, driven by a rise in volumes across all corridors - Vancouver, Thunder Bay, USA/MEX and E. Canada. CP system wide loads on wheels currently at 4,682 and 5% below the trailing 30-day average.
- Vancouver currently at 5,364, increased 8% (+402) overnight, now 15% below the trailing 30-day average.
- The Prince Rupert pipeline currently at 1,404, increased significantly by 11% (+141) overnight, and 12% below the trailing 30-day average.
- Thunder Bay volumes declined 7% (-117) overnight - currently at 1,466 and 6% below the trailing 30-day average, with 73% of traffic moving on CP.

Hopper Car Rationing

- CN rationed 104 hopper cars in week 40.

Loads Not Moving

- **The count of cars not moving for 48+ hours increased slightly by 1% (+12) overnight, marking higher counts on CP offset by lower counts on CN. Idle car counts currently at 1,722 and 4% below the trailing 30-day average.**
- CN
 - **The count of idle cars for 48+ hours declined marginally by 1% (-10) overnight - currently at 677 cars.**
 - The number of cars idle for 4+ days increased 21% (+55) overnight - presently at 322 cars.
 - The count of cars not moving for 7+ days decreased 2% (-3) overnight - presently at 133 cars.
 - Vancouver represents 60% of all idle cars.
 - In total 39% of all idle cars are dwelling at origin locations.
- CP
 - **CP idle car counts for 48+ hours increased 2% (+22) overnight - currently at 1,045 cars.**
 - The number of cars idle for 4+ days declined 10% (-67) overnight - currently at 619 cars.
 - The number of cars idle for 7+ days fell for the third consecutive day, down 26% (-84) overnight - currently at 233 cars.
 - Vancouver accounts for 90% of all idle cars.

- In total 25% of all idle cars are dwelling at origin locations.

Port Performance

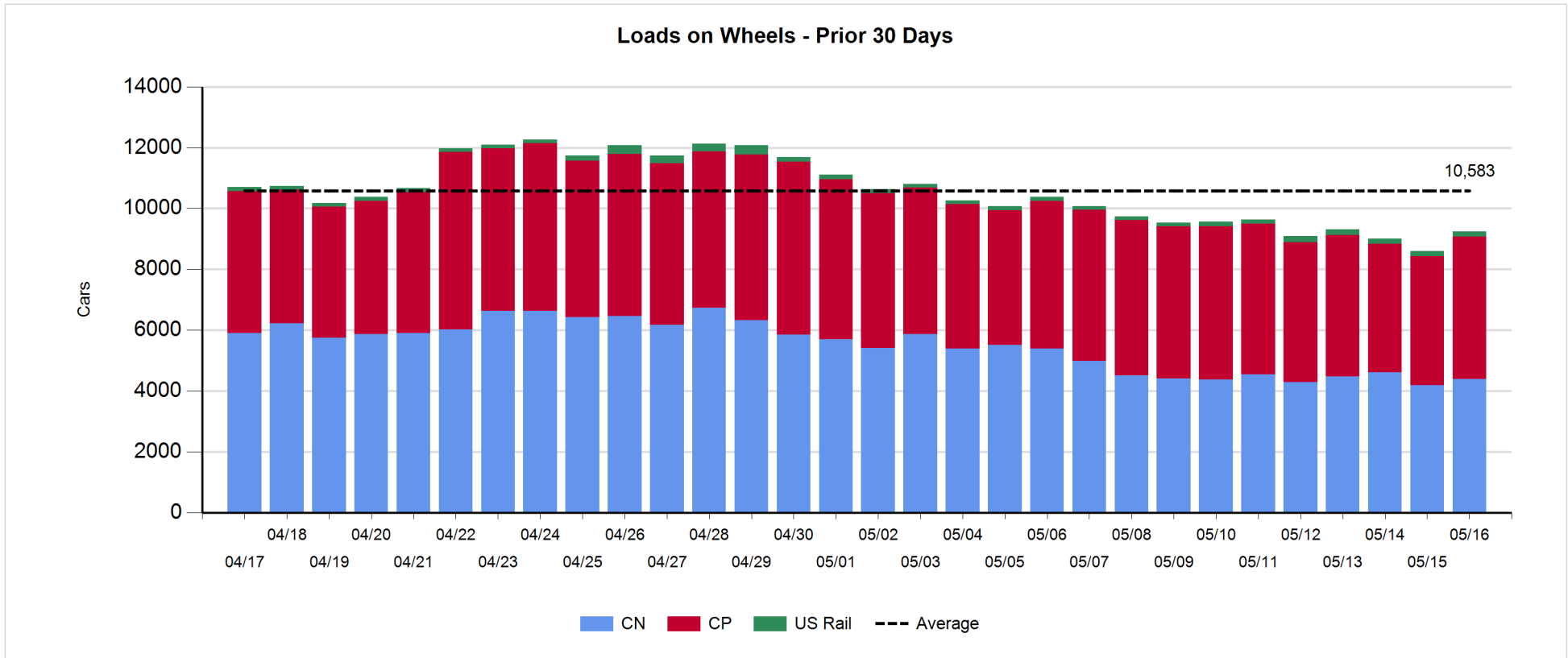
- CN and CP reported a total of 1,138 cars unloaded at the three major ports, now 11% below the trailing 30-day average. Four days in Week 42 unloads now behind last week's pace by around 700 unloads, marking lower unloads at Vancouver and Thunder Bay offset by higher unloads at Prince Rupert.
- Vancouver
 - 683 unloads reported by CN and CP at the Port of Vancouver; CN - 230 and CP - 453. Four days in Week 42 unloads are tracking behind last week's performance by 400 unloads.
 - There are 1,350 cars on site at Vancouver with 550 cars arriving at the port in the last 24 hours.
 - CN and CP have more than 1,100 cars in British Columbia en route to Vancouver, with 750 cars at Kamloops and west, and 68% of traffic moving on CP.
- Prince Rupert
 - Prince Rupert reported 175 unloads, now ahead of last week's unloads after four days by 27 unloads.
 - Loads on wheels now above 1,000 cars - currently at 1,404 cars.
 - There are 500 cars west of Jasper en route to Prince Rupert.
 - There are more than 250 cars on site at Prince Rupert with 100 cars arriving at the port in the last 24 hours.
- Thunder Bay
 - 280 unloads were reported at Thunder Bay yesterday. Four days in Week 42 unloads are tracking behind last week's pace by 300 unloads.
 - There are 600 cars on site at Thunder Bay with more than 250 cars arriving at the port in the prior 24 hours.
 - There are nearly 50 cars en route to Thunder Bay from Winnipeg and east.

Daily Loads on Wheels - 5/16/2019

| | E Canada | Prince Rupert | Thunder Bay | USA/MEX | Vancouver | Total |
|------------|----------|---------------|-------------|---------|-----------|-------|
| CN | 468 | 1,404 | 394 | 183 | 1,947 | 4,396 |
| CP | 137 | | 1,072 | 81 | 3,392 | 4,682 |
| Short Line | 6 | | | | 25 | 31 |
| US Rail | | | | 126 | | 126 |
| | 611 | 1,404 | 1,466 | 390 | 5,364 | 9,235 |

Change in Loads on Wheels - Prior 24 Hours

| | E Canada | Prince Rupert | Thunder Bay | USA/MEX | Vancouver | Total |
|------------|----------|---------------|-------------|---------|-----------|-------|
| CN | 135 | 141 | -158 | 16 | 69 | 203 |
| CP | 38 | | 41 | 26 | 337 | 442 |
| Short Line | -1 | | | | -4 | -5 |
| US Rail | | | | 0 | | 0 |
| | 172 | 141 | -117 | 42 | 402 | 640 |

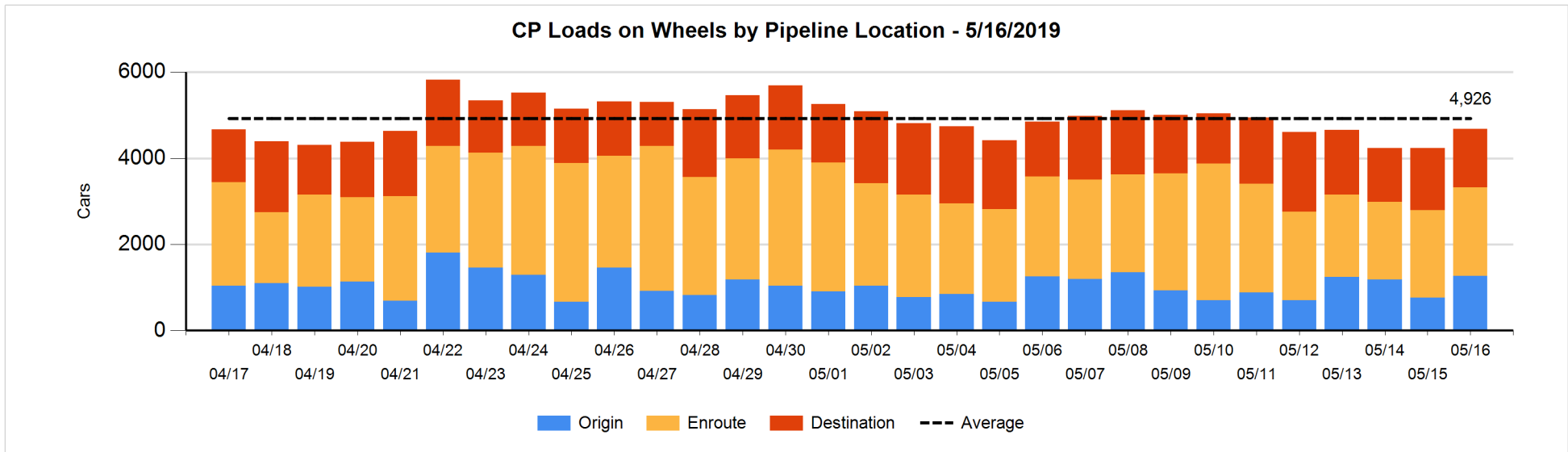
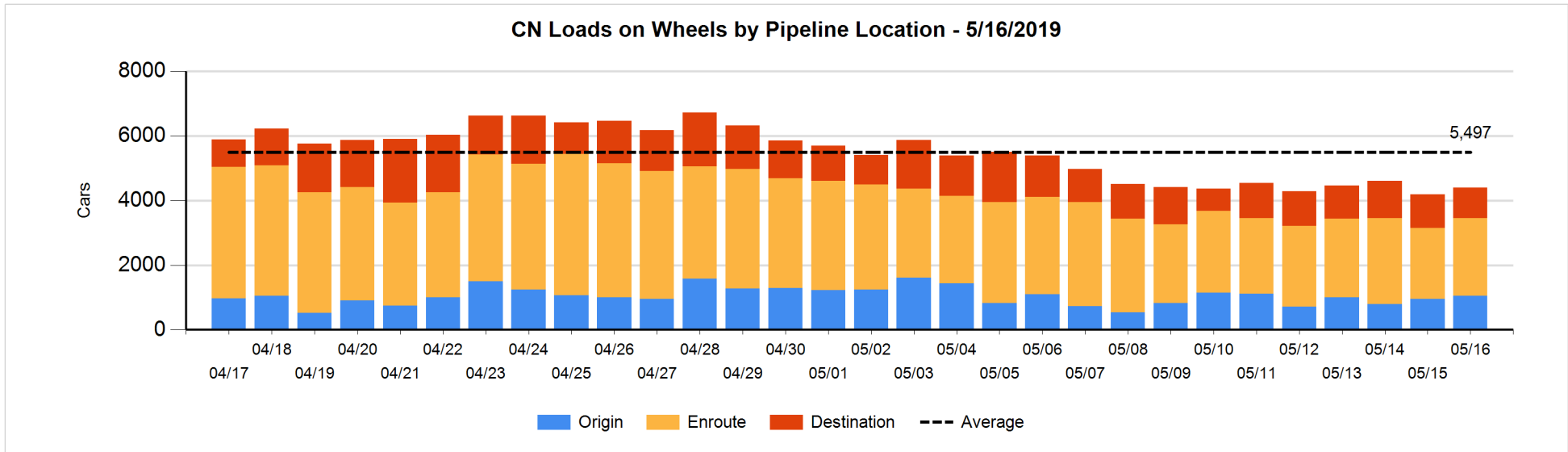


Daily Loads on Wheels By Pipeline Location - 5/16/2019

| | E Canada | Prince Rupert | Thunder Bay | USA/MEX | Vancouver | Total |
|----------------------|----------|---------------|-------------|---------|-----------|-------|
| CN | | | | | | |
| Origin | 52 | 192 | 1 | 26 | 785 | 1,056 |
| Enroute | 321 | 944 | 213 | 140 | 781 | 2,399 |
| Destination | 95 | 268 | 180 | 17 | 381 | 941 |
| | 468 | 1,404 | 394 | 183 | 1,947 | 4,396 |
| CP | | | | | | |
| Origin | 58 | | 201 | 49 | 960 | 1,268 |
| Enroute | 77 | | 458 | 24 | 1,491 | 2,050 |
| Destination | 2 | | 413 | 8 | 941 | 1,364 |
| | 137 | | 1,072 | 81 | 3,392 | 4,682 |
| US Rail / Short Line | | | | | | |
| Origin | | | | | | |
| Enroute | | | | 77 | | 77 |
| Destination | 6 | | | 49 | 25 | 80 |
| | 6 | | | 126 | 25 | 157 |

Change in Daily Loads on Wheels By Pipeline Location - Prior 24 Hours

| | E Canada | Prince Rupert | Thunder Bay | USA/MEX | Vancouver | Total |
|----------------------|----------|---------------|-------------|---------|-----------|-------|
| CN | | | | | | |
| Origin | -100 | -73 | -50 | 19 | 306 | 102 |
| Enroute | 142 | 288 | -4 | -1 | -220 | 205 |
| Destination | 93 | -74 | -104 | -2 | -17 | -104 |
| | 135 | 141 | -158 | 16 | 69 | 203 |
| CP | | | | | | |
| Origin | 38 | | 41 | 20 | 402 | 501 |
| Enroute | 17 | | -94 | 6 | 98 | 27 |
| Destination | -17 | | 94 | 0 | -163 | -86 |
| | 38 | | 41 | 26 | 337 | 442 |
| US Rail / Short Line | | | | | | |
| Origin | | | | | | |
| Enroute | | | | 12 | | 12 |
| Destination | -1 | | | -12 | -4 | -17 |
| | -1 | | | 0 | -4 | -5 |

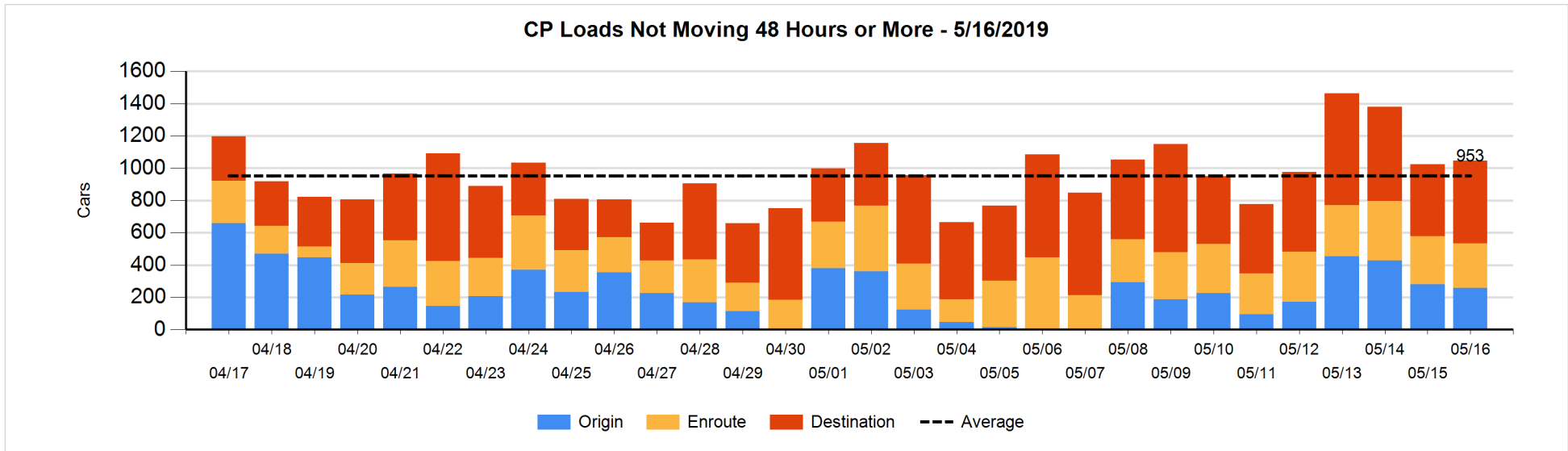
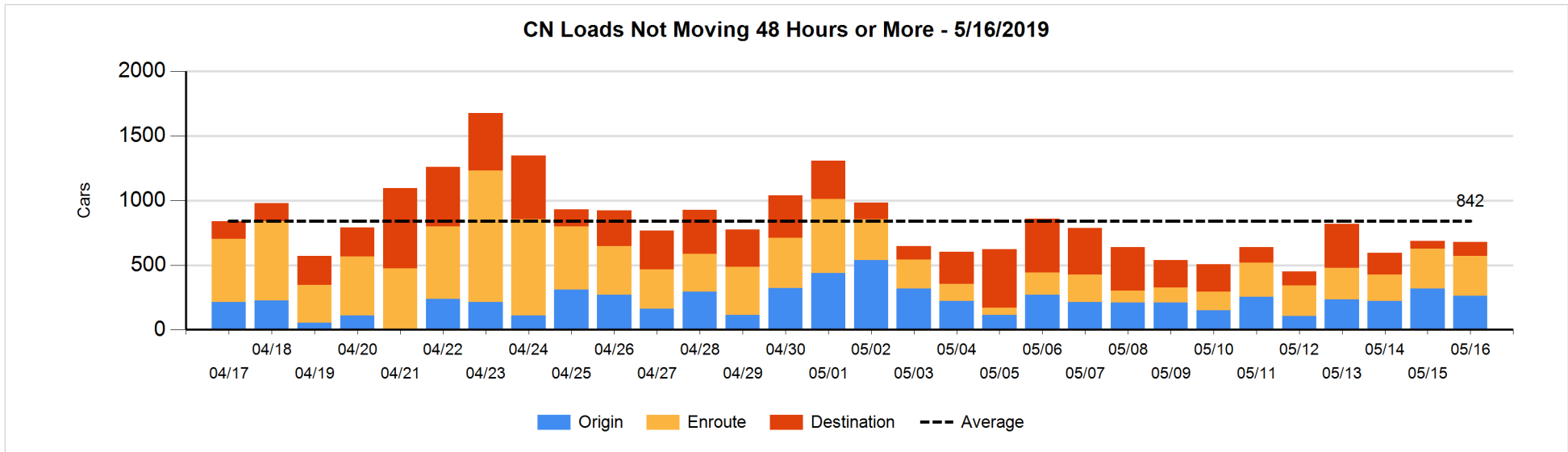


Loads Not Moving 48 Hours or More - 5/16/2019

| | E Canada | Prince Rupert | Thunder Bay | USA/MEX | Vancouver | Total |
|-----------------------------|----------|---------------|-------------|---------|-----------|-------|
| CN | | | | | | |
| Origin | 49 | 1 | | 1 | 212 | 263 |
| Enroute | 10 | 107 | 2 | 25 | 165 | 309 |
| Destination | 1 | 1 | 70 | 6 | 27 | 105 |
| | 60 | 109 | 72 | 32 | 404 | 677 |
| CP | | | | | | |
| Origin | | | 5 | 12 | 240 | 257 |
| Enroute | 4 | | 20 | | 252 | 276 |
| Destination | 2 | | 54 | 8 | 448 | 512 |
| | 6 | | 79 | 20 | 940 | 1045 |
| US Rail / Short Line | | | | | | |
| Origin | | | | | | |
| Enroute | | | | 26 | | 26 |
| Destination | 5 | | | 22 | 8 | 35 |
| | 5 | | | 48 | 8 | 61 |

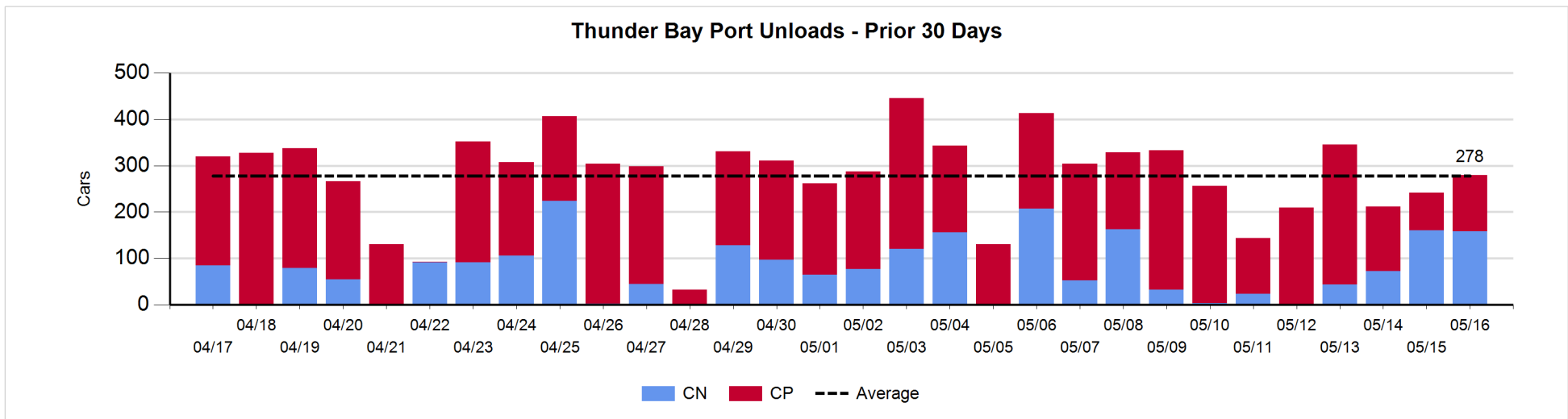
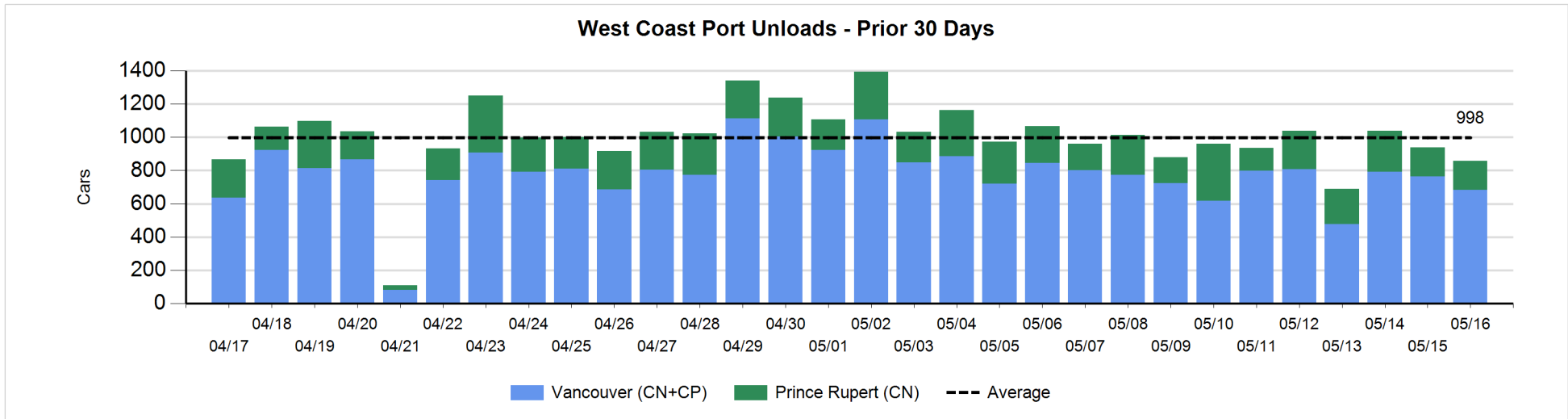
Change in Loads Not Moving 48 Hours or More - 5/16/2019

| | E Canada | Prince Rupert | Thunder Bay | USA/MEX | Vancouver | Total |
|-----------------------------|----------|---------------|-------------|---------|-----------|-------|
| CN | | | | | | |
| Origin | 49 | 0 | | 0 | -105 | -56 |
| Enroute | -2 | 3 | 1 | -2 | 1 | 1 |
| Destination | 0 | 0 | 45 | -1 | 1 | 45 |
| | 47 | 3 | 46 | -3 | -103 | -10 |
| CP | | | | | | |
| Origin | | | -11 | 12 | -23 | -22 |
| Enroute | -5 | | 20 | | -38 | -23 |
| Destination | 2 | | -13 | 0 | 78 | 67 |
| | -3 | | -4 | 12 | 17 | 22 |
| US Rail / Short Line | | | | | | |
| Origin | | | | | | |
| Enroute | | | | 2 | | 2 |
| Destination | 0 | | | -4 | -8 | -12 |
| | 0 | | | -2 | -8 | -10 |



Port Unloads - 5/16/2019

| | Prince Rupert | Vancouver | West Coast Total | Thunder Bay | Total |
|----|---------------|-----------|------------------|-------------|-------|
| CN | 175 | 230 | 405 | 158 | 563 |
| CP | | 453 | 453 | 122 | 575 |
| | 175 | 683 | 858 | 280 | 1,138 |



Port Terminal Status

Vancouver

Daily Activity for 5/16/2019

| | Cars Arrived | Cars Received in Interchange | Cars Delivered in Interchange | Cars Placed for Unloading | Loads on Wheels at Destination As of 5/16/2019 |
|-----|--------------|------------------------------|-------------------------------|---------------------------|--|
| CN | 213 | | 104 | 197 | 381 |
| CP | 328 | 104 | | 249 | 941 |
| SRY | | | | 14 | 25 |

Port Unloads

| | 05/16 | 05/15 | Week To Date | Last Week |
|-----|-------|-------|--------------|-----------|
| CN | 230 | 330 | 1,084 | 2,583 |
| CP | 453 | 433 | 1,633 | 2,786 |
| SRY | 13 | 26 | 82 | 79 |

Age Profile of Loaded Cars Waiting Placement for Unloading

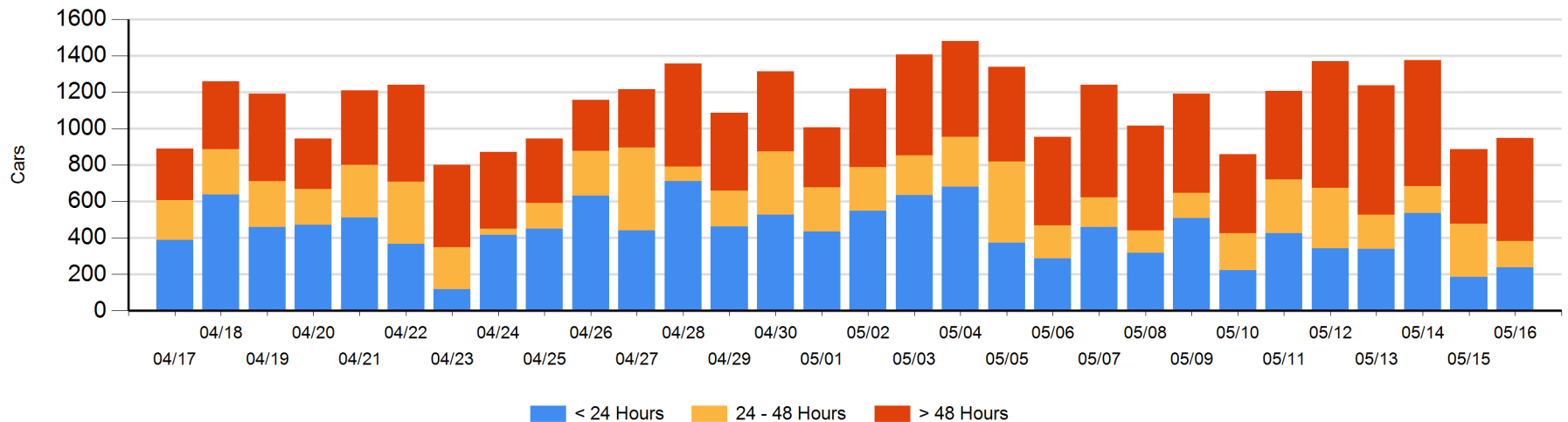
Today

| | < 24 Hrs | 24 - 48 Hrs | > 48-72 Hrs | > 72 Hrs | Total On Hand |
|-----|----------|-------------|-------------|----------|---------------|
| CN | 135 | 13 | 15 | 172 | 335 |
| CP | 103 | 133 | 225 | 152 | 613 |
| SRY | | | | | 0 |

Change in Last 24 Hours

| | < 24 Hrs | 24-48 Hrs | 48 - 72 Hrs | > 72 Hrs |
|-----|----------|-----------|-------------|----------|
| CN | 107 | -18 | -76 | 47 |
| CP | -54 | -130 | 198 | -12 |
| SRY | | | | |

Loaded Cars on Hand Vancouver Waiting for Placement - Last 30 Days All Railways



Port Terminal Status

Prince Rupert

Daily Activity for 5/16/2019

| | Cars Arrived | Cars Received in Interchange | Cars Delivered in Interchange | Cars Placed for Unloading | Loads on Wheels at Destination As of 5/16/2019 |
|----|--------------|------------------------------|-------------------------------|---------------------------|--|
| CN | 101 | | | 101 | 268 |

Port Unloads

| | 05/16 | 05/15 | Week To Date | Last Week |
|----|-------|-------|--------------|-----------|
| CN | 175 | 176 | 806 | 1,489 |

Age Profile of Loaded Cars Waiting Placement for Unloading

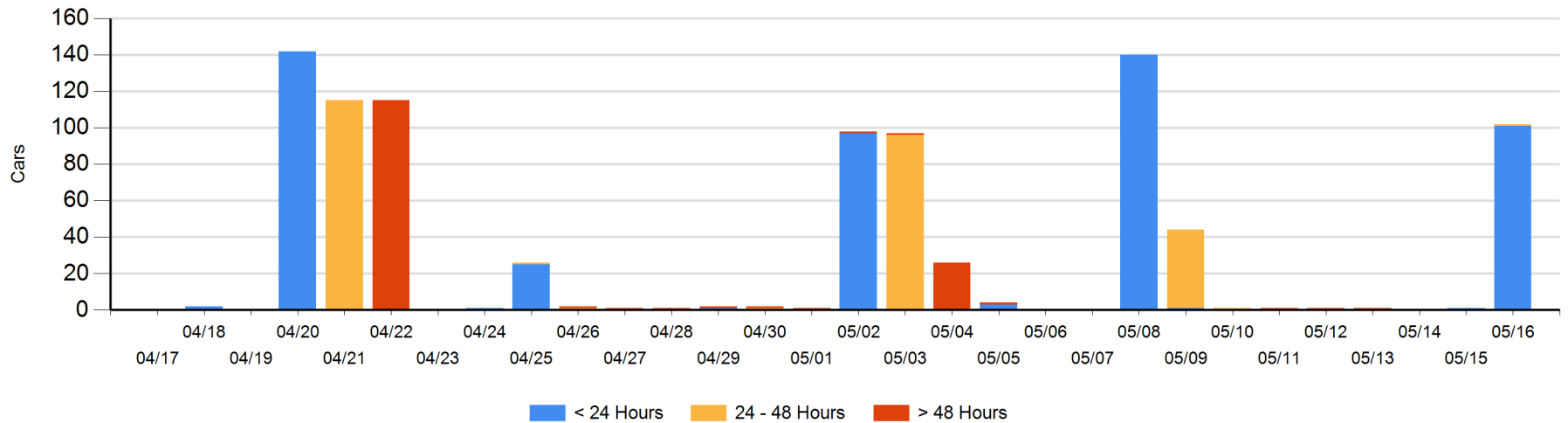
Today

| | < 24 Hrs | 24 - 48 Hrs | > 48-72 Hrs | > 72 Hrs | Total On Hand |
|----|----------|-------------|-------------|----------|---------------|
| CN | 101 | 1 | | | 102 |

Change in Last 24 Hours

| | < 24 Hrs | 24-48 Hrs | 48 - 72 Hrs | > 72 Hrs |
|----|----------|-----------|-------------|----------|
| CN | 100 | 1 | | |

Loaded Cars on Hand Prince Rupert Waiting for Placement - Last 30 Days All Railways



Port Terminal Status

Thunder Bay

Daily Activity for 5/16/2019

| | Cars Arrived | Cars Received in Interchange | Cars Delivered in Interchange | Cars Placed for Unloading | Loads on Wheels at Destination As of 5/16/2019 |
|----|--------------|------------------------------|-------------------------------|---------------------------|--|
| CN | 54 | | | 105 | 180 |
| CP | 216 | | | 64 | 413 |

Port Unloads

| | 05/16 | 05/15 | Week To Date | Last Week |
|----|-------|-------|--------------|-----------|
| CN | 158 | 160 | 435 | 482 |
| CP | 122 | 82 | 644 | 1,507 |

Age Profile of Loaded Cars Waiting Placement for Unloading

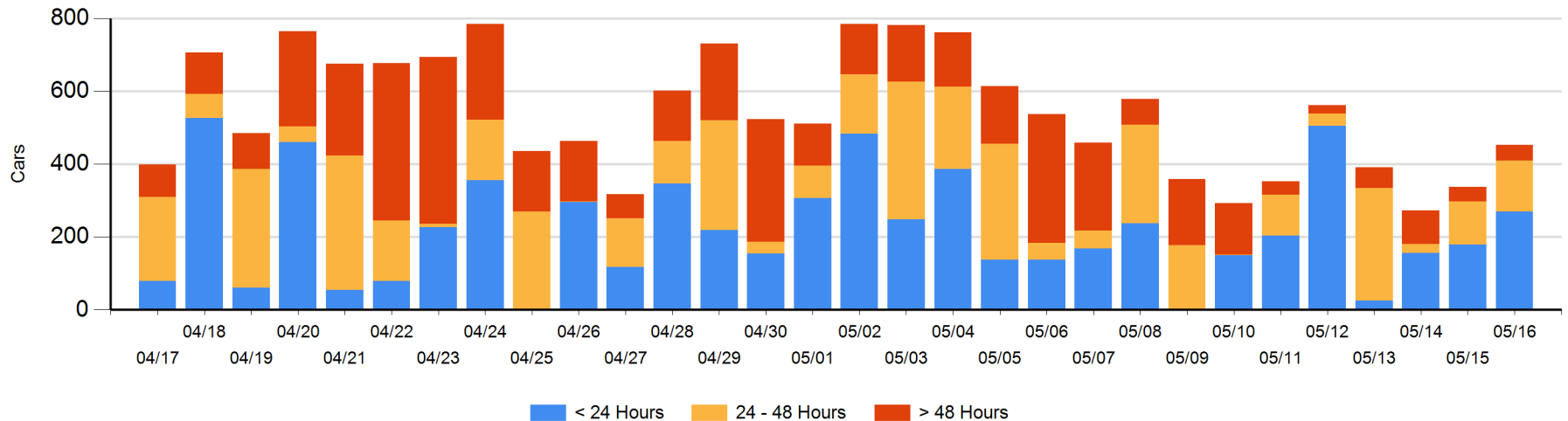
Today

| | < 24 Hrs | 24 - 48 Hrs | > 48-72 Hrs | > 72 Hrs | Total On Hand |
|----|----------|-------------|-------------|----------|---------------|
| CN | 54 | 1 | 6 | | 61 |
| CP | 216 | 138 | 8 | 29 | 391 |

Change in Last 24 Hours

| | < 24 Hrs | 24-48 Hrs | 48 - 72 Hrs | > 72 Hrs |
|----|----------|-----------|-------------|----------|
| CN | 53 | -110 | 6 | |
| CP | 38 | 130 | 3 | -6 |

Loaded Cars on Hand Thunder Bay Waiting for Placement - Last 30 Days All Railways



Measurement Definitions

| | |
|---------------------------------|---|
| Loads on Wheels | <p>Count of loaded rail cars including all rail cars that have been released loaded at origin and have not been reported by the railway as unloaded at destination.</p> <p>Counts include all rail cars (hopper cars and boxcars) moving within a pipeline.</p> |
| Loads Not Moving | <p>Loaded rail cars for which the railways have not reported a movement event for 48 hours or more whether the rail car is at origin, enroute or at destination.</p> |
| Port Unloads | <p>Count of rail cars reported by railways as unloaded at the western port destinations of Vancouver, Prince Rupert and Thunder Bay.</p> <p>Unload counts include all rail cars (hopper cars and boxcars) unloaded by all receivers including major port terminals, transloaders and other receivers.</p> |
| Cars Arrived | <p>Count of rail cars reported as arrived at the destination railway terminal.</p> |
| Cars Received in Interchange | <p>Count of rail cars received in interchange by each railway within a destination railway terminal. Interchange activity is tracked for the Vancouver and Thunder Bay pipelines as applicable.</p> |
| Cars Delivered in Interchange | <p>Count of rail cars delivered in interchange by each railway within a destination railway terminal. Interchange activity is tracked for the Vancouver and Thunder Bay pipelines as applicable.</p> |
| Cars Placed for Unloading | <p>Count of rail cars reported by the railways as placed loaded at the receiver's facility for unloading.</p> |
| Loads on Wheels at Destination | <p>Count of rail cars that remain under load within the destination railway terminal including rail cars that have been reported as placed for unloading but not yet reported as unloaded.</p> |
| Waiting Placement for Unloading | <p>Count of rail cars that have been reported as arrived at the destination railway terminal but not reported as placed for unloading by the railway.</p> <p>For the Ports of Vancouver, Prince Rupert and Thunder Bay the count of rail cars waiting placement for unloading is categorized by age – i.e. the elapsed time from arrival at destination to the current report date.</p> |