

## SPEED READ

- Loads on wheels decreased overnight, reflecting lower CP traffic offset by an increase in CN volumes. On a net basis, volumes fell due to reduced traffic in the Prince Rupert, Vancouver and USA/MEX corridors offset by higher volumes in the E. Canada and Thunder Bay corridors.
- Network fluidity deteriorated overnight, led by an increase in idle car counts on both CN and CP by 49% (+232) and 3% (+43), respectively. The total count of cars for 4+ days on both railways decreased 8% (-71) overnight - now at 813 cars.
- One day in Week 43 unloads now behind prior week's performance by less than 150 unloads, marking reduced unloads at Thunder Bay offset by improved week over week performance at Vancouver and Prince Rupert.

---

## Loads on Wheels

- Loads on wheels declined for the third consecutive day, down 3% (-291) overnight, due to lower volumes on CP offset by higher traffic on CN - combined total at 8,172, the lowest seen in the last 30 days, and 21% below the trailing 30-day average.
- On a net basis, the decline in loads on wheels reflects lower traffic in the Prince Rupert, Vancouver and USA/MEX corridors offset by higher volumes in the E. Canada and Thunder Bay corridors.
- CN volumes increased 6% (+254) overnight, with higher traffic in the Vancouver, E. Canada and Thunder Bay corridors offset by reduced traffic in the Prince Rupert and USA/MEX corridors. System wide CN loads on wheels now at 4,385 and 17% below the trailing 30-day average.
- CP volumes fell for the third consecutive day, down 13% (-532) overnight, driven by a decline in volumes across all corridors - Vancouver, Thunder Bay, USA/MEX and E. Canada. CP system wide loads on wheels presently at 3,662, the lowest seen in the last 30 days, and 25% below the trailing 30-day average.
- Vancouver presently at 4,846, the lowest seen in the last 30 days, decreased for the third consecutive day, down 2% (-88) overnight, now 22% below the trailing 30-day average.
- The Prince Rupert pipeline presently at 1,134, the lowest seen in the last 30 days, decreased significantly by 16% (-220) overnight and have now declined for the third consecutive day, and 27% below the trailing 30-day average.
- Thunder Bay volumes increased slightly (+1) overnight - now at 1,166 and 24% below the trailing 30-day average, with 72% of traffic moving on CP.

## Hopper Car Rationing

- CN rationed 104 hopper cars in week 41.

## Loads Not Moving

- **The count of cars not moving for 48+ hours increased for the third consecutive day, up 16% (+275) overnight, reflecting higher counts on both CN and CP. Idle car counts now at 2,013 and 13% above the trailing 30-day average.**
- CN
  - **The count of idle cars for 48+ hours increased significantly by 49% (+232) overnight - presently at 706 cars.**
  - The number of cars idle for 4+ days increased significantly by 135% (+113) overnight - presently at 197 cars.
  - The count of cars not moving for 7+ days gained 17% (+8) overnight - now at 56 cars.
  - Vancouver represents 50% of all idle cars.
  - In total 59% of all idle cars are dwelling at origin locations.
- CP
  - **CP idle car counts for 48+ hours increased 3% (+43) overnight and have now increased for the third consecutive day - presently at 1,307**

**cars.**

- The number of cars idle for 4+ days decreased 23% (-184) overnight - now at 616 cars.
- The number of cars idle for 7+ days decreased 28% (-106) overnight - presently at 269 cars.
- Vancouver accounts for 63% of all idle cars.
- In total 16% of all idle cars are dwelling at origin locations.

**Port Performance**

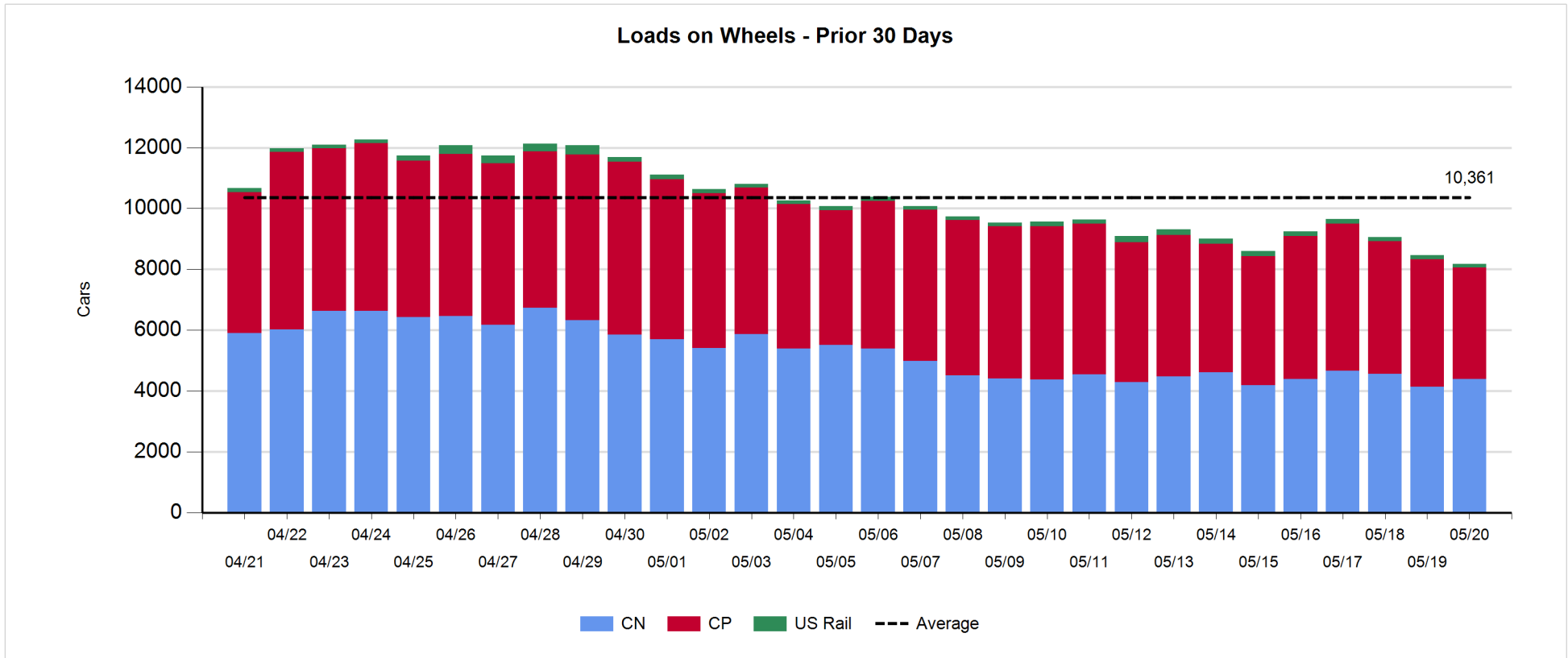
- CN and CP reported a total of 919 cars unloaded at the three major ports, now 26% below the trailing 30-day average. One day in Week 43 unloads now behind last week's pace by around 150 unloads, marking reduced unloads at Thunder Bay offset by higher unloads at Vancouver and Prince Rupert.
- Vancouver
  - 697 unloads reported by CN and CP at the Port of Vancouver; CN - 156 and CP - 541. One day in Week 43 unloads are tracking ahead of last week's performance by 200 unloads.
  - There are more than 1,300 cars on site at Vancouver with less than 850 cars arriving at the port in the last 24 hours.
  - CN and CP have more than 950 cars in British Columbia en route to Vancouver, with 650 cars at Kamloops and west, and 66% of traffic moving on CP.
- Prince Rupert
  - Prince Rupert reported 220 unloads, now ahead of last week's unloads after one day by 9 unloads.
  - Loads on wheels now above 1,000 cars - presently at 1,134 cars.
  - There are more than 150 cars west of Jasper en route to Prince Rupert.
  - There are more than 250 cars on site at Prince Rupert with 400 cars arriving at the port in the last 24 hours.
- Thunder Bay
  - 2 unloads, the lowest seen in the last 30 days, were reported at Thunder Bay yesterday. One day in Week 43 unloads are tracking behind last week's pace by 350 unloads.
  - There are less than 750 cars on site at Thunder Bay with 4 cars arriving at the port in the prior 24 hours.
  - There are 100 cars en route to Thunder Bay from Winnipeg and east.

**Daily Loads on Wheels - 5/20/2019**

	E Canada	Prince Rupert	Thunder Bay	USA/MEX	Vancouver	Total
CN	526	1,134	327	160	2,238	4,385
CP	87		839	148	2,588	3,662
Short Line	5				20	25
US Rail				100		100
	618	1,134	1,166	408	4,846	8,172

**Change in Loads on Wheels - Prior 24 Hours**

	E Canada	Prince Rupert	Thunder Bay	USA/MEX	Vancouver	Total
CN	101	-220	3	-15	385	254
CP	-22		-2	-38	-470	-532
Short Line	0				-3	-3
US Rail				-10		-10
	79	-220	1	-63	-88	-291

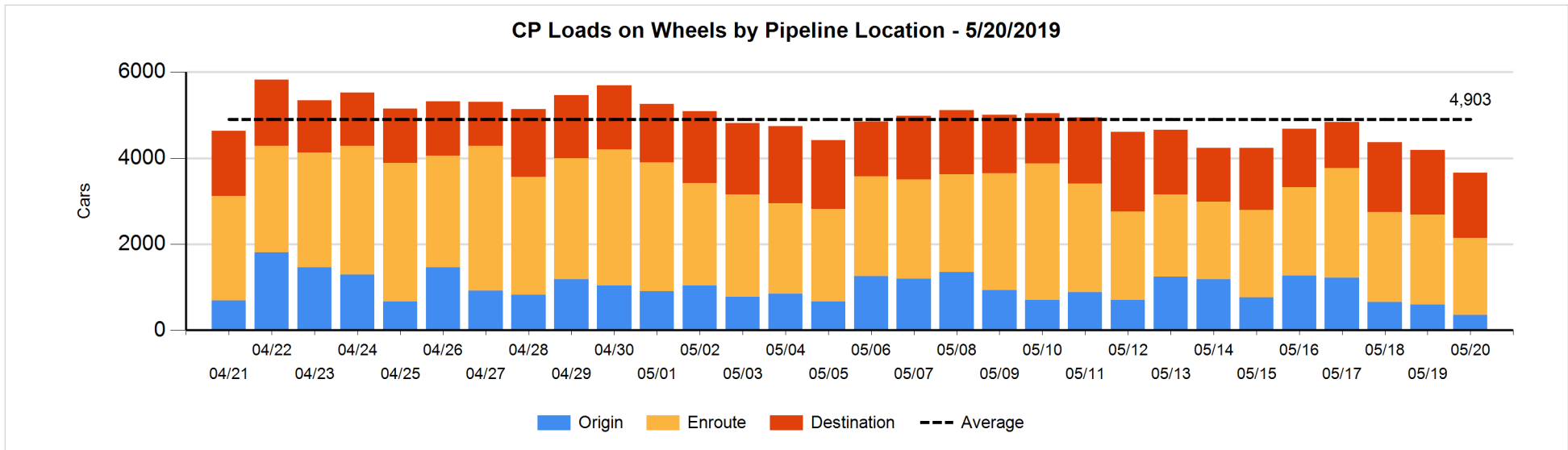
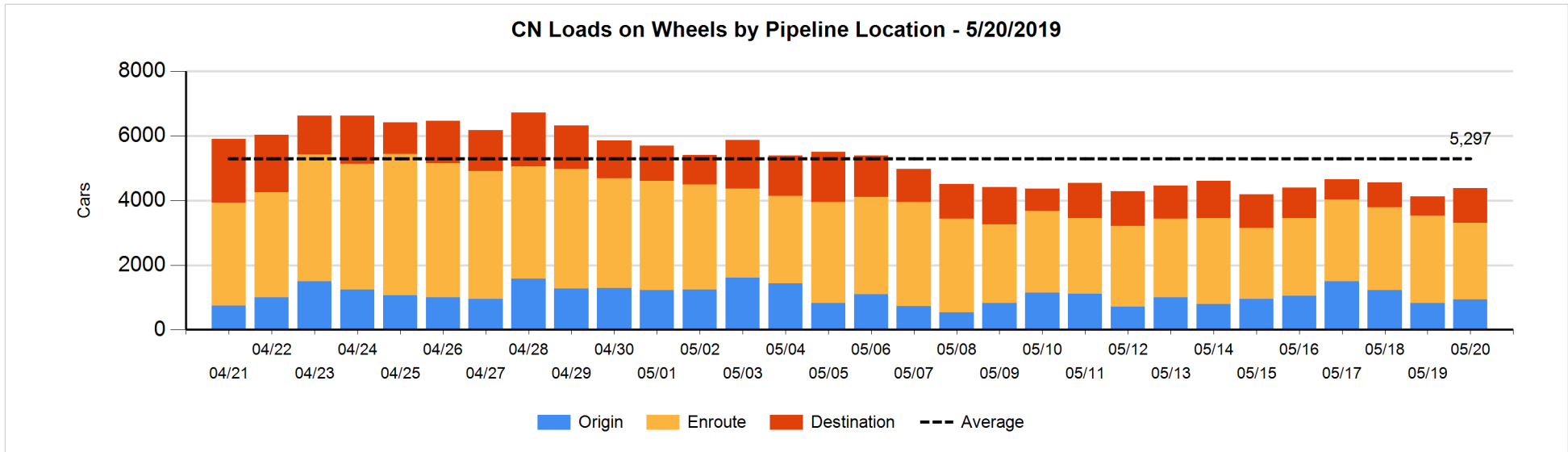


**Daily Loads on Wheels By Pipeline Location - 5/20/2019**

	E Canada	Prince Rupert	Thunder Bay	USA/MEX	Vancouver	Total
CN						
Origin	1	208		2	717	928
Enroute	311	658	103	134	1,181	2,387
Destination	214	268	224	24	340	1,070
	526	1,134	327	160	2,238	4,385
CP						
Origin	1		89		264	354
Enroute	49		236	144	1,358	1,787
Destination	37		514	4	966	1,521
	87		839	148	2,588	3,662
US Rail / Short Line						
Origin						
Enroute				56		56
Destination	5			44	20	69
	5			100	20	125

**Change in Daily Loads on Wheels By Pipeline Location - Prior 24 Hours**

	E Canada	Prince Rupert	Thunder Bay	USA/MEX	Vancouver	Total
CN						
Origin	0	-59		-1	168	108
Enroute	-12	-343	0	-26	59	-322
Destination	113	182	3	12	158	468
	101	-220	3	-15	385	254
CP						
Origin	-3		-112	-23	-106	-244
Enroute	-53		111	-15	-343	-300
Destination	34		-1	0	-21	12
	-22		-2	-38	-470	-532
US Rail / Short Line						
Origin						
Enroute				1		1
Destination	0			-11	-3	-14
	0			-10	-3	-13

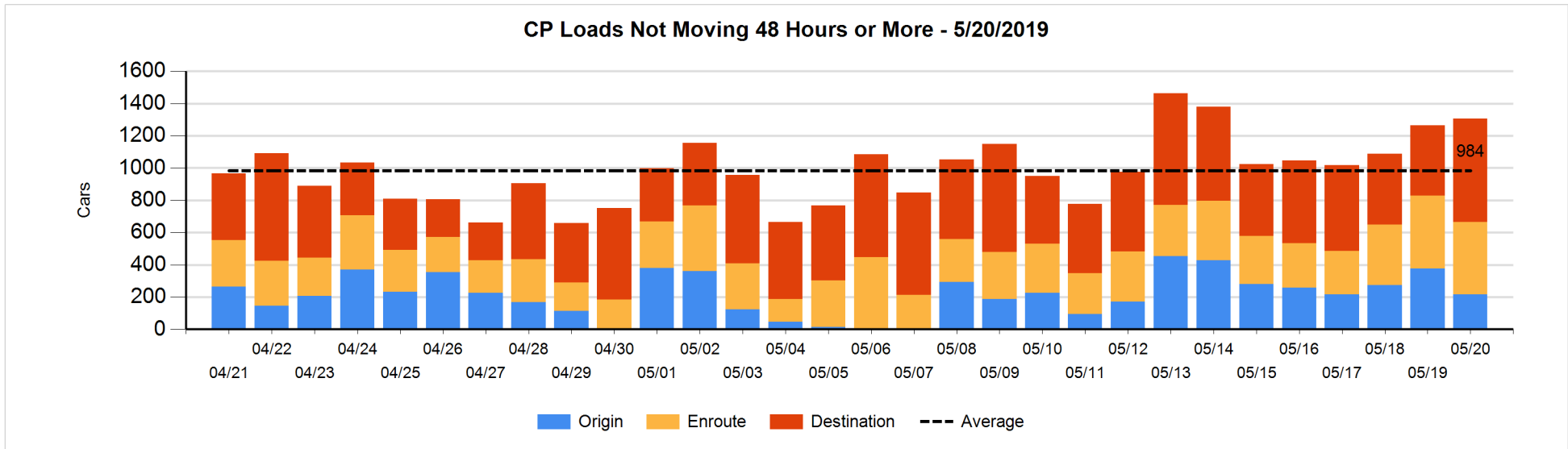
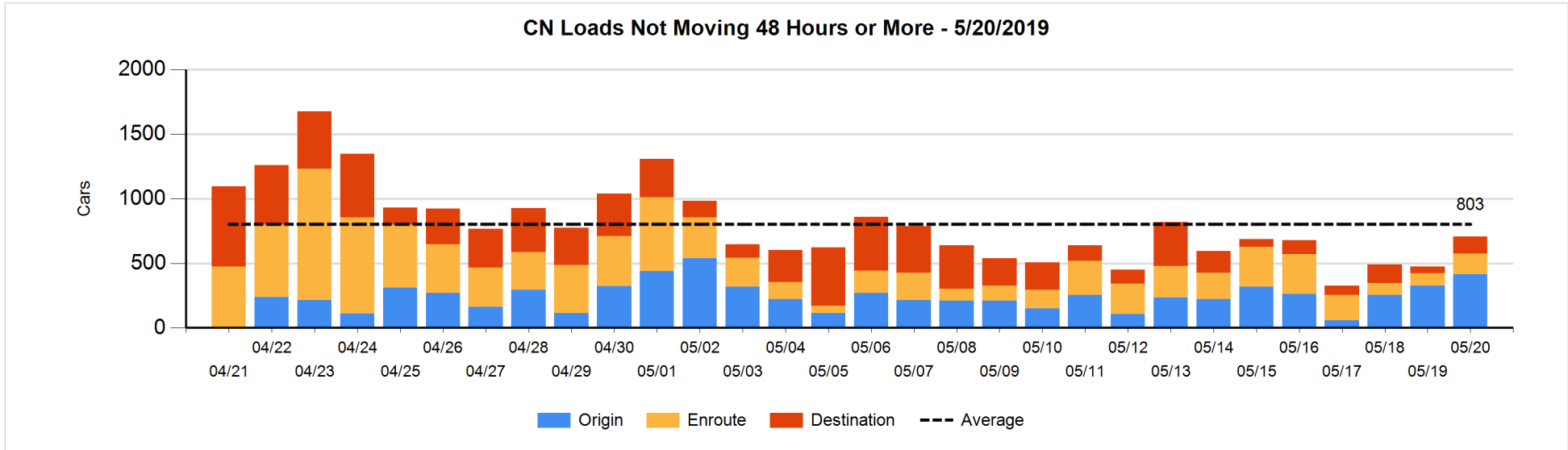


**Loads Not Moving 48 Hours or More - 5/20/2019**

	E Canada	Prince Rupert	Thunder Bay	USA/MEX	Vancouver	Total
<b>CN</b>						
Origin	1	208		2	204	415
Enroute	15	18	1	20	106	160
Destination	60	1	19	11	40	131
	76	227	20	33	350	706
<b>CP</b>						
Origin	1		89		125	215
Enroute	2		14	7	426	449
Destination	2		370	4	267	643
	5		473	11	818	1307
<b>US Rail / Short Line</b>						
Origin						
Enroute				20		20
Destination	5			21	9	35
	5			41	9	55

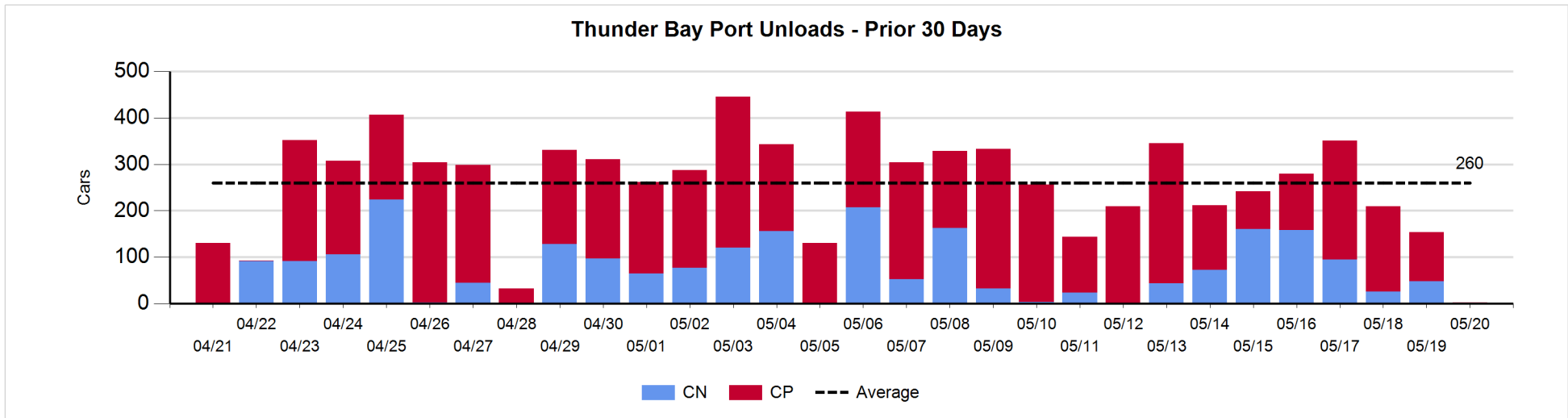
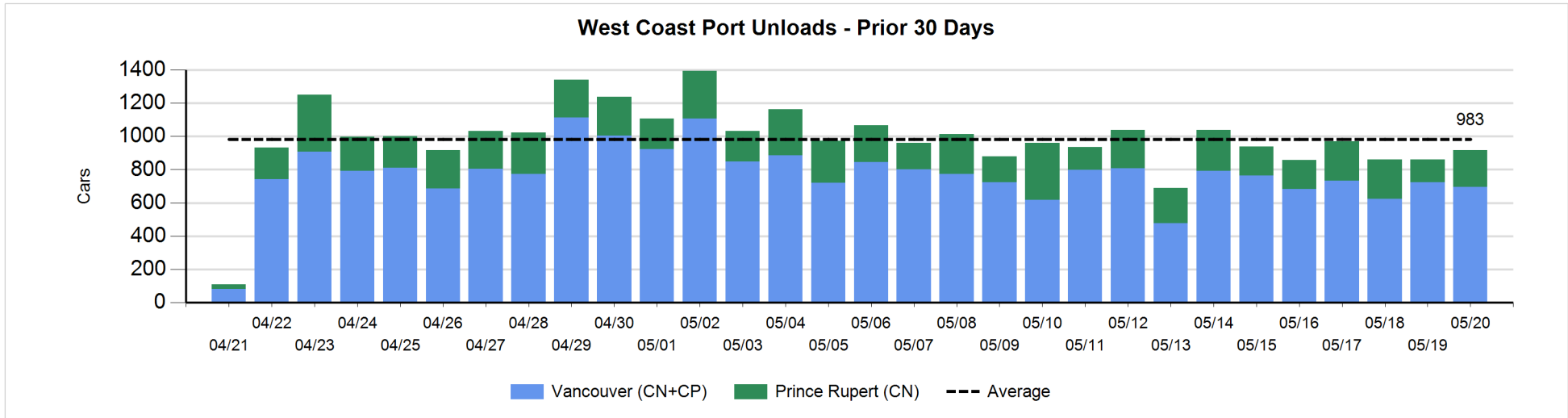
**Change in Loads Not Moving 48 Hours or More - 5/20/2019**

	E Canada	Prince Rupert	Thunder Bay	USA/MEX	Vancouver	Total
<b>CN</b>						
Origin	0	191		0	-101	90
Enroute	2	-6	0	-15	82	63
Destination	59	0	12	-1	9	79
	61	185	12	-16	-10	232
<b>CP</b>						
Origin	-3		0	-23	-134	-160
Enroute	-10		-2	1	7	-4
Destination	0		325	0	-118	207
	-13		323	-22	-245	43
<b>US Rail / Short Line</b>						
Origin						
Enroute				-3		-3
Destination	0			-20	-1	-21
	0			-23	-1	-24



Port Unloads - 5/20/2019

	Prince Rupert	Vancouver	West Coast Total	Thunder Bay	Total
CN	220	156	376		376
CP		541	541	2	543
	220	697	917	2	919





**Port Terminal Status**

**Vancouver**

Daily Activity for 5/20/2019

	Cars Arrived	Cars Received in Interchange	Cars Delivered in Interchange	Cars Placed for Unloading	Loads on Wheels at Destination As of 5/20/2019
CN	190	265	128	105	340
CP	644	128	266	506	966
SRY		1		2	20

**Port Unloads**

	05/20	05/19	Week To Date	Last Week
CN	156	316	156	1,885
CP	541	409	541	2,914
SRY	4	6	4	100

**Age Profile of Loaded Cars Waiting Placement for Unloading**

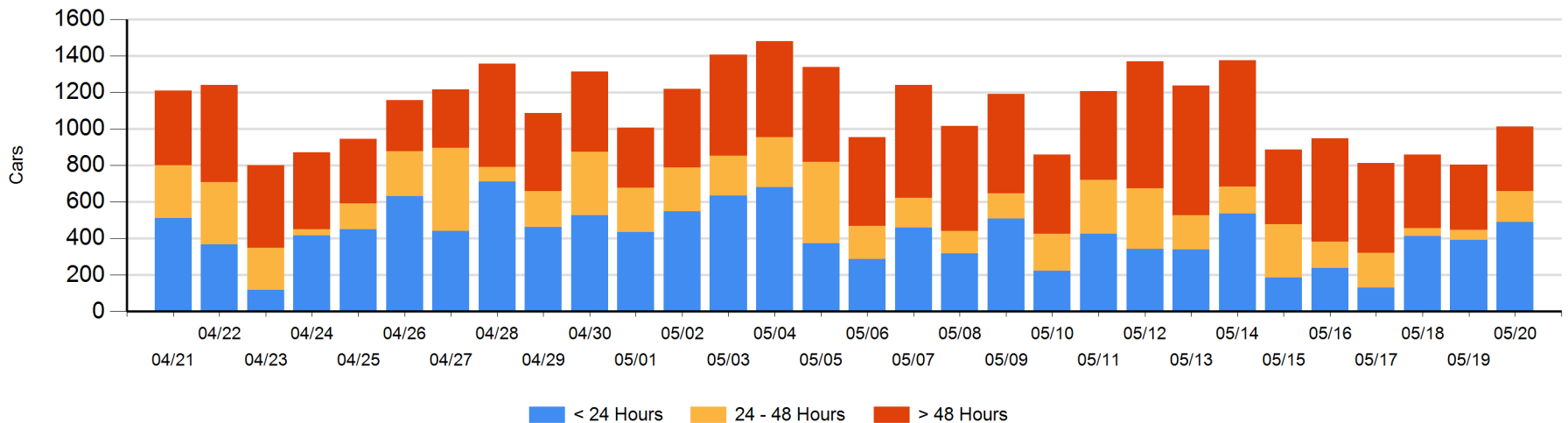
**Today**

	< 24 Hrs	24 - 48 Hrs	> 48-72 Hrs	> 72 Hrs	Total On Hand
CN	91	45	2	87	225
CP	400	124	46	219	789
SRY					0

**Change in Last 24 Hours**

	< 24 Hrs	24-48 Hrs	48 - 72 Hrs	> 72 Hrs
CN	-12	43	-1	-38
CP	111	72	6	28
SRY				

**Loaded Cars on Hand Vancouver Waiting for Placement - Last 30 Days All Railways**



**Port Terminal Status**

**Prince Rupert**

Daily Activity for 5/20/2019

	Cars Arrived	Cars Received in Interchange	Cars Delivered in Interchange	Cars Placed for Unloading	Loads on Wheels at Destination As of 5/20/2019
CN	402			402	268

**Port Unloads**

	05/20	05/19	Week To Date	Last Week
CN	220	136	220	1,415

**Age Profile of Loaded Cars Waiting Placement for Unloading**

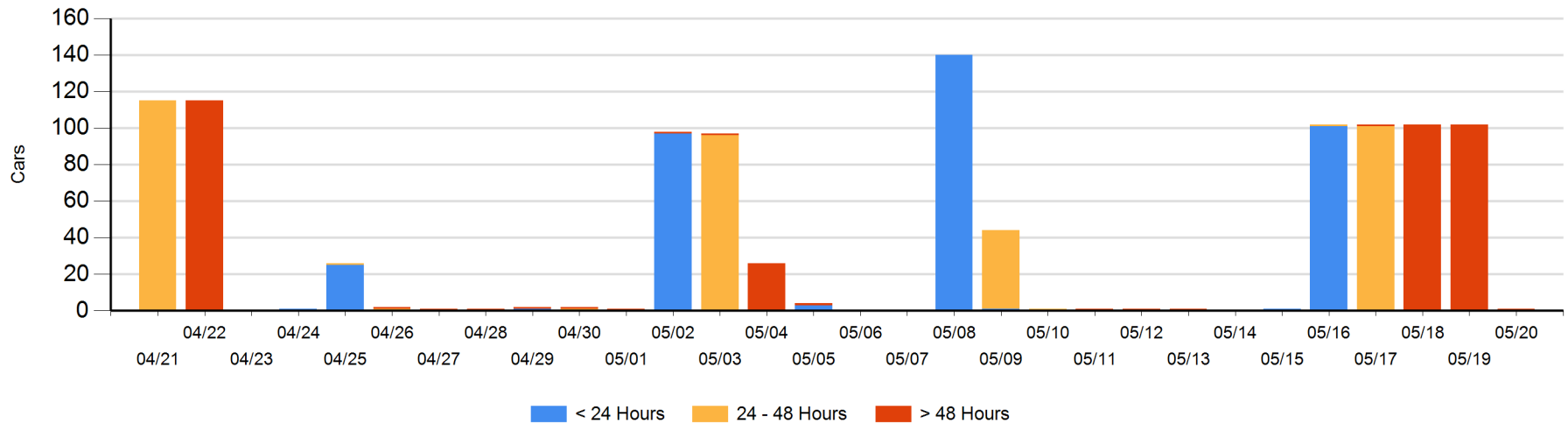
**Today**

	< 24 Hrs	24 - 48 Hrs	> 48-72 Hrs	> 72 Hrs	Total On Hand
CN				1	1

**Change in Last 24 Hours**

	< 24 Hrs	24-48 Hrs	48 - 72 Hrs	> 72 Hrs
CN				-101

Loaded Cars on Hand Prince Rupert Waiting for Placement - Last 30 Days All Railways



**Port Terminal Status**

**Thunder Bay**

Daily Activity for 5/20/2019

	Cars Arrived	Cars Received in Interchange	Cars Delivered in Interchange	Cars Placed for Unloading	Loads on Wheels at Destination As of 5/20/2019
CN	3			102	224
CP	1			123	514

**Port Unloads**

	05/20	05/19	Week To Date	Last Week
CN		48		604
CP	2	106	2	1,189

**Age Profile of Loaded Cars Waiting Placement for Unloading**

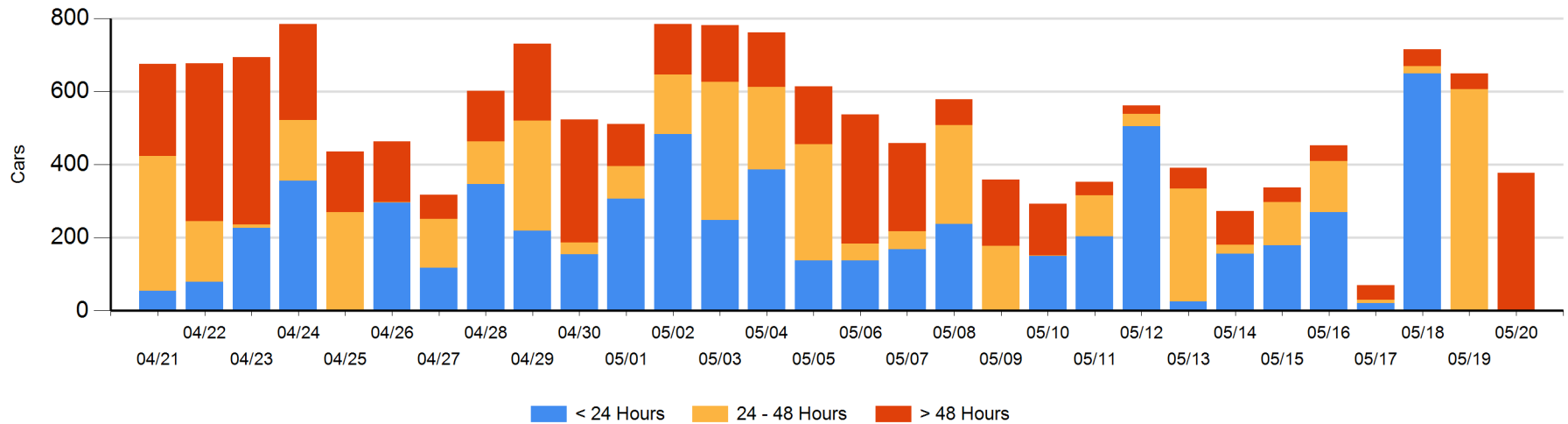
**Today**

	< 24 Hrs	24 - 48 Hrs	> 48-72 Hrs	> 72 Hrs	Total On Hand
CN			7		7
CP	1		327	42	370

**Change in Last 24 Hours**

	< 24 Hrs	24-48 Hrs	48 - 72 Hrs	> 72 Hrs
CN		-106	7	
CP	1	-501	327	0

Loaded Cars on Hand Thunder Bay Waiting for Placement - Last 30 Days All Railways



## Measurement Definitions

Loads on Wheels	<p>Count of loaded rail cars including all rail cars that have been released loaded at origin and have not been reported by the railway as unloaded at destination.</p> <p>Counts include all rail cars (hopper cars and boxcars) moving within a pipeline.</p>
Loads Not Moving	<p>Loaded rail cars for which the railways have not reported a movement event for 48 hours or more whether the rail car is at origin, enroute or at destination.</p>
Port Unloads	<p>Count of rail cars reported by railways as unloaded at the western port destinations of Vancouver, Prince Rupert and Thunder Bay.</p> <p>Unload counts include all rail cars (hopper cars and boxcars) unloaded by all receivers including major port terminals, transloaders and other receivers.</p>
Cars Arrived	<p>Count of rail cars reported as arrived at the destination railway terminal.</p>
Cars Received in Interchange	<p>Count of rail cars received in interchange by each railway within a destination railway terminal. Interchange activity is tracked for the Vancouver and Thunder Bay pipelines as applicable.</p>
Cars Delivered in Interchange	<p>Count of rail cars delivered in interchange by each railway within a destination railway terminal. Interchange activity is tracked for the Vancouver and Thunder Bay pipelines as applicable.</p>
Cars Placed for Unloading	<p>Count of rail cars reported by the railways as placed loaded at the receiver's facility for unloading.</p>
Loads on Wheels at Destination	<p>Count of rail cars that remain under load within the destination railway terminal including rail cars that have been reported as placed for unloading but not yet reported as unloaded.</p>
Waiting Placement for Unloading	<p>Count of rail cars that have been reported as arrived at the destination railway terminal but not reported as placed for unloading by the railway.</p> <p>For the Ports of Vancouver, Prince Rupert and Thunder Bay the count of rail cars waiting placement for unloading is categorized by age – i.e. the elapsed time from arrival at destination to the current report date.</p>