

## SPEED READ

- Loads on wheels decreased overnight, reflecting a decline in both CN and CP volumes. On a net basis, volumes declined due to lower traffic in the Vancouver, Prince Rupert and E. Canada corridors offset by higher traffic in the Thunder Bay and USA/MEX corridors.
- Network fluidity improved overnight, led by a decline in idle car counts on both CN and CP by 35% (-274) and 34% (-332), respectively. The total count of cars for 4+ days on both railways fell 10% (-76) overnight and have now decreased for the third consecutive day - now at 704 cars.
- Three days in Week 43 unloads now behind prior week's performance by more than 300 unloads, reflecting reduced unloads at Thunder Bay offset by improved week over week performance at Vancouver and Prince Rupert.

---

## Loads on Wheels

- Loads on wheels declined for the fifth consecutive day, down 7% (-574) overnight, due to reduced volumes on both CN and CP - combined total at 7,157, the lowest seen in the last 30 days, and 29% below the trailing 30-day average.
- On a net basis, the decline in loads on wheels reflects lower traffic in the Vancouver, Prince Rupert and E. Canada corridors offset by higher traffic in the Thunder Bay and USA/MEX corridors.
- CN volumes fell 5% (-173) overnight, with reduced volumes in the Vancouver, Prince Rupert and E. Canada corridors offset by higher traffic in the Thunder Bay and USA/MEX corridors. System wide CN loads on wheels presently at 3,639, the lowest seen in the last 30 days, and 29% below the trailing 30-day average.
- CP volumes decreased significantly by 11% (-417) overnight, driven by a decline in volumes across all corridors - Vancouver, Thunder Bay, USA/MEX and E. Canada. CP system wide loads on wheels currently at 3,367, the lowest seen in the last 30 days, and 30% below the trailing 30-day average.
- Vancouver currently at 4,082, the lowest seen in the last 30 days, declined 9% (-421) overnight and have now decreased for the fifth consecutive day, now 33% below the trailing 30-day average.
- The Prince Rupert pipeline presently at 904, the lowest seen in the last 30 days, fell significantly by 12% (-129) overnight and have now decreased for the fifth consecutive day, and 39% below the trailing 30-day average.
- Thunder Bay volumes increased 2% (+25) overnight - presently at 1,179 and 21% below the trailing 30-day average, with 74% of traffic moving on CP.

## Hopper Car Rationing

- CN rationed 104 hopper cars in week 41.

## Loads Not Moving

- **The count of cars not moving for 48+ hours fell 34% (-606) overnight, reflecting lower counts on both CN and CP. Idle car counts presently at 1,154, the lowest seen in the last 30 days, and 34% below the trailing 30-day average.**
- CN
  - **The count of idle cars for 48+ hours decreased 35% (-274) overnight - currently at 506 cars.**
  - The number of cars idle for 4+ days decreased 7% (-19) overnight - presently at 272 cars.
  - The count of cars not moving for 7+ days declined 20% (-10) overnight - currently at 41 cars.
  - Vancouver represents 48% of all idle cars.
  - In total 63% of all idle cars are dwelling at origin locations.
- CP
  - **CP idle car counts for 48+ hours decreased 34% (-332) overnight - currently at 648 cars, the lowest seen in the last 30 days.**

- The number of cars idle for 4+ days declined 12% (-57) overnight and have now decreased for the third consecutive day - currently at 432 cars.
- The number of cars idle for 7+ days decreased 45% (-120) overnight - now at 149 cars.
- Vancouver accounts for 57% of all idle cars.
- In total 3% of all idle cars are dwelling at origin locations.

### **Port Performance**

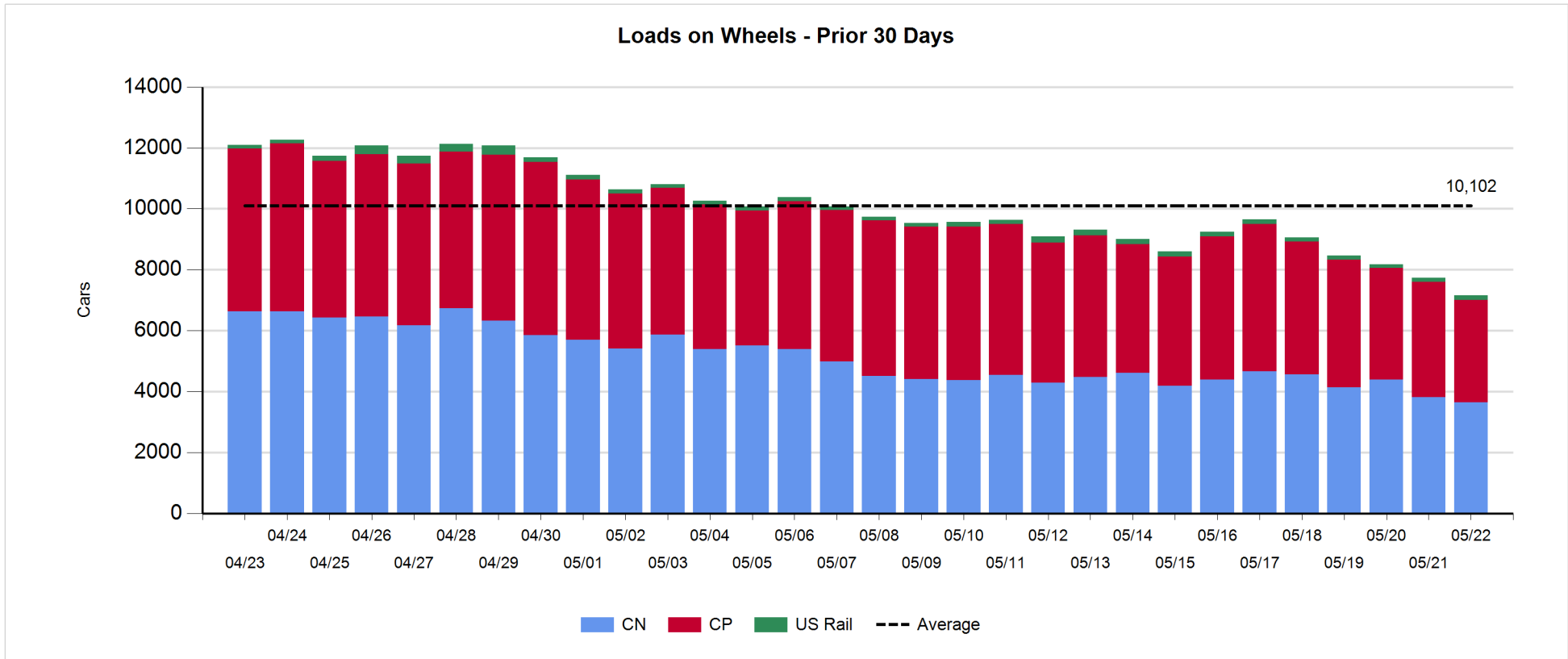
- CN and CP reported a total of 1,171 cars unloaded at the three major ports, now 8% below the trailing 30-day average. Three days in Week 43 unloads now behind last week's pace by more than 300 unloads, reflecting reduced unloads at Thunder Bay offset by higher unloads at Vancouver and Prince Rupert.
- Vancouver
  - 752 unloads reported by CN and CP at the Port of Vancouver; CN - 245 and CP - 507. Three days in Week 43 unloads are tracking ahead of last week's performance by 100 unloads.
  - There are more than 1,050 cars on site at Vancouver with 800 cars arriving at the port in the last 24 hours.
  - CN and CP have about 1,050 cars in British Columbia en route to Vancouver, with 700 cars at Kamloops and west, and 80% of traffic moving on CP.
- Prince Rupert
  - Prince Rupert reported 230 unloads, now ahead of last week's unloads after three days by 25 unloads.
  - Loads on wheels now below 1,000 cars - presently at 904 cars.
  - There are 350 cars west of Jasper en route to Prince Rupert.
  - There are 50 cars on site at Prince Rupert with more than 100 cars arriving at the port in the last 24 hours.
- Thunder Bay
  - 189 unloads were reported at Thunder Bay yesterday. Three days in Week 43 unloads are tracking behind last week's pace by about 450 unloads.
  - There are about 700 cars on site at Thunder Bay with more than 250 cars arriving at the port in the prior 24 hours.
  - There are 150 cars en route to Thunder Bay from Winnipeg and east.

**Daily Loads on Wheels - 5/22/2019**

	E Canada	Prince Rupert	Thunder Bay	USA/MEX	Vancouver	Total
CN	436	904	303	160	1,836	3,639
CP	45		876	239	2,207	3,367
Short Line	1				39	40
US Rail				111		111
	482	904	1,179	510	4,082	7,157

**Change in Loads on Wheels - Prior 24 Hours**

	E Canada	Prince Rupert	Thunder Bay	USA/MEX	Vancouver	Total
CN	-7	-129	77	39	-153	-173
CP	-44		-52	-30	-291	-417
Short Line	0				23	23
US Rail				-7		-7
	-51	-129	25	2	-421	-574

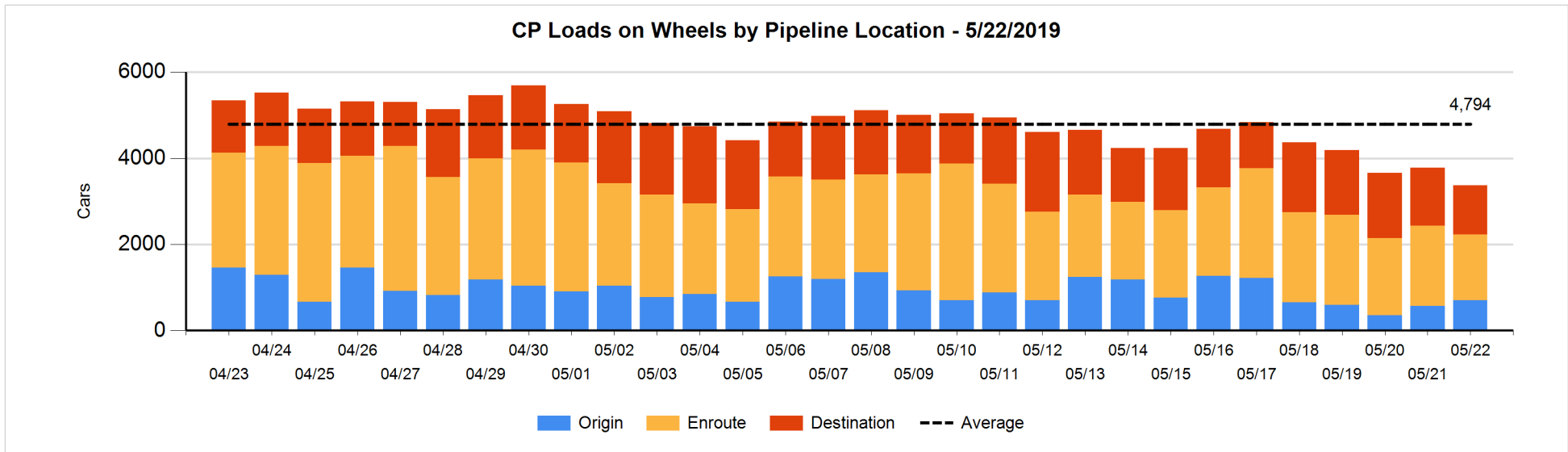
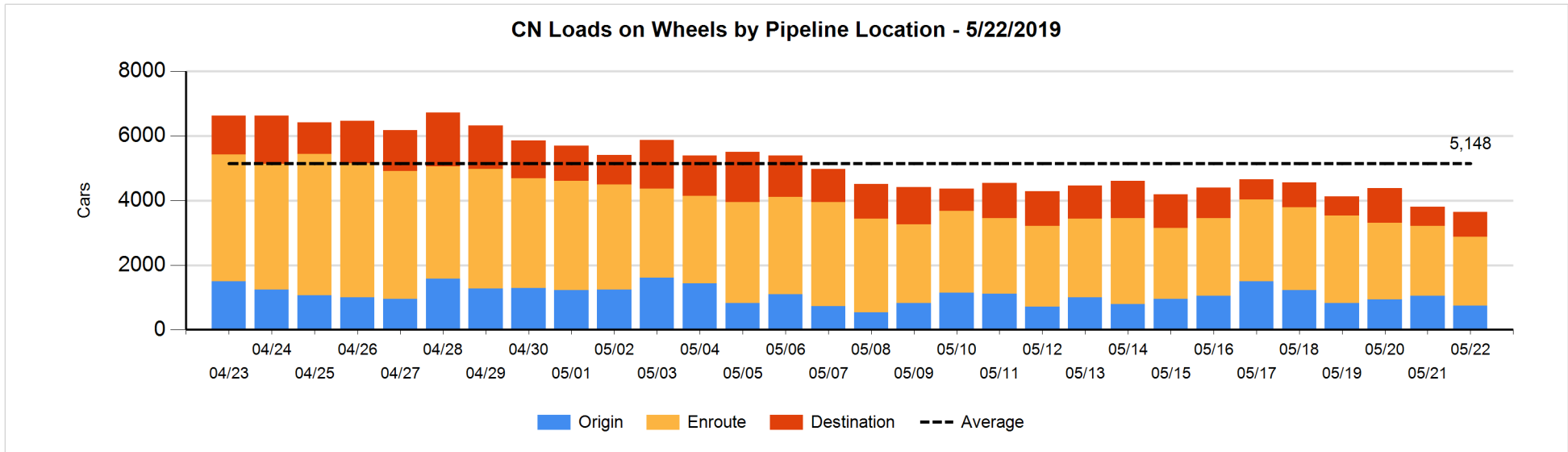


**Daily Loads on Wheels By Pipeline Location - 5/22/2019**

	E Canada	Prince Rupert	Thunder Bay	USA/MEX	Vancouver	Total
CN						
Origin	34	206	104	57	339	740
Enroute	328	640	54	75	1,037	2,134
Destination	74	58	145	28	460	765
	436	904	303	160	1,836	3,639
CP						
Origin	2		222	68	404	696
Enroute	28		117	156	1,234	1,535
Destination	15		537	15	569	1,136
	45		876	239	2,207	3,367
US Rail / Short Line						
Origin						
Enroute				60		60
Destination	1			51	39	91
	1			111	39	151

**Change in Daily Loads on Wheels By Pipeline Location - Prior 24 Hours**

	E Canada	Prince Rupert	Thunder Bay	USA/MEX	Vancouver	Total
CN						
Origin	28	-106	104	51	-386	-309
Enroute	-21	81	0	-30	-63	-33
Destination	-14	-104	-27	18	296	169
	-7	-129	77	39	-153	-173
CP						
Origin	1		57	13	57	128
Enroute	-10		-208	-54	-54	-326
Destination	-35		99	11	-294	-219
	-44		-52	-30	-291	-417
US Rail / Short Line						
Origin						
Enroute				10		10
Destination	0			-17	23	6
	0			-7	23	16

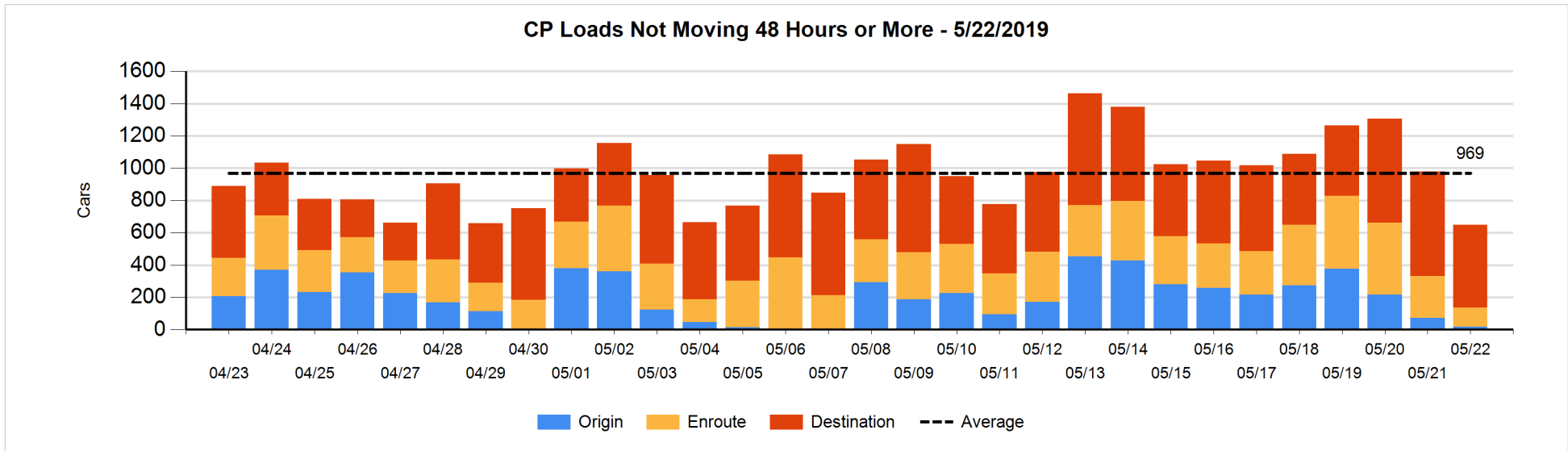
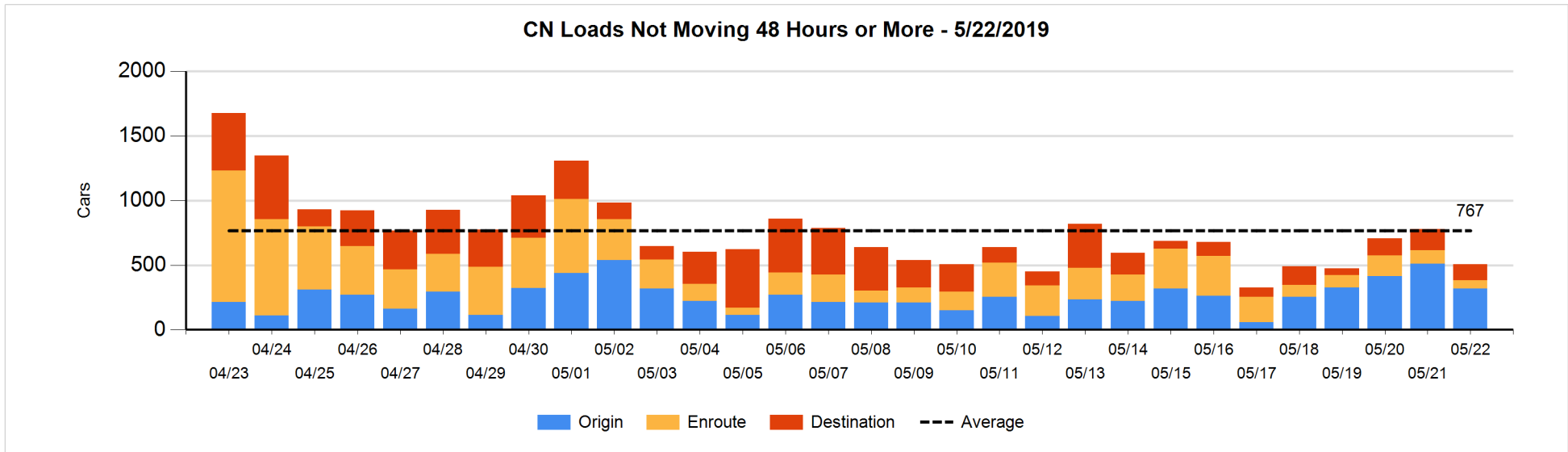


**Loads Not Moving 48 Hours or More - 5/22/2019**

	E Canada	Prince Rupert	Thunder Bay	USA/MEX	Vancouver	Total
<b>CN</b>						
Origin	1	103			216	320
Enroute	12	18	1	19	13	63
Destination	17	1	89		16	123
	30	122	90	19	245	506
<b>CP</b>						
Origin	1				17	18
Enroute			8	16	93	117
Destination			248	4	261	513
	1		256	20	371	648
<b>US Rail / Short Line</b>						
Origin						
Enroute				20		20
Destination	1			20	4	25
	1			40	4	45

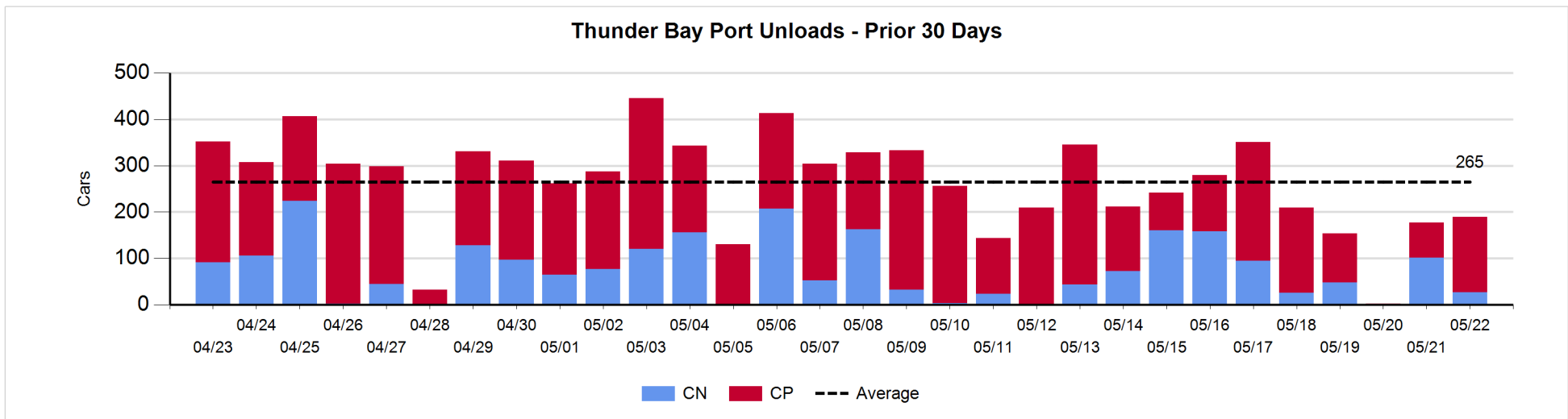
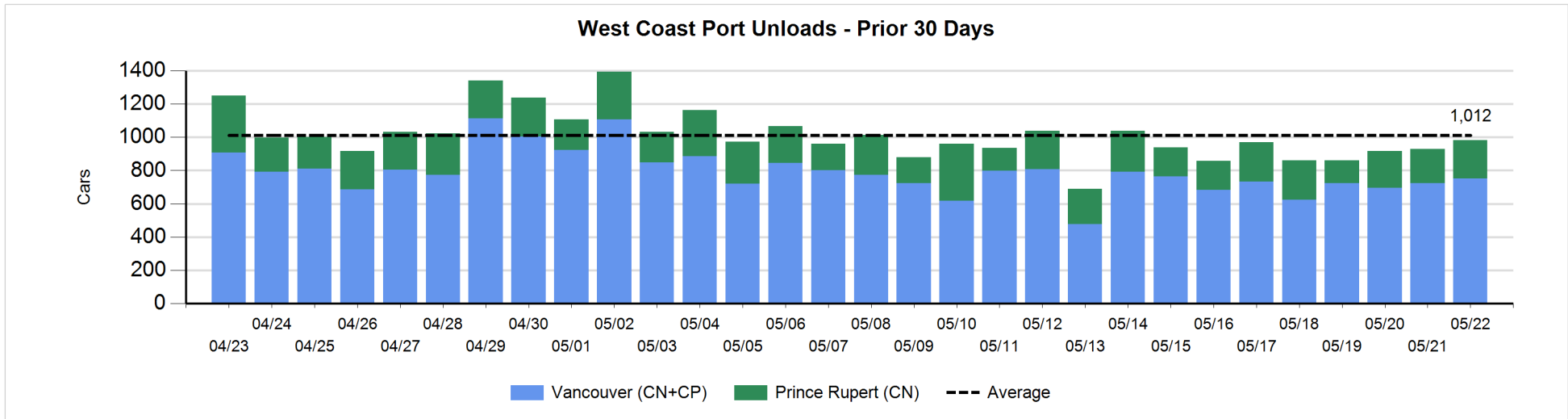
**Change in Loads Not Moving 48 Hours or More - 5/22/2019**

	E Canada	Prince Rupert	Thunder Bay	USA/MEX	Vancouver	Total
<b>CN</b>						
Origin	0	-103		-2	-86	-191
Enroute	-16	-25	0	-1	0	-42
Destination	8	0	-33	-1	-15	-41
	-8	-128	-33	-4	-101	-274
<b>CP</b>						
Origin	0				-53	-53
Enroute			0	9	-151	-142
Destination			-122	0	-15	-137
	0		-122	9	-219	-332
<b>US Rail / Short Line</b>						
Origin						
Enroute				2		2
Destination	0			3	1	4
	0			5	1	6



Port Unloads - 5/22/2019

	Prince Rupert	Vancouver	West Coast Total	Thunder Bay	Total
CN	230	245	475	27	502
CP		507	507	162	669
	230	752	982	189	1,171





## Port Terminal Status

### Vancouver

Daily Activity for 5/22/2019

	Cars Arrived	Cars Received in Interchange	Cars Delivered in Interchange	Cars Placed for Unloading	Loads on Wheels at Destination As of 5/22/2019
CN	466	114	149	322	460
CP	323	149	123	515	569
SRY	1	9		11	39

### Port Unloads

	05/22	05/21	Week To Date	Last Week
CN	245	230	631	1,885
CP	507	494	1,542	2,914
SRY	12	4	20	100

## Age Profile of Loaded Cars Waiting Placement for Unloading

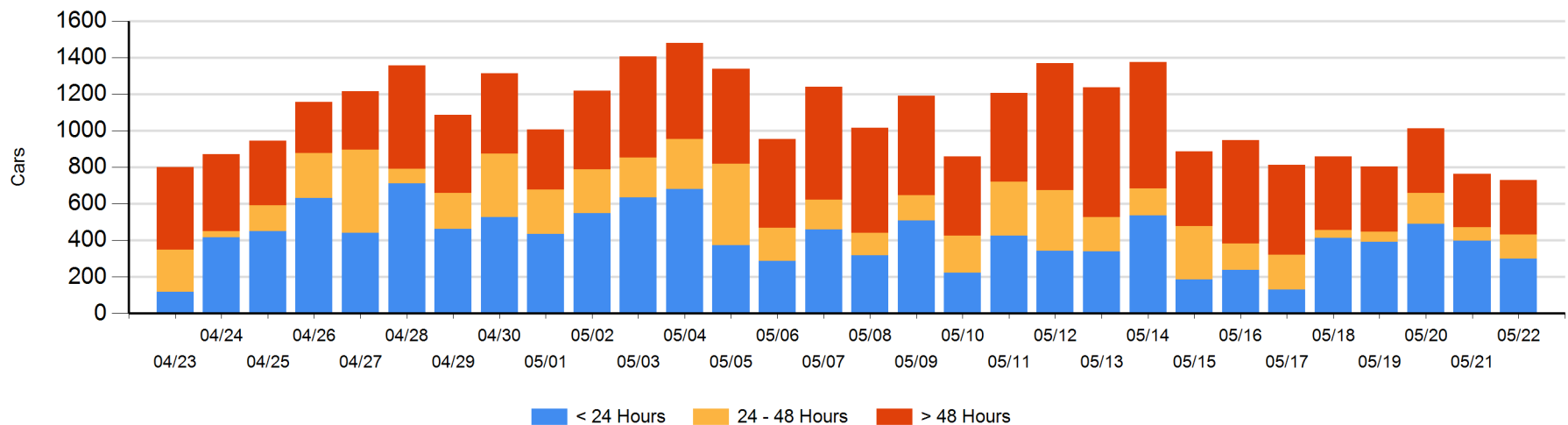
### Today

	< 24 Hrs	24 - 48 Hrs	> 48-72 Hrs	> 72 Hrs	Total On Hand
CN	267	40		80	387
CP	32	93	72	145	342
SRY					0

### Change in Last 24 Hours

	< 24 Hrs	24-48 Hrs	48 - 72 Hrs	> 72 Hrs
CN	238	40	-23	6
CP	-336	19	-27	47
SRY				

Loaded Cars on Hand Vancouver Waiting for Placement - Last 30 Days All Railways



**Port Terminal Status**

**Prince Rupert**

Daily Activity for 5/22/2019

	Cars Arrived	Cars Received in Interchange	Cars Delivered in Interchange	Cars Placed for Unloading	Loads on Wheels at Destination As of 5/22/2019
CN	125			125	58

**Port Unloads**

	05/22	05/21	Week To Date	Last Week
CN	230	206	656	1,415

**Age Profile of Loaded Cars Waiting Placement for Unloading**

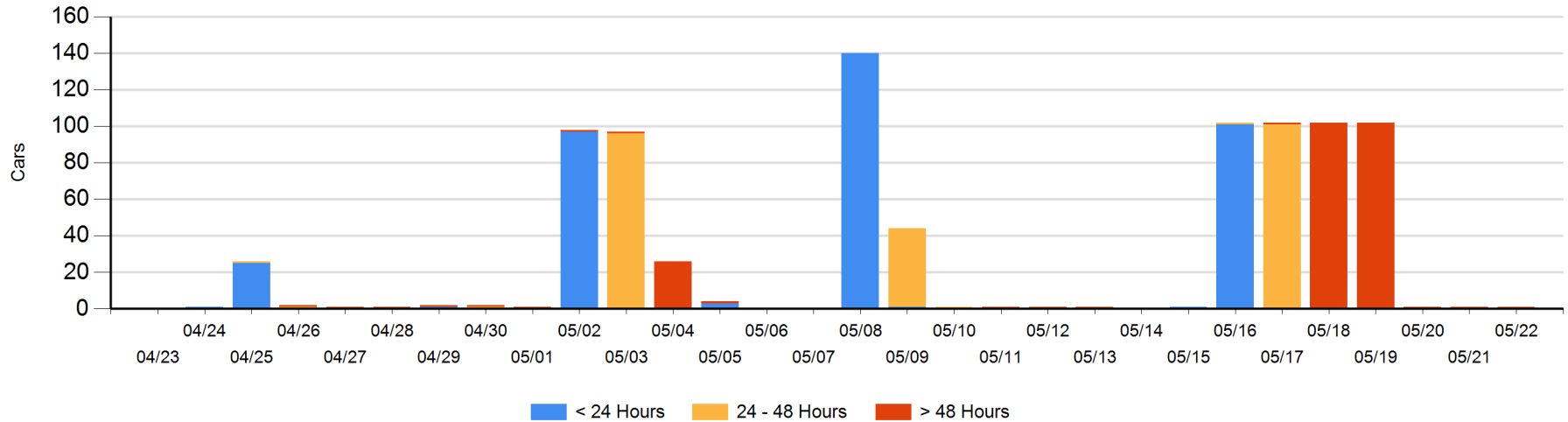
**Today**

	< 24 Hrs	24 - 48 Hrs	> 48-72 Hrs	> 72 Hrs	Total On Hand
CN				1	1

**Change in Last 24 Hours**

	< 24 Hrs	24-48 Hrs	48 - 72 Hrs	> 72 Hrs
CN				0

Loaded Cars on Hand Prince Rupert Waiting for Placement - Last 30 Days All Railways



**Port Terminal Status**

**Thunder Bay**

Daily Activity for 5/22/2019

	Cars Arrived	Cars Received in Interchange	Cars Delivered in Interchange	Cars Placed for Unloading	Loads on Wheels at Destination As of 5/22/2019
CN				56	145
CP	261			246	537

**Port Unloads**

	05/22	05/21	Week To Date	Last Week
CN	27	101	128	604
CP	162	76	240	1,189

**Age Profile of Loaded Cars Waiting Placement for Unloading**

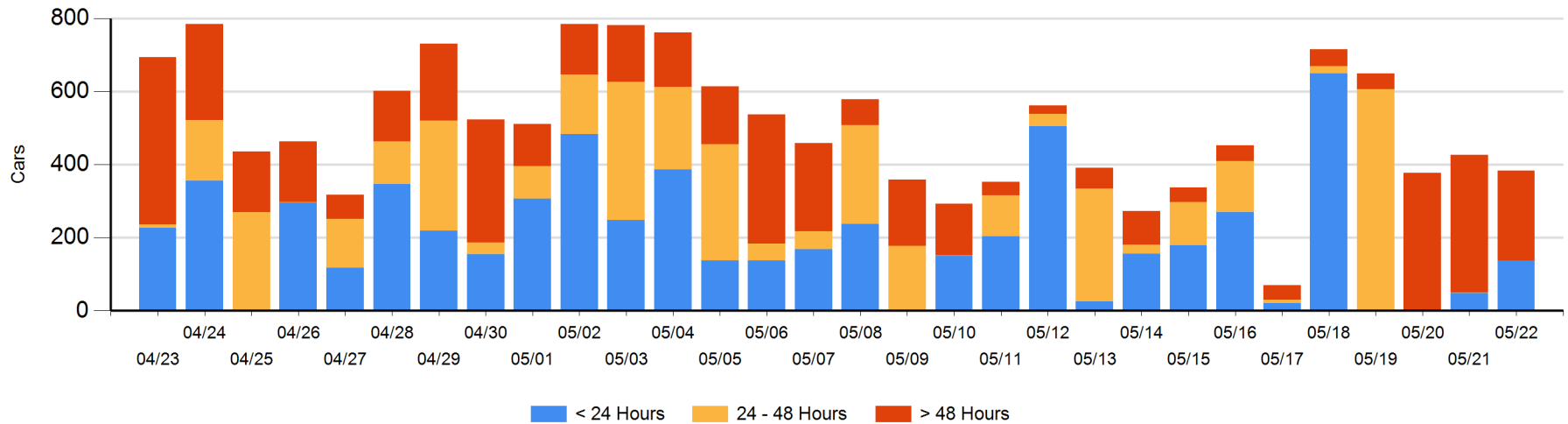
**Today**

	< 24 Hrs	24 - 48 Hrs	> 48-72 Hrs	> 72 Hrs	Total On Hand
CN					0
CP	138		1	244	383

**Change in Last 24 Hours**

	< 24 Hrs	24-48 Hrs	48 - 72 Hrs	> 72 Hrs
CN	-49			-7
CP	138	-1	1	-125

Loaded Cars on Hand Thunder Bay Waiting for Placement - Last 30 Days All Railways



## Measurement Definitions

Loads on Wheels	<p>Count of loaded rail cars including all rail cars that have been released loaded at origin and have not been reported by the railway as unloaded at destination.</p> <p>Counts include all rail cars (hopper cars and boxcars) moving within a pipeline.</p>
Loads Not Moving	<p>Loaded rail cars for which the railways have not reported a movement event for 48 hours or more whether the rail car is at origin, enroute or at destination.</p>
Port Unloads	<p>Count of rail cars reported by railways as unloaded at the western port destinations of Vancouver, Prince Rupert and Thunder Bay.</p> <p>Unload counts include all rail cars (hopper cars and boxcars) unloaded by all receivers including major port terminals, transloaders and other receivers.</p>
Cars Arrived	<p>Count of rail cars reported as arrived at the destination railway terminal.</p>
Cars Received in Interchange	<p>Count of rail cars received in interchange by each railway within a destination railway terminal. Interchange activity is tracked for the Vancouver and Thunder Bay pipelines as applicable.</p>
Cars Delivered in Interchange	<p>Count of rail cars delivered in interchange by each railway within a destination railway terminal. Interchange activity is tracked for the Vancouver and Thunder Bay pipelines as applicable.</p>
Cars Placed for Unloading	<p>Count of rail cars reported by the railways as placed loaded at the receiver's facility for unloading.</p>
Loads on Wheels at Destination	<p>Count of rail cars that remain under load within the destination railway terminal including rail cars that have been reported as placed for unloading but not yet reported as unloaded.</p>
Waiting Placement for Unloading	<p>Count of rail cars that have been reported as arrived at the destination railway terminal but not reported as placed for unloading by the railway.</p> <p>For the Ports of Vancouver, Prince Rupert and Thunder Bay the count of rail cars waiting placement for unloading is categorized by age – i.e. the elapsed time from arrival at destination to the current report date.</p>