

SPEED READ

- Loads on wheels decreased overnight, marking higher CP volumes offset by a decline in CN volumes. On a net basis, volumes declined due to reduced traffic in the Thunder Bay, Prince Rupert and E. Canada corridors offset by higher traffic in the USA/MEX and Vancouver corridors.
- Network fluidity improved overnight, led by a rise in idle car counts on CN by 5% (+49) offset by a decline in idle car counts on CP by 16% (-267). The total count of cars for 4+ days on both railways gained 44% (+329) overnight - now at 1,081 cars.
- Four days in Week 14 unloads now behind prior week's performance by more than 150 unloads, marking reduced unloads at Vancouver offset by improved week over week performance at Thunder Bay and Prince Rupert.

Loads on Wheels

- Loads on wheels declined 3% (-375) overnight, due to higher traffic on CP offset by reduced volumes on CN - combined total at 11,704 and 3% above the trailing 30-day average.
- On a net basis, the decline in loads on wheels reflects reduced traffic in the Thunder Bay, Prince Rupert and E. Canada corridors offset by higher traffic in the USA/MEX and Vancouver corridors.
- CN volumes declined 7% (-422) overnight, with lower volumes across all corridors - Vancouver, Thunder Bay, Prince Rupert, USA/MEX and E. Canada. System wide CN loads on wheels currently at 5,482 and 1% below the trailing 30-day average.
- CP volumes gained marginally by 1% (+30) overnight, driven by an increase in traffic across all corridors other than Thunder Bay. CP system wide loads on wheels currently at 6,008 and 9% above the trailing 30-day average.
- Vancouver now at 7,048, rose slightly by 1% (+39) overnight, now 4% above the trailing 30-day average.
- The Prince Rupert pipeline currently at 1,407, declined 9% (-142) overnight, and 3% below the trailing 30 day-average.
- Thunder Bay volumes declined significantly by 14% (-285) overnight - currently at 1,692 and 1% above the trailing 30-day average, with 72% of traffic moving on CP.

Hopper Car Rationing

- No hopper car rationing was reported for either CN or CP in week 12.

Loads Not Moving

- **The count of cars not moving for 48+ hours fell 9% (-218) overnight and have now decreased for the third consecutive day, marking higher counts on CN offset by lower counts on CP. Idle car counts currently at 2,319 and 7% above the trailing 30-day average.**
- CN
 - **The count of idle cars for 48+ hours rose 5% (+49) overnight - presently at 955 cars.**
 - The number of cars idle for 4+ days gained 24% (+91) overnight - currently at 471 cars.
 - The count of cars not moving for 7+ days fell 13% (-17) overnight - presently at 115 cars.
 - Vancouver represents 67% of all idle cars.
 - In total 14% of all idle cars are dwelling at origin locations.
- CP
 - **CP idle car counts for 48+ hours declined 16% (-267) overnight - now at 1,364 cars.**
 - The number of cars idle for 4+ days increased significantly by 64% (+238) overnight - currently at 610 cars.

- The number of cars idle for 7+ days remained unchanged (0) overnight - currently at 136 cars.
- Vancouver accounts for 56% of all idle cars.
- In total 40% of all idle cars are dwelling at origin locations.

Port Performance

- CN and CP reported a total of 1,356 cars unloaded at the three major ports, now 8% above the trailing 30-day average. Four days in Week 14 unloads now behind last week's pace by more than 150 unloads, marking lower unloads at Vancouver offset by higher unloads at Thunder Bay and Prince Rupert.
- Vancouver
 - 745 unloads reported by CN and CP at the Port of Vancouver; CN - 374 and CP - 371. Four days in Week 14 unloads are tracking behind last week's performance by more than 500 unloads.
 - There are 1,750 cars on site at Vancouver with more than 650 cars arriving at the port in the last 24 hours.
 - CN and CP have more than 1,900 cars in British Columbia en route to Vancouver, with around 1,000 cars at Kamloops and west, and 58% of traffic moving on CP.
- Prince Rupert
 - Prince Rupert reported 309 unloads, the highest seen in the last 30 days, now ahead of last week's unloads after four days by more than 150 unloads.
 - Loads on wheels now above 1,000 cars - currently at 1,407 cars.
 - There are 650 cars west of Jasper en route to Prince Rupert.
 - There are more than 100 cars on site at Prince Rupert with 300 cars arriving at the port in the last 24 hours. Given the structure of the pipeline, there appears to be sufficient cars available to support unloads in the next few days.
- Thunder Bay
 - 302 unloads were reported at Thunder Bay yesterday. Four days in Week 14 unloads are tracking ahead of last week's pace by 200 unloads.
 - There are more than 850 cars on site at Thunder Bay with 500 cars arriving at the port in the prior 24 hours.
 - There are 200 cars en route to Thunder Bay from Winnipeg and east. Cars on hand and those en route should support unloads for the balance of the week.

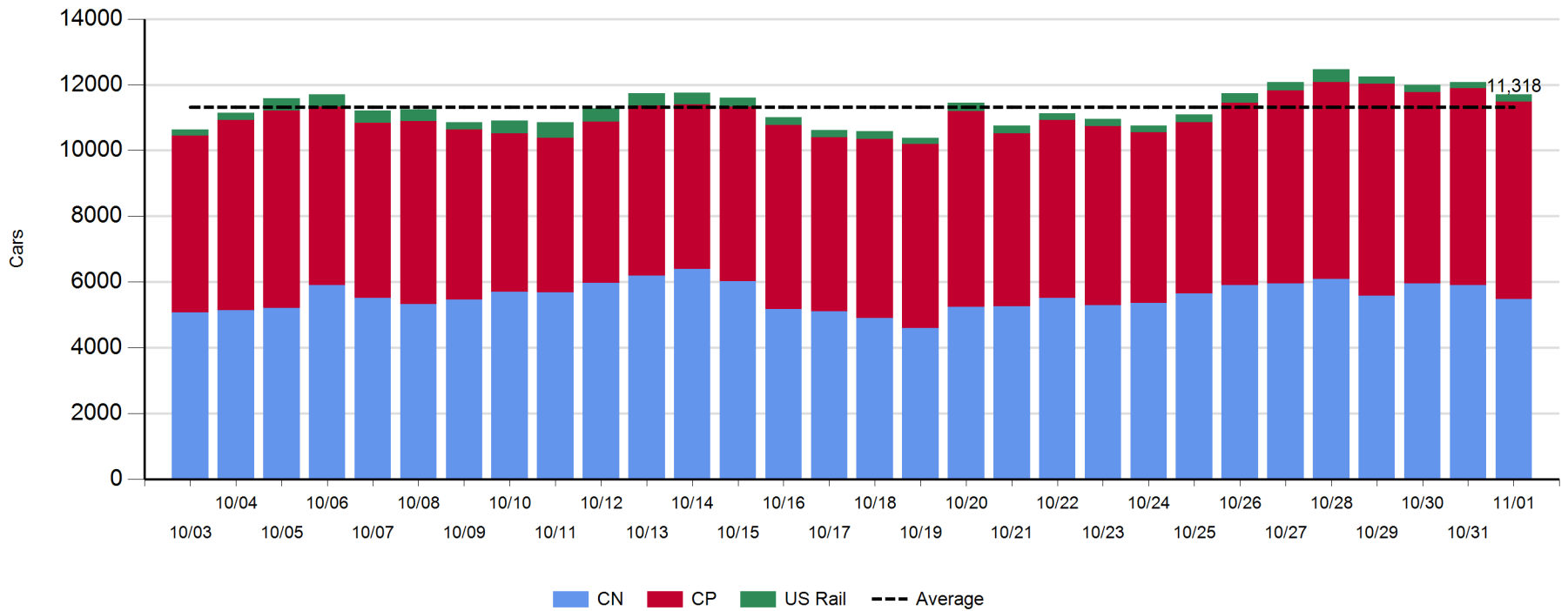
Daily Loads on Wheels - 11/1/2018

| | E Canada | Prince Rupert | Thunder Bay | USA/MEX | Vancouver | Total |
|------------|----------|---------------|-------------|---------|-----------|--------|
| CN | 360 | 1,407 | 478 | 216 | 3,021 | 5,482 |
| CP | 159 | | 1,214 | 630 | 4,005 | 6,008 |
| Short Line | 28 | | | | 22 | 50 |
| US Rail | | | | 164 | | 164 |
| | 547 | 1,407 | 1,692 | 1,010 | 7,048 | 11,704 |

Change in Loads on Wheels - Prior 24 Hours

| | E Canada | Prince Rupert | Thunder Bay | USA/MEX | Vancouver | Total |
|------------|----------|---------------|-------------|---------|-----------|-------|
| CN | -27 | -142 | -29 | -8 | -216 | -422 |
| CP | 2 | | -256 | 36 | 248 | 30 |
| Short Line | -3 | | | | 7 | 4 |
| US Rail | | | | 13 | | 13 |
| | -28 | -142 | -285 | 41 | 39 | -375 |

Loads on Wheels - Prior 30 Days

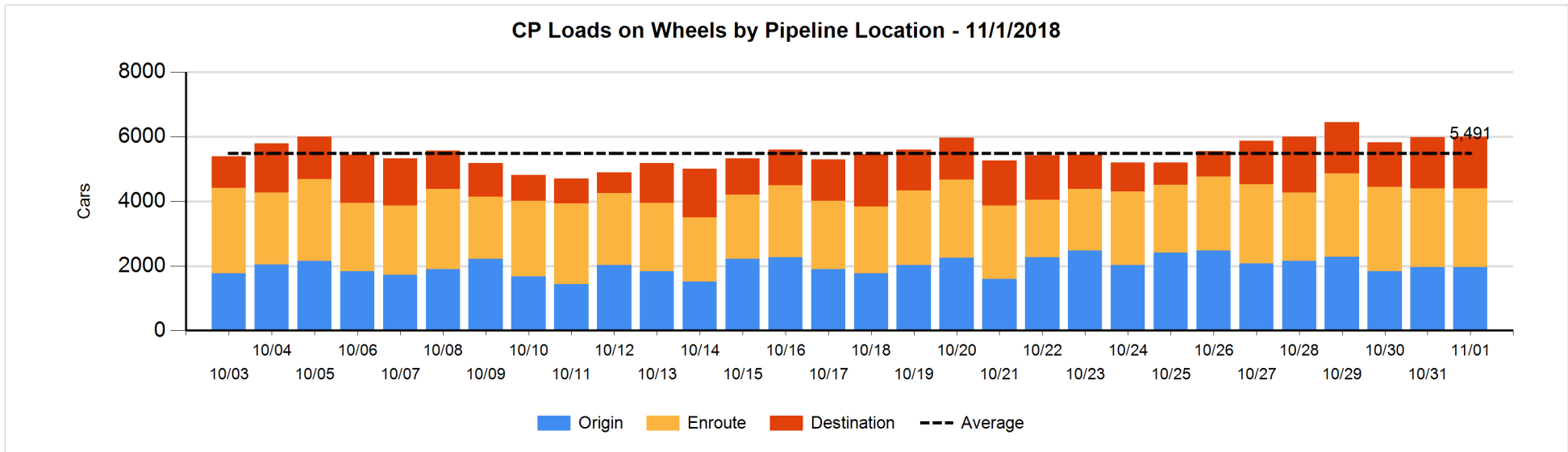
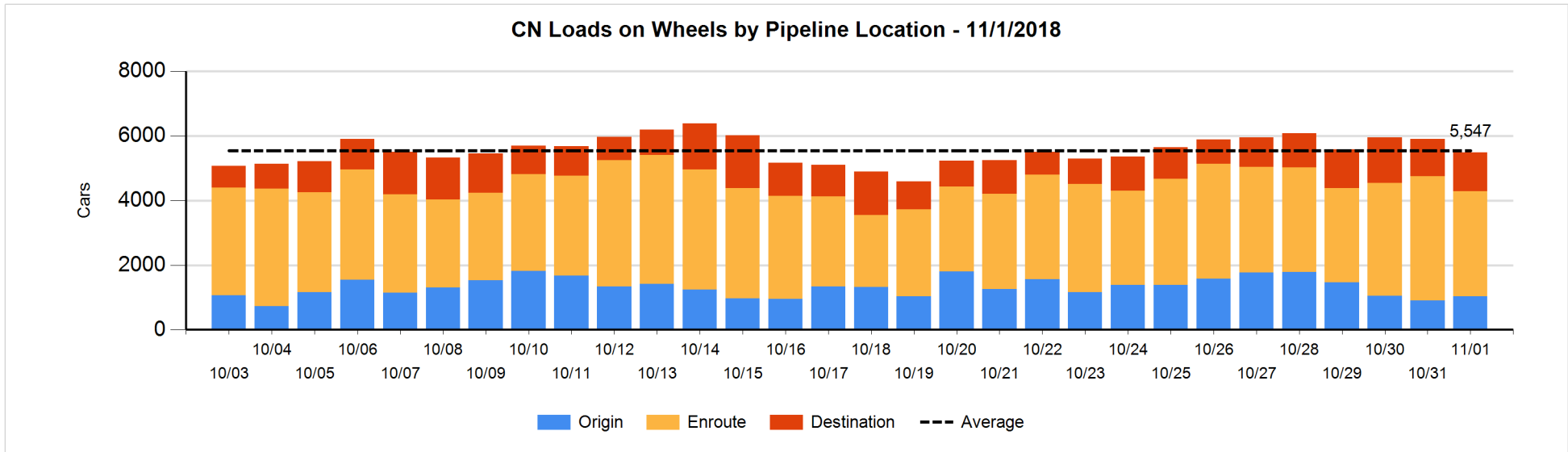


Daily Loads on Wheels By Pipeline Location - 11/1/2018

| | E Canada | Prince Rupert | Thunder Bay | USA/MEX | Vancouver | Total |
|----------------------|----------|---------------|-------------|---------|-----------|-------|
| CN | | | | | | |
| Origin | 4 | 320 | 109 | 9 | 594 | 1,036 |
| Enroute | 300 | 967 | 139 | 178 | 1,661 | 3,245 |
| Destination | 56 | 120 | 230 | 29 | 766 | 1,201 |
| | 360 | 1,407 | 478 | 216 | 3,021 | 5,482 |
| CP | | | | | | |
| Origin | 78 | | 378 | 273 | 1,240 | 1,969 |
| Enroute | 80 | | 191 | 357 | 1,800 | 2,428 |
| Destination | 1 | | 645 | | 965 | 1,611 |
| | 159 | | 1,214 | 630 | 4,005 | 6,008 |
| US Rail / Short Line | | | | | | |
| Origin | | | | | | |
| Enroute | 3 | | | 112 | | 115 |
| Destination | 25 | | | 52 | 22 | 99 |
| | 28 | | | 164 | 22 | 214 |

Change in Daily Loads on Wheels By Pipeline Location - Prior 24 Hours

| | E Canada | Prince Rupert | Thunder Bay | USA/MEX | Vancouver | Total |
|----------------------|----------|---------------|-------------|---------|-----------|-------|
| CN | | | | | | |
| Origin | -16 | 145 | 10 | -7 | -5 | 127 |
| Enroute | 5 | -276 | -200 | -8 | -118 | -597 |
| Destination | -16 | -11 | 161 | 7 | -93 | 48 |
| | -27 | -142 | -29 | -8 | -216 | -422 |
| CP | | | | | | |
| Origin | 0 | | -45 | 45 | 1 | 1 |
| Enroute | 1 | | -252 | -9 | 250 | -10 |
| Destination | 1 | | 41 | | -3 | 39 |
| | 2 | | -256 | 36 | 248 | 30 |
| US Rail / Short Line | | | | | | |
| Origin | | | | | | |
| Enroute | 0 | | | 15 | | 15 |
| Destination | -3 | | | -2 | 7 | 2 |
| | -3 | | | 13 | 7 | 17 |

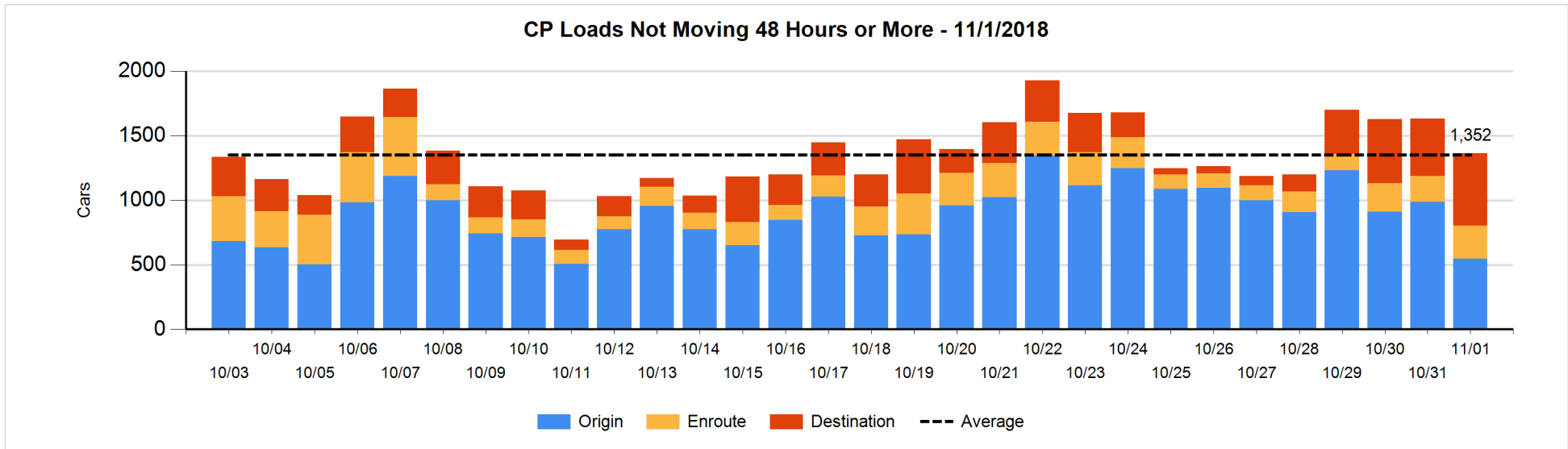
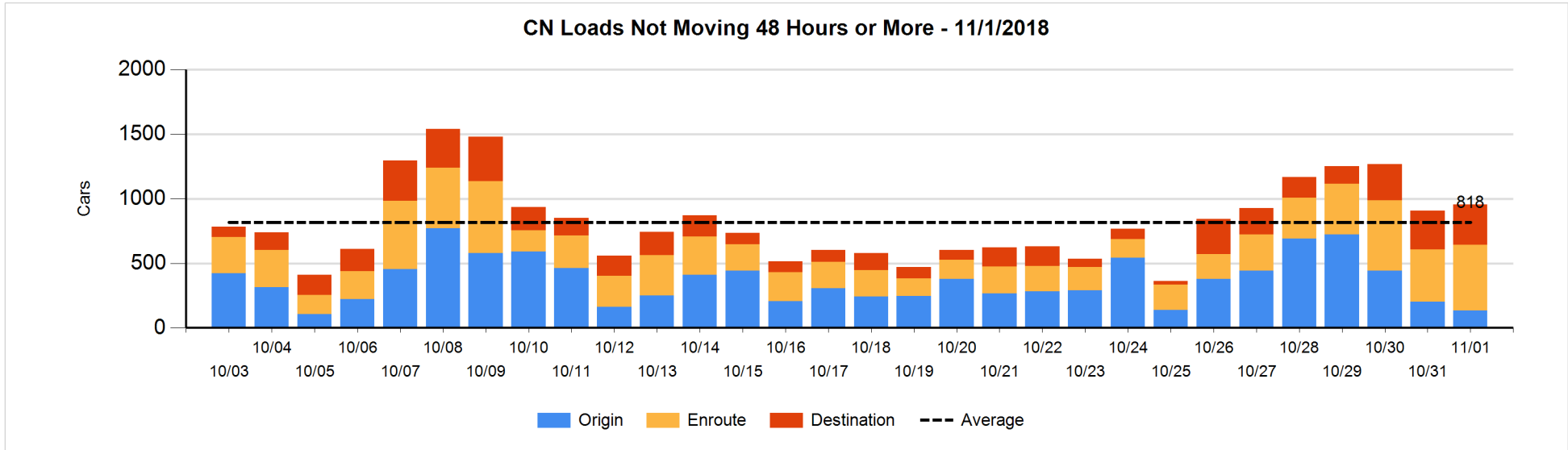


Loads Not Moving 48 Hours or More - 11/1/2018

| | E Canada | Prince Rupert | Thunder Bay | USA/MEX | Vancouver | Total |
|----------------------|----------|---------------|-------------|---------|-----------|-------|
| CN | | | | | | |
| Origin | | 73 | | | 59 | 132 |
| Enroute | 71 | 26 | 5 | 47 | 361 | 510 |
| Destination | 26 | 48 | 2 | 16 | 221 | 313 |
| | 97 | 147 | 7 | 63 | 641 | 955 |
| CP | | | | | | |
| Origin | 78 | | 35 | 94 | 341 | 548 |
| Enroute | 7 | | 21 | 100 | 128 | 256 |
| Destination | | | 260 | | 300 | 560 |
| | 85 | | 316 | 194 | 769 | 1364 |
| US Rail / Short Line | | | | | | |
| Origin | | | | | | |
| Enroute | 3 | | | 26 | | 29 |
| Destination | | | | 38 | 1 | 39 |
| | 3 | | | 64 | 1 | 68 |

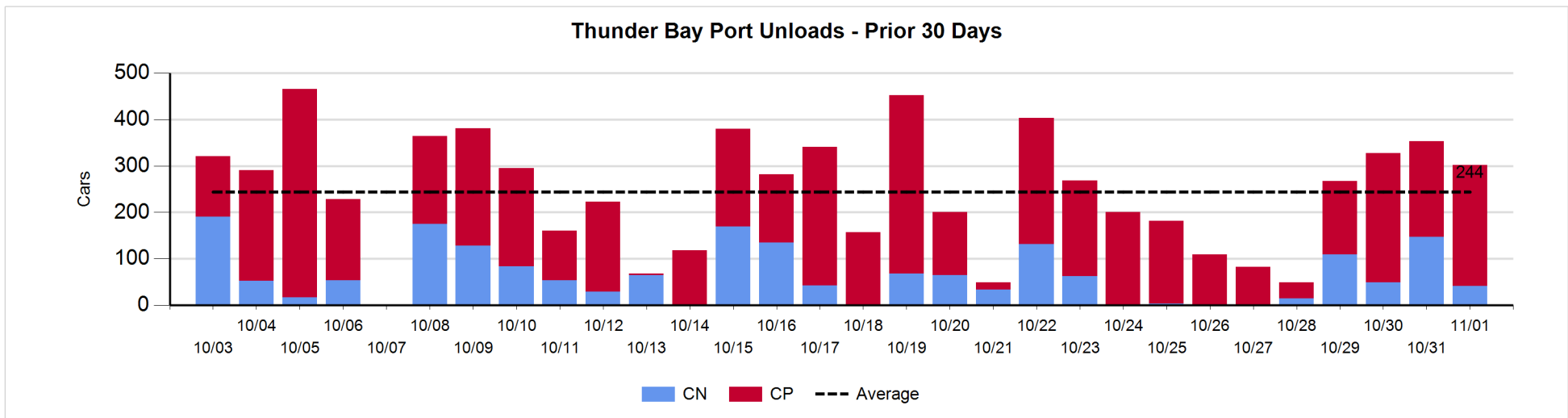
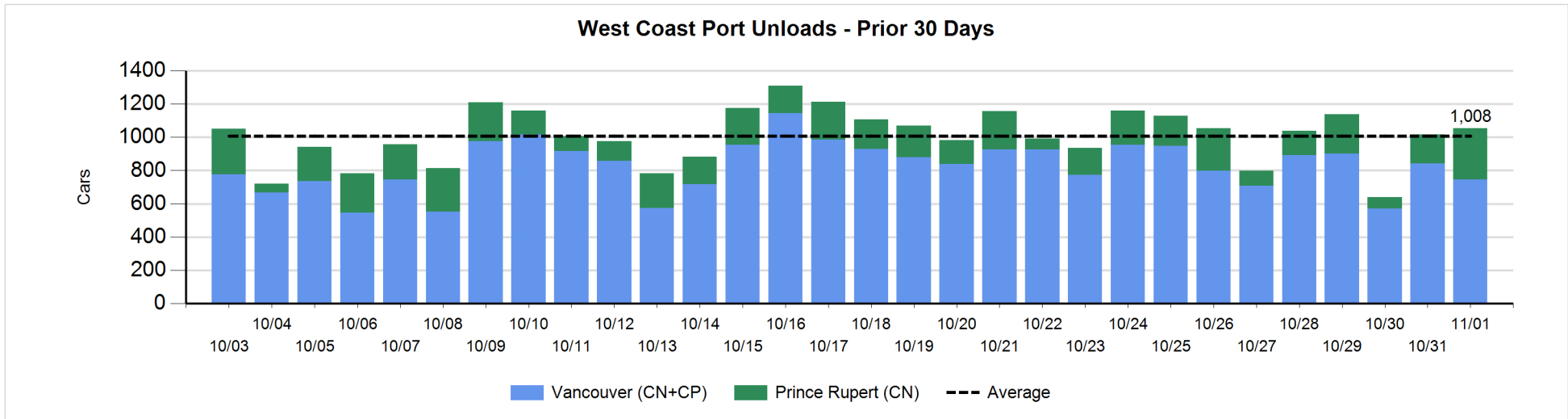
Change in Loads Not Moving 48 Hours or More - 11/1/2018

| | E Canada | Prince Rupert | Thunder Bay | USA/MEX | Vancouver | Total |
|----------------------|----------|---------------|-------------|---------|-----------|-------|
| CN | | | | | | |
| Origin | | 46 | | | -114 | -68 |
| Enroute | 51 | -90 | 5 | 3 | 133 | 102 |
| Destination | -7 | -28 | -30 | -2 | 82 | 15 |
| | 44 | -72 | -25 | 1 | 101 | 49 |
| CP | | | | | | |
| Origin | 1 | | -39 | 38 | -439 | -439 |
| Enroute | 1 | | -56 | 6 | 106 | 57 |
| Destination | | | 66 | | 49 | 115 |
| | 2 | | -29 | 44 | -284 | -267 |
| US Rail / Short Line | | | | | | |
| Origin | | | | | | |
| Enroute | 1 | | | 5 | | 6 |
| Destination | | | | 11 | -2 | 9 |
| | 1 | | | 16 | -2 | 15 |



Port Unloads - 11/1/2018

| | Prince Rupert | Vancouver | West Coast Total | Thunder Bay | Total |
|----|---------------|-----------|------------------|-------------|-------|
| CN | 309 | 374 | 683 | 41 | 724 |
| CP | | 371 | 371 | 261 | 632 |
| | 309 | 745 | 1,054 | 302 | 1,356 |



Port Terminal Status

Vancouver

Daily Activity for 11/1/2018

| | Cars Arrived | Cars Received in Interchange | Cars Delivered in Interchange | Cars Placed for Unloading | Loads on Wheels at Destination As of 11/1/2018 |
|-----|--------------|------------------------------|-------------------------------|---------------------------|--|
| CN | 447 | 118 | 206 | 379 | 766 |
| CP | 219 | 188 | 118 | 400 | 965 |
| SRY | | 18 | | 2 | 22 |

Port Unloads

| | 11/01 | 10/31 | Week To Date | Last Week |
|-----|-------|-------|--------------|-----------|
| CN | 374 | 413 | 1,391 | 2,848 |
| CP | 371 | 428 | 1,668 | 3,150 |
| SRY | 11 | 11 | 27 | 25 |

Age Profile of Loaded Cars Waiting Placement for Unloading

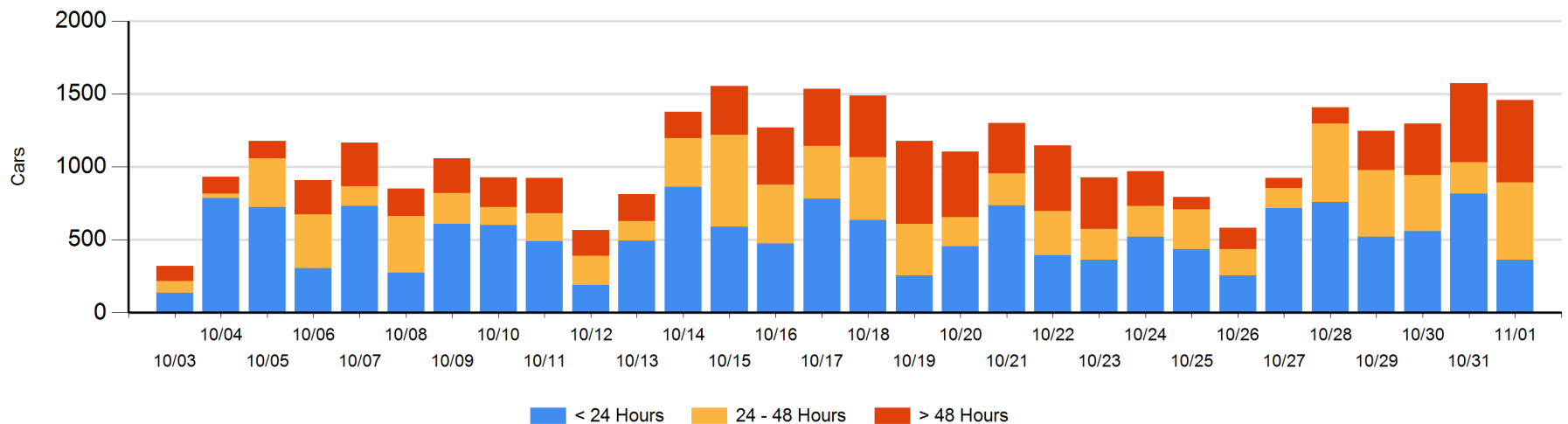
Today

| | < 24 Hrs | 24 - 48 Hrs | > 48-72 Hrs | > 72 Hrs | Total On Hand |
|-----|----------|-------------|-------------|----------|---------------|
| CN | 255 | 245 | 128 | 249 | 877 |
| CP | 108 | 285 | 20 | 168 | 581 |
| SRY | | 1 | | | 1 |

Change in Last 24 Hours

| | < 24 Hrs | 24-48 Hrs | 48 - 72 Hrs | > 72 Hrs |
|-----|----------|-----------|-------------|----------|
| CN | -71 | 87 | 24 | 60 |
| CP | -380 | 226 | -113 | 52 |
| SRY | -1 | 1 | | |

Loaded Cars on Hand Vancouver Waiting for Placement - Last 30 Days All Railways



Port Terminal Status

Prince Rupert

Daily Activity for 11/1/2018

| | Cars Arrived | Cars Received in Interchange | Cars Delivered in Interchange | Cars Placed for Unloading | Loads on Wheels at Destination As of 11/1/2018 |
|----|--------------|------------------------------|-------------------------------|---------------------------|--|
| CN | 298 | | | 353 | 120 |

Port Unloads

| | 11/01 | 10/31 | Week To Date | Last Week |
|----|-------|-------|--------------|-----------|
| CN | 309 | 175 | 787 | 1,110 |

Age Profile of Loaded Cars Waiting Placement for Unloading

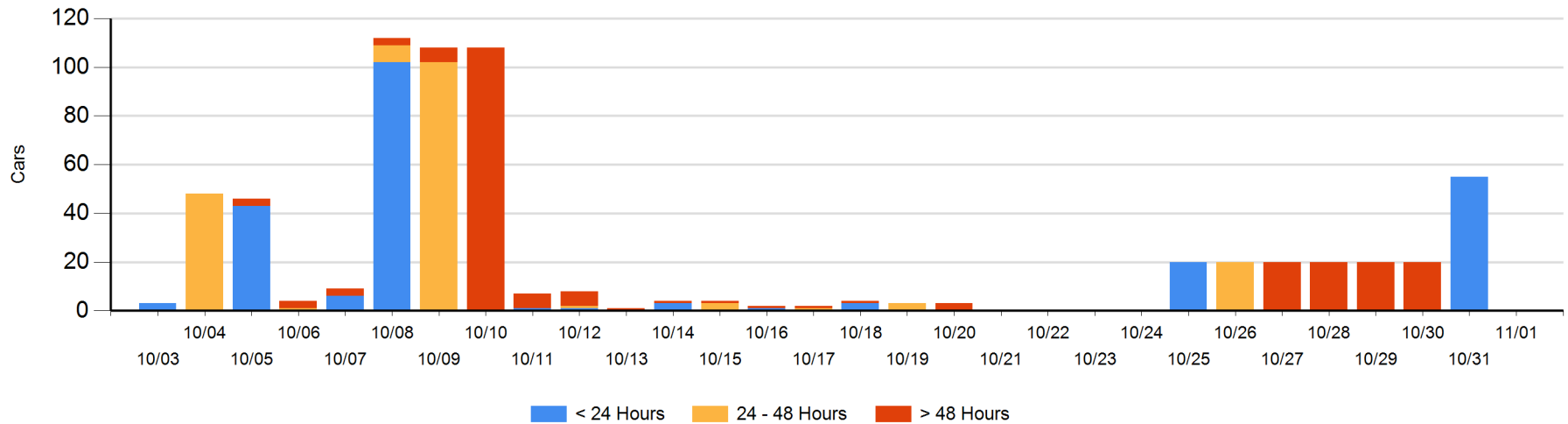
Today

| | < 24 Hrs | 24 - 48 Hrs | > 48-72 Hrs | > 72 Hrs | Total On Hand |
|----|----------|-------------|-------------|----------|---------------|
| CN | | | | | 0 |

Change in Last 24 Hours

| | < 24 Hrs | 24-48 Hrs | 48 - 72 Hrs | > 72 Hrs |
|----|----------|-----------|-------------|----------|
| CN | -55 | | | |

Loaded Cars on Hand Prince Rupert Waiting for Placement - Last 30 Days All Railways



Port Terminal Status

Thunder Bay

Daily Activity for 11/1/2018

| | Cars Arrived | Cars Received in Interchange | Cars Delivered in Interchange | Cars Placed for Unloading | Loads on Wheels at Destination As of 11/1/2018 |
|----|--------------|------------------------------|-------------------------------|---------------------------|--|
| CN | 202 | | | 62 | 230 |
| CP | 302 | | | 198 | 645 |

Port Unloads

| | 11/01 | 10/31 | Week To Date | Last Week |
|----|-------|-------|--------------|-----------|
| CN | 41 | 147 | 346 | 213 |
| CP | 261 | 206 | 903 | 1,083 |

Age Profile of Loaded Cars Waiting Placement for Unloading

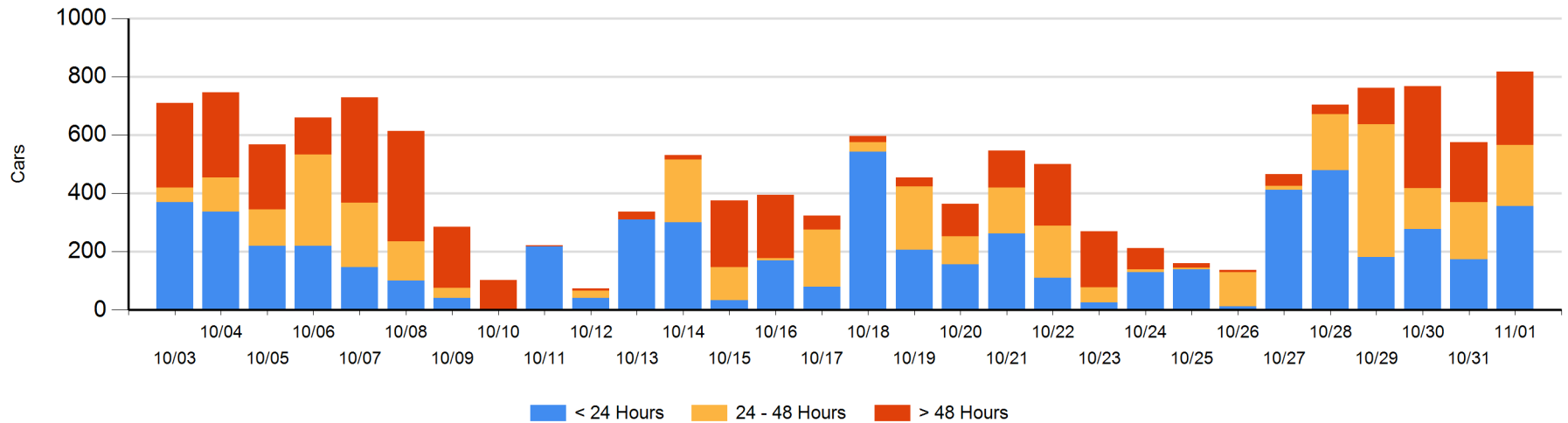
Today

| | < 24 Hrs | 24 - 48 Hrs | > 48-72 Hrs | > 72 Hrs | Total On Hand |
|----|----------|-------------|-------------|----------|---------------|
| CN | 165 | | | | 165 |
| CP | 192 | 208 | 90 | 163 | 653 |

Change in Last 24 Hours

| | < 24 Hrs | 24-48 Hrs | 48 - 72 Hrs | > 72 Hrs |
|----|----------|-----------|-------------|----------|
| CN | 165 | | -25 | |
| CP | 19 | 12 | 64 | 8 |

Loaded Cars on Hand Thunder Bay Waiting for Placement - Last 30 Days All Railways



Measurement Definitions

| | |
|---------------------------------|---|
| Loads on Wheels | <p>Count of loaded rail cars including all rail cars that have been released loaded at origin and have not been reported by the railway as unloaded at destination.</p> <p>Counts include all rail cars (hopper cars and boxcars) moving within a pipeline.</p> |
| Loads Not Moving | <p>Loaded rail cars for which the railways have not reported a movement event for 48 hours or more whether the rail car is at origin, enroute or at destination.</p> |
| Port Unloads | <p>Count of rail cars reported by railways as unloaded at the western port destinations of Vancouver, Prince Rupert and Thunder Bay.</p> <p>Unload counts include all rail cars (hopper cars and boxcars) unloaded by all receivers including major port terminals, transloaders and other receivers.</p> |
| Cars Arrived | <p>Count of rail cars reported as arrived at the destination railway terminal.</p> |
| Cars Received in Interchange | <p>Count of rail cars received in interchange by each railway within a destination railway terminal. Interchange activity is tracked for the Vancouver and Thunder Bay pipelines as applicable.</p> |
| Cars Delivered in Interchange | <p>Count of rail cars delivered in interchange by each railway within a destination railway terminal. Interchange activity is tracked for the Vancouver and Thunder Bay pipelines as applicable.</p> |
| Cars Placed for Unloading | <p>Count of rail cars reported by the railways as placed loaded at the receiver's facility for unloading.</p> |
| Loads on Wheels at Destination | <p>Count of rail cars that remain under load within the destination railway terminal including rail cars that have been reported as placed for unloading but not yet reported as unloaded.</p> |
| Waiting Placement for Unloading | <p>Count of rail cars that have been reported as arrived at the destination railway terminal but not reported as placed for unloading by the railway.</p> <p>For the Ports of Vancouver, Prince Rupert and Thunder Bay the count of rail cars waiting placement for unloading is categorized by age – i.e. the elapsed time from arrival at destination to the current report date.</p> |