

SPEED READ

- Loads on wheels increased overnight, reflecting a rise in both CN and CP volumes. On a net basis, volumes increased due to higher volumes in the Vancouver, Prince Rupert and Thunder Bay corridors offset by reduced traffic in the USA/MEX and E. Canada corridors.
- Network fluidity improved overnight, led by a rise in idle car counts on CN by 3% (+36) offset by a decline in idle car counts on CP by 24% (-418). The total count of cars for 4+ days on both railways decreased 11% (-156) overnight - presently at 1,253 cars.
- One day in Week 15 unloads now behind prior week's performance by more than 50 unloads, marking lower unloads at Prince Rupert and Vancouver offset by improved week over week performance at Thunder Bay.

Loads on Wheels

- Loads on wheels gained 8% (+917) overnight, due to higher traffic on both CN and CP - combined total at 12,065 and 6% above the trailing 30-day average.
- On a net basis, the rise in loads on wheels indicates higher volumes in the Vancouver, Prince Rupert and Thunder Bay corridors offset by reduced traffic in the USA/MEX and E. Canada corridors.
- CN volumes increased 6% (+331) overnight, with higher traffic in the Prince Rupert and Vancouver corridors offset by reduced traffic in the E. Canada and USA/MEX corridors. System wide CN loads on wheels presently at 5,957 and 6% above the trailing 30-day average.
- CP volumes increased significantly by 13% (+669) overnight, driven by a rise in traffic across all corridors other than USA/MEX. CP system wide loads on wheels presently at 5,845 and 7% above the trailing 30-day average.
- Vancouver presently at 7,251, the highest seen in the last 30 days, gained significantly by 12% (+772) overnight, now 6% above the trailing 30-day average.
- The Prince Rupert pipeline presently at 1,563, gained significantly by 18% (+240) overnight, and 10% above the trailing 30-day average.
- Thunder Bay volumes rose marginally by 2% (+31) overnight - currently at 1,708 and 2% above the trailing 30-day average, with 68% of traffic moving on CP.

Hopper Car Rationing

- CP has rationed 8 hopper cars for week 13.

Loads Not Moving

- **The count of cars not moving for 48+ hours fell 14% (-382) overnight, marking higher counts on CN offset by lower counts on CP. Idle car counts presently at 2,416 and 6% above the trailing 30-day average.**
- CN
 - **The count of idle cars for 48+ hours increased for the third consecutive day, up 3% (+36) overnight - presently at 1,082 cars.**
 - The number of cars idle for 4+ days rose 7% (+30) overnight - currently at 477 cars.
 - The count of cars not moving for 7+ days gained 19% (+37) overnight and have now increased for the third consecutive day - presently at 235 cars, the highest seen in the last 30 days.
 - Vancouver represents 73% of all idle cars.
 - In total 25% of all idle cars are dwelling at origin locations.
- CP
 - **CP idle car counts for 48+ hours decreased 24% (-418) overnight - presently at 1,334 cars.**

- The number of cars idle for 4+ days declined 19% (-186) overnight - presently at 776 cars.
- The number of cars idle for 7+ days decreased slightly by 1% (-4) overnight - currently at 285 cars.
- Vancouver accounts for 42% of all idle cars.
- In total 61% of all idle cars are dwelling at origin locations.

Port Performance

- CN and CP reported a total of 1,320 cars unloaded at the three major ports, now 5% above the trailing 30-day average. One day in Week 15 unloads now behind last week's pace by more than 50 unloads, marking lower unloads at Prince Rupert and Vancouver offset by higher unloads at Thunder Bay.
- Vancouver
 - 894 unloads reported by CN and CP at the Port of Vancouver; CN - 536 and CP - 358. One day in Week 15 unloads are tracking behind last week's performance by 1 unload.
 - There are 2,050 cars on site at Vancouver with more than 650 cars arriving at the port in the last 24 hours.
 - CN and CP have 900 cars in British Columbia en route to Vancouver, with 500 cars at Kamloops and west, and 71% of traffic moving on CN.
- Prince Rupert
 - Prince Rupert reported 137 unloads, now behind last week's unloads after one day by 100 unloads.
 - Loads on wheels now above 1,000 cars - presently at 1,563 cars.
 - There are 450 cars west of Jasper en route to Prince Rupert.
 - There are more than 50 cars on site at Prince Rupert with 100 cars arriving at the port in the last 24 hours. Given the structure of the pipeline, there appears to be sufficient cars available to support unloads in the next few days.
- Thunder Bay
 - 289 unloads were reported at Thunder Bay yesterday. One day in Week 15 unloads are tracking ahead of last week's pace by 22 unloads.
 - There are more than 550 cars on site at Thunder Bay with more than 200 cars arriving at the port in the prior 24 hours.
 - There are more than 300 cars en route to Thunder Bay from Winnipeg and east. Cars on hand and those en route should support unloads in the next few days.

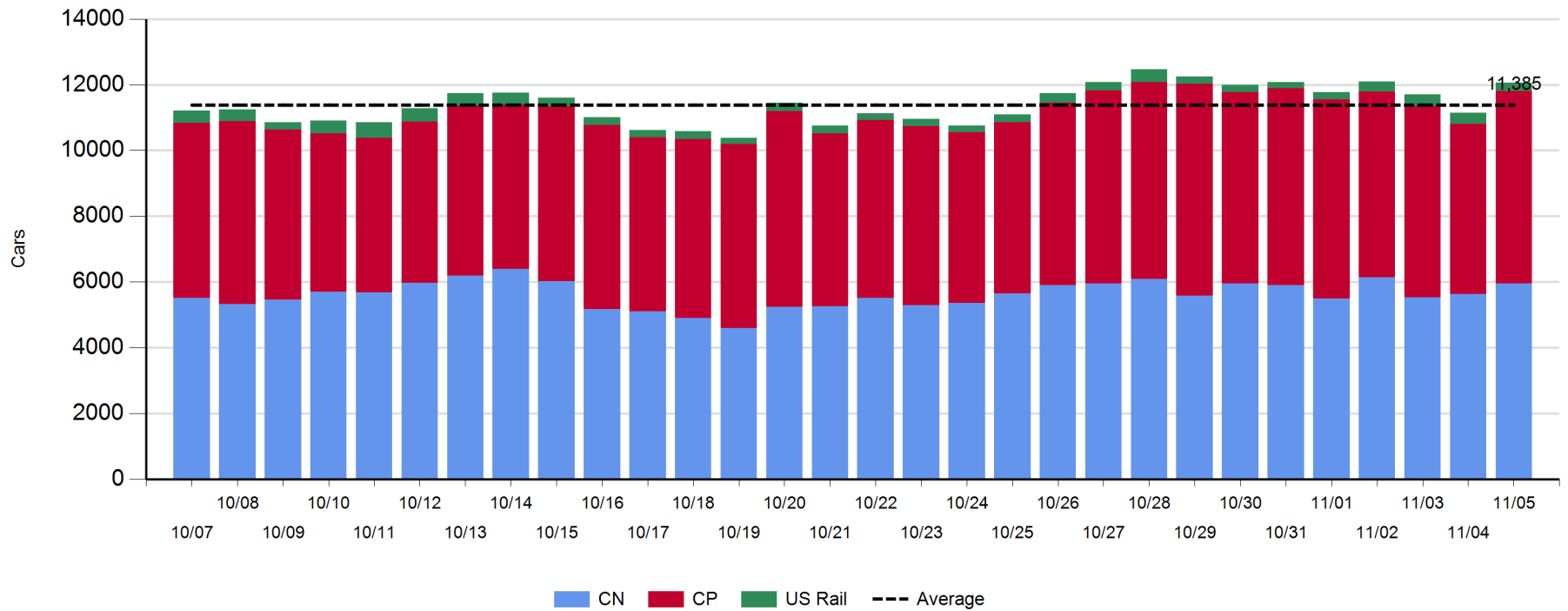
Daily Loads on Wheels - 11/5/2018

	E Canada	Prince Rupert	Thunder Bay	USA/MEX	Vancouver	Total
CN	331	1,563	553	323	3,187	5,957
CP	144		1,155	488	4,058	5,845
Short Line	14				6	20
US Rail				243		243
	489	1,563	1,708	1,054	7,251	12,065

Change in Loads on Wheels - Prior 24 Hours

	E Canada	Prince Rupert	Thunder Bay	USA/MEX	Vancouver	Total
CN	-42	240	0	-9	142	331
CP	5		31	-33	666	669
Short Line	-7				-10	-17
US Rail				-40	-26	-66
	-44	240	31	-82	772	917

Loads on Wheels - Prior 30 Days

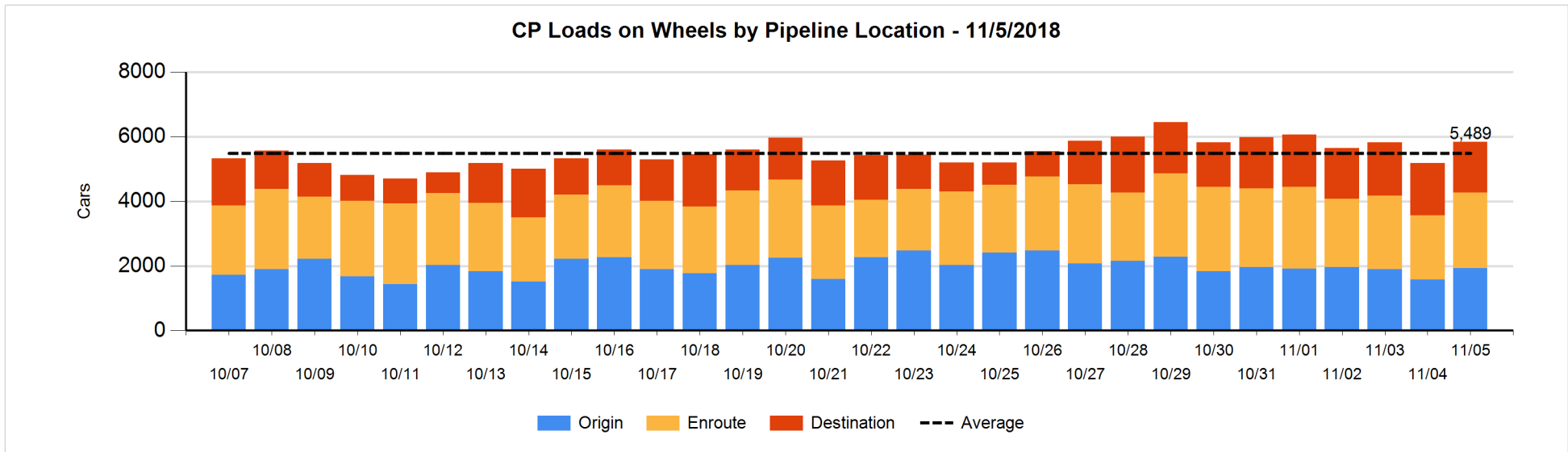
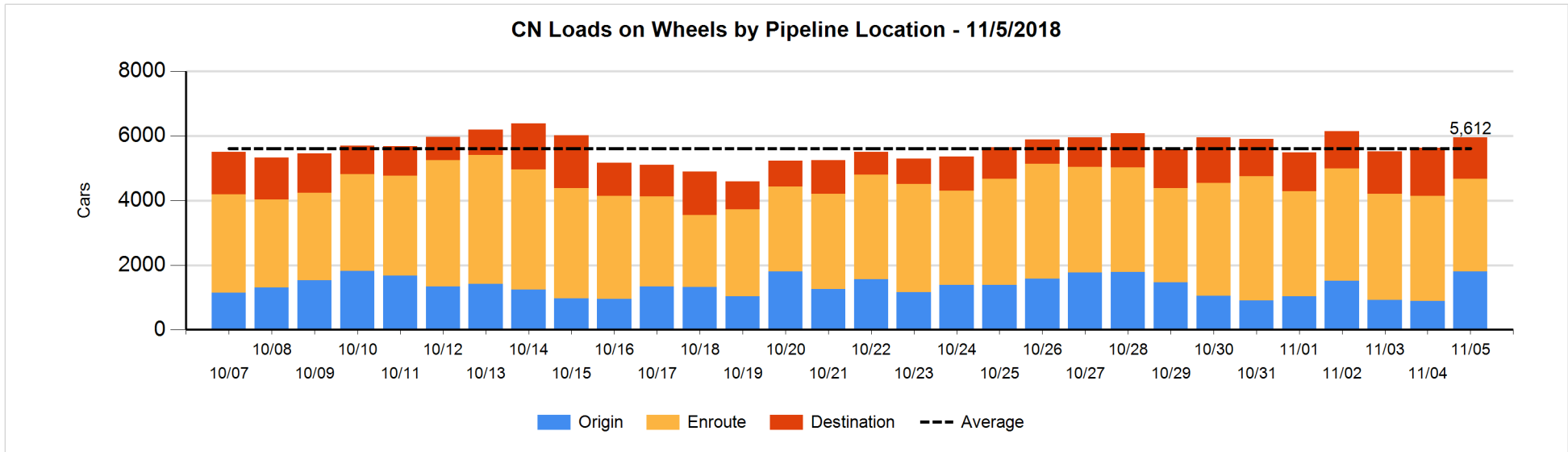


Daily Loads on Wheels By Pipeline Location - 11/5/2018

	E Canada	Prince Rupert	Thunder Bay	USA/MEX	Vancouver	Total
CN						
Origin		606	100	115	978	1,799
Enroute	279	893	206	189	1,304	2,871
Destination	52	64	247	19	905	1,287
	331	1,563	553	323	3,187	5,957
CP						
Origin	58		628	176	1,066	1,928
Enroute	82		206	213	1,848	2,349
Destination	4		321	99	1,144	1,568
	144		1,155	488	4,058	5,845
US Rail / Short Line						
Origin						
Enroute				148		148
Destination	14			95	6	115
	14			243	6	263

Change in Daily Loads on Wheels By Pipeline Location - Prior 24 Hours

	E Canada	Prince Rupert	Thunder Bay	USA/MEX	Vancouver	Total
CN						
Origin	-7	255	-85	13	730	906
Enroute	-64	28	-13	-19	-314	-382
Destination	29	-43	98	-3	-274	-193
	-42	240	0	-9	142	331
CP						
Origin	-20		314	3	52	349
Enroute	21		-122	-50	518	367
Destination	4		-161	14	96	-47
	5		31	-33	666	669
US Rail / Short Line						
Origin						
Enroute				-56		-56
Destination	-7			16	-36	-27
	-7			-40	-36	-83

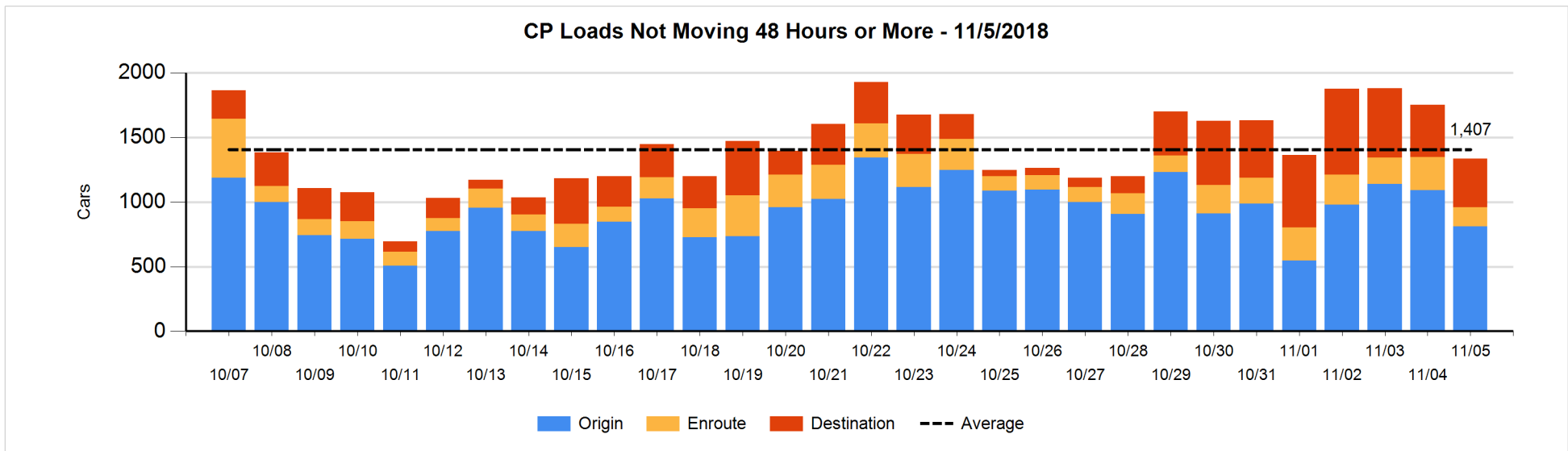
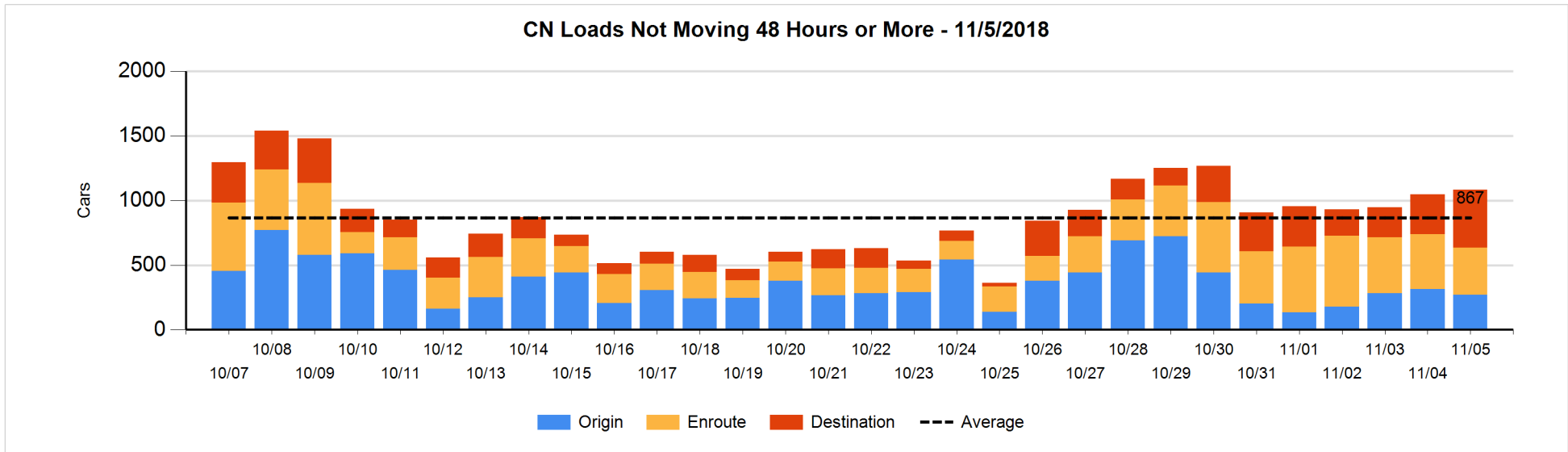


Loads Not Moving 48 Hours or More - 11/5/2018

	E Canada	Prince Rupert	Thunder Bay	USA/MEX	Vancouver	Total
CN						
Origin		22		99	150	271
Enroute	38	19	4	54	248	363
Destination	3	21	26	9	389	448
	41	62	30	162	787	1082
CP						
Origin	53		308	173	275	809
Enroute	13		4	110	25	152
Destination			110		263	373
	66		422	283	563	1334
US Rail / Short Line						
Origin						
Enroute				91		91
Destination	4			37	2	43
	4			128	2	134

Change in Loads Not Moving 48 Hours or More - 11/5/2018

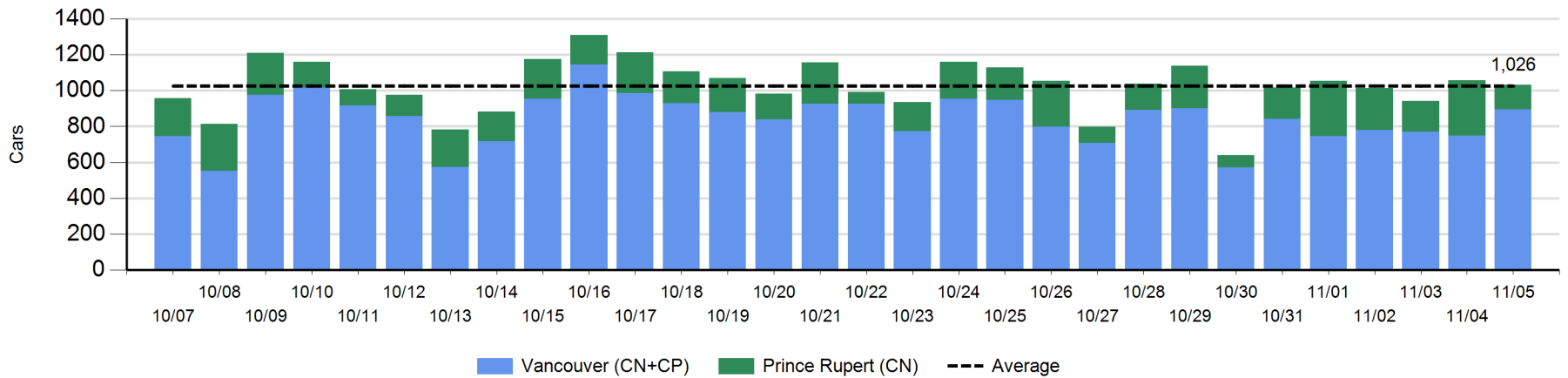
	E Canada	Prince Rupert	Thunder Bay	USA/MEX	Vancouver	Total
CN						
Origin	-7	-122		0	87	-42
Enroute	-29	0	4	-12	-24	-61
Destination	2	1	10	-13	139	139
	-34	-121	14	-25	202	36
CP						
Origin	-25		-6	0	-250	-281
Enroute	2		0	-42	-66	-106
Destination			-80		49	-31
	-23		-86	-42	-267	-418
US Rail / Short Line						
Origin						
Enroute				-37		-37
Destination	-13			-6	-1	-20
	-13			-43	-1	-57



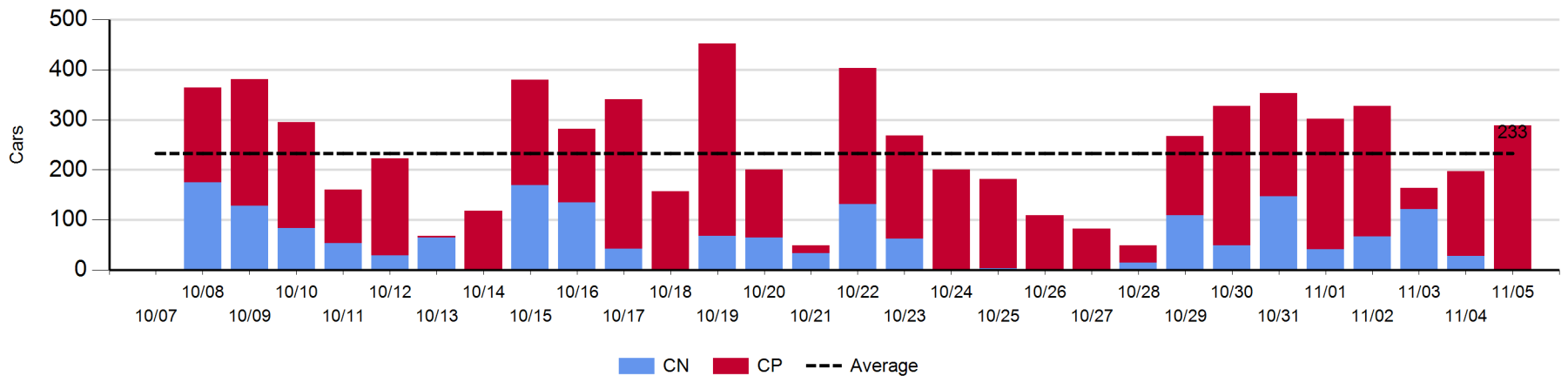
Port Unloads - 11/5/2018

	Prince Rupert	Vancouver	West Coast Total	Thunder Bay	Total
CN	137	536	673		673
CP		358	358	289	647
	137	894	1,031	289	1,320

West Coast Port Unloads - Prior 30 Days



Thunder Bay Port Unloads - Prior 30 Days



Port Terminal Status

Vancouver

Daily Activity for 11/5/2018

	Cars Arrived	Cars Received in Interchange	Cars Delivered in Interchange	Cars Placed for Unloading	Loads on Wheels at Destination As of 11/5/2018
CN	288	131	211	460	905
CP	389	211	137	208	1,144
SRY		6		13	6

Port Unloads

	11/05	11/04	Week To Date	Last Week
CN	536	332	536	2,382
CP	358	417	358	2,975
SRY	11		11	36

Age Profile of Loaded Cars Waiting Placement for Unloading

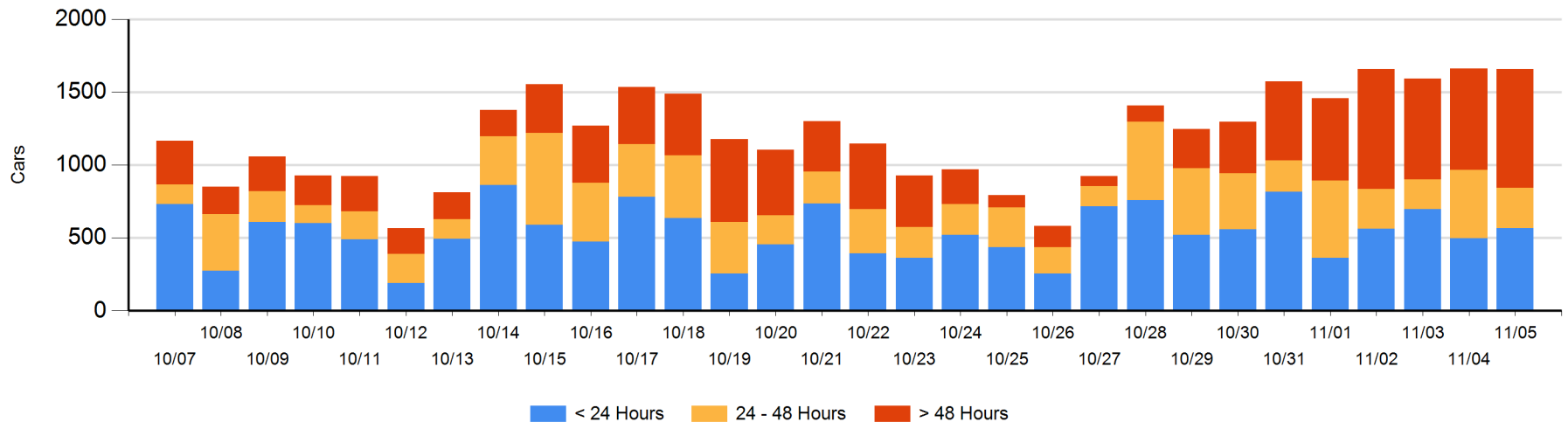
Today

	< 24 Hrs	24 - 48 Hrs	> 48-72 Hrs	> 72 Hrs	Total On Hand
CN	288	165	113	286	852
CP	277	113	119	296	805
SRY				1	1

Change in Last 24 Hours

	< 24 Hrs	24-48 Hrs	48 - 72 Hrs	> 72 Hrs
CN	-95	28	90	12
CP	163	-221	-37	55
SRY				0

Loaded Cars on Hand Vancouver Waiting for Placement - Last 30 Days All Railways



Port Terminal Status

Prince Rupert

Daily Activity for 11/5/2018

	Cars Arrived	Cars Received in Interchange	Cars Delivered in Interchange	Cars Placed for Unloading	Loads on Wheels at Destination As of 11/5/2018
CN	95			96	64

Port Unloads

	11/05	11/04	Week To Date	Last Week
CN	137	308	137	1,502

Age Profile of Loaded Cars Waiting Placement for Unloading

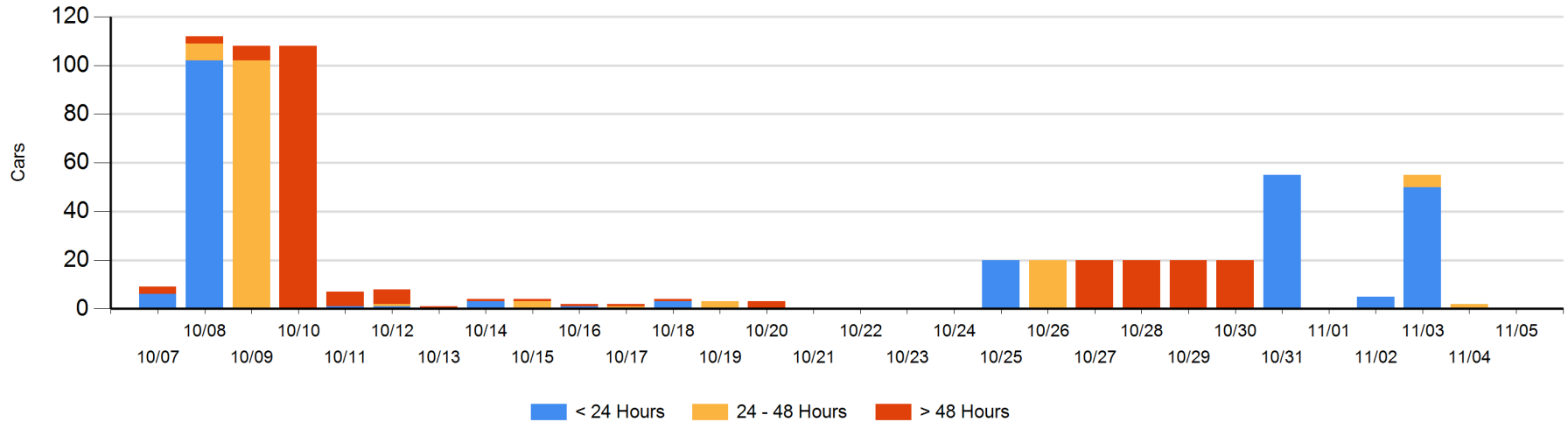
Today

	< 24 Hrs	24 - 48 Hrs	> 48-72 Hrs	> 72 Hrs	Total On Hand
CN					0

Change in Last 24 Hours

	< 24 Hrs	24-48 Hrs	48 - 72 Hrs	> 72 Hrs
CN		-2		

Loaded Cars on Hand Prince Rupert Waiting for Placement - Last 30 Days All Railways



Port Terminal Status

Thunder Bay

Daily Activity for 11/5/2018

	Cars Arrived	Cars Received in Interchange	Cars Delivered in Interchange	Cars Placed for Unloading	Loads on Wheels at Destination As of 11/5/2018
CN	98			220	247
CP	128			204	321

Port Unloads

	11/05	11/04	Week To Date	Last Week
CN		28		562
CP	289	169	289	1,375

Age Profile of Loaded Cars Waiting Placement for Unloading

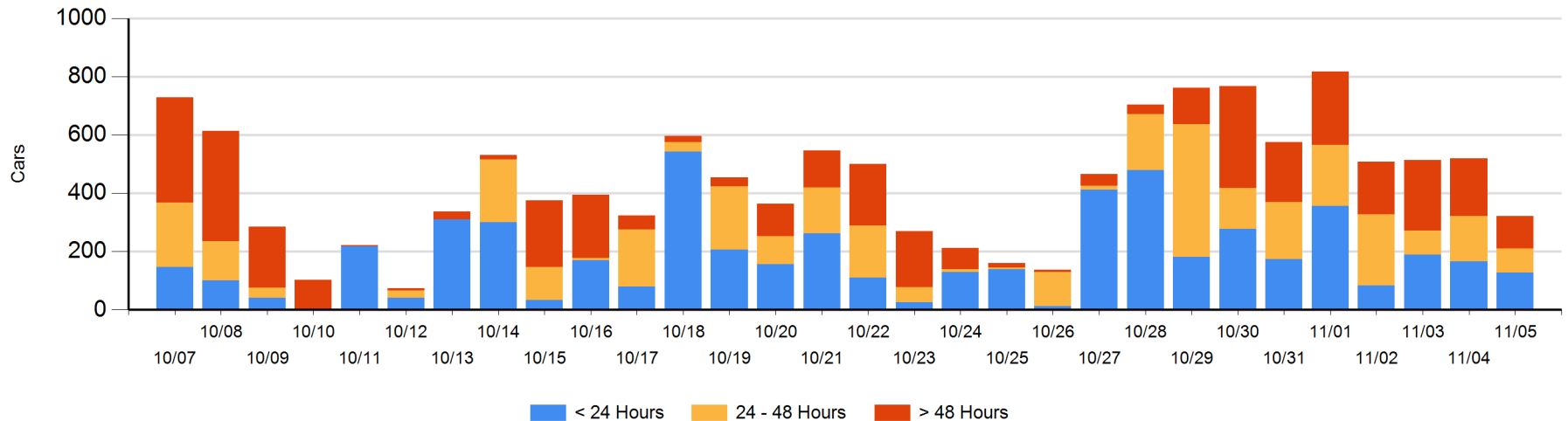
Today

	< 24 Hrs	24 - 48 Hrs	> 48-72 Hrs	> 72 Hrs	Total On Hand
CN			21	1	22
CP	128	82	26	64	300

Change in Last 24 Hours

	< 24 Hrs	24-48 Hrs	48 - 72 Hrs	> 72 Hrs
CN		-129	20	-13
CP	-39	56	-24	-68

Loaded Cars on Hand Thunder Bay Waiting for Placement - Last 30 Days All Railways



Measurement Definitions

Loads on Wheels	Count of loaded rail cars including all rail cars that have been released loaded at origin and have not been reported by the railway as unloaded at destination. Counts include all rail cars (hopper cars and boxcars) moving within a pipeline.
Loads Not Moving	Loaded rail cars for which the railways have not reported a movement event for 48 hours or more whether the rail car is at origin, enroute or at destination.
Port Unloads	Count of rail cars reported by railways as unloaded at the western port destinations of Vancouver, Prince Rupert and Thunder Bay. Unload counts include all rail cars (hopper cars and boxcars) unloaded by all receivers including major port terminals, transloaders and other receivers.
Cars Arrived	Count of rail cars reported as arrived at the destination railway terminal.
Cars Received in Interchange	Count of rail cars received in interchange by each railway within a destination railway terminal. Interchange activity is tracked for the Vancouver and Thunder Bay pipelines as applicable.
Cars Delivered in Interchange	Count of rail cars delivered in interchange by each railway within a destination railway terminal. Interchange activity is tracked for the Vancouver and Thunder Bay pipelines as applicable.
Cars Placed for Unloading	Count of rail cars reported by the railways as placed loaded at the receiver's facility for unloading.
Loads on Wheels at Destination	Count of rail cars that remain under load within the destination railway terminal including rail cars that have been reported as placed for unloading but not yet reported as unloaded.
Waiting Placement for Unloading	Count of rail cars that have been reported as arrived at the destination railway terminal but not reported as placed for unloading by the railway. For the Ports of Vancouver, Prince Rupert and Thunder Bay the count of rail cars waiting placement for unloading is categorized by age – i.e. the elapsed time from arrival at destination to the current report date.