

SPEED READ

- Loads on wheels decreased overnight, reflecting a decline in both CN and CP volumes. On a net basis, volumes decreased due to lower volumes across all corridors other than E. Canada.
- Network fluidity improved overnight, led by a decline in idle car counts on both CN and CP by 43% (-470) and 31% (-415), respectively. The total count of cars for 4+ days on both railways fell 19% (-243) overnight - now at 1,012 cars.
- Two days in Week 15 unloads now ahead of prior week's performance by about 400 unloads, reflecting improved week over week performance across all three major ports - Vancouver, Thunder Bay and Prince Rupert.

Loads on Wheels

- Loads on wheels fell 6% (-725) overnight, due to reduced volumes on both CN and CP - combined total at 11,346 and in line with the trailing 30-day average.
- On a net basis, the decline in loads on wheels indicates reduced volumes across all corridors other than E. Canada.
- CN volumes declined 8% (-505) overnight, with reduced traffic in the Vancouver, Prince Rupert and Thunder Bay corridors offset by higher traffic in the E. Canada and USA/MEX corridors. System wide CN loads on wheels now at 5,453 and 3% below the trailing 30-day average.
- CP volumes declined 4% (-223) overnight, driven by a decline in traffic across all corridors other than Vancouver. CP system wide loads on wheels now at 5,627 and 2% above the trailing 30-day average.
- Vancouver now at 7,121, declined slightly by 2% (-131) overnight, now 4% above the trailing 30-day average.
- The Prince Rupert pipeline currently at 1,385, fell significantly by 11% (-178) overnight, and 2% below the trailing 30 day-average.
- Thunder Bay volumes declined significantly by 18% (-315) overnight - now at 1,393 and 17% below the trailing 30-day average, with 72% of traffic moving on CP.

Hopper Car Rationing

- CP rationed 8 hopper cars in week 13.

Loads Not Moving

- **The count of cars not moving for 48+ hours declined for the third consecutive day, down 37% (-885) overnight, marking reduced counts on both CN and CP. Idle car counts now at 1,536, the lowest seen in the last 30 days, and 31% below the trailing 30 day-average.**
- CN
 - **The count of idle cars for 48+ hours decreased 43% (-470) overnight - now at 612 cars.**
 - The number of cars idle for 4+ days fell 18% (-84) overnight - currently at 393 cars.
 - The count of cars not moving for 7+ days increased for the fourth consecutive day, up 42% (+99) overnight - now at 334 cars, the highest seen in the last 30 days.
 - Vancouver represents 58% of all idle cars.
 - In total 29% of all idle cars are dwelling at origin locations.
- CP
 - **CP idle car counts for 48+ hours declined for the third consecutive day, down 31% (-415) overnight - now at 924 cars.**
 - The number of cars idle for 4+ days declined 20% (-159) overnight - now at 619 cars.

- The number of cars idle for 7+ days declined significantly by 53% (-151) overnight - now at 136 cars.
- Vancouver accounts for 50% of all idle cars.
- In total 61% of all idle cars are dwelling at origin locations.

Port Performance

- CN and CP reported a total of 1,430 cars unloaded at the three major ports, now 12% above the trailing 30-day average. Two days in Week 15 unloads now ahead of last week's pace by about 400 unloads, reflecting higher unloads across all three major ports - Vancouver, Thunder Bay and Prince Rupert.
- Vancouver
 - 913 unloads reported by CN and CP at the Port of Vancouver; CN - 426 and CP - 487. Two days in Week 15 unloads are tracking ahead of last week's performance by 350 unloads.
 - There are more than 1,600 cars on site at Vancouver with more than 450 cars arriving at the port in the last 24 hours.
 - CN and CP have more than 1,400 cars in British Columbia en route to Vancouver, with less than 550 cars at Kamloops and west, and 56% of traffic moving on CP.
- Prince Rupert
 - Prince Rupert reported 193 unloads, now ahead of last week's unloads after two days by 27 unloads.
 - Loads on wheels now above 1,000 cars - now at 1,385 cars.
 - There are 450 cars west of Jasper en route to Prince Rupert.
 - There are about 250 cars on site at Prince Rupert with more than 350 cars arriving at the port in the last 24 hours. Given the structure of the pipeline, there appears to be sufficient cars available to support unloads in the next few days.
- Thunder Bay
 - 324 unloads were reported at Thunder Bay yesterday. Two days in Week 15 unloads are tracking ahead of last week's pace by 19 unloads.
 - There are 550 cars on site at Thunder Bay with more than 300 cars arriving at the port in the prior 24 hours.
 - There are 100 cars en route to Thunder Bay from Winnipeg and east. Cars on hand and those en route should support unloads in the next few days.

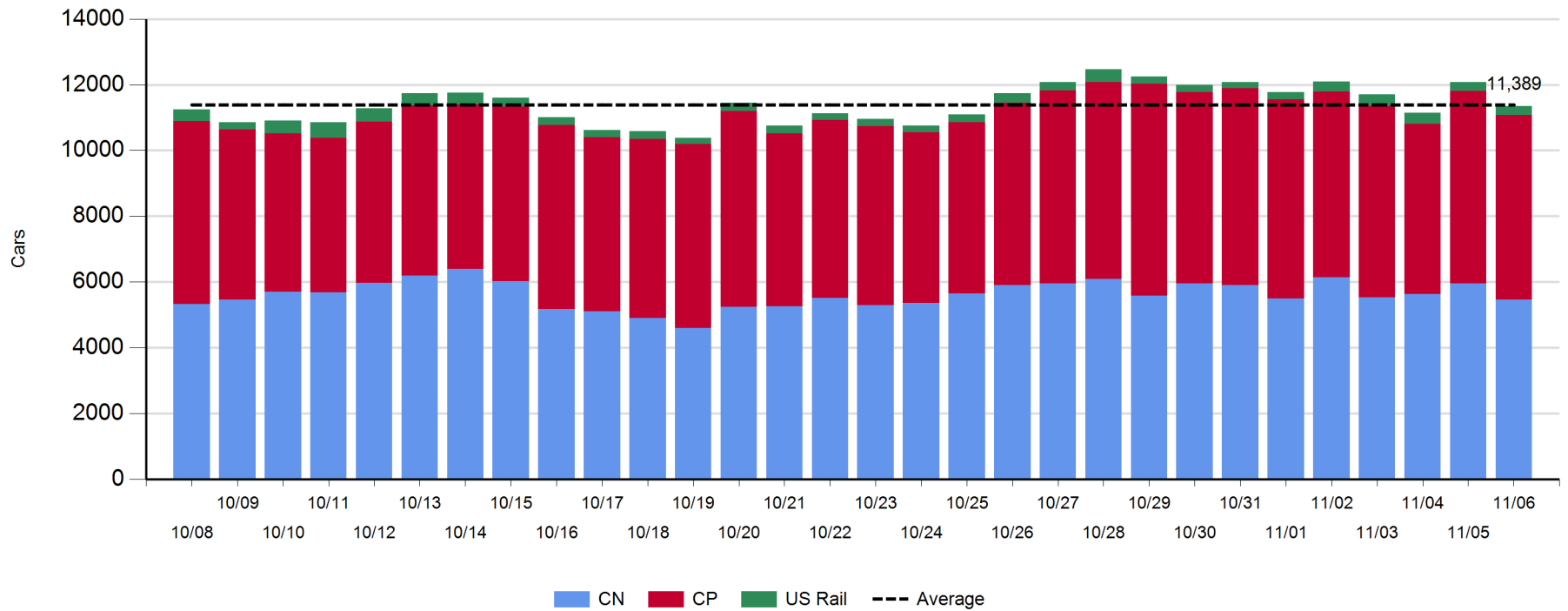
Daily Loads on Wheels - 11/6/2018

| | E Canada | Prince Rupert | Thunder Bay | USA/MEX | Vancouver | Total |
|------------|----------|---------------|-------------|---------|-----------|--------|
| CN | 355 | 1,385 | 389 | 325 | 2,999 | 5,453 |
| CP | 120 | | 1,004 | 415 | 4,088 | 5,627 |
| Short Line | 34 | | | | 34 | 68 |
| US Rail | | | | 198 | | 198 |
| | 509 | 1,385 | 1,393 | 938 | 7,121 | 11,346 |

Change in Loads on Wheels - Prior 24 Hours

| | E Canada | Prince Rupert | Thunder Bay | USA/MEX | Vancouver | Total |
|------------|----------|---------------|-------------|---------|-----------|-------|
| CN | 24 | -178 | -164 | 2 | -189 | -505 |
| CP | -26 | | -151 | -76 | 30 | -223 |
| Short Line | 20 | | | | 28 | 48 |
| US Rail | | | | -45 | | -45 |
| | 18 | -178 | -315 | -119 | -131 | -725 |

Loads on Wheels - Prior 30 Days

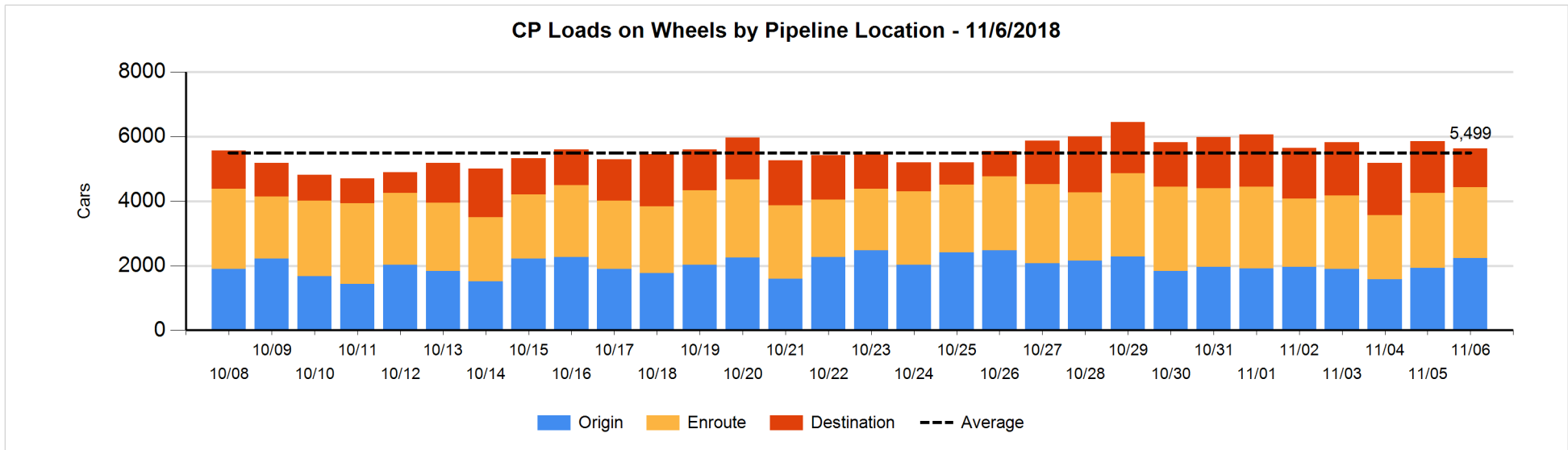
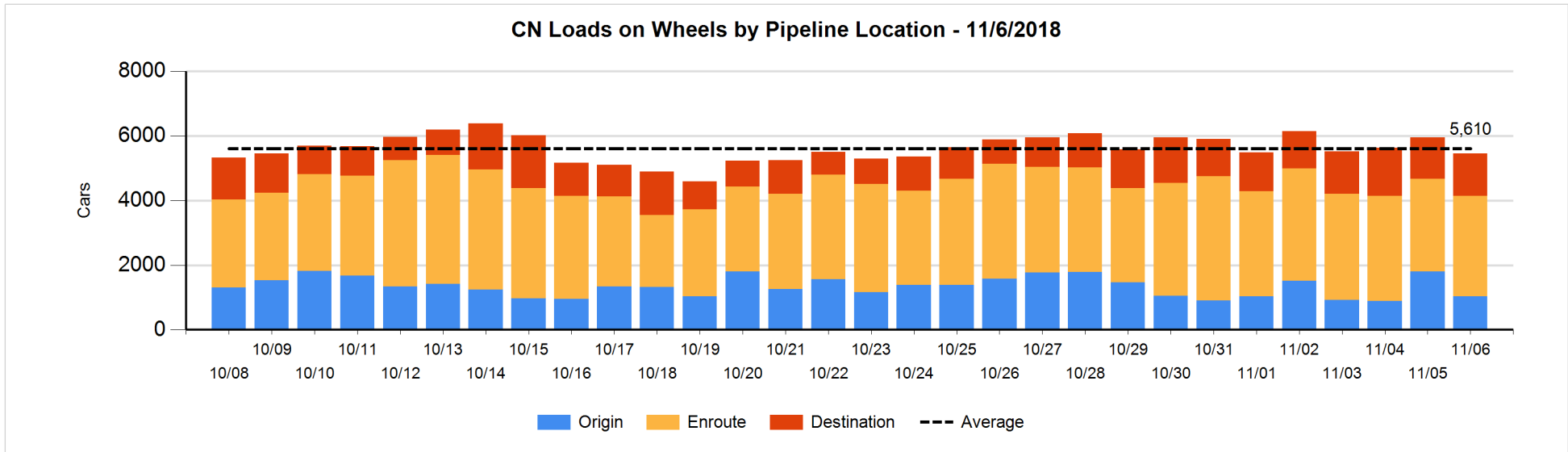


Daily Loads on Wheels By Pipeline Location - 11/6/2018

| | E Canada | Prince Rupert | Thunder Bay | USA/MEX | Vancouver | Total |
|----------------------|----------|---------------|-------------|---------|-----------|-------|
| CN | | | | | | |
| Origin | 29 | 413 | 4 | 19 | 564 | 1,029 |
| Enroute | 265 | 735 | 199 | 267 | 1,649 | 3,115 |
| Destination | 61 | 237 | 186 | 39 | 786 | 1,309 |
| | 355 | 1,385 | 389 | 325 | 2,999 | 5,453 |
| CP | | | | | | |
| Origin | 16 | | 518 | 130 | 1,567 | 2,231 |
| Enroute | 103 | | 115 | 253 | 1,725 | 2,196 |
| Destination | 1 | | 371 | 32 | 796 | 1,200 |
| | 120 | | 1,004 | 415 | 4,088 | 5,627 |
| US Rail / Short Line | | | | | | |
| Origin | | | | | | |
| Enroute | 2 | | | 133 | | 135 |
| Destination | 32 | | | 65 | 34 | 131 |
| | 34 | | | 198 | 34 | 266 |

Change in Daily Loads on Wheels By Pipeline Location - Prior 24 Hours

| | E Canada | Prince Rupert | Thunder Bay | USA/MEX | Vancouver | Total |
|----------------------|----------|---------------|-------------|---------|-----------|-------|
| CN | | | | | | |
| Origin | 29 | -193 | -96 | -96 | -414 | -770 |
| Enroute | -14 | -158 | -7 | 78 | 344 | 243 |
| Destination | 9 | 173 | -61 | 20 | -119 | 22 |
| | 24 | -178 | -164 | 2 | -189 | -505 |
| CP | | | | | | |
| Origin | -44 | | -110 | -47 | 501 | 300 |
| Enroute | 21 | | -91 | 63 | -123 | -130 |
| Destination | -3 | | 50 | -92 | -348 | -393 |
| | -26 | | -151 | -76 | 30 | -223 |
| US Rail / Short Line | | | | | | |
| Origin | | | | | | |
| Enroute | 2 | | | -15 | | -13 |
| Destination | 18 | | | -30 | 28 | 16 |
| | 20 | | | -45 | 28 | 3 |

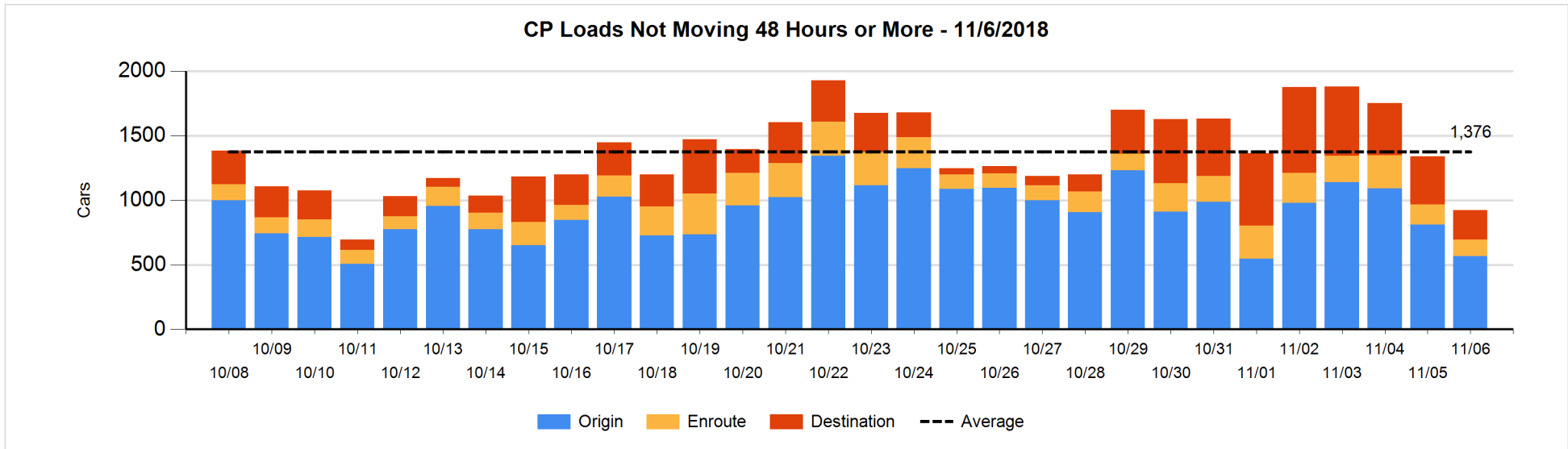
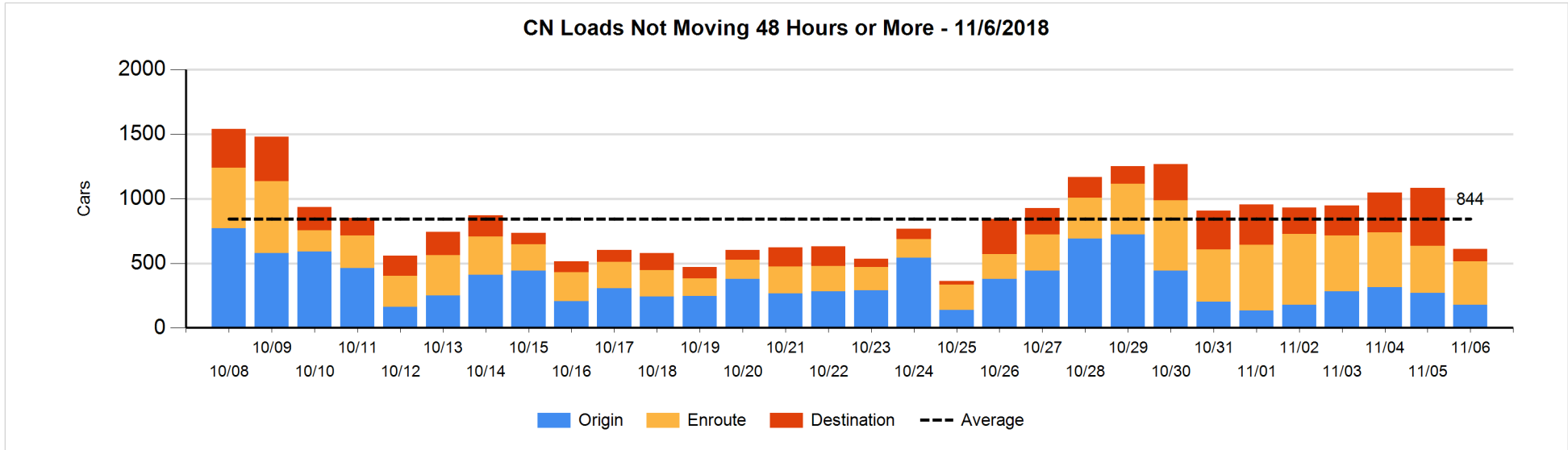


Loads Not Moving 48 Hours or More - 11/6/2018

| | E Canada | Prince Rupert | Thunder Bay | USA/MEX | Vancouver | Total |
|-----------------------------|----------|---------------|-------------|---------|-----------|-------|
| CN | | | | | | |
| Origin | | 121 | | 2 | 54 | 177 |
| Enroute | 20 | 17 | 4 | 56 | 240 | 337 |
| Destination | 4 | 1 | 27 | 7 | 59 | 98 |
| | 24 | 139 | 31 | 65 | 353 | 612 |
| CP | | | | | | |
| Origin | 1 | | 196 | 124 | 247 | 568 |
| Enroute | 15 | | 2 | 85 | 23 | 125 |
| Destination | | | 27 | 8 | 196 | 231 |
| | 16 | | 225 | 217 | 466 | 924 |
| US Rail / Short Line | | | | | | |
| Origin | | | | | | |
| Enroute | | | | 68 | | 68 |
| Destination | 4 | | | 23 | 1 | 28 |
| | 4 | | | 91 | 1 | 96 |

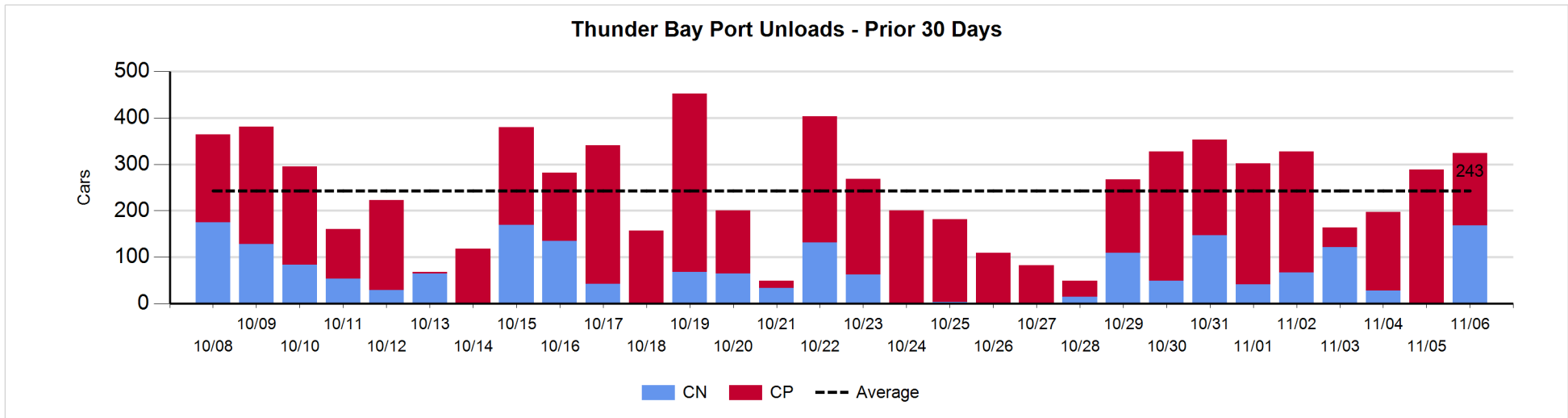
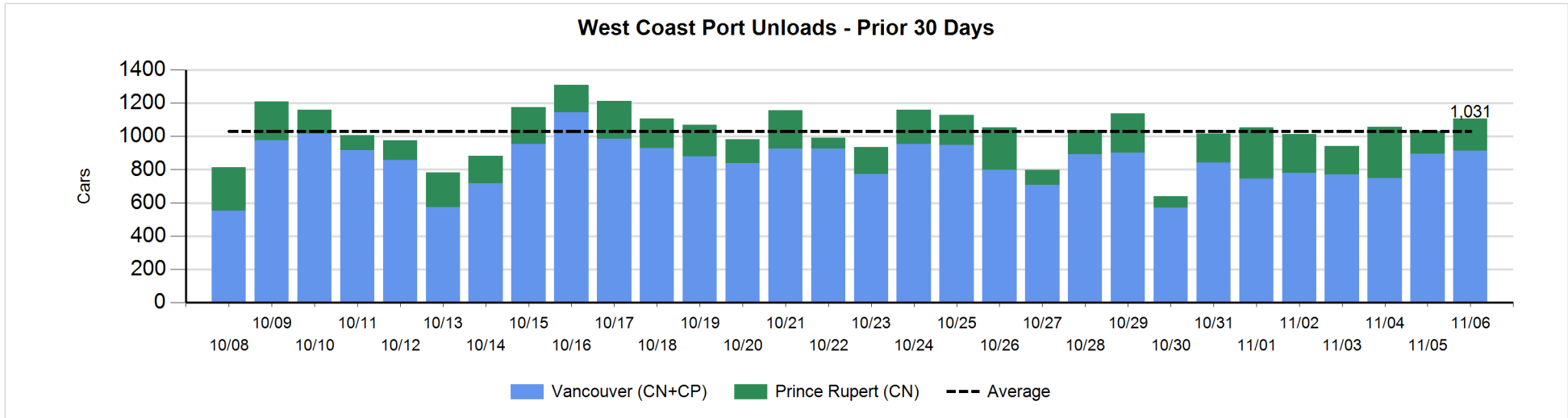
Change in Loads Not Moving 48 Hours or More - 11/6/2018

| | E Canada | Prince Rupert | Thunder Bay | USA/MEX | Vancouver | Total |
|-----------------------------|----------|---------------|-------------|---------|-----------|-------|
| CN | | | | | | |
| Origin | | 99 | | -97 | -96 | -94 |
| Enroute | -18 | -2 | 0 | 2 | -8 | -26 |
| Destination | 1 | -20 | 1 | -2 | -330 | -350 |
| | -17 | 77 | 1 | -97 | -434 | -470 |
| CP | | | | | | |
| Origin | -54 | | -112 | -50 | -28 | -244 |
| Enroute | 2 | | -2 | -27 | -2 | -29 |
| Destination | | | -83 | 8 | -67 | -142 |
| | -52 | | -197 | -69 | -97 | -415 |
| US Rail / Short Line | | | | | | |
| Origin | | | | | | |
| Enroute | | | | -23 | | -23 |
| Destination | 0 | | | -14 | -1 | -15 |
| | 0 | | | -37 | -1 | -38 |



Port Unloads - 11/6/2018

| | Prince Rupert | Vancouver | West Coast Total | Thunder Bay | Total |
|----|---------------|-----------|------------------|-------------|-------|
| CN | 193 | 426 | 619 | 168 | 787 |
| CP | | 487 | 487 | 156 | 643 |
| | 193 | 913 | 1,106 | 324 | 1,430 |



Port Terminal Status

Vancouver

Daily Activity for 11/6/2018

| | Cars Arrived | Cars Received in Interchange | Cars Delivered in Interchange | Cars Placed for Unloading | Loads on Wheels at Destination As of 11/6/2018 |
|-----|--------------|------------------------------|-------------------------------|---------------------------|--|
| CN | 133 | 124 | 201 | 388 | 786 |
| CP | 344 | 171 | 126 | 474 | 796 |
| SRY | | 32 | | 3 | 34 |

Port Unloads

| | 11/06 | 11/05 | Week To Date | Last Week |
|-----|-------|-------|--------------|-----------|
| CN | 426 | 536 | 962 | 2,382 |
| CP | 487 | 358 | 845 | 2,975 |
| SRY | 3 | 11 | 14 | 36 |

Age Profile of Loaded Cars Waiting Placement for Unloading

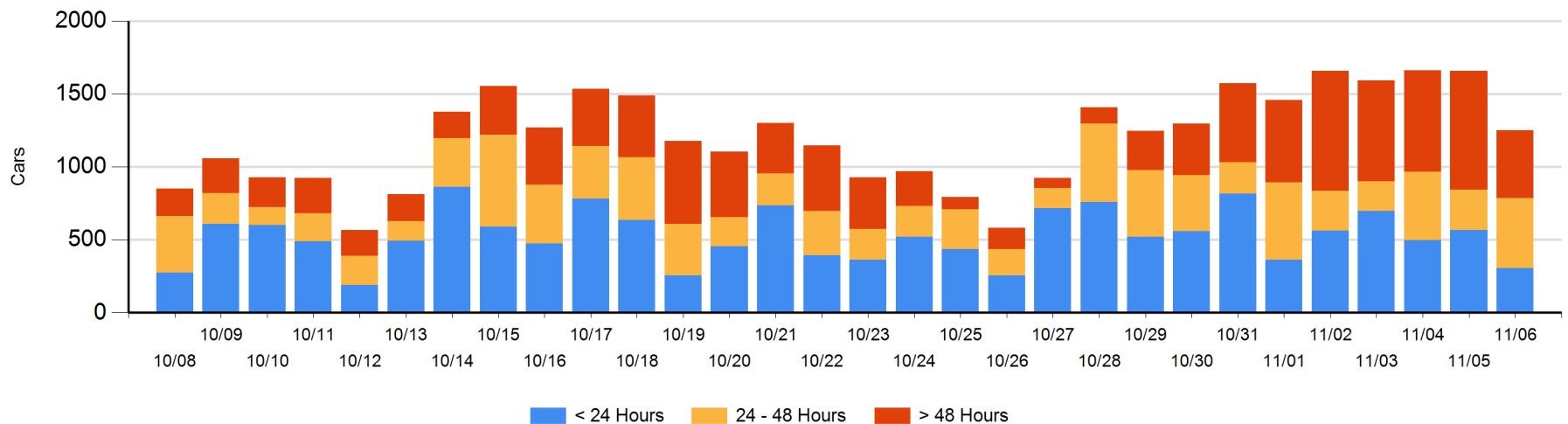
Today

| | < 24 Hrs | 24 - 48 Hrs | > 48-72 Hrs | > 72 Hrs | Total On Hand |
|-----|----------|-------------|-------------|----------|---------------|
| CN | 133 | 123 | 32 | 187 | 475 |
| CP | 174 | 355 | 25 | 223 | 777 |
| SRY | | | | | 0 |

Change in Last 24 Hours

| | < 24 Hrs | 24-48 Hrs | 48 - 72 Hrs | > 72 Hrs |
|-----|----------|-----------|-------------|----------|
| CN | -155 | -42 | -81 | -99 |
| CP | -103 | 242 | -94 | -73 |
| SRY | | | | -1 |

Loaded Cars on Hand Vancouver Waiting for Placement - Last 30 Days All Railways



Port Terminal Status

Prince Rupert

Daily Activity for 11/6/2018

| | Cars Arrived | Cars Received in Interchange | Cars Delivered in Interchange | Cars Placed for Unloading | Loads on Wheels at Destination As of 11/6/2018 |
|----|--------------|------------------------------|-------------------------------|---------------------------|--|
| CN | 363 | | | 364 | 237 |

Port Unloads

| | 11/06 | 11/05 | Week To Date | Last Week |
|----|-------|-------|--------------|-----------|
| CN | 193 | 137 | 330 | 1,502 |

Age Profile of Loaded Cars Waiting Placement for Unloading

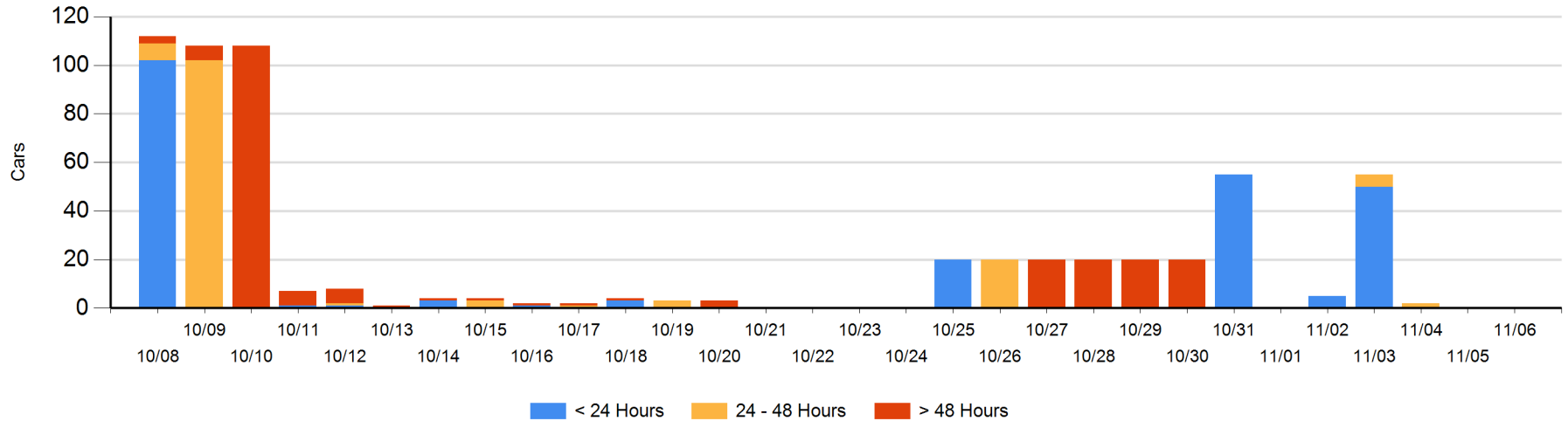
Today

| | < 24 Hrs | 24 - 48 Hrs | > 48-72 Hrs | > 72 Hrs | Total On Hand |
|----|----------|-------------|-------------|----------|---------------|
| CN | | | | | 0 |

Change in Last 24 Hours

| | < 24 Hrs | 24-48 Hrs | 48 - 72 Hrs | > 72 Hrs |
|----|----------|-----------|-------------|----------|
| CN | | | | |

Loaded Cars on Hand Prince Rupert Waiting for Placement - Last 30 Days All Railways



Port Terminal Status

Thunder Bay

Daily Activity for 11/6/2018

| | Cars Arrived | Cars Received in Interchange | Cars Delivered in Interchange | Cars Placed for Unloading | Loads on Wheels at Destination As of 11/6/2018 |
|----|--------------|------------------------------|-------------------------------|---------------------------|--|
| CN | 107 | | | 94 | 186 |
| CP | 206 | | | 151 | 371 |

Port Unloads

| | 11/06 | 11/05 | Week To Date | Last Week |
|----|-------|-------|--------------|-----------|
| CN | 168 | | 168 | 562 |
| CP | 156 | 289 | 445 | 1,375 |

Age Profile of Loaded Cars Waiting Placement for Unloading

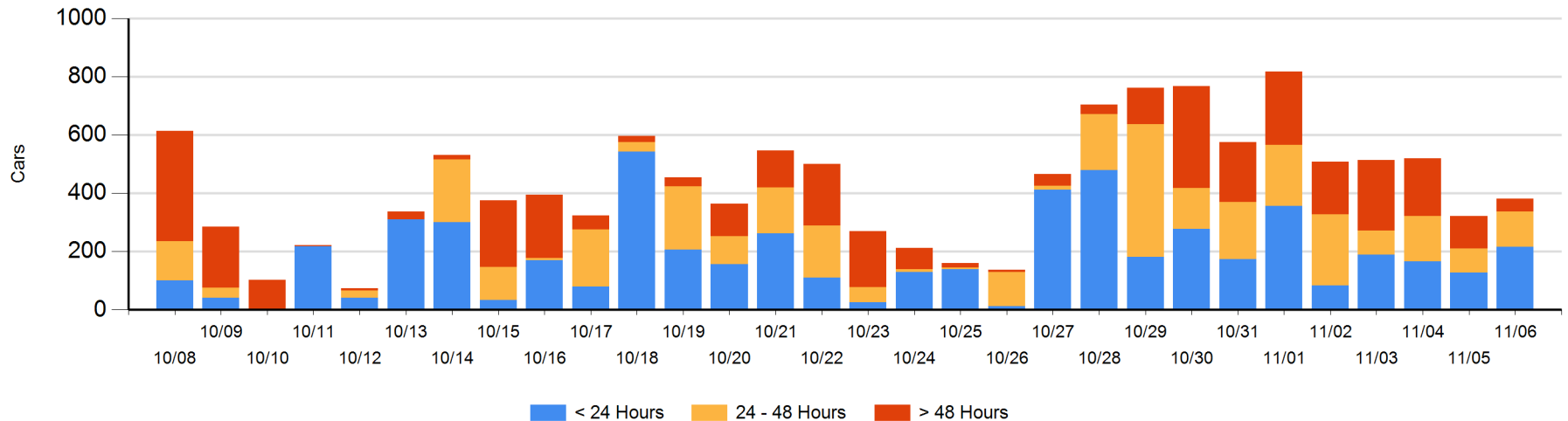
Today

| | < 24 Hrs | 24 - 48 Hrs | > 48-72 Hrs | > 72 Hrs | Total On Hand |
|----|----------|-------------|-------------|----------|---------------|
| CN | 13 | | | 22 | 35 |
| CP | 203 | 122 | | 21 | 346 |

Change in Last 24 Hours

| | < 24 Hrs | 24-48 Hrs | 48 - 72 Hrs | > 72 Hrs |
|----|----------|-----------|-------------|----------|
| CN | 13 | | -21 | 21 |
| CP | 75 | 40 | -26 | -43 |

Loaded Cars on Hand Thunder Bay Waiting for Placement - Last 30 Days All Railways



Measurement Definitions

| | |
|---------------------------------|---|
| Loads on Wheels | <p>Count of loaded rail cars including all rail cars that have been released loaded at origin and have not been reported by the railway as unloaded at destination.</p> <p>Counts include all rail cars (hopper cars and boxcars) moving within a pipeline.</p> |
| Loads Not Moving | <p>Loaded rail cars for which the railways have not reported a movement event for 48 hours or more whether the rail car is at origin, enroute or at destination.</p> |
| Port Unloads | <p>Count of rail cars reported by railways as unloaded at the western port destinations of Vancouver, Prince Rupert and Thunder Bay.</p> <p>Unload counts include all rail cars (hopper cars and boxcars) unloaded by all receivers including major port terminals, transloaders and other receivers.</p> |
| Cars Arrived | <p>Count of rail cars reported as arrived at the destination railway terminal.</p> |
| Cars Received in Interchange | <p>Count of rail cars received in interchange by each railway within a destination railway terminal. Interchange activity is tracked for the Vancouver and Thunder Bay pipelines as applicable.</p> |
| Cars Delivered in Interchange | <p>Count of rail cars delivered in interchange by each railway within a destination railway terminal. Interchange activity is tracked for the Vancouver and Thunder Bay pipelines as applicable.</p> |
| Cars Placed for Unloading | <p>Count of rail cars reported by the railways as placed loaded at the receiver's facility for unloading.</p> |
| Loads on Wheels at Destination | <p>Count of rail cars that remain under load within the destination railway terminal including rail cars that have been reported as placed for unloading but not yet reported as unloaded.</p> |
| Waiting Placement for Unloading | <p>Count of rail cars that have been reported as arrived at the destination railway terminal but not reported as placed for unloading by the railway.</p> <p>For the Ports of Vancouver, Prince Rupert and Thunder Bay the count of rail cars waiting placement for unloading is categorized by age – i.e. the elapsed time from arrival at destination to the current report date.</p> |