

SPEED READ

- Loads on wheels decreased marginally overnight, reflecting lower CP volumes offset by a slight increase in CN volumes. On a net basis, volumes decreased due to lower volumes across all corridors other than Thunder Bay.
- Network fluidity deteriorated overnight, led by a decline in idle car counts on CN by 25% (-222) offset by an increase in idle car counts on CP by 21% (+235). The total count of cars for 4+ days on both railways declined 26% (-268) overnight - presently at 747 cars.
- Four days in Week 15 unloads now ahead of prior week's performance by 450 unloads, reflecting an improvement in week over week performance at Vancouver and Prince Rupert offset by lower unloads at Thunder Bay.

Loads on Wheels

- Loads on wheels decreased for the third consecutive day, down 1% (-152) overnight, due to lower volumes on CP offset by higher traffic on CN - combined total at 10,862 and 5% below the trailing 30-day average.
- On a net basis, the decline in loads on wheels reflects reduced volumes across all corridors other than Thunder Bay.
- CN volumes increased marginally by 1% (+77) overnight, with higher traffic in the Thunder Bay, Vancouver and E. Canada corridors offset by reduced traffic in the USA/MEX and Prince Rupert corridors. System wide CN loads on wheels presently at 5,432 and 3% below the trailing 30-day average.
- CP volumes decreased for the third consecutive day, down 3% (-164) overnight, driven by a decline in traffic across all corridors other than USA/MEX. CP system wide loads on wheels currently at 5,220 and 5% below the trailing 30-day average.
- Vancouver currently at 6,928, decreased for the third consecutive day, down 1% (-92) overnight, now 1% above the trailing 30-day average.
- The Prince Rupert pipeline now at 1,349, declined marginally by 1% (-15) overnight and have now decreased for the third consecutive day, and 4% below the trailing 30 day-average.
- Thunder Bay volumes gained 4% (+44) overnight - presently at 1,223 and 26% below the trailing 30-day average, with 77% of traffic moving on CP.

Hopper Car Rationing

- CP has rationed 8 hopper cars for week 13. CN rationed 104 hopper cars in week 14.

Loads Not Moving

- **The count of cars not moving for 48+ hours rose slightly by 1% (+13) overnight, reflecting reduced counts on CN offset by higher counts on CP. Idle car counts currently at 2,031 and 6% below the trailing 30 day-average.**
- CN
 - **The count of idle cars for 48+ hours decreased 25% (-222) overnight - currently at 671 cars.**
 - The number of cars idle for 4+ days decreased for the third consecutive day, down 40% (-119) overnight - currently at 181 cars.
 - The count of cars not moving for 7+ days declined significantly by 48% (-116) overnight - currently at 125 cars.
 - Vancouver represents 72% of all idle cars.
 - In total 30% of all idle cars are dwelling at origin locations.
- CP
 - **CP idle car counts for 48+ hours increased 21% (+235) overnight - currently at 1,360 cars.**
 - The number of cars idle for 4+ days fell 21% (-149) overnight - currently at 566 cars.
 - The number of cars idle for 7+ days declined 12% (-38) overnight - now at 282 cars.

- Vancouver accounts for 69% of all idle cars.
- In total 73% of all idle cars are dwelling at origin locations.

Port Performance

- CN and CP reported a total of 1,429 cars unloaded at the three major ports, now 12% above the trailing 30-day average. Four days in Week 15 unloads now ahead of last week's pace by 450 unloads, reflecting higher unloads at Vancouver and Prince Rupert offset by lower unloads at Thunder Bay.
- Vancouver
 - 919 unloads reported by CN and CP at the Port of Vancouver; CN - 502 and CP - 417. Four days in Week 15 unloads are tracking ahead of last week's performance by more than 450 unloads.
 - There are less than 1,700 cars on site at Vancouver with 1,000 cars arriving at the port in the last 24 hours.
 - CN and CP have 1,500 cars in British Columbia en route to Vancouver, with 400 cars at Kamloops and west, and 52% of traffic moving on CP.
- Prince Rupert
 - Prince Rupert reported 249 unloads, now ahead of last week's unloads after four days by 5 unloads.
 - Loads on wheels now above 1,000 cars - now at 1,349 cars.
 - There are more than 300 cars west of Jasper en route to Prince Rupert.
 - There are 100 cars on site at Prince Rupert with 18 cars arriving at the port in the last 24 hours. Given the structure of the pipeline, there appears to be sufficient cars available to support unloads in the next few days.
- Thunder Bay
 - 261 unloads were reported at Thunder Bay yesterday. Four days in Week 15 unloads are tracking behind last week's pace by 25 unloads.
 - There are 250 cars on site at Thunder Bay with more than 100 cars arriving at the port in the prior 24 hours.
 - There are 250 cars en route to Thunder Bay from Winnipeg and east. Cars on hand and those en route should support unloads in the next few days.

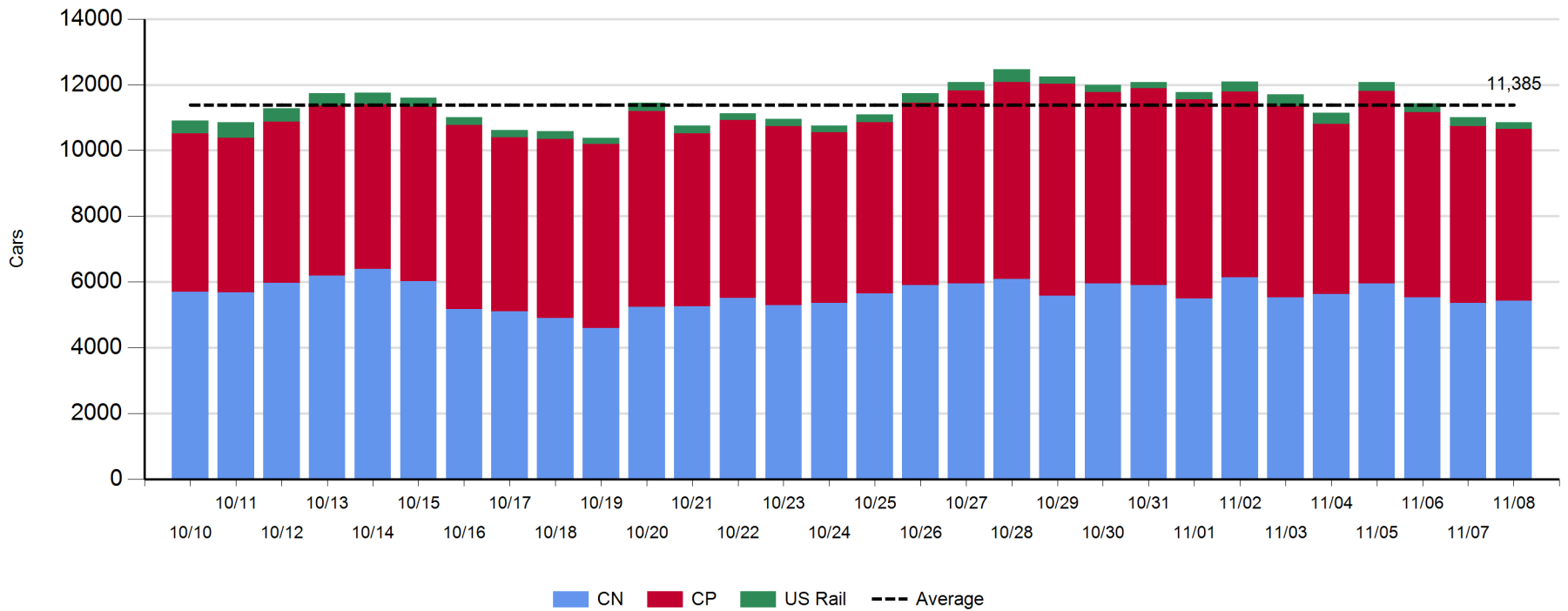
Daily Loads on Wheels - 11/8/2018

	E Canada	Prince Rupert	Thunder Bay	USA/MEX	Vancouver	Total
CN	438	1,349	287	264	3,094	5,432
CP	117		936	377	3,790	5,220
Short Line	27				44	71
US Rail				139		139
	582	1,349	1,223	780	6,928	10,862

Change in Loads on Wheels - Prior 24 Hours

	E Canada	Prince Rupert	Thunder Bay	USA/MEX	Vancouver	Total
CN	21	-15	74	-24	21	77
CP	-12		-30	0	-122	-164
Short Line	-17				9	-8
US Rail				-57		-57
	-8	-15	44	-81	-92	-152

Loads on Wheels - Prior 30 Days

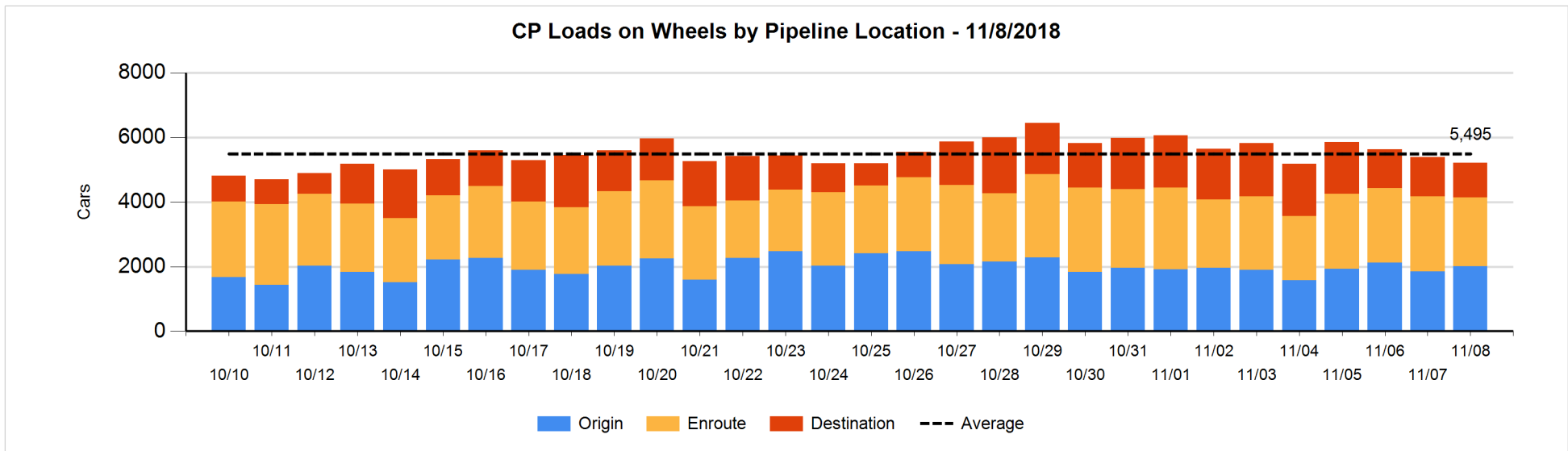
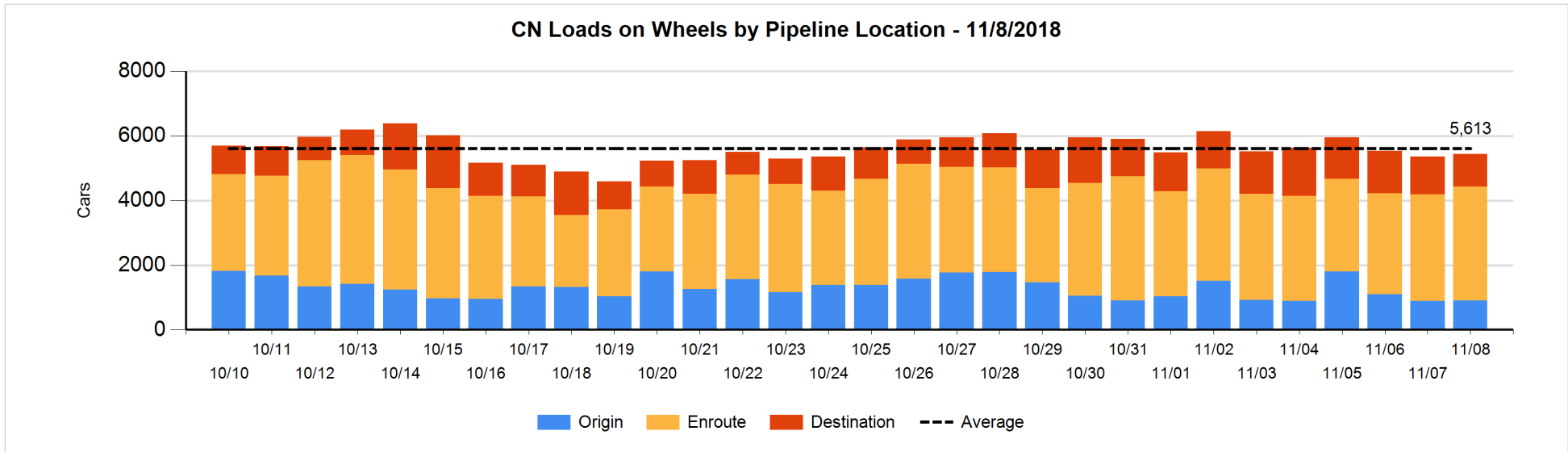


Daily Loads on Wheels By Pipeline Location - 11/8/2018

	E Canada	Prince Rupert	Thunder Bay	USA/MEX	Vancouver	Total
CN						
Origin	52	367		5	487	911
Enroute	327	891	206	235	1,857	3,516
Destination	59	91	81	24	750	1,005
	438	1,349	287	264	3,094	5,432
CP						
Origin	30		499	144	1,342	2,015
Enroute	86		261	227	1,555	2,129
Destination	1		176	6	893	1,076
	117		936	377	3,790	5,220
US Rail / Short Line						
Origin						
Enroute	5			83		88
Destination	22			56	44	122
	27			139	44	210

Change in Daily Loads on Wheels By Pipeline Location - Prior 24 Hours

	E Canada	Prince Rupert	Thunder Bay	USA/MEX	Vancouver	Total
CN						
Origin	-51	83		-14	0	18
Enroute	70	131	88	-5	-68	216
Destination	2	-229	-14	-5	89	-157
	21	-15	74	-24	21	77
CP						
Origin	0		56	20	96	172
Enroute	-12		41	-12	-213	-196
Destination	0		-127	-8	-5	-140
	-12		-30	0	-122	-164
US Rail / Short Line						
Origin						
Enroute	1			-23		-22
Destination	-18			-34	9	-43
	-17			-57	9	-65

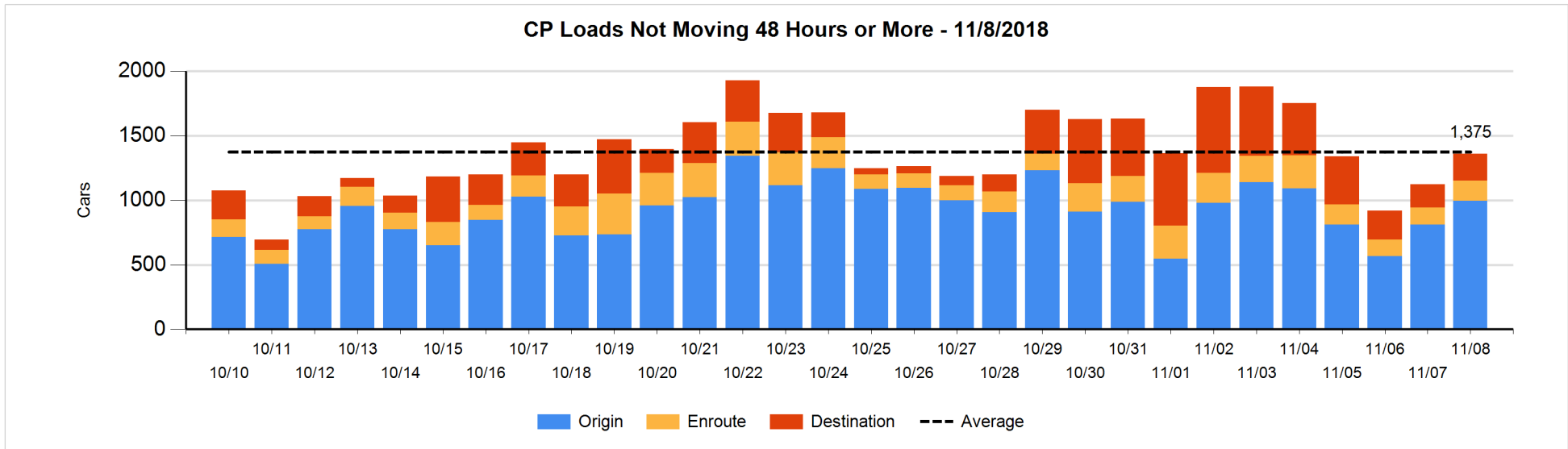
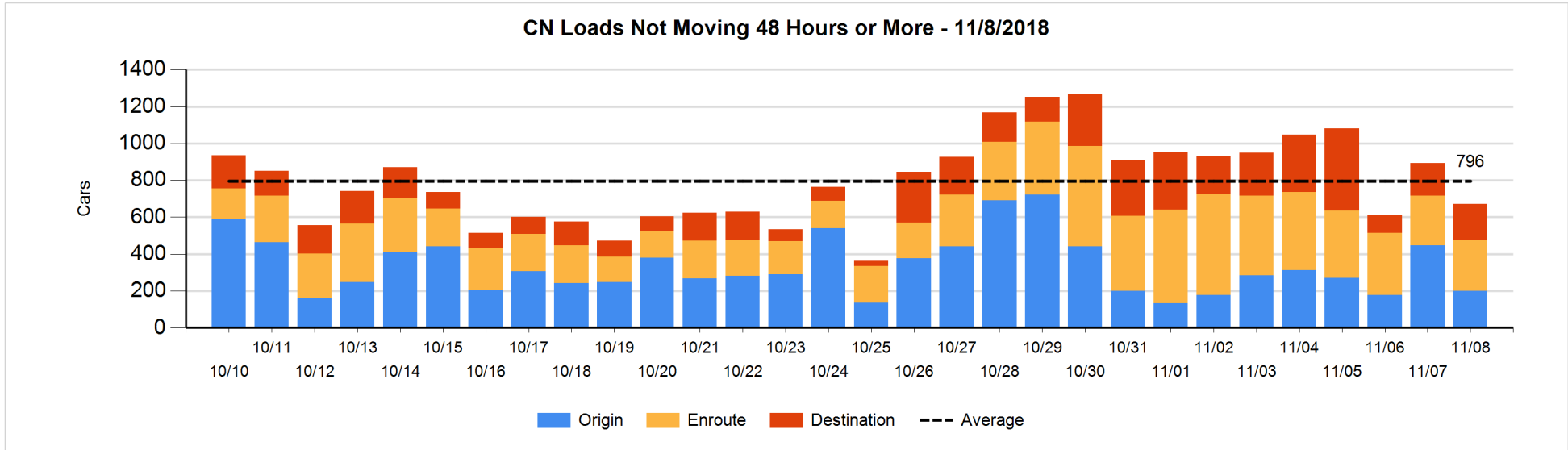


Loads Not Moving 48 Hours or More - 11/8/2018

	E Canada	Prince Rupert	Thunder Bay	USA/MEX	Vancouver	Total
CN						
Origin	7	34		2	157	200
Enroute	27	6		53	188	274
Destination	23	2	31	6	135	197
	57	42	31	61	480	671
CP						
Origin	5		152	114	724	995
Enroute	15		1	105	37	158
Destination	1		30		176	207
	21		183	219	937	1360
US Rail / Short Line						
Origin						
Enroute	2			22		24
Destination				35	4	39
	2			57	4	63

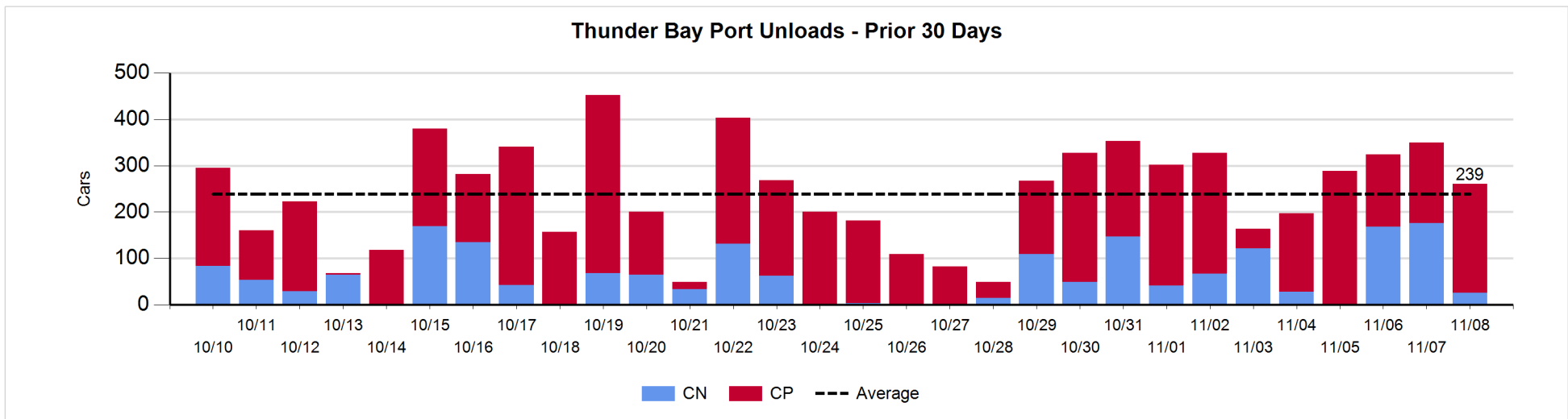
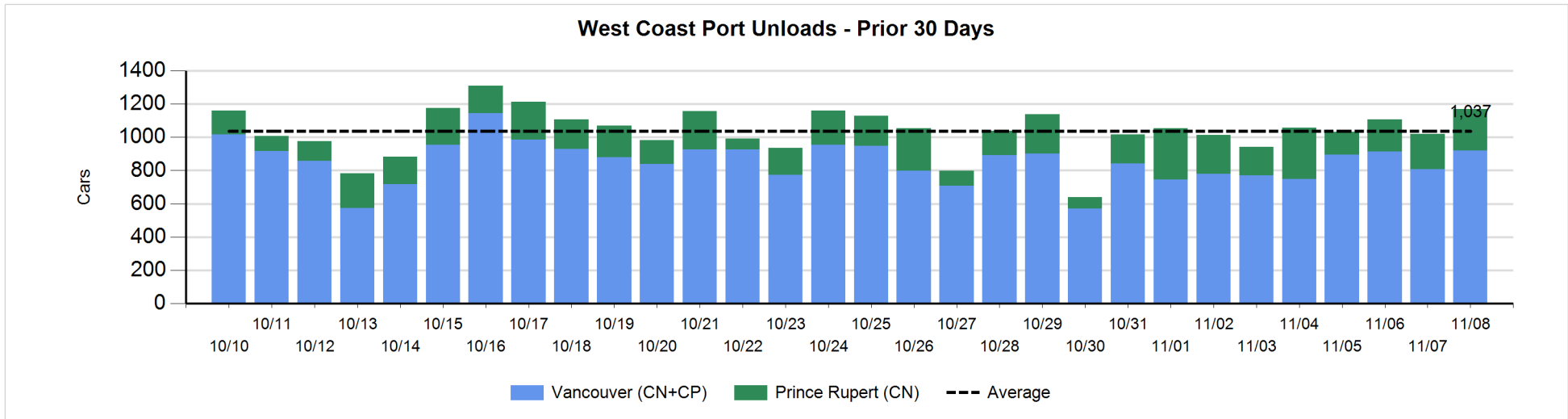
Change in Loads Not Moving 48 Hours or More - 11/8/2018

	E Canada	Prince Rupert	Thunder Bay	USA/MEX	Vancouver	Total
CN						
Origin	7	-100		-4	-150	-247
Enroute	-18	-12		7	27	4
Destination	-10	1	-6	2	34	21
	-21	-111	-6	5	-89	-222
CP						
Origin	0		-147	-4	337	186
Enroute	0		-1	18	5	22
Destination	0		29	-10	8	27
	0		-119	4	350	235
US Rail / Short Line						
Origin						
Enroute	2			-35		-33
Destination				-12	2	-10
	2			-47	2	-43



Port Unloads - 11/8/2018

	Prince Rupert	Vancouver	West Coast Total	Thunder Bay	Total
CN	249	502	751	26	777
CP		417	417	235	652
	249	919	1,168	261	1,429



Port Terminal Status

Vancouver

Daily Activity for 11/8/2018

	Cars Arrived	Cars Received in Interchange	Cars Delivered in Interchange	Cars Placed for Unloading	Loads on Wheels at Destination As of 11/8/2018
CN	522	111	107	368	750
CP	485	99	116	382	893
SRY		13		15	44

Port Unloads

	11/08	11/07	Week To Date	Last Week
CN	502	356	1,820	2,382
CP	417	452	1,714	2,975
SRY	8	3	25	36

Age Profile of Loaded Cars Waiting Placement for Unloading

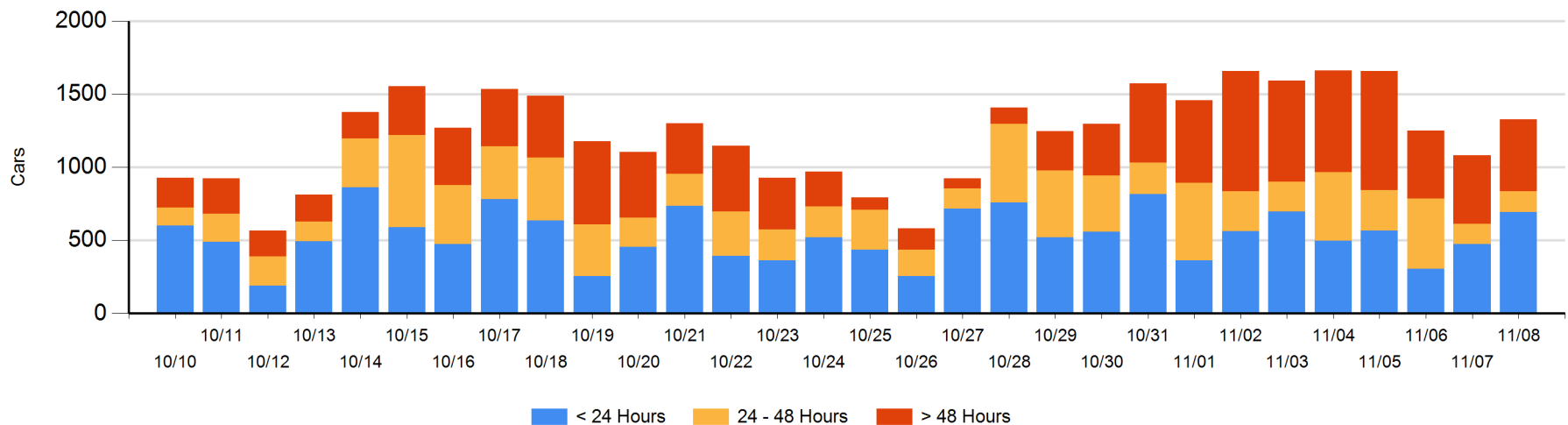
Today

	< 24 Hrs	24 - 48 Hrs	> 48-72 Hrs	> 72 Hrs	Total On Hand
CN	368	4	82	42	496
CP	326	138	26	340	830
SRY					0

Change in Last 24 Hours

	< 24 Hrs	24-48 Hrs	48 - 72 Hrs	> 72 Hrs
CN	230	-108	56	-13
CP	-9	110	-177	156
SRY				

Loaded Cars on Hand Vancouver Waiting for Placement - Last 30 Days All Railways



Port Terminal Status

Prince Rupert

Daily Activity for 11/8/2018

	Cars Arrived	Cars Received in Interchange	Cars Delivered in Interchange	Cars Placed for Unloading	Loads on Wheels at Destination As of 11/8/2018
CN	18			11	91

Port Unloads

	11/08	11/07	Week To Date	Last Week
CN	249	213	792	1,502

Age Profile of Loaded Cars Waiting Placement for Unloading

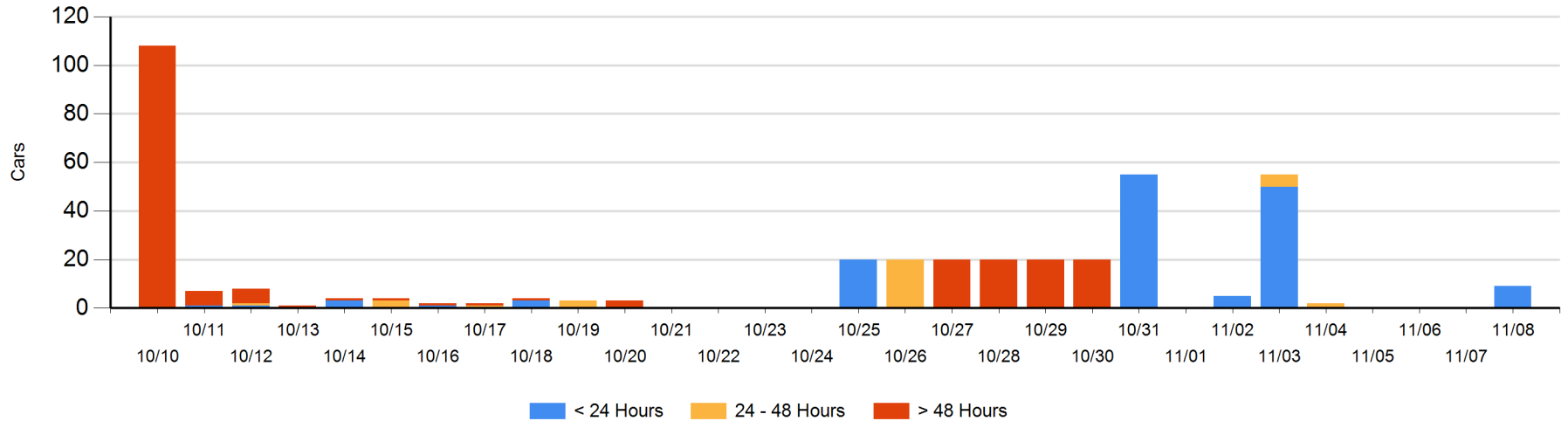
Today

	< 24 Hrs	24 - 48 Hrs	> 48-72 Hrs	> 72 Hrs	Total On Hand
CN	9				9

Change in Last 24 Hours

	< 24 Hrs	24-48 Hrs	48 - 72 Hrs	> 72 Hrs
CN	9			

Loaded Cars on Hand Prince Rupert Waiting for Placement - Last 30 Days All Railways



Port Terminal Status

Thunder Bay

Daily Activity for 11/8/2018

	Cars Arrived	Cars Received in Interchange	Cars Delivered in Interchange	Cars Placed for Unloading	Loads on Wheels at Destination As of 11/8/2018
CN	12			28	81
CP	107			118	176

Port Unloads

	11/08	11/07	Week To Date	Last Week
CN	26	176	370	562
CP	235	174	854	1,375

Age Profile of Loaded Cars Waiting Placement for Unloading

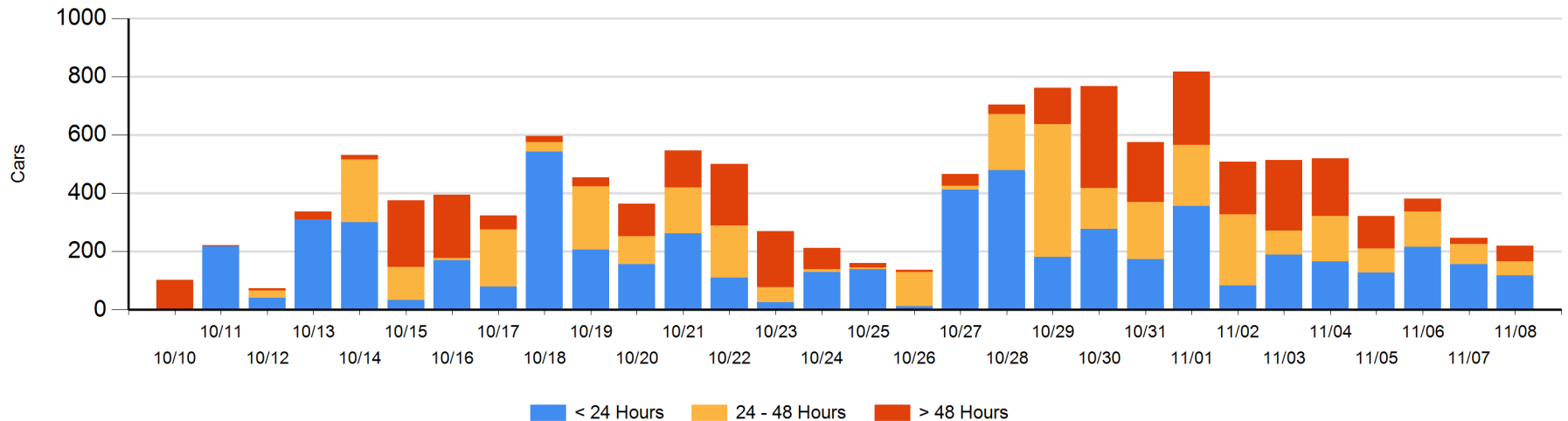
Today

	< 24 Hrs	24 - 48 Hrs	> 48-72 Hrs	> 72 Hrs	Total On Hand
CN	12	17	2	22	53
CP	107	31	29		167

Change in Last 24 Hours

	< 24 Hrs	24-48 Hrs	48 - 72 Hrs	> 72 Hrs
CN	-33	15	2	0
CP	-5	-35	29	

Loaded Cars on Hand Thunder Bay Waiting for Placement - Last 30 Days All Railways



Measurement Definitions

Loads on Wheels	<p>Count of loaded rail cars including all rail cars that have been released loaded at origin and have not been reported by the railway as unloaded at destination.</p> <p>Counts include all rail cars (hopper cars and boxcars) moving within a pipeline.</p>
Loads Not Moving	<p>Loaded rail cars for which the railways have not reported a movement event for 48 hours or more whether the rail car is at origin, enroute or at destination.</p>
Port Unloads	<p>Count of rail cars reported by railways as unloaded at the western port destinations of Vancouver, Prince Rupert and Thunder Bay.</p> <p>Unload counts include all rail cars (hopper cars and boxcars) unloaded by all receivers including major port terminals, transloaders and other receivers.</p>
Cars Arrived	<p>Count of rail cars reported as arrived at the destination railway terminal.</p>
Cars Received in Interchange	<p>Count of rail cars received in interchange by each railway within a destination railway terminal. Interchange activity is tracked for the Vancouver and Thunder Bay pipelines as applicable.</p>
Cars Delivered in Interchange	<p>Count of rail cars delivered in interchange by each railway within a destination railway terminal. Interchange activity is tracked for the Vancouver and Thunder Bay pipelines as applicable.</p>
Cars Placed for Unloading	<p>Count of rail cars reported by the railways as placed loaded at the receiver's facility for unloading.</p>
Loads on Wheels at Destination	<p>Count of rail cars that remain under load within the destination railway terminal including rail cars that have been reported as placed for unloading but not yet reported as unloaded.</p>
Waiting Placement for Unloading	<p>Count of rail cars that have been reported as arrived at the destination railway terminal but not reported as placed for unloading by the railway.</p> <p>For the Ports of Vancouver, Prince Rupert and Thunder Bay the count of rail cars waiting placement for unloading is categorized by age – i.e. the elapsed time from arrival at destination to the current report date.</p>