

SPEED READ

- Loads on wheels increased overnight, marking an increase in both CN and CP volumes. On a net basis, volumes rose due to higher traffic in the Vancouver, Thunder Bay and USA/MEX corridors offset by lower volumes in the Prince Rupert and E. Canada corridors.
- Network fluidity improved overnight, led by a decline in idle car counts on both CN and CP by 24% (-227) and 35% (-562), respectively. The total count of cars for 4+ days on both railways rose 12% (+80) overnight - presently at 775 cars.
- Two days in Week 16 unloads now behind prior week's performance by 250 unloads, marking lower unloads at Vancouver and Thunder Bay offset by improved week over week performance at Prince Rupert.

Loads on Wheels

- Loads on wheels gained 5% (+565) overnight, due to higher traffic on both CN and CP - combined total at 11,032 and 3% below the trailing 30-day average.
- On a net basis, the rise in loads on wheels indicates higher traffic in the Vancouver, Thunder Bay and USA/MEX corridors offset by reduced volumes in the Prince Rupert and E. Canada corridors.
- CN volumes increased 6% (+357) overnight, with higher volumes in the Thunder Bay and Vancouver corridors offset by reduced volumes in the Prince Rupert, E. Canada and USA/MEX corridors. System wide CN loads on wheels presently at 5,900 and 6% above the trailing 30-day average.
- CP volumes rose 5% (+228) overnight, driven by an increase in volumes across all corridors other than Thunder Bay. CP system wide loads on wheels now at 4,760 and 14% below the trailing 30-day average.
- Vancouver presently at 6,676, rose 5% (+307) overnight, now 2% below the trailing 30-day average.
- The Prince Rupert pipeline presently at 1,349, fell 7% (-96) overnight, and 6% below the trailing 30 day-average.
- Thunder Bay volumes rose significantly by 21% (+275) overnight - presently at 1,604 and 1% above the trailing 30-day average, with 65% of traffic moving on CP.

Hopper Car Rationing

- CN rationed 104 hopper cars in week 14.

Loads Not Moving

- **The count of cars not moving for 48+ hours fell 31% (-789) overnight, marking lower counts on both CN and CP. Idle car counts presently at 1,743 and 22% below the trailing 30 day-average.**
- CN
 - **The count of idle cars for 48+ hours declined 24% (-227) overnight - now at 702 cars.**
 - The number of cars idle for 4+ days increased significantly by 49% (+89) overnight - presently at 272 cars.
 - The count of cars not moving for 7+ days decreased 24% (-29) overnight - presently at 94 cars.
 - Vancouver represents 70% of all idle cars.
 - In total 63% of all idle cars are dwelling at origin locations.
- CP
 - **CP idle car counts for 48+ hours decreased 35% (-562) overnight - now at 1,041 cars.**
 - The number of cars idle for 4+ days declined slightly by 2% (-9) overnight - presently at 503 cars.

- The number of cars idle for 7+ days gained 15% (+29) overnight - presently at 227 cars.
- Vancouver accounts for 46% of all idle cars.
- In total 65% of all idle cars are dwelling at origin locations.

Port Performance

- CN and CP reported a total of 1,194 cars unloaded at the three major ports, now 8% below the trailing 30 day-average. Two days in Week 16 unloads now behind last week's pace by 250 unloads, marking lower unloads at Vancouver and Thunder Bay offset by higher unloads at Prince Rupert.
- Vancouver
 - 682 unloads reported by CN and CP at the Port of Vancouver; CN - 241 and CP - 441. Two days in Week 16 unloads are tracking behind last week's performance by more than 300 unloads.
 - There are more than 1,300 cars on site at Vancouver with 750 cars arriving at the port in the last 24 hours.
 - CN and CP have more than 1,250 cars in British Columbia en route to Vancouver, with more than 650 cars at Kamloops and west, and 51% of traffic moving on CP.
- Prince Rupert
 - Prince Rupert reported 327 unloads, the highest seen in the last 30 days, now ahead of last week's unloads after two days by 200 unloads.
 - Loads on wheels now above 1,000 cars - presently at 1,349 cars.
 - There are 350 cars west of Jasper en route to Prince Rupert.
 - There are 4 cars on site at Prince Rupert with nearly 100 cars arriving at the port in the last 24 hours. Given the structure of the pipeline, there appears to be sufficient cars available to support unloads in the next few days.
- Thunder Bay
 - 185 unloads were reported at Thunder Bay yesterday. Two days in Week 16 unloads are tracking behind last week's pace by fewer than 150 unloads.
 - There are more than 200 cars on site at Thunder Bay with 100 cars arriving at the port in the prior 24 hours.
 - There are 100 cars en route to Thunder Bay from Winnipeg and east. Cars on hand and those en route should support unloads in the next few days.

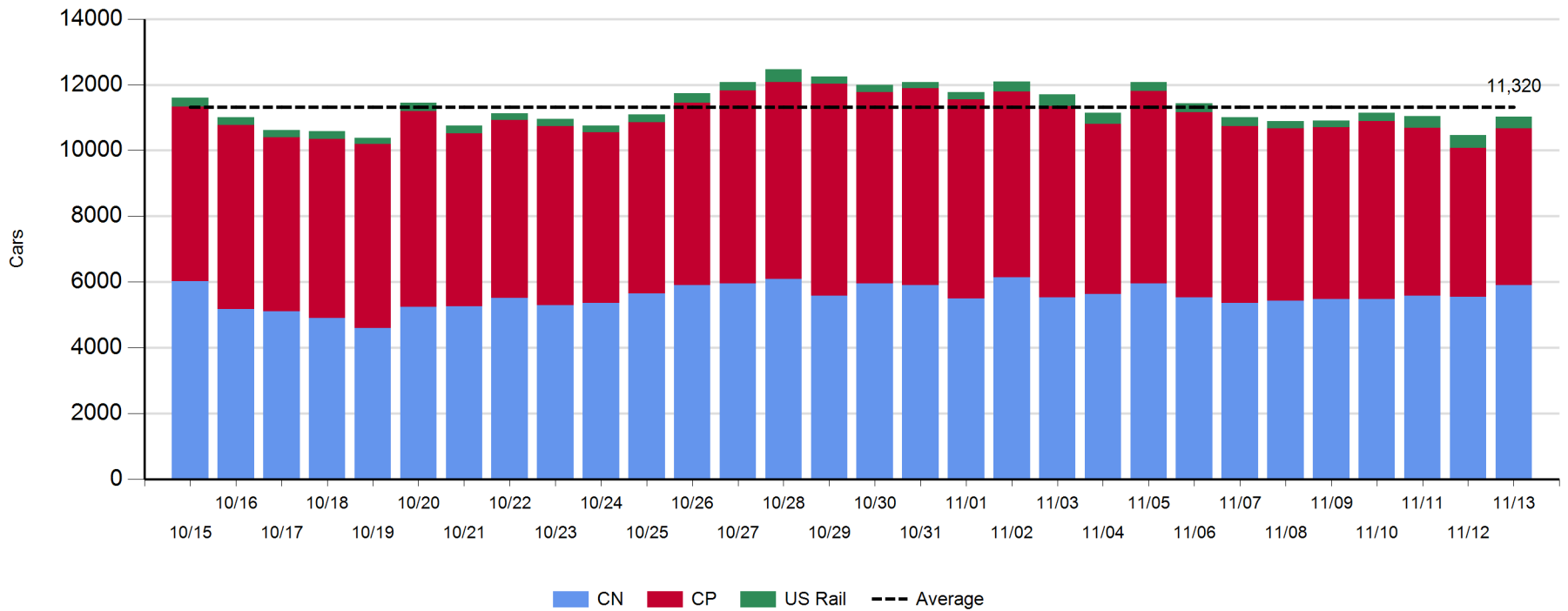
Daily Loads on Wheels - 11/13/2018

	E Canada	Prince Rupert	Thunder Bay	USA/MEX	Vancouver	Total
CN	385	1,349	558	201	3,407	5,900
CP	98		1,046	400	3,216	4,760
Short Line	30				53	83
US Rail				289		289
	513	1,349	1,604	890	6,676	11,032

Change in Loads on Wheels - Prior 24 Hours

	E Canada	Prince Rupert	Thunder Bay	USA/MEX	Vancouver	Total
CN	-21	-96	294	-15	195	357
CP	26		-19	90	131	228
Short Line	-7				-19	-26
US Rail				6		6
	-2	-96	275	81	307	565

Loads on Wheels - Prior 30 Days



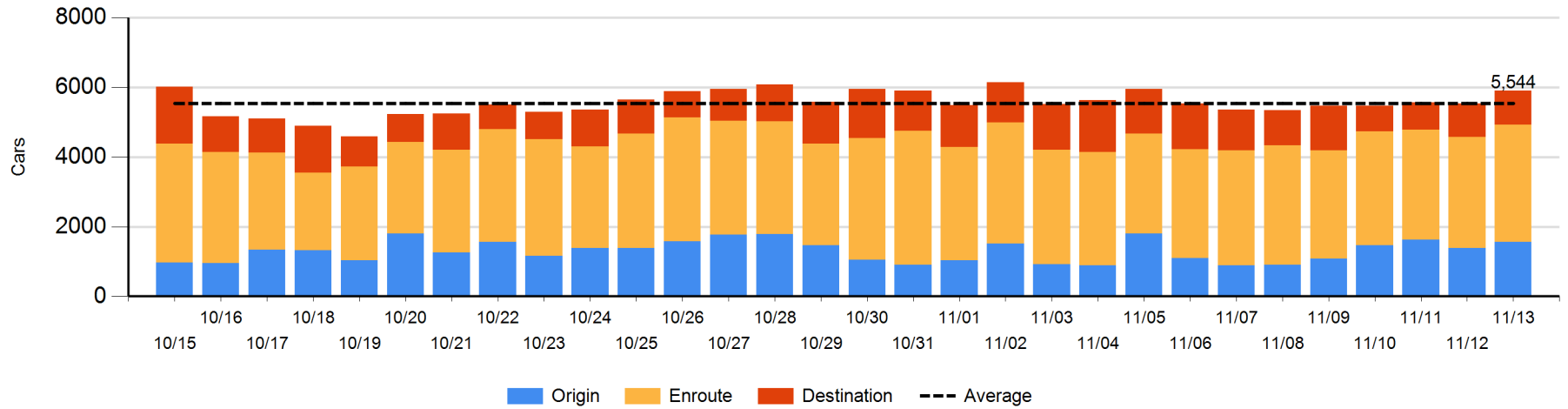
Daily Loads on Wheels By Pipeline Location - 11/13/2018

	E Canada	Prince Rupert	Thunder Bay	USA/MEX	Vancouver	Total
CN						
Origin	42	330	344	1	838	1,555
Enroute	213	1,015	99	167	1,875	3,369
Destination	130	4	115	33	694	976
	385	1,349	558	201	3,407	5,900
CP						
Origin	31		405	220	1,254	1,910
Enroute	43		542	169	1,387	2,141
Destination	24		99	11	575	709
	98		1,046	400	3,216	4,760
US Rail / Short Line						
Origin						
Enroute	20			75		95
Destination	10			214	53	277
	30			289	53	372

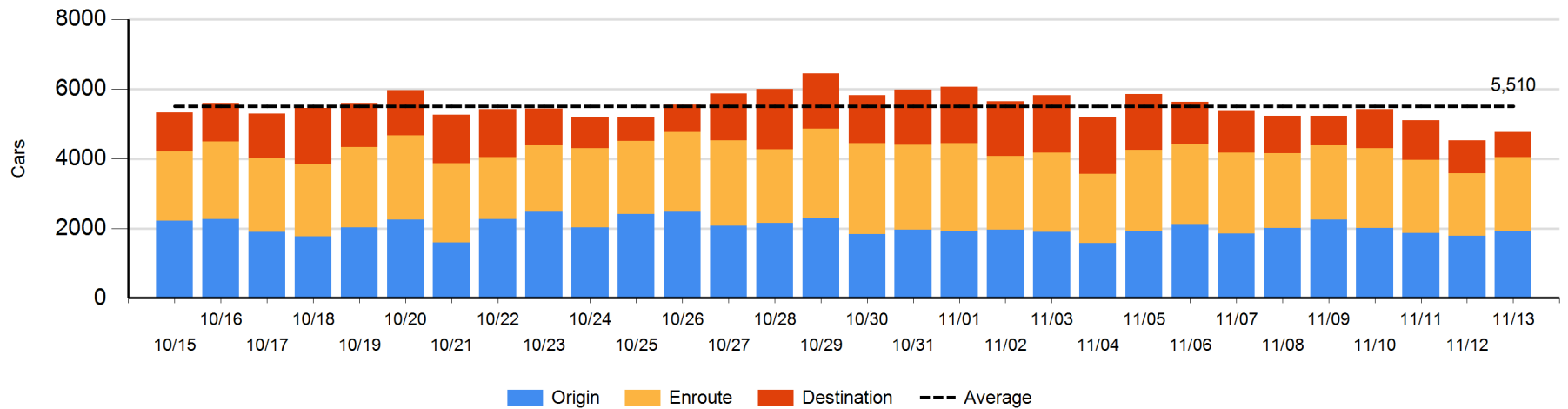
Change in Daily Loads on Wheels By Pipeline Location - Prior 24 Hours

	E Canada	Prince Rupert	Thunder Bay	USA/MEX	Vancouver	Total
CN						
Origin	-4	49	247	-49	-68	175
Enroute	-87	94	46	48	73	174
Destination	70	-239	1	-14	190	8
	-21	-96	294	-15	195	357
CP						
Origin	31		-181	164	115	129
Enroute	-28		254	-10	131	347
Destination	23		-92	-64	-115	-248
	26		-19	90	131	228
US Rail / Short Line						
Origin						
Enroute	-10			-14		-24
Destination	3			20	-19	4
	-7			6	-19	-20

CN Loads on Wheels by Pipeline Location - 11/13/2018



CP Loads on Wheels by Pipeline Location - 11/13/2018

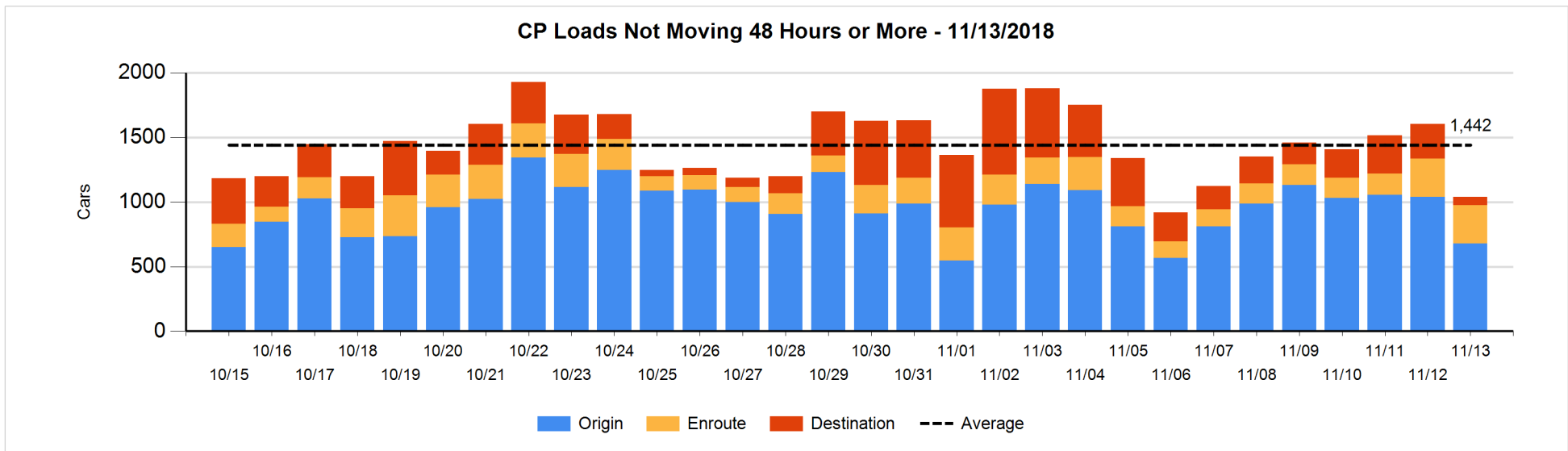
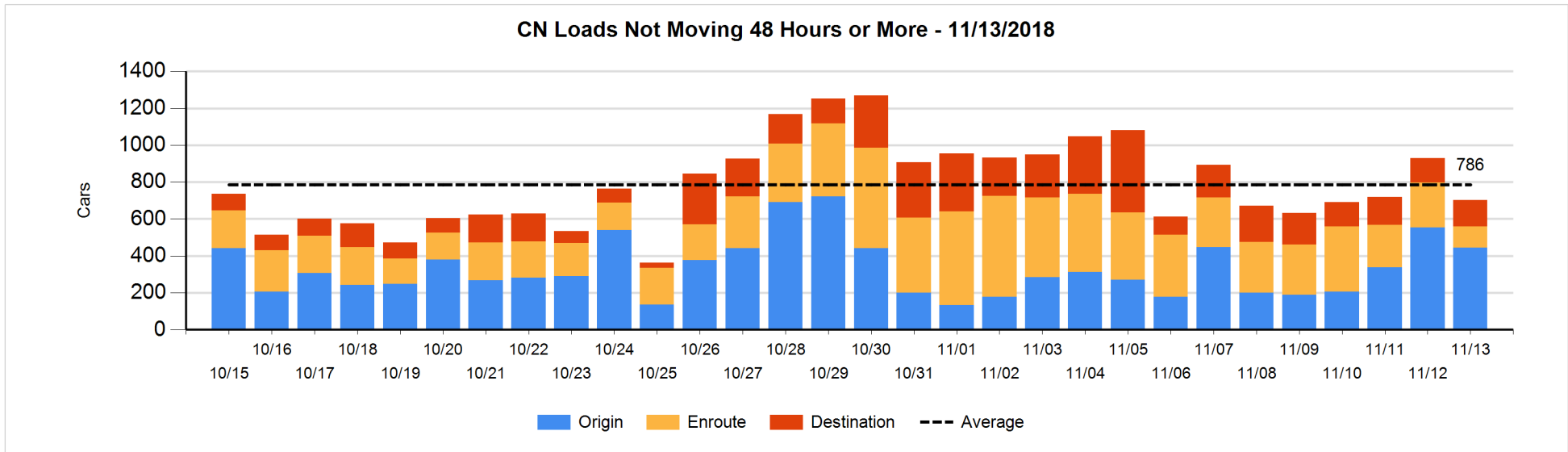


Loads Not Moving 48 Hours or More - 11/13/2018

	E Canada	Prince Rupert	Thunder Bay	USA/MEX	Vancouver	Total
CN						
Origin	39		49		357	445
Enroute	20	5		44	45	114
Destination	36		6	14	87	143
	95	5	55	58	489	702
CP						
Origin			240	56	384	680
Enroute	26		85	143	42	296
Destination	1		1	9	54	65
	27		326	208	480	1041
US Rail / Short Line						
Origin						
Enroute	13			25		38
Destination				30	36	66
	13			55	36	104

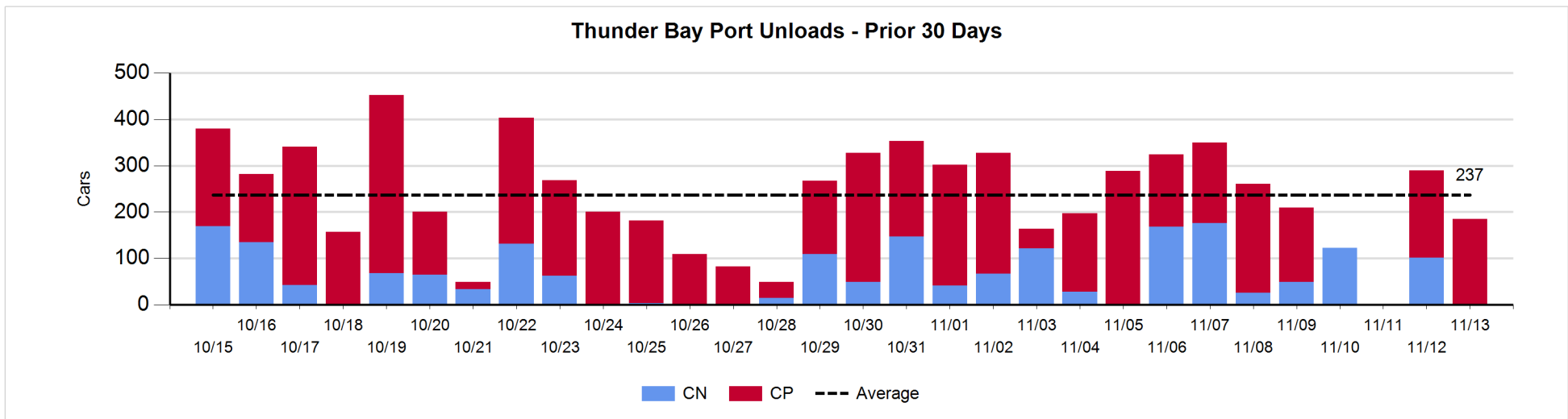
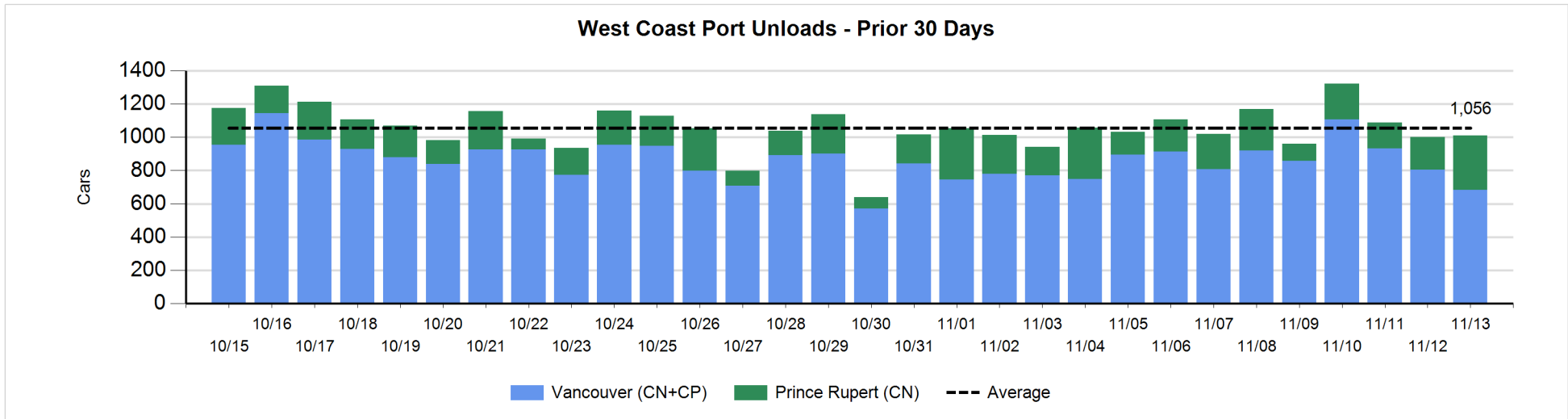
Change in Loads Not Moving 48 Hours or More - 11/13/2018

	E Canada	Prince Rupert	Thunder Bay	USA/MEX	Vancouver	Total
CN						
Origin	-4	-28	-48		-28	-108
Enroute	-4	0	-2	2	-126	-130
Destination	2	-10	-1	-1	21	11
	-6	-38	-51	1	-133	-227
CP						
Origin			-253	22	-130	-361
Enroute	-8		-18	31	-4	1
Destination	0		-99	-6	-97	-202
	-8		-370	47	-231	-562
US Rail / Short Line						
Origin						
Enroute	-10			-11		-21
Destination	-5			-4	1	-8
	-15			-15	1	-29



Port Unloads - 11/13/2018

	Prince Rupert	Vancouver	West Coast Total	Thunder Bay	Total
CN	327	241	568	1	569
CP		441	441	184	625
	327	682	1,009	185	1,194



Port Terminal Status

Vancouver

Daily Activity for 11/13/2018

	Cars Arrived	Cars Received in Interchange	Cars Delivered in Interchange	Cars Placed for Unloading	Loads on Wheels at Destination As of 11/13/2018
CN	486	139	294	403	694
CP	267	288	141	336	575
SRY		8		17	53

Port Unloads

	11/13	11/12	Week To Date	Last Week
CN	241	385	626	3,283
CP	441	420	861	3,148
SRY	14	6	20	51

Age Profile of Loaded Cars Waiting Placement for Unloading

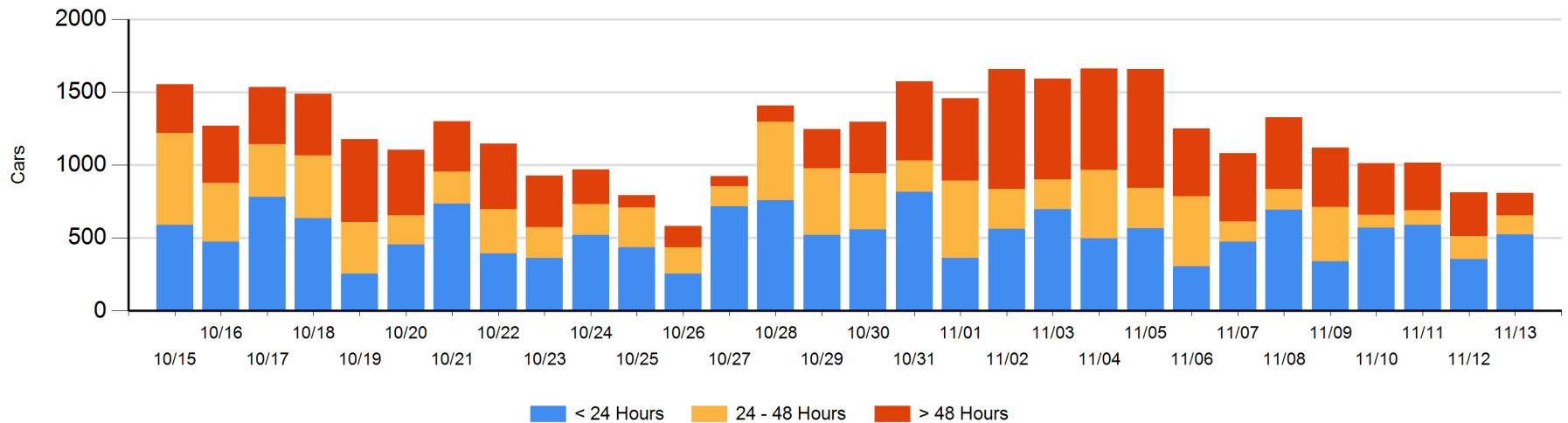
Today

	< 24 Hrs	24 - 48 Hrs	> 48-72 Hrs	> 72 Hrs	Total On Hand
CN	259	33	52	36	380
CP	266	97	21	44	428
SRY					0

Change in Last 24 Hours

	< 24 Hrs	24-48 Hrs	48 - 72 Hrs	> 72 Hrs
CN	227	-83	49	-58
CP	-58	57	-5	-133
SRY				

Loaded Cars on Hand Vancouver Waiting for Placement - Last 30 Days All Railways



Port Terminal Status

Prince Rupert

Daily Activity for 11/13/2018

	Cars Arrived	Cars Received in Interchange	Cars Delivered in Interchange	Cars Placed for Unloading	Loads on Wheels at Destination As of 11/13/2018
CN	88			88	4

Port Unloads

	11/13	11/12	Week To Date	Last Week
CN	327	196	523	1,266

Age Profile of Loaded Cars Waiting Placement for Unloading

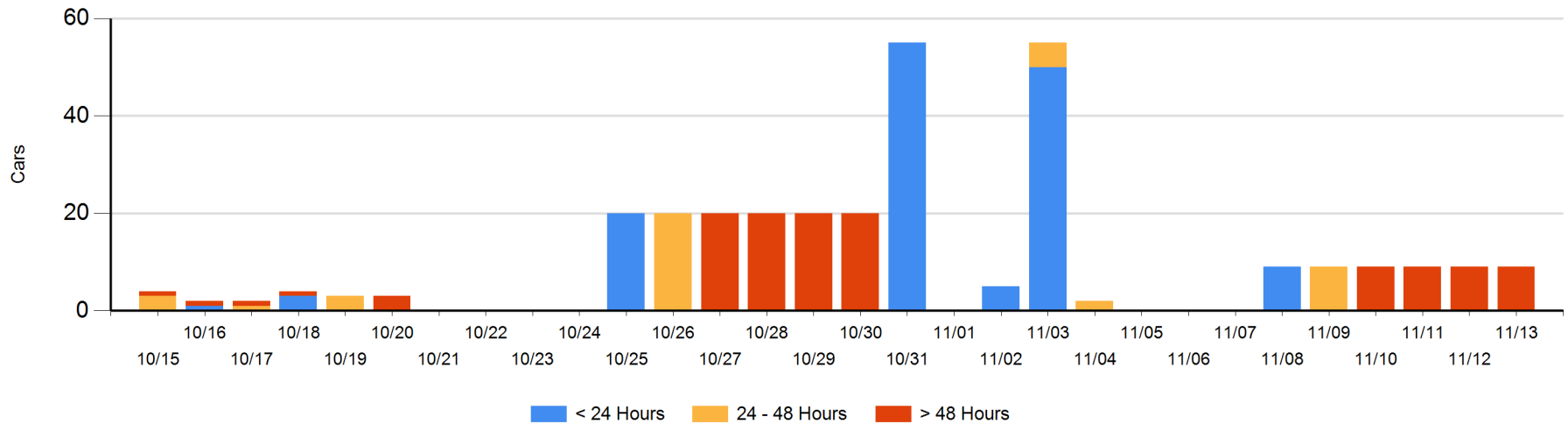
Today

	< 24 Hrs	24 - 48 Hrs	> 48-72 Hrs	> 72 Hrs	Total On Hand
CN				9	9

Change in Last 24 Hours

	< 24 Hrs	24-48 Hrs	48 - 72 Hrs	> 72 Hrs
CN				0

Loaded Cars on Hand Prince Rupert Waiting for Placement - Last 30 Days All Railways



Port Terminal Status

Thunder Bay

Daily Activity for 11/13/2018

	Cars Arrived	Cars Received in Interchange	Cars Delivered in Interchange	Cars Placed for Unloading	Loads on Wheels at Destination As of 11/13/2018
CN	3			107	115
CP	92			165	99

Port Unloads

	11/13	11/12	Week To Date	Last Week
CN	1	102	103	542
CP	184	188	372	1,015

Age Profile of Loaded Cars Waiting Placement for Unloading

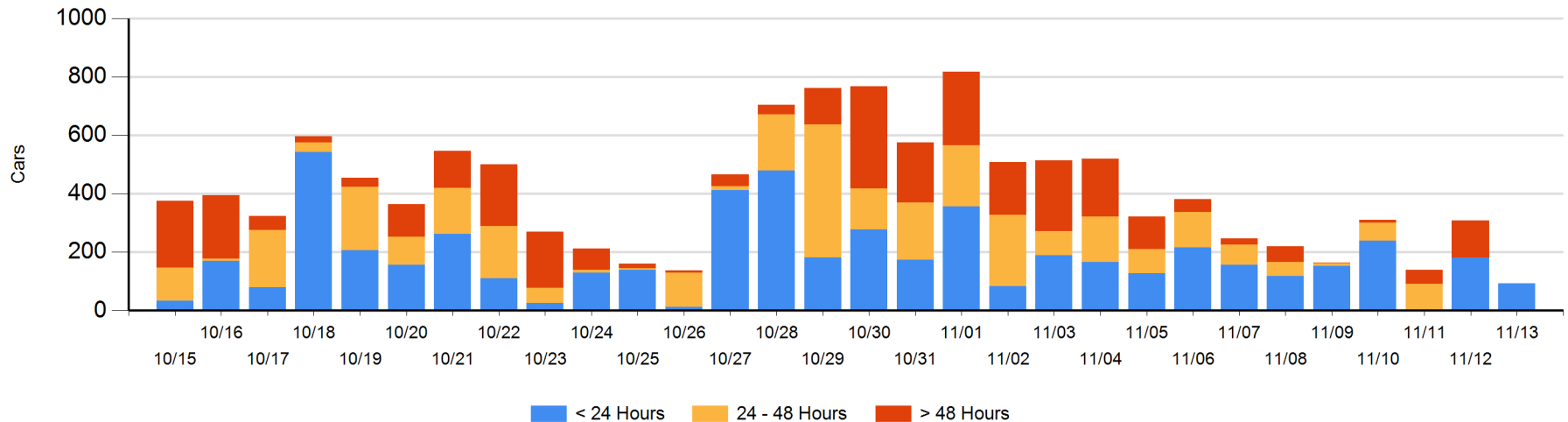
Today

	< 24 Hrs	24 - 48 Hrs	> 48-72 Hrs	> 72 Hrs	Total On Hand
CN	2				2
CP	92				92

Change in Last 24 Hours

	< 24 Hrs	24-48 Hrs	48 - 72 Hrs	> 72 Hrs
CN	-101			-3
CP	14		-87	-37

Loaded Cars on Hand Thunder Bay Waiting for Placement - Last 30 Days All Railways



Measurement Definitions

Loads on Wheels	<p>Count of loaded rail cars including all rail cars that have been released loaded at origin and have not been reported by the railway as unloaded at destination.</p> <p>Counts include all rail cars (hopper cars and boxcars) moving within a pipeline.</p>
Loads Not Moving	<p>Loaded rail cars for which the railways have not reported a movement event for 48 hours or more whether the rail car is at origin, enroute or at destination.</p>
Port Unloads	<p>Count of rail cars reported by railways as unloaded at the western port destinations of Vancouver, Prince Rupert and Thunder Bay.</p> <p>Unload counts include all rail cars (hopper cars and boxcars) unloaded by all receivers including major port terminals, transloaders and other receivers.</p>
Cars Arrived	<p>Count of rail cars reported as arrived at the destination railway terminal.</p>
Cars Received in Interchange	<p>Count of rail cars received in interchange by each railway within a destination railway terminal. Interchange activity is tracked for the Vancouver and Thunder Bay pipelines as applicable.</p>
Cars Delivered in Interchange	<p>Count of rail cars delivered in interchange by each railway within a destination railway terminal. Interchange activity is tracked for the Vancouver and Thunder Bay pipelines as applicable.</p>
Cars Placed for Unloading	<p>Count of rail cars reported by the railways as placed loaded at the receiver's facility for unloading.</p>
Loads on Wheels at Destination	<p>Count of rail cars that remain under load within the destination railway terminal including rail cars that have been reported as placed for unloading but not yet reported as unloaded.</p>
Waiting Placement for Unloading	<p>Count of rail cars that have been reported as arrived at the destination railway terminal but not reported as placed for unloading by the railway.</p> <p>For the Ports of Vancouver, Prince Rupert and Thunder Bay the count of rail cars waiting placement for unloading is categorized by age – i.e. the elapsed time from arrival at destination to the current report date.</p>