

SPEED READ

- Loads on wheels decreased overnight, reflecting a decline in both CN and CP volumes. On a net basis, volumes declined due to lower volumes in the Vancouver, Prince Rupert and Thunder Bay corridors offset by higher volumes in the USA/MEX and E. Canada corridors.
- Network fluidity deteriorated overnight, led by a rise in idle car counts on both CN and CP by 51% (+447) and 59% (+780), respectively. The total count of cars for 4+ days on both railways increased 2% (+18) overnight - now at 755 cars.
- Week 16 unloads finished behind prior week's performance by 1,150 unloads, marking lower unloads at Vancouver and Thunder Bay offset by improved week over week performance at Prince Rupert.

Loads on Wheels

- Loads on wheels fell 2% (-301) overnight, due to reduced volumes on both CN and CP - combined total at 12,270 and 7% above the trailing 30-day average.
- On a net basis, the decline in loads on wheels reflects lower volumes in the Vancouver, Prince Rupert and Thunder Bay corridors offset by higher volumes in the USA/MEX and E. Canada corridors.
- CN volumes declined slightly by 2% (-120) overnight, with reduced volumes in the Prince Rupert, Thunder Bay and USA/MEX corridors offset by higher volumes in the Vancouver and E. Canada corridors. System wide CN loads on wheels presently at 6,242 and 10% above the trailing 30-day average.
- CP volumes declined 3% (-185) overnight, driven by a decline in volumes in the Vancouver corridor offset by a rise in volumes in the USA/MEX and Thunder Bay corridors. CP system wide loads on wheels presently at 5,817 and 5% above the trailing 30-day average.
- Vancouver currently at 7,422, decreased 4% (-300) overnight, now 7% above the trailing 30-day average.
- The Prince Rupert pipeline presently at 1,237, the lowest seen in the last 30 days, decreased significantly by 10% (-142) overnight, and 15% below the trailing 30 day-average.
- Thunder Bay volumes fell 2% (-56) overnight - now at 2,308 and 39% above the trailing 30-day average, with 65% of traffic moving on CP.

Hopper Car Rationing

- CN rationed 25 hopper cars in week 15.

Loads Not Moving

- **The count of cars not moving for 48+ hours increased significantly by 56% (+1,227) overnight and have now increased for the fourth consecutive day, reflecting higher counts on both CN and CP. Idle car counts presently at 3,409, the highest seen in the last 30 days, and 50% above the trailing 30-day average.**
- CN
 - **The count of idle cars for 48+ hours surged by 51% (+447) overnight - now at 1,315 cars, the highest seen in the last 30 days.**
 - The number of cars idle for 4+ days gained significantly by 67% (+83) overnight - now at 206 cars.
 - The count of cars not moving for 7+ days fell 11% (-5) overnight - presently at 41 cars, the lowest seen in the last 30 days.
 - Vancouver represents 49% of all idle cars.
 - In total 34% of all idle cars are dwelling at origin locations.
- CP
 - **CP idle car counts for 48+ hours gained for the fifth consecutive day, up 59% (+780) overnight - currently at 2,094 cars, the highest seen in the last 30 days.**

- The number of cars idle for 4+ days declined 11% (-65) overnight - presently at 549 cars.
- The number of cars idle for 7+ days decreased 40% (-112) overnight - now at 169 cars.
- Vancouver accounts for 51% of all idle cars.
- In total 69% of all idle cars are dwelling at origin locations.

Port Performance

- CN and CP reported a total of 1,131 cars unloaded at the three major ports, now 8% below the trailing 30 day-average. Week 16 unloads finished behind last week's pace by 1,150 unloads, marking lower unloads at Vancouver and Thunder Bay offset by higher unloads at Prince Rupert.
- Vancouver
 - 886 unloads reported by CN and CP at the Port of Vancouver; CN - 386 and CP - 500. Week 16 unloads finished behind last week's performance by more than 900 unloads.
 - There are more than 1,300 cars on site at Vancouver with more than 950 cars arriving at the port in the last 24 hours.
 - CN and CP have more than 1,300 cars in British Columbia en route to Vancouver, with around 900 cars at Kamloops and west, and 50% of traffic moving on CP.
- Prince Rupert
 - Prince Rupert reported 157 unloads, ended ahead of last week's unloads by more than 100 unloads.
 - Loads on wheels now above 1,000 cars - currently at 1,237 cars.
 - There are 550 cars west of Jasper en route to Prince Rupert.
 - There are more than 100 cars on site at Prince Rupert with 100 cars arriving at the port in the last 24 hours. Given the structure of the pipeline, there appears to be sufficient cars available to support unloads in the next few days.
- Thunder Bay
 - 88 unloads were reported at Thunder Bay yesterday. Week 16 unloads ended behind last week's pace by 350 unloads.
 - There are around 1,000 cars on site at Thunder Bay with more than 200 cars arriving at the port in the prior 24 hours.
 - There are 250 cars en route to Thunder Bay from Winnipeg and east. Cars on hand and those en route should support unloads in the next few days.

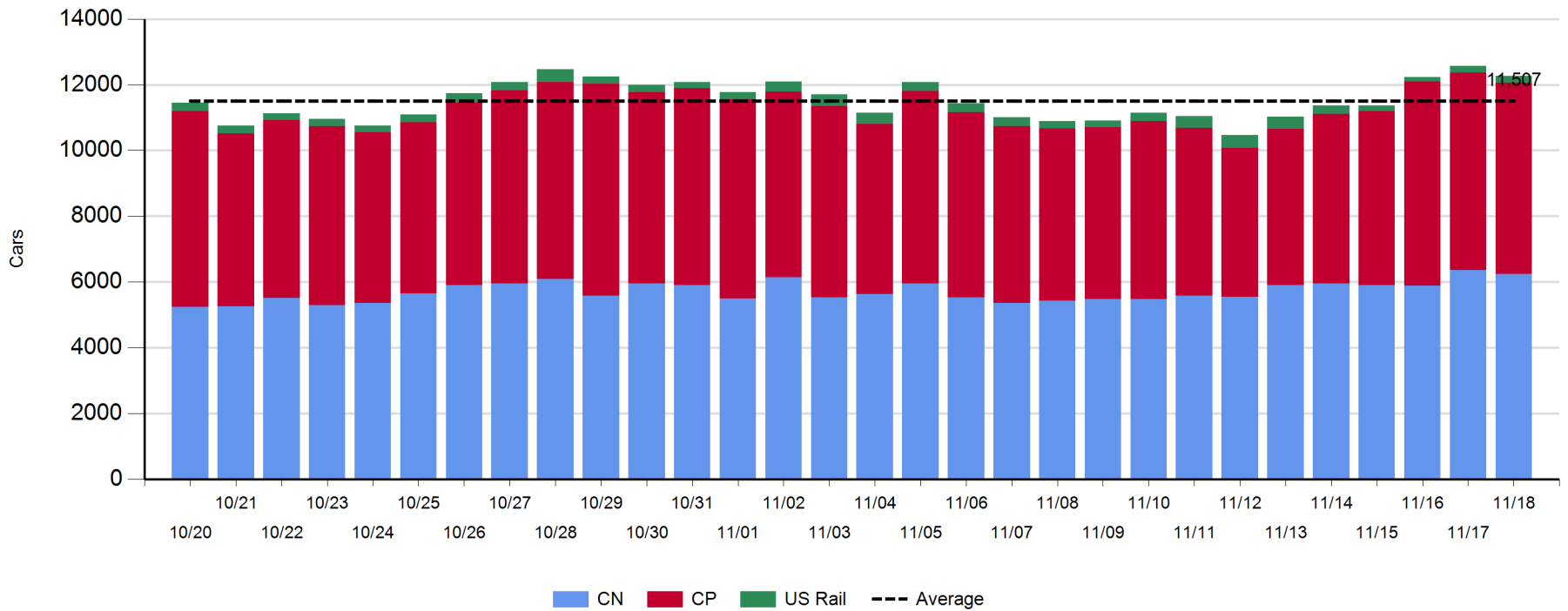
Daily Loads on Wheels - 11/18/2018

	E Canada	Prince Rupert	Thunder Bay	USA/MEX	Vancouver	Total
CN	294	1,237	809	153	3,749	6,242
CP	146		1,499	578	3,594	5,817
Short Line	1				79	80
US Rail				131		131
	441	1,237	2,308	862	7,422	12,270

Change in Loads on Wheels - Prior 24 Hours

	E Canada	Prince Rupert	Thunder Bay	USA/MEX	Vancouver	Total
CN	8	-142	-88	-4	106	-120
CP	0		32	202	-419	-185
Short Line	0				13	13
US Rail				-9		-9
	8	-142	-56	189	-300	-301

Loads on Wheels - Prior 30 Days

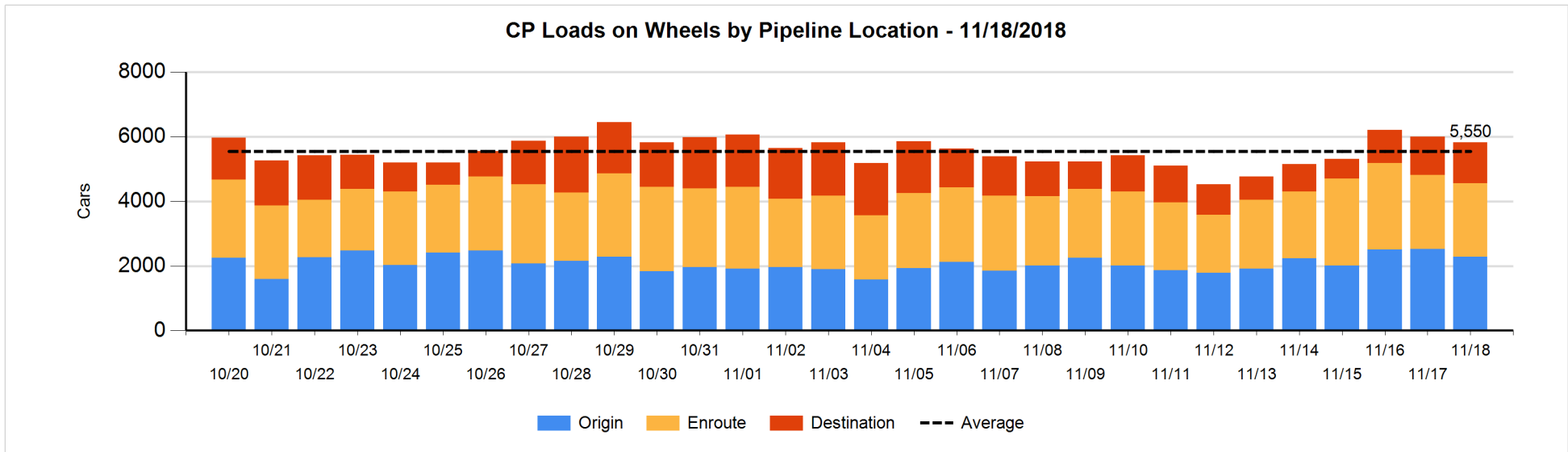
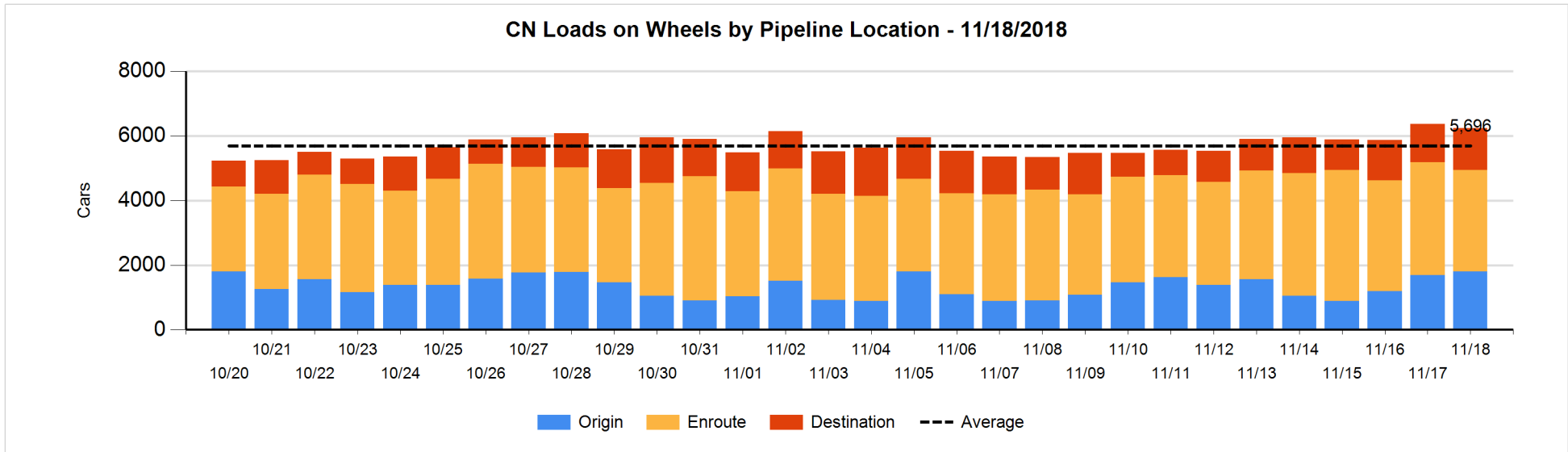


Daily Loads on Wheels By Pipeline Location - 11/18/2018

	E Canada	Prince Rupert	Thunder Bay	USA/MEX	Vancouver	Total
CN						
Origin	38	387	197	10	1,164	1,796
Enroute	125	738	355	109	1,815	3,142
Destination	131	112	257	34	770	1,304
	294	1,237	809	153	3,749	6,242
CP						
Origin	96		559	336	1,291	2,282
Enroute	50		215	194	1,823	2,282
Destination			725	48	480	1,253
	146		1,499	578	3,594	5,817
US Rail / Short Line						
Origin						
Enroute				77		77
Destination	1			54	79	134
	1			131	79	211

Change in Daily Loads on Wheels By Pipeline Location - Prior 24 Hours

	E Canada	Prince Rupert	Thunder Bay	USA/MEX	Vancouver	Total
CN						
Origin	24	-51	-50	-6	191	108
Enroute	-77	-37	50	6	-302	-360
Destination	61	-54	-88	-4	217	132
	8	-142	-88	-4	106	-120
CP						
Origin	-1		-98	195	-330	-234
Enroute	1		-89	7	64	-17
Destination			219	0	-153	66
	0		32	202	-419	-185
US Rail / Short Line						
Origin						
Enroute				1		1
Destination	0			-10	13	3
	0			-9	13	4

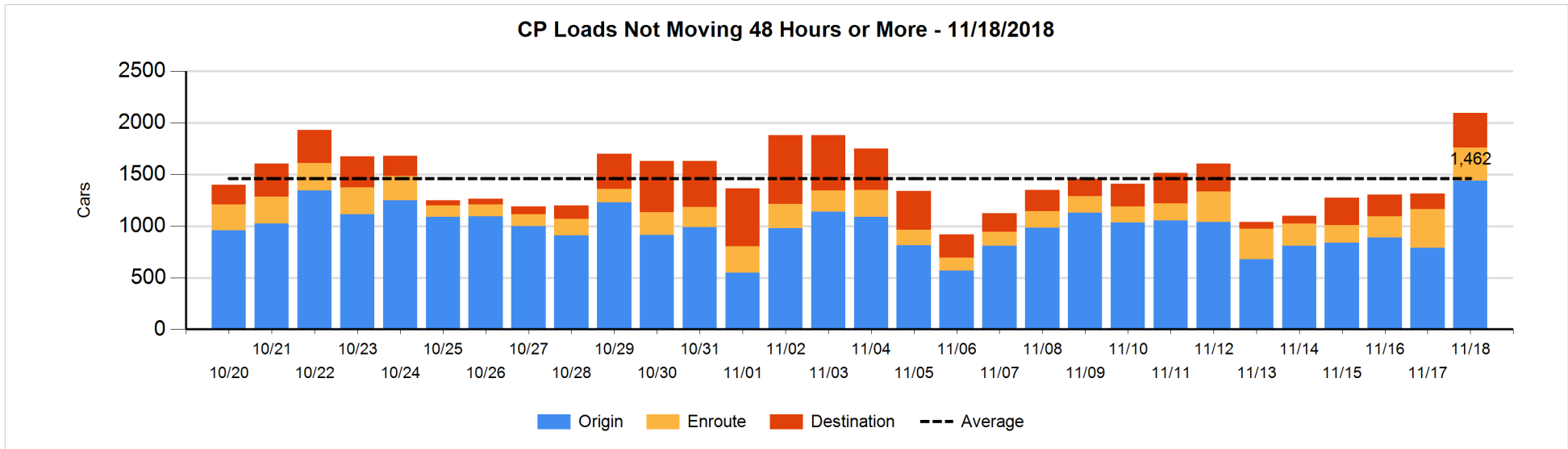
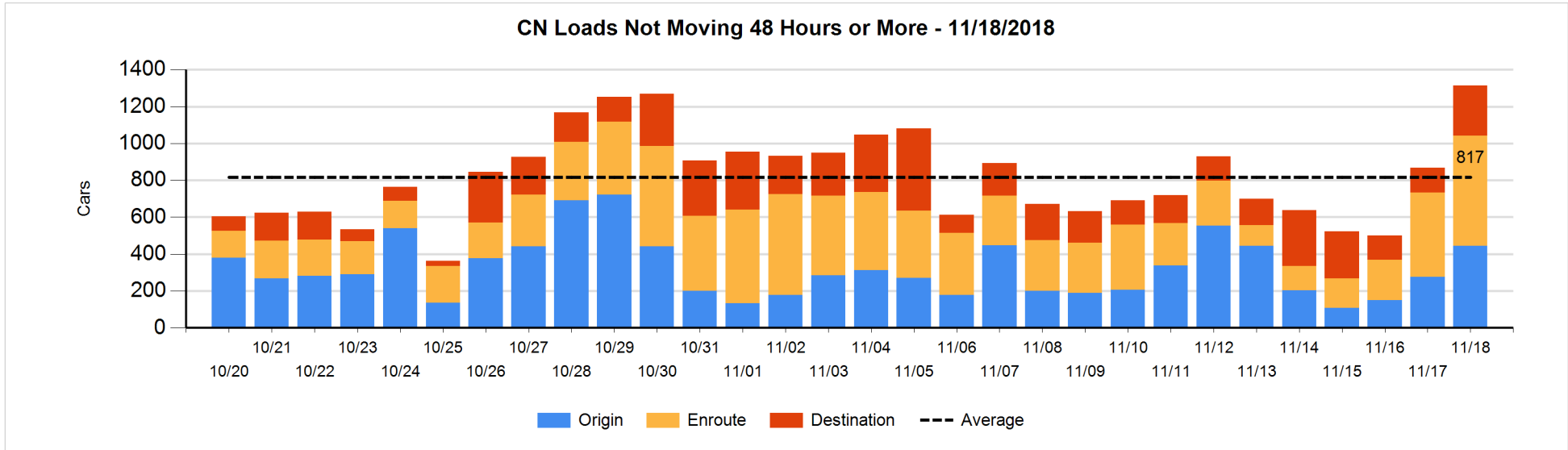


Loads Not Moving 48 Hours or More - 11/18/2018

	E Canada	Prince Rupert	Thunder Bay	USA/MEX	Vancouver	Total
CN						
Origin		135	102	1	206	444
Enroute	21	214	4	22	338	599
Destination	32		105	33	102	272
	53	349	211	56	646	1315
CP						
Origin	74		452	137	778	1441
Enroute	21		68	100	132	321
Destination			161	3	168	332
	95		681	240	1078	2094
US Rail / Short Line						
Origin						
Enroute				37		37
Destination	1			20	34	55
	1			57	34	92

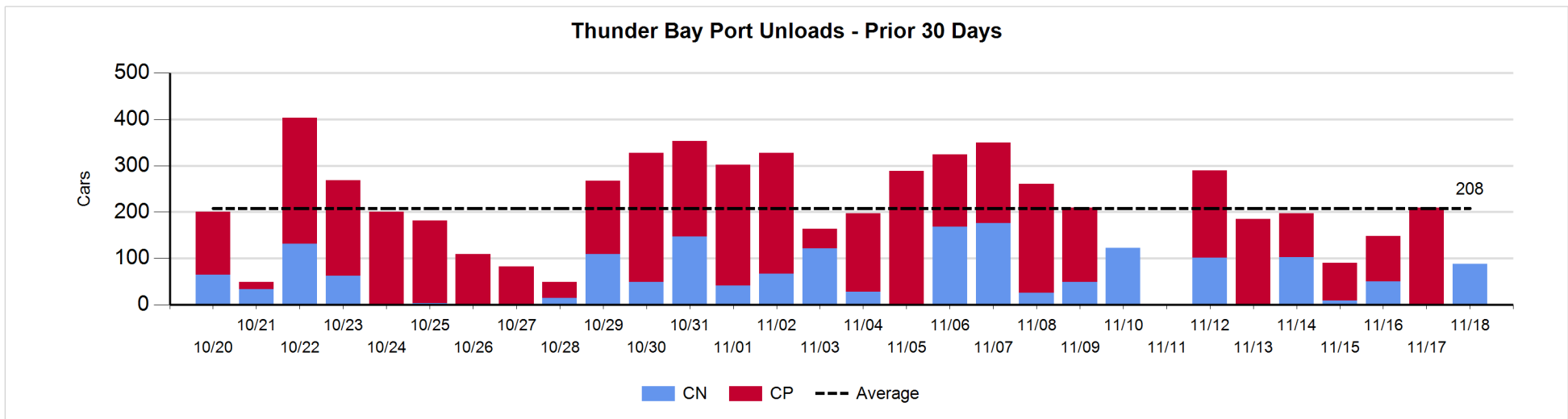
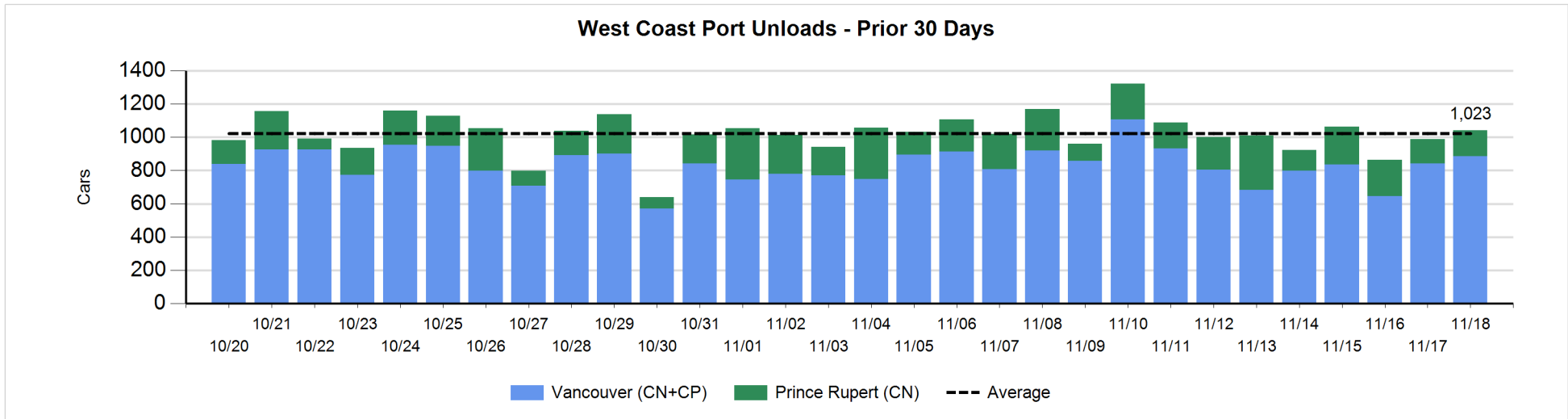
Change in Loads Not Moving 48 Hours or More - 11/18/2018

	E Canada	Prince Rupert	Thunder Bay	USA/MEX	Vancouver	Total
CN						
Origin		-26	0	1	192	167
Enroute	-11	78	-46	-1	123	143
Destination	-2		100	14	25	137
	-13	52	54	14	340	447
CP						
Origin	63		347	-4	249	655
Enroute	-19		1	8	-49	-59
Destination			160	0	24	184
	44		508	4	224	780
US Rail / Short Line						
Origin						
Enroute				-1		-1
Destination	1			-1	4	4
	1			-2	4	3



Port Unloads - 11/18/2018

	Prince Rupert	Vancouver	West Coast Total	Thunder Bay	Total
CN	157	386	543	88	631
CP		500	500		500
	157	886	1,043	88	1,131



Port Terminal Status

Vancouver

Daily Activity for 11/18/2018

	Cars Arrived	Cars Received in Interchange	Cars Delivered in Interchange	Cars Placed for Unloading	Loads on Wheels at Destination As of 11/18/2018
CN	566	128	127	481	770
CP	411	127	140	434	480
SRY		12			79

Port Unloads

	11/18	11/17	Week To Date	Last Week
CN	386	401	2,751	3,283
CP	500	442	2,747	3,148
SRY			56	51

Age Profile of Loaded Cars Waiting Placement for Unloading

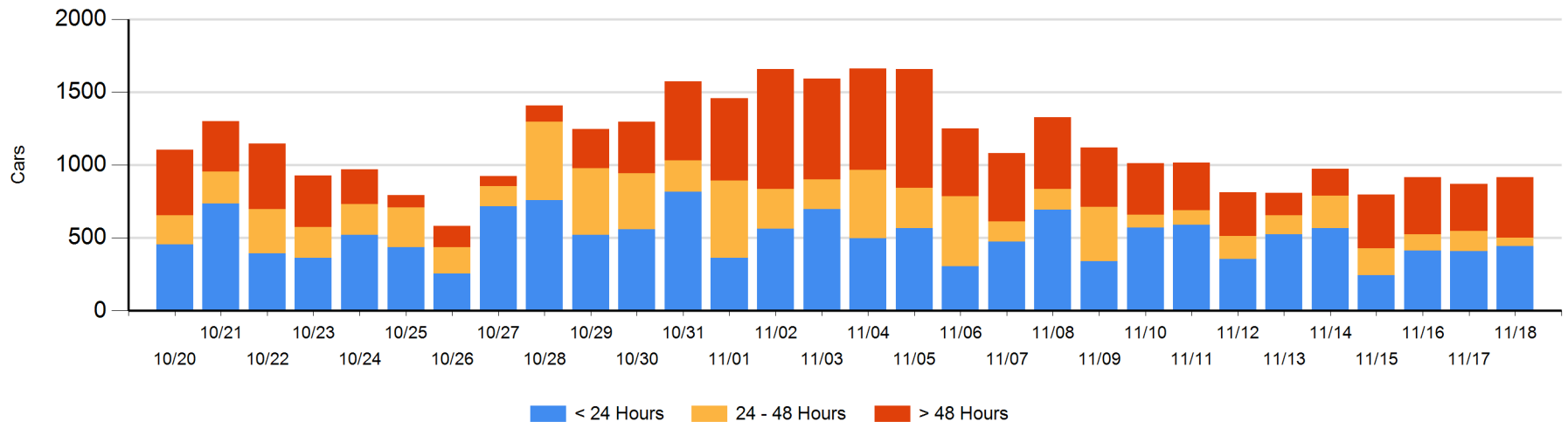
Today

	< 24 Hrs	24 - 48 Hrs	> 48-72 Hrs	> 72 Hrs	Total On Hand
CN	338	43	50	95	526
CP	105	15	69	200	389
SRY					0

Change in Last 24 Hours

	< 24 Hrs	24-48 Hrs	48 - 72 Hrs	> 72 Hrs
CN	296	-23	7	30
CP	-261	-60	31	26
SRY				

Loaded Cars on Hand Vancouver Waiting for Placement - Last 30 Days All Railways



Port Terminal Status

Prince Rupert

Daily Activity for 11/18/2018

	Cars Arrived	Cars Received in Interchange	Cars Delivered in Interchange	Cars Placed for Unloading	Loads on Wheels at Destination As of 11/18/2018
CN	103			103	112

Port Unloads

	11/18	11/17	Week To Date	Last Week
CN	157	145	1,391	1,266

Age Profile of Loaded Cars Waiting Placement for Unloading

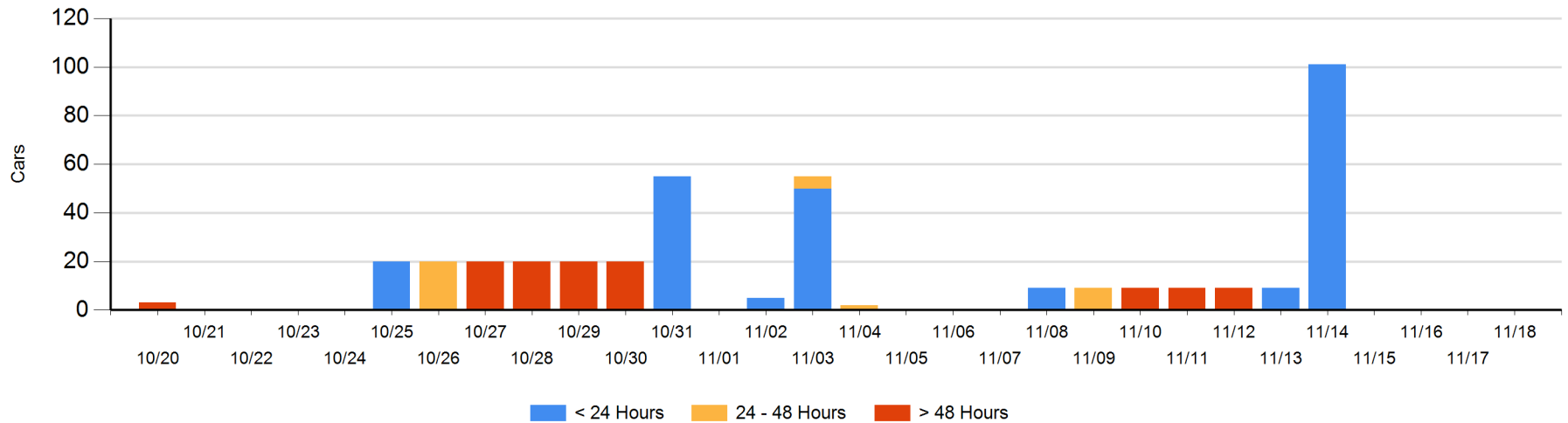
Today

	< 24 Hrs	24 - 48 Hrs	> 48-72 Hrs	> 72 Hrs	Total On Hand
CN					0

Change in Last 24 Hours

	< 24 Hrs	24-48 Hrs	48 - 72 Hrs	> 72 Hrs
CN				

Loaded Cars on Hand Prince Rupert Waiting for Placement - Last 30 Days All Railways



Port Terminal Status

Thunder Bay

Daily Activity for 11/18/2018

	Cars Arrived	Cars Received in Interchange	Cars Delivered in Interchange	Cars Placed for Unloading	Loads on Wheels at Destination As of 11/18/2018
CN				48	257
CP	219			22	725

Port Unloads

	11/18	11/17	Week To Date	Last Week
CN	88		353	542
CP		210	855	1,015

Age Profile of Loaded Cars Waiting Placement for Unloading

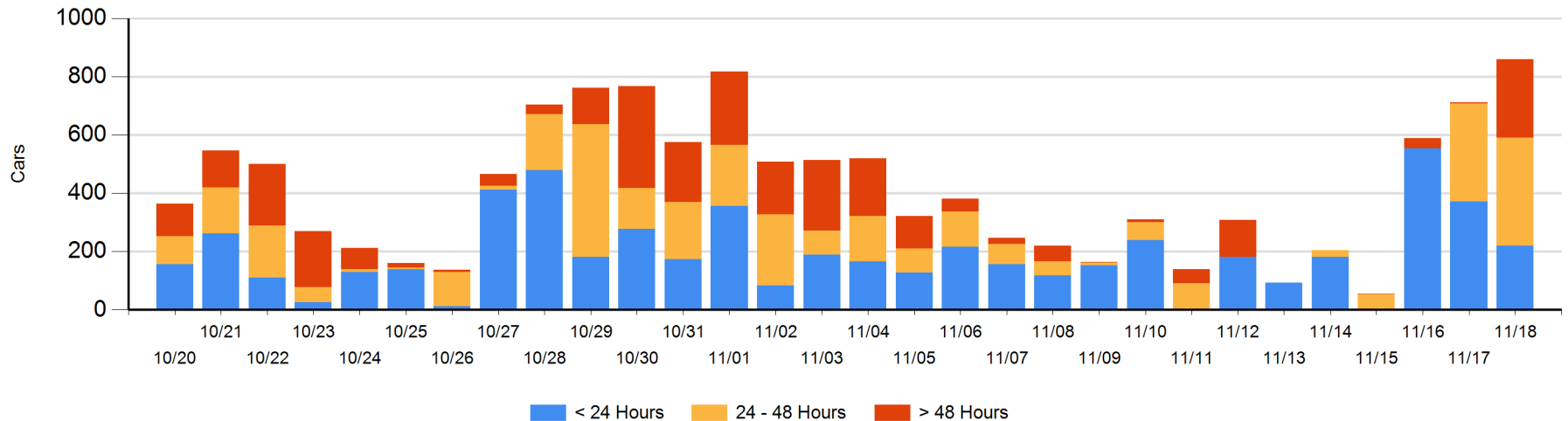
Today

	< 24 Hrs	24 - 48 Hrs	> 48-72 Hrs	> 72 Hrs	Total On Hand
CN		95	109	2	206
CP	219	276	158	1	654

Change in Last 24 Hours

	< 24 Hrs	24-48 Hrs	48 - 72 Hrs	> 72 Hrs
CN	-95	-62	109	0
CP	-57	96	158	0

Loaded Cars on Hand Thunder Bay Waiting for Placement - Last 30 Days All Railways



Measurement Definitions

Loads on Wheels	<p>Count of loaded rail cars including all rail cars that have been released loaded at origin and have not been reported by the railway as unloaded at destination.</p> <p>Counts include all rail cars (hopper cars and boxcars) moving within a pipeline.</p>
Loads Not Moving	<p>Loaded rail cars for which the railways have not reported a movement event for 48 hours or more whether the rail car is at origin, enroute or at destination.</p>
Port Unloads	<p>Count of rail cars reported by railways as unloaded at the western port destinations of Vancouver, Prince Rupert and Thunder Bay.</p> <p>Unload counts include all rail cars (hopper cars and boxcars) unloaded by all receivers including major port terminals, transloaders and other receivers.</p>
Cars Arrived	<p>Count of rail cars reported as arrived at the destination railway terminal.</p>
Cars Received in Interchange	<p>Count of rail cars received in interchange by each railway within a destination railway terminal. Interchange activity is tracked for the Vancouver and Thunder Bay pipelines as applicable.</p>
Cars Delivered in Interchange	<p>Count of rail cars delivered in interchange by each railway within a destination railway terminal. Interchange activity is tracked for the Vancouver and Thunder Bay pipelines as applicable.</p>
Cars Placed for Unloading	<p>Count of rail cars reported by the railways as placed loaded at the receiver's facility for unloading.</p>
Loads on Wheels at Destination	<p>Count of rail cars that remain under load within the destination railway terminal including rail cars that have been reported as placed for unloading but not yet reported as unloaded.</p>
Waiting Placement for Unloading	<p>Count of rail cars that have been reported as arrived at the destination railway terminal but not reported as placed for unloading by the railway.</p> <p>For the Ports of Vancouver, Prince Rupert and Thunder Bay the count of rail cars waiting placement for unloading is categorized by age – i.e. the elapsed time from arrival at destination to the current report date.</p>