

SPEED READ

- Loads on wheels increased overnight, reflecting a rise in both CN and CP volumes. On a net basis, volumes increased due to higher volumes in the Vancouver, Prince Rupert and E. Canada corridors offset by lower volumes in the Thunder Bay and USA/MEX corridors.
- Network fluidity improved overnight, led by a decline in idle car counts on both CN and CP by 6% (-44) and 13% (-176), respectively. The total count of cars for 4+ days on both railways fell 18% (-190) overnight - now at 859 cars.
- Four days in Week 10 unloads now ahead of prior week's performance by around 300 unloads, reflecting improved week over week performance at Thunder Bay and Prince Rupert offset by lower unloads at Vancouver.

Loads on Wheels

- Loads on wheels gained 4% (+397) overnight, due to higher traffic on both CN and CP - combined total at 11,038 and 11% above the trailing 30-day average.
- On a net basis, the rise in loads on wheels reflects higher traffic in the Vancouver, Prince Rupert and E. Canada corridors offset by reduced volumes in the Thunder Bay and USA/MEX corridors.
- CN volumes rose marginally by 1% (+70) overnight, with higher traffic in the Prince Rupert and E. Canada corridors offset by reduced traffic in the Vancouver, Thunder Bay and USA/MEX corridors. System wide CN loads on wheels presently at 5,134 and 7% above the trailing 30-day average.
- CP volumes gained 5% (+285) overnight, driven by a rise in traffic in the Vancouver and Thunder Bay corridors offset by a decline in traffic in the E. Canada and USA/MEX corridors. CP system wide loads on wheels now at 5,677 and 17% above the trailing 30-day average.
- Vancouver currently at 6,327, the highest seen in the last 30 days, increased 5% (+316) overnight, now 18% above the trailing 30-day average.
- The Prince Rupert pipeline presently at 1,709, increased 6% (+97) overnight and 21% above the trailing 30-day average.
- Thunder Bay volumes declined 2% (-37) overnight and have now decreased for the fourth consecutive day - presently at 1,738 and 1% below the trailing 30-day average, with 83% of traffic moving on CP.

Hopper Car Rationing

- CP has rationed 25 hopper car orders for week 9.

Loads Not Moving

- **The count of cars not moving for 48+ hours declined 10% (-220) overnight and have now decreased for four consecutive days, reflecting lower counts on both CN and CP. Idle car counts now at 1,897 and 8% above the trailing 30-day average.**
- CN
 - **The count of idle cars for 48+ hours decreased for the fourth consecutive day, down 6% (-44) overnight - now at 737 cars.**
 - The number of cars idle for 4+ days fell 6% (-15) overnight and have now decreased for the third consecutive day - currently at 223 cars.
 - The count of cars not moving for 7+ days rose 7% (+13) overnight - currently at 191 cars.
 - Vancouver represents 65% of all idle cars.
 - In total 43% of all idle cars are dwelling at origin locations.
- CP
 - **CP idle car counts for 48+ hours fell 13% (-176) overnight - now at 1,160 cars.**
 - The number of cars idle for 4+ days declined 22% (-175) overnight - presently at 636 cars.

- The number of cars idle for 7+ days declined 15% (-26) overnight - presently at 150 cars.
- Vancouver accounts for 47% of all idle cars.
- In total 55% of all idle cars are dwelling at origin locations.

Port Performance

- CN and CP reported a total of 1,013 cars unloaded at the three major ports, now 11% below the trailing 30 day-average. Four days in Week 10 unloads are tracking ahead of last week's pace by less than 300 unloads, reflecting higher unloads at Thunder Bay and Prince Rupert offset by reduced unloads at Vancouver.
- Vancouver
 - 667 unloads reported by CN and CP at the Port of Vancouver; CN - 346 and CP - 321. Four days in Week 10 unloads are tracking behind last week's performance by less than 200 unloads.
 - There are less than 1,450 cars on site at Vancouver with more than 1,350 cars arriving at the port in the last 24 hours.
 - CN and CP have less than 1,150 cars in British Columbia en route to Vancouver, with fewer than 550 cars at Kamloops and west, and 51% of traffic moving on CN.
- Prince Rupert
 - Prince Rupert reported 55 unloads, now ahead of last week's unloads after four days by more than 50 unloads.
 - Loads on wheels now above 1,000 cars - presently at 1,709 cars.
 - There are more than 600 cars west of Jasper en route to Prince Rupert.
 - There are more than 50 cars on site at Prince Rupert with 100 cars arriving at the port in the last 24 hours. Given the structure of the pipeline, there appears to be sufficient cars available to support unloads in the next few days.
- Thunder Bay
 - 291 unloads were reported at Thunder Bay yesterday. Four days in Week 10 unloads are tracking ahead of last week's pace by 400 unloads.
 - There are more than 800 cars on site at Thunder Bay with less than 350 cars arriving at the port in the prior 24 hours.
 - There are more than 350 cars en route to Thunder Bay from Winnipeg and east. Cars on hand and those en route should support unloads for the balance of the week.

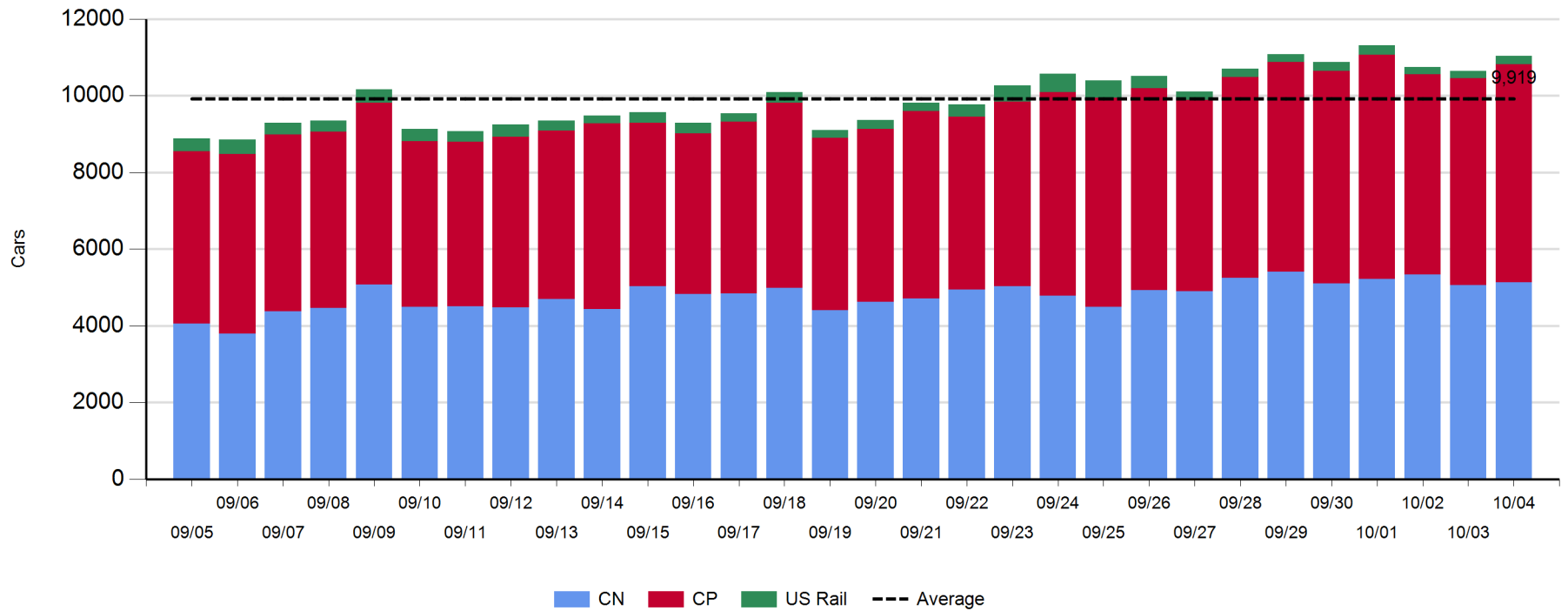
Daily Loads on Wheels - 10/4/2018

	E Canada	Prince Rupert	Thunder Bay	USA/MEX	Vancouver	Total
CN	210	1,709	292	214	2,709	5,134
CP	114		1,446	583	3,534	5,677
Short Line	3				84	87
US Rail				140		140
	327	1,709	1,738	937	6,327	11,038

Change in Loads on Wheels - Prior 24 Hours

	E Canada	Prince Rupert	Thunder Bay	USA/MEX	Vancouver	Total
CN	88	97	-48	-11	-56	70
CP	-44		11	-6	324	285
Short Line	-9				48	39
US Rail				3		3
	35	97	-37	-14	316	397

Loads on Wheels - Prior 30 Days

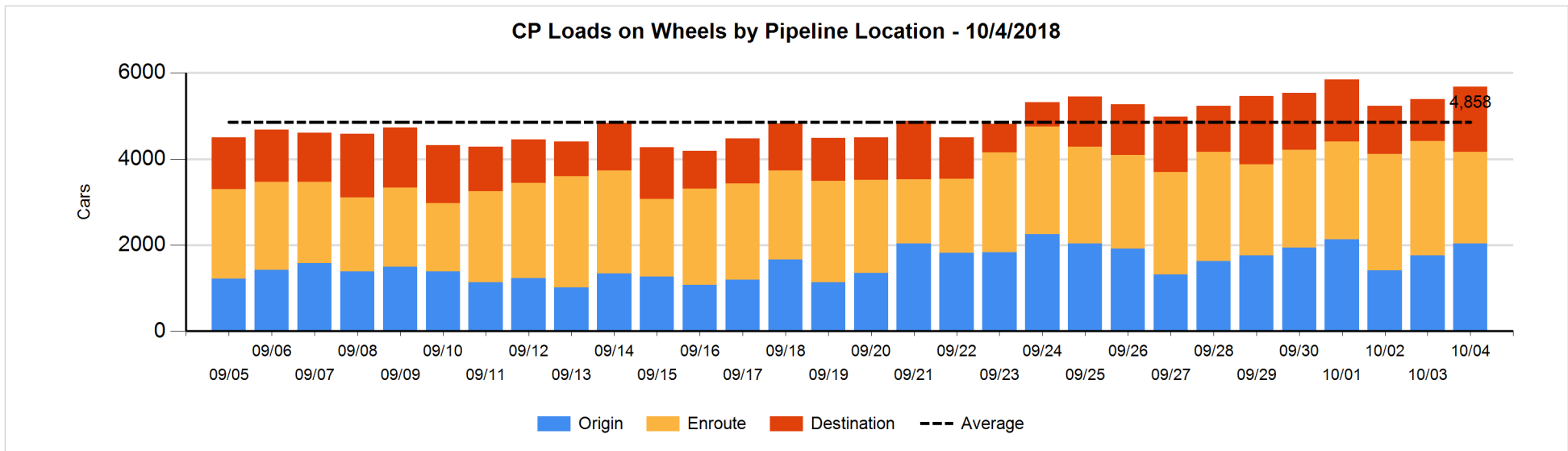
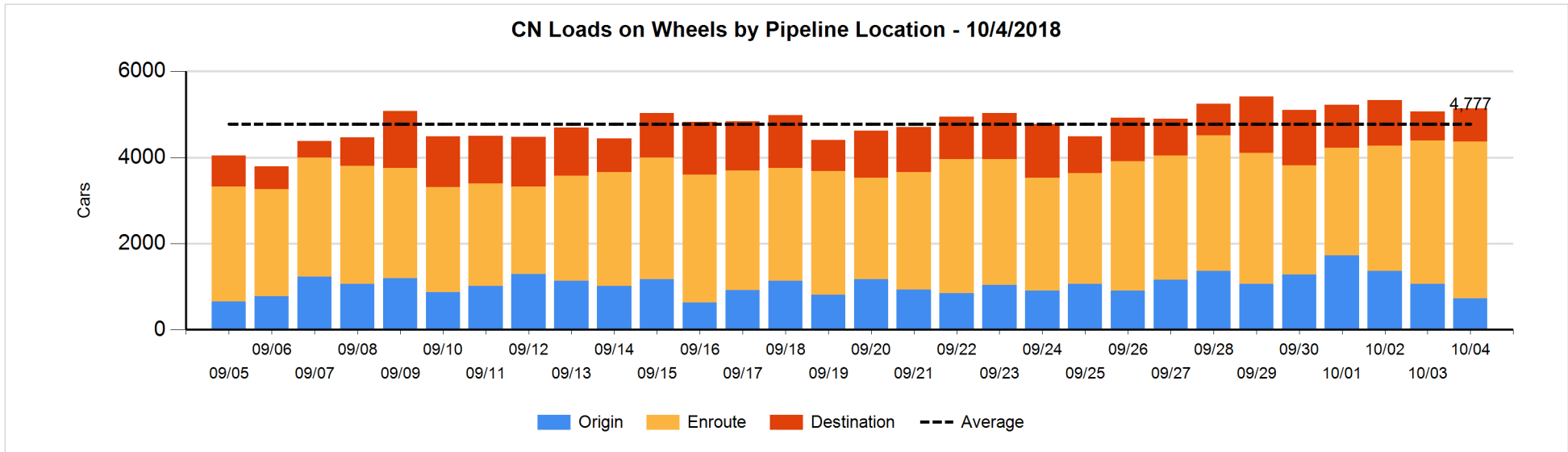


Daily Loads on Wheels By Pipeline Location - 10/4/2018

	E Canada	Prince Rupert	Thunder Bay	USA/MEX	Vancouver	Total
CN						
Origin	5	224	5	5	484	723
Enroute	199	1,413	199	194	1,641	3,646
Destination	6	72	88	15	584	765
	210	1,709	292	214	2,709	5,134
CP						
Origin	36		269	72	1,664	2,041
Enroute	66		445	505	1,104	2,120
Destination	12		732	6	766	1,516
	114		1,446	583	3,534	5,677
US Rail / Short Line						
Origin						
Enroute	3			84		87
Destination				56	84	140
	3			140	84	227

Change in Daily Loads on Wheels By Pipeline Location - Prior 24 Hours

	E Canada	Prince Rupert	Thunder Bay	USA/MEX	Vancouver	Total
CN						
Origin	-25	-30	-45	-36	-200	-336
Enroute	117	83	50	26	36	312
Destination	-4	44	-53	-1	108	94
	88	97	-48	-11	-56	70
CP						
Origin	-8		-92	-64	442	278
Enroute	60		4	52	-651	-535
Destination	-96		99	6	533	542
	-44		11	-6	324	285
US Rail / Short Line						
Origin						
Enroute	-9			16		7
Destination				-13	48	35
	-9			3	48	42

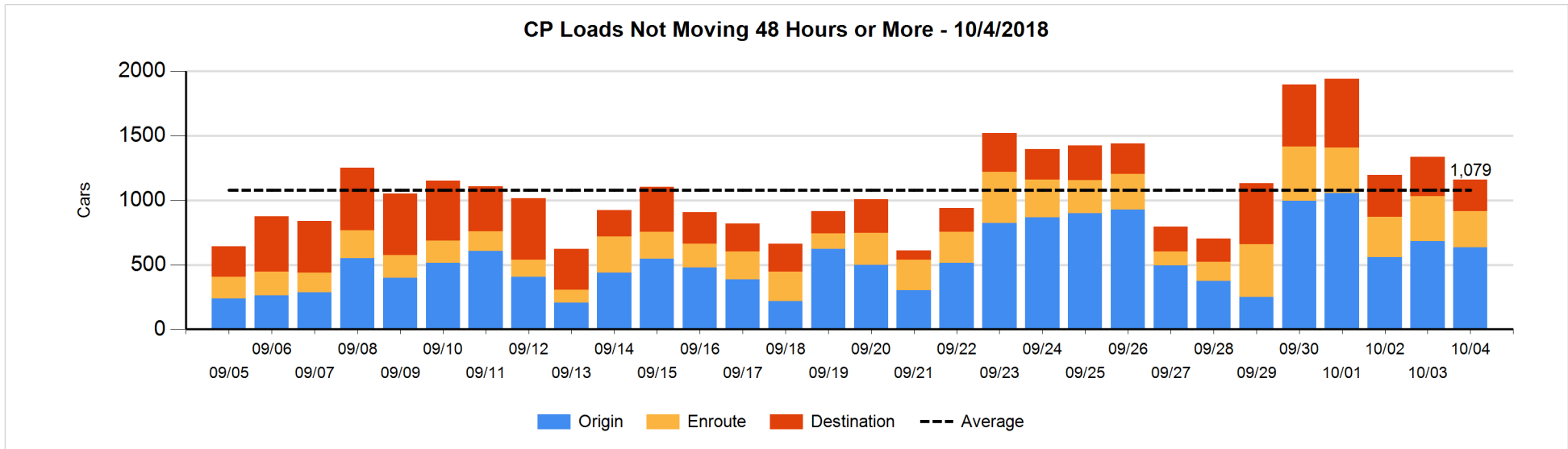
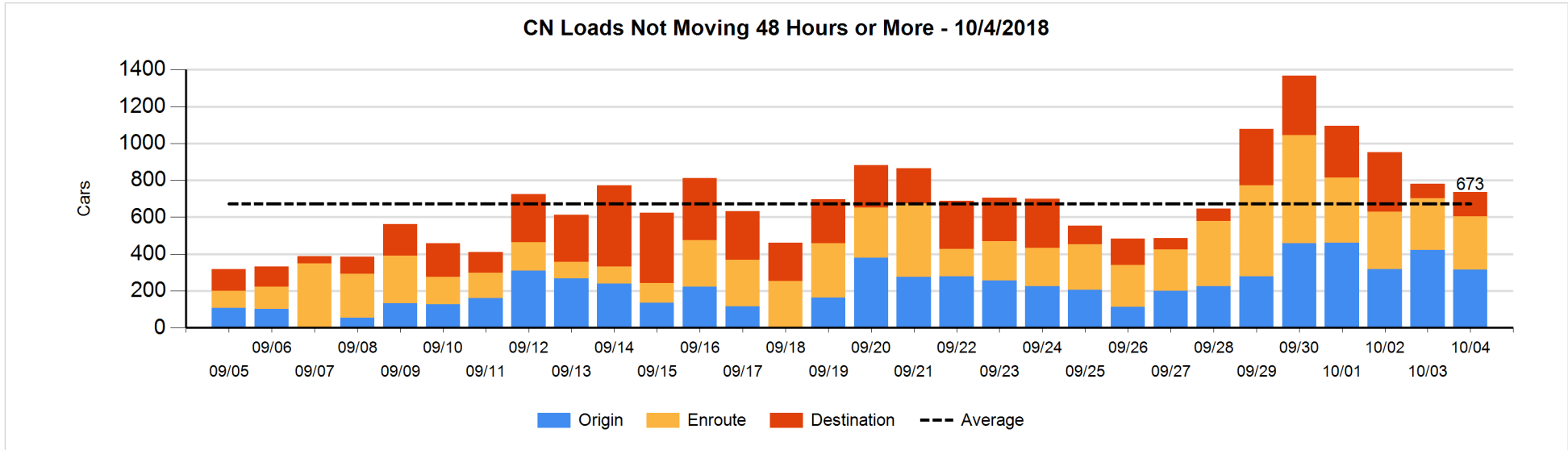


Loads Not Moving 48 Hours or More - 10/4/2018

	E Canada	Prince Rupert	Thunder Bay	USA/MEX	Vancouver	Total
CN						
Origin		103			211	314
Enroute	9	84	1	39	156	289
Destination	2	1	8	10	113	134
	11	188	9	49	480	737
CP						
Origin	18		133	19	463	633
Enroute	3		43	194	42	282
Destination			203		42	245
	21		379	213	547	1160
US Rail / Short Line						
Origin						
Enroute	3			19		22
Destination				19	14	33
	3			38	14	55

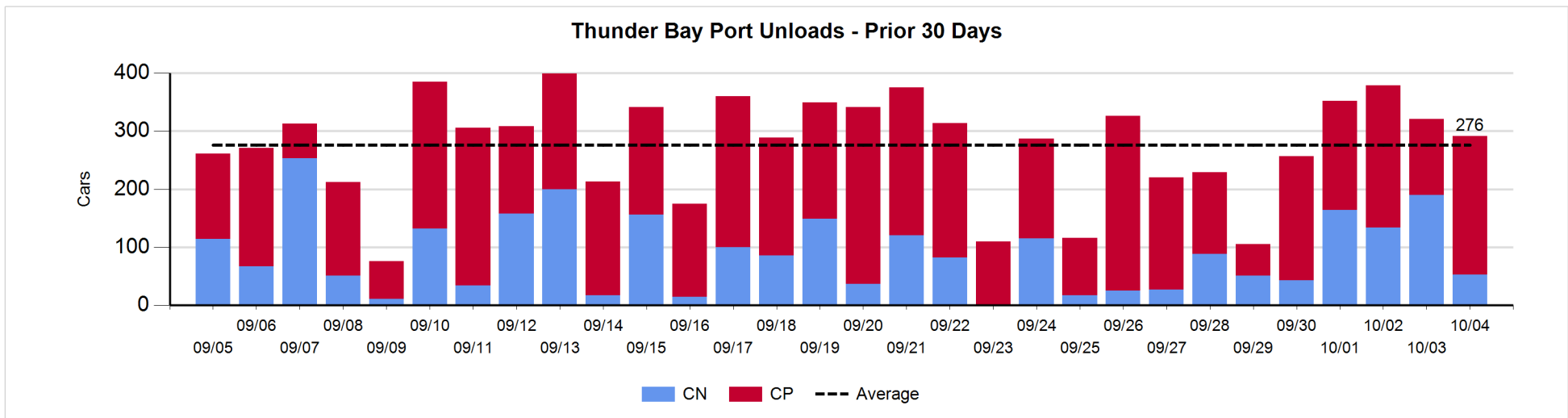
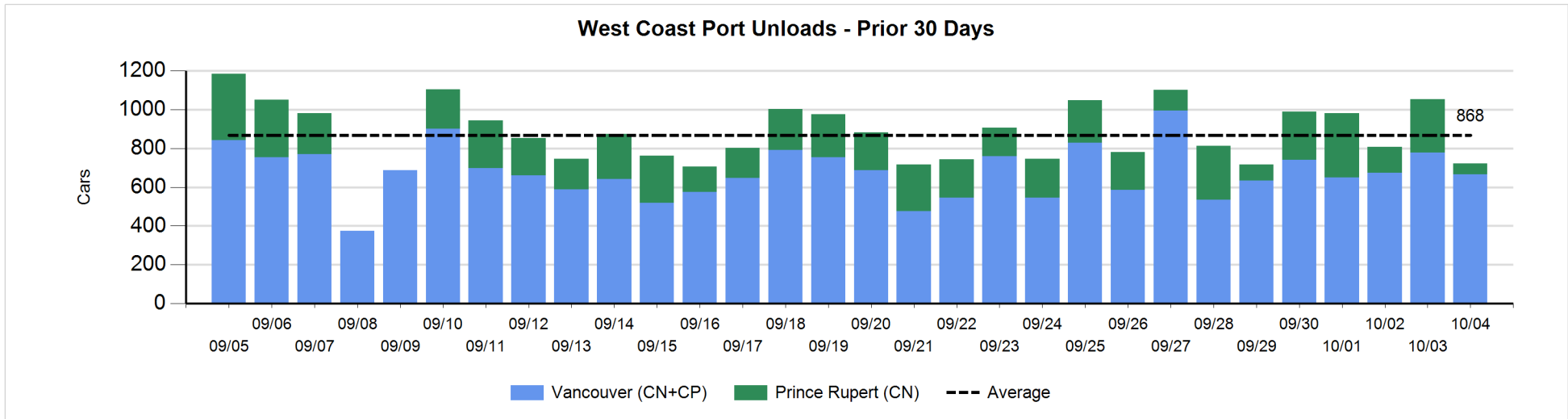
Change in Loads Not Moving 48 Hours or More - 10/4/2018

	E Canada	Prince Rupert	Thunder Bay	USA/MEX	Vancouver	Total
CN						
Origin		-104			-4	-108
Enroute	5	52	0	-54	6	9
Destination	-7	0	-8	2	68	55
	-2	-52	-8	-52	70	-44
CP						
Origin	-6		0	-1	-41	-48
Enroute	0		16	19	-104	-69
Destination			-11		-48	-59
	-6		5	18	-193	-176
US Rail / Short Line						
Origin						
Enroute	1			-1		0
Destination				2	-5	-3
	1			1	-5	-3



Port Unloads - 10/4/2018

	Prince Rupert	Vancouver	West Coast Total	Thunder Bay	Total
CN	55	346	401	53	454
CP		321	321	238	559
	55	667	722	291	1,013



Port Terminal Status

Vancouver

Daily Activity for 10/4/2018

	Cars Arrived	Cars Received in Interchange	Cars Delivered in Interchange	Cars Placed for Unloading	Loads on Wheels at Destination As of 10/4/2018
CN	342	112		390	584
CP	1,021		155	358	766
SRY		43		6	84

Port Unloads

	10/04	10/03	Week To Date	Last Week
CN	346	359	1,225	2,284
CP	321	418	1,544	2,581
SRY	6	1	25	37

Age Profile of Loaded Cars Waiting Placement for Unloading

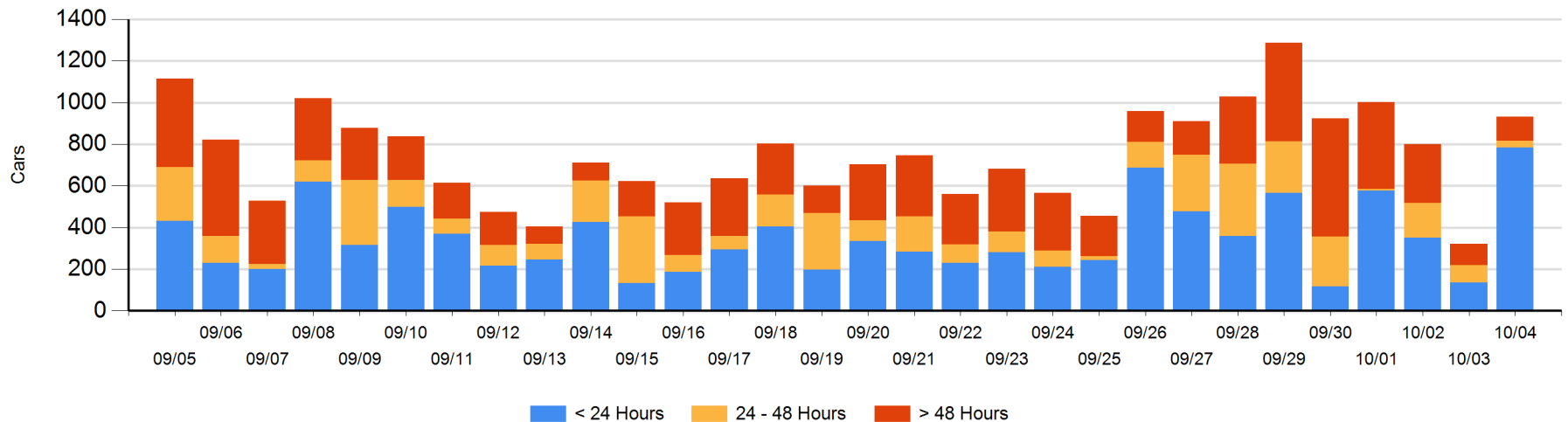
Today

	< 24 Hrs	24 - 48 Hrs	> 48-72 Hrs	> 72 Hrs	Total On Hand
CN	220	10	14	6	250
CP	564	21	56	40	681
SRY					0

Change in Last 24 Hours

	< 24 Hrs	24-48 Hrs	48 - 72 Hrs	> 72 Hrs
CN	106	-17	13	-37
CP	543	-35	34	3
SRY				

Loaded Cars on Hand Vancouver Waiting for Placement - Last 30 Days All Railways



Port Terminal Status

Prince Rupert

Daily Activity for 10/4/2018

	Cars Arrived	Cars Received in Interchange	Cars Delivered in Interchange	Cars Placed for Unloading	Loads on Wheels at Destination As of 10/4/2018
CN	98			53	72

Port Unloads

	10/04	10/03	Week To Date	Last Week
CN	55	275	794	1,327

Age Profile of Loaded Cars Waiting Placement for Unloading

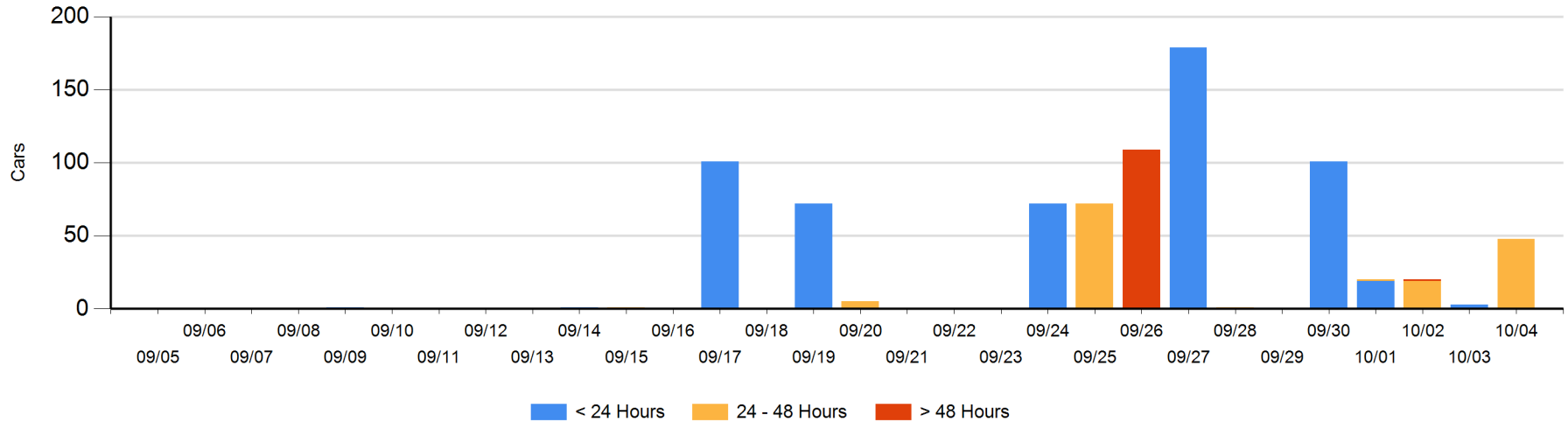
Today

	< 24 Hrs	24 - 48 Hrs	> 48-72 Hrs	> 72 Hrs	Total On Hand
CN		48			48

Change in Last 24 Hours

	< 24 Hrs	24-48 Hrs	48 - 72 Hrs	> 72 Hrs
CN	-3	48		

Loaded Cars on Hand Prince Rupert Waiting for Placement - Last 30 Days All Railways



Port Terminal Status

Thunder Bay

Daily Activity for 10/4/2018

	Cars Arrived	Cars Received in Interchange	Cars Delivered in Interchange	Cars Placed for Unloading	Loads on Wheels at Destination As of 10/4/2018
CN					88
CP	337			300	732

Port Unloads

	10/04	10/03	Week To Date	Last Week
CN	53	190	541	366
CP	238	131	802	1,174

Age Profile of Loaded Cars Waiting Placement for Unloading

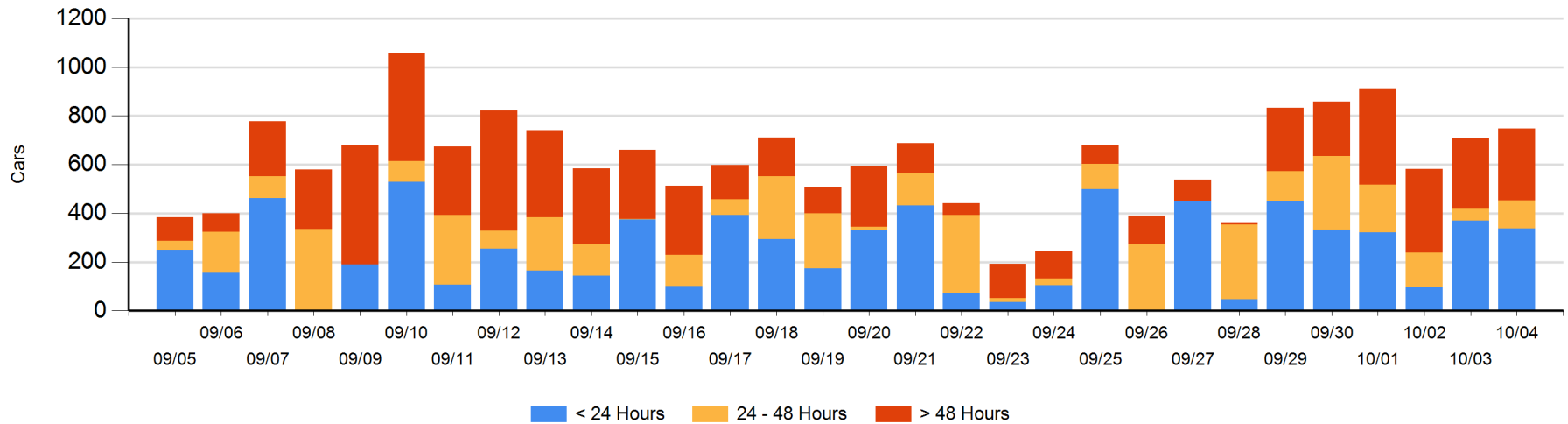
Today

	< 24 Hrs	24 - 48 Hrs	> 48-72 Hrs	> 72 Hrs	Total On Hand
CN			1	82	83
CP	337	117	11	199	664

Change in Last 24 Hours

	< 24 Hrs	24-48 Hrs	48 - 72 Hrs	> 72 Hrs
CN		-1	1	0
CP	-33	69	-108	110

Loaded Cars on Hand Thunder Bay Waiting for Placement - Last 30 Days All Railways



Measurement Definitions

Loads on Wheels	<p>Count of loaded rail cars including all rail cars that have been released loaded at origin and have not been reported by the railway as unloaded at destination.</p> <p>Counts include all rail cars (hopper cars and boxcars) moving within a pipeline.</p>
Loads Not Moving	<p>Loaded rail cars for which the railways have not reported a movement event for 48 hours or more whether the rail car is at origin, enroute or at destination.</p>
Port Unloads	<p>Count of rail cars reported by railways as unloaded at the western port destinations of Vancouver, Prince Rupert and Thunder Bay.</p> <p>Unload counts include all rail cars (hopper cars and boxcars) unloaded by all receivers including major port terminals, transloaders and other receivers.</p>
Cars Arrived	<p>Count of rail cars reported as arrived at the destination railway terminal.</p>
Cars Received in Interchange	<p>Count of rail cars received in interchange by each railway within a destination railway terminal. Interchange activity is tracked for the Vancouver and Thunder Bay pipelines as applicable.</p>
Cars Delivered in Interchange	<p>Count of rail cars delivered in interchange by each railway within a destination railway terminal. Interchange activity is tracked for the Vancouver and Thunder Bay pipelines as applicable.</p>
Cars Placed for Unloading	<p>Count of rail cars reported by the railways as placed loaded at the receiver's facility for unloading.</p>
Loads on Wheels at Destination	<p>Count of rail cars that remain under load within the destination railway terminal including rail cars that have been reported as placed for unloading but not yet reported as unloaded.</p>
Waiting Placement for Unloading	<p>Count of rail cars that have been reported as arrived at the destination railway terminal but not reported as placed for unloading by the railway.</p> <p>For the Ports of Vancouver, Prince Rupert and Thunder Bay the count of rail cars waiting placement for unloading is categorized by age – i.e. the elapsed time from arrival at destination to the current report date.</p>