

SPEED READ

- Loads on wheels declined slightly overnight, marking lower CP volumes offset by an increase in CN volumes. On a net basis, volumes decreased due to lower traffic across all corridors other than USA/MEX.
- Network fluidity improved overnight, led by a decline in idle car counts on both CN and CP by 42% (-615) and 2% (-23), respectively. The total count of cars for 4+ days on both railways fell 28% (-343) overnight - presently at 902 cars.
- Three days in Week 11 unloads now ahead of prior week's performance by 350 unloads, marking an improvement in week over week performance at Vancouver offset by reduced unloads at Prince Rupert and Thunder Bay.

Loads on Wheels

- Loads on wheels decreased marginally (-20) overnight, due to lower volumes on CP offset by higher volumes on CN - combined total at 10,834 and 5% above the trailing 30-day average.
- On a net basis, the decline in loads on wheels indicates lower volumes across all corridors other than USA/MEX.
- CN volumes rose 3% (+167) overnight, with higher volumes in the Vancouver, Thunder Bay and E. Canada corridors offset by reduced volumes in the Prince Rupert and USA/MEX corridors. System wide CN loads on wheels currently at 5,623 and 12% above the trailing 30-day average.
- CP volumes fell 7% (-358) overnight, driven by a decline in volumes across all corridors - Vancouver, Thunder Bay, USA/MEX and E. Canada. CP system wide loads on wheels currently at 4,820 and 4% below the trailing 30-day average.
- Vancouver presently at 6,560, remained largely unchanged (-2) overnight, now 16% above the trailing 30-day average.
- The Prince Rupert pipeline now at 1,229, fell for the fourth consecutive day, down 2% (-20) overnight and 19% below the trailing 30 day-average.
- Thunder Bay volumes decreased slightly by 2% (-28) overnight - now at 1,521 and 11% below the trailing 30-day average, with 71% of traffic moving on CP.

Hopper Car Rationing

- No hopper car rationing was reported for either CN or CP in week 10.

Loads Not Moving

- **The count of cars not moving for 48+ hours declined for three consecutive days, down 25% (-638) overnight, marking lower counts on both CN and CP. Idle car counts now at 1,950 and in line with the trailing 30 day-average.**
- CN
 - **The count of idle cars for 48+ hours fell 42% (-615) overnight - currently at 866 cars.**
 - The number of cars idle for 4+ days stayed unchanged (-2) overnight - now at 562 cars.
 - The count of cars not moving for 7+ days decreased significantly by 52% (-117) overnight - presently at 110 cars.
 - Vancouver represents 36% of all idle cars.
 - In total 60% of all idle cars are dwelling at origin locations.
- CP
 - **CP idle car counts for 48+ hours declined 2% (-23) overnight and have now decreased for the third consecutive day - currently at 1,084 cars.**
 - The number of cars idle for 4+ days declined significantly by 50% (-341) overnight - currently at 340 cars.

- The number of cars idle for 7+ days surged by 146% (+105) overnight - presently at 177 cars.
- Vancouver accounts for 34% of all idle cars.
- In total 66% of all idle cars are dwelling at origin locations.

Port Performance

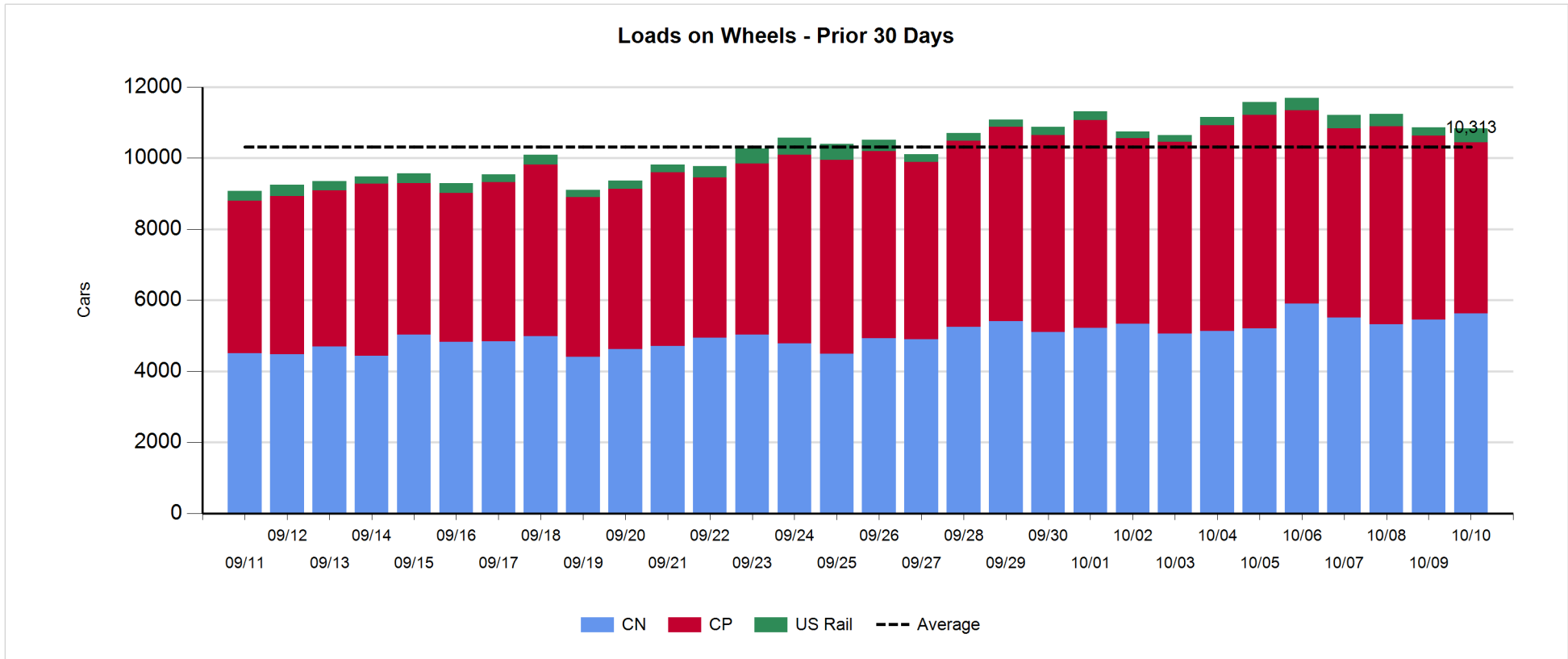
- CN and CP reported a total of 1,456 cars unloaded at the three major ports, now 25% above the trailing 30-day average. Three days in Week 11 unloads are tracking ahead of last week's pace by 350 unloads, marking higher unloads at Vancouver offset by reduced unloads at Prince Rupert and Thunder Bay.
- Vancouver
 - 1,018 unloads, the highest seen in the last 30 days, was reported by CN and CP at the Port of Vancouver; CN - 566 and CP - 452. Three days in Week 11 unloads are tracking ahead of last week's performance by 450 unloads.
 - There are more than 1,350 cars on site at Vancouver with 900 cars arriving at the port in the last 24 hours.
 - CN and CP have more than 1,350 cars in British Columbia en route to Vancouver, with more than 600 cars at Kamloops and west, and 64% of traffic moving on CP.
- Prince Rupert
 - Prince Rupert reported 143 unloads, now behind last week's unloads after three days by 100 unloads.
 - Loads on wheels now above 1,000 cars - currently at 1,229 cars.
 - There are around 300 cars west of Jasper en route to Prince Rupert.
 - There are more than 100 cars on site at Prince Rupert with more than 50 cars arriving at the port in the last 24 hours. Given the structure of the pipeline, there appears to be sufficient cars available to support unloads in the next few days.
- Thunder Bay
 - 295 unloads were reported at Thunder Bay yesterday. Three days in Week 11 unloads are tracking behind last week's pace by 12 unloads.
 - There are 150 cars on site at Thunder Bay with zero cars arriving at the port in the prior 24 hours.
 - There are more than 300 cars en route to Thunder Bay from Winnipeg and east. Cars on hand and those en route should support unloads in the next day or two.

Daily Loads on Wheels - 10/10/2018

	E Canada	Prince Rupert	Thunder Bay	USA/MEX	Vancouver	Total
CN	262	1,229	436	450	3,246	5,623
CP	122		1,085	379	3,234	4,820
Short Line	14				80	94
US Rail				297		297
	398	1,229	1,521	1,126	6,560	10,834

Change in Loads on Wheels - Prior 24 Hours

	E Canada	Prince Rupert	Thunder Bay	USA/MEX	Vancouver	Total
CN	2	-20	14	-1	172	167
CP	-18		-42	-114	-184	-358
Short Line	6				10	16
US Rail				155		155
	-10	-20	-28	40	-2	-20

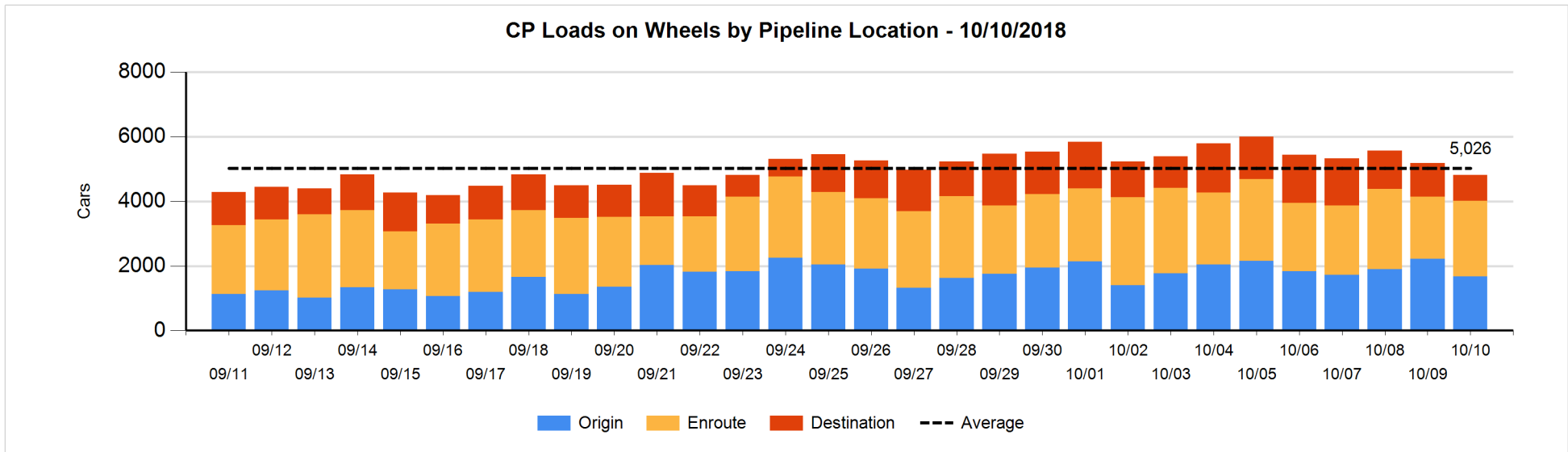
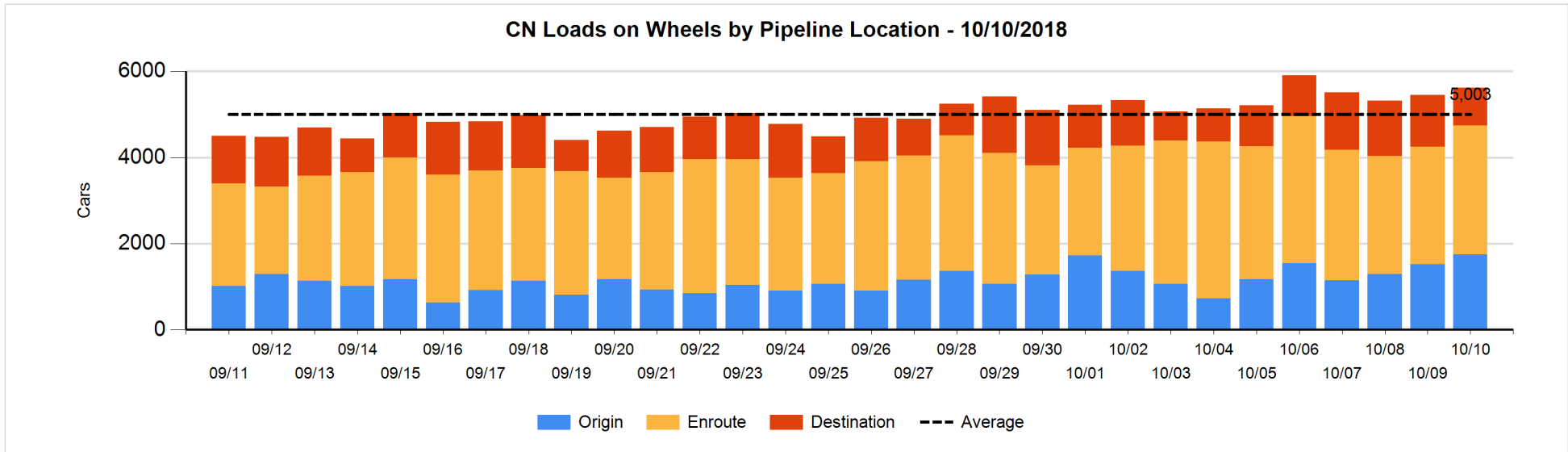


Daily Loads on Wheels By Pipeline Location - 10/10/2018

	E Canada	Prince Rupert	Thunder Bay	USA/MEX	Vancouver	Total
CN						
Origin	51	369	290	93	945	1,748
Enroute	179	731	115	291	1,679	2,995
Destination	32	129	31	66	622	880
	262	1,229	436	450	3,246	5,623
CP						
Origin	45		585	73	975	1,678
Enroute	73		378	297	1,593	2,341
Destination	4		122	9	666	801
	122		1,085	379	3,234	4,820
US Rail / Short Line						
Origin						
Enroute	8			125		133
Destination	6			172	80	258
	14			297	80	391

Change in Daily Loads on Wheels By Pipeline Location - Prior 24 Hours

	E Canada	Prince Rupert	Thunder Bay	USA/MEX	Vancouver	Total
CN						
Origin	-26	120	25	-110	216	225
Enroute	44	-58	72	62	155	275
Destination	-16	-82	-83	47	-199	-333
	2	-20	14	-1	172	167
CP						
Origin	-9		-165	-8	-364	-546
Enroute	-9		334	-17	117	425
Destination	0		-211	-89	63	-237
	-18		-42	-114	-184	-358
US Rail / Short Line						
Origin						
Enroute	0			45		45
Destination	6			110	10	126
	6			155	10	171

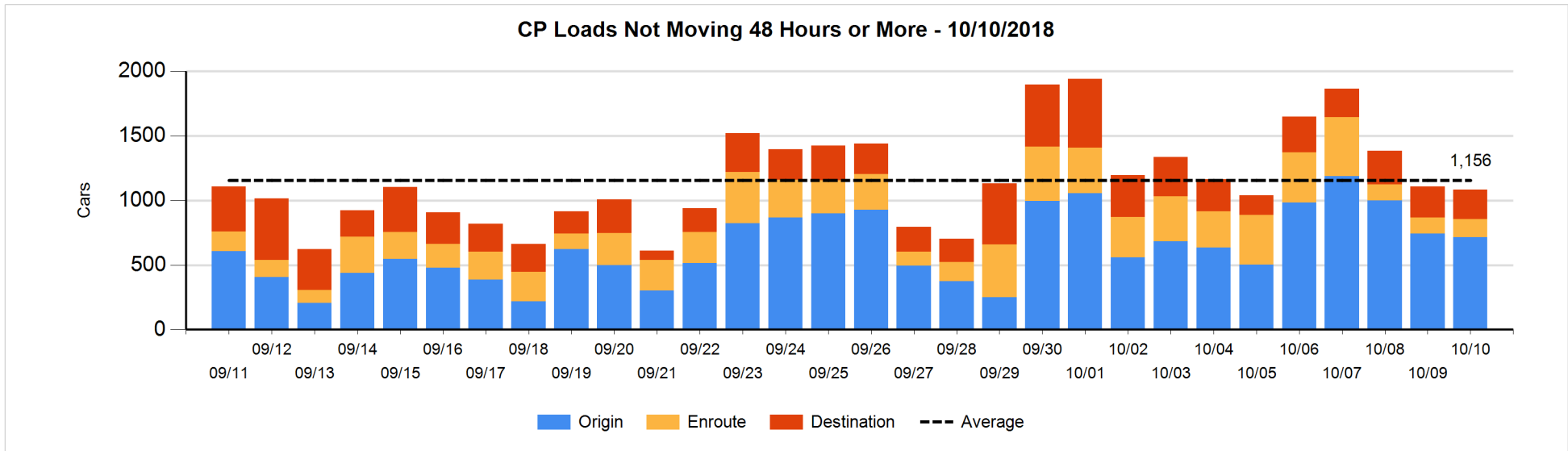
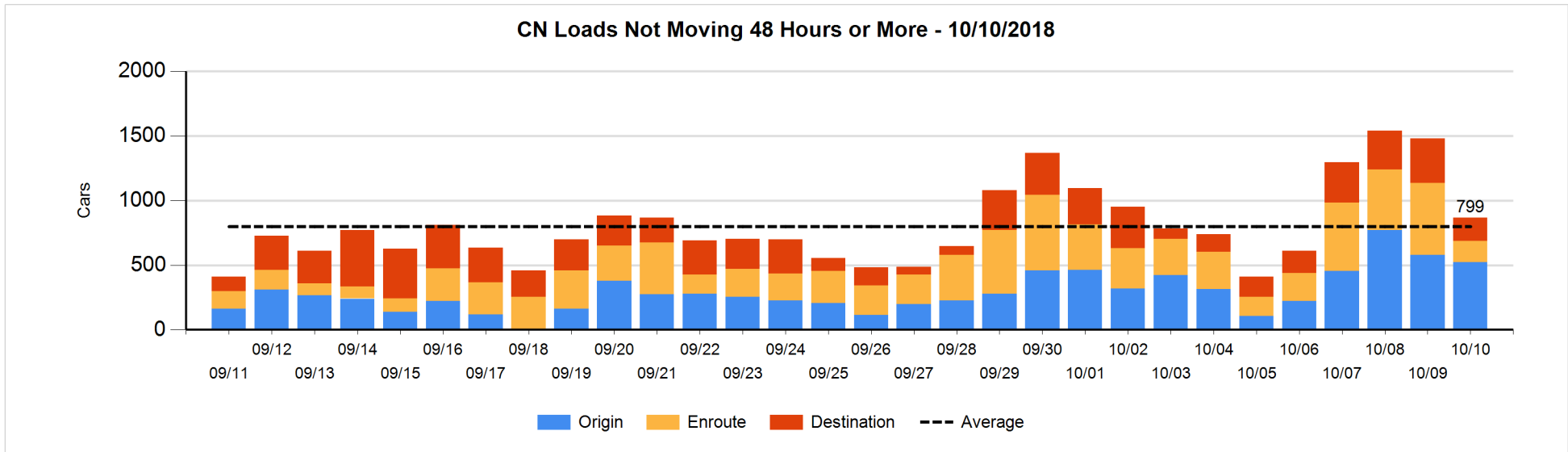


Loads Not Moving 48 Hours or More - 10/10/2018

	E Canada	Prince Rupert	Thunder Bay	USA/MEX	Vancouver	Total
CN						
Origin		146	96	47	232	521
Enroute	20	51		36	60	167
Destination	1	129	18	6	24	178
	21	326	114	89	316	866
CP						
Origin	41		416	28	231	716
Enroute	52		23	54	12	141
Destination			97	2	128	227
	93		536	84	371	1084
US Rail / Short Line						
Origin						
Enroute	3			36		39
Destination				48	26	74
	3			84	26	113

Change in Loads Not Moving 48 Hours or More - 10/10/2018

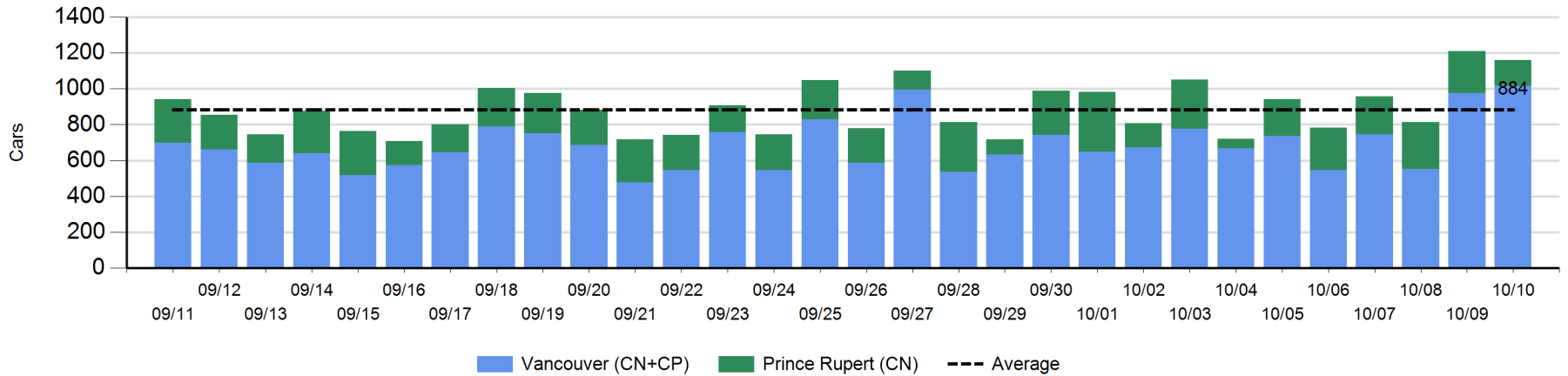
	E Canada	Prince Rupert	Thunder Bay	USA/MEX	Vancouver	Total
CN						
Origin		0	-67	21	-10	-56
Enroute	-2	-164	-1	-9	-214	-390
Destination	-18	105	-14	0	-242	-169
	-20	-59	-82	12	-466	-615
CP						
Origin	-3		219	2	-243	-25
Enroute	-2		1	20	-3	16
Destination			-126	0	112	-14
	-5		94	22	-134	-23
US Rail / Short Line						
Origin						
Enroute	2			-6		-4
Destination				12	-7	5
	2			6	-7	1



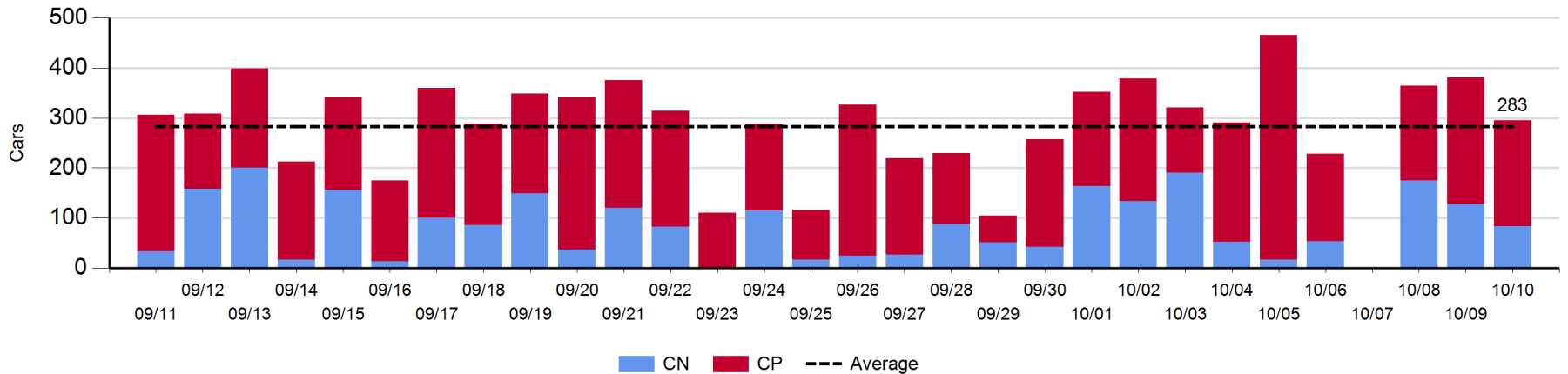
Port Unloads - 10/10/2018

	Prince Rupert	Vancouver	West Coast Total	Thunder Bay	Total
CN	143	566	709	84	793
CP		452	452	211	663
	143	1,018	1,161	295	1,456

West Coast Port Unloads - Prior 30 Days



Thunder Bay Port Unloads - Prior 30 Days



Port Terminal Status

Vancouver

Daily Activity for 10/10/2018

	Cars Arrived	Cars Received in Interchange	Cars Delivered in Interchange	Cars Placed for Unloading	Loads on Wheels at Destination As of 10/10/2018
CN	450	238	111	428	622
CP	448	102	238	578	666
SRY		9		23	80

Port Unloads

	10/10	10/09	Week To Date	Last Week
CN	566	482	1,089	1,982
CP	452	495	1,457	2,817
SRY	6	19	32	49

Age Profile of Loaded Cars Waiting Placement for Unloading

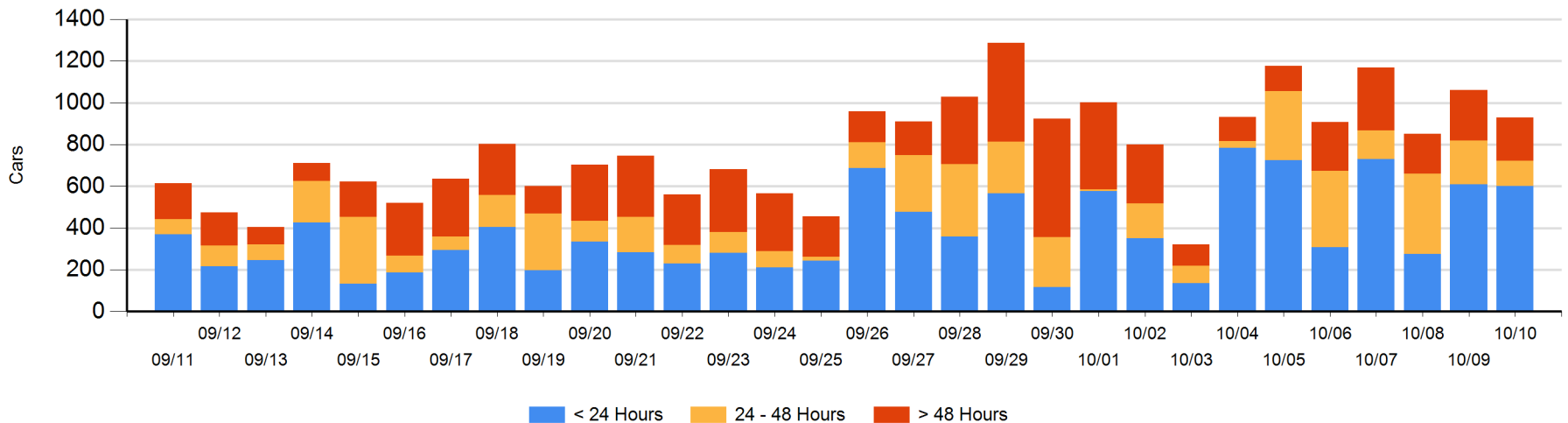
Today

	< 24 Hrs	24 - 48 Hrs	> 48-72 Hrs	> 72 Hrs	Total On Hand
CN	154	77	12	5	248
CP	447	45	135	54	681
SRY					0

Change in Last 24 Hours

	< 24 Hrs	24-48 Hrs	48 - 72 Hrs	> 72 Hrs
CN	42	2	-102	-5
CP	-51	-90	94	-21
SRY				

Loaded Cars on Hand Vancouver Waiting for Placement - Last 30 Days All Railways



Port Terminal Status

Prince Rupert

Daily Activity for 10/10/2018

	Cars Arrived	Cars Received in Interchange	Cars Delivered in Interchange	Cars Placed for Unloading	Loads on Wheels at Destination As of 10/10/2018
CN	61			62	129

Port Unloads

	10/10	10/09	Week To Date	Last Week
CN	143	233	640	1,446

Age Profile of Loaded Cars Waiting Placement for Unloading

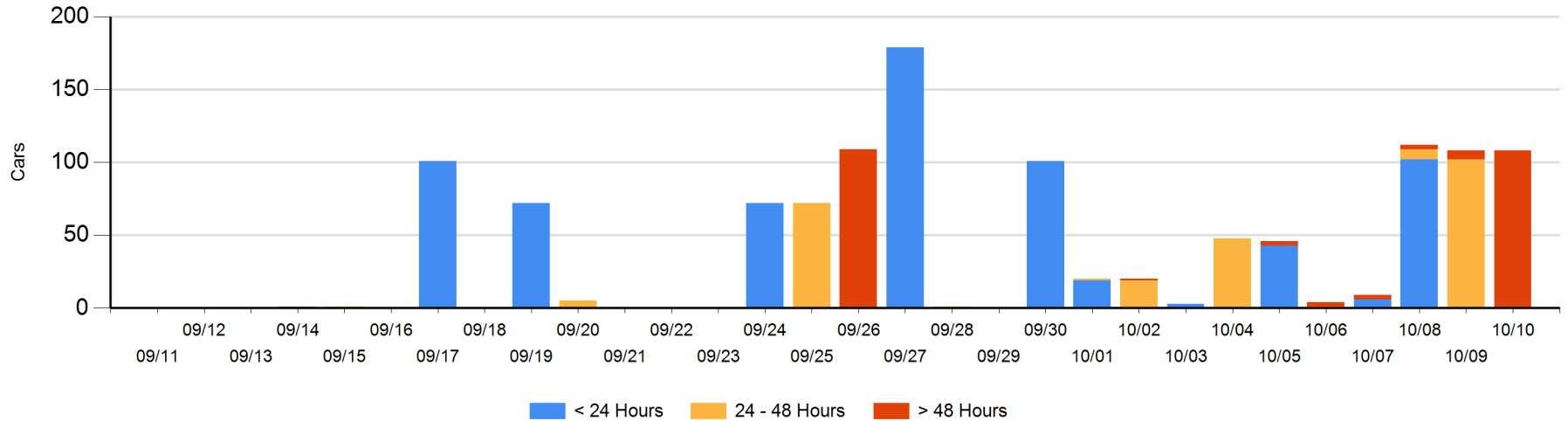
Today

	< 24 Hrs	24 - 48 Hrs	> 48-72 Hrs	> 72 Hrs	Total On Hand
CN			102	6	108

Change in Last 24 Hours

	< 24 Hrs	24-48 Hrs	48 - 72 Hrs	> 72 Hrs
CN		-102	96	6

Loaded Cars on Hand Prince Rupert Waiting for Placement - Last 30 Days All Railways



Port Terminal Status

Thunder Bay

Daily Activity for 10/10/2018

	Cars Arrived	Cars Received in Interchange	Cars Delivered in Interchange	Cars Placed for Unloading	Loads on Wheels at Destination As of 10/10/2018
CN				34	31
CP				142	122

Port Unloads

	10/10	10/09	Week To Date	Last Week
CN	84	128	387	612
CP	211	253	653	1,424

Age Profile of Loaded Cars Waiting Placement for Unloading

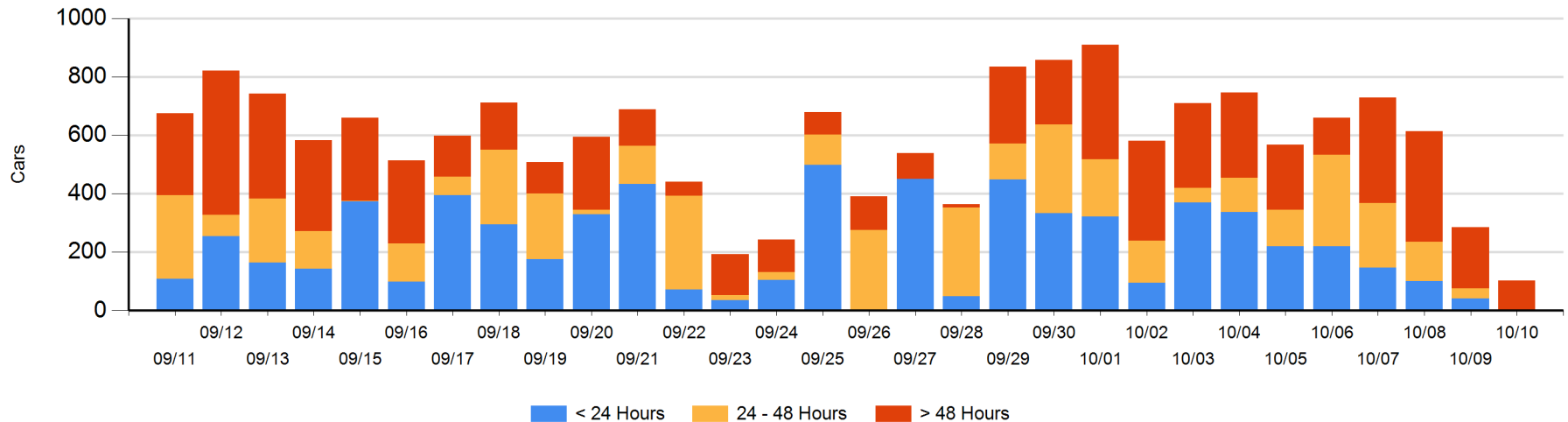
Today

	< 24 Hrs	24 - 48 Hrs	> 48-72 Hrs	> 72 Hrs	Total On Hand
CN					0
CP		1		101	102

Change in Last 24 Hours

	< 24 Hrs	24-48 Hrs	48 - 72 Hrs	> 72 Hrs
CN		-34		-9
CP	-42	1	-28	-72

Loaded Cars on Hand Thunder Bay Waiting for Placement - Last 30 Days All Railways



Measurement Definitions

Loads on Wheels	<p>Count of loaded rail cars including all rail cars that have been released loaded at origin and have not been reported by the railway as unloaded at destination.</p> <p>Counts include all rail cars (hopper cars and boxcars) moving within a pipeline.</p>
Loads Not Moving	<p>Loaded rail cars for which the railways have not reported a movement event for 48 hours or more whether the rail car is at origin, enroute or at destination.</p>
Port Unloads	<p>Count of rail cars reported by railways as unloaded at the western port destinations of Vancouver, Prince Rupert and Thunder Bay.</p> <p>Unload counts include all rail cars (hopper cars and boxcars) unloaded by all receivers including major port terminals, transloaders and other receivers.</p>
Cars Arrived	<p>Count of rail cars reported as arrived at the destination railway terminal.</p>
Cars Received in Interchange	<p>Count of rail cars received in interchange by each railway within a destination railway terminal. Interchange activity is tracked for the Vancouver and Thunder Bay pipelines as applicable.</p>
Cars Delivered in Interchange	<p>Count of rail cars delivered in interchange by each railway within a destination railway terminal. Interchange activity is tracked for the Vancouver and Thunder Bay pipelines as applicable.</p>
Cars Placed for Unloading	<p>Count of rail cars reported by the railways as placed loaded at the receiver's facility for unloading.</p>
Loads on Wheels at Destination	<p>Count of rail cars that remain under load within the destination railway terminal including rail cars that have been reported as placed for unloading but not yet reported as unloaded.</p>
Waiting Placement for Unloading	<p>Count of rail cars that have been reported as arrived at the destination railway terminal but not reported as placed for unloading by the railway.</p> <p>For the Ports of Vancouver, Prince Rupert and Thunder Bay the count of rail cars waiting placement for unloading is categorized by age – i.e. the elapsed time from arrival at destination to the current report date.</p>