

SPEED READ

- Loads on wheels decreased slightly overnight, reflecting a decline in both CN and CP volumes. On a net basis, volumes fell due to lower traffic in the Vancouver, USA/MEX and E. Canada corridors offset by higher traffic in the Thunder Bay and Prince Rupert corridors.
- Network fluidity improved overnight, led by a decline in idle car counts on both CN and CP by 9% (-82) and 36% (-387), respectively. The total count of cars for 4+ days on both railways decreased for the third consecutive day, down 35% (-315) overnight - currently at 580 cars.
- Four days in Week 11 unloads now ahead of prior week's performance by more than 500 unloads, marking improved week over week performance at Vancouver offset by reduced unloads at Thunder Bay and Prince Rupert.

Loads on Wheels

- Loads on wheels decreased marginally by 1% (-74) overnight, due to lower traffic on both CN and CP - combined total at 10,829 and 4% above the trailing 30-day average.
- On a net basis, the decline in loads on wheels indicates lower traffic in the Vancouver, USA/MEX and E. Canada corridors offset by higher traffic in the Thunder Bay and Prince Rupert corridors.
- CN volumes declined marginally by 1% (-35) overnight, with reduced traffic in the USA/MEX, Thunder Bay and E. Canada corridors offset by higher traffic in the Vancouver and Prince Rupert corridors. System wide CN loads on wheels presently at 5,656 and 12% above the trailing 30-day average.
- CP volumes fell 3% (-130) overnight and have now decreased for the third consecutive day, driven by a decline in traffic across all corridors other than Thunder Bay. CP system wide loads on wheels presently at 4,691 and 7% below the trailing 30-day average.
- Vancouver now at 6,516, decreased slightly by 2% (-112) overnight, now 14% above the trailing 30-day average.
- The Prince Rupert pipeline now at 1,245, increased marginally by 1% (+16) overnight and 19% below the trailing 30 day-average.
- Thunder Bay volumes rose 7% (+104) overnight - currently at 1,625 and 5% below the trailing 30-day average, with 76% of traffic moving on CP.

Hopper Car Rationing

- No hopper car rationing was reported for either CN or CP in week 10.

Loads Not Moving

- **The count of cars not moving for 48+ hours declined 23% (-469) overnight and have now decreased for four consecutive days, reflecting lower counts on both CN and CP. Idle car counts presently at 1,542 and 21% below the trailing 30 day-average.**
- CN
 - **The count of idle cars for 48+ hours fell 9% (-82) overnight and have now decreased for the third consecutive day - presently at 852 cars.**
 - The number of cars idle for 4+ days decreased 21% (-118) overnight - currently at 444 cars.
 - The count of cars not moving for 7+ days rose 16% (+18) overnight - presently at 128 cars.
 - Vancouver represents 33% of all idle cars.
 - In total 54% of all idle cars are dwelling at origin locations.
- CP
 - **CP idle car counts for 48+ hours decreased for the fourth consecutive day, down 36% (-387) overnight - now at 690 cars.**
 - The number of cars idle for 4+ days declined significantly by 59% (-197) overnight and have now decreased for the third consecutive day - now at 136 cars, the lowest seen in the last 30 days.

- The number of cars idle for 7+ days decreased significantly by 54% (-95) overnight - presently at 82 cars.
- Vancouver accounts for 59% of all idle cars.
- In total 73% of all idle cars are dwelling at origin locations.

Port Performance

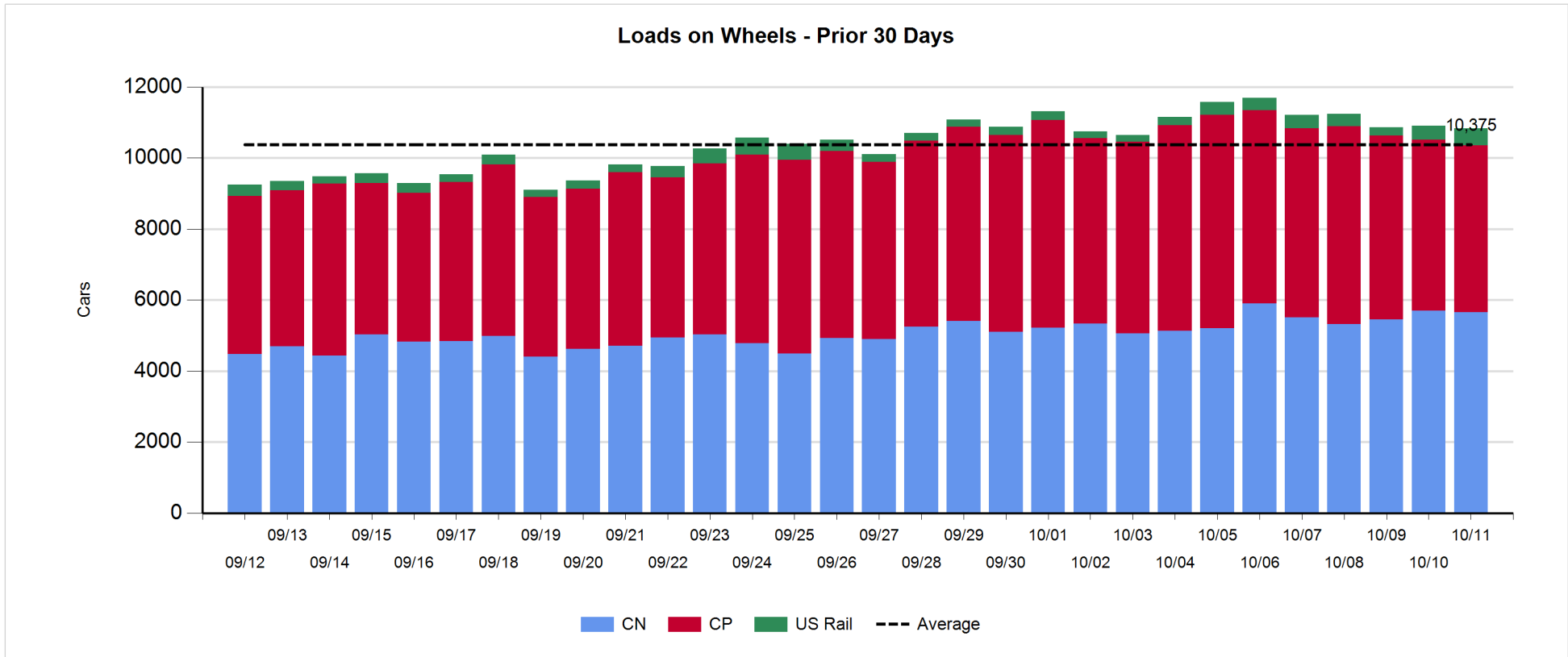
- CN and CP reported a total of 1,168 cars unloaded at the three major ports, now in line with the trailing 30-day average. Four days in Week 11 unloads are tracking ahead of last week's pace by more than 500 unloads, marking higher unloads at Vancouver offset by reduced unloads at Thunder Bay and Prince Rupert.
- Vancouver
 - 916 unloads reported by CN and CP at the Port of Vancouver; CN - 471 and CP - 445. Four days in Week 11 unloads are tracking ahead of last week's performance by more than 700 unloads.
 - There are more than 1,250 cars on site at Vancouver with 850 cars arriving at the port in the last 24 hours.
 - CN and CP have nearly 1,100 cars in British Columbia en route to Vancouver, with 600 cars at Kamloops and west, and 71% of traffic moving on CP.
- Prince Rupert
 - Prince Rupert reported 92 unloads, now behind last week's unloads after four days by more than 50 unloads.
 - Loads on wheels now above 1,000 cars - presently at 1,238 cars.
 - There are 500 cars west of Jasper en route to Prince Rupert.
 - There are more than 50 cars on site at Prince Rupert with about 50 cars arriving at the port in the last 24 hours. Given the structure of the pipeline, there appears to be sufficient cars available to support unloads in the next few days.
- Thunder Bay
 - 160 unloads were reported at Thunder Bay yesterday. Four days in Week 11 unloads are tracking behind last week's pace by 150 unloads.
 - There are more than 250 cars on site at Thunder Bay with more than 250 cars arriving at the port in the prior 24 hours.
 - There are 150 cars en route to Thunder Bay from Winnipeg and east. Cars on hand and those en route should support unloads in the next few days.

Daily Loads on Wheels - 10/11/2018

	E Canada	Prince Rupert	Thunder Bay	USA/MEX	Vancouver	Total
CN	237	1,238	384	297	3,500	5,656
CP	121	7	1,241	363	2,959	4,691
Short Line	8				57	65
US Rail				417		417
	366	1,245	1,625	1,077	6,516	10,829

Change in Loads on Wheels - Prior 24 Hours

	E Canada	Prince Rupert	Thunder Bay	USA/MEX	Vancouver	Total
CN	-25	9	-52	-153	186	-35
CP	-1	7	156	-17	-275	-130
Short Line	-6				-23	-29
US Rail				120		120
	-32	16	104	-50	-112	-74



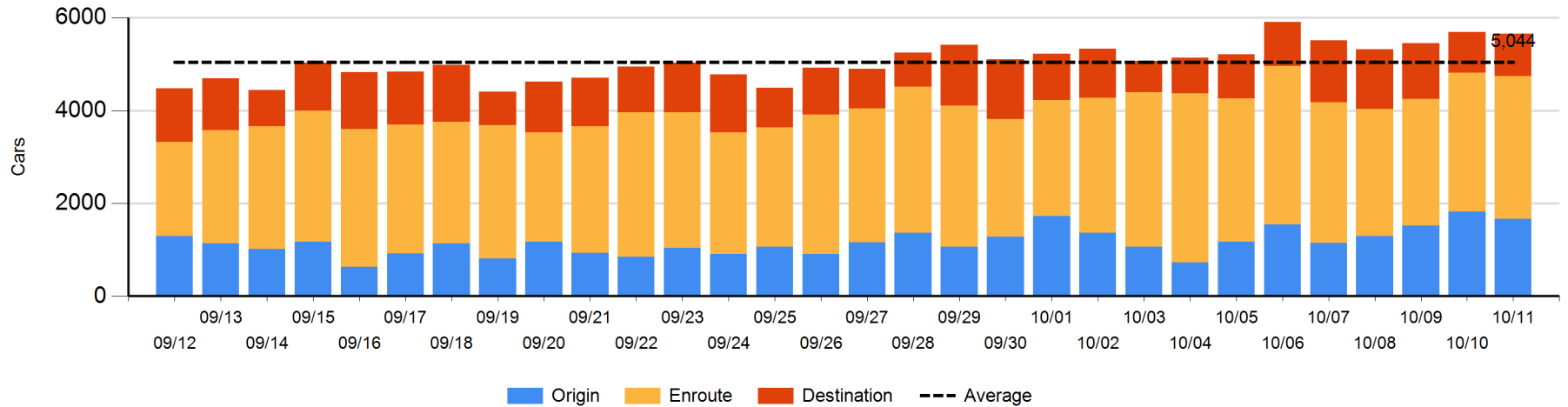
Daily Loads on Wheels By Pipeline Location - 10/11/2018

	E Canada	Prince Rupert	Thunder Bay	USA/MEX	Vancouver	Total
CN						
Origin	53	349	162	91	1,014	1,669
Enroute	164	813	185	114	1,801	3,077
Destination	20	76	37	92	685	910
	237	1,238	384	297	3,500	5,656
CP						
Origin	4	7	535	75	807	1,428
Enroute	113		473	286	1,618	2,490
Destination	4		233	2	534	773
	121	7	1,241	363	2,959	4,691
US Rail / Short Line						
Origin						
Enroute	3			233		236
Destination	5			184	57	246
	8			417	57	482

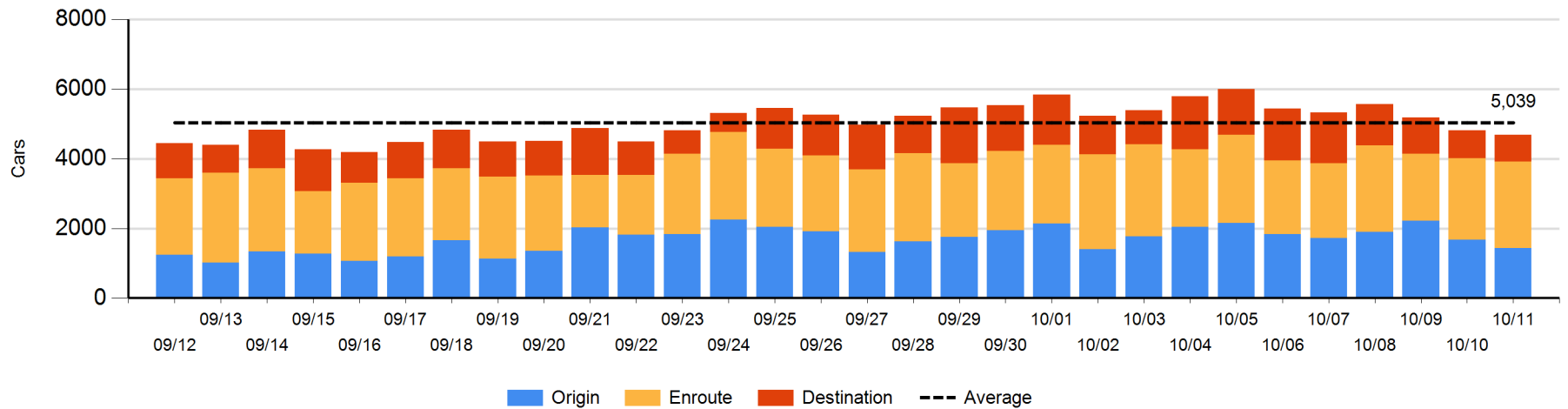
Change in Daily Loads on Wheels By Pipeline Location - Prior 24 Hours

	E Canada	Prince Rupert	Thunder Bay	USA/MEX	Vancouver	Total
CN						
Origin	2	-20	-128	-2	1	-147
Enroute	-15	82	70	-177	122	82
Destination	-12	-53	6	26	63	30
	-25	9	-52	-153	186	-35
CP						
Origin	-41	7	-50	3	-166	-247
Enroute	40		95	-13	23	145
Destination	0		111	-7	-132	-28
	-1	7	156	-17	-275	-130
US Rail / Short Line						
Origin						
Enroute	-5			108		103
Destination	-1			12	-23	-12
	-6			120	-23	91

CN Loads on Wheels by Pipeline Location - 10/11/2018



CP Loads on Wheels by Pipeline Location - 10/11/2018

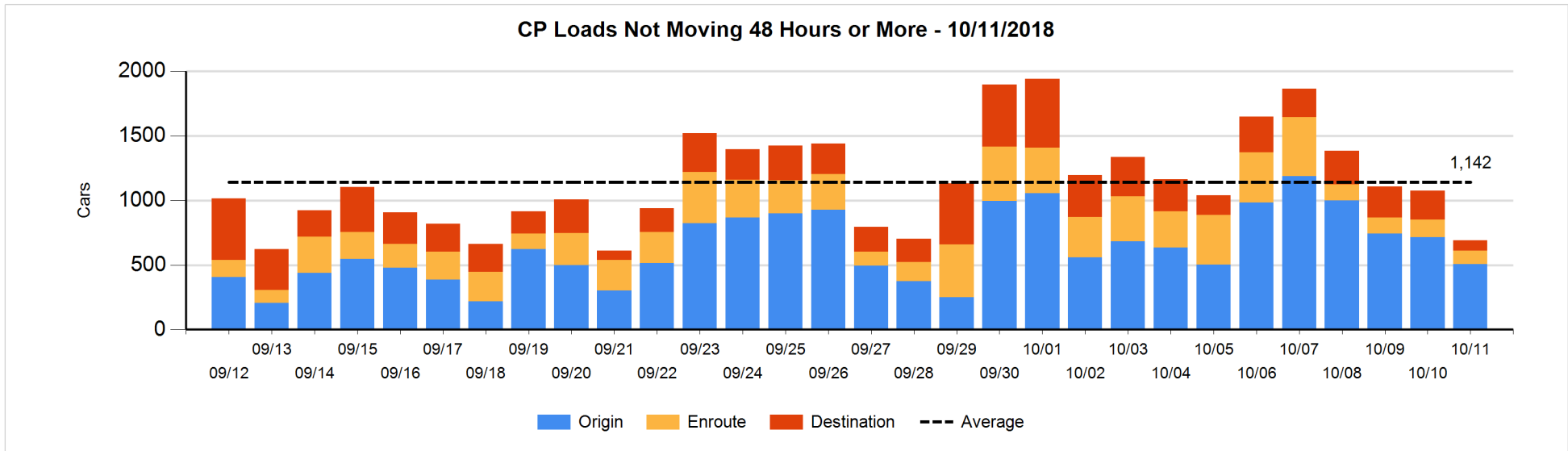
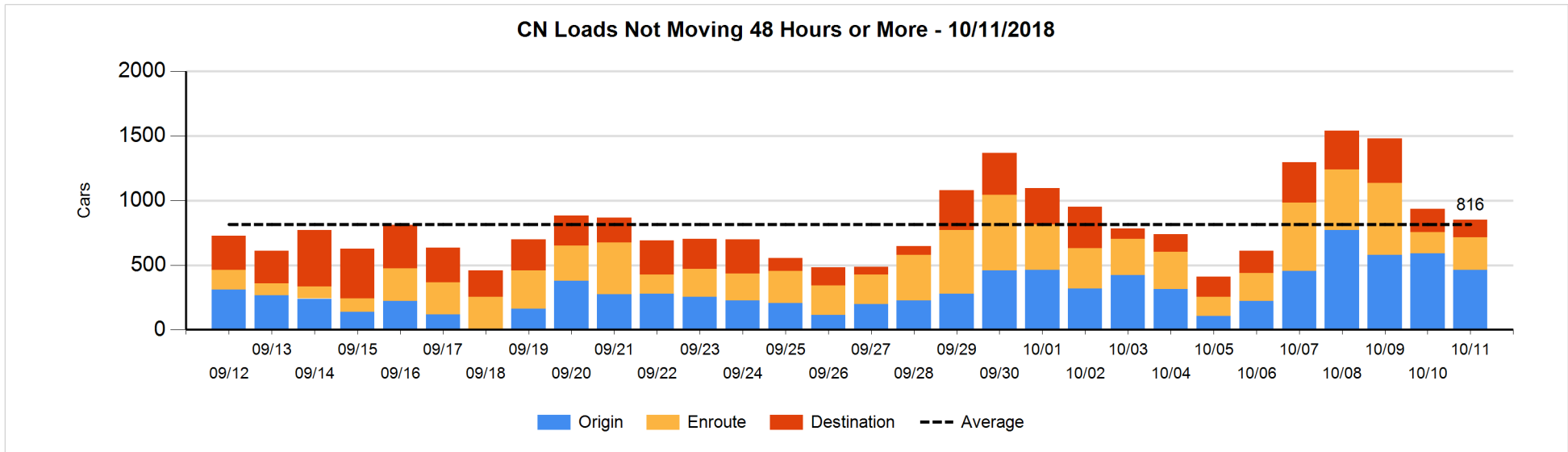


Loads Not Moving 48 Hours or More - 10/11/2018

	E Canada	Prince Rupert	Thunder Bay	USA/MEX	Vancouver	Total
CN						
Origin	51	147	96	59	111	464
Enroute	29	124		38	60	251
Destination	5	8	6	5	113	137
	85	279	102	102	284	852
CP						
Origin	3		133	31	340	507
Enroute			44	54	7	105
Destination	4		11	2	61	78
	7		188	87	408	690
US Rail / Short Line						
Origin						
Enroute	3			22		25
Destination				48	4	52
	3			70	4	77

Change in Loads Not Moving 48 Hours or More - 10/11/2018

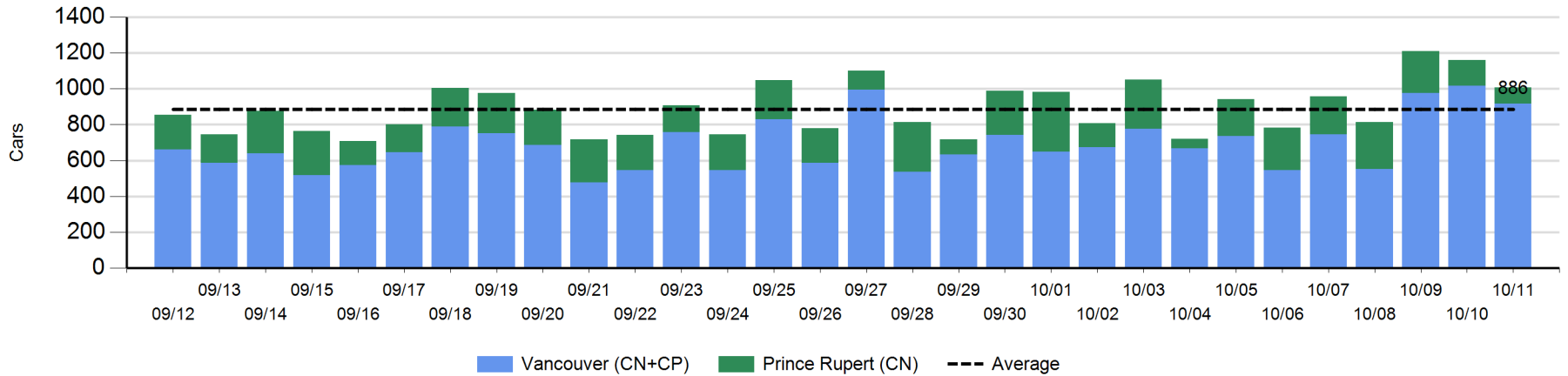
	E Canada	Prince Rupert	Thunder Bay	USA/MEX	Vancouver	Total
CN						
Origin	51	1	0	12	-189	-125
Enroute	9	73		2	0	84
Destination	4	-121	-12	-1	89	-41
	64	-47	-12	13	-100	-82
CP						
Origin	-38		-283	4	109	-208
Enroute	-52		21	3	-2	-30
Destination	4		-86	0	-67	-149
	-86		-348	7	40	-387
US Rail / Short Line						
Origin						
Enroute	0			-14		-14
Destination				0	-22	-22
	0			-14	-22	-36



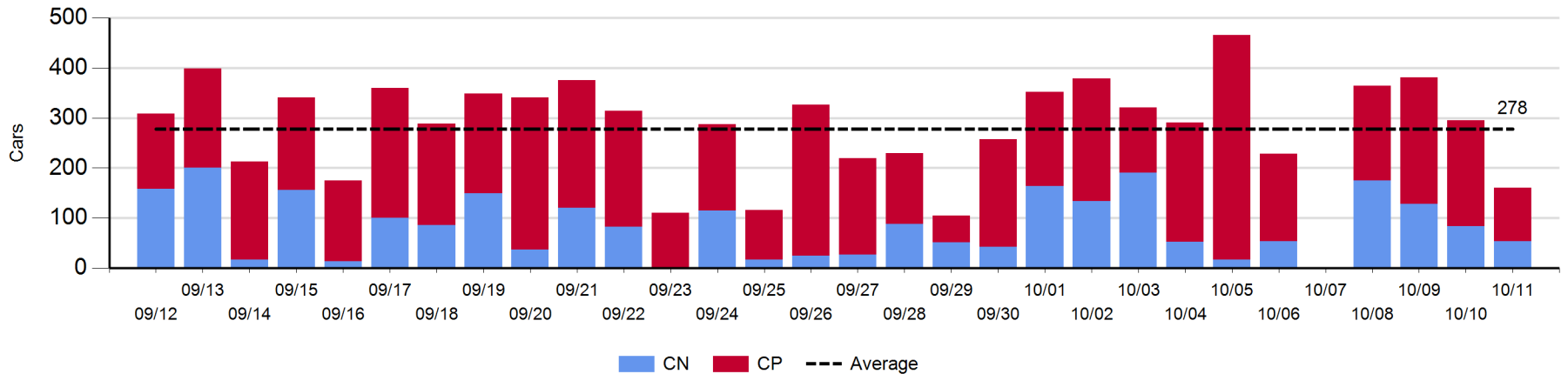
Port Unloads - 10/11/2018

	Prince Rupert	Vancouver	West Coast Total	Thunder Bay	Total
CN	92	471	563	54	617
CP		445	445	106	551
	92	916	1,008	160	1,168

West Coast Port Unloads - Prior 30 Days



Thunder Bay Port Unloads - Prior 30 Days



Port Terminal Status

Vancouver

Daily Activity for 10/11/2018

	Cars Arrived	Cars Received in Interchange	Cars Delivered in Interchange	Cars Placed for Unloading	Loads on Wheels at Destination As of 10/11/2018
CN	367	212	300	461	685
CP	483	300	214	362	534
SRY		2		18	57

Port Unloads

	10/11	10/10	Week To Date	Last Week
CN	471	566	1,560	1,982
CP	445	452	1,902	2,817
SRY	23	6	55	49

Age Profile of Loaded Cars Waiting Placement for Unloading

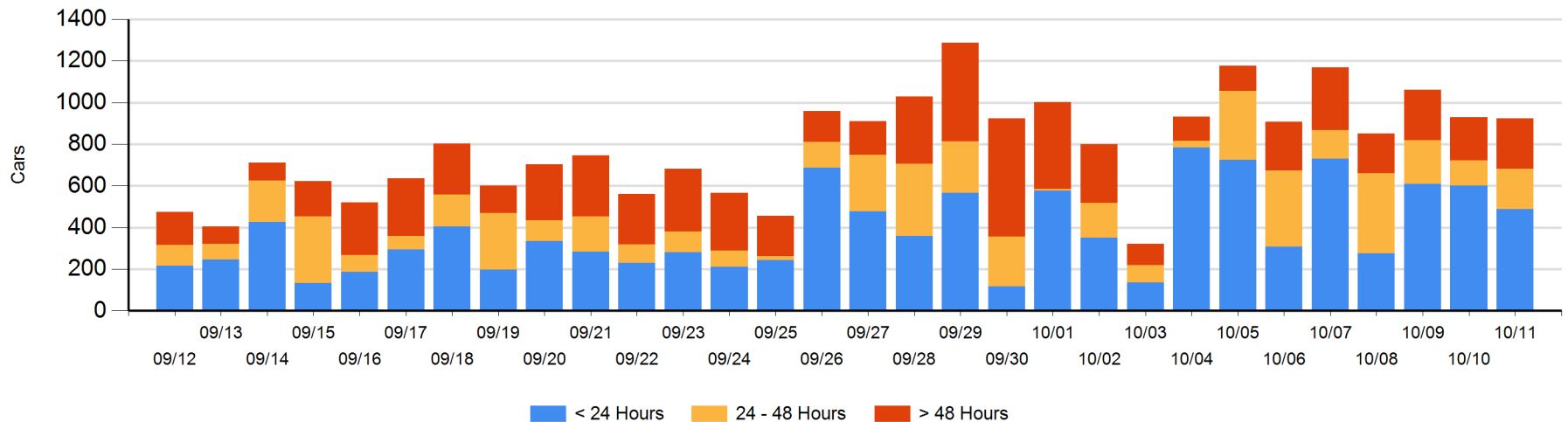
Today

	< 24 Hrs	24 - 48 Hrs	> 48-72 Hrs	> 72 Hrs	Total On Hand
CN	132	61	60	14	267
CP	356	133	15	152	656
SRY					0

Change in Last 24 Hours

	< 24 Hrs	24-48 Hrs	48 - 72 Hrs	> 72 Hrs
CN	-22	-16	48	9
CP	-91	88	-120	98
SRY				

Loaded Cars on Hand Vancouver Waiting for Placement - Last 30 Days All Railways



Port Terminal Status

Prince Rupert

Daily Activity for 10/11/2018

	Cars Arrived	Cars Received in Interchange	Cars Delivered in Interchange	Cars Placed for Unloading	Loads on Wheels at Destination As of 10/11/2018
CN	39			140	76

Port Unloads

	10/11	10/10	Week To Date	Last Week
CN	92	143	732	1,446

Age Profile of Loaded Cars Waiting Placement for Unloading

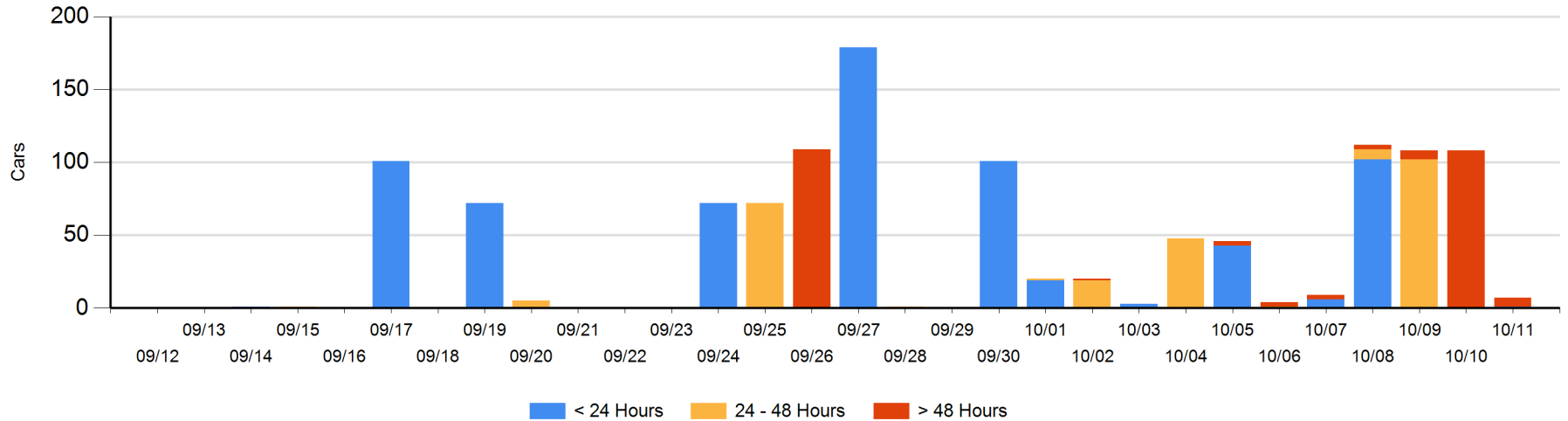
Today

	< 24 Hrs	24 - 48 Hrs	> 48-72 Hrs	> 72 Hrs	Total On Hand
CN	1			6	7

Change in Last 24 Hours

	< 24 Hrs	24-48 Hrs	48 - 72 Hrs	> 72 Hrs
CN	1		-102	0

Loaded Cars on Hand Prince Rupert Waiting for Placement - Last 30 Days All Railways



Port Terminal Status

Thunder Bay

Daily Activity for 10/11/2018

	Cars Arrived	Cars Received in Interchange	Cars Delivered in Interchange	Cars Placed for Unloading	Loads on Wheels at Destination As of 10/11/2018
CN	60			68	37
CP	217			92	233

Port Unloads

	10/11	10/10	Week To Date	Last Week
CN	54	84	441	612
CP	106	211	759	1,424

Age Profile of Loaded Cars Waiting Placement for Unloading

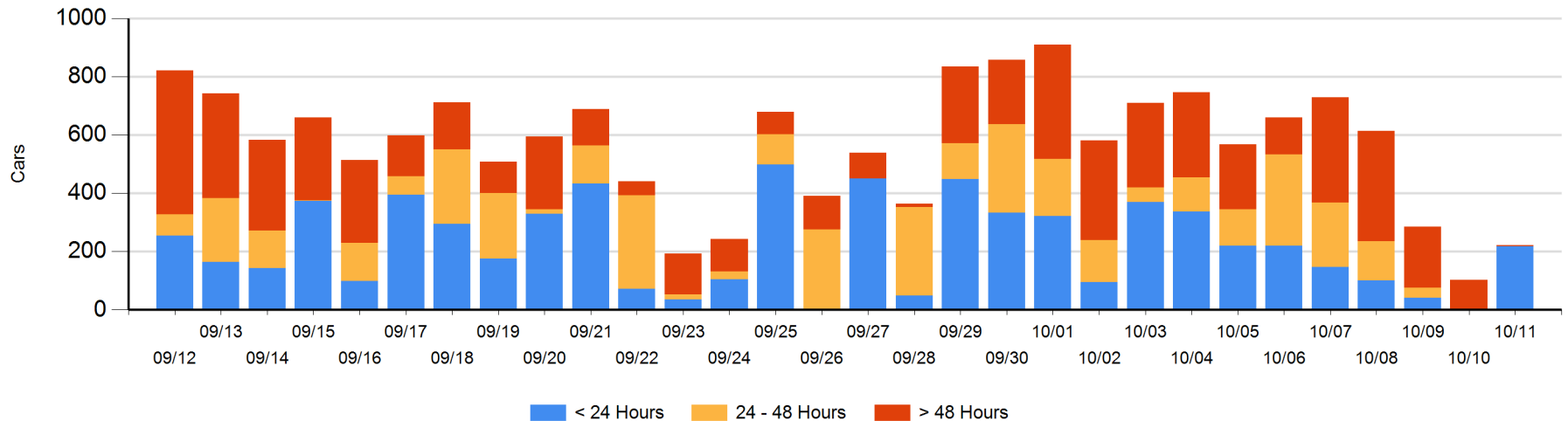
Today

	< 24 Hrs	24 - 48 Hrs	> 48-72 Hrs	> 72 Hrs	Total On Hand
CN	1				1
CP	217		1	2	220

Change in Last 24 Hours

	< 24 Hrs	24-48 Hrs	48 - 72 Hrs	> 72 Hrs
CN	1			
CP	217	-1	1	-99

Loaded Cars on Hand Thunder Bay Waiting for Placement - Last 30 Days All Railways



Measurement Definitions

Loads on Wheels	<p>Count of loaded rail cars including all rail cars that have been released loaded at origin and have not been reported by the railway as unloaded at destination.</p> <p>Counts include all rail cars (hopper cars and boxcars) moving within a pipeline.</p>
Loads Not Moving	<p>Loaded rail cars for which the railways have not reported a movement event for 48 hours or more whether the rail car is at origin, enroute or at destination.</p>
Port Unloads	<p>Count of rail cars reported by railways as unloaded at the western port destinations of Vancouver, Prince Rupert and Thunder Bay.</p> <p>Unload counts include all rail cars (hopper cars and boxcars) unloaded by all receivers including major port terminals, transloaders and other receivers.</p>
Cars Arrived	<p>Count of rail cars reported as arrived at the destination railway terminal.</p>
Cars Received in Interchange	<p>Count of rail cars received in interchange by each railway within a destination railway terminal. Interchange activity is tracked for the Vancouver and Thunder Bay pipelines as applicable.</p>
Cars Delivered in Interchange	<p>Count of rail cars delivered in interchange by each railway within a destination railway terminal. Interchange activity is tracked for the Vancouver and Thunder Bay pipelines as applicable.</p>
Cars Placed for Unloading	<p>Count of rail cars reported by the railways as placed loaded at the receiver's facility for unloading.</p>
Loads on Wheels at Destination	<p>Count of rail cars that remain under load within the destination railway terminal including rail cars that have been reported as placed for unloading but not yet reported as unloaded.</p>
Waiting Placement for Unloading	<p>Count of rail cars that have been reported as arrived at the destination railway terminal but not reported as placed for unloading by the railway.</p> <p>For the Ports of Vancouver, Prince Rupert and Thunder Bay the count of rail cars waiting placement for unloading is categorized by age – i.e. the elapsed time from arrival at destination to the current report date.</p>