

SPEED READ

- Loads on wheels decreased marginally overnight, reflecting lower CP volumes offset by an increase in CN volumes. On a net basis, volumes fell due to reduced volumes in the Vancouver, E. Canada and Prince Rupert corridors offset by higher traffic in the Thunder Bay and USA/MEX corridors.
- Network fluidity deteriorated overnight, led by a rise in idle car counts on both CN and CP by 43% (+228) and (+5), respectively. The total count of cars for 4+ days on both railways decreased 26% (-323) overnight - presently at 943 cars.
- Three days in Week 13 unloads now behind prior week's performance by 750 unloads, marking lower unloads across all three major ports - Vancouver, Thunder Bay and Prince Rupert.

Loads on Wheels

- Loads on wheels declined slightly by 2% (-205) overnight, due to reduced volumes on CP offset by higher volumes on CN - combined total at 10,754 and 2% below the trailing 30-day average.
- On a net basis, the decline in loads on wheels reflects reduced volumes in the Vancouver, E. Canada and Prince Rupert corridors offset by higher traffic in the Thunder Bay and USA/MEX corridors.
- CN volumes gained marginally by 1% (+58) overnight, with higher traffic in the Thunder Bay corridor offset by reduced traffic in the Vancouver, Prince Rupert and USA/MEX corridors. System wide CN loads on wheels presently at 5,352 and in line with the trailing 30-day average.
- CP volumes decreased 4% (-235) overnight, driven by a decline in volumes across all corridors other than USA/MEX. CP system wide loads on wheels presently at 5,205 and 3% below the trailing 30-day average.
- Vancouver now at 6,660, fell 4% (-277) overnight, now 3% above the trailing 30-day average.
- The Prince Rupert pipeline now at 1,372, fell slightly by 1% (-7) overnight and have now decreased for the fourth consecutive day, and 9% below the trailing 30 day-average.
- Thunder Bay volumes gained 5% (+62) overnight - now at 1,312 and 23% below the trailing 30-day average, with 87% of traffic moving on CP.

Hopper Car Rationing

- No hopper car rationing was reported for either CN or CP in week 11.

Loads Not Moving

- **The count of cars not moving for 48+ hours rose 11% (+233) overnight, reflecting higher counts on both CN and CP. Idle car counts presently at 2,443 and 16% above the trailing 30-day average.**
- CN
 - **The count of idle cars for 48+ hours increased 43% (+228) overnight - currently at 763 cars.**
 - The number of cars idle for 4+ days declined 18% (-28) overnight - now at 131 cars.
 - The count of cars not moving for 7+ days declined 12% (-11) overnight - currently at 83 cars.
 - Vancouver represents 71% of all idle cars.
 - In total 71% of all idle cars are dwelling at origin locations.
- CP
 - **CP idle car counts for 48+ hours increased slightly (+5) overnight - presently at 1,680 cars.**
 - The number of cars idle for 4+ days fell 27% (-295) overnight - presently at 812 cars.

- The number of cars idle for 7+ days increased for the fourth consecutive day, up 15% (+36) overnight - presently at 271 cars, the highest seen in the last 30 days.
- Vancouver accounts for 61% of all idle cars.
- In total 74% of all idle cars are dwelling at origin locations.

Port Performance

- CN and CP reported a total of 1,362 cars unloaded at the three major ports, now 10% above the trailing 30-day average. Three days in Week 13 unloads are tracking behind last week's pace by 750 unloads, marking lower unloads across all three major ports - Vancouver, Thunder Bay and Prince Rupert.
- Vancouver
 - 955 unloads reported by CN and CP at the Port of Vancouver; CN - 539 and CP - 416. Three days in Week 13 unloads are tracking behind last week's performance by 450 unloads.
 - There are more than 1,400 cars on site at Vancouver with more than 950 cars arriving at the port in the last 24 hours.
 - CN and CP have about 850 cars in British Columbia en route to Vancouver, with 400 cars at Kamloops and west, and 65% of traffic moving on CP.
- Prince Rupert
 - Prince Rupert reported 206 unloads, now behind last week's unloads after three days by about 200 unloads.
 - Loads on wheels now above 1,000 cars - now at 1,372 cars.
 - There are 650 cars west of Jasper en route to Prince Rupert.
 - There are 250 cars on site at Prince Rupert with more than 300 cars arriving at the port in the last 24 hours. Given the structure of the pipeline, there appears to be sufficient cars available to support unloads in the next few days.
- Thunder Bay
 - 201 unloads were reported at Thunder Bay yesterday. Three days in Week 13 unloads are tracking behind last week's pace by around 150 unloads.
 - There are 200 cars on site at Thunder Bay with more than 100 cars arriving at the port in the prior 24 hours.
 - There are more than 200 cars en route to Thunder Bay from Winnipeg and east. Cars on hand and those en route should support unloads in the next few days.

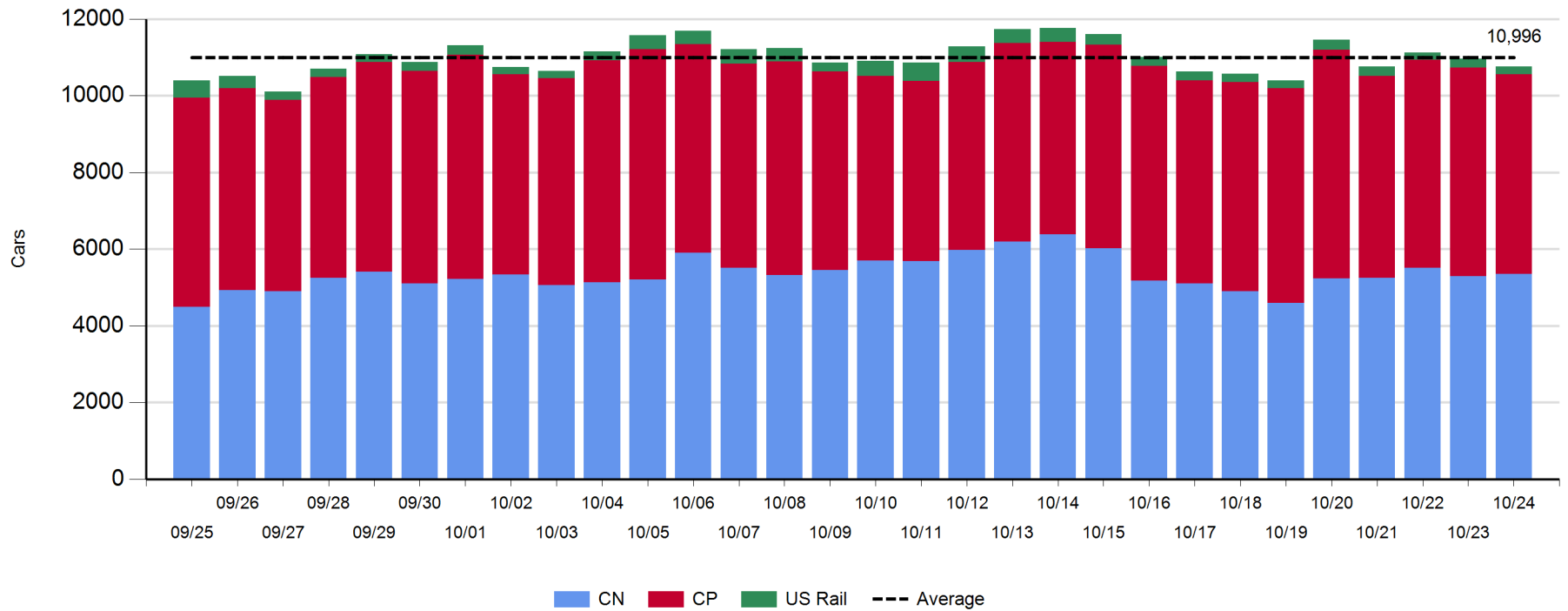
Daily Loads on Wheels - 10/24/2018

	E Canada	Prince Rupert	Thunder Bay	USA/MEX	Vancouver	Total
CN	336	1,372	171	256	3,217	5,352
CP	108		1,141	538	3,418	5,205
Short Line	16				25	41
US Rail				156		156
	460	1,372	1,312	950	6,660	10,754

Change in Loads on Wheels - Prior 24 Hours

	E Canada	Prince Rupert	Thunder Bay	USA/MEX	Vancouver	Total
CN	0	-7	150	-7	-78	58
CP	-25		-88	89	-211	-235
Short Line	-3				12	9
US Rail				-37		-37
	-28	-7	62	45	-277	-205

Loads on Wheels - Prior 30 Days

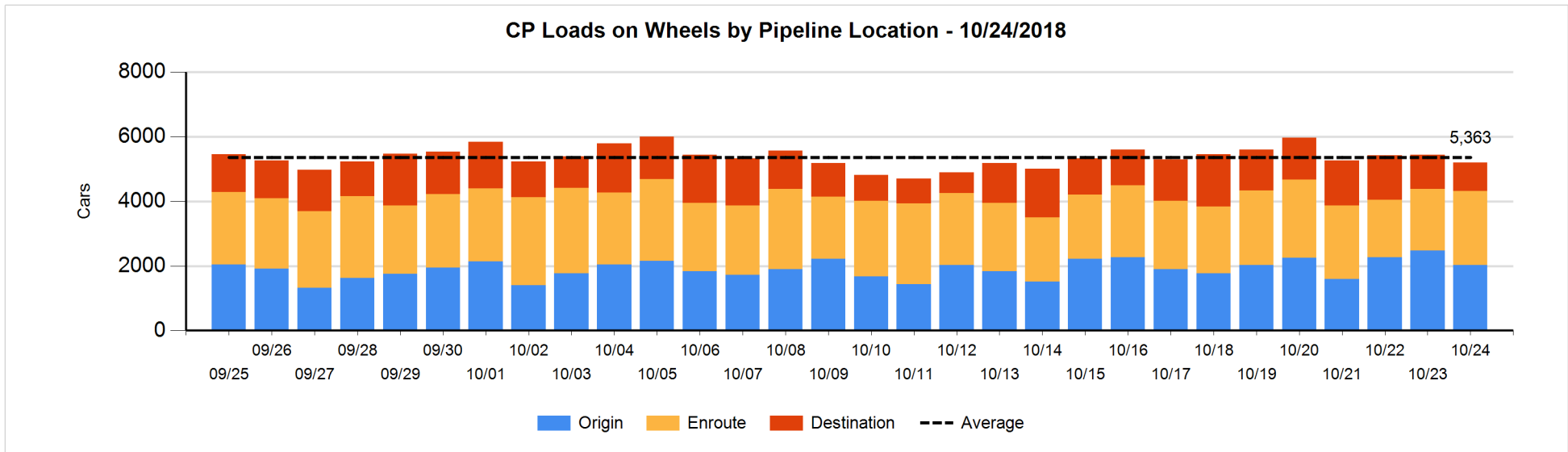
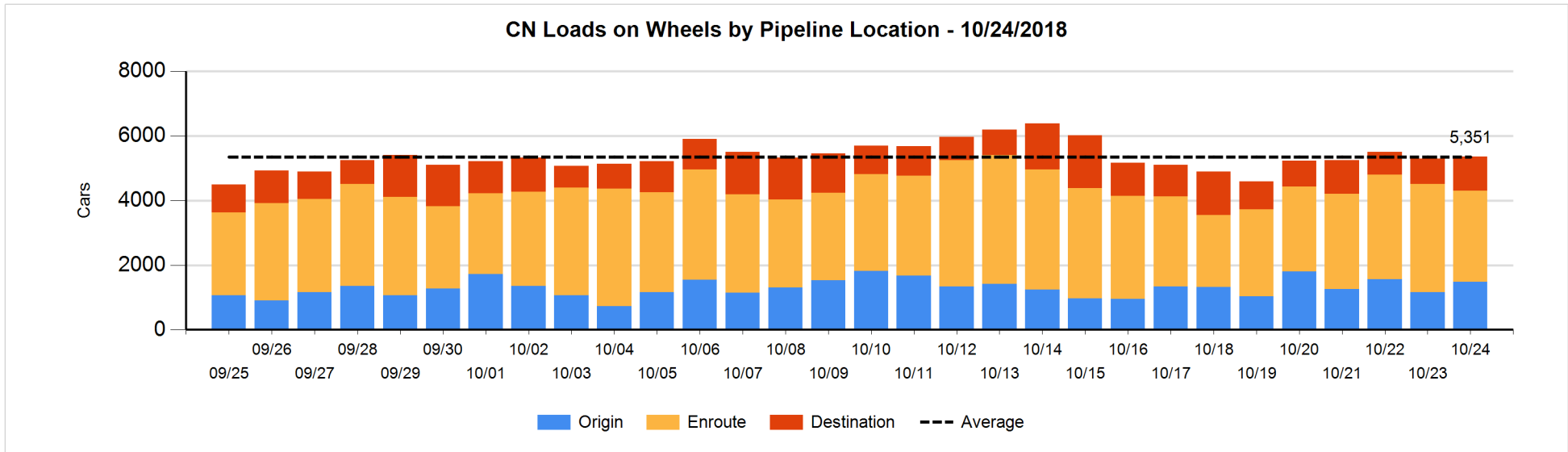


Daily Loads on Wheels By Pipeline Location - 10/24/2018

	E Canada	Prince Rupert	Thunder Bay	USA/MEX	Vancouver	Total
CN						
Origin	3	302	89	31	1,058	1,483
Enroute	267	829	75	213	1,433	2,817
Destination	66	241	7	12	726	1,052
	336	1,372	171	256	3,217	5,352
CP						
Origin	93		508	213	1,217	2,031
Enroute	14		430	312	1,527	2,283
Destination	1		203	13	674	891
	108		1,141	538	3,418	5,205
US Rail / Short Line						
Origin						
Enroute	9			96		105
Destination	7			60	25	92
	16			156	25	197

Change in Daily Loads on Wheels By Pipeline Location - Prior 24 Hours

	E Canada	Prince Rupert	Thunder Bay	USA/MEX	Vancouver	Total
CN						
Origin	0	200	89	-93	121	317
Enroute	-65	-316	62	97	-300	-522
Destination	65	109	-1	-11	101	263
	0	-7	150	-7	-78	58
CP						
Origin	0		-191	102	-348	-437
Enroute	-25		174	-11	238	376
Destination	0		-71	-2	-101	-174
	-25		-88	89	-211	-235
US Rail / Short Line						
Origin						
Enroute	0			-25		-25
Destination	-3			-12	12	-3
	-3			-37	12	-28

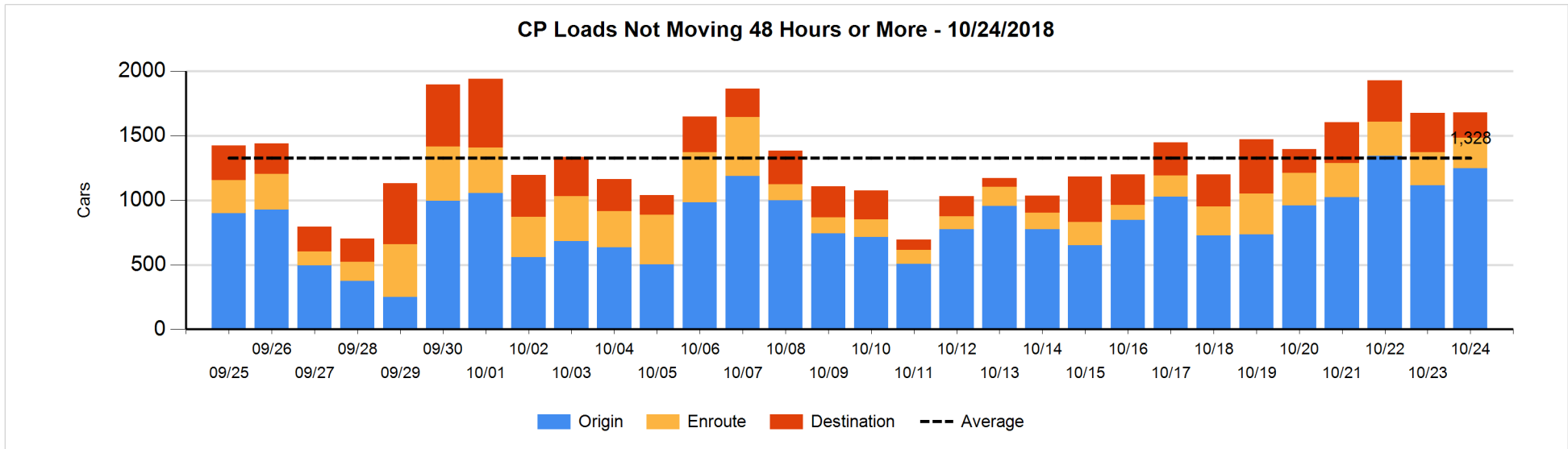
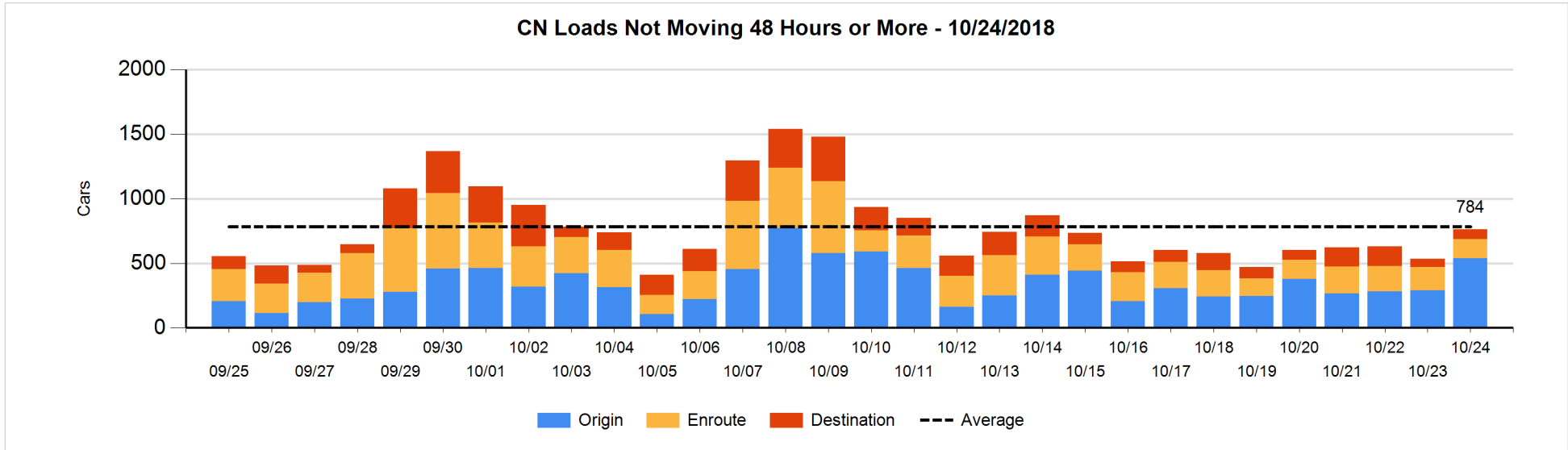


Loads Not Moving 48 Hours or More - 10/24/2018

	E Canada	Prince Rupert	Thunder Bay	USA/MEX	Vancouver	Total
CN						
Origin	3	102		9	425	539
Enroute	10	37		50	49	146
Destination	1	1	3	2	71	78
	14	140	3	61	545	763
CP						
Origin	85		367	32	764	1248
Enroute	6		24	64	144	238
Destination	1		63	13	117	194
	92		454	109	1025	1680
US Rail / Short Line						
Origin						
Enroute	6			23		29
Destination				36	1	37
	6			59	1	66

Change in Loads Not Moving 48 Hours or More - 10/24/2018

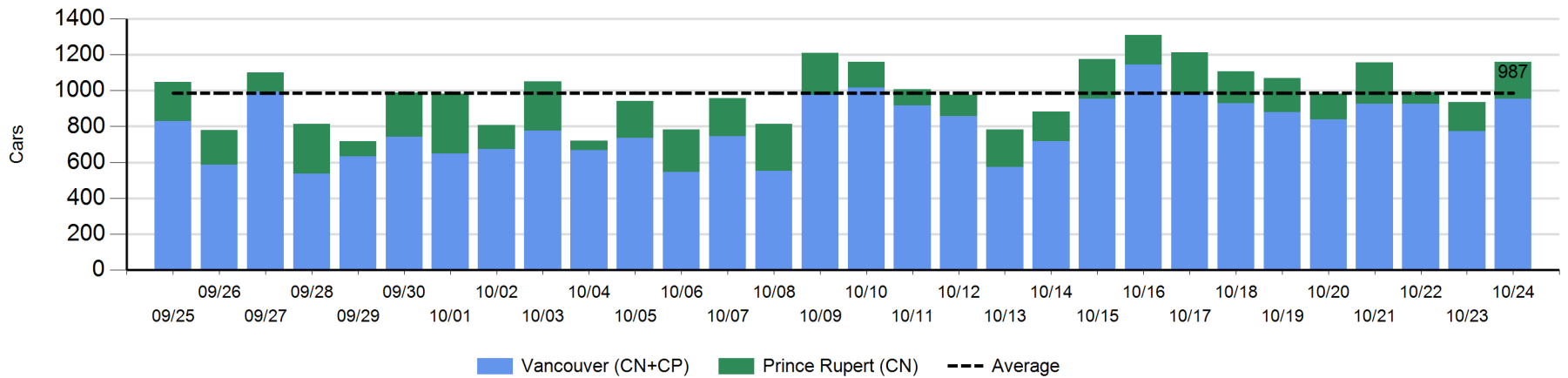
	E Canada	Prince Rupert	Thunder Bay	USA/MEX	Vancouver	Total
CN						
Origin	3	0		4	242	249
Enroute	-7	-42		0	15	-34
Destination	0	0	-4	-14	31	13
	-4	-42	-4	-10	288	228
CP						
Origin	78		95	5	-45	133
Enroute	-13		1	-7	-1	-20
Destination	0		-85	8	-31	-108
	65		11	6	-77	5
US Rail / Short Line						
Origin						
Enroute	-3			-2		-5
Destination				-5	-5	-10
	-3			-7	-5	-15



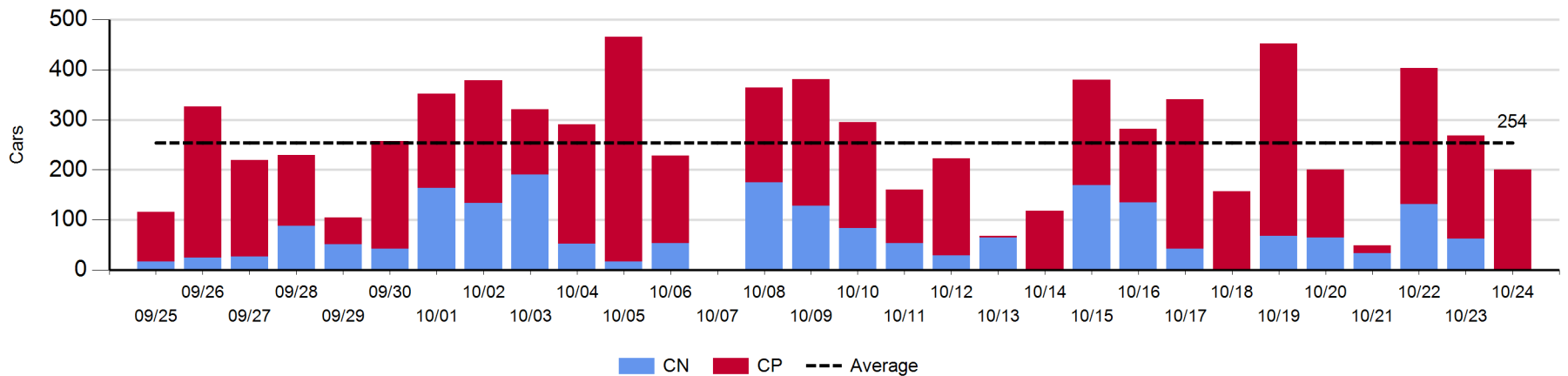
Port Unloads - 10/24/2018

	Prince Rupert	Vancouver	West Coast Total	Thunder Bay	Total
CN	206	539	745	1	746
CP		416	416	200	616
	206	955	1,161	201	1,362

West Coast Port Unloads - Prior 30 Days



Thunder Bay Port Unloads - Prior 30 Days



Port Terminal Status

Vancouver

Daily Activity for 10/24/2018

	Cars Arrived	Cars Received in Interchange	Cars Delivered in Interchange	Cars Placed for Unloading	Loads on Wheels at Destination As of 10/24/2018
CN	409	222	217	436	726
CP	558	205	224	360	674
SRY		14		2	25

Port Unloads

	10/24	10/23	Week To Date	Last Week
CN	539	387	1,324	3,235
CP	416	385	1,328	3,422
SRY	2	1	8	33

Age Profile of Loaded Cars Waiting Placement for Unloading

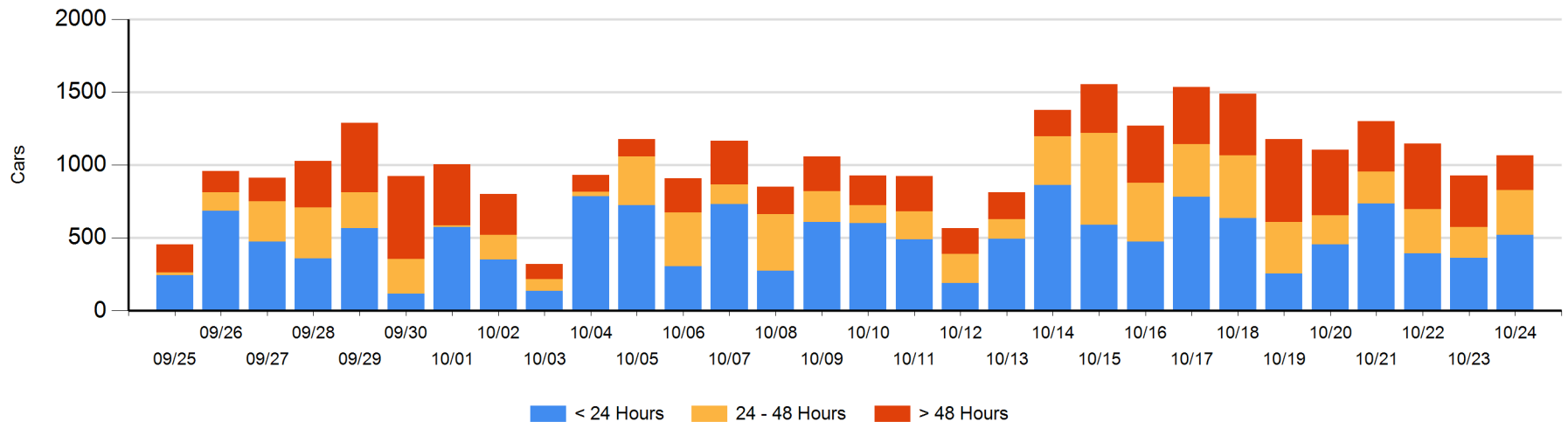
Today

	< 24 Hrs	24 - 48 Hrs	> 48-72 Hrs	> 72 Hrs	Total On Hand
CN	155	111	22	139	427
CP	366	197	18	60	641
SRY					0

Change in Last 24 Hours

	< 24 Hrs	24-48 Hrs	48 - 72 Hrs	> 72 Hrs
CN	-49	81	-133	88
CP	208	16	18	-89
SRY				

Loaded Cars on Hand Vancouver Waiting for Placement - Last 30 Days All Railways



Port Terminal Status

Prince Rupert

Daily Activity for 10/24/2018

	Cars Arrived	Cars Received in Interchange	Cars Delivered in Interchange	Cars Placed for Unloading	Loads on Wheels at Destination As of 10/24/2018
CN		315		315	241

Port Unloads

	10/24	10/23	Week To Date	Last Week
CN	206	163	435	1,360

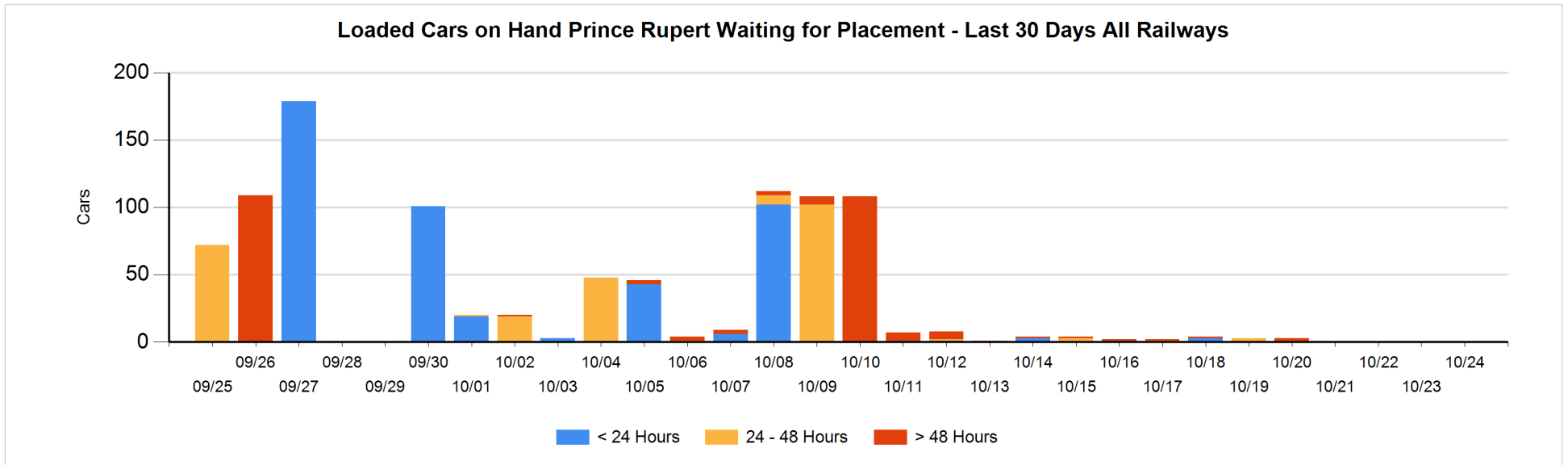
Age Profile of Loaded Cars Waiting Placement for Unloading

Today

	< 24 Hrs	24 - 48 Hrs	> 48-72 Hrs	> 72 Hrs	Total On Hand
CN					0

Change in Last 24 Hours

	< 24 Hrs	24-48 Hrs	48 - 72 Hrs	> 72 Hrs
CN				



Port Terminal Status

Thunder Bay

Daily Activity for 10/24/2018

	Cars Arrived	Cars Received in Interchange	Cars Delivered in Interchange	Cars Placed for Unloading	Loads on Wheels at Destination As of 10/24/2018
CN				5	7
CP	129			122	203

Port Unloads

	10/24	10/23	Week To Date	Last Week
CN	1	62	194	512
CP	200	207	679	1,350

Age Profile of Loaded Cars Waiting Placement for Unloading

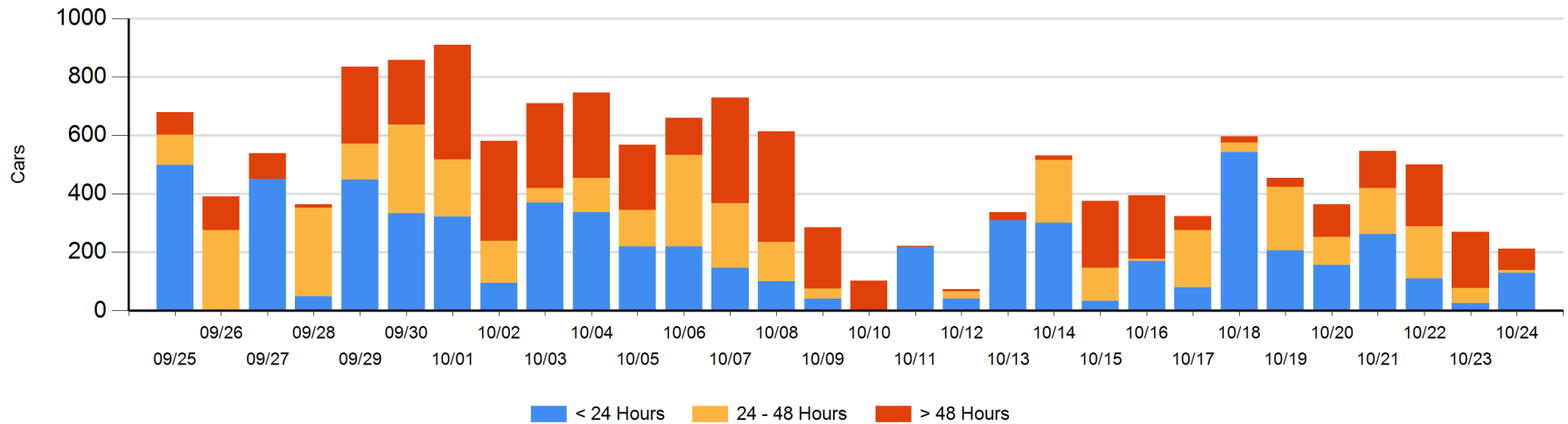
Today

	< 24 Hrs	24 - 48 Hrs	> 48-72 Hrs	> 72 Hrs	Total On Hand
CN				1	1
CP	129	11		71	211

Change in Last 24 Hours

	< 24 Hrs	24-48 Hrs	48 - 72 Hrs	> 72 Hrs
CN		-1		-4
CP	103	-39	-47	-69

Loaded Cars on Hand Thunder Bay Waiting for Placement - Last 30 Days All Railways



Measurement Definitions

Loads on Wheels	<p>Count of loaded rail cars including all rail cars that have been released loaded at origin and have not been reported by the railway as unloaded at destination.</p> <p>Counts include all rail cars (hopper cars and boxcars) moving within a pipeline.</p>
Loads Not Moving	<p>Loaded rail cars for which the railways have not reported a movement event for 48 hours or more whether the rail car is at origin, enroute or at destination.</p>
Port Unloads	<p>Count of rail cars reported by railways as unloaded at the western port destinations of Vancouver, Prince Rupert and Thunder Bay.</p> <p>Unload counts include all rail cars (hopper cars and boxcars) unloaded by all receivers including major port terminals, transloaders and other receivers.</p>
Cars Arrived	<p>Count of rail cars reported as arrived at the destination railway terminal.</p>
Cars Received in Interchange	<p>Count of rail cars received in interchange by each railway within a destination railway terminal. Interchange activity is tracked for the Vancouver and Thunder Bay pipelines as applicable.</p>
Cars Delivered in Interchange	<p>Count of rail cars delivered in interchange by each railway within a destination railway terminal. Interchange activity is tracked for the Vancouver and Thunder Bay pipelines as applicable.</p>
Cars Placed for Unloading	<p>Count of rail cars reported by the railways as placed loaded at the receiver's facility for unloading.</p>
Loads on Wheels at Destination	<p>Count of rail cars that remain under load within the destination railway terminal including rail cars that have been reported as placed for unloading but not yet reported as unloaded.</p>
Waiting Placement for Unloading	<p>Count of rail cars that have been reported as arrived at the destination railway terminal but not reported as placed for unloading by the railway.</p> <p>For the Ports of Vancouver, Prince Rupert and Thunder Bay the count of rail cars waiting placement for unloading is categorized by age – i.e. the elapsed time from arrival at destination to the current report date.</p>