

SPEED READ

- Loads on wheels decreased overnight, marking lower CP volumes offset by an increase in CN volumes. On a net basis, volumes declined due to reduced volumes across all corridors other than E. Canada.
- Network fluidity deteriorated overnight, led by a rise in idle car counts on CP by 2% (+35) offset by a decline in idle car counts on CN by 2% (-25). The total count of cars for 4+ days on both railways decreased 9% (-106) overnight - currently at 1,015 cars.
- Two days in Week 14 unloads now behind prior week's performance by more than 200 unloads, reflecting lower unloads at Vancouver and Thunder Bay offset by improved week over week performance at Prince Rupert.

Loads on Wheels

- Loads on wheels decreased 3% (-366) overnight, due to reduced volumes on CP offset by higher volumes on CN - combined total at 11,883 and 6% above the trailing 30-day average.
- On a net basis, the decline in loads on wheels indicates reduced volumes across all corridors other than E. Canada.
- CN volumes gained 6% (+314) overnight, with higher volumes in the Vancouver, E. Canada and Thunder Bay corridors offset by reduced volumes in the USA/MEX and Prince Rupert corridors. System wide CN loads on wheels now at 5,892 and 7% above the trailing 30-day average.
- CP volumes declined significantly by 11% (-685) overnight, driven by a decline in volumes across all corridors other than USA/MEX. CP system wide loads on wheels now at 5,771 and 6% above the trailing 30-day average.
- Vancouver currently at 6,812, declined for the third consecutive day, down 4% (-297) overnight, now 2% above the trailing 30-day average.
- The Prince Rupert pipeline presently at 1,603, remained largely unchanged (-6) overnight, and 9% above the trailing 30-day average.
- Thunder Bay volumes declined 6% (-115) overnight - currently at 1,906 and 13% above the trailing 30-day average, with 72% of traffic moving on CP.

Hopper Car Rationing

- No hopper car rationing was reported for either CN or CP in week 12.

Loads Not Moving

- **The count of cars not moving for 48+ hours increased slightly (+10) overnight and have now increased for the fifth consecutive day, reflecting higher counts on CP offset by lower counts on CN. Idle car counts now at 2,963 and 36% above the trailing 30-day average.**
- CN
 - **The count of idle cars for 48+ hours declined 2% (-25) overnight - currently at 1,228 cars.**
 - The number of cars idle for 4+ days declined 25% (-159) overnight - now at 477 cars.
 - The count of cars not moving for 7+ days fell 21% (-17) overnight - currently at 64 cars.
 - Vancouver represents 58% of all idle cars.
 - In total 36% of all idle cars are dwelling at origin locations.
- CP
 - **CP idle car counts for 48+ hours gained 2% (+35) overnight and have now increased for three consecutive days - currently at 1,735 cars.**
 - The number of cars idle for 4+ days increased 11% (+53) overnight - currently at 538 cars.
 - The number of cars idle for 7+ days surged by 62% (+60) overnight - now at 157 cars.
 - Vancouver accounts for 46% of all idle cars.

- In total 59% of all idle cars are dwelling at origin locations.

Port Performance

- CN and CP reported a total of 966 cars unloaded at the three major ports, now 22% below the trailing 30 day-average. Two days in Week 14 unloads now behind last week's pace by more than 200 unloads, reflecting reduced unloads at Vancouver and Thunder Bay offset by higher unloads at Prince Rupert.
- Vancouver
 - 572 unloads reported by CN and CP at the Port of Vancouver; CN - 199 and CP - 373. Two days in Week 14 unloads are tracking behind last week's performance by more than 200 unloads.
 - There are 1,650 cars on site at Vancouver with 700 cars arriving at the port in the last 24 hours.
 - CN and CP have more than 1,550 cars in British Columbia en route to Vancouver, with more than 500 cars at Kamloops and west, and 51% of traffic moving on CP.
- Prince Rupert
 - Prince Rupert reported 67 unloads, now ahead of last week's unloads after two days by more than 50 unloads.
 - Loads on wheels now above 1,000 cars - now at 1,603 cars.
 - There are fewer than 450 cars west of Jasper en route to Prince Rupert.
 - There are more than 200 cars on site at Prince Rupert with fewer than 150 cars arriving at the port in the last 24 hours. Given the structure of the pipeline, there appears to be sufficient cars available to support unloads in the next few days.
- Thunder Bay
 - 327 unloads were reported at Thunder Bay yesterday. Two days in Week 14 unloads are tracking behind last week's pace by more than 50 unloads.
 - There are more than 800 cars on site at Thunder Bay with more than 250 cars arriving at the port in the prior 24 hours.
 - There are fewer than 350 cars en route to Thunder Bay from Winnipeg and east. Cars on hand and those en route should support unloads in the next few days.

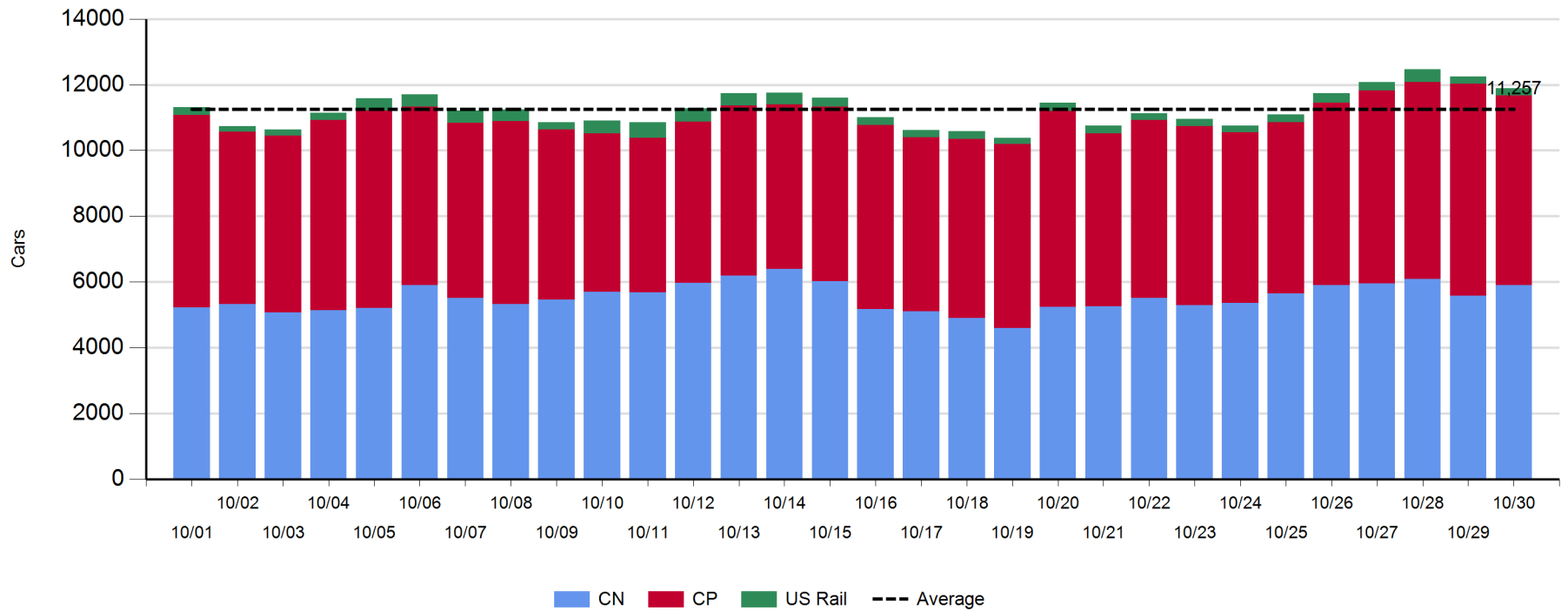
Daily Loads on Wheels - 10/30/2018

	E Canada	Prince Rupert	Thunder Bay	USA/MEX	Vancouver	Total
CN	411	1,603	528	221	3,129	5,892
CP	159		1,378	575	3,659	5,771
Short Line	9				24	33
US Rail				187		187
	579	1,603	1,906	983	6,812	11,883

Change in Loads on Wheels - Prior 24 Hours

	E Canada	Prince Rupert	Thunder Bay	USA/MEX	Vancouver	Total
CN	129	-6	52	-7	146	314
CP	-77		-167	2	-443	-685
Short Line	7				0	7
US Rail				-2		-2
	59	-6	-115	-7	-297	-366

Loads on Wheels - Prior 30 Days

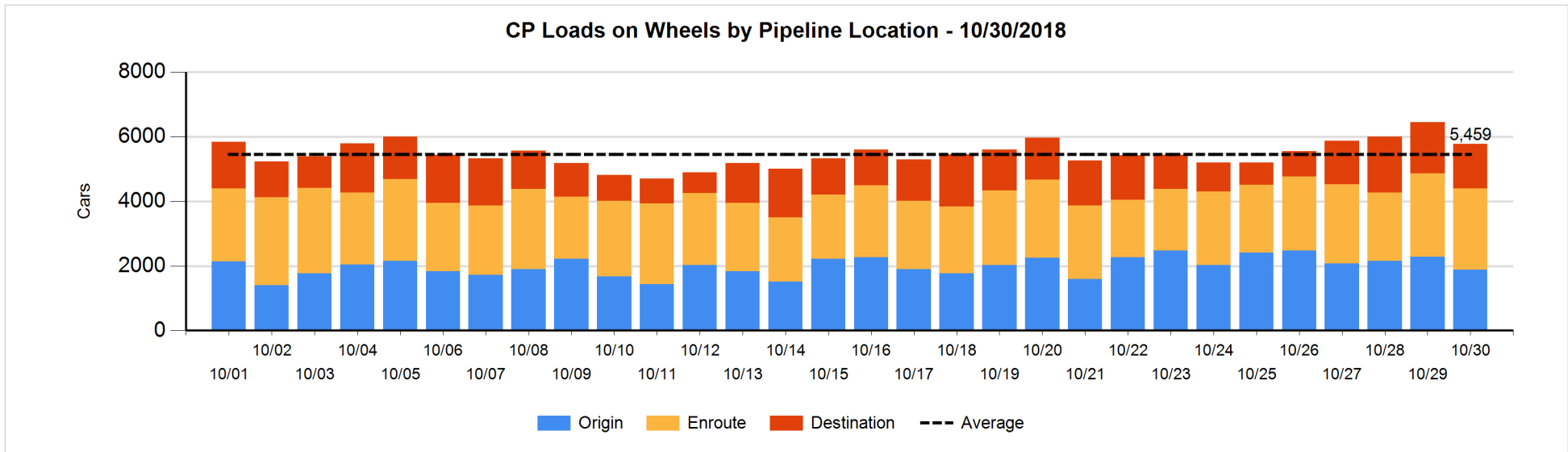
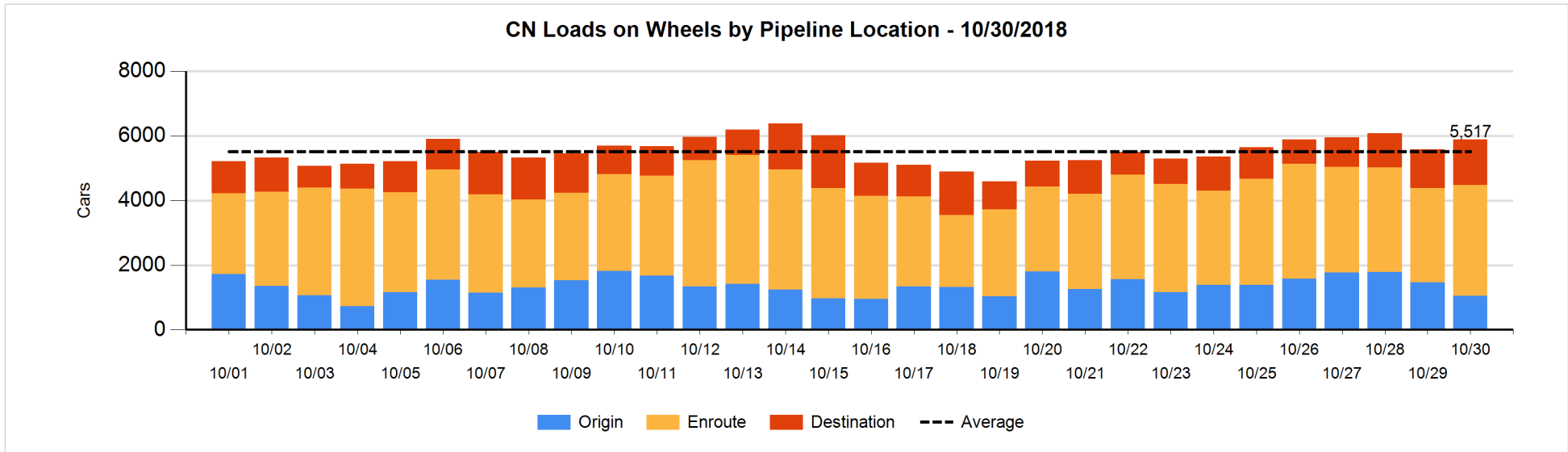


Daily Loads on Wheels By Pipeline Location - 10/30/2018

	E Canada	Prince Rupert	Thunder Bay	USA/MEX	Vancouver	Total
CN						
Origin	127	366	103	20	437	1,053
Enroute	199	1,020	249	169	1,793	3,430
Destination	85	217	176	32	899	1,409
	411	1,603	528	221	3,129	5,892
CP						
Origin	86		224	386	1,183	1,879
Enroute	73		517	189	1,742	2,521
Destination			637		734	1,371
	159		1,378	575	3,659	5,771
US Rail / Short Line						
Origin						
Enroute	3			107		110
Destination	6			80	24	110
	9			187	24	220

Change in Daily Loads on Wheels By Pipeline Location - Prior 24 Hours

	E Canada	Prince Rupert	Thunder Bay	USA/MEX	Vancouver	Total
CN						
Origin	75	-203	2	-32	-251	-409
Enroute	101	133	86	39	151	510
Destination	-47	64	-36	-14	246	213
	129	-6	52	-7	146	314
CP						
Origin	2		-15	-21	-372	-406
Enroute	3		-138	23	52	-60
Destination	-82		-14		-123	-219
	-77		-167	2	-443	-685
US Rail / Short Line						
Origin						
Enroute	1			3		4
Destination	6			-5	0	1
	7			-2	0	5

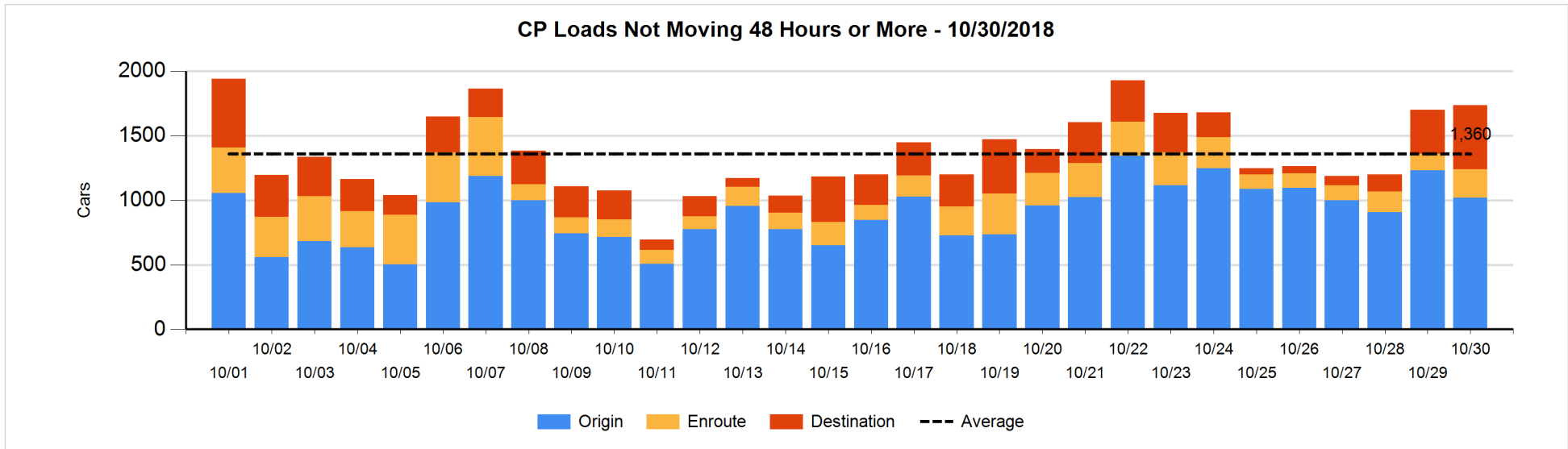
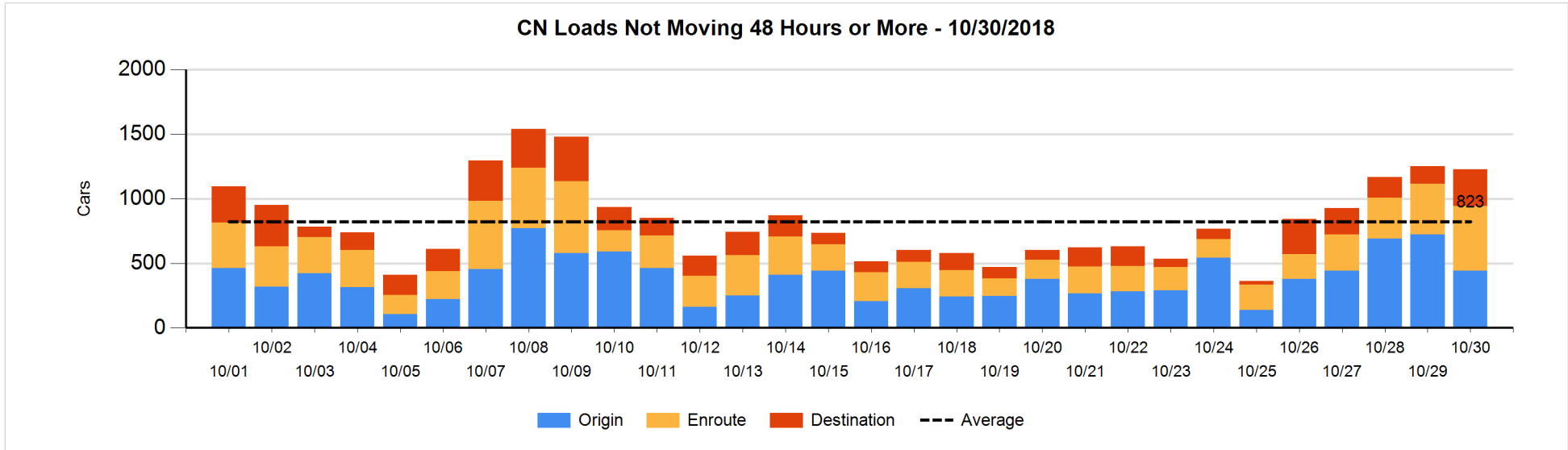


Loads Not Moving 48 Hours or More - 10/30/2018

	E Canada	Prince Rupert	Thunder Bay	USA/MEX	Vancouver	Total
CN						
Origin		230			213	443
Enroute	18	79	1	44	360	502
Destination	35	96	1	14	137	283
	53	405	2	58	710	1228
CP						
Origin	52		103	359	505	1019
Enroute	8		2	115	95	220
Destination			303		193	496
	60		408	474	793	1735
US Rail / Short Line						
Origin						
Enroute				21		21
Destination				30	6	36
				51	6	57

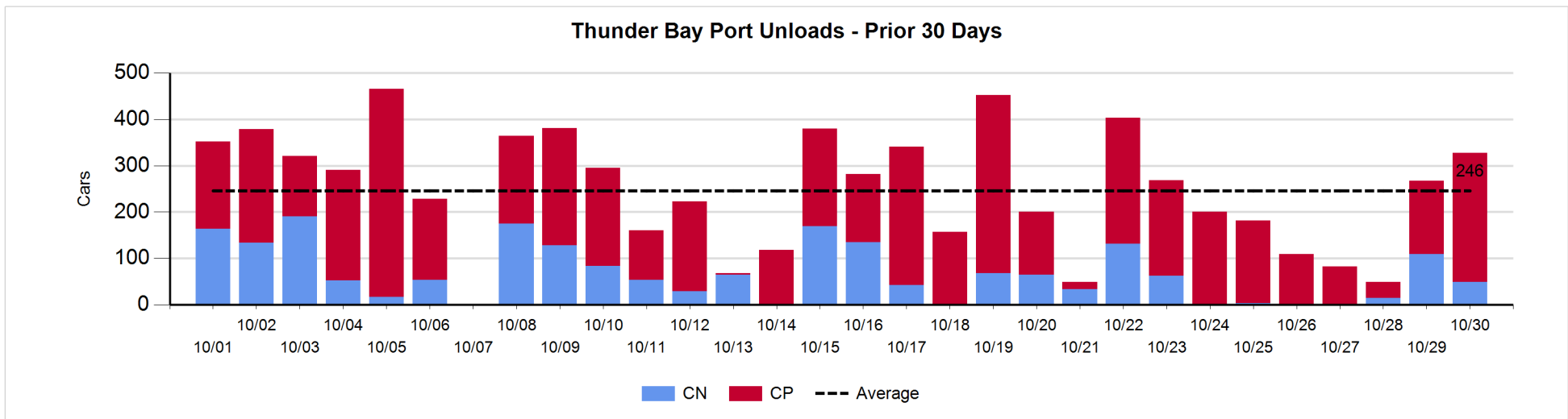
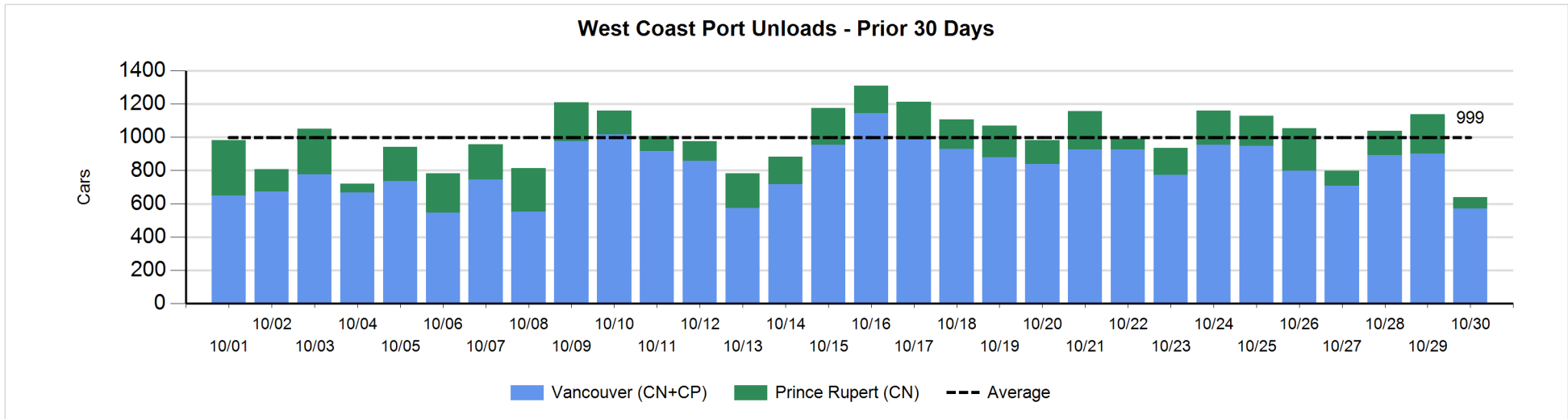
Change in Loads Not Moving 48 Hours or More - 10/30/2018

	E Canada	Prince Rupert	Thunder Bay	USA/MEX	Vancouver	Total
CN						
Origin		-64		-22	-194	-280
Enroute	16	-117	-1	0	210	108
Destination	19	0	0	2	126	147
	35	-181	-1	-20	142	-25
CP						
Origin	-4		35	-46	-196	-211
Enroute	4		-20	84	23	91
Destination			176		-21	155
	0		191	38	-194	35
US Rail / Short Line						
Origin						
Enroute				-2		-2
Destination				-1	4	3
				-3	4	1



Port Unloads - 10/30/2018

	Prince Rupert	Vancouver	West Coast Total	Thunder Bay	Total
CN	67	199	266	49	315
CP		373	373	278	651
	67	572	639	327	966



Port Terminal Status

Vancouver

Daily Activity for 10/30/2018

	Cars Arrived	Cars Received in Interchange	Cars Delivered in Interchange	Cars Placed for Unloading	Loads on Wheels at Destination As of 10/30/2018
CN	252	148	154	281	899
CP	443	152	148	361	734
SRY		2			24

Port Unloads

	10/30	10/29	Week To Date	Last Week
CN	199	405	604	2,848
CP	373	496	869	3,150
SRY		5	5	25

Age Profile of Loaded Cars Waiting Placement for Unloading

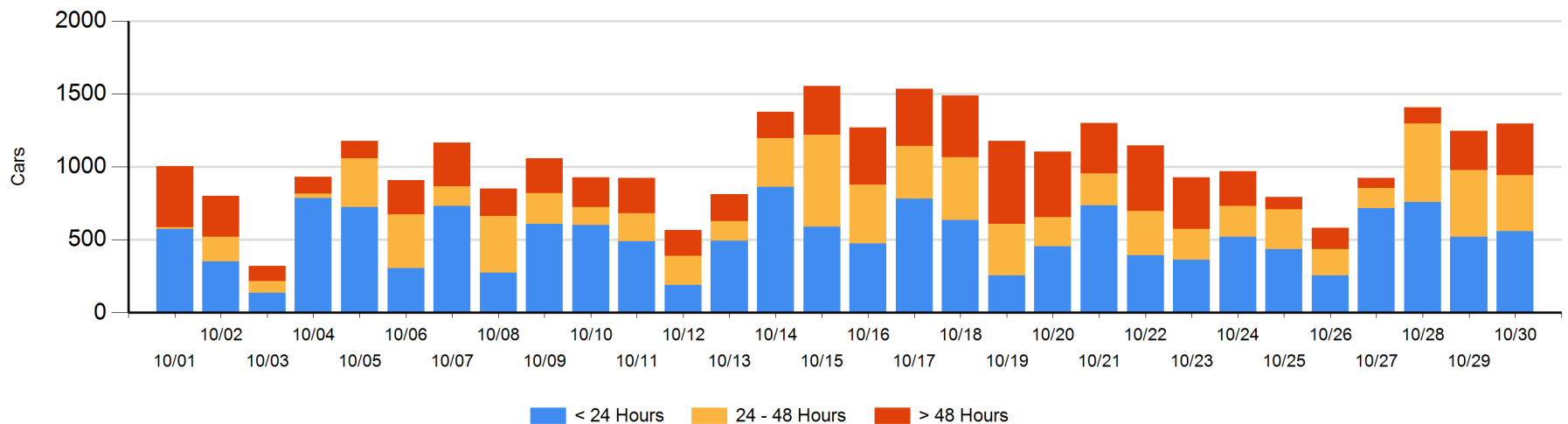
Today

	< 24 Hrs	24 - 48 Hrs	> 48-72 Hrs	> 72 Hrs	Total On Hand
CN	229	209	143	77	658
CP	331	173	111	22	637
SRY					0

Change in Last 24 Hours

	< 24 Hrs	24-48 Hrs	48 - 72 Hrs	> 72 Hrs
CN	-116	-43	-53	58
CP	154	-32	104	-24
SRY				

Loaded Cars on Hand Vancouver Waiting for Placement - Last 30 Days All Railways



Port Terminal Status

Prince Rupert

Daily Activity for 10/30/2018

	Cars Arrived	Cars Received in Interchange	Cars Delivered in Interchange	Cars Placed for Unloading	Loads on Wheels at Destination As of 10/30/2018
CN	131			131	217

Port Unloads

	10/30	10/29	Week To Date	Last Week
CN	67	236	303	1,110

Age Profile of Loaded Cars Waiting Placement for Unloading

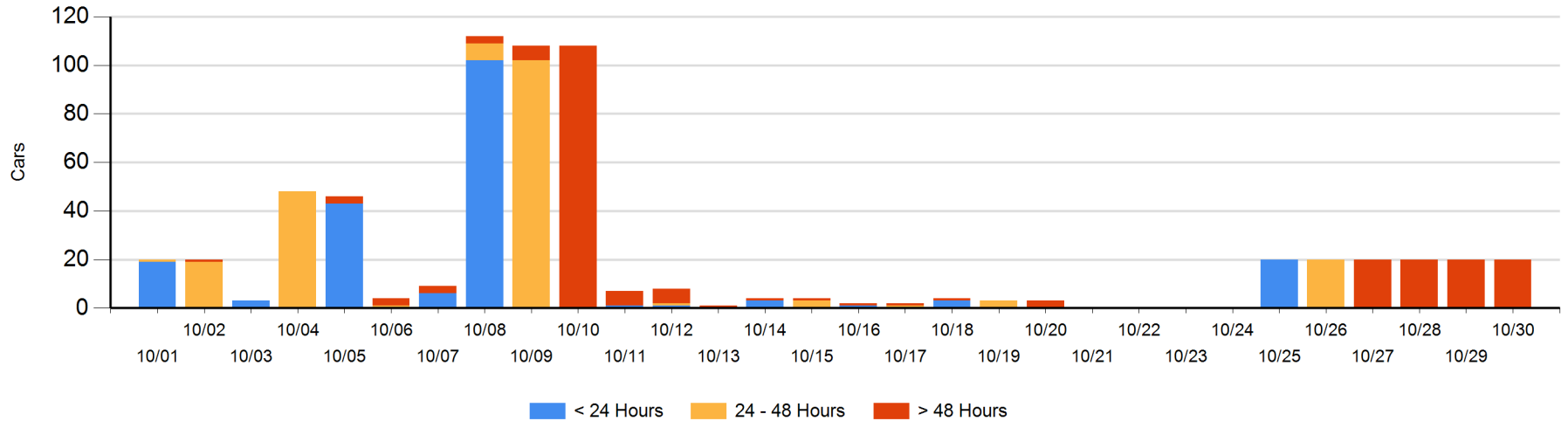
Today

	< 24 Hrs	24 - 48 Hrs	> 48-72 Hrs	> 72 Hrs	Total On Hand
CN				20	20

Change in Last 24 Hours

	< 24 Hrs	24-48 Hrs	48 - 72 Hrs	> 72 Hrs
CN				0

Loaded Cars on Hand Prince Rupert Waiting for Placement - Last 30 Days All Railways



Port Terminal Status

Thunder Bay

Daily Activity for 10/30/2018

	Cars Arrived	Cars Received in Interchange	Cars Delivered in Interchange	Cars Placed for Unloading	Loads on Wheels at Destination As of 10/30/2018
CN	13			41	176
CP	264			231	637

Port Unloads

	10/30	10/29	Week To Date	Last Week
CN	49	109	158	213
CP	278	158	436	1,083

Age Profile of Loaded Cars Waiting Placement for Unloading

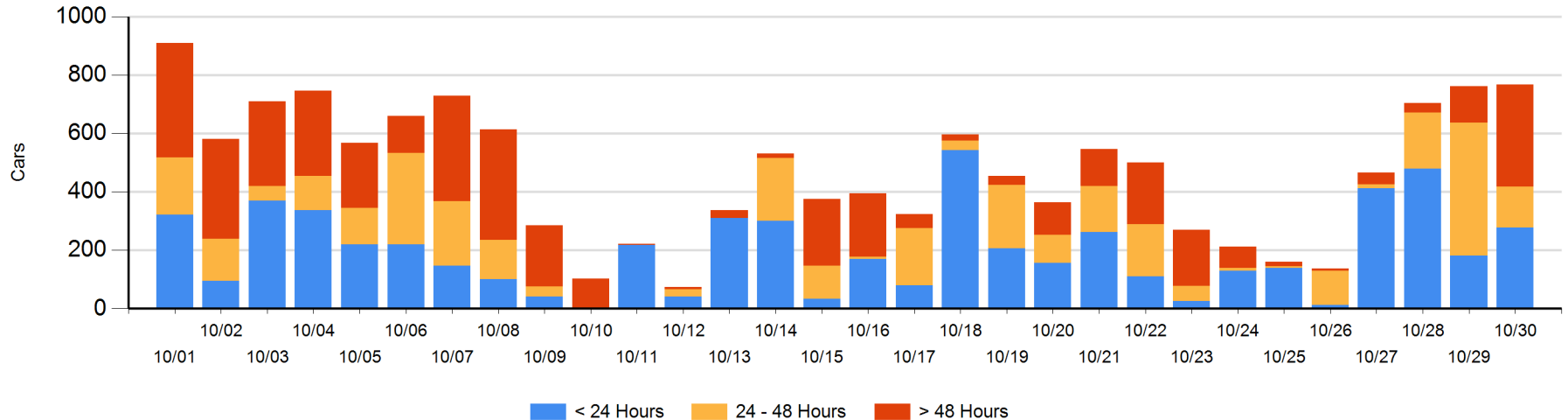
Today

	< 24 Hrs	24 - 48 Hrs	> 48-72 Hrs	> 72 Hrs	Total On Hand
CN	13	114			127
CP	264	26	307	43	640

Change in Last 24 Hours

	< 24 Hrs	24-48 Hrs	48 - 72 Hrs	> 72 Hrs
CN	-142	114		
CP	238	-429	186	38

Loaded Cars on Hand Thunder Bay Waiting for Placement - Last 30 Days All Railways



Measurement Definitions

Loads on Wheels	<p>Count of loaded rail cars including all rail cars that have been released loaded at origin and have not been reported by the railway as unloaded at destination.</p> <p>Counts include all rail cars (hopper cars and boxcars) moving within a pipeline.</p>
Loads Not Moving	<p>Loaded rail cars for which the railways have not reported a movement event for 48 hours or more whether the rail car is at origin, enroute or at destination.</p>
Port Unloads	<p>Count of rail cars reported by railways as unloaded at the western port destinations of Vancouver, Prince Rupert and Thunder Bay.</p> <p>Unload counts include all rail cars (hopper cars and boxcars) unloaded by all receivers including major port terminals, transloaders and other receivers.</p>
Cars Arrived	<p>Count of rail cars reported as arrived at the destination railway terminal.</p>
Cars Received in Interchange	<p>Count of rail cars received in interchange by each railway within a destination railway terminal. Interchange activity is tracked for the Vancouver and Thunder Bay pipelines as applicable.</p>
Cars Delivered in Interchange	<p>Count of rail cars delivered in interchange by each railway within a destination railway terminal. Interchange activity is tracked for the Vancouver and Thunder Bay pipelines as applicable.</p>
Cars Placed for Unloading	<p>Count of rail cars reported by the railways as placed loaded at the receiver's facility for unloading.</p>
Loads on Wheels at Destination	<p>Count of rail cars that remain under load within the destination railway terminal including rail cars that have been reported as placed for unloading but not yet reported as unloaded.</p>
Waiting Placement for Unloading	<p>Count of rail cars that have been reported as arrived at the destination railway terminal but not reported as placed for unloading by the railway.</p> <p>For the Ports of Vancouver, Prince Rupert and Thunder Bay the count of rail cars waiting placement for unloading is categorized by age – i.e. the elapsed time from arrival at destination to the current report date.</p>