

SPEED READ

- Loads on wheels increased slightly overnight, reflecting a rise in CN volumes offset by lower CP volumes. On a net basis, volumes rose due to increased traffic levels in the Prince Rupert and Vancouver corridors offset by lower traffic in the USA/MEX, E. Canada and Thunder Bay corridors.
- Network fluidity improved overnight, led by a decline in idle car counts on both CN and CP by 16% (-113) and 39% (-393), respectively. The total count of cars for 4+ days on both railways decreased 13% (-96) overnight - currently at 626 cars.
- Four days in Week 7 unloads now ahead of prior week's performance by 750 unloads, reflecting an improvement in week over week performance at Thunder Bay and Vancouver offset by reduced unloads at Prince Rupert.

Loads on Wheels

- Loads on wheels increased marginally by 1% (+107) overnight, due to higher volumes on CN offset by lower volumes on CP - combined total at 9,353 and 9% above the trailing 30-day average.
- On a net basis, the rise in loads on wheels indicates higher volumes in the Prince Rupert and Vancouver corridors offset by lower traffic in the USA/MEX, E. Canada and Thunder Bay corridors.
- CN volumes rose 5% (+210) overnight, with higher traffic in the Prince Rupert and Vancouver corridors offset by reduced volumes in the E. Canada, USA/MEX and Thunder Bay corridors. System wide CN loads on wheels currently at 4,688 and 14% above the trailing 30-day average.
- CP volumes declined slightly by 1% (-54) overnight, driven by a decline in traffic across all corridors other than Thunder Bay. CP system wide loads on wheels now at 4,398 and 6% above the trailing 30-day average.
- Vancouver currently at 4,889, rose slightly by 1% (+64) overnight and have now increased for the third consecutive day, now 8% above the trailing 30-day average.
- The Prince Rupert pipeline currently at 1,325, increased significantly by 13% (+155) overnight and 26% above the trailing 30-day average.
- Thunder Bay volumes remained unchanged (-1) overnight - now at 1,689 and 11% above the trailing 30-day average, with 71% of traffic moving on CP.

Hopper Car Rationing

- CN has rationed about 100 hopper car orders for week 6 and 100 orders for the current grain week (7).

Loads Not Moving

- **The count of cars not moving for 48+ hours decreased 29% (-506) overnight, marking lower counts on both CN and CP. Idle car counts now at 1,236 and 7% below the trailing 30 day-average.**
- CN
 - **The count of idle cars for 48+ hours declined 16% (-113) overnight - now at 612 cars.**
 - The number of cars idle for 4+ days gained 30% (+34) overnight - now at 148 cars.
 - The count of cars not moving for 7+ days decreased 6% (-5) overnight - now at 85 cars.
 - Vancouver represents 43% of all idle cars.
 - In total 44% of all idle cars are dwelling at origin locations.
- CP
 - **CP idle car counts for 48+ hours declined 39% (-393) overnight and have now decreased for three consecutive days - now at 624 cars.**
 - The number of cars idle for 4+ days fell 21% (-130) overnight - presently at 478 cars.

- The number of cars idle for 7+ days decreased 15% (-36) overnight - now at 212 cars.
- Vancouver accounts for 25% of all idle cars.
- In total 33% of all idle cars are dwelling at origin locations.

Port Performance

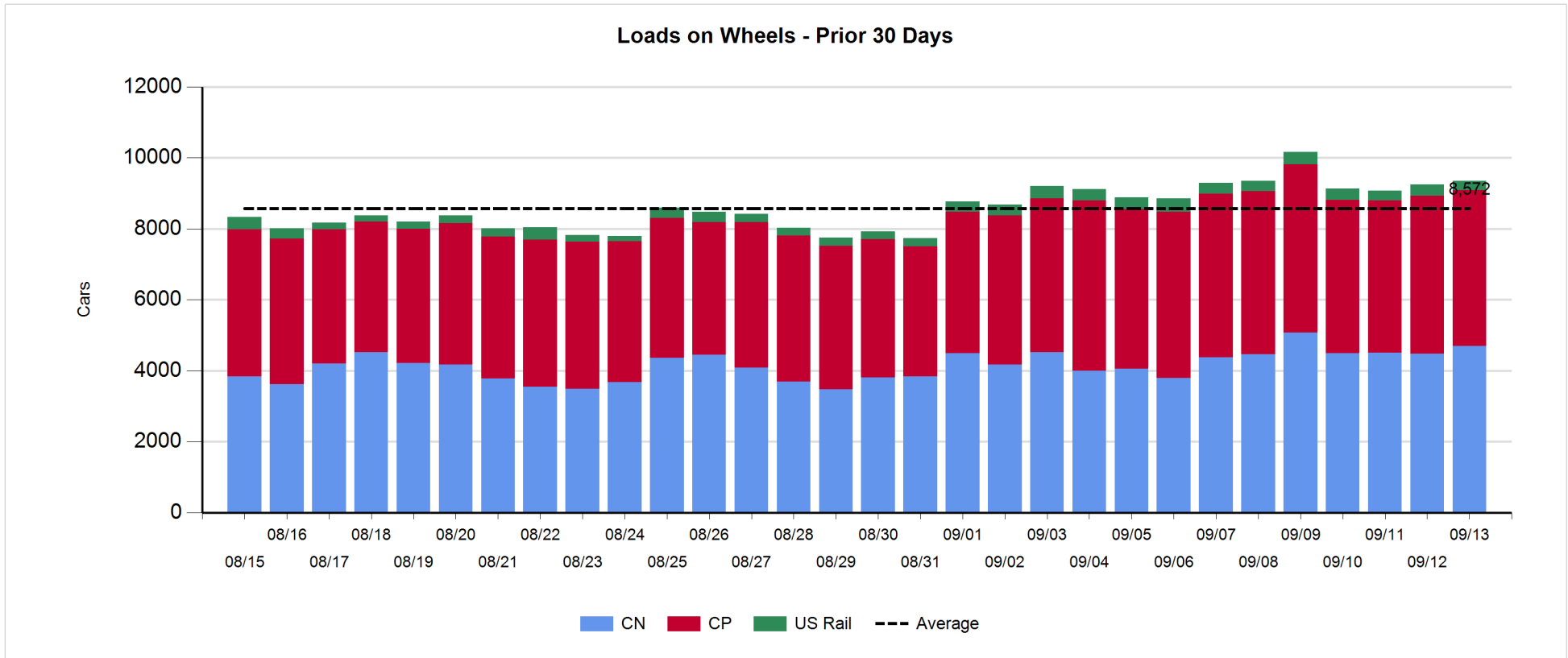
- CN and CP reported a total of 1,144 cars unloaded at the three major ports, now 17% above the trailing 30-day average. Four days in Week 7 unloads are tracking ahead of last week's pace by 750 unloads, reflecting higher unloads at Thunder Bay and Vancouver offset by reduced unloads at Prince Rupert.
- Vancouver
 - 588 unloads reported by CN and CP at the Port of Vancouver; CN - 269 and CP - 319. Four days in Week 7 unloads are tracking ahead of last week's performance by 350 unloads.
 - There are more than 800 cars on site at Vancouver with more than 600 cars arriving at the port in the last 24 hours.
 - CN and CP have 1,300 cars in British Columbia en route to Vancouver, with more than 650 Kamloops and west and 66% of traffic currently moving on CP.
- Prince Rupert
 - Prince Rupert reported 157 unloads, now behind last week's unloads after four days by 100 unloads.
 - Loads on wheels now above 1,000 cars - currently at 1,325 cars.
 - There are 400 cars west of Jasper en route to Prince Rupert.
 - There are 150 cars on site at Prince Rupert with 250 cars arriving at the port in the last 24 hours. Given the structure of the pipeline, there appears to be sufficient cars available to support unloads in the next few days.
- Thunder Bay
 - 399 unloads, the highest seen in the last 30 days, were reported at Thunder Bay yesterday. Four days in Week 7 unloads are tracking ahead of last week's pace by 500 unloads.
 - There are nearly 800 cars on site at Thunder Bay with more than 150 cars arriving at the port in the prior 24 hours.
 - There are more than 150 cars en route to Thunder Bay from Winnipeg and east. Cars on hand and those en route should support unloads for the balance of the week.

Daily Loads on Wheels - 9/13/2018

	E Canada	Prince Rupert	Thunder Bay	USA/MEX	Vancouver	Total
CN	421	1,325	483	289	2,170	4,688
CP	131		1,206	355	2,706	4,398
Short Line	3				13	16
US Rail				251		251
	555	1,325	1,689	895	4,889	9,353

Change in Loads on Wheels - Prior 24 Hours

	E Canada	Prince Rupert	Thunder Bay	USA/MEX	Vancouver	Total
CN	-12	155	-1	-4	72	210
CP	-4		0	-47	-3	-54
Short Line	-4				-5	-9
US Rail				-40		-40
	-20	155	-1	-91	64	107

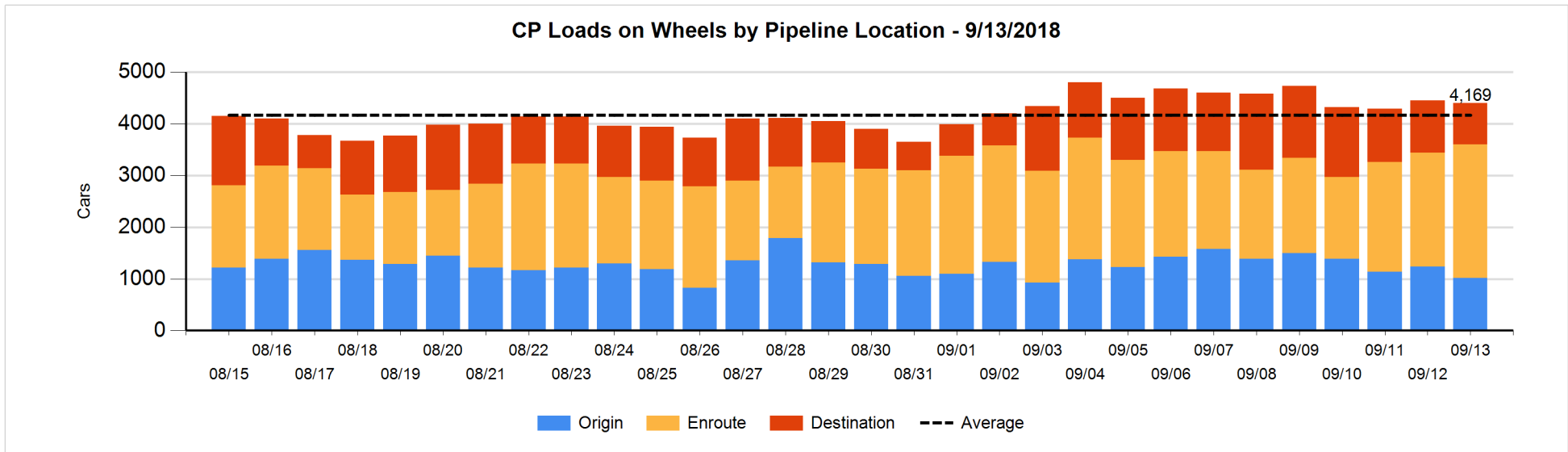
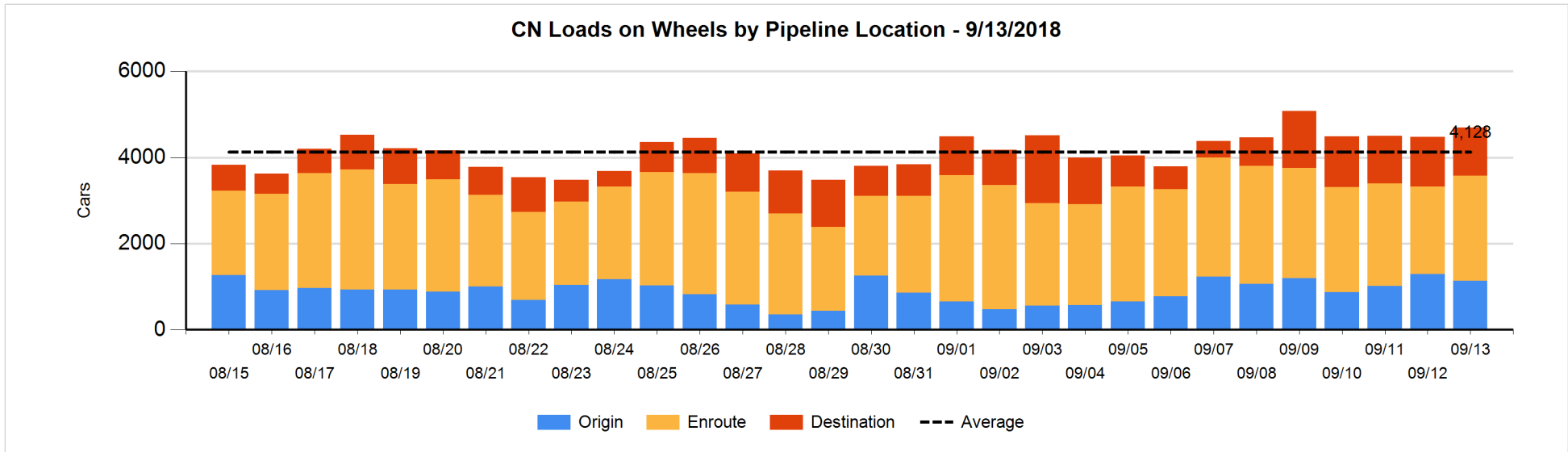


Daily Loads on Wheels By Pipeline Location - 9/13/2018

	E Canada	Prince Rupert	Thunder Bay	USA/MEX	Vancouver	Total
CN						
Origin	16	386	199	103	433	1,137
Enroute	310	782	22	167	1,158	2,439
Destination	95	157	262	19	579	1,112
	421	1,325	483	289	2,170	4,688
CP						
Origin	43		217	35	721	1,016
Enroute	87		466	281	1,749	2,583
Destination	1		523	39	236	799
	131		1,206	355	2,706	4,398
US Rail / Short Line						
Origin						
Enroute				188		188
Destination	3			63	13	79
	3			251	13	267

Change in Daily Loads on Wheels By Pipeline Location - Prior 24 Hours

	E Canada	Prince Rupert	Thunder Bay	USA/MEX	Vancouver	Total
CN						
Origin	0	-193	199	-50	-108	-152
Enroute	3	258	-11	57	97	404
Destination	-15	90	-189	-11	83	-42
	-12	155	-1	-4	72	210
CP						
Origin	-41		-162	4	-20	-219
Enroute	37		209	-35	167	378
Destination	0		-47	-16	-150	-213
	-4		0	-47	-3	-54
US Rail / Short Line						
Origin						
Enroute				-21		-21
Destination	-4			-19	-5	-28
	-4			-40	-5	-49

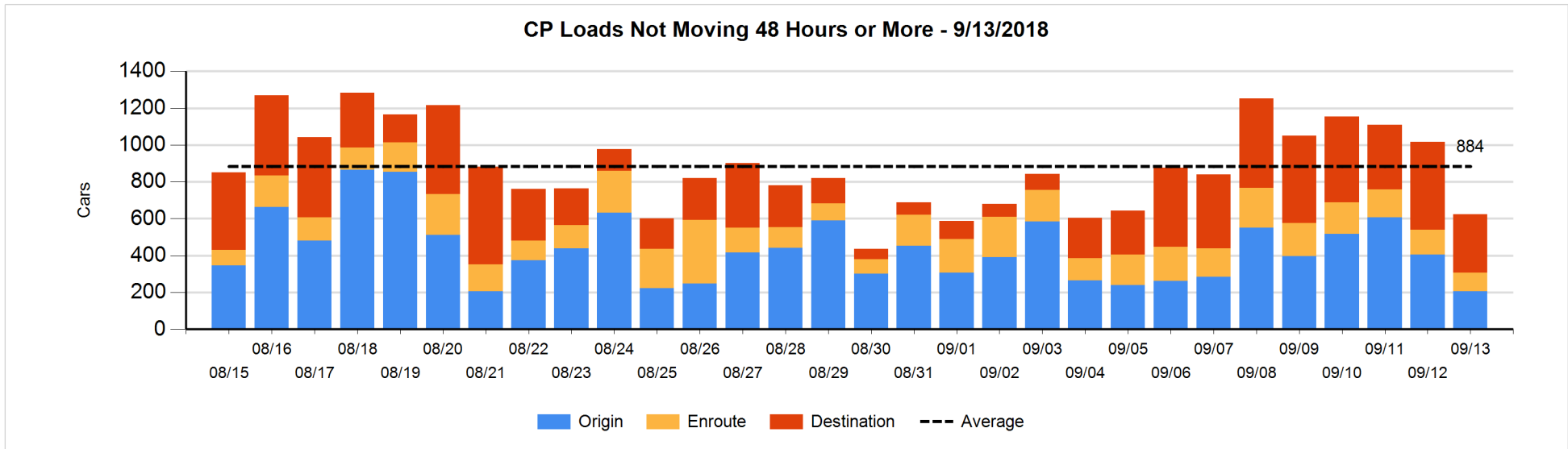
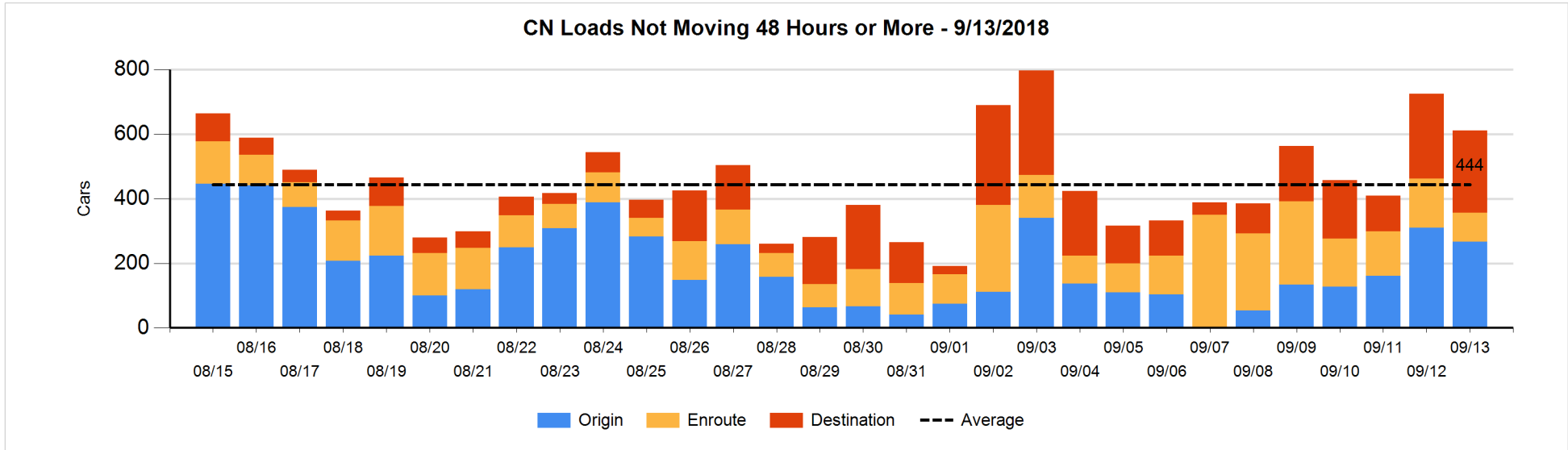


Loads Not Moving 48 Hours or More - 9/13/2018

	E Canada	Prince Rupert	Thunder Bay	USA/MEX	Vancouver	Total
CN						
Origin	16	63		71	117	267
Enroute	18	6	1	53	12	90
Destination	6	2	103	12	132	255
	40	71	104	136	261	612
CP						
Origin	43		24	27	111	205
Enroute	4		5	71	22	102
Destination			261	31	25	317
	47		290	129	158	624
US Rail / Short Line						
Origin						
Enroute				95		95
Destination	3			28	7	38
	3			123	7	133

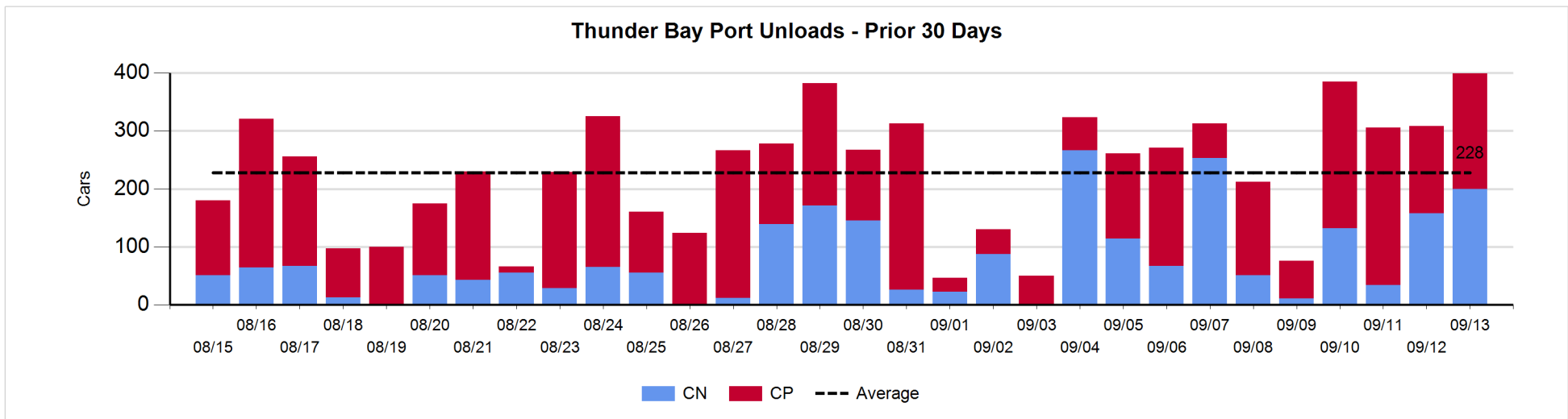
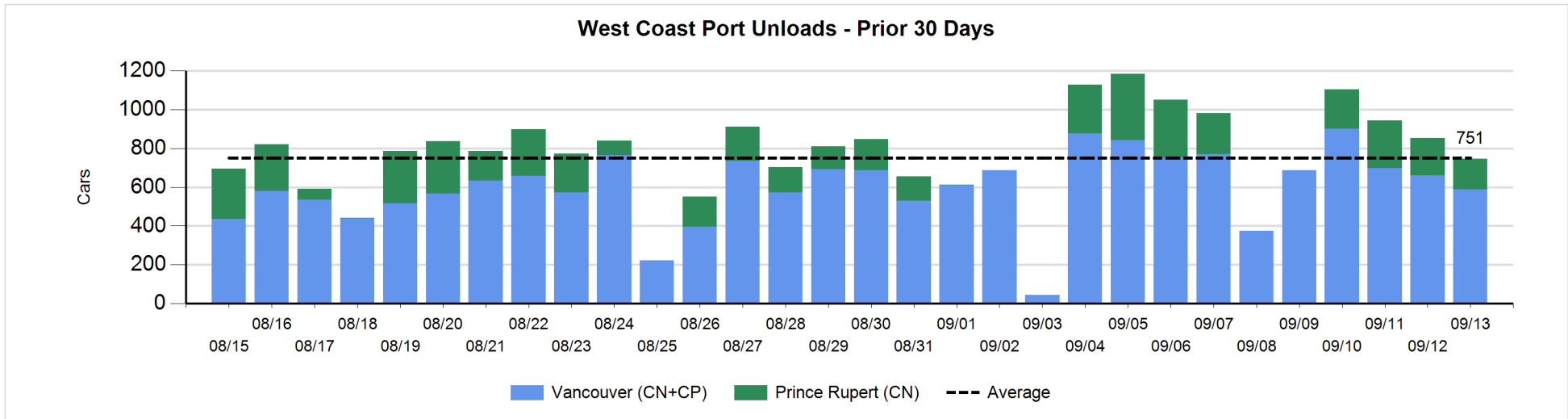
Change in Loads Not Moving 48 Hours or More - 9/13/2018

	E Canada	Prince Rupert	Thunder Bay	USA/MEX	Vancouver	Total
CN						
Origin	16	9		20	-88	-43
Enroute	1	-2	0	0	-62	-63
Destination	2	0	3	2	-14	-7
	19	7	3	22	-164	-113
CP						
Origin	-38		0	-2	-160	-200
Enroute	0		-1	-12	-20	-33
Destination			-107	15	-68	-160
	-38		-108	1	-248	-393
US Rail / Short Line						
Origin						
Enroute				43		43
Destination	3			-8	-2	-7
	3			35	-2	36



Port Unloads - 9/13/2018

	Prince Rupert	Vancouver	West Coast Total	Thunder Bay	Total
CN	157	269	426	200	626
CP		319	319	199	518
	157	588	745	399	1,144



Port Terminal Status

Vancouver

Daily Activity for 9/13/2018

	Cars Arrived	Cars Received in Interchange	Cars Delivered in Interchange	Cars Placed for Unloading	Loads on Wheels at Destination As of 9/13/2018
CN	373	240	166	244	579
CP	245	164	250	333	236
SRY		12		7	13

Port Unloads

	09/13	09/12	Week To Date	Last Week
CN	269	280	1,453	1,893
CP	319	380	1,393	2,452
SRY	7	6	35	48

Age Profile of Loaded Cars Waiting Placement for Unloading

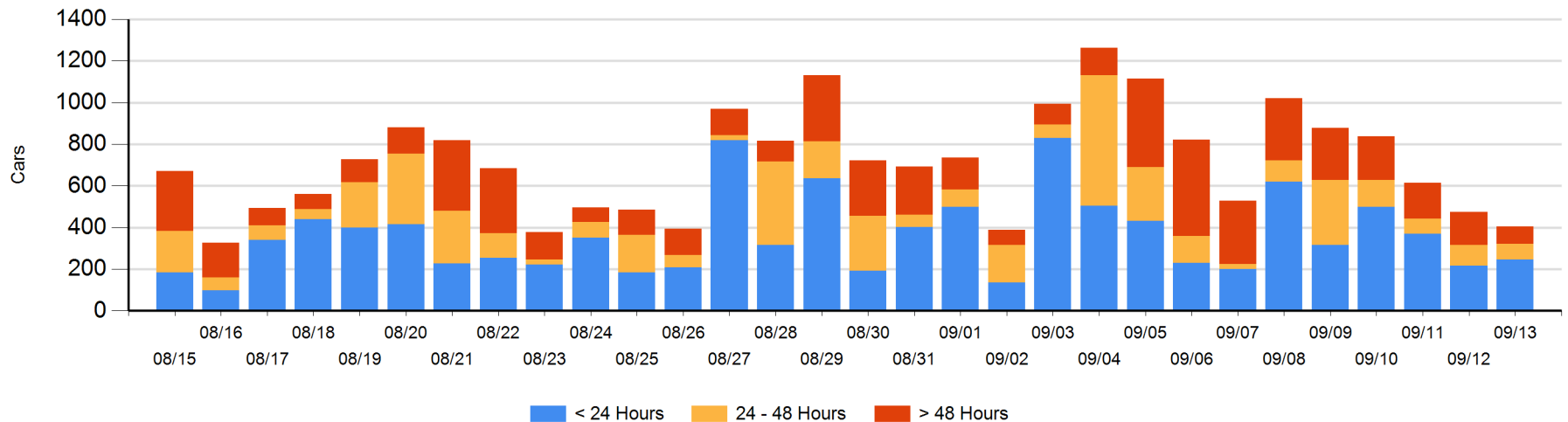
Today

	< 24 Hrs	24 - 48 Hrs	> 48-72 Hrs	> 72 Hrs	Total On Hand
CN	111	68	17	8	204
CP	134	8	35	25	202
SRY					0

Change in Last 24 Hours

	< 24 Hrs	24-48 Hrs	48 - 72 Hrs	> 72 Hrs
CN	23	5	0	-53
CP	5	-28	6	-26
SRY				

Loaded Cars on Hand Vancouver Waiting for Placement - Last 30 Days All Railways



Port Terminal Status

Prince Rupert

Daily Activity for 9/13/2018

	Cars Arrived	Cars Received in Interchange	Cars Delivered in Interchange	Cars Placed for Unloading	Loads on Wheels at Destination As of 9/13/2018
CN	247			247	157

Port Unloads

	09/13	09/12	Week To Date	Last Week
CN	157	193	800	1,103

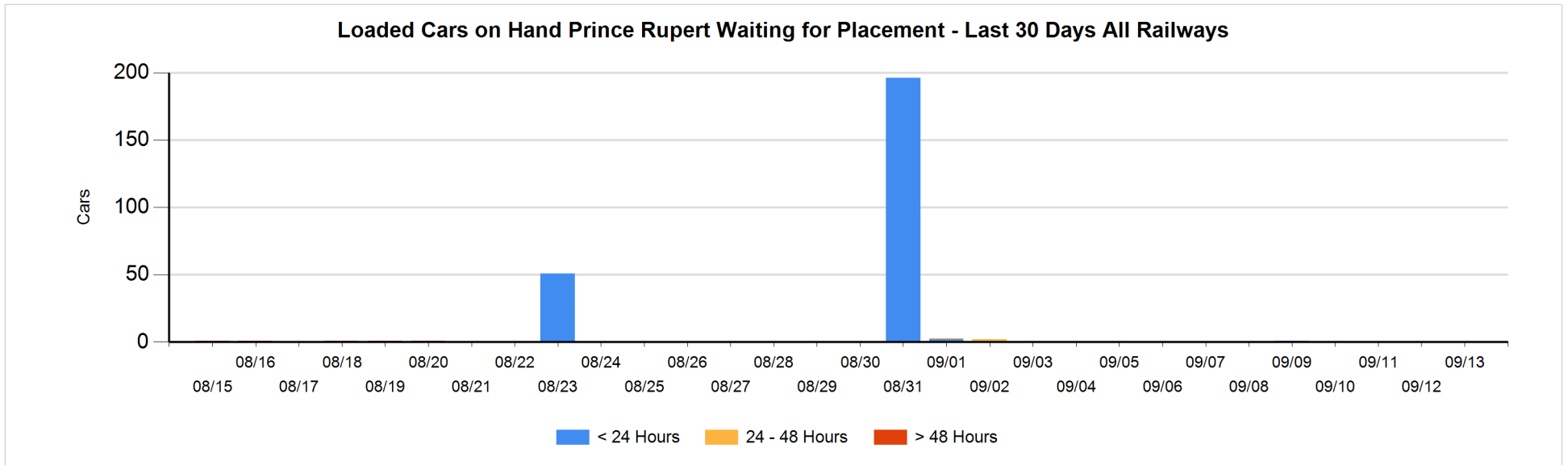
Age Profile of Loaded Cars Waiting Placement for Unloading

Today

	< 24 Hrs	24 - 48 Hrs	> 48-72 Hrs	> 72 Hrs	Total On Hand
CN					0

Change in Last 24 Hours

	< 24 Hrs	24-48 Hrs	48 - 72 Hrs	> 72 Hrs
CN				



Port Terminal Status

Thunder Bay

Daily Activity for 9/13/2018

	Cars Arrived	Cars Received in Interchange	Cars Delivered in Interchange	Cars Placed for Unloading	Loads on Wheels at Destination As of 9/13/2018
CN	11				262
CP	153			215	523

Port Unloads

	09/13	09/12	Week To Date	Last Week
CN	200	158	524	762
CP	199	150	874	744

Age Profile of Loaded Cars Waiting Placement for Unloading

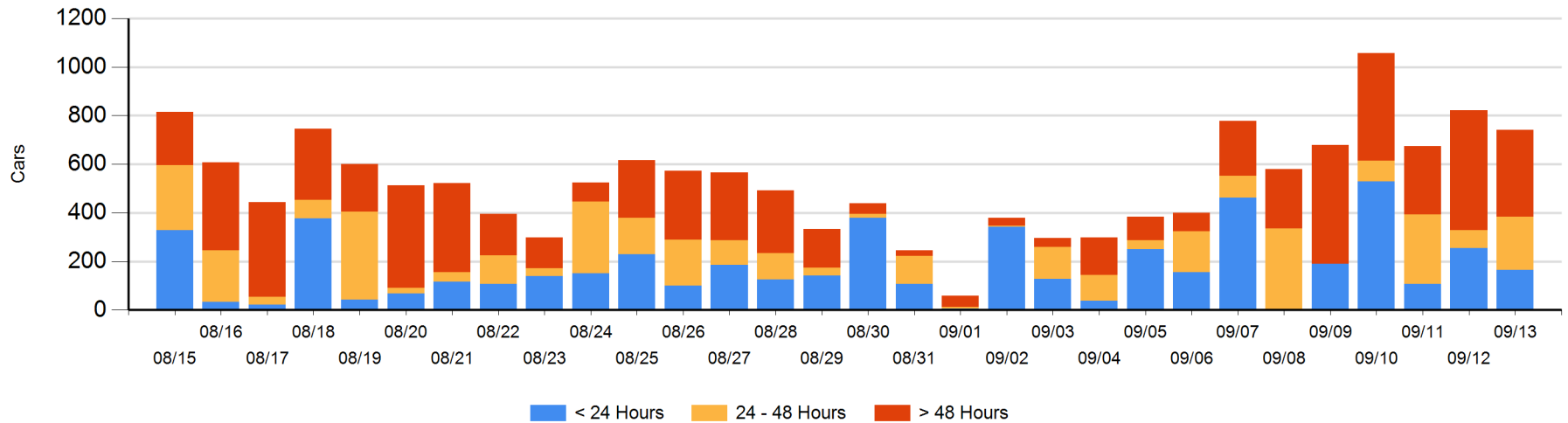
Today

	< 24 Hrs	24 - 48 Hrs	> 48-72 Hrs	> 72 Hrs	Total On Hand
CN	11	141		106	258
CP	153	79	16	236	484

Change in Last 24 Hours

	< 24 Hrs	24-48 Hrs	48 - 72 Hrs	> 72 Hrs
CN	-130	141	-106	106
CP	40	5	-90	-45

Loaded Cars on Hand Thunder Bay Waiting for Placement - Last 30 Days All Railways



Measurement Definitions

Loads on Wheels	<p>Count of loaded rail cars including all rail cars that have been released loaded at origin and have not been reported by the railway as unloaded at destination.</p> <p>Counts include all rail cars (hopper cars and boxcars) moving within a pipeline.</p>
Loads Not Moving	<p>Loaded rail cars for which the railways have not reported a movement event for 48 hours or more whether the rail car is at origin, enroute or at destination.</p>
Port Unloads	<p>Count of rail cars reported by railways as unloaded at the western port destinations of Vancouver, Prince Rupert and Thunder Bay.</p> <p>Unload counts include all rail cars (hopper cars and boxcars) unloaded by all receivers including major port terminals, transloaders and other receivers.</p>
Cars Arrived	<p>Count of rail cars reported as arrived at the destination railway terminal.</p>
Cars Received in Interchange	<p>Count of rail cars received in interchange by each railway within a destination railway terminal. Interchange activity is tracked for the Vancouver and Thunder Bay pipelines as applicable.</p>
Cars Delivered in Interchange	<p>Count of rail cars delivered in interchange by each railway within a destination railway terminal. Interchange activity is tracked for the Vancouver and Thunder Bay pipelines as applicable.</p>
Cars Placed for Unloading	<p>Count of rail cars reported by the railways as placed loaded at the receiver's facility for unloading.</p>
Loads on Wheels at Destination	<p>Count of rail cars that remain under load within the destination railway terminal including rail cars that have been reported as placed for unloading but not yet reported as unloaded.</p>
Waiting Placement for Unloading	<p>Count of rail cars that have been reported as arrived at the destination railway terminal but not reported as placed for unloading by the railway.</p> <p>For the Ports of Vancouver, Prince Rupert and Thunder Bay the count of rail cars waiting placement for unloading is categorized by age – i.e. the elapsed time from arrival at destination to the current report date.</p>