

SPEED READ

- Loads on wheels increased overnight, reflecting a rise in both CN and CP volumes. On a net basis, volumes gained due to higher volumes across all corridors other than Thunder Bay.
- Network fluidity deteriorated overnight, led by an increase in idle car counts on both CN by 27% (+187) and CP by 10% (+91), respectively. The total count of cars for 4+ days on both railways decreased 14% (-91) overnight - presently at 564 cars.
- Four days in Week 8 unloads now behind prior week's performance by 50 unloads, marking reduced unloads at Thunder Bay and Prince Rupert offset by improved week over week performance at Vancouver.

Loads on Wheels

- Loads on wheels increased 4% (+364) overnight, due to higher volumes on both CN and CP - combined total at 9,462 and 7% above the trailing 30-day average.
- On a net basis, the increase in loads on wheels indicates higher volumes across all corridors other than Thunder Bay.
- CN volumes increased 7% (+315) overnight, with higher volumes in the Vancouver, Prince Rupert and E. Canada corridors offset by reduced traffic in the Thunder Bay and USA/MEX corridors. System wide CN loads on wheels presently at 4,722 and 10% above the trailing 30-day average.
- CP volumes remained unchanged 0% (+11) overnight, driven by a rise in traffic in the Vancouver and USA/MEX corridors offset by a decline in volumes in the Thunder Bay and E. Canada corridors. CP system wide loads on wheels now at 4,503 and 5% above the trailing 30-day average.
- Vancouver now at 4,921, increased 6% (+277) overnight, now 6% above the trailing 30-day average.
- The Prince Rupert pipeline presently at 1,572, increased significantly by 11% (+151) overnight and 42% above the trailing 30-day average.
- Thunder Bay volumes declined significantly by 11% (-176) overnight - presently at 1,425 and 10% below the trailing 30-day average, with 76% of traffic moving on CP.

Hopper Car Rationing

- CN has rationed 125 hopper car orders for week 7 and none are currently anticipated for week 8.

Loads Not Moving

- **The count of cars not moving for 48+ hours increased 17% (+278) overnight, marking higher counts on both CN and CP. Idle car counts presently at 1,891, the highest seen in the last 30 days, and 43% above the trailing 30-day average.**
- CN
 - **The count of idle cars for 48+ hours gained 27% (+187) overnight - presently at 884 cars, the highest seen in the last 30 days.**
 - The number of cars idle for 4+ days decreased 16% (-59) overnight - now at 299 cars.
 - The count of cars not moving for 7+ days declined significantly by 55% (-108) overnight - presently at 87 cars.
 - Vancouver represents 46% of all idle cars.
 - In total 43% of all idle cars are dwelling at origin locations.
- CP
 - **CP idle car counts for 48+ hours increased 10% (+91) overnight - now at 1,007 cars.**
 - The number of cars idle for 4+ days declined 11% (-32) overnight - presently at 265 cars.
 - The number of cars idle for 7+ days increased 15% (+20) overnight - presently at 153 cars.

- Vancouver accounts for 73% of all idle cars.
- In total 49% of all idle cars are dwelling at origin locations.

Port Performance

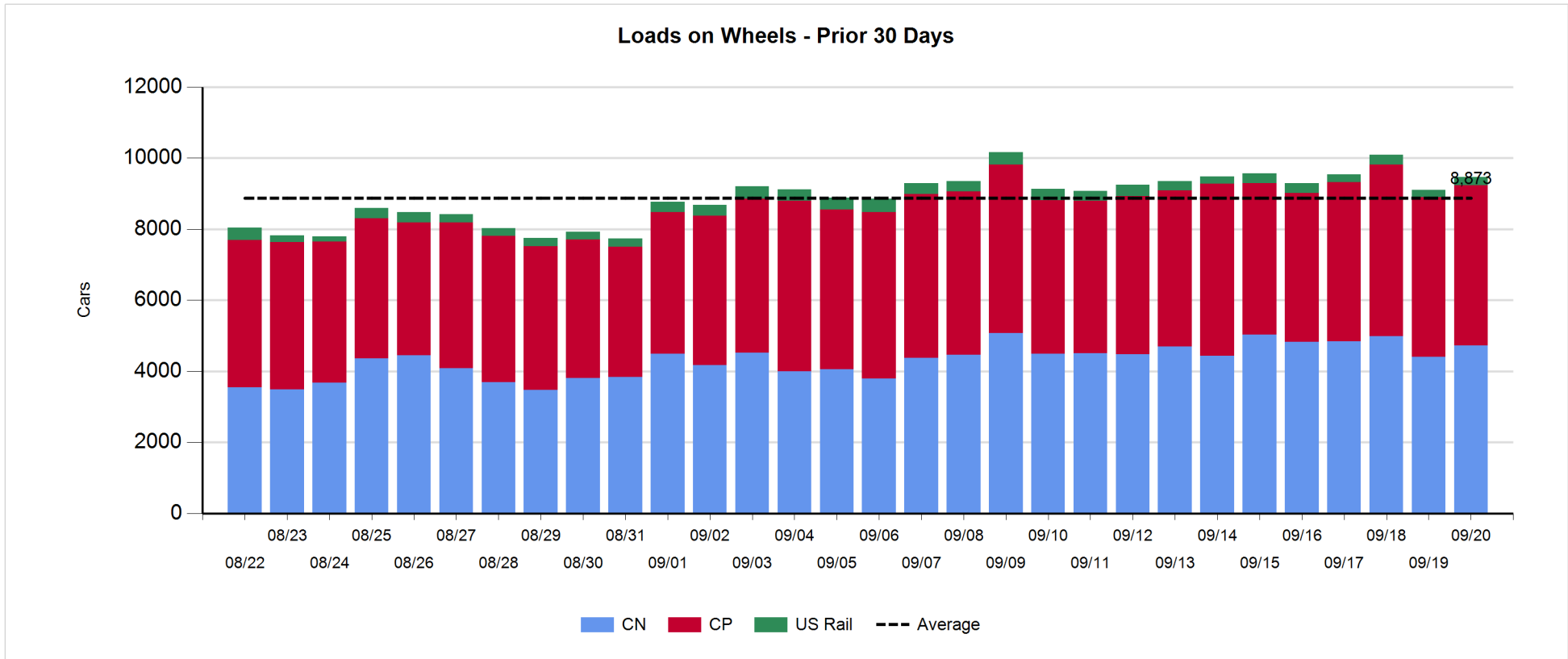
- CN and CP reported a total of 1,223 cars unloaded at the three major ports, now 18% above the trailing 30-day average. Four days in Week 8 unloads are tracking behind last week's pace by 50 unloads, marking reduced unloads at Thunder Bay and Prince Rupert offset by higher unloads at Vancouver.
- Vancouver
 - 686 unloads reported by CN and CP at the Port of Vancouver; CN - 278 and CP - 408. Four days in Week 8 unloads are tracking ahead of last week's performance by 15 unloads.
 - There are 1,100 cars on site at Vancouver with nearly 900 cars arriving at the port in the last 24 hours.
 - CN and CP have less than 900 cars in British Columbia en route to Vancouver, with 400 Kamloops and west and 77% of traffic currently moving on CP.
- Prince Rupert
 - Prince Rupert reported 196 unloads, now behind last week's unloads after four days by 11 unloads.
 - Loads on wheels now above 1,000 cars - now at 1,572 cars.
 - There are 450 cars west of Jasper en route to Prince Rupert.
 - There are 200 cars on site at Prince Rupert with 300 cars arriving at the port in the last 24 hours. Given the structure of the pipeline, there appears to be sufficient cars available to support unloads in the next few days.
- Thunder Bay
 - 341 unloads were reported at Thunder Bay yesterday. Four days in Week 8 unloads are tracking behind last week's pace by 50 unloads.
 - There are more than 650 cars on site at Thunder Bay with more than 400 cars arriving at the port in the prior 24 hours.
 - There are 550 cars en route to Thunder Bay from Winnipeg and east. Cars on hand and those en route should support unloads for the balance of the week.

Daily Loads on Wheels - 9/20/2018

	E Canada	Prince Rupert	Thunder Bay	USA/MEX	Vancouver	Total
CN	432	1,572	337	375	2,006	4,722
CP	76		1,088	445	2,894	4,503
Short Line	38				21	59
US Rail				178		178
	546	1,572	1,425	998	4,921	9,462

Change in Loads on Wheels - Prior 24 Hours

	E Canada	Prince Rupert	Thunder Bay	USA/MEX	Vancouver	Total
CN	39	151	-37	-14	176	315
CP	-5		-139	54	101	11
Short Line	13				0	13
US Rail				25		25
	47	151	-176	65	277	364



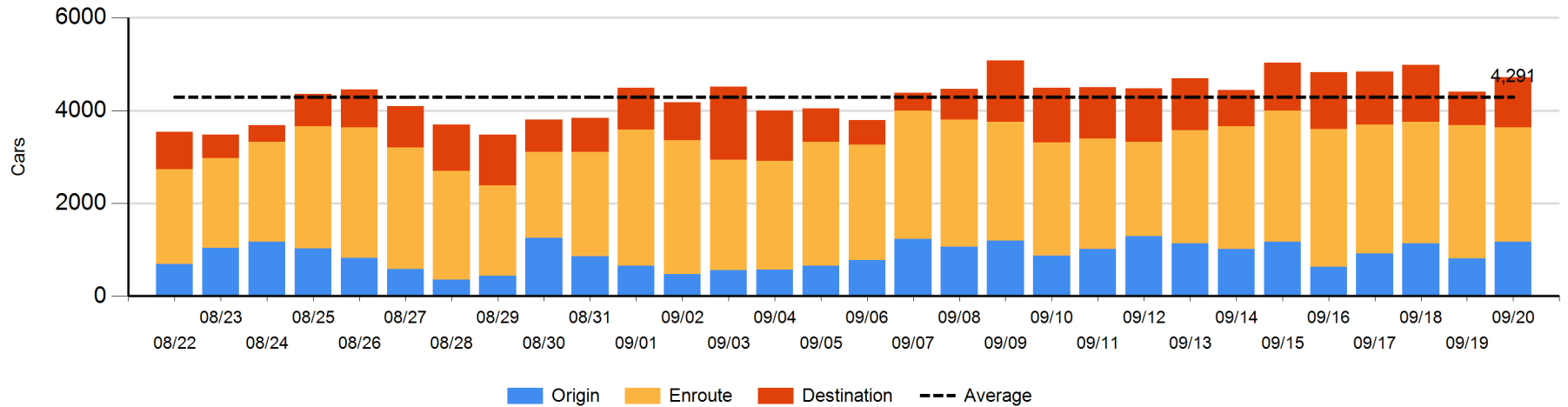
Daily Loads on Wheels By Pipeline Location - 9/20/2018

	E Canada	Prince Rupert	Thunder Bay	USA/MEX	Vancouver	Total
CN						
Origin	103	509		13	547	1,172
Enroute	227	853	84	352	943	2,459
Destination	102	210	253	10	516	1,091
	432	1,572	337	375	2,006	4,722
CP						
Origin	4		161	94	1,096	1,355
Enroute	70		505	338	1,245	2,158
Destination	2		422	13	553	990
	76		1,088	445	2,894	4,503
US Rail / Short Line						
Origin						
Enroute	7			84		91
Destination	31			94	21	146
	38			178	21	237

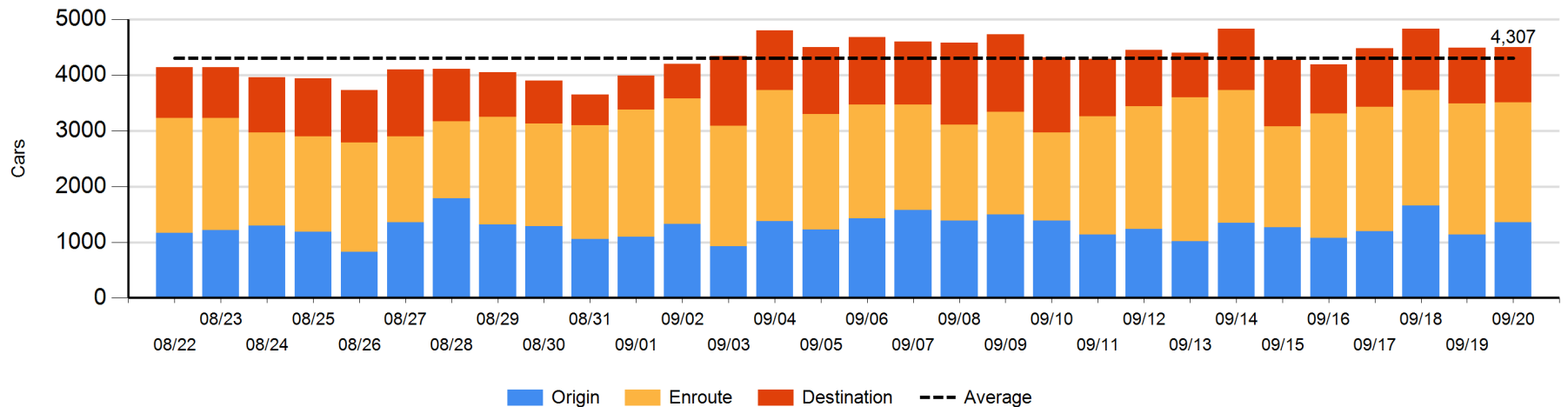
Change in Daily Loads on Wheels By Pipeline Location - Prior 24 Hours

	E Canada	Prince Rupert	Thunder Bay	USA/MEX	Vancouver	Total
CN						
Origin	100	196		-111	181	366
Enroute	-63	-147	-125	101	-188	-422
Destination	2	102	88	-4	183	371
	39	151	-37	-14	176	315
CP						
Origin	1		49	-42	214	222
Enroute	-5		-172	98	-120	-199
Destination	-1		-16	-2	7	-12
	-5		-139	54	101	11
US Rail / Short Line						
Origin						
Enroute	0			33		33
Destination	13			-8	0	5
	13			25	0	38

CN Loads on Wheels by Pipeline Location - 9/20/2018



CP Loads on Wheels by Pipeline Location - 9/20/2018

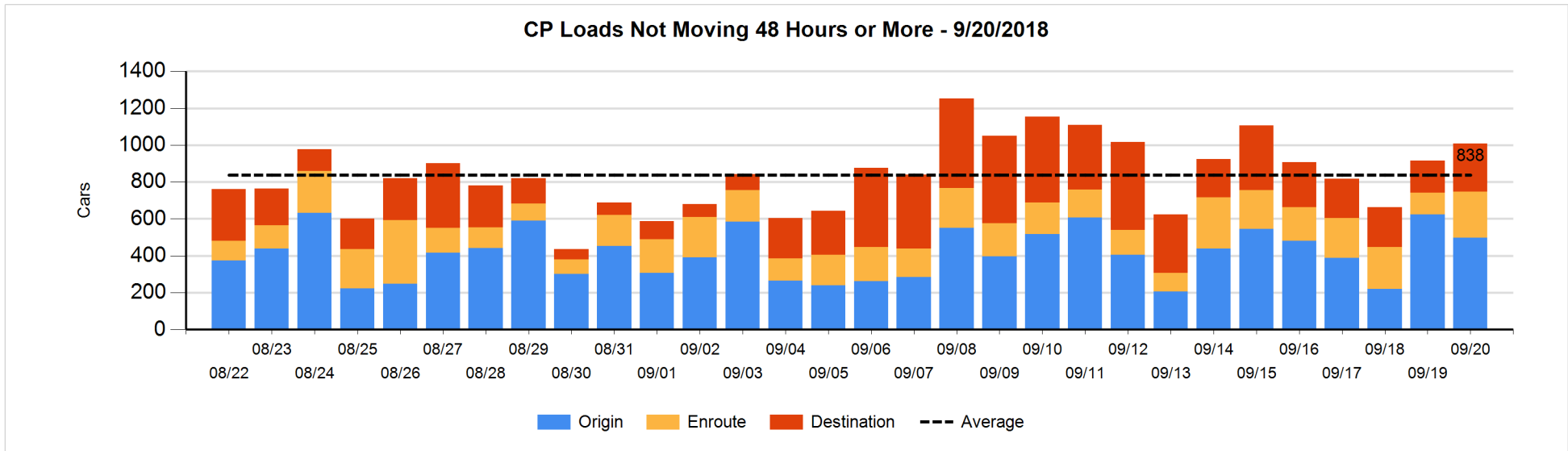
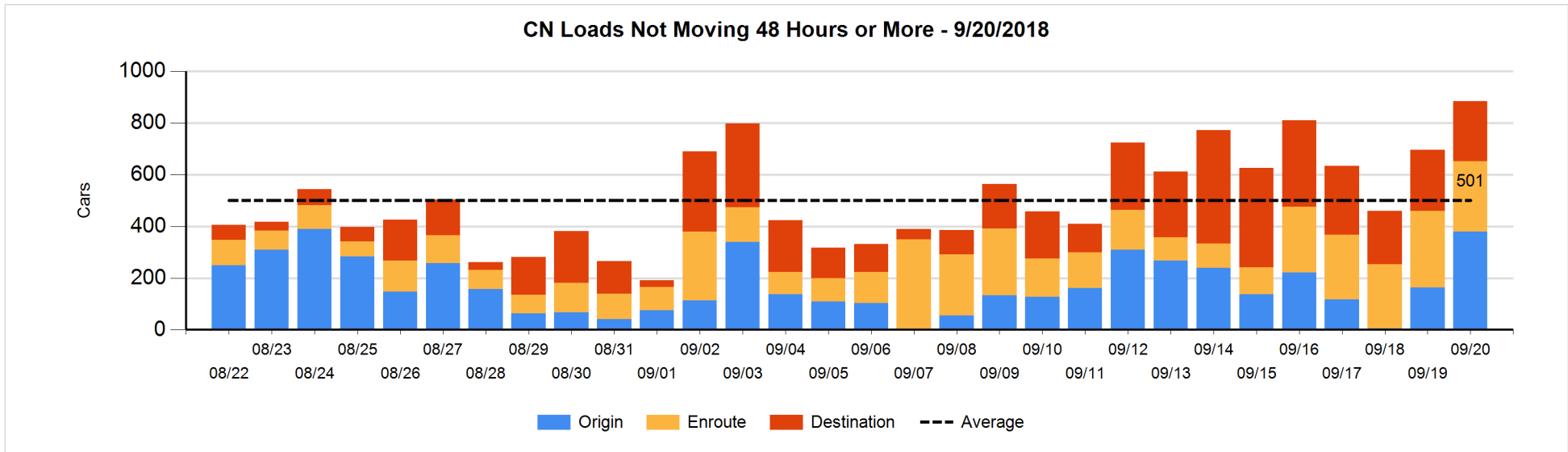


Loads Not Moving 48 Hours or More - 9/20/2018

	E Canada	Prince Rupert	Thunder Bay	USA/MEX	Vancouver	Total
CN						
Origin		155		9	216	380
Enroute	29	16	1	86	140	272
Destination	55	1	126	1	49	232
	84	172	127	96	405	884
CP						
Origin	3			4	490	497
Enroute	5		22	69	153	249
Destination	1		156	12	92	261
	9		178	85	735	1007
US Rail / Short Line						
Origin						
Enroute	7			17		24
Destination	1			24	2	27
	8			41	2	51

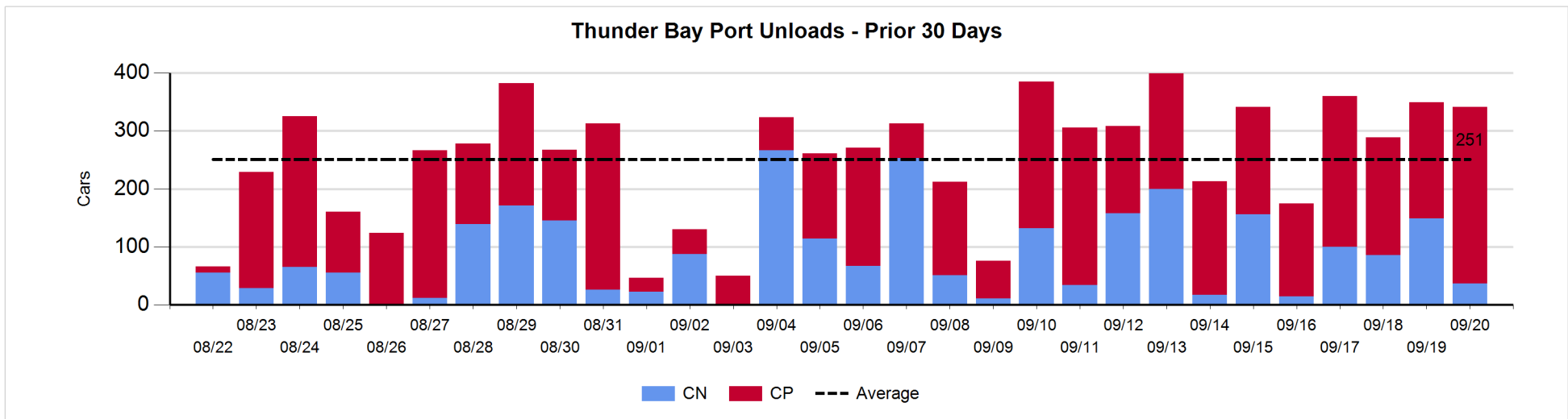
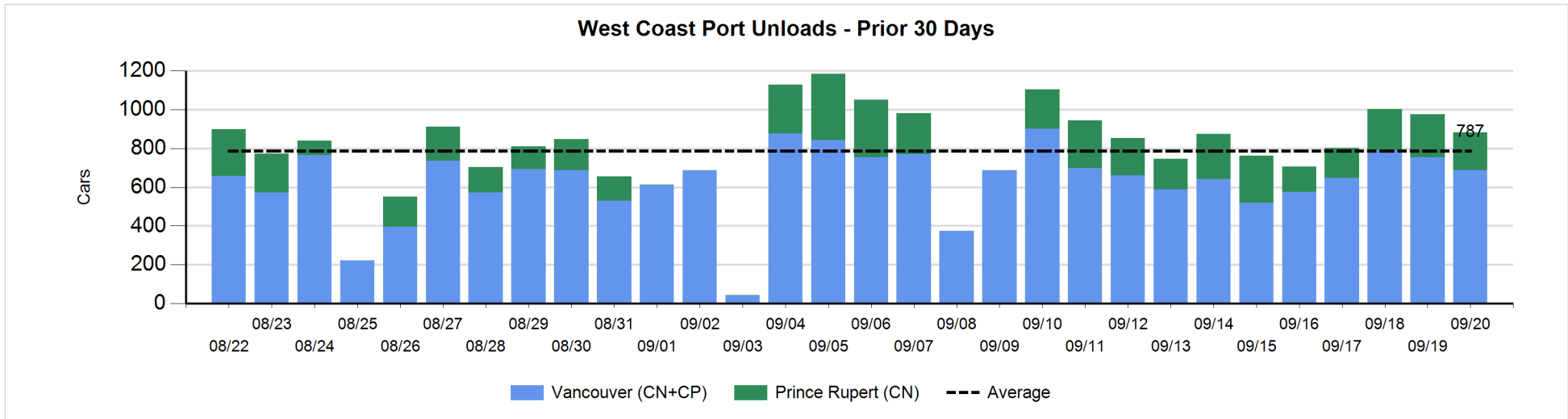
Change in Loads Not Moving 48 Hours or More - 9/20/2018

	E Canada	Prince Rupert	Thunder Bay	USA/MEX	Vancouver	Total
CN						
Origin		111		0	106	217
Enroute	-42	14	0	-1	5	-24
Destination	-5	0	101	-1	-101	-6
	-47	125	101	-2	10	187
CP						
Origin	1			-27	-100	-126
Enroute	1		0	1	128	130
Destination	0		49	3	35	87
	2		49	-23	63	91
US Rail / Short Line						
Origin						
Enroute	7			-3		4
Destination	1			-5	-9	-13
	8			-8	-9	-9



Port Unloads - 9/20/2018

	Prince Rupert	Vancouver	West Coast Total	Thunder Bay	Total
CN	196	278	474	37	511
CP		408	408	304	712
	196	686	882	341	1,223



Port Terminal Status

Vancouver

Daily Activity for 9/20/2018

	Cars Arrived	Cars Received in Interchange	Cars Delivered in Interchange	Cars Placed for Unloading	Loads on Wheels at Destination As of 9/20/2018
CN	326	122	106	360	516
CP	555	101	122	413	553
SRY		5		5	21

Port Unloads

	09/20	09/19	Week To Date	Last Week
CN	278	337	1,170	2,011
CP	408	416	1,705	2,570
SRY	5	4	21	41

Age Profile of Loaded Cars Waiting Placement for Unloading

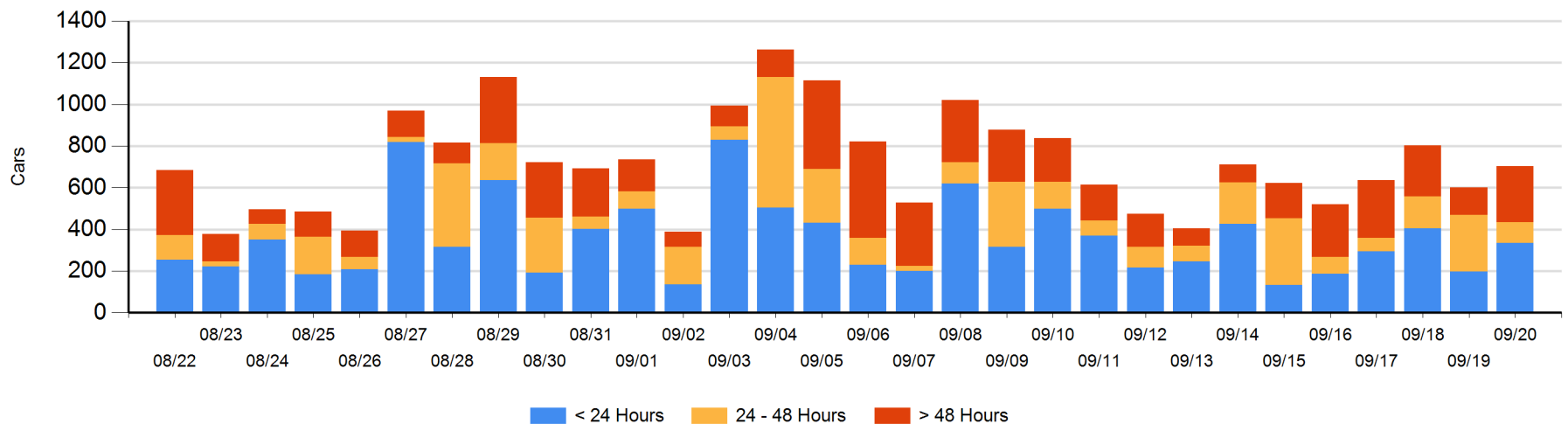
Today

	< 24 Hrs	24 - 48 Hrs	> 48-72 Hrs	> 72 Hrs	Total On Hand
CN	109	13	118	45	285
CP	227	86	91	15	419
SRY					0

Change in Last 24 Hours

	< 24 Hrs	24-48 Hrs	48 - 72 Hrs	> 72 Hrs
CN	96	-143	81	13
CP	42	-28	78	-35
SRY				

Loaded Cars on Hand Vancouver Waiting for Placement - Last 30 Days All Railways



Port Terminal Status

Prince Rupert

Daily Activity for 9/20/2018

	Cars Arrived	Cars Received in Interchange	Cars Delivered in Interchange	Cars Placed for Unloading	Loads on Wheels at Destination As of 9/20/2018
CN	298			365	210

Port Unloads

	09/20	09/19	Week To Date	Last Week
CN	196	223	789	1,410

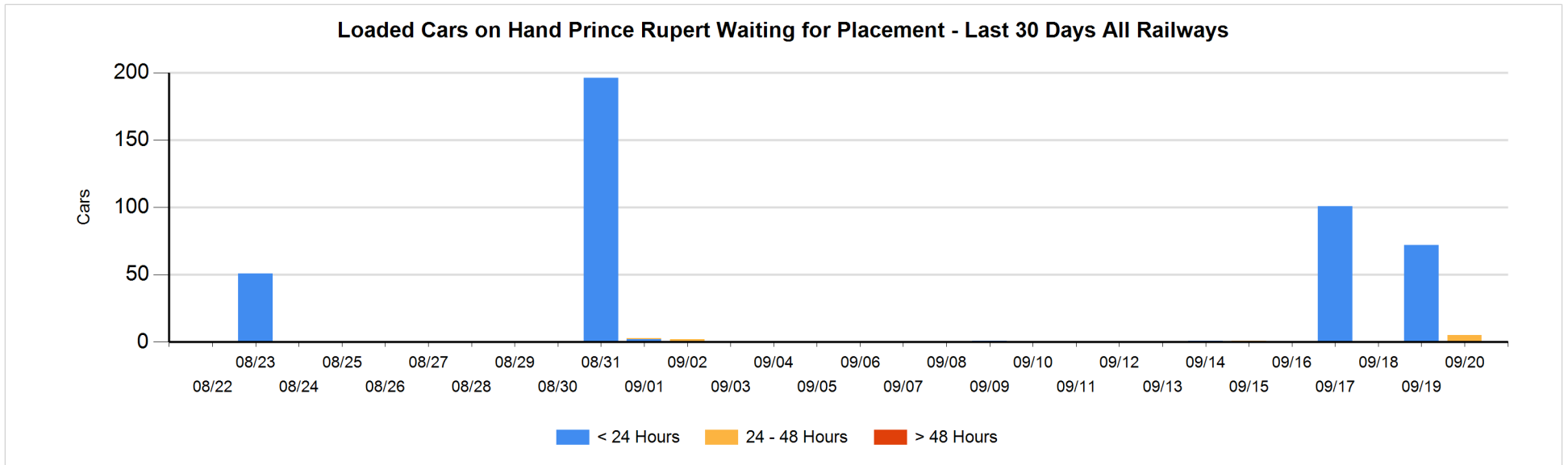
Age Profile of Loaded Cars Waiting Placement for Unloading

Today

	< 24 Hrs	24 - 48 Hrs	> 48-72 Hrs	> 72 Hrs	Total On Hand
CN		5			5

Change in Last 24 Hours

	< 24 Hrs	24-48 Hrs	48 - 72 Hrs	> 72 Hrs
CN	-72	5		



Port Terminal Status

Thunder Bay

Daily Activity for 9/20/2018

	Cars Arrived	Cars Received in Interchange	Cars Delivered in Interchange	Cars Placed for Unloading	Loads on Wheels at Destination As of 9/20/2018
CN	125			41	253
CP	286			275	422

Port Unloads

	09/20	09/19	Week To Date	Last Week
CN	37	149	372	711
CP	304	200	967	1,416

Age Profile of Loaded Cars Waiting Placement for Unloading

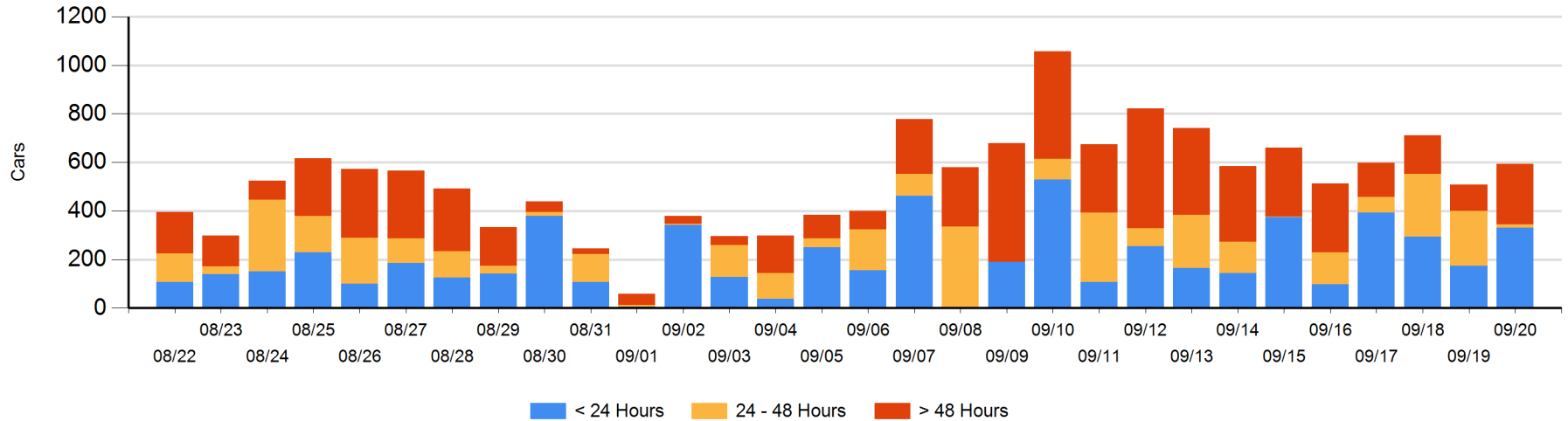
Today

	< 24 Hrs	24 - 48 Hrs	> 48-72 Hrs	> 72 Hrs	Total On Hand
CN	84		102	15	201
CP	246	15	58	74	393

Change in Last 24 Hours

	< 24 Hrs	24-48 Hrs	48 - 72 Hrs	> 72 Hrs
CN	84	-102	102	-10
CP	71	-109	44	5

Loaded Cars on Hand Thunder Bay Waiting for Placement - Last 30 Days All Railways



Measurement Definitions

Loads on Wheels	<p>Count of loaded rail cars including all rail cars that have been released loaded at origin and have not been reported by the railway as unloaded at destination.</p> <p>Counts include all rail cars (hopper cars and boxcars) moving within a pipeline.</p>
Loads Not Moving	<p>Loaded rail cars for which the railways have not reported a movement event for 48 hours or more whether the rail car is at origin, enroute or at destination.</p>
Port Unloads	<p>Count of rail cars reported by railways as unloaded at the western port destinations of Vancouver, Prince Rupert and Thunder Bay.</p> <p>Unload counts include all rail cars (hopper cars and boxcars) unloaded by all receivers including major port terminals, transloaders and other receivers.</p>
Cars Arrived	<p>Count of rail cars reported as arrived at the destination railway terminal.</p>
Cars Received in Interchange	<p>Count of rail cars received in interchange by each railway within a destination railway terminal. Interchange activity is tracked for the Vancouver and Thunder Bay pipelines as applicable.</p>
Cars Delivered in Interchange	<p>Count of rail cars delivered in interchange by each railway within a destination railway terminal. Interchange activity is tracked for the Vancouver and Thunder Bay pipelines as applicable.</p>
Cars Placed for Unloading	<p>Count of rail cars reported by the railways as placed loaded at the receiver's facility for unloading.</p>
Loads on Wheels at Destination	<p>Count of rail cars that remain under load within the destination railway terminal including rail cars that have been reported as placed for unloading but not yet reported as unloaded.</p>
Waiting Placement for Unloading	<p>Count of rail cars that have been reported as arrived at the destination railway terminal but not reported as placed for unloading by the railway.</p> <p>For the Ports of Vancouver, Prince Rupert and Thunder Bay the count of rail cars waiting placement for unloading is categorized by age – i.e. the elapsed time from arrival at destination to the current report date.</p>