

SPEED READ

- Loads on wheels rose overnight, reflecting higher CP volumes offset by a decline in CN volumes. On a net basis, volumes increased due to higher volumes across all corridors other than Thunder Bay.
- Network fluidity deteriorated overnight, led by an increase in idle car counts on both CN and CP by 38% (+215) and 14% (+121), respectively. The total count of cars for 4+ days on both railways declined 20% (-159) overnight - presently at 647 cars.
- Four days in Week 53 unloads now ahead of prior week's performance by 750 unloads, reflecting improved week over week performance at Thunder Bay and Vancouver offset by lower unloads at Prince Rupert.

=====

Loads on Wheels

- Loads on wheels rose 5% (+378) overnight, due to higher volumes on CP offset by lower volumes on CN - combined total at 7,494 and 2% below the trailing 30-day average.
- On a net basis, the rise in loads on wheels indicates higher volumes across all corridors other than Thunder Bay.
- CN volumes decreased 2% (-62) overnight and have now decreased for the fourth consecutive day, with lower traffic in the Thunder Bay, E. Canada and USA/MEX corridors offset by higher volumes in the Vancouver and Prince Rupert corridors. System wide CN loads on wheels currently at 3,184, the lowest seen in the last 30 days, and 19% below the trailing 30-day average.
- CP volumes increased significantly by 12% (+445) overnight, driven by a rise in volumes across all corridors - Vancouver, Thunder Bay, USA/MEX and E. Canada. CP system wide loads on wheels currently at 4,175 and 16% above the trailing 30-day average.
- Vancouver currently at 5,138, the highest seen in the last 30 days, increased 7% (+330) overnight, now 14% above the trailing 30-day average.
- The Prince Rupert pipeline currently at 177, increased 3% (+5) overnight, and 83% below the trailing 30-day average.
- Thunder Bay volumes fell 6% (-82) overnight - currently at 1,242 and 8% below the trailing 30-day average, with 88% of traffic moving on CP.

Hopper Car Rationing

- No hopper cars were rationed by either CN or CP in week 52.

Loads Not Moving

- **The count of cars not moving for 48+ hours increased for the third consecutive day, up 24% (+336) overnight, reflecting higher counts on both CN and CP. Idle car counts currently at 1,760, the highest seen in the last 30 days, and 53% above the trailing 30-day average.**
- CN
 - **The count of idle cars for 48+ hours increased 38% (+215) overnight - presently at 776 cars.**
 - The number of cars idle for 4+ days gained 14% (+44) overnight and have now increased for the fifth consecutive day - now at 366 cars.
 - The count of cars not moving for 7+ days increased for the third consecutive day, up 29% (+52) overnight - currently at 229 cars, the highest seen in the last 30 days.
 - Vancouver represents 86% of all idle cars.
 - In total 26% of all idle cars are dwelling at origin locations.
- CP
 - **CP idle car counts for 48+ hours increased for the sixth consecutive day, up 14% (+121) overnight - currently at 984 cars, the highest seen in the last 30 days.**

- The number of cars idle for 4+ days fell 42% (-203) overnight - currently at 281 cars.
- The number of cars idle for 7+ days decreased significantly by 58% (-74) overnight - currently at 53 cars.
- Vancouver accounts for 87% of all idle cars.
- In total 50% of all idle cars are dwelling at origin locations.

Port Performance

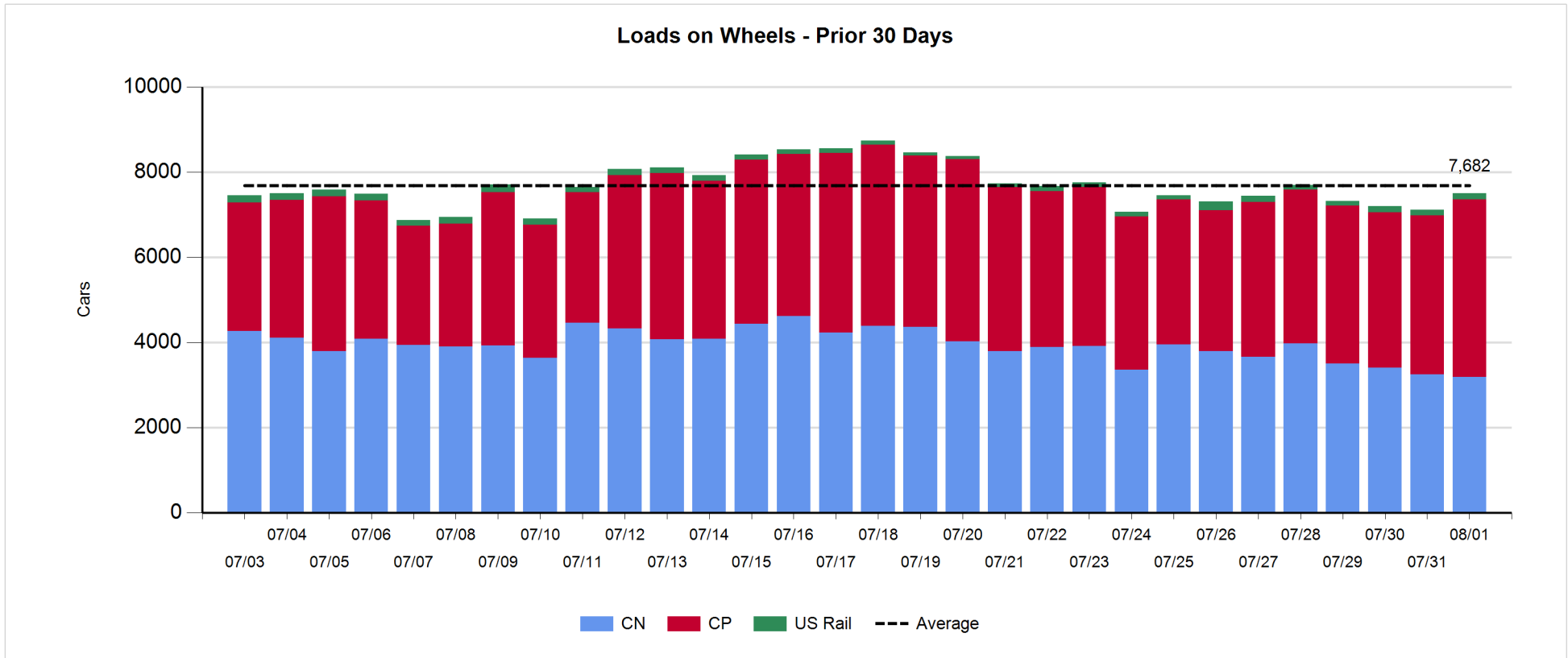
- CN and CP reported a total of 854 cars unloaded at the three major ports, now 13% below the trailing 30-day average. Four days in Week 53 unloads now ahead of last week's pace by 750 unloads, reflecting higher unloads at Thunder Bay and Vancouver offset by lower unloads at Prince Rupert.
- Vancouver
 - 487 unloads reported by CN and CP at the Port of Vancouver; CN - 165 and CP - 322. Four days in Week 53 unloads are tracking ahead of last week's performance by less than 400 unloads.
 - There are 1,150 cars on site at Vancouver with fewer than 400 cars arriving at the port in the last 24 hours.
 - CN and CP have more than 850 cars in British Columbia en route to Vancouver, with more than 450 cars at Kamloops and west, and 83% of traffic moving on CP.
- Prince Rupert
 - Prince Rupert reported 70 unloads, now behind last week's unloads after four days by more than 200 unloads.
 - Loads on wheels now below 1,000 cars - now at 177 cars.
 - There are 50 cars west of Jasper en route to Prince Rupert.
 - There are 22 cars on site at Prince Rupert with 15 cars arriving at the port in the last 24 hours.
- Thunder Bay
 - 297 unloads were reported at Thunder Bay yesterday. Four days in Week 53 unloads are tracking ahead of last week's pace by more than 550 unloads.
 - There are around 600 cars on site at Thunder Bay with more than 200 cars arriving at the port in the prior 24 hours.
 - There are 250 cars en route to Thunder Bay from Winnipeg and east.

Daily Loads on Wheels - 8/1/2019

	E Canada	Prince Rupert	Thunder Bay	USA/MEX	Vancouver	Total
CN	371	177	153	129	2,354	3,184
CP	124		1,089	207	2,755	4,175
Short Line	18				29	47
US Rail				88		88
	513	177	1,242	424	5,138	7,494

Change in Loads on Wheels - Prior 24 Hours

	E Canada	Prince Rupert	Thunder Bay	USA/MEX	Vancouver	Total
CN	-36	5	-102	-3	74	-62
CP	52		20	100	273	445
Short Line	-1				-17	-18
US Rail				13		13
	15	5	-82	110	330	378

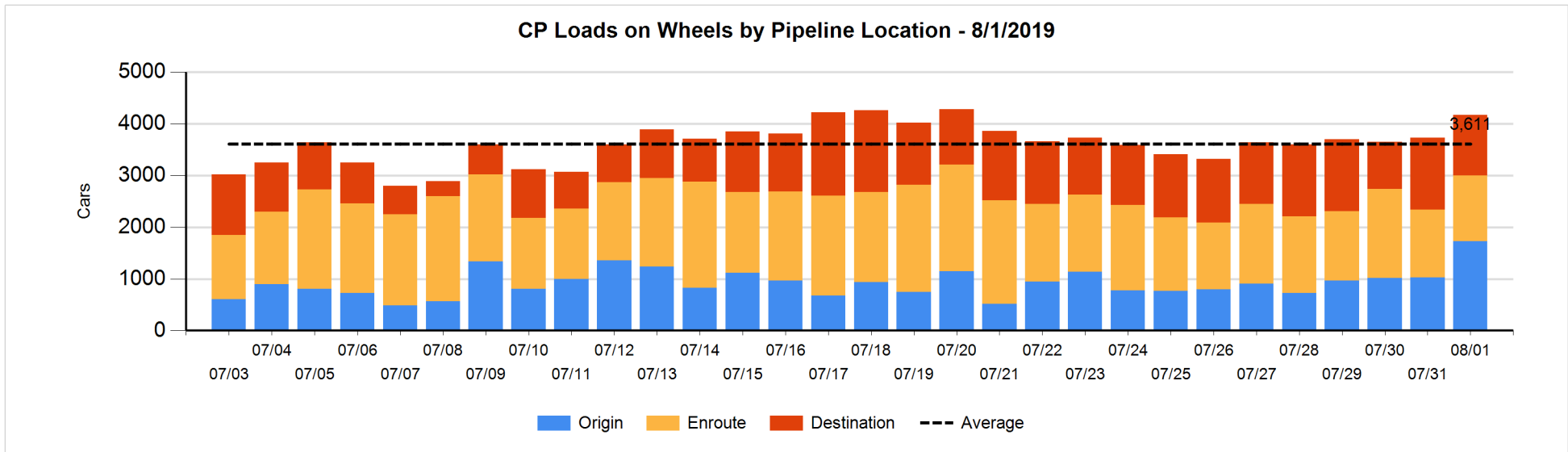
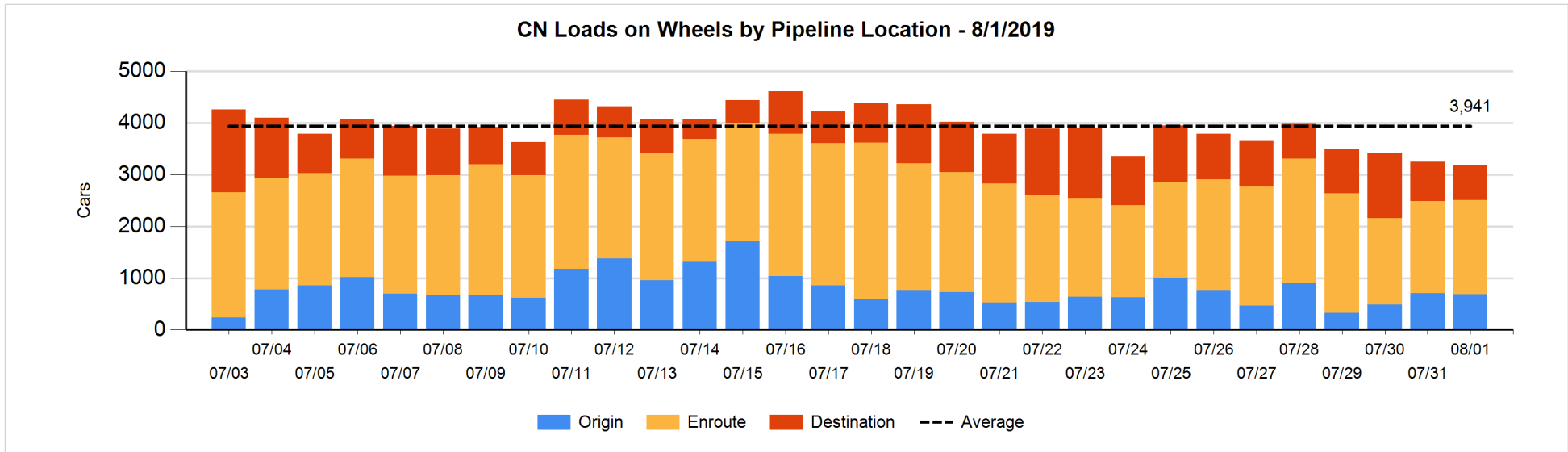


Daily Loads on Wheels By Pipeline Location - 8/1/2019

	E Canada	Prince Rupert	Thunder Bay	USA/MEX	Vancouver	Total
CN						
Origin	36	75		25	545	681
Enroute	230	80	99	88	1,330	1,827
Destination	105	22	54	16	479	676
	371	177	153	129	2,354	3,184
CP						
Origin	54		388	203	1,083	1,728
Enroute	66		169	4	1,028	1,267
Destination	4		532		644	1,180
	124		1,089	207	2,755	4,175
US Rail / Short Line						
Origin						
Enroute				74		74
Destination	18			14	29	61
	18			88	29	135

Change in Daily Loads on Wheels By Pipeline Location - Prior 24 Hours

	E Canada	Prince Rupert	Thunder Bay	USA/MEX	Vancouver	Total
CN						
Origin	10	75	-99	-4	-9	-27
Enroute	1	-15	96	4	-36	50
Destination	-47	-55	-99	-3	119	-85
	-36	5	-102	-3	74	-62
CP						
Origin	23		151	100	432	706
Enroute	29		-145	0	70	-46
Destination	0		14		-229	-215
	52		20	100	273	445
US Rail / Short Line						
Origin						
Enroute				14		14
Destination	-1			-1	-17	-19
	-1			13	-17	-5

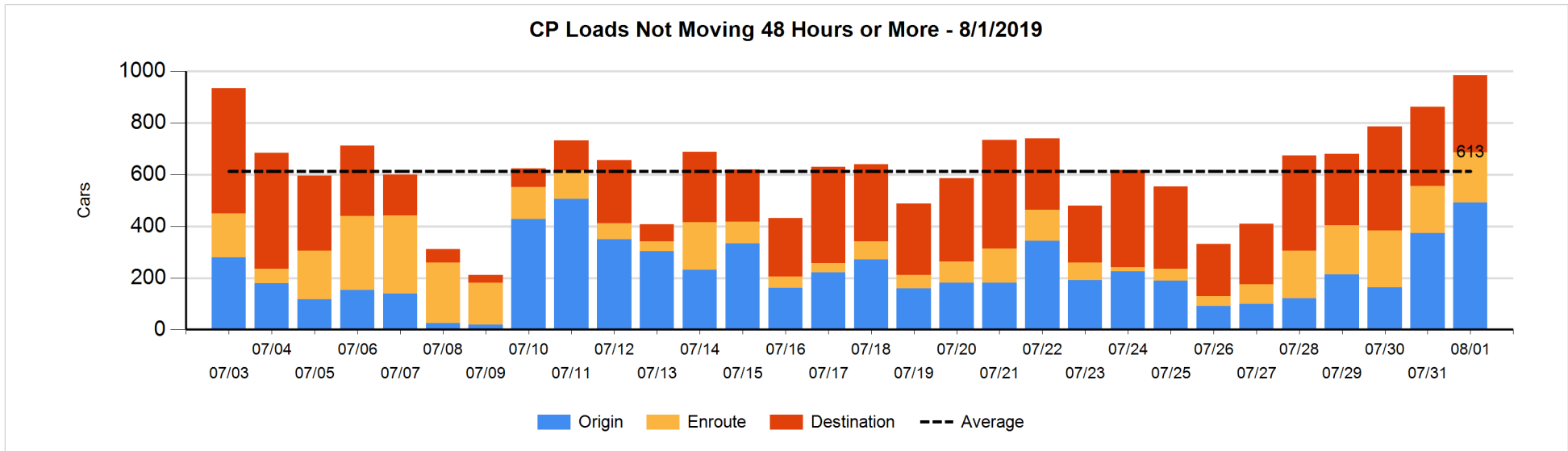
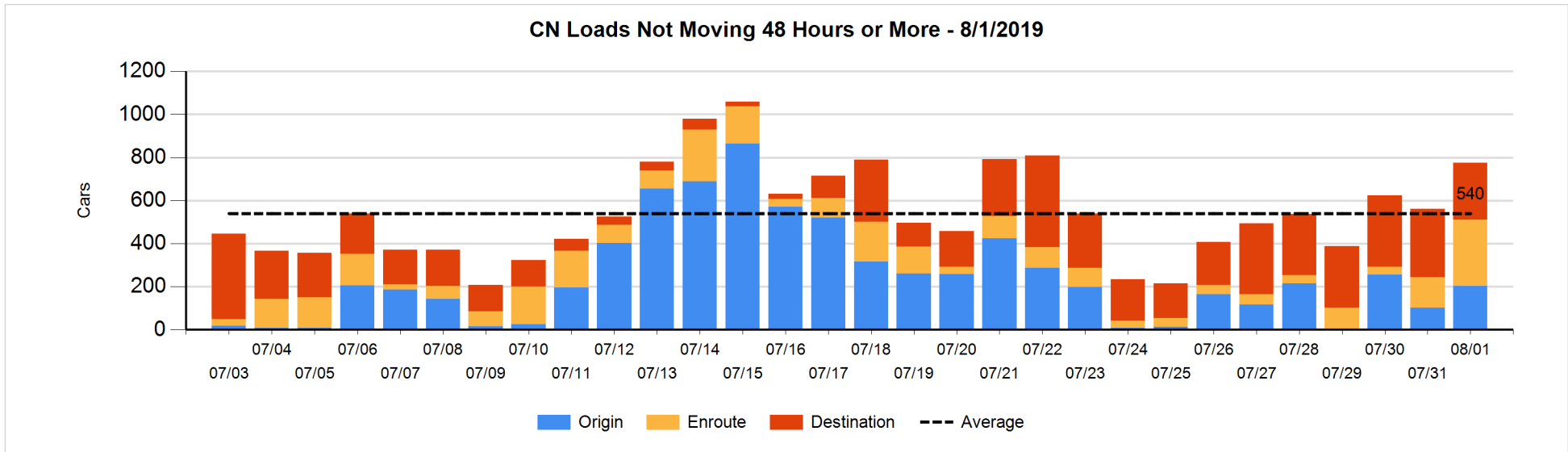


Loads Not Moving 48 Hours or More - 8/1/2019

	E Canada	Prince Rupert	Thunder Bay	USA/MEX	Vancouver	Total
CN						
Origin					203	203
Enroute	7	38		7	255	307
Destination	6	6	36	7	211	266
	13	44	36	14	669	776
CP						
Origin	1		48	1	442	492
Enroute	2		2	4	185	193
Destination	4		62		233	299
	7		112	5	860	984
US Rail / Short Line						
Origin						
Enroute				12		12
Destination	18			10	25	53
	18			22	25	65

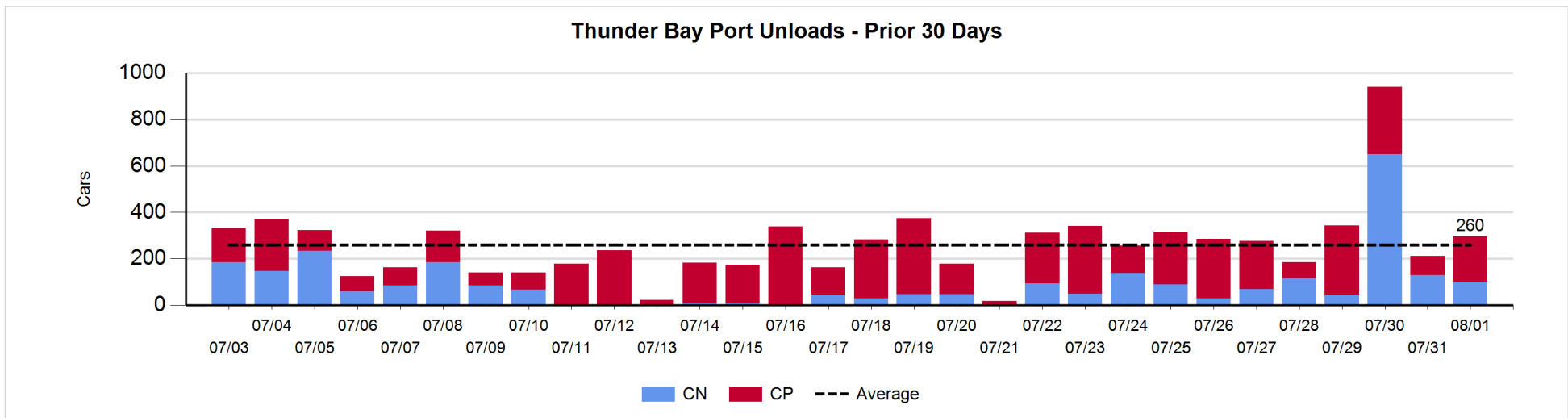
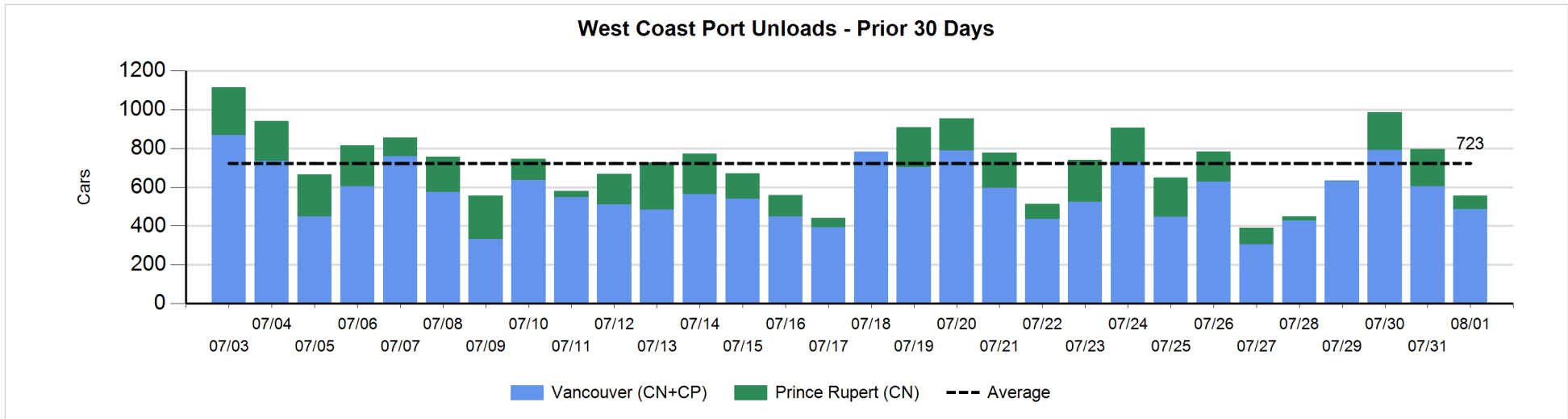
Change in Loads Not Moving 48 Hours or More - 8/1/2019

	E Canada	Prince Rupert	Thunder Bay	USA/MEX	Vancouver	Total
CN						
Origin					100	100
Enroute	1	20		6	139	166
Destination	-7	0	-14	5	-35	-51
	-6	20	-14	11	204	215
CP						
Origin	-6		-26	0	150	118
Enroute	1		-28	3	36	12
Destination	0		-14		5	-9
	-5		-68	3	191	121
US Rail / Short Line						
Origin						
Enroute				-1		-1
Destination	15			7	-5	17
	15			6	-5	16



Port Unloads - 8/1/2019

	Prince Rupert	Vancouver	West Coast Total	Thunder Bay	Total
CN	70	165	235	100	335
CP		322	322	197	519
	70	487	557	297	854



Port Terminal Status

Vancouver

Daily Activity for 8/1/2019

	Cars Arrived	Cars Received in Interchange	Cars Delivered in Interchange	Cars Placed for Unloading	Loads on Wheels at Destination As of 8/1/2019
CN	155	16	104	190	479
CP	231	104	16	190	644
SRY				10	29

Port Unloads

	08/01	07/31	Week To Date	Last Week
CN	165	143	765	1,272
CP	322	461	1,746	2,223
SRY	17	6	48	58

Age Profile of Loaded Cars Waiting Placement for Unloading

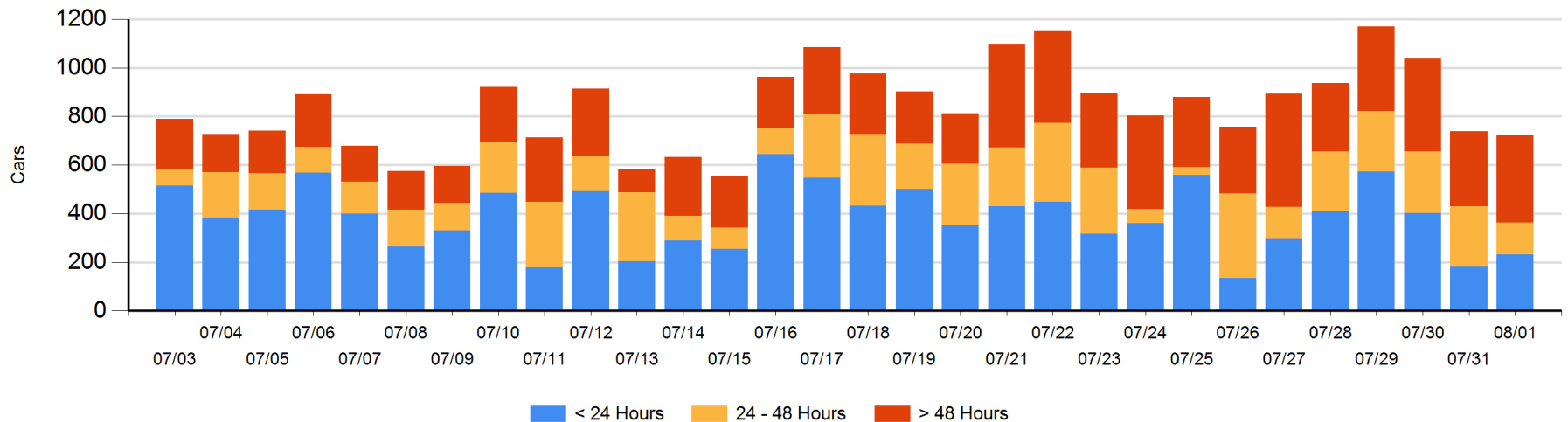
Today

	< 24 Hrs	24 - 48 Hrs	> 48-72 Hrs	> 72 Hrs	Total On Hand
CN	85		12	59	156
CP	147	130	106	185	568
SRY					0

Change in Last 24 Hours

	< 24 Hrs	24-48 Hrs	48 - 72 Hrs	> 72 Hrs
CN	61	-90	12	-15
CP	-9	-29	73	-17
SRY				

Loaded Cars on Hand Vancouver Waiting for Placement - Last 30 Days All Railways



Port Terminal Status

Prince Rupert

Daily Activity for 8/1/2019

	Cars Arrived	Cars Received in Interchange	Cars Delivered in Interchange	Cars Placed for Unloading	Loads on Wheels at Destination As of 8/1/2019
CN	15			16	22

Port Unloads

	08/01	07/31	Week To Date	Last Week
CN	70	192	462	939

Age Profile of Loaded Cars Waiting Placement for Unloading

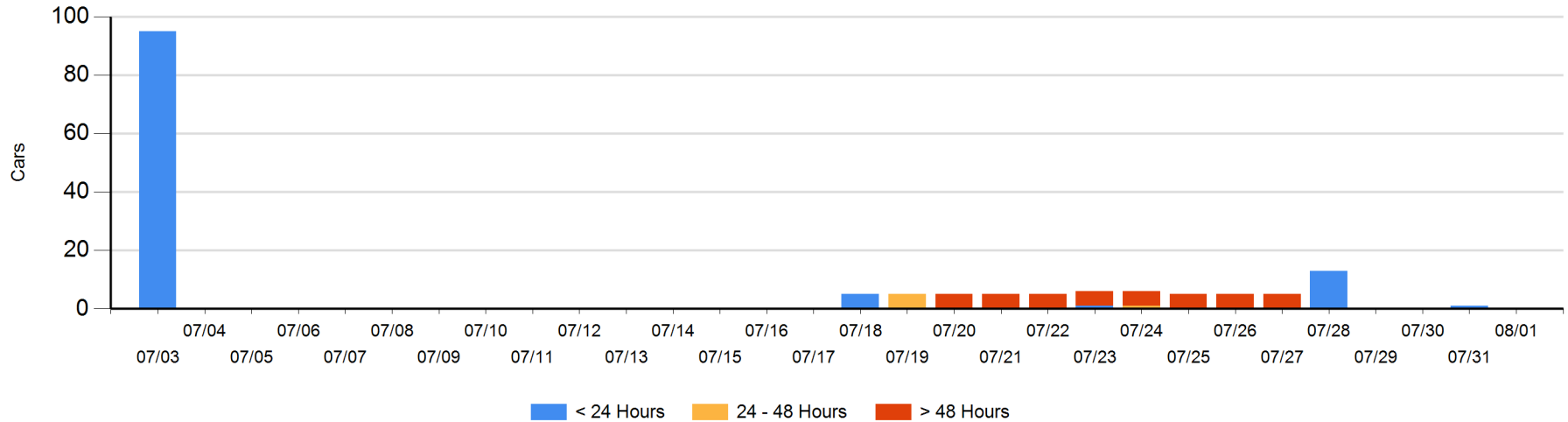
Today

	< 24 Hrs	24 - 48 Hrs	> 48-72 Hrs	> 72 Hrs	Total On Hand
CN					0

Change in Last 24 Hours

	< 24 Hrs	24-48 Hrs	48 - 72 Hrs	> 72 Hrs
CN	-1			

Loaded Cars on Hand Prince Rupert Waiting for Placement - Last 30 Days All Railways



Port Terminal Status

Thunder Bay

Daily Activity for 8/1/2019

	Cars Arrived	Cars Received in Interchange	Cars Delivered in Interchange	Cars Placed for Unloading	Loads on Wheels at Destination As of 8/1/2019
CN	2				54
CP	223			202	532

Port Unloads

	08/01	07/31	Week To Date	Last Week
CN	100	130	925	587
CP	197	82	869	1,383

Age Profile of Loaded Cars Waiting Placement for Unloading

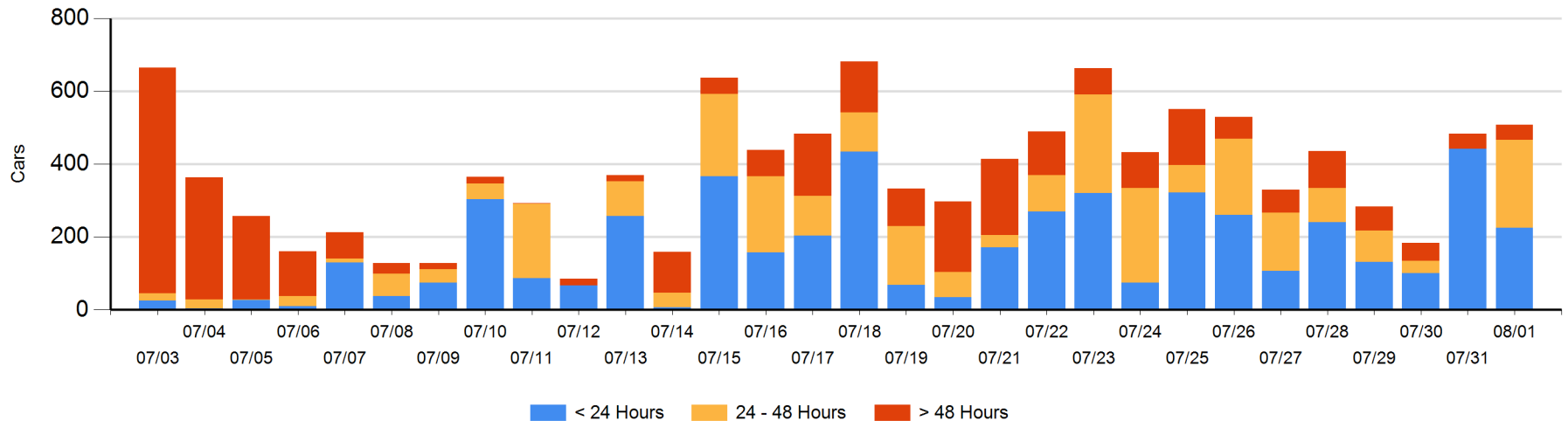
Today

	< 24 Hrs	24 - 48 Hrs	> 48-72 Hrs	> 72 Hrs	Total On Hand
CN	2			5	7
CP	223	242		36	501

Change in Last 24 Hours

	< 24 Hrs	24-48 Hrs	48 - 72 Hrs	> 72 Hrs
CN	2			0
CP	-219	242	-35	35

Loaded Cars on Hand Thunder Bay Waiting for Placement - Last 30 Days All Railways



Measurement Definitions

Loads on Wheels	<p>Count of loaded rail cars including all rail cars that have been released loaded at origin and have not been reported by the railway as unloaded at destination.</p> <p>Counts include all rail cars (hopper cars and boxcars) moving within a pipeline.</p>
Loads Not Moving	<p>Loaded rail cars for which the railways have not reported a movement event for 48 hours or more whether the rail car is at origin, enroute or at destination.</p>
Port Unloads	<p>Count of rail cars reported by railways as unloaded at the western port destinations of Vancouver, Prince Rupert and Thunder Bay.</p> <p>Unload counts include all rail cars (hopper cars and boxcars) unloaded by all receivers including major port terminals, transloaders and other receivers.</p>
Cars Arrived	<p>Count of rail cars reported as arrived at the destination railway terminal.</p>
Cars Received in Interchange	<p>Count of rail cars received in interchange by each railway within a destination railway terminal. Interchange activity is tracked for the Vancouver and Thunder Bay pipelines as applicable.</p>
Cars Delivered in Interchange	<p>Count of rail cars delivered in interchange by each railway within a destination railway terminal. Interchange activity is tracked for the Vancouver and Thunder Bay pipelines as applicable.</p>
Cars Placed for Unloading	<p>Count of rail cars reported by the railways as placed loaded at the receiver's facility for unloading.</p>
Loads on Wheels at Destination	<p>Count of rail cars that remain under load within the destination railway terminal including rail cars that have been reported as placed for unloading but not yet reported as unloaded.</p>
Waiting Placement for Unloading	<p>Count of rail cars that have been reported as arrived at the destination railway terminal but not reported as placed for unloading by the railway.</p> <p>For the Ports of Vancouver, Prince Rupert and Thunder Bay the count of rail cars waiting placement for unloading is categorized by age – i.e. the elapsed time from arrival at destination to the current report date.</p>