

SPEED READ

- Loads on wheels decreased slightly overnight, marking a decline in CN volumes offset by higher CP volumes. On a net basis, volumes fell due to reduced volumes in the Vancouver and E. Canada corridors offset by higher volumes in the Thunder Bay, Prince Rupert and USA/MEX corridors.
- Network fluidity was unchanged overnight, reflecting a decline in idle car counts on CP by 32% (-310) offset by a rise in idle car counts on CN by 212% (+310). The total count of cars for 4+ days on both railways rose significantly by 59% (+153) overnight - presently at 414 cars.
- One day in Week 1 unloads now behind prior week's performance by more than 350 unloads, marking reduced unloads across all three major ports - Vancouver, Thunder Bay and Prince Rupert.

Loads on Wheels

- Loads on wheels decreased slightly by 1% (-95) overnight and have now decreased for the fourth consecutive day, due to reduced volumes on CN offset by higher volumes on CP - combined total at 6,719, the lowest seen in the last 30 days, and 12% below the trailing 30-day average.
- On a net basis, the decline in loads on wheels reflects reduced volumes in the Vancouver and E. Canada corridors offset by higher volumes in the Thunder Bay, Prince Rupert and USA/MEX corridors.
- CN volumes decreased 5% (-166) overnight, with reduced volumes across all corridors other than Prince Rupert and Thunder Bay. System wide CN loads on wheels presently at 2,916, the lowest seen in the last 30 days, and 23% below the trailing 30-day average.
- CP volumes increased slightly by 1% (+50) overnight, driven by an increase in volumes in the Thunder Bay corridor offset by a decline in volumes in the Vancouver corridor. CP system wide loads on wheels presently at 3,659 and 1% below the trailing 30-day average.
- Vancouver currently at 4,252, fell for the fourth consecutive day, down 4% (-184) overnight, now 7% below the trailing 30-day average.
- The Prince Rupert pipeline currently at 171, increased significantly by 24% (+33) overnight, and 81% below the trailing 30-day average.
- Thunder Bay volumes gained 8% (+112) overnight - currently at 1,484 and 6% above the trailing 30-day average, with 71% of traffic moving on CP.

Hopper Car Rationing

- No hopper cars were rationed by either CN or CP in week 52.

Loads Not Moving

- **The count of cars not moving for 48+ hours remained unchanged (00) overnight, marking reduced counts on CP offset by higher counts on CN. Idle car counts presently at 1,112 and 4% below the trailing 30-day average.**
- CN
 - **The count of idle cars for 48+ hours rose significantly by 212% (+310) overnight - presently at 456 cars.**
 - The number of cars idle for 4+ days increased 41% (+20) overnight - now at 69 cars.
 - The count of cars not moving for 7+ days gained 22% (+6) overnight - now at 33 cars.
 - Vancouver represents 52% of all idle cars.
 - In total 27% of all idle cars are dwelling at origin locations.
- CP
 - **CP idle car counts for 48+ hours decreased 32% (-310) overnight - presently at 656 cars.**
 - The number of cars idle for 4+ days gained for the third consecutive day, up 63% (+133) overnight - now at 345 cars.
 - The number of cars idle for 7+ days gained 4% (+3) overnight - currently at 54 cars.

- Vancouver accounts for 54% of all idle cars.
- In total 53% of all idle cars are dwelling at origin locations.

Port Performance

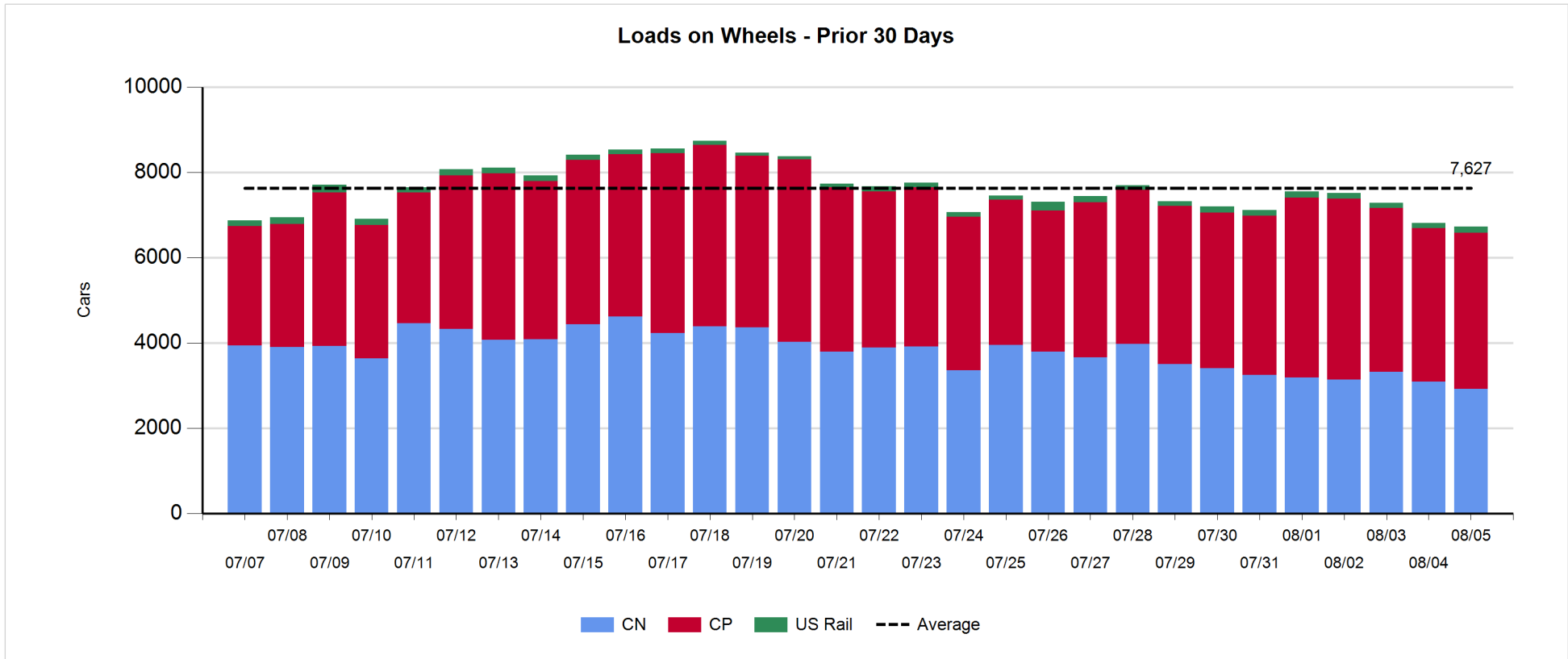
- CN and CP reported a total of 607 cars unloaded at the three major ports, now 35% below the trailing 30-day average. One day in Week 1 unloads now behind last week's pace by more than 350 unloads, marking reduced unloads across all three major ports - Vancouver, Thunder Bay and Prince Rupert.
- Vancouver
 - 607 unloads reported by CN and CP at the Port of Vancouver; CN - 314 and CP - 293. One day in Week 1 unloads are tracking behind last week's performance by around 50 unloads.
 - There are more than 950 cars on site at Vancouver with more than 550 cars arriving at the port in the last 24 hours.
 - CN and CP have more than 600 cars in British Columbia en route to Vancouver, with more than 300 cars at Kamloops and west, and 64% of traffic moving on CN.
- Prince Rupert
 - Prince Rupert reported zero unloads, now behind last week's unloads after one day by 3 unloads.
 - Loads on wheels now below 1,000 cars - currently at 171 cars; lower pipeline volumes are likely a reflection of reduced shipping due to the upcoming annual terminal maintenance shutdown in the coming weeks.
 - There are 17 cars west of Jasper en route to Prince Rupert.
 - There are 17 cars on site at Prince Rupert with 11 cars arriving at the port in the last 24 hours.
- Thunder Bay
 - Zero unloads were reported at Thunder Bay yesterday. One day in Week 1 unloads are tracking behind last week's pace by 350 unloads.
 - There are more than 400 cars on site at Thunder Bay with 50 cars arriving at the port in the prior 24 hours.
 - There are 600 cars en route to Thunder Bay from Winnipeg and east.

Daily Loads on Wheels - 8/5/2019

| | E Canada | Prince Rupert | Thunder Bay | USA/MEX | Vancouver | Total |
|------------|----------|---------------|-------------|---------|-----------|-------|
| CN | 298 | 171 | 430 | 118 | 1,899 | 2,916 |
| CP | 71 | | 1,054 | 232 | 2,302 | 3,659 |
| Short Line | 19 | | | | 51 | 70 |
| US Rail | | | | 74 | | 74 |
| | 388 | 171 | 1,484 | 424 | 4,252 | 6,719 |

Change in Loads on Wheels - Prior 24 Hours

| | E Canada | Prince Rupert | Thunder Bay | USA/MEX | Vancouver | Total |
|------------|----------|---------------|-------------|---------|-----------|-------|
| CN | -60 | | 33 | 0 | -14 | -125 |
| CP | 0 | | 112 | 1 | -63 | 50 |
| Short Line | 0 | | | | 4 | 4 |
| US Rail | | | | 17 | | 17 |
| | -60 | | 112 | 4 | -184 | -95 |

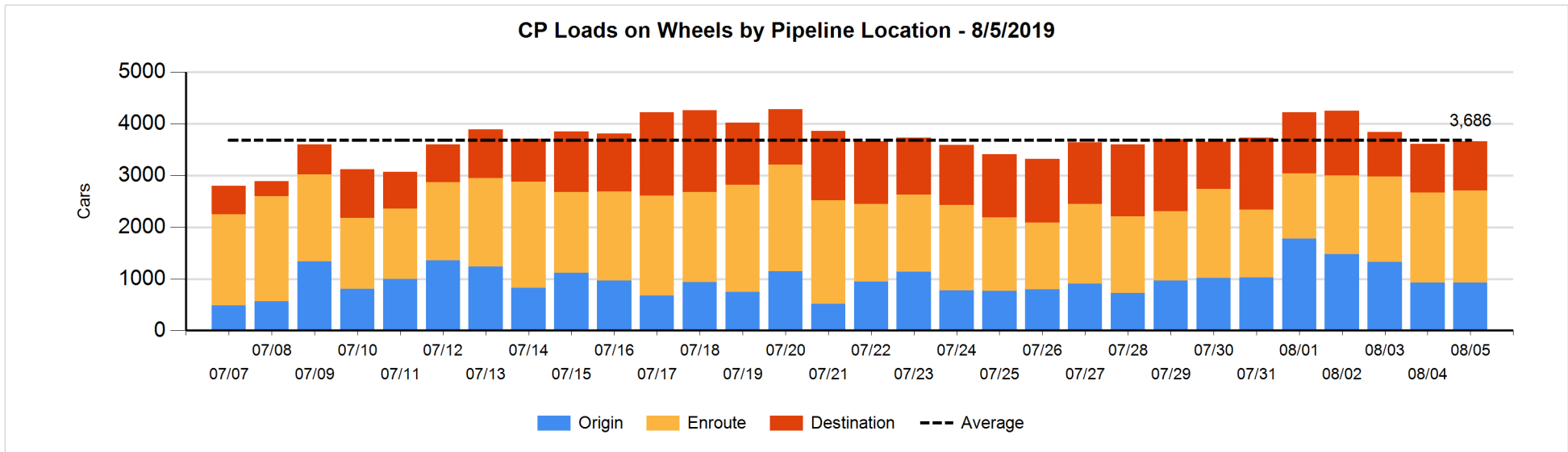
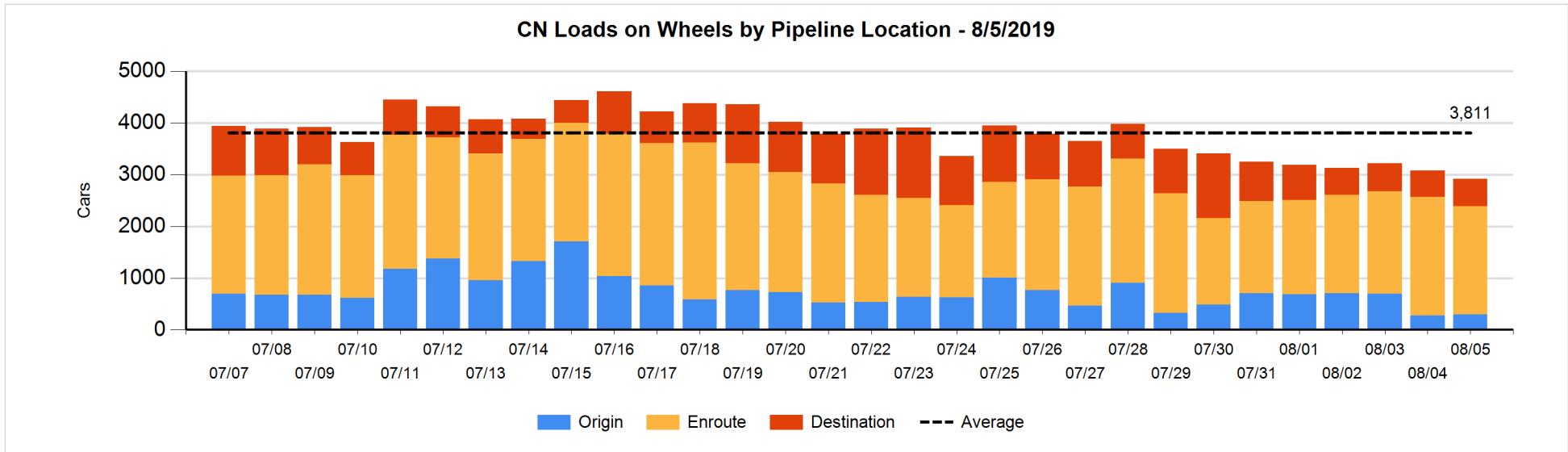


Daily Loads on Wheels By Pipeline Location - 8/5/2019

| | E Canada | Prince Rupert | Thunder Bay | USA/MEX | Vancouver | Total |
|----------------------|----------|---------------|-------------|---------|-----------|-------|
| CN | | | | | | |
| Origin | | 33 | | | 266 | 299 |
| Enroute | 231 | 121 | 324 | 88 | 1,330 | 2,094 |
| Destination | 67 | 17 | 106 | 30 | 303 | 523 |
| | 298 | 171 | 430 | 118 | 1,899 | 2,916 |
| CP | | | | | | |
| Origin | 2 | | 288 | 24 | 612 | 926 |
| Enroute | 69 | | 450 | 183 | 1,077 | 1,779 |
| Destination | | | 316 | 25 | 613 | 954 |
| | 71 | | 1,054 | 232 | 2,302 | 3,659 |
| US Rail / Short Line | | | | | | |
| Origin | | | | | | |
| Enroute | | | | 38 | | 38 |
| Destination | 19 | | | 36 | 51 | 106 |
| | 19 | | | 74 | 51 | 144 |

Change in Daily Loads on Wheels By Pipeline Location - Prior 24 Hours

| | E Canada | Prince Rupert | Thunder Bay | USA/MEX | Vancouver | Total |
|----------------------|----------|---------------|-------------|---------|-----------|-------|
| CN | | | | | | |
| Origin | | 33 | | -2 | -10 | 21 |
| Enroute | -28 | -11 | 0 | -27 | -128 | -194 |
| Destination | -32 | 11 | 0 | 15 | 13 | 7 |
| | -60 | 33 | 0 | -14 | -125 | -166 |
| CP | | | | | | |
| Origin | 0 | | -109 | 0 | 106 | -3 |
| Enroute | 0 | | 177 | -24 | -115 | 38 |
| Destination | | | 44 | 25 | -54 | 15 |
| | 0 | | 112 | 1 | -63 | 50 |
| US Rail / Short Line | | | | | | |
| Origin | | | | | | |
| Enroute | | | | -9 | | -9 |
| Destination | 0 | | | 26 | 4 | 30 |
| | 0 | | | 17 | 4 | 21 |

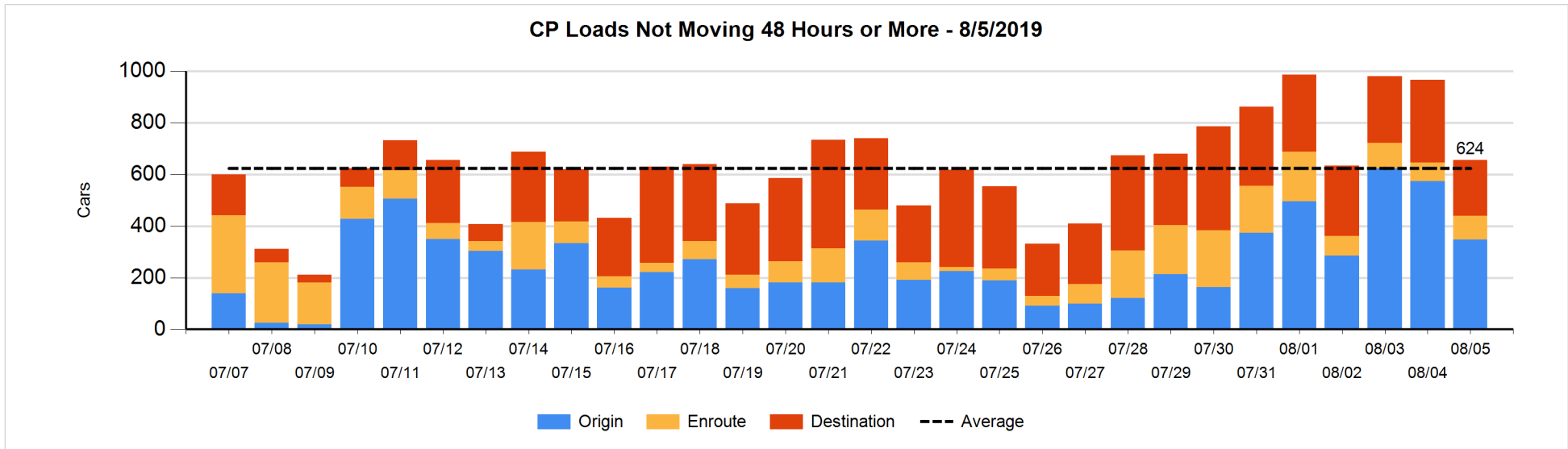
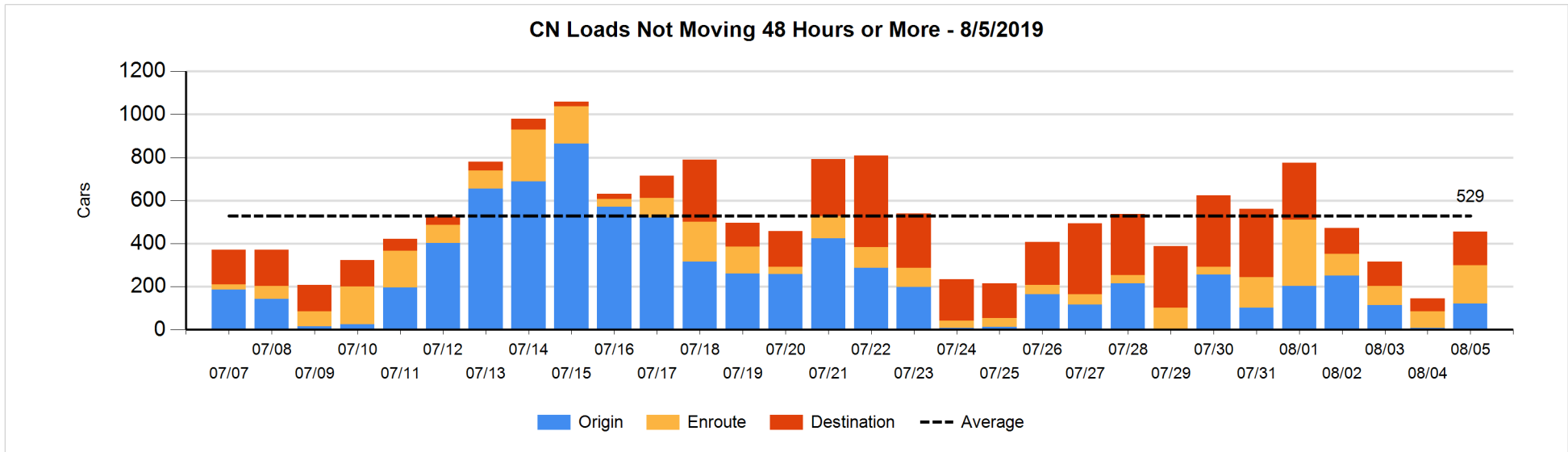


Loads Not Moving 48 Hours or More - 8/5/2019

| | E Canada | Prince Rupert | Thunder Bay | USA/MEX | Vancouver | Total |
|----------------------|----------|---------------|-------------|---------|-----------|-------|
| CN | | | | | | |
| Origin | | | | | 121 | 121 |
| Enroute | 50 | 15 | | 3 | 109 | 177 |
| Destination | 24 | 6 | 106 | 13 | 9 | 158 |
| | 74 | 21 | 106 | 16 | 239 | 456 |
| CP | | | | | | |
| Origin | 2 | | 176 | | 170 | 348 |
| Enroute | 13 | | 20 | 3 | 56 | 92 |
| Destination | | | 88 | | 128 | 216 |
| | 15 | | 284 | 3 | 354 | 656 |
| US Rail / Short Line | | | | | | |
| Origin | | | | | | |
| Enroute | | | | 23 | | 23 |
| Destination | 19 | | | 7 | 20 | 46 |
| | 19 | | | 30 | 20 | 69 |

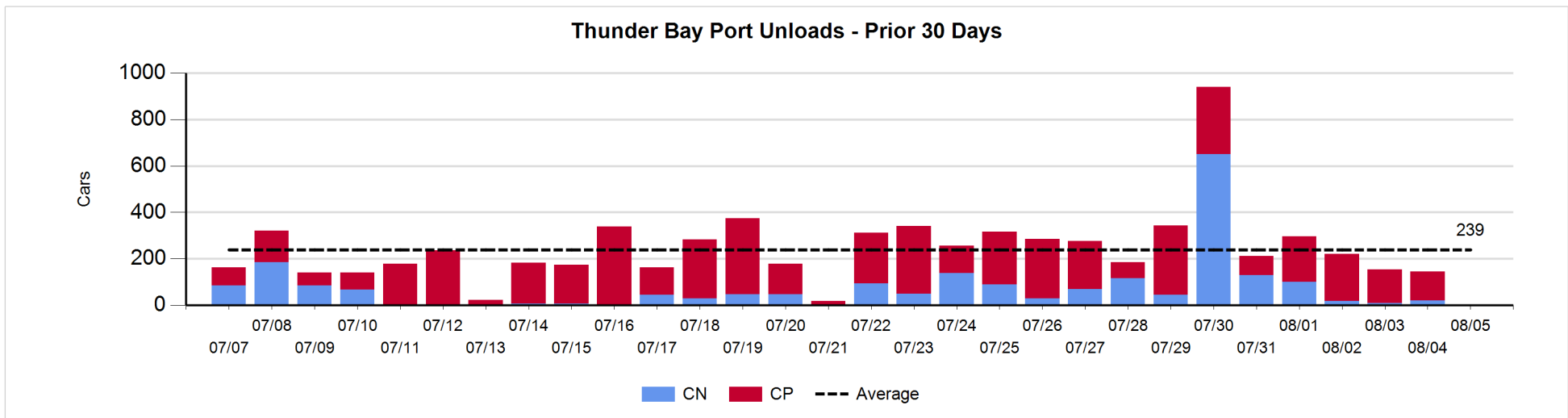
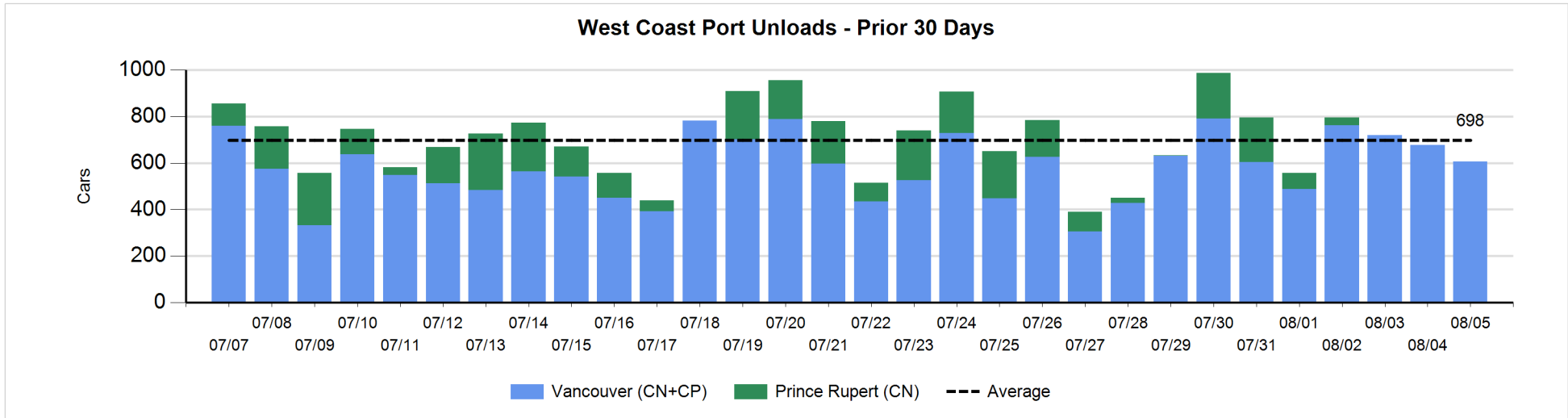
Change in Loads Not Moving 48 Hours or More - 8/5/2019

| | E Canada | Prince Rupert | Thunder Bay | USA/MEX | Vancouver | Total |
|----------------------|----------|---------------|-------------|---------|-----------|-------|
| CN | | | | | | |
| Origin | | | | -2 | 114 | 112 |
| Enroute | 38 | 0 | | -12 | 74 | 100 |
| Destination | -4 | 0 | 99 | 5 | -2 | 98 |
| | 34 | 0 | 99 | -9 | 186 | 310 |
| CP | | | | | | |
| Origin | 0 | | -113 | | -112 | -225 |
| Enroute | 2 | | 0 | 2 | 16 | 20 |
| Destination | | | 3 | | -108 | -105 |
| | 2 | | -110 | 2 | -204 | -310 |
| US Rail / Short Line | | | | | | |
| Origin | | | | | | |
| Enroute | | | | 1 | | 1 |
| Destination | 0 | | | -2 | 4 | 2 |
| | 0 | | | -1 | 4 | 3 |



Port Unloads - 8/5/2019

| | Prince Rupert | Vancouver | West Coast Total | Thunder Bay | Total |
|----|---------------|-----------|------------------|-------------|-------|
| CN | | 314 | 314 | | 314 |
| CP | | 293 | 293 | | 293 |
| | | 607 | 607 | | 607 |



Port Terminal Status

Vancouver

Daily Activity for 8/5/2019

| | Cars Arrived | Cars Received in Interchange | Cars Delivered in Interchange | Cars Placed for Unloading | Loads on Wheels at Destination As of 8/5/2019 |
|-----|--------------|------------------------------|-------------------------------|---------------------------|---|
| CN | 239 | 150 | 63 | 244 | 303 |
| CP | 339 | 63 | 163 | 397 | 613 |
| SRY | | 13 | | 23 | 51 |

Port Unloads

| | 08/05 | 08/04 | Week To Date | Last Week |
|-----|-------|-------|--------------|-----------|
| CN | 314 | 178 | 314 | 1,644 |
| CP | 293 | 499 | 293 | 3,026 |
| SRY | 9 | 1 | 9 | 59 |

Age Profile of Loaded Cars Waiting Placement for Unloading

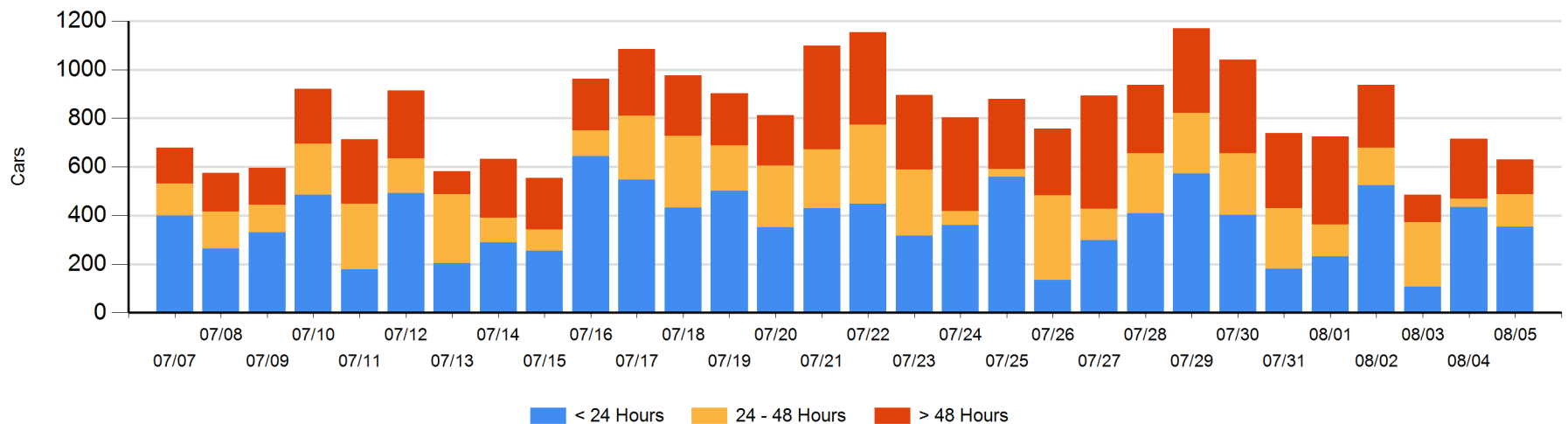
Today

| | < 24 Hrs | 24 - 48 Hrs | > 48-72 Hrs | > 72 Hrs | Total On Hand |
|-----|----------|-------------|-------------|----------|---------------|
| CN | 239 | 22 | 1 | 12 | 274 |
| CP | 115 | 111 | 20 | 110 | 356 |
| SRY | | | | | 0 |

Change in Last 24 Hours

| | < 24 Hrs | 24-48 Hrs | 48 - 72 Hrs | > 72 Hrs |
|-----|----------|-----------|-------------|----------|
| CN | 200 | 11 | -20 | 8 |
| CP | -280 | 87 | -162 | 71 |
| SRY | | | | |

Loaded Cars on Hand Vancouver Waiting for Placement - Last 30 Days All Railways



Port Terminal Status

Prince Rupert

Daily Activity for 8/5/2019

| | Cars Arrived | Cars Received in Interchange | Cars Delivered in Interchange | Cars Placed for Unloading | Loads on Wheels at Destination As of 8/5/2019 |
|----|--------------|------------------------------|-------------------------------|---------------------------|---|
| CN | 11 | | | 11 | 17 |

Port Unloads

| | 08/05 | 08/04 | Week To Date | Last Week |
|----|-------|-------|--------------|-----------|
| CN | | | | 496 |

Age Profile of Loaded Cars Waiting Placement for Unloading

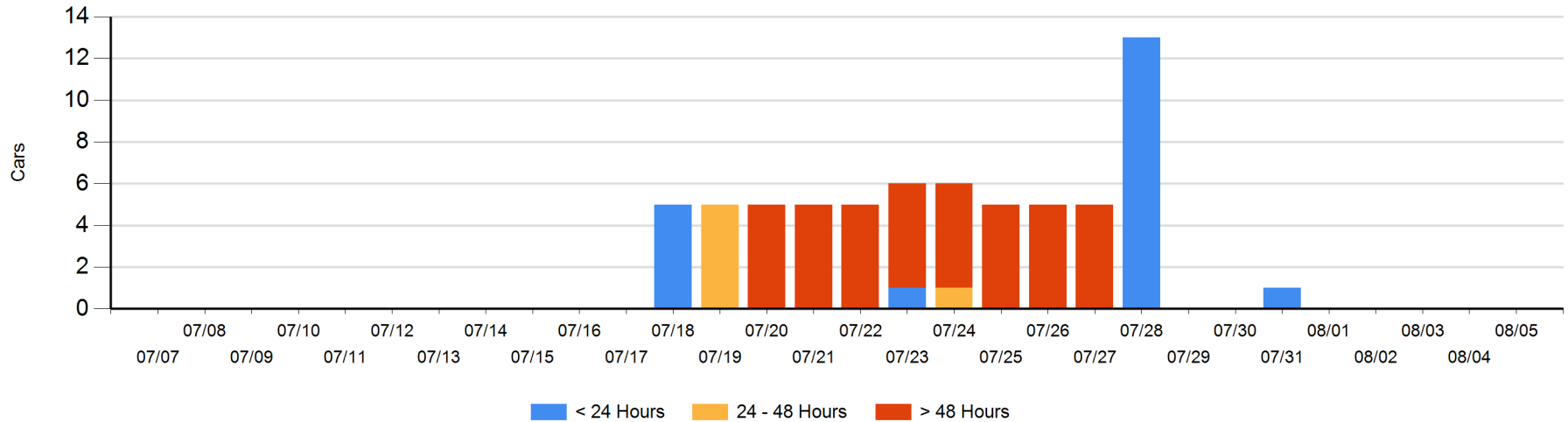
Today

| | < 24 Hrs | 24 - 48 Hrs | > 48-72 Hrs | > 72 Hrs | Total On Hand |
|----|----------|-------------|-------------|----------|---------------|
| CN | | | | | 0 |

Change in Last 24 Hours

| | < 24 Hrs | 24-48 Hrs | 48 - 72 Hrs | > 72 Hrs |
|----|----------|-----------|-------------|----------|
| CN | | | | |

Loaded Cars on Hand Prince Rupert Waiting for Placement - Last 30 Days All Railways



Port Terminal Status

Thunder Bay

Daily Activity for 8/5/2019

| | Cars Arrived | Cars Received in Interchange | Cars Delivered in Interchange | Cars Placed for Unloading | Loads on Wheels at Destination As of 8/5/2019 |
|----|--------------|------------------------------|-------------------------------|---------------------------|---|
| CN | | | | | 106 |
| CP | 44 | | | 184 | 316 |

Port Unloads

| | 08/05 | 08/04 | Week To Date | Last Week |
|----|-------|-------|--------------|-----------|
| CN | | 21 | | 972 |
| CP | | 123 | | 1,340 |

Age Profile of Loaded Cars Waiting Placement for Unloading

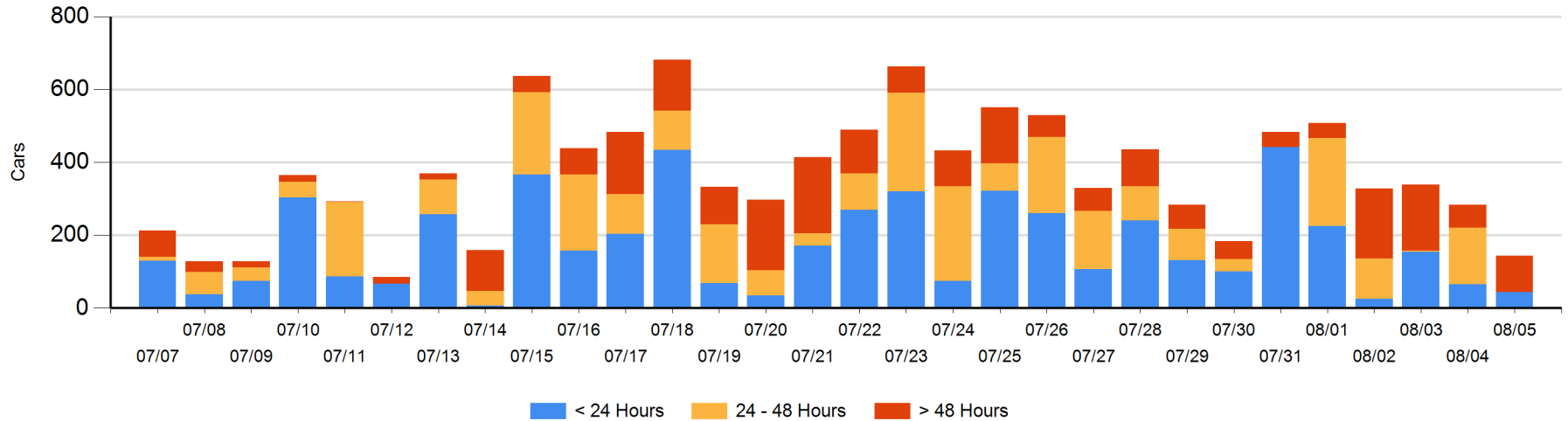
Today

| | < 24 Hrs | 24 - 48 Hrs | > 48-72 Hrs | > 72 Hrs | Total On Hand |
|----|----------|-------------|-------------|----------|---------------|
| CN | | | 34 | | 34 |
| CP | 44 | | 33 | 32 | 109 |

Change in Last 24 Hours

| | < 24 Hrs | 24-48 Hrs | 48 - 72 Hrs | > 72 Hrs |
|----|----------|-----------|-------------|----------|
| CN | | -34 | 34 | |
| CP | -22 | -121 | 30 | -27 |

Loaded Cars on Hand Thunder Bay Waiting for Placement - Last 30 Days All Railways



Measurement Definitions

| | |
|---------------------------------|---|
| Loads on Wheels | <p>Count of loaded rail cars including all rail cars that have been released loaded at origin and have not been reported by the railway as unloaded at destination.</p> <p>Counts include all rail cars (hopper cars and boxcars) moving within a pipeline.</p> |
| Loads Not Moving | <p>Loaded rail cars for which the railways have not reported a movement event for 48 hours or more whether the rail car is at origin, enroute or at destination.</p> |
| Port Unloads | <p>Count of rail cars reported by railways as unloaded at the western port destinations of Vancouver, Prince Rupert and Thunder Bay.</p> <p>Unload counts include all rail cars (hopper cars and boxcars) unloaded by all receivers including major port terminals, transloaders and other receivers.</p> |
| Cars Arrived | <p>Count of rail cars reported as arrived at the destination railway terminal.</p> |
| Cars Received in Interchange | <p>Count of rail cars received in interchange by each railway within a destination railway terminal. Interchange activity is tracked for the Vancouver and Thunder Bay pipelines as applicable.</p> |
| Cars Delivered in Interchange | <p>Count of rail cars delivered in interchange by each railway within a destination railway terminal. Interchange activity is tracked for the Vancouver and Thunder Bay pipelines as applicable.</p> |
| Cars Placed for Unloading | <p>Count of rail cars reported by the railways as placed loaded at the receiver's facility for unloading.</p> |
| Loads on Wheels at Destination | <p>Count of rail cars that remain under load within the destination railway terminal including rail cars that have been reported as placed for unloading but not yet reported as unloaded.</p> |
| Waiting Placement for Unloading | <p>Count of rail cars that have been reported as arrived at the destination railway terminal but not reported as placed for unloading by the railway.</p> <p>For the Ports of Vancouver, Prince Rupert and Thunder Bay the count of rail cars waiting placement for unloading is categorized by age – i.e. the elapsed time from arrival at destination to the current report date.</p> |