

SPEED READ

- Loads on wheels decreased overnight, reflecting lower CP volumes offset by an increase in CN volumes. On a net basis, volumes decreased due to lower traffic in the Vancouver and E Canada corridors.
- Network fluidity deteriorated overnight, led by an increase in idle car counts on both CN and CP by 2% (+7) and 41% (+321), respectively. The total count of cars for 4+ days on both railways decreased 3% (-10) overnight - currently at 321 cars.
- Week 1 unloads finished behind prior week's performance by more than 1,500 unloads, reflecting lower unloads across all three major ports - Vancouver, Thunder Bay and Prince Rupert.

Loads on Wheels

- Loads on wheels decreased 5% (-347) overnight, due to lower traffic on CP offset by higher traffic on CN - combined total at 6,853 and 10% below the trailing 30-day average.
- On a net basis, the decline in loads on wheels indicates lower traffic in the Vancouver and E Canada corridors.
- CN volumes increased 5% (+170) overnight driven primarily by higher volumes in the Vancouver corridor. System wide CN loads on wheels now at 3,459 and 5% below the trailing 30-day average.
- CP volumes fell significantly by 13% (-518) overnight, driven by a decline in volumes in the Vancouver and E Canada corridors. CP system wide loads on wheels currently at 3,322 and 13% below the trailing 30-day average.
- Vancouver currently at 4,352, decreased 7% (-315) overnight, now 5% below the trailing 30-day average.
- The Prince Rupert pipeline now at 278, remained unchanged (0) overnight, and 59% below the trailing 30-day average.
- Thunder Bay volumes increased slightly by (+2) overnight - currently at 1,295 and 13% below the trailing 30-day average, with 80% of traffic moving on CP.

Hopper Car Rationing

- No hopper cars were rationed by either CN or CP in week 53.

Loads Not Moving

- **The count of cars not moving for 48+ hours rose 31% (+327) overnight and have now increased for the third consecutive day, reflecting higher counts on both CN and CP. Idle car counts now at 1,378 and 21% above the trailing 30-day average.**
- CN
 - **The count of idle cars for 48+ hours increased 2% (+7) overnight and have now increased for the third consecutive day - now at 266 cars.**
 - The number of cars idle for 4+ days increased significantly by 237% (+83) overnight - currently at 118 cars.
 - The count of cars not moving for 7+ days decreased 43% (-13) overnight - now at 17 cars.
 - Vancouver represents 84% of all idle cars.
 - In total 82% of all idle cars are dwelling at origin locations.
- CP
 - **CP idle car counts for 48+ hours increased 41% (+321) overnight and have now increased for the third consecutive day - now at 1,112 cars, the highest seen in the last 30 days.**
 - The number of cars idle for 4+ days decreased 31% (-94) overnight - now at 203 cars.
 - The number of cars idle for 7+ days decreased 11% (-7) overnight and have now decreased for the fourth consecutive day - currently at 54 cars.

- Vancouver accounts for 60% of all idle cars.
- In total 44% of all idle cars are dwelling at origin locations.

Port Performance

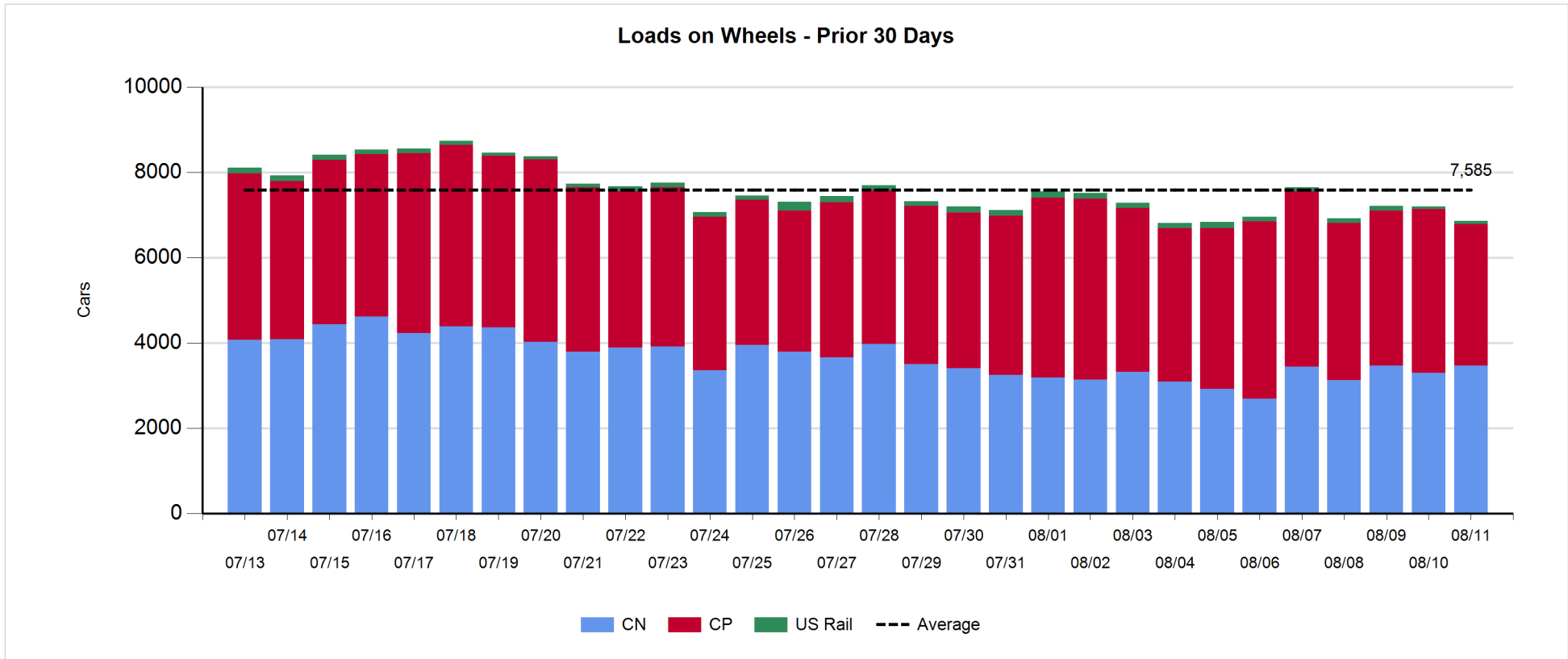
- CN and CP reported a total of 614 cars unloaded at the three major ports, now 35% below the trailing 30-day average. Week 1 unloads finished behind last week's pace by more than 1,500 unloads, reflecting lower unloads across all three major ports - Vancouver, Thunder Bay and Prince Rupert.
- Vancouver
 - 519 unloads reported by CN and CP at the Port of Vancouver; CN - 89 and CP - 430. Week 1 unloads ended behind last week's performance by 400 unloads.
 - There are 950 cars on site at Vancouver with around 450 cars arriving at the port in the last 24 hours.
 - CN and CP have more than 750 cars in British Columbia en route to Vancouver, with more than 400 cars at Kamloops and west, and 59% of traffic moving on CP.
- Prince Rupert
 - Prince Rupert reported zero unloads, ended behind last week's unloads by nearly 450 unloads.
 - Loads on wheels now below 1,000 cars - currently at 278 cars.
 - There are 50 cars west of Jasper en route to Prince Rupert.
 - There are more than 200 cars on site at Prince Rupert with 200 cars arriving at the port in the last 24 hours.
- Thunder Bay
 - 95 unloads were reported at Thunder Bay yesterday. Week 1 unloads finished behind last week's pace by 700 unloads.
 - There are 600 cars on site at Thunder Bay with more than 300 cars arriving at the port in the prior 24 hours.
 - There are 11 cars enroute to Thunder Bay from Winnipeg and east.

Daily Loads on Wheels - 8/11/2019

	E Canada	Prince Rupert	Thunder Bay	USA/MEX	Vancouver	Total
CN	606	278	257	74	2,244	3,459
CP	137		1,038	46	2,101	3,322
Short Line	6				7	13
US Rail				59		59
	749	278	1,295	179	4,352	6,853

Change in Loads on Wheels - Prior 24 Hours

	E Canada	Prince Rupert	Thunder Bay	USA/MEX	Vancouver	Total
CN	-3	0	0	-1	173	169
CP	-31		2	0	-489	-518
Short Line	0				0	0
US Rail				1		1
	-34	0	2	0	-316	-348



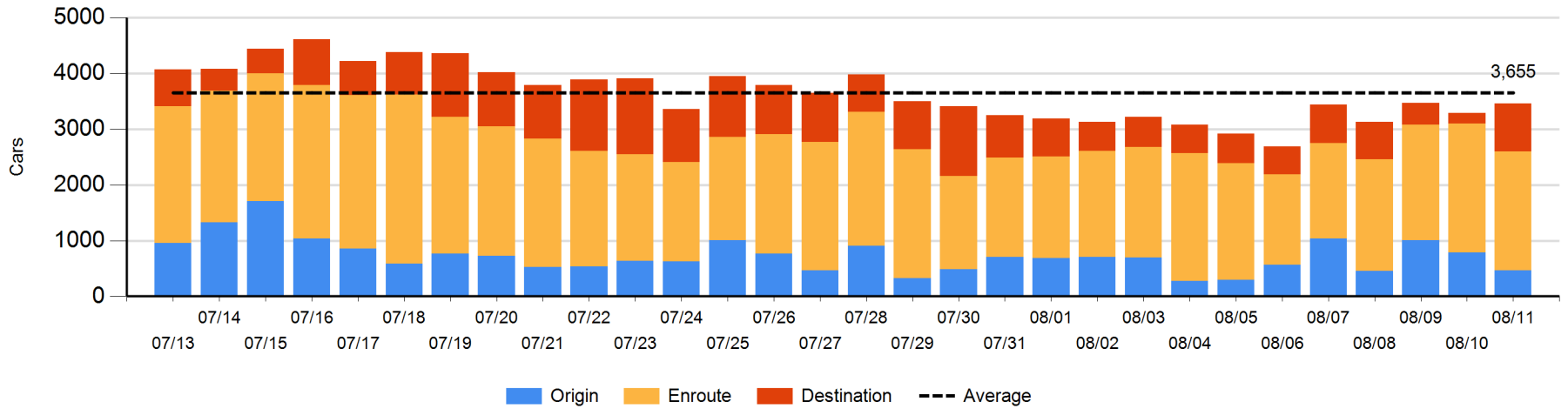
Daily Loads on Wheels By Pipeline Location - 8/11/2019

	E Canada	Prince Rupert	Thunder Bay	USA/MEX	Vancouver	Total
CN						
Origin				6	458	464
Enroute	413	66	105	53	1,496	2,133
Destination	193	212	152	15	290	862
	606	278	257	74	2,244	3,459
CP						
Origin			330	2	432	764
Enroute	91		270	2	1,010	1,373
Destination	46		438	42	659	1,185
	137		1,038	46	2,101	3,322
US Rail / Short Line						
Origin						
Enroute				30		30
Destination	6			29	7	42
	6			59	7	72

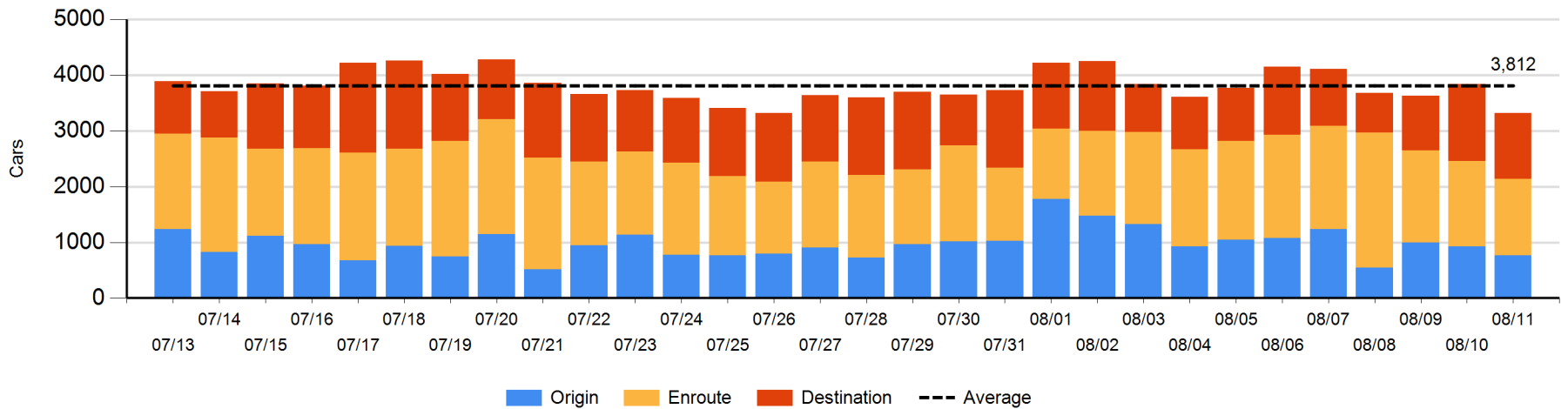
Change in Daily Loads on Wheels By Pipeline Location - Prior 24 Hours

	E Canada	Prince Rupert	Thunder Bay	USA/MEX	Vancouver	Total
CN						
Origin	-23	-13	-102	-4	-178	-320
Enroute	-102	-194	-48	-4	167	-181
Destination	122	207	150	7	185	671
	-3	0	0	-1	174	170
CP						
Origin	-36		107	0	-237	-166
Enroute	-9		-166	0	15	-160
Destination	14		61	0	-267	-192
	-31		2	0	-489	-518
US Rail / Short Line						
Origin						
Enroute				1		1
Destination	0			0	0	0
	0			1	0	1

CN Loads on Wheels by Pipeline Location - 8/11/2019



CP Loads on Wheels by Pipeline Location - 8/11/2019

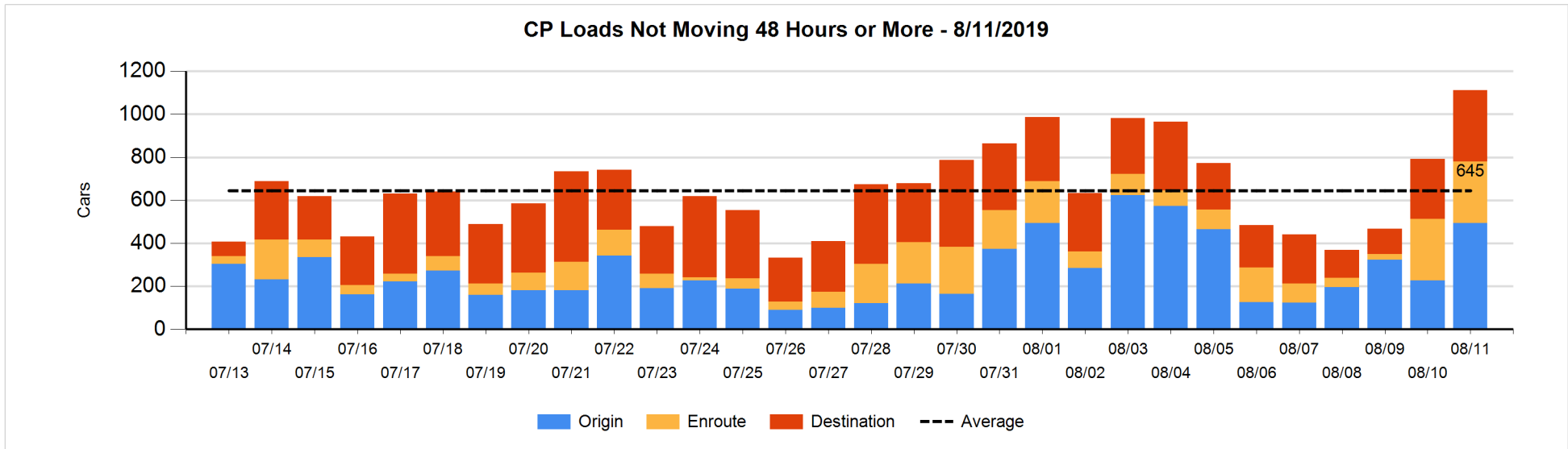
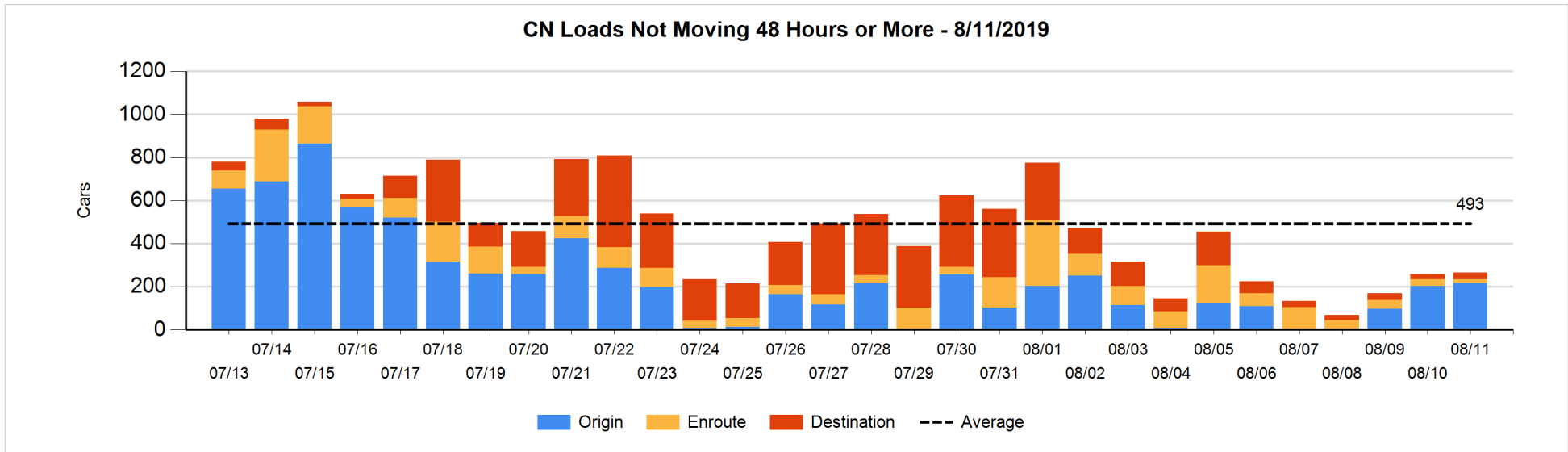


Loads Not Moving 48 Hours or More - 8/11/2019

	E Canada	Prince Rupert	Thunder Bay	USA/MEX	Vancouver	Total
CN						
Origin				3	214	217
Enroute	3	3		3	9	18
Destination	21	2	2	5	1	31
	24	5	2	11	224	266
CP						
Origin			219	2	273	494
Enroute			155	1	131	287
Destination			29	42	260	331
			403	45	664	1112
US Rail / Short Line						
Origin						
Enroute				15		15
Destination	6			24	6	36
	6			39	6	51

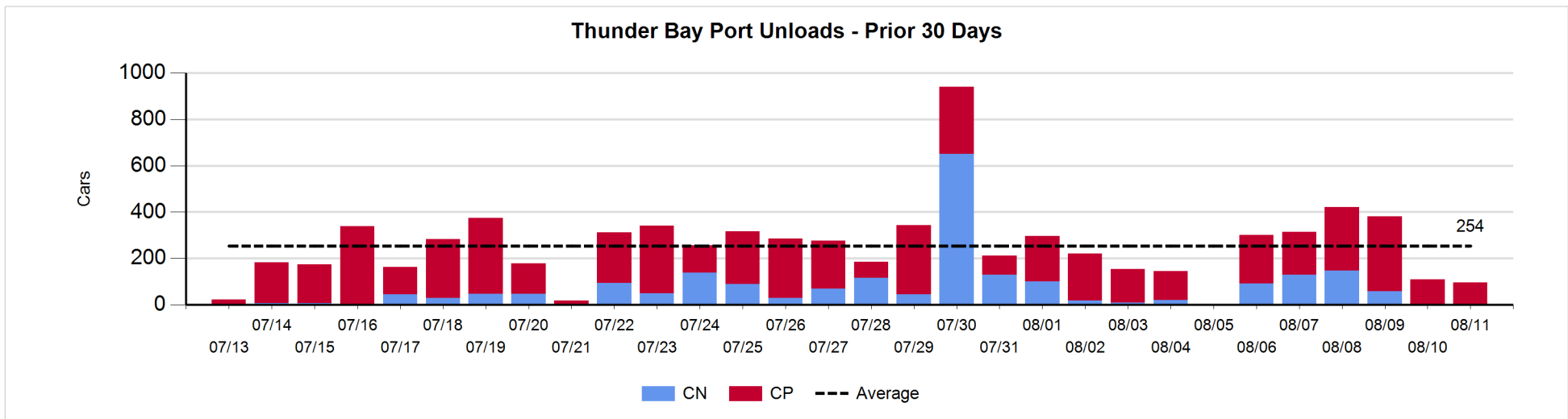
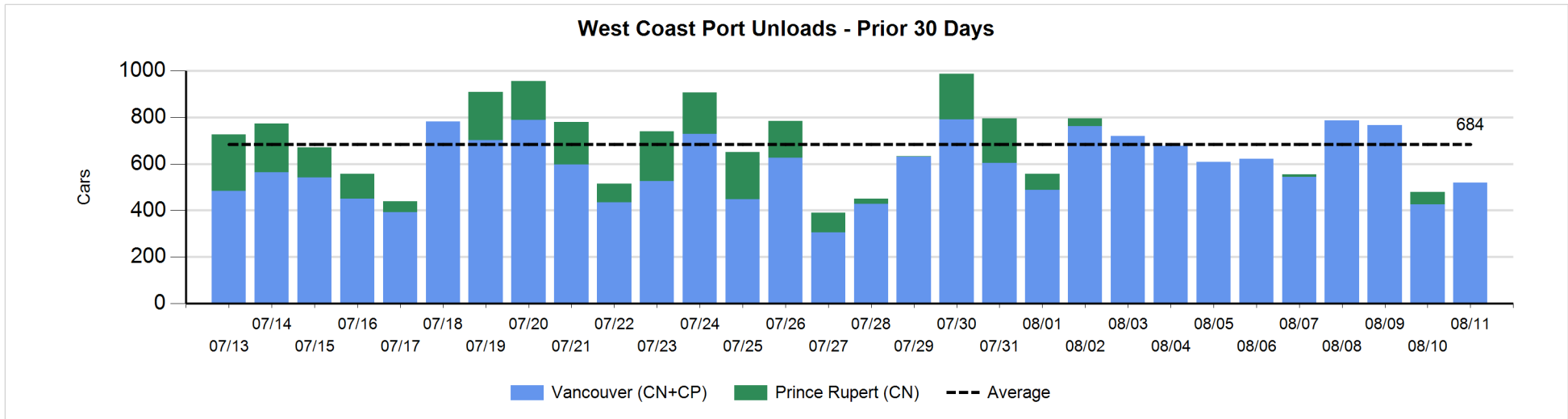
Change in Loads Not Moving 48 Hours or More - 8/11/2019

	E Canada	Prince Rupert	Thunder Bay	USA/MEX	Vancouver	Total
CN						
Origin	-1			-1	17	15
Enroute	-7	-11		2	1	-15
Destination	8	0	0	3	-4	7
	0	-11	0	4	14	7
CP						
Origin	-6		105	0	167	266
Enroute			1	0	2	3
Destination			-47	24	75	52
	-6		59	24	244	321
US Rail / Short Line						
Origin						
Enroute				0		0
Destination	1			5	1	7
	1			5	1	7



Port Unloads - 8/11/2019

	Prince Rupert	Vancouver	West Coast Total	Thunder Bay	Total
CN		89	89		89
CP		430	430	95	525
		519	519	95	614



Port Terminal Status

Vancouver

Daily Activity for 8/11/2019

	Cars Arrived	Cars Received in Interchange	Cars Delivered in Interchange	Cars Placed for Unloading	Loads on Wheels at Destination As of 8/11/2019
CN	13	123	156	36	290
CP	423	156	125	430	659
SRY		2			7

Port Unloads

	08/11	08/10	Week To Date	Last Week
CN	89	185	1,682	1,644
CP	430	241	2,590	3,026
SRY			64	59

Age Profile of Loaded Cars Waiting Placement for Unloading

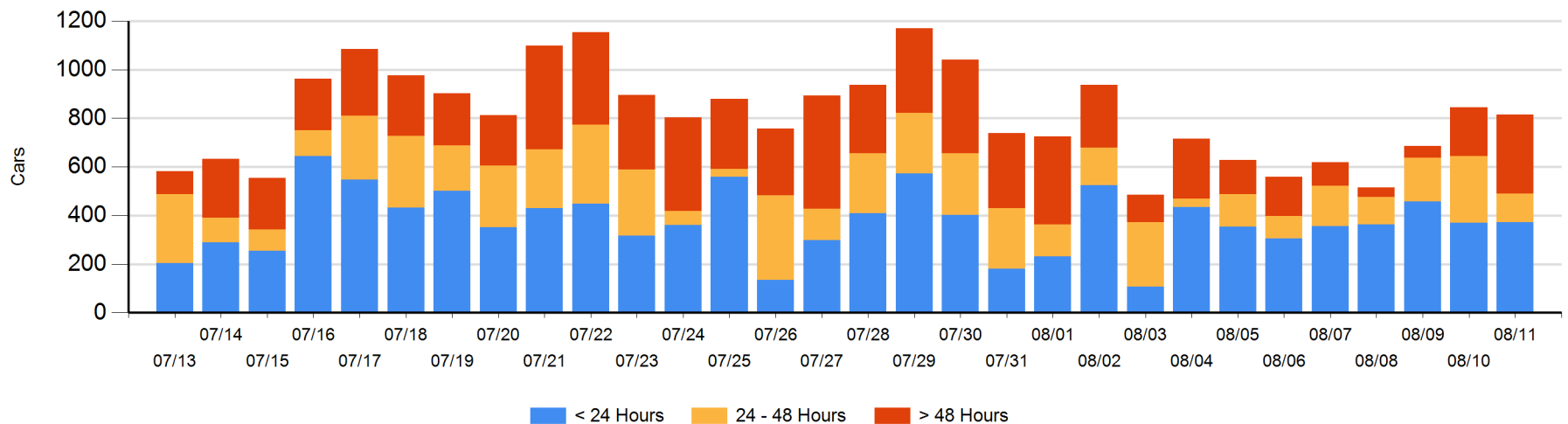
Today

	< 24 Hrs	24 - 48 Hrs	> 48-72 Hrs	> 72 Hrs	Total On Hand
CN	13	23	50	37	123
CP	359	94	161	77	691
SRY					0

Change in Last 24 Hours

	< 24 Hrs	24-48 Hrs	48 - 72 Hrs	> 72 Hrs
CN	-19	-74	25	25
CP	21	-84	15	60
SRY				

Loaded Cars on Hand Vancouver Waiting for Placement - Last 30 Days All Railways



Port Terminal Status

Prince Rupert

Daily Activity for 8/11/2019

	Cars Arrived	Cars Received in Interchange	Cars Delivered in Interchange	Cars Placed for Unloading	Loads on Wheels at Destination As of 8/11/2019
CN	207			207	212

Port Unloads

	08/11	08/10	Week To Date	Last Week
CN		54	65	496

Age Profile of Loaded Cars Waiting Placement for Unloading

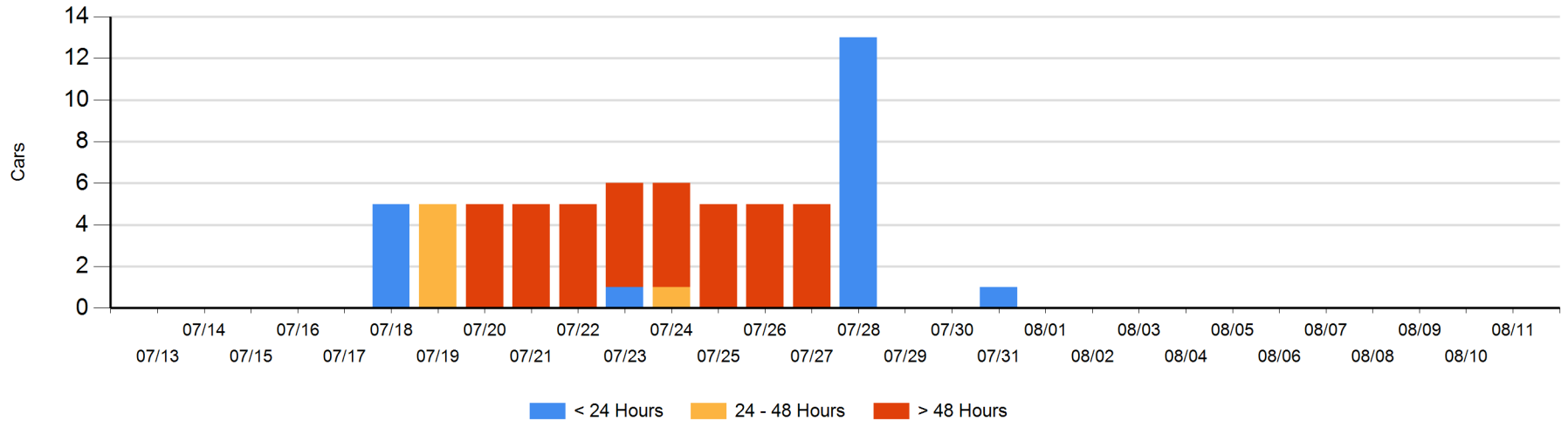
Today

	< 24 Hrs	24 - 48 Hrs	> 48-72 Hrs	> 72 Hrs	Total On Hand
CN					0

Change in Last 24 Hours

	< 24 Hrs	24-48 Hrs	48 - 72 Hrs	> 72 Hrs
CN				

Loaded Cars on Hand Prince Rupert Waiting for Placement - Last 30 Days All Railways



Port Terminal Status

Thunder Bay

Daily Activity for 8/11/2019

	Cars Arrived	Cars Received in Interchange	Cars Delivered in Interchange	Cars Placed for Unloading	Loads on Wheels at Destination As of 8/11/2019
CN	150				152
CP	169			183	438

Port Unloads

	08/11	08/10	Week To Date	Last Week
CN			426	972
CP	95	110	1,196	1,340

Age Profile of Loaded Cars Waiting Placement for Unloading

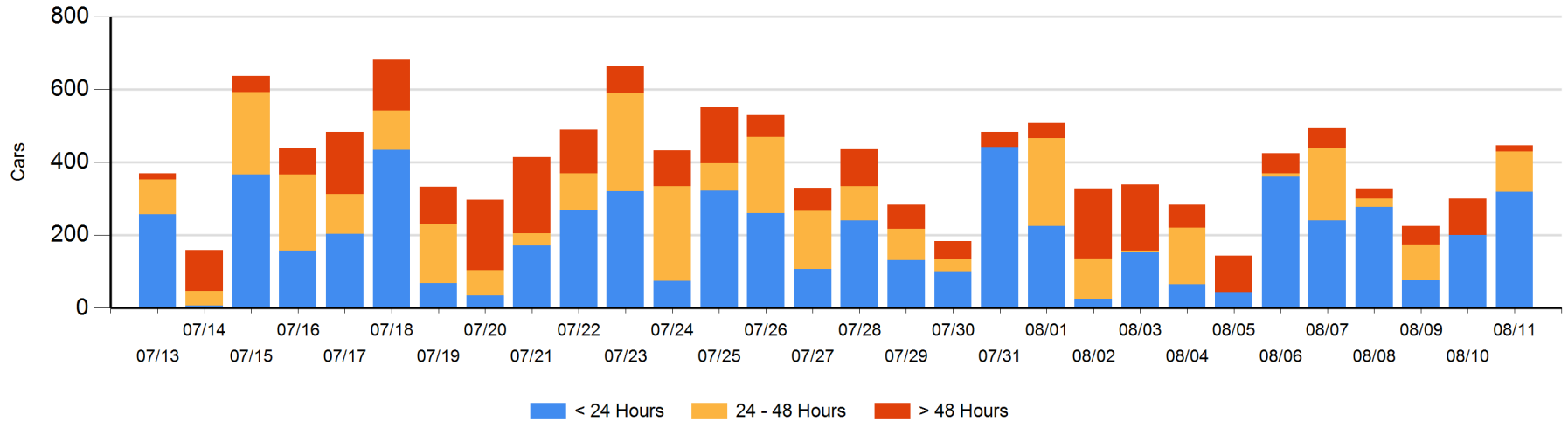
Today

	< 24 Hrs	24 - 48 Hrs	> 48-72 Hrs	> 72 Hrs	Total On Hand
CN	150				150
CP	169	111		16	296

Change in Last 24 Hours

	< 24 Hrs	24-48 Hrs	48 - 72 Hrs	> 72 Hrs
CN	150			
CP	-32	111	-71	-12

Loaded Cars on Hand Thunder Bay Waiting for Placement - Last 30 Days All Railways



Measurement Definitions

Loads on Wheels	<p>Count of loaded rail cars including all rail cars that have been released loaded at origin and have not been reported by the railway as unloaded at destination.</p> <p>Counts include all rail cars (hopper cars and boxcars) moving within a pipeline.</p>
Loads Not Moving	<p>Loaded rail cars for which the railways have not reported a movement event for 48 hours or more whether the rail car is at origin, enroute or at destination.</p>
Port Unloads	<p>Count of rail cars reported by railways as unloaded at the western port destinations of Vancouver, Prince Rupert and Thunder Bay.</p> <p>Unload counts include all rail cars (hopper cars and boxcars) unloaded by all receivers including major port terminals, transloaders and other receivers.</p>
Cars Arrived	<p>Count of rail cars reported as arrived at the destination railway terminal.</p>
Cars Received in Interchange	<p>Count of rail cars received in interchange by each railway within a destination railway terminal. Interchange activity is tracked for the Vancouver and Thunder Bay pipelines as applicable.</p>
Cars Delivered in Interchange	<p>Count of rail cars delivered in interchange by each railway within a destination railway terminal. Interchange activity is tracked for the Vancouver and Thunder Bay pipelines as applicable.</p>
Cars Placed for Unloading	<p>Count of rail cars reported by the railways as placed loaded at the receiver's facility for unloading.</p>
Loads on Wheels at Destination	<p>Count of rail cars that remain under load within the destination railway terminal including rail cars that have been reported as placed for unloading but not yet reported as unloaded.</p>
Waiting Placement for Unloading	<p>Count of rail cars that have been reported as arrived at the destination railway terminal but not reported as placed for unloading by the railway.</p> <p>For the Ports of Vancouver, Prince Rupert and Thunder Bay the count of rail cars waiting placement for unloading is categorized by age – i.e. the elapsed time from arrival at destination to the current report date.</p>