

SPEED READ

- Loads on wheels increased marginally overnight, reflecting a rise in both CN and CP volumes. On a net basis, volumes gained due to higher traffic in the Thunder Bay and Prince Rupert corridors offset by lower volumes in the E. Canada, Vancouver and USA/MEX corridors.
- Network fluidity improved overnight, led by a decline in idle car counts on CP by 34% (-236) offset by an increase in idle car counts on CN by 307% (+178). The total count of cars for 4+ days on both railways rose 15% (+44) overnight - presently at 334 cars.
- Two days in Week 2 unloads are at par with the prior week's performance, reflecting lower unloads at Vancouver, Prince Rupert offset by improved week over week performance at Thunder Bay and Prince Rupert.

Loads on Wheels

- Loads on wheels increased marginally by 1% (+66) overnight, due to higher traffic on both CN and CP - combined total at 7,273 and 3% below the trailing 30-day average.
- On a net basis, the rise in loads on wheels reflects higher traffic in the Thunder Bay and Prince Rupert corridors offset by lower volumes in the E. Canada, Vancouver and USA/MEX corridors.
- CN volumes increased 3% (+86) overnight, with higher traffic in the Prince Rupert and Thunder Bay corridors offset by reduced volumes in the E. Canada, Vancouver and USA/MEX corridors. System wide CN loads on wheels presently at 3,268 and 9% below the trailing 30-day average.
- CP volumes increased marginally by (+04) overnight, driven by a rise in volumes in the Thunder Bay corridor offset by a decline in traffic in the Vancouver, E. Canada and E. Canada corridors. CP system wide loads on wheels presently at 3,945 and 3% above the trailing 30-day average.
- Vancouver presently at 4,853, declined 2% (-119) overnight, now 6% above the trailing 30-day average.
- The Prince Rupert pipeline presently at 444, increased significantly by 55% (+158) overnight, and 28% below the trailing 30-day average.
- Thunder Bay volumes increased significantly by 18% (+208) overnight - presently at 1,354 and 8% below the trailing 30-day average, with 74% of traffic moving on CP.

Hopper Car Rationing

- No hopper cars were rationed by either CN or CP in week 53.

Loads Not Moving

- **The count of cars not moving for 48+ hours decreased 8% (-58) overnight, reflecting reduced counts on CP offset by higher counts on CN. Idle car counts presently at 695 and 36% below the trailing 30-day average.**
- CN
 - **The count of idle cars for 48+ hours increased significantly by 307% (+178) overnight - presently at 236 cars.**
 - The number of cars idle for 4+ days gained 5% (+1) overnight - presently at 20 cars.
 - The count of cars not moving for 7+ days increased 9% (+1) overnight - presently at 12 cars.
 - Vancouver represents 2% of all idle cars.
 - In total 0% of all idle cars are dwelling at origin locations.
- CP
 - **CP idle car counts for 48+ hours decreased 34% (-236) overnight - presently at 459 cars.**
 - The number of cars idle for 4+ days increased 16% (+43) overnight - presently at 314 cars.

- The number of cars idle for 7+ days increased 36% (+13) overnight - presently at 49 cars.
- Vancouver accounts for 83% of all idle cars.
- In total 18% of all idle cars are dwelling at origin locations.

Port Performance

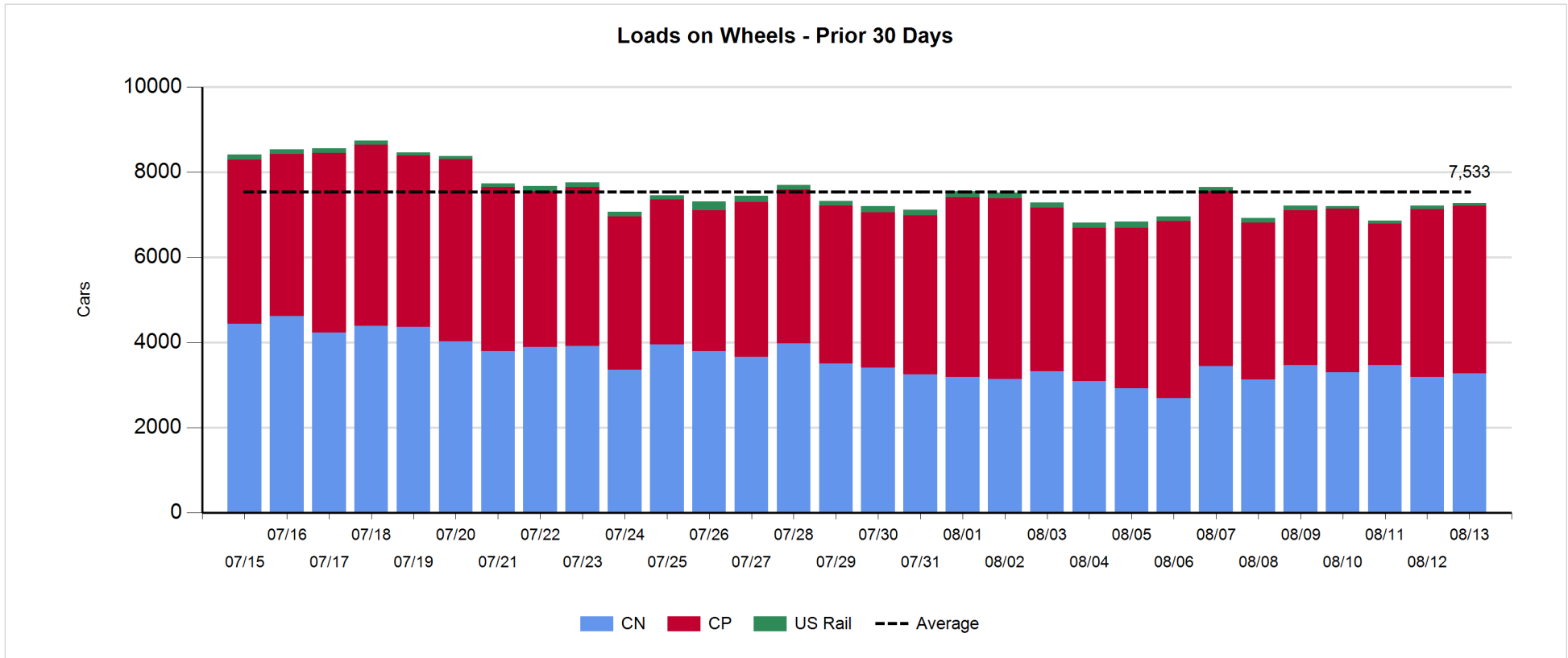
- CN and CP reported a total of 760 cars unloaded at the three major ports, now 19% below the trailing 30-day average. Two days in Week 2 unloads now behind last week's pace by 4 unloads, reflecting lower unloads at Vancouver, Prince Rupert offset by higher unloads at Thunder Bay and Prince Rupert.
- Vancouver
 - 525 unloads reported by CN and CP at the Port of Vancouver; CN - 130 and CP - 395. Two days in Week 2 unloads are tracking behind last week's performance by 200 unloads.
 - There are 1,050 cars on site at Vancouver with 600 cars arriving at the port in the last 24 hours.
 - CN and CP have more than 1,300 cars in British Columbia en route to Vancouver, with 550 cars at Kamloops and west, and 74% of traffic moving on CN.
- Prince Rupert
 - Prince Rupert reported zero unloads.
 - Loads on wheels now below 1,000 cars - presently at 444 cars.
 - There are 50 cars west of Jasper en route to Prince Rupert.
 - There are more than 200 cars on site at Prince Rupert with zero cars arriving at the port in the last 24 hours.
- Thunder Bay
 - 235 unloads were reported at Thunder Bay yesterday. Two days in Week 2 unloads are tracking ahead of last week's pace by nearly 200 unloads.
 - There are 400 cars on site at Thunder Bay with more than 250 cars arriving at the port in the prior 24 hours.
 - There are 300 cars enroute to Thunder from Winnipeg and east.

Daily Loads on Wheels - 8/13/2019

	E Canada	Prince Rupert	Thunder Bay	USA/MEX	Vancouver	Total
CN	401	444	346	69	2,008	3,268
CP	86		1,008	13	2,838	3,945
Short Line	6				7	13
US Rail				47		47
	493	444	1,354	129	4,853	7,273

Change in Loads on Wheels - Prior 24 Hours

	E Canada	Prince Rupert	Thunder Bay	USA/MEX	Vancouver	Total
CN	-116		89	-9	-36	86
CP	-20		119	-20	-75	4
Short Line	0				-8	-8
US Rail				-16		-16
	-136	158	208	-45	-119	66

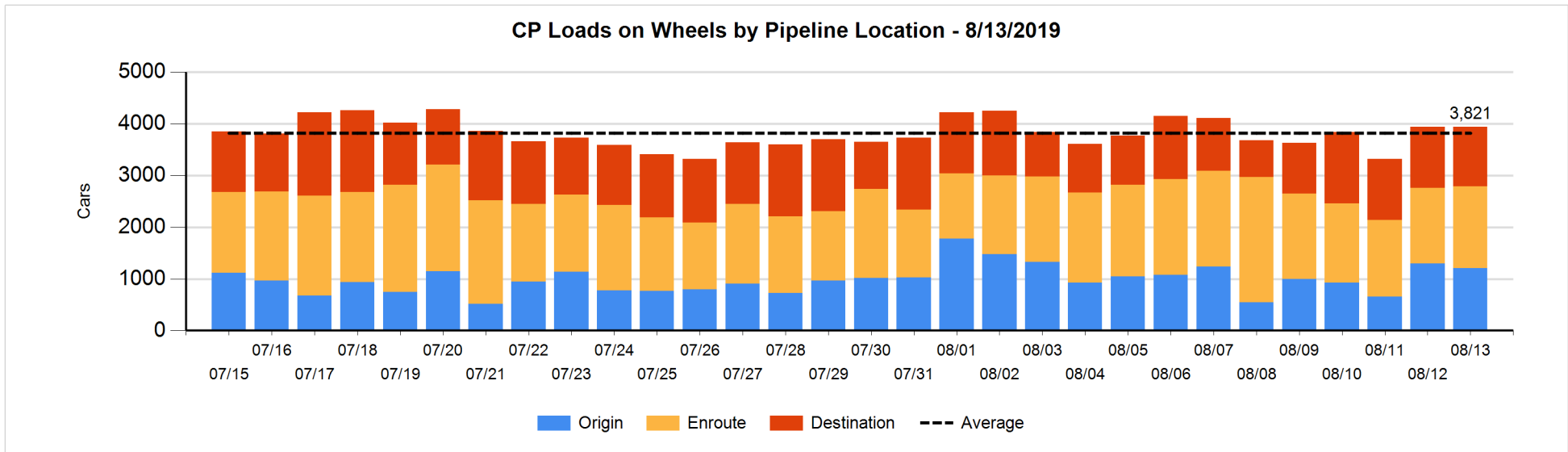
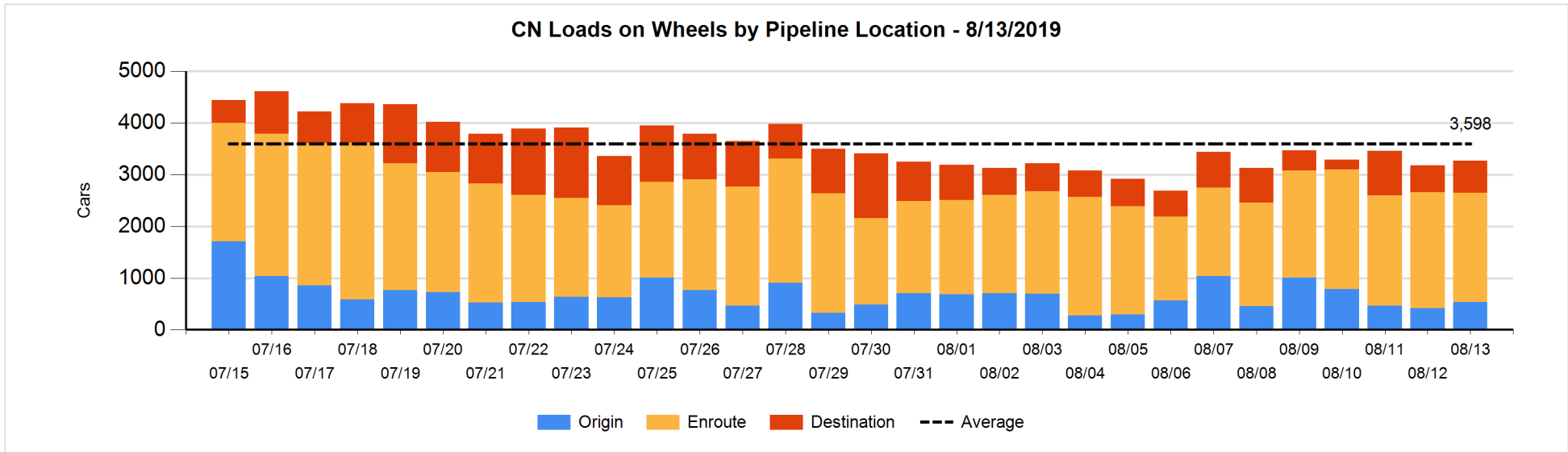


Daily Loads on Wheels By Pipeline Location - 8/13/2019

	E Canada	Prince Rupert	Thunder Bay	USA/MEX	Vancouver	Total
CN						
Origin	1	166	230		133	530
Enroute	337	56	102	56	1,568	2,119
Destination	63	222	14	13	307	619
	401	444	346	69	2,008	3,268
CP						
Origin			212	7	992	1,211
Enroute	60		406	3	1,110	1,579
Destination	26		390	3	736	1,155
	86		1,008	13	2,838	3,945
US Rail / Short Line						
Origin						
Enroute				28		28
Destination	6			19	7	32
	6			47	7	60

Change in Daily Loads on Wheels By Pipeline Location - Prior 24 Hours

	E Canada	Prince Rupert	Thunder Bay	USA/MEX	Vancouver	Total
CN						
Origin	-28	158	230	-8	-232	120
Enroute	-67	0	0	-6	-60	-133
Destination	-21	0	-141	5	256	99
	-116	158	89	-9	-36	86
CP						
Origin			11	3	-103	-89
Enroute	0		-78	-1	200	121
Destination	-20		186	-22	-172	-28
	-20		119	-20	-75	4
US Rail / Short Line						
Origin						
Enroute				-10		-10
Destination	0			-6	-8	-14
	0			-16	-8	-24

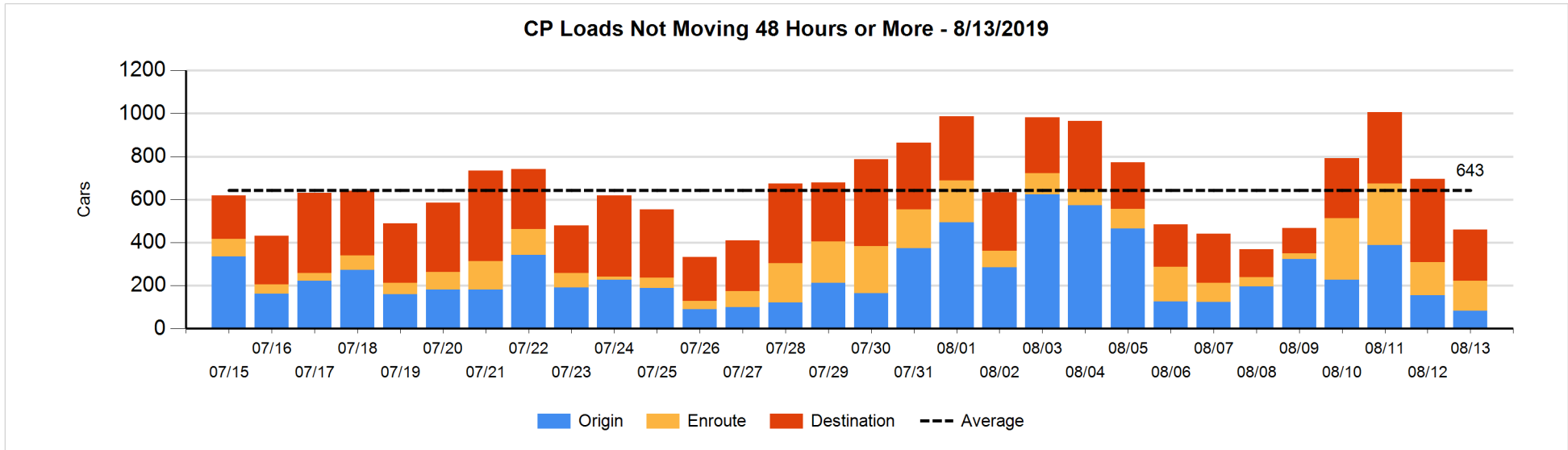
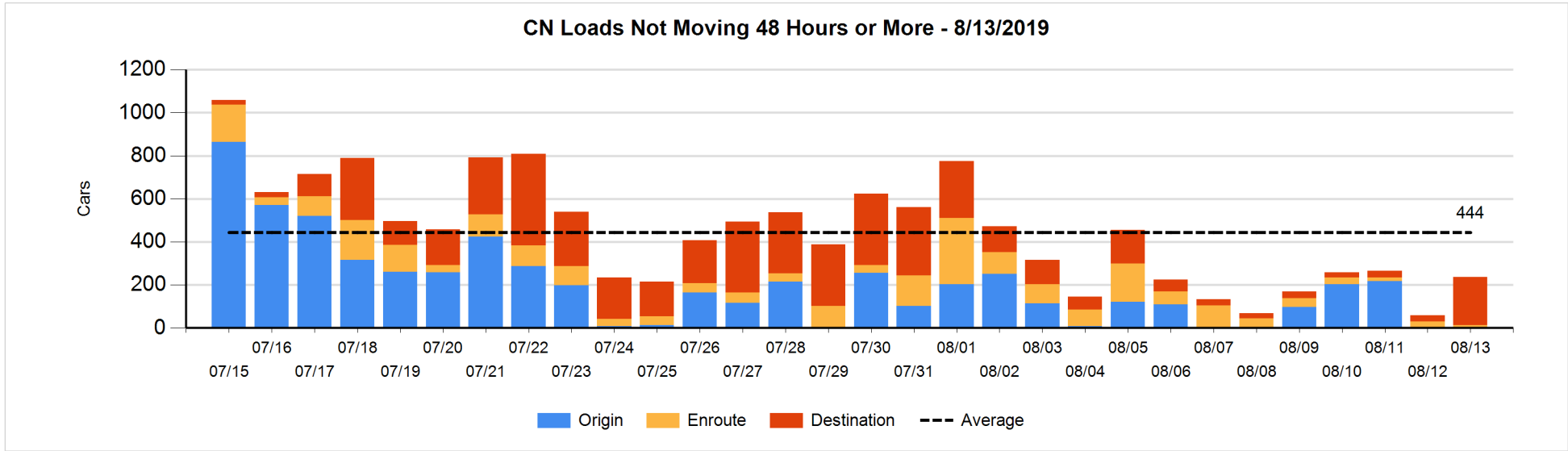


Loads Not Moving 48 Hours or More - 8/13/2019

	E Canada	Prince Rupert	Thunder Bay	USA/MEX	Vancouver	Total
CN						
Origin						
Enroute	4	3		1	4	12
Destination	6	212	2	3	1	224
	10	215	2	4	5	236
CP						
Origin					82	82
Enroute	2		5	1	133	141
Destination			68	3	165	236
	2		73	4	380	459
US Rail / Short Line						
Origin						
Enroute				12		12
Destination	5			16	4	25
	5			28	4	37

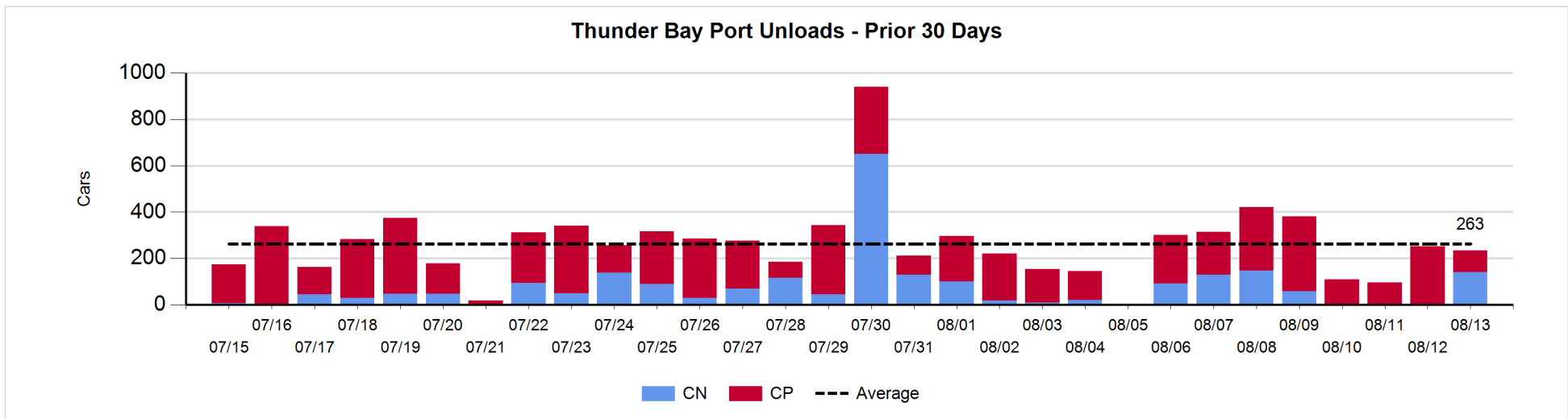
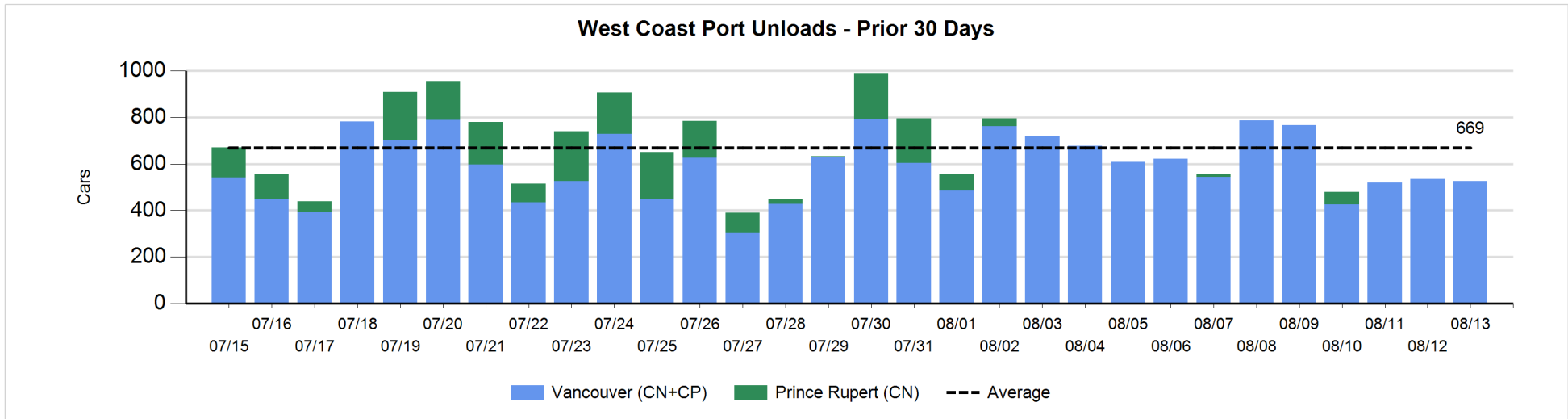
Change in Loads Not Moving 48 Hours or More - 8/13/2019

	E Canada	Prince Rupert	Thunder Bay	USA/MEX	Vancouver	Total
CN						
Origin				-3		-3
Enroute	-13	0		-1	0	-14
Destination	-8	207	0	-3	-1	195
	-21	207	0	-7	-1	178
CP						
Origin					-72	-72
Enroute	0		0	0	-13	-13
Destination			5	-10	-146	-151
	0		5	-10	-231	-236
US Rail / Short Line						
Origin						
Enroute				-2		-2
Destination	-1			-6	0	-7
	-1			-8	0	-9



Port Unloads - 8/13/2019

	Prince Rupert	Vancouver	West Coast Total	Thunder Bay	Total
CN		130	130	141	271
CP		395	395	94	489
		525	525	235	760



Port Terminal Status

Vancouver

Daily Activity for 8/13/2019

	Cars Arrived	Cars Received in Interchange	Cars Delivered in Interchange	Cars Placed for Unloading	Loads on Wheels at Destination As of 8/13/2019
CN	253	219	204	247	307
CP	357	204	221	407	736
SRY		2		10	7

Port Unloads

	08/13	08/12	Week To Date	Last Week
CN	130	198	328	1,682
CP	395	337	732	2,590
SRY	10	7	17	64

Age Profile of Loaded Cars Waiting Placement for Unloading

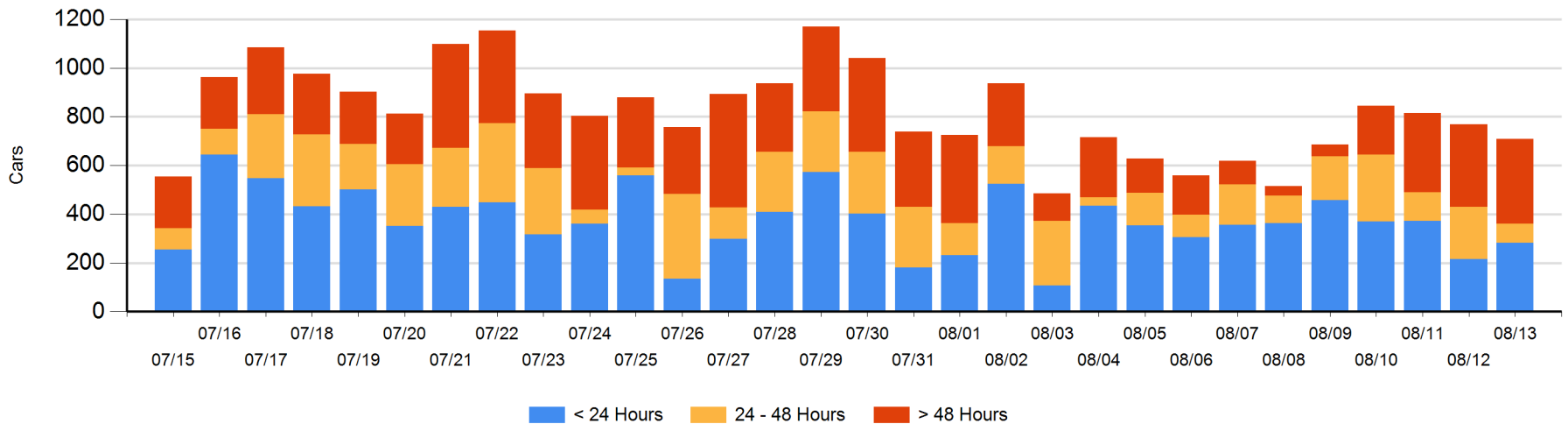
Today

	< 24 Hrs	24 - 48 Hrs	> 48-72 Hrs	> 72 Hrs	Total On Hand
CN	144	41	4	13	202
CP	138	38	118	212	506
SRY					0

Change in Last 24 Hours

	< 24 Hrs	24-48 Hrs	48 - 72 Hrs	> 72 Hrs
CN	40	28	-19	12
CP	26	-163	26	-10
SRY				

Loaded Cars on Hand Vancouver Waiting for Placement - Last 30 Days All Railways



Port Terminal Status

Prince Rupert

Daily Activity for 8/13/2019

Cars Arrived	Cars Received in Interchange	Cars Delivered in Interchange	Cars Placed for Unloading	Loads on Wheels at Destination As of 8/13/2019
CN				222

Port Unloads

	08/13	08/12	Week To Date	Last Week
CN				65

Age Profile of Loaded Cars Waiting Placement for Unloading

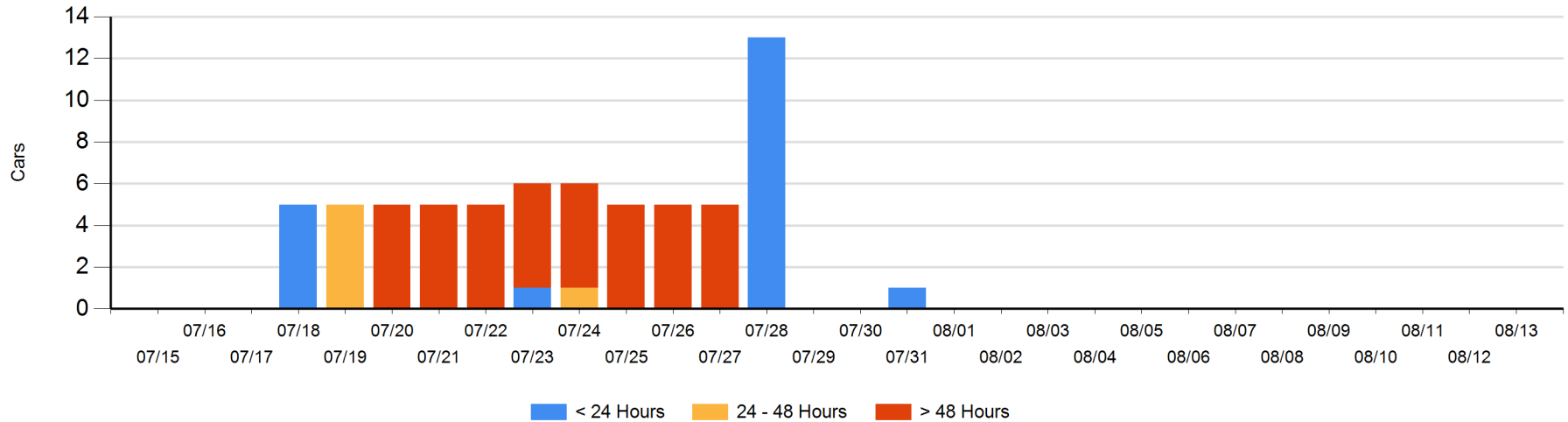
Today

< 24 Hrs	24 - 48 Hrs	> 48-72 Hrs	> 72 Hrs	Total On Hand
CN				0

Change in Last 24 Hours

< 24 Hrs	24-48 Hrs	48 - 72 Hrs	> 72 Hrs
CN			

Loaded Cars on Hand Prince Rupert Waiting for Placement - Last 30 Days All Railways



Port Terminal Status

Thunder Bay

Daily Activity for 8/13/2019

	Cars Arrived	Cars Received in Interchange	Cars Delivered in Interchange	Cars Placed for Unloading	Loads on Wheels at Destination As of 8/13/2019
CN				44	14
CP	279			72	390

Port Unloads

	08/13	08/12	Week To Date	Last Week
CN	141		141	426
CP	94	252	346	1,196

Age Profile of Loaded Cars Waiting Placement for Unloading

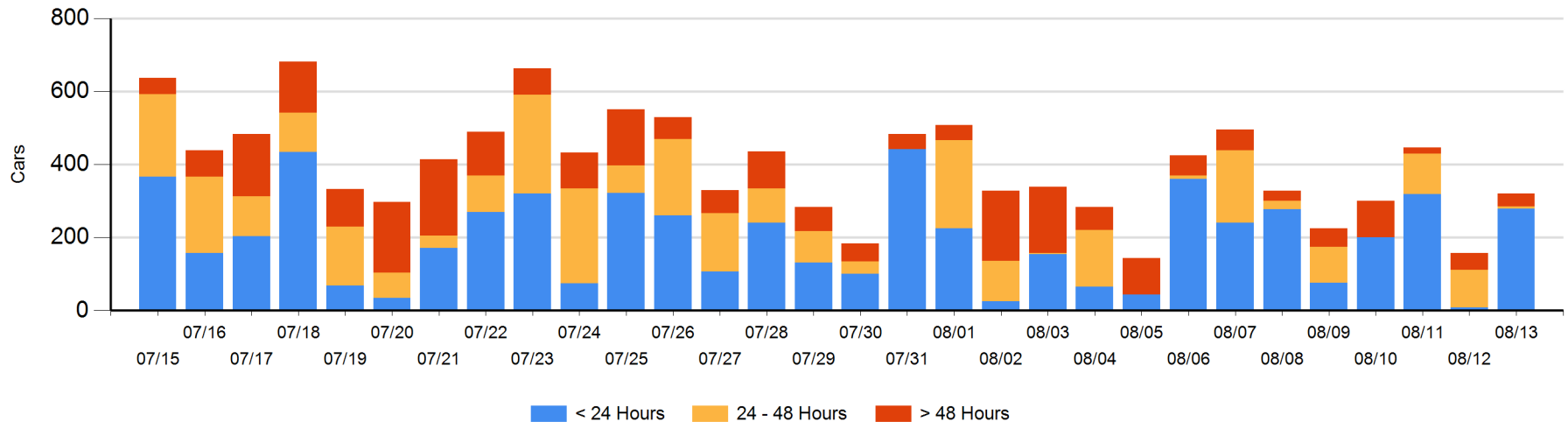
Today

	< 24 Hrs	24 - 48 Hrs	> 48-72 Hrs	> 72 Hrs	Total On Hand
CN		1			1
CP	279	5	33	2	319

Change in Last 24 Hours

	< 24 Hrs	24-48 Hrs	48 - 72 Hrs	> 72 Hrs
CN	-3	-41		
CP	274	-56	3	-14

Loaded Cars on Hand Thunder Bay Waiting for Placement - Last 30 Days All Railways



Measurement Definitions

Loads on Wheels	<p>Count of loaded rail cars including all rail cars that have been released loaded at origin and have not been reported by the railway as unloaded at destination.</p> <p>Counts include all rail cars (hopper cars and boxcars) moving within a pipeline.</p>
Loads Not Moving	<p>Loaded rail cars for which the railways have not reported a movement event for 48 hours or more whether the rail car is at origin, enroute or at destination.</p>
Port Unloads	<p>Count of rail cars reported by railways as unloaded at the western port destinations of Vancouver, Prince Rupert and Thunder Bay.</p> <p>Unload counts include all rail cars (hopper cars and boxcars) unloaded by all receivers including major port terminals, transloaders and other receivers.</p>
Cars Arrived	<p>Count of rail cars reported as arrived at the destination railway terminal.</p>
Cars Received in Interchange	<p>Count of rail cars received in interchange by each railway within a destination railway terminal. Interchange activity is tracked for the Vancouver and Thunder Bay pipelines as applicable.</p>
Cars Delivered in Interchange	<p>Count of rail cars delivered in interchange by each railway within a destination railway terminal. Interchange activity is tracked for the Vancouver and Thunder Bay pipelines as applicable.</p>
Cars Placed for Unloading	<p>Count of rail cars reported by the railways as placed loaded at the receiver's facility for unloading.</p>
Loads on Wheels at Destination	<p>Count of rail cars that remain under load within the destination railway terminal including rail cars that have been reported as placed for unloading but not yet reported as unloaded.</p>
Waiting Placement for Unloading	<p>Count of rail cars that have been reported as arrived at the destination railway terminal but not reported as placed for unloading by the railway.</p> <p>For the Ports of Vancouver, Prince Rupert and Thunder Bay the count of rail cars waiting placement for unloading is categorized by age – i.e. the elapsed time from arrival at destination to the current report date.</p>