

SPEED READ

- Loads on wheels fell overnight, marking a decline in CN volumes offset by higher CP volumes. On a net basis, volumes decreased due to lower volumes in the Vancouver, Thunder Bay and USA/MEX corridors offset by higher volumes in the Prince Rupert and E. Canada corridors.
- Network fluidity improved overnight, led by a decline in idle car counts on CP by 2% (-14) offset by an increase in idle car counts on CN by 2% (+5). The total count of cars for 4+ days on both railways increased 32% (+103) overnight - now at 421 cars.
- Four days in Week 2 unloads now behind prior week's performance by 250 unloads, marking lower unloads at Vancouver and Prince Rupert offset by improved week over week performance at Thunder Bay.

Loads on Wheels

- Loads on wheels fell 2% (-122) overnight, due to reduced volumes on CN offset by higher traffic on CP - combined total at 7,378 and 1% below the trailing 30-day average.
- On a net basis, the decline in loads on wheels reflects lower volumes in the Vancouver, Thunder Bay and USA/MEX corridors offset by higher volumes in the Prince Rupert and E. Canada corridors.
- CN volumes fell 4% (-131) overnight, with reduced volumes in the Vancouver and Thunder Bay corridors offset by higher volumes in the Prince Rupert, E. Canada and USA/MEX corridors. System wide CN loads on wheels presently at 3,105 and 11% below the trailing 30-day average.
- CP volumes increased slightly by 1% (+27) overnight and have now increased for the fourth consecutive day, driven by an increase in volumes in the Vancouver corridor offset by a decline in volumes in the Thunder Bay, E. Canada and USA/MEX corridors. CP system wide loads on wheels now at 4,206 and 9% above the trailing 30-day average.
- Vancouver presently at 5,146, decreased 5% (-293) overnight, now 11% above the trailing 30-day average.
- The Prince Rupert pipeline presently at 708, increased for the fourth consecutive day, up 44% (+218) overnight, and 24% above the trailing 30-day average.
- Thunder Bay volumes decreased significantly by 16% (-168) overnight - presently at 866, the lowest seen in the last 30 days, and 40% below the trailing 30-day average, with 62% of traffic moving on CP.

Hopper Car Rationing

- No hopper cars were rationed by either CN or CP in week 1.

Loads Not Moving

- **The count of cars not moving for 48+ hours decreased slightly by 1% (-09) overnight, marking lower counts on CP offset by higher counts on CN. Idle car counts now at 1,132 and 6% above the trailing 30-day average.**
- CN
 - **The count of idle cars for 48+ hours increased for the third consecutive day, up 2% (+5) overnight - now at 298 cars.**
 - The number of cars idle for 4+ days increased for the third consecutive day, up 693% (+194) overnight - now at 222 cars.
 - The count of cars not moving for 7+ days increased for the third consecutive day, up 14% (+2) overnight - presently at 16 cars.
 - Vancouver represents 17% of all idle cars.
 - In total 0% of all idle cars are dwelling at origin locations.
- CP
 - **CP idle car counts for 48+ hours fell 2% (-14) overnight - presently at 834 cars.**

- The number of cars idle for 4+ days fell 31% (-92) overnight - now at 199 cars.
- The number of cars idle for 7+ days increased significantly by 60% (+30) overnight and have now increased for the third consecutive day - now at 80 cars.
- Vancouver accounts for 85% of all idle cars.
- In total 54% of all idle cars are dwelling at origin locations.

Port Performance

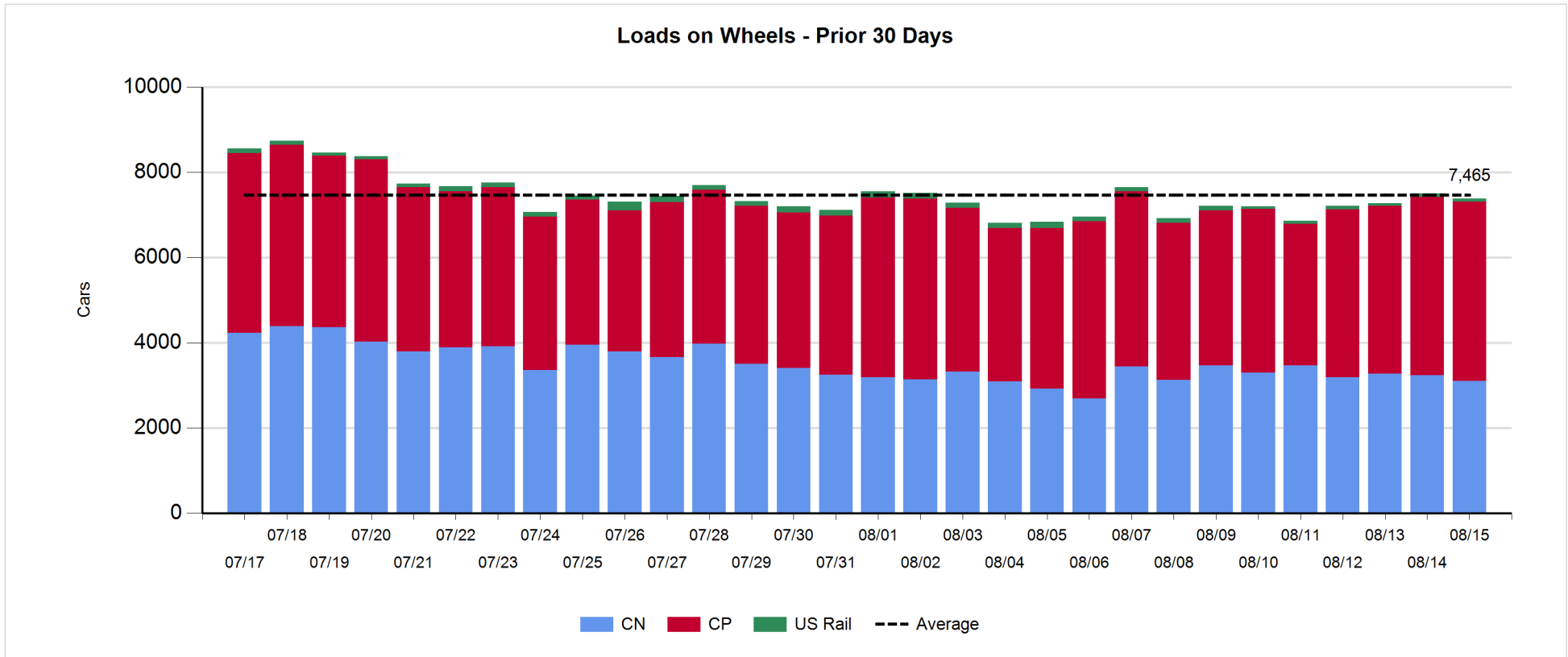
- CN and CP reported a total of 904 cars unloaded at the three major ports, now 4% below the trailing 30-day average. Four days in Week 2 unloads now behind last week's pace by 250 unloads, marking lower unloads at Vancouver and Prince Rupert offset by higher unloads at Thunder Bay.
- Vancouver
 - 641 unloads reported by CN and CP at the Port of Vancouver; CN - 217 and CP - 424. Four days in Week 2 unloads are tracking behind last week's performance by more than 250 unloads.
 - There are more than 1,400 cars on site at Vancouver with 750 cars arriving at the port in the last 24 hours.
 - CN and CP have 1,150 cars in British Columbia en route to Vancouver, with more than 350 cars at Kamloops and west, and 77% of traffic moving on CP.
- Prince Rupert
 - Prince Rupert reported zero unloads, now behind last week's unloads after four days by 11 unloads.
 - Loads on wheels now below 1,000 cars - now at 708 cars.
 - There are 26 cars west of Jasper en route to Prince Rupert.
 - There are 250 cars on site at Prince Rupert with zero cars arriving at the port in the last 24 hours.
- Thunder Bay
 - 263 unloads were reported at Thunder Bay yesterday. Four days in Week 2 unloads are tracking ahead of last week's pace by nearly 50 unloads.
 - There are more than 350 cars on site at Thunder Bay with 250 cars arriving at the port in the prior 24 hours.
 - There are 400 cars en route to Thunder Bay from Winnipeg and east.

Daily Loads on Wheels - 8/15/2019

	E Canada	Prince Rupert	Thunder Bay	USA/MEX	Vancouver	Total
CN	489	708	332	65	1,511	3,105
CP	35		534	8	3,629	4,206
Short Line	6				6	12
US Rail				55		55
	530	708	866	128	5,146	7,378

Change in Loads on Wheels - Prior 24 Hours

	E Canada	Prince Rupert	Thunder Bay	USA/MEX	Vancouver	Total
CN	143	218	-17	3	-478	-131
CP	-6		-151	-1	185	27
Short Line	0				0	0
US Rail				-18		-18
	137	218	-168	-16	-293	-122

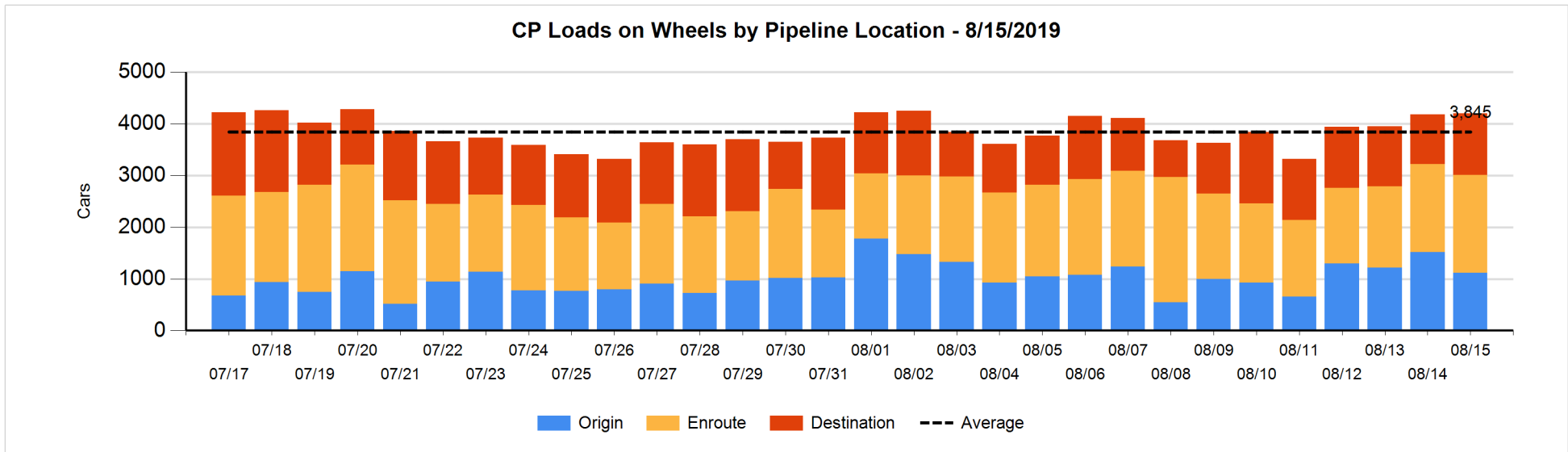
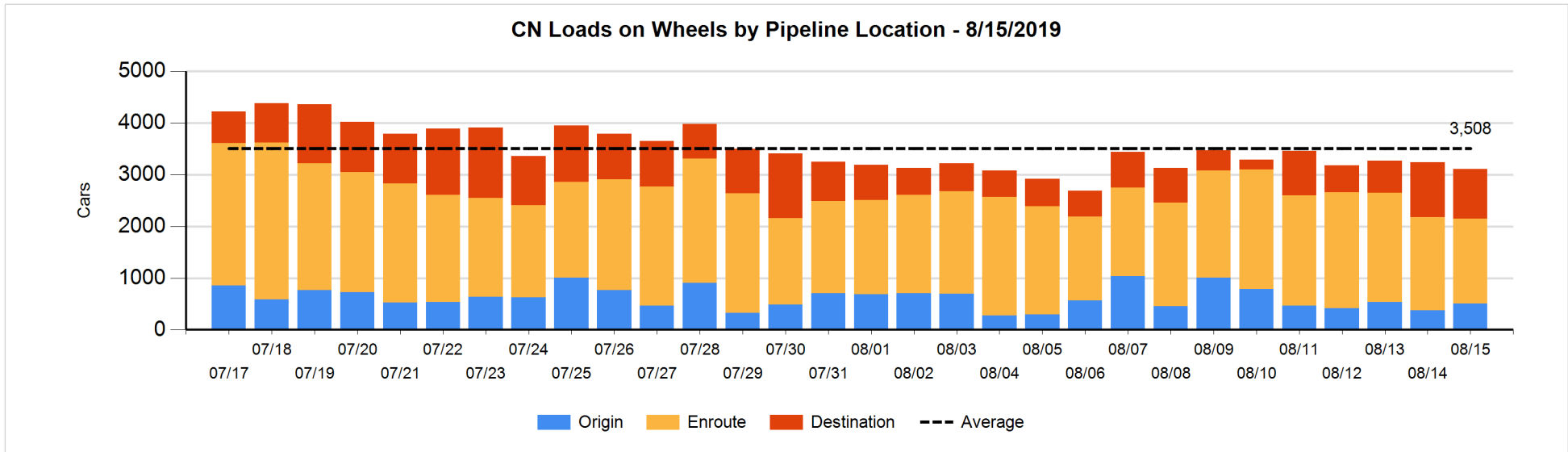


Daily Loads on Wheels By Pipeline Location - 8/15/2019

	E Canada	Prince Rupert	Thunder Bay	USA/MEX	Vancouver	Total
CN						
Origin	73	153		7	272	505
Enroute	318	311	194	46	778	1,647
Destination	98	244	138	12	461	953
	489	708	332	65	1,511	3,105
CP						
Origin	3		2		1,115	1,120
Enroute	22		307	8	1,552	1,889
Destination	10		225		962	1,197
	35		534	8	3,629	4,206
US Rail / Short Line						
Origin						
Enroute				41		41
Destination	6			14	6	26
	6			55	6	67

Change in Daily Loads on Wheels By Pipeline Location - Prior 24 Hours

	E Canada	Prince Rupert	Thunder Bay	USA/MEX	Vancouver	Total
CN						
Origin	70	116		7	-58	135
Enroute	22	102	-38	1	-245	-158
Destination	51	0	21	-5	-175	-108
	143	218	-17	3	-478	-131
CP						
Origin	3		-100	-2	-293	-392
Enroute	-8		-10	1	200	183
Destination	-1		-41		278	236
	-6		-151	-1	185	27
US Rail / Short Line						
Origin						
Enroute				-15		-15
Destination	0			-3	0	-3
	0			-18	0	-18

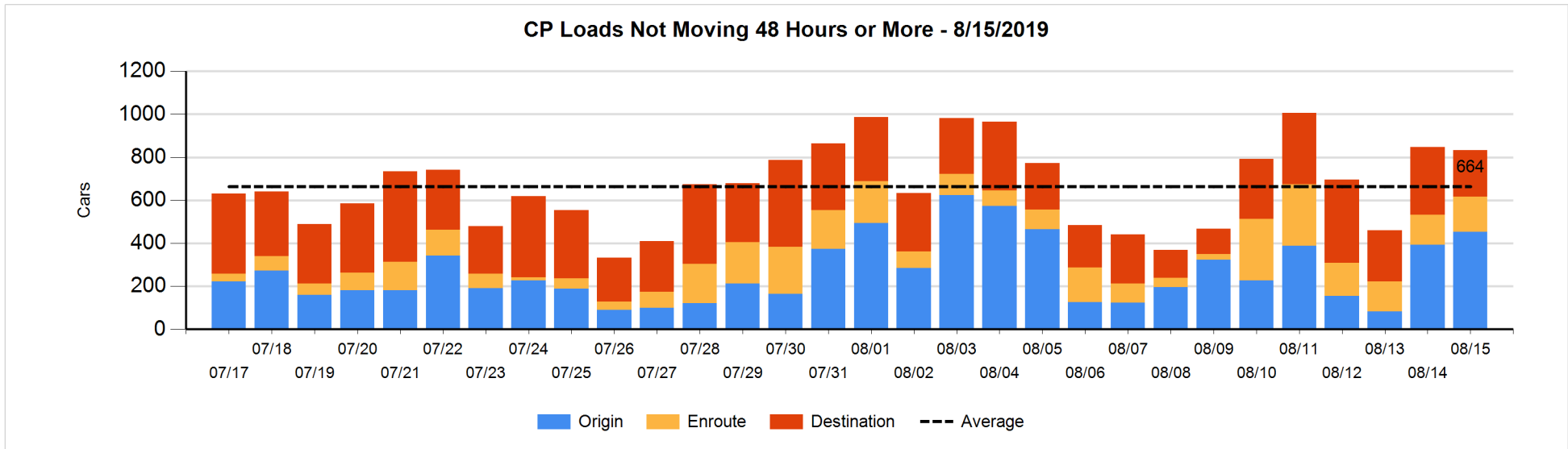
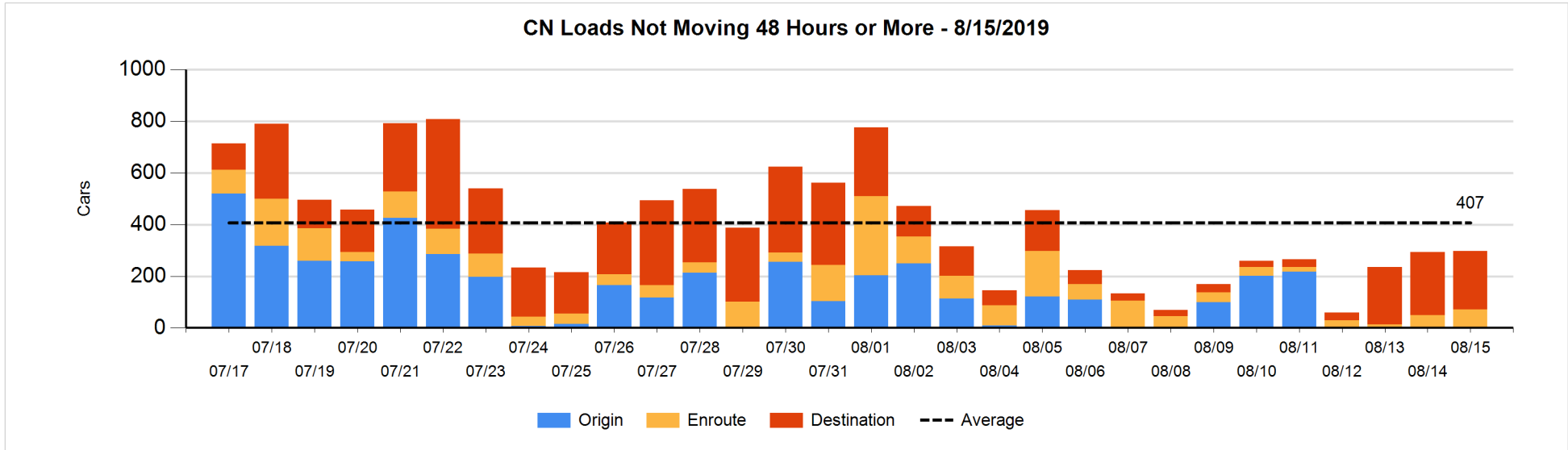


Loads Not Moving 48 Hours or More - 8/15/2019

	E Canada	Prince Rupert	Thunder Bay	USA/MEX	Vancouver	Total
CN						
Origin						
Enroute	5	13		5	47	70
Destination	5	211	3	6	3	228
	10	224	3	11	50	298
CP						
Origin			1		453	454
Enroute			94	1	67	162
Destination	8		24		186	218
	8		119	1	706	834
US Rail / Short Line						
Origin						
Enroute				12		12
Destination	5			14	5	24
	5			26	5	36

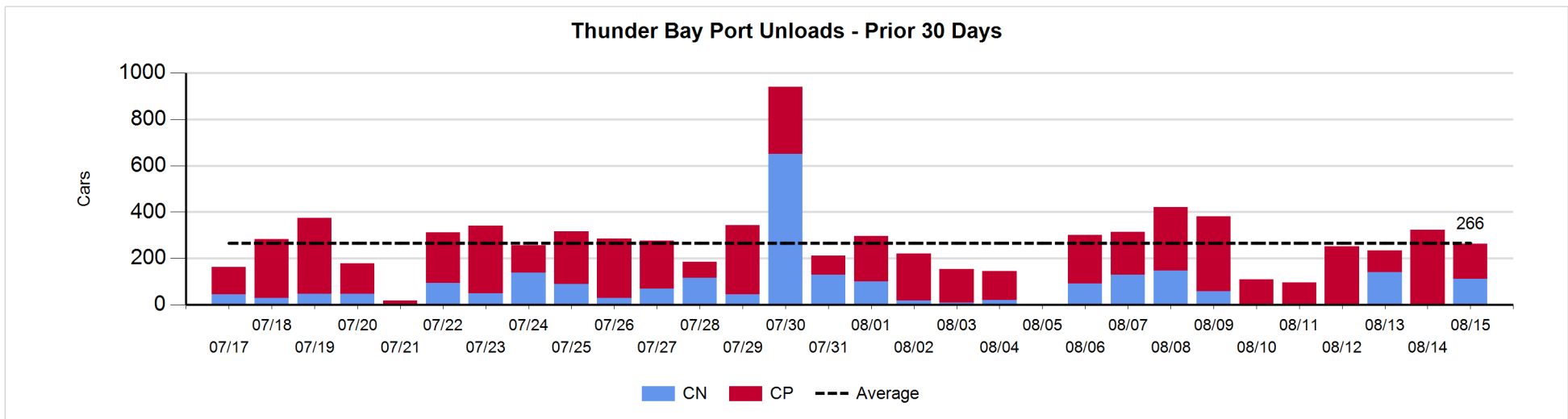
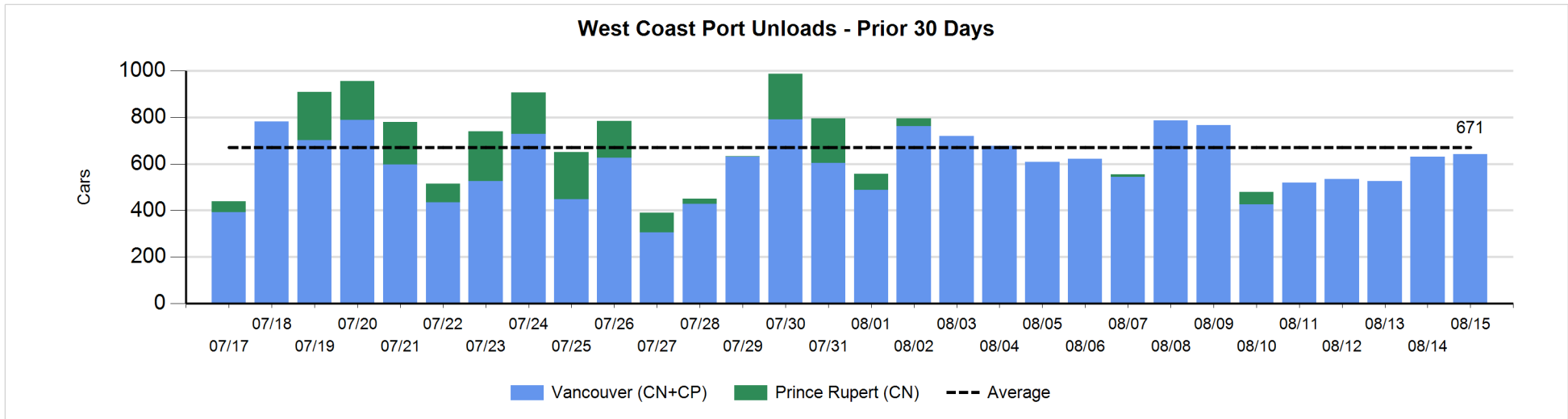
Change in Loads Not Moving 48 Hours or More - 8/15/2019

	E Canada	Prince Rupert	Thunder Bay	USA/MEX	Vancouver	Total
CN						
Origin	-1					-1
Enroute	-1	10		4	10	23
Destination	0	-11	-10	3	1	-17
	-2	-1	-10	7	11	5
CP						
Origin			1	-2	63	62
Enroute	-2		89	0	-66	21
Destination	8		20		-125	-97
	6		110	-2	-128	-14
US Rail / Short Line						
Origin						
Enroute				-1		-1
Destination	1			-2	0	-1
	1			-3	0	-2



Port Unloads - 8/15/2019

	Prince Rupert	Vancouver	West Coast Total	Thunder Bay	Total
CN		217	217	111	328
CP		424	424	152	576
		641	641	263	904



Port Terminal Status

Vancouver

Daily Activity for 8/15/2019

	Cars Arrived	Cars Received in Interchange	Cars Delivered in Interchange	Cars Placed for Unloading	Loads on Wheels at Destination As of 8/15/2019
CN	369	131	294	231	461
CP	376	294	134	420	962
SRY		3			6

Port Unloads

	08/15	08/14	Week To Date	Last Week
CN	217	353	898	1,682
CP	424	278	1,434	2,590
SRY		3	20	64

Age Profile of Loaded Cars Waiting Placement for Unloading

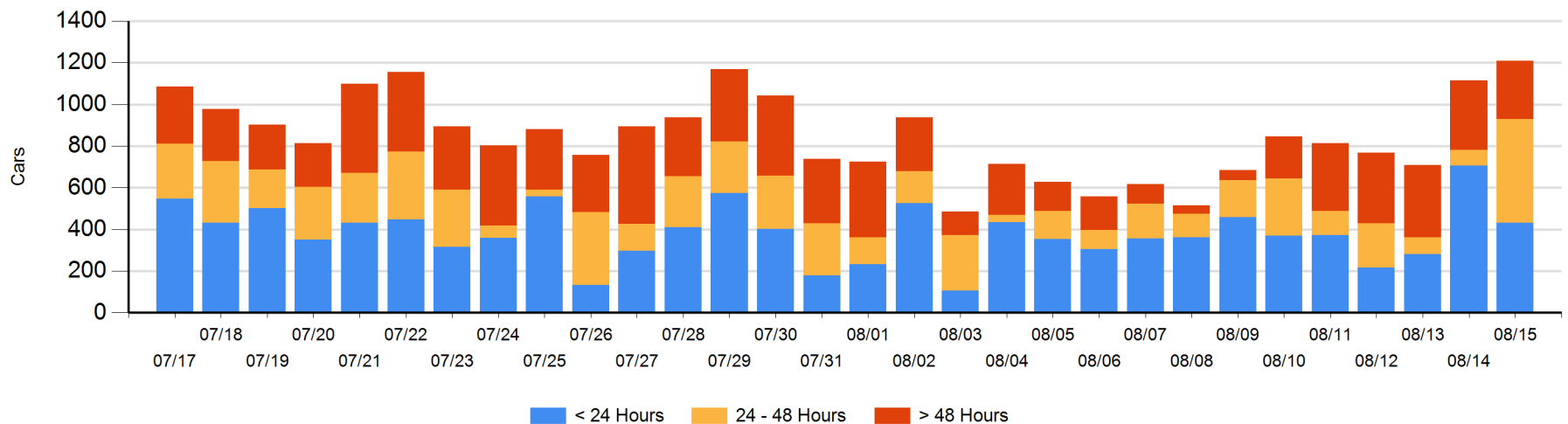
Today

	< 24 Hrs	24 - 48 Hrs	> 48-72 Hrs	> 72 Hrs	Total On Hand
CN	170	328	14	55	567
CP	261	171	23	186	641
SRY					0

Change in Last 24 Hours

	< 24 Hrs	24-48 Hrs	48 - 72 Hrs	> 72 Hrs
CN	-151	292	-27	41
CP	-124	132	-2	-67
SRY				

Loaded Cars on Hand Vancouver Waiting for Placement - Last 30 Days All Railways



Port Terminal Status

Prince Rupert

Daily Activity for 8/15/2019

Cars Arrived	Cars Received in Interchange	Cars Delivered in Interchange	Cars Placed for Unloading	Loads on Wheels at Destination As of 8/15/2019
			11	244

Port Unloads

	08/15	08/14	Week To Date	Last Week
CN				65

Age Profile of Loaded Cars Waiting Placement for Unloading

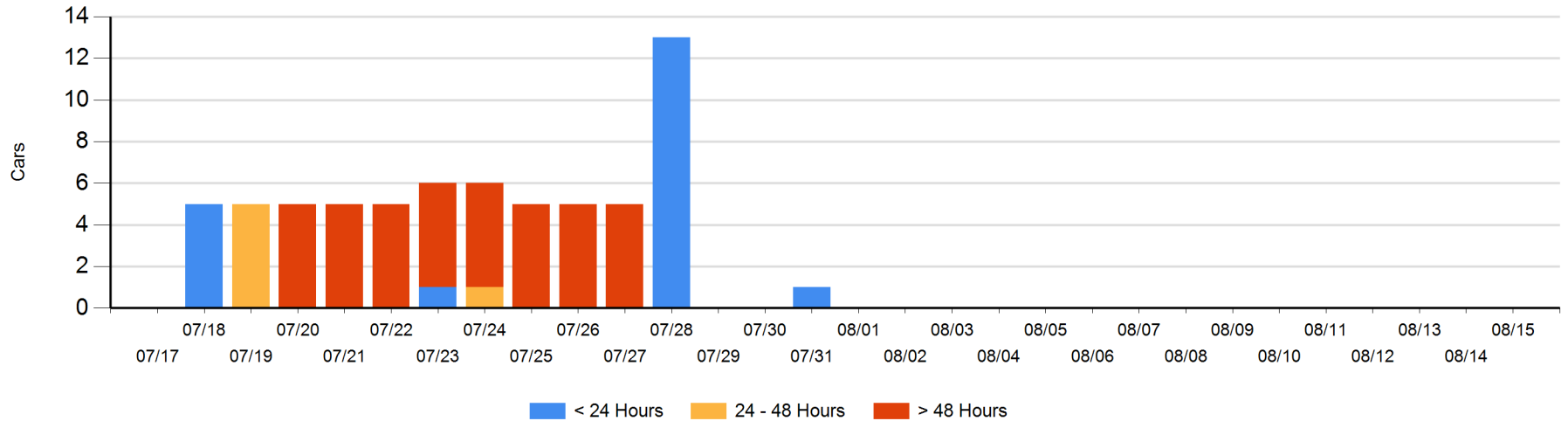
Today

< 24 Hrs	24 - 48 Hrs	> 48-72 Hrs	> 72 Hrs	Total On Hand
				0

Change in Last 24 Hours

< 24 Hrs	24-48 Hrs	48 - 72 Hrs	> 72 Hrs

Loaded Cars on Hand Prince Rupert Waiting for Placement - Last 30 Days All Railways



Port Terminal Status

Thunder Bay

Daily Activity for 8/15/2019

	Cars Arrived	Cars Received in Interchange	Cars Delivered in Interchange	Cars Placed for Unloading	Loads on Wheels at Destination As of 8/15/2019
CN	132			132	138
CP	111			124	225

Port Unloads

	08/15	08/14	Week To Date	Last Week
CN	111		252	426
CP	152	324	822	1,196

Age Profile of Loaded Cars Waiting Placement for Unloading

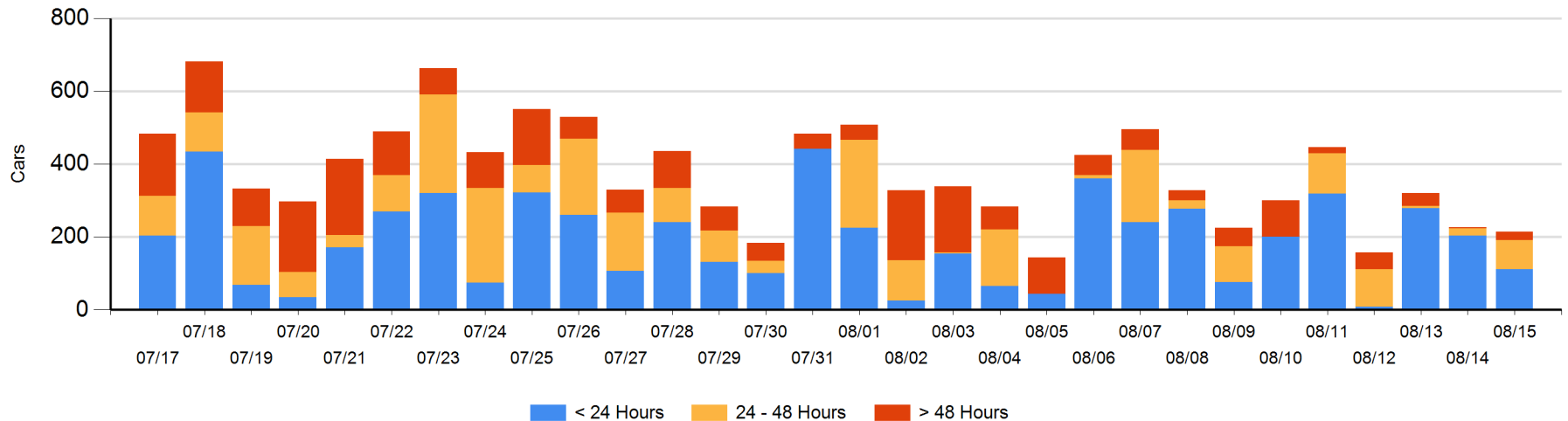
Today

	< 24 Hrs	24 - 48 Hrs	> 48-72 Hrs	> 72 Hrs	Total On Hand
CN		3		1	4
CP	111	77	21	1	210

Change in Last 24 Hours

	< 24 Hrs	24-48 Hrs	48 - 72 Hrs	> 72 Hrs
CN	-3	3	-1	1
CP	-89	56	19	1

Loaded Cars on Hand Thunder Bay Waiting for Placement - Last 30 Days All Railways



Measurement Definitions

Loads on Wheels	<p>Count of loaded rail cars including all rail cars that have been released loaded at origin and have not been reported by the railway as unloaded at destination.</p> <p>Counts include all rail cars (hopper cars and boxcars) moving within a pipeline.</p>
Loads Not Moving	<p>Loaded rail cars for which the railways have not reported a movement event for 48 hours or more whether the rail car is at origin, enroute or at destination.</p>
Port Unloads	<p>Count of rail cars reported by railways as unloaded at the western port destinations of Vancouver, Prince Rupert and Thunder Bay.</p> <p>Unload counts include all rail cars (hopper cars and boxcars) unloaded by all receivers including major port terminals, transloaders and other receivers.</p>
Cars Arrived	<p>Count of rail cars reported as arrived at the destination railway terminal.</p>
Cars Received in Interchange	<p>Count of rail cars received in interchange by each railway within a destination railway terminal. Interchange activity is tracked for the Vancouver and Thunder Bay pipelines as applicable.</p>
Cars Delivered in Interchange	<p>Count of rail cars delivered in interchange by each railway within a destination railway terminal. Interchange activity is tracked for the Vancouver and Thunder Bay pipelines as applicable.</p>
Cars Placed for Unloading	<p>Count of rail cars reported by the railways as placed loaded at the receiver's facility for unloading.</p>
Loads on Wheels at Destination	<p>Count of rail cars that remain under load within the destination railway terminal including rail cars that have been reported as placed for unloading but not yet reported as unloaded.</p>
Waiting Placement for Unloading	<p>Count of rail cars that have been reported as arrived at the destination railway terminal but not reported as placed for unloading by the railway.</p> <p>For the Ports of Vancouver, Prince Rupert and Thunder Bay the count of rail cars waiting placement for unloading is categorized by age – i.e. the elapsed time from arrival at destination to the current report date.</p>