

## SPEED READ

- Loads on wheels fell overnight, reflecting reduced CP traffic offset by an increase in CN volumes. On a net basis, volumes declined due to reduced traffic in the Thunder Bay and Vancouver corridors offset by higher traffic in the Prince Rupert, E. Canada and USA/MEX corridors.
- Network fluidity improved overnight, led by a decline in idle car counts on CN by 58% (-256) offset by a rise in idle car counts on CP by 21% (+83). The total count of cars for 4+ days on both railways fell 27% (-92) overnight - now at 247 cars.
- Three days in Week 5 unloads now behind prior week's performance by 100 unloads, marking reduced unloads at Vancouver and Thunder Bay offset by improved week over week performance at Prince Rupert.

=====

## Loads on Wheels

- Loads on wheels fell 3% (-210) overnight, due to reduced traffic on CP offset by higher traffic on CN - combined total at 6,194, the lowest seen in the last 30 days, and 11% below the trailing 30-day average.
- On a net basis, the decline in loads on wheels indicates reduced traffic in the Thunder Bay and Vancouver corridors offset by higher traffic in the Prince Rupert, E. Canada and USA/MEX corridors.
- CN volumes increased 5% (+132) overnight, with higher traffic across all corridors other than Thunder Bay. System wide CN loads on wheels now at 3,027 and 8% below the trailing 30-day average.
- CP volumes declined 9% (-317) overnight, driven by a nominal decline in traffic across all corridors. CP system wide loads on wheels presently at 3,052 and 15% below the trailing 30-day average.
- Vancouver now at 3,304, the lowest seen in the last 30 days, decreased 6% (-197) overnight, now 22% below the trailing 30-day average.
- The Prince Rupert pipeline now at 969, gained significantly by 34% (+246) overnight, and 28% above the trailing 30-day average.
- Thunder Bay volumes declined significantly by 21% (-270) overnight - presently at 1,032 and 13% below the trailing 30-day average, with 73% of traffic moving on CP.

## Hopper Car Rationing

- No hopper cars were rationed by either CN or CP in week 3.

## Loads Not Moving

- **The count of cars not moving for 48+ hours declined 20% (-173) overnight, reflecting reduced counts on CN offset by higher counts on CP. Idle car counts presently at 673 and 19% below the trailing 30-day average.**
- CN
  - **The count of idle cars for 48+ hours decreased significantly by 58% (-256) overnight - now at 186 cars.**
  - The number of cars idle for 4+ days fell significantly by 45% (-114) overnight - now at 138 cars.
  - The count of cars not moving for 7+ days increased 19% (+5) overnight - presently at 31 cars.
  - Vancouver represents 10% of all idle cars.
  - In total 37% of all idle cars are dwelling at origin locations.
- CP
  - **CP idle car counts for 48+ hours rose 21% (+83) overnight - presently at 487 cars.**
  - The number of cars idle for 4+ days increased 25% (+22) overnight - presently at 109 cars.

- The number of cars idle for 7+ days increased significantly by 150% (+3) overnight - now at 05 cars.
- Vancouver accounts for 47% of all idle cars.
- In total 1% of all idle cars are dwelling at origin locations.

### **Port Performance**

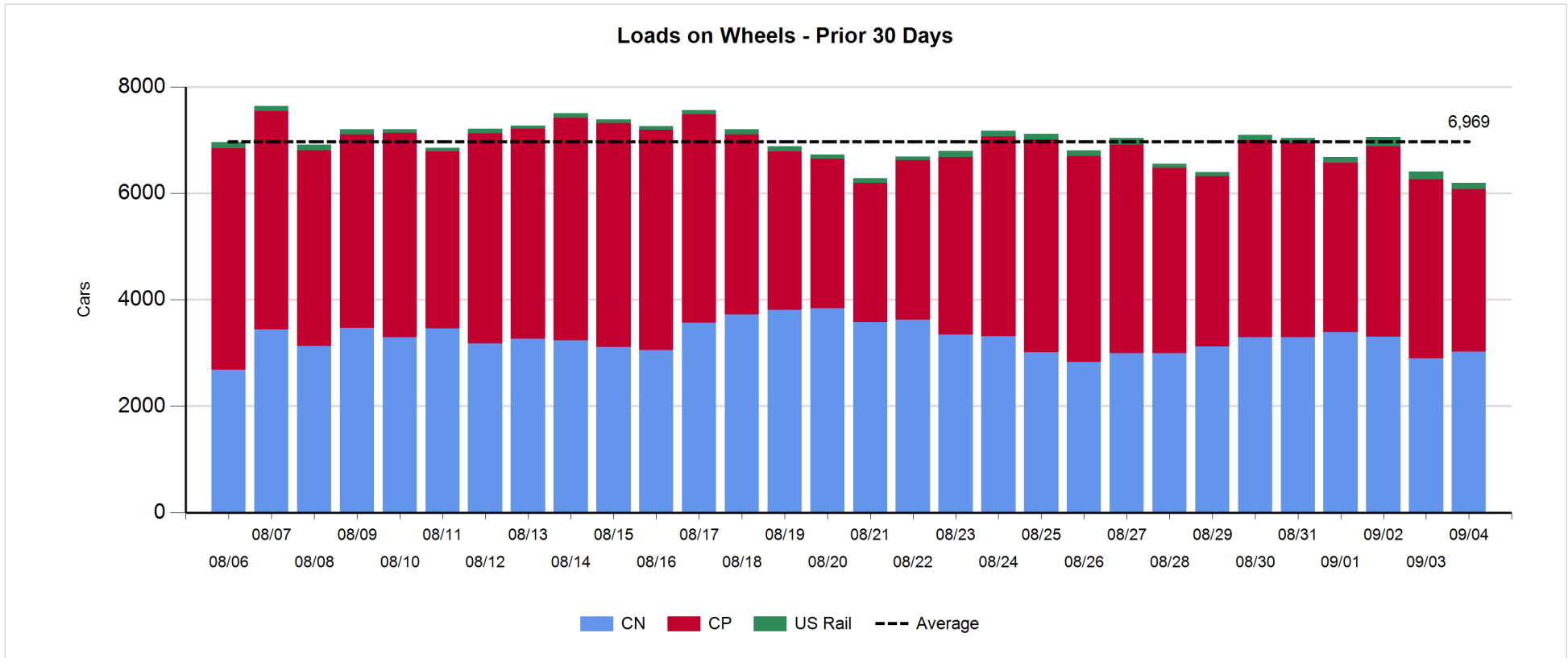
- CN and CP reported a total of 1,044 cars unloaded at the three major ports, now 12% above the trailing 30-day average. Three days in Week 5 unloads now behind last week's pace by 100 unloads, marking reduced unloads at Vancouver and Thunder Bay offset by higher unloads at Prince Rupert.
- Vancouver
  - 671 unloads reported by CN and CP at the Port of Vancouver; CN - 150 and CP - 521. Three days in Week 5 unloads are tracking behind last week's performance by 250 unloads.
  - There are 750 cars on site at Vancouver with more than 100 cars arriving at the port in the last 24 hours.
  - CN and CP have more than 650 cars in British Columbia en route to Vancouver, with 350 cars at Kamloops and west, and 60% of traffic moving on CP.
- Prince Rupert
  - Prince Rupert reported 05 unloads, now ahead of last week's unloads after three days by fewer than 250 unloads.
  - Loads on wheels now below 1,000 cars - presently at 969 cars.
  - There are 150 cars west of Jasper en route to Prince Rupert.
  - There are about 150 cars on site at Prince Rupert with fewer than 100 cars arriving at the port in the last 24 hours.
- Thunder Bay
  - 368 unloads were reported at Thunder Bay yesterday. Three days in Week 5 unloads are tracking behind last week's pace by 100 unloads.
  - There are more than 750 cars on site at Thunder Bay with more than 200 cars arriving at the port in the prior 24 hours.
  - There are 50 cars en route to Thunder Bay from Winnipeg and east.

**Daily Loads on Wheels - 9/4/2019**

	E Canada	Prince Rupert	Thunder Bay	USA/MEX	Vancouver	Total
CN	242	969	278	208	1,330	3,027
CP	224		754	126	1,948	3,052
Short Line	7				26	33
US Rail				82		82
	473	969	1,032	416	3,304	6,194

**Change in Loads on Wheels - Prior 24 Hours**

	E Canada	Prince Rupert	Thunder Bay	USA/MEX	Vancouver	Total
CN	4	246	-242	5	119	132
CP	-3		-28	-2	-284	-317
Short Line	6				-15	-9
US Rail				1	-17	-16
	7	246	-270	4	-197	-210

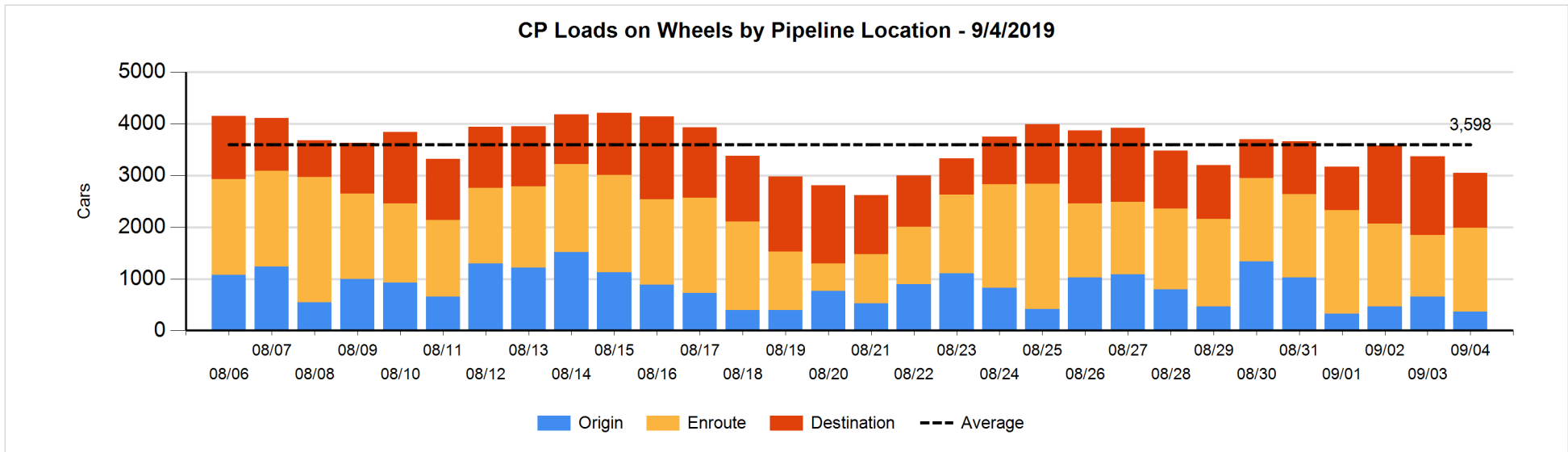
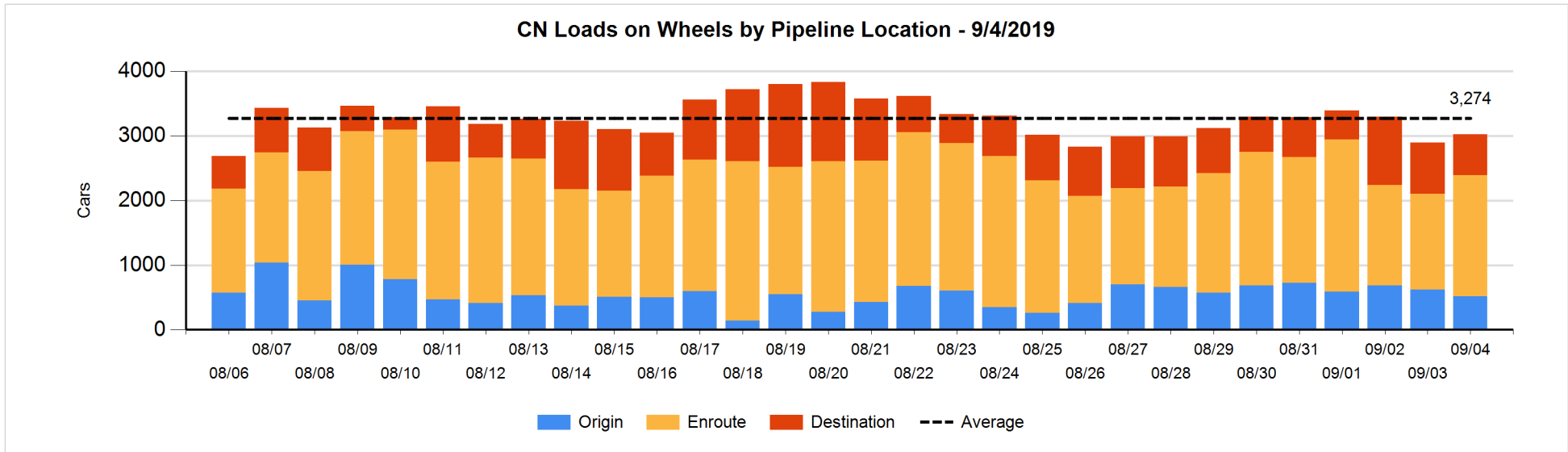


**Daily Loads on Wheels By Pipeline Location - 9/4/2019**

	E Canada	Prince Rupert	Thunder Bay	USA/MEX	Vancouver	Total
CN						
Origin	15	172		5	323	515
Enroute	201	660	50	172	790	1,873
Destination	26	137	228	31	217	639
	242	969	278	208	1,330	3,027
CP						
Origin	57			3	304	364
Enroute	167		213	104	1,141	1,625
Destination			541	19	503	1,063
	224		754	126	1,948	3,052
US Rail / Short Line						
Origin						
Enroute				54		54
Destination	7			28	26	61
	7			82	26	115

**Change in Daily Loads on Wheels By Pipeline Location - Prior 24 Hours**

	E Canada	Prince Rupert	Thunder Bay	USA/MEX	Vancouver	Total
CN						
Origin	-35	-50		2	-21	-104
Enroute	41	214	-106	5	233	387
Destination	-2	82	-136	-2	-93	-151
	4	246	-242	5	119	132
CP						
Origin	-5		-112	-97	-79	-293
Enroute	6		99	95	236	436
Destination	-4		-15	0	-441	-460
	-3		-28	-2	-284	-317
US Rail / Short Line						
Origin						
Enroute				-3		-3
Destination	6			4	-32	-22
	6			1	-32	-25

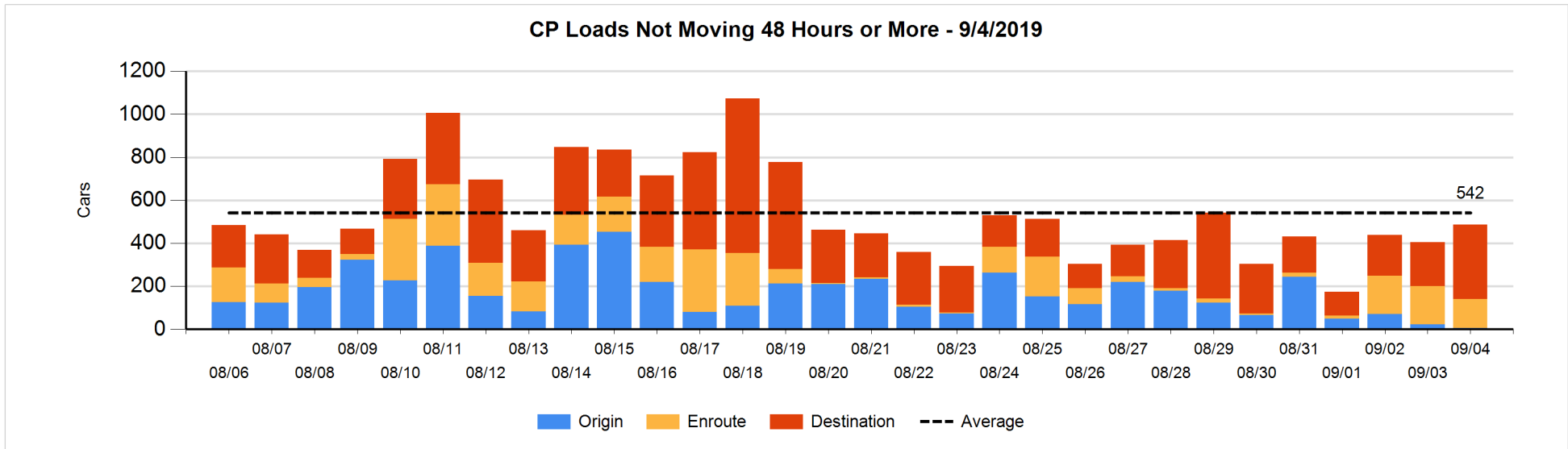
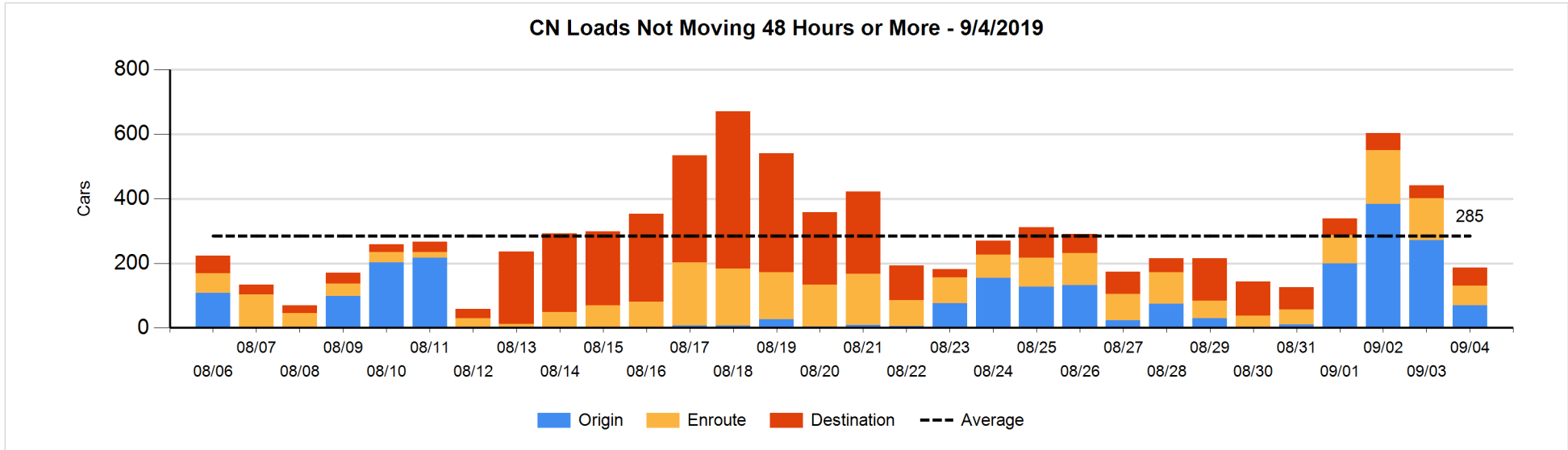


**Loads Not Moving 48 Hours or More - 9/4/2019**

	E Canada	Prince Rupert	Thunder Bay	USA/MEX	Vancouver	Total
<b>CN</b>						
Origin		69				69
Enroute	40	9		7	6	62
Destination	3	2	26	12	12	55
	43	80	26	19	18	186
<b>CP</b>						
Origin	1			1	3	5
Enroute			1		134	135
Destination			241	14	92	347
	1		242	15	229	487
<b>US Rail / Short Line</b>						
Origin						
Enroute				13		13
Destination				14	20	34
				27	20	47

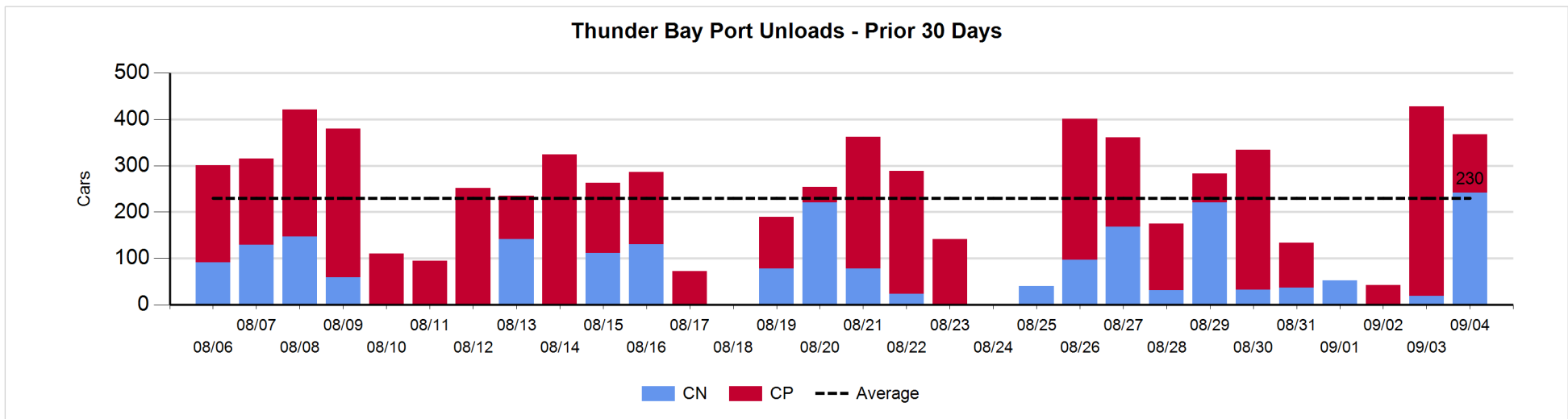
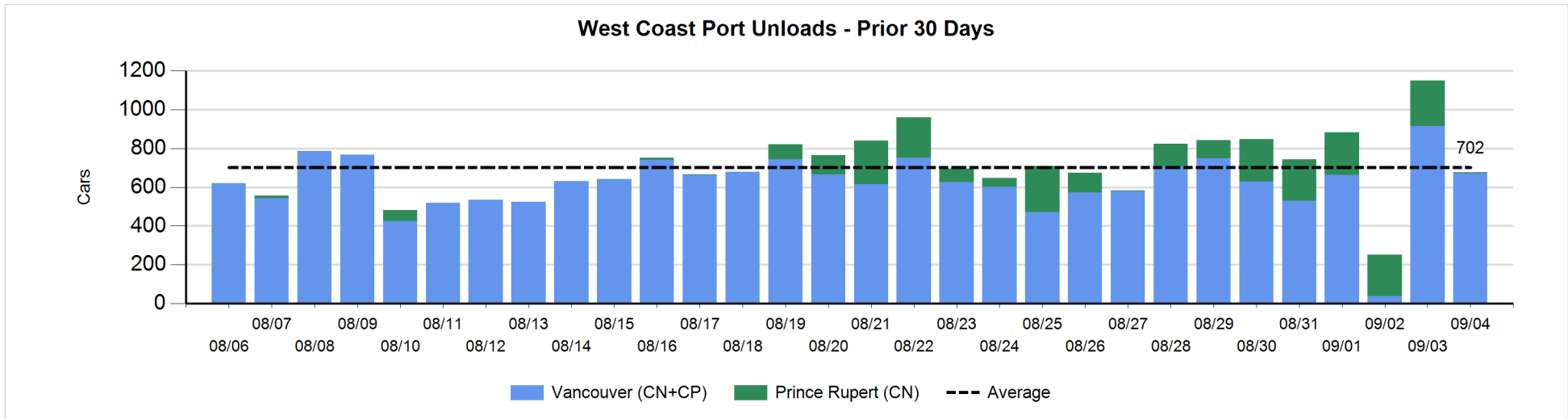
**Change in Loads Not Moving 48 Hours or More - 9/4/2019**

	E Canada	Prince Rupert	Thunder Bay	USA/MEX	Vancouver	Total
<b>CN</b>						
Origin	-12	0			-191	-203
Enroute	-36	-1		-32	1	-68
Destination	0	1	16	4	-6	15
	-48	0	16	-28	-196	-256
<b>CP</b>						
Origin	-6			0	-12	-18
Enroute	-31		-1		-10	-42
Destination			174	0	-31	143
	-37		173	0	-53	83
<b>US Rail / Short Line</b>						
Origin						
Enroute				3		3
Destination				-2	13	11
				1	13	14



Port Unloads - 9/4/2019

	Prince Rupert	Vancouver	West Coast Total	Thunder Bay	Total
CN	5	150	155	242	397
CP		521	521	126	647
	5	671	676	368	1,044





**Port Terminal Status**

**Vancouver**

Daily Activity for 9/4/2019

	Cars Arrived	Cars Received in Interchange	Cars Delivered in Interchange	Cars Placed for Unloading	Loads on Wheels at Destination As of 9/4/2019
CN	106		96	56	217
CP	17	96		452	503
SRY				18	26

**Port Unloads**

	09/04	09/03	Week To Date	Last Week
CN	150	392	555	1,890
CP	521	522	1,067	2,542
SRY	18	6	36	63

**Age Profile of Loaded Cars Waiting Placement for Unloading**

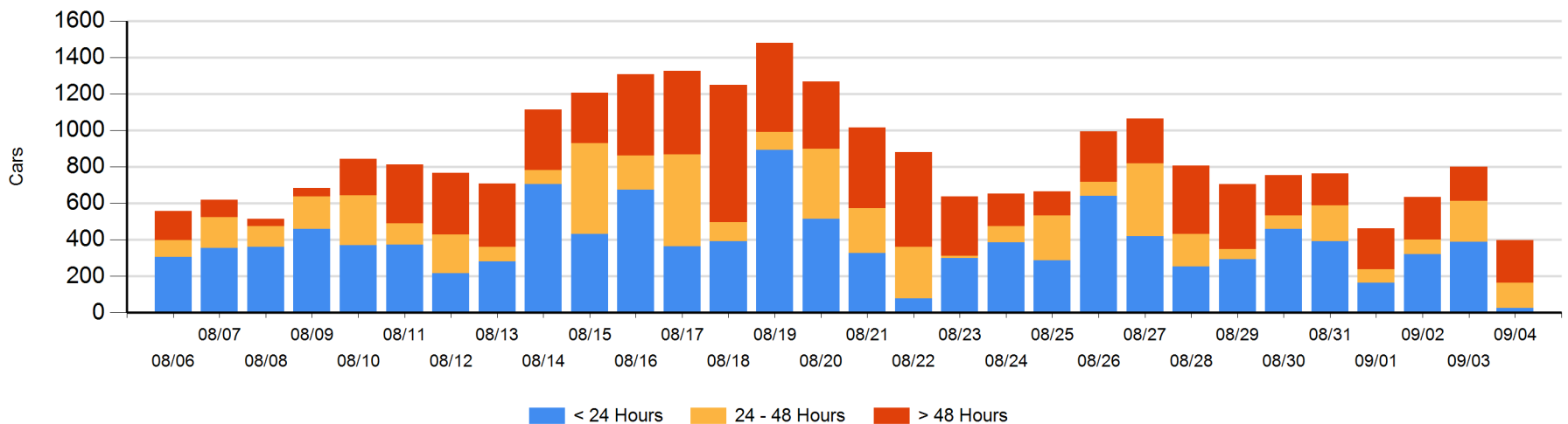
**Today**

	< 24 Hrs	24 - 48 Hrs	> 48-72 Hrs	> 72 Hrs	Total On Hand
CN	10	22	115	27	174
CP	17	115	33	54	219
SRY				4	4

**Change in Last 24 Hours**

	< 24 Hrs	24-48 Hrs	48 - 72 Hrs	> 72 Hrs
CN	-89	-99	115	-56
CP	-274	13	-27	21
SRY				-7

**Loaded Cars on Hand Vancouver Waiting for Placement - Last 30 Days All Railways**



**Port Terminal Status**

**Prince Rupert**

Daily Activity for 9/4/2019

	Cars Arrived	Cars Received in Interchange	Cars Delivered in Interchange	Cars Placed for Unloading	Loads on Wheels at Destination As of 9/4/2019
CN	86			87	137

**Port Unloads**

	09/04	09/03	Week To Date	Last Week
CN	5	235	455	964

**Age Profile of Loaded Cars Waiting Placement for Unloading**

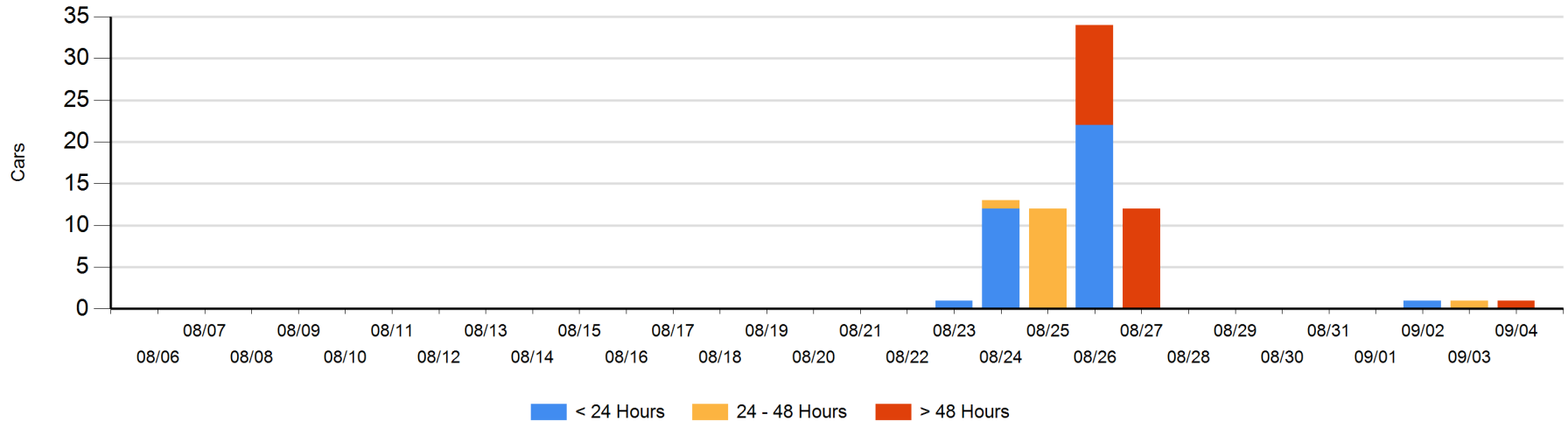
**Today**

	< 24 Hrs	24 - 48 Hrs	> 48-72 Hrs	> 72 Hrs	Total On Hand
CN			1		1

**Change in Last 24 Hours**

	< 24 Hrs	24-48 Hrs	48 - 72 Hrs	> 72 Hrs
CN		-1	1	

Loaded Cars on Hand Prince Rupert Waiting for Placement - Last 30 Days All Railways



**Port Terminal Status**

**Thunder Bay**

Daily Activity for 9/4/2019

	Cars Arrived	Cars Received in Interchange	Cars Delivered in Interchange	Cars Placed for Unloading	Loads on Wheels at Destination As of 9/4/2019
CN	106			55	228
CP	113			102	541

**Port Unloads**

	09/04	09/03	Week To Date	Last Week
CN	242	19	261	639
CP	126	409	577	1,102

**Age Profile of Loaded Cars Waiting Placement for Unloading**

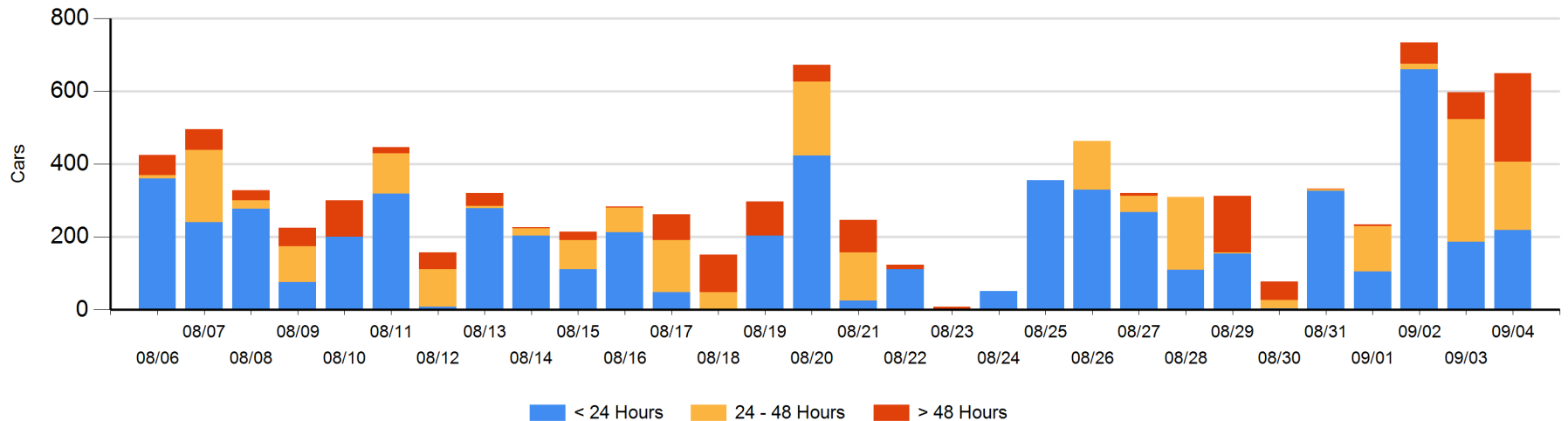
**Today**

	< 24 Hrs	24 - 48 Hrs	> 48-72 Hrs	> 72 Hrs	Total On Hand
CN	106		11	2	119
CP	113	187	205	26	531

**Change in Last 24 Hours**

	< 24 Hrs	24-48 Hrs	48 - 72 Hrs	> 72 Hrs
CN	106	-66	11	0
CP	-74	-83	190	-31

Loaded Cars on Hand Thunder Bay Waiting for Placement - Last 30 Days All Railways



## Measurement Definitions

Loads on Wheels	<p>Count of loaded rail cars including all rail cars that have been released loaded at origin and have not been reported by the railway as unloaded at destination.</p> <p>Counts include all rail cars (hopper cars and boxcars) moving within a pipeline.</p>
Loads Not Moving	<p>Loaded rail cars for which the railways have not reported a movement event for 48 hours or more whether the rail car is at origin, enroute or at destination.</p>
Port Unloads	<p>Count of rail cars reported by railways as unloaded at the western port destinations of Vancouver, Prince Rupert and Thunder Bay.</p> <p>Unload counts include all rail cars (hopper cars and boxcars) unloaded by all receivers including major port terminals, transloaders and other receivers.</p>
Cars Arrived	<p>Count of rail cars reported as arrived at the destination railway terminal.</p>
Cars Received in Interchange	<p>Count of rail cars received in interchange by each railway within a destination railway terminal. Interchange activity is tracked for the Vancouver and Thunder Bay pipelines as applicable.</p>
Cars Delivered in Interchange	<p>Count of rail cars delivered in interchange by each railway within a destination railway terminal. Interchange activity is tracked for the Vancouver and Thunder Bay pipelines as applicable.</p>
Cars Placed for Unloading	<p>Count of rail cars reported by the railways as placed loaded at the receiver's facility for unloading.</p>
Loads on Wheels at Destination	<p>Count of rail cars that remain under load within the destination railway terminal including rail cars that have been reported as placed for unloading but not yet reported as unloaded.</p>
Waiting Placement for Unloading	<p>Count of rail cars that have been reported as arrived at the destination railway terminal but not reported as placed for unloading by the railway.</p> <p>For the Ports of Vancouver, Prince Rupert and Thunder Bay the count of rail cars waiting placement for unloading is categorized by age – i.e. the elapsed time from arrival at destination to the current report date.</p>