

Loads on Wheels

- Loads on wheels declined 7% (789 cars) overnight falling below the 11,000 car threshold for the first time in 7 days - loads on wheels now at 10,822 - in line with the trailing 30 day average
- Lower loads on wheels reflects declines on both CN (-424) and CP (-535).
- The bulk of the decline for both railways can be seen in the Vancouver corridor which accounted for 81% of the decline.
- Volumes declined in 4 of 5 corridors for CN led by Vancouver (-314) with nominal declines seen in all other corridors other than Thunder Bay which was unchanged. System wide CN loads on wheels now at 5,514 - 6% above the trailing 30 day average.
- Lower CP volumes reflect reductions in all corridors led by Vancouver (-341) and Thunder Bay (-140). CP system wide loads on wheels now at 4,690 - the lowest level in the prior 21 days and 8% below the trailing 30 day average.
- Vancouver now at 5,846 the lowest level in the prior 7 days reflecting heavy unloads over the weekend - loads on wheels are now 10% below the trailing 30 day average.
- The Prince Rupert pipeline currently sits at 1,424 unchanged overnight but up 30% as compared to 4 days ago - now 15% above the trailing 30 day average.
- Thunder Bay volumes declined 10% overnight after climbing to nearly 1,500 cars - remains above 1,300. The current pipeline has traffic split almost evenly between the two railways.

Hopper Car Rationing

- CN rationed 659 cars in week 35 - a 70% increase from the prior week. Early indications are that rationing is continuing in weeks 36 and 37 although the level of such rationing is not yet known.

Loads Not Moving

- **The count of cars not moving for 48+ hours on CN and CP increased 9% (262 cars) overnight with 85% of the increase attributable to CN. The count of idle cars now stands at 3,117 - above 3,000 for the 3rd time in the last 4 days.** Idle car counts have been above the 2,400 car mark for 28 of the last 30 days.
- CN
 - **The count of idle cars increased by 21% (225 cars) in the prior 24 hours. After falling to 400 cars 9 days ago the count of idle cars on CN has risen in 7 of the last 10 days to now sit at 1,277 - the highest level seen in the last 30 days.**
 - The number of cars idle for 4+ days increased 35% overnight - now above 550 cars - the highest level seen in the last 30 days.
 - The count of cars not moving for 7+ days declined 60% after rising to nearly 200 cars yesterday - now below 100 cars.
 - Vancouver destined traffic represents 56% of all idle cars with 37% of all idle cars currently dwelling at origin.
- CP
 - **CP counts increased nominally overnight following two consecutive days of decline. The count of idle cars on CP is now 1,841 below the 2,000 car threshold for the second consecutive day and down 20% from 3 days ago.**
 - The number of cars idle for 4+ days declined 19% overnight falling below the 1,000 car threshold for only the second time in the last 13 days.
 - The count of cars idle for 7+ days declined 25% overnight - remains above 300 cars.
 - The count of idle cars in the Vancouver corridor continues to account for 82% of all idle cars on CP. Thunder Bay counts have declined steadily over the past week and at less than 100 cars now represent only 5% of all idle cars.
 - In total 92% of all idle cars are dwelling at origin locations - as has been the case for much of the past 30 days.

Port Performance

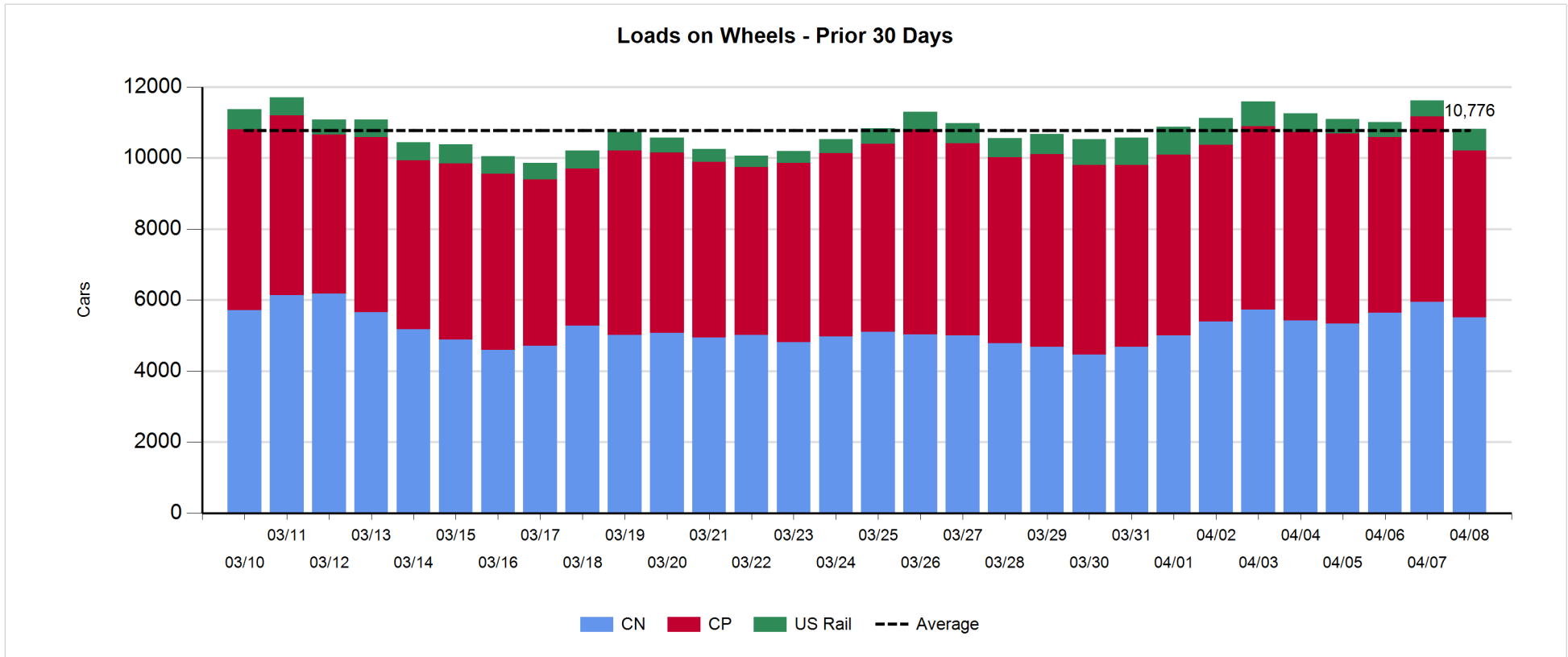
- CN and CP reported a total of 1,271 cars unloaded at the three western ports - with nearly 2,000 unloads over the weekend - nearly double that seen the prior weekend - week 36 finished above 7,700 unloads, some 800 more than the prior week. This reflects slightly lower unloads at Prince Rupert, slightly higher unloads at Thunder Bay and a 20% week over week increase at Vancouver which came in above 5,300 cars.
- Vancouver
 - 837 cars reported unloaded by CN and CP at the Port of Vancouver; CN - 409 and CP - 428
 - There are approximately 1,100 cars on hand at Vancouver waiting placement for unloading - with nearly 800 cars arriving at the port in the last 24 hours.
 - CN and CP have 800 cars enroute to Vancouver west of Alberta with 70% of traffic currently moving on CN; 40% (2,300) of all cars destined to Vancouver are currently at origin locations awaiting movement with 1,600 of these - 87% of which are situated on CP lines - not having moved for 48+ hours.
- Prince Rupert
 - Following three consecutive days (Thu - Sat) with fewer than 100 unloads per day Prince Rupert finished week 36 with more than 200 unloads reported on Sunday to complete the week about 10% below the prior week's levels falling short of 1,300 for the week.
 - Loads on wheels are currently above the 1,400 car mark.
 - There are currently 250 cars west of Jasper - 150 west of Prince George - with all remaining cars east of Jasper. Without interruption in movement current cars on hand at the Port plus cars enroute west of Jasper should support a reasonable level of unloads in the next few days.

Daily Loads on Wheels - 4/8/2018

	E Canada	Prince Rupert	Thunder Bay	USA/MEX	Vancouver	Total
CN	438	1,424	718	357	2,577	5,514
CP	147		631	692	3,220	4,690
Short Line	129				49	178
US Rail				440		440
	714	1,424	1,349	1,489	5,846	10,822

Change in Loads on Wheels - Prior 24 Hours

	E Canada	Prince Rupert	Thunder Bay	USA/MEX	Vancouver	Total
CN	-24	-40	0	-46	-314	-424
CP	-1	-1	-140	-52	-341	-535
Short Line	-9				17	8
US Rail				162		162
	-34	-41	-140	64	-638	-789



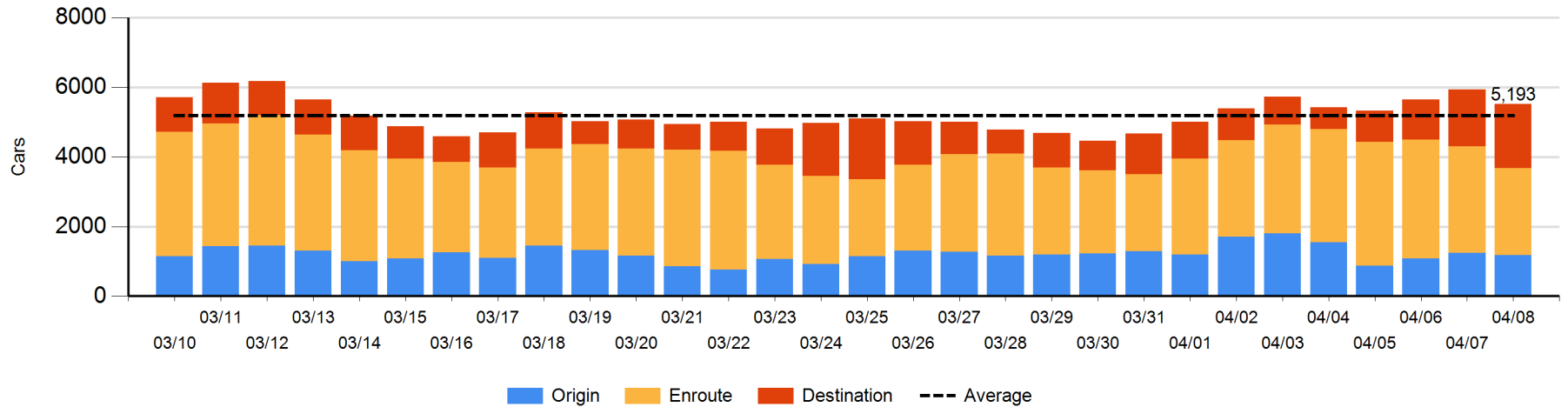
Daily Loads on Wheels By Pipeline Location - 4/8/2018

	E Canada	Prince Rupert	Thunder Bay	USA/MEX	Vancouver	Total
CN						
Origin	31	469	98	26	546	1,170
Enroute	337	717	171	275	1,006	2,506
Destination	70	238	449	56	1,026	1,839
	438	1,424	718	357	2,578	5,515
CP						
Origin	80		233	258	1,781	2,352
Enroute	67		277	419	1,230	1,993
Destination			121	15	209	345
	147		631	692	3,220	4,690
US Rail / Short Line						
Origin	5					5
Enroute	77			245		322
Destination	47			195	49	291
	129			440	49	618

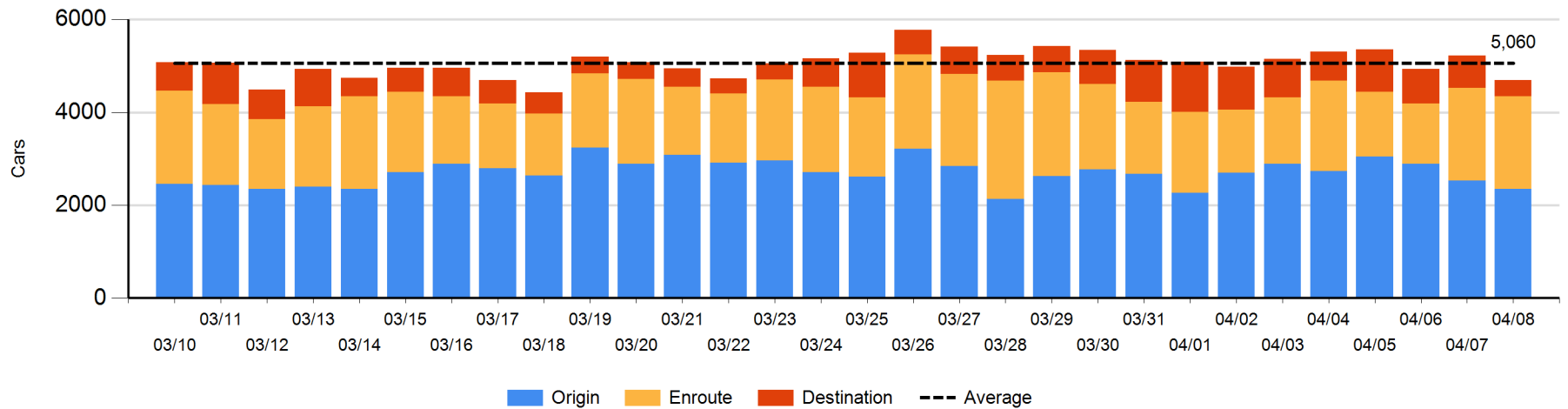
Change in Daily Loads on Wheels By Pipeline Location - Prior 24 Hours

	E Canada	Prince Rupert	Thunder Bay	USA/MEX	Vancouver	Total
CN						
Origin	-95	99	0	0	-73	-69
Enroute	68	63	-278	-55	-357	-559
Destination	3	-202	278	9	116	204
	-24	-40	0	-46	-314	-424
CP						
Origin	-1		-121	23	-73	-172
Enroute	0		121	-58	-74	-11
Destination		-1	-140	-17	-194	-352
	-1	-1	-140	-52	-341	-535
US Rail / Short Line						
Origin	0					0
Enroute	1			123		124
Destination	-10			39	17	46
	-9			162	17	170

CN Loads on Wheels by Pipeline Location - 4/8/2018



CP Loads on Wheels by Pipeline Location - 4/8/2018

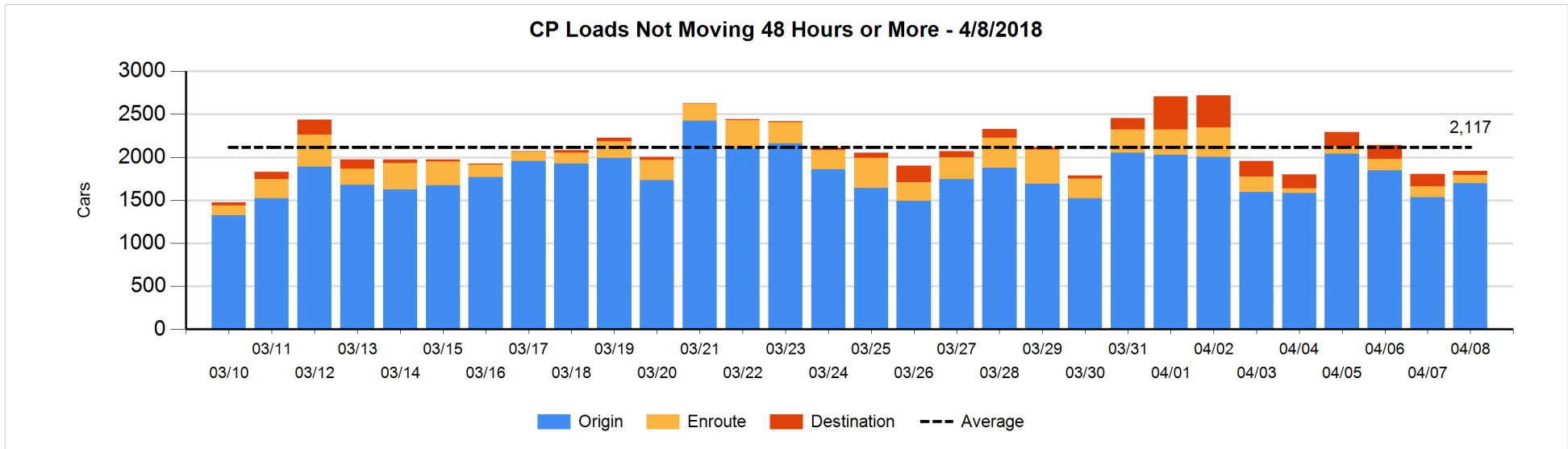
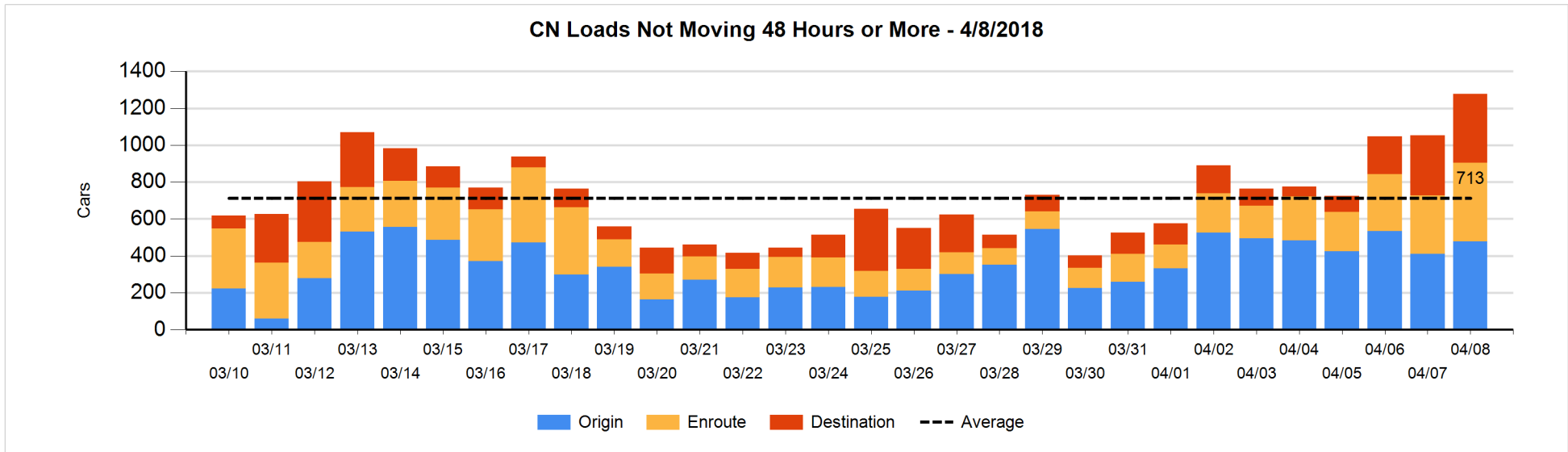


Loads Not Moving 48 Hours or More - 4/8/2018

	E Canada	Prince Rupert	Thunder Bay	USA/MEX	Vancouver	Total
CN						
Origin	31	115	98	17	216	477
Enroute	61	16		113	238	428
Destination	43	24	4	37	264	372
	135	155	102	167	718	1277
CP						
Origin	80		66	113	1439	1698
Enroute	1		24	26	43	94
Destination			9	15	25	49
	81		99	154	1507	1841
US Rail / Short Line						
Origin						
Enroute	27			29		56
Destination	24			91	21	136
	51			120	21	192

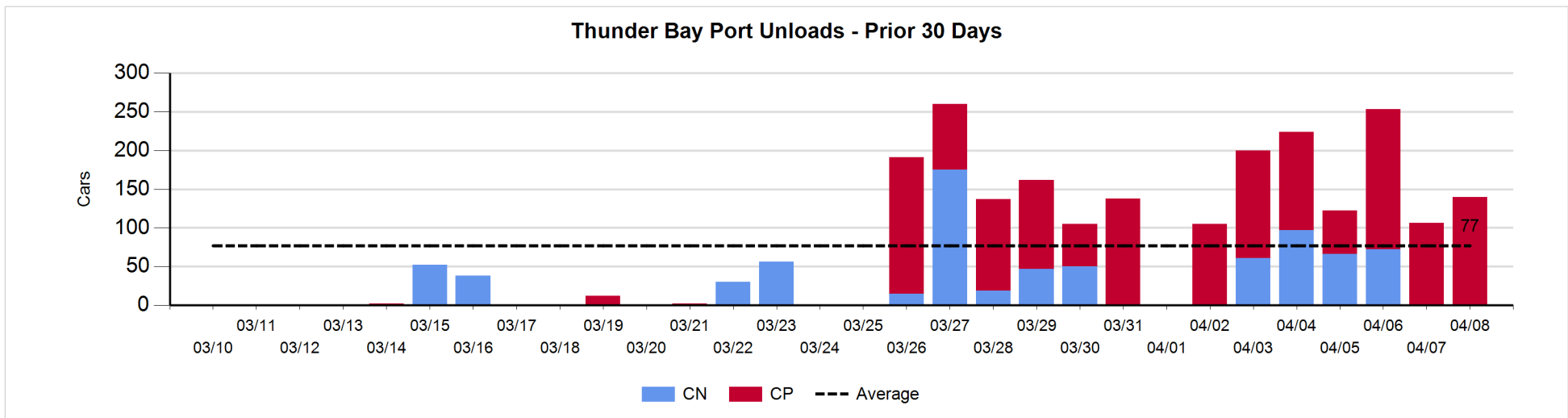
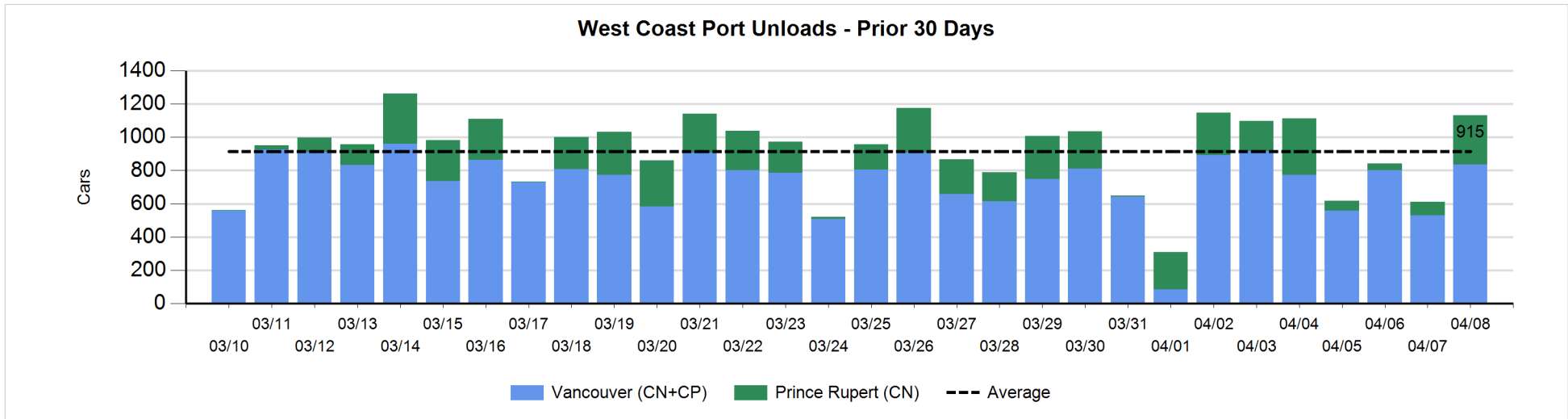
Change in Loads Not Moving 48 Hours or More - 4/8/2018

	E Canada	Prince Rupert	Thunder Bay	USA/MEX	Vancouver	Total
CN						
Origin	-42	23	98	16	-29	66
Enroute	26	0	-1	-4	90	111
Destination	7	-90	1	1	129	48
	-9	-67	98	13	190	225
CP						
Origin	-1		-60	18	205	162
Enroute	-1		0	-1	-27	-29
Destination		-1	-36	-2	-57	-96
	-2	-1	-96	15	121	37
US Rail / Short Line						
Origin						
Enroute	0			2		2
Destination	-4			2	7	5
	-4			4	7	7



Port Unloads - 4/8/2018

	Prince Rupert	Vancouver	West Coast Total	Thunder Bay	Total
CN	294	409	703		703
CP		428	428	140	568
	294	837	1,131	140	1,271



Port Terminal Status

Vancouver

Daily Activity for 4/8/2018

	Cars Arrived	Cars Received in Interchange	Cars Delivered in Interchange	Cars Placed for Unloading	Loads on Wheels at Destination As of 4/8/2018
CN	345	150	189	251	1,026
CP	433	187	166	331	209
SRY		18			49

Port Unloads

	04/08	04/07	Week To Date	Last Week
CN	409	273	2,547	2,342
CP	428	257	2,764	2,125
SRY	1		62	81

Age Profile of Loaded Cars Waiting Placement for Unloading

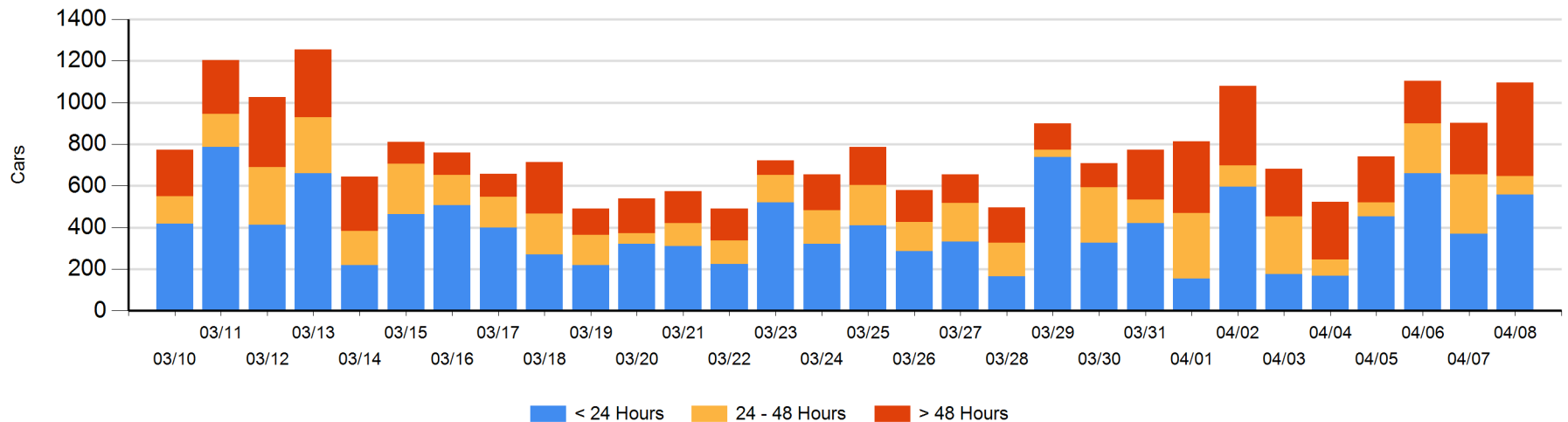
Today

	< 24 Hrs	24 - 48 Hrs	> 48-72 Hrs	> 72 Hrs	Total On Hand
CN	305	48	233	53	639
CP	252	43	54	108	457
SRY					0

Change in Last 24 Hours

	< 24 Hrs	24-48 Hrs	48 - 72 Hrs	> 72 Hrs
CN	167	-185	111	36
CP	21	-11	4	50
SRY				

Loaded Cars on Hand Vancouver Waiting for Placement - Last 30 Days All Railways



Port Terminal Status

Prince Rupert

Daily Activity for 4/8/2018

	Cars Arrived	Cars Received in Interchange	Cars Delivered in Interchange	Cars Placed for Unloading	Loads on Wheels at Destination As of 4/8/2018
CN	99	1		99	238

Port Unloads

	04/08	04/07	Week To Date	Last Week
CN	294	80	1,245	1,365

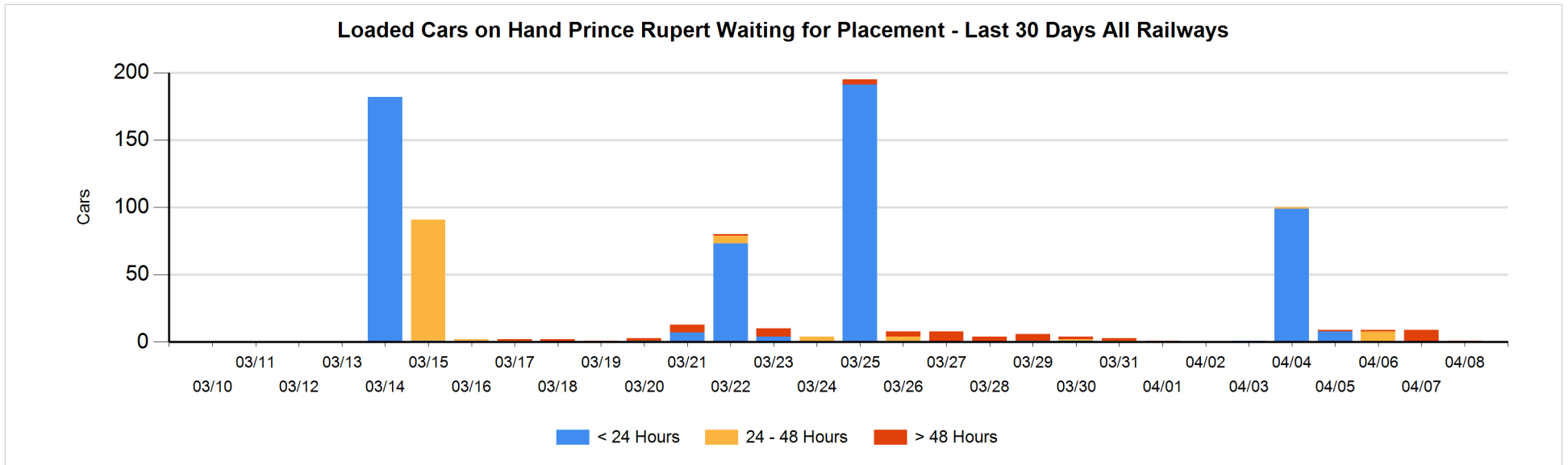
Age Profile of Loaded Cars Waiting Placement for Unloading

Today

	< 24 Hrs	24 - 48 Hrs	> 48-72 Hrs	> 72 Hrs	Total On Hand
CN				1	1

Change in Last 24 Hours

	< 24 Hrs	24-48 Hrs	48 - 72 Hrs	> 72 Hrs
CN			-8	1



Port Terminal Status

Thunder Bay

Daily Activity for 4/8/2018

	Cars Arrived	Cars Received in Interchange	Cars Delivered in Interchange	Cars Placed for Unloading	Loads on Wheels at Destination As of 4/8/2018
CN	278			283	449
CP				112	121

Port Unloads

	04/08	04/07	Week To Date	Last Week
CN			296	306
CP	140	106	854	687

Age Profile of Loaded Cars Waiting Placement for Unloading

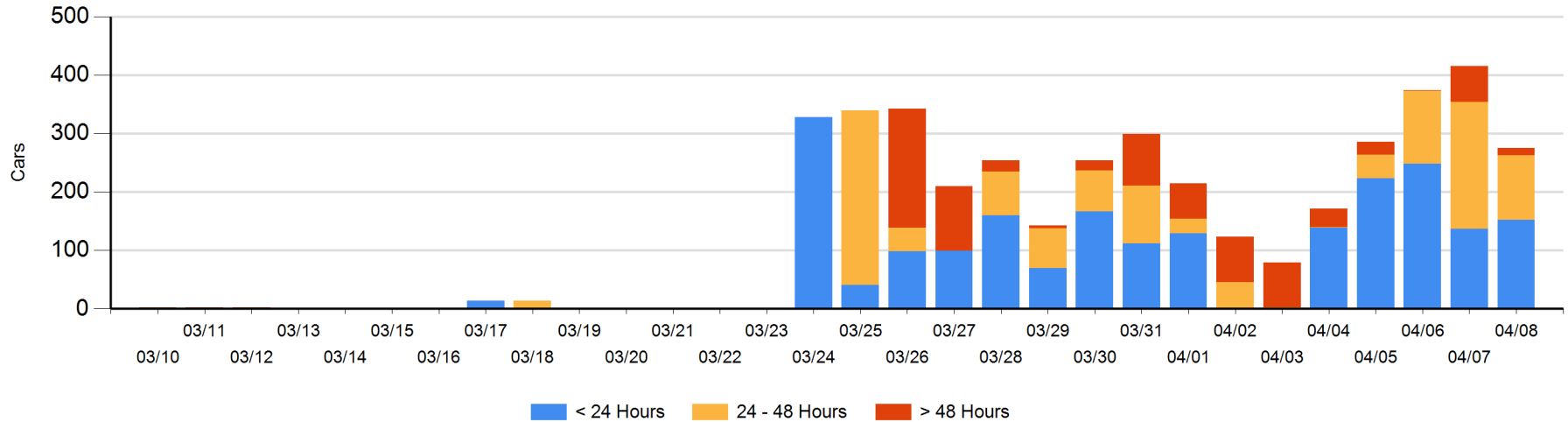
Today

	< 24 Hrs	24 - 48 Hrs	> 48-72 Hrs	> 72 Hrs	Total On Hand
CN	152		10		162
CP		111	2		113

Change in Last 24 Hours

	< 24 Hrs	24-48 Hrs	48 - 72 Hrs	> 72 Hrs
CN	126	-141	10	
CP	-111	35	-35	-24

Loaded Cars on Hand Thunder Bay Waiting for Placement - Last 30 Days All Railways



Measurement Definitions

Loads on Wheels	<p>Count of loaded rail cars including all rail cars that have been released loaded at origin and have not been reported by the railway as unloaded at destination.</p> <p>Counts include all rail cars (hopper cars and boxcars) moving within a pipeline.</p>
Loads Not Moving	<p>Loaded rail cars for which the railways have not reported a movement event for 48 hours or more whether the rail car is at origin, enroute or at destination.</p>
Port Unloads	<p>Count of rail cars reported by railways as unloaded at the western port destinations of Vancouver, Prince Rupert and Thunder Bay.</p> <p>Unload counts include all rail cars (hopper cars and boxcars) unloaded by all receivers including major port terminals, transloaders and other receivers.</p>
Cars Arrived	<p>Count of rail cars reported as arrived at the destination railway terminal.</p>
Cars Received in Interchange	<p>Count of rail cars received in interchange by each railway within a destination railway terminal. Interchange activity is tracked for the Vancouver and Thunder Bay pipelines as applicable.</p>
Cars Delivered in Interchange	<p>Count of rail cars delivered in interchange by each railway within a destination railway terminal. Interchange activity is tracked for the Vancouver and Thunder Bay pipelines as applicable.</p>
Cars Placed for Unloading	<p>Count of rail cars reported by the railways as placed loaded at the receiver's facility for unloading.</p>
Loads on Wheels at Destination	<p>Count of rail cars that remain under load within the destination railway terminal including rail cars that have been reported as placed for unloading but not yet reported as unloaded.</p>
Waiting Placement for Unloading	<p>Count of rail cars that have been reported as arrived at the destination railway terminal but not reported as placed for unloading by the railway.</p> <p>For the Ports of Vancouver, Prince Rupert and Thunder Bay the count of rail cars waiting placement for unloading is categorized by age – i.e. the elapsed time from arrival at destination to the current report date.</p>