

## Loads on Wheels

- Loads on wheels declined by 3% (294 cars) overnight remaining below the 11,000 car threshold for the third consecutive day - loads on wheels now at 10,676 - in line with the trailing 30 day average
- Lower loads on wheels reflects declines on both CN (-131) and CP (-35) as well as nominal declines on US and shortline carriers who previously had traffic interchanged to them by CN or CP.
- On a net basis the decrease is attributable primarily to lower volumes in the Vancouver corridor (-267) for both railways offset by an increase in Prince Rupert traffic (+142).
- While CN volumes are lower on a net basis this reflects declines in the Vancouver (-204) and Thunder Bay (-204) corridors offset by increases in the Prince Rupert (+142) and E Canada (+100) corridors. System wide CN loads on wheels now at 5,236 - 2% above the trailing 30 day average.
- Lower CP volumes reflect primarily a decline in the Vancouver corridor offset by nominal increases in other corridors. CP system wide loads on wheels now at 5,099 - in line with the trailing 30 day average.
- Vancouver now at 5,875 dipping below the 6,000 car threshold - loads on wheels are now 8% below the trailing 30 day average.
- The Prince Rupert pipeline currently sits at 1,646 - the highest level in the last 30 days - now 31% above the trailing 30 day average.
- Thunder Bay volumes declined 16% overnight - the third consecutive day of decline - reflecting primarily lower volumes on CN with a marginal uptick on CP - now below 1,000 cars for the first time in the last two weeks. The current pipeline has 65% of traffic moving on CP.

## Hopper Car Rationing

- CN rationed 659 cars in week 35 - a 70% increase from the prior week. Early indications are that rationing is continuing in weeks 36 and 37. Current estimates are that rationing in week 36 will be lower than the prior week.

## Loads Not Moving

- **The count of cars not moving for 48+ hours on CN and CP declined by 13% (313 cars) overnight reflecting lower counts on CP and a slight increase on CN. The count of idle cars now stands at 2,119 - the lowest level in the prior 30 days and below the 2,400 car mark for only the second time in the last 30 days.**
- CN
  - **The count of idle cars increased slightly overnight (71 cars). Idle cars on CN now at 680.**
  - The number of cars idle for 4+ days increased by 10% and now sits above 300 cars.
  - The count of cars not moving for 7+ days unchanged overnight - remains above 50 cars.
  - Vancouver destined traffic represents 33% of all idle cars with 38% of all idle cars currently dwelling at origin.
- CP
  - **CP counts declined 21% (384 cars) overnight - the second consecutive day of decline. The count of idle cars on CP is now 1,439 - the lowest level in the last 30 days.**
  - The number of cars idle for 4+ days was unchanged overnight and remains above 900 cars.
  - The count of cars idle for 7+ days was unchanged overnight - remains at 350 cars.
  - The count of idle cars in the Vancouver corridor continues to account for 85% of all idle cars on CP. Thunder Bay counts now below 50 cars accounting for only 2% of all idle cars.
  - In total 90% of all idle cars are dwelling at origin locations - as has been the case for much of the past 30 days.

## Port Performance

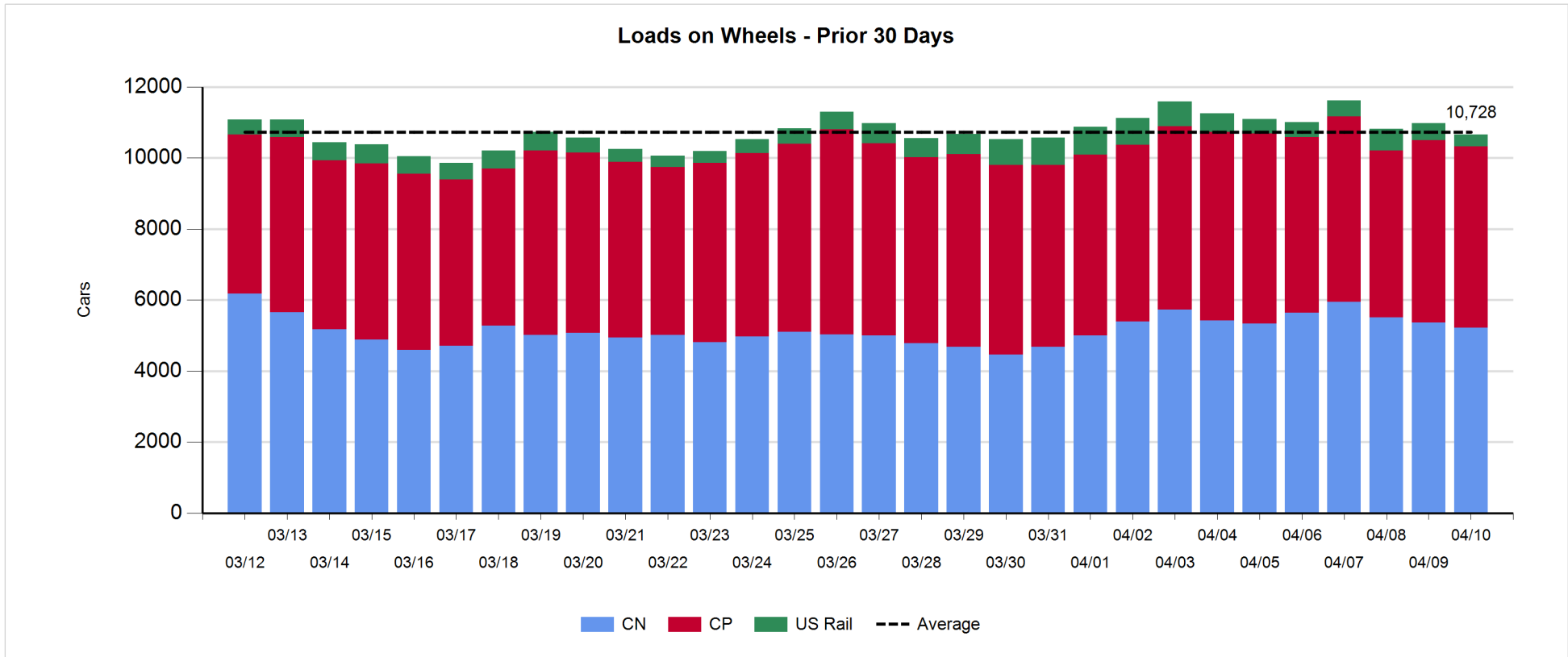
- CN and CP reported a total of 1,360 cars unloaded at the three western ports - the 7th time in the last 9 days where port unloads have exceed 1,000 cars. Two days in to week 37 unloads are tracking slightly ahead of last week's pace reflecting higher unloads at Thunder Bay, lower unloads at Vancouver and comparable unloads at Prince Rupert.
- Vancouver
  - 872 cars reported unloaded by CN and CP at the Port of Vancouver; CN - 408 and CP - 464
  - There are approximately 860 cars on hand at Vancouver waiting placement for unloading - with nearly 1,000 cars arriving at the port in the last 24 hours.
  - CN and CP have 650+ cars enroute to Vancouver west of Alberta with 70% of traffic currently moving on CP; 39% (2,300) of all cars destined to Vancouver are currently at origin locations awaiting movement with 1,200 of these - 95% of which are situated on CP lines - not having moved for 48+ hours.
- Prince Rupert
  - Prince Rupert unloads fell below 150 cars yesterday resulting in week 37 unload totals falling marginally behind last week's pace after two days.
  - Loads on wheels are currently above the 1,600 car mark - the highest level seen in the prior 30 days. 40% of all Prince Rupert destined cars are currently sitting at origin locations.
  - There are currently 450+ cars west of Jasper - 250 west of Prince George. With less than 100 cars on site the timely movement of cars west of Jasper will determine whether desired unload levels can be supported over the course of the next few days.

**Daily Loads on Wheels - 4/10/2018**

	E Canada	Prince Rupert	Thunder Bay	USA/MEX	Vancouver	Total
CN	560	1,632	338	341	2,351	5,222
CP	193		622	808	3,476	5,099
Short Line	25				48	73
US Rail				268		268
	778	1,632	960	1,417	5,875	10,662

**Change in Loads on Wheels - Prior 24 Hours**

	E Canada	Prince Rupert	Thunder Bay	USA/MEX	Vancouver	Total
CN	100	128	-204	35	-204	-145
CP	8		25	-9	-59	-35
Short Line	-30				-4	-34
US Rail				-94		-94
	78	128	-179	-68	-267	-308



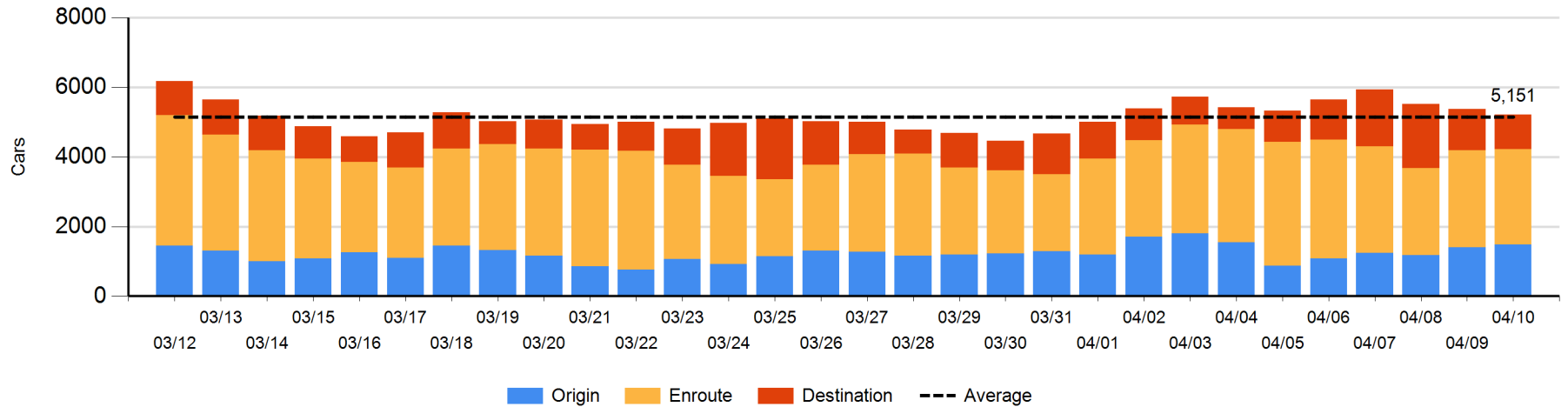
**Daily Loads on Wheels By Pipeline Location - 4/10/2018**

	E Canada	Prince Rupert	Thunder Bay	USA/MEX	Vancouver	Total
CN						
Origin	176	634	146	50	482	1,488
Enroute	295	955	44	276	1,161	2,731
Destination	89	43	148	15	709	1,004
	560	1,632	338	341	2,352	5,223
CP						
Origin	64		227	281	1,808	2,380
Enroute	73		135	496	1,206	1,910
Destination	56		260	31	462	809
	193		622	808	3,476	5,099
US Rail / Short Line						
Origin						
Enroute	9			153		162
Destination	16			115	48	179
	25			268	48	341

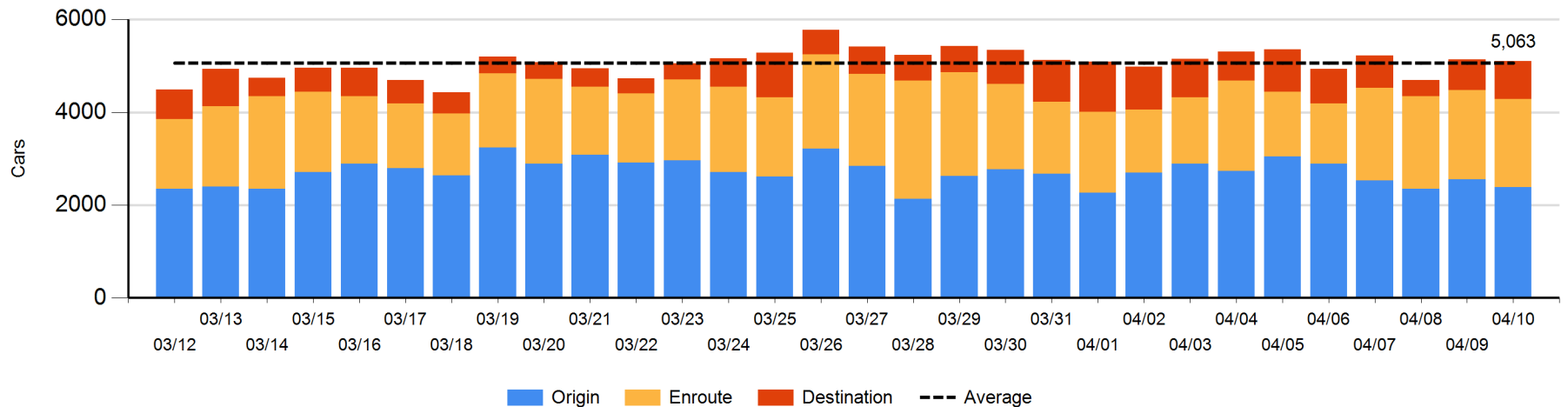
**Change in Daily Loads on Wheels By Pipeline Location - Prior 24 Hours**

	E Canada	Prince Rupert	Thunder Bay	USA/MEX	Vancouver	Total
CN						
Origin	110	11	44	18	-99	84
Enroute	-7	159	-30	18	-202	-62
Destination	-3	-42	-218	-1	97	-167
	100	128	-204	35	-204	-145
CP						
Origin	-1		123	-97	-197	-172
Enroute	9		-225	78	125	-13
Destination	0		127	10	13	150
	8		25	-9	-59	-35
US Rail / Short Line						
Origin						
Enroute	-3			-47		-50
Destination	-27			-47	-4	-78
	-30			-94	-4	-128

**CN Loads on Wheels by Pipeline Location - 4/10/2018**



**CP Loads on Wheels by Pipeline Location - 4/10/2018**

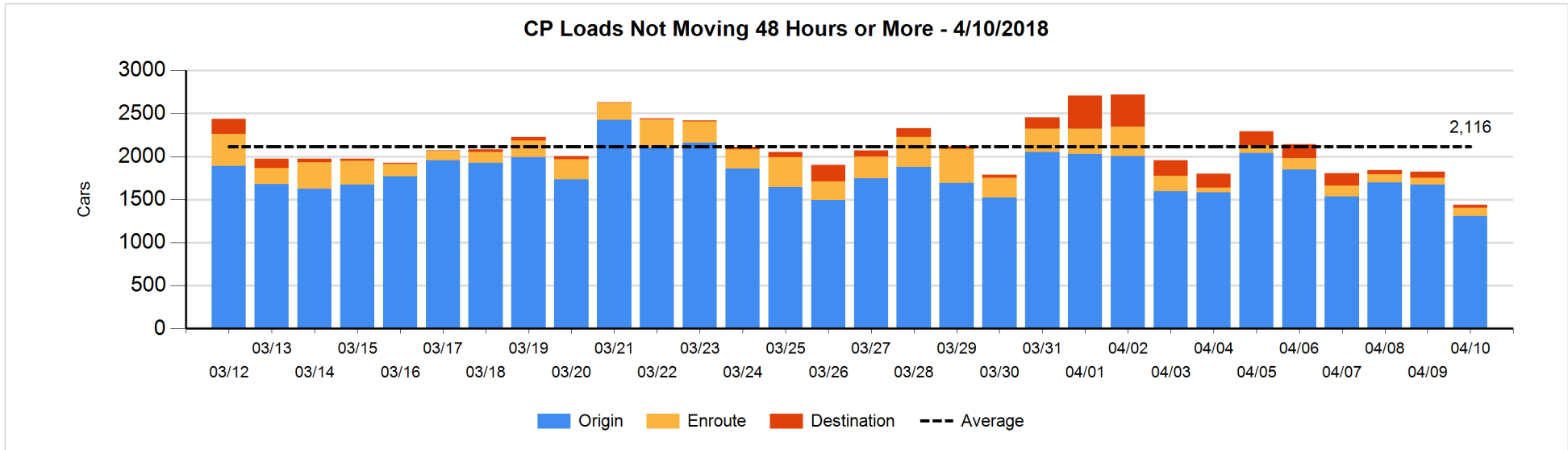
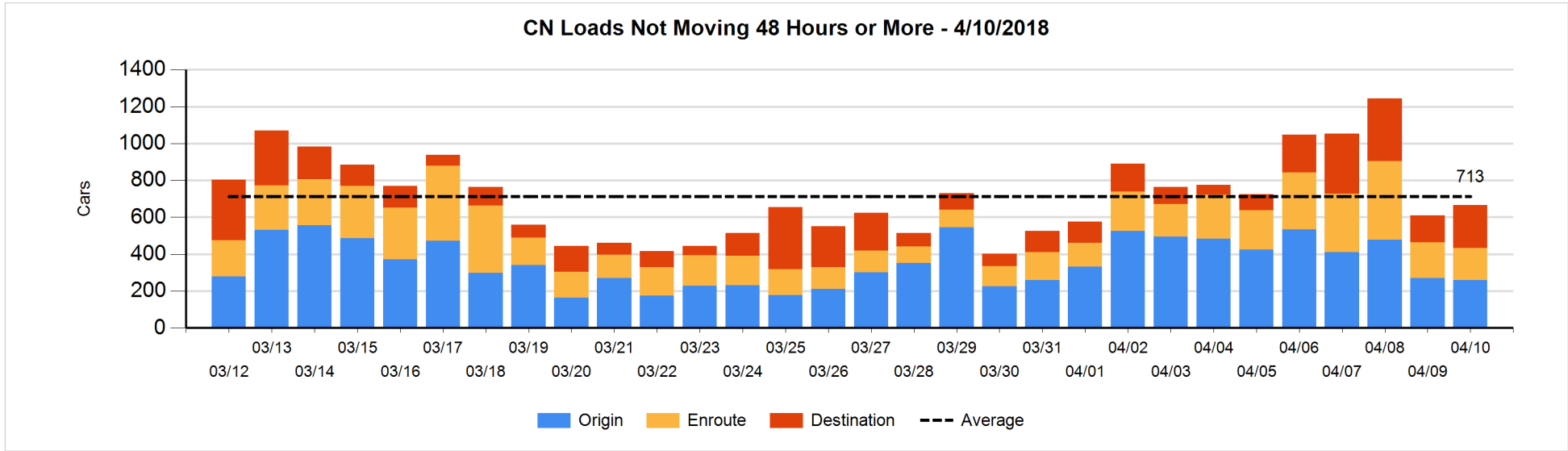


**Loads Not Moving 48 Hours or More - 4/10/2018**

	E Canada	Prince Rupert	Thunder Bay	USA/MEX	Vancouver	Total
<b>CN</b>						
Origin		100	97	1	61	259
Enroute	58	2	2	73	38	173
Destination	38	13	49	10	124	234
	96	115	148	84	223	666
<b>CP</b>						
Origin	10		14	136	1145	1305
Enroute	1		12	40	42	95
Destination			5		34	39
	11		31	176	1221	1439
<b>US Rail / Short Line</b>						
Origin						
Enroute	7			20		27
Destination	2			27	21	50
	9			47	21	77

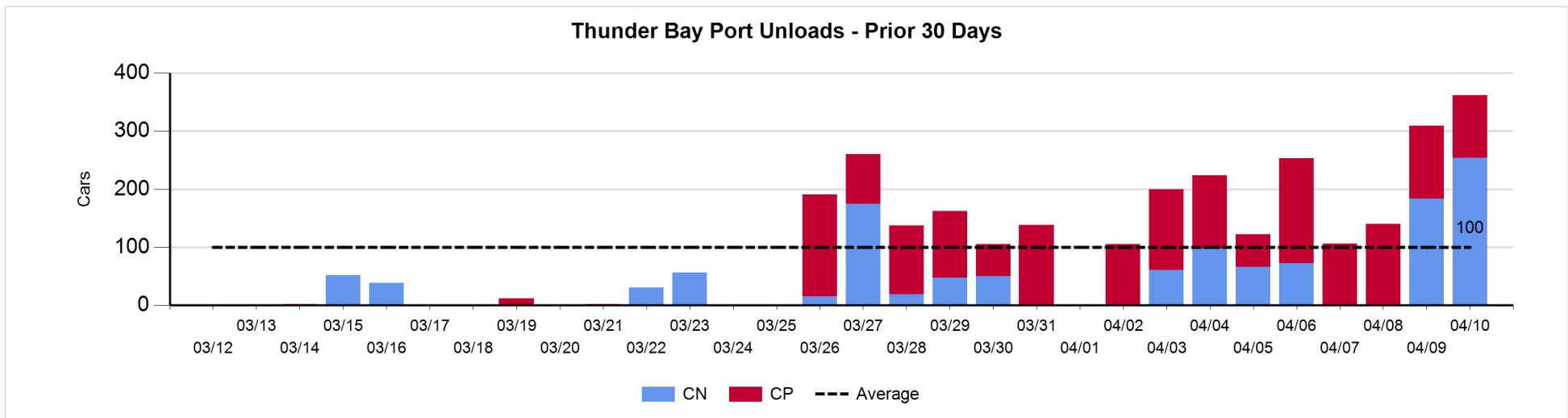
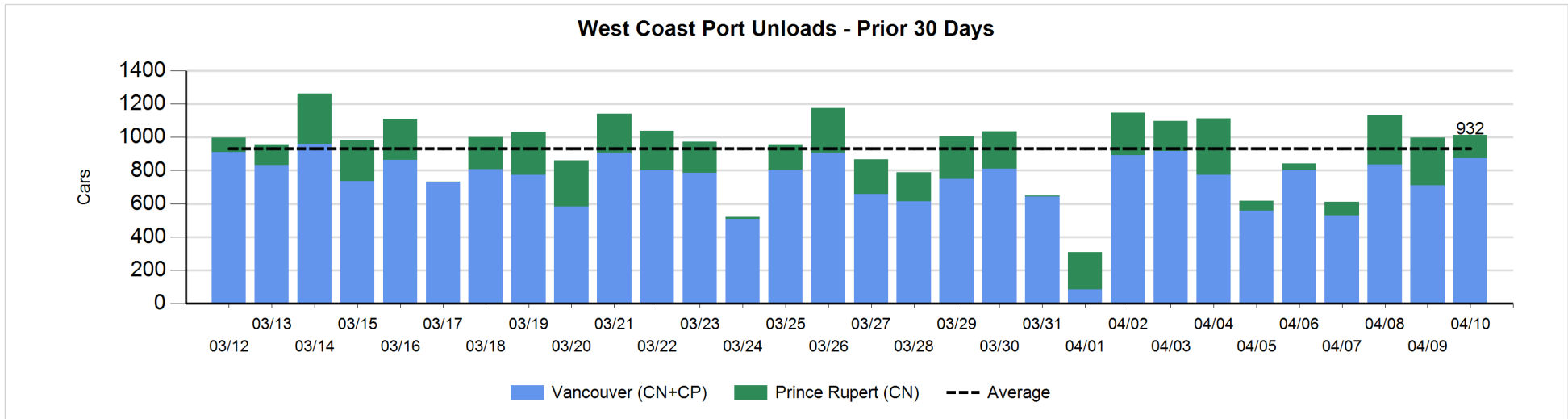
**Change in Loads Not Moving 48 Hours or More - 4/10/2018**

	E Canada	Prince Rupert	Thunder Bay	USA/MEX	Vancouver	Total
<b>CN</b>						
Origin	-1	30	-1	-25	-14	-11
Enroute	28	-2	-4	7	-51	-22
Destination	16	-14	46	-4	46	90
	43	14	41	-22	-19	57
<b>CP</b>						
Origin	-1		-9	-53	-305	-368
Enroute	0		-6	21	1	16
Destination			-37		5	-32
	-1		-52	-32	-299	-384
<b>US Rail / Short Line</b>						
Origin						
Enroute	0			-3		-3
Destination	-16			-19	10	-25
	-16			-22	10	-28



Port Unloads - 4/10/2018

	Prince Rupert	Vancouver	West Coast Total	Thunder Bay	Total
CN	140	408	548	254	802
CP		464	464	108	572
	140	872	1,012	362	1,374





**Port Terminal Status**

**Vancouver**

Daily Activity for 4/10/2018

	Cars Arrived	Cars Received in Interchange	Cars Delivered in Interchange	Cars Placed for Unloading	Loads on Wheels at Destination As of 4/10/2018
CN	466	151	83	463	709
CP	527	78	151	460	462
SRY		5		1	48

**Port Unloads**

	04/10	04/09	Week To Date	Last Week
CN	408	413	821	2,547
CP	464	299	763	2,764
SRY	15	3	18	62

**Age Profile of Loaded Cars Waiting Placement for Unloading**

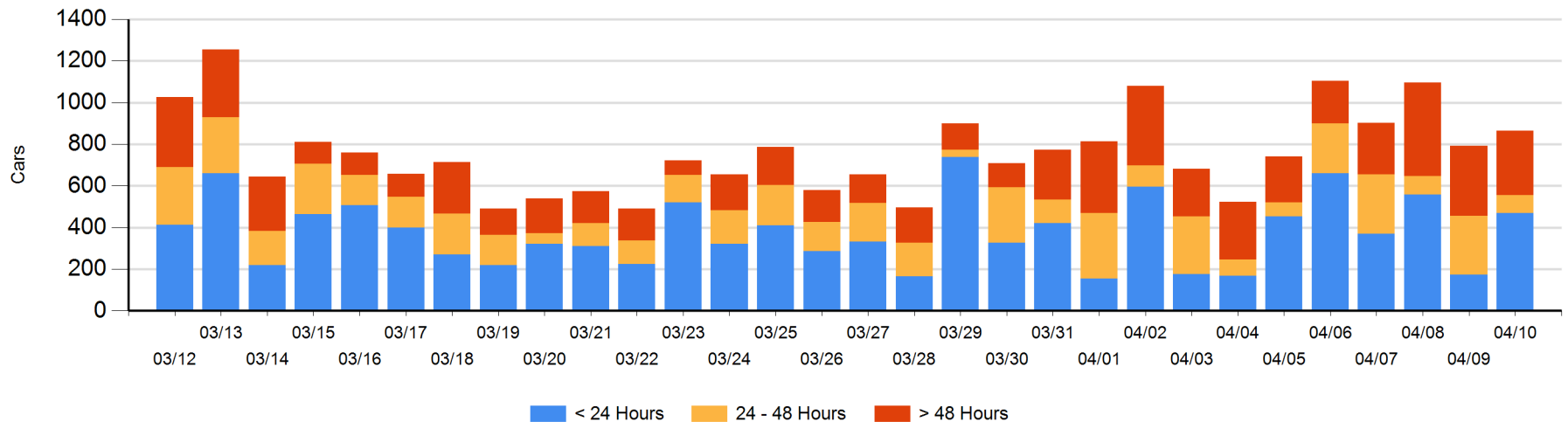
**Today**

	< 24 Hrs	24 - 48 Hrs	> 48-72 Hrs	> 72 Hrs	Total On Hand
CN	274	48	96	90	508
CP	195	38	60	63	356
SRY					0

**Change in Last 24 Hours**

	< 24 Hrs	24-48 Hrs	48 - 72 Hrs	> 72 Hrs
CN	195	-48	50	-101
CP	101	-150	60	-36
SRY				

**Loaded Cars on Hand Vancouver Waiting for Placement - Last 30 Days All Railways**



**Port Terminal Status**

**Prince Rupert**

Daily Activity for 4/10/2018

	Cars Arrived	Cars Received in Interchange	Cars Delivered in Interchange	Cars Placed for Unloading	Loads on Wheels at Destination As of 4/10/2018
CN	96			96	43

**Port Unloads**

	04/10	04/09	Week To Date	Last Week
CN	140	286	426	1,245

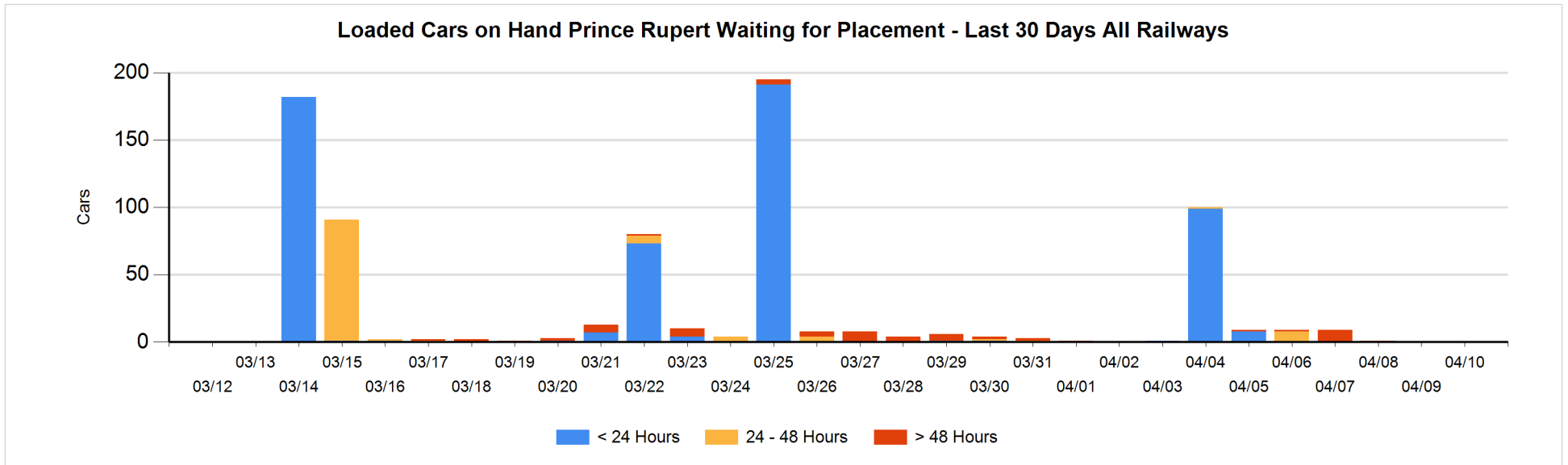
**Age Profile of Loaded Cars Waiting Placement for Unloading**

**Today**

	< 24 Hrs	24 - 48 Hrs	> 48-72 Hrs	> 72 Hrs	Total On Hand
CN					0

**Change in Last 24 Hours**

	< 24 Hrs	24-48 Hrs	48 - 72 Hrs	> 72 Hrs
CN				



**Port Terminal Status**

**Thunder Bay**

Daily Activity for 4/10/2018

	Cars Arrived	Cars Received in Interchange	Cars Delivered in Interchange	Cars Placed for Unloading	Loads on Wheels at Destination As of 4/10/2018
CN	36			46	148
CP	235			128	260

**Port Unloads**

	04/10	04/09	Week To Date	Last Week
CN	254	184	438	296
CP	108	125	233	854

**Age Profile of Loaded Cars Waiting Placement for Unloading**

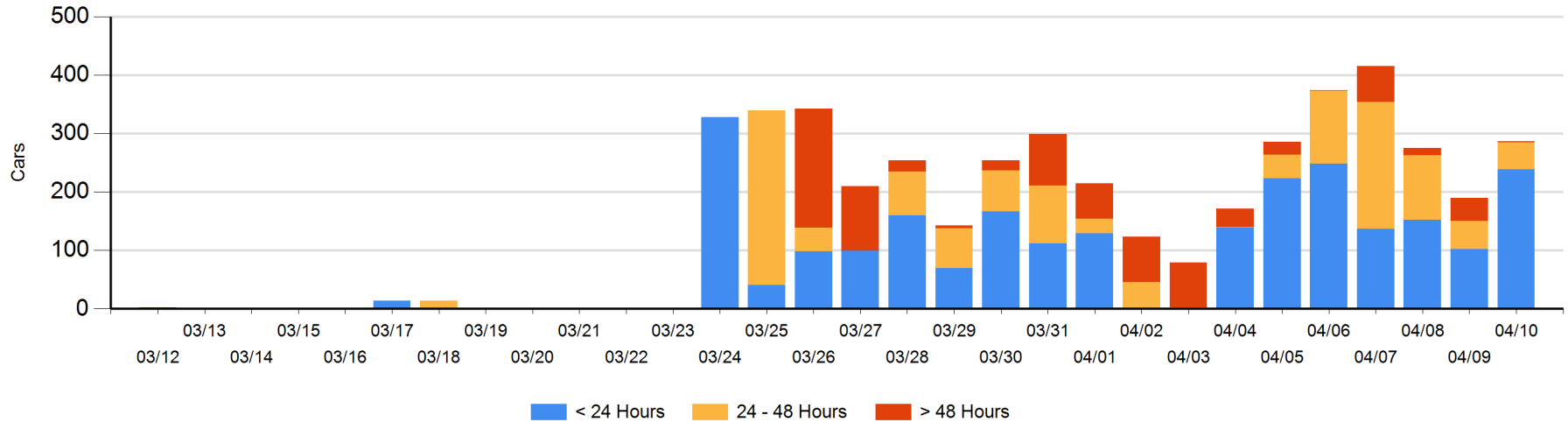
**Today**

	< 24 Hrs	24 - 48 Hrs	> 48-72 Hrs	> 72 Hrs	Total On Hand
CN	4	46			50
CP	235			2	237

**Change in Last 24 Hours**

	< 24 Hrs	24-48 Hrs	48 - 72 Hrs	> 72 Hrs
CN	-42	32		
CP	179	-34	-38	0

Loaded Cars on Hand Thunder Bay Waiting for Placement - Last 30 Days All Railways



## Measurement Definitions

Loads on Wheels	<p>Count of loaded rail cars including all rail cars that have been released loaded at origin and have not been reported by the railway as unloaded at destination.</p> <p>Counts include all rail cars (hopper cars and boxcars) moving within a pipeline.</p>
Loads Not Moving	<p>Loaded rail cars for which the railways have not reported a movement event for 48 hours or more whether the rail car is at origin, enroute or at destination.</p>
Port Unloads	<p>Count of rail cars reported by railways as unloaded at the western port destinations of Vancouver, Prince Rupert and Thunder Bay.</p> <p>Unload counts include all rail cars (hopper cars and boxcars) unloaded by all receivers including major port terminals, transloaders and other receivers.</p>
Cars Arrived	<p>Count of rail cars reported as arrived at the destination railway terminal.</p>
Cars Received in Interchange	<p>Count of rail cars received in interchange by each railway within a destination railway terminal. Interchange activity is tracked for the Vancouver and Thunder Bay pipelines as applicable.</p>
Cars Delivered in Interchange	<p>Count of rail cars delivered in interchange by each railway within a destination railway terminal. Interchange activity is tracked for the Vancouver and Thunder Bay pipelines as applicable.</p>
Cars Placed for Unloading	<p>Count of rail cars reported by the railways as placed loaded at the receiver's facility for unloading.</p>
Loads on Wheels at Destination	<p>Count of rail cars that remain under load within the destination railway terminal including rail cars that have been reported as placed for unloading but not yet reported as unloaded.</p>
Waiting Placement for Unloading	<p>Count of rail cars that have been reported as arrived at the destination railway terminal but not reported as placed for unloading by the railway.</p> <p>For the Ports of Vancouver, Prince Rupert and Thunder Bay the count of rail cars waiting placement for unloading is categorized by age – i.e. the elapsed time from arrival at destination to the current report date.</p>