

Note: Effective with the report for November 27, 2017 the Daily Network Status Report reflects performance and data for the prior day removing the 24 hour lag time which was in place for reporting previously.

Loads on Wheels

- System wide loads on wheels decreased in the prior 24 hours for the 6th time in the prior 7 days - loads now at 10,777 - the lowest level in the prior 10 days and 2% below the trailing 30 day average
- In total loads on wheels declined by 379 cars reflecting a nominal increase in CN volumes (+68) and a decline in CP volumes (-326) - traffic moving on US carriers also declined.
- CN volumes declined in the Thunder Bay (-52) and Eastern Canada (-62) corridors offset by increases in the Prince Rupert (+103) and Vancouver (+79) corridors. System wide CN loads on wheels are now at 5,799 - 5% higher than the trailing 30 day average.
- CP volumes declined primarily in the Vancouver corridor (-451) offset by an increase in traffic in the Thunder Bay corridor (+132). System wide loads at 4,685 - the lowest level in the prior 10 days and 8% below the trailing 30 day average.
- Vancouver now at 5,652 - lowest level in the prior 3 weeks and 16% below the trailing 30 day average, Prince Rupert at 1,073 - above 1,000 for only the 2nd time in the prior 2 weeks - and Thunder Bay at 2,486 - highest level in the prior 30 days and 54% higher than the trailing 30 day average.

Loads Not Moving

- The count of loaded cars not moving on CN and CP for 48 hours or more increased by 350 cars in the prior 24 hours; total cars on CN and CP not moving for 48 hours now at 2,998.
- CN
 - The count of cars not moving increased by 288 cars on a net basis in the prior 24 hours - loads on wheels now idle for 48 hours or more at 1,062.
 - Counts increased principally in the Vancouver and Prince Rupert corridors offset by slightly lower counts in the Eastern Canada corridor.
 - 25% of cars (261) are dwelling at origin locations.
- CP
 - CP counts increased slightly (+62 cars) reflecting a significant increase in the Thunder Bay corridor (+203) offset by declines in all other corridors - idle cars now at 1,936.
 - The majority of cars (77%) continue to dwell at origin - 1,501 cars.

Port Performance

- CN and CP unloaded a total of 1,018 cars at the three western ports. Week 18 unloads totaled 8,193 an increase of 1,700 from the prior week.
- As compared to the prior week, unloads increased at Vancouver (+1,482) and Thunder Bay (+763) with Prince Rupert lagging at 540 fewer unloads. CN accounted for the majority of the increase at Vancouver nearly doubling last week's performance while CP doubled its performance at Thunder Bay.
- Vancouver
 - Total of 677 cars reported unloaded by CN and CP at the Port of Vancouver; CN - 458 and CP - 219
 - There are currently 739 cars on hand at Vancouver waiting placement for unloading.
- Thunder Bay
 - Total of 244 cars reported unloaded by CN and CP in the prior 24 hours
 - Cars at Thunder Bay waiting placement now at 652 - 83% CP.

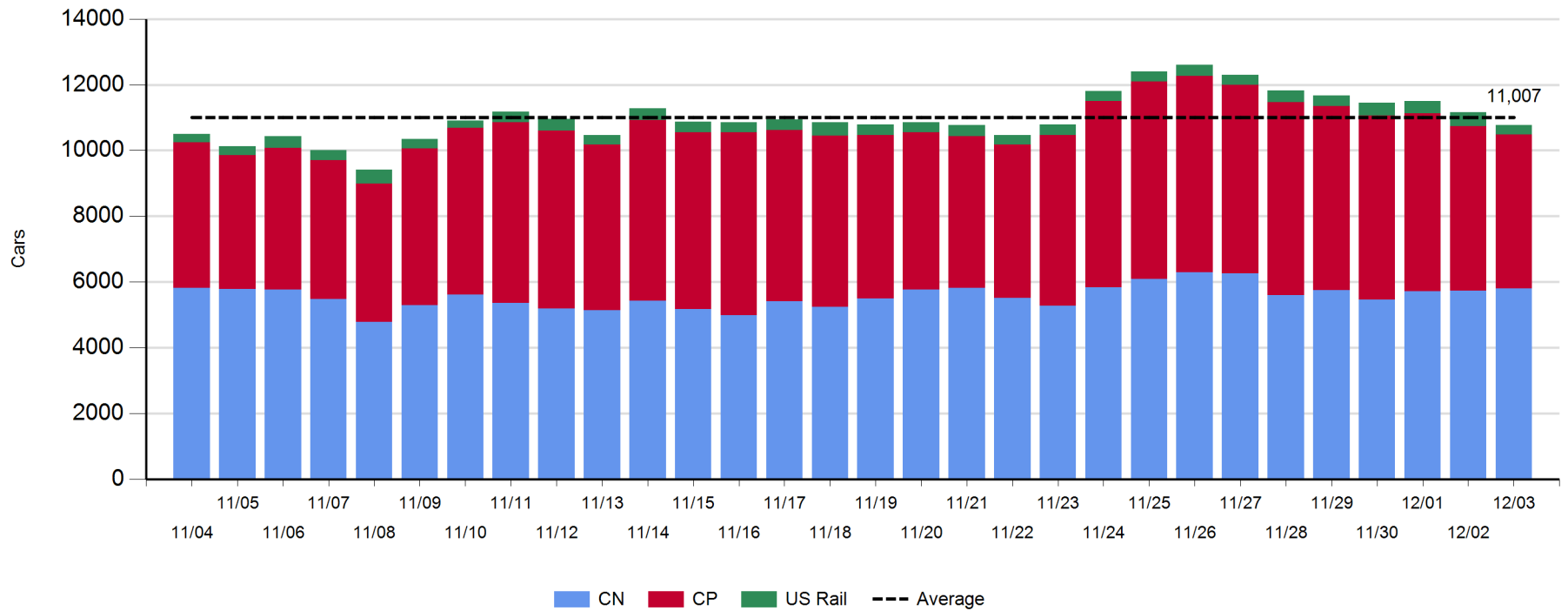
Daily Loads on Wheels - 12/3/2017

	E Canada	Prince Rupert	Thunder Bay	USA/MEX	Vancouver	Total
CN	481	1,073	620	373	3,252	5,799
CP	105		1,866	340	2,374	4,685
Short Line	57				26	83
US Rail				210		210
	643	1,073	2,486	923	5,652	10,777

Change in Loads on Wheels - Prior 24 Hours

	E Canada	Prince Rupert	Thunder Bay	USA/MEX	Vancouver	Total
CN	-62		103	-52	0	79
CP	-7		132	0	-451	-326
Short Line	6				-1	5
US Rail				-126		-126
	-63	103	80	-126	-373	-379

Loads on Wheels - Prior 30 Days



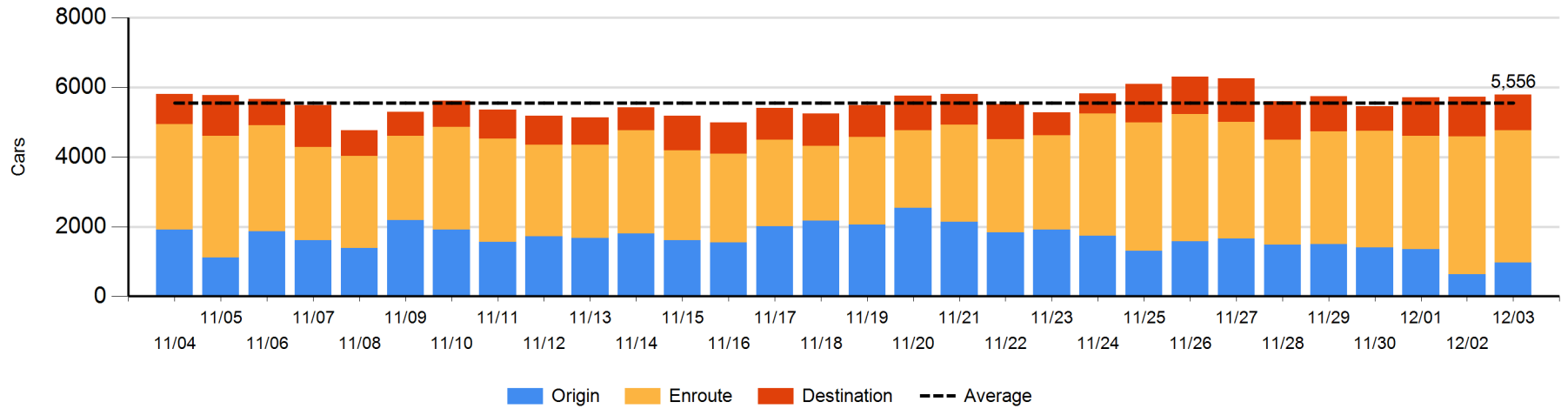
Daily Loads on Wheels By Pipeline Location - 12/3/2017

	E Canada	Prince Rupert	Thunder Bay	USA/MEX	Vancouver	Total
CN						
Origin	103	201	202	51	418	975
Enroute	290	685	200	302	2,319	3,796
Destination	88	187	218	20	515	1,028
	481	1,073	620	373	3,252	5,799
CP						
Origin	5		1,040	80	887	2,012
Enroute	84		280	247	1,160	1,771
Destination	16		546	13	327	902
	105		1,866	340	2,374	4,685
US Rail / Short Line						
Origin						
Enroute	31			72		103
Destination	26			138	26	190
	57			210	26	293

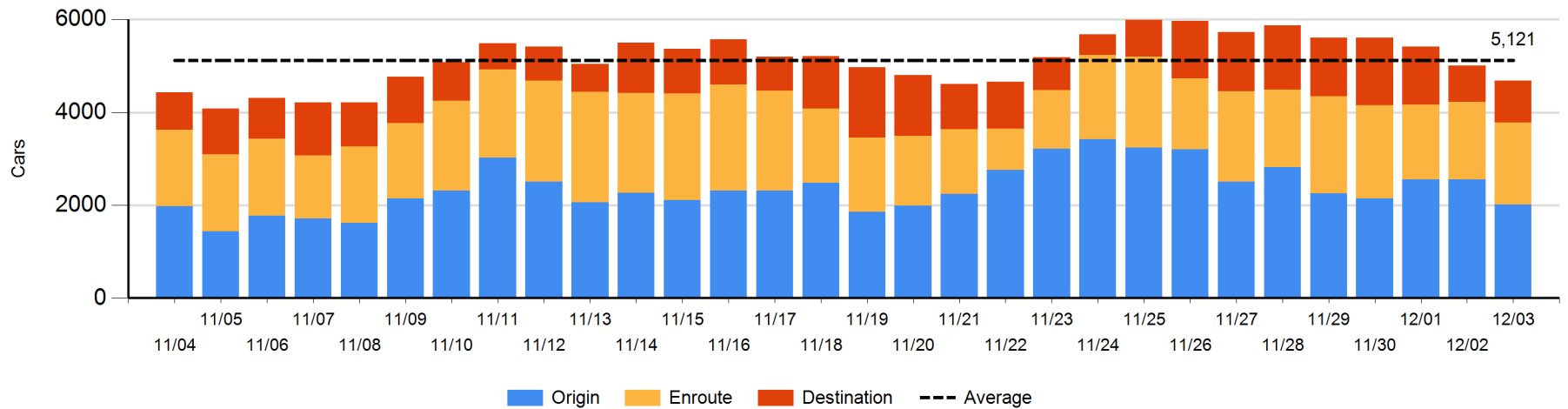
Change in Daily Loads on Wheels By Pipeline Location - Prior 24 Hours

	E Canada	Prince Rupert	Thunder Bay	USA/MEX	Vancouver	Total
CN						
Origin	-2	99	101	-12	164	350
Enroute	-5	27	-159	11	-41	-167
Destination	-55	-23	6	1	-44	-115
	-62	103	-52	0	79	68
CP						
Origin	2		2	-151	-394	-541
Enroute	-22		0	138	-18	98
Destination	13		130	13	-39	117
	-7		132	0	-451	-326
US Rail / Short Line						
Origin						
Enroute	6			2		8
Destination	0			-128	-1	-129
	6			-126	-1	-121

CN Loads on Wheels by Pipeline Location - 12/3/2017



CP Loads on Wheels by Pipeline Location - 12/3/2017

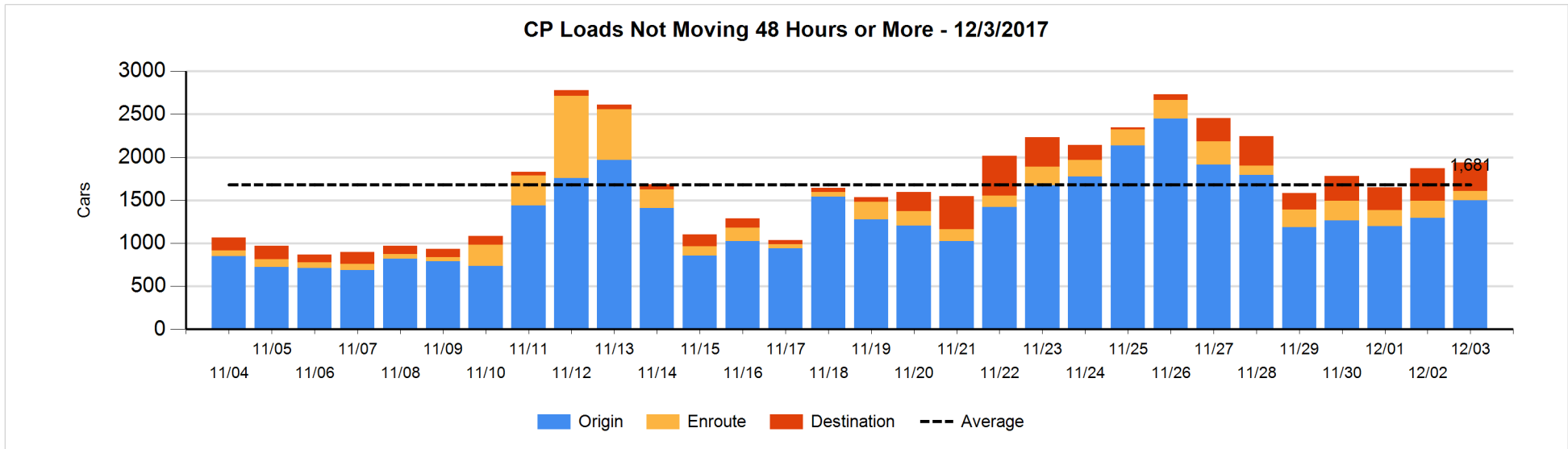
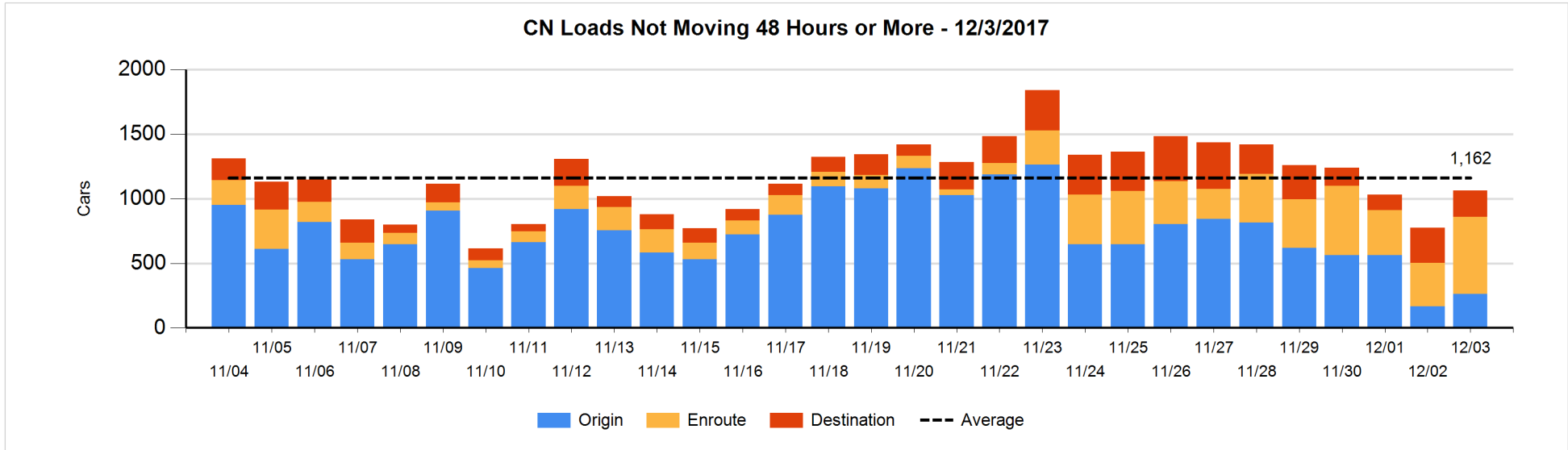


Loads Not Moving 48 Hours or More - 12/3/2017

	E Canada	Prince Rupert	Thunder Bay	USA/MEX	Vancouver	Total
CN						
Origin		99		51	111	261
Enroute	38	13		14	534	599
Destination	73	10	4	13	102	202
	111	122	4	78	747	1062
CP						
Origin	3		636	28	834	1501
Enroute	7			5	97	109
Destination			316		10	326
	10		952	33	941	1936
US Rail / Short Line						
Origin						
Enroute				50		50
Destination	26			106	10	142
	26			156	10	192

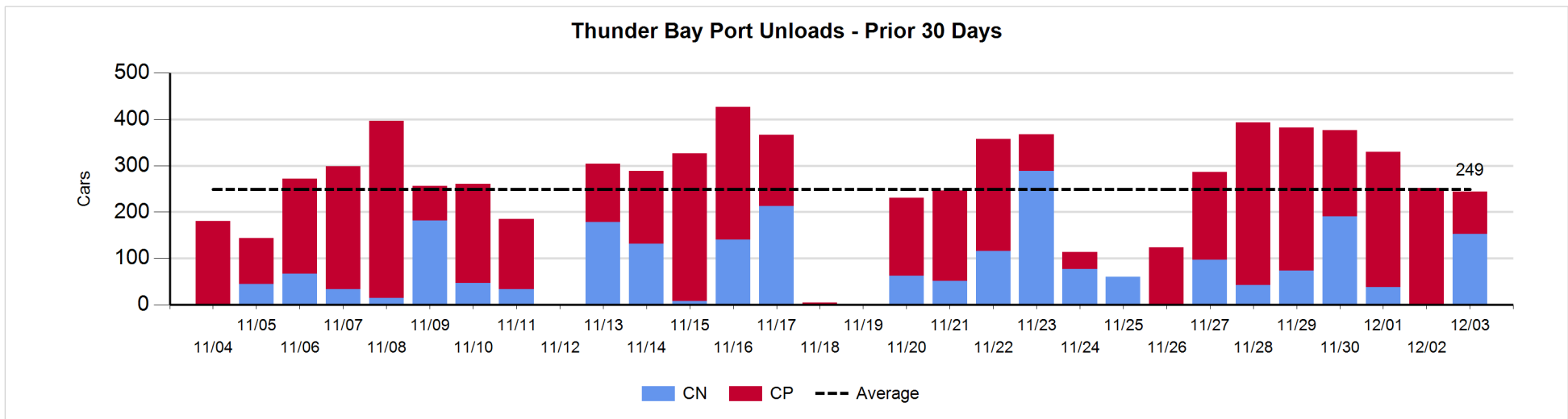
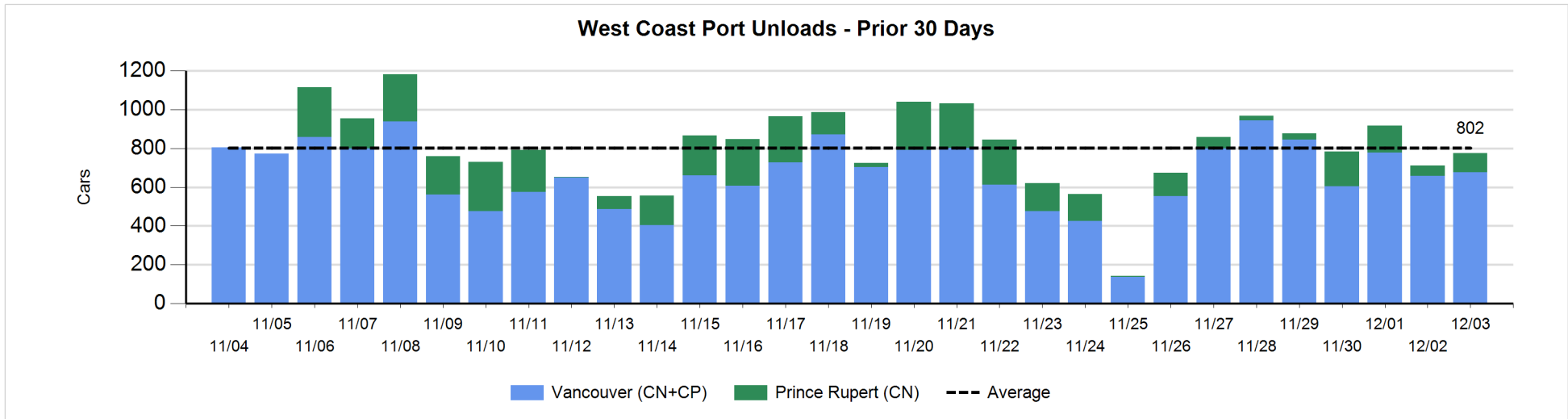
Change in Loads Not Moving 48 Hours or More - 12/3/2017

	E Canada	Prince Rupert	Thunder Bay	USA/MEX	Vancouver	Total
CN						
Origin		95		39	-39	95
Enroute	-24	-2		9	279	262
Destination	-63	6	-4	2	-10	-69
	-87	99	-4	50	230	288
CP						
Origin	2		147	-52	109	206
Enroute	-10			-22	-57	-89
Destination			56		-111	-55
	-8		203	-74	-59	62
US Rail / Short Line						
Origin						
Enroute				35		35
Destination	24			33	5	62
	24			68	5	97



Port Unloads - 12/3/2017

	Prince Rupert	Vancouver	West Coast Total	Thunder Bay	Total
CN	97	458	555	153	708
CP		219	219	91	310
	97	677	774	244	1,018



Port Terminal Status

Vancouver

Daily Activity for 12/3/2017

	Cars Arrived	Cars Received in Interchange	Cars Delivered in Interchange	Cars Placed for Unloading	Loads on Wheels at Destination As of 12/3/2017
CN	184	230		233	515
CP	386		232	80	327
SRY		2		1	26

Port Unloads

	12/03	12/02	Week To Date	Last Week
CN	458	294	2,719	1,407
CP	219	363	2,584	2,386
SRY	1	1	41	69

Age Profile of Loaded Cars Waiting Placement for Unloading

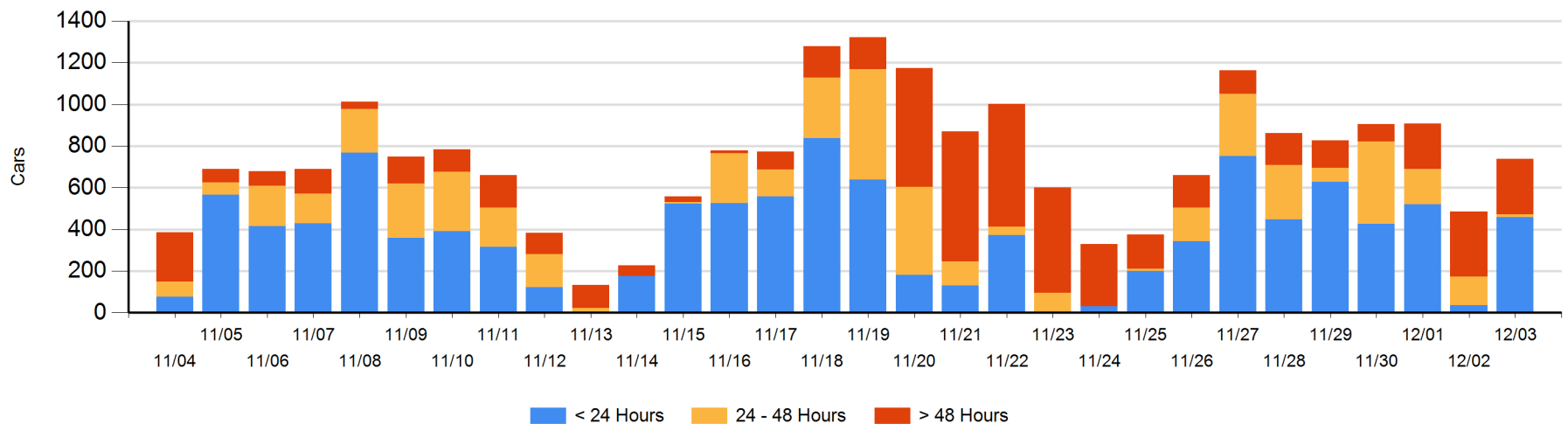
Today

	< 24 Hrs	24 - 48 Hrs	> 48-72 Hrs	> 72 Hrs	Total On Hand
CN	184	1	61	83	329
CP	275	13	18	104	410
SRY					0

Change in Last 24 Hours

	< 24 Hrs	24-48 Hrs	48 - 72 Hrs	> 72 Hrs
CN	183	-69	9	-9
CP	240	-53	-98	51
SRY				

Loaded Cars on Hand Vancouver Waiting for Placement - Last 30 Days All Railways



Port Terminal Status

Prince Rupert

Daily Activity for 12/3/2017

Cars Arrived	Cars Received in Interchange	Cars Delivered in Interchange	Cars Placed for Unloading	Loads on Wheels at Destination As of 12/3/2017
				187

Port Unloads

	12/03	12/02	Week To Date	Last Week
CN	97	55	586	1,126

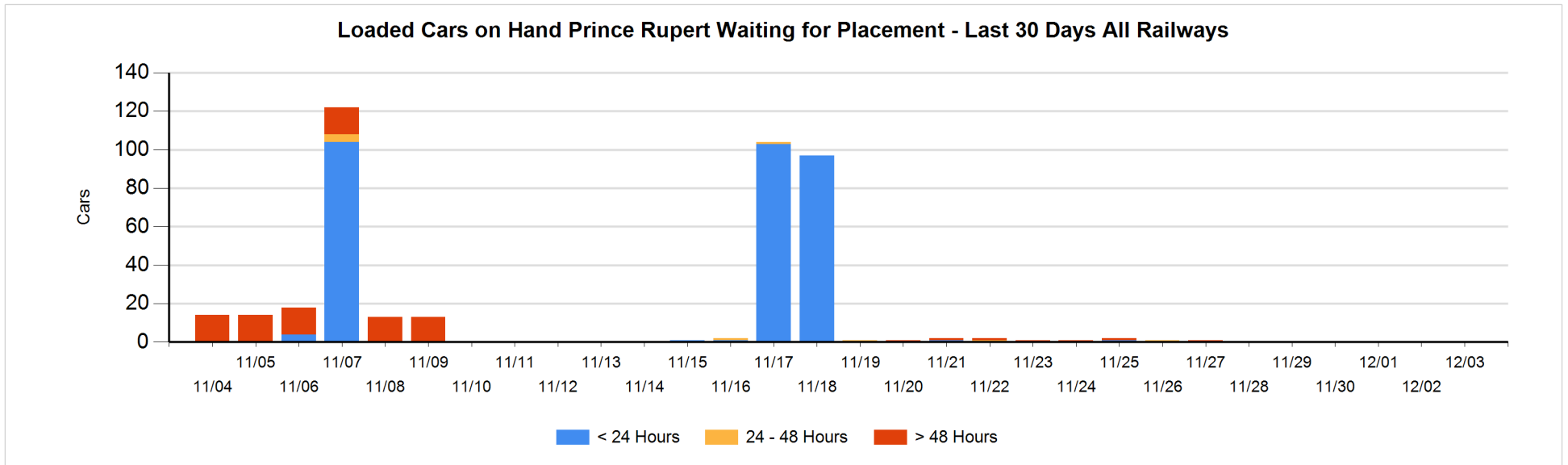
Age Profile of Loaded Cars Waiting Placement for Unloading

Today

< 24 Hrs	24 - 48 Hrs	> 48-72 Hrs	> 72 Hrs	Total On Hand
				0

Change in Last 24 Hours

< 24 Hrs	24-48 Hrs	48 - 72 Hrs	> 72 Hrs



Port Terminal Status

Thunder Bay

Daily Activity for 12/3/2017

	Cars Arrived	Cars Received in Interchange	Cars Delivered in Interchange	Cars Placed for Unloading	Loads on Wheels at Destination As of 12/3/2017
CN	159			68	218
CP	222			63	546

Port Unloads

	12/03	12/02	Week To Date	Last Week
CN	153	1	596	654
CP	91	251	1,667	846

Age Profile of Loaded Cars Waiting Placement for Unloading

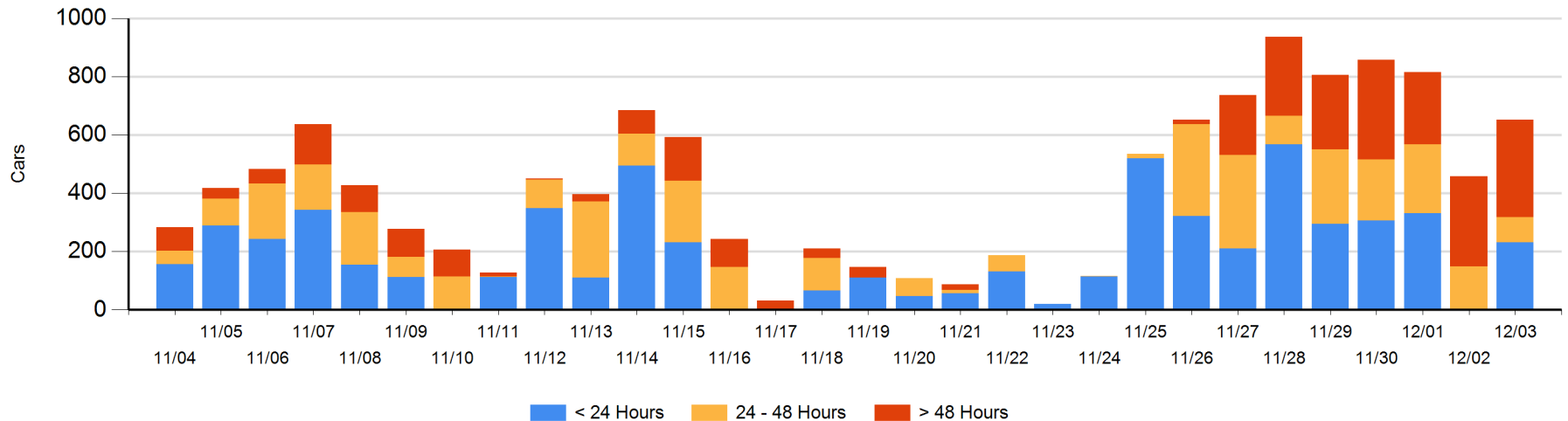
Today

	< 24 Hrs	24 - 48 Hrs	> 48-72 Hrs	> 72 Hrs	Total On Hand
CN	10	84	14	1	109
CP	222	2	133	186	543

Change in Last 24 Hours

	< 24 Hrs	24-48 Hrs	48 - 72 Hrs	> 72 Hrs
CN	10	70	14	-3
CP	220	-131	8	6

Loaded Cars on Hand Thunder Bay Waiting for Placement - Last 30 Days All Railways



Measurement Definitions

Loads on Wheels	<p>Count of loaded rail cars including all rail cars that have been released loaded at origin and have not been reported by the railway as unloaded at destination.</p> <p>Counts include all rail cars (hopper cars and boxcars) moving within a pipeline.</p>
Loads Not Moving	<p>Loaded rail cars for which the railways have not reported a movement event for 48 hours or more whether the rail car is at origin, enroute or at destination.</p>
Port Unloads	<p>Count of rail cars reported by railways as unloaded at the western port destinations of Vancouver, Prince Rupert and Thunder Bay.</p> <p>Unload counts include all rail cars (hopper cars and boxcars) unloaded by all receivers including major port terminals, transloaders and other receivers.</p>
Cars Arrived	<p>Count of rail cars reported as arrived at the destination railway terminal.</p>
Cars Received in Interchange	<p>Count of rail cars received in interchange by each railway within a destination railway terminal. Interchange activity is tracked for the Vancouver and Thunder Bay pipelines as applicable.</p>
Cars Delivered in Interchange	<p>Count of rail cars delivered in interchange by each railway within a destination railway terminal. Interchange activity is tracked for the Vancouver and Thunder Bay pipelines as applicable.</p>
Cars Placed for Unloading	<p>Count of rail cars reported by the railways as placed loaded at the receiver's facility for unloading.</p>
Loads on Wheels at Destination	<p>Count of rail cars that remain under load within the destination railway terminal including rail cars that have been reported as placed for unloading but not yet reported as unloaded.</p>
Waiting Placement for Unloading	<p>Count of rail cars that have been reported as arrived at the destination railway terminal but not reported as placed for unloading by the railway.</p> <p>For the Ports of Vancouver, Prince Rupert and Thunder Bay the count of rail cars waiting placement for unloading is categorized by age – i.e. the elapsed time from arrival at destination to the current report date.</p>