

Note: Effective with the report for November 27, 2017 the Daily Network Status Report reflects performance and data for the prior day removing the 24 hour lag time which was in place for reporting previously.

Loads on Wheels

- System wide loads on wheels unchanged in the prior 24 hours - loads now at 11,076 - in line with the trailing 30 day average
- In total loads on wheels decreased by 1 car reflecting little change in either CN or CP volumes.
- CN volumes declined in 3 of 5 corridors led by Prince Rupert (-126) offset by an increase in traffic to Vancouver (+164). System wide CN loads on wheels are now at 5,879 - 6% higher than the trailing 30 day average.
- CP volumes increased in the Thunder Bay corridor (+193) offset by a decline in traffic to Vancouver (-167). System wide loads at 4,881 - 6% below the trailing 30 day average.
- Vancouver now at 5,944, Prince Rupert at 991 - below 1,000 for the 12th time in the prior 15 days - and Thunder Bay at 2,643 - the highest level in the prior 30 days and 54% higher than the trailing 30 day average.

Loads Not Moving

- The count of loaded cars not moving on CN and CP for 48 hours or more declined significantly for the 2nd consecutive day (-478) in the prior 24 hours; total cars on CN and CP not moving for 48 hours now at 1,813.
- CN
 - The count of cars not moving declined by 66 cars on a net basis in the prior 24 hours - loads on wheels now idle for 48 hours or more at 827 with 68% of these cars destined to Vancouver .
 - Principal change is in the Vancouver corridor (-60) with nominal changes in other corridors.
 - 18% of cars (143) are dwelling at origin locations while the majority of cars (557) are dwelling on line - of these 88% are destined to Vancouver of which 90% are dwelling at locations west of Jasper.
- CP
 - CP counts declined significantly for the 2nd consecutive day (-412) reflecting substantial declines in both the Thunder Bay (-260) and Vancouver (-150) corridors - idle cars now at 986; the lowest level in the prior 3 weeks.
 - The majority of cars (87%) continue to dwell at origin - 854 cars. This consists principally of 370 cars destined to Vancouver and 426 cars destined to Thunder Bay.

Port Performance

- CN and CP unloaded a total of 960 cars at the three western ports 17% lower than average Tuesday performance in the prior 30 days and 30% lower than the same day last week. Through the first 2 days of week 19 western port unloads are 11% behind last week's pace.
- Prince Rupert continues to track ahead of last week's pace while Vancouver and Thunder Bay unloads are 25% and 29% respectively lower than last week.
- Vancouver
 - Total of 678 cars reported unloaded by CN and CP at the Port of Vancouver; CN - 302 and CP - 376
 - There are currently 934 cars on hand at Vancouver waiting placement for unloading -133 of these cars arrived at Vancouver more than 72 hours ago.
- Thunder Bay
 - Total of 149 cars reported unloaded by CN and CP in the prior 24 hours
 - Cars at Thunder Bay waiting placement now at 765; Of these, 132 arrived at Thunder Bay more than 72 hours ago.

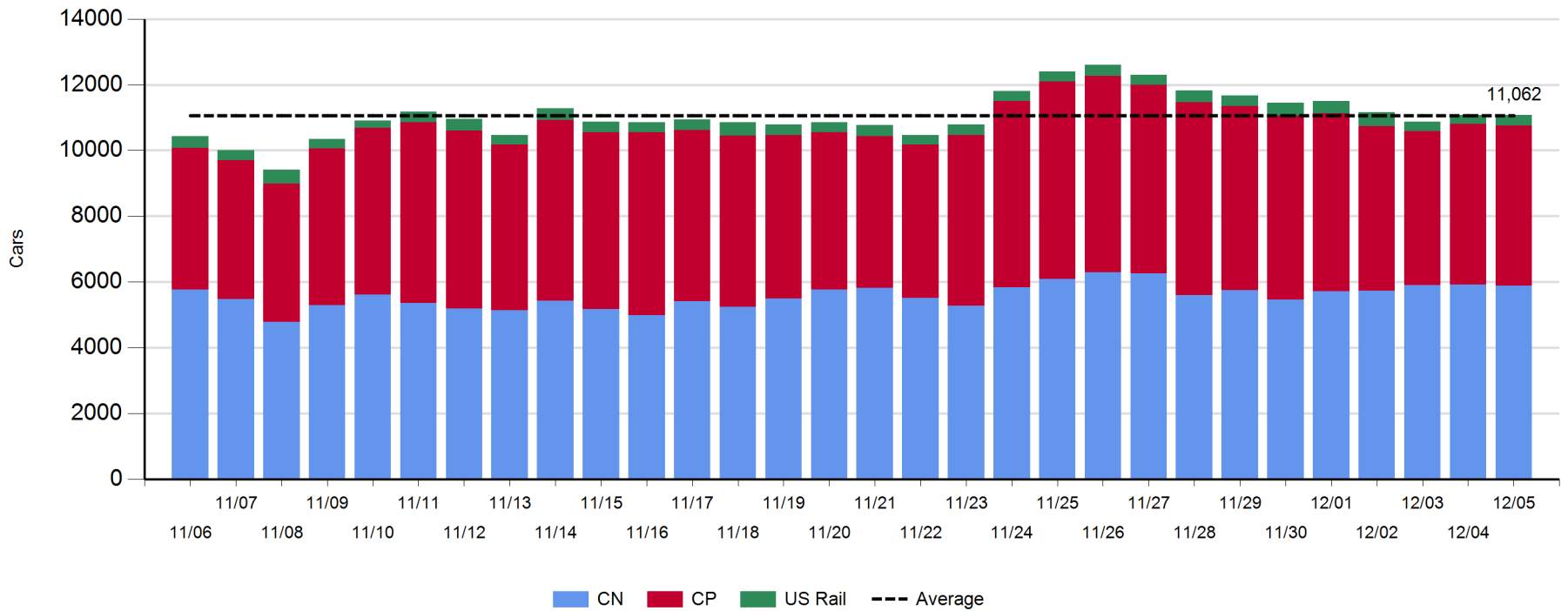
Daily Loads on Wheels - 12/5/2017

	E Canada	Prince Rupert	Thunder Bay	USA/MEX	Vancouver	Total
CN	399	991	699	353	3,437	5,879
CP	94		1,944	390	2,453	4,881
Short Line	11				54	65
US Rail				251		251
	504	991	2,643	994	5,944	11,076

Change in Loads on Wheels - Prior 24 Hours

	E Canada	Prince Rupert	Thunder Bay	USA/MEX	Vancouver	Total
CN	-61	-126	-23	9	164	-37
CP	-8		193	-29	-167	-11
Short Line	-25				15	-10
US Rail				57		57
	-94	-126	170	37	12	-1

Loads on Wheels - Prior 30 Days

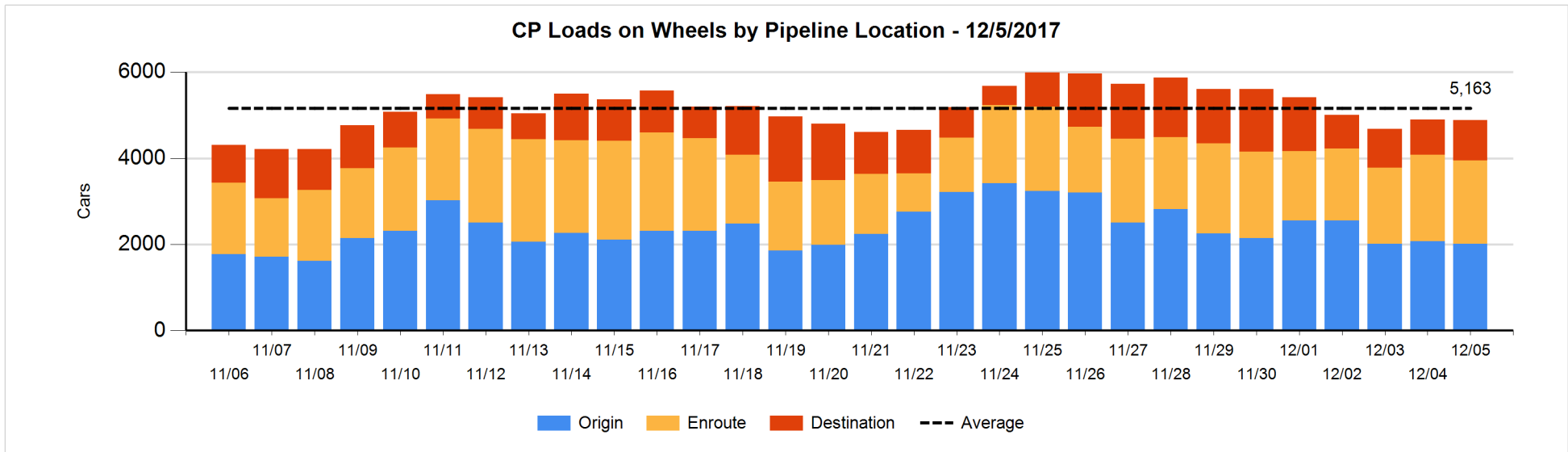
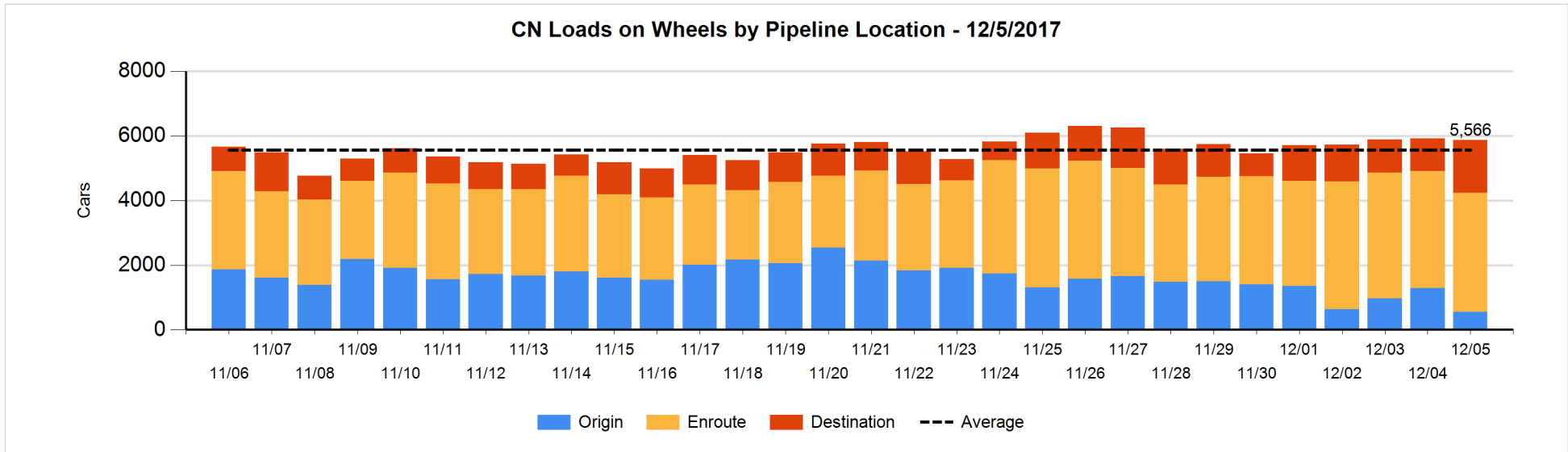


Daily Loads on Wheels By Pipeline Location - 12/5/2017

	E Canada	Prince Rupert	Thunder Bay	USA/MEX	Vancouver	Total
CN						
Origin		102	50	102	298	552
Enroute	253	618	239	232	2,347	3,689
Destination	146	271	410	19	792	1,638
	399	991	699	353	3,437	5,879
CP						
Origin	9		809	57	1,134	2,009
Enroute	70		565	331	970	1,936
Destination	15		570	2	349	936
	94		1,944	390	2,453	4,881
US Rail / Short Line						
Origin						
Enroute	10			149		159
Destination	1			102	54	157
	11			251	54	316

Change in Daily Loads on Wheels By Pipeline Location - Prior 24 Hours

	E Canada	Prince Rupert	Thunder Bay	USA/MEX	Vancouver	Total
CN						
Origin	-26	-346	10	96	-465	-731
Enroute	-32	8	-183	-86	362	69
Destination	-3	212	150	-1	267	625
	-61	-126	-23	9	164	-37
CP						
Origin	4		-160	-104	199	-61
Enroute	-14		291	73	-427	-77
Destination	2		62	2	61	127
	-8		193	-29	-167	-11
US Rail / Short Line						
Origin						
Enroute	-25			59		34
Destination	0			-2	15	13
	-25			57	15	47

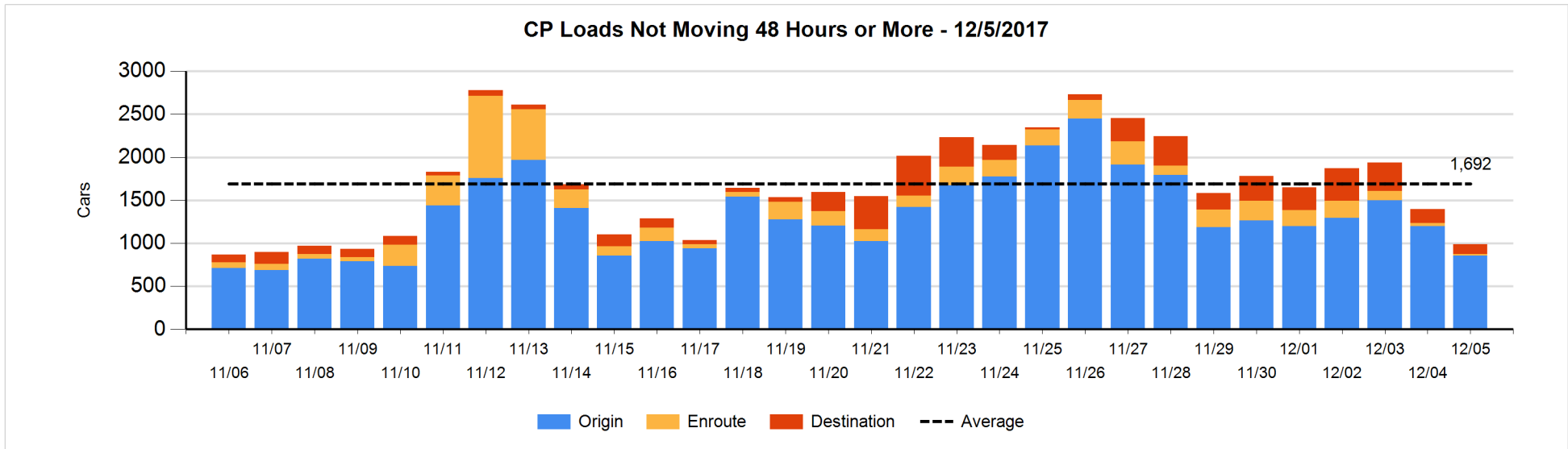
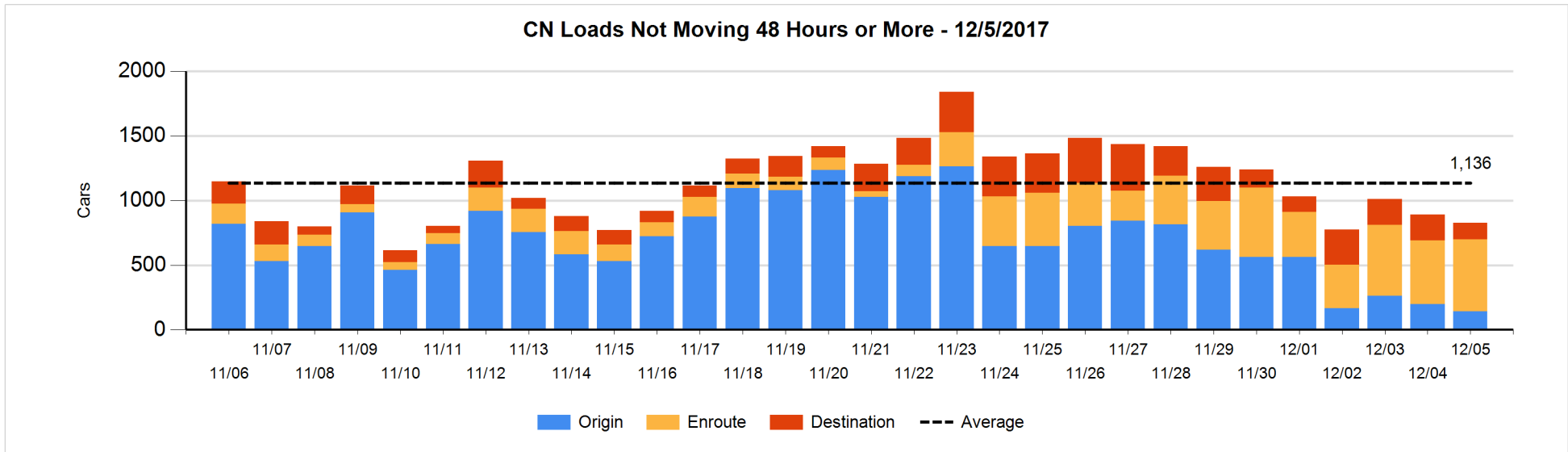


Loads Not Moving 48 Hours or More - 12/5/2017

	E Canada	Prince Rupert	Thunder Bay	USA/MEX	Vancouver	Total
CN						
Origin		99			44	143
Enroute	33	14		21	489	557
Destination	27	10	57	7	26	127
	60	123	57	28	559	827
CP						
Origin	4		426	54	370	854
Enroute	8		1	4	8	21
Destination			109		2	111
	12		536	58	380	986
US Rail / Short Line						
Origin						
Enroute				18		18
Destination	1			47	12	60
	1			65	12	78

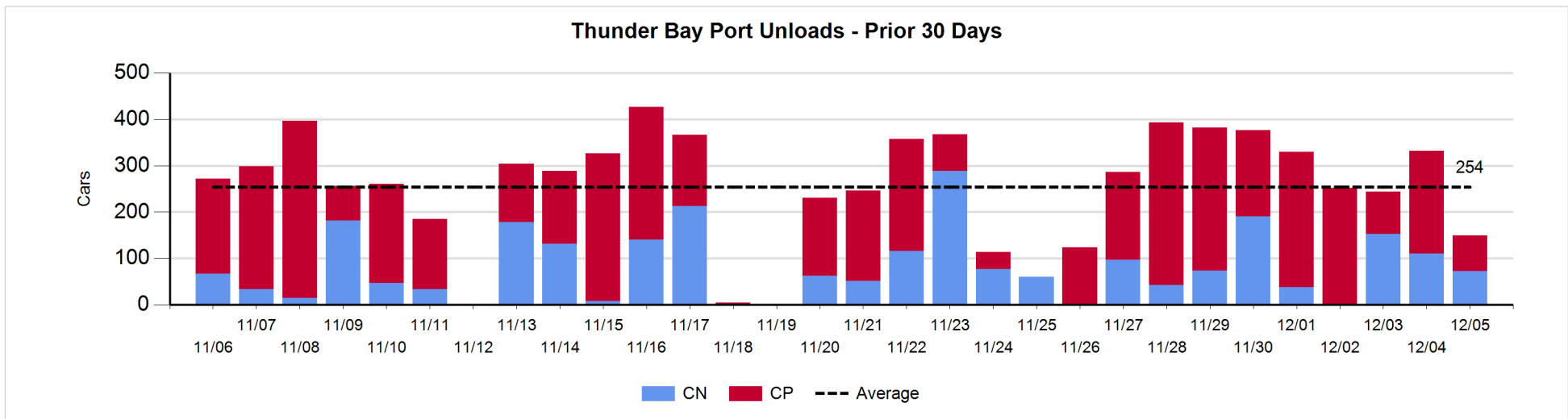
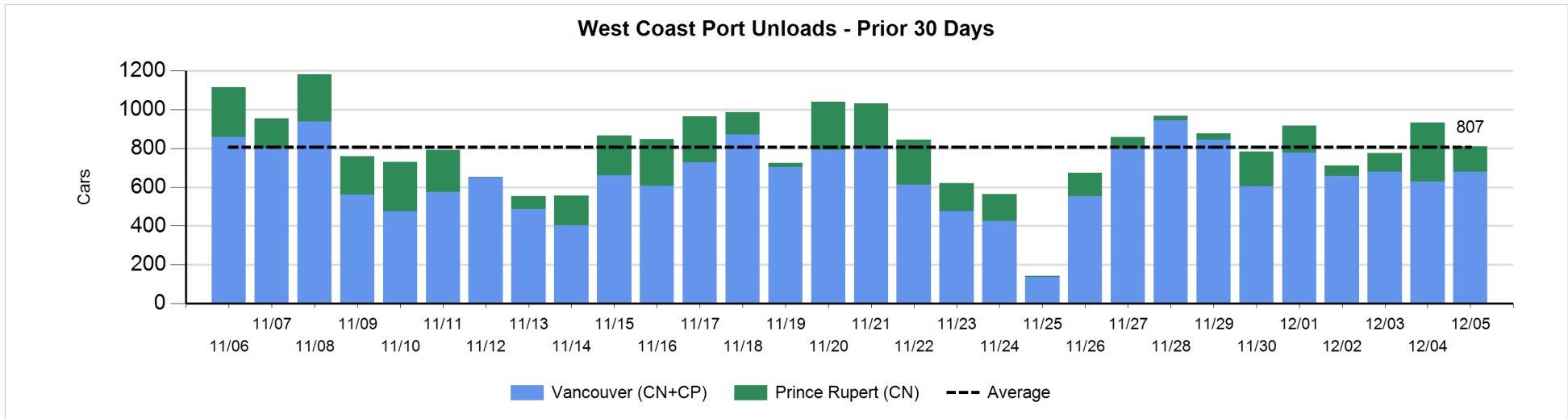
Change in Loads Not Moving 48 Hours or More - 12/5/2017

	E Canada	Prince Rupert	Thunder Bay	USA/MEX	Vancouver	Total
CN						
Origin		0		-1	-54	-55
Enroute	2	-2		9	57	66
Destination	-12	6	-6	-2	-63	-77
	-10	4	-6	6	-60	-66
CP						
Origin	1		-207	-1	-139	-346
Enroute	0		0	-2	-9	-11
Destination			-53		-2	-55
	1		-260	-3	-150	-412
US Rail / Short Line						
Origin						
Enroute	-25			-5		-30
Destination	0			-29	0	-29
	-25			-34	0	-59



Port Unloads - 12/5/2017

	Prince Rupert	Vancouver	West Coast Total	Thunder Bay	Total
CN	133	302	435	73	508
CP		376	376	76	452
	133	678	811	149	960



Port Terminal Status

Vancouver

Daily Activity for 12/5/2017

	Cars Arrived	Cars Received in Interchange	Cars Delivered in Interchange	Cars Placed for Unloading	Loads on Wheels at Destination As of 12/5/2017
CN	367	227	12	395	792
CP	680	12	227	443	349
SRY				3	54

Port Unloads

	12/05	12/04	Week To Date	Last Week
CN	302	363	665	2,719
CP	376	265	641	2,585
SRY	5	9	14	41

Age Profile of Loaded Cars Waiting Placement for Unloading

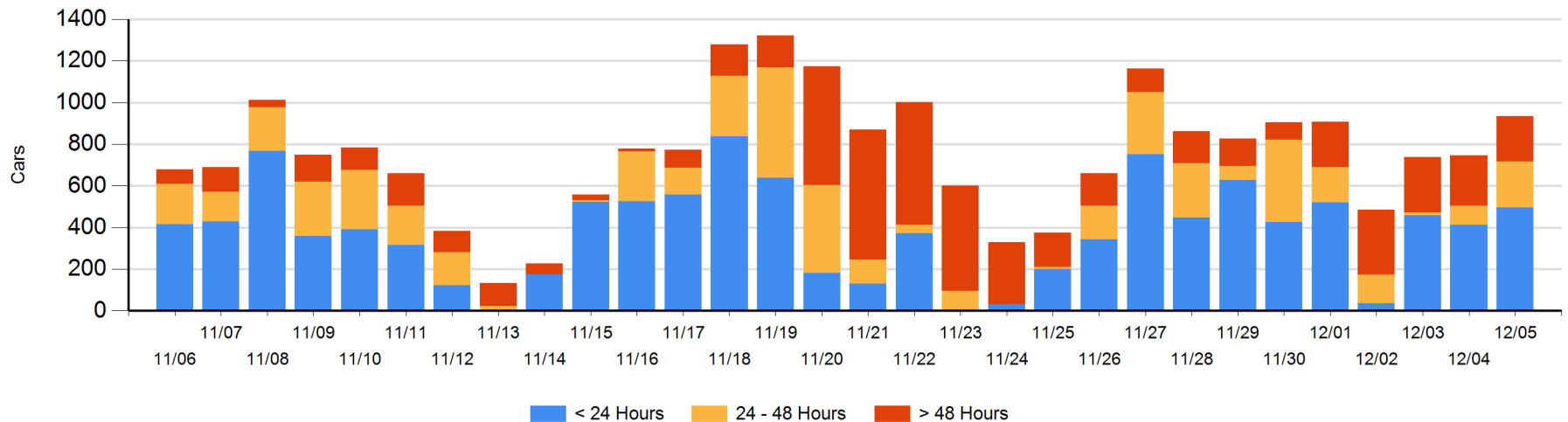
Today

	< 24 Hrs	24 - 48 Hrs	> 48-72 Hrs	> 72 Hrs	Total On Hand
CN	271	193	22	89	575
CP	224	30	61	44	359
SRY					0

Change in Last 24 Hours

	< 24 Hrs	24-48 Hrs	48 - 72 Hrs	> 72 Hrs
CN	-112	171	21	-33
CP	194	-40	48	-62
SRY				

Loaded Cars on Hand Vancouver Waiting for Placement - Last 30 Days All Railways



Port Terminal Status

Prince Rupert

Daily Activity for 12/5/2017

	Cars Arrived	Cars Received in Interchange	Cars Delivered in Interchange	Cars Placed for Unloading	Loads on Wheels at Destination As of 12/5/2017
CN	334			232	271

Port Unloads

	12/05	12/04	Week To Date	Last Week
CN	133	304	437	586

Age Profile of Loaded Cars Waiting Placement for Unloading

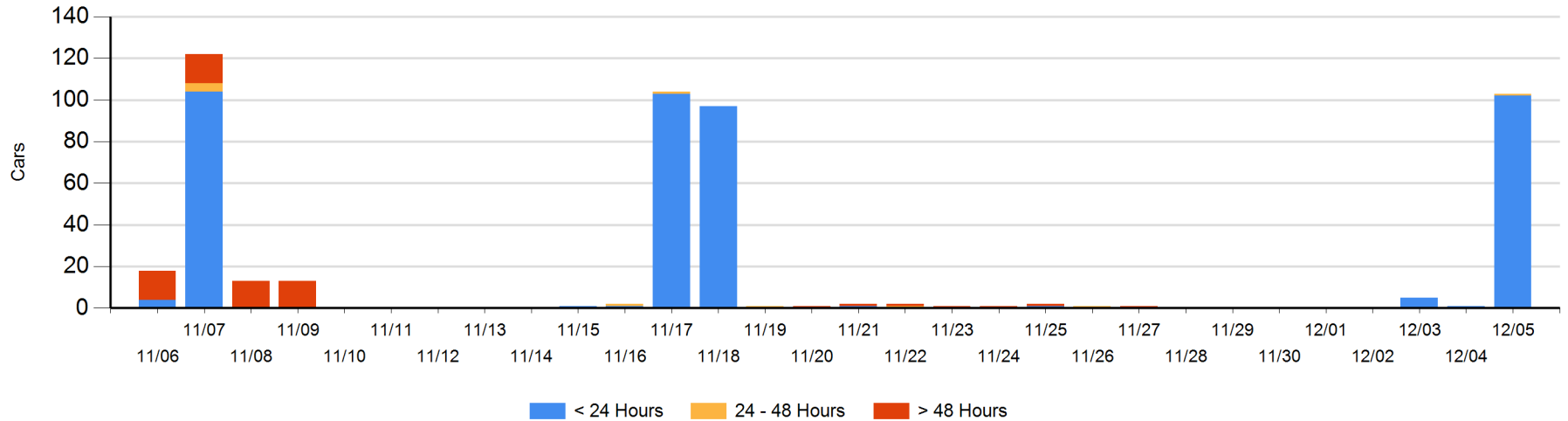
Today

	< 24 Hrs	24 - 48 Hrs	> 48-72 Hrs	> 72 Hrs	Total On Hand
CN	102	1			103

Change in Last 24 Hours

	< 24 Hrs	24-48 Hrs	48 - 72 Hrs	> 72 Hrs
CN	101	1		

Loaded Cars on Hand Prince Rupert Waiting for Placement - Last 30 Days All Railways



Port Terminal Status

Thunder Bay

Daily Activity for 12/5/2017

	Cars Arrived	Cars Received in Interchange	Cars Delivered in Interchange	Cars Placed for Unloading	Loads on Wheels at Destination As of 12/5/2017
CN	223				410
CP	144			191	570

Port Unloads

	12/05	12/04	Week To Date	Last Week
CN	73	110	183	596
CP	76	222	298	1,667

Age Profile of Loaded Cars Waiting Placement for Unloading

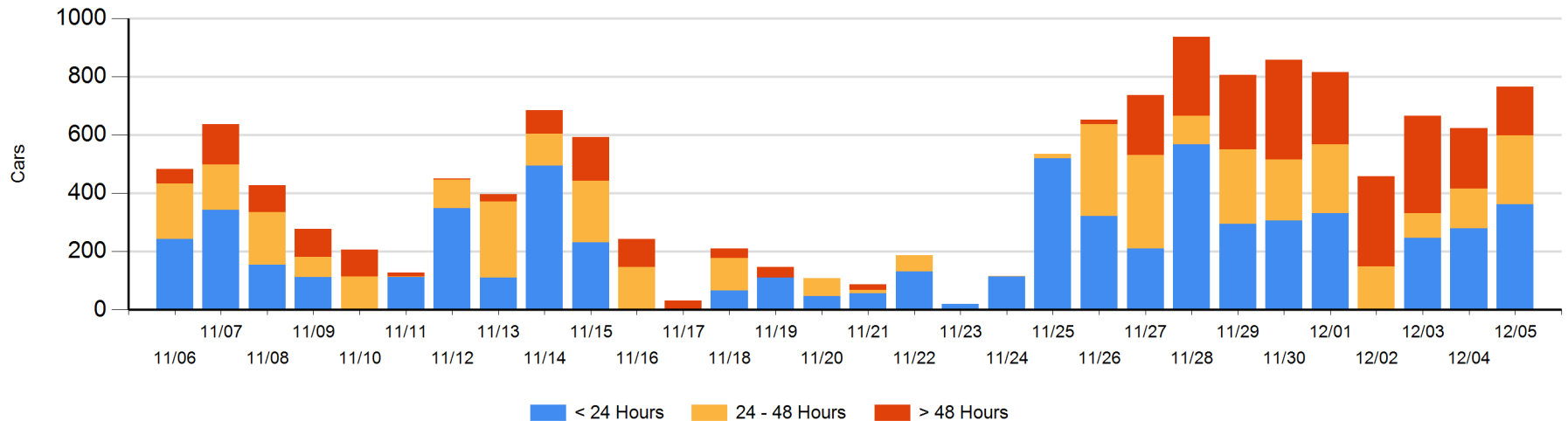
Today

	< 24 Hrs	24 - 48 Hrs	> 48-72 Hrs	> 72 Hrs	Total On Hand
CN	223	93	10	61	387
CP	140	143	24	71	378

Change in Last 24 Hours

	< 24 Hrs	24-48 Hrs	48 - 72 Hrs	> 72 Hrs
CN	130	83	-49	59
CP	-47	17	23	-75

Loaded Cars on Hand Thunder Bay Waiting for Placement - Last 30 Days All Railways



Measurement Definitions

Loads on Wheels	<p>Count of loaded rail cars including all rail cars that have been released loaded at origin and have not been reported by the railway as unloaded at destination.</p> <p>Counts include all rail cars (hopper cars and boxcars) moving within a pipeline.</p>
Loads Not Moving	<p>Loaded rail cars for which the railways have not reported a movement event for 48 hours or more whether the rail car is at origin, enroute or at destination.</p>
Port Unloads	<p>Count of rail cars reported by railways as unloaded at the western port destinations of Vancouver, Prince Rupert and Thunder Bay.</p> <p>Unload counts include all rail cars (hopper cars and boxcars) unloaded by all receivers including major port terminals, transloaders and other receivers.</p>
Cars Arrived	<p>Count of rail cars reported as arrived at the destination railway terminal.</p>
Cars Received in Interchange	<p>Count of rail cars received in interchange by each railway within a destination railway terminal. Interchange activity is tracked for the Vancouver and Thunder Bay pipelines as applicable.</p>
Cars Delivered in Interchange	<p>Count of rail cars delivered in interchange by each railway within a destination railway terminal. Interchange activity is tracked for the Vancouver and Thunder Bay pipelines as applicable.</p>
Cars Placed for Unloading	<p>Count of rail cars reported by the railways as placed loaded at the receiver's facility for unloading.</p>
Loads on Wheels at Destination	<p>Count of rail cars that remain under load within the destination railway terminal including rail cars that have been reported as placed for unloading but not yet reported as unloaded.</p>
Waiting Placement for Unloading	<p>Count of rail cars that have been reported as arrived at the destination railway terminal but not reported as placed for unloading by the railway.</p> <p>For the Ports of Vancouver, Prince Rupert and Thunder Bay the count of rail cars waiting placement for unloading is categorized by age – i.e. the elapsed time from arrival at destination to the current report date.</p>