

Note: Effective with the report for November 27, 2017 the Daily Network Status Report reflects performance and data for the prior day removing the 24 hour lag time which was in place for reporting previously.

Loads on Wheels

- System wide loads on wheels declined in the prior 24 hours - loads now at 10,537 - 5% lower than the trailing 30 day average
- In total loads on wheels decreased by 592 cars reflecting a significant drop in CN volumes along with more a nominal decline in CP volumes offset by an increase in volumes moving on US carriers.
- CN volumes declined in 4 of 5 corridors led by the Vancouver (-333), Thunder Bay (-116) and Prince Rupert corridors (-87). System wide CN loads on wheels are now at 5,318 - 4% lower than the trailing 30 day average.
- CP volumes declined in the USA corridor (-109) offset by a nominal increase in the Vancouver corridor (+75). System wide loads at 4,828 - 7% below the trailing 30 day average.
- Vancouver now at 5,677, Prince Rupert at 904 - below 1,000 for the 13th time in the prior 16 days - and Thunder Bay at 2,520 - 43% higher than the trailing 30 day average.

Loads Not Moving

- The count of loaded cars not moving on CN and CP for 48 hours or more declined for the 3rd consecutive day (-90) in the prior 24 hours; total cars on CN and CP not moving for 48 hours now at 1,761.
- CN
 - The count of cars not moving declined nominally on a net basis in the prior 24 hours - loads on wheels now idle for 48 hours or more at 858 with 70% of these cars destined to Vancouver .
 - Principal change is in the Prince Rupert corridor (-95) with nominal changes in other corridors.
 - 70% of cars (601) are dwelling on line - of these 88% are destined to Vancouver of which 90% are dwelling at locations west of Jasper.
- CP
 - CP counts declined somewhat (-84) reflecting a decline in the Thunder Bay corridor (-224) offset by an increase in the Vancouver corridor (+119) - idle cars now at 903; the lowest level in the prior 30 days.
 - Only 55% of cars are dwelling at origin - 492 cars the lowest level in the prior 30 days. The majority of these cars (397) are destined to Vancouver.

Port Performance

- CN and CP unloaded a total of 1,541 cars at the three western ports - in line with average Wednesday performance in the prior 30 days and 23% higher than the same day last week. Through the first 3 days of week 19 western port unloads are tracking at the same pace as last week.
- Prince Rupert continues to track ahead of last week's pace having already exceeded total unloads last week while Vancouver (-11%) and Thunder Bay (-23%) unloads continue to lag as compared to last week.
- Vancouver
 - Total of 977 cars reported unloaded by CN and CP at the Port of Vancouver; CN - 487 and CP - 490
 - There are currently 723 cars on hand at Vancouver waiting placement for unloading -119 of these cars arrived at Vancouver more than 72 hours ago.
- Thunder Bay
 - Total of 341 cars reported unloaded by CN and CP in the prior 24 hours
 - Cars at Thunder Bay waiting placement now at 703; Of these, 113 arrived at Thunder Bay more than 72 hours ago.

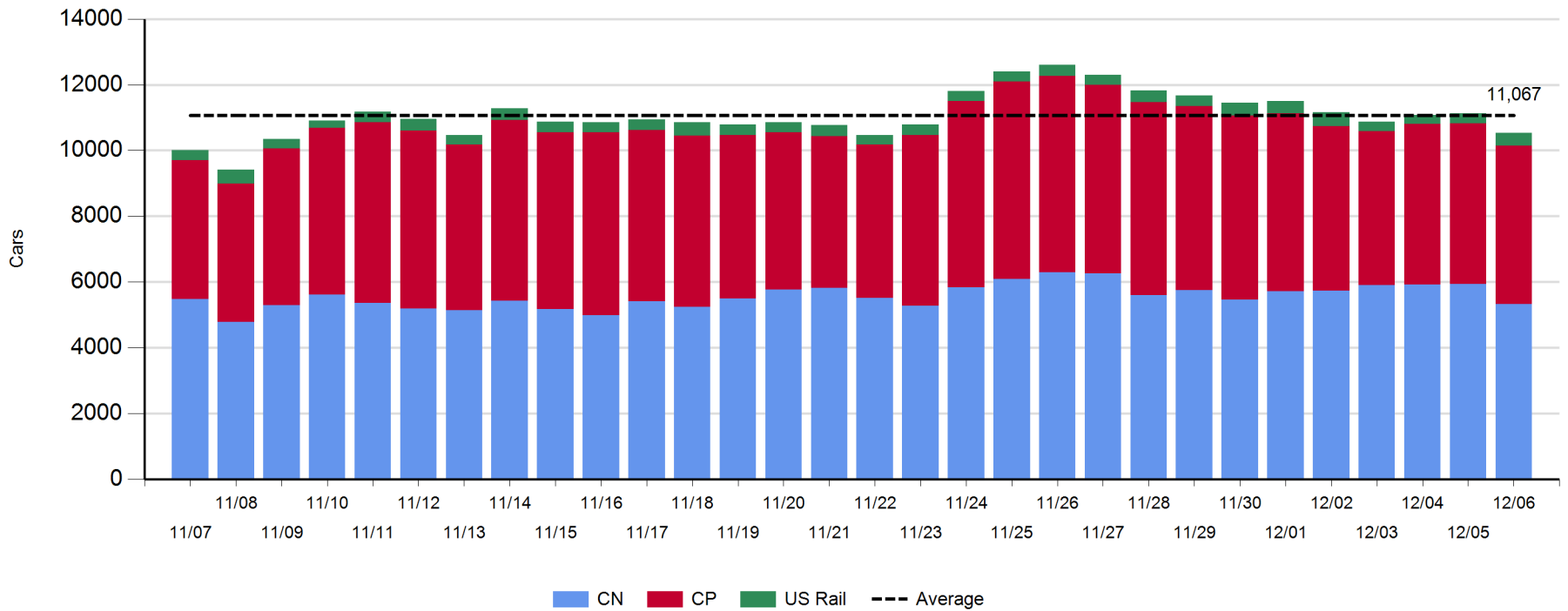
Daily Loads on Wheels - 12/6/2017

	E Canada	Prince Rupert	Thunder Bay	USA/MEX	Vancouver	Total
CN	313	904	583	413	3,105	5,318
CP	80		1,937	282	2,529	4,828
Short Line	11				43	54
US Rail				337		337
	404	904	2,520	1,032	5,677	10,537

Change in Loads on Wheels - Prior 24 Hours

	E Canada	Prince Rupert	Thunder Bay	USA/MEX	Vancouver	Total
CN	-86	-87	-116	9	-333	-613
CP	-14		-7	-108	75	-54
Short Line	0				-11	-11
US Rail				86		86
	-100	-87	-123	-13	-269	-592

Loads on Wheels - Prior 30 Days

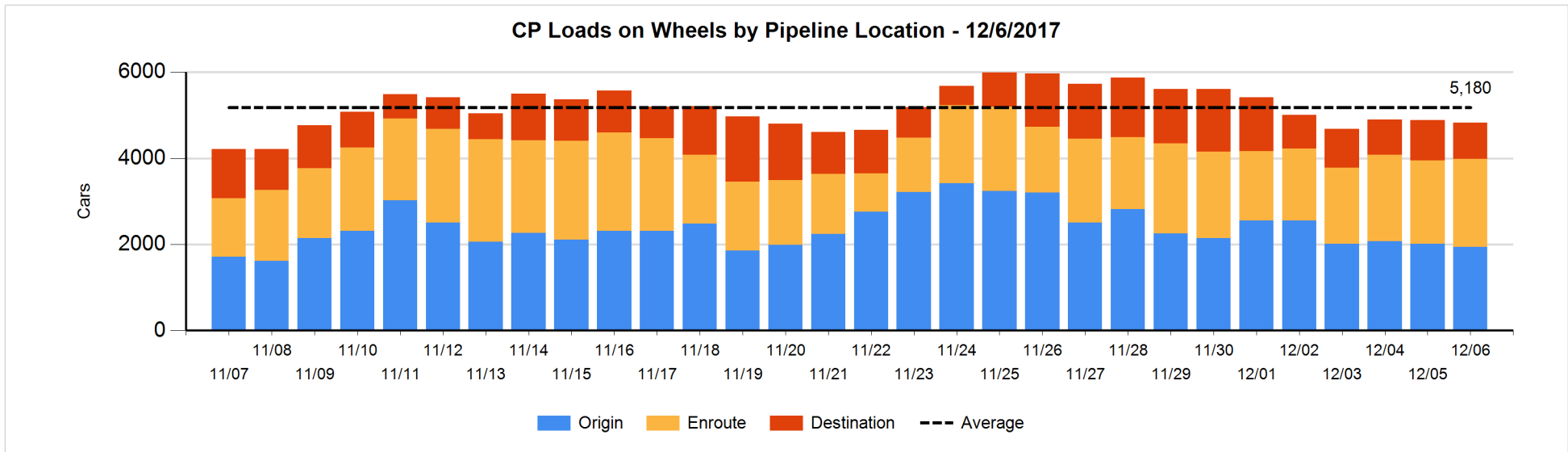
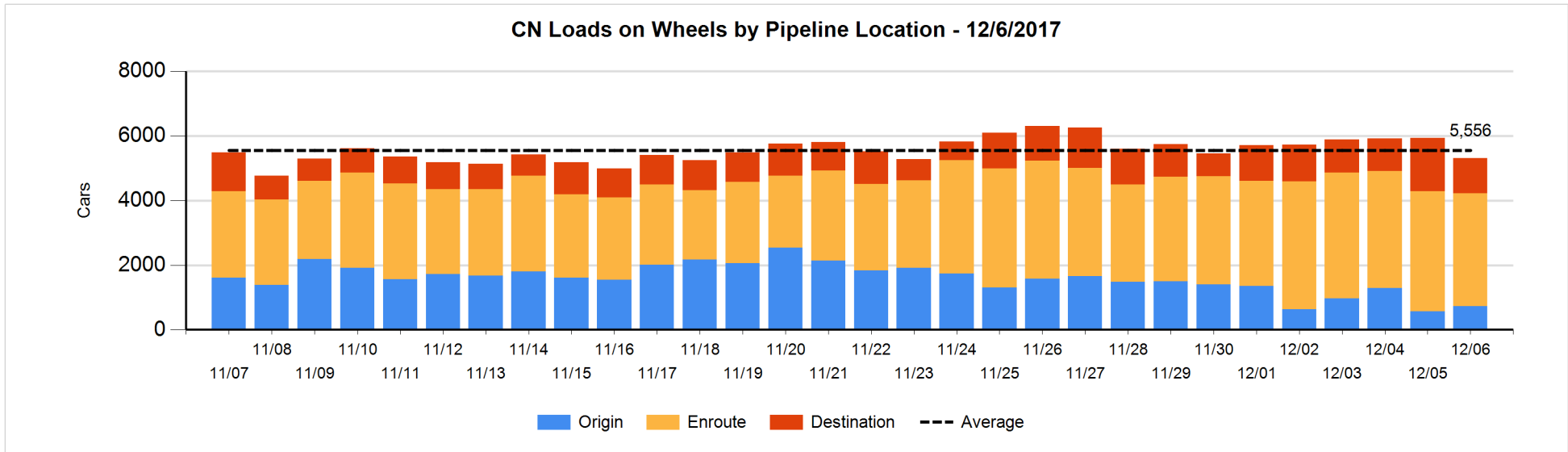


Daily Loads on Wheels By Pipeline Location - 12/6/2017

	E Canada	Prince Rupert	Thunder Bay	USA/MEX	Vancouver	Total
CN						
Origin	7	140	89	82	408	726
Enroute	217	714	74	318	2,176	3,499
Destination	89	50	420	13	521	1,093
	313	904	583	413	3,105	5,318
CP						
Origin	9		543	2	1,385	1,939
Enroute	69		897	278	797	2,041
Destination	2		497	2	347	848
	80		1,937	282	2,529	4,828
US Rail / Short Line						
Origin						
Enroute	1			259		260
Destination	10			78	43	131
	11			337	43	391

Change in Daily Loads on Wheels By Pipeline Location - Prior 24 Hours

	E Canada	Prince Rupert	Thunder Bay	USA/MEX	Vancouver	Total
CN						
Origin	7	38	39	-34	110	160
Enroute	-36	96	-165	49	-172	-228
Destination	-57	-221	10	-6	-271	-545
	-86	-87	-116	9	-333	-613
CP						
Origin	0		-266	-55	251	-70
Enroute	-1		332	-53	-174	104
Destination	-13		-73	0	-2	-88
	-14		-7	-108	75	-54
US Rail / Short Line						
Origin						
Enroute	-9			110		101
Destination	9			-24	-11	-26
	0			86	-11	75

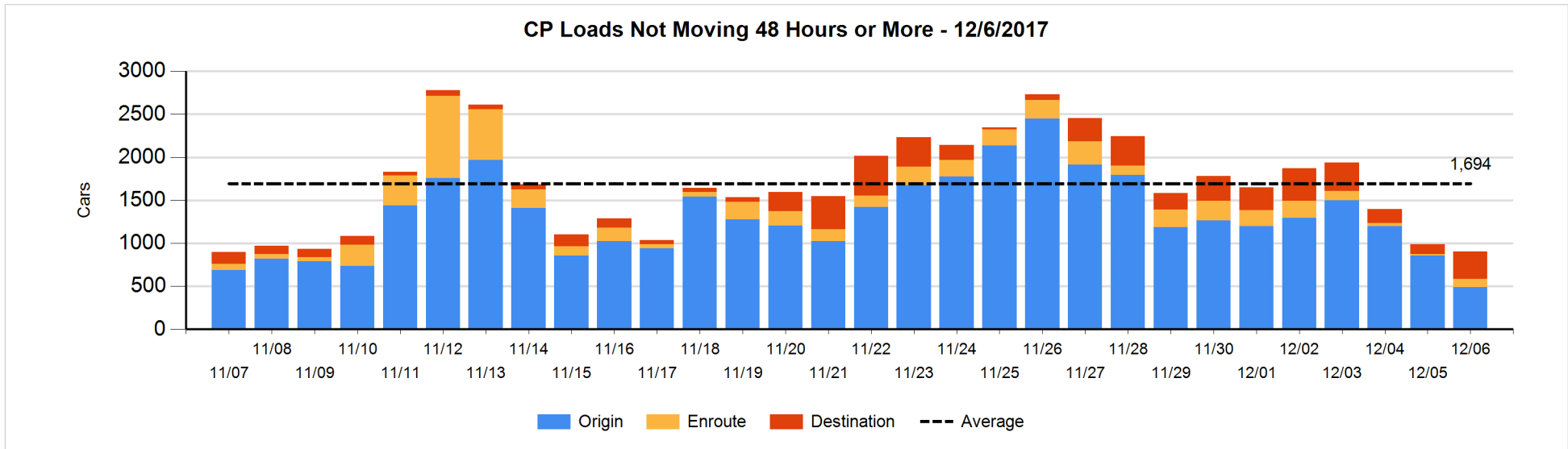
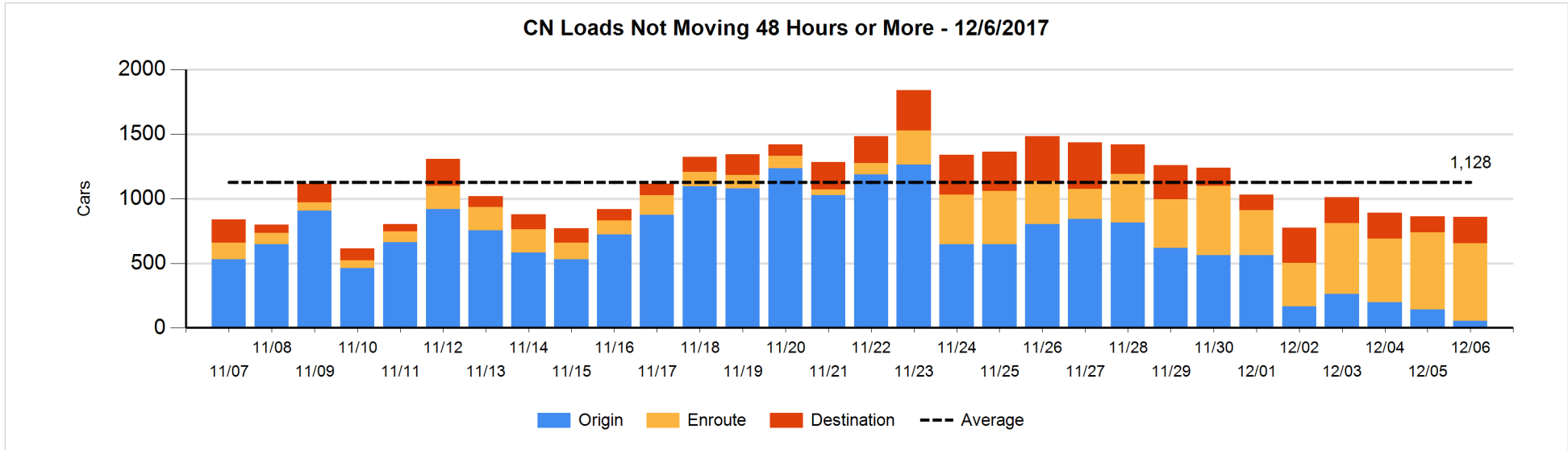


Loads Not Moving 48 Hours or More - 12/6/2017

	E Canada	Prince Rupert	Thunder Bay	USA/MEX	Vancouver	Total
CN						
Origin		1		10	44	55
Enroute	14	12		49	526	601
Destination	54	15	90	3	40	202
	68	28	90	62	610	858
CP						
Origin	4		91		397	492
Enroute	38		1	49	6	94
Destination			220		97	317
	42		312	49	500	903
US Rail / Short Line						
Origin						
Enroute				20		20
Destination	1			27	11	39
	1			47	11	59

Change in Loads Not Moving 48 Hours or More - 12/6/2017

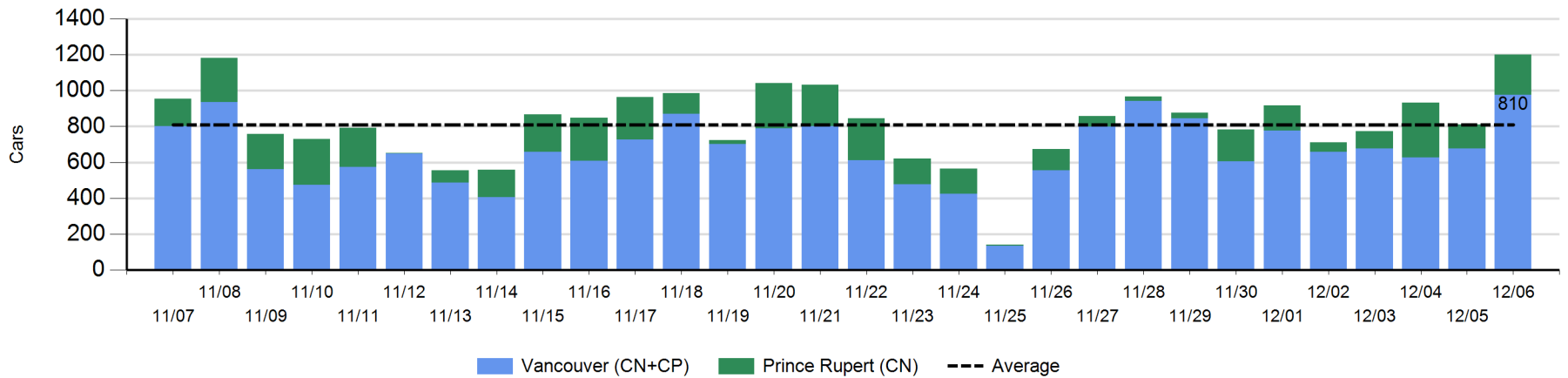
	E Canada	Prince Rupert	Thunder Bay	USA/MEX	Vancouver	Total
CN						
Origin		-98		10	0	-88
Enroute	-19	-2		-9	37	7
Destination	27	5	33	-4	14	75
	8	-95	33	-3	51	-6
CP						
Origin	0		-335	-54	27	-362
Enroute	30		0	45	-3	72
Destination			111		95	206
	30		-224	-9	119	-84
US Rail / Short Line						
Origin						
Enroute				2		2
Destination	0			-20	-1	-21
	0			-18	-1	-19



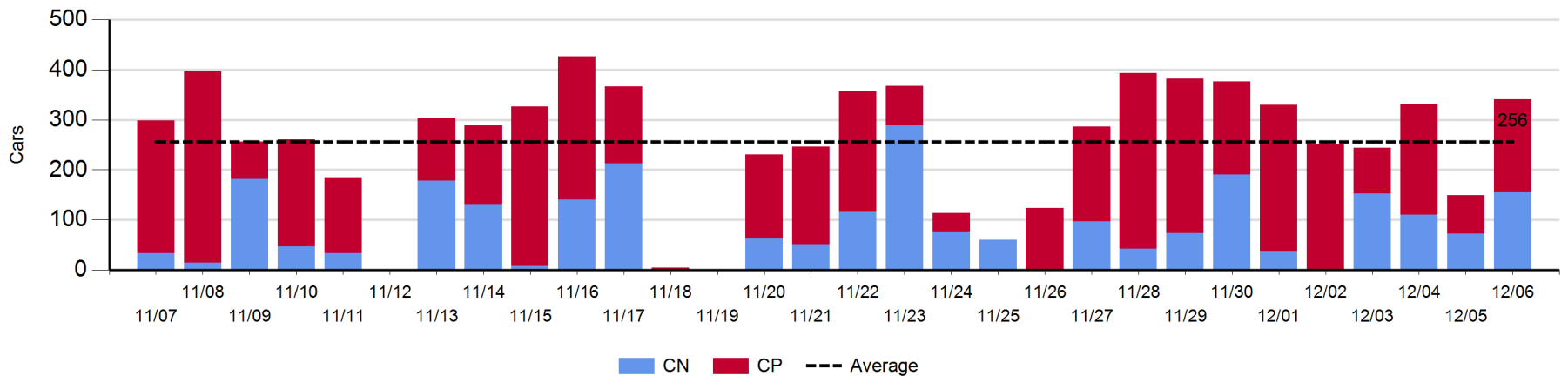
Port Unloads - 12/6/2017

	Prince Rupert	Vancouver	West Coast Total	Thunder Bay	Total
CN	223	487	710	155	865
CP		490	490	186	676
	223	977	1,200	341	1,541

West Coast Port Unloads - Prior 30 Days



Thunder Bay Port Unloads - Prior 30 Days



Port Terminal Status

Vancouver

Daily Activity for 12/6/2017

	Cars Arrived	Cars Received in Interchange	Cars Delivered in Interchange	Cars Placed for Unloading	Loads on Wheels at Destination As of 12/6/2017
CN	302	127	101	409	521
CP	408	101	128	497	347
SRY		1		12	43

Port Unloads

	12/06	12/05	Week To Date	Last Week
CN	487	302	1,152	2,719
CP	490	376	1,131	2,585
SRY	12	5	26	41

Age Profile of Loaded Cars Waiting Placement for Unloading

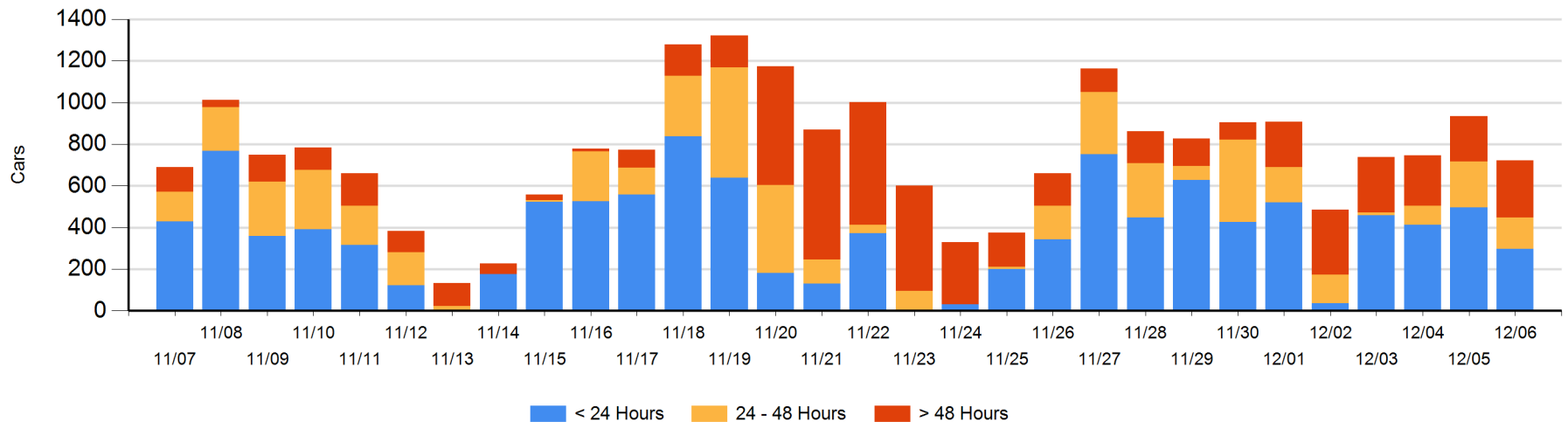
Today

	< 24 Hrs	24 - 48 Hrs	> 48-72 Hrs	> 72 Hrs	Total On Hand
CN	221	106	153	19	499
CP	75	45	4	100	224
SRY					0

Change in Last 24 Hours

	< 24 Hrs	24-48 Hrs	48 - 72 Hrs	> 72 Hrs
CN	-50	-87	131	-70
CP	-149	15	-57	56
SRY				

Loaded Cars on Hand Vancouver Waiting for Placement - Last 30 Days All Railways



Port Terminal Status

Prince Rupert

Daily Activity for 12/6/2017

	Cars Arrived	Cars Received in Interchange	Cars Delivered in Interchange	Cars Placed for Unloading	Loads on Wheels at Destination As of 12/6/2017
CN					50

Port Unloads

	12/06	12/05	Week To Date	Last Week
CN	223	133	660	586

Age Profile of Loaded Cars Waiting Placement for Unloading

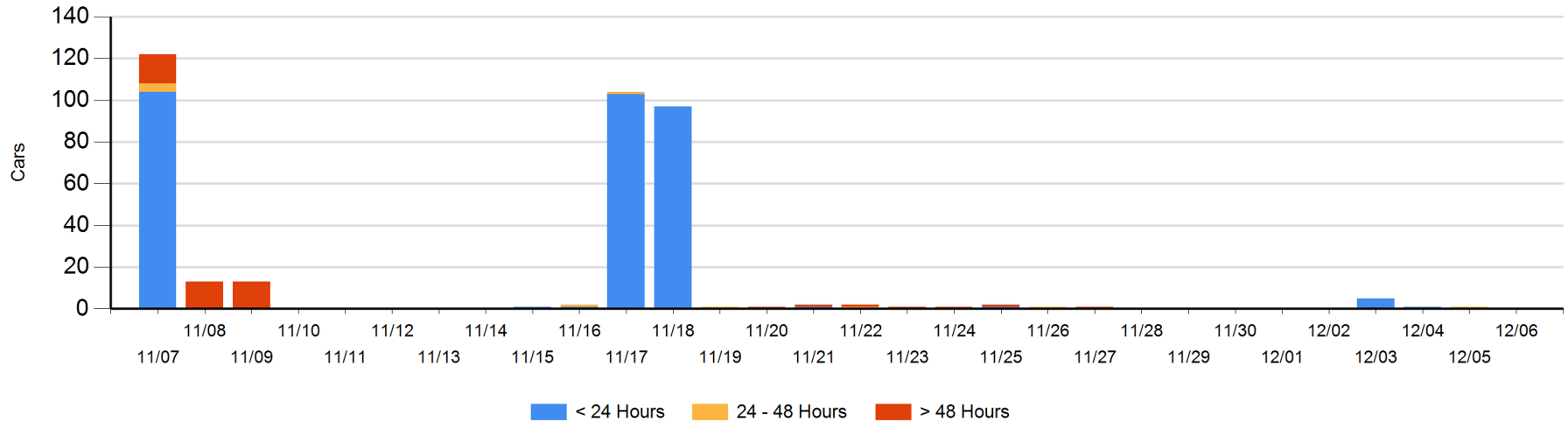
Today

	< 24 Hrs	24 - 48 Hrs	> 48-72 Hrs	> 72 Hrs	Total On Hand
CN					0

Change in Last 24 Hours

	< 24 Hrs	24-48 Hrs	48 - 72 Hrs	> 72 Hrs
CN		-1		

Loaded Cars on Hand Prince Rupert Waiting for Placement - Last 30 Days All Railways



Port Terminal Status

Thunder Bay

Daily Activity for 12/6/2017

	Cars Arrived	Cars Received in Interchange	Cars Delivered in Interchange	Cars Placed for Unloading	Loads on Wheels at Destination As of 12/6/2017
CN	192			170	420
CP				60	497

Port Unloads

	12/06	12/05	Week To Date	Last Week
CN	155	73	338	596
CP	186	76	484	1,667

Age Profile of Loaded Cars Waiting Placement for Unloading

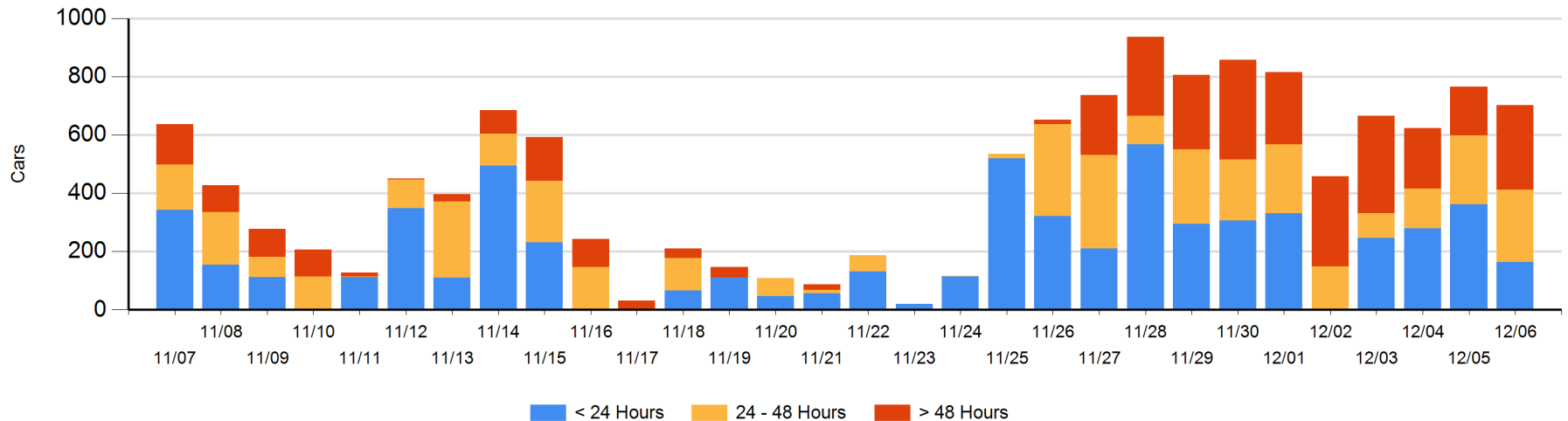
Today

	< 24 Hrs	24 - 48 Hrs	> 48-72 Hrs	> 72 Hrs	Total On Hand
CN	165	131	50	36	382
CP		117	127	77	321

Change in Last 24 Hours

	< 24 Hrs	24-48 Hrs	48 - 72 Hrs	> 72 Hrs
CN	-58	38	40	-25
CP	-140	-26	103	6

Loaded Cars on Hand Thunder Bay Waiting for Placement - Last 30 Days All Railways



Measurement Definitions

Loads on Wheels	<p>Count of loaded rail cars including all rail cars that have been released loaded at origin and have not been reported by the railway as unloaded at destination.</p> <p>Counts include all rail cars (hopper cars and boxcars) moving within a pipeline.</p>
Loads Not Moving	<p>Loaded rail cars for which the railways have not reported a movement event for 48 hours or more whether the rail car is at origin, enroute or at destination.</p>
Port Unloads	<p>Count of rail cars reported by railways as unloaded at the western port destinations of Vancouver, Prince Rupert and Thunder Bay.</p> <p>Unload counts include all rail cars (hopper cars and boxcars) unloaded by all receivers including major port terminals, transloaders and other receivers.</p>
Cars Arrived	<p>Count of rail cars reported as arrived at the destination railway terminal.</p>
Cars Received in Interchange	<p>Count of rail cars received in interchange by each railway within a destination railway terminal. Interchange activity is tracked for the Vancouver and Thunder Bay pipelines as applicable.</p>
Cars Delivered in Interchange	<p>Count of rail cars delivered in interchange by each railway within a destination railway terminal. Interchange activity is tracked for the Vancouver and Thunder Bay pipelines as applicable.</p>
Cars Placed for Unloading	<p>Count of rail cars reported by the railways as placed loaded at the receiver's facility for unloading.</p>
Loads on Wheels at Destination	<p>Count of rail cars that remain under load within the destination railway terminal including rail cars that have been reported as placed for unloading but not yet reported as unloaded.</p>
Waiting Placement for Unloading	<p>Count of rail cars that have been reported as arrived at the destination railway terminal but not reported as placed for unloading by the railway.</p> <p>For the Ports of Vancouver, Prince Rupert and Thunder Bay the count of rail cars waiting placement for unloading is categorized by age – i.e. the elapsed time from arrival at destination to the current report date.</p>