

Note: Production of the ATC Daily Network Status report was temporarily suspended on December 11th when it was determined that there had been a temporary interruption in the flow of data for selected CP movements. The principal impact on reporting involved specifically the reporting of cars not moving for 48 hours or more for CP for the period December 7 - 11; there is no known impact on CN reporting. The problem has now been resolved however readers are cautioned that the chart on page 6 of the report depicting CP cars not moving contains over-stated data for the Dec. 7-11 period. All other metrics are unaffected.

Loads on Wheels

- System wide loads on wheels increased for the first time in 6 days - loads now at 10,038 - 9% lower than the trailing 30 day average
- In total loads on wheels increased by 209 cars reflecting slight increases in CN and CP volumes.
- CN volumes declined in 3 of 5 corridors with increases seen in the Prince Rupert (+129) and E Canada (+115) corridors. System wide CN loads on wheels are now at 5,437 - 2% lower than the trailing 30 day average.
- CP volumes increased in the USA corridor (+150) offset by nominal declines in other corridors. System wide loads at 4,452 - 13% below the trailing 30 day average.
- Vancouver now at 5,550, Prince Rupert at 1,388 - the highest level in the prior 30 days - and Thunder Bay at 1,745.

Loads Not Moving

- The count of loaded cars not moving on CN and CP for 48 hours or more declined by 538 cars in the prior 24 hours; total cars on CN and CP not moving for 48 hours now at 1,616 - the lowest level in the prior 30 days.
- CN
 - The count of cars not moving increased by 115 cars on a net basis in the prior 24 hours - loads on wheels now idle for 48 hours or more at 578.
 - Principal changes are in the Vancouver (-69), E Canada (+83) and Prince Rupert (+98) corridors.
 - Cars are dwelling throughout the various pipelines - Prince Rupert primarily at origin and Vancouver primarily at destination.
- CP
 - CP counts declined by 653 cars with 85% of the decline attributable to the Vancouver corridor - idle cars now at 1,038
 - 90% of cars are dwelling at origin with more than 400 cars sitting loaded at origin for 4 days or more.

Port Performance

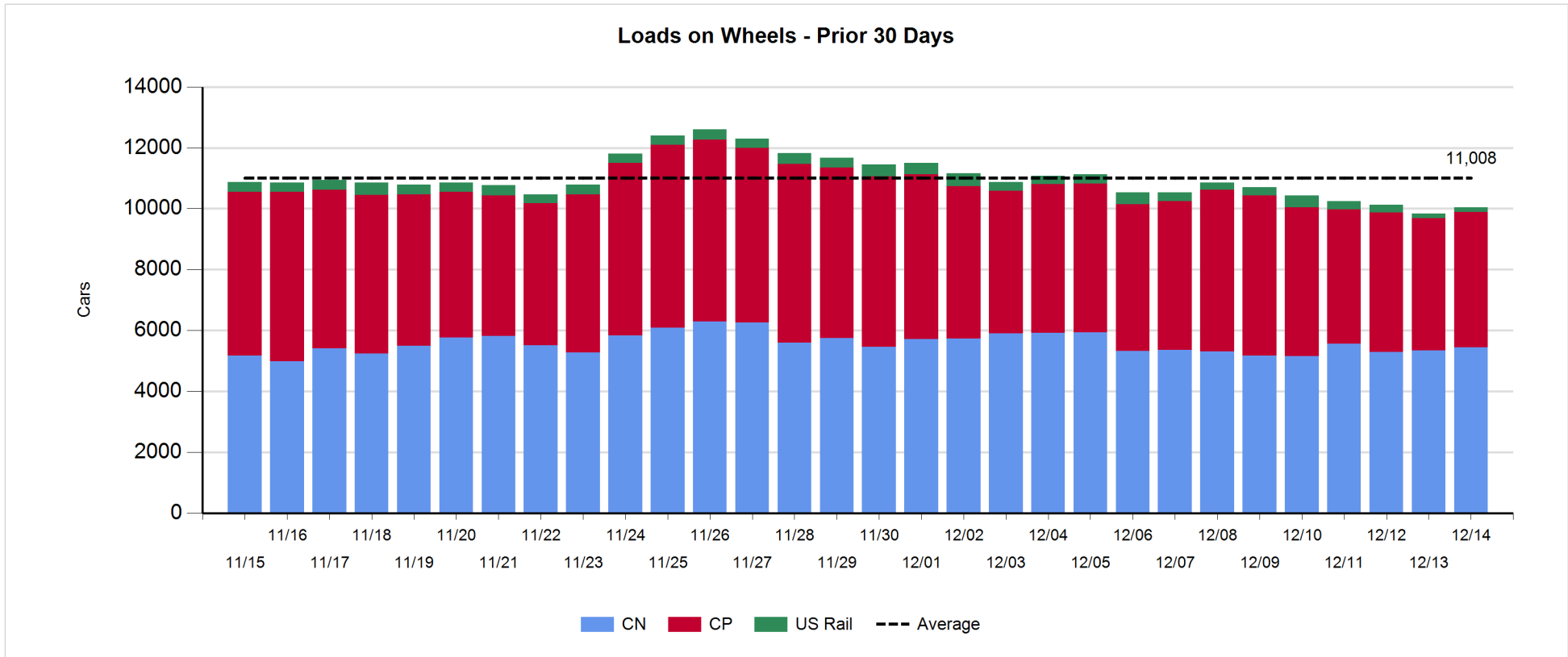
- CN and CP unloaded a total of 1,052 cars at the three western ports. Through the initial 4 days of week 20 unloads are tracking 8% ahead of last week's pace
- Vancouver
 - Total of 838 cars reported unloaded by CN and CP at the Port of Vancouver; CN - 368 and CP - 470. Vancouver currently running 12% ahead of last week driven by CN performance.
 - There are currently 966 cars on hand at Vancouver waiting placement for unloading - 185 of these cars arrived at Vancouver more than 72 hours ago.
- Thunder Bay
 - Total of 188 cars reported unloaded by CN and CP in the prior 24 hours.
 - Cars at Thunder Bay waiting placement now at 80 with few cars on hand for either railway.

Daily Loads on Wheels - 12/14/2017

	E Canada	Prince Rupert	Thunder Bay	USA/MEX	Vancouver	Total
CN	538	1,388	402	379	2,730	5,437
CP	80		1,343	240	2,789	4,452
Short Line	23				31	54
US Rail				95		95
	641	1,388	1,745	714	5,550	10,038

Change in Loads on Wheels - Prior 24 Hours

	E Canada	Prince Rupert	Thunder Bay	USA/MEX	Vancouver	Total
CN	115	129	-27	-6	-107	104
CP	-24		4	150	-26	104
Short Line	2				10	12
US Rail				-11		-11
	93	129	-23	133	-123	209



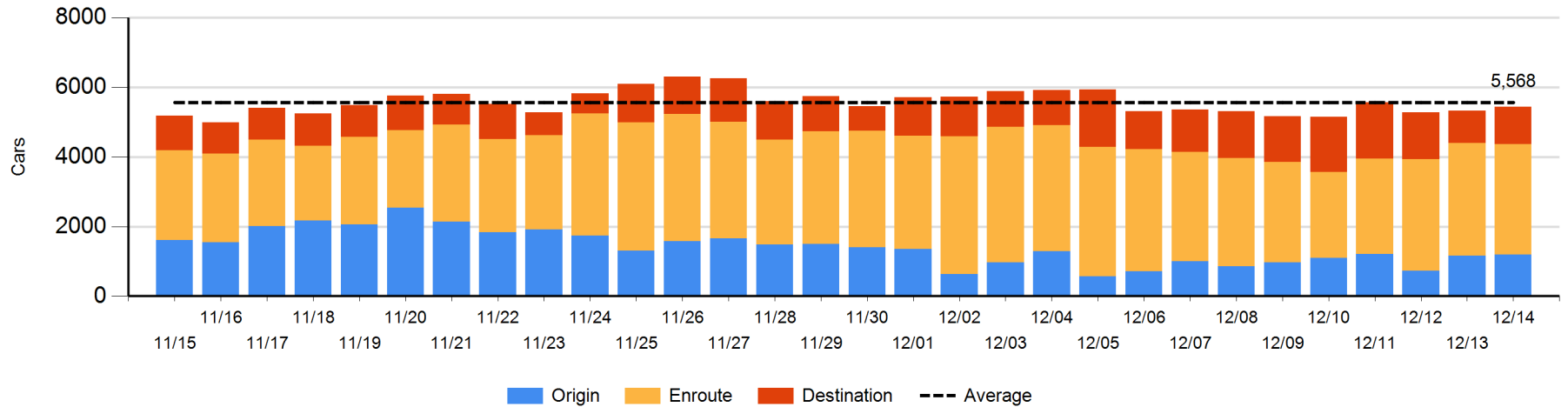
Daily Loads on Wheels By Pipeline Location - 12/14/2017

	E Canada	Prince Rupert	Thunder Bay	USA/MEX	Vancouver	Total
CN						
Origin	193	360	33	3	600	1,189
Enroute	262	973	217	360	1,360	3,172
Destination	83	55	152	16	770	1,076
	538	1,388	402	379	2,730	5,437
CP						
Origin	5		817	179	1,058	2,059
Enroute	75		358	60	1,178	1,671
Destination			168	1	553	722
	80		1,343	240	2,789	4,452
US Rail / Short Line						
Origin						
Enroute	15			65		80
Destination	8			30	31	69
	23			95	31	149

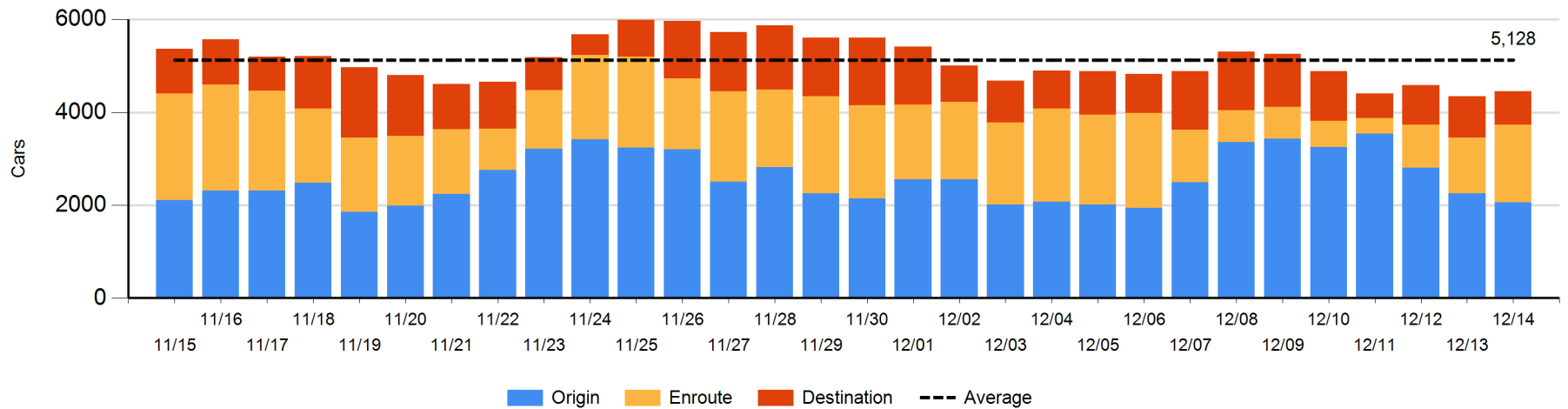
Change in Daily Loads on Wheels By Pipeline Location - Prior 24 Hours

	E Canada	Prince Rupert	Thunder Bay	USA/MEX	Vancouver	Total
CN						
Origin	97	-74	-96	-4	102	25
Enroute	46	156	3	-4	-262	-61
Destination	-28	47	66	2	53	140
	115	129	-27	-6	-107	104
CP						
Origin	-62		-229	142	-41	-190
Enroute	38		319	7	107	471
Destination			-86	1	-92	-177
	-24		4	150	-26	104
US Rail / Short Line						
Origin						
Enroute	5			-2		3
Destination	-3			-9	10	-2
	2			-11	10	1

CN Loads on Wheels by Pipeline Location - 12/14/2017



CP Loads on Wheels by Pipeline Location - 12/14/2017

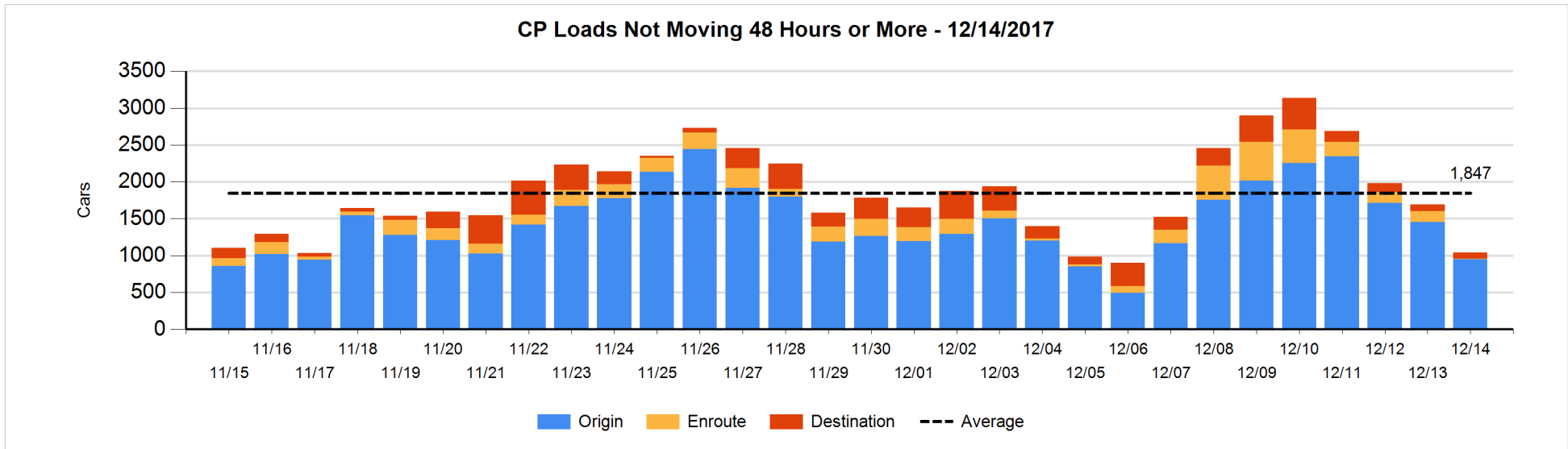
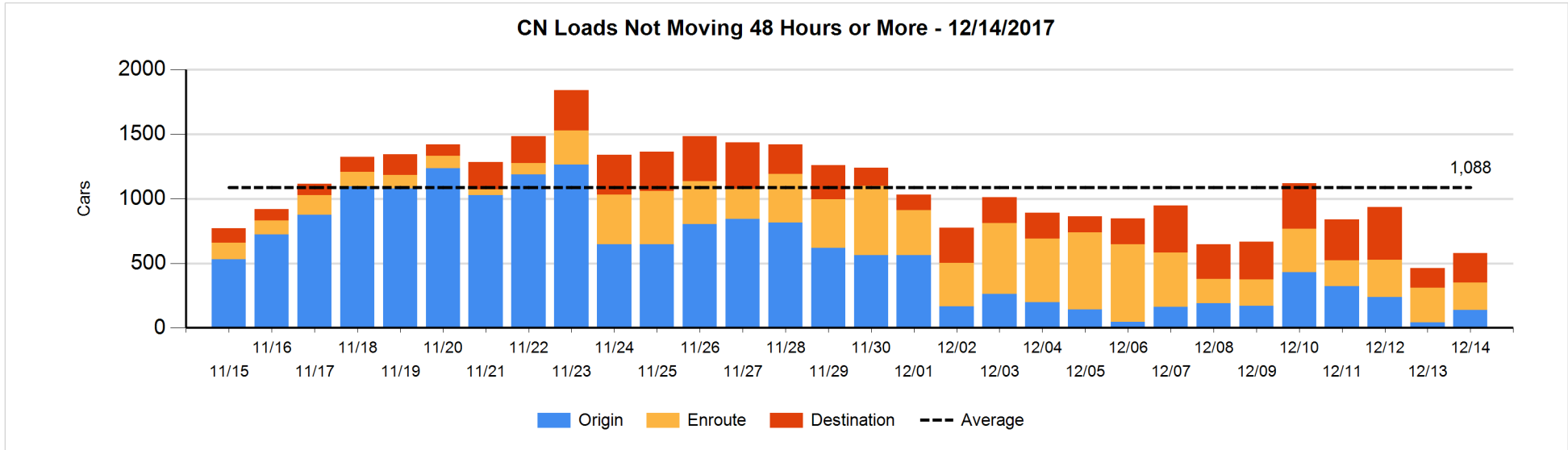


Loads Not Moving 48 Hours or More - 12/14/2017

	E Canada	Prince Rupert	Thunder Bay	USA/MEX	Vancouver	Total
CN						
Origin	14	110			15	139
Enroute	93	33	2	8	75	211
Destination	79	7	7	11	124	228
	186	150	9	19	214	578
CP						
Origin	4		551	2	389	946
Enroute	7		1	2	3	13
Destination			46		33	79
	11		598	4	425	1038
US Rail / Short Line						
Origin						
Enroute				22		22
Destination	2			25	9	36
	2			47	9	58

Change in Loads Not Moving 48 Hours or More - 12/14/2017

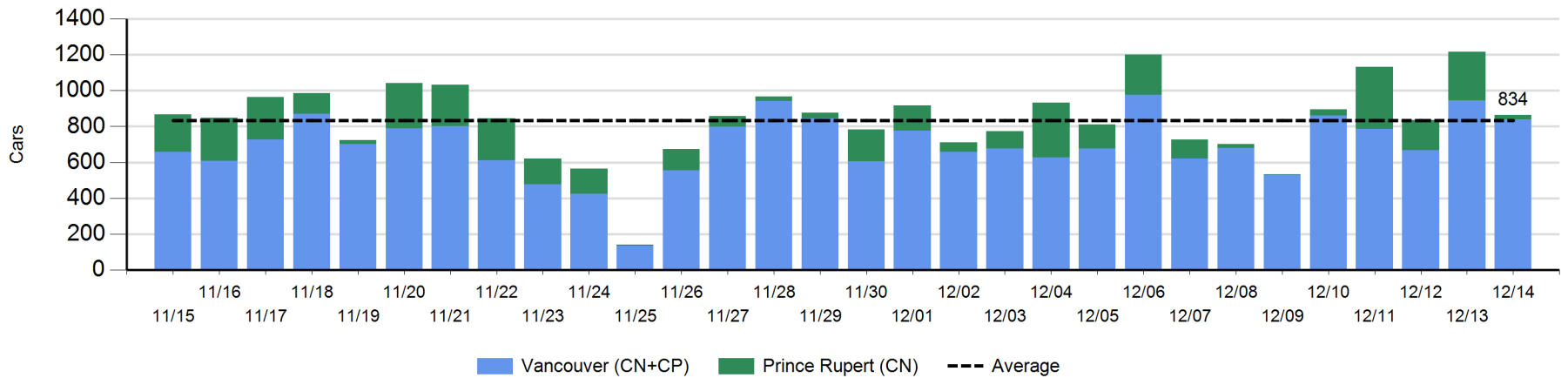
	E Canada	Prince Rupert	Thunder Bay	USA/MEX	Vancouver	Total
CN						
Origin	7	97			-5	99
Enroute	3	2	0	1	-67	-61
Destination	73	-1	3	-1	3	77
	83	98	3	0	-69	115
CP						
Origin	-11		-51	0	-446	-508
Enroute	-23		0	1	-111	-133
Destination			-2		-10	-12
	-34		-53	1	-567	-653
US Rail / Short Line						
Origin						
Enroute				-4		-4
Destination	0			-5	-1	-6
	0			-9	-1	-10



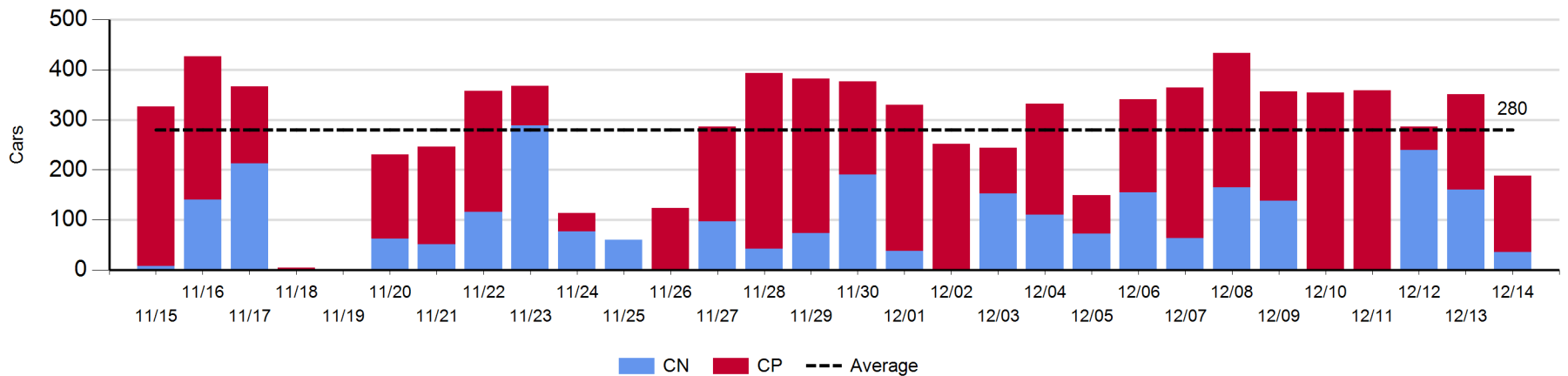
Port Unloads - 12/14/2017

	Prince Rupert	Vancouver	West Coast Total	Thunder Bay	Total
CN	26	368	394	36	430
CP		470	470	152	622
	26	838	864	188	1,052

West Coast Port Unloads - Prior 30 Days



Thunder Bay Port Unloads - Prior 30 Days



Port Terminal Status

Vancouver

Daily Activity for 12/14/2017

	Cars Arrived	Cars Received in Interchange	Cars Delivered in Interchange	Cars Placed for Unloading	Loads on Wheels at Destination As of 12/14/2017
CN	314	127	6	480	770
CP	509		130	471	553
SRY		9		11	31

Port Unloads

	12/14	12/13	Week To Date	Last Week
CN	368	518	1,660	2,253
CP	470	427	1,575	2,721
SRY	11	9	47	52

Age Profile of Loaded Cars Waiting Placement for Unloading

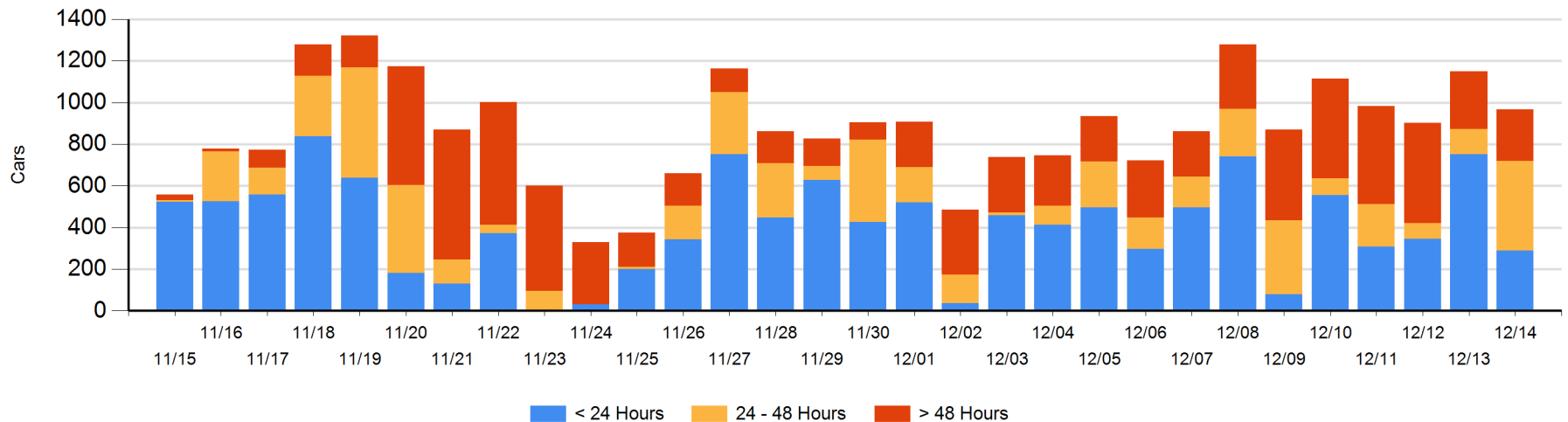
Today

	< 24 Hrs	24 - 48 Hrs	> 48-72 Hrs	> 72 Hrs	Total On Hand
CN	98	202	62	111	473
CP	190	229		74	493
SRY				2	2

Change in Last 24 Hours

	< 24 Hrs	24-48 Hrs	48 - 72 Hrs	> 72 Hrs
CN	-145	137	22	-46
CP	-318	173		-6
SRY			-2	2

Loaded Cars on Hand Vancouver Waiting for Placement - Last 30 Days All Railways



Port Terminal Status

Prince Rupert

Daily Activity for 12/14/2017

	Cars Arrived	Cars Received in Interchange	Cars Delivered in Interchange	Cars Placed for Unloading	Loads on Wheels at Destination As of 12/14/2017
CN	74			74	55

Port Unloads

	12/14	12/13	Week To Date	Last Week
CN	26	270	814	827

Age Profile of Loaded Cars Waiting Placement for Unloading

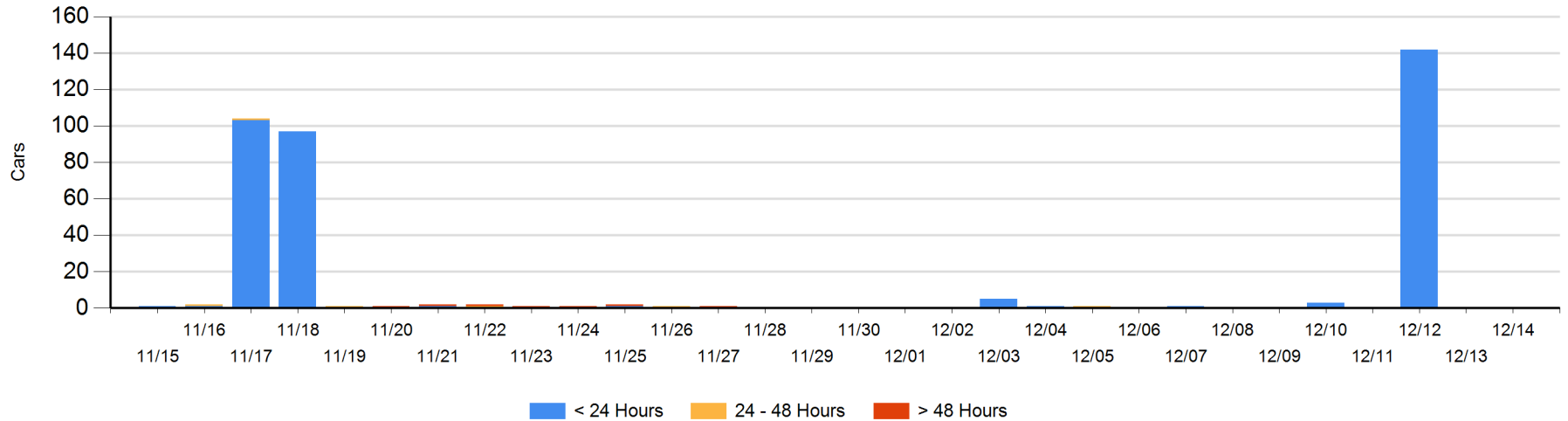
Today

	< 24 Hrs	24 - 48 Hrs	> 48-72 Hrs	> 72 Hrs	Total On Hand
CN					0

Change in Last 24 Hours

	< 24 Hrs	24-48 Hrs	48 - 72 Hrs	> 72 Hrs
CN				

Loaded Cars on Hand Prince Rupert Waiting for Placement - Last 30 Days All Railways



Port Terminal Status

Thunder Bay

Daily Activity for 12/14/2017

	Cars Arrived	Cars Received in Interchange	Cars Delivered in Interchange	Cars Placed for Unloading	Loads on Wheels at Destination As of 12/14/2017
CN	102			144	152
CP	215			182	168

Port Unloads

	12/14	12/13	Week To Date	Last Week
CN	36	161	437	706
CP	152	190	747	1,623

Age Profile of Loaded Cars Waiting Placement for Unloading

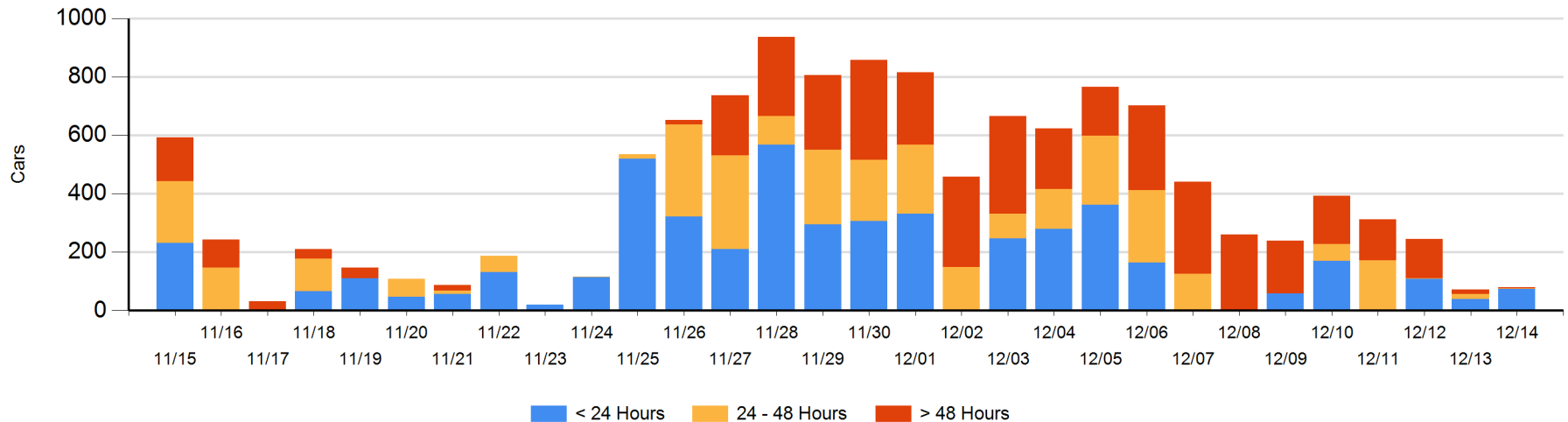
Today

	< 24 Hrs	24 - 48 Hrs	> 48-72 Hrs	> 72 Hrs	Total On Hand
CN	10			1	11
CP	63	2		4	69

Change in Last 24 Hours

	< 24 Hrs	24-48 Hrs	48 - 72 Hrs	> 72 Hrs
CN	-1	-17	-1	1
CP	35	2		-10

Loaded Cars on Hand Thunder Bay Waiting for Placement - Last 30 Days All Railways



Measurement Definitions

Loads on Wheels	<p>Count of loaded rail cars including all rail cars that have been released loaded at origin and have not been reported by the railway as unloaded at destination.</p> <p>Counts include all rail cars (hopper cars and boxcars) moving within a pipeline.</p>
Loads Not Moving	<p>Loaded rail cars for which the railways have not reported a movement event for 48 hours or more whether the rail car is at origin, enroute or at destination.</p>
Port Unloads	<p>Count of rail cars reported by railways as unloaded at the western port destinations of Vancouver, Prince Rupert and Thunder Bay.</p> <p>Unload counts include all rail cars (hopper cars and boxcars) unloaded by all receivers including major port terminals, transloaders and other receivers.</p>
Cars Arrived	<p>Count of rail cars reported as arrived at the destination railway terminal.</p>
Cars Received in Interchange	<p>Count of rail cars received in interchange by each railway within a destination railway terminal. Interchange activity is tracked for the Vancouver and Thunder Bay pipelines as applicable.</p>
Cars Delivered in Interchange	<p>Count of rail cars delivered in interchange by each railway within a destination railway terminal. Interchange activity is tracked for the Vancouver and Thunder Bay pipelines as applicable.</p>
Cars Placed for Unloading	<p>Count of rail cars reported by the railways as placed loaded at the receiver's facility for unloading.</p>
Loads on Wheels at Destination	<p>Count of rail cars that remain under load within the destination railway terminal including rail cars that have been reported as placed for unloading but not yet reported as unloaded.</p>
Waiting Placement for Unloading	<p>Count of rail cars that have been reported as arrived at the destination railway terminal but not reported as placed for unloading by the railway.</p> <p>For the Ports of Vancouver, Prince Rupert and Thunder Bay the count of rail cars waiting placement for unloading is categorized by age – i.e. the elapsed time from arrival at destination to the current report date.</p>