

Loads on Wheels

- Loads on wheels increased during the prior 24 hours for the 3rd consecutive day rising above the 11,000 car threshold - loads on wheels now at 11,152 - 15% above the trailing 30 day average
- Loads on wheels increased by 604 cars on a net basis reflecting increases on CN (+227) and CP (+280).
- CN volumes increased in the E Canada (+116) and Prince Rupert (+197) corridors with little change in other corridors. System wide CN loads on wheels now at 5,837 - 11% above the trailing 30 day average.
- CP volume increases reflect increased traffic in the Vancouver (+218) and E Canada (+159) corridors. CP system wide loads on wheels now at 5,054 - above the 5,000 car mark for the first time in 30 days and 20% above the trailing 30 day average.
- Vancouver now at 6,800 - the highest level in 30 days and Prince Rupert at 1,688.

Hopper Car Rationing

- **Preliminary indications are that CN rationed an estimated 2,000 hopper car orders for week 29.**

Loads Not Moving

- The number of cars not moving for 48+ hours on CN and CP were unchanged in the prior 24 hours - idle cars on CN and CP now at 4,199 - a 14% increase in the last 3 days.
- CN
 - The count of idle cars remained unchanged in the prior 24 hours - idle cars on CN now at 2,084 - above the 2,000 car mark for the 17th straight day - **1,500+ have been idle for 4 days or more - a 25% improvement in the last 7 days; 1,100 have not moved in 7 days unchanged in the last 7 days and 850 cars have not moved for 10+ days - a 15% deterioration in the last 7 days.**
 - Vancouver (1,075) and Prince Rupert (441) represent 73% of all idle cars - 70% of all idle cars are dwelling at origin
- CP
 - CP counts were unchanged in the prior 24 hours - idle cars now at 2,115 - **a 50% increase in the last 6 days; more than 1,100 of these cars have been idle for 4+ days - a 90% increase in the prior 2 days.**
 - Vancouver continues to account for the majority of idle cars (87%) with 84% of all idle cars dwelling at origin locations.

Port Performance

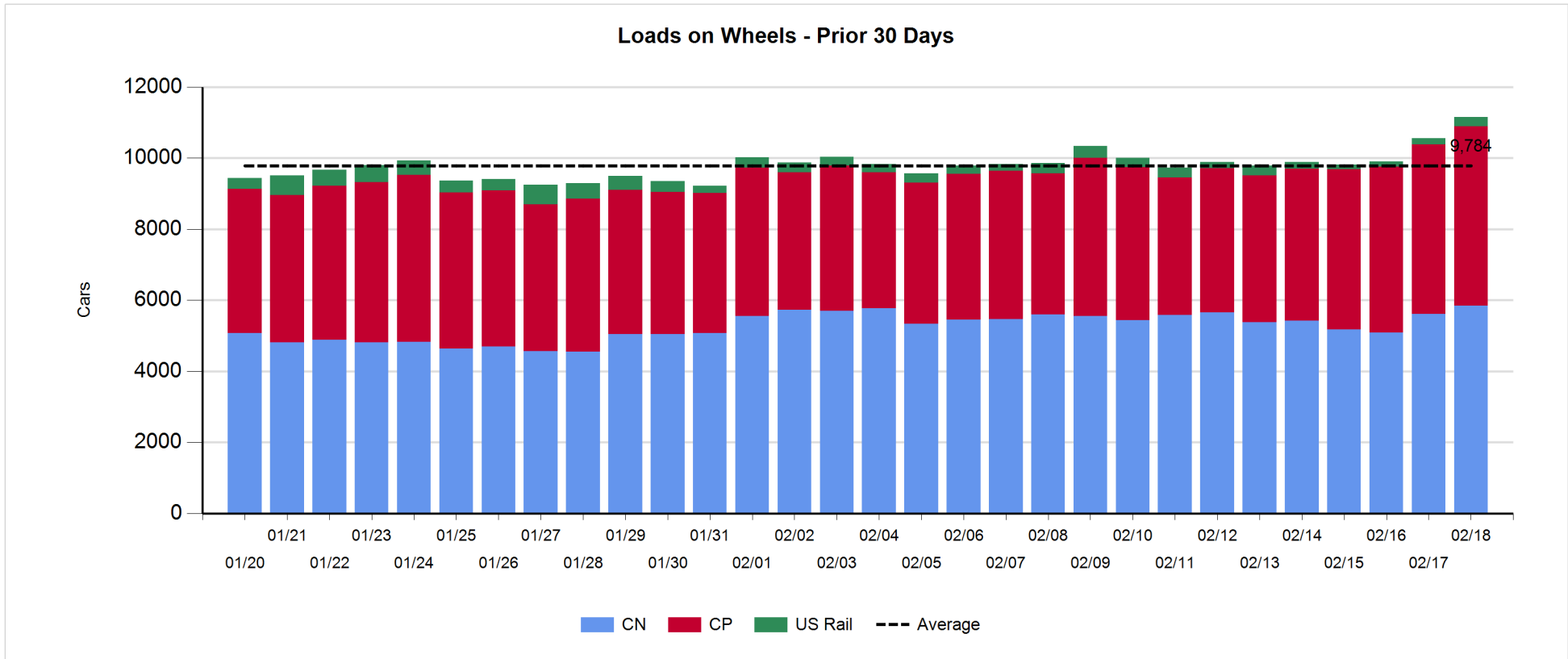
- CN and CP reported 609 cars unloaded at the three western ports - at 4,671 week 29 unloads came in marginally higher than the prior week reflecting a 50% jump in Prince Rupert and a slight decline in Vancouver week over week.
- Vancouver
 - 549 cars reported unloaded by CN and CP at the Port of Vancouver; CN - 264 and CP - 285
 - There are currently only 266 cars on hand at Vancouver waiting placement for unloading with less than 100 cars arriving at the port in the last 24 hours; CN and CP have approximately 725 cars enroute to Vancouver west of Alberta - 57% (3,850) of all cars destined to Vancouver are currently at origin locations awaiting movement
- Prince Rupert
 - At 1,688 pipeline volumes are at the 2nd highest level in the last 10 days. There are 600 cars west of Jasper however with the extent of week 29 rationing (1,000 orders) and 700 cars at origin; unloads are likely to continue to be challenged in the coming week.

Daily Loads on Wheels - 2/18/2018

	E Canada	Prince Rupert	Thunder Bay	USA/MEX	Vancouver	Total
CN	918	1,688		534	2,697	5,837
CP	425		5	536	4,088	5,054
Short Line	59				15	74
US Rail				187		187
	1,402	1,688	5	1,257	6,800	11,152

Change in Loads on Wheels - Prior 24 Hours

	E Canada	Prince Rupert	Thunder Bay	USA/MEX	Vancouver	Total
CN	116	197		0	-86	227
CP	159		0	-97	218	280
Short Line	1				1	2
US Rail				95		95
	276	197	0	-2	133	604

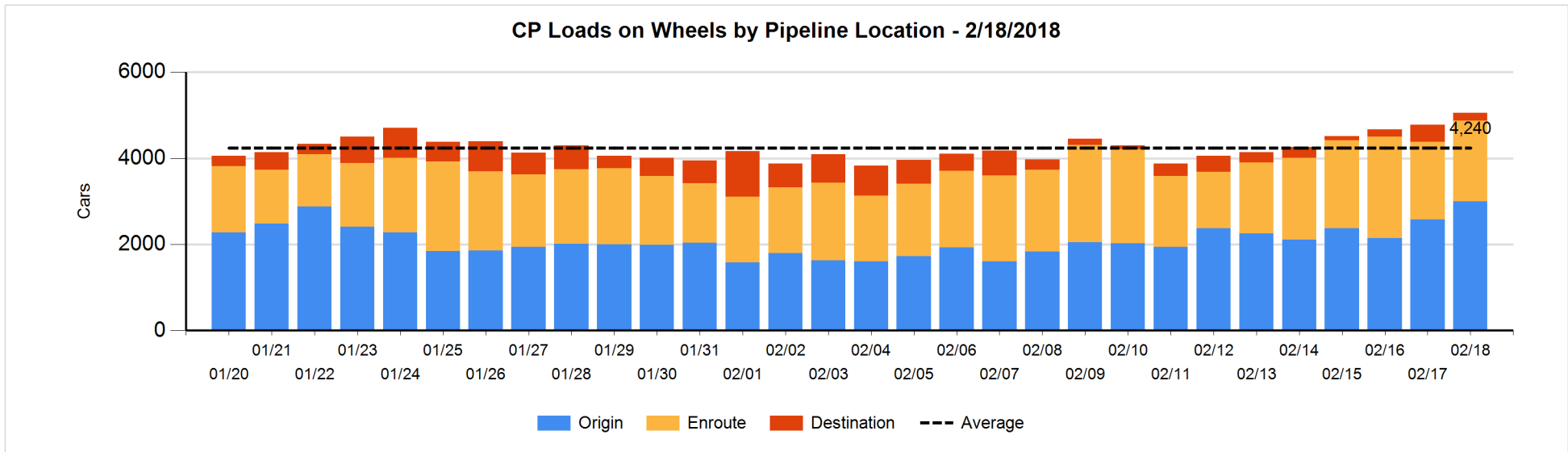
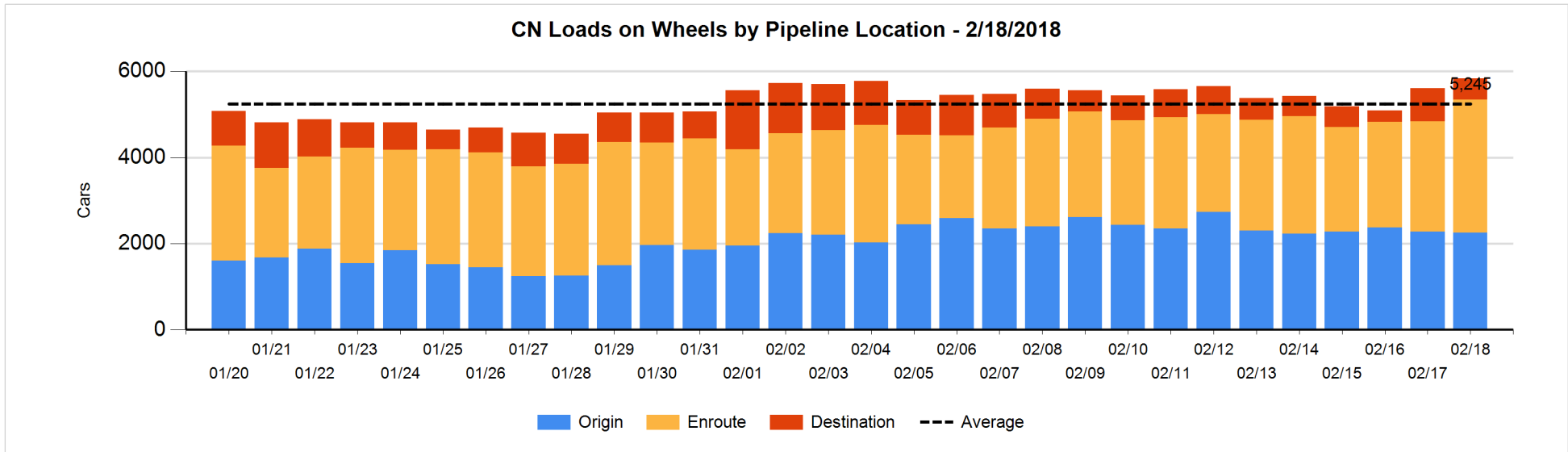


Daily Loads on Wheels By Pipeline Location - 2/18/2018

	E Canada	Prince Rupert	Thunder Bay	USA/MEX	Vancouver	Total
CN						
Origin	306	695		98	1,153	2,252
Enroute	599	905		416	1,169	3,089
Destination	13	88		20	375	496
	918	1,688		534	2,697	5,837
CP						
Origin	167			136	2,697	3,000
Enroute	235			354	1,281	1,870
Destination	23		5	46	110	184
	425		5	536	4,088	5,054
US Rail / Short Line						
Origin						
Enroute	51			168		219
Destination	8			19	15	42
	59			187	15	261

Change in Daily Loads on Wheels By Pipeline Location - Prior 24 Hours

	E Canada	Prince Rupert	Thunder Bay	USA/MEX	Vancouver	Total
CN						
Origin	49	56		-24	-101	-20
Enroute	68	201		21	234	524
Destination	-1	-60		3	-219	-277
	116	197		0	-86	227
CP						
Origin	134			-26	310	418
Enroute	25			-117	165	73
Destination	0		0	46	-257	-211
	159		0	-97	218	280
US Rail / Short Line						
Origin						
Enroute	1			98		99
Destination	0			-3	1	-2
	1			95	1	97

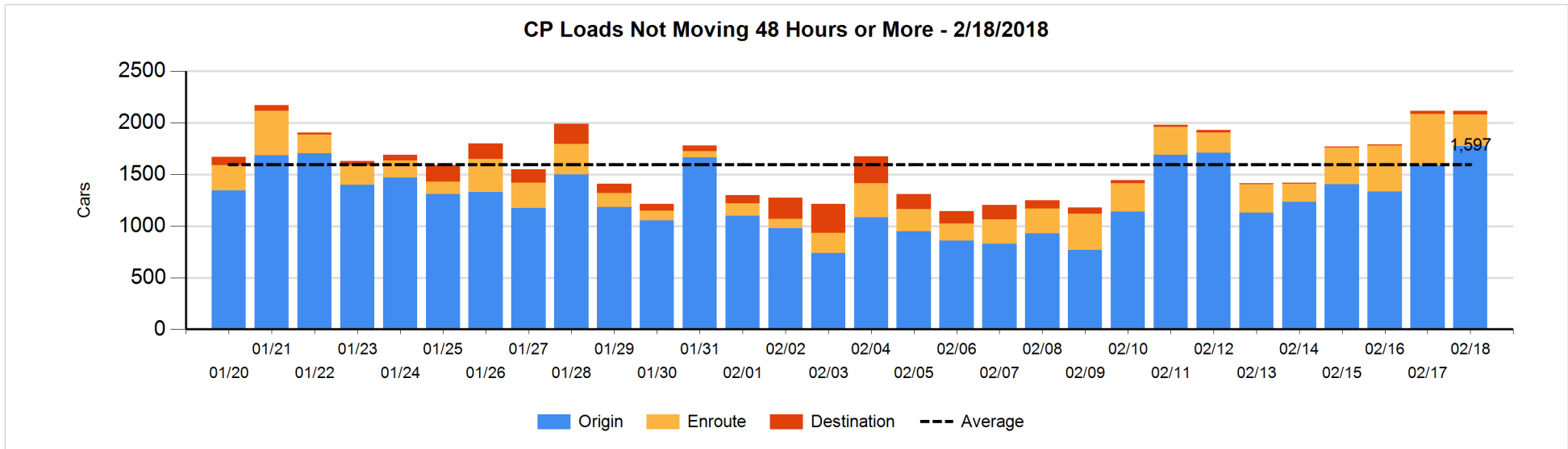
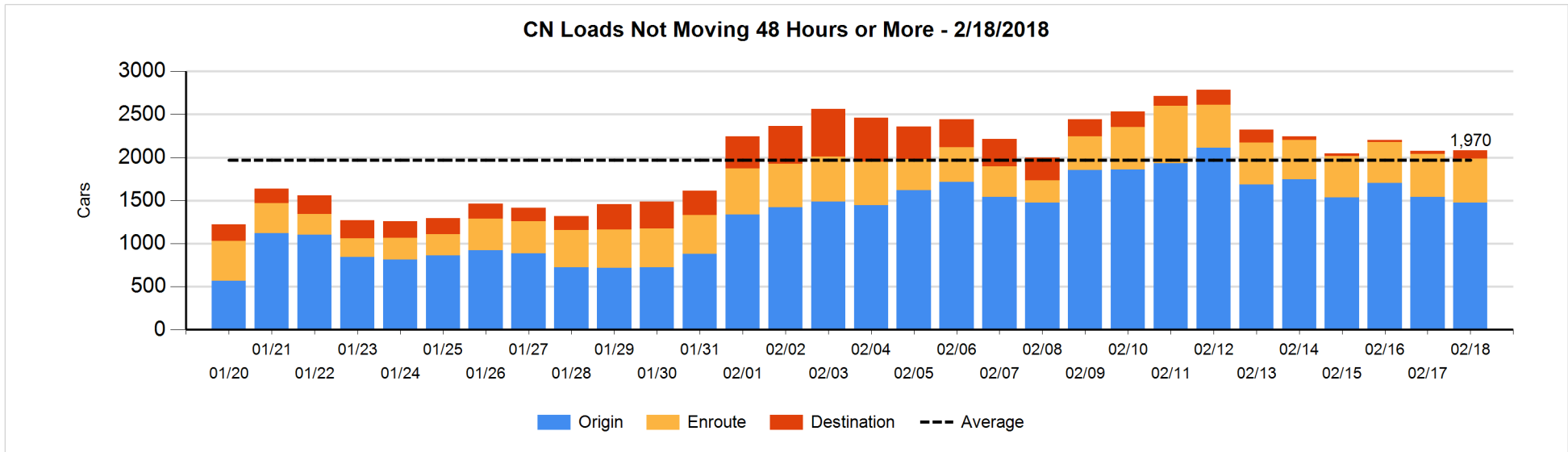


Loads Not Moving 48 Hours or More - 2/18/2018

	E Canada	Prince Rupert	Thunder Bay	USA/MEX	Vancouver	Total
CN						
Origin	154	324		98	899	1475
Enroute	119	113		173	106	511
Destination	8	4		16	70	98
	281	441		287	1075	2084
CP						
Origin	6			41	1726	1773
Enroute	84			120	102	306
Destination	23		5		8	36
	113		5	161	1836	2115
US Rail / Short Line						
Origin						
Enroute	10			30		40
Destination	8			18	6	32
	18			48	6	72

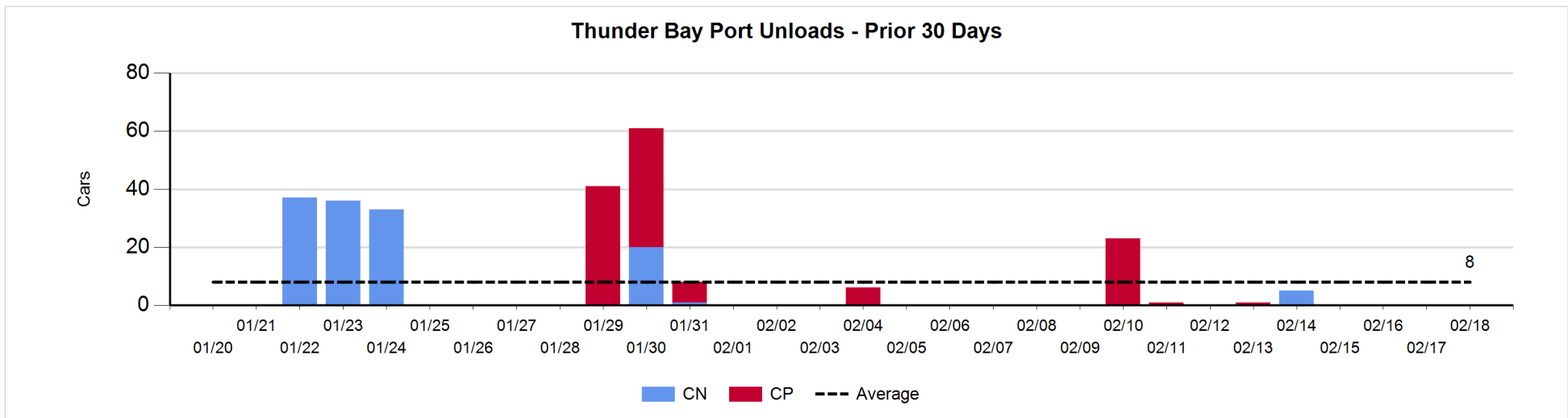
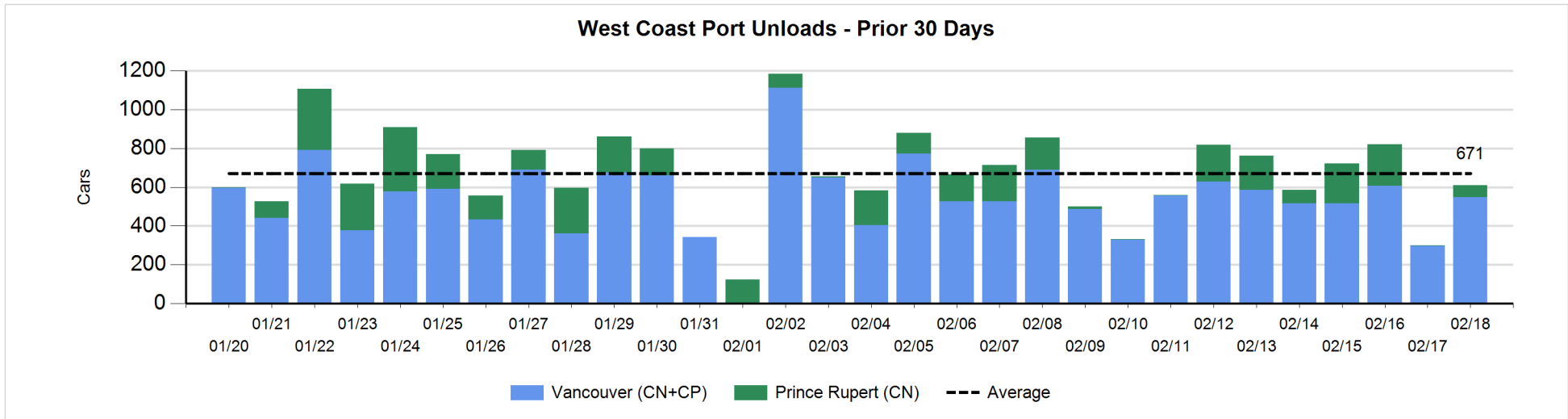
Change in Loads Not Moving 48 Hours or More - 2/18/2018

	E Canada	Prince Rupert	Thunder Bay	USA/MEX	Vancouver	Total
CN						
Origin	122	-105		41	-123	-65
Enroute	9	17		16	-31	11
Destination	-1	0		13	51	63
	130	-88		70	-103	9
CP						
Origin	-27			-17	233	189
Enroute	23			-107	-114	-198
Destination	23		1		-15	9
	19		1	-124	104	0
US Rail / Short Line						
Origin						
Enroute	8			4		12
Destination	8			1	3	12
	16			5	3	24



Port Unloads - 2/18/2018

	Prince Rupert	Vancouver	West Coast Total	Thunder Bay	Total
CN	60	264	324		324
CP		285	285		285
	60	549	609		609



Port Terminal Status

Vancouver

Daily Activity for 2/18/2018

	Cars Arrived	Cars Received in Interchange	Cars Delivered in Interchange	Cars Placed for Unloading	Loads on Wheels at Destination As of 2/18/2018
CN	69	32	44	342	375
CP		44	32	129	110
SRY					15

Port Unloads

	02/18	02/17	Week To Date	Last Week
CN	264	88	1,825	1,831
CP	285	209	1,873	2,056
SRY	1		49	65

Age Profile of Loaded Cars Waiting Placement for Unloading

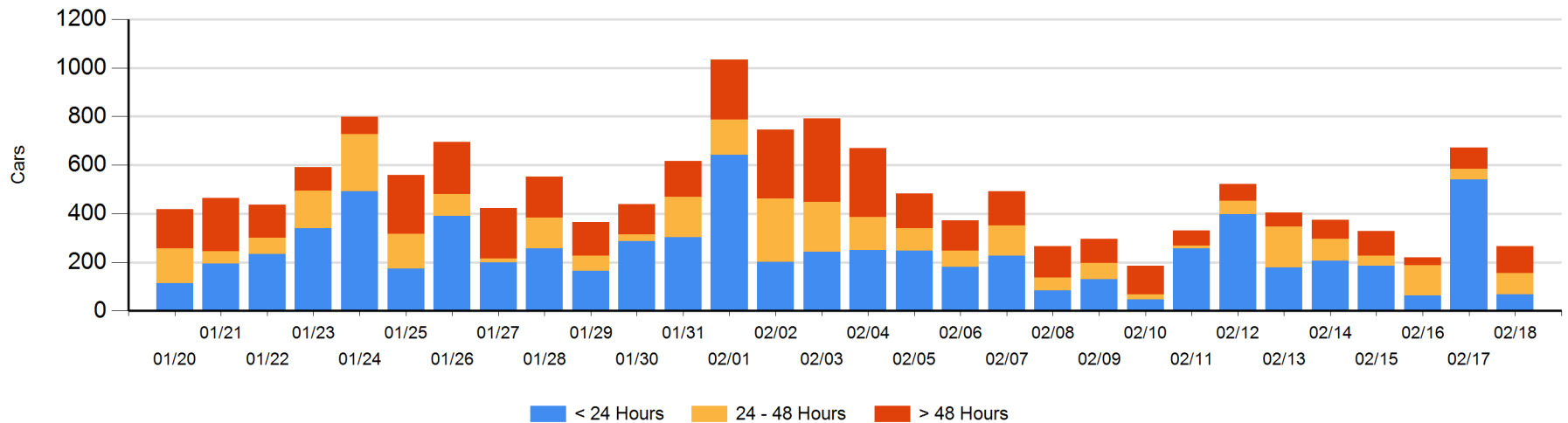
Today

	< 24 Hrs	24 - 48 Hrs	> 48-72 Hrs	> 72 Hrs	Total On Hand
CN	69	85	9	27	190
CP		2	20	55	77
SRY					0

Change in Last 24 Hours

	< 24 Hrs	24-48 Hrs	48 - 72 Hrs	> 72 Hrs
CN	-213	75	-17	25
CP	-259	-31	-30	46
SRY				

Loaded Cars on Hand Vancouver Waiting for Placement - Last 30 Days All Railways



Port Terminal Status

Prince Rupert

Daily Activity for 2/18/2018

Cars Arrived	Cars Received in Interchange	Cars Delivered in Interchange	Cars Placed for Unloading	Loads on Wheels at Destination As of 2/18/2018
				88
CN				

Port Unloads

	02/18	02/17	Week To Date	Last Week
CN	60	2	918	621

Age Profile of Loaded Cars Waiting Placement for Unloading

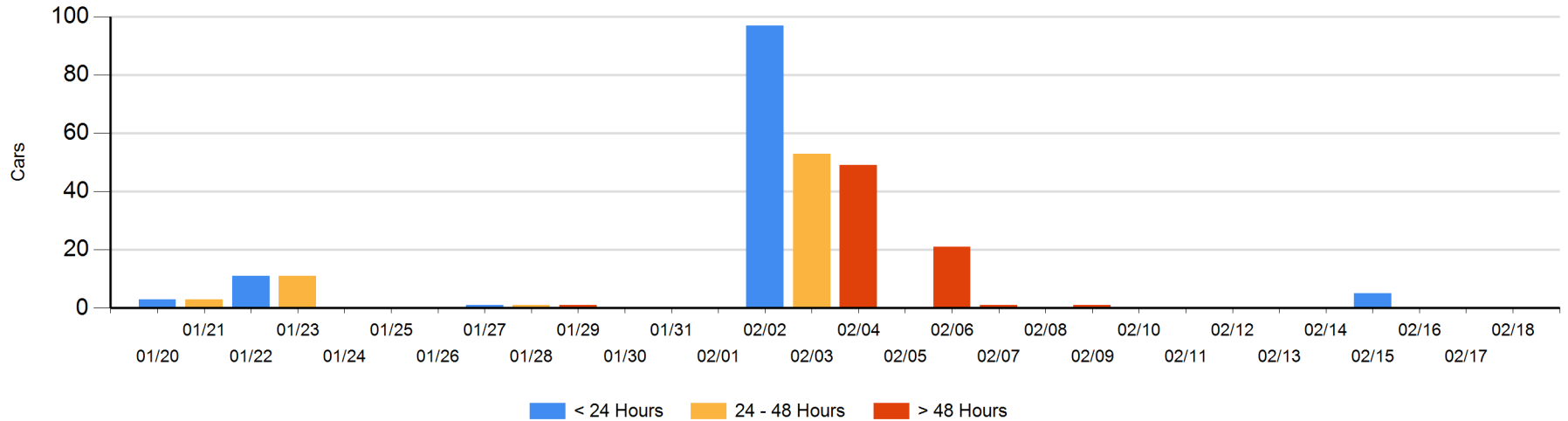
Today

< 24 Hrs	24 - 48 Hrs	> 48-72 Hrs	> 72 Hrs	Total On Hand
				0
CN				

Change in Last 24 Hours

< 24 Hrs	24-48 Hrs	48 - 72 Hrs	> 72 Hrs
CN			

Loaded Cars on Hand Prince Rupert Waiting for Placement - Last 30 Days All Railways



Port Terminal Status

Thunder Bay

Daily Activity for 2/18/2018

	Cars Arrived	Cars Received in Interchange	Cars Delivered in Interchange	Cars Placed for Unloading	Loads on Wheels at Destination As of 2/18/2018
CN					
CP					5

Port Unloads

	02/18	02/17	Week To Date	Last Week
CN			5	
CP			1	24

Age Profile of Loaded Cars Waiting Placement for Unloading

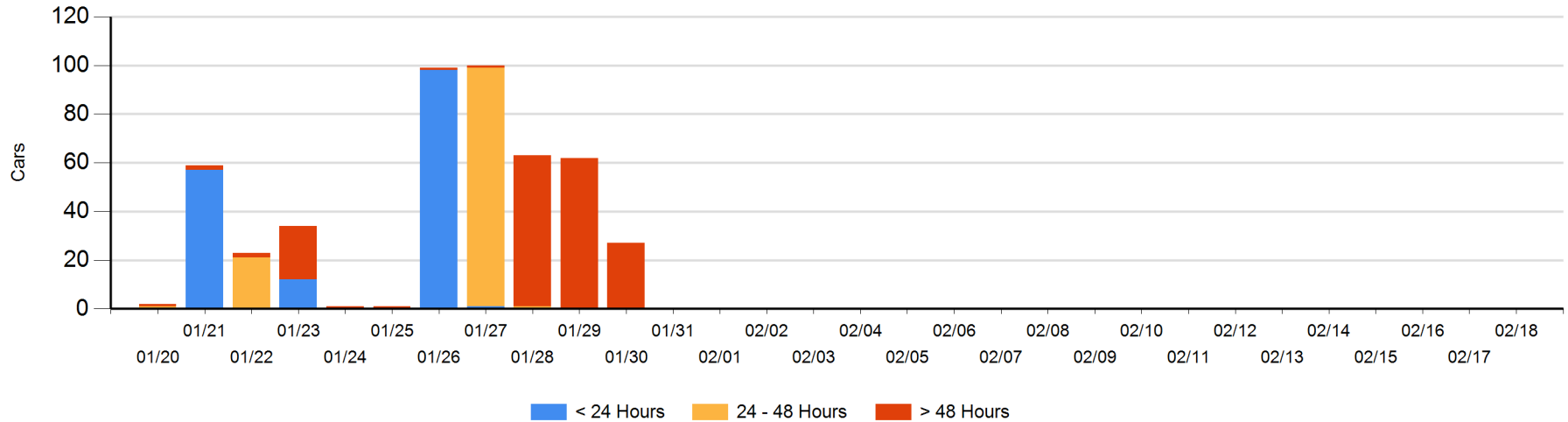
Today

	< 24 Hrs	24 - 48 Hrs	> 48-72 Hrs	> 72 Hrs	Total On Hand
CN					0
CP					0

Change in Last 24 Hours

	< 24 Hrs	24-48 Hrs	48 - 72 Hrs	> 72 Hrs
CN				
CP				

Loaded Cars on Hand Thunder Bay Waiting for Placement - Last 30 Days All Railways



Measurement Definitions

Loads on Wheels	<p>Count of loaded rail cars including all rail cars that have been released loaded at origin and have not been reported by the railway as unloaded at destination.</p> <p>Counts include all rail cars (hopper cars and boxcars) moving within a pipeline.</p>
Loads Not Moving	<p>Loaded rail cars for which the railways have not reported a movement event for 48 hours or more whether the rail car is at origin, enroute or at destination.</p>
Port Unloads	<p>Count of rail cars reported by railways as unloaded at the western port destinations of Vancouver, Prince Rupert and Thunder Bay.</p> <p>Unload counts include all rail cars (hopper cars and boxcars) unloaded by all receivers including major port terminals, transloaders and other receivers.</p>
Cars Arrived	<p>Count of rail cars reported as arrived at the destination railway terminal.</p>
Cars Received in Interchange	<p>Count of rail cars received in interchange by each railway within a destination railway terminal. Interchange activity is tracked for the Vancouver and Thunder Bay pipelines as applicable.</p>
Cars Delivered in Interchange	<p>Count of rail cars delivered in interchange by each railway within a destination railway terminal. Interchange activity is tracked for the Vancouver and Thunder Bay pipelines as applicable.</p>
Cars Placed for Unloading	<p>Count of rail cars reported by the railways as placed loaded at the receiver's facility for unloading.</p>
Loads on Wheels at Destination	<p>Count of rail cars that remain under load within the destination railway terminal including rail cars that have been reported as placed for unloading but not yet reported as unloaded.</p>
Waiting Placement for Unloading	<p>Count of rail cars that have been reported as arrived at the destination railway terminal but not reported as placed for unloading by the railway.</p> <p>For the Ports of Vancouver, Prince Rupert and Thunder Bay the count of rail cars waiting placement for unloading is categorized by age – i.e. the elapsed time from arrival at destination to the current report date.</p>