

## Loads on Wheels

- Loads on wheels declined during the prior 24 hours but remained above the 10,000 car threshold for the 4th consecutive day - loads on wheels now at 10,339 - 5% above the trailing 30 day average
- Loads on wheels decreased by 462 cars on a net basis reflecting declines on CN (-242) and CP (-246).
- CN volumes reflect declines in all corridors led by Vancouver corridor (-111). System wide CN loads on wheels now at 5,323 -in line with the trailing 30 day average.
- CP volumes declined in the Vancouver corridor (-339) offset by nominal increases in other corridors. CP system wide loads on wheels now at 4,758 - falling below the 5,000 car mark and 11% above the trailing 30 day average.
- Vancouver now at 6,003 - down 12% in the last 2 days and Prince Rupert at 1,535.

## Hopper Car Rationing

- **Preliminary indications are that CN rationed an estimated 2,000 hopper car orders for week 29 and in the order of 700+ for the current grain week (week 30).**

## Loads Not Moving

- The number of cars not moving for 48+ hours on CN and CP increased by 241 cars on a net basis in the prior 24 hours reflecting a decline in CN counts and an increase on CP - idle cars on CN and CP now at 5,009 - the highest level in the prior 30 days and a 37% increase in the last 6 days with the increase wholly attributable to CP.
- CN
  - The count of idle cars declined by 251 cars in the prior 24 hours - idle cars on CN now at 1,719, the lowest level in the prior 3 weeks - **1,000+ have been idle for 4 days or more - a 40% improvement in the last 24 hours; 600 have not moved in 7 days also a 40% improvement overnight and 400 for 10+ days.**
  - Vancouver (899) and Prince Rupert (385) represent 73% of all idle cars - 58% of all idle cars are dwelling at origin
- CP
  - CP counts increased by 18% (492 cars) in prior 24 hours - idle cars now at 3,290 - **a 132% increase in the last 6 days; nearly 1,800 of these cars have been idle for 4+ days - a 13% increase in the last 24 hours and 500 for 4+ days .**
  - Vancouver continues to account for the majority of idle cars (81%) with 82% of all idle cars dwelling at origin locations.

## Port Performance

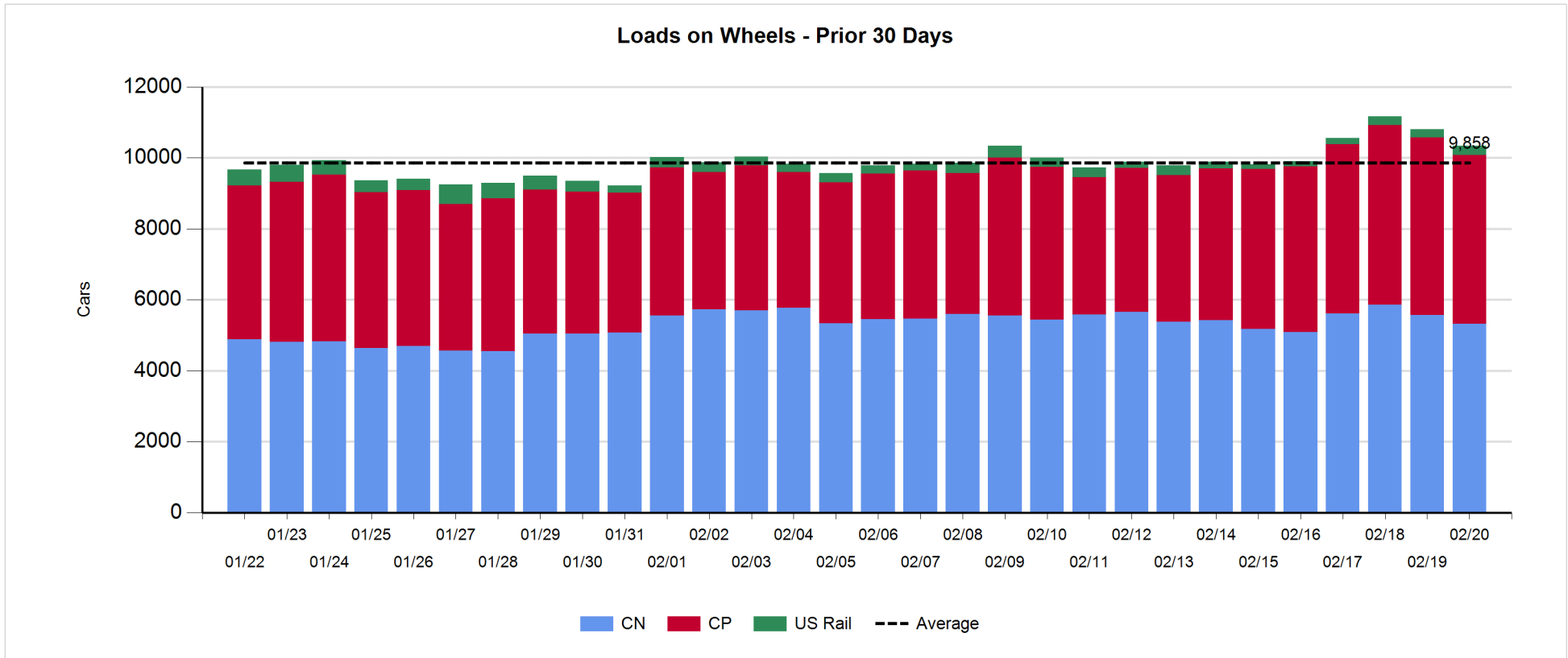
- CN and CP reported 706 cars unloaded at the three western ports - two days in, week 30 unloads are slightly behind last week's pace reflecting marginally higher unloads at Prince Rupert and lower unloads at Vancouver.
- Vancouver
  - 565 cars reported unloaded by CN and CP at the Port of Vancouver; CN - 141 and CP - 424
  - There are currently only 200 cars on hand at Vancouver waiting placement for unloading with fewer than 400 cars arriving at the port in the last 24 hours; CN and CP have approximately 700 cars enroute to Vancouver west of Alberta - 56% (3,300) of all cars destined to Vancouver are currently at origin locations awaiting movement - 75% on CP.
- Prince Rupert
  - There are currently less than 250 cars west of Jasper and nearly 450 cars (30% of loads on wheels) sitting at origin locations of which more than 90% have not moved for 2+ days; unloads are likely to continue to be challenged in the coming week.

**Daily Loads on Wheels - 2/20/2018**

	E Canada	Prince Rupert	Thunder Bay	USA/MEX	Vancouver	Total
CN	941	1,535		598	2,249	5,323
CP	422		5	610	3,721	4,758
Short Line	25				33	58
US Rail				200		200
	1,388	1,535	5	1,408	6,003	10,339

**Change in Loads on Wheels - Prior 24 Hours**

	E Canada	Prince Rupert	Thunder Bay	USA/MEX	Vancouver	Total
CN	-36	-81		-14	-111	-242
CP	16		0	77	-339	-246
Short Line	0				19	19
US Rail				7		7
	-20	-81	0	70	-431	-462

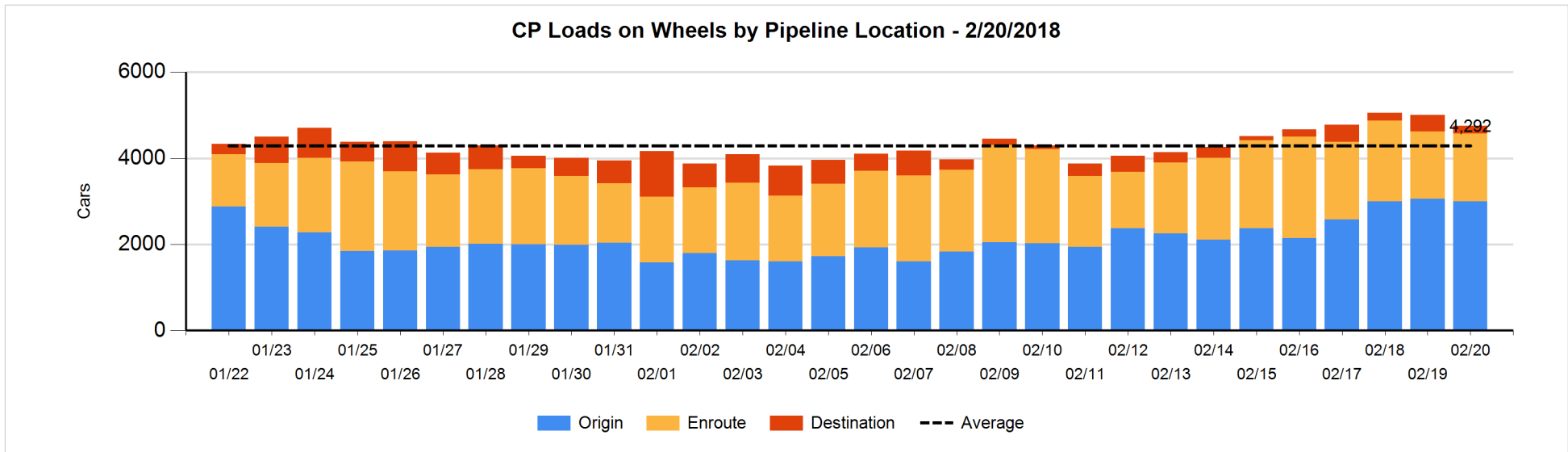
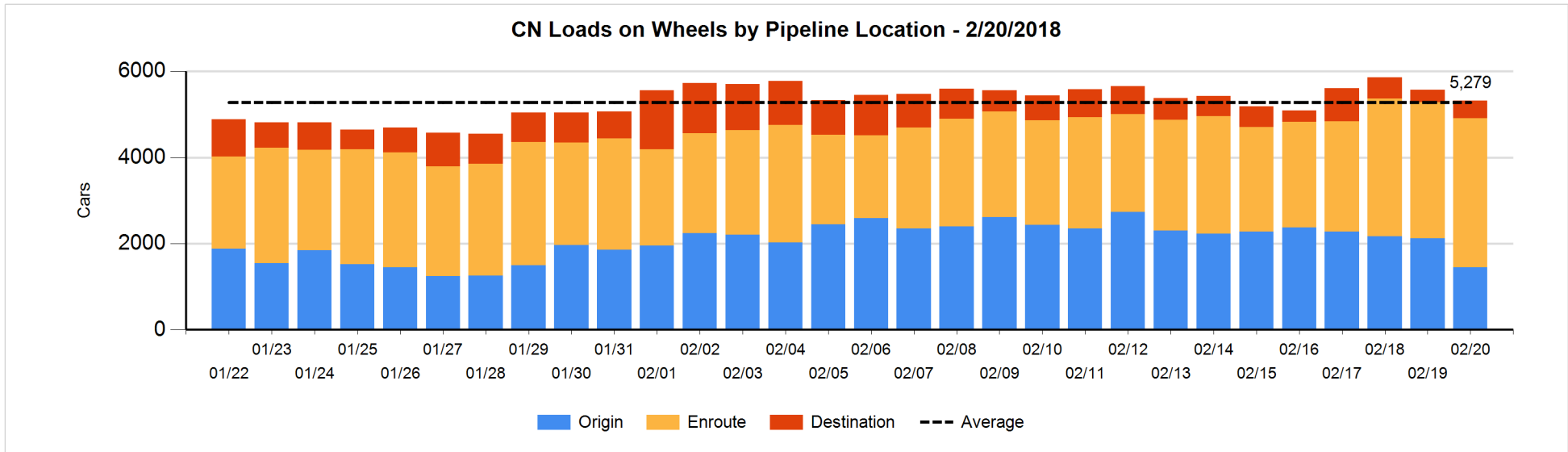


**Daily Loads on Wheels By Pipeline Location - 2/20/2018**

	E Canada	Prince Rupert	Thunder Bay	USA/MEX	Vancouver	Total
CN						
Origin	47	445		158	803	1,453
Enroute	857	893		367	1,344	3,461
Destination	37	197		73	102	409
	941	1,535		598	2,249	5,323
CP						
Origin	220			238	2,539	2,997
Enroute	202			350	1,023	1,575
Destination			5	22	159	186
	422		5	610	3,721	4,758
US Rail / Short Line						
Origin						
Enroute	24			176		200
Destination	1			24	33	58
	25			200	33	258

**Change in Daily Loads on Wheels By Pipeline Location - Prior 24 Hours**

	E Canada	Prince Rupert	Thunder Bay	USA/MEX	Vancouver	Total
CN						
Origin	-50	-315		0	-299	-664
Enroute	-12	96		-7	213	290
Destination	26	138		-7	-25	132
	-36	-81		-14	-111	-242
CP						
Origin	29			85	-178	-64
Enroute	-13			-4	27	10
Destination			0	-4	-188	-192
	16		0	77	-339	-246
US Rail / Short Line						
Origin						
Enroute	7			6		13
Destination	-7			1	19	13
	0			7	19	26

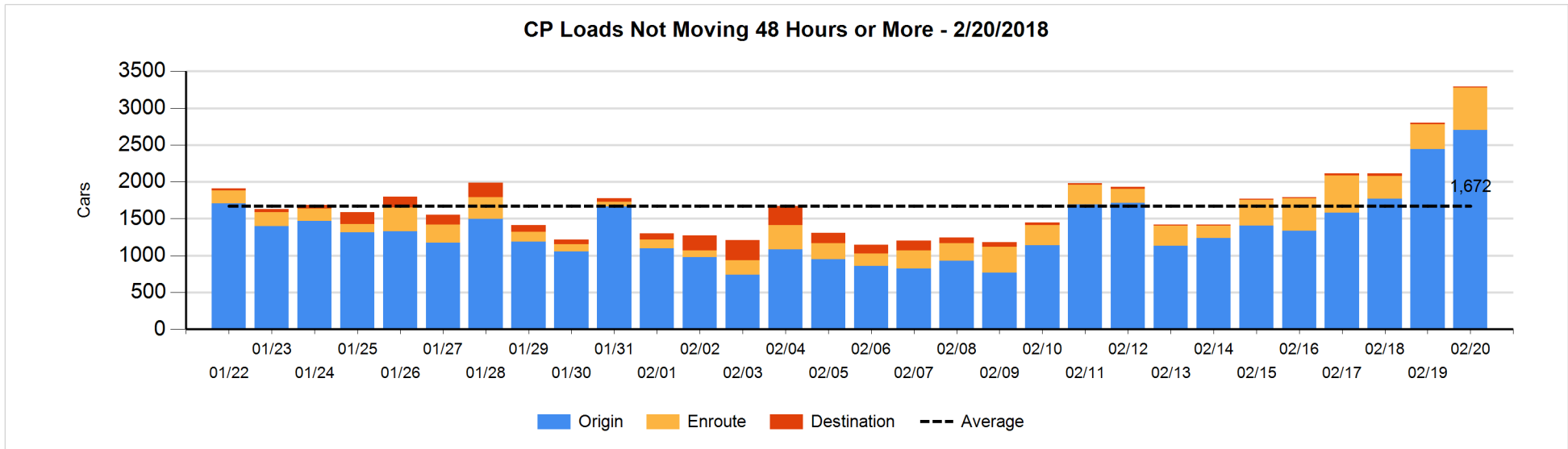
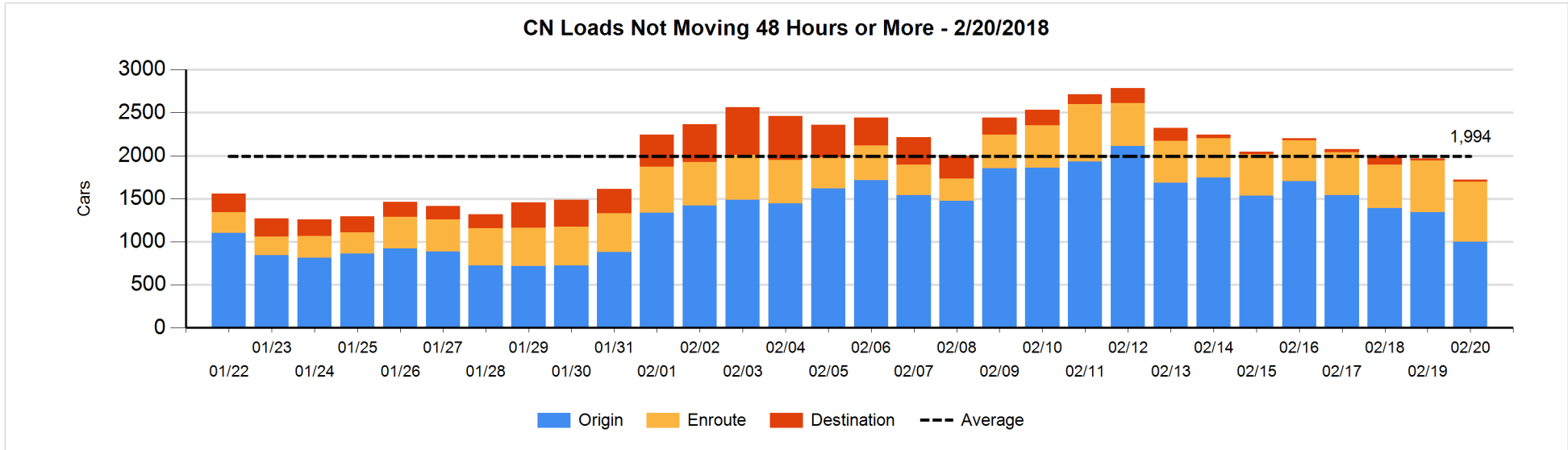


**Loads Not Moving 48 Hours or More - 2/20/2018**

	E Canada	Prince Rupert	Thunder Bay	USA/MEX	Vancouver	Total
<b>CN</b>						
Origin	22	264		53	662	1001
Enroute	175	120		169	230	694
Destination	6	1		10	7	24
	203	385		232	899	1719
<b>CP</b>						
Origin	167			135	2398	2700
Enroute	87			222	268	577
Destination			5		8	13
	254		5	357	2674	3290
<b>US Rail / Short Line</b>						
Origin						
Enroute	7			25		32
Destination	1			12	4	17
	8			37	4	49

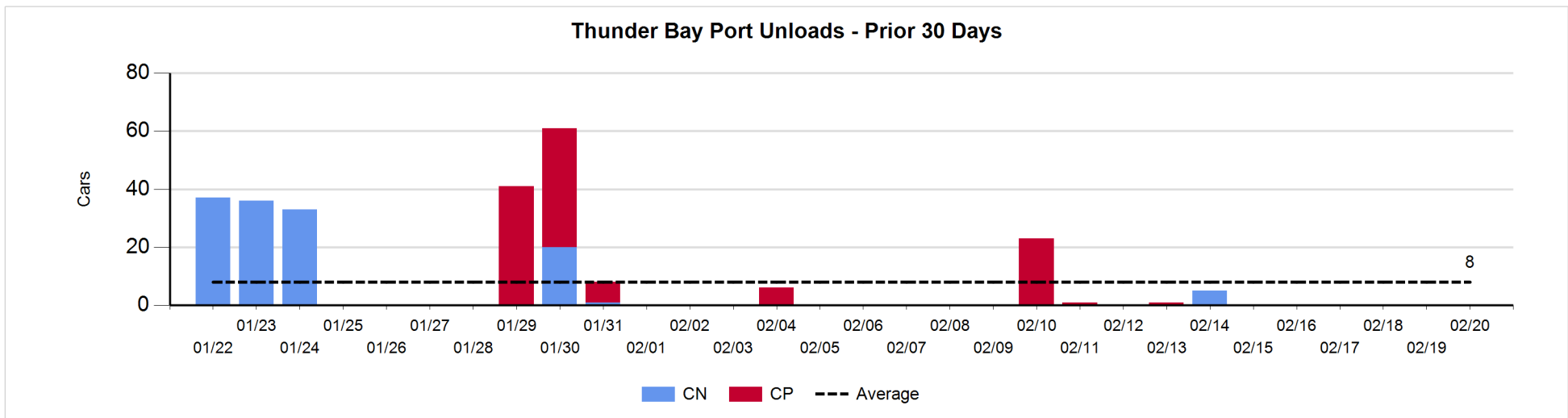
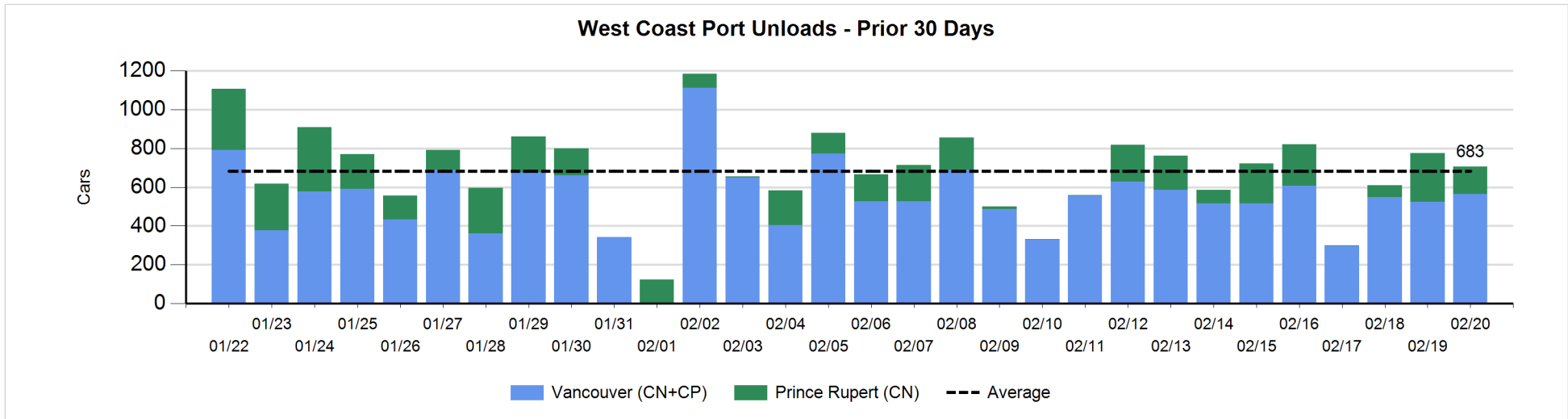
**Change in Loads Not Moving 48 Hours or More - 2/20/2018**

	E Canada	Prince Rupert	Thunder Bay	USA/MEX	Vancouver	Total
<b>CN</b>						
Origin	-50	-160		0	-129	-339
Enroute	91	-37		21	18	93
Destination	2	-3		-2	-2	-5
	43	-200		19	-113	-251
<b>CP</b>						
Origin	50			7	203	260
Enroute	42			59	136	237
Destination			0		-5	-5
	92		0	66	334	492
<b>US Rail / Short Line</b>						
Origin						
Enroute	-8			-2		-10
Destination	-7			-5	-4	-16
	-15			-7	-4	-26



Port Unloads - 2/20/2018

	Prince Rupert	Vancouver	West Coast Total	Thunder Bay	Total
CN	141	141	282		282
CP		424	424		424
	141	565	706		706



**Port Terminal Status**

**Vancouver**

Daily Activity for 2/20/2018

	Cars Arrived	Cars Received in Interchange	Cars Delivered in Interchange	Cars Placed for Unloading	Loads on Wheels at Destination As of 2/20/2018
CN	181	100	115	135	102
CP	202	90	101	392	159
SRY		26		9	33

**Port Unloads**

	02/20	02/19	Week To Date	Last Week
CN	141	256	397	1,825
CP	424	267	691	1,873
SRY	12	7	19	49

**Age Profile of Loaded Cars Waiting Placement for Unloading**

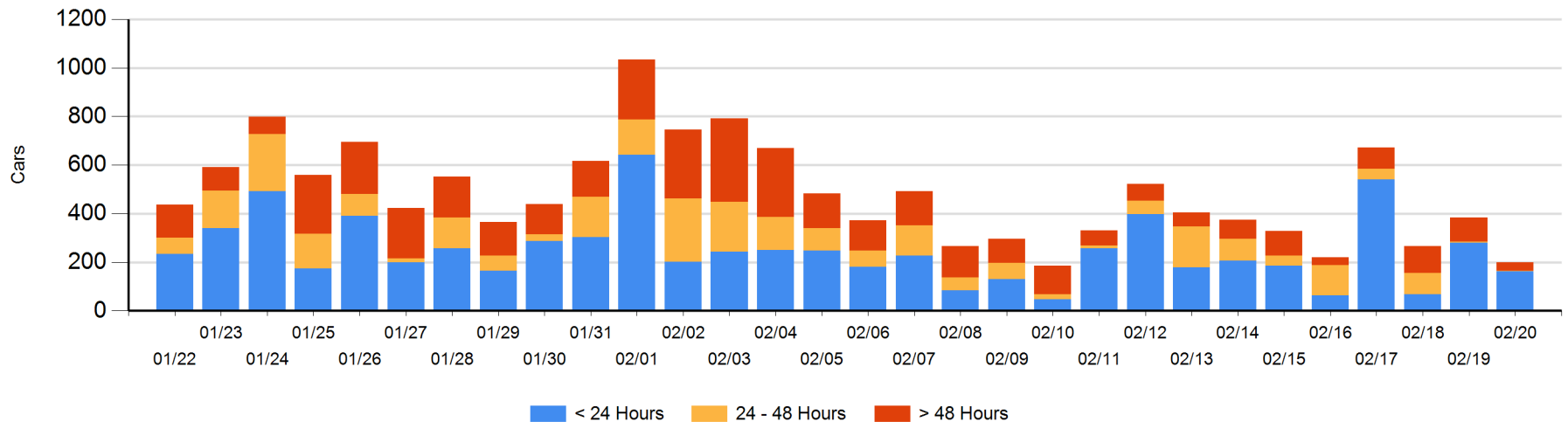
**Today**

	< 24 Hrs	24 - 48 Hrs	> 48-72 Hrs	> 72 Hrs	Total On Hand
CN	82	1	3	7	93
CP	80	2		25	107
SRY					0

**Change in Last 24 Hours**

	< 24 Hrs	24-48 Hrs	48 - 72 Hrs	> 72 Hrs
CN	81	-3	-21	-3
CP	-199	2	-1	-40
SRY				

**Loaded Cars on Hand Vancouver Waiting for Placement - Last 30 Days All Railways**





**Port Terminal Status**

**Prince Rupert**

Daily Activity for 2/20/2018

	Cars Arrived	Cars Received in Interchange	Cars Delivered in Interchange	Cars Placed for Unloading	Loads on Wheels at Destination As of 2/20/2018
CN	272			278	197

**Port Unloads**

	02/20	02/19	Week To Date	Last Week
CN	141	253	394	918

**Age Profile of Loaded Cars Waiting Placement for Unloading**

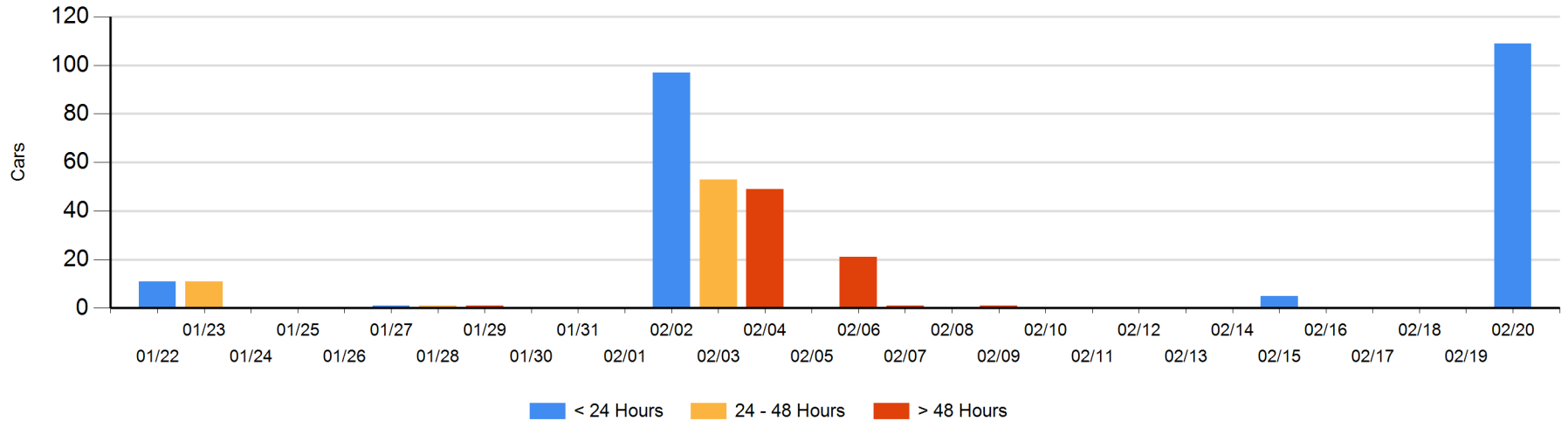
**Today**

	< 24 Hrs	24 - 48 Hrs	> 48-72 Hrs	> 72 Hrs	Total On Hand
CN	109				109

**Change in Last 24 Hours**

	< 24 Hrs	24-48 Hrs	48 - 72 Hrs	> 72 Hrs
CN	109			

Loaded Cars on Hand Prince Rupert Waiting for Placement - Last 30 Days All Railways



**Port Terminal Status**

**Thunder Bay**

Daily Activity for 2/20/2018

Cars Arrived	Cars Received in Interchange	Cars Delivered in Interchange	Cars Placed for Unloading	Loads on Wheels at Destination As of 2/20/2018
CN				
CP				5

**Port Unloads**

	02/20	02/19	Week To Date	Last Week
CN				5
CP				1

**Age Profile of Loaded Cars Waiting Placement for Unloading**

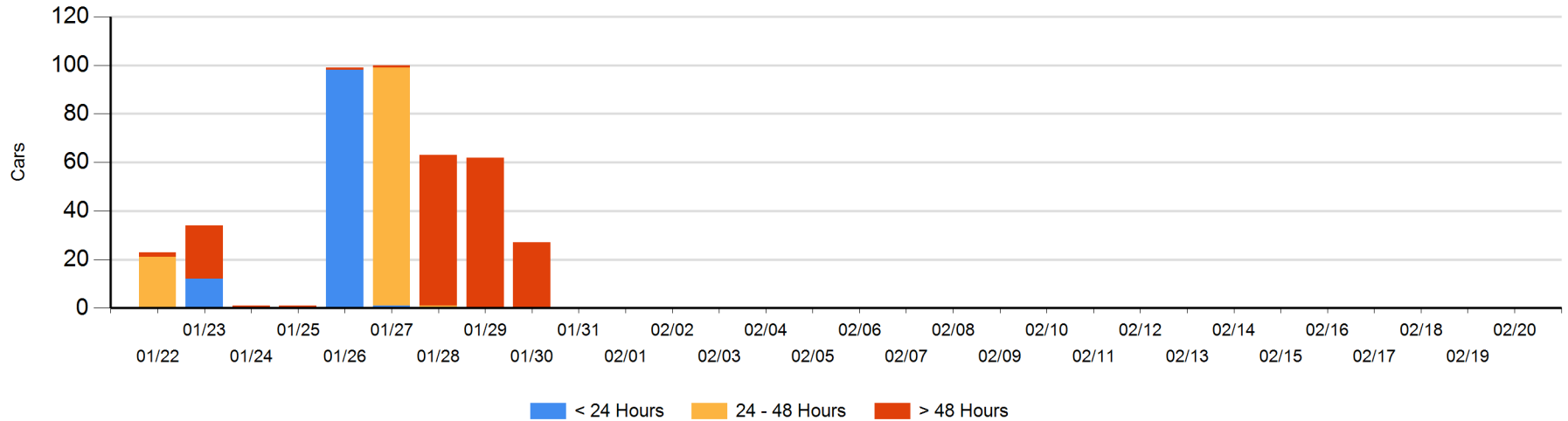
**Today**

	< 24 Hrs	24 - 48 Hrs	> 48-72 Hrs	> 72 Hrs	Total On Hand
CN					0
CP					0

**Change in Last 24 Hours**

	< 24 Hrs	24-48 Hrs	48 - 72 Hrs	> 72 Hrs
CN				
CP				

**Loaded Cars on Hand Thunder Bay Waiting for Placement - Last 30 Days All Railways**



## Measurement Definitions

Loads on Wheels	<p>Count of loaded rail cars including all rail cars that have been released loaded at origin and have not been reported by the railway as unloaded at destination.</p> <p>Counts include all rail cars (hopper cars and boxcars) moving within a pipeline.</p>
Loads Not Moving	<p>Loaded rail cars for which the railways have not reported a movement event for 48 hours or more whether the rail car is at origin, enroute or at destination.</p>
Port Unloads	<p>Count of rail cars reported by railways as unloaded at the western port destinations of Vancouver, Prince Rupert and Thunder Bay.</p> <p>Unload counts include all rail cars (hopper cars and boxcars) unloaded by all receivers including major port terminals, transloaders and other receivers.</p>
Cars Arrived	<p>Count of rail cars reported as arrived at the destination railway terminal.</p>
Cars Received in Interchange	<p>Count of rail cars received in interchange by each railway within a destination railway terminal. Interchange activity is tracked for the Vancouver and Thunder Bay pipelines as applicable.</p>
Cars Delivered in Interchange	<p>Count of rail cars delivered in interchange by each railway within a destination railway terminal. Interchange activity is tracked for the Vancouver and Thunder Bay pipelines as applicable.</p>
Cars Placed for Unloading	<p>Count of rail cars reported by the railways as placed loaded at the receiver's facility for unloading.</p>
Loads on Wheels at Destination	<p>Count of rail cars that remain under load within the destination railway terminal including rail cars that have been reported as placed for unloading but not yet reported as unloaded.</p>
Waiting Placement for Unloading	<p>Count of rail cars that have been reported as arrived at the destination railway terminal but not reported as placed for unloading by the railway.</p> <p>For the Ports of Vancouver, Prince Rupert and Thunder Bay the count of rail cars waiting placement for unloading is categorized by age – i.e. the elapsed time from arrival at destination to the current report date.</p>