

## Loads on Wheels

- Loads on wheels declined nominally (41 cars) during in the prior 24 hours - loads on wheels now at 9,760 - remaining below the 10,000 car threshold for the third consecutive day and 3% below the trailing 30 day average
- The decline in loads on wheels reflects a decline on CN (-267) and an increase on CP (+304).
- CN volumes reflect declines in all corridors other than Prince Rupert (+64). System wide CN loads on wheels now at 4,703 - below the 5,000 car threshold for the second time in 30 days and 15% below the trailing 30 day average.
- CP volumes increased primarily in the US corridor. CP system wide loads on wheels now at 4,623 - 7% above the trailing 30 day average.
- Vancouver now at 6,349 and Prince Rupert at 1,237

## Hopper Car Rationing

- **CN rationed 800+ hopper car orders for week 30 and an estimated 1,000 for the current grain week (31).**

## Loads Not Moving

- The number of cars not moving for 48+ hours on CN and CP declined by 414 cars (15%) in the prior 24 - idle cars on CN and CP now stand at 2,434 - the lowest level in nearly 30 days. The count of idle cars has now declined for three consecutive days having declined by 40% during that period reflecting declines on both railways. The number of idle cars are at 30 day and 14 day lows for CN and CP respectively indicating that fluidity is returning to both railway networks.
- CN
  - The count of idle cars decreased by 76 cars in the prior 24 hours - idle cars on CN now at 964 - **400+ have been idle for 4+ days - a 60% improvement in the last 2 days; 200+ have not moved in 7 days and 100+ for 10+ days.**
  - Vancouver (600) represents 62% of all idle cars - 55% of all idle cars are dwelling at origin
- CP
  - CP counts declined by 338 cars in prior 24 hours - idle cars now at 1,470 - **1,000 of these cars have been idle for 4+ days - a 27% improvement since yesterday; 400+ have not moved for 7+ days and 300+ for 10+ days.**
  - Vancouver continues to account for the majority of idle cars (82%) with 79% of all idle cars dwelling at origin locations.

## Port Performance

- CN and CP reported 755 cars unloaded at the three western ports - 3 days in, week 31 unloads are tracking 500 unloads higher than the prior week reflecting a 20% decline in Prince Rupert unloads and higher unloads at Vancouver.
- Vancouver
  - 577 cars reported unloaded by CN and CP at the Port of Vancouver; CN - 181 and CP - 396
  - There are currently 548 cars on hand at Vancouver waiting placement for unloading with 500+ cars arriving at the port in the last 24 hours; CN and CP have roughly 850 cars enroute to Vancouver west of Alberta split evenly between the two railways - 40% (2,500 cars) of all cars destined to Vancouver are currently at origin locations awaiting movement with more than 1,500 of these not having moved for 48+ hours.
- Prince Rupert
  - There are currently 430 cars west of Jasper and 250+ cars (20% of loads on wheels) sitting at origin locations - a slight improvement in the last 24 hours; unloads are likely to continue to be challenged in the coming week.

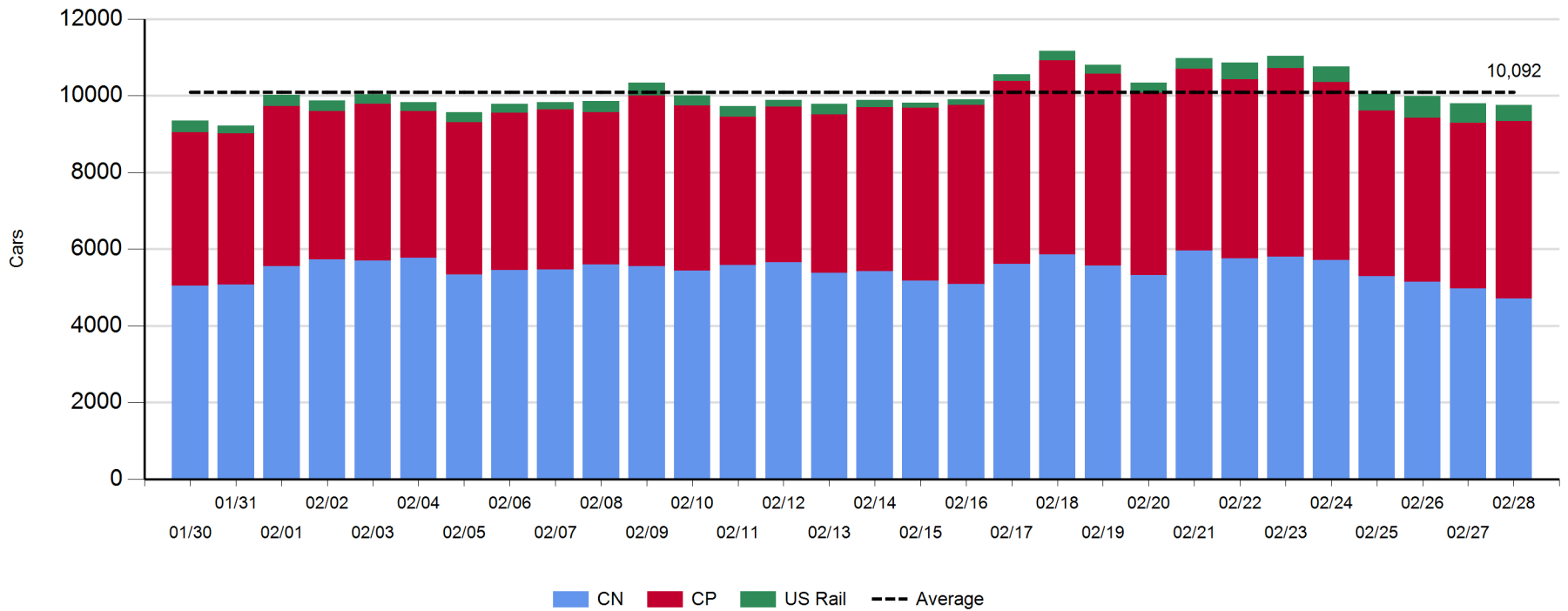
**Daily Loads on Wheels - 2/28/2018**

	E Canada	Prince Rupert	Thunder Bay	USA/MEX	Vancouver	Total
CN	353	1,237		332	2,781	4,703
CP	360		7	701	3,555	4,623
Short Line	35				13	48
US Rail				386		386
	748	1,237	7	1,419	6,349	9,760

**Change in Loads on Wheels - Prior 24 Hours**

	E Canada	Prince Rupert	Thunder Bay	USA/MEX	Vancouver	Total
CN	-60	64		-51	-220	-267
CP	4		0	281	19	304
Short Line	8				6	14
US Rail				-92		-92
	-48	64	0	138	-195	-41

**Loads on Wheels - Prior 30 Days**

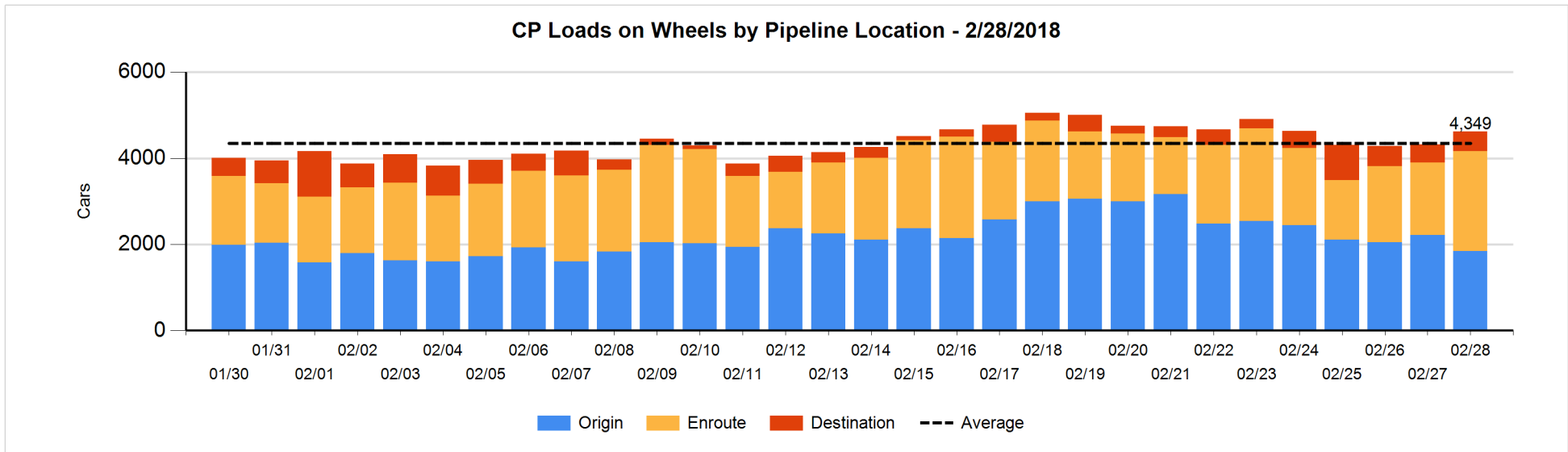
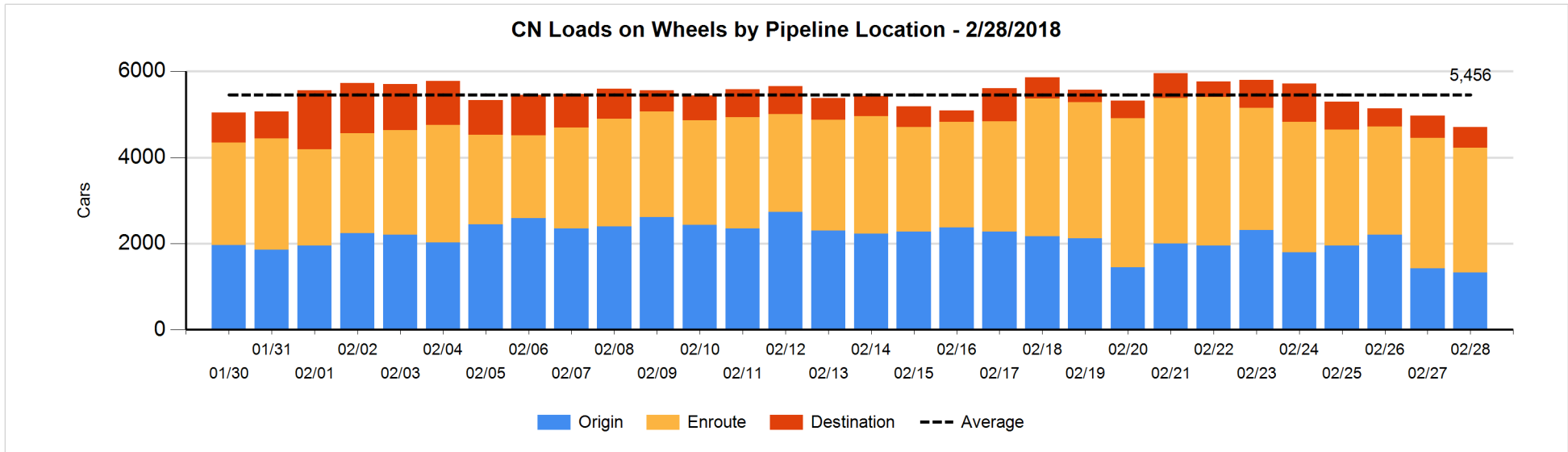


**Daily Loads on Wheels By Pipeline Location - 2/28/2018**

	E Canada	Prince Rupert	Thunder Bay	USA/MEX	Vancouver	Total
CN						
Origin	20	247		122	944	1,333
Enroute	286	979		172	1,459	2,896
Destination	47	11		38	378	474
	353	1,237		332	2,781	4,703
CP						
Origin	30			284	1,529	1,843
Enroute	329		2	367	1,629	2,327
Destination	1		5	50	397	453
	360		7	701	3,555	4,623
US Rail / Short Line						
Origin						
Enroute	22			197		219
Destination	13			189	13	215
	35			386	13	434

**Change in Daily Loads on Wheels By Pipeline Location - Prior 24 Hours**

	E Canada	Prince Rupert	Thunder Bay	USA/MEX	Vancouver	Total
CN						
Origin	0	-79		18	-29	-90
Enroute	-95	176		-60	-159	-138
Destination	35	-33		-9	-32	-39
	-60	64		-51	-220	-267
CP						
Origin	1			91	-469	-377
Enroute	2		0	159	492	653
Destination	1		0	31	-4	28
	4		0	281	19	304
US Rail / Short Line						
Origin						
Enroute	1			-36		-35
Destination	7			-56	6	-43
	8			-92	6	-78

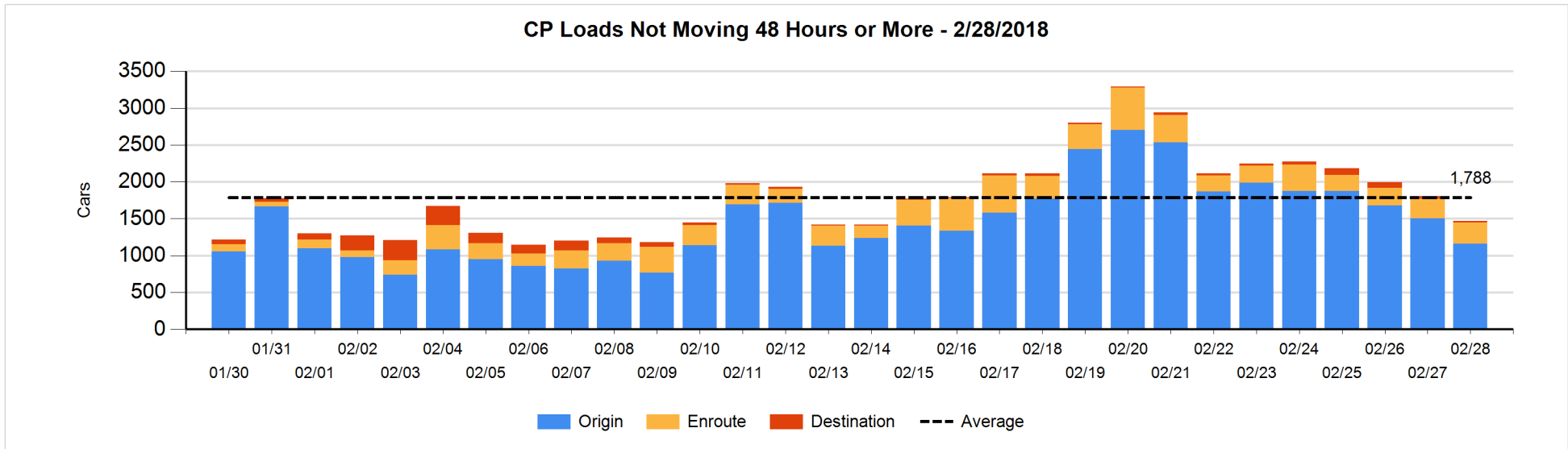
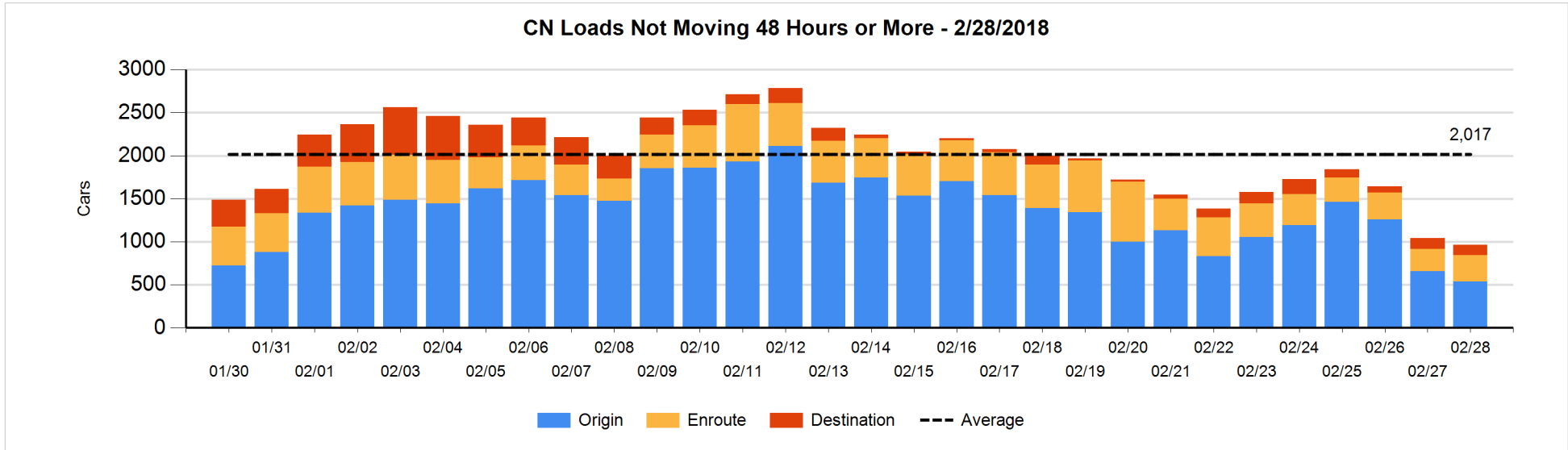


**Loads Not Moving 48 Hours or More - 2/28/2018**

	E Canada	Prince Rupert	Thunder Bay	USA/MEX	Vancouver	Total
<b>CN</b>						
Origin	20	6		94	416	536
Enroute	96	47		91	74	308
Destination				10	110	120
	116	53		195	600	964
<b>CP</b>						
Origin	25			59	1073	1157
Enroute	112			63	117	292
Destination			5	3	13	21
	137		5	125	1203	1470
<b>US Rail / Short Line</b>						
Origin						
Enroute	15			68		83
Destination				123	4	127
	15			191	4	210

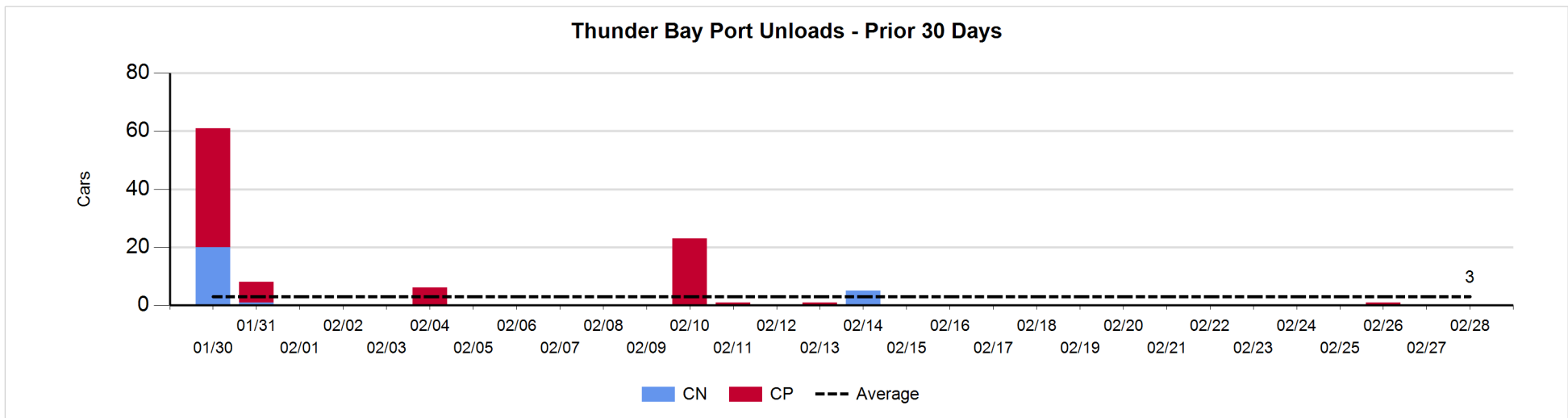
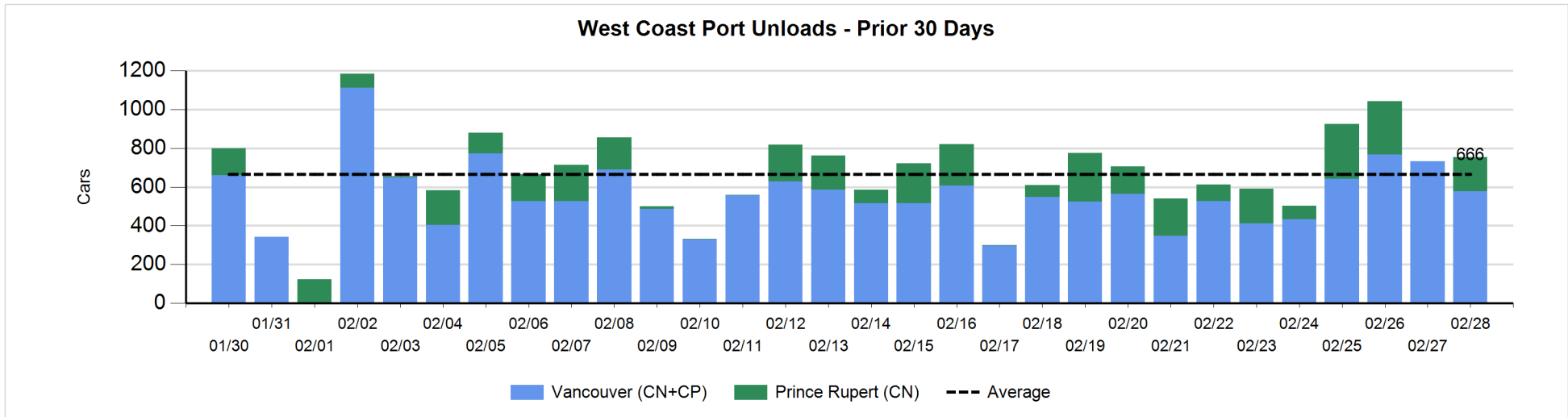
**Change in Loads Not Moving 48 Hours or More - 2/28/2018**

	E Canada	Prince Rupert	Thunder Bay	USA/MEX	Vancouver	Total
<b>CN</b>						
Origin	0	-206		20	62	-124
Enroute	11	20		35	-15	51
Destination				1	-4	-3
	11	-186		56	43	-76
<b>CP</b>						
Origin	19			-108	-256	-345
Enroute	98			-2	-70	26
Destination			0	0	-19	-19
	117		0	-110	-345	-338
<b>US Rail / Short Line</b>						
Origin						
Enroute	1			-35		-34
Destination				-11	0	-11
	1			-46	0	-45



Port Unloads - 2/28/2018

	Prince Rupert	Vancouver	West Coast Total	Thunder Bay	Total
CN	178	181	359		359
CP		396	396		396
	178	577	755		755



## Port Terminal Status

### Vancouver

Daily Activity for 2/28/2018

	Cars Arrived	Cars Received in Interchange	Cars Delivered in Interchange	Cars Placed for Unloading	Loads on Wheels at Destination As of 2/28/2018
CN	181	24	210	155	378
CP	367	210	31	288	397
SRY		7		4	13

### Port Unloads

	02/28	02/27	Week To Date	Last Week
CN	181	356	858	1,588
CP	396	376	1,218	1,864
SRY	5	13	39	70

## Age Profile of Loaded Cars Waiting Placement for Unloading

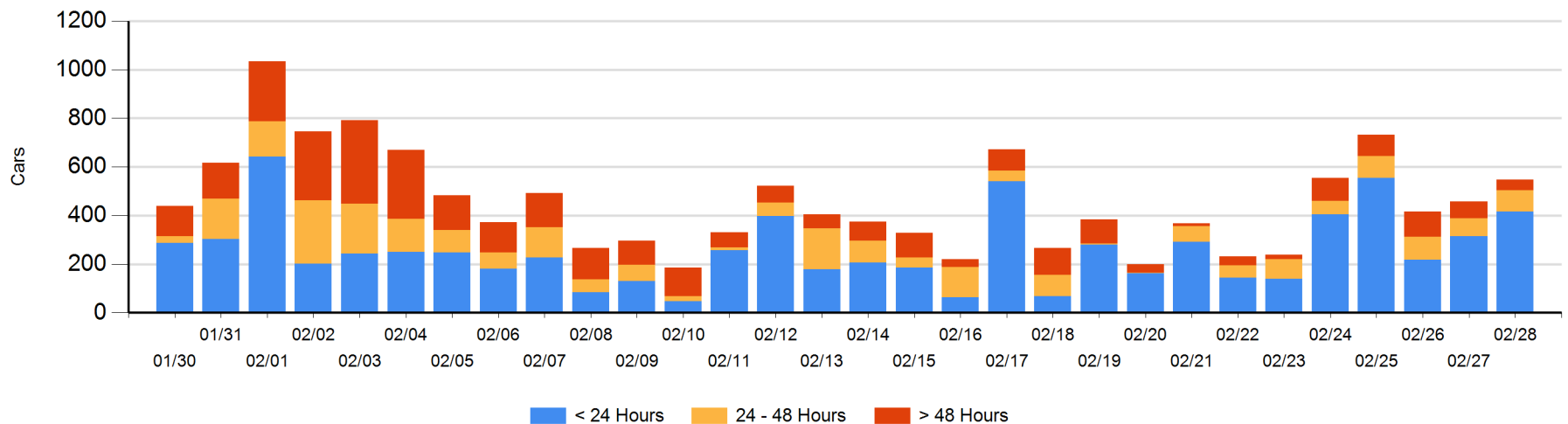
### Today

	< 24 Hrs	24 - 48 Hrs	> 48-72 Hrs	> 72 Hrs	Total On Hand
CN	169	23		16	208
CP	246	66	7	21	340
SRY					0

### Change in Last 24 Hours

	< 24 Hrs	24-48 Hrs	48 - 72 Hrs	> 72 Hrs
CN	145	-44	-7	3
CP	-44	59	-11	-11
SRY				

Loaded Cars on Hand Vancouver Waiting for Placement - Last 30 Days All Railways





**Port Terminal Status**

**Prince Rupert**

Daily Activity for 2/28/2018

	Cars Arrived	Cars Received in Interchange	Cars Delivered in Interchange	Cars Placed for Unloading	Loads on Wheels at Destination As of 2/28/2018
CN	145			145	11

**Port Unloads**

	02/28	02/27	Week To Date	Last Week
CN	178		453	1,204

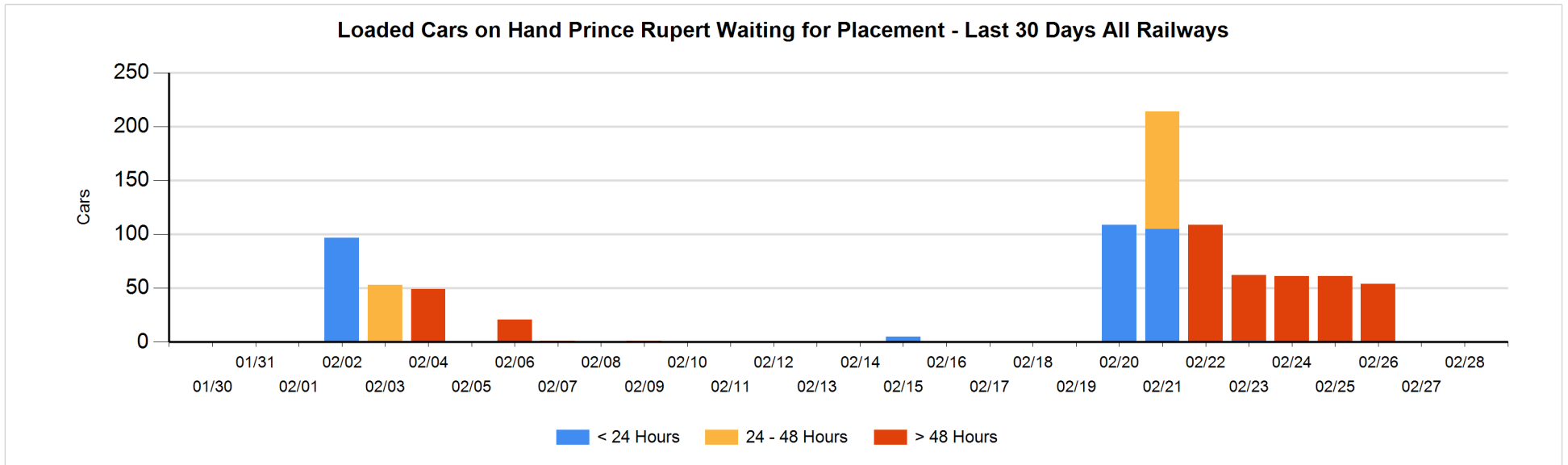
**Age Profile of Loaded Cars Waiting Placement for Unloading**

**Today**

	< 24 Hrs	24 - 48 Hrs	> 48-72 Hrs	> 72 Hrs	Total On Hand
CN					0

**Change in Last 24 Hours**

	< 24 Hrs	24-48 Hrs	48 - 72 Hrs	> 72 Hrs
CN				



**Port Terminal Status**

**Thunder Bay**

Daily Activity for 2/28/2018

	Cars Arrived	Cars Received in Interchange	Cars Delivered in Interchange	Cars Placed for Unloading	Loads on Wheels at Destination As of 2/28/2018
CN					
CP					5

**Port Unloads**

	02/28	02/27	Week To Date	Last Week
CN				
CP			1	

**Age Profile of Loaded Cars Waiting Placement for Unloading**

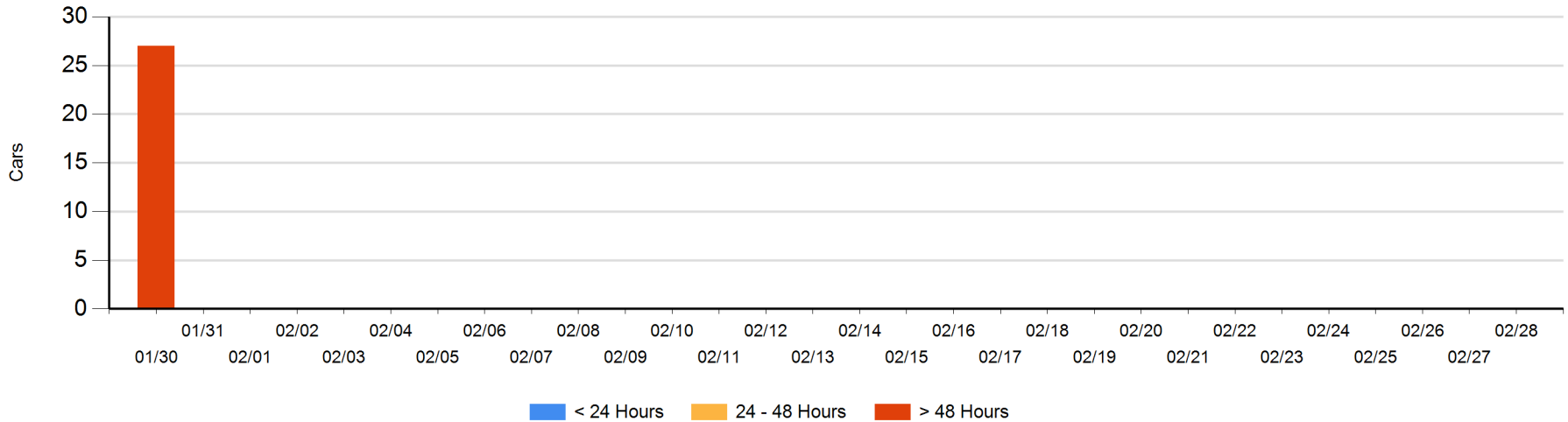
**Today**

	< 24 Hrs	24 - 48 Hrs	> 48-72 Hrs	> 72 Hrs	Total On Hand
CN					0
CP					0

**Change in Last 24 Hours**

	< 24 Hrs	24-48 Hrs	48 - 72 Hrs	> 72 Hrs
CN				
CP				

**Loaded Cars on Hand Thunder Bay Waiting for Placement - Last 30 Days All Railways**



## Measurement Definitions

Loads on Wheels	<p>Count of loaded rail cars including all rail cars that have been released loaded at origin and have not been reported by the railway as unloaded at destination.</p> <p>Counts include all rail cars (hopper cars and boxcars) moving within a pipeline.</p>
Loads Not Moving	<p>Loaded rail cars for which the railways have not reported a movement event for 48 hours or more whether the rail car is at origin, enroute or at destination.</p>
Port Unloads	<p>Count of rail cars reported by railways as unloaded at the western port destinations of Vancouver, Prince Rupert and Thunder Bay.</p> <p>Unload counts include all rail cars (hopper cars and boxcars) unloaded by all receivers including major port terminals, transloaders and other receivers.</p>
Cars Arrived	<p>Count of rail cars reported as arrived at the destination railway terminal.</p>
Cars Received in Interchange	<p>Count of rail cars received in interchange by each railway within a destination railway terminal. Interchange activity is tracked for the Vancouver and Thunder Bay pipelines as applicable.</p>
Cars Delivered in Interchange	<p>Count of rail cars delivered in interchange by each railway within a destination railway terminal. Interchange activity is tracked for the Vancouver and Thunder Bay pipelines as applicable.</p>
Cars Placed for Unloading	<p>Count of rail cars reported by the railways as placed loaded at the receiver's facility for unloading.</p>
Loads on Wheels at Destination	<p>Count of rail cars that remain under load within the destination railway terminal including rail cars that have been reported as placed for unloading but not yet reported as unloaded.</p>
Waiting Placement for Unloading	<p>Count of rail cars that have been reported as arrived at the destination railway terminal but not reported as placed for unloading by the railway.</p> <p>For the Ports of Vancouver, Prince Rupert and Thunder Bay the count of rail cars waiting placement for unloading is categorized by age – i.e. the elapsed time from arrival at destination to the current report date.</p>