

## Loads on Wheels

- System wide loads on wheels declined for the seventh consecutive day - loads on wheels now at 9,243 - the lowest level in the prior 30 days and 15% below the trailing 30 day average
- Loads on wheels declined by a total of 362 cars reflecting declines in both CN (-240) and CP(-154) volumes.
- CN volumes declined in 4 of 5 corridors led by the Thunder Bay (-106), Vancouver (-98) and E Canada (-96) corridors offset by a slight increase in the Prince Rupert corridor (+67). System wide CN loads on wheels are now at 4,463 - the lowest level in the prior 30 days and 16% below the trailing 30 day average. Volumes are particularly low in the Vancouver corridor where CN's pipeline has fallen below 2,100 cars - 24% below the trailing 30 day average which, based on order volumes, is not a reflection of lower shipper demand in the Vancouver corridor.
- CP volumes declined principally in the Vancouver corridor (-122) - CP system wide loads on wheels are now at 4,399 - the lowest level in the prior 4 weeks and 16% below the trailing 30 day average.
- Vancouver now at 5,257 - the lowest level in the prior 30 days - Prince Rupert at 1,179 and Thunder Bay at 109. Traffic destined to E Canada (+36%) and US (+7%) destinations continue to outpace the trailing 30 day averages.

## Loads Not Moving

- The count of loaded cars not moving on CN and CP for 48 hours or more increased by 214 cars in the prior 24 hours reflecting slight increases on both CN and CP - total cars on CN and CP not moving for 48 hours now at 1,909.
- CN
  - The count of cars not moving increased by 142 cars on a net basis in the prior 24 hours reflecting nominal increases in all corridors other than Prince Rupert (-34) - loads on wheels now idle for 48 hours or more at 588.
  - Vancouver continues to account for roughly half of all idle cars.
- CP
  - CP counts increased slightly (+72 cars) on a net basis in the prior 24 hours reflecting primarily an increase in the Vancouver corridor - loads on wheels now idle for 48 hours or more now at 1,321.
  - 78% of idle cars are destined to Vancouver with 70% of those dwelling at origin locations.

## Port Performance

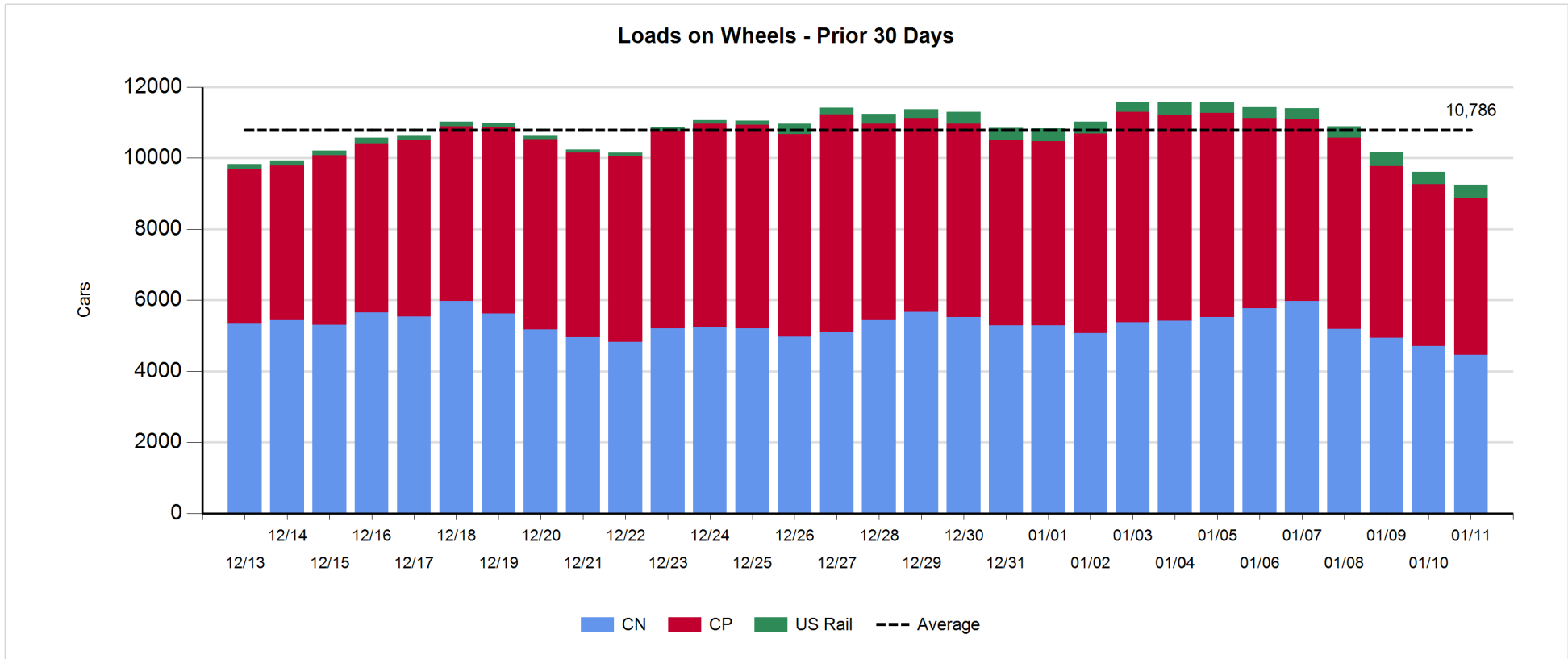
- CN and CP reported a total of 958 cars unloaded at the three western ports - through the first four days of week 24 unloads continue to outpace last week (+48%) reflecting improved week over week unloads at all three port destinations.
- Vancouver
  - Total of 664 cars reported unloaded by CN and CP at the Port of Vancouver; CN -289 and CP - 375
  - There are currently 1,012 cars on hand at Vancouver waiting placement for unloading - 176 of which arrived at Vancouver more than 72 hours ago.
- Thunder Bay
  - Total of 106 cars reported unloaded by CN and CP in the prior 24 hours.
  - Cars at Thunder Bay waiting placement now at 6.
  - With the seasonal closure of the St. Lawrence Seaway traffic volumes to Thunder Bay will continue to decline as has been the case for the past 10 days - there are currently only 109 cars in the Thunder Bay pipeline for both railways combined and less than 250 total cars ordered for Thunder Bay in the last 2 weeks.

**Daily Loads on Wheels - 1/11/2018**

	E Canada	Prince Rupert	Thunder Bay	USA/MEX	Vancouver	Total
CN	704	1,179	101	400	2,079	4,463
CP	732		8	503	3,156	4,399
Short Line	38				22	60
US Rail				321		321
	1,474	1,179	109	1,224	5,257	9,243

**Change in Loads on Wheels - Prior 24 Hours**

	E Canada	Prince Rupert	Thunder Bay	USA/MEX	Vancouver	Total
CN	-96	67	-106	-7	-98	-240
CP	2		0	-34	-122	-154
Short Line	24				-16	8
US Rail				24		24
	-70	67	-106	-17	-236	-362

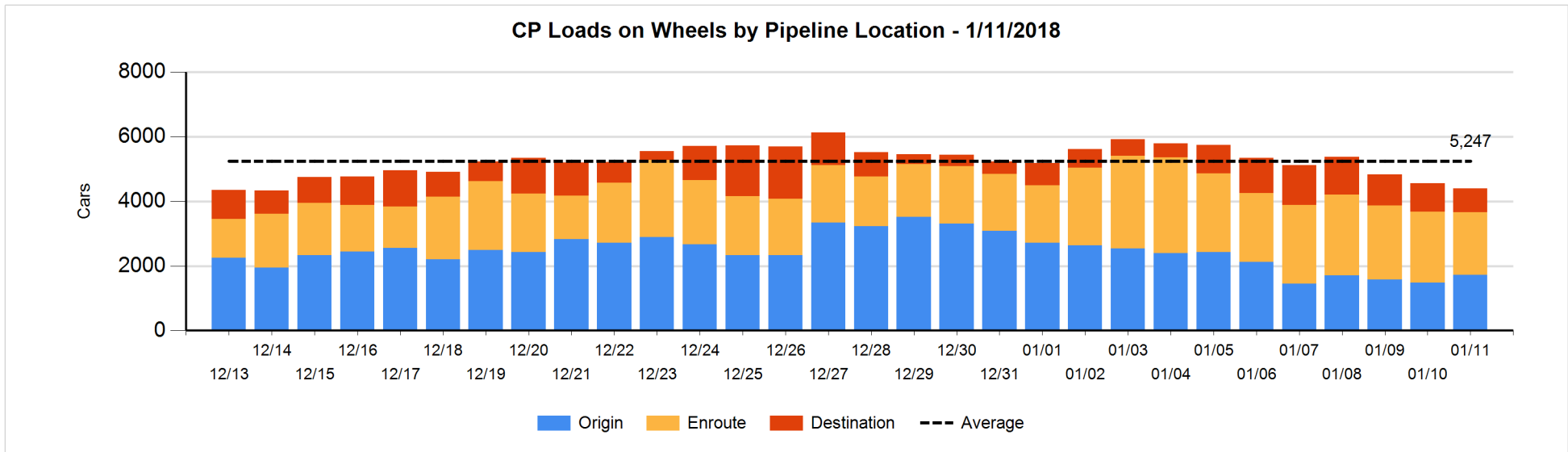
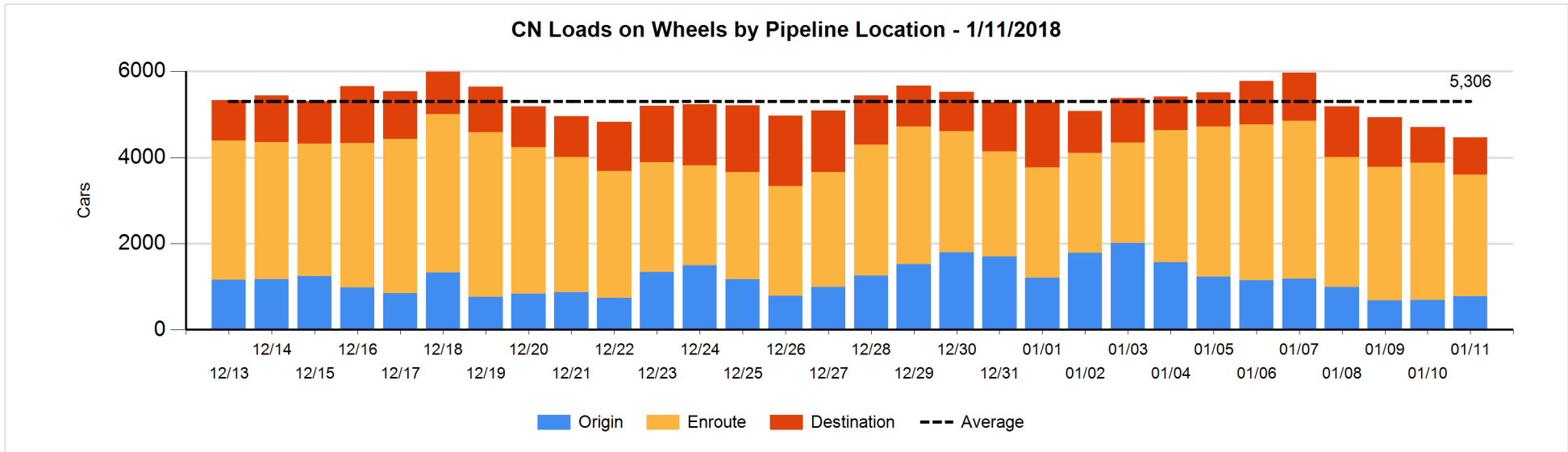


**Daily Loads on Wheels By Pipeline Location - 1/11/2018**

	E Canada	Prince Rupert	Thunder Bay	USA/MEX	Vancouver	Total
CN						
Origin	156	292		60	261	769
Enroute	508	738	32	322	1,231	2,831
Destination	40	149	69	18	587	863
	704	1,179	101	400	2,079	4,463
CP						
Origin	85			181	1,462	1,728
Enroute	637		2	253	1,045	1,937
Destination	10		6	69	649	734
	732		8	503	3,156	4,399
US Rail / Short Line						
Origin						
Enroute	30			182		212
Destination	8			139	22	169
	38			321	22	381

**Change in Daily Loads on Wheels By Pipeline Location - Prior 24 Hours**

	E Canada	Prince Rupert	Thunder Bay	USA/MEX	Vancouver	Total
CN						
Origin	31	239		-6	-187	77
Enroute	-100	-243	0	-5	-9	-357
Destination	-27	71	-106	4	98	40
	-96	67	-106	-7	-98	-240
CP						
Origin	-84			50	277	243
Enroute	77		0	-88	-245	-256
Destination	9		0	4	-154	-141
	2		0	-34	-122	-154
US Rail / Short Line						
Origin						
Enroute	24			23		47
Destination	0			1	-16	-15
	24			24	-16	32

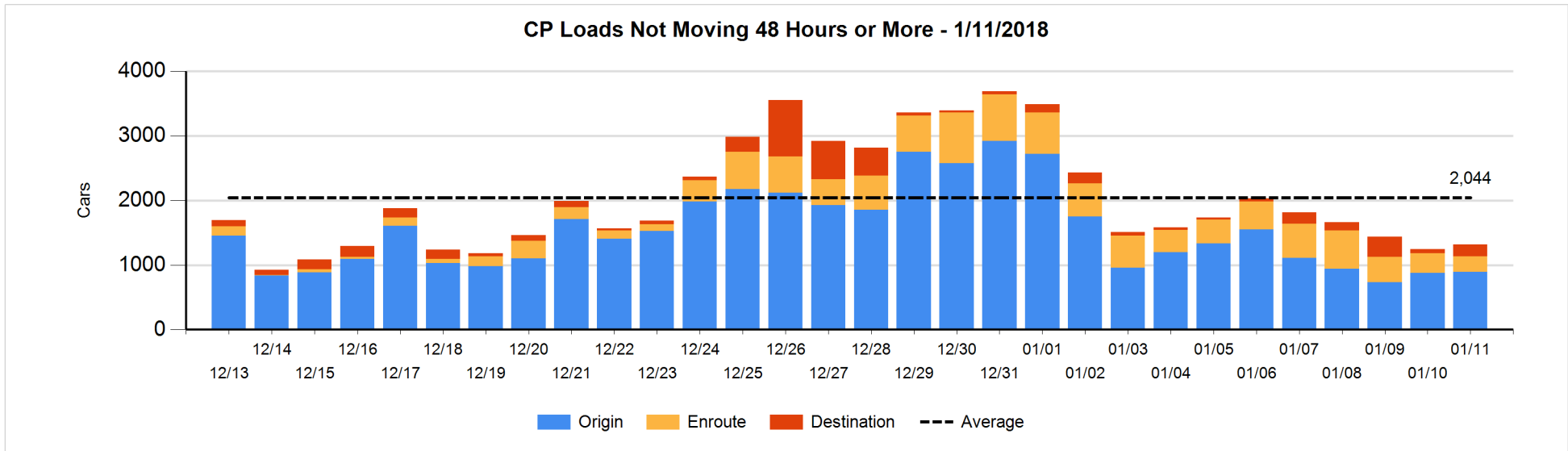
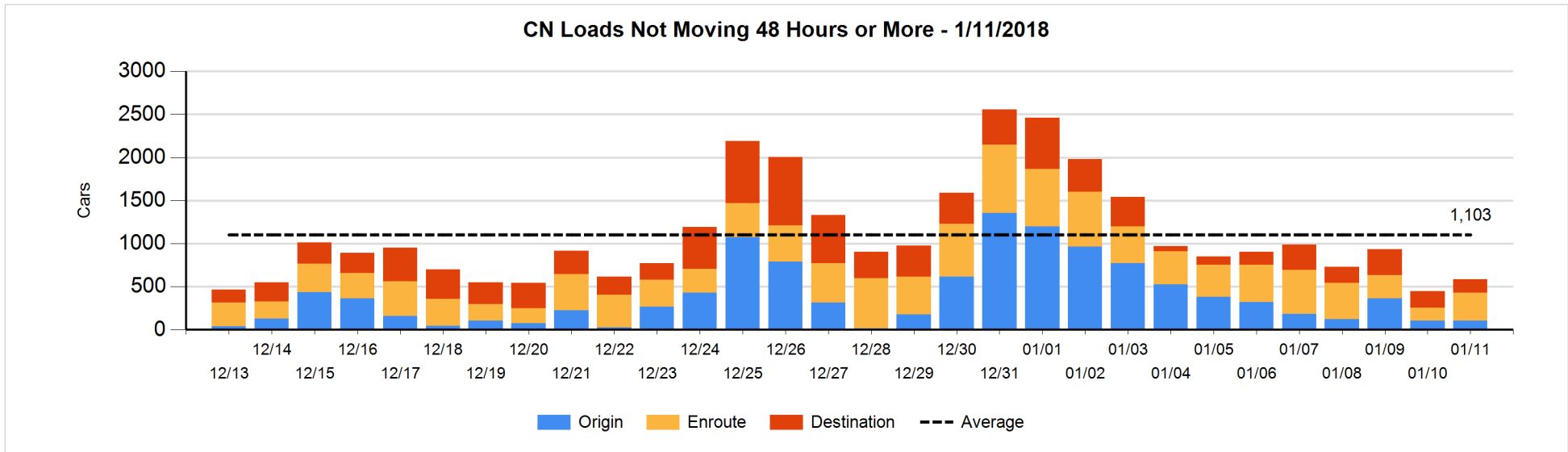


**Loads Not Moving 48 Hours or More - 1/11/2018**

	E Canada	Prince Rupert	Thunder Bay	USA/MEX	Vancouver	Total
<b>CN</b>						
Origin		37		55	14	106
Enroute	43	7	20	100	154	324
Destination	25	1	11	3	118	158
	68	45	31	158	286	588
<b>CP</b>						
Origin	29			129	737	895
Enroute	84		2	38	111	235
Destination			6	5	180	191
	113		8	172	1028	1321
<b>US Rail / Short Line</b>						
Origin						
Enroute				20		20
Destination	1			84	10	95
	1			104	10	115

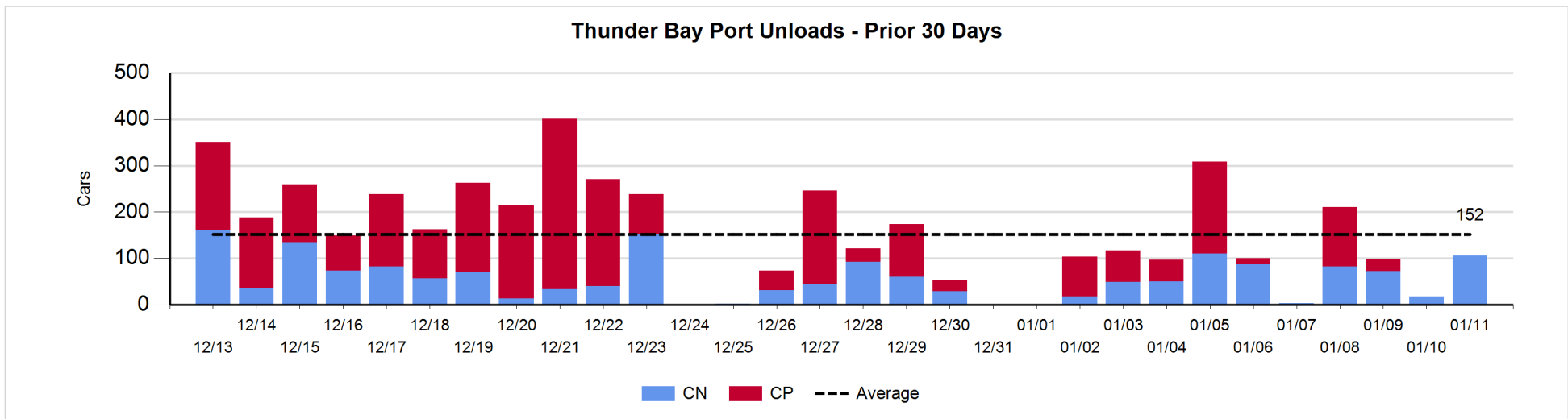
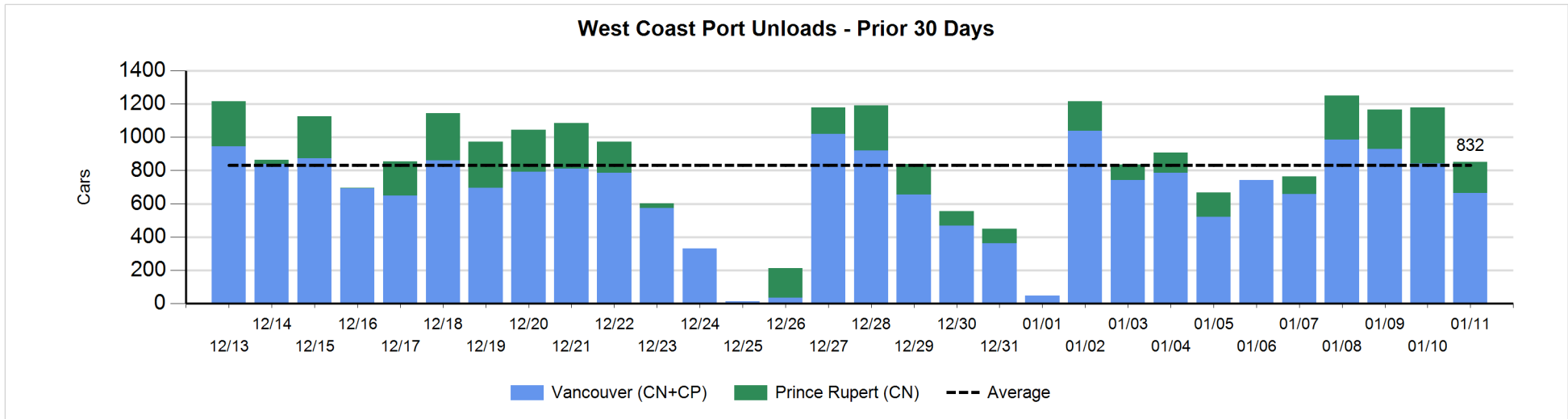
**Change in Loads Not Moving 48 Hours or More - 1/11/2018**

	E Canada	Prince Rupert	Thunder Bay	USA/MEX	Vancouver	Total
<b>CN</b>						
Origin		-10		5	9	4
Enroute	9	-25	0	95	94	173
Destination	1	1	-1	-1	-35	-35
	10	-34	-1	99	68	142
<b>CP</b>						
Origin	-82			1	97	16
Enroute	59		0	-43	-85	-69
Destination			2	-5	128	125
	-23		2	-47	140	72
<b>US Rail / Short Line</b>						
Origin						
Enroute				-5		-5
Destination	0			60	0	60
	0			55	0	55



**Port Unloads - 1/11/2018**

	Prince Rupert	Vancouver	West Coast Total	Thunder Bay	Total
CN	188	289	477	106	583
CP		375	375		375
	188	664	852	106	958



**Port Terminal Status**

**Vancouver**

Daily Activity for 1/11/2018

	Cars Arrived	Cars Received in Interchange	Cars Delivered in Interchange	Cars Placed for Unloading	Loads on Wheels at Destination As of 1/11/2018
CN	310	124	6	328	587
CP	238		124	387	649
SRY		6		23	22

**Port Unloads**

	01/11	01/10	Week To Date	Last Week
CN	289	365	1,644	2,303
CP	375	478	1,777	2,235
SRY	24	5	63	33

**Age Profile of Loaded Cars Waiting Placement for Unloading**

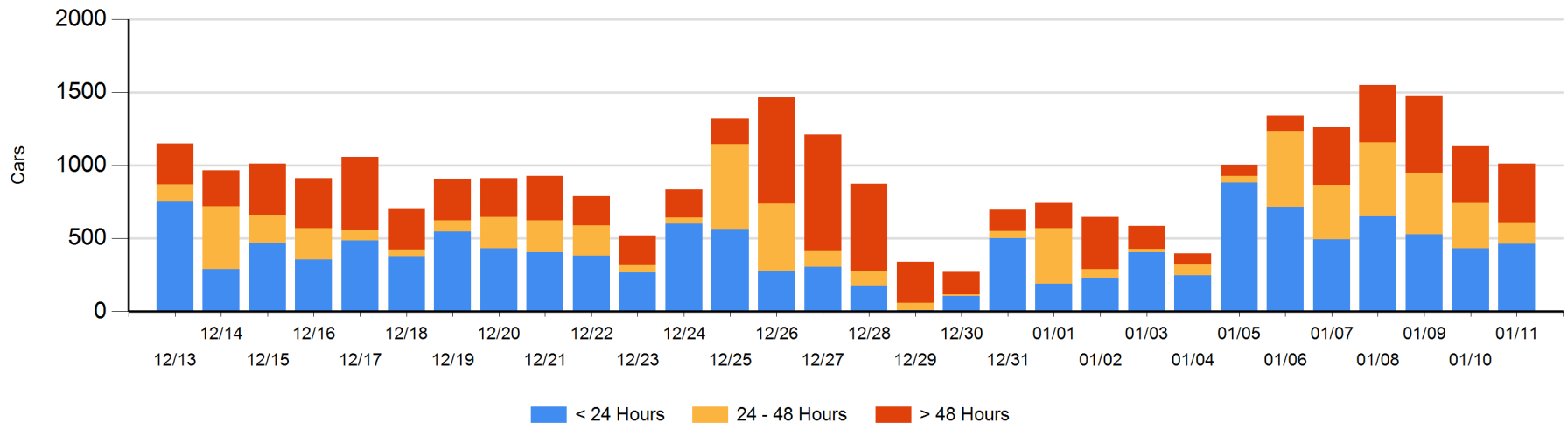
**Today**

	< 24 Hrs	24 - 48 Hrs	> 48-72 Hrs	> 72 Hrs	Total On Hand
CN	223	106	58	128	515
CP	238	38	173	48	497
SRY					0

**Change in Last 24 Hours**

	< 24 Hrs	24-48 Hrs	48 - 72 Hrs	> 72 Hrs
CN	58	48	-70	-22
CP	-28	-217	144	-34
SRY				

**Loaded Cars on Hand Vancouver Waiting for Placement - Last 30 Days All Railways**





**Port Terminal Status**

**Prince Rupert**

Daily Activity for 1/11/2018

	Cars Arrived	Cars Received in Interchange	Cars Delivered in Interchange	Cars Placed for Unloading	Loads on Wheels at Destination As of 1/11/2018
CN	259			272	149

**Port Unloads**

	01/11	01/10	Week To Date	Last Week
CN	188	335	1,024	644

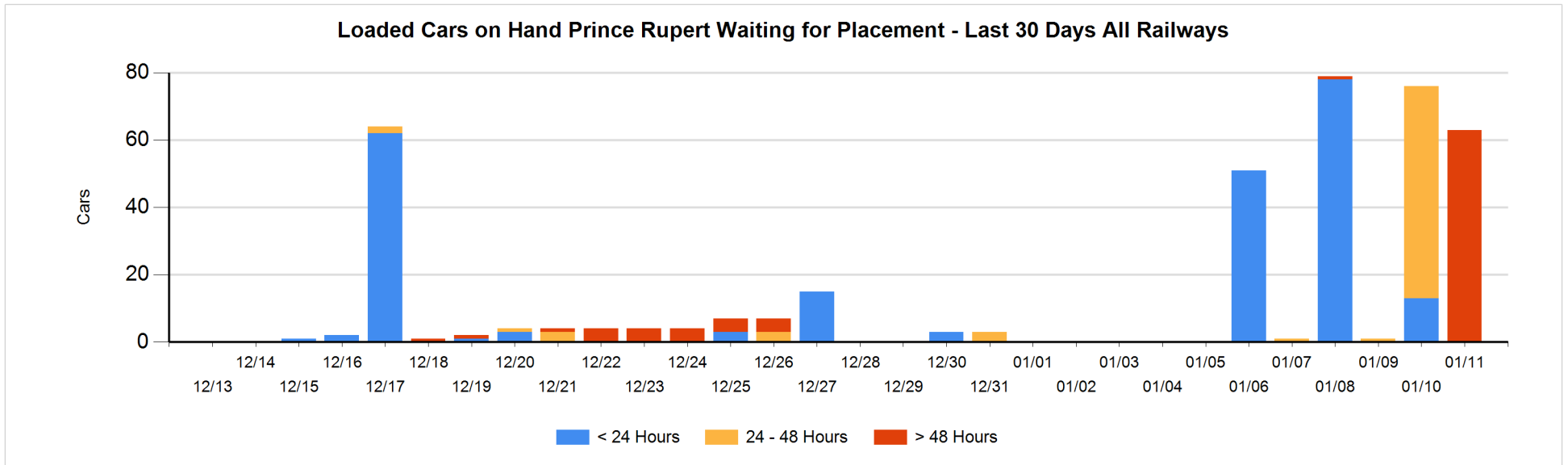
**Age Profile of Loaded Cars Waiting Placement for Unloading**

**Today**

	< 24 Hrs	24 - 48 Hrs	> 48-72 Hrs	> 72 Hrs	Total On Hand
CN			63		63

**Change in Last 24 Hours**

	< 24 Hrs	24-48 Hrs	48 - 72 Hrs	> 72 Hrs
CN	-13	-63		63



**Port Terminal Status**

**Thunder Bay**

Daily Activity for 1/11/2018

	Cars Arrived	Cars Received in Interchange	Cars Delivered in Interchange	Cars Placed for Unloading	Loads on Wheels at Destination As of 1/11/2018
CN					69
CP					6

**Port Unloads**

	01/11	01/10	Week To Date	Last Week
CN	106	18	279	317
CP			155	413

**Age Profile of Loaded Cars Waiting Placement for Unloading**

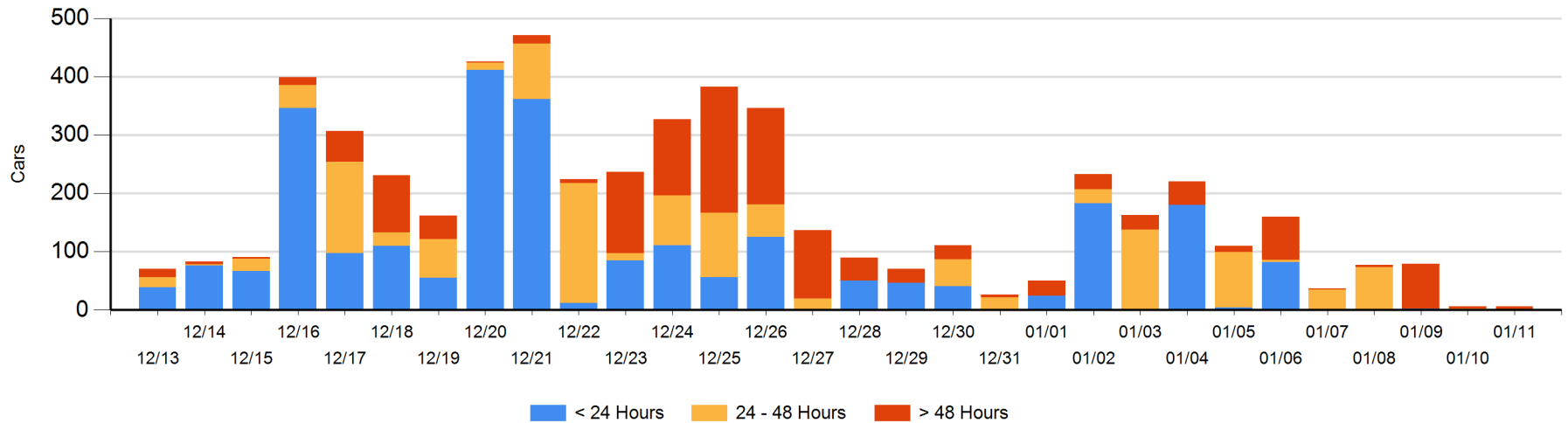
**Today**

	< 24 Hrs	24 - 48 Hrs	> 48-72 Hrs	> 72 Hrs	Total On Hand
CN					0
CP			2	4	6

**Change in Last 24 Hours**

	< 24 Hrs	24-48 Hrs	48 - 72 Hrs	> 72 Hrs
CN				
CP		-2	2	0

**Loaded Cars on Hand Thunder Bay Waiting for Placement - Last 30 Days All Railways**



## Measurement Definitions

Loads on Wheels	<p>Count of loaded rail cars including all rail cars that have been released loaded at origin and have not been reported by the railway as unloaded at destination.</p> <p>Counts include all rail cars (hopper cars and boxcars) moving within a pipeline.</p>
Loads Not Moving	<p>Loaded rail cars for which the railways have not reported a movement event for 48 hours or more whether the rail car is at origin, enroute or at destination.</p>
Port Unloads	<p>Count of rail cars reported by railways as unloaded at the western port destinations of Vancouver, Prince Rupert and Thunder Bay.</p> <p>Unload counts include all rail cars (hopper cars and boxcars) unloaded by all receivers including major port terminals, transloaders and other receivers.</p>
Cars Arrived	<p>Count of rail cars reported as arrived at the destination railway terminal.</p>
Cars Received in Interchange	<p>Count of rail cars received in interchange by each railway within a destination railway terminal. Interchange activity is tracked for the Vancouver and Thunder Bay pipelines as applicable.</p>
Cars Delivered in Interchange	<p>Count of rail cars delivered in interchange by each railway within a destination railway terminal. Interchange activity is tracked for the Vancouver and Thunder Bay pipelines as applicable.</p>
Cars Placed for Unloading	<p>Count of rail cars reported by the railways as placed loaded at the receiver's facility for unloading.</p>
Loads on Wheels at Destination	<p>Count of rail cars that remain under load within the destination railway terminal including rail cars that have been reported as placed for unloading but not yet reported as unloaded.</p>
Waiting Placement for Unloading	<p>Count of rail cars that have been reported as arrived at the destination railway terminal but not reported as placed for unloading by the railway.</p> <p>For the Ports of Vancouver, Prince Rupert and Thunder Bay the count of rail cars waiting placement for unloading is categorized by age – i.e. the elapsed time from arrival at destination to the current report date.</p>