

## Loads on Wheels

- Loads on wheels rose in the prior 24 hours - remaining above the 9,000 car threshold for the 3rd consecutive day - loads on wheels now at 9,508 - the highest level in the prior 10 days - 8% below the trailing 30 day average (5% lower net of Thunder Bay traffic)
- Loads on wheels increased by a nominal 72 cars reflecting a decline in CN (-264) volumes offset by an increase in CP (+85) volumes - increases were also seen for traffic on short lines and US railways resulting from cars interchanged from CN and CP.
- Lower CN volumes are attributable to declines in the Vancouver (-248) and E Canada (-116) corridors offset an increase in Prince Rupert traffic. System wide CN loads on wheels now at 4,811 - below the 5,000 car threshold for 10th time in the last 14 days - 6% below the trailing 30 day average (3% below net of Thunder Bay).
- CP volumes increased in the Vancouver (+244) corridor offset by declines in E Canada and US destined traffic. CP system wide loads on wheels now at 4,143 - 16% below the trailing 30 day average (14% lower net of Thunder Bay).
- Vancouver now at 5,331, Prince Rupert at 1,410 and Thunder Bay at 256.

## Hopper Car Rationing

- Preliminary indications are that CN has rationed approximately 1,000 hopper car orders for the current grain week (week 26) - principally in the Vancouver and Rupert corridors which may have a negative impact on west coast unloads in weeks 26/27

## Loads Not Moving

- The number of cars not moving for 48+ hours on CN and CP increased materially in the prior 24 hours (+915) reflecting increases on both CN and CP - idle cars on CN and CP now at 3,807 - the highest level in the prior 3 weeks having doubled in the last 4 days.
- CN
  - The count of idle cars increased by 414 cars on a net basis in the prior 24 hours reflecting primarily an increase in the Vancouver corridor - idle cars on CN now at 1,637. More than 600 of these cars have been idle for 4 days or more.
  - 60% of idle cars are destined to Vancouver with 77% of those dwelling at origin locations.
- CP
  - CP counts increased by 501 primarily attributable to an increase in Vancouver destined traffic - idle cars now at 2,170. More than 1,000 of these cars have been idle for 4 days or more.
  - Vancouver continues to account for the majority of idle cars (67%).

## Port Performance

- CN and CP reported 528 cars unloaded at the three western ports - some 500 unloads less than Sunday last week - week 25 unloads totaled 5,938, some 1,500 fewer unloads than the prior week - approximately 1,000 fewer unloads if Thunder Bay is excluded - lower unloads were recorded at both Vancouver and Prince Rupert in week 25.
- Vancouver
  - 440 cars reported unloaded by CN and CP at the Port of Vancouver; CN - 353 and CP - 87
  - There are currently 464 cars on hand at Vancouver waiting placement for unloading - 121 cars of these cars arrived at Vancouver more than 72 hours ago.
  - Beginning week 26 CN and CP have approximately 780 cars enroute to Vancouver west of Alberta
- Thunder Bay
  - No cars reported unloaded by CN and CP in the prior 24 hours - cars at Thunder Bay waiting placement now at 59 - Thunder Bay volumes expected to continue to decline due to the seasonal closure of the St. Lawrence Seaway



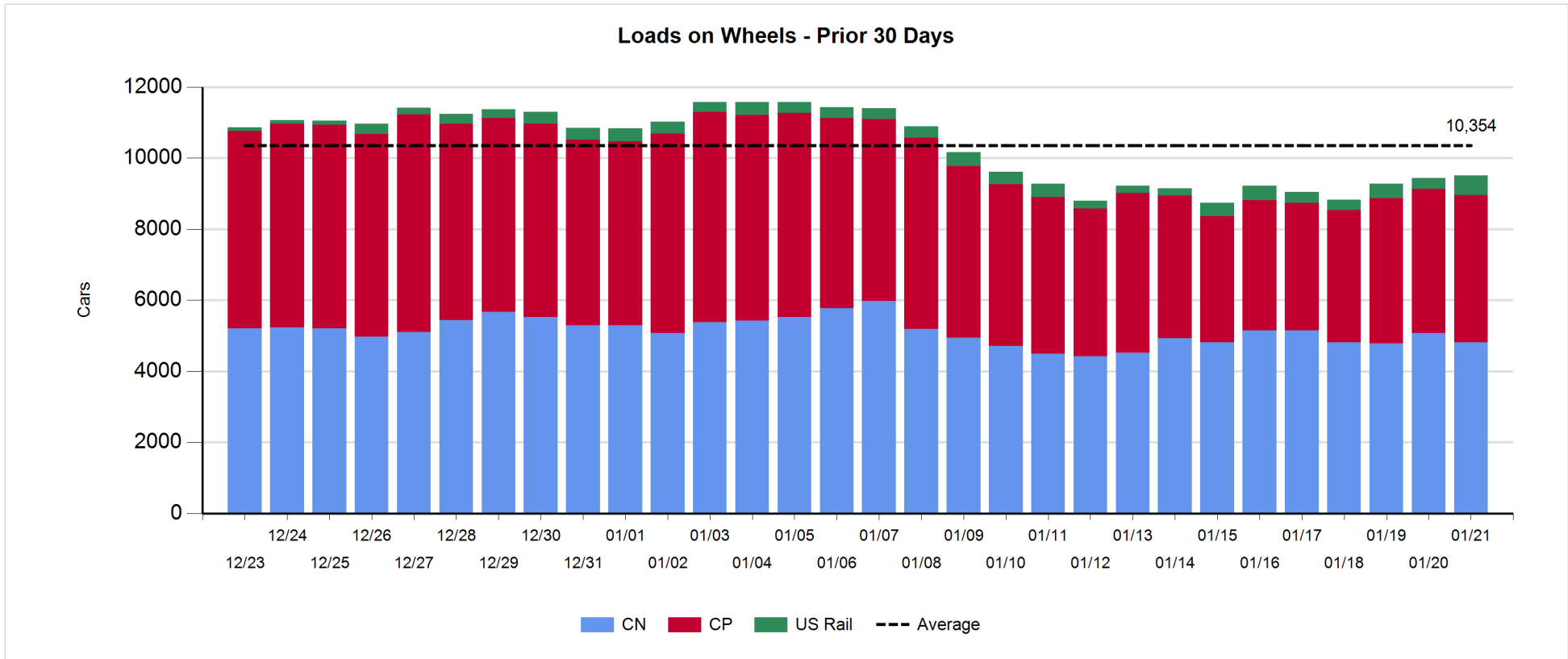
TRANSPORT  
COALITION

**Daily Loads on Wheels - 1/21/2018**

	E Canada	Prince Rupert	Thunder Bay	USA/MEX	Vancouver	Total
CN	558	1,410	132	477	2,234	4,811
CP	316		124	620	3,083	4,143
Short Line	116				14	130
US Rail				424		424
	990	1,410	256	1,521	5,331	9,508

**Change in Loads on Wheels - Prior 24 Hours**

	E Canada	Prince Rupert	Thunder Bay	USA/MEX	Vancouver	Total
CN	-116	117	0	-17	-248	-264
CP	-68		0	-91	244	85
Short Line	89				0	89
US Rail				162		162
	-95	117	0	54	-4	72

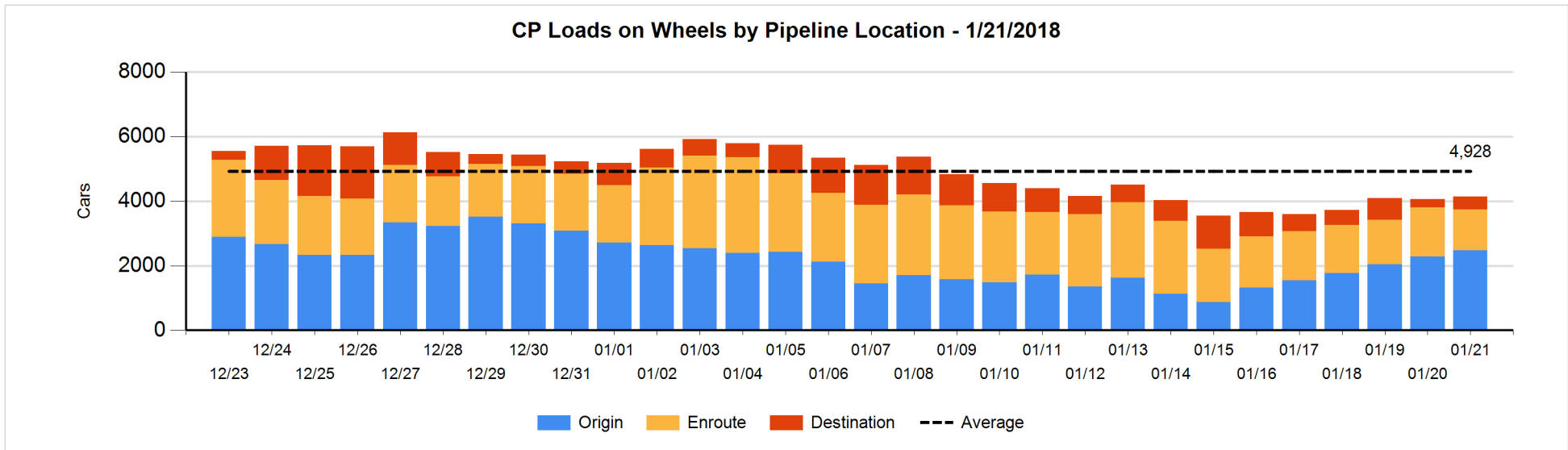
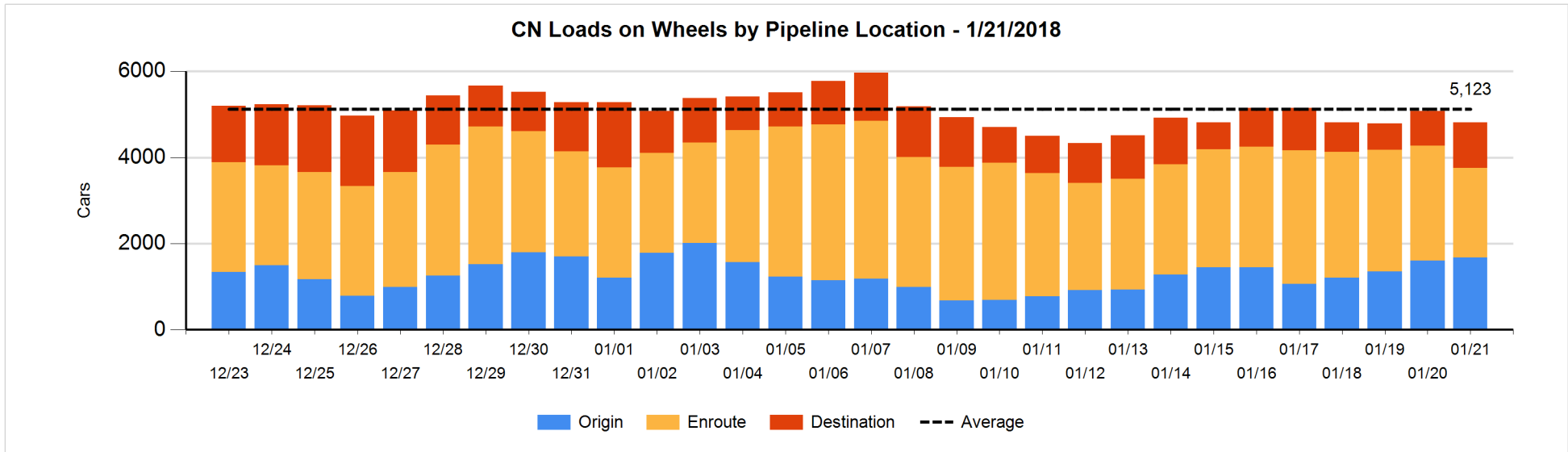


**Daily Loads on Wheels By Pipeline Location - 1/21/2018**

	E Canada	Prince Rupert	Thunder Bay	USA/MEX	Vancouver	Total
CN						
Origin	155	261		172	1,084	1,672
Enroute	310	719	38	296	723	2,086
Destination	93	430	94	9	427	1,053
	558	1,410	132	477	2,234	4,811
CP						
Origin	188		98	345	1,849	2,480
Enroute	127		24	236	872	1,259
Destination	1		2	39	362	404
	316		124	620	3,083	4,143
US Rail / Short Line						
Origin						
Enroute	86			300		386
Destination	30			124	14	168
	116			424	14	554

**Change in Daily Loads on Wheels By Pipeline Location - Prior 24 Hours**

	E Canada	Prince Rupert	Thunder Bay	USA/MEX	Vancouver	Total
CN						
Origin	-26	98		0	-4	68
Enroute	-151	-197	-94	-17	-119	-578
Destination	61	216	94	0	-125	246
	-116	117	0	-17	-248	-264
CP						
Origin	0		0	99	102	201
Enroute	-68		0	-168	-39	-275
Destination	0		0	-22	181	159
	-68		0	-91	244	85
US Rail / Short Line						
Origin						
Enroute	68			149		217
Destination	21			13	0	34
	89			162	0	251

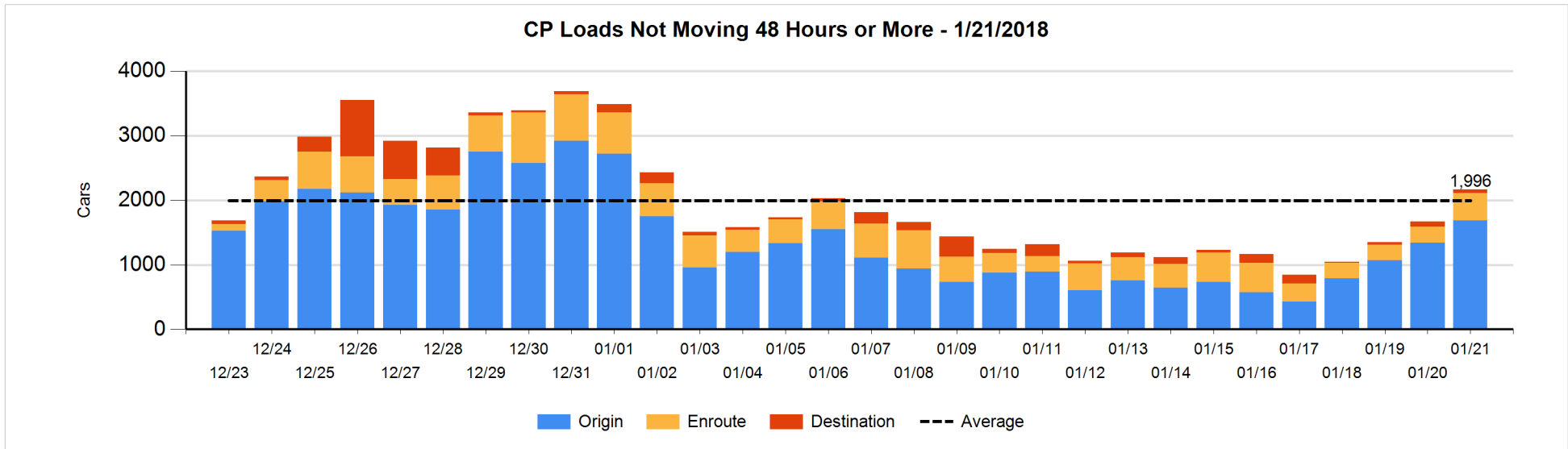
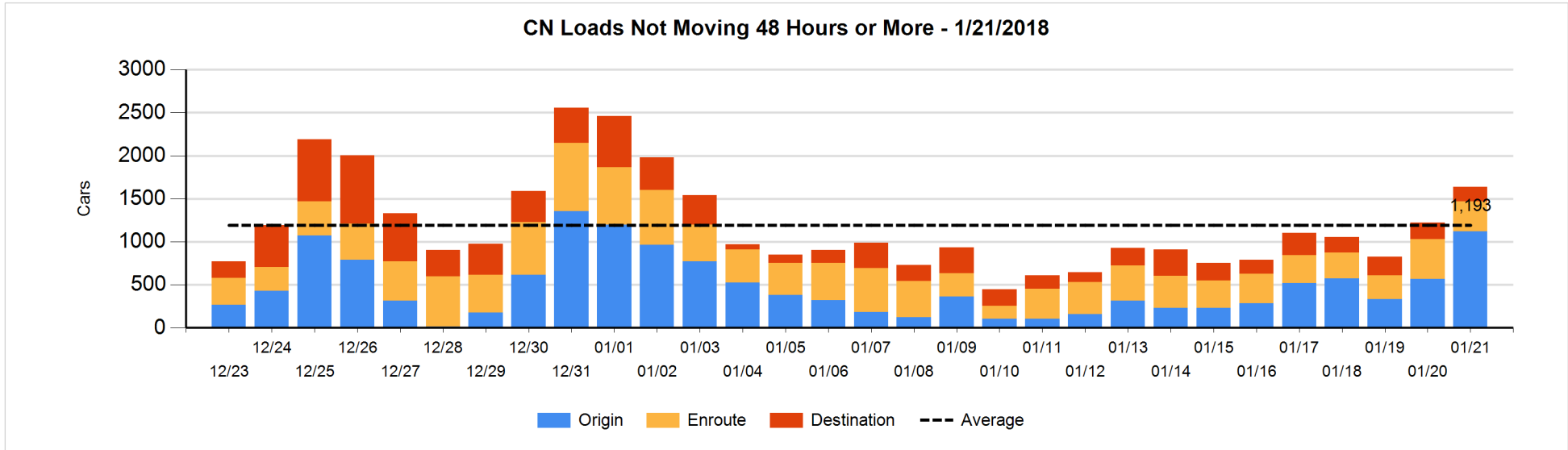


**Loads Not Moving 48 Hours or More - 1/21/2018**

	E Canada	Prince Rupert	Thunder Bay	USA/MEX	Vancouver	Total
<b>CN</b>						
Origin	154	56		172	737	1119
Enroute	26	73	25	97	130	351
Destination	4	67		5	91	167
	184	196	25	274	958	1637
<b>CP</b>						
Origin	188		46	246	1205	1685
Enroute	80			134	214	428
Destination	1		2	18	36	57
	269		48	398	1455	2170
<b>US Rail / Short Line</b>						
Origin						
Enroute	3			45		48
Destination	3			80	5	88
	6			125	5	136

**Change in Loads Not Moving 48 Hours or More - 1/21/2018**

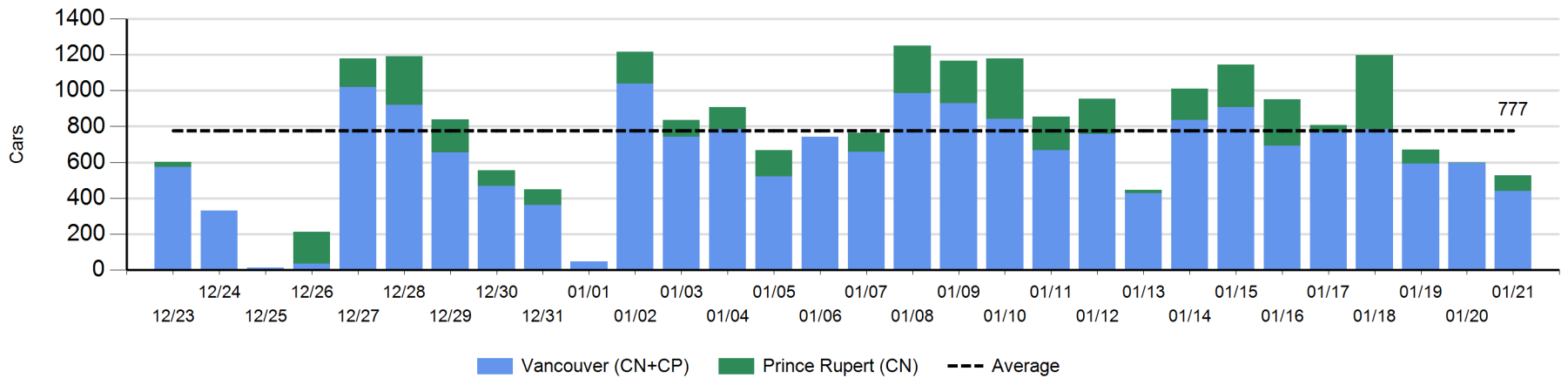
	E Canada	Prince Rupert	Thunder Bay	USA/MEX	Vancouver	Total
<b>CN</b>						
Origin	-26	46		88	443	551
Enroute	-26	3	-1	-46	-39	-109
Destination	-3	0		0	-25	-28
	-55	49	-1	42	379	414
<b>CP</b>						
Origin	114		46	2	180	342
Enroute	-38			66	152	180
Destination	0		1	-42	20	-21
	76		47	26	352	501
<b>US Rail / Short Line</b>						
Origin						
Enroute	-4			20		16
Destination	0			43	0	43
	-4			63	0	59



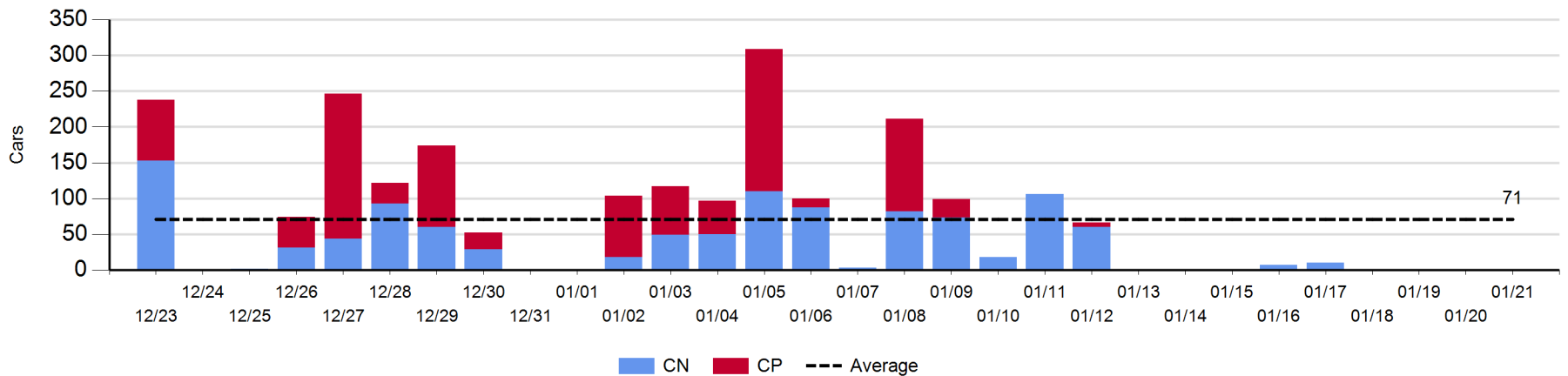
**Port Unloads - 1/21/2018**

	Prince Rupert	Vancouver	West Coast Total	Thunder Bay	Total
CN	88	353	441		441
CP		87	87		87
	88	440	528		528

**West Coast Port Unloads - Prior 30 Days**



**Thunder Bay Port Unloads - Prior 30 Days**





**Port Terminal Status**

**Vancouver**

Daily Activity for 1/21/2018

	Cars Arrived	Cars Received in Interchange	Cars Delivered in Interchange	Cars Placed for Unloading	Loads on Wheels at Destination As of 1/21/2018
CN	273	18	65	259	427
CP	221	65	18	159	362
SRY				1	14

**Port Unloads**

	01/21	01/20	Week To Date	Last Week
CN	353	257	2,202	2,711
CP	87	339	2,582	2,735
SRY			18	83

**Age Profile of Loaded Cars Waiting Placement for Unloading**

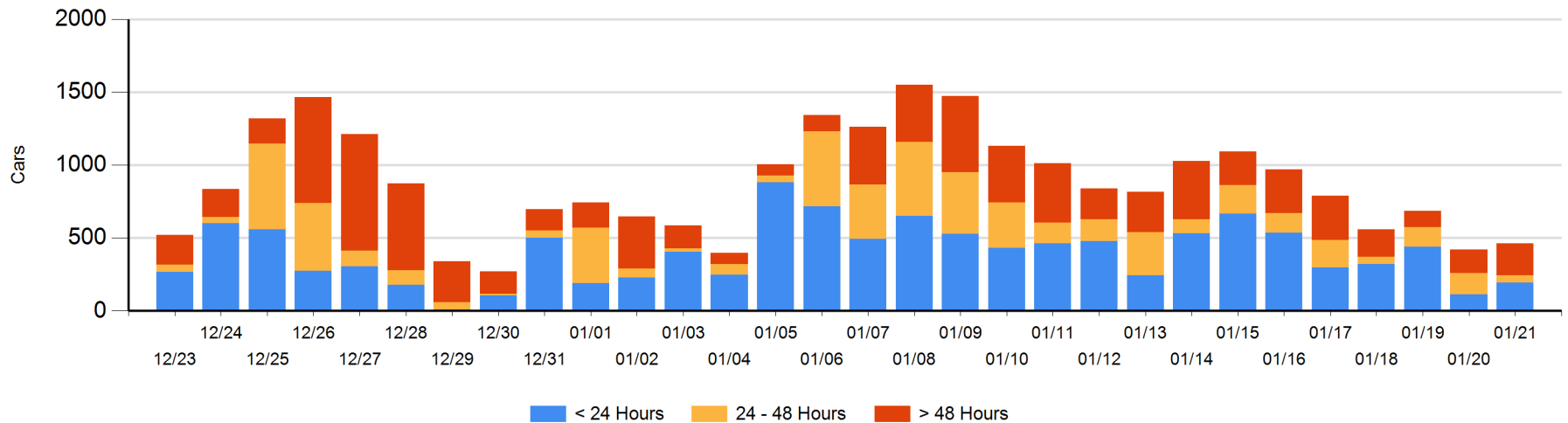
**Today**

	< 24 Hrs	24 - 48 Hrs	> 48-72 Hrs	> 72 Hrs	Total On Hand
CN	86	50	45	87	268
CP	109		53	34	196
SRY					0

**Change in Last 24 Hours**

	< 24 Hrs	24-48 Hrs	48 - 72 Hrs	> 72 Hrs
CN	-27	-15	-17	22
CP	109	-80	45	8
SRY				

**Loaded Cars on Hand Vancouver Waiting for Placement - Last 30 Days All Railways**



**Port Terminal Status**

**Prince Rupert**

Daily Activity for 1/21/2018

	Cars Arrived	Cars Received in Interchange	Cars Delivered in Interchange	Cars Placed for Unloading	Loads on Wheels at Destination As of 1/21/2018
CN	202			202	430

**Port Unloads**

	01/21	01/20	Week To Date	Last Week
CN	88	3	1,117	1,412

**Age Profile of Loaded Cars Waiting Placement for Unloading**

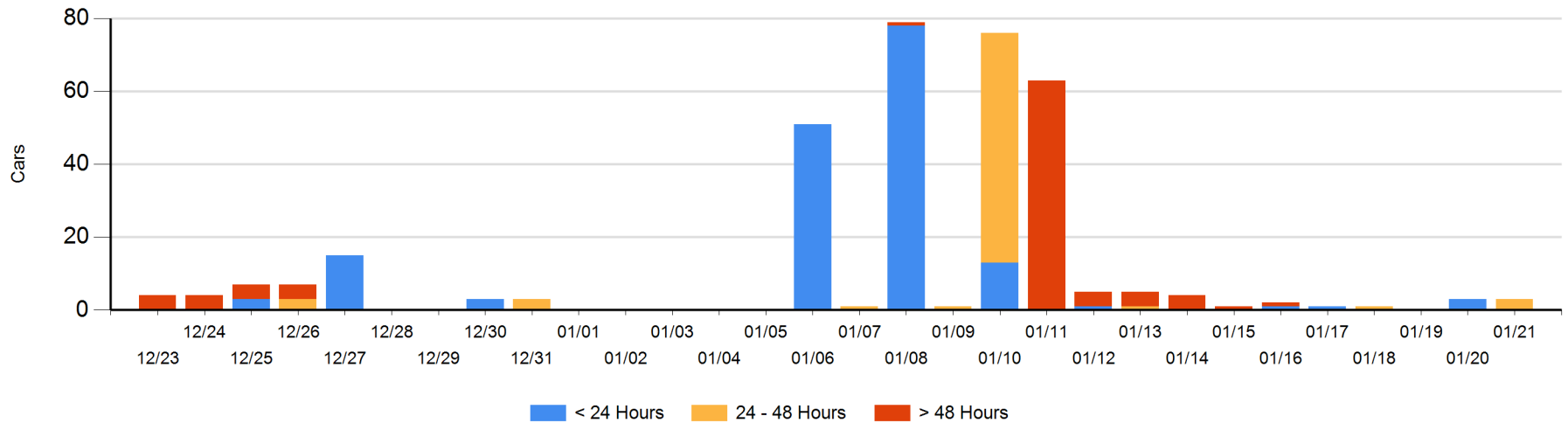
**Today**

	< 24 Hrs	24 - 48 Hrs	> 48-72 Hrs	> 72 Hrs	Total On Hand
CN		3			3

**Change in Last 24 Hours**

	< 24 Hrs	24-48 Hrs	48 - 72 Hrs	> 72 Hrs
CN	-3	3		

Loaded Cars on Hand Prince Rupert Waiting for Placement - Last 30 Days All Railways



**Port Terminal Status**

**Thunder Bay**

Daily Activity for 1/21/2018

	Cars Arrived	Cars Received in Interchange	Cars Delivered in Interchange	Cars Placed for Unloading	Loads on Wheels at Destination As of 1/21/2018
CN	94			37	94
CP					2

**Port Unloads**

	01/21	01/20	Week To Date	Last Week
CN			19	340
CP				161

**Age Profile of Loaded Cars Waiting Placement for Unloading**

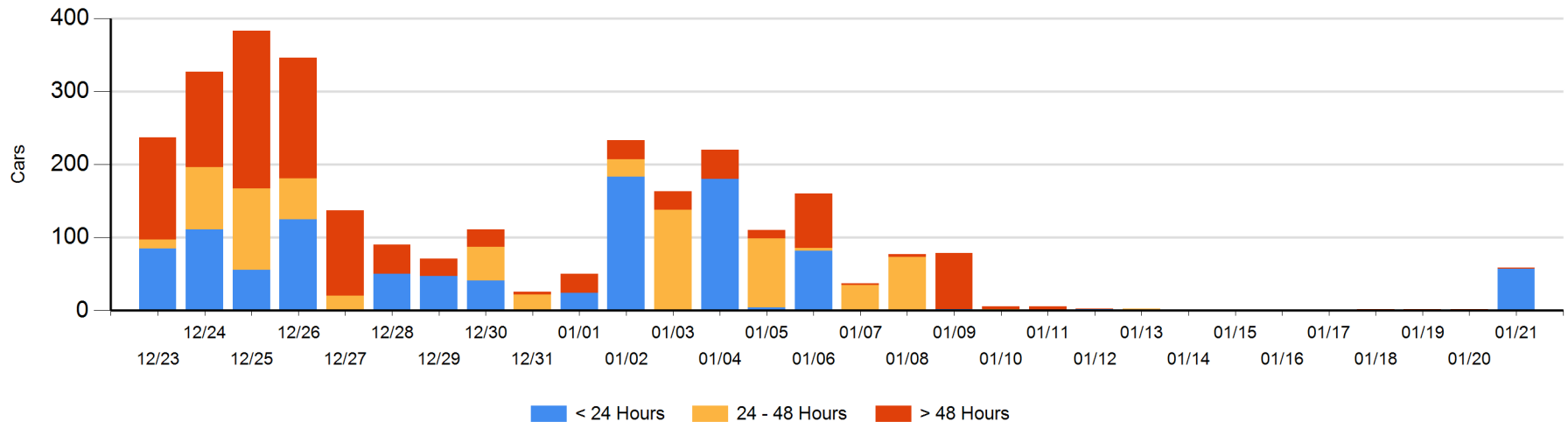
**Today**

	< 24 Hrs	24 - 48 Hrs	> 48-72 Hrs	> 72 Hrs	Total On Hand
CN	57				57
CP			1	1	2

**Change in Last 24 Hours**

	< 24 Hrs	24-48 Hrs	48 - 72 Hrs	> 72 Hrs
CN	57			
CP		-1	1	0

**Loaded Cars on Hand Thunder Bay Waiting for Placement - Last 30 Days All Railways**



## Measurement Definitions

Loads on Wheels	<p>Count of loaded rail cars including all rail cars that have been released loaded at origin and have not been reported by the railway as unloaded at destination.</p> <p>Counts include all rail cars (hopper cars and boxcars) moving within a pipeline.</p>
Loads Not Moving	<p>Loaded rail cars for which the railways have not reported a movement event for 48 hours or more whether the rail car is at origin, enroute or at destination.</p>
Port Unloads	<p>Count of rail cars reported by railways as unloaded at the western port destinations of Vancouver, Prince Rupert and Thunder Bay.</p> <p>Unload counts include all rail cars (hopper cars and boxcars) unloaded by all receivers including major port terminals, transloaders and other receivers.</p>
Cars Arrived	<p>Count of rail cars reported as arrived at the destination railway terminal.</p>
Cars Received in Interchange	<p>Count of rail cars received in interchange by each railway within a destination railway terminal. Interchange activity is tracked for the Vancouver and Thunder Bay pipelines as applicable.</p>
Cars Delivered in Interchange	<p>Count of rail cars delivered in interchange by each railway within a destination railway terminal. Interchange activity is tracked for the Vancouver and Thunder Bay pipelines as applicable.</p>
Cars Placed for Unloading	<p>Count of rail cars reported by the railways as placed loaded at the receiver's facility for unloading.</p>
Loads on Wheels at Destination	<p>Count of rail cars that remain under load within the destination railway terminal including rail cars that have been reported as placed for unloading but not yet reported as unloaded.</p>
Waiting Placement for Unloading	<p>Count of rail cars that have been reported as arrived at the destination railway terminal but not reported as placed for unloading by the railway.</p> <p>For the Ports of Vancouver, Prince Rupert and Thunder Bay the count of rail cars waiting placement for unloading is categorized by age – i.e. the elapsed time from arrival at destination to the current report date.</p>