

## Loads on Wheels

- Loads on wheels increased during the prior 24 hours - remains above the 9,000 car threshold - loads on wheels now at 9,479 - 5% below the trailing 30 day average (2% below net of Thunder Bay traffic)
- Loads on wheels increased by 184 cars on a net basis reflecting an increase in CN (+475) volumes offset by lower CP (-242) volumes and reduced volumes moving on US railways.
- Higher CN volumes reflect increases in the Vancouver (+383) and Prince Rupert (+103) corridors. System wide CN loads on wheels now at 5,029 - 1% above the trailing 30 day average (5% higher net of Thunder Bay).
- CP volumes decreased principally in the Vancouver corridor (-239). CP system wide loads on wheels now at 4,052 - the lowest level in the prior 10 days and 12% below the trailing 30 day average (11% lower net of Thunder Bay).
- Vancouver now at 5,701, Prince Rupert at 1,107 and Thunder Bay at 109.

## Hopper Car Rationing

- Preliminary indications are that CN has rationed north of 500 hopper car orders during week 27 on the heels of an estimated 1,000 rationed orders last week.

## Loads Not Moving

- The number of cars not moving for 48+ hours on CN and CP declined by 444 cars in the prior 24 hours reflecting higher counts on CN offset by lower counts on CP - idle cars on CN and CP now at 2,866.
- CN
  - The count of idle cars increased by 135 on a net basis in the prior 24 hours reflecting increases in the E Canada and Prince Rupert corridors - idle cars on CN now at 1,456 - more than 1,000 of these cars have been idle for 4 days or more - a 25% jump in the prior 24 hours. Nearly 500 cars have not moved in 7 days or more principally in the Vancouver and Prince Rupert corridors
  - Idle cars are distributed across a number of corridors led by Vancouver (611) and Prince Rupert (433) - the majority of Prince Rupert destined cars are dwelling at origin locations.
- CP
  - CP counts declined by 579 cars reflecting a drop in the Vancouver corridor (-517) - idle cars now at 1,410. Nearly 750 of these cars have been idle for 4 days or more a 50% decline in the last 24 hours - nearly 500 have not moved for 7 days or more.
  - Vancouver continues to account for the majority of idle cars (66%) with 84% of all idle cars dwelling at origin locations - the majority of cars not moving for 7+ days are destined to Vancouver.

## Port Performance

- CN and CP reported 901 cars unloaded at the three western ports - some 250 unloads less than Monday last week reflecting lower unloads at both Vancouver and Prince Rupert.
- Vancouver
  - 676 cars reported unloaded by CN and CP at the Port of Vancouver; CN - 315 and CP - 361
  - There are currently only 366 cars on hand at Vancouver waiting placement for unloading; CN and CP have approximately 1,100 cars enroute to Vancouver west of Alberta with **70% of cars currently moving on CN.**
- Prince Rupert
  - With few cars on hand at Prince Rupert and less than 200 cars west of Prince George there may be challenges with respect to unloads in the coming days



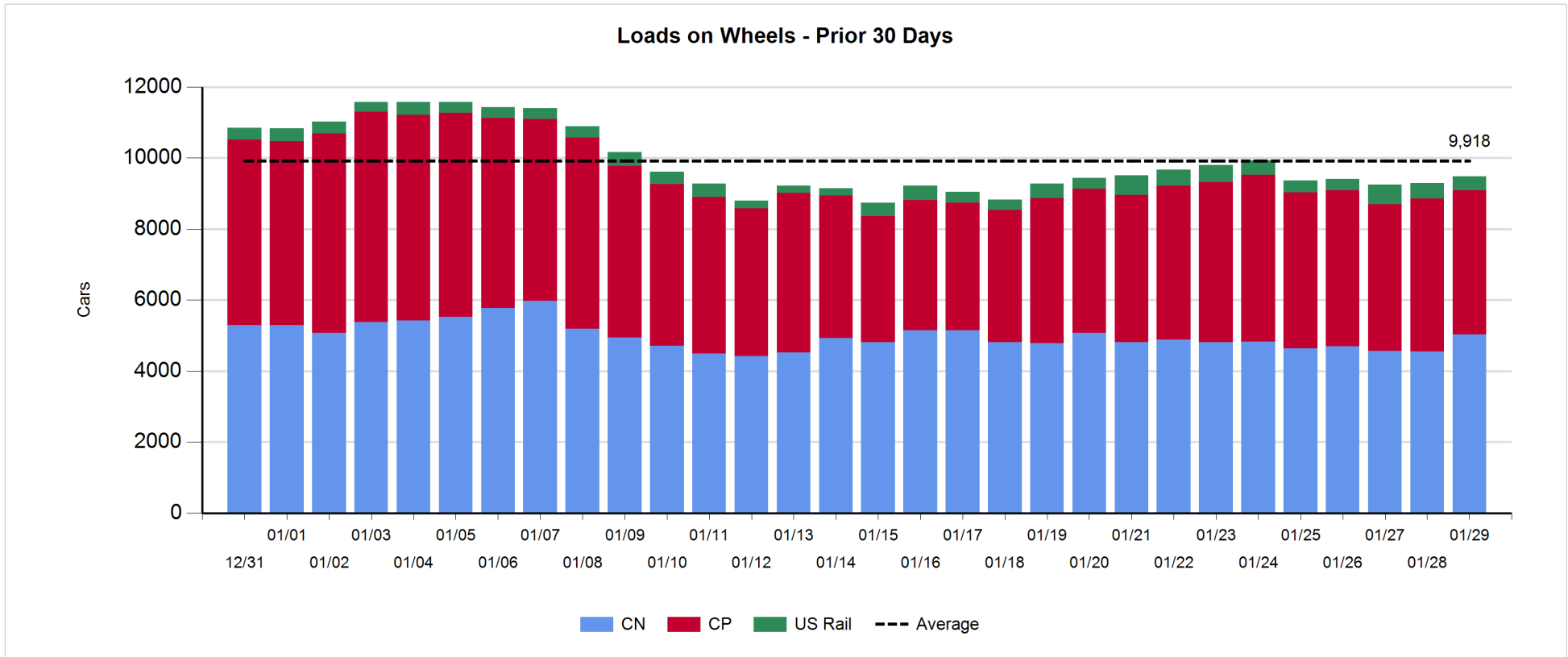
- Thunder Bay
  - 41 cars reported unloaded by CN and CP in the prior 24 hours - cars at Thunder Bay waiting placement now at 62 - Thunder Bay volumes expected to continue to decline due to the seasonal closure of the St. Lawrence Seaway

**Daily Loads on Wheels - 1/29/2018**

	E Canada	Prince Rupert	Thunder Bay	USA/MEX	Vancouver	Total
CN	726	1,107	26	398	2,772	5,029
CP	642		83	445	2,882	4,052
Short Line	93				47	140
US Rail				258		258
	1,461	1,107	109	1,101	5,701	9,479

**Change in Loads on Wheels - Prior 24 Hours**

	E Canada	Prince Rupert	Thunder Bay	USA/MEX	Vancouver	Total
CN	9	103	0	-20	383	475
CP	48		-41	-10	-239	-242
Short Line	47				6	53
US Rail				-102		-102
	104	103	-41	-132	150	184

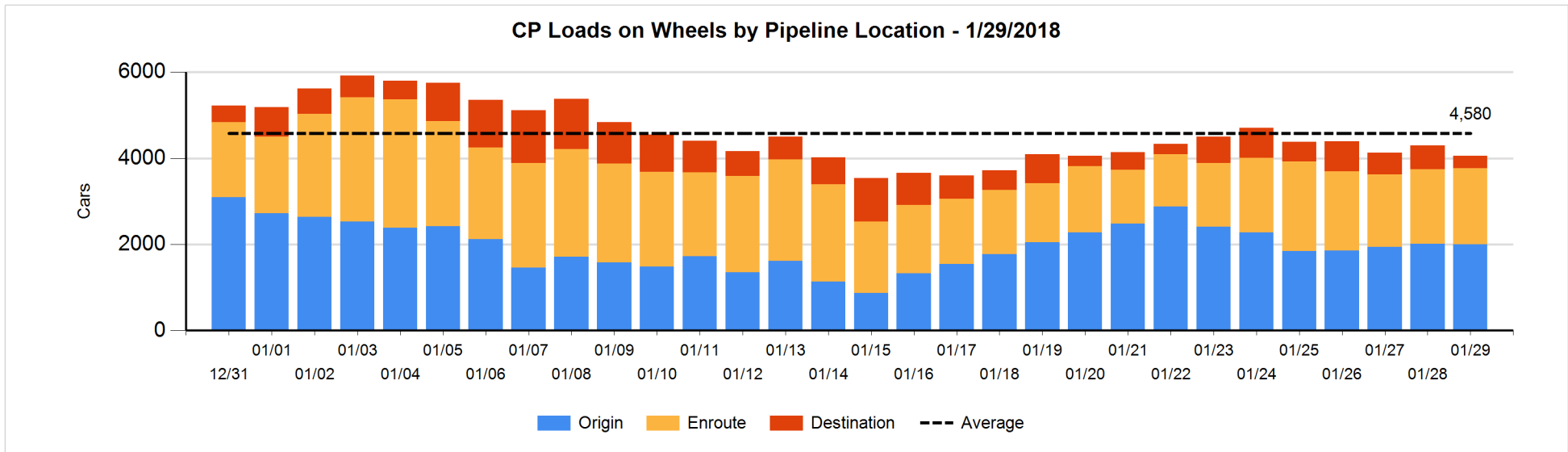
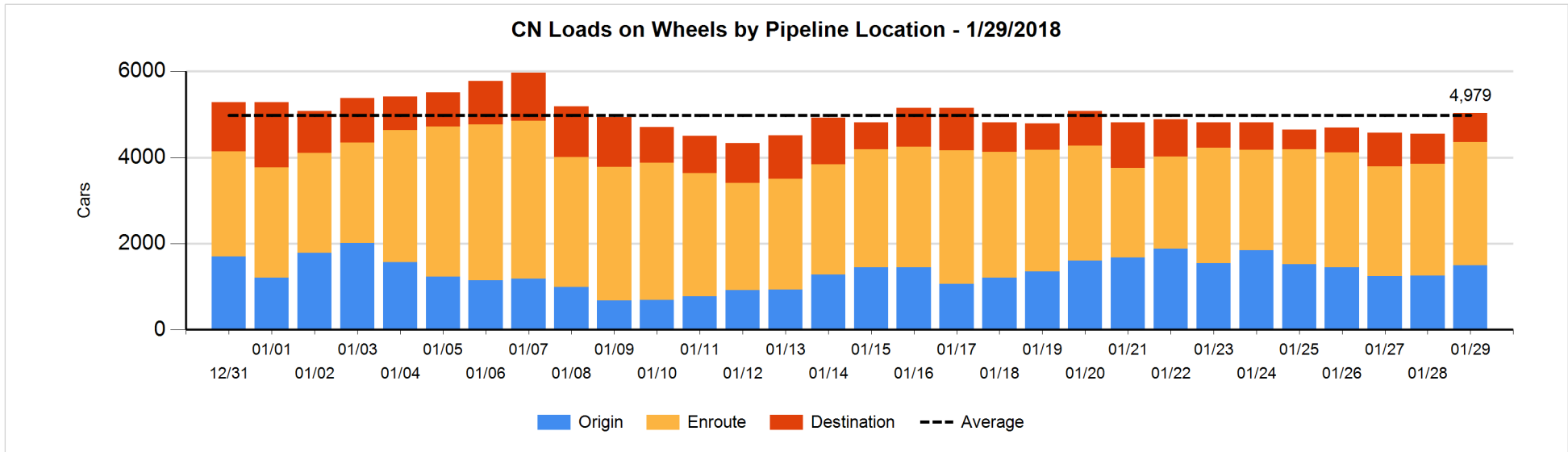


**Daily Loads on Wheels By Pipeline Location - 1/29/2018**

	E Canada	Prince Rupert	Thunder Bay	USA/MEX	Vancouver	Total
CN						
Origin	205	655		35	595	1,490
Enroute	403	448	25	354	1,634	2,864
Destination	118	4	1	9	543	675
	726	1,107	26	398	2,772	5,029
CP						
Origin	482			72	1,442	1,996
Enroute	160			337	1,271	1,768
Destination			83	36	169	288
	642		83	445	2,882	4,052
US Rail / Short Line						
Origin						
Enroute	45			116		161
Destination	48			142	47	237
	93			258	47	398

**Change in Daily Loads on Wheels By Pipeline Location - Prior 24 Hours**

	E Canada	Prince Rupert	Thunder Bay	USA/MEX	Vancouver	Total
CN						
Origin	103	281		-64	-84	236
Enroute	-94	-82	0	59	385	268
Destination	0	-96	0	-15	82	-29
	9	103	0	-20	383	475
CP						
Origin	111			61	-192	-20
Enroute	-63			-75	179	41
Destination			-41	4	-226	-263
	48		-41	-10	-239	-242
US Rail / Short Line						
Origin						
Enroute	13			-12		1
Destination	34			-90	6	-50
	47			-102	6	-49

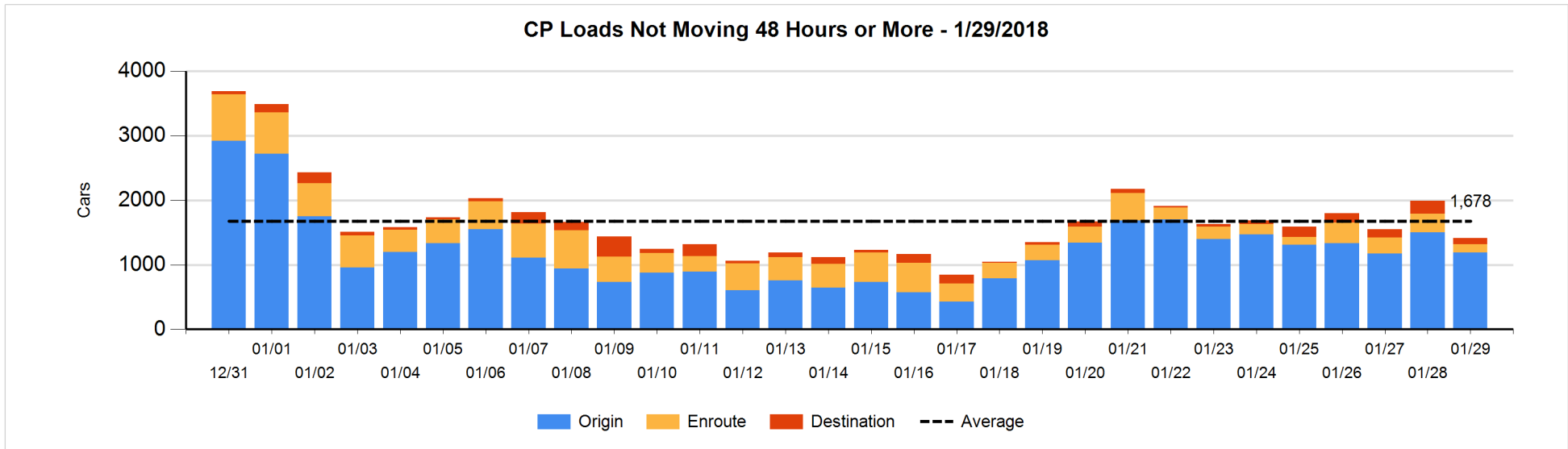
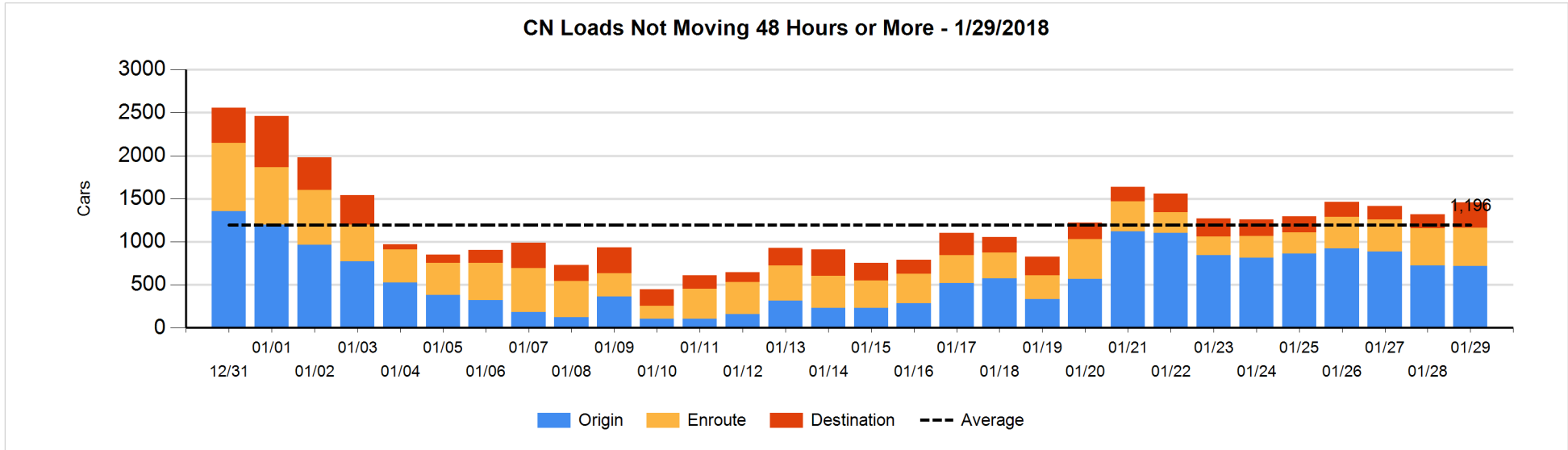


**Loads Not Moving 48 Hours or More - 1/29/2018**

	E Canada	Prince Rupert	Thunder Bay	USA/MEX	Vancouver	Total
CN						
Origin	101	368		10	237	716
Enroute	128	62	25	92	138	445
Destination	47	3	1	8	236	295
	276	433	26	110	611	1456
CP						
Origin	263			9	914	1186
Enroute	89			30	16	135
Destination			80	4	5	89
	352		80	43	935	1410
US Rail / Short Line						
Origin						
Enroute	5			27		32
Destination	7			88	20	115
	12			115	20	147

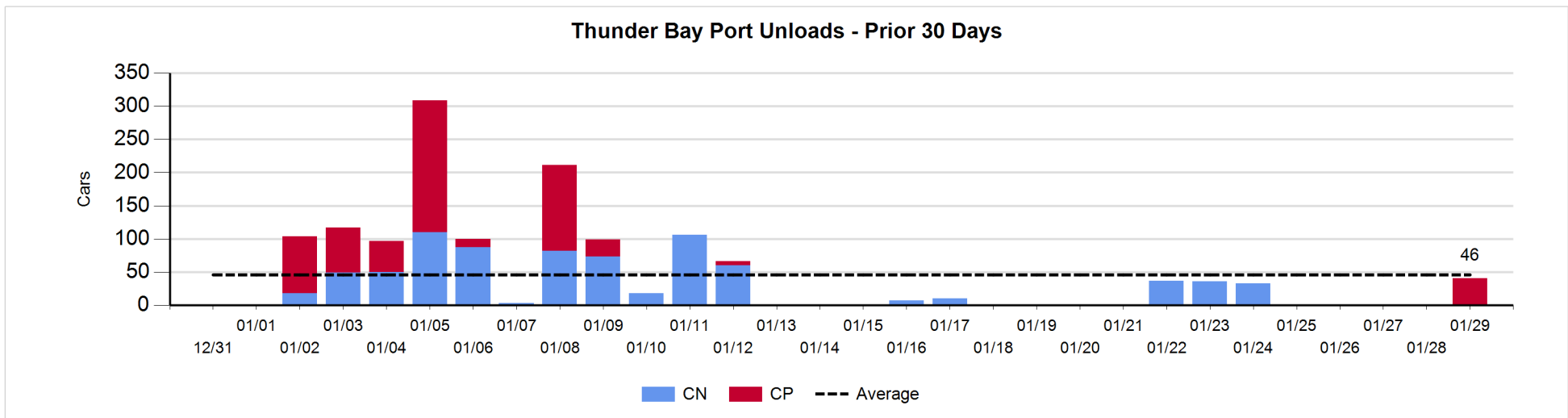
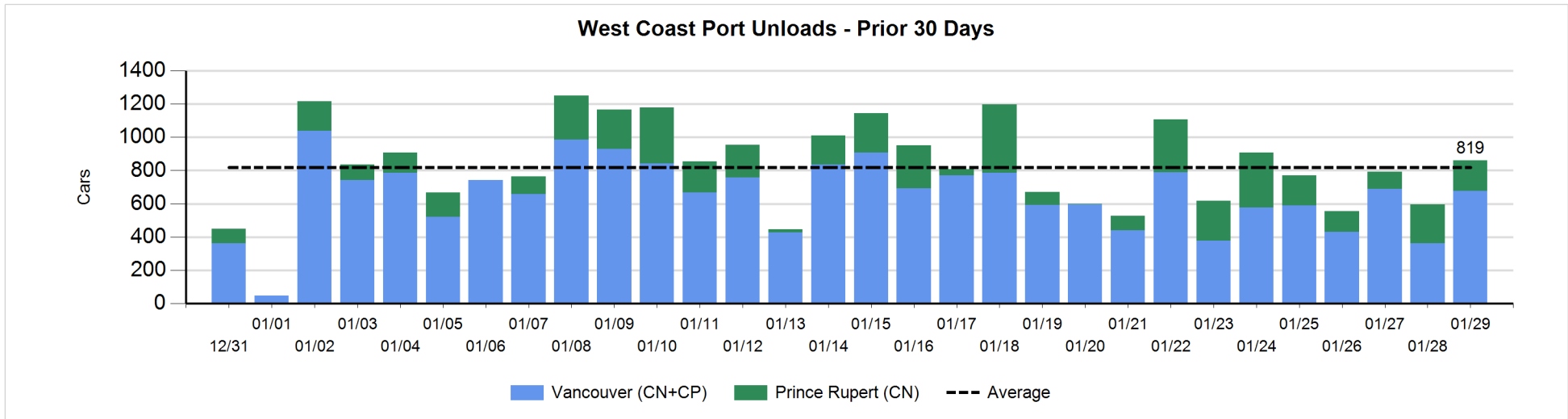
**Change in Loads Not Moving 48 Hours or More - 1/29/2018**

	E Canada	Prince Rupert	Thunder Bay	USA/MEX	Vancouver	Total
CN						
Origin	0	101		-37	-74	-10
Enroute	50	5	0	-4	-39	12
Destination	45	-3	1	-6	96	133
	95	103	1	-47	-17	135
CP						
Origin	78			-1	-390	-313
Enroute	-8			-132	-19	-159
Destination			4	-3	-108	-107
	70		4	-136	-517	-579
US Rail / Short Line						
Origin						
Enroute	-26			-16		-42
Destination	0			17	-1	16
	-26			1	-1	-26



**Port Unloads - 1/29/2018**

	Prince Rupert	Vancouver	West Coast Total	Thunder Bay	Total
CN	184	315	499		499
CP		361	361	41	402
	184	676	860	41	901





**Port Terminal Status**

**Vancouver**

Daily Activity for 1/29/2018

	Cars Arrived	Cars Received in Interchange	Cars Delivered in Interchange	Cars Placed for Unloading	Loads on Wheels at Destination As of 1/29/2018
CN	112	383		301	543
CP	422		384	415	169
SRY	1	1		3	47

**Port Unloads**

	01/29	01/28	Week To Date	Last Week
CN	315	184	315	1,427
CP	361	177	361	2,389
SRY	5	4	5	56

**Age Profile of Loaded Cars Waiting Placement for Unloading**

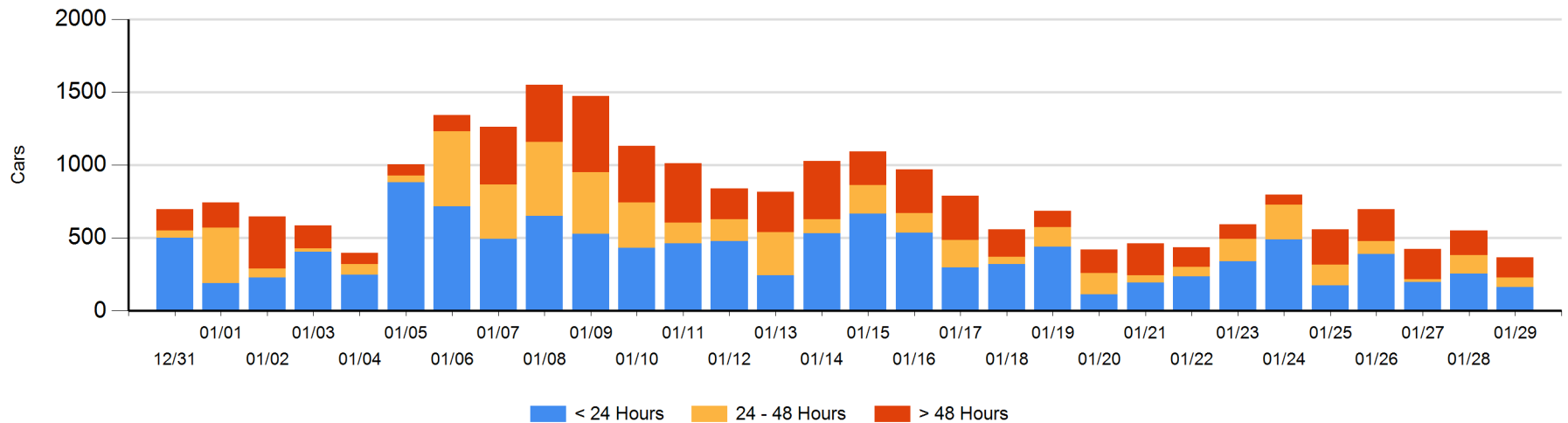
**Today**

	< 24 Hrs	24 - 48 Hrs	> 48-72 Hrs	> 72 Hrs	Total On Hand
CN	24	41	53	34	152
CP	140	23	35	16	214
SRY					0

**Change in Last 24 Hours**

	< 24 Hrs	24-48 Hrs	48 - 72 Hrs	> 72 Hrs
CN	-17	-12	53	-2
CP	-75	-52	24	-104
SRY				

**Loaded Cars on Hand Vancouver Waiting for Placement - Last 30 Days All Railways**



**Port Terminal Status**

**Prince Rupert**

Daily Activity for 1/29/2018

	Cars Arrived	Cars Received in Interchange	Cars Delivered in Interchange	Cars Placed for Unloading	Loads on Wheels at Destination As of 1/29/2018
CN	88			88	4

**Port Unloads**

	01/29	01/28	Week To Date	Last Week
CN	184	235	184	1,530

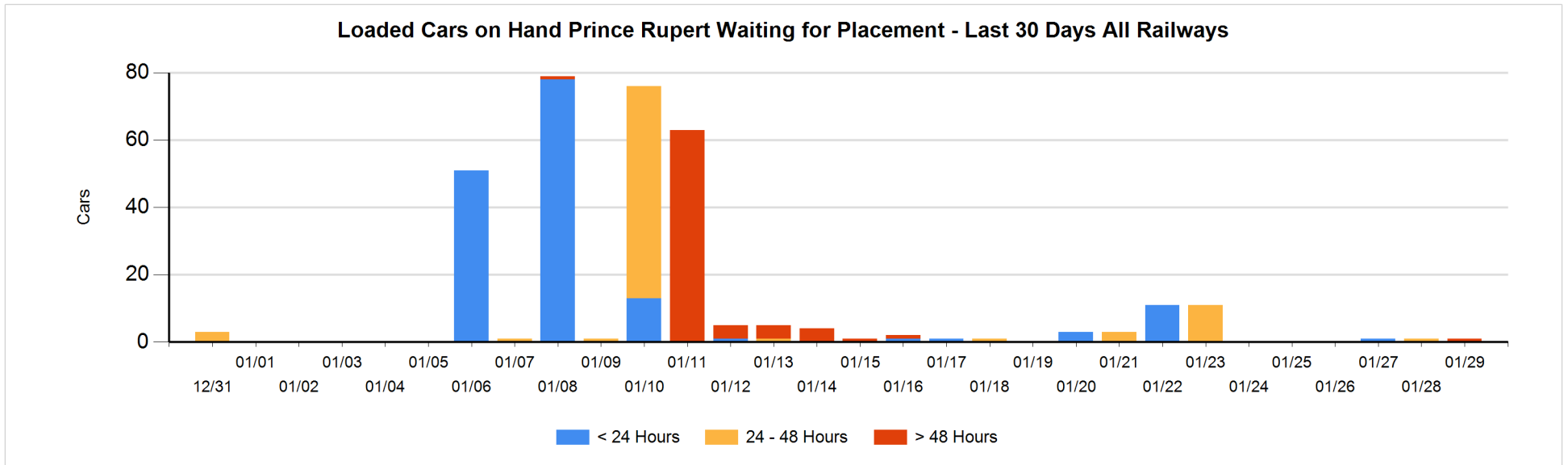
**Age Profile of Loaded Cars Waiting Placement for Unloading**

**Today**

	< 24 Hrs	24 - 48 Hrs	> 48-72 Hrs	> 72 Hrs	Total On Hand
CN			1		1

**Change in Last 24 Hours**

	< 24 Hrs	24-48 Hrs	48 - 72 Hrs	> 72 Hrs
CN		-1		1



**Port Terminal Status**

**Thunder Bay**

Daily Activity for 1/29/2018

	Cars Arrived	Cars Received in Interchange	Cars Delivered in Interchange	Cars Placed for Unloading	Loads on Wheels at Destination As of 1/29/2018
CN					1
CP					83

**Port Unloads**

	01/29	01/28	Week To Date	Last Week
CN				106
CP	41		41	

**Age Profile of Loaded Cars Waiting Placement for Unloading**

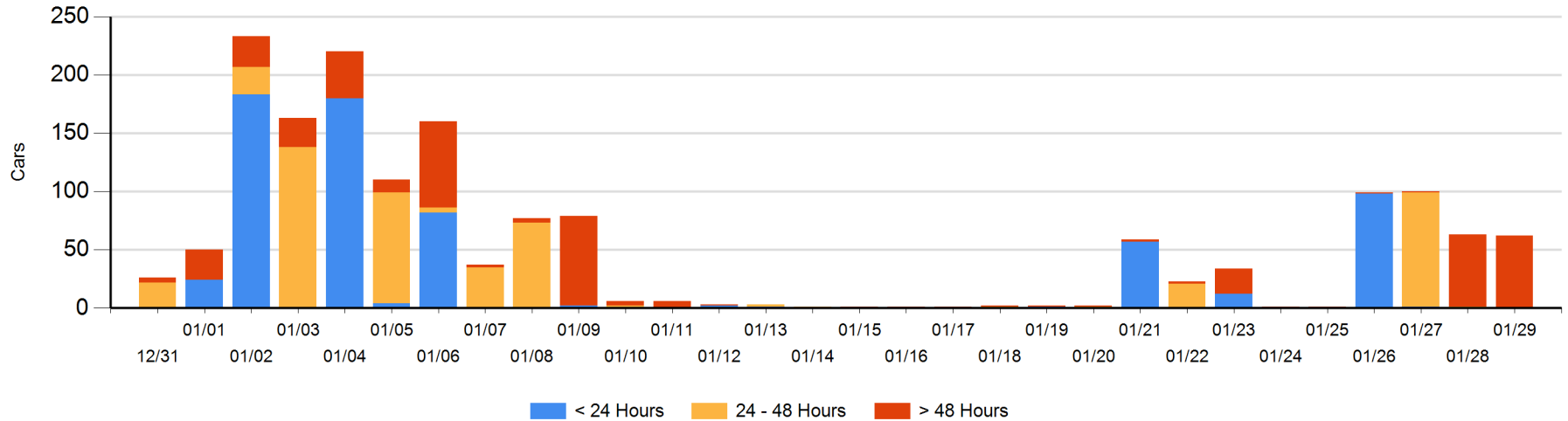
**Today**

	< 24 Hrs	24 - 48 Hrs	> 48-72 Hrs	> 72 Hrs	Total On Hand
CN			1		1
CP				61	61

**Change in Last 24 Hours**

	< 24 Hrs	24-48 Hrs	48 - 72 Hrs	> 72 Hrs
CN		-1	1	
CP			-61	60

**Loaded Cars on Hand Thunder Bay Waiting for Placement - Last 30 Days All Railways**



## Measurement Definitions

Loads on Wheels	<p>Count of loaded rail cars including all rail cars that have been released loaded at origin and have not been reported by the railway as unloaded at destination.</p> <p>Counts include all rail cars (hopper cars and boxcars) moving within a pipeline.</p>
Loads Not Moving	<p>Loaded rail cars for which the railways have not reported a movement event for 48 hours or more whether the rail car is at origin, enroute or at destination.</p>
Port Unloads	<p>Count of rail cars reported by railways as unloaded at the western port destinations of Vancouver, Prince Rupert and Thunder Bay.</p> <p>Unload counts include all rail cars (hopper cars and boxcars) unloaded by all receivers including major port terminals, transloaders and other receivers.</p>
Cars Arrived	<p>Count of rail cars reported as arrived at the destination railway terminal.</p>
Cars Received in Interchange	<p>Count of rail cars received in interchange by each railway within a destination railway terminal. Interchange activity is tracked for the Vancouver and Thunder Bay pipelines as applicable.</p>
Cars Delivered in Interchange	<p>Count of rail cars delivered in interchange by each railway within a destination railway terminal. Interchange activity is tracked for the Vancouver and Thunder Bay pipelines as applicable.</p>
Cars Placed for Unloading	<p>Count of rail cars reported by the railways as placed loaded at the receiver's facility for unloading.</p>
Loads on Wheels at Destination	<p>Count of rail cars that remain under load within the destination railway terminal including rail cars that have been reported as placed for unloading but not yet reported as unloaded.</p>
Waiting Placement for Unloading	<p>Count of rail cars that have been reported as arrived at the destination railway terminal but not reported as placed for unloading by the railway.</p> <p>For the Ports of Vancouver, Prince Rupert and Thunder Bay the count of rail cars waiting placement for unloading is categorized by age – i.e. the elapsed time from arrival at destination to the current report date.</p>