

## Loads on Wheels

- Loads on wheels increased for only the second time in the prior 12 days, once again rising above the 9,000 car threshold - loads on wheels now at 9,218 - 13% below the trailing 30 day average (7% below the 30 day average if Thunder Bay traffic is excluded)
- Loads on wheels increased by a total of 482 cars reflecting an increase in both CN (+337) and CP (+122) volumes.
- CN volumes increased primarily in the Vancouver (+126) and Prince Rupert (+175) corridors. System wide CN loads on wheels are now at 5,148 - above the 5,000 car threshold for the first time in 8 days - in line with the trailing 30 day average (4% above excluding Thunder Bay).
- CP volumes increased in the Vancouver corridor (+178) offset by declines in the E Canada corridor (-113). CP system wide loads on wheels are now at 3,663 - 30% below the trailing 30 day average (23% lower excluding Thunder Bay).
- Vancouver now at 5,200, Prince Rupert at 1,562 - above the 1,500 car threshold for only the fourth time in the prior 30 days - and Thunder Bay at 133. Traffic destined to E Canada has declined and is now in line with the trailing 30 day average.

## Loads Not Moving

- There was little change in the prior 24 hours in the count of loaded cars not moving on CN and CP for 48 hours or more (-28) reflecting a nominal increase on CN offset by a slight decrease on CP - total cars on CN and CP not moving for 48 hours now at 1,956.
- CN
  - The count of cars not moving increased slightly by 32 cars on a net basis in the prior 24 hours reflecting a decrease in Vancouver traffic (-102) offset by increases in the Prince Rupert and E Canada corridors - loads on wheels now idle for 48 hours or more at 788.
  - Idle cars are distributed across all corridors with Vancouver destined shipments accounting for slightly less than 30% of all idle cars.
- CP
  - CP counts decreased by 60 cars on a net basis in the prior 24 hours reflecting nominal changes across all corridors - loads on wheels now idle for 48 hours or more now at 1,168.
  - 62% of idle cars are destined to Vancouver with 65% of those dwelling at origin locations.

## Port Performance

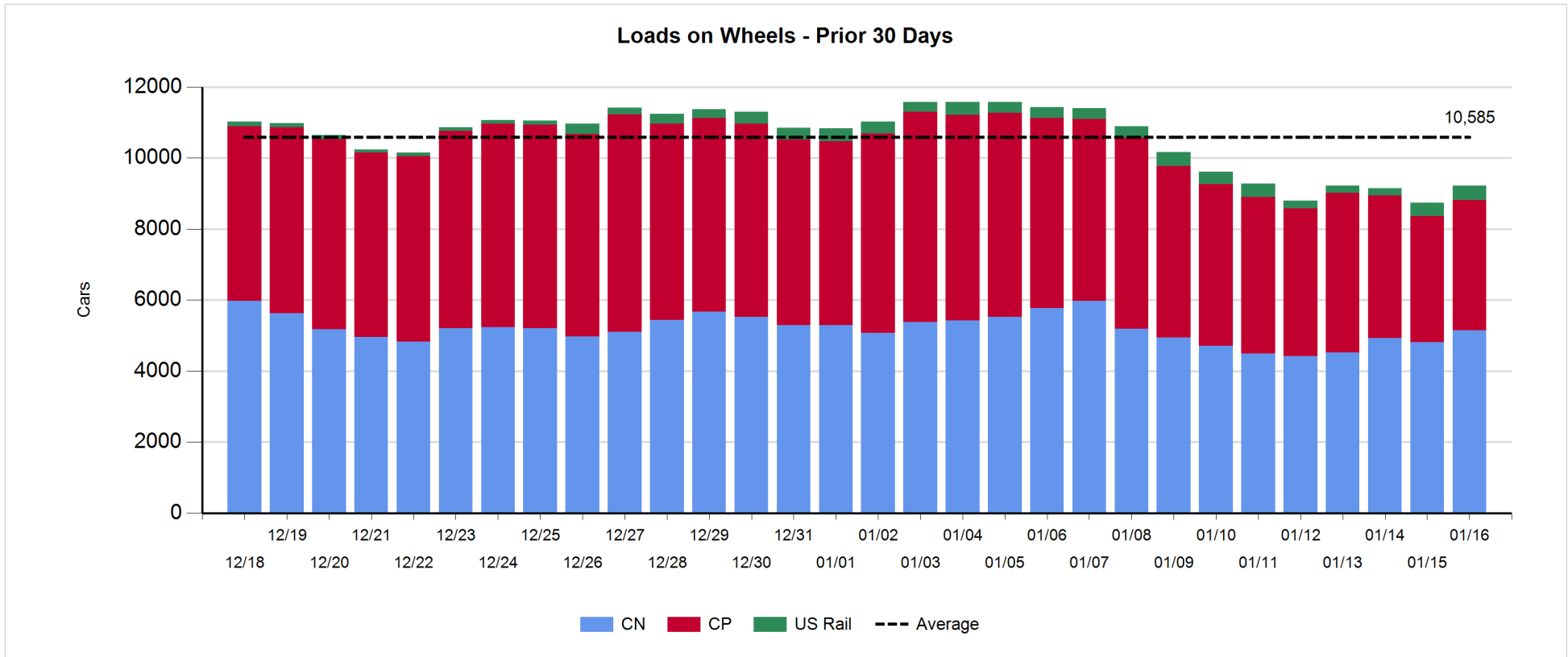
- CN and CP reported a total of 957 cars unloaded at the three western ports - some 300 unloads lower than Tuesday last week although 100 of the decline is attributable to lower Thunder Bay unloads - net of Thunder Bay week 25 unloads through the first 2 days are tracking 340 unloads behind last week's pace attributable to lower unloads at Vancouver.
- Vancouver
  - Total of 691 cars reported unloaded by CN and CP at the Port of Vancouver; CN - 237 and CP - 454
  - There are currently 972 cars on hand at Vancouver waiting placement for unloading - 133 cars awaiting placement arrived at Vancouver more than 72 hours ago.
- Thunder Bay
  - Total of 7 cars reported unloaded by CN and CP in the prior 24 hours.
  - Cars at Thunder Bay waiting placement now at 1.
  - With the seasonal closure of the St. Lawrence Seaway traffic volumes to Thunder Bay will continue to decline - there are currently only 133 cars in the Thunder Bay pipeline for both railways combined with no orders placed for Thunder Bay for week 25.

**Daily Loads on Wheels - 1/16/2018**

	E Canada	Prince Rupert	Thunder Bay	USA/MEX	Vancouver	Total
CN	590	1,562	131	357	2,508	5,148
CP	464		2	515	2,682	3,663
Short Line	174				10	184
US Rail				223		223
	1,228	1,562	133	1,095	5,200	9,218

**Change in Loads on Wheels - Prior 24 Hours**

	E Canada	Prince Rupert	Thunder Bay	USA/MEX	Vancouver	Total
CN	77	175	-7	-34	126	337
CP	-113		0	57	178	122
Short Line	-5				-4	-9
US Rail				32		32
	-41	175	-7	55	300	482

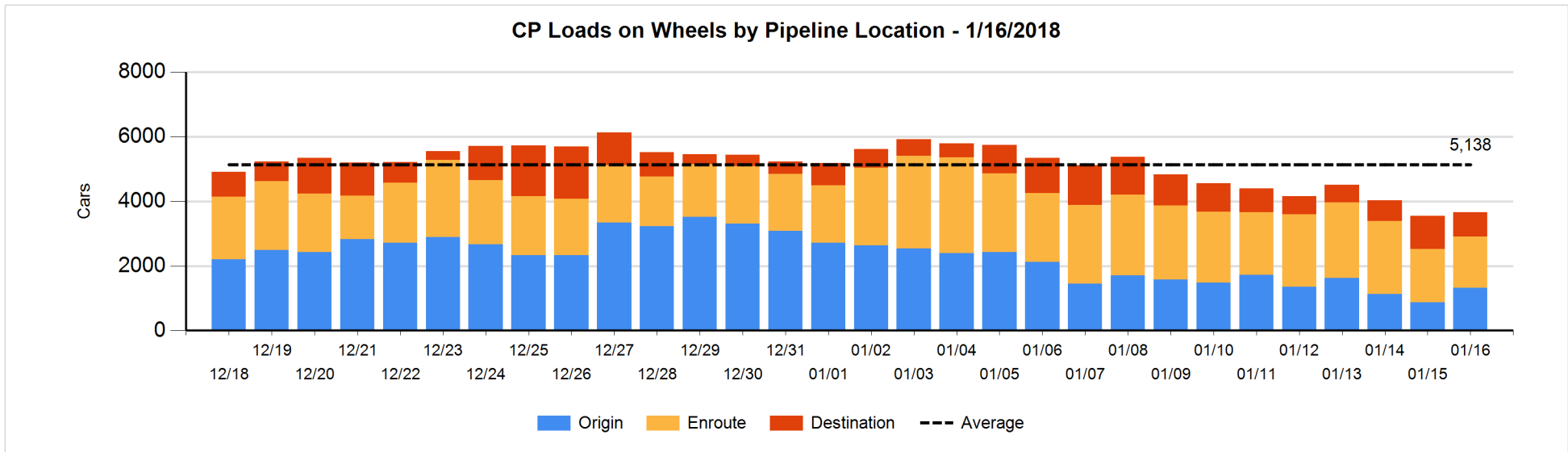
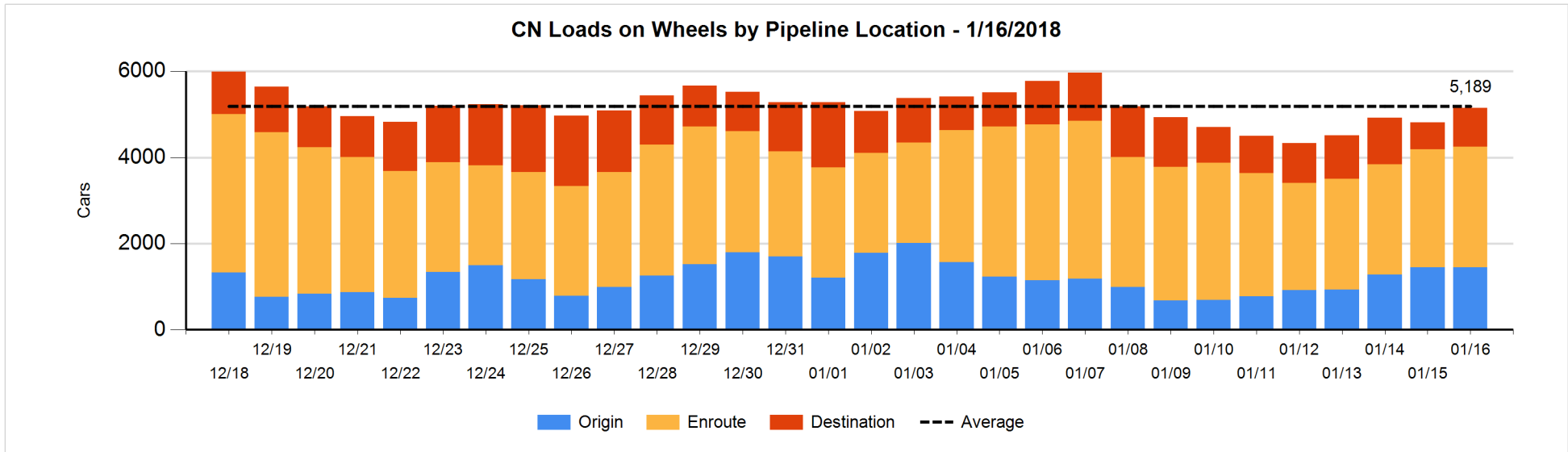


**Daily Loads on Wheels By Pipeline Location - 1/16/2018**

	E Canada	Prince Rupert	Thunder Bay	USA/MEX	Vancouver	Total
CN						
Origin	128	434		44	839	1,445
Enroute	378	932	121	309	1,061	2,801
Destination	84	196	10	4	608	902
	590	1,562	131	357	2,508	5,148
CP						
Origin	75			128	1,120	1,323
Enroute	382		1	333	873	1,589
Destination	7		1	54	689	751
	464		2	515	2,682	3,663
US Rail / Short Line						
Origin						
Enroute	171			103		274
Destination	3			120	10	133
	174			223	10	407

**Change in Daily Loads on Wheels By Pipeline Location - Prior 24 Hours**

	E Canada	Prince Rupert	Thunder Bay	USA/MEX	Vancouver	Total
CN						
Origin	-22	22		33	-35	-2
Enroute	85	85	-9	-10	-94	57
Destination	14	68	2	-57	255	282
	77	175	-7	-34	126	337
CP						
Origin	2			90	357	449
Enroute	-115		0	-43	92	-66
Destination	0		0	10	-271	-261
	-113		0	57	178	122
US Rail / Short Line						
Origin						
Enroute	23			4		27
Destination	-28			28	-4	-4
	-5			32	-4	23

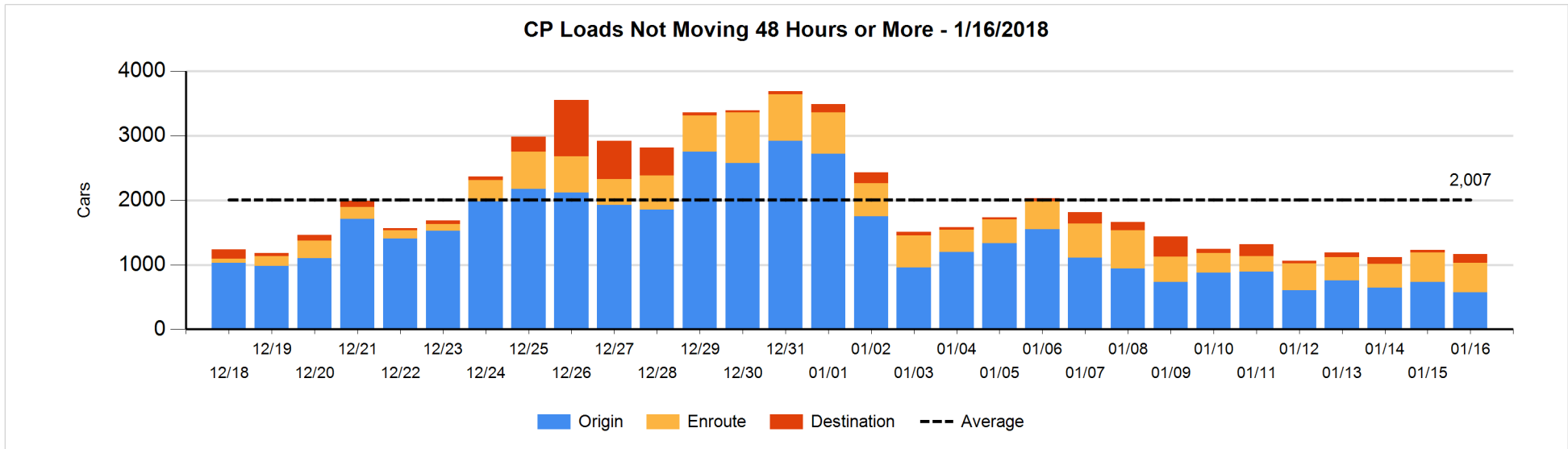
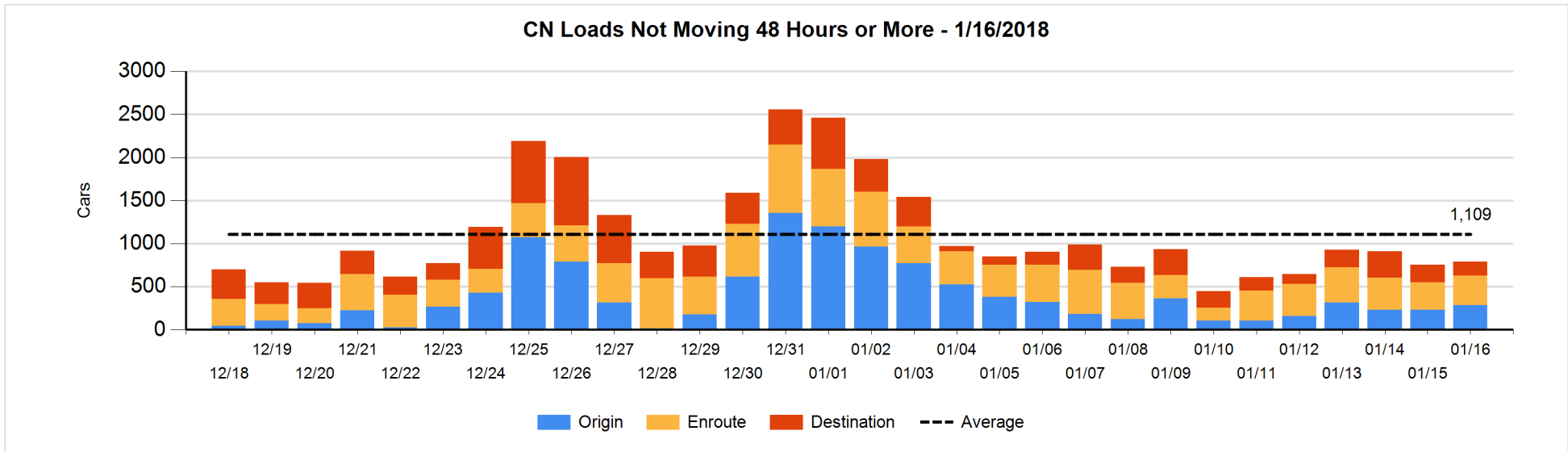


**Loads Not Moving 48 Hours or More - 1/16/2018**

	E Canada	Prince Rupert	Thunder Bay	USA/MEX	Vancouver	Total
<b>CN</b>						
Origin	93	118			73	284
Enroute	60	33	20	182	46	341
Destination	42	9	1	3	108	163
	195	160	21	185	227	788
<b>CP</b>						
Origin	72			31	468	571
Enroute	139		1	207	112	459
Destination	2		1		135	138
	213		2	238	715	1168
<b>US Rail / Short Line</b>						
Origin						
Enroute				15		15
Destination	3			72	2	77
	3			87	2	92

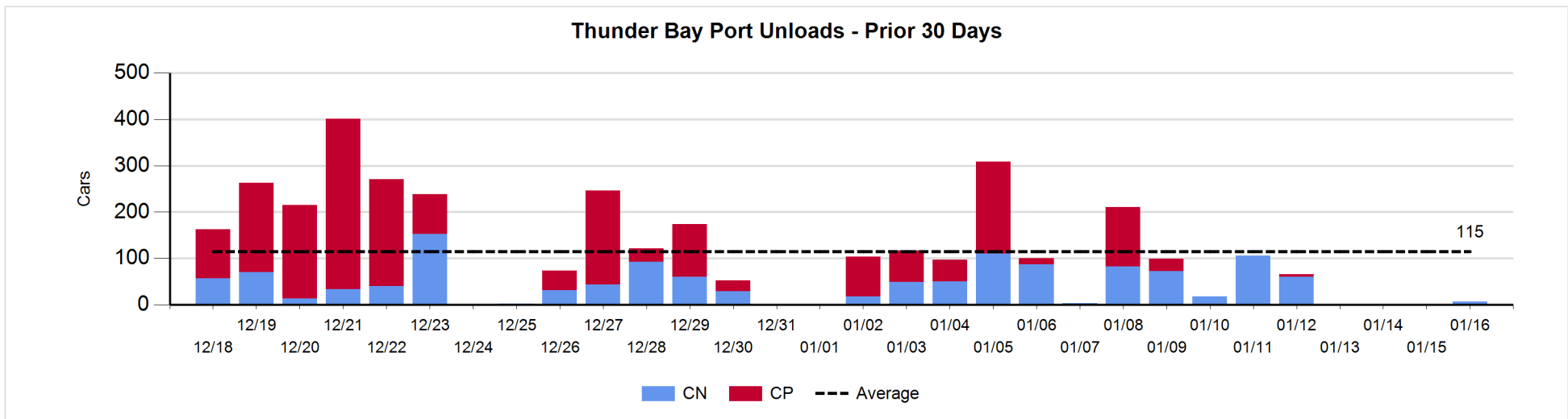
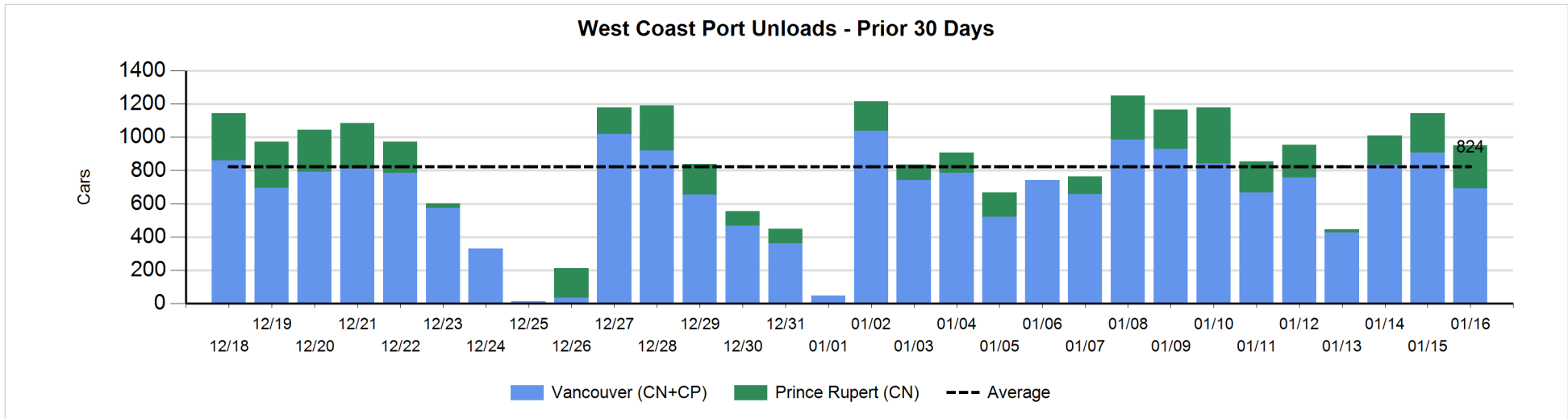
**Change in Loads Not Moving 48 Hours or More - 1/16/2018**

	E Canada	Prince Rupert	Thunder Bay	USA/MEX	Vancouver	Total
<b>CN</b>						
Origin	0	101			-50	51
Enroute	8	-5	-1	7	15	24
Destination	24	7	-5	-2	-67	-43
	32	103	-6	5	-102	32
<b>CP</b>						
Origin	0			-1	-161	-162
Enroute	18		0	-27	14	5
Destination	0		1	-2	98	97
	18		1	-30	-49	-60
<b>US Rail / Short Line</b>						
Origin						
Enroute	-1			-2		-3
Destination	-4			-3	-2	-9
	-5			-5	-2	-12



**Port Unloads - 1/16/2018**

	Prince Rupert	Vancouver	West Coast Total	Thunder Bay	Total
CN	259	237	496	7	503
CP		454	454		454
	259	691	950	7	957



**Port Terminal Status**

**Vancouver**

Daily Activity for 1/16/2018

	Cars Arrived	Cars Received in Interchange	Cars Delivered in Interchange	Cars Placed for Unloading	Loads on Wheels at Destination As of 1/16/2018
CN	523	5	220	380	608
CP	206	220	8	413	689
SRY		3		3	10

**Port Unloads**

	01/16	01/15	Week To Date	Last Week
CN	237	433	670	2,711
CP	454	473	927	2,735
SRY	4	6	10	83

**Age Profile of Loaded Cars Waiting Placement for Unloading**

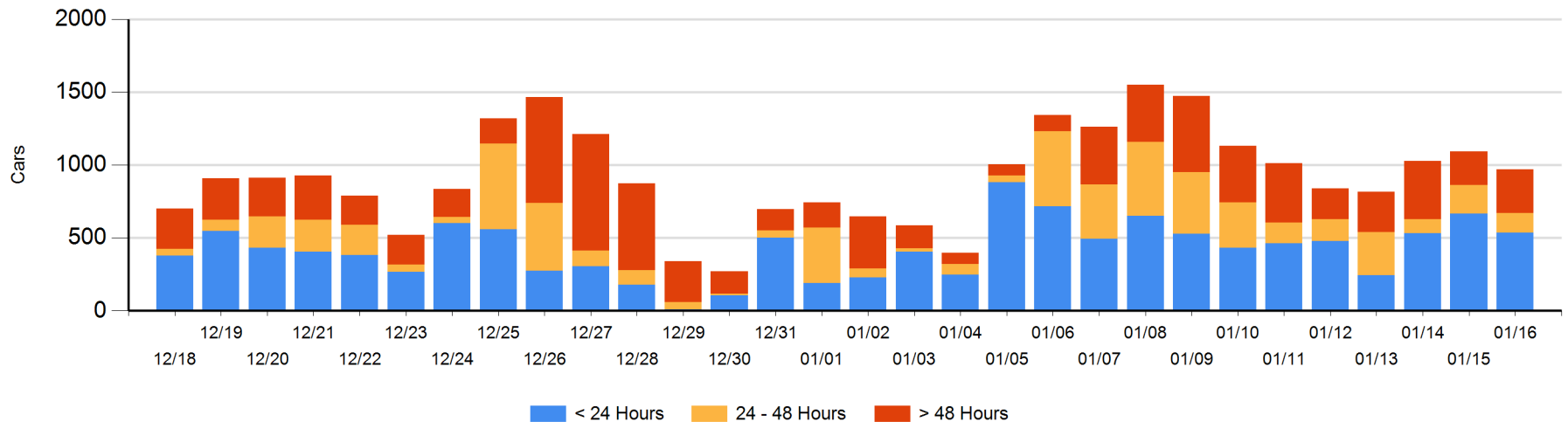
**Today**

	< 24 Hrs	24 - 48 Hrs	> 48-72 Hrs	> 72 Hrs	Total On Hand
CN	328	100		75	503
CP	206	38	167	58	469
SRY					0

**Change in Last 24 Hours**

	< 24 Hrs	24-48 Hrs	48 - 72 Hrs	> 72 Hrs
CN	90	95	-61	-32
CP	-224	-153	145	17
SRY				

**Loaded Cars on Hand Vancouver Waiting for Placement - Last 30 Days All Railways**





**Port Terminal Status**

**Prince Rupert**

Daily Activity for 1/16/2018

	Cars Arrived	Cars Received in Interchange	Cars Delivered in Interchange	Cars Placed for Unloading	Loads on Wheels at Destination As of 1/16/2018
CN	275			277	196

**Port Unloads**

	01/16	01/15	Week To Date	Last Week
CN	259	240	499	1,412

**Age Profile of Loaded Cars Waiting Placement for Unloading**

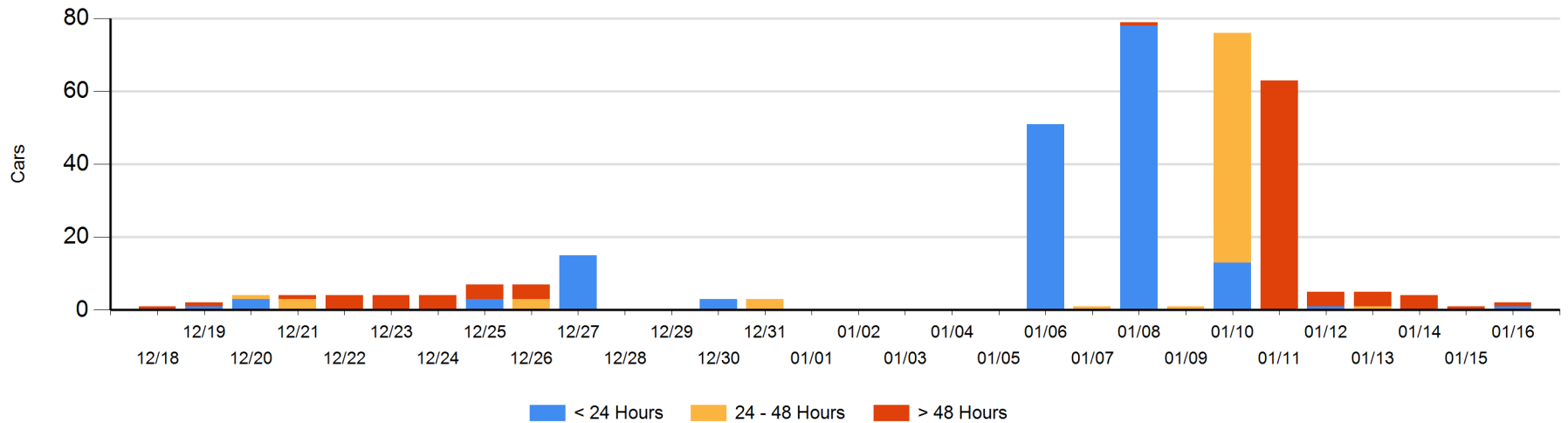
**Today**

	< 24 Hrs	24 - 48 Hrs	> 48-72 Hrs	> 72 Hrs	Total On Hand
CN	1			1	2

**Change in Last 24 Hours**

	< 24 Hrs	24-48 Hrs	48 - 72 Hrs	> 72 Hrs
CN	1			0

Loaded Cars on Hand Prince Rupert Waiting for Placement - Last 30 Days All Railways



**Port Terminal Status**

**Thunder Bay**

Daily Activity for 1/16/2018

	Cars Arrived	Cars Received in Interchange	Cars Delivered in Interchange	Cars Placed for Unloading	Loads on Wheels at Destination As of 1/16/2018
CN	9			9	10
CP					1

**Port Unloads**

	01/16	01/15	Week To Date	Last Week
CN	7	1	8	340
CP				161

**Age Profile of Loaded Cars Waiting Placement for Unloading**

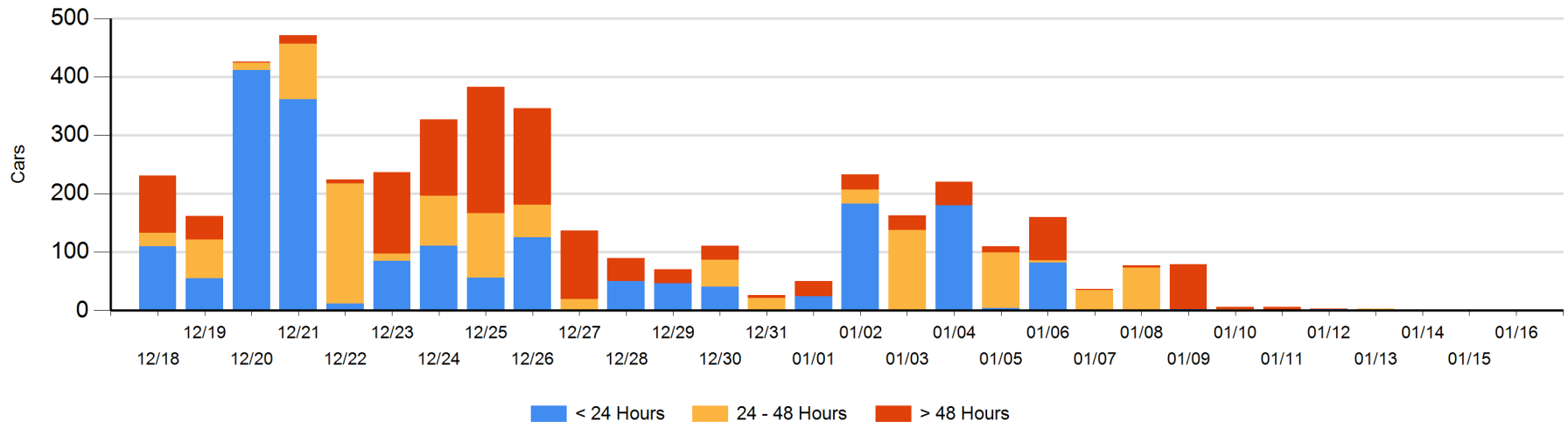
**Today**

	< 24 Hrs	24 - 48 Hrs	> 48-72 Hrs	> 72 Hrs	Total On Hand
CN					0
CP				1	1

**Change in Last 24 Hours**

	< 24 Hrs	24-48 Hrs	48 - 72 Hrs	> 72 Hrs
CN				
CP			-1	1

**Loaded Cars on Hand Thunder Bay Waiting for Placement - Last 30 Days All Railways**



## Measurement Definitions

Loads on Wheels	<p>Count of loaded rail cars including all rail cars that have been released loaded at origin and have not been reported by the railway as unloaded at destination.</p> <p>Counts include all rail cars (hopper cars and boxcars) moving within a pipeline.</p>
Loads Not Moving	<p>Loaded rail cars for which the railways have not reported a movement event for 48 hours or more whether the rail car is at origin, enroute or at destination.</p>
Port Unloads	<p>Count of rail cars reported by railways as unloaded at the western port destinations of Vancouver, Prince Rupert and Thunder Bay.</p> <p>Unload counts include all rail cars (hopper cars and boxcars) unloaded by all receivers including major port terminals, transloaders and other receivers.</p>
Cars Arrived	<p>Count of rail cars reported as arrived at the destination railway terminal.</p>
Cars Received in Interchange	<p>Count of rail cars received in interchange by each railway within a destination railway terminal. Interchange activity is tracked for the Vancouver and Thunder Bay pipelines as applicable.</p>
Cars Delivered in Interchange	<p>Count of rail cars delivered in interchange by each railway within a destination railway terminal. Interchange activity is tracked for the Vancouver and Thunder Bay pipelines as applicable.</p>
Cars Placed for Unloading	<p>Count of rail cars reported by the railways as placed loaded at the receiver's facility for unloading.</p>
Loads on Wheels at Destination	<p>Count of rail cars that remain under load within the destination railway terminal including rail cars that have been reported as placed for unloading but not yet reported as unloaded.</p>
Waiting Placement for Unloading	<p>Count of rail cars that have been reported as arrived at the destination railway terminal but not reported as placed for unloading by the railway.</p> <p>For the Ports of Vancouver, Prince Rupert and Thunder Bay the count of rail cars waiting placement for unloading is categorized by age – i.e. the elapsed time from arrival at destination to the current report date.</p>